

Data Path : Z:\svoasrv\HPCHEM1\BNA_N\Data\BN042223\
 Data File : BN025079.D
 Acq On : 22 Apr 2023 16:56
 Operator : CG/JU
 Sample : 02378-15
 Misc :
 ALS Vial : 11 Sample Multiplier: 1

Instrument :
 BNA_N
 ClientSampleId :
 COMK8

Integration Parameters: LSCINT.P

Integrator: RTE
 Smoothing : OFF Filtering: 5
 Sampling : 1 Min Area: 0.1 % of largest Peak
 Start Thrs: 0.2 Max Peaks: 100
 Stop Thrs : 0 Peak Location: TOP

If leading or trailing edge < 100 prefer < Baseline drop else tangent >
 Peak separation: 5

Method : Z:\svoasrv\HPCHEM1\BNA_N\Methods\SFAM-EPA-BN041023.M
 Title : SVOA CALIBRATION

Signal : TIC: BN025079.D\data.ms

peak #	R.T. min	first scan	max scan	last scan	PK TY	peak height	corr. area	corr. % max.	% of total
1	3.722	89	91	113	rBV	349465	688984	0.25%	0.069%
2	5.216	335	345	347	rBV3	45174985	92430453	33.72%	9.297%
3	6.587	571	578	588	rVB	171959	299581	0.11%	0.030%
4	7.105	655	666	675	rVB2	932117	2041485	0.74%	0.205%
5	7.257	685	692	703	rVB	956939	1726521	0.63%	0.174%
6	7.452	717	725	736	rBV	964228	1813845	0.66%	0.182%
7	7.822	776	788	799	rBV	18696164	44701901	16.31%	4.496%
8	8.028	799	823	827	rBV5	51051963	240952896	87.92%	24.236%
9	8.369	858	881	885	rBV4	51224225	274073394	100.00%	27.567%
10	8.634	919	926	933	rBV	855770	1349666	0.49%	0.136%
11	9.093	996	1004	1007	rBV	1400484	2329244	0.85%	0.234%
12	9.134	1007	1011	1020	rVB	2701162	4250005	1.55%	0.427%
13	9.422	1053	1060	1069	rBV	958304	1606936	0.59%	0.162%
14	9.651	1091	1099	1103	rBV	168692	286148	0.10%	0.029%
15	9.740	1109	1114	1120	rVB	427851	760876	0.28%	0.077%
16	9.816	1120	1127	1135	rBV	1097203	1959915	0.72%	0.197%
17	10.351	1208	1218	1227	rBV	1323045	2430112	0.89%	0.244%
18	10.646	1252	1268	1273	rBV4	47515069	170823939	62.33%	17.182%
19	10.751	1279	1286	1291	rBV	1721395	2490114	0.91%	0.250%
20	10.875	1298	1307	1318	rBV	1483184	2492234	0.91%	0.251%
21	11.134	1340	1351	1358	rBV	25383485	47980671	17.51%	4.826%
22	11.340	1379	1386	1392	rVB	1779535	2912869	1.06%	0.293%
23	11.551	1413	1422	1432	rVB	467715	817735	0.30%	0.082%
24	12.028	1490	1503	1515	rBV4	172345	397633	0.15%	0.040%
25	12.757	1622	1627	1635	rVB	5229917	8187359	2.99%	0.824%
26	13.369	1723	1731	1741	rBV	14738213	22974926	8.38%	2.311%
27	13.575	1761	1766	1777	rVB	549847	822728	0.30%	0.083%
28	13.975	1825	1834	1839	rBV	2852697	3905186	1.42%	0.393%
29	14.257	1871	1882	1890	rBV	3001213	4276912	1.56%	0.430%
30	14.563	1925	1934	1947	rVB	2243974	3281573	1.20%	0.330%
31	14.757	1962	1967	1977	rBV	278437	467898	0.17%	0.047%
32	14.881	1984	1988	1999	rVB	465368	658249	0.24%	0.066%
33	15.557	2096	2103	2109	rBV	3905392	5519740	2.01%	0.555%
34	15.675	2117	2123	2131	rBV	1552716	2022377	0.74%	0.203%
35	15.922	2156	2165	2177	rBV	1704914	2264686	0.83%	0.228%
36	17.310	2395	2401	2412	rBV	2711501	3856404	1.41%	0.388%

Data Path : Z:\svoasrv\HPCHEM1\BNA_N\Data\BN042223\
 Data File : BN025079.D
 Acq On : 22 Apr 2023 16:56
 Operator : CG/JU
 Sample : 02378-15
 Misc :
 ALS Vial : 11 Sample Multiplier: 1

Instrument :
 BNA_N
 ClientSampleId :
 COMK8

Integration Parameters: LSCINT.P

Integrator: RTE
 Smoothing : OFF Filtering: 5
 Sampling : 1 Min Area: 0.1 % of largest Peak
 Start Thrs: 0.2 Max Peaks: 100
 Stop Thrs : 0 Peak Location: TOP

If leading or trailing edge < 100 prefer < Baseline drop else tangent >
 Peak separation: 5

Method : Z:\svoasrv\HPCHEM1\BNA_N\Methods\SFAM-EPA-BN041023.M
 Title : SVOA CALIBRATION

37	17.410	2412	2418	2426	rBV2	4354138	6105291	2.23%	0.614%
38	18.198	2547	2552	2562	rBV	465413	723270	0.26%	0.073%
39	19.474	2765	2769	2780	rBV	189664	301697	0.11%	0.030%
40	19.704	2802	2808	2814	rBV	5475911	7479402	2.73%	0.752%
41	21.204	3059	3063	3075	rBV	530500	1013538	0.37%	0.102%
42	21.504	3109	3114	3120	rBV	3617080	4433309	1.62%	0.446%
43	23.792	3495	3503	3517	rVB2	4220456	9148448	3.34%	0.920%
44	23.951	3523	3530	3538	rVB	2718565	5153577	1.88%	0.518%

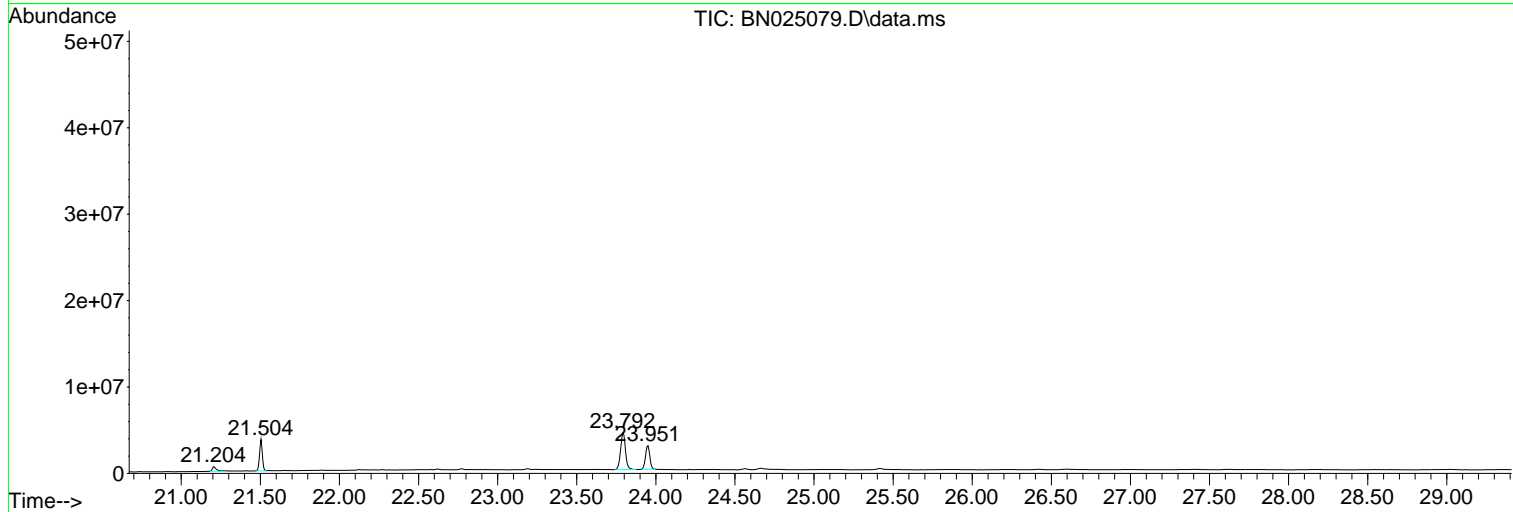
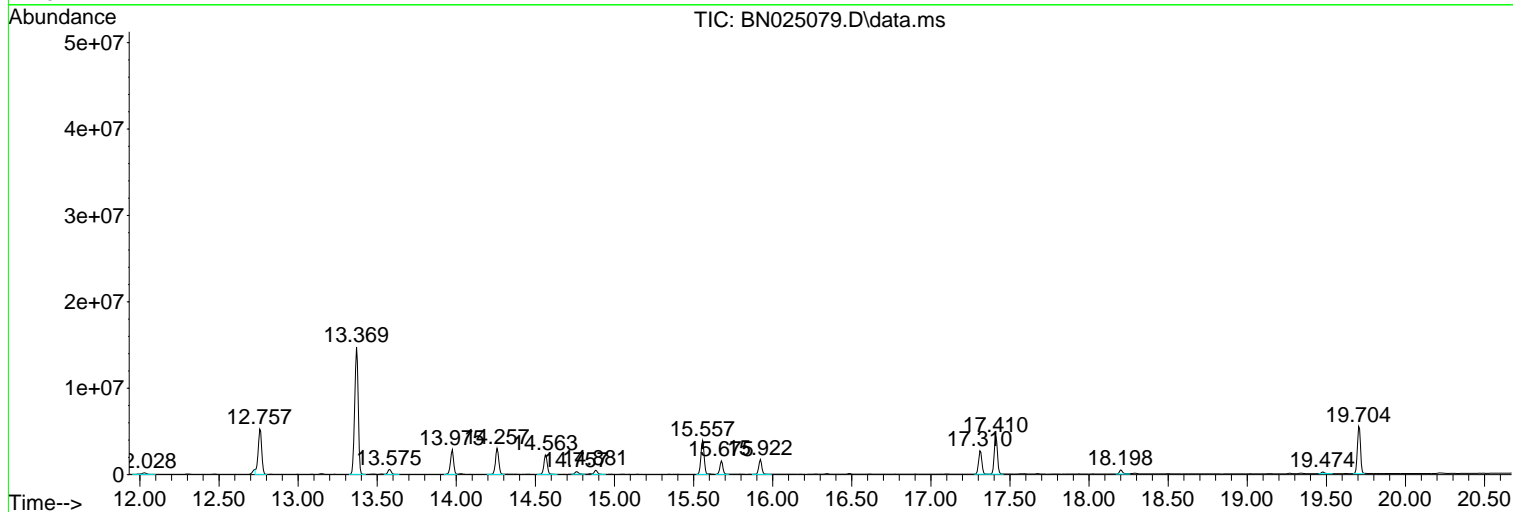
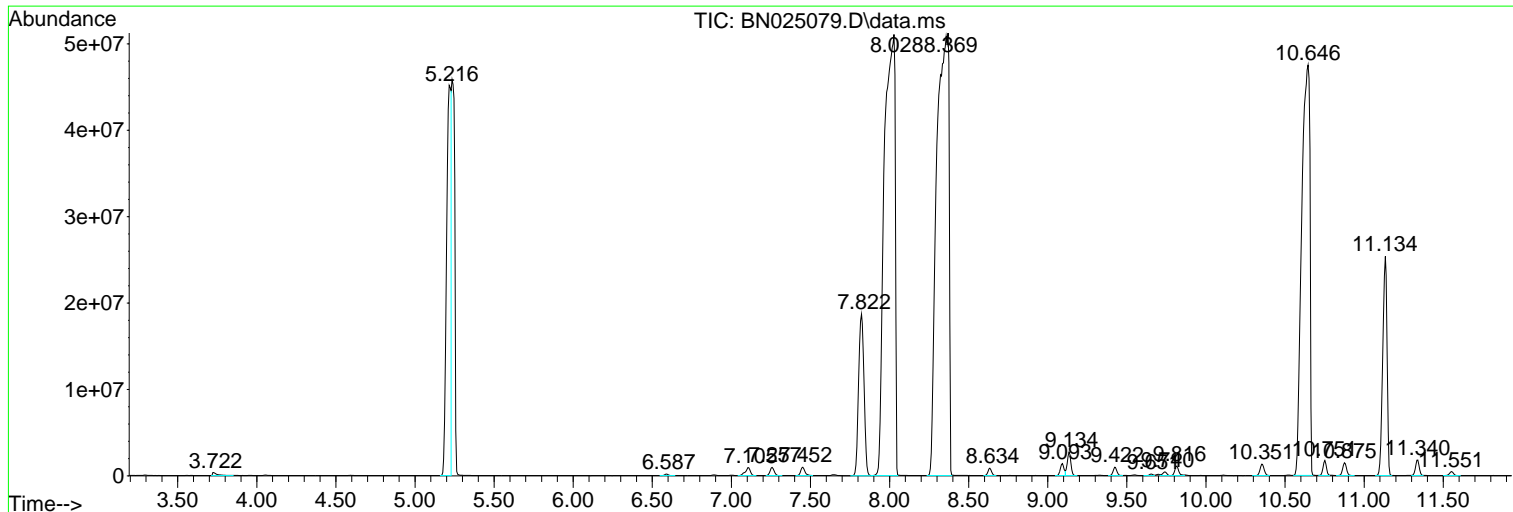
Sum of corrected areas: 994213727

Data Path : Z:\svoasrv\HPCHEM1\BNA_N\Data\BN042223\
 Data File : BN025079.D
 Acq On : 22 Apr 2023 16:56
 Operator : CG/JU
 Sample : 02378-15
 Misc :
 ALS Vial : 11 Sample Multiplier: 1

Instrument :
 BNA_N
 ClientSampleId :
 COMK8

Quant Method : Z:\svoasrv\HPCHEM1\BNA_N\Methods\SFAM-EPA-BN041023.M
 Quant Title : SVOA CALIBRATION

TIC Library : C:\Database\NIST20.L
 TIC Integration Parameters: LSCINT.P



Data Path : Z:\svoasrv\HPCHEM1\BNA_N\Data\BN042223\
 Data File : BN025079.D
 Acq On : 22 Apr 2023 16:56
 Operator : CG/JU
 Sample : 02378-15
 Misc :
 ALS Vial : 11 Sample Multiplier: 1

Instrument :
 BNA_N
 ClientSampleId :
 COMK8

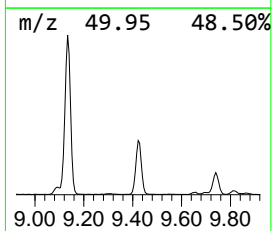
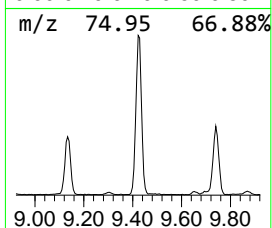
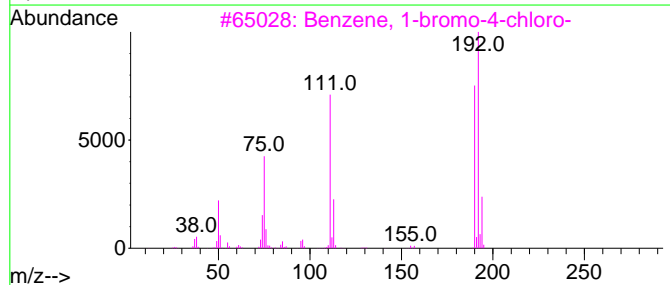
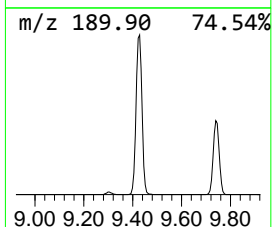
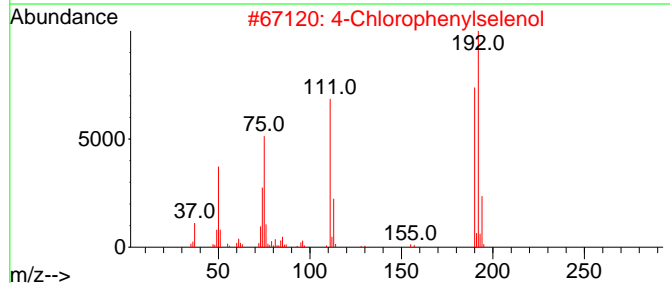
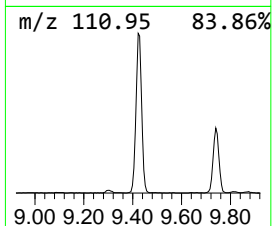
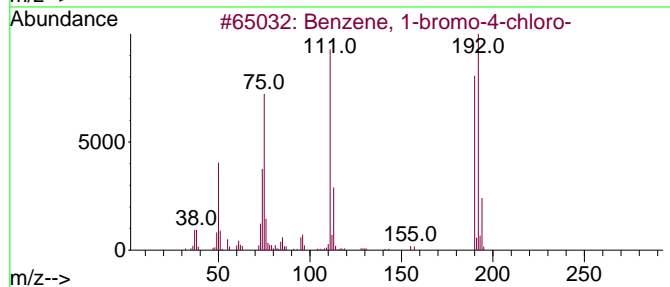
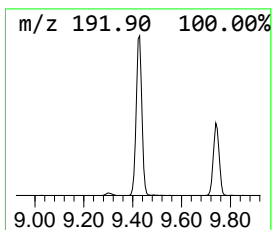
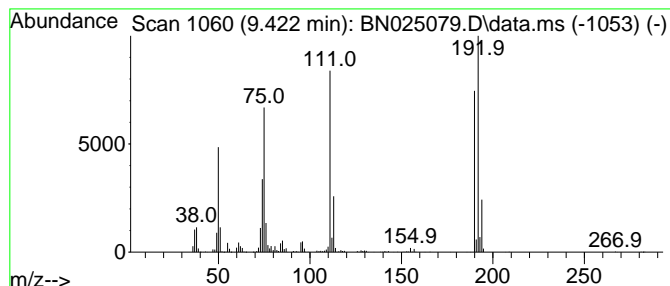
Quant Method : Z:\svoasrv\HPCHEM1\BNA_N\Methods\SFAM-EPA-BN041023.M
 Quant Title : SVOA CALIBRATION

TIC Library : C:\Database\NIST20.L
 TIC Integration Parameters: LSCINT.P

 Peak Number 5 Benzene, 1-bromo-4-chloro- Concentration Rank 8

R.T.	EstConc	Area	Relative to ISTD	R.T.
9.422	12.91 ng/ul	1606940	Naphthalene-d8	10.751

Hit#	of	5	Tentative ID	MW	MolForm	CAS#	Qual
1			Benzene, 1-bromo-4-chloro-	190	C6H4BrCl	000106-39-8	99
2			4-Chlorophenylselenol	192	C6H5ClSe	016645-10-6	99
3			Benzene, 1-bromo-4-chloro-	190	C6H4BrCl	000106-39-8	98
4			Benzene, 1-bromo-4-chloro-	190	C6H4BrCl	000106-39-8	96
5			Benzene, 1-bromo-4-chloro-	190	C6H4BrCl	000106-39-8	96



Data Path : Z:\svoasrv\HPCHEM1\BNA_N\Data\BN042223\
 Data File : BN025079.D
 Acq On : 22 Apr 2023 16:56
 Operator : CG/JU
 Sample : 02378-15
 Misc :
 ALS Vial : 11 Sample Multiplier: 1

Instrument :
 BNA_N
 ClientSampleId :
 COMK8

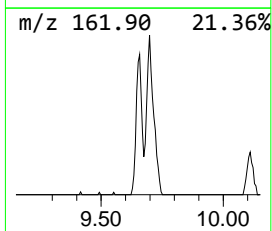
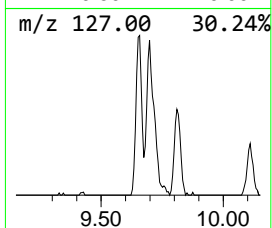
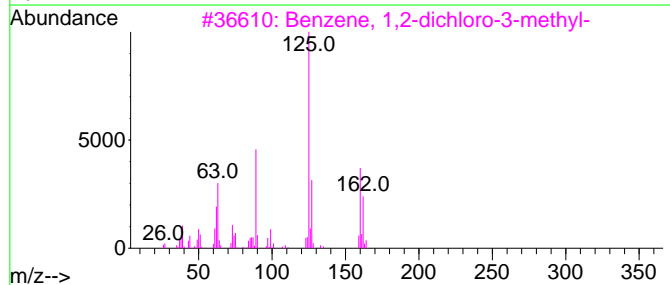
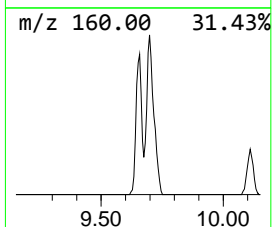
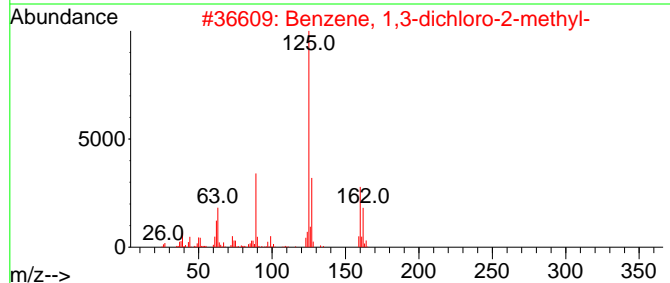
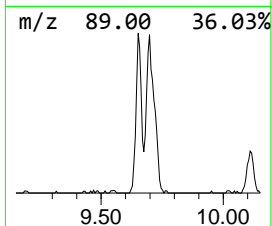
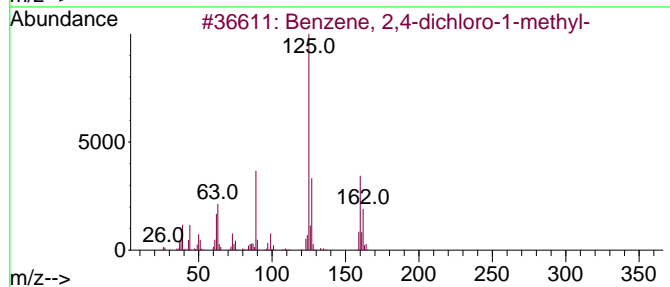
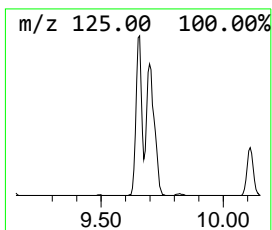
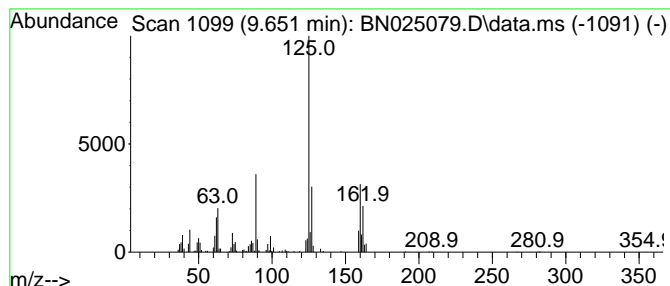
Quant Method : Z:\svoasrv\HPCHEM1\BNA_N\Methods\SFAM-EPA-BN041023.M
 Quant Title : SVOA CALIBRATION

TIC Library : C:\Database\NIST20.L
 TIC Integration Parameters: LSCINT.P

 Peak Number 6 Benzene, 2,4-dichloro-1-met... Concentration Rank 18

R.T.	EstConc	Area	Relative to ISTD	R.T.
9.651	2.30 ng/ul	286148	Naphthalene-d8	10.751

Hit#	of	5	Tentative ID	MW	MolForm	CAS#	Qual
1			Benzene, 2,4-dichloro-1-methyl-	160	C7H6Cl2	000095-73-8	98
2			Benzene, 1,3-dichloro-2-methyl-	160	C7H6Cl2	000118-69-4	97
3			Benzene, 1,2-dichloro-3-methyl-	160	C7H6Cl2	032768-54-0	97
4			Benzene, 1,2-dichloro-4-methyl-	160	C7H6Cl2	000095-75-0	97
5			Benzene, 1,2-dichloro-3-methyl-	160	C7H6Cl2	032768-54-0	96



Data Path : Z:\svoasrv\HPCHEM1\BNA_N\Data\BN042223\
 Data File : BN025079.D
 Acq On : 22 Apr 2023 16:56
 Operator : CG/JU
 Sample : 02378-15
 Misc :
 ALS Vial : 11 Sample Multiplier: 1

Instrument :
 BNA_N
 ClientSampleId :
 COMK8

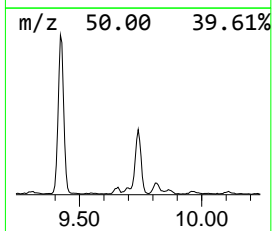
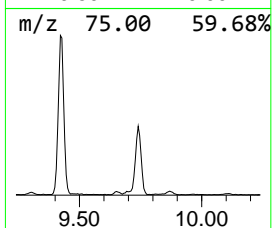
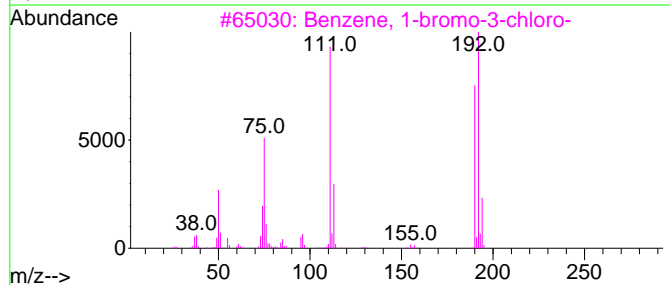
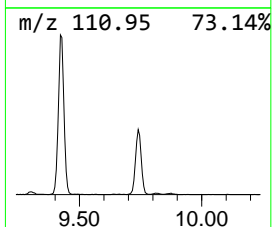
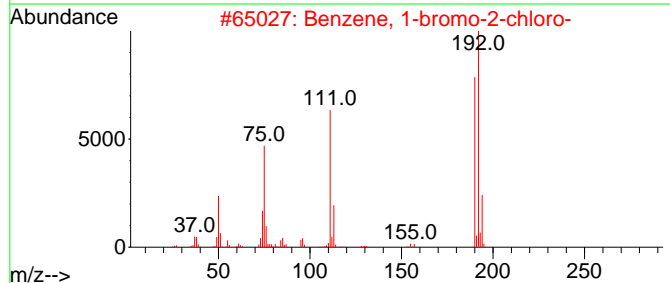
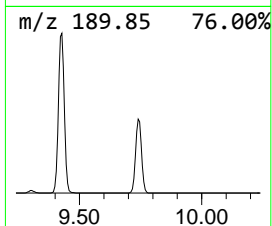
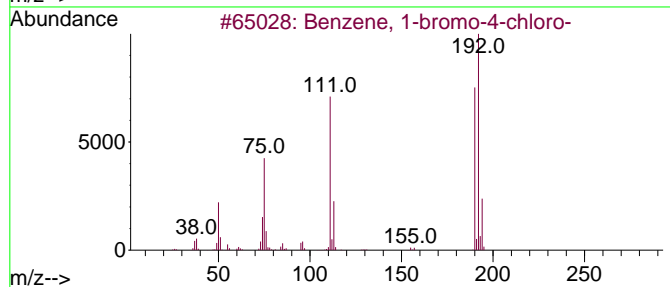
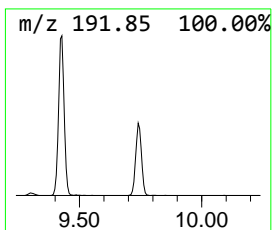
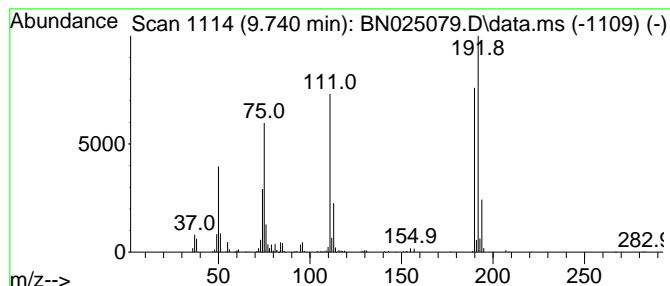
Quant Method : Z:\svoasrv\HPCHEM1\BNA_N\Methods\SFAM-EPA-BN041023.M
 Quant Title : SVOA CALIBRATION

TIC Library : C:\Database\NIST20.L
 TIC Integration Parameters: LSCINT.P

 Peak Number 7 Benzene, 1-bromo-2-chloro- Concentration Rank 11

R.T.	EstConc	Area	Relative to ISTD	R.T.
9.740	6.11 ng/ul	760876	Naphthalene-d8	10.751

Hit#	of	5	Tentative ID	MW	MolForm	CAS#	Qual
1			Benzene, 1-bromo-4-chloro-	190	C6H4BrCl	000106-39-8	98
2			Benzene, 1-bromo-2-chloro-	190	C6H4BrCl	000694-80-4	98
3			Benzene, 1-bromo-3-chloro-	190	C6H4BrCl	000108-37-2	97
4			Benzene, 1-bromo-4-chloro-	190	C6H4BrCl	000106-39-8	96
5			Benzene, 1-bromo-4-chloro-	190	C6H4BrCl	000106-39-8	95



Data Path : Z:\svoasrv\HPCHEM1\BNA_N\Data\BN042223\
 Data File : BN025079.D
 Acq On : 22 Apr 2023 16:56
 Operator : CG/JU
 Sample : 02378-15
 Misc :
 ALS Vial : 11 Sample Multiplier: 1

Instrument :
 BNA_N
 ClientSampleId :
 COMK8

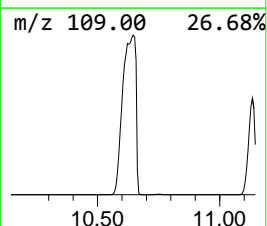
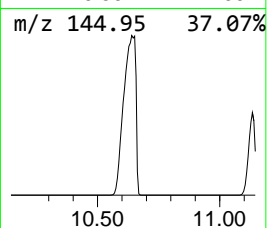
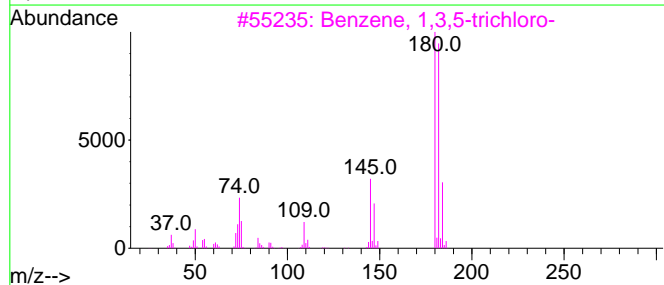
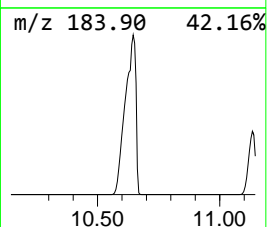
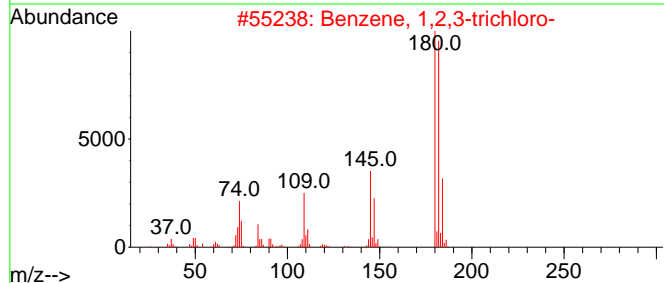
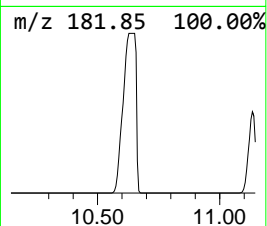
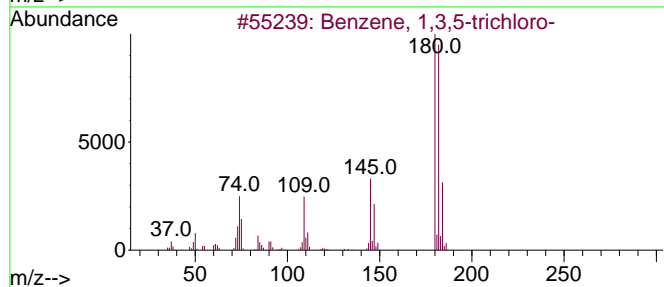
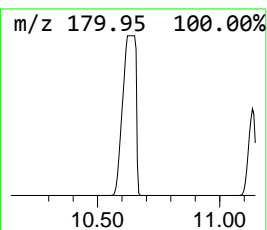
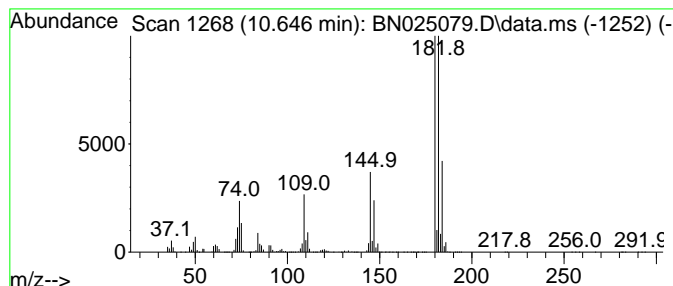
Quant Method : Z:\svoasrv\HPCHEM1\BNA_N\Methods\SFAM-EPA-BN041023.M
 Quant Title : SVOA CALIBRATION

TIC Library : C:\Database\NIST20.L
 TIC Integration Parameters: LSCINT.P

 Peak Number 8 Benzene, 1,3,5-trichloro- Concentration Rank 1

R.T.	EstConc	Area	Relative to ISTD	R.T.
10.646	1372.02 ng/ul	170824000	Naphthalene-d8	10.751

Hit#	of	5	Tentative ID	MW	MolForm	CAS#	Qual
1			Benzene, 1,3,5-trichloro-	180	C6H3Cl3	000108-70-3	98
2			Benzene, 1,2,3-trichloro-	180	C6H3Cl3	000087-61-6	98
3			Benzene, 1,3,5-trichloro-	180	C6H3Cl3	000108-70-3	97
4			Benzene, 1,2,3-trichloro-	180	C6H3Cl3	000087-61-6	96
5			Benzene, 1,2,3-trichloro-	180	C6H3Cl3	000087-61-6	96



Data Path : Z:\svoasrv\HPCHEM1\BNA_N\Data\BN042223\
 Data File : BN025079.D
 Acq On : 22 Apr 2023 16:56
 Operator : CG/JU
 Sample : 02378-15
 Misc :
 ALS Vial : 11 Sample Multiplier: 1

Instrument :
 BNA_N
 ClientSampleId :
 COMK8

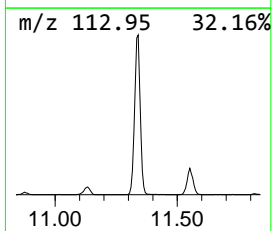
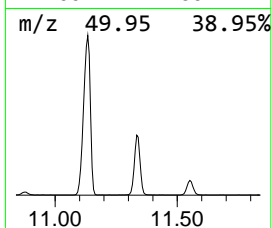
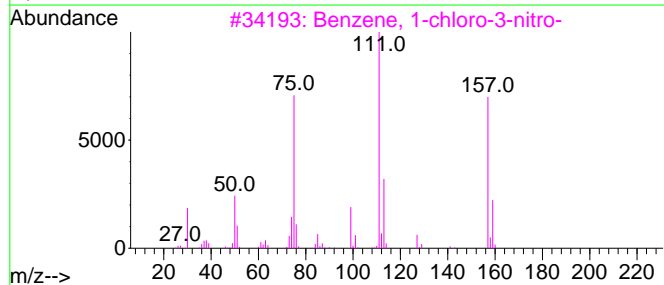
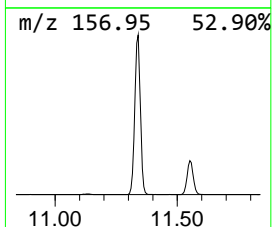
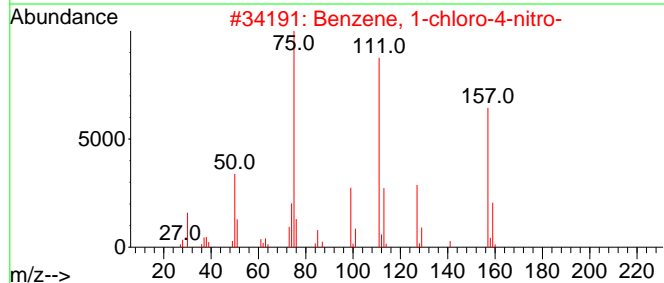
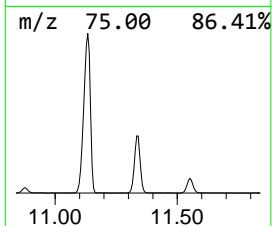
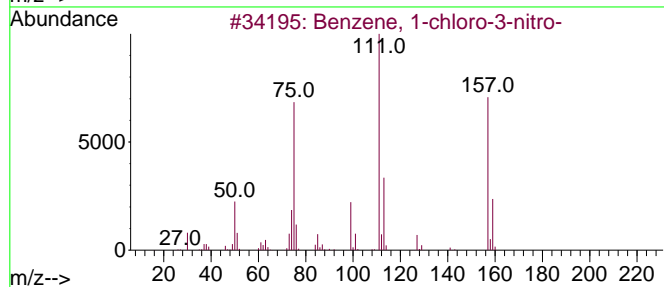
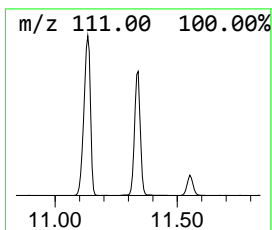
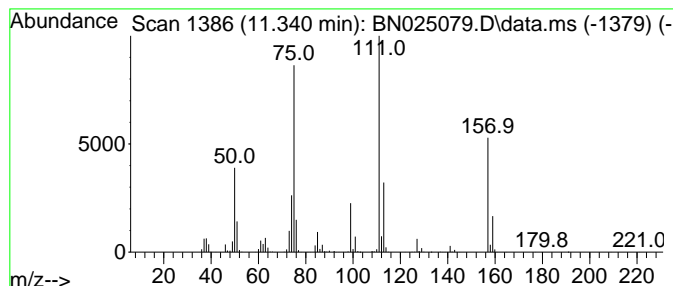
Quant Method : Z:\svoasrv\HPCHEM1\BNA_N\Methods\SFAM-EPA-BN041023.M
 Quant Title : SVOA CALIBRATION

TIC Library : C:\Database\NIST20.L
 TIC Integration Parameters: LSCINT.P

 Peak Number 10 Benzene, 1-chloro-3-nitro- Concentration Rank 4

R.T.	EstConc	Area	Relative to ISTD	R.T.
11.340	23.40 ng/ul	2912870	Naphthalene-d8	10.751

Hit#	of 5	Tentative ID	MW	MolForm	CAS#	Qual
1		Benzene, 1-chloro-3-nitro-	157	C6H4ClNO2	000121-73-3	96
2		Benzene, 1-chloro-4-nitro-	157	C6H4ClNO2	000100-00-5	94
3		Benzene, 1-chloro-3-nitro-	157	C6H4ClNO2	000121-73-3	91
4		Benzene, 1-chloro-4-nitro-	157	C6H4ClNO2	000100-00-5	87
5		Benzene, 1-chloro-4-nitro-	157	C6H4ClNO2	000100-00-5	86



Data Path : Z:\svoasrv\HPCHEM1\BNA_N\Data\BN042223\
 Data File : BN025079.D
 Acq On : 22 Apr 2023 16:56
 Operator : CG/JU
 Sample : 02378-15
 Misc :
 ALS Vial : 11 Sample Multiplier: 1

Instrument :
 BNA_N
 ClientSampleId :
 COMK8

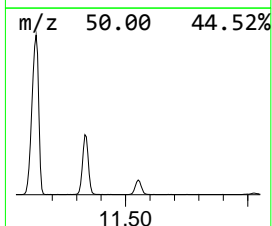
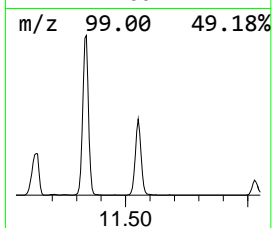
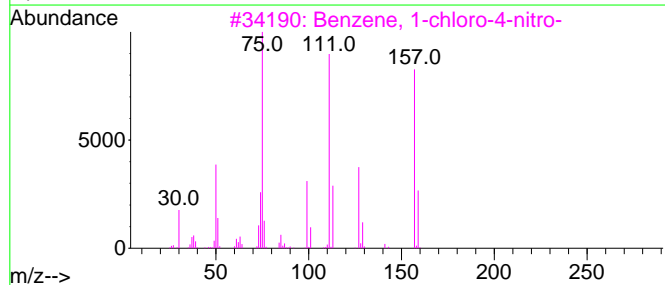
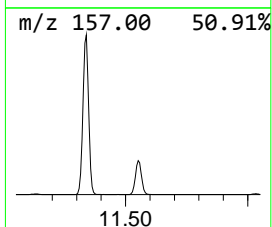
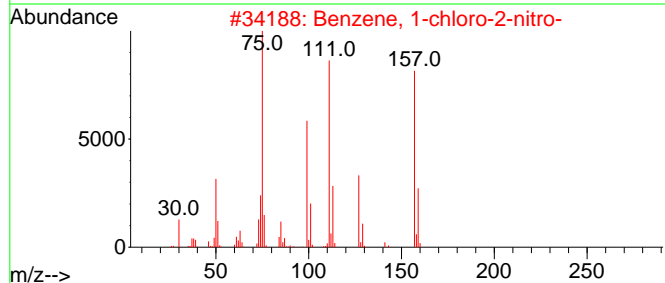
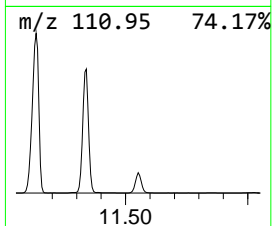
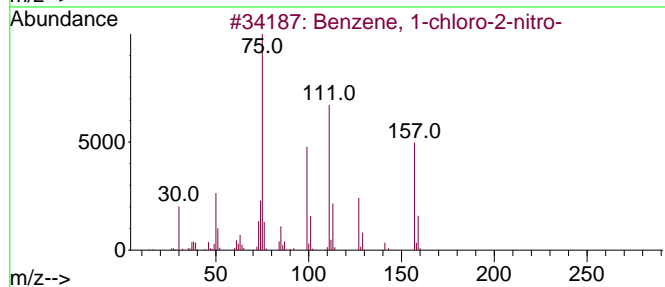
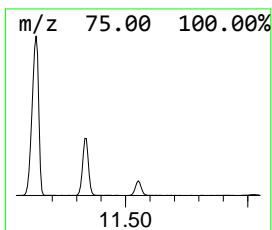
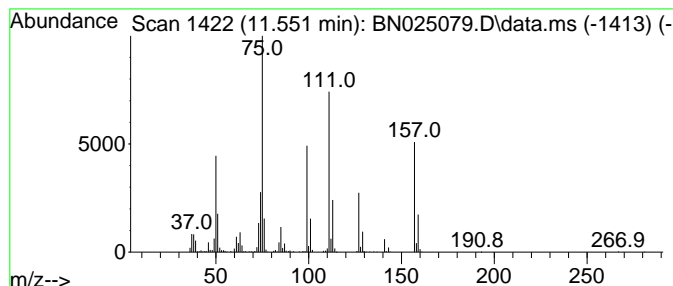
Quant Method : Z:\svoasrv\HPCHEM1\BNA_N\Methods\SFAM-EPA-BN041023.M
 Quant Title : SVOA CALIBRATION

TIC Library : C:\Database\NIST20.L
 TIC Integration Parameters: LSCINT.P

 Peak Number 11 Benzene, 1-chloro-2-nitro- Concentration Rank 10

R.T.	EstConc	Area	Relative to ISTD	R.T.
11.551	6.57 ng/ul	817735	Naphthalene-d8	10.751

Hit#	of	5	Tentative ID	MW	MolForm	CAS#	Qual
1			Benzene, 1-chloro-2-nitro-	157	C6H4ClNO2	000088-73-3	98
2			Benzene, 1-chloro-2-nitro-	157	C6H4ClNO2	000088-73-3	97
3			Benzene, 1-chloro-4-nitro-	157	C6H4ClNO2	000100-00-5	97
4			Benzene, 1-chloro-4-nitro-	157	C6H4ClNO2	000100-00-5	94
5			Benzene, 1-chloro-3-nitro-	157	C6H4ClNO2	000121-73-3	93



Data Path : Z:\svoasrv\HPCHEM1\BNA_N\Data\BN042223\
 Data File : BN025079.D
 Acq On : 22 Apr 2023 16:56
 Operator : CG/JU
 Sample : 02378-15
 Misc :
 ALS Vial : 11 Sample Multiplier: 1

Instrument :
 BNA_N
 ClientSampleId :
 COMK8

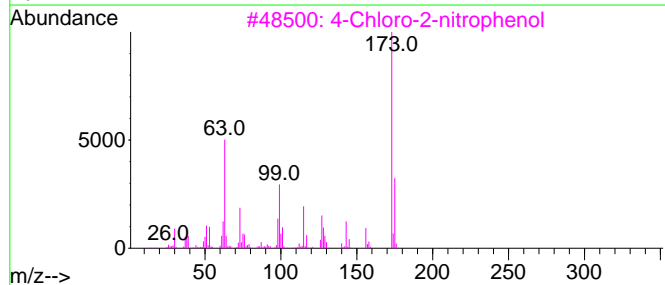
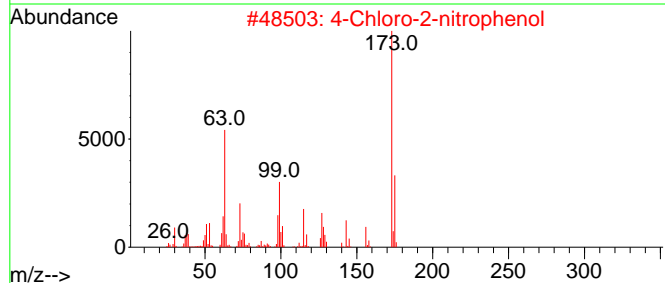
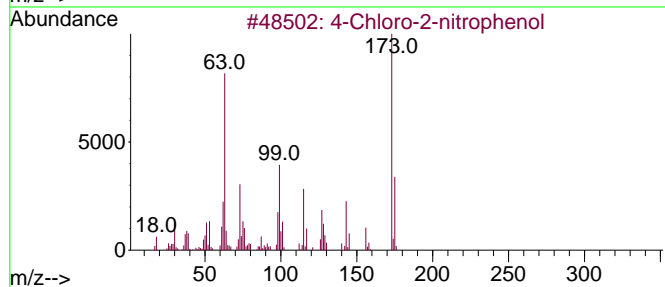
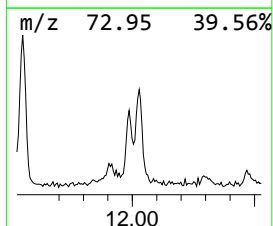
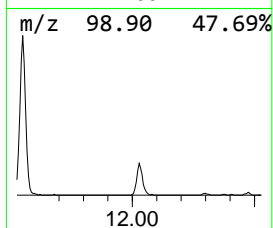
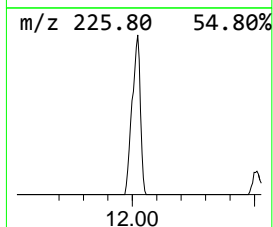
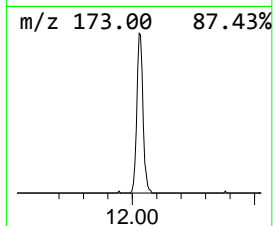
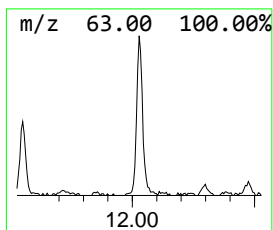
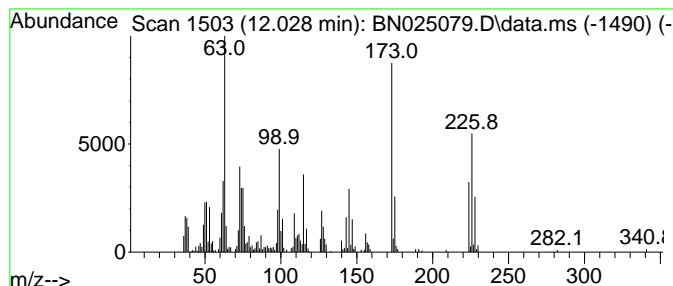
Quant Method : Z:\svoasrv\HPCHEM1\BNA_N\Methods\SFAM-EPA-BN041023.M
 Quant Title : SVOA CALIBRATION

TIC Library : C:\Database\NIST20.L
 TIC Integration Parameters: LSCINT.P

 Peak Number 12 4-Chloro-2-nitrophenol Concentration Rank 17

R.T.	EstConc	Area	Relative to ISTD	R.T.
12.028	3.19 ng/ul	397633	Naphthalene-d8	10.751

Hit#	of 5	Tentative ID	MW	MolForm	CAS#	Qual
1		4-Chloro-2-nitrophenol	173	C6H4ClNO3	000089-64-5	97
2		4-Chloro-2-nitrophenol	173	C6H4ClNO3	000089-64-5	95
3		4-Chloro-2-nitrophenol	173	C6H4ClNO3	000089-64-5	95
4		Benzene, 1-bromo-3,5-dichloro-	224	C6H3BrCl2	019752-55-7	91
5		2-Chloro-6-nitrophenol	173	C6H4ClNO3	000603-86-1	90



Data Path : Z:\svoasrv\HPCHEM1\BNA_N\Data\BN042223\
 Data File : BN025079.D
 Acq On : 22 Apr 2023 16:56
 Operator : CG/JU
 Sample : 02378-15
 Misc :
 ALS Vial : 11 Sample Multiplier: 1

Instrument :
 BNA_N
 ClientSampleId :
 COMK8

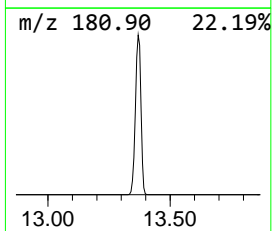
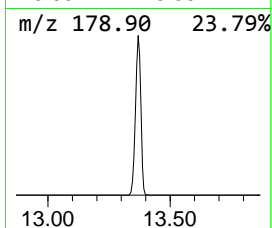
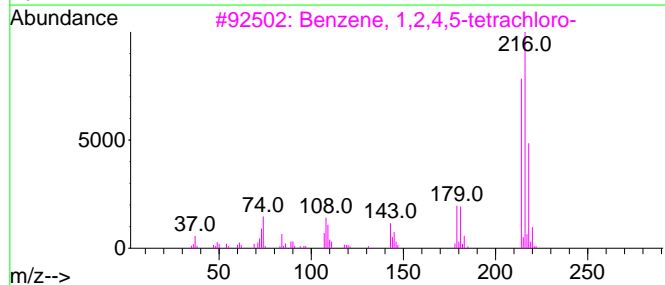
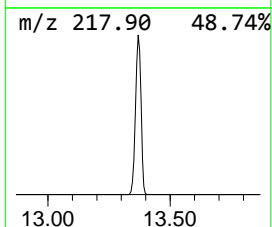
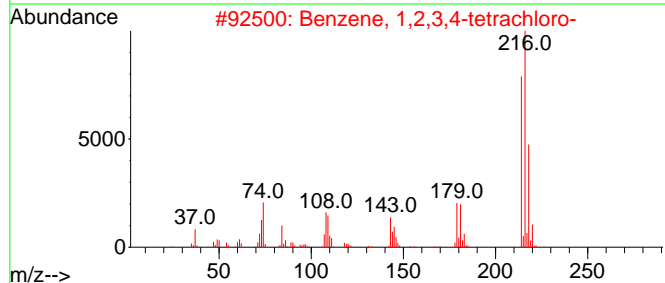
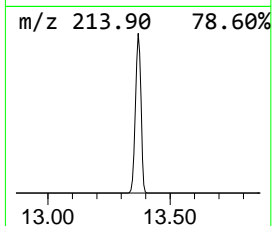
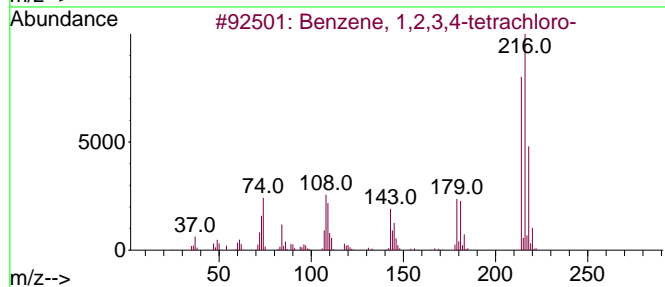
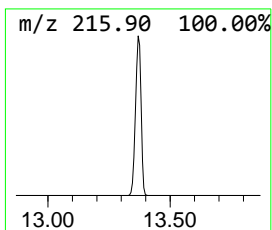
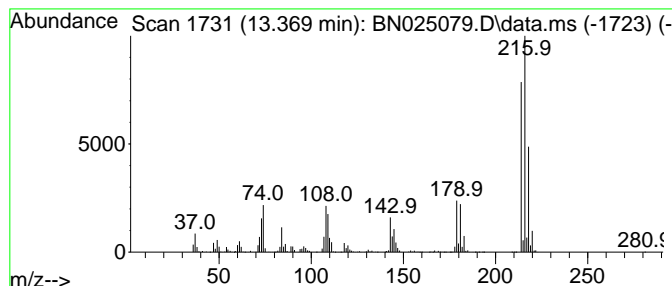
Quant Method : Z:\svoasrv\HPCHEM1\BNA_N\Methods\SFAM-EPA-BN041023.M
 Quant Title : SVOA CALIBRATION

TIC Library : C:\Database\NIST20.L
 TIC Integration Parameters: LSCINT.P

 Peak Number 13 Benzene, 1,2,3,4-tetrachloro- Concentration Rank 3

R.T.	EstConc	Area	Relative to ISTD	R.T.
13.369	140.02 ng/ul	22974900	Acenaphthene-d10	14.563

Hit#	of	5	Tentative ID	MW	MolForm	CAS#	Qual
1			Benzene, 1,2,3,4-tetrachloro-	214	C6H2Cl4	000634-66-2	99
2			Benzene, 1,2,3,4-tetrachloro-	214	C6H2Cl4	000634-66-2	99
3			Benzene, 1,2,4,5-tetrachloro-	214	C6H2Cl4	000095-94-3	99
4			Benzene, 1,2,4,5-tetrachloro-	214	C6H2Cl4	000095-94-3	99
5			Benzene, 1,2,3,5-tetrachloro-	214	C6H2Cl4	000634-90-2	99



Data Path : Z:\svoasrv\HPCHEM1\BNA_N\Data\BN042223\
 Data File : BN025079.D
 Acq On : 22 Apr 2023 16:56
 Operator : CG/JU
 Sample : 02378-15
 Misc :
 ALS Vial : 11 Sample Multiplier: 1

Instrument :
 BNA_N
 ClientSampleId :
 COMK8

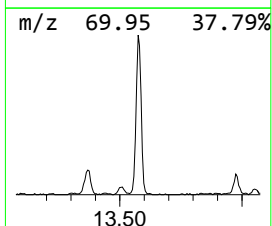
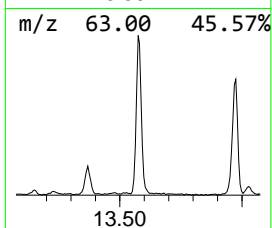
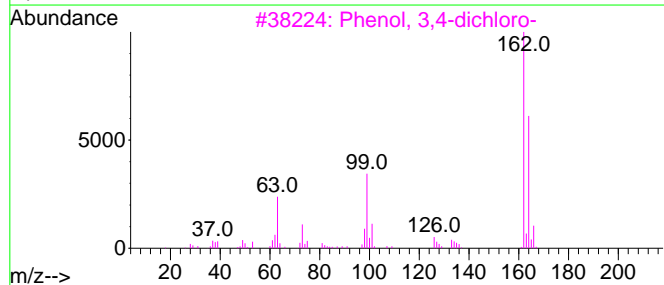
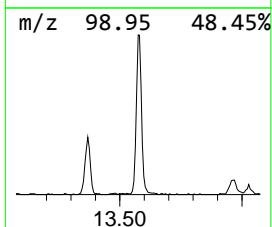
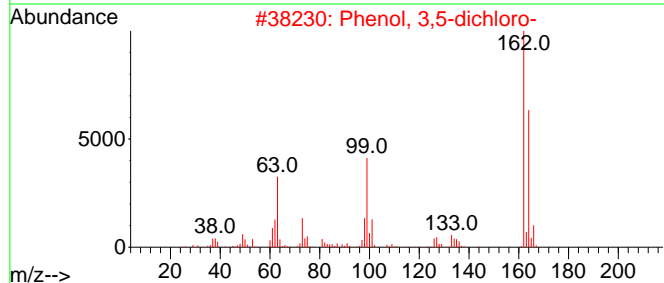
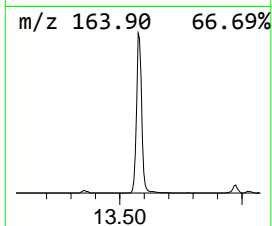
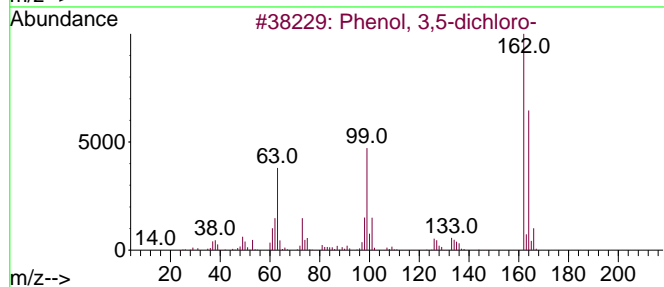
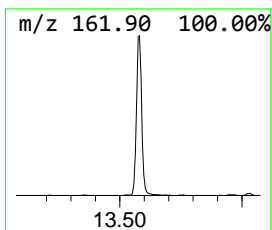
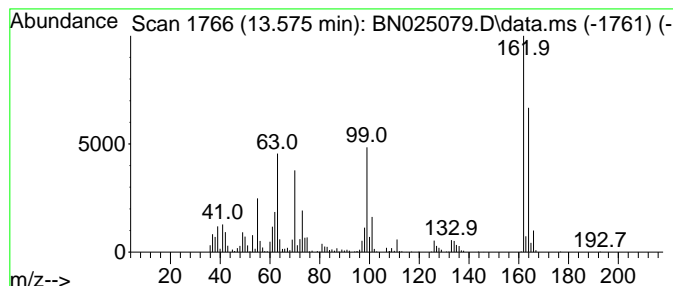
Quant Method : Z:\svoasrv\HPCHEM1\BNA_N\Methods\SFAM-EPA-BN041023.M
 Quant Title : SVOA CALIBRATION

TIC Library : C:\Database\NIST20.L
 TIC Integration Parameters: LSCINT.P

 Peak Number 14 Phenol, 3,5-dichloro- Concentration Rank 12

R.T.	EstConc	Area	Relative to ISTD	R.T.
13.575	5.01 ng/ul	822728	Acenaphthene-d10	14.563

Hit#	of 5	Tentative ID	MW	MolForm	CAS#	Qual
1		Phenol, 3,5-dichloro-	162	C6H4Cl2O	000591-35-5	97
2		Phenol, 3,5-dichloro-	162	C6H4Cl2O	000591-35-5	97
3		Phenol, 3,4-dichloro-	162	C6H4Cl2O	000095-77-2	97
4		Phenol, 3,4-dichloro-	162	C6H4Cl2O	000095-77-2	97
5		Phenol, 3,4-dichloro-	162	C6H4Cl2O	000095-77-2	97



Data Path : Z:\svoasrv\HPCHEM1\BNA_N\Data\BN042223\
 Data File : BN025079.D
 Acq On : 22 Apr 2023 16:56
 Operator : CG/JU
 Sample : 02378-15
 Misc :
 ALS Vial : 11 Sample Multiplier: 1

Instrument :
 BNA_N
 ClientSampleId :
 COMK8

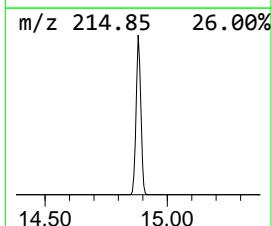
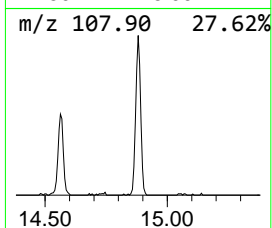
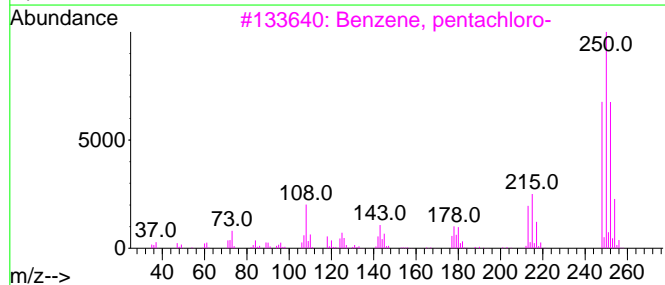
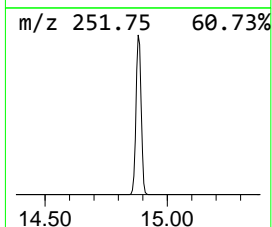
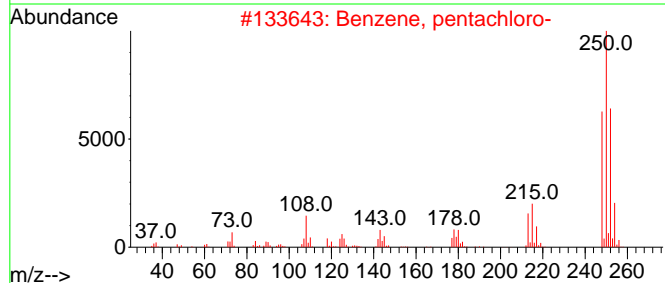
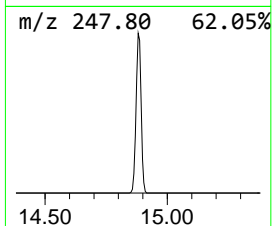
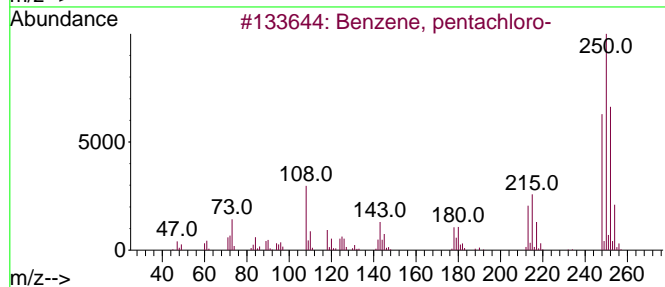
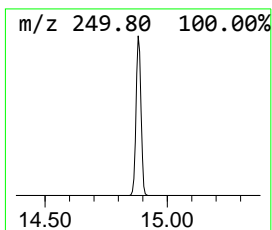
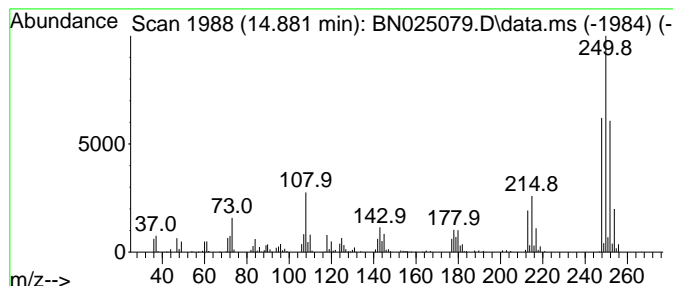
Quant Method : Z:\svoasrv\HPCHEM1\BNA_N\Methods\SFAM-EPA-BN041023.M
 Quant Title : SVOA CALIBRATION

TIC Library : C:\Database\NIST20.L
 TIC Integration Parameters: LSCINT.P

 Peak Number 15 Benzene, pentachloro- Concentration Rank 14

R.T.	EstConc	Area	Relative to ISTD	R.T.
14.881	4.01 ng/ul	658249	Acenaphthene-d10	14.563

Hit#	of	5	Tentative ID	MW	MolForm	CAS#	Qual
1			Benzene, pentachloro-	248	C6HC15	000608-93-5	99
2			Benzene, pentachloro-	248	C6HC15	000608-93-5	99
3			Benzene, pentachloro-	248	C6HC15	000608-93-5	99
4			Benzene, pentachloro-	248	C6HC15	000608-93-5	98
5			Benzene, pentachloro-	248	C6HC15	000608-93-5	98



Data Path : Z:\svoasrv\HPCHEM1\BNA_N\Data\BN042223\
 Data File : BN025079.D
 Acq On : 22 Apr 2023 16:56
 Operator : CG/JU
 Sample : 02378-15
 Misc :
 ALS Vial : 11 Sample Multiplier: 1

Instrument :
 BNA_N
 ClientSampleId :
 COMK8

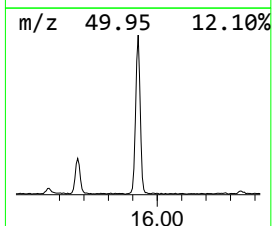
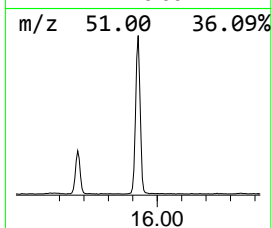
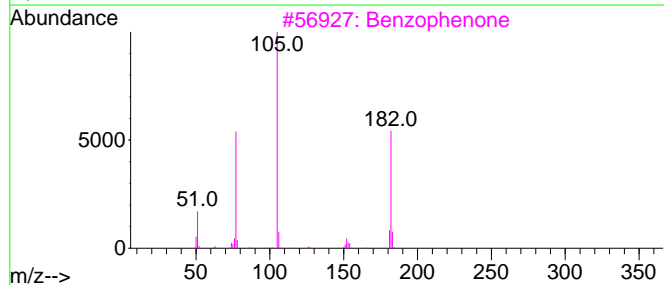
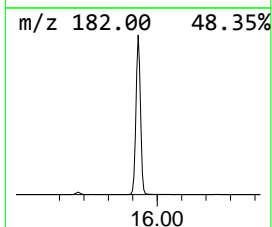
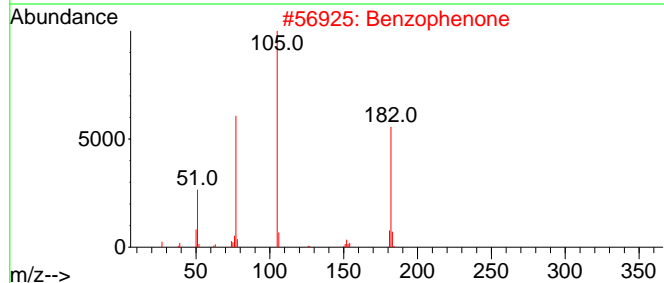
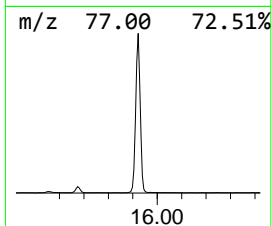
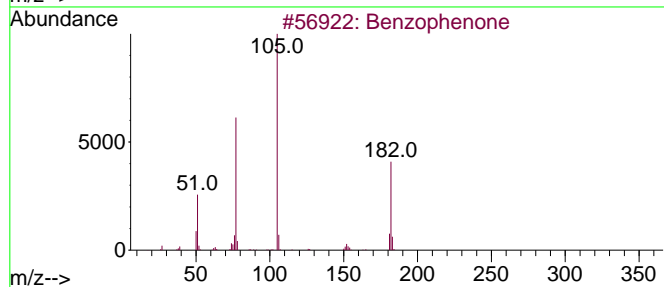
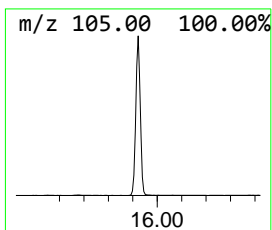
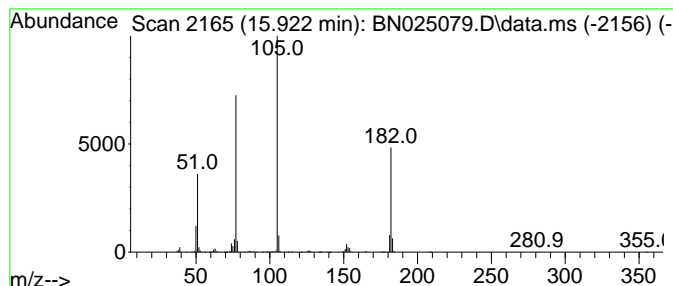
Quant Method : Z:\svoasrv\HPCHEM1\BNA_N\Methods\SFAM-EPA-BN041023.M
 Quant Title : SVOA CALIBRATION

TIC Library : C:\Database\NIST20.L
 TIC Integration Parameters: LSCINT.P

 Peak Number 16 Benzophenone Concentration Rank 7

R.T.	EstConc	Area	Relative to ISTD	R.T.
15.922	13.80 ng/ul	2264690	Acenaphthene-d10	14.563

Hit#	of	5	Tentative ID	MW	MolForm	CAS#	Qual
1			Benzophenone	182	C13H10O	000119-61-9	97
2			Benzophenone	182	C13H10O	000119-61-9	97
3			Benzophenone	182	C13H10O	000119-61-9	97
4			Benzophenone	182	C13H10O	000119-61-9	91
5			Benzophenone	182	C13H10O	000119-61-9	91



Data Path : Z:\svoasrv\HPCHEM1\BNA_N\Data\BN042223\
 Data File : BN025079.D
 Acq On : 22 Apr 2023 16:56
 Operator : CG/JU
 Sample : 02378-15
 Misc :
 ALS Vial : 11 Sample Multiplier: 1

Instrument :
 BNA_N
 ClientSampleId :
 COMK8

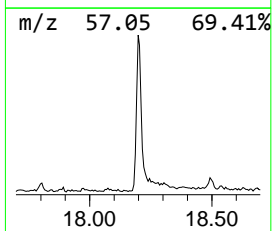
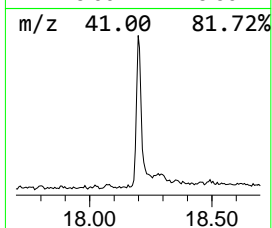
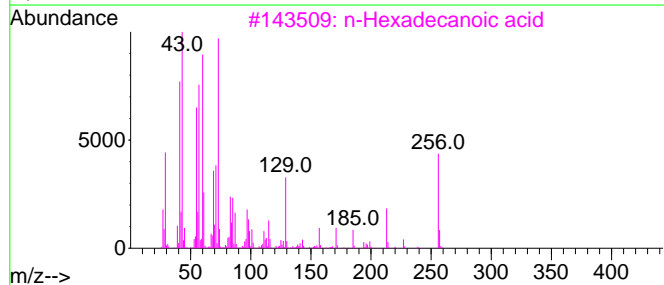
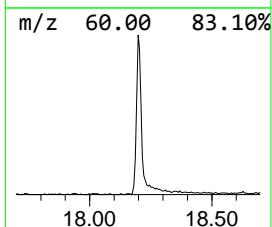
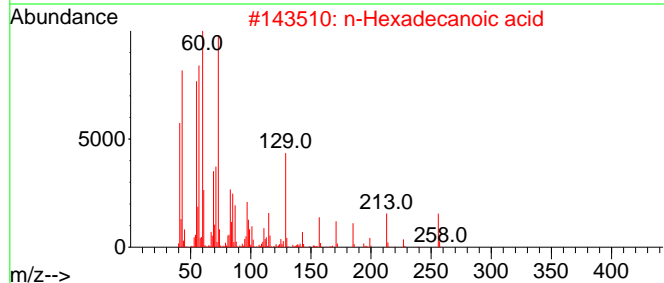
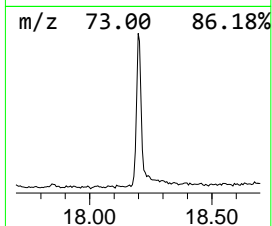
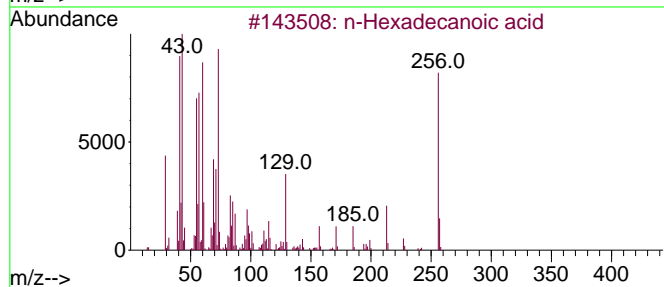
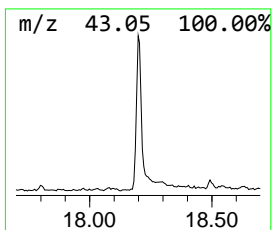
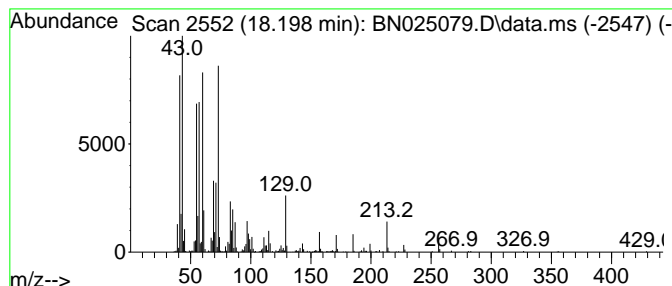
Quant Method : Z:\svoasrv\HPCHEM1\BNA_N\Methods\SFAM-EPA-BN041023.M
 Quant Title : SVOA CALIBRATION

TIC Library : C:\Database\NIST20.L
 TIC Integration Parameters: LSCINT.P

 Peak Number 17 n-Hexadecanoic acid Concentration Rank 15

R.T.	EstConc	Area	Relative to ISTD	R.T.
18.198	3.75 ng/ul	723270	Phenanthrene-d10	17.310

Hit#	of 5	Tentative ID	MW	MolForm	CAS#	Qual
1		n-Hexadecanoic acid	256	C16H32O2	000057-10-3	99
2		n-Hexadecanoic acid	256	C16H32O2	000057-10-3	99
3		n-Hexadecanoic acid	256	C16H32O2	000057-10-3	98
4		n-Hexadecanoic acid	256	C16H32O2	000057-10-3	97
5		Pentadecanoic acid	242	C15H30O2	001002-84-2	90



Data Path : Z:\svoasrv\HPCHEM1\BNA_N\Data\BN042223\
 Data File : BN025079.D
 Acq On : 22 Apr 2023 16:56
 Operator : CG/JU
 Sample : 02378-15
 Misc :
 ALS Vial : 11 Sample Multiplier: 1

Instrument :
 BNA_N
 ClientSampleId :
 COMK8

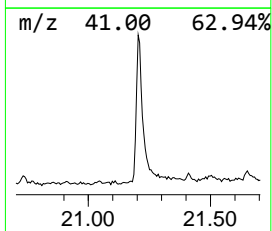
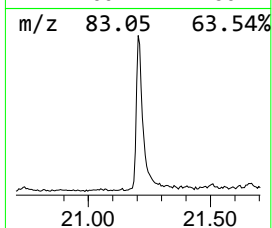
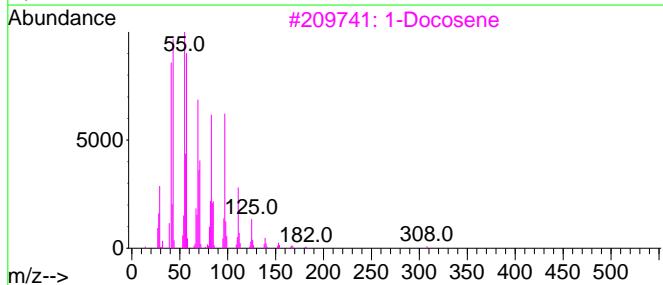
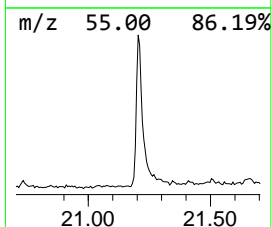
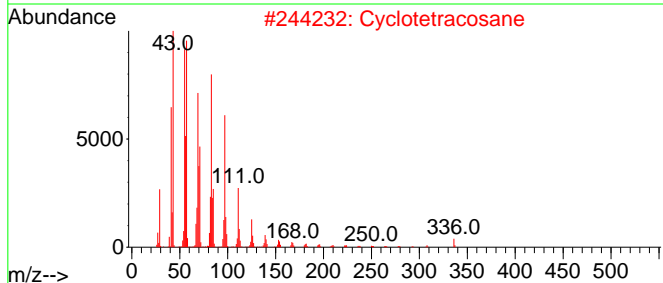
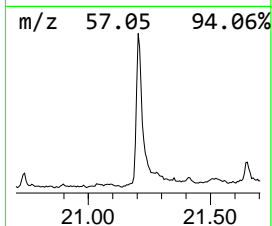
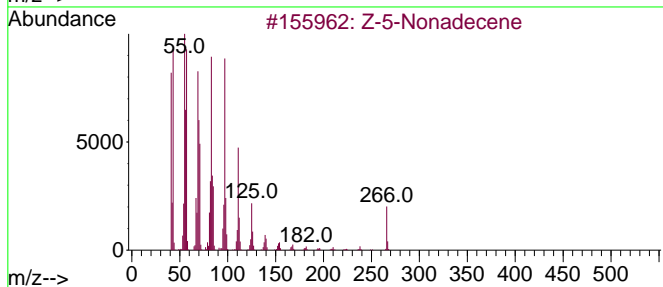
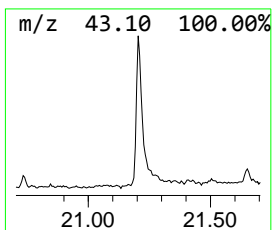
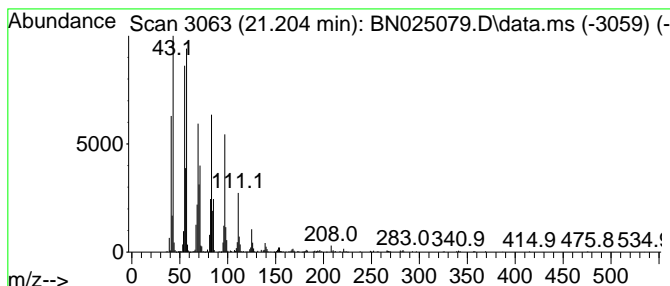
Quant Method : Z:\svoasrv\HPCHEM1\BNA_N\Methods\SFAM-EPA-BN041023.M
 Quant Title : SVOA CALIBRATION

TIC Library : C:\Database\NIST20.L
 TIC Integration Parameters: LSCINT.P

 Peak Number 18 (DEL) Alkane: Straight-Chai... Concentration Rank 13

R.T.	EstConc	Area	Relative to ISTD	R.T.
21.204	4.57 ng/ul	1013540	Chrysene-d12	21.504

Hit#	of 5	Tentative ID	MW	MolForm	CAS#	Qual
1		Z-5-Nonadecene	266	C19H38	1000131-11-8	95
2		Cyclotetracosane	336	C24H48	000297-03-0	95
3		1-Docosene	308	C22H44	001599-67-3	95
4		Pentafluoropropionic acid, penta...	374	C18H31F5O2	959092-08-1	94
5		Heptafluorobutyric acid, pentade...	424	C19H31F7O2	959261-23-5	94



Data Path : Z:\svoasrv\HPCHEM1\BNA_N\Data\BN042223\
 Data File : BN025079.D
 Acq On : 22 Apr 2023 16:56
 Operator : CG/JU
 Sample : 02378-15
 Misc :
 ALS Vial : 11 Sample Multiplier: 1

Instrument :
 BNA_N
 ClientSampleId :
 COMK8

Quant Method : Z:\svoasrv\HPCHEM1\BNA_N\Methods\SFAM-EPA-BN041023.M
 Quant Title : SVOA CALIBRATION

TIC Library : C:\Database\NIST0.L
 TIC Integration Parameters: LSCINT.P

TIC Top Hit name	RT	EstConc	Units	Response	--Internal Standard--			
					#	RT	Resp	Conc
Benzene, 1-brom...	9.422	12.9	ng/ul	1606940	2	10.751	2490110	20.0
Benzene, 2,4-di...	9.651	2.3	ng/ul	286148	2	10.751	2490110	20.0
Benzene, 1-brom...	9.740	6.1	ng/ul	760876	2	10.751	2490110	20.0
Benzene, 1,3,5-...	10.646	1372.0	ng/ul	170824000	2	10.751	2490110	20.0
Benzene, 1-chlo...	11.340	23.4	ng/ul	2912870	2	10.751	2490110	20.0
Benzene, 1-chlo...	11.551	6.6	ng/ul	817735	2	10.751	2490110	20.0
4-Chloro-2-nitr...	12.028	3.2	ng/ul	397633	2	10.751	2490110	20.0
Benzene, 1,2,3,...	13.369	140.0	ng/ul	22974900	3	14.563	3281570	20.0
Phenol, 3,5-dic...	13.575	5.0	ng/ul	822728	3	14.563	3281570	20.0
Benzene, pentac...	14.881	4.0	ng/ul	658249	3	14.563	3281570	20.0
Benzophenone	15.922	13.8	ng/ul	2264690	3	14.563	3281570	20.0
n-Hexadecanoic ...	18.198	3.8	ng/ul	723270	4	17.310	3856400	20.0
(DEL) Alkane: S...	21.204	4.6	ng/ul	1013540	5	21.504	4433310	20.0