

Data Path : Z:\svoasrv\HPCHEM1\BNA_N\Data\BN042223\
 Data File : BN025090.D
 Acq On : 23 Apr 2023 00:04
 Operator : CG/JU
 Sample : 02399-18
 Misc :
 ALS Vial : 22 Sample Multiplier: 1

Instrument :
 BNA_N
 ClientSampleId :
 COMN6

Integration Parameters: LSCINT.P

Integrator: RTE
 Smoothing : OFF Filtering: 5
 Sampling : 1 Min Area: 0.1 % of largest Peak
 Start Thrs: 0.2 Max Peaks: 100
 Stop Thrs : 0 Peak Location: TOP

If leading or trailing edge < 100 prefer < Baseline drop else tangent >
 Peak separation: 5

Method : Z:\svoasrv\HPCHEM1\BNA_N\Methods\SFAM-EPA-BN041023.M
 Title : SVOA CALIBRATION

Signal : TIC: BN025090.D\data.ms

peak #	R.T. min	first scan	max scan	last scan	PK TY	peak height	corr. area	corr. % max.	% of total
1	3.723	89	91	107	rBV	400380	707367	0.50%	0.151%
2	5.211	335	344	363	rBV	35445685	62460693	44.33%	13.343%
3	7.075	655	661	672	rVB	4066661	651238	0.46%	0.139%
4	7.246	682	690	701	rBV	1598752	2553325	1.81%	0.545%
5	7.446	715	724	734	rBV	1532778	2418503	1.72%	0.517%
6	7.805	777	785	797	rBV	6362107	10703014	7.60%	2.286%
7	7.958	797	811	827	rVV	19762174	36846745	26.15%	7.871%
8	8.316	856	872	873	rBV4	46075726	140909828	100.00%	30.101%
9	8.628	919	925	936	rVB	1203259	1884249	1.34%	0.403%
10	9.087	995	1003	1012	rBV	2130205	3365139	2.39%	0.719%
11	9.422	1052	1060	1068	rBV	455359	759025	0.54%	0.162%
12	9.740	1109	1114	1119	rVV	180109	323389	0.23%	0.069%
13	9.810	1119	1126	1133	rVV	1704770	2708005	1.92%	0.578%
14	10.352	1206	1218	1235	rBV	2169449	3729718	2.65%	0.797%
15	10.616	1251	1263	1269	rBV	38124043	82089307	58.26%	17.536%
16	10.734	1277	1283	1289	rBV	2030197	3277977	2.33%	0.700%
17	10.869	1298	1306	1320	rBV	1916204	3281343	2.33%	0.701%
18	11.122	1340	1349	1360	rVB	10330367	17559081	12.46%	3.751%
19	12.757	1615	1627	1635	rBV	1154069	1887107	1.34%	0.403%
20	13.363	1721	1730	1739	rBV	748115	1239552	0.88%	0.265%
21	13.463	1739	1747	1754	rVB4	68739	157054	0.11%	0.034%
22	13.581	1761	1767	1780	rVB	355920	545859	0.39%	0.117%
23	13.975	1824	1834	1842	rBV	4570030	6171965	4.38%	1.318%
24	14.257	1870	1882	1892	rBV2	4974568	7230970	5.13%	1.545%
25	14.563	1927	1934	1942	rBV	3011002	4340185	3.08%	0.927%
26	14.757	1961	1967	1983	rBV	431821	706101	0.50%	0.151%
27	15.557	2095	2103	2109	rVV	6430890	9083803	6.45%	1.940%
28	15.675	2116	2123	2138	rBV	2683907	3471972	2.46%	0.742%
29	15.922	2159	2165	2172	rBV	1246182	1597554	1.13%	0.341%
30	17.310	2394	2401	2407	rBV	3845225	5258646	3.73%	1.123%
31	17.410	2412	2418	2433	rVB	7171163	10152626	7.21%	2.169%
32	18.198	2547	2552	2557	rBV	169581	228915	0.16%	0.049%
33	19.339	2741	2746	2750	rBV	101295	159879	0.11%	0.034%
34	19.704	2802	2808	2814	rBV	8808631	12300037	8.73%	2.628%
35	21.204	3059	3063	3073	rBV	270832	506522	0.36%	0.108%
36	21.504	3108	3114	3122	rBV	4780416	6221882	4.42%	1.329%

Data Path : Z:\svoasrv\HPCHEM1\BNA_N\Data\BN042223\
Data File : BN025090.D
Acq On : 23 Apr 2023 00:04
Operator : CG/JU
Sample : 02399-18
Misc :
ALS Vial : 22 Sample Multiplier: 1

Instrument :
BNA_N
ClientSampleId :
COMN6

Integration Parameters: LSCINT.P
Integrator: RTE
Smoothing : OFF Filtering: 5
Sampling : 1 Min Area: 0.1 % of largest Peak
Start Thrs: 0.2 Max Peaks: 100
Stop Thrs : 0 Peak Location: TOP

If leading or trailing edge < 100 prefer < Baseline drop else tangent >
Peak separation: 5

Method : Z:\svoasrv\HPCHEM1\BNA_N\Methods\SFAM-EPA-BN041023.M
Title : SVOA CALIBRATION

37	23.792	3495	3503	3518	rBV2	6761874	13733301	9.75%	2.934%
38	23.945	3521	3529	3547	rVB2	2970862	6554316	4.65%	1.400%
39	24.551	3629	3632	3638	rVB2	206768	349630	0.25%	0.075%

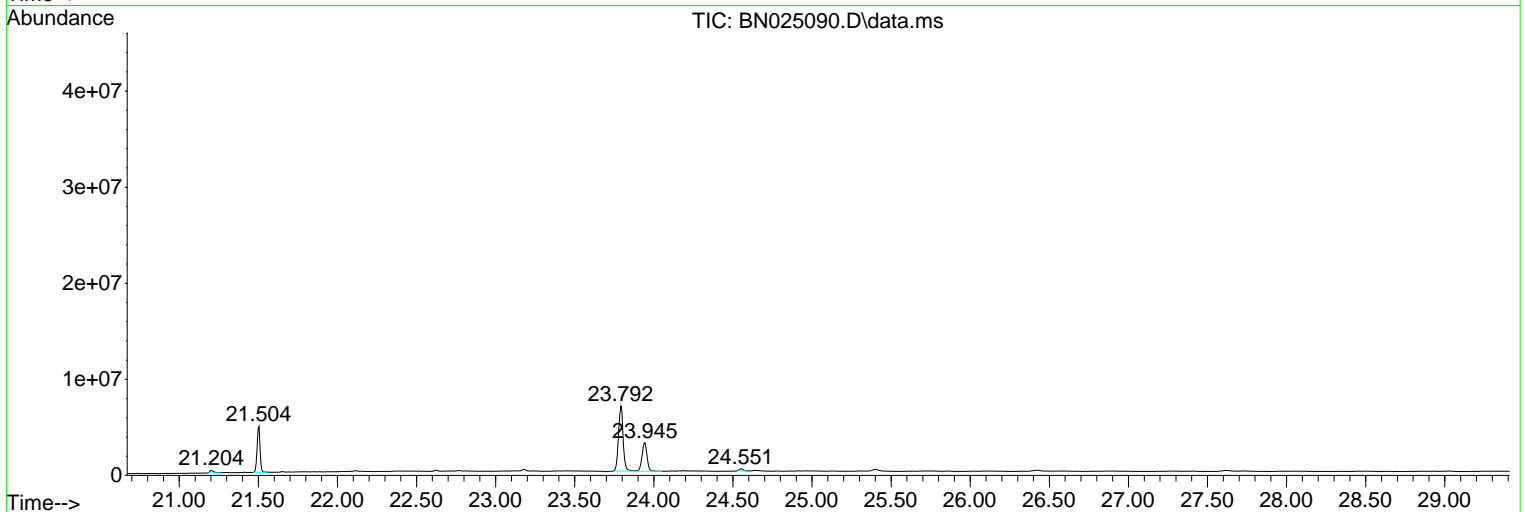
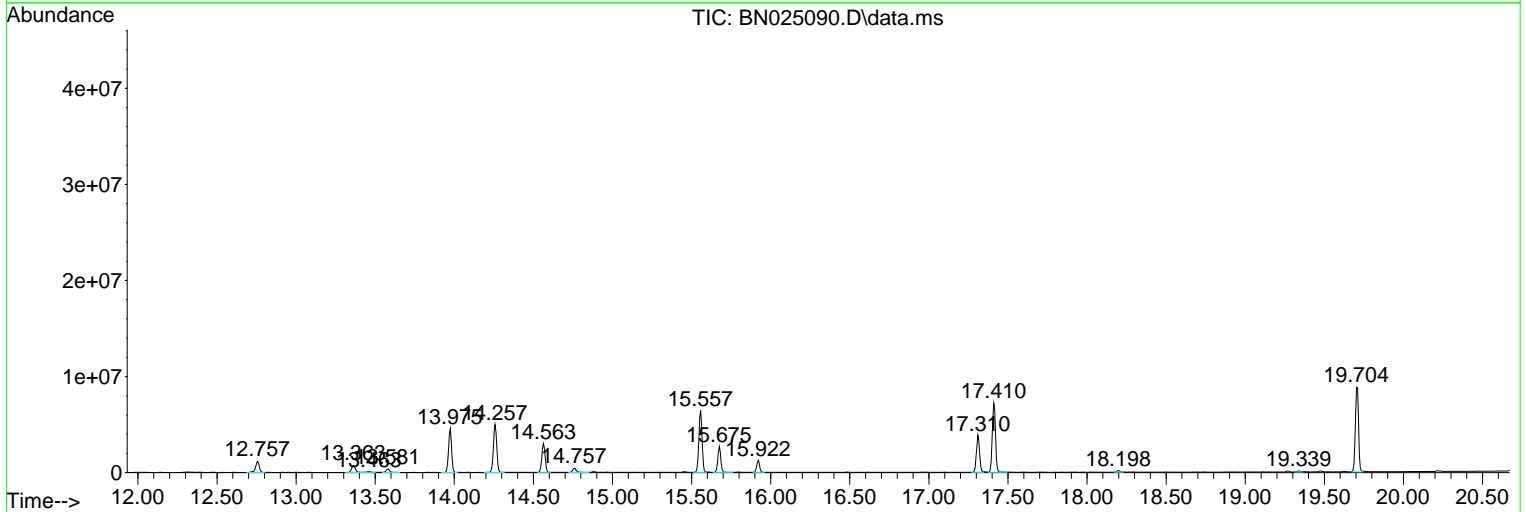
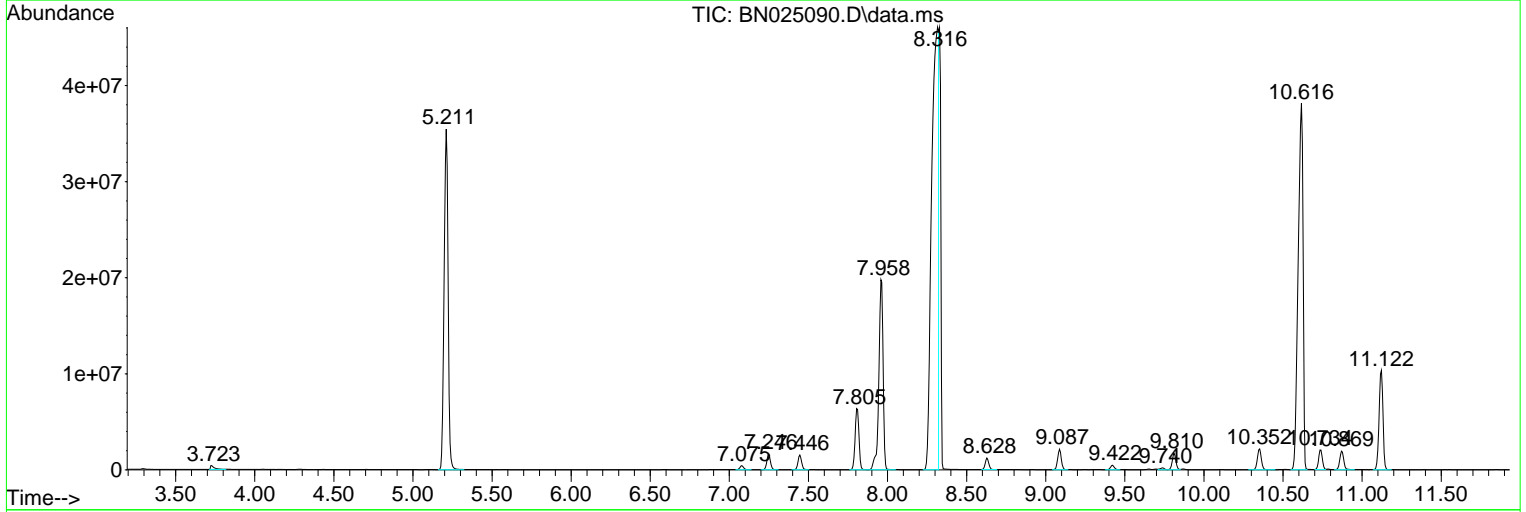
Sum of corrected areas: 468125822

Data Path : Z:\svoasrv\HPCHEM1\BNA_N\Data\BN042223\
 Data File : BN025090.D
 Acq On : 23 Apr 2023 00:04
 Operator : CG/JU
 Sample : 02399-18
 Misc :
 ALS Vial : 22 Sample Multiplier: 1

Instrument :
 BNA_N
 ClientSampleId :
 COMN6

Quant Method : Z:\svoasrv\HPCHEM1\BNA_N\Methods\SFAM-EPA-BN041023.M
 Quant Title : SVOA CALIBRATION

TIC Library : C:\Database\NIST20.L
 TIC Integration Parameters: LSCINT.P



Data Path : Z:\svoasrv\HPCHEM1\BNA_N\Data\BN042223\
 Data File : BN025090.D
 Acq On : 23 Apr 2023 00:04
 Operator : CG/JU
 Sample : 02399-18
 Misc :
 ALS Vial : 22 Sample Multiplier: 1

Instrument :
 BNA_N
 ClientSampleId :
 COMN6

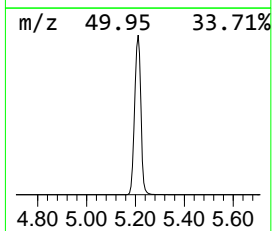
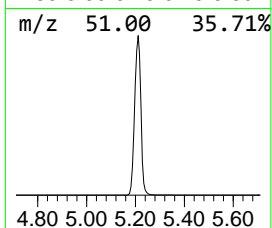
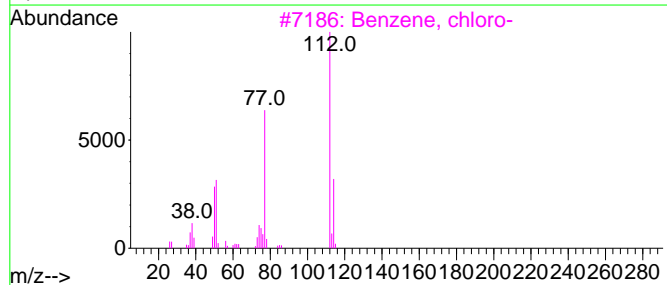
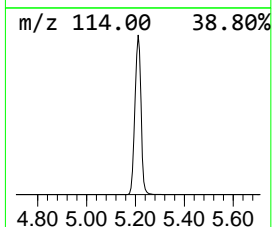
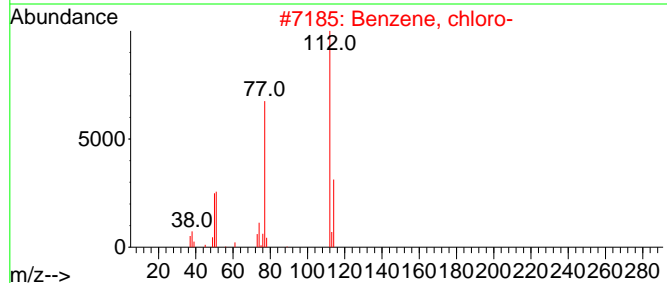
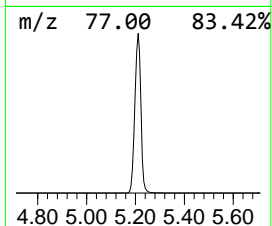
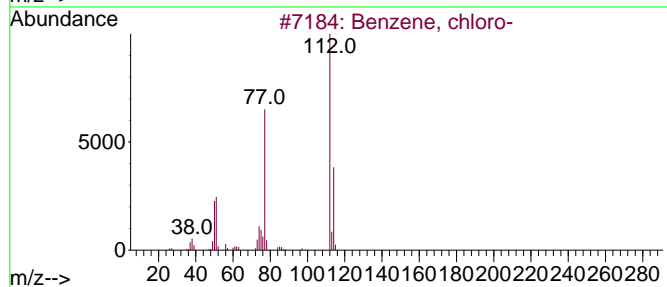
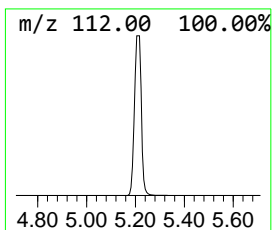
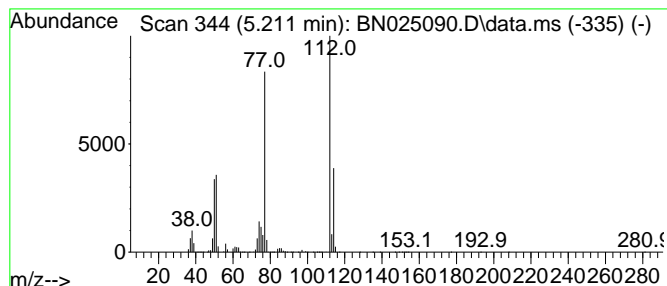
Quant Method : Z:\svoasrv\HPCHEM1\BNA_N\Methods\SFAM-EPA-BN041023.M
 Quant Title : SVOA CALIBRATION

TIC Library : C:\Database\NIST20.L
 TIC Integration Parameters: LSCINT.P

 Peak Number 1 Benzene, chloro- Concentration Rank 4

R.T.	EstConc	Area	Relative to ISTD	R.T.
5.211	33.90 ng/ul	62460700	1,4-Dichlorobenzene-d4	7.922

Hit#	of	5	Tentative ID	MW	MolForm	CAS#	Qual
1			Benzene, chloro-	112	C6H5Cl	000108-90-7	97
2			Benzene, chloro-	112	C6H5Cl	000108-90-7	96
3			Benzene, chloro-	112	C6H5Cl	000108-90-7	95
4			Benzene, chloro-	112	C6H5Cl	000108-90-7	95
5			Benzene, chloro-	112	C6H5Cl	000108-90-7	94



Data Path : Z:\svoasrv\HPCHEM1\BNA_N\Data\BN042223\
 Data File : BN025090.D
 Acq On : 23 Apr 2023 00:04
 Operator : CG/JU
 Sample : 02399-18
 Misc :
 ALS Vial : 22 Sample Multiplier: 1

Instrument :
 BNA_N
 ClientSampleId :
 COMN6

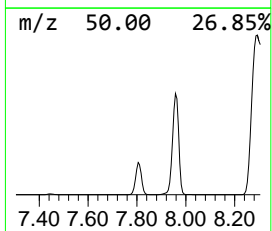
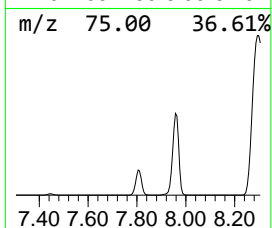
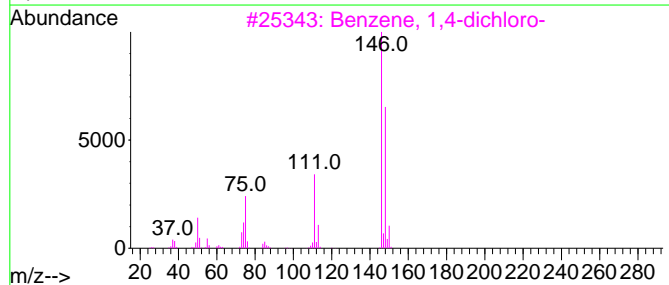
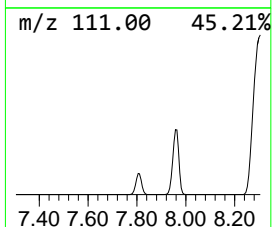
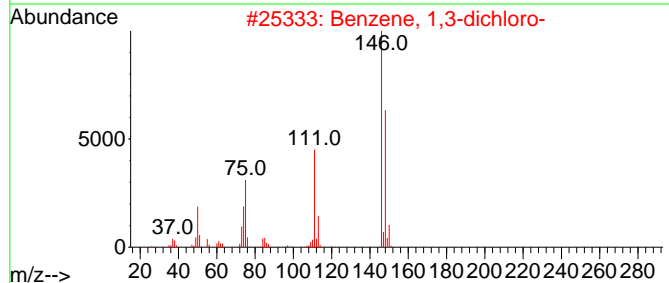
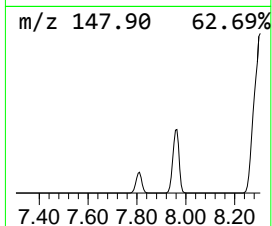
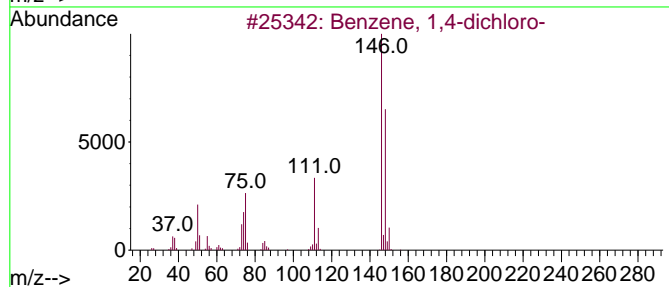
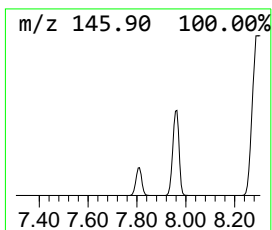
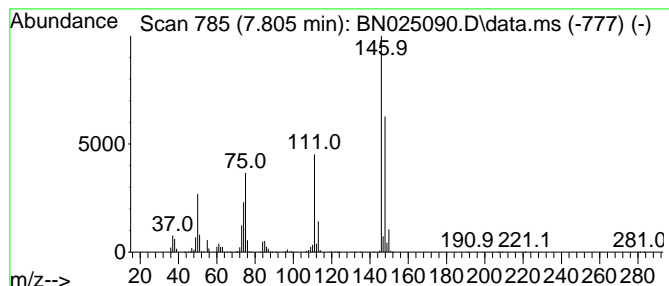
Quant Method : Z:\svoasrv\HPCHEM1\BNA_N\Methods\SFAM-EPA-BN041023.M
 Quant Title : SVOA CALIBRATION

TIC Library : C:\Database\NIST20.L
 TIC Integration Parameters: LSCINT.P

 Peak Number 2 Benzene, 1,4-dichloro- Concentration Rank 6

R.T.	EstConc	Area	Relative to ISTD	R.T.
7.805	5.81 ng/ul	10703000	1,4-Dichlorobenzene-d4	7.922

Hit#	of	5	Tentative ID	MW	MolForm	CAS#	Qual
1			Benzene, 1,4-dichloro-	146	C6H4Cl2	000106-46-7	98
2			Benzene, 1,3-dichloro-	146	C6H4Cl2	000541-73-1	98
3			Benzene, 1,4-dichloro-	146	C6H4Cl2	000106-46-7	97
4			Benzene, 1,3-dichloro-	146	C6H4Cl2	000541-73-1	97
5			Benzene, 1,3-dichloro-	146	C6H4Cl2	000541-73-1	97



Data Path : Z:\svoasrv\HPCHEM1\BNA_N\Data\BN042223\
 Data File : BN025090.D
 Acq On : 23 Apr 2023 00:04
 Operator : CG/JU
 Sample : 02399-18
 Misc :
 ALS Vial : 22 Sample Multiplier: 1

Instrument :
 BNA_N
 ClientSampleId :
 COMN6

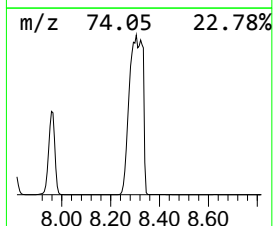
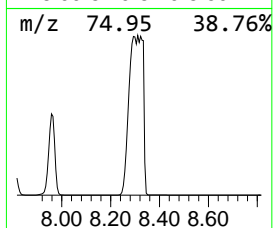
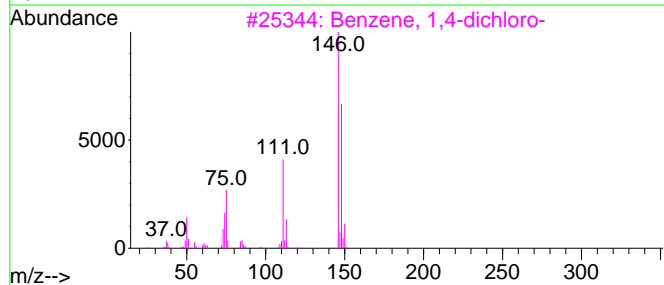
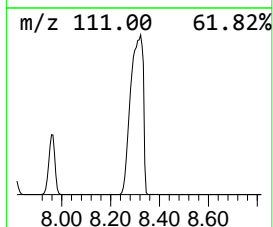
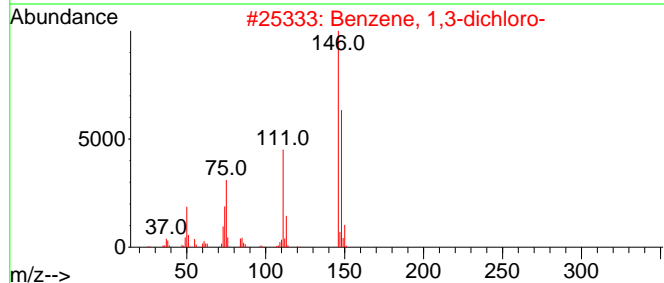
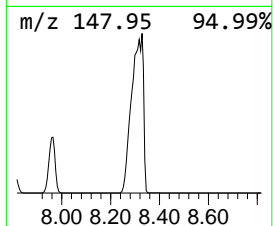
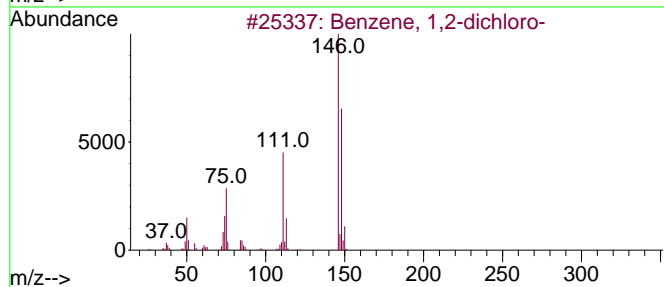
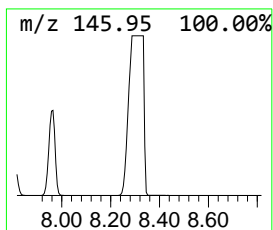
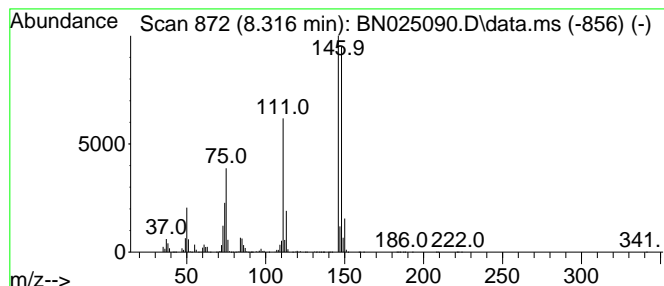
Quant Method : Z:\svoasrv\HPCHEM1\BNA_N\Methods\SFAM-EPA-BN041023.M
 Quant Title : SVOA CALIBRATION

TIC Library : C:\Database\NIST20.L
 TIC Integration Parameters: LSCINT.P

 Peak Number 3 Benzene, 1,2-dichloro- Concentration Rank 3

R.T.	EstConc	Area	Relative to ISTD	R.T.
8.316	76.48 ng/ul	140910000	1,4-Dichlorobenzene-d4	7.922

Hit#	of	5	Tentative ID	MW	MolForm	CAS#	Qual
1			Benzene, 1,2-dichloro-	146	C6H4Cl2	000095-50-1	98
2			Benzene, 1,3-dichloro-	146	C6H4Cl2	000541-73-1	96
3			Benzene, 1,4-dichloro-	146	C6H4Cl2	000106-46-7	96
4			Benzene, 1,2-dichloro-	146	C6H4Cl2	000095-50-1	94
5			Benzene, 1,3-dichloro-	146	C6H4Cl2	000541-73-1	93



Data Path : Z:\svoasrv\HPCHEM1\BNA_N\Data\BN042223\
 Data File : BN025090.D
 Acq On : 23 Apr 2023 00:04
 Operator : CG/JU
 Sample : 02399-18
 Misc :
 ALS Vial : 22 Sample Multiplier: 1

Instrument :
 BNA_N
 ClientSampleId :
 COMN6

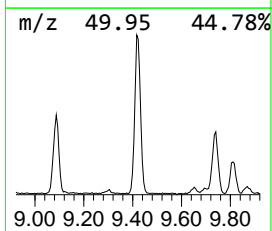
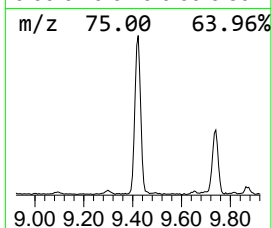
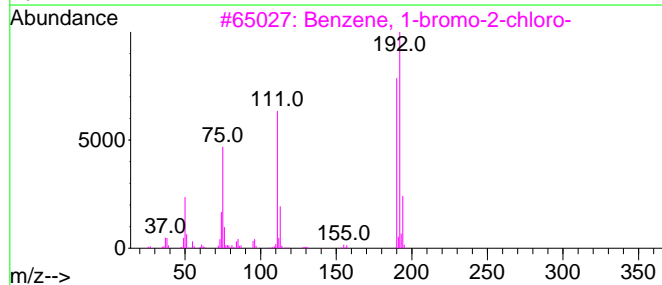
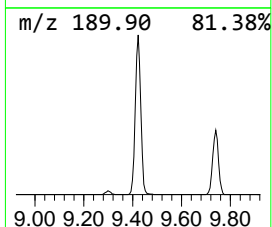
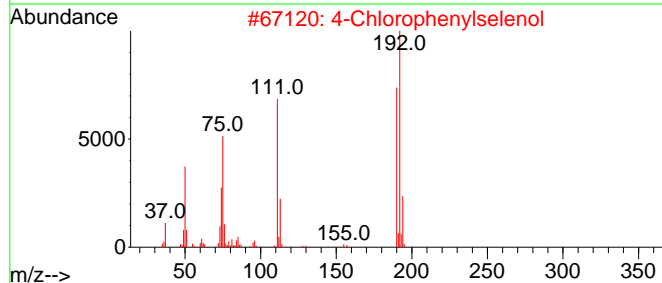
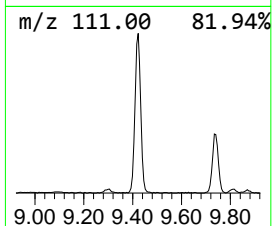
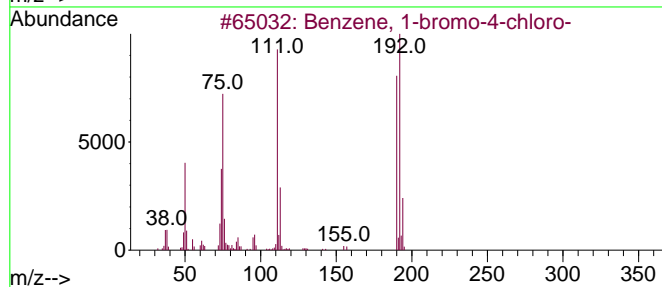
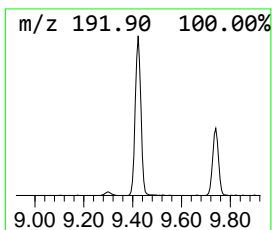
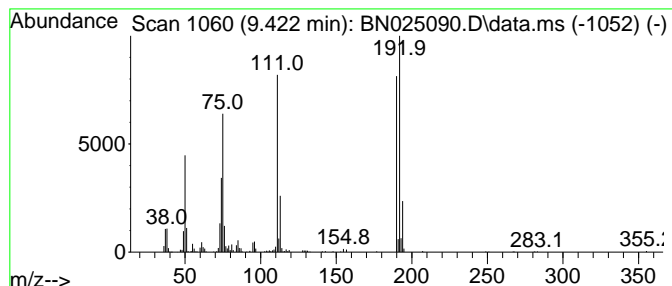
Quant Method : Z:\svoasrv\HPCHEM1\BNA_N\Methods\SFAM-EPA-BN041023.M
 Quant Title : SVOA CALIBRATION

TIC Library : C:\Database\NIST20.L
 TIC Integration Parameters: LSCINT.P

 Peak Number 4 Benzene, 1-bromo-4-chloro- Concentration Rank 8

R.T.	EstConc	Area	Relative to ISTD	R.T.
9.422	4.63 ng/ul	759025	Naphthalene-d8	10.740

Hit#	of	5	Tentative ID	MW	MolForm	CAS#	Qual
1			Benzene, 1-bromo-4-chloro-	190	C6H4BrCl	000106-39-8	99
2			4-Chlorophenylselenol	192	C6H5ClSe	016645-10-6	99
3			Benzene, 1-bromo-2-chloro-	190	C6H4BrCl	000694-80-4	98
4			Benzene, 1-bromo-3-chloro-	190	C6H4BrCl	000108-37-2	97
5			Benzene, 1-bromo-4-chloro-	190	C6H4BrCl	000106-39-8	96



Data Path : Z:\svoasrv\HPCHEM1\BNA_N\Data\BN042223\
 Data File : BN025090.D
 Acq On : 23 Apr 2023 00:04
 Operator : CG/JU
 Sample : 02399-18
 Misc :
 ALS Vial : 22 Sample Multiplier: 1

Instrument :
 BNA_N
 ClientSampleId :
 COMN6

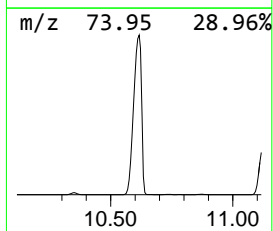
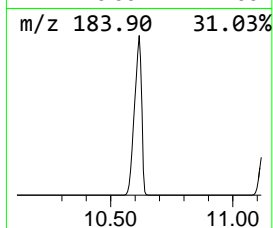
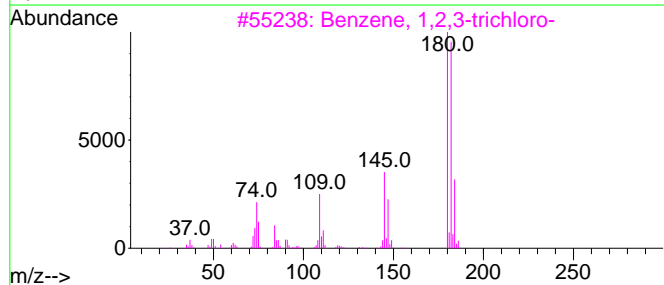
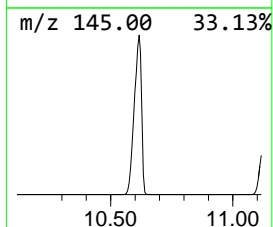
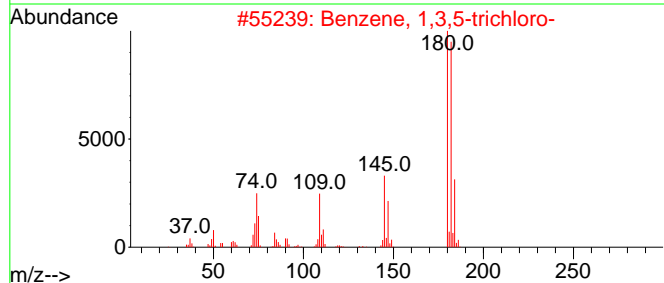
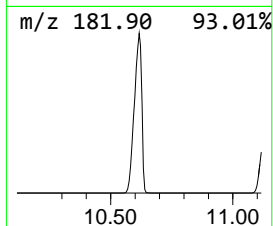
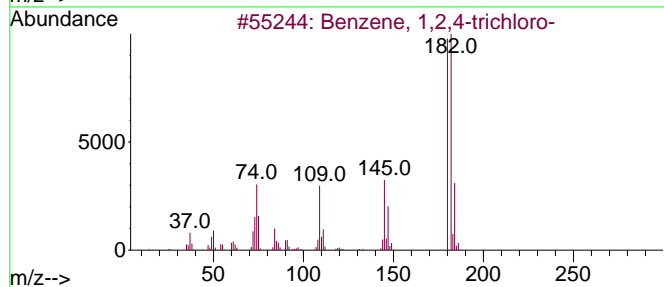
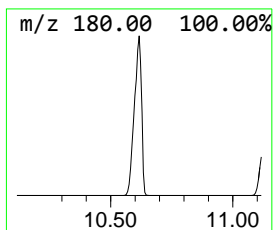
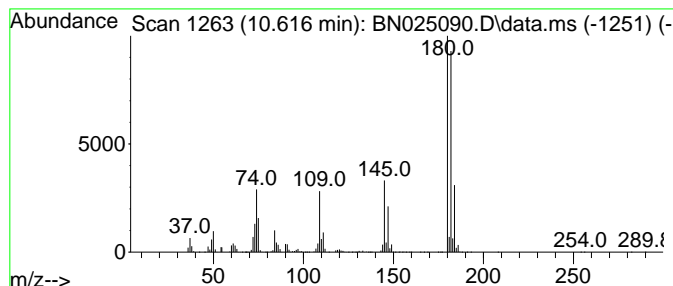
Quant Method : Z:\svoasrv\HPCHEM1\BNA_N\Methods\SFAM-EPA-BN041023.M
 Quant Title : SVOA CALIBRATION

TIC Library : C:\Database\NIST20.L
 TIC Integration Parameters: LSCINT.P

 Peak Number 5 Benzene, 1,2,4-trichloro- Concentration Rank 1

R.T.	EstConc	Area	Relative to ISTD	R.T.
10.616	500.85 ng/ul	82089300	Naphthalene-d8	10.740

Hit#	of	5	Tentative ID	MW	MolForm	CAS#	Qual
1			Benzene, 1,2,4-trichloro-	180	C6H3Cl3	000120-82-1	98
2			Benzene, 1,3,5-trichloro-	180	C6H3Cl3	000108-70-3	98
3			Benzene, 1,2,3-trichloro-	180	C6H3Cl3	000087-61-6	98
4			Benzene, 1,2,3-trichloro-	180	C6H3Cl3	000087-61-6	98
5			Benzene, 1,3,5-trichloro-	180	C6H3Cl3	000108-70-3	97



Data Path : Z:\svoasrv\HPCHEM1\BNA_N\Data\BN042223\
 Data File : BN025090.D
 Acq On : 23 Apr 2023 00:04
 Operator : CG/JU
 Sample : 02399-18
 Misc :
 ALS Vial : 22 Sample Multiplier: 1

Instrument :
 BNA_N
 ClientSampleId :
 COMN6

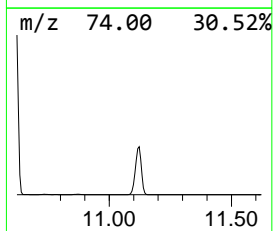
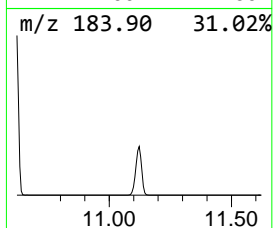
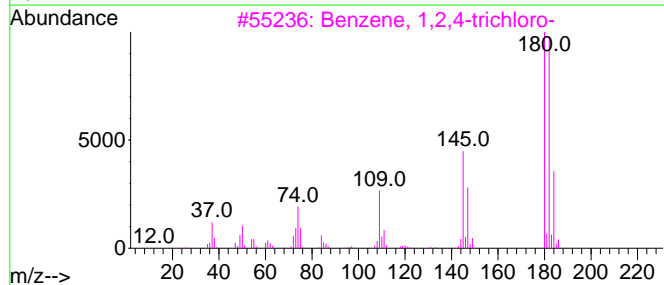
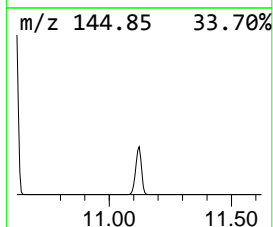
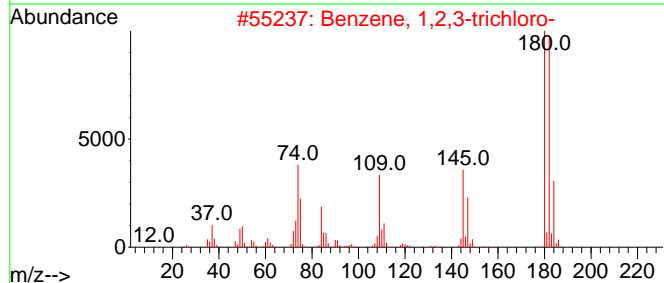
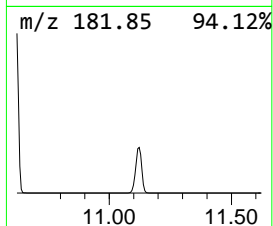
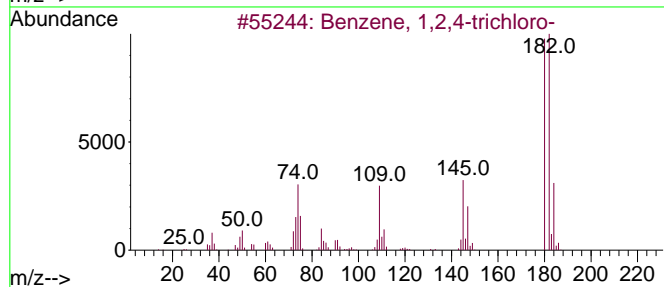
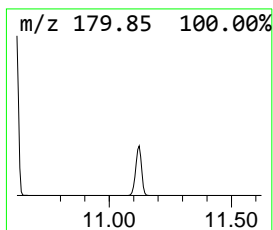
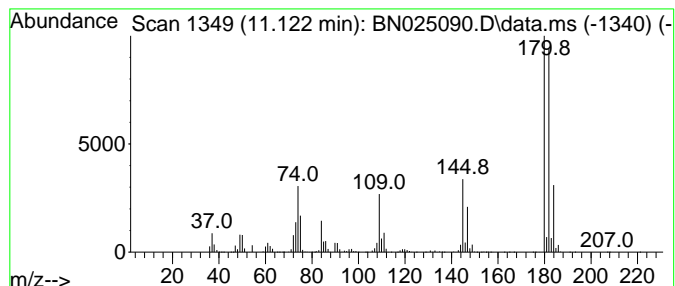
Quant Method : Z:\svoasrv\HPCHEM1\BNA_N\Methods\SFAM-EPA-BN041023.M
 Quant Title : SVOA CALIBRATION

TIC Library : C:\Database\NIST20.L
 TIC Integration Parameters: LSCINT.P

 Peak Number 6 Benzene, 1,2,3-trichloro- Concentration Rank 2

R.T.	EstConc	Area	Relative to ISTD	R.T.
11.122	107.13 ng/ul	17559100	Naphthalene-d8	10.740

Hit#	of	5	Tentative ID	MW	MolForm	CAS#	Qual
1			Benzene, 1,2,4-trichloro-	180	C6H3Cl3	000120-82-1	98
2			Benzene, 1,2,3-trichloro-	180	C6H3Cl3	000087-61-6	98
3			Benzene, 1,2,4-trichloro-	180	C6H3Cl3	000120-82-1	98
4			Benzene, 1,3,5-trichloro-	180	C6H3Cl3	000108-70-3	98
5			Benzene, 1,2,3-trichloro-	180	C6H3Cl3	000087-61-6	98



Data Path : Z:\svoasrv\HPCHEM1\BNA_N\Data\BN042223\
 Data File : BN025090.D
 Acq On : 23 Apr 2023 00:04
 Operator : CG/JU
 Sample : 02399-18
 Misc :
 ALS Vial : 22 Sample Multiplier: 1

Instrument :
 BNA_N
 ClientSampleId :
 COMN6

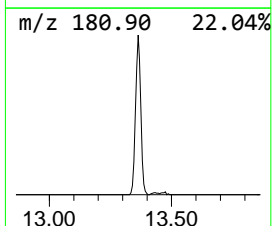
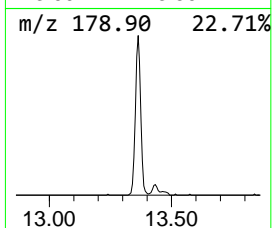
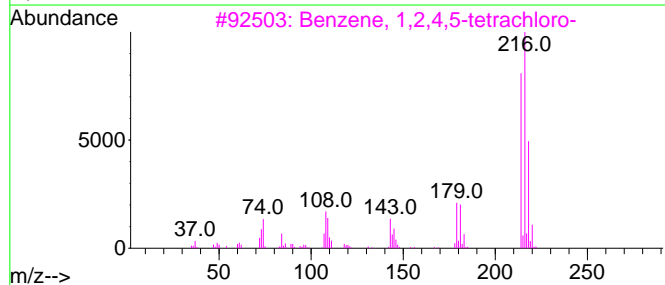
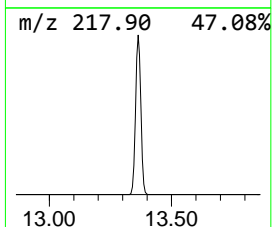
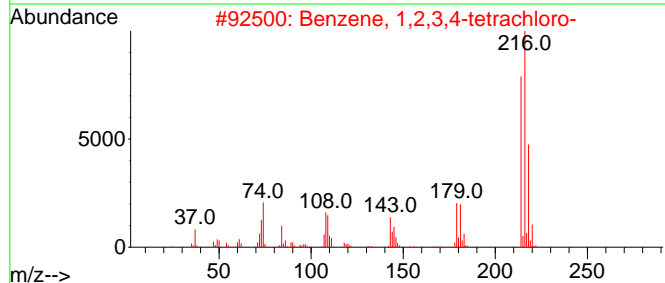
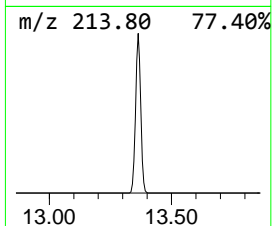
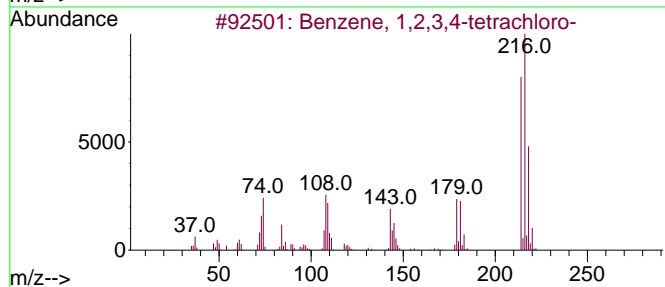
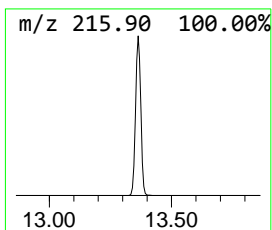
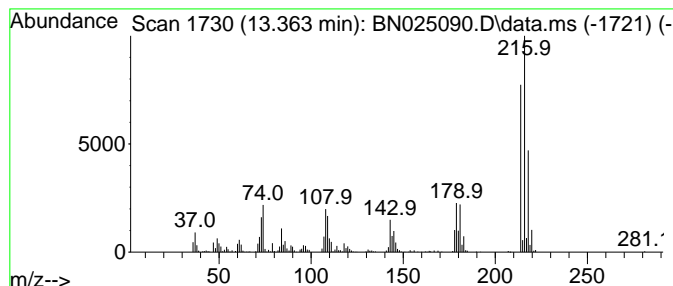
Quant Method : Z:\svoasrv\HPCHEM1\BNA_N\Methods\SFAM-EPA-BN041023.M
 Quant Title : SVOA CALIBRATION

TIC Library : C:\Database\NIST20.L
 TIC Integration Parameters: LSCINT.P

 Peak Number 7 Benzene, 1,2,3,4-tetrachloro- Concentration Rank 7

R.T.	EstConc	Area	Relative to ISTD	R.T.
13.363	5.71 ng/ul	1239550	Acenaphthene-d10	14.563

Hit#	of	5	Tentative ID	MW	MolForm	CAS#	Qual
1			Benzene, 1,2,3,4-tetrachloro-	214	C6H2Cl4	000634-66-2	99
2			Benzene, 1,2,3,4-tetrachloro-	214	C6H2Cl4	000634-66-2	99
3			Benzene, 1,2,4,5-tetrachloro-	214	C6H2Cl4	000095-94-3	99
4			Benzene, 1,2,3,4-tetrachloro-	214	C6H2Cl4	000634-66-2	99
5			Benzene, 1,2,4,5-tetrachloro-	214	C6H2Cl4	000095-94-3	98



Data Path : Z:\svoasrv\HPCHEM1\BNA_N\Data\BN042223\
 Data File : BN025090.D
 Acq On : 23 Apr 2023 00:04
 Operator : CG/JU
 Sample : 02399-18
 Misc :
 ALS Vial : 22 Sample Multiplier: 1

Instrument :
 BNA_N
 ClientSampleId :
 COMN6

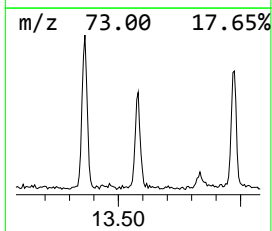
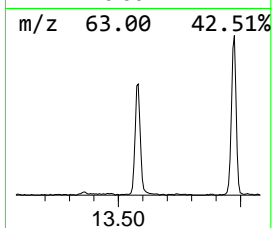
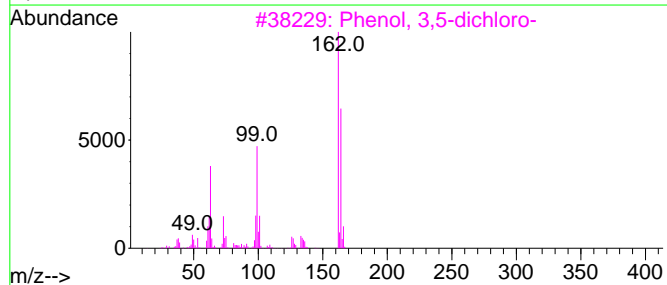
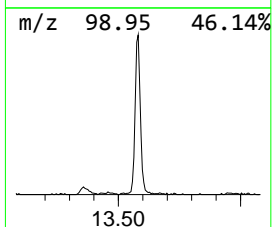
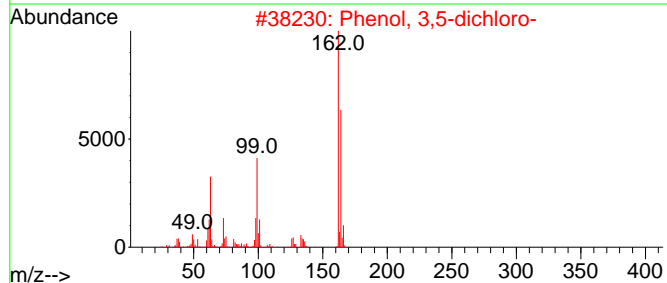
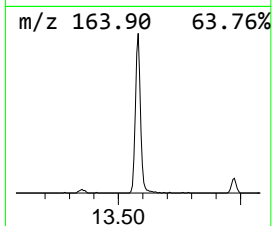
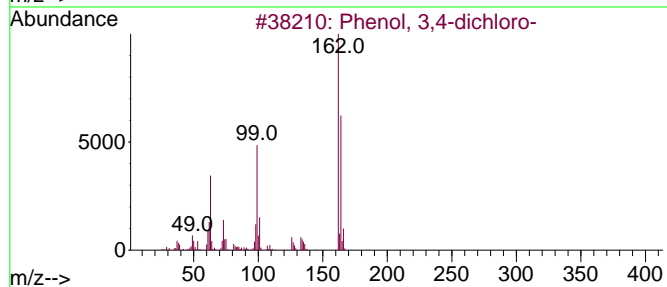
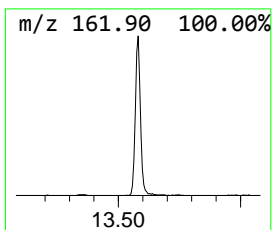
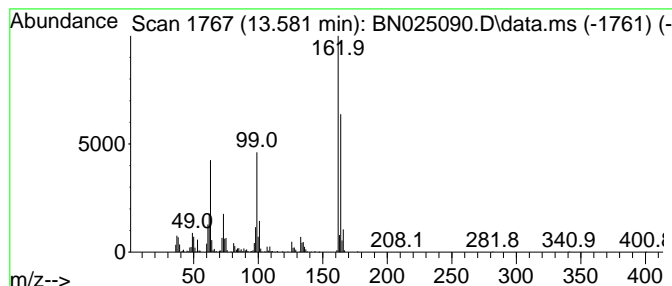
Quant Method : Z:\svoasrv\HPCHEM1\BNA_N\Methods\SFAM-EPA-BN041023.M
 Quant Title : SVOA CALIBRATION

TIC Library : C:\Database\NIST20.L
 TIC Integration Parameters: LSCINT.P

 Peak Number 8 Phenol, 3,4-dichloro- Concentration Rank 9

R.T.	EstConc	Area	Relative to ISTD	R.T.
13.581	2.52 ng/ul	545859	Acenaphthene-d10	14.563

Hit#	of	5	Tentative ID	MW	MolForm	CAS#	Qual
1			Phenol, 3,4-dichloro-	162	C6H4Cl2O	000095-77-2	97
2			Phenol, 3,5-dichloro-	162	C6H4Cl2O	000591-35-5	97
3			Phenol, 3,5-dichloro-	162	C6H4Cl2O	000591-35-5	97
4			Phenol, 3,4-dichloro-	162	C6H4Cl2O	000095-77-2	97
5			Phenol, 3,4-dichloro-	162	C6H4Cl2O	000095-77-2	97



Data Path : Z:\svoasrv\HPCHEM1\BNA_N\Data\BN042223\
 Data File : BN025090.D
 Acq On : 23 Apr 2023 00:04
 Operator : CG/JU
 Sample : 02399-18
 Misc :
 ALS Vial : 22 Sample Multiplier: 1

Instrument :
 BNA_N
 ClientSampleId :
 COMN6

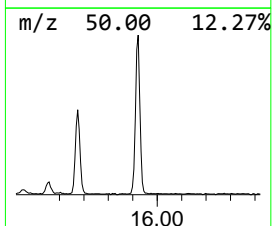
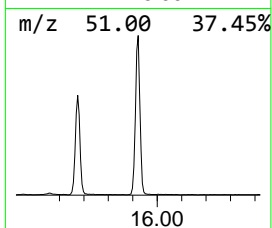
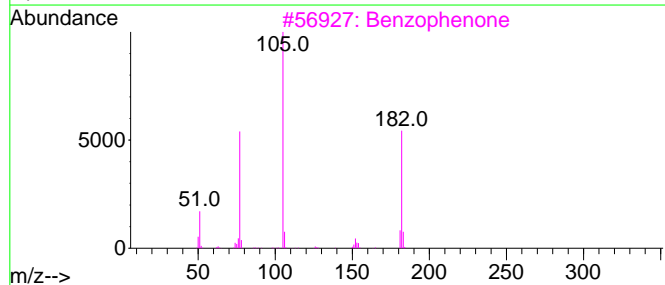
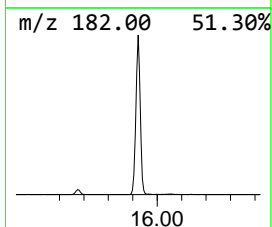
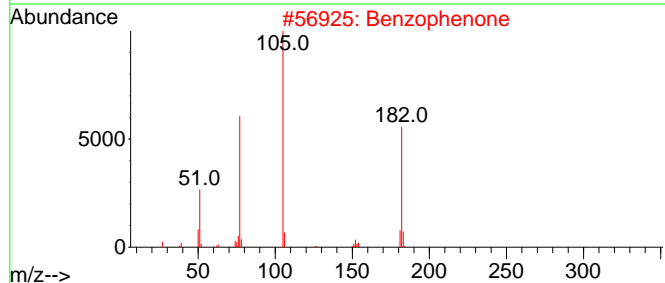
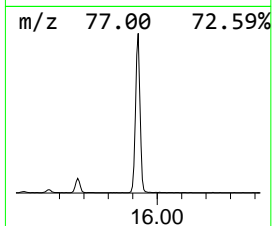
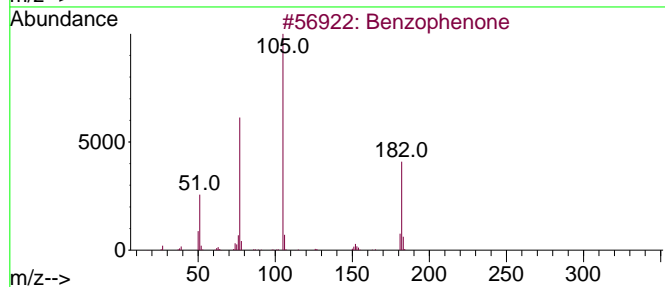
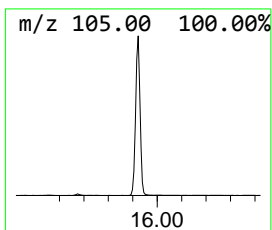
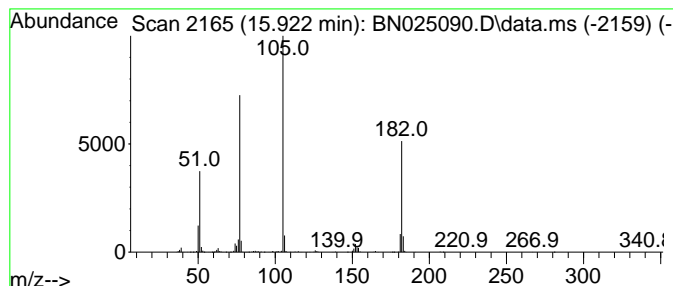
Quant Method : Z:\svoasrv\HPCHEM1\BNA_N\Methods\SFAM-EPA-BN041023.M
 Quant Title : SVOA CALIBRATION

TIC Library : C:\Database\NIST20.L
 TIC Integration Parameters: LSCINT.P

 Peak Number 9 Benzophenone Concentration Rank 5

R.T.	EstConc	Area	Relative to ISTD	R.T.
15.922	7.36 ng/ul	1597550	Acenaphthene-d10	14.563

Hit#	of	Tentative ID	MW	MolForm	CAS#	Qual
1	5	Benzophenone	182	C13H10O	000119-61-9	97
2		Benzophenone	182	C13H10O	000119-61-9	97
3		Benzophenone	182	C13H10O	000119-61-9	97
4		Benzophenone	182	C13H10O	000119-61-9	91
5		Benzophenone	182	C13H10O	000119-61-9	91



Data Path : Z:\svoasrv\HPCHEM1\BNA_N\Data\BN042223\
 Data File : BN025090.D
 Acq On : 23 Apr 2023 00:04
 Operator : CG/JU
 Sample : 02399-18
 Misc :
 ALS Vial : 22 Sample Multiplier: 1

Instrument :
 BNA_N
 ClientSampleId :
 COMN6

Quant Method : Z:\svoasrv\HPCHEM1\BNA_N\Methods\SFAM-EPA-BN041023.M
 Quant Title : SVOA CALIBRATION

TIC Library : C:\Database\NIST20.L
 TIC Integration Parameters: LSCINT.P

TIC Top Hit name	RT	EstConc	Units	Response	--Internal Standard--			
					#	RT	Resp	Conc
Benzene, chloro-	5.211	33.9	ng/ul	62460700	1	7.922	36846700	20.0
Benzene, 1,4-di...	7.805	5.8	ng/ul	10703000	1	7.922	36846700	20.0
Benzene, 1,2-di...	8.316	76.5	ng/ul	140910000	1	7.922	36846700	20.0
Benzene, 1-brom...	9.422	4.6	ng/ul	759025	2	10.740	3277980	20.0
Benzene, 1,2,4-...	10.616	500.9	ng/ul	82089300	2	10.740	3277980	20.0
Benzene, 1,2,3-...	11.122	107.1	ng/ul	17559100	2	10.740	3277980	20.0
Benzene, 1,2,3,...	13.363	5.7	ng/ul	1239550	3	14.563	4340190	20.0
Phenol, 3,4-dic...	13.581	2.5	ng/ul	545859	3	14.563	4340190	20.0
Benzophenone	15.922	7.4	ng/ul	1597550	3	14.563	4340190	20.0