

Data Path : Z:\svoasrv\HPCHEM1\BNA_N\Data\BN042223\
 Data File : BN025095.D
 Acq On : 23 Apr 2023 03:03
 Operator : CG/JU
 Sample : 02399-15
 Misc :
 ALS Vial : 27 Sample Multiplier: 1

Instrument :
 BNA_N
 ClientSampleId :
 COMP3

Integration Parameters: LSCINT.P

Integrator: RTE
 Smoothing : OFF Filtering: 5
 Sampling : 1 Min Area: 0.1 % of largest Peak
 Start Thrs: 0.2 Max Peaks: 100
 Stop Thrs : 0 Peak Location: TOP

If leading or trailing edge < 100 prefer < Baseline drop else tangent >
 Peak separation: 5

Method : Z:\svoasrv\HPCHEM1\BNA_N\Methods\SFAM-EPA-BN041023.M
 Title : SVOA CALIBRATION

Signal : TIC: BN025095.D\data.ms

peak #	R.T. min	first scan	max scan	last scan	PK TY	peak height	corr. area	corr. % max.	% of total
1	3.299	15	19	32	rVB	104349	248877	0.10%	0.031%
2	3.734	90	93	110	rBV	411546	933995	0.38%	0.116%
3	4.058	143	148	163	rBV	194992	396830	0.16%	0.049%
4	5.216	335	345	347	rBV2	45018709	95631546	39.08%	11.854%
5	5.387	373	374	377	rVB	50519860	23769906	9.71%	2.946%
6	6.599	572	580	588	rBV	746728	1283075	0.52%	0.159%
7	6.881	613	628	644	rBV	1338298	2564160	1.05%	0.318%
8	7.111	656	667	682	rVB2	687598	1820294	0.74%	0.226%
9	7.281	683	696	713	rBV2	6998466	22980039	9.39%	2.848%
10	7.487	719	731	747	rVB2	1493766	5533447	2.26%	0.686%
11	7.663	752	761	773	rVB3	157438	593177	0.24%	0.074%
12	7.828	779	789	806	rBV2	18993542	97064743	39.67%	12.032%
13	8.375	863	882	884	rBV4	52458413	244694407	100.00%	30.331%
14	8.646	922	928	942	rVB	1156645	1932437	0.79%	0.240%
15	9.105	999	1006	1010	rBV	2021015	3378142	1.38%	0.419%
16	9.146	1010	1013	1023	rVB	858795	1253366	0.51%	0.155%
17	9.434	1055	1062	1069	rBV	795270	1294220	0.53%	0.160%
18	9.769	1110	1119	1124	rBV	6206569	10952180	4.48%	1.358%
19	9.822	1124	1128	1141	rVB	1696106	2672287	1.09%	0.331%
20	10.357	1212	1219	1225	rBV	1993423	3501434	1.43%	0.434%
21	10.422	1225	1230	1238	rVB	1531444	2612524	1.07%	0.324%
22	10.522	1238	1247	1253	rBV	2806961	5162080	2.11%	0.640%
23	10.622	1253	1264	1278	rVV	38586864	85484227	34.94%	10.596%
24	10.740	1278	1284	1294	rVB	1773751	2873482	1.17%	0.356%
25	10.881	1295	1308	1327	rBV	27119739	67995822	27.79%	8.428%
26	11.134	1342	1351	1357	rVV	13587997	23580767	9.64%	2.923%
27	11.340	1379	1386	1394	rBV	2676340	4301259	1.76%	0.533%
28	11.557	1412	1423	1430	rVB	516341	949612	0.39%	0.118%
29	11.640	1430	1437	1442	rBV	149369	268496	0.11%	0.033%
30	12.498	1572	1583	1591	rBV3	102391	270495	0.11%	0.034%
31	12.769	1621	1629	1638	rVB2	1736541	2971992	1.21%	0.368%
32	13.004	1662	1669	1676	rVV2	823097	1480947	0.61%	0.184%
33	13.204	1698	1703	1709	rVB	270578	417605	0.17%	0.052%
34	13.363	1724	1730	1734	rBV	535456	870380	0.36%	0.108%
35	13.398	1734	1736	1740	rVV	224178	254820	0.10%	0.032%
36	13.463	1740	1747	1754	rVB4	134988	259338	0.11%	0.032%

Data Path : Z:\svoasrv\HPCHEM1\BNA_N\Data\BN042223\
 Data File : BN025095.D
 Acq On : 23 Apr 2023 03:03
 Operator : CG/JU
 Sample : 02399-15
 Misc :
 ALS Vial : 27 Sample Multiplier: 1

Instrument :
 BNA_N
 ClientSampleId :
 COMP3

Integration Parameters: LSCINT.P

Integrator: RTE
 Smoothing : OFF Filtering: 5
 Sampling : 1 Min Area: 0.1 % of largest Peak
 Start Thrs: 0.2 Max Peaks: 100
 Stop Thrs : 0 Peak Location: TOP

If leading or trailing edge < 100 prefer < Baseline drop else tangent >
 Peak separation: 5

Method : Z:\svoasrv\HPCHEM1\BNA_N\Methods\SFAM-EPA-BN041023.M
 Title : SVOA CALIBRATION

37	13.575	1761	1766	1773	rBV	1914961	2821439	1.15%	0.350%
38	13.910	1817	1823	1827	rBV	289900	431261	0.18%	0.053%
39	13.975	1827	1834	1847	rVB	4083006	5655795	2.31%	0.701%
40	14.257	1876	1882	1892	rVB	4401724	6312048	2.58%	0.782%
41	14.563	1927	1934	1939	rBV	2564329	3767939	1.54%	0.467%
42	14.757	1962	1967	1979	rVB	430467	684699	0.28%	0.085%
43	14.857	1979	1984	1992	rVB	179391	290016	0.12%	0.036%
44	15.045	2012	2016	2023	rBV	241283	389598	0.16%	0.048%
45	15.557	2096	2103	2115	rVB	5719796	8114372	3.32%	1.006%
46	15.675	2115	2123	2132	rBV	2300005	3044903	1.24%	0.377%
47	16.534	2261	2269	2277	rBV	346710	525005	0.21%	0.065%
48	16.869	2322	2326	2335	rVB4	145679	245772	0.10%	0.030%
49	17.310	2394	2401	2411	rBV	3194838	4513043	1.84%	0.559%
50	17.410	2411	2418	2429	rVV2	6534250	9131799	3.73%	1.132%
51	18.686	2625	2635	2643	rBV	2492687	3482726	1.42%	0.432%
52	19.704	2802	2808	2814	rBV	8393181	10955842	4.48%	1.358%
53	21.498	3108	3113	3119	rBV2	4324085	5385567	2.20%	0.668%
54	23.774	3491	3500	3513	rBV2	6380714	12769352	5.22%	1.583%
55	23.927	3518	3526	3539	rVB	2943676	5974705	2.44%	0.741%

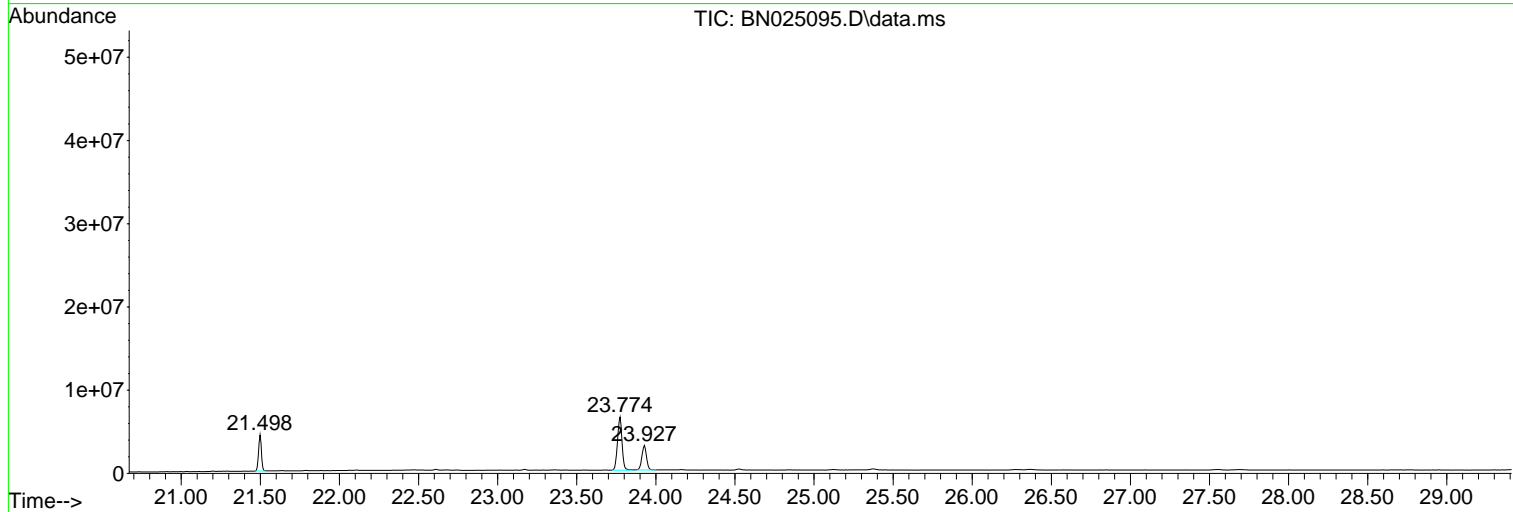
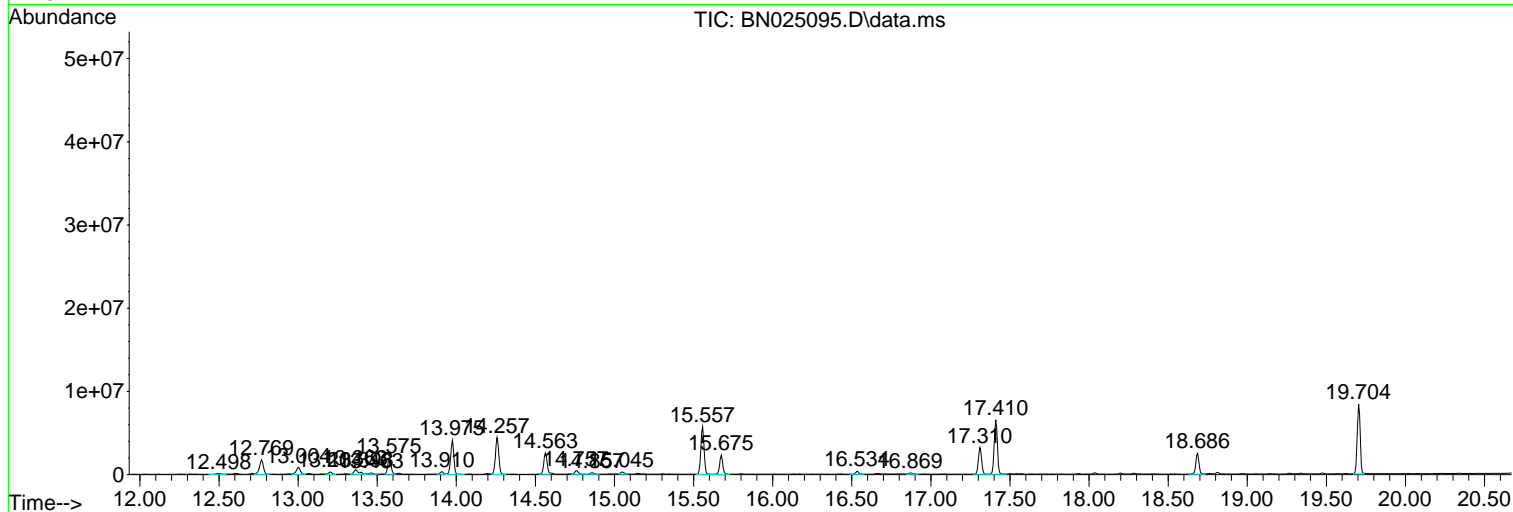
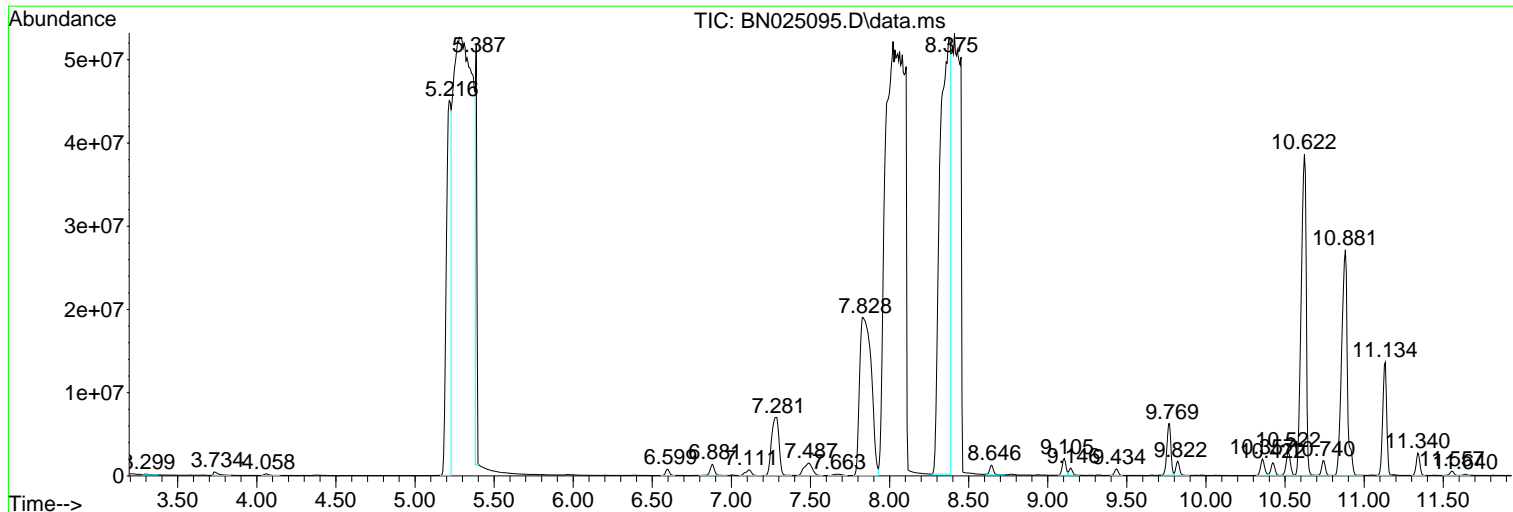
Sum of corrected areas: 806748289

Data Path : Z:\svoasrv\HPCHEM1\BNA_N\Data\BN042223\
 Data File : BN025095.D
 Acq On : 23 Apr 2023 03:03
 Operator : CG/JU
 Sample : 02399-15
 Misc :
 ALS Vial : 27 Sample Multiplier: 1

Instrument :
 BNA_N
 ClientSampleId :
 COMP3

Quant Method : Z:\svoasrv\HPCHEM1\BNA_N\Methods\SFAM-EPA-BN041023.M
 Quant Title : SVOA CALIBRATION

TIC Library : C:\Database\NIST20.L
 TIC Integration Parameters: LSCINT.P



Data Path : Z:\svoasrv\HPCHEM1\BNA_N\Data\BN042223\
 Data File : BN025095.D
 Acq On : 23 Apr 2023 03:03
 Operator : CG/JU
 Sample : 02399-15
 Misc :
 ALS Vial : 27 Sample Multiplier: 1

Instrument :
 BNA_N
 ClientSampleId :
 COMP3

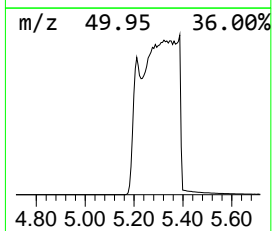
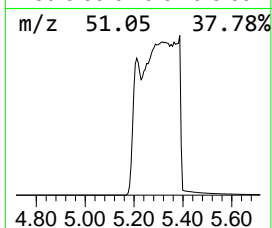
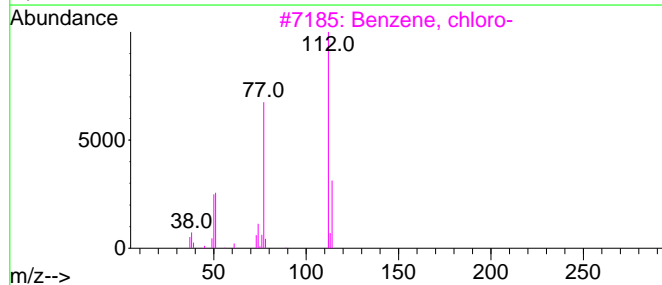
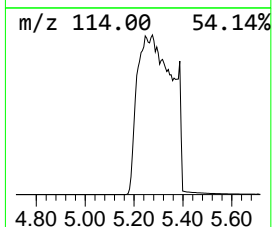
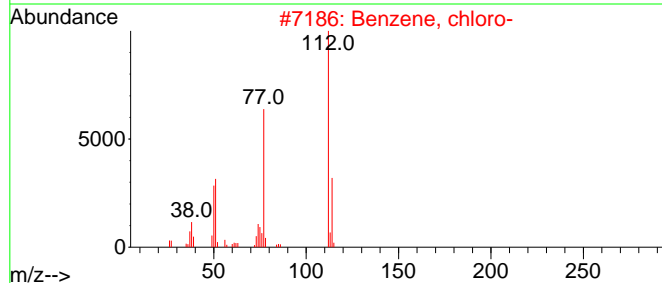
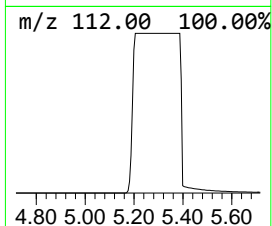
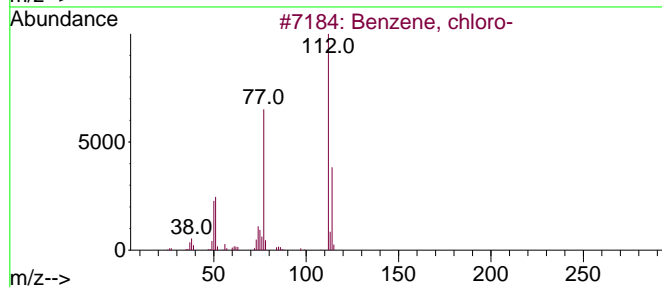
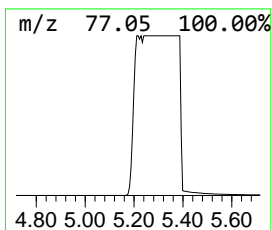
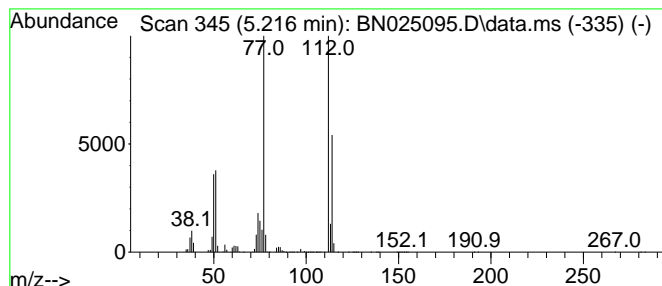
Quant Method : Z:\svoasrv\HPCHEM1\BNA_N\Methods\SFAM-EPA-BN041023.M
 Quant Title : SVOA CALIBRATION

TIC Library : C:\Database\NIST20.L
 TIC Integration Parameters: LSCINT.P

 Peak Number 1 Benzene, chloro- Concentration Rank 8

R.T.	EstConc	Area	Relative to ISTD	R.T.
5.216	19.70 ng/ul	95631500	1,4-Dichlorobenzene-d4	7.952

Hit#	of	5	Tentative ID	MW	MolForm	CAS#	Qual
1			Benzene, chloro-	112	C6H5Cl	000108-90-7	97
2			Benzene, chloro-	112	C6H5Cl	000108-90-7	94
3			Benzene, chloro-	112	C6H5Cl	000108-90-7	93
4			Benzene, chloro-	112	C6H5Cl	000108-90-7	90
5			Benzene, chloro-	112	C6H5Cl	000108-90-7	90



Data Path : Z:\svoasrv\HPCHEM1\BNA_N\Data\BN042223\
 Data File : BN025095.D
 Acq On : 23 Apr 2023 03:03
 Operator : CG/JU
 Sample : 02399-15
 Misc :
 ALS Vial : 27 Sample Multiplier: 1

Instrument :
 BNA_N
 ClientSampleId :
 COMP3

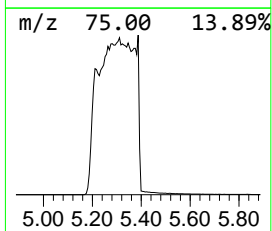
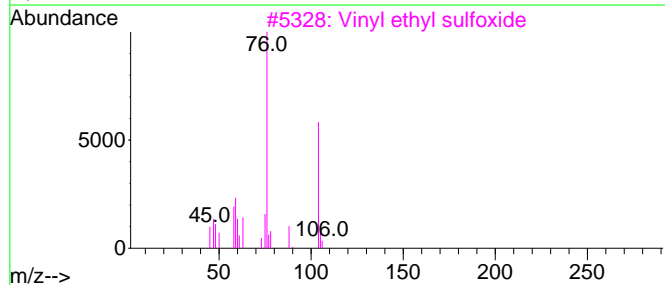
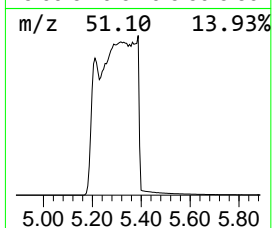
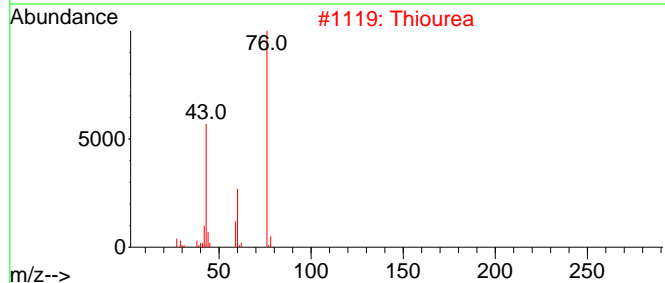
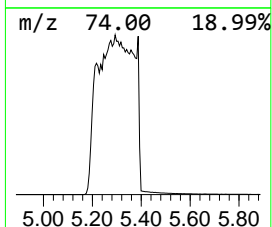
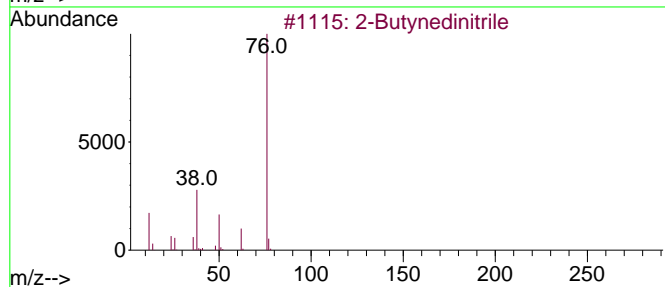
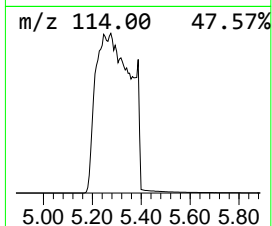
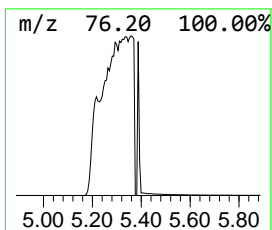
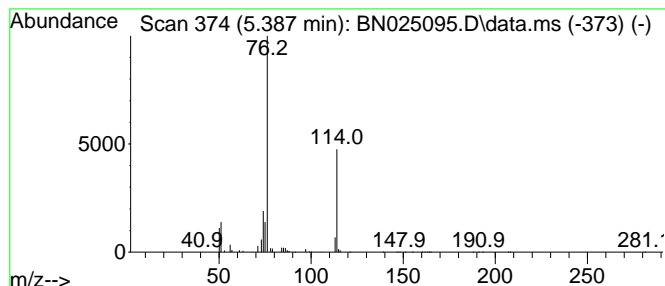
Quant Method : Z:\svoasrv\HPCHEM1\BNA_N\Methods\SFAM-EPA-BN041023.M
 Quant Title : SVOA CALIBRATION

TIC Library : C:\Database\NIST20.L
 TIC Integration Parameters: LSCINT.P

 Peak Number 2 unknown-01 Concentration Rank 15

R.T.	EstConc	Area	Relative to ISTD	R.T.
5.387	4.90 ng/ul	23769900	1,4-Dichlorobenzene-d4	7.952

Hit#	of	Tentative ID	MW	MolForm	CAS#	Qual
1	2-Butynedinitrile	76	C4N2	001071-98-3	7	
2	Thiourea	76	CH4N2S	000062-56-6	4	
3	Vinyl ethyl sulfoxide	104	C4H8OS	032568-51-7	4	
4	1,2,4-Trioxolane	76	C2H4O3	000289-14-5	3	
5	Carbon disulfide	76	CS2	000075-15-0	3	



Data Path : Z:\svoasrv\HPCHEM1\BNA_N\Data\BN042223\
 Data File : BN025095.D
 Acq On : 23 Apr 2023 03:03
 Operator : CG/JU
 Sample : 02399-15
 Misc :
 ALS Vial : 27 Sample Multiplier: 1

Instrument :
 BNA_N
 ClientSampleId :
 COMP3

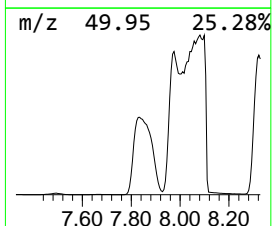
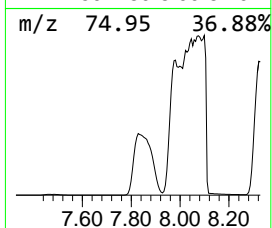
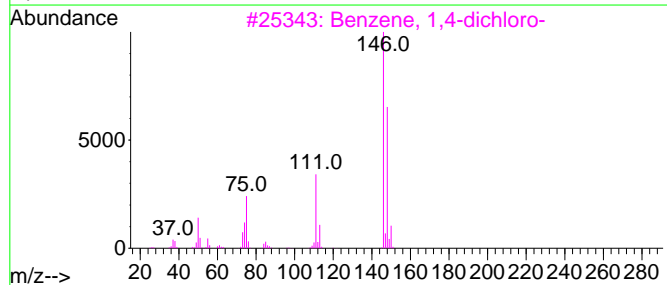
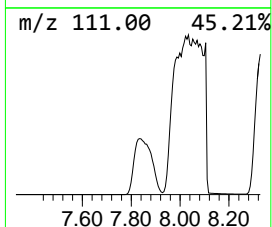
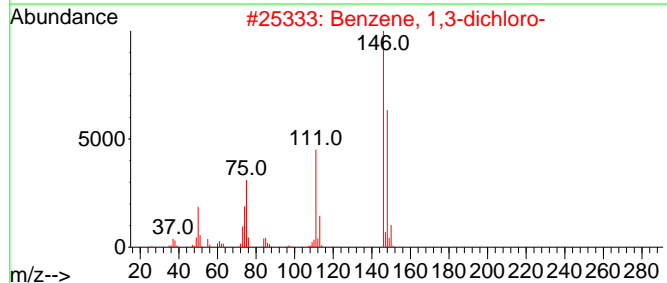
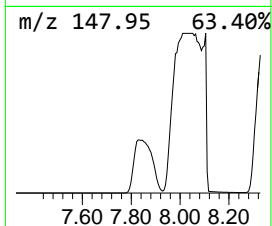
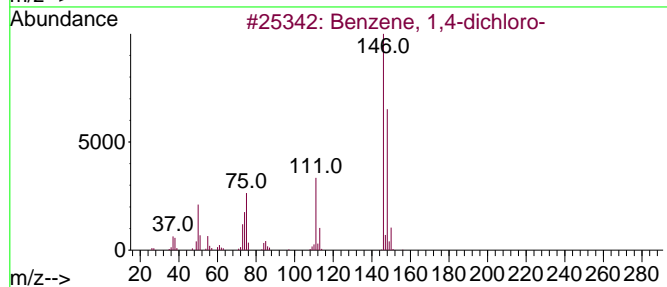
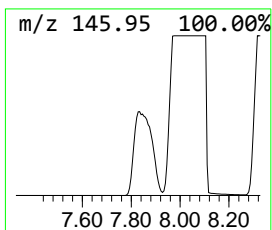
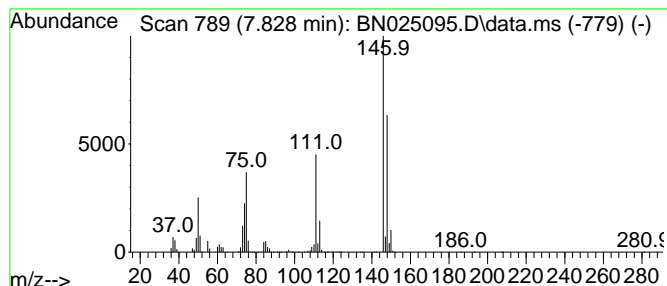
Quant Method : Z:\svoasrv\HPCHEM1\BNA_N\Methods\SFAM-EPA-BN041023.M
 Quant Title : SVOA CALIBRATION

TIC Library : C:\Database\NIST0.L
 TIC Integration Parameters: LSCINT.P

 Peak Number 3 Benzene, 1,4-dichloro- Concentration Rank 7

R.T.	EstConc	Area	Relative to ISTD	R.T.
7.828	20.00 ng/ul	97064700	1,4-Dichlorobenzene-d4	7.952

Hit#	of	5	Tentative ID	MW	MolForm	CAS#	Qual
1			Benzene, 1,4-dichloro-	146	C6H4Cl2	000106-46-7	98
2			Benzene, 1,3-dichloro-	146	C6H4Cl2	000541-73-1	98
3			Benzene, 1,4-dichloro-	146	C6H4Cl2	000106-46-7	97
4			Benzene, 1,3-dichloro-	146	C6H4Cl2	000541-73-1	97
5			Benzene, 1,3-dichloro-	146	C6H4Cl2	000541-73-1	97



Data Path : Z:\svoasrv\HPCHEM1\BNA_N\Data\BN042223\
 Data File : BN025095.D
 Acq On : 23 Apr 2023 03:03
 Operator : CG/JU
 Sample : 02399-15
 Misc :
 ALS Vial : 27 Sample Multiplier: 1

Instrument :
 BNA_N
 ClientSampleId :
 COMP3

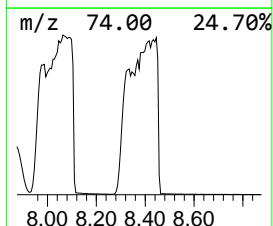
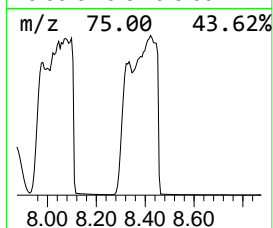
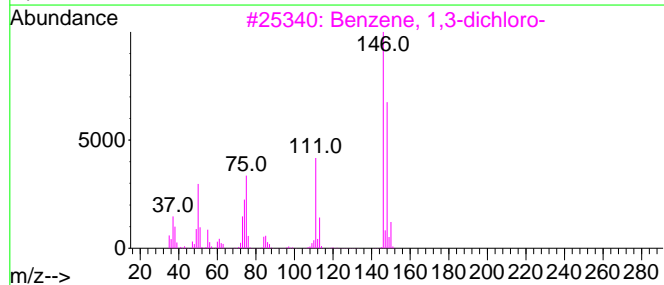
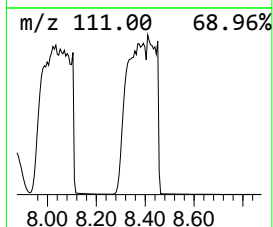
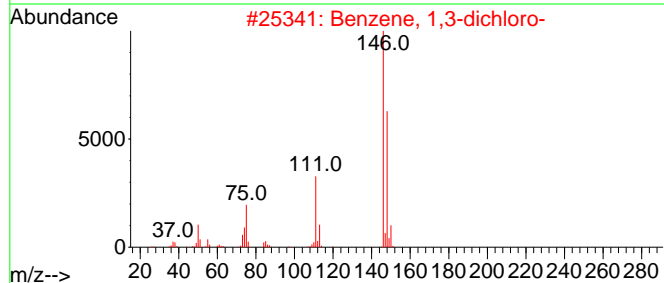
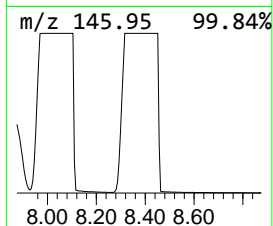
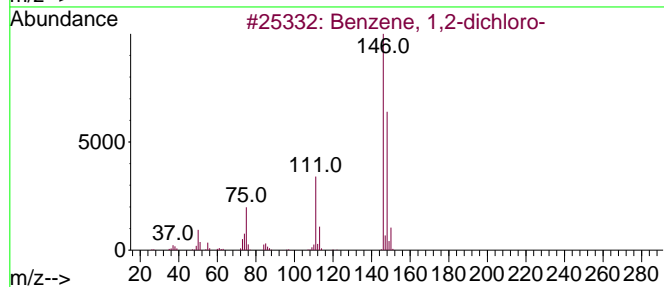
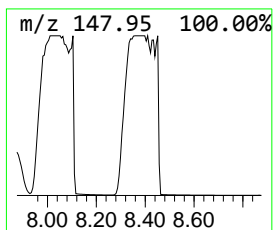
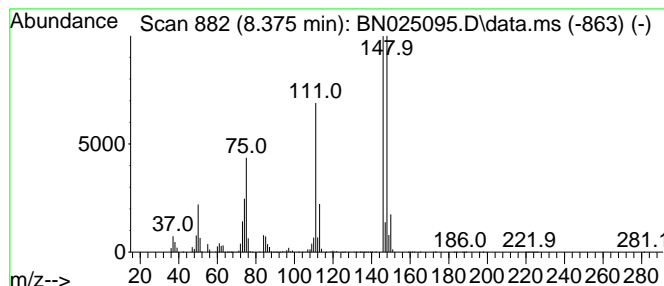
Quant Method : Z:\svoasrv\HPCHEM1\BNA_N\Methods\SFAM-EPA-BN041023.M
 Quant Title : SVOA CALIBRATION

TIC Library : C:\Database\NIST20.L
 TIC Integration Parameters: LSCINT.P

 Peak Number 4 Benzene, 1,2-dichloro- Concentration Rank 4

R.T.	EstConc	Area	Relative to ISTD	R.T.
8.375	50.42 ng/ul	244694000	1,4-Dichlorobenzene-d4	7.952

Hit#	of	5	Tentative ID	MW	MolForm	CAS#	Qual
1			Benzene, 1,2-dichloro-	146	C6H4Cl2	000095-50-1	93
2			Benzene, 1,3-dichloro-	146	C6H4Cl2	000541-73-1	93
3			Benzene, 1,3-dichloro-	146	C6H4Cl2	000541-73-1	93
4			Benzene, 1,4-dichloro-	146	C6H4Cl2	000106-46-7	91
5			Benzene, 1,3-dichloro-	146	C6H4Cl2	000541-73-1	91



Data Path : Z:\svoasrv\HPCHEM1\BNA_N\Data\BN042223\
 Data File : BN025095.D
 Acq On : 23 Apr 2023 03:03
 Operator : CG/JU
 Sample : 02399-15
 Misc :
 ALS Vial : 27 Sample Multiplier: 1

Instrument :
 BNA_N
 ClientSampleId :
 COMP3

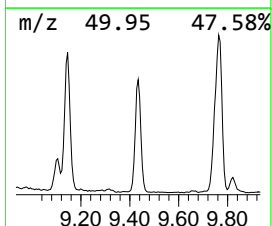
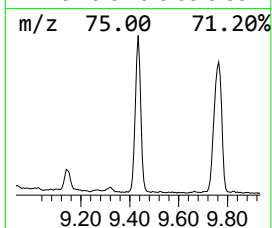
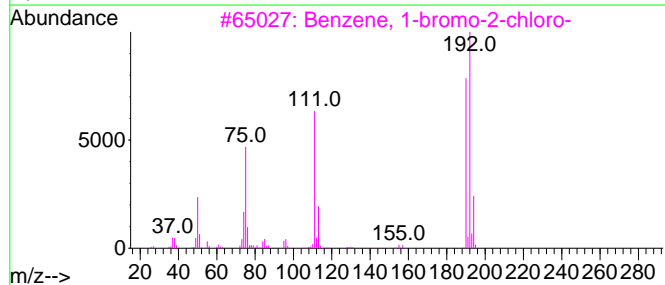
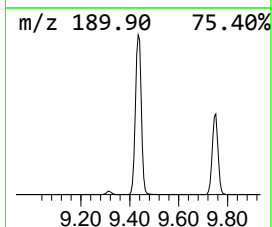
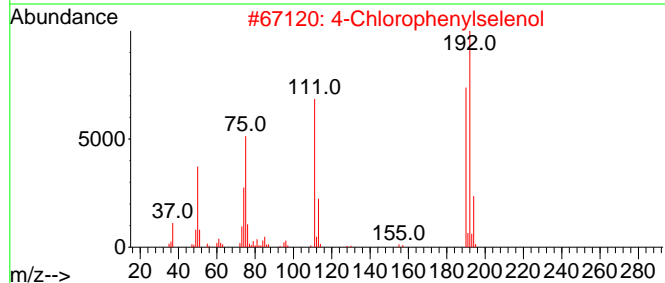
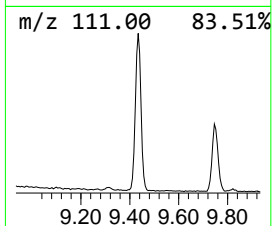
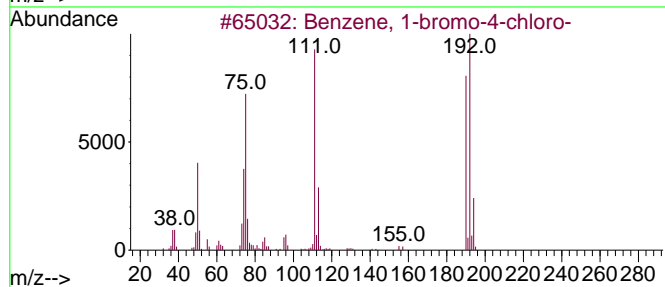
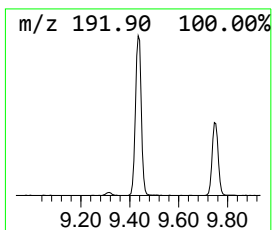
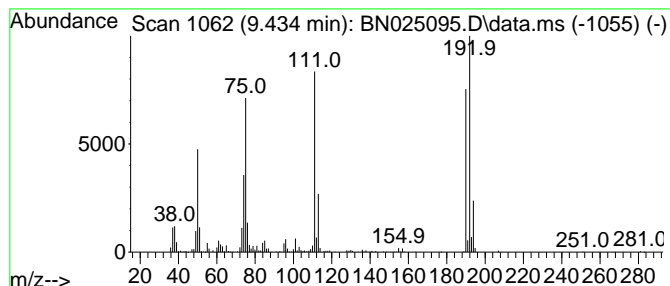
Quant Method : Z:\svoasrv\HPCHEM1\BNA_N\Methods\SFAM-EPA-BN041023.M
 Quant Title : SVOA CALIBRATION

TIC Library : C:\Database\NIST20.L
 TIC Integration Parameters: LSCINT.P

 Peak Number 5 Benzene, 1-bromo-4-chloro- Concentration Rank 12

R.T.	EstConc	Area	Relative to ISTD	R.T.
9.434	9.01 ng/ul	1294220	Naphthalene-d8	10.740

Hit#	of	5	Tentative ID	MW	MolForm	CAS#	Qual
1			Benzene, 1-bromo-4-chloro-	190	C6H4BrCl	000106-39-8	99
2			4-Chlorophenylselenol	192	C6H5ClSe	016645-10-6	98
3			Benzene, 1-bromo-2-chloro-	190	C6H4BrCl	000694-80-4	98
4			Benzene, 1-bromo-4-chloro-	190	C6H4BrCl	000106-39-8	98
5			Benzene, 1-bromo-3-chloro-	190	C6H4BrCl	000108-37-2	97



Data Path : Z:\svoasrv\HPCHEM1\BNA_N\Data\BN042223\
 Data File : BN025095.D
 Acq On : 23 Apr 2023 03:03
 Operator : CG/JU
 Sample : 02399-15
 Misc :
 ALS Vial : 27 Sample Multiplier: 1

Instrument :
 BNA_N
 ClientSampleId :
 COMP3

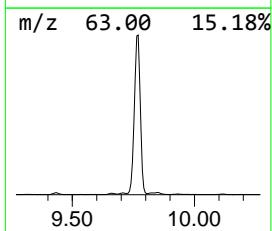
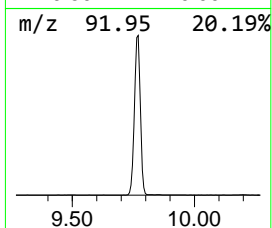
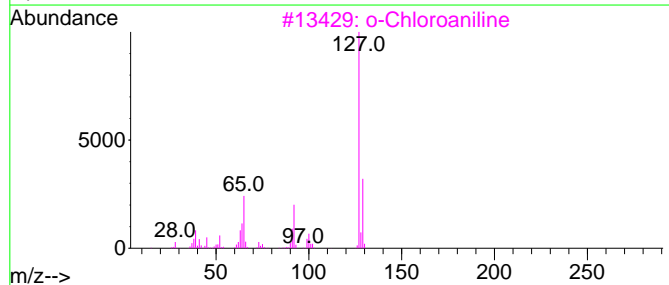
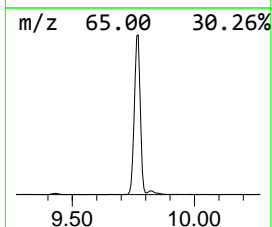
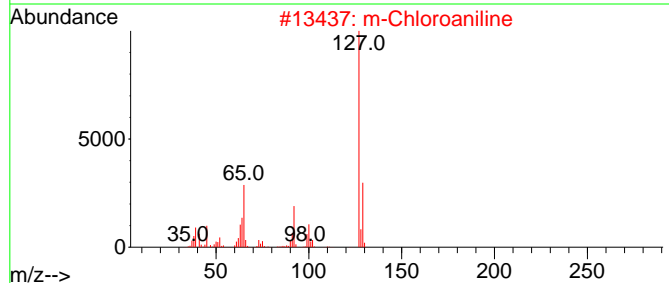
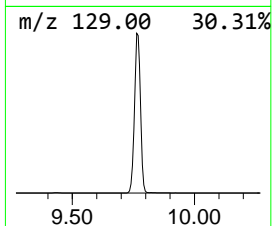
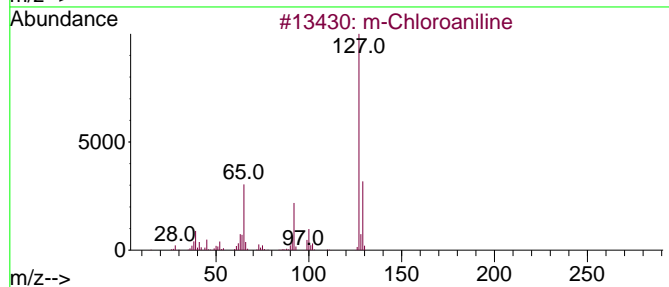
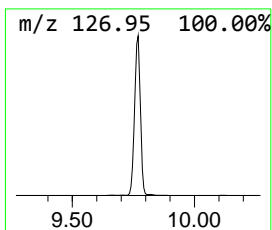
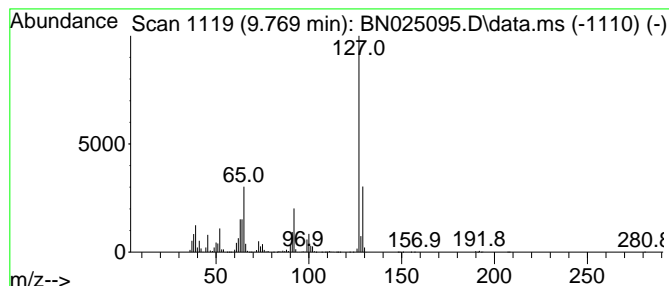
Quant Method : Z:\svoasrv\HPCHEM1\BNA_N\Methods\SFAM-EPA-BN041023.M
 Quant Title : SVOA CALIBRATION

TIC Library : C:\Database\NIST20.L
 TIC Integration Parameters: LSCINT.P

 Peak Number 6 m-Chloroaniline Concentration Rank 3

R.T.	EstConc	Area	Relative to ISTD	R.T.
9.769	76.23 ng/ul	10952200	Naphthalene-d8	10.740

Hit#	of 5	Tentative ID	MW	MolForm	CAS#	Qual
1		m-Chloroaniline	127	C6H6ClN	000108-42-9	97
2		m-Chloroaniline	127	C6H6ClN	000108-42-9	96
3		o-Chloroaniline	127	C6H6ClN	000095-51-2	96
4		o-Chloroaniline	127	C6H6ClN	000095-51-2	95
5		p-Chloroaniline	127	C6H6ClN	000106-47-8	95



Data Path : Z:\svoasrv\HPCHEM1\BNA_N\Data\BN042223\
 Data File : BN025095.D
 Acq On : 23 Apr 2023 03:03
 Operator : CG/JU
 Sample : 02399-15
 Misc :
 ALS Vial : 27 Sample Multiplier: 1

Instrument :
 BNA_N
 ClientSampleId :
 COMP3

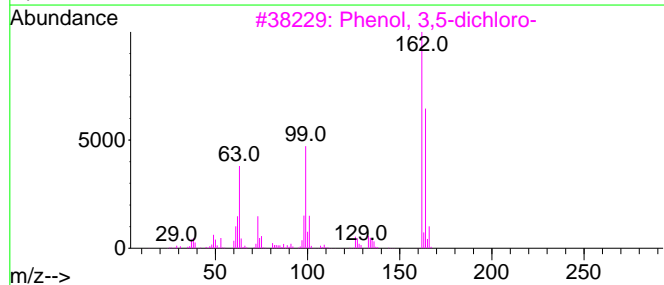
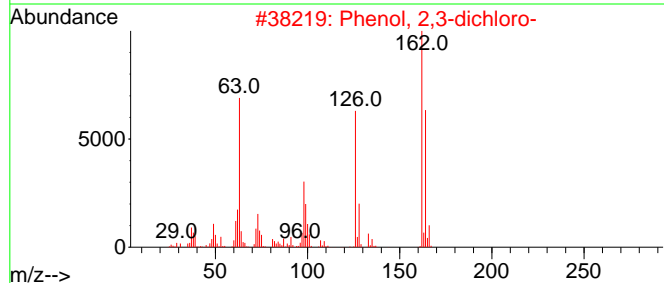
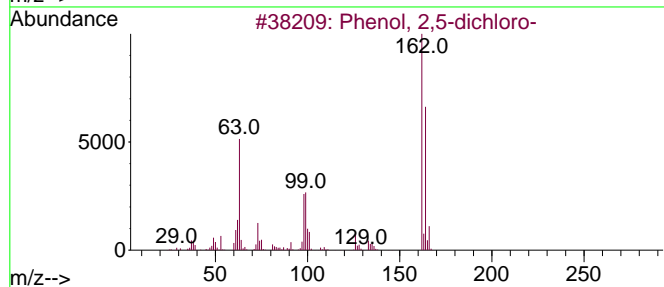
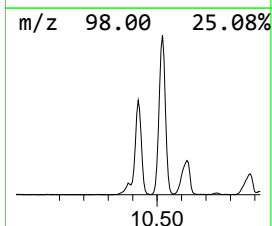
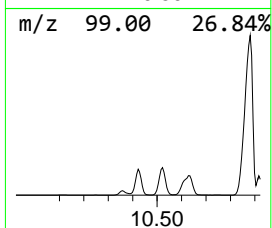
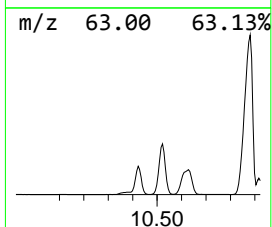
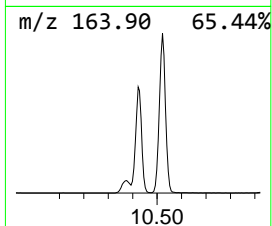
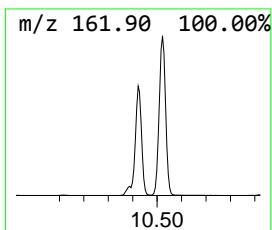
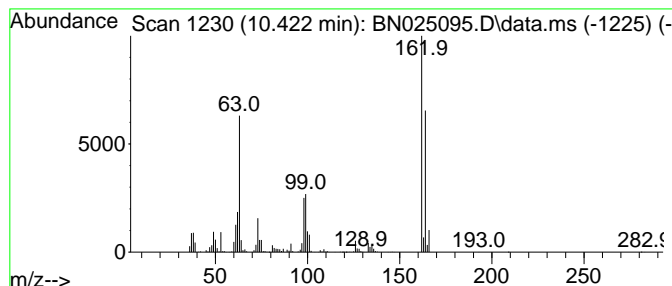
Quant Method : Z:\svoasrv\HPCHEM1\BNA_N\Methods\SFAM-EPA-BN041023.M
 Quant Title : SVOA CALIBRATION

TIC Library : C:\Database\NIST20.L
 TIC Integration Parameters: LSCINT.P

 Peak Number 7 Phenol, 2,5-dichloro- Concentration Rank 9

R.T.	EstConc	Area	Relative to ISTD	R.T.
10.422	18.18 ng/ul	2612520	Naphthalene-d8	10.740

Hit#	of	5	Tentative ID	MW	MolForm	CAS#	Qual
1			Phenol, 2,5-dichloro-	162	C6H4Cl2O	000583-78-8	97
2			Phenol, 2,3-dichloro-	162	C6H4Cl2O	000576-24-9	97
3			Phenol, 3,5-dichloro-	162	C6H4Cl2O	000591-35-5	96
4			Phenol, 2,3-dichloro-	162	C6H4Cl2O	000576-24-9	94
5			Phenol, 2,6-dichloro-	162	C6H4Cl2O	000087-65-0	94



Data Path : Z:\svoasrv\HPCHEM1\BNA_N\Data\BN042223\
 Data File : BN025095.D
 Acq On : 23 Apr 2023 03:03
 Operator : CG/JU
 Sample : 02399-15
 Misc :
 ALS Vial : 27 Sample Multiplier: 1

Instrument :
 BNA_N
 ClientSampleId :
 COMP3

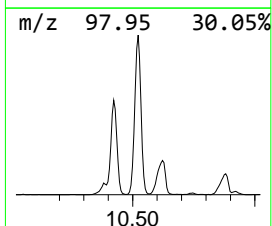
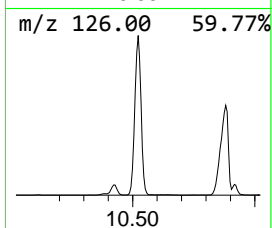
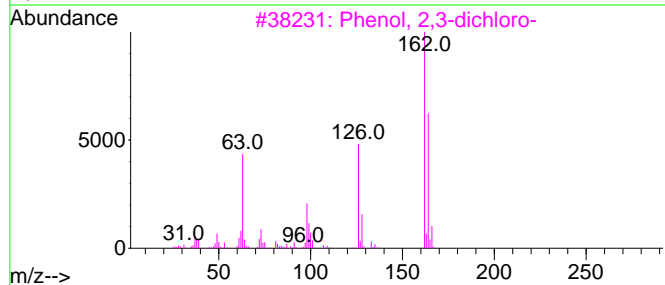
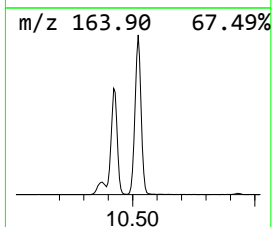
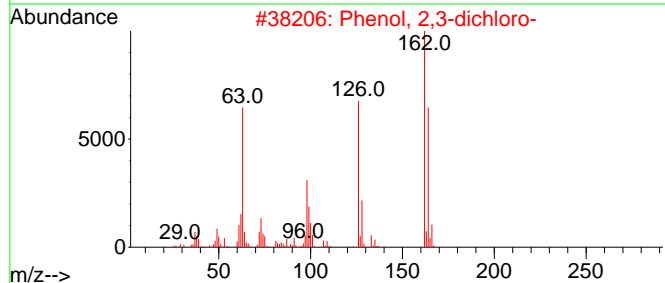
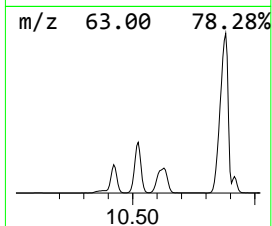
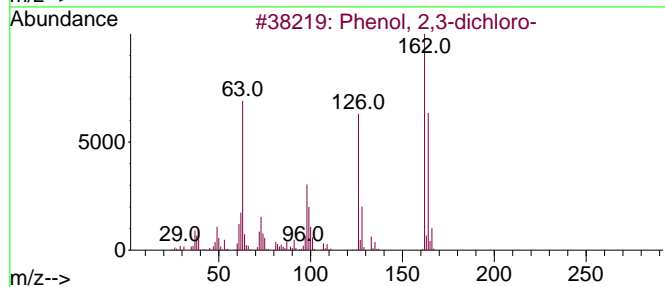
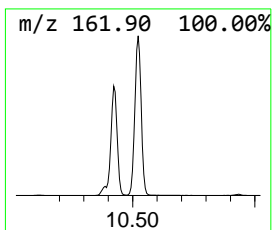
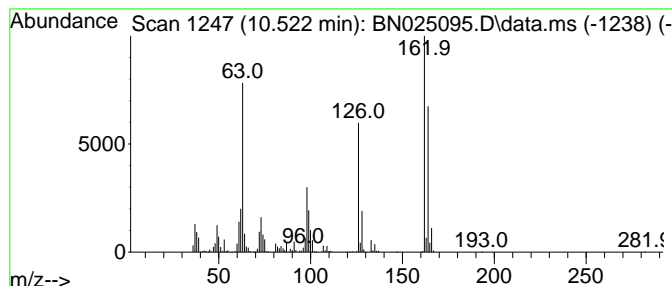
Quant Method : Z:\svoasrv\HPCHEM1\BNA_N\Methods\SFAM-EPA-BN041023.M
 Quant Title : SVOA CALIBRATION

TIC Library : C:\Database\NIST20.L
 TIC Integration Parameters: LSCINT.P

 Peak Number 8 Phenol, 2,3-dichloro- Concentration Rank 5

R.T.	EstConc	Area	Relative to ISTD	R.T.
10.522	35.93 ng/ul	5162080	Naphthalene-d8	10.740

Hit#	of	5	Tentative ID	MW	MolForm	CAS#	Qual
1			Phenol, 2,3-dichloro-	162	C6H4Cl2O	000576-24-9	99
2			Phenol, 2,3-dichloro-	162	C6H4Cl2O	000576-24-9	98
3			Phenol, 2,3-dichloro-	162	C6H4Cl2O	000576-24-9	96
4			Phenol, 2,3-dichloro-	162	C6H4Cl2O	000576-24-9	95
5			Phenol, 2,3-dichloro-	162	C6H4Cl2O	000576-24-9	95



Data Path : Z:\svoasrv\HPCHEM1\BNA_N\Data\BN042223\
 Data File : BN025095.D
 Acq On : 23 Apr 2023 03:03
 Operator : CG/JU
 Sample : 02399-15
 Misc :
 ALS Vial : 27 Sample Multiplier: 1

Instrument :
 BNA_N
 ClientSampleId :
 COMP3

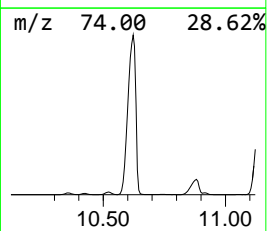
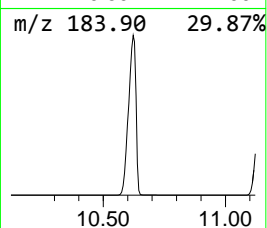
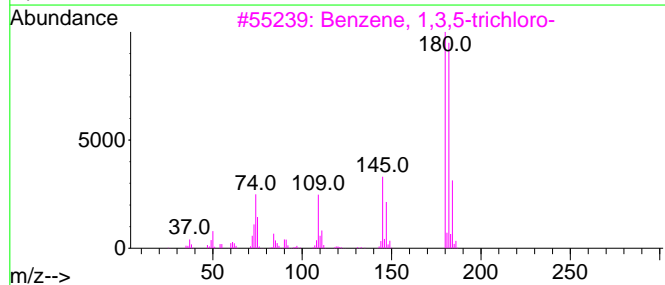
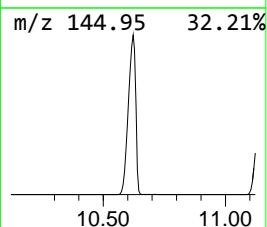
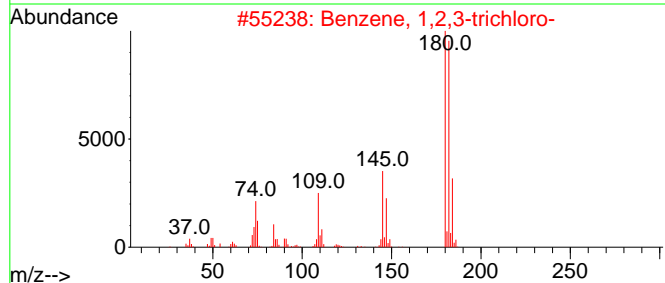
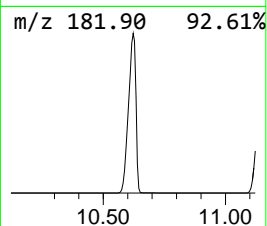
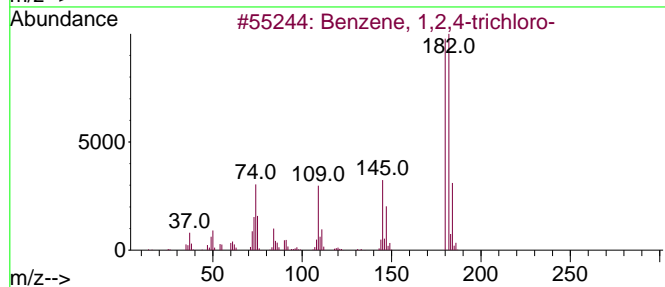
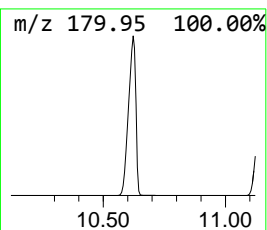
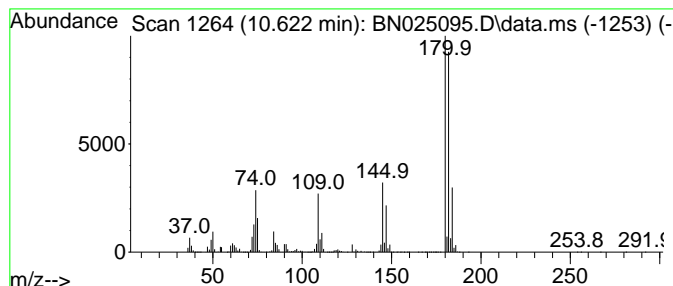
Quant Method : Z:\svoasrv\HPCHEM1\BNA_N\Methods\SFAM-EPA-BN041023.M
 Quant Title : SVOA CALIBRATION

TIC Library : C:\Database\NIST20.L
 TIC Integration Parameters: LSCINT.P

 Peak Number 9 Benzene, 1,2,4-trichloro- Concentration Rank 1

R.T.	EstConc	Area	Relative to ISTD	R.T.
10.622	594.99 ng/ul	85484200	Naphthalene-d8	10.740

Hit#	of	5	Tentative ID	MW	MolForm	CAS#	Qual
1			Benzene, 1,2,4-trichloro-	180	C6H3Cl3	000120-82-1	98
2			Benzene, 1,2,3-trichloro-	180	C6H3Cl3	000087-61-6	98
3			Benzene, 1,3,5-trichloro-	180	C6H3Cl3	000108-70-3	98
4			Benzene, 1,2,3-trichloro-	180	C6H3Cl3	000087-61-6	98
5			Benzene, 1,3,5-trichloro-	180	C6H3Cl3	000108-70-3	97



Data Path : Z:\svoasrv\HPCHEM1\BNA_N\Data\BN042223\
 Data File : BN025095.D
 Acq On : 23 Apr 2023 03:03
 Operator : CG/JU
 Sample : 02399-15
 Misc :
 ALS Vial : 27 Sample Multiplier: 1

Instrument :
 BNA_N
 ClientSampleId :
 COMP3

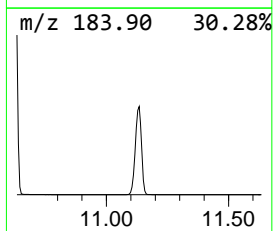
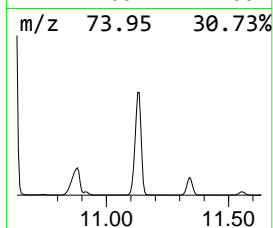
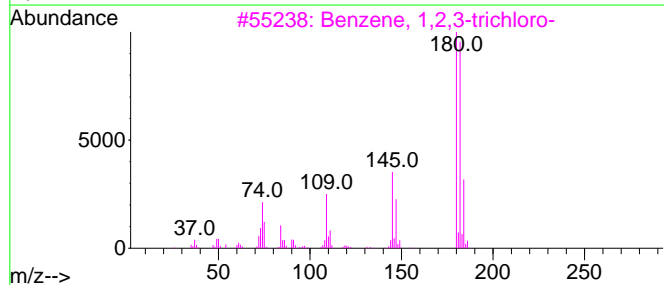
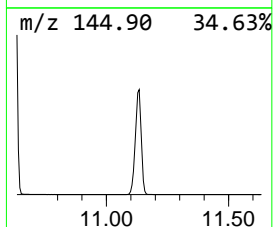
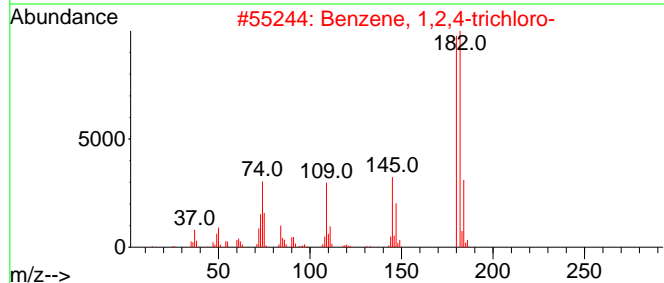
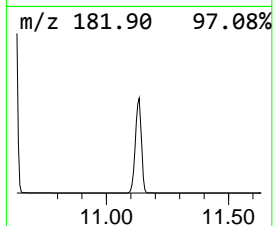
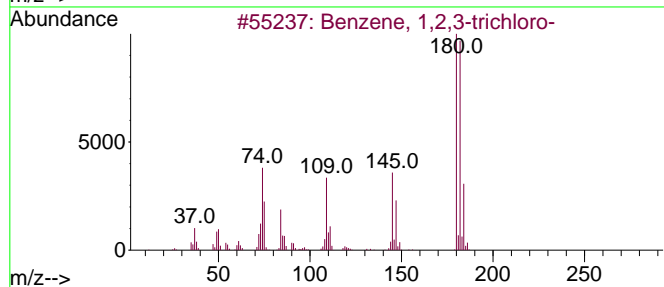
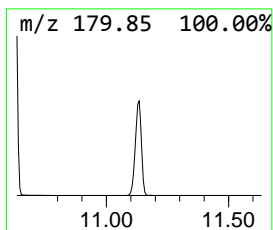
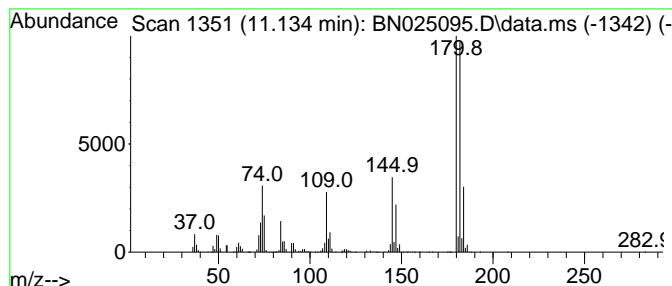
Quant Method : Z:\svoasrv\HPCHEM1\BNA_N\Methods\SFAM-EPA-BN041023.M
 Quant Title : SVOA CALIBRATION

TIC Library : C:\Database\NIST20.L
 TIC Integration Parameters: LSCINT.P

 Peak Number 10 Benzene, 1,2,3-trichloro- Concentration Rank 2

R.T.	EstConc	Area	Relative to ISTD	R.T.
11.134	164.13 ng/ul	23580800	Naphthalene-d8	10.740

Hit#	of	5	Tentative ID	MW	MolForm	CAS#	Qual
1			Benzene, 1,2,3-trichloro-	180	C6H3Cl3	000087-61-6	99
2			Benzene, 1,2,4-trichloro-	180	C6H3Cl3	000120-82-1	98
3			Benzene, 1,2,3-trichloro-	180	C6H3Cl3	000087-61-6	98
4			Benzene, 1,2,3-trichloro-	180	C6H3Cl3	000087-61-6	98
5			Benzene, 1,3,5-trichloro-	180	C6H3Cl3	000108-70-3	98



Data Path : Z:\svoasrv\HPCHEM1\BNA_N\Data\BN042223\
 Data File : BN025095.D
 Acq On : 23 Apr 2023 03:03
 Operator : CG/JU
 Sample : 02399-15
 Misc :
 ALS Vial : 27 Sample Multiplier: 1

Instrument :
 BNA_N
 ClientSampleId :
 COMP3

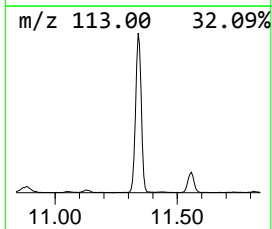
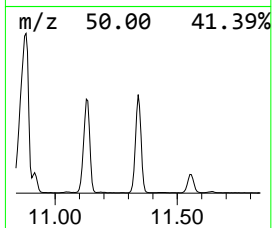
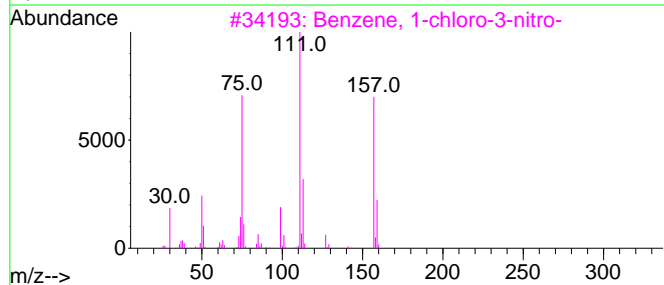
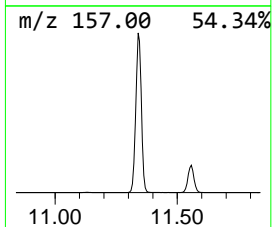
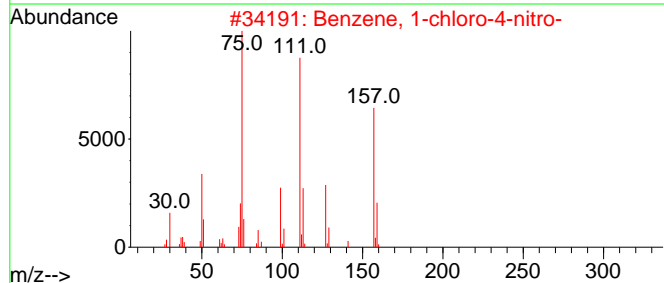
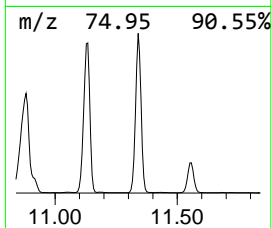
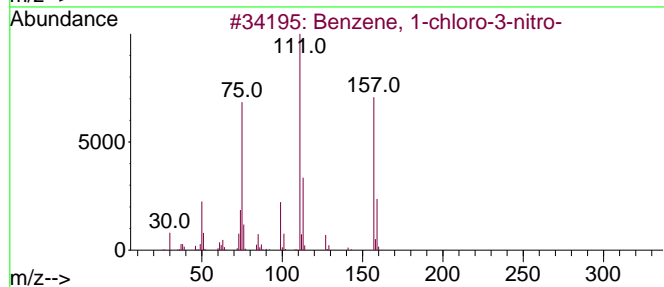
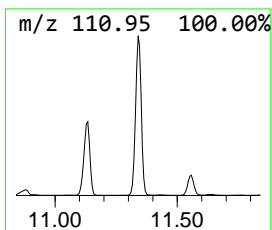
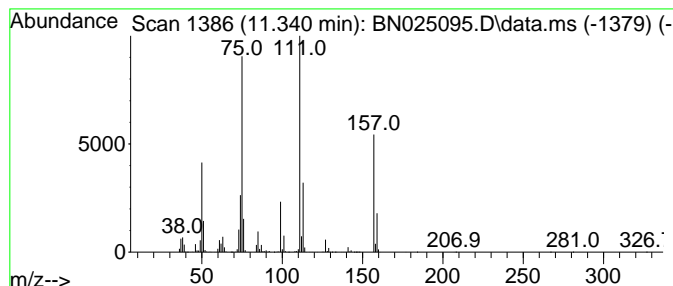
Quant Method : Z:\svoasrv\HPCHEM1\BNA_N\Methods\SFAM-EPA-BN041023.M
 Quant Title : SVOA CALIBRATION

TIC Library : C:\Database\NIST20.L
 TIC Integration Parameters: LSCINT.P

 Peak Number 11 Benzene, 1-chloro-3-nitro- Concentration Rank 6

R.T.	EstConc	Area	Relative to ISTD	R.T.
11.340	29.94 ng/ul	4301260	Naphthalene-d8	10.740

Hit#	of	5	Tentative ID	MW	MolForm	CAS#	Qual
1			Benzene, 1-chloro-3-nitro-	157	C6H4ClNO2	000121-73-3	97
2			Benzene, 1-chloro-4-nitro-	157	C6H4ClNO2	000100-00-5	94
3			Benzene, 1-chloro-3-nitro-	157	C6H4ClNO2	000121-73-3	91
4			Benzene, 1-chloro-4-nitro-	157	C6H4ClNO2	000100-00-5	91
5			Benzene, 1-chloro-4-nitro-	157	C6H4ClNO2	000100-00-5	87



Data Path : Z:\svoasrv\HPCHEM1\BNA_N\Data\BN042223\
 Data File : BN025095.D
 Acq On : 23 Apr 2023 03:03
 Operator : CG/JU
 Sample : 02399-15
 Misc :
 ALS Vial : 27 Sample Multiplier: 1

Instrument :
 BNA_N
 ClientSampleId :
 COMP3

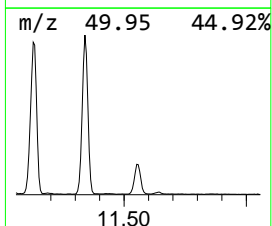
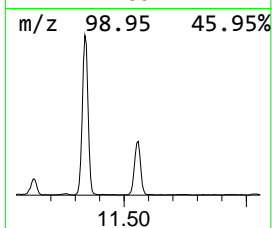
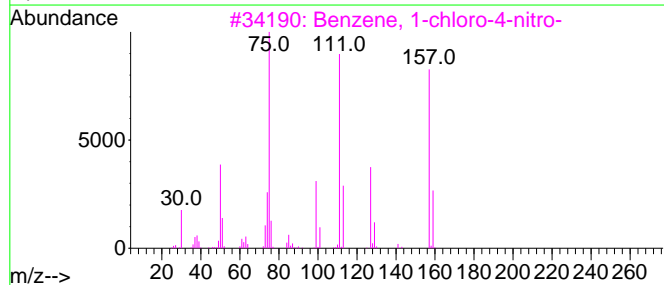
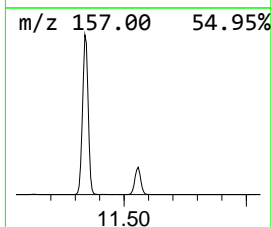
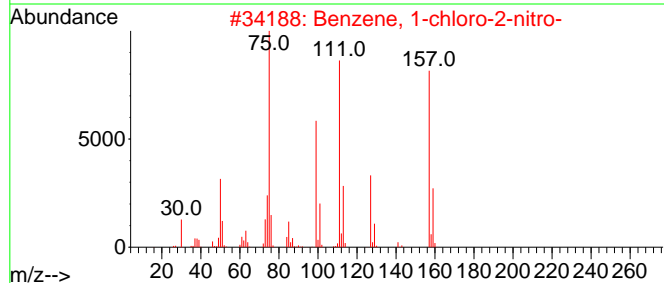
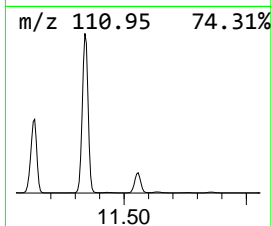
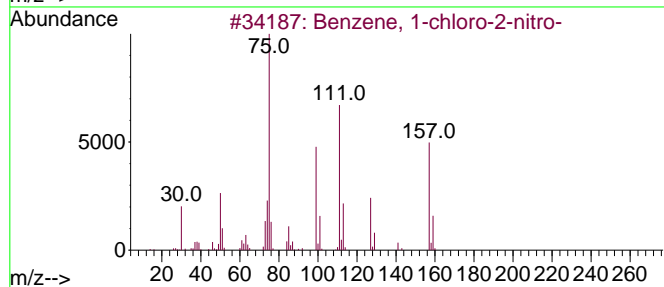
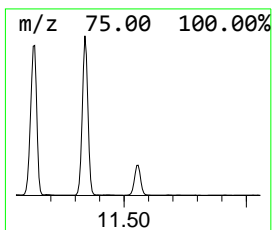
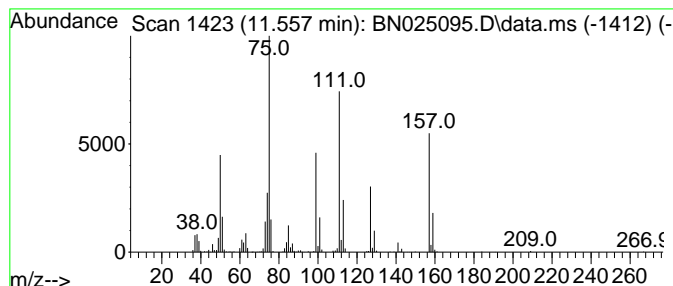
Quant Method : Z:\svoasrv\HPCHEM1\BNA_N\Methods\SFAM-EPA-BN041023.M
 Quant Title : SVOA CALIBRATION

TIC Library : C:\Database\NIST20.L
 TIC Integration Parameters: LSCINT.P

 Peak Number 12 Benzene, 1-chloro-2-nitro- Concentration Rank 14

R.T.	EstConc	Area	Relative to ISTD	R.T.
11.557	6.61 ng/ul	949612	Naphthalene-d8	10.740

Hit#	of	5	Tentative ID	MW	MolForm	CAS#	Qual
1			Benzene, 1-chloro-2-nitro-	157	C6H4ClNO2	000088-73-3	98
2			Benzene, 1-chloro-2-nitro-	157	C6H4ClNO2	000088-73-3	97
3			Benzene, 1-chloro-4-nitro-	157	C6H4ClNO2	000100-00-5	97
4			Benzene, 1-chloro-4-nitro-	157	C6H4ClNO2	000100-00-5	97
5			Benzene, 1-chloro-4-nitro-	157	C6H4ClNO2	000100-00-5	95



Data Path : Z:\svoasrv\HPCHEM1\BNA_N\Data\BN042223\
 Data File : BN025095.D
 Acq On : 23 Apr 2023 03:03
 Operator : CG/JU
 Sample : 02399-15
 Misc :
 ALS Vial : 27 Sample Multiplier: 1

Instrument :
 BNA_N
 ClientSampleId :
 COMP3

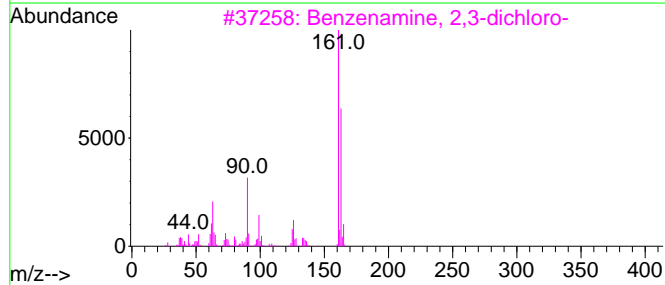
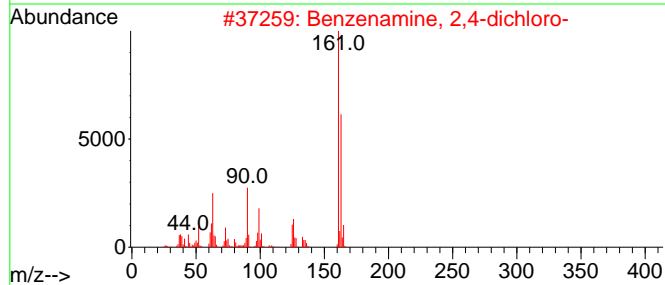
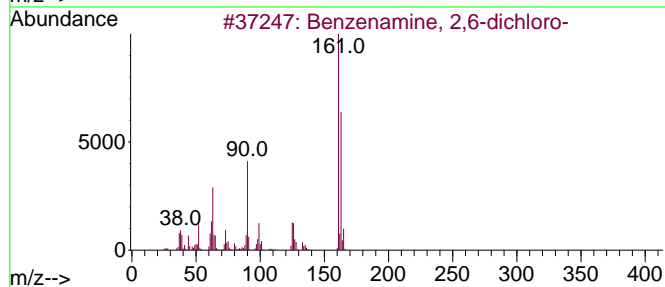
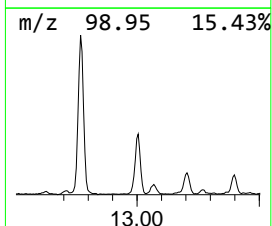
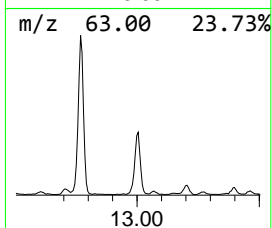
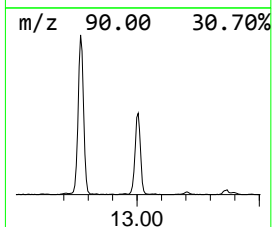
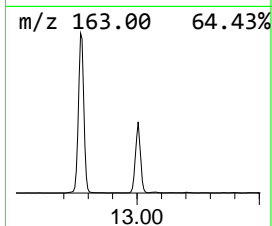
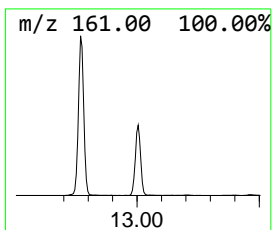
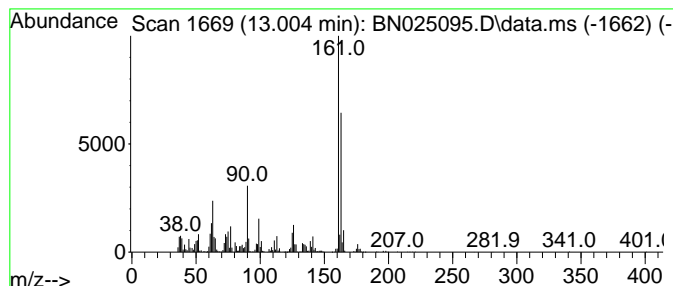
Quant Method : Z:\svoasrv\HPCHEM1\BNA_N\Methods\SFAM-EPA-BN041023.M
 Quant Title : SVOA CALIBRATION

TIC Library : C:\Database\NIST20.L
 TIC Integration Parameters: LSCINT.P

 Peak Number 13 Benzenamine, 2,6-dichloro- Concentration Rank 13

R.T.	EstConc	Area	Relative to ISTD	R.T.
13.004	7.86 ng/ul	1480950	Acenaphthene-d10	14.563

Hit#	of 5	Tentative ID	MW	MolForm	CAS#	Qual
1		Benzenamine, 2,6-dichloro-	161	C6H5Cl2N	000608-31-1	98
2		Benzenamine, 2,4-dichloro-	161	C6H5Cl2N	000554-00-7	98
3		Benzenamine, 2,3-dichloro-	161	C6H5Cl2N	000608-27-5	98
4		Benzenamine, 2,5-dichloro-	161	C6H5Cl2N	000095-82-9	98
5		Benzenamine, 2,6-dichloro-	161	C6H5Cl2N	000608-31-1	97



Data Path : Z:\svoasrv\HPCHEM1\BNA_N\Data\BN042223\
 Data File : BN025095.D
 Acq On : 23 Apr 2023 03:03
 Operator : CG/JU
 Sample : 02399-15
 Misc :
 ALS Vial : 27 Sample Multiplier: 1

Instrument :
 BNA_N
 ClientSampleId :
 COMP3

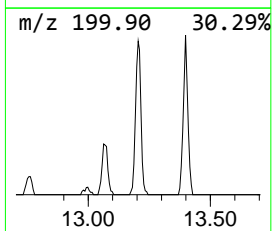
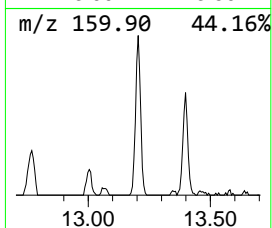
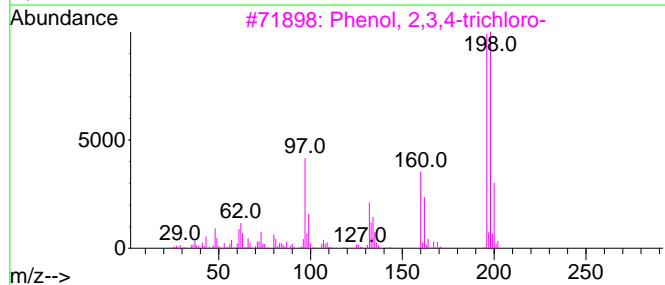
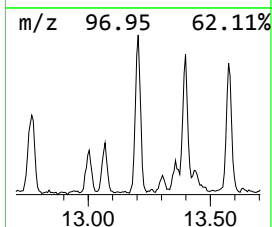
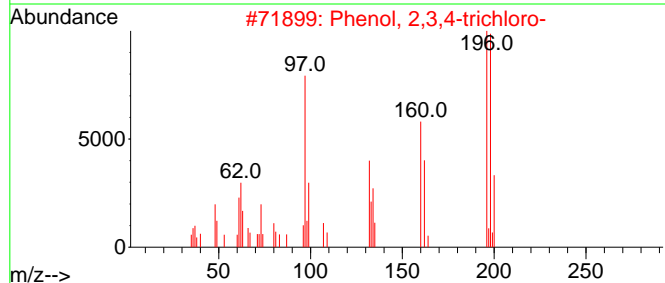
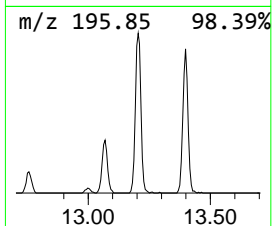
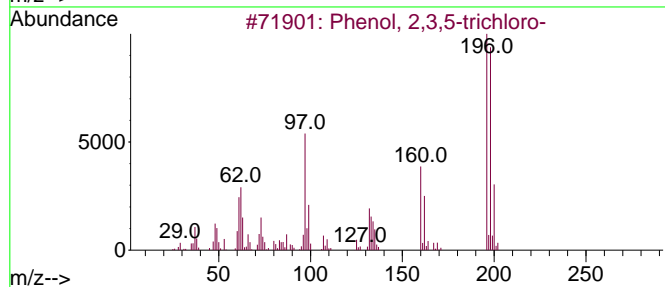
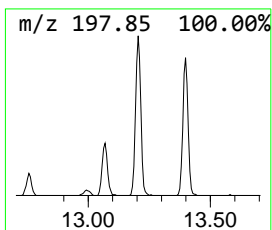
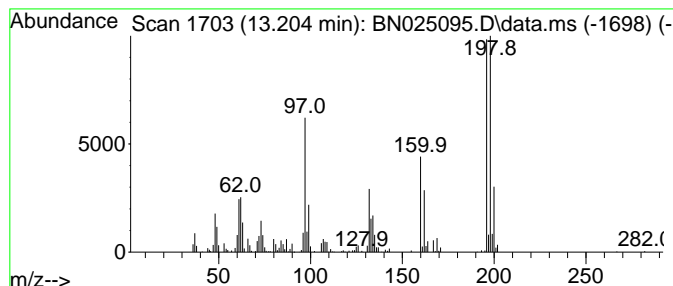
Quant Method : Z:\svoasrv\HPCHEM1\BNA_N\Methods\SFAM-EPA-BN041023.M
 Quant Title : SVOA CALIBRATION

TIC Library : C:\Database\NIST20.L
 TIC Integration Parameters: LSCINT.P

 Peak Number 14 Phenol, 2,3,5-trichloro- Concentration Rank 19

R.T.	EstConc	Area	Relative to ISTD	R.T.
13.204	2.22 ng/ul	417605	Acenaphthene-d10	14.563

Hit#	of 5	Tentative ID	MW	MolForm	CAS#	Qual
1		Phenol, 2,3,5-trichloro-	196	C6H3Cl3O	000933-78-8	99
2		Phenol, 2,3,4-trichloro-	196	C6H3Cl3O	015950-66-0	99
3		Phenol, 2,3,4-trichloro-	196	C6H3Cl3O	015950-66-0	99
4		Phenol, 2,3,5-trichloro-	196	C6H3Cl3O	000933-78-8	99
5		Phenol, 2,4,5-trichloro-	196	C6H3Cl3O	000095-95-4	98



Data Path : Z:\svoasrv\HPCHEM1\BNA_N\Data\BN042223\
 Data File : BN025095.D
 Acq On : 23 Apr 2023 03:03
 Operator : CG/JU
 Sample : 02399-15
 Misc :
 ALS Vial : 27 Sample Multiplier: 1

Instrument :
 BNA_N
 ClientSampleId :
 COMP3

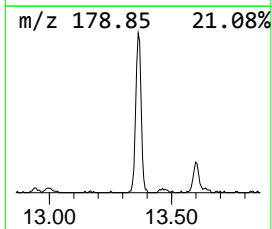
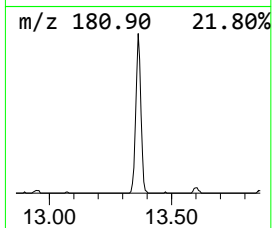
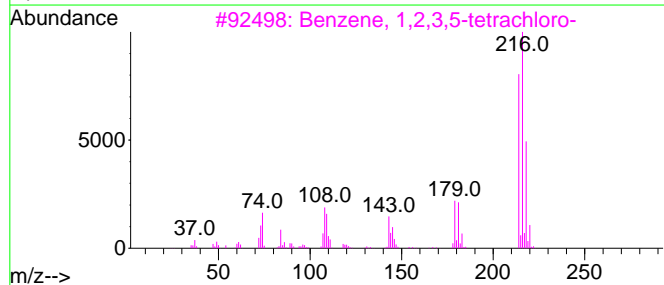
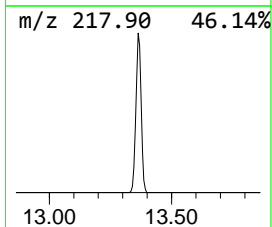
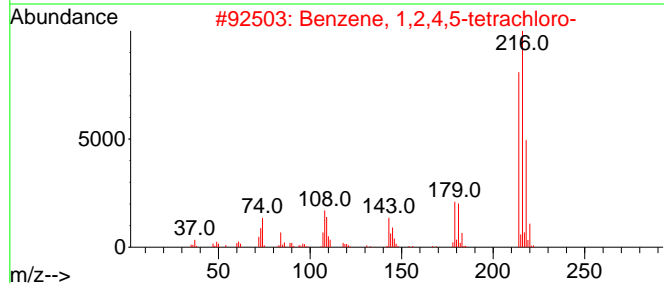
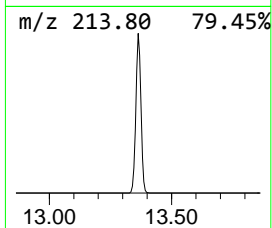
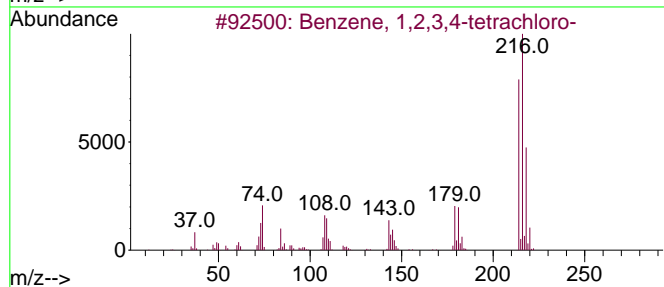
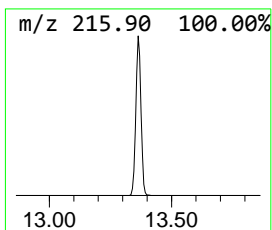
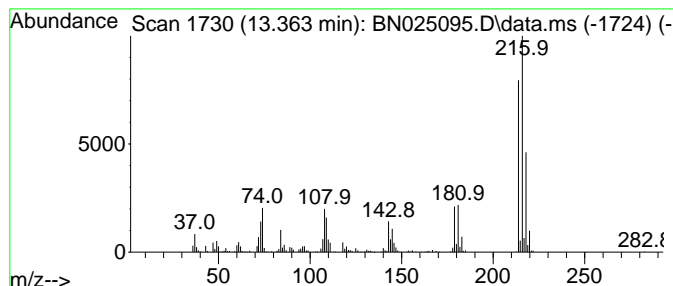
Quant Method : Z:\svoasrv\HPCHEM1\BNA_N\Methods\SFAM-EPA-BN041023.M
 Quant Title : SVOA CALIBRATION

TIC Library : C:\Database\NIST20.L
 TIC Integration Parameters: LSCINT.P

 Peak Number 15 Benzene, 1,2,3,4-tetrachloro- Concentration Rank 16

R.T.	EstConc	Area	Relative to ISTD	R.T.
13.363	4.62 ng/ul	870380	Acenaphthene-d10	14.563

Hit#	of	5	Tentative ID	MW	MolForm	CAS#	Qual
1			Benzene, 1,2,3,4-tetrachloro-	214	C6H2Cl4	000634-66-2	99
2			Benzene, 1,2,4,5-tetrachloro-	214	C6H2Cl4	000095-94-3	99
3			Benzene, 1,2,3,5-tetrachloro-	214	C6H2Cl4	000634-90-2	99
4			Benzene, 1,2,3,4-tetrachloro-	214	C6H2Cl4	000634-66-2	98
5			Benzene, 1,2,3,5-tetrachloro-	214	C6H2Cl4	000634-90-2	98



Data Path : Z:\svoasrv\HPCHEM1\BNA_N\Data\BN042223\
 Data File : BN025095.D
 Acq On : 23 Apr 2023 03:03
 Operator : CG/JU
 Sample : 02399-15
 Misc :
 ALS Vial : 27 Sample Multiplier: 1

Instrument :
 BNA_N
 ClientSampleId :
 COMP3

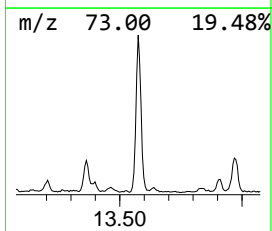
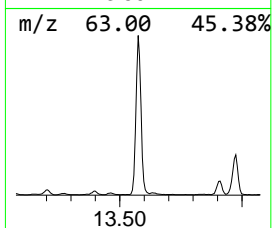
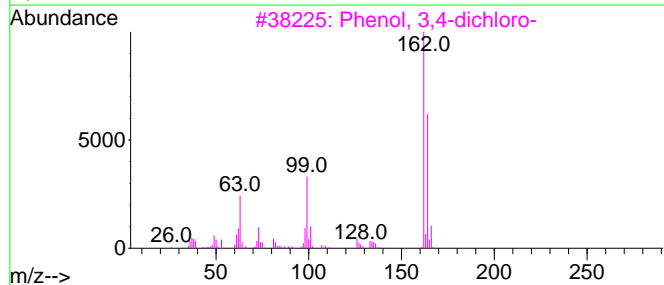
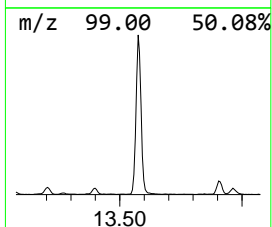
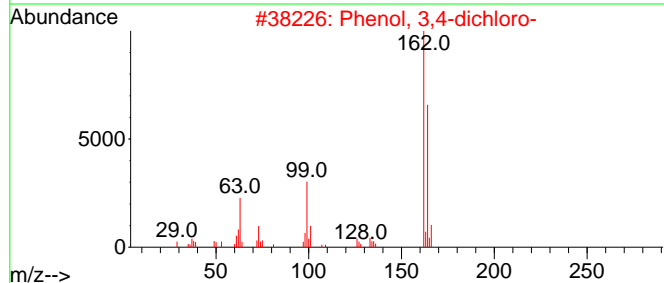
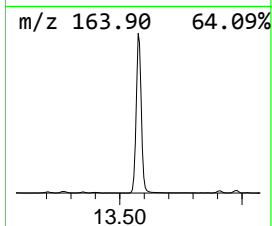
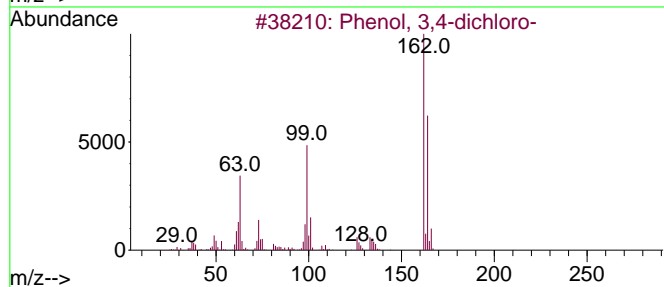
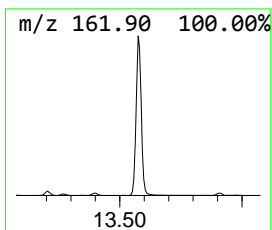
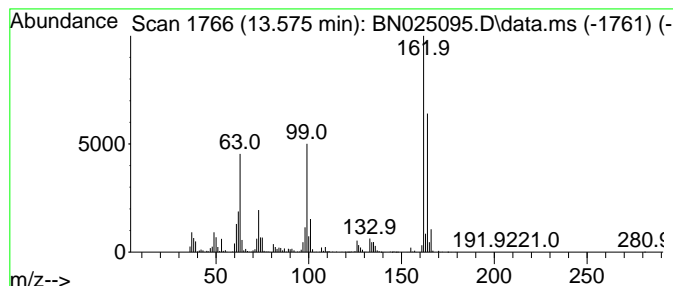
Quant Method : Z:\svoasrv\HPCHEM1\BNA_N\Methods\SFAM-EPA-BN041023.M
 Quant Title : SVOA CALIBRATION

TIC Library : C:\Database\NIST20.L
 TIC Integration Parameters: LSCINT.P

 Peak Number 16 Phenol, 3,4-dichloro- Concentration Rank 11

R.T.	EstConc	Area	Relative to ISTD	R.T.
13.575	14.98 ng/ul	2821440	Acenaphthene-d10	14.563

Hit#	of 5	Tentative ID	MW	MolForm	CAS#	Qual
1		Phenol, 3,4-dichloro-	162	C6H4Cl2O	000095-77-2	97
2		Phenol, 3,4-dichloro-	162	C6H4Cl2O	000095-77-2	97
3		Phenol, 3,4-dichloro-	162	C6H4Cl2O	000095-77-2	96
4		Phenol, 3,5-dichloro-	162	C6H4Cl2O	000591-35-5	95
5		Phenol, 3,4-dichloro-	162	C6H4Cl2O	000095-77-2	95



Data Path : Z:\svoasrv\HPCHEM1\BNA_N\Data\BN042223\
 Data File : BN025095.D
 Acq On : 23 Apr 2023 03:03
 Operator : CG/JU
 Sample : 02399-15
 Misc :
 ALS Vial : 27 Sample Multiplier: 1

Instrument :
 BNA_N
 ClientSampleId :
 COMP3

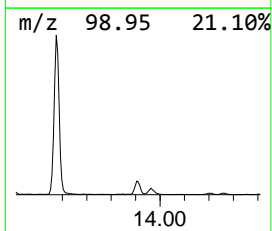
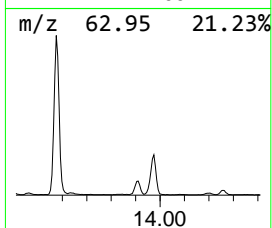
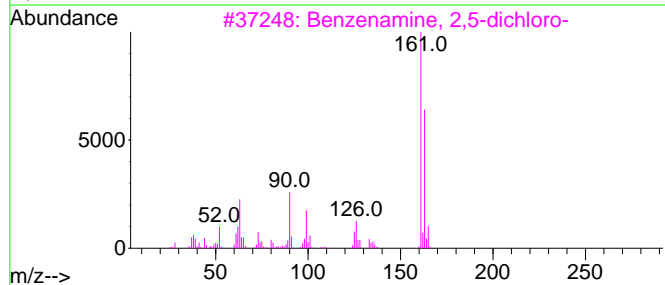
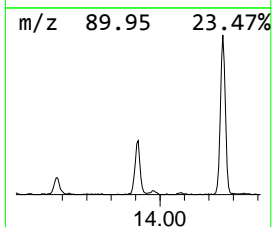
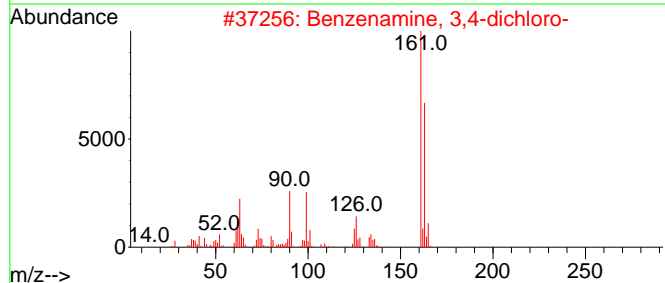
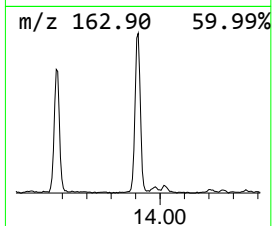
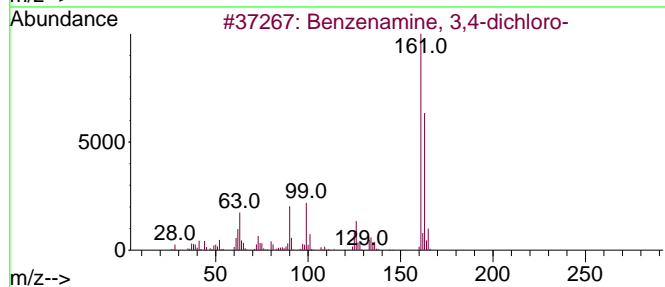
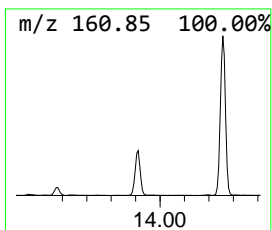
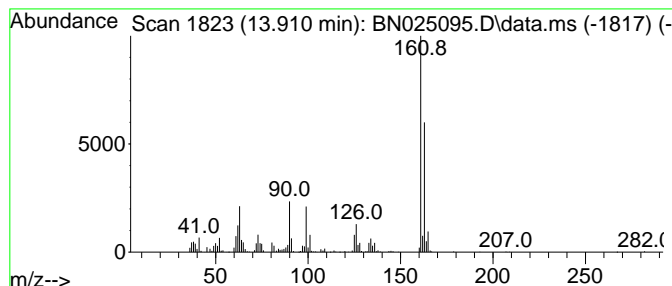
Quant Method : Z:\svoasrv\HPCHEM1\BNA_N\Methods\SFAM-EPA-BN041023.M
 Quant Title : SVOA CALIBRATION

TIC Library : C:\Database\NIST20.L
 TIC Integration Parameters: LSCINT.P

 Peak Number 17 Benzenamine, 3,4-dichloro- Concentration Rank 18

R.T.	EstConc	Area	Relative to ISTD	R.T.
13.910	2.29 ng/ul	431261	Acenaphthene-d10	14.563

Hit#	of 5	Tentative ID	MW	MolForm	CAS#	Qual
1		Benzenamine, 3,4-dichloro-	161	C6H5Cl2N	000095-76-1	98
2		Benzenamine, 3,4-dichloro-	161	C6H5Cl2N	000095-76-1	98
3		Benzenamine, 2,5-dichloro-	161	C6H5Cl2N	000095-82-9	98
4		Benzenamine, 3,5-dichloro-	161	C6H5Cl2N	000626-43-7	98
5		Benzenamine, 2,4-dichloro-	161	C6H5Cl2N	000554-00-7	97



Data Path : Z:\svoasrv\HPCHEM1\BNA_N\Data\BN042223\
 Data File : BN025095.D
 Acq On : 23 Apr 2023 03:03
 Operator : CG/JU
 Sample : 02399-15
 Misc :
 ALS Vial : 27 Sample Multiplier: 1

Instrument :
 BNA_N
 ClientSampleId :
 COMP3

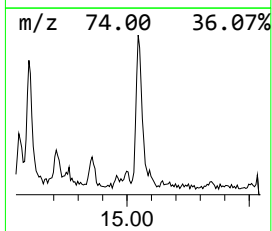
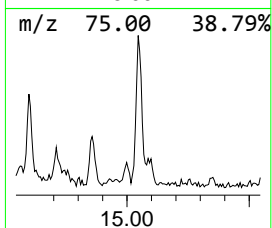
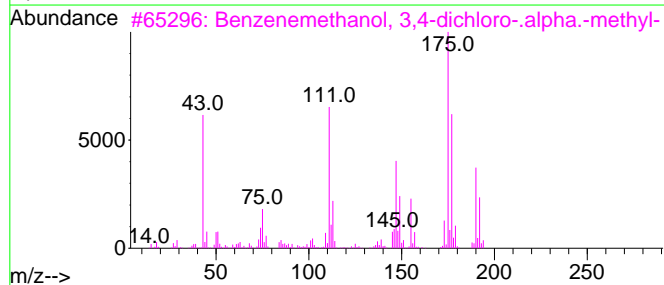
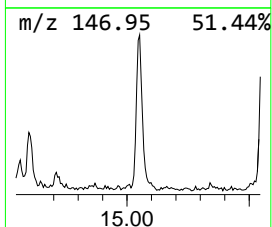
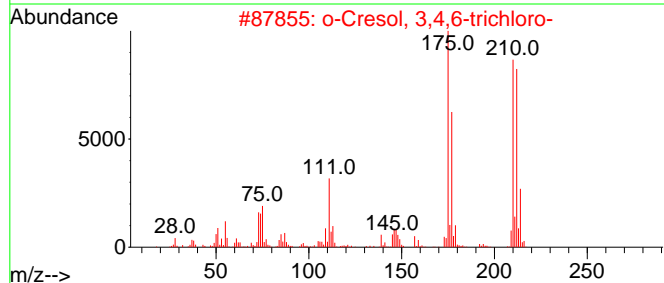
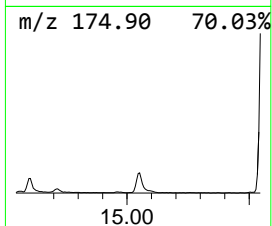
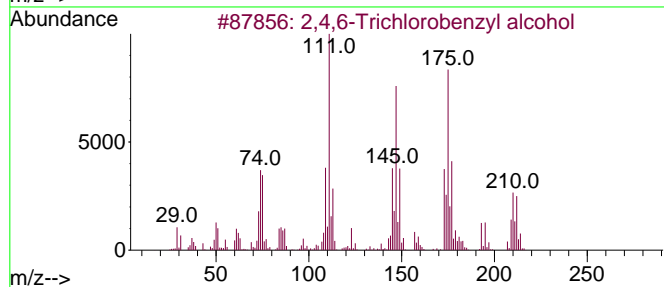
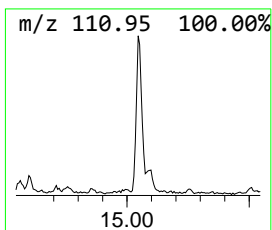
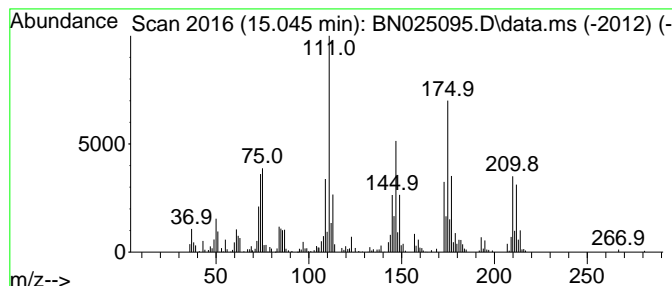
Quant Method : Z:\svoasrv\HPCHEM1\BNA_N\Methods\SFAM-EPA-BN041023.M
 Quant Title : SVOA CALIBRATION

TIC Library : C:\Database\NIST20.L
 TIC Integration Parameters: LSCINT.P

 Peak Number 18 2,4,6-Trichlorobenzyl alcohol Concentration Rank 20

R.T.	EstConc	Area	Relative to ISTD	R.T.
15.045	2.07 ng/ul	389598	Acenaphthene-d10	14.563

Hit#	of 5	Tentative ID	MW	MolForm	CAS#	Qual
1		2,4,6-Trichlorobenzyl alcohol	210	C7H5Cl3O	217479-60-2	91
2		o-Cresol, 3,4,6-trichloro-	210	C7H5Cl3O	000643-14-1	84
3		Benzenemethanol, 3,4-dichloro-.a...	190	C8H8Cl2O	001475-11-2	50
4		2,5-Dichloro-.alpha.-methylbenzy...	190	C8H8Cl2O	001475-12-3	40
5		Phenyl trichlorosilane	210	C6H5Cl3Si	000098-13-5	38



Data Path : Z:\svoasrv\HPCHEM1\BNA_N\Data\BN042223\
 Data File : BN025095.D
 Acq On : 23 Apr 2023 03:03
 Operator : CG/JU
 Sample : 02399-15
 Misc :
 ALS Vial : 27 Sample Multiplier: 1

Instrument :
 BNA_N
 ClientSampleId :
 COMP3

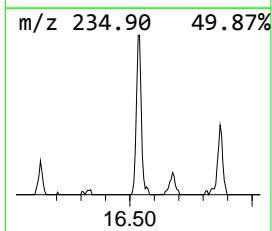
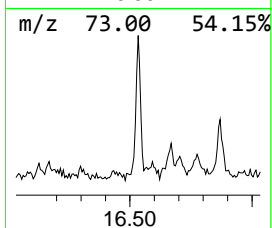
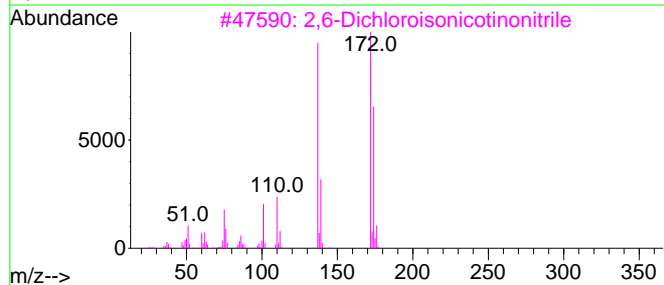
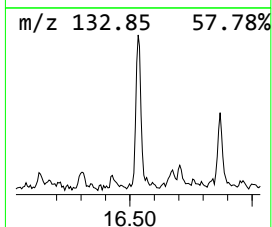
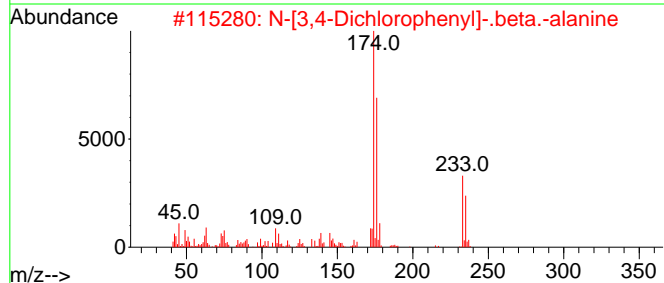
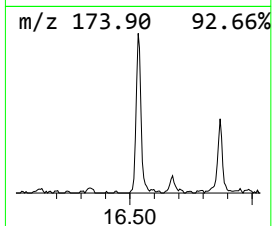
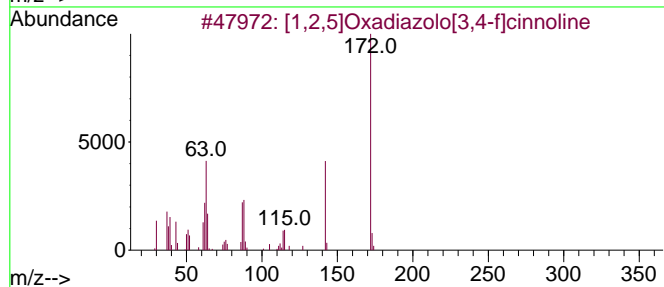
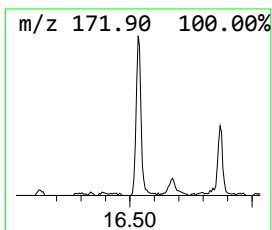
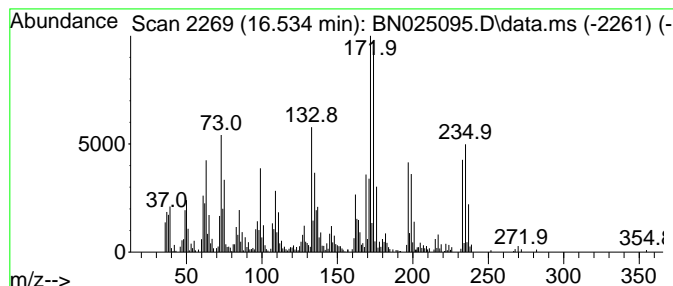
Quant Method : Z:\svoasrv\HPCHEM1\BNA_N\Methods\SFAM-EPA-BN041023.M
 Quant Title : SVOA CALIBRATION

TIC Library : C:\Database\NIST20.L
 TIC Integration Parameters: LSCINT.P

 Peak Number 19 unknown-02 Concentration Rank 17

R.T.	EstConc	Area	Relative to ISTD	R.T.
16.534	2.33 ng/ul	525005	Phenanthrene-d10	17.310

Hit#	of	5	Tentative ID	MW	MolForm	CAS#	Qual
1			[1,2,5]Oxadiazolo[3,4-f]cinnoline	172	C8H4N4O	217491-04-8	35
2			N-[3,4-Dichlorophenyl]-.beta.-al...	233	C9H9Cl2NO2	031399-32-3	25
3			2,6-Dichloroisonicotinonitrile	172	C6H2Cl2N2	032710-65-9	25
4			Pyridine, 2-chloro-4-nitro-, 1-o...	174	C5H3ClN2O3	014432-16-7	15
5			1-Chloro-1-chloromethyl-1-silacy...	182	C6H12Cl2Si	019923-50-3	14



Data Path : Z:\svoasrv\HPCHEM1\BNA_N\Data\BN042223\
 Data File : BN025095.D
 Acq On : 23 Apr 2023 03:03
 Operator : CG/JU
 Sample : 02399-15
 Misc :
 ALS Vial : 27 Sample Multiplier: 1

Instrument :
 BNA_N
 ClientSampleId :
 COMP3

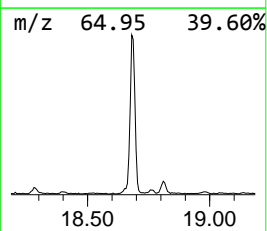
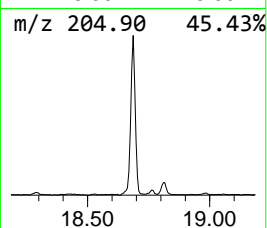
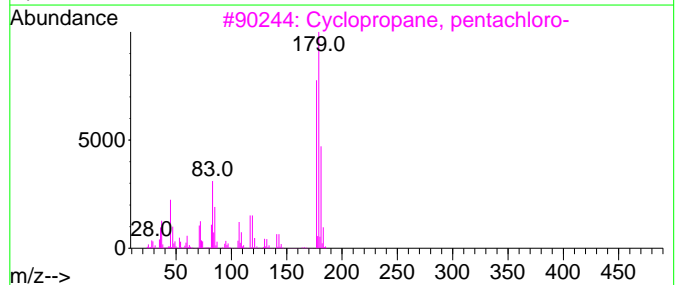
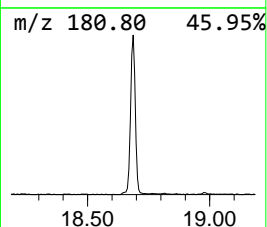
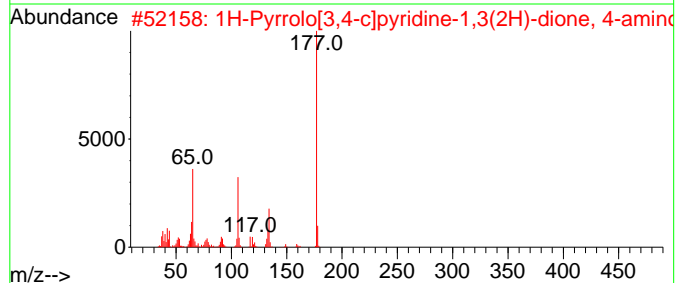
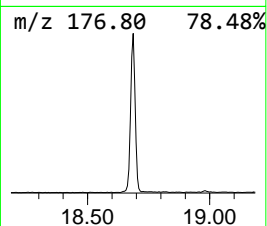
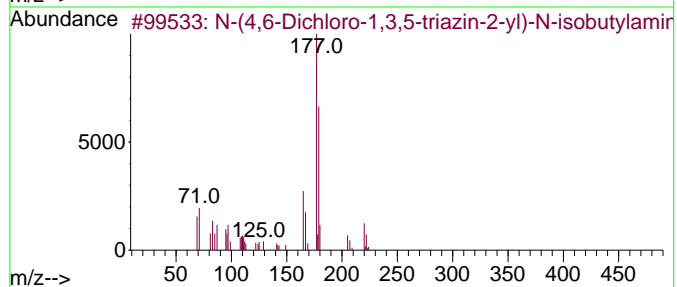
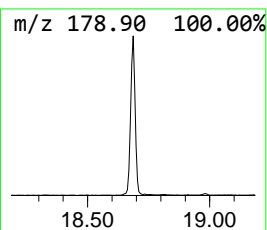
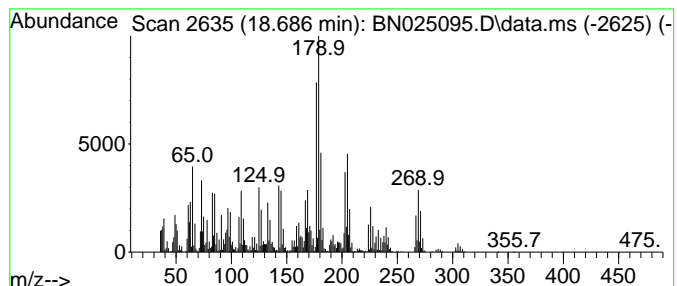
Quant Method : Z:\svoasrv\HPCHEM1\BNA_N\Methods\SFAM-EPA-BN041023.M
 Quant Title : SVOA CALIBRATION

TIC Library : C:\Database\NIST20.L
 TIC Integration Parameters: LSCINT.P

 Peak Number 20 unknown-03 Concentration Rank 10

R.T.	EstConc	Area	Relative to ISTD	R.T.
18.686	15.43 ng/ul	3482730	Phenanthrene-d10	17.310

Hit#	of 5	Tentative ID	MW	MolForm	CAS#	Qual
1		N-(4,6-Dichloro-1,3,5-triazin-2-...	220	C7H10Cl2N4	1000326-88-2	35
2		1H-Pyrrolo[3,4-c]pyridine-1,3(2H...	177	C8H7N3O2	090004-20-9	32
3		Cyclopropane, pentachloro-	212	C3HCl5	006262-51-7	22
4		2,1-benzisoxazole-5-carboxylic a...	179	C8H5NO4	1000404-80-3	15
5		Methyl 2,5-dichlorothiophene-3-c...	210	C6H4Cl2O2S	145129-54-0	14



Data Path : Z:\svoasrv\HPCHEM1\BNA_N\Data\BN042223\
 Data File : BN025095.D
 Acq On : 23 Apr 2023 03:03
 Operator : CG/JU
 Sample : 02399-15
 Misc :
 ALS Vial : 27 Sample Multiplier: 1

Instrument :
 BNA_N
 ClientSampleId :
 COMP3

Quant Method : Z:\svoasrv\HPCHEM1\BNA_N\Methods\SFAM-EPA-BN041023.M
 Quant Title : SVOA CALIBRATION

TIC Library : C:\Database\NIST0.L
 TIC Integration Parameters: LSCINT.P

TIC Top Hit name	RT	EstConc	Units	Response	--Internal Standard--			
					#	RT	Resp	Conc
Benzene, chloro-	5.216	19.7	ng/ul	95631500	1	7.952	97064700	20.0
unknown-01	5.387	4.9	ng/ul	23769900	1	7.952	97064700	20.0
Benzene, 1,4-di...	7.828	20.0	ng/ul	97064700	1	7.952	97064700	20.0
Benzene, 1,2-di...	8.375	50.4	ng/ul	244694000	1	7.952	97064700	20.0
Benzene, 1-brom...	9.434	9.0	ng/ul	1294220	2	10.740	2873480	20.0
m-Chloroaniline	9.769	76.2	ng/ul	10952200	2	10.740	2873480	20.0
Phenol, 2,5-dic...	10.422	18.2	ng/ul	2612520	2	10.740	2873480	20.0
Phenol, 2,3-dic...	10.522	35.9	ng/ul	5162080	2	10.740	2873480	20.0
Benzene, 1,2,4-...	10.622	595.0	ng/ul	85484200	2	10.740	2873480	20.0
Benzene, 1,2,3-...	11.134	164.1	ng/ul	23580800	2	10.740	2873480	20.0
Benzene, 1-chlo...	11.340	29.9	ng/ul	4301260	2	10.740	2873480	20.0
Benzene, 1-chlo...	11.557	6.6	ng/ul	949612	2	10.740	2873480	20.0
Benzenamine, 2,...	13.004	7.9	ng/ul	1480950	3	14.563	3767940	20.0
Phenol, 2,3,5-t...	13.204	2.2	ng/ul	417605	3	14.563	3767940	20.0
Benzene, 1,2,3,...	13.363	4.6	ng/ul	870380	3	14.563	3767940	20.0
Phenol, 3,4-dic...	13.575	15.0	ng/ul	2821440	3	14.563	3767940	20.0
Benzenamine, 3,...	13.910	2.3	ng/ul	431261	3	14.563	3767940	20.0
2,4,6-Trichloro...	15.045	2.1	ng/ul	389598	3	14.563	3767940	20.0
unknown-02	16.534	2.3	ng/ul	525005	4	17.310	4513040	20.0
unknown-03	18.686	15.4	ng/ul	3482730	4	17.310	4513040	20.0