

Data Path : Z:\SVOASRV\HPCHEM1\BNA N\DATA\BN042420\  
 Data File : BN010592.D  
 Acq On : 24 Apr 2020 17:13  
 Operator : CG/JU  
 Sample : L2330-09  
 Misc :  
 ALS Vial : 11 Sample Multiplier: 1

Instrument :  
 BNA\_N  
 ClientSampleId :  
 FB-GW-2020-04-16

Quant Time: Apr 24 18:09:29 2020  
 Quant Method : Z:\SVOASRV\HPCHEM1\BNA N\METHODS\8270-SIM-BN041320.M  
 Quant Title : ASP BNA STANDARDS FOR 5 POINT CALIBRATION  
 QLast Update : Fri Apr 24 12:47:59 2020  
 Response via : Initial Calibration

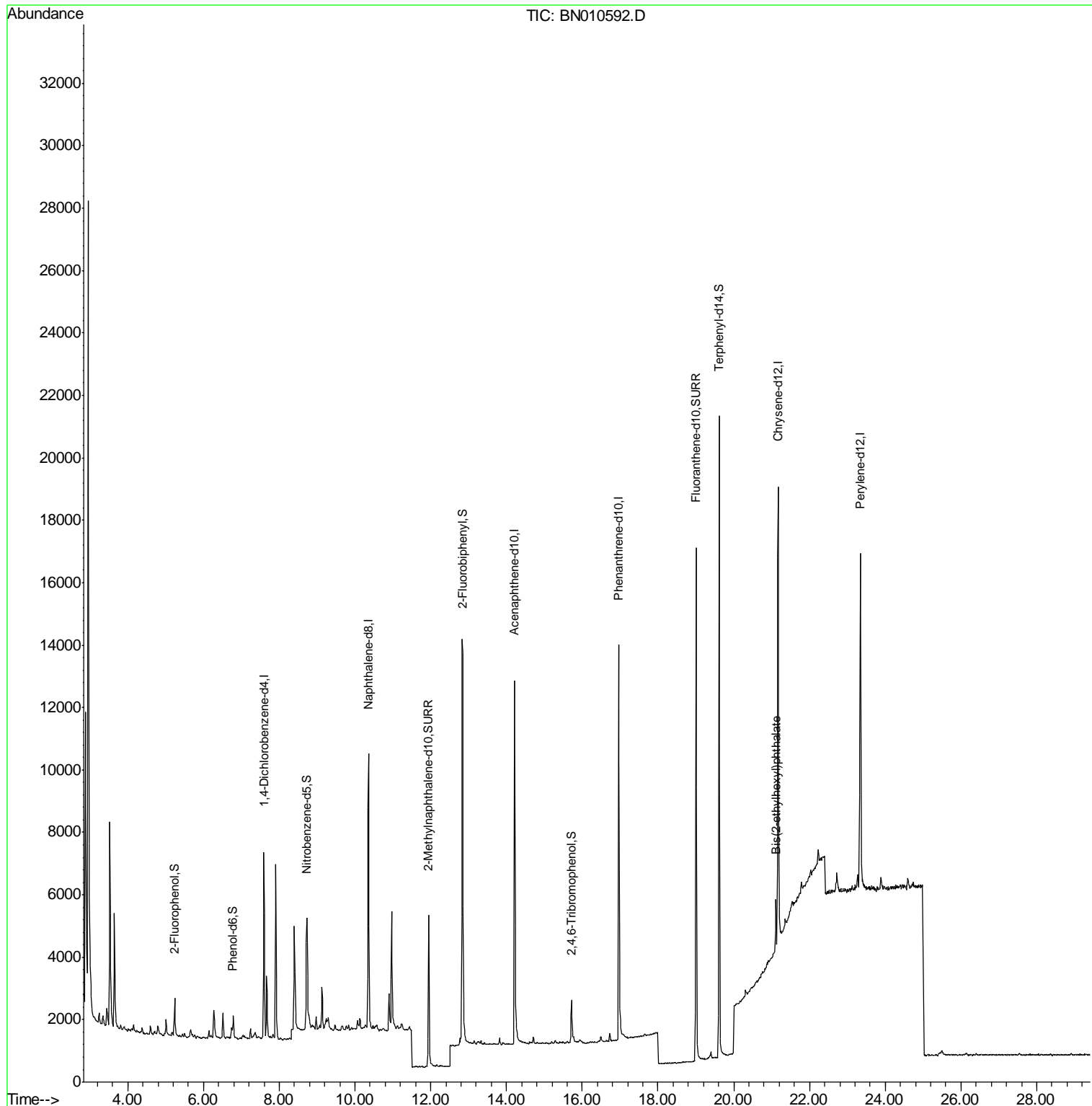
Internal Standards	R.T.	QIon	Response	Conc	Units	Dev(Min)	
1) 1,4-Dichlorobenzene-d4	7.60	152	3022	0.40	ng	0.00	
7) Naphthalene-d8	10.35	136	12968	0.40	ng	0.00	
13) Acenaphthene-d10	14.21	164	8411	0.40	ng	0.00	
19) Phenanthrene-d10	16.96	188	19532	0.40	ng	0.00	
27) Chrysene-d12	21.17	240	16587	0.40	ng	0.00	
34) Perylene-d12	23.34	264	15118	0.40	ng	0.00	
System Monitoring Compounds							
4) 2-Fluorophenol	5.24	112	1292	0.20	ng	0.00	
5) Phenol-d6	6.79	99	859	0.10	ng	0.00	
8) Nitrobenzene-d5	8.73	82	3594	0.40	ng	0.00	
11) 2-Methylnaphthalene-d10	11.94	152	7410	0.35	ng	0.00	
14) 2,4,6-Tribromophenol	15.72	330	1293	0.33	ng	0.00	
15) 2-Fluorobiphenyl	12.84	172	14611	0.48	ng	0.01	
25) Fluoranthene-d10	19.00	212	20594	0.35	ng	0.00	
29) Terphenyl-d14	19.61	244	22261	0.59	ng	0.00	
Target Compounds							Qvalue
32) Bis(2-ethylhexyl)phthalate	21.11	149	1454	0.052	ng		95

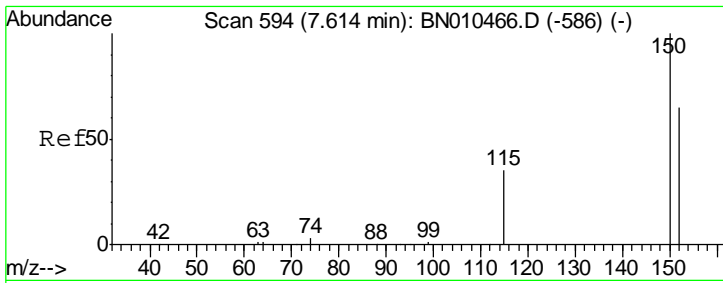
(#) = qualifier out of range (m) = manual integration (+) = signals summed

Data Path : Z:\SVOASRV\HPCHEM1\BNA N\DATA\BN042420\  
 Data File : BN010592.D  
 Acq On : 24 Apr 2020 17:13  
 Operator : CG/JU  
 Sample : L2330-09  
 Misc :  
 ALS Vial : 11 Sample Multiplier: 1

Instrument :  
 BNA\_N  
 ClientSampleId :  
 FB-GW-2020-04-16

Quant Time: Apr 24 18:09:29 2020  
 Quant Method : Z:\SVOASRV\HPCHEM1\BNA N\METHODS\8270-SIM-BN041320.M  
 Quant Title : ASP BNA STANDARDS FOR 5 POINT CALIBRATION  
 QLast Update : Fri Apr 24 12:47:59 2020  
 Response via : Initial Calibration

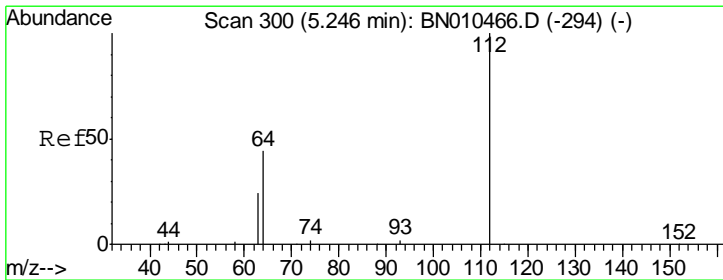
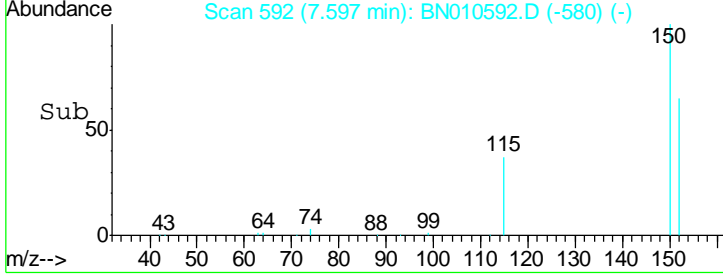
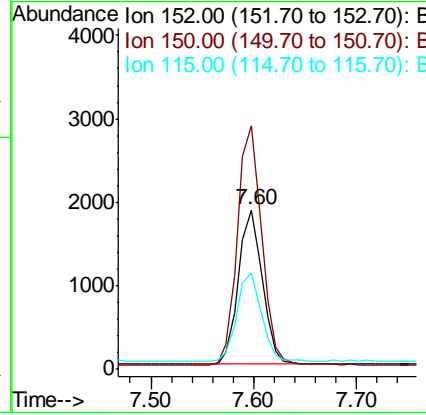
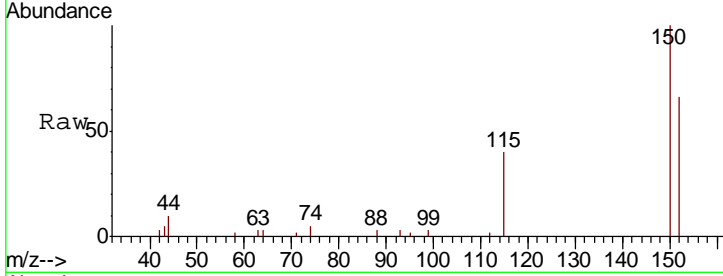




#1  
 1,4-Dichlorobenzene-d4  
 Concen: 0.400 ng  
 RT: 7.60 min Scan# 592  
 Delta R.T. -0.00 min  
 Lab File: BN010592.D  
 Acq: 24 Apr 2020 17:13

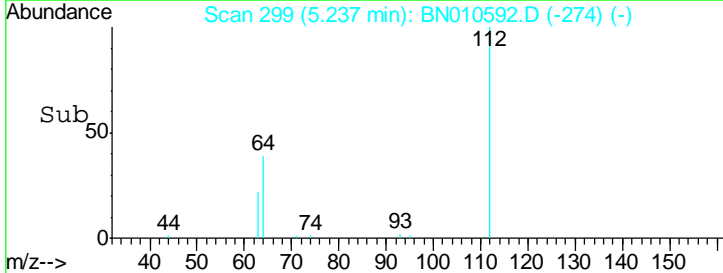
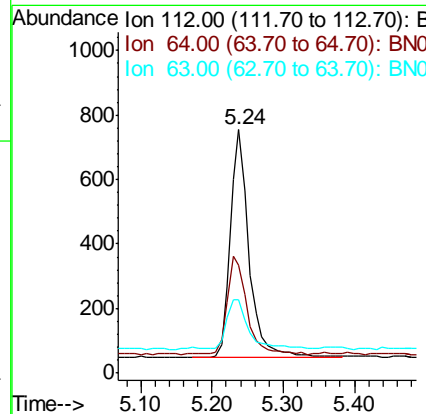
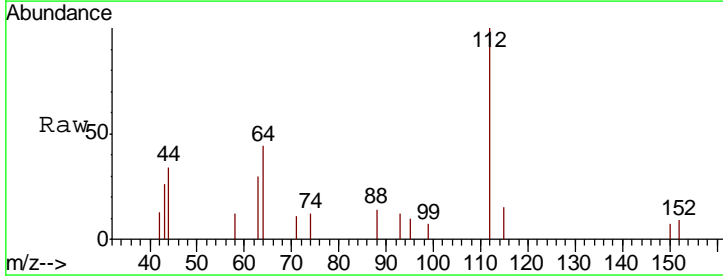
**Instrument :**  
 BNA\_N  
**ClientSampled :**  
 FB-GW-2020-04-16

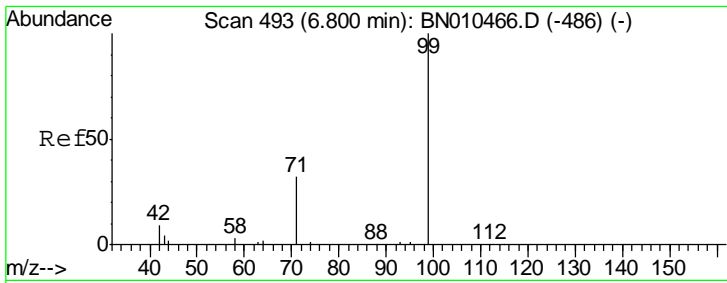
Tgt Ion	Resp	Lower	Upper
152	100		
150	152.4	121.8	182.6
115	60.5	45.5	68.3



#4  
 2-Fluorophenol  
 Concen: 0.195 ng  
 RT: 5.24 min Scan# 299  
 Delta R.T. -0.00 min  
 Lab File: BN010592.D  
 Acq: 24 Apr 2020 17:13

Tgt Ion	Resp	Lower	Upper
112	100		
64	44.7	35.8	53.8
63	25.9	19.9	29.9

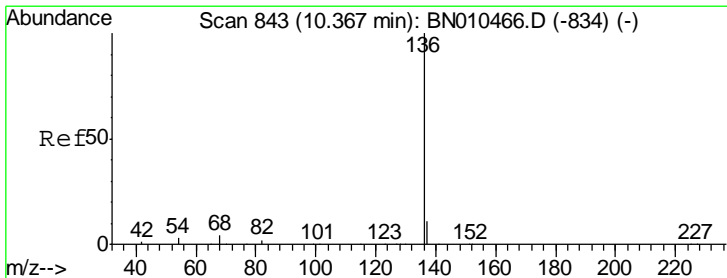
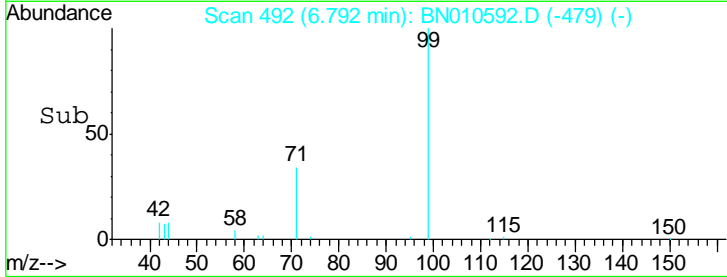
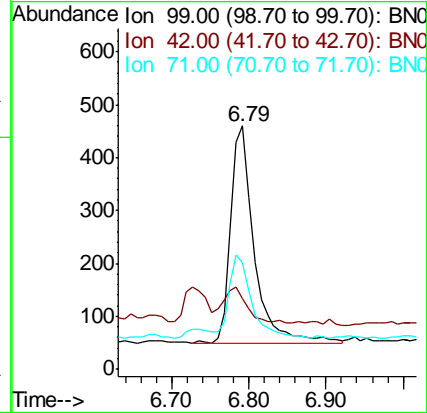
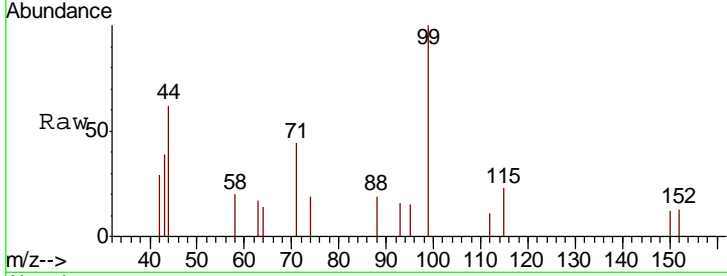




#5  
 Phenol-d6  
 Concen: 0.099 ng  
 RT: 6.79 min Scan# 492  
 Delta R.T. 0.01 min  
 Lab File: BN010592.D  
 Acq: 24 Apr 2020 17:13

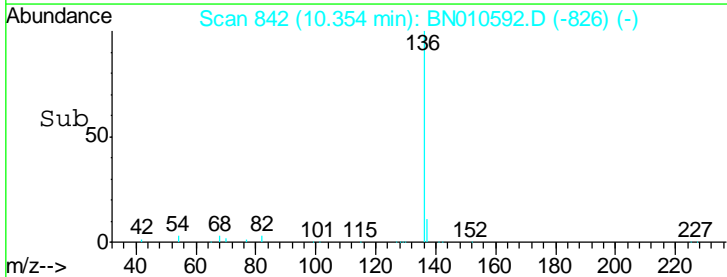
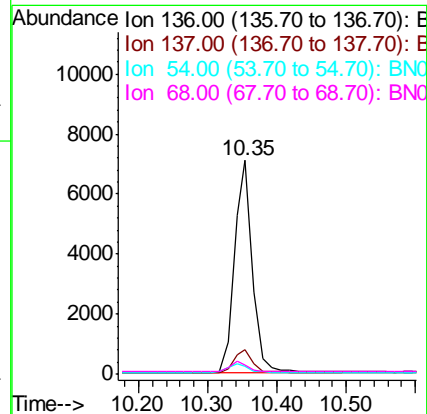
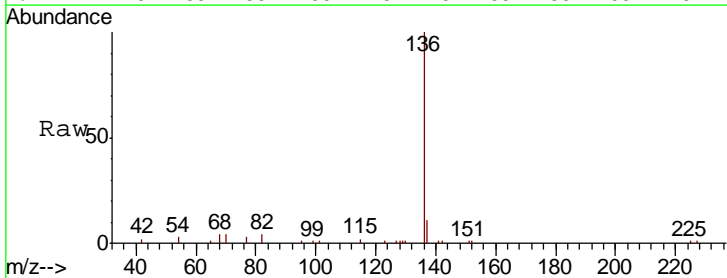
Instrument :  
 BNA\_N  
 ClientSampled :  
 FB-GW-2020-04-16

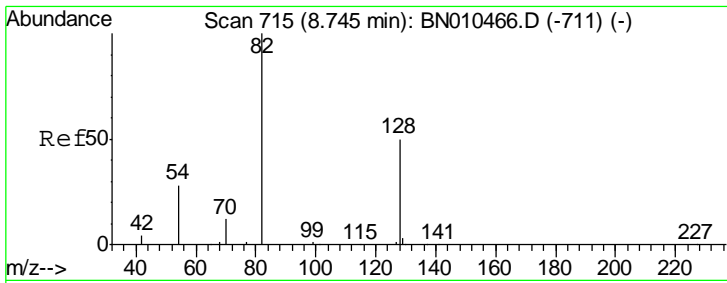
Tgt Ion	Resp	Lower	Upper
99	859		
42	15.6	9.8	14.6#
71	38.2	27.8	41.8



#7  
 Naphthalene-d8  
 Concen: 0.400 ng  
 RT: 10.35 min Scan# 842  
 Delta R.T. -0.00 min  
 Lab File: BN010592.D  
 Acq: 24 Apr 2020 17:13

Tgt Ion	Resp	Lower	Upper
136	12968		
137	11.3	8.9	13.3
54	3.3	2.6	4.0
68	4.4	3.4	5.2

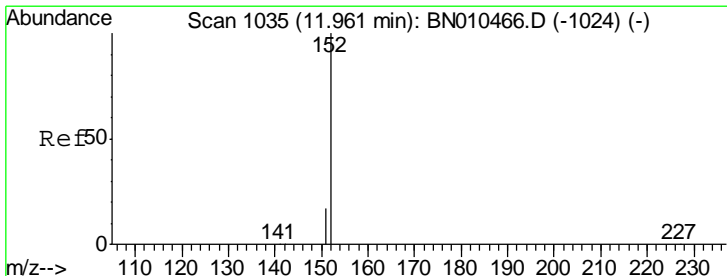
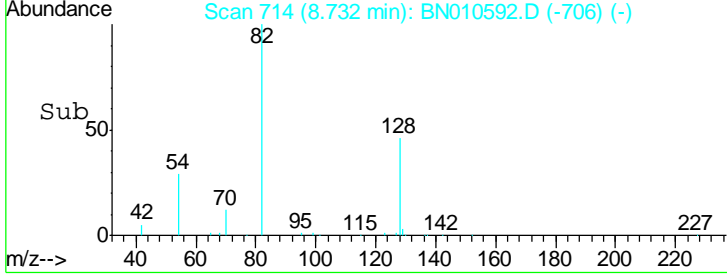
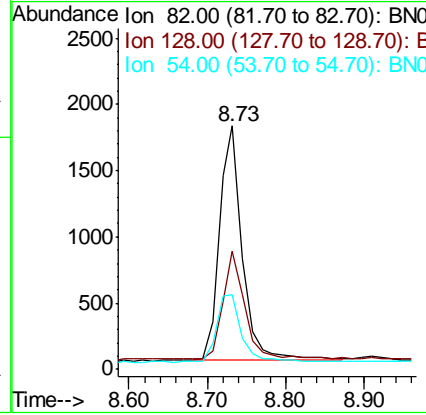
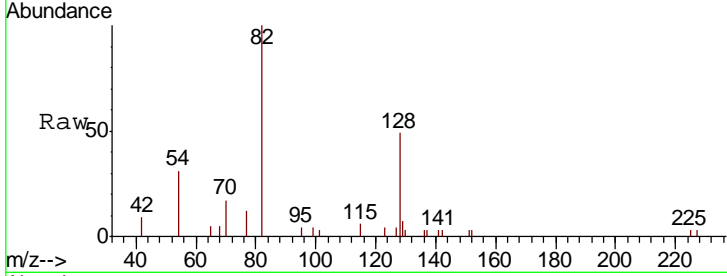




#8  
 Nitrobenzene-d5  
 Concen: 0.396 ng  
 RT: 8.73 min Scan# 714  
 Delta R.T. -0.00 min  
 Lab File: BN010592.D  
 Acq: 24 Apr 2020 17:13

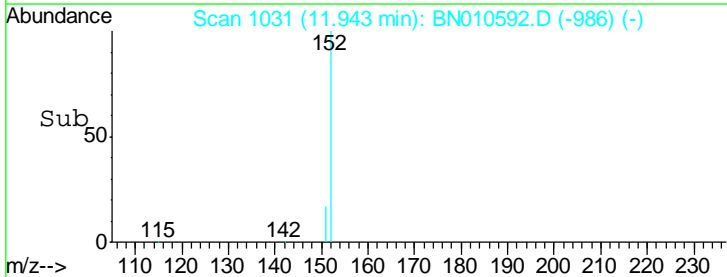
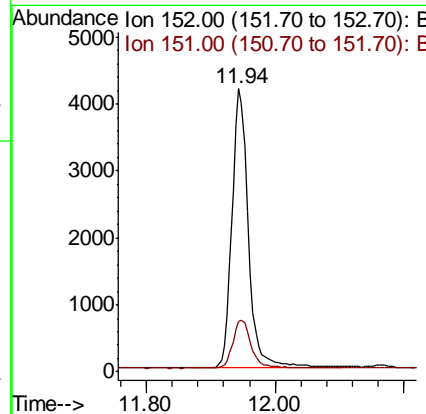
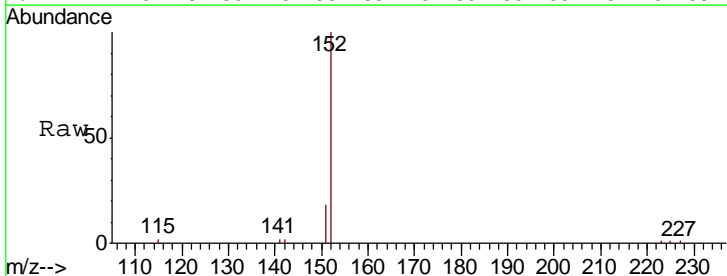
**Instrument :**  
 BNA\_N  
**ClientSampleId :**  
 FB-GW-2020-04-16

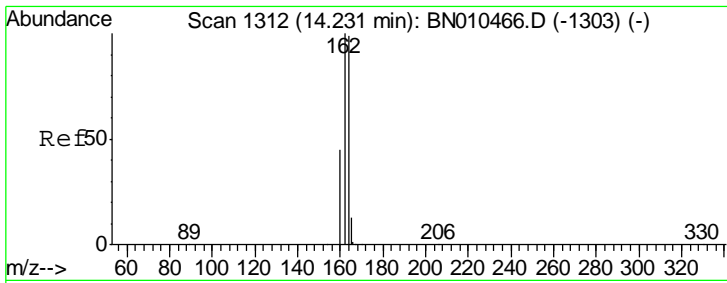
Tgt Ion	Resp	Lower	Upper
82	3594		
128	48.6	41.3	61.9
54	30.8	23.4	35.0



#11  
 2-Methylnaphthalene-d10  
 Concen: 0.348 ng  
 RT: 11.94 min Scan# 1031  
 Delta R.T. -0.00 min  
 Lab File: BN010592.D  
 Acq: 24 Apr 2020 17:13

Tgt Ion	Resp	Lower	Upper
152	7410		
151	18.9	15.3	22.9

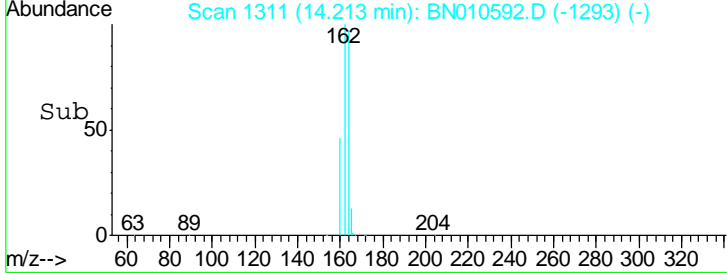
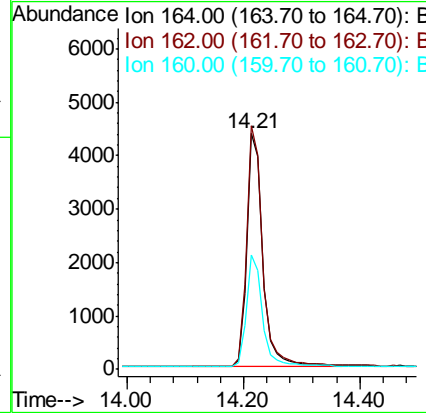
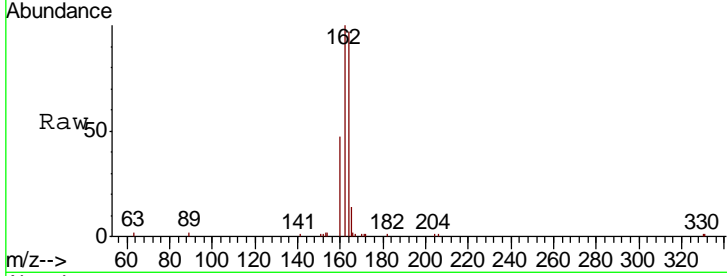




#13  
 Acenaphthene-d10  
 Concen: 0.400 ng  
 RT: 14.21 min Scan# 1311  
 Delta R.T. -0.00 min  
 Lab File: BN010592.D  
 Acq: 24 Apr 2020 17:13

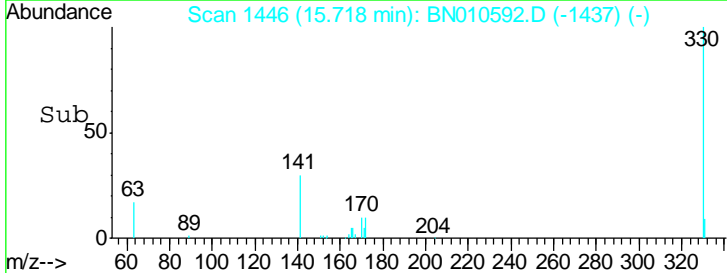
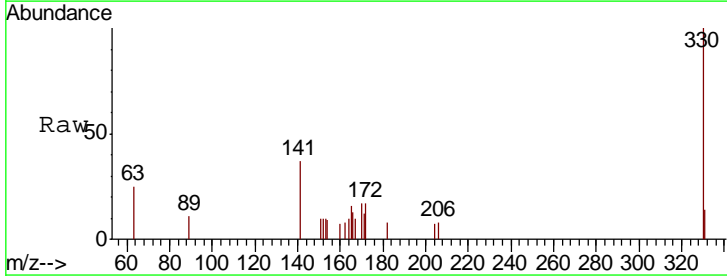
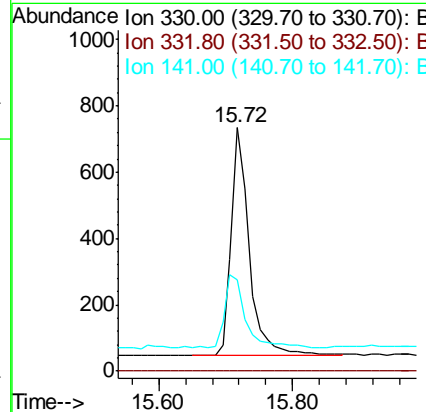
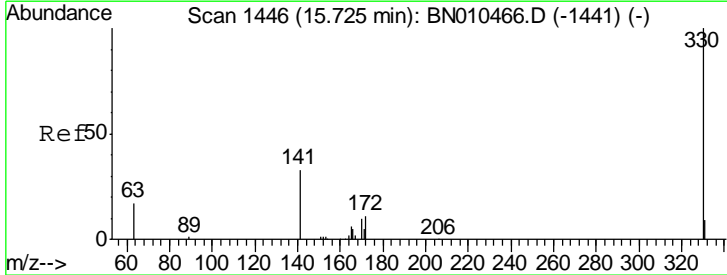
Instrument :  
 BNA\_N  
 ClientSampleId :  
 FB-GW-2020-04-16

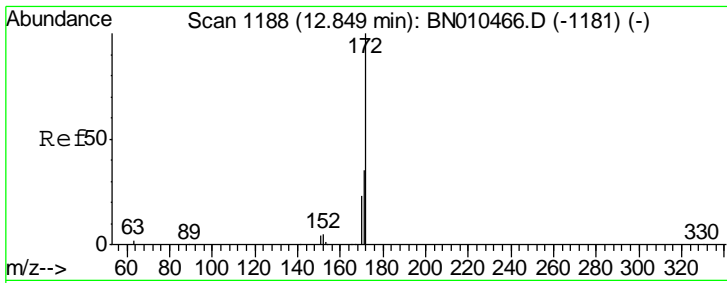
Tgt Ion	Resp	Lower	Upper
164	100		
162	103.2	80.6	121.0
160	48.6	36.5	54.7



#14  
 2,4,6-Tribromophenol  
 Concen: 0.326 ng  
 RT: 15.72 min Scan# 1446  
 Delta R.T. -0.00 min  
 Lab File: BN010592.D  
 Acq: 24 Apr 2020 17:13

Tgt Ion	Resp	Lower	Upper
330	100		
332	0.0	0.0	0.0
141	36.6	28.1	42.1

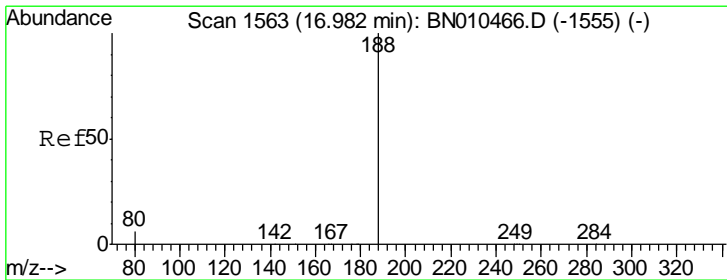
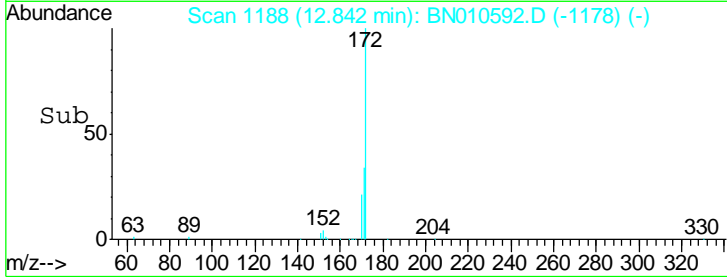
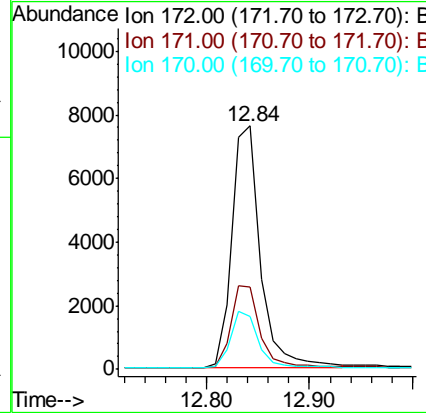
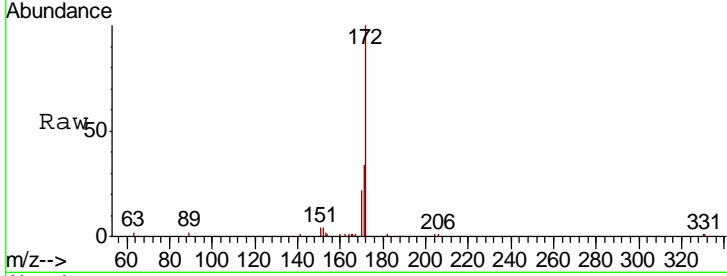




#15  
 2-Fluorobiphenyl  
 Concen: 0.477 ng  
 RT: 12.84 min Scan# 1188  
 Delta R.T. 0.01 min  
 Lab File: BN010592.D  
 Acq: 24 Apr 2020 17:13

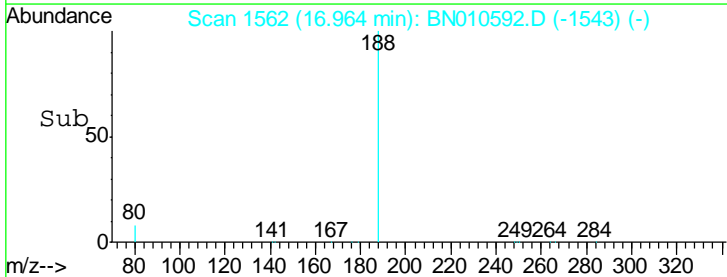
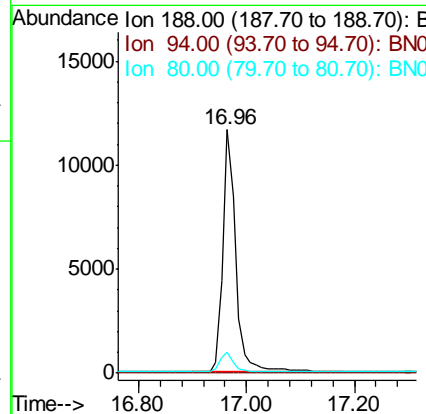
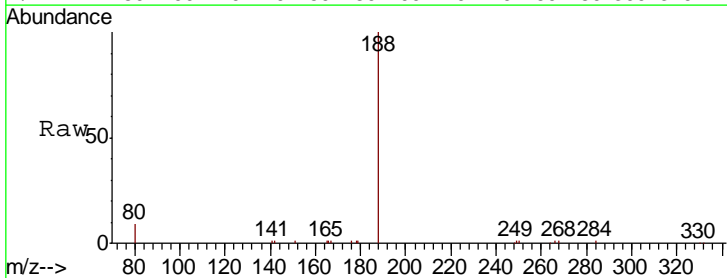
Instrument :  
 BNA\_N  
 ClientSampleId :  
 FB-GW-2020-04-16

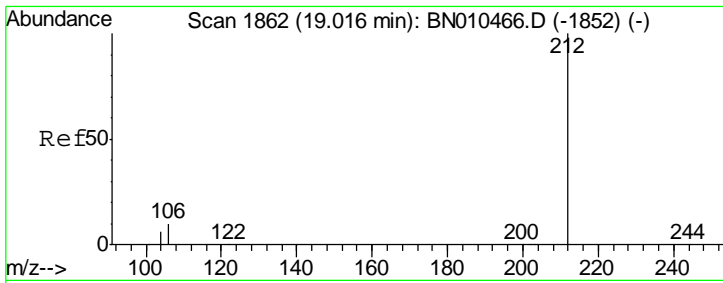
Tgt Ion	Resp	Lower	Upper
172	14611		
171	34.0	28.2	42.2
170	21.7	18.4	27.6



#19  
 Phenanthrene-d10  
 Concen: 0.400 ng  
 RT: 16.96 min Scan# 1562  
 Delta R.T. -0.00 min  
 Lab File: BN010592.D  
 Acq: 24 Apr 2020 17:13

Tgt Ion	Resp	Lower	Upper
188	19532		
94	0.0	0.0	0.0
80	8.7	5.0	7.6#

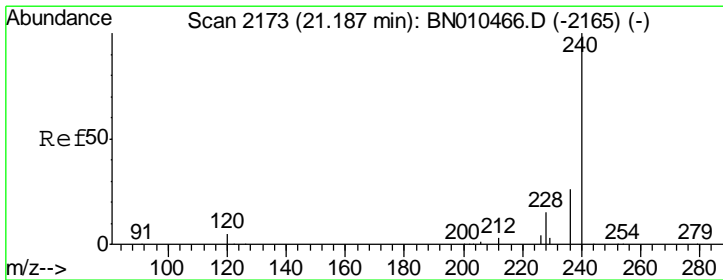
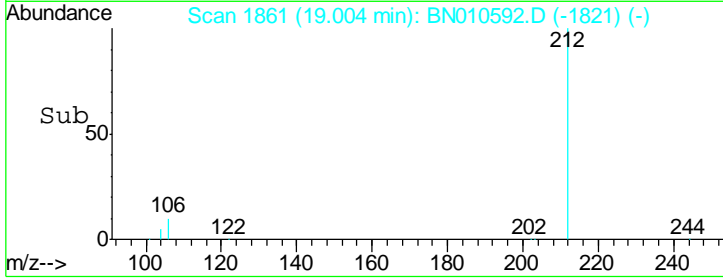
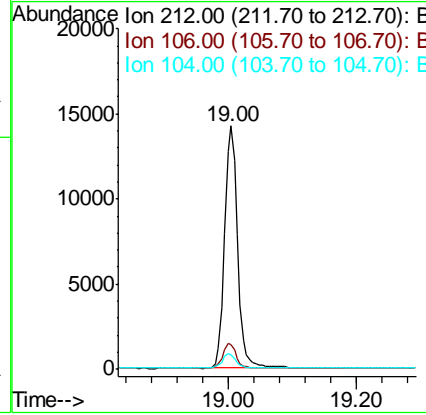
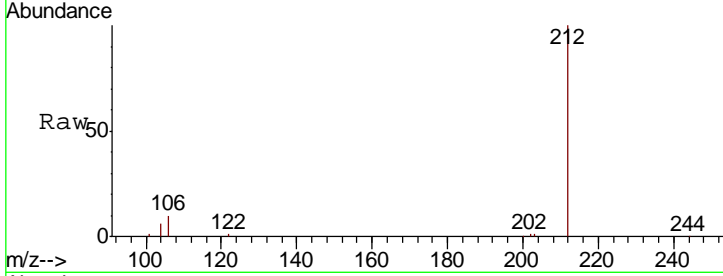




#25  
 Fluoranthene-d10  
 Concen: 0.348 ng  
 RT: 19.00 min Scan# 1861  
 Delta R.T. -0.00 min  
 Lab File: BN010592.D  
 Acq: 24 Apr 2020 17:13

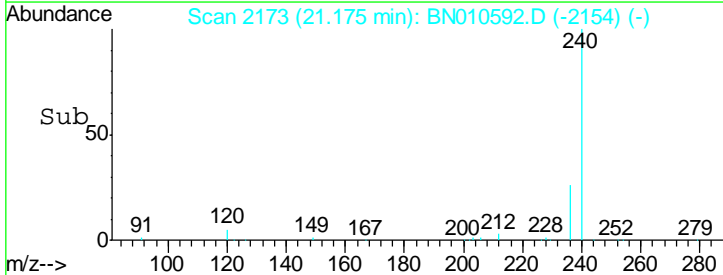
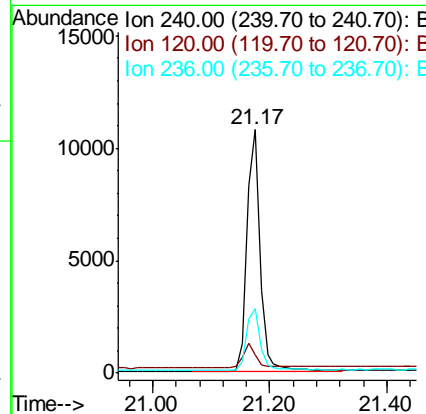
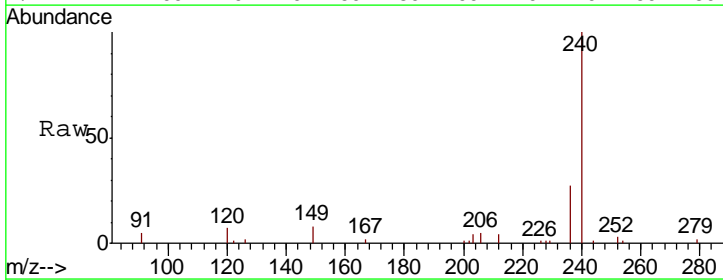
Instrument :  
 BNA\_N  
 ClientSampled :  
 FB-GW-2020-04-16

Tgt Ion	Resp	Lower	Upper
212	20594		
106	10.3	7.8	11.6
104	5.9	4.5	6.7

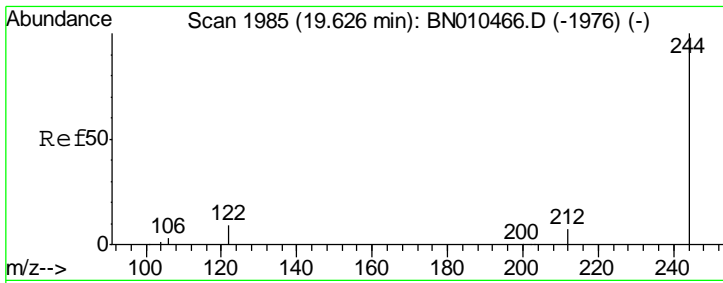


#27  
 Chrysene-d12  
 Concen: 0.400 ng  
 RT: 21.17 min Scan# 2173  
 Delta R.T. -0.00 min  
 Lab File: BN010592.D  
 Acq: 24 Apr 2020 17:13

Tgt Ion	Resp	Lower	Upper
240	16587		
120	7.4	4.8	7.2#
236	26.5	21.4	32.0



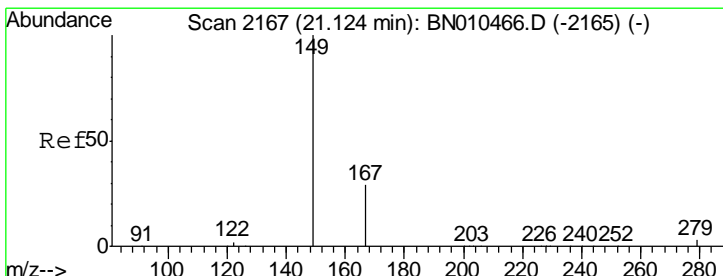
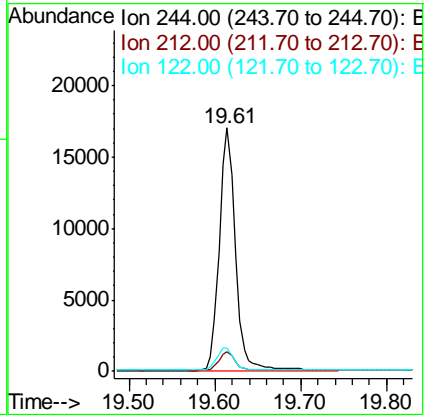
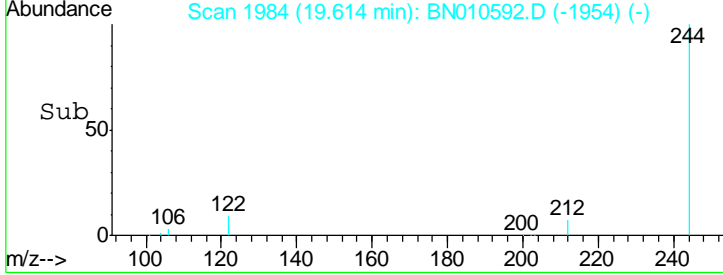
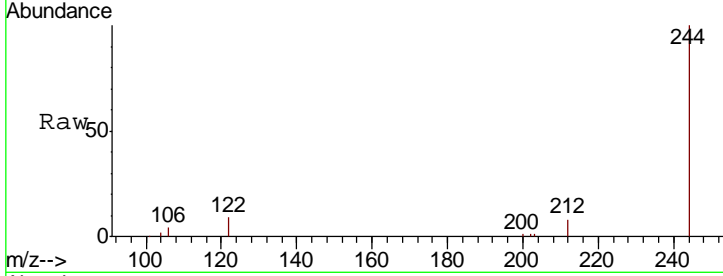




#29  
 Terphenyl-d14  
 Concen: 0.586 ng  
 RT: 19.61 min Scan# 1984  
 Delta R.T. -0.00 min  
 Lab File: BN010592.D  
 Acq: 24 Apr 2020 17:13

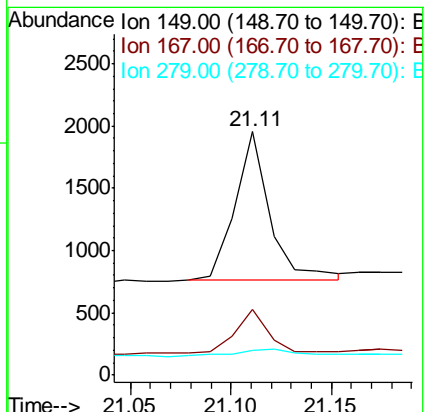
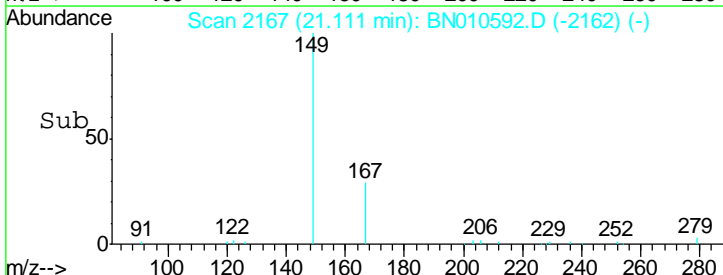
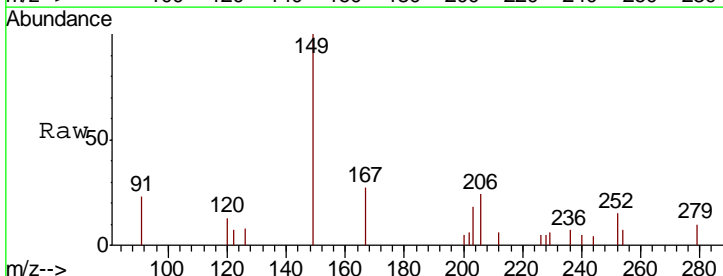
Instrument :  
 BNA\_N  
 ClientSampleId :  
 FB-GW-2020-04-16

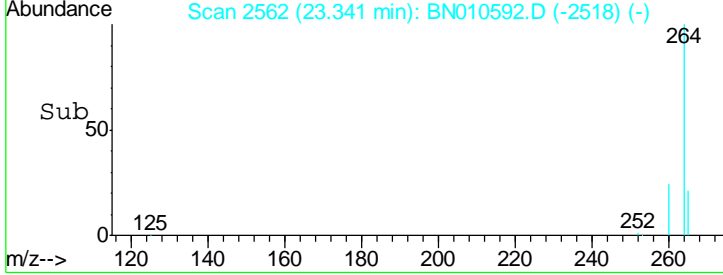
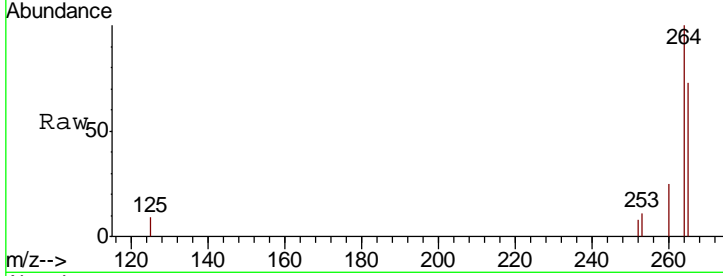
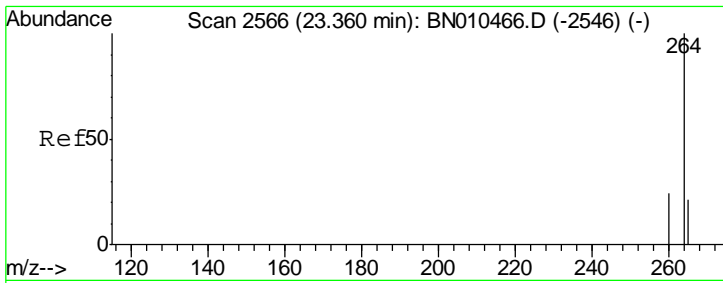
Tgt Ion	Resp	Lower	Upper
244	22261		
212	7.9	6.2	9.4
122	9.4	7.8	11.8



#32  
 Bis(2-ethylhexyl)phthalate  
 Concen: 0.052 ng  
 RT: 21.11 min Scan# 2167  
 Delta R.T. -0.00 min  
 Lab File: BN010592.D  
 Acq: 24 Apr 2020 17:13

Tgt Ion	Resp	Lower	Upper
149	1454		
167	26.0	23.4	35.0
279	5.8	4.0	6.0





#34  
 Perylene-d12  
 Concen: 0.400 ng  
 RT: 23.34 min Scan# 2562  
 Delta R.T. -0.00 min  
 Lab File: BN010592.D  
 Acq: 24 Apr 2020 17:13

**Instrument :**  
 BNA\_N  
**ClientSampleId :**  
 FB-GW-2020-04-16

Tot Ion: 264 Resp: 15118

Ion	Ratio	Lower	Upper
264	100		
260	24.7	19.8	29.8
265	72.5	42.3	63.5#

