

Data Path : Z:\SVOASRV\HPCHEM1\BNA N\DATA\BN042519\
 Data File : BN005285.D
 Acq On : 25 Apr 2019 18:24
 Operator : JU/SJ
 Sample : SSTDCCC020
 Misc :
 ALS Vial : 2 Sample Multiplier: 1

Instrument :
 BNA_N
 ClientSampled :

Quant Time: Apr 26 02:59:20 2019
 Quant Method : Z:\SVOASRV\HPCHEM1\BNA_N\METHODS\SOM-EPA-BN041919MA.M
 Quant Title : SVOA CALIBRATION
 QLast Update : Thu Apr 25 03:19:34 2019
 Response via : Initial Calibration

Internal Standards	R.T.	QIon	Response	Conc	Units	Dev(Min)
1) 1,4-Dichlorobenzene-d4	7.59	152	384761	20.00	ng/ul	0.00
18) Naphthalene-d8	10.36	136	1735707	20.00	ng/ul	0.00
35) Acenaphthene-d10	14.23	164	1116911	20.00	ng/ul	0.00
61) Phenanthrene-d10	16.98	188	2673172	20.00	ng/ul	0.00
77) Chrysene-d12	21.22	240	2724178	20.00	ng/ul	-0.01
85) Perylene-d12	23.42	264	3129248	20.00	ng/ul	-0.02

System Monitoring Compounds

3) 1,4-Dioxane-d8	3.22	96	56720	7.12	ng/uL	0.00
5) Phenol-d5	6.77	99	560606	18.55	ng/ul	0.00
7) Bis-(2-Chloroethyl)ether-d	6.94	67	336763	17.86	ng/ul	0.00
9) 2-Chlorophenol-d4	7.13	132	439106	18.99	ng/ul	0.00
13) 4-Methylphenol-d8	8.29	113	454149	19.23	ng/ul	0.00
19) Nitrobenzene-d5	8.73	128	212361	19.88	ng/ul	0.00
22) 2-Nitrophenol-d4	9.45	143	195534	18.05	ng/ul	0.00
26) 2,4-Dichlorophenol-d3	9.98	165	474258	19.10	ng/ul	0.00
29) 4-Chloroaniline-d4	10.49	131	506895	19.80	ng/ul	0.00
43) Dimethylphthalate-d6	13.65	166	1518402	18.73	ng/ul	0.00
46) Acenaphthylene-d8	13.92	160	1868409	18.76	ng/ul	0.00
51) 4-Nitrophenol-d4	14.43	143	258985	20.23	ng/ul	0.00
57) Fluorene-d10	15.23	176	1284448	18.88	ng/ul	0.00
62) 4,6-Dinitro-2-methylphenol	15.35	200	186674	15.53	ng/ul	0.00
70) Anthracene-d10	17.08	188	2066338	18.44	ng/ul	0.00
78) Pyrene-d10	19.39	212	2348141	16.85	ng/ul	0.00
89) Benzo(a)pyrene-d12	23.27	264	2520628	18.43	ng/ul	-0.03

Target Compounds

Target Compounds	R.T.	QIon	Response	Conc	Units	Ovalue
2) 1,4-Dioxane	3.25	88	62084	7.243	ng/uL	91
4) Benzaldehyde	6.75	77	404539	18.891	ng/ul	99
6) Phenol	6.80	94	575755	18.523	ng/ul	97
8) Bis(2-Chloroethyl)ether	7.03	93	460268	18.493	ng/ul	95
10) 2-Chlorophenol	7.16	128	448827	18.772	ng/ul	98
11) 2-Methylphenol	8.03	108	443742	19.052	ng/ul	96
12) 2,2'-oxybis(1-Chloropropan	8.12	45	720687	17.246	ng/ul	100
14) Acetophenone	8.40	105	738789	19.542	ng/ul	99
15) N-Nitroso-di-n-propylamine	8.39	70	385197	19.048	ng/ul	92
16) 4-Methylphenol	8.36	108	489247	19.450	ng/ul	98
17) Hexachloroethane	8.66	117	184183	17.740	ng/ul	94
20) Nitrobenzene	8.77	77	529365	18.005	ng/ul	96
21) Isophorone	9.30	82	1096382	18.834	ng/ul	98
23) 2-Nitrophenol	9.48	139	233003	18.986	ng/ul	96
24) 2,4-Dimethylphenol	9.55	107	547726	17.824	ng/ul	99
25) Bis(2-Chloroethoxy)methane	9.78	93	661383	18.079	ng/ul	97
27) 2,4-Dichlorophenol	10.00	162	464806	18.971	ng/ul	99
28) Naphthalene	10.40	128	1474056	18.268	ng/ul	99
30) 4-Chloroaniline	10.52	127	516551	19.809	ng/ul	99
31) Hexachlorobutadiene	10.70	225	307079	17.748	ng/ul	98
32) Caprolactam	11.26	113	120935	16.314	ng/ul	85
33) 4-Chloro-3-methylphenol	11.65	107	523036	18.959	ng/ul	95
34) 2-Methylnaphthalene	12.02	142	1110968	18.804	ng/ul	100

Data Path : Z:\SVOASRV\HPCHEM1\BNA N\DATA\BN042519\
 Data File : BN005285.D
 Acq On : 25 Apr 2019 18:24
 Operator : JU/SJ
 Sample : SSTDCCC020
 Misc :
 ALS Vial : 2 Sample Multiplier: 1

Instrument :
 BNA_N
 ClientSampleId :

Quant Time: Apr 26 02:59:20 2019
 Quant Method : Z:\SVOASRV\HPCHEM1\BNA_N\METHODS\SOM-EPA-BN041919MA.M
 Quant Title : SVOA CALIBRATION
 QLast Update : Thu Apr 25 03:19:34 2019
 Response via : Initial Calibration

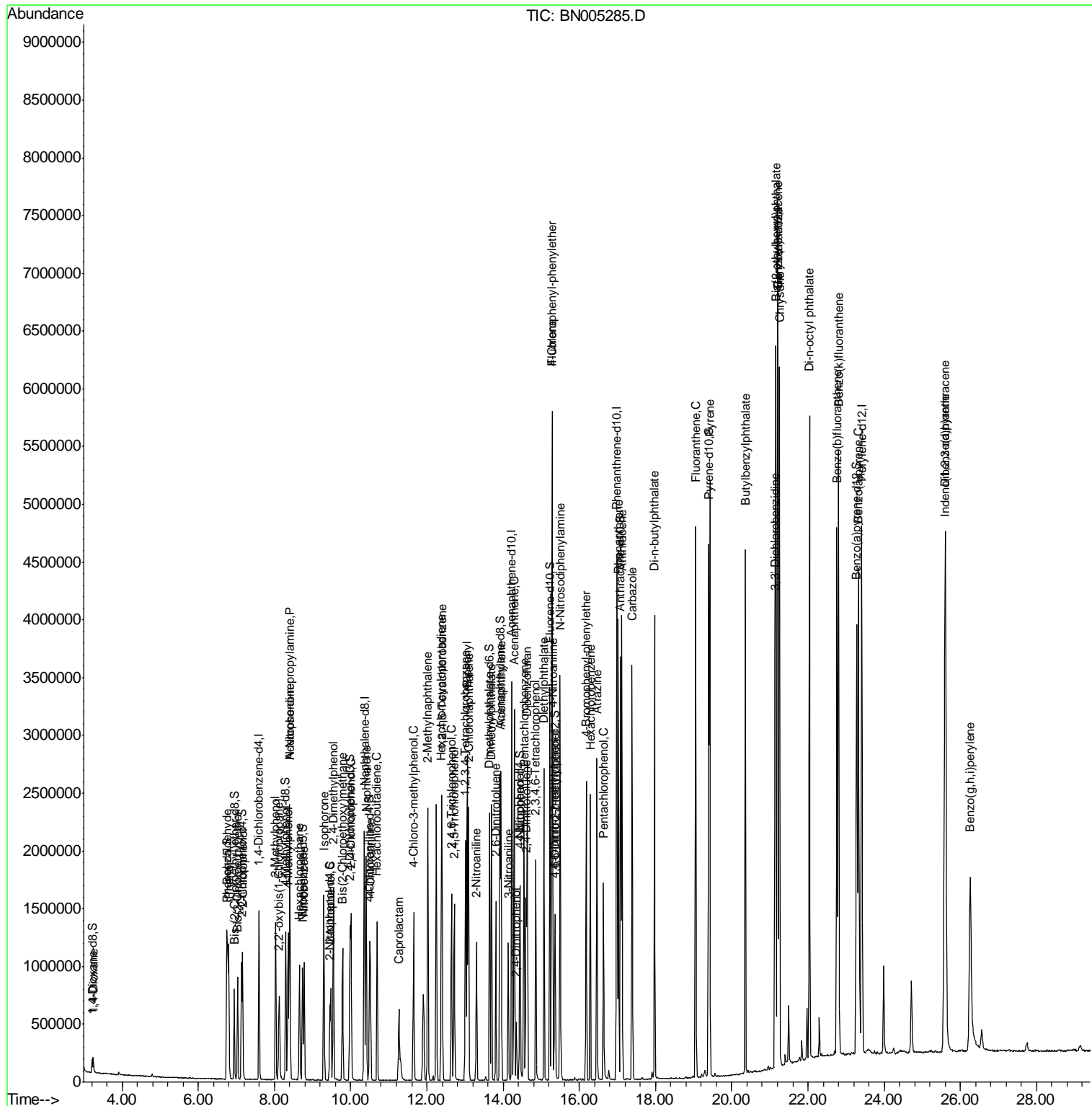
Internal Standards	R.T.	QIon	Response	Conc	Units	Dev(Min)
36) 1,2,4,5-Tetrachlorobenzene	12.40	216	615637	17.811	ng/ul	97
37) Hexachlorocyclopentadiene	12.38	237	430707	18.276	ng/ul	98
38) 2,4,6-Trichlorophenol	12.65	196	377303	18.102	ng/ul	96
39) 2,4,5-Trichlorophenol	12.72	196	416133	18.580	ng/ul	99
40) 1,1'-Biphenyl	13.06	154	1487784	17.878	ng/ul	99
41) 2-Chloronaphthalene	13.09	162	1147994	17.936	ng/ul	97
42) 2-Nitroaniline	13.30	65	318061	18.736	ng/ul	92
44) Dimethylphthalate	13.69	163	1499076	18.556	ng/ul	100
45) 2,6-Dinitrotoluene	13.81	165	282325	20.239	ng/ul	93
47) Acenaphthylene	13.95	152	1800419	18.397	ng/ul	99
48) 3-Nitroaniline	14.13	138	269954	20.816	ng/ul	91
49) Acenaphthene	14.29	153	1224370	18.326	ng/ul	99
50) 2,4-Dinitrophenol	14.35	184	95458	14.048	ng/ul	89
52) 4-Nitrophenol	14.45	109	209311	18.012	ng/ul	86
53) Dibenzofuran	14.63	168	1765731	18.356	ng/ul	97
54) 2,4-Dinitrotoluene	14.60	165	436028	21.682	ng/ul	94
55) 2,3,4,6-Tetrachlorophenol	14.86	232	356612	19.139	ng/ul	98
56) Diethylphthalate	15.07	149	1514524	18.696	ng/ul	98
58) Fluorene	15.28	166	1403238	18.695	ng/ul	99
59) 4-Chlorophenyl-phenylether	15.29	204	730945	18.358	ng/ul	99
60) 4-Nitroaniline	15.30	138	345479	21.369	ng/ul	93
63) 4,6-Dinitro-2-methylphenol	15.37	198	218342	17.063	ng/ul	93
64) N-Nitrosodiphenylamine	15.50	169	1269914	17.357	ng/ul	99
65) 4-Bromophenyl-phenylether	16.18	248	470856	17.484	ng/ul	97
66) Hexachlorobenzene	16.29	284	503394	17.554	ng/ul	96
67) Atrazine	16.46	200	494762	18.165	ng/ul	98
68) Pentachlorophenol	16.63	266	283968	16.912	ng/ul	99
69) Phenanthrene	17.02	178	2372833	18.226	ng/ul	99
71) Anthracene	17.12	178	2436824	18.374	ng/ul	99
72) 1,2,3,4-Tetrachlorobenzene	13.02	216	647709	16.589	ng/uL	100
73) Pentachlorobenzene	14.55	250	586978	16.703	ng/uL	99
74) Carbazole	17.39	167	2193771	19.256	ng/ul	99
75) Di-n-butylphthalate	17.97	149	2696835	18.867	ng/ul	99
76) Fluoranthene	19.06	202	2911024	20.159	ng/ul	99
79) Pyrene	19.42	202	2984687	17.016	ng/ul	98
80) Butylbenzylphthalate	20.36	149	1267504	18.252	ng/ul	95
81) 3,3'-Dichlorobenzidine	21.14	252	1029038	18.906	ng/ul	99
82) Benzo(a)anthracene	21.20	228	3127727	18.456	ng/ul	99
83) Bis(2-ethylhexyl)phthalate	21.16	149	1982374	18.539	ng/ul	97
84) Chrysene	21.25	228	2890125	18.375	ng/ul	99
86) Di-n-octyl phthalate	22.04	149	3454339	18.024	ng/ul	100
87) Benzo(b)fluoranthene	22.76	252	3102202	17.636	ng/ul	99
88) Benzo(k)fluoranthene	22.80	252	3111411	18.520	ng/ul	100
90) Benzo(a)pyrene	23.32	252	3027727	18.312	ng/ul	99
91) Indeno(1,2,3-cd)pyrene	25.59	276	3465773	18.959	ng/ul	99
92) Dibenzo(a,h)anthracene	25.61	278	2941544	18.961	ng/ul	99
93) Benzo(g,h,i)perylene	26.26	276	2517227	16.654	ng/ul	98

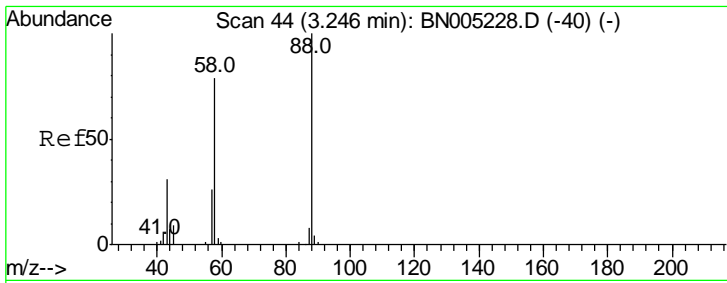
(#) = qualifier out of range (m) = manual integration (+) = signals summed

Data Path : Z:\SVOASRV\HPCHEM1\BNA N\DATA\BN042519\
 Data File : BN005285.D
 Acq On : 25 Apr 2019 18:24
 Operator : JU/SJ
 Sample : SSTDCCC020
 Misc :
 ALS Vial : 2 Sample Multiplier: 1

Instrument :
 BNA_N
 Client Sampled :

Quant Time: Apr 26 02:59:20 2019
 Quant Method : Z:\SVOASRV\HPCHEM1\BNA_N\METHODS\SOM-EPA-BN041919MA.M
 Quant Title : SVOA CALIBRATION
 QLast Update : Thu Apr 25 03:19:34 2019
 Response via : Initial Calibration

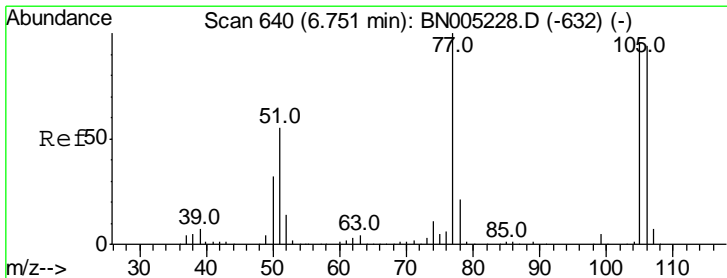
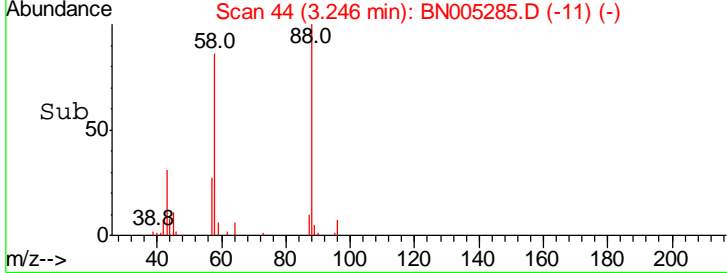
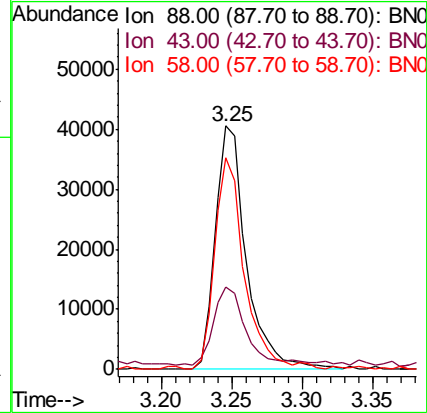
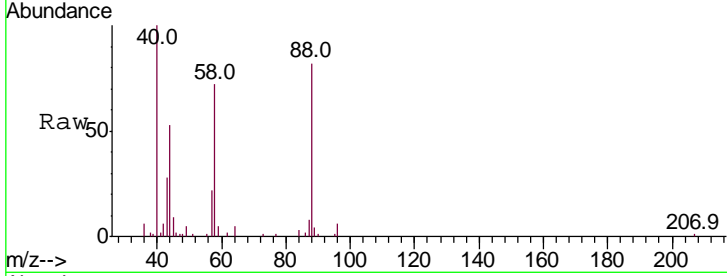




#2
 1,4-Dioxane
 Concen: 7.243 ng/uL
 RT: 3.25 min Scan# 44
 Delta R.T. -0.01 min
 Lab File: BN005285.D
 Acq: 25 Apr 2019 18:24

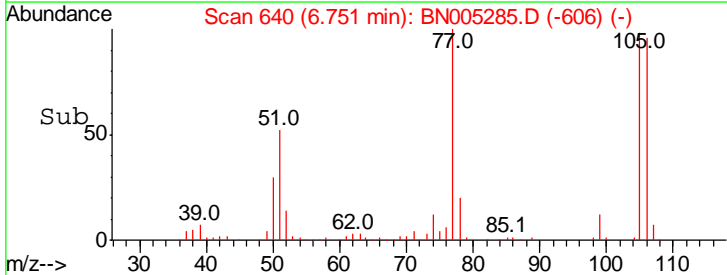
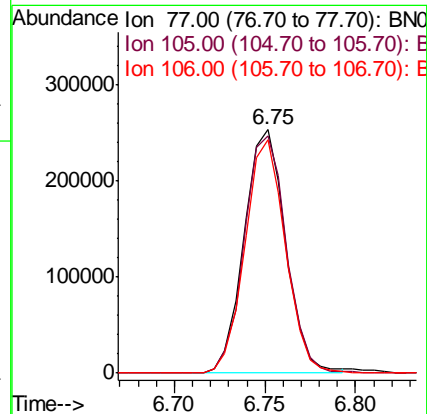
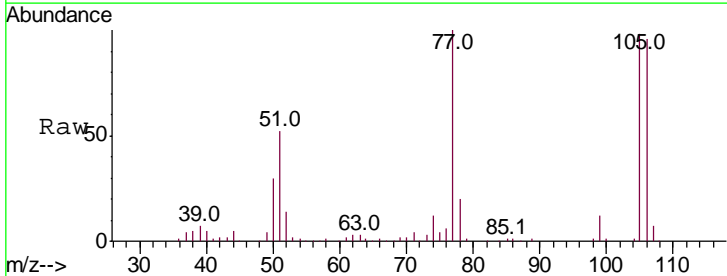
Instrument :
 BNA_N
 ClientSampled :

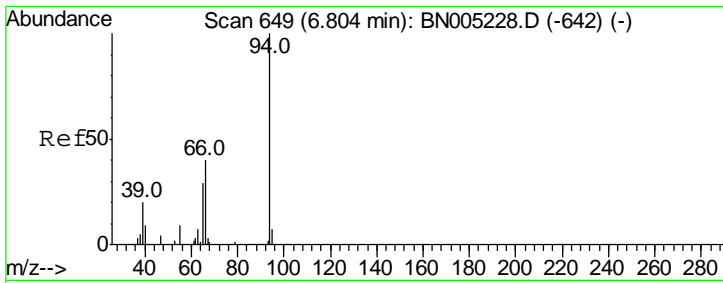
Tgt Ion	Resp	Lower	Upper
88	62084		
88	100		
43	34.0	25.3	37.9
58	87.1	62.3	93.5



#4
 Benzaldehyde
 Concen: 18.891 ng/uL
 RT: 6.75 min Scan# 640
 Delta R.T. -0.00 min
 Lab File: BN005285.D
 Acq: 25 Apr 2019 18:24

Tgt Ion	Resp	Lower	Upper
77	404539		
77	100		
105	97.6	77.4	116.2
106	95.9	76.3	114.5

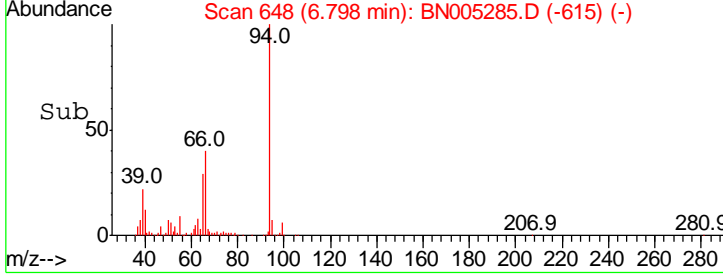
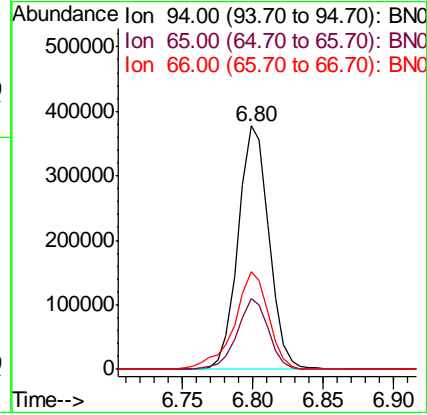
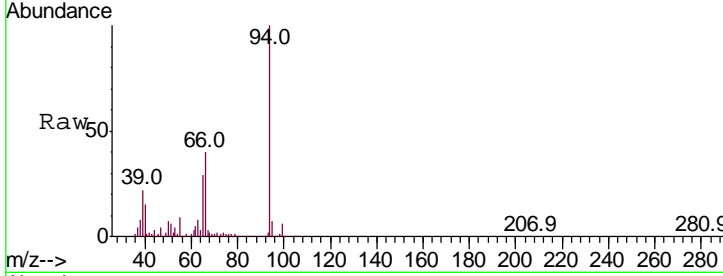




#6
 Phenol
 Concen: 18.523 ng/ul
 RT: 6.80 min Scan# 648
 Delta R.T. -0.01 min
 Lab File: BN005285.D
 Acq: 25 Apr 2019 18:24

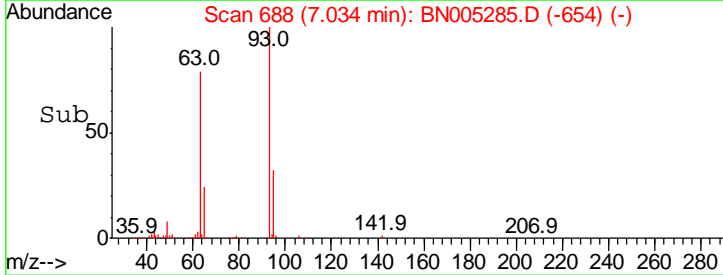
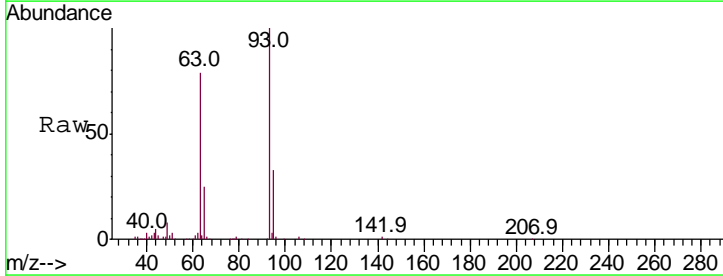
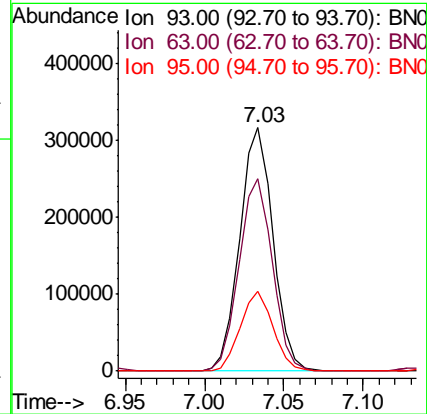
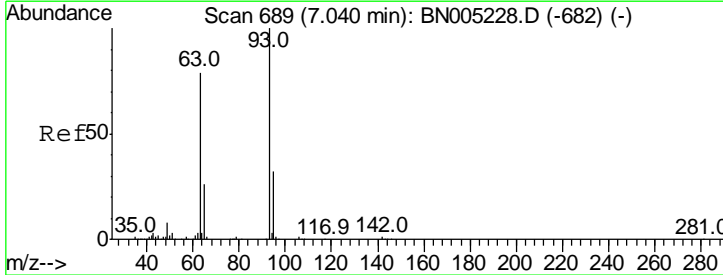
Instrument :
 BNA_N
 ClientSampled :

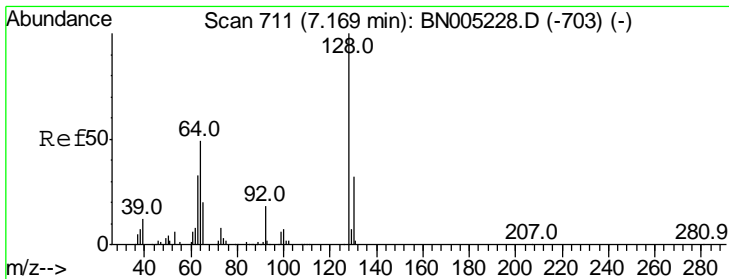
Tgt Ion	Resp	Lower	Upper
94	100		
65	29.0	24.2	36.4
66	40.1	33.8	50.6



#8
 Bis(2-Chloroethyl)ether
 Concen: 18.493 ng/ul
 RT: 7.03 min Scan# 688
 Delta R.T. -0.00 min
 Lab File: BN005285.D
 Acq: 25 Apr 2019 18:24

Tgt Ion	Resp	Lower	Upper
93	100		
63	78.8	67.1	100.7
95	32.6	26.9	40.3

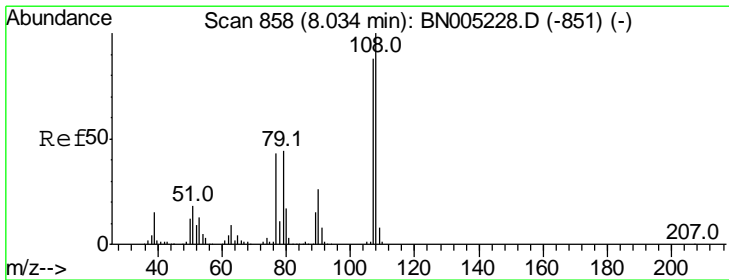
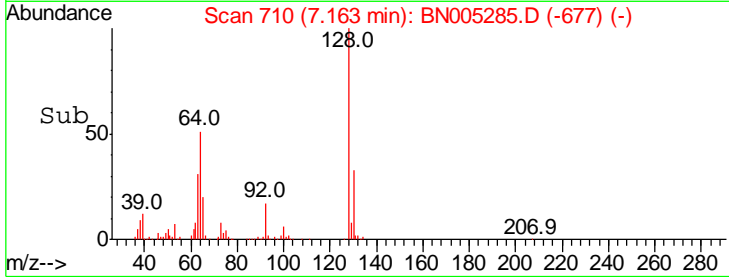
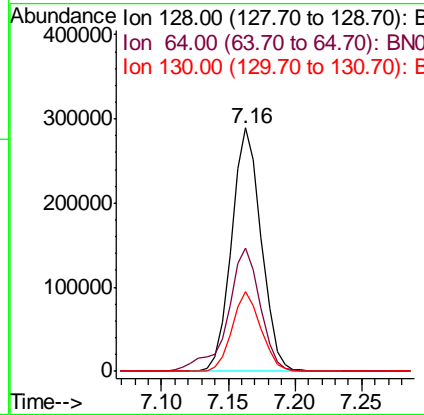
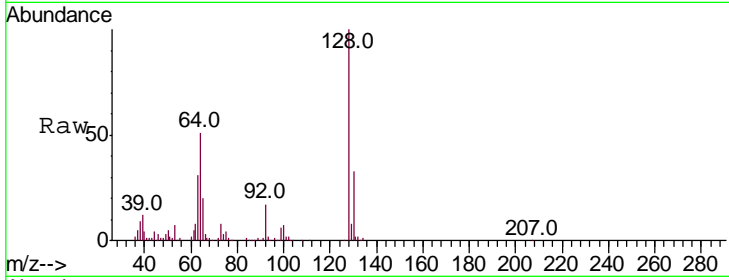




#10
 2-Chlorophenol
 Concen: 18.772 ng/ul
 RT: 7.16 min Scan# 710
 Delta R.T. -0.01 min
 Lab File: BN005285.D
 Acq: 25 Apr 2019 18:24

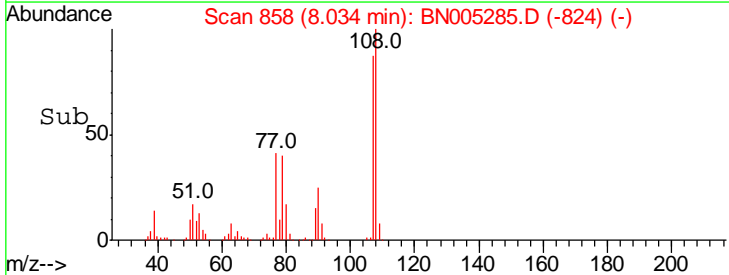
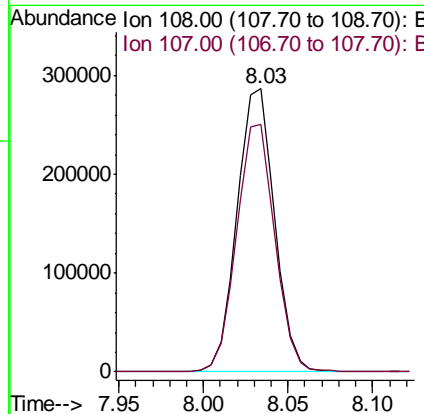
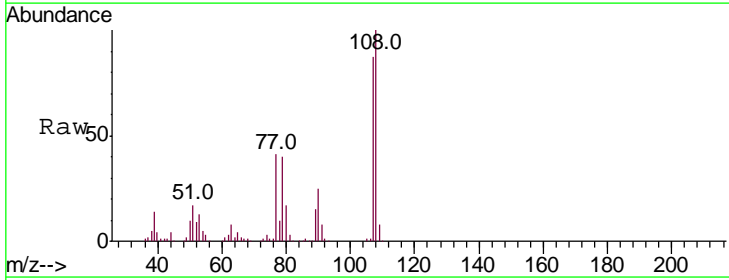
Instrument :
 BNA_N
 ClientSampled :

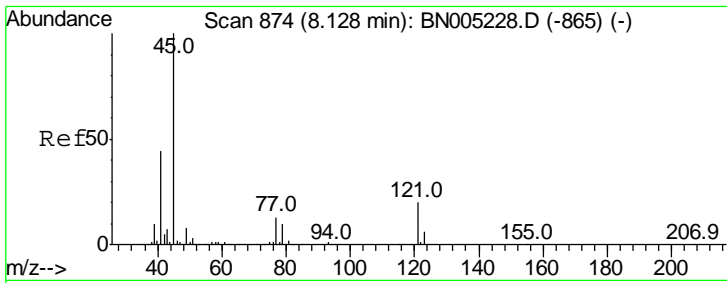
Tgt Ion	Resp	Lower	Upper
128	448827		
64	50.9	42.3	63.5
130	32.6	26.5	39.7



#11
 2-Methylphenol
 Concen: 19.052 ng/ul
 RT: 8.03 min Scan# 858
 Delta R.T. -0.00 min
 Lab File: BN005285.D
 Acq: 25 Apr 2019 18:24

Tgt Ion	Resp	Lower	Upper
108	443742		
107	87.4	72.9	109.3

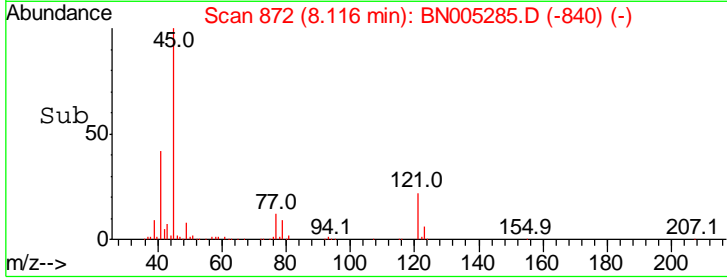
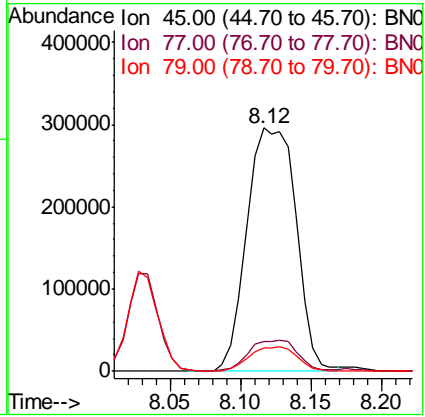
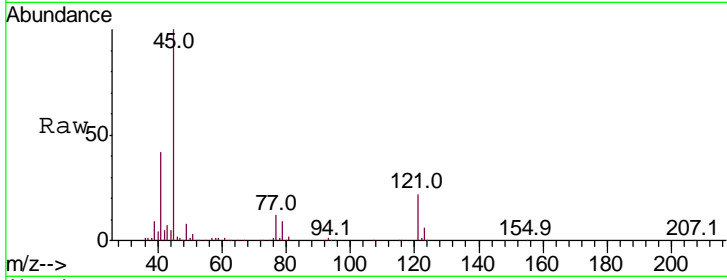




#12
 2,2'-oxybis(1-Chloropropane)
 Concen: 17.246 ng/ul
 RT: 8.12 min Scan# 872
 Delta R.T. -0.01 min
 Lab File: BN005285.D
 Acq: 25 Apr 2019 18:24

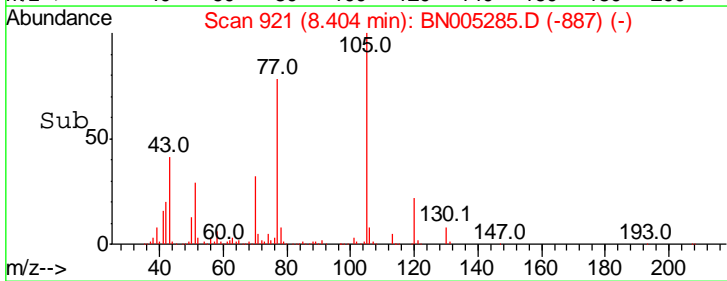
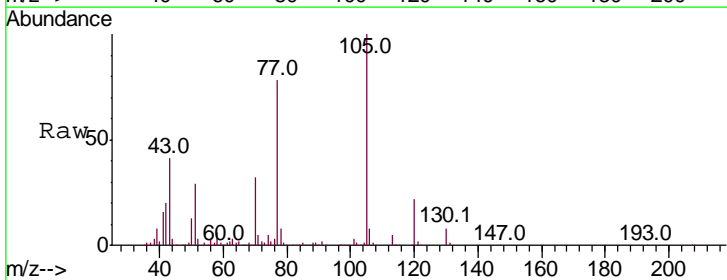
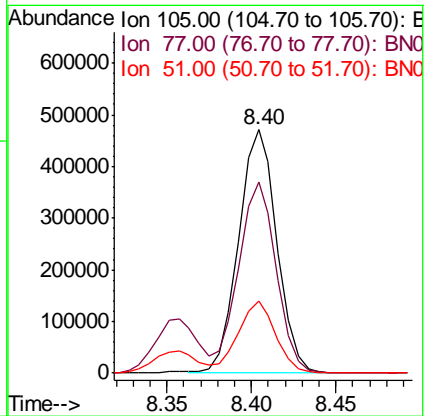
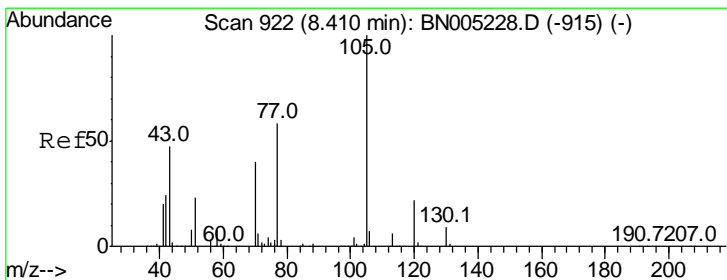
Instrument :
 BNA_N
 ClientSampled :

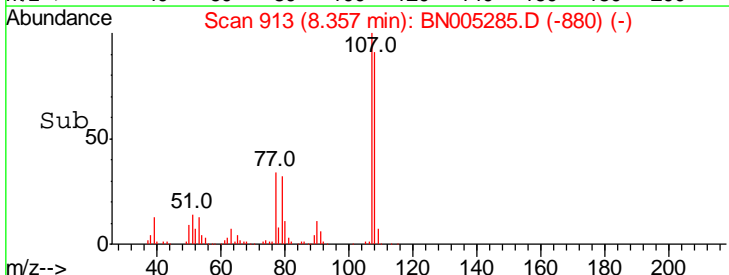
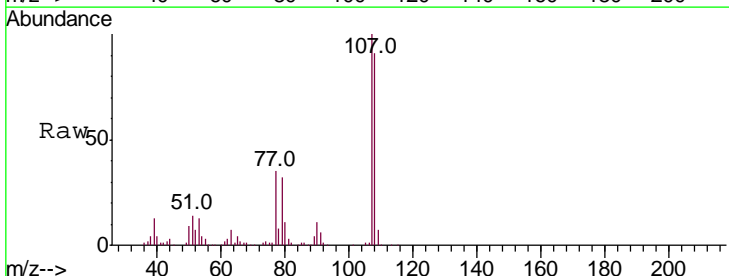
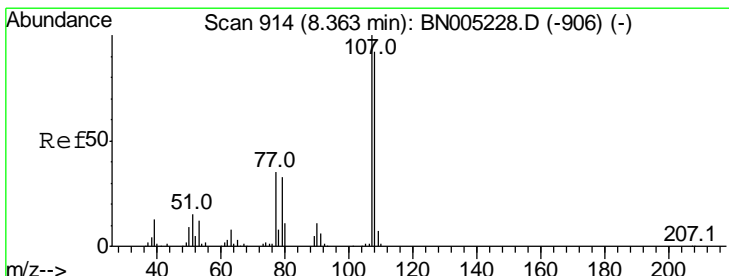
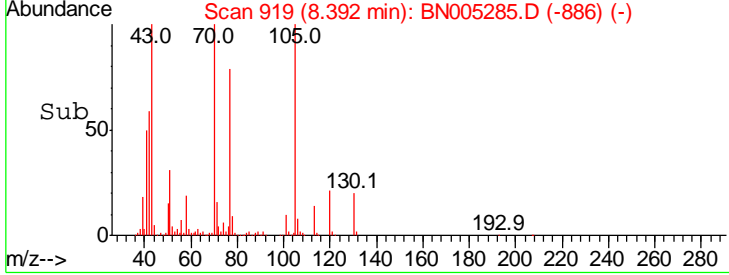
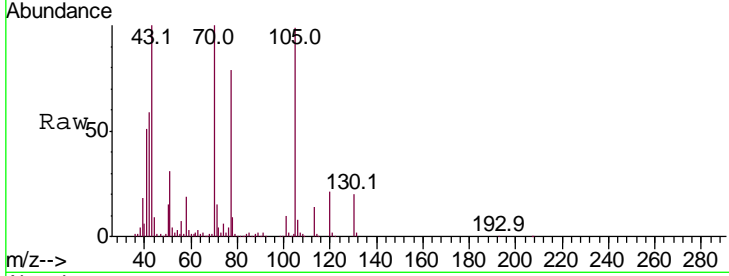
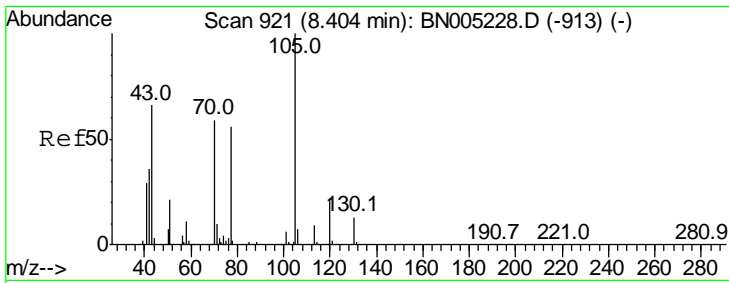
Tgt Ion	Resp	Lower	Upper
45	100		
77	12.0	9.8	14.6
79	9.4	7.4	11.0



#14
 Acetophenone
 Concen: 19.542 ng/ul
 RT: 8.40 min Scan# 921
 Delta R.T. -0.00 min
 Lab File: BN005285.D
 Acq: 25 Apr 2019 18:24

Tgt Ion	Resp	Lower	Upper
105	100		
77	78.4	63.4	95.0
51	29.4	24.2	36.4

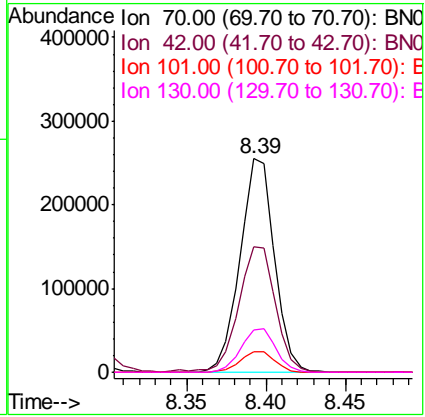




#15
 N-Nitroso-di-n-propylamine
 Concen: 19.048 ng/ul
 RT: 8.39 min Scan# 919
 Delta R.T. -0.01 min
 Lab File: BN005285.D
 Acq: 25 Apr 2019 18:24

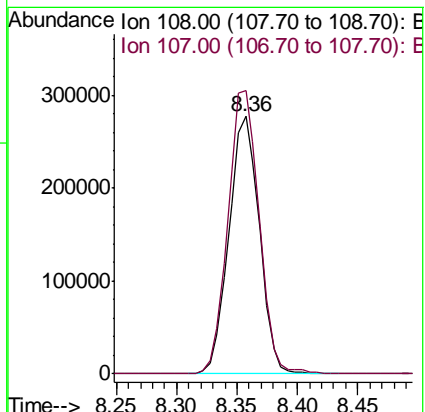
Instrument :
 BNA_N
 ClientSampled :

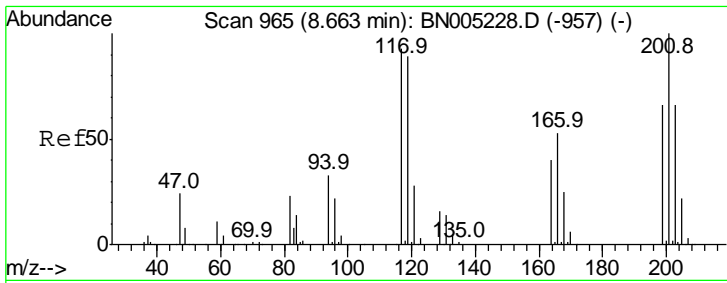
Tgt Ion	Resp	Lower	Upper
70	100		
42	59.0	53.8	80.8
101	9.6	7.7	11.5
130	20.0	15.0	22.4



#16
 4-Methylphenol
 Concen: 19.450 ng/ul
 RT: 8.36 min Scan# 913
 Delta R.T. -0.01 min
 Lab File: BN005285.D
 Acq: 25 Apr 2019 18:24

Tgt Ion	Resp	Lower	Upper
108	100		
107	109.9	86.1	129.1

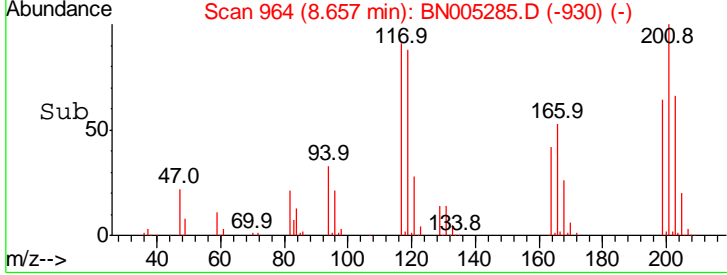
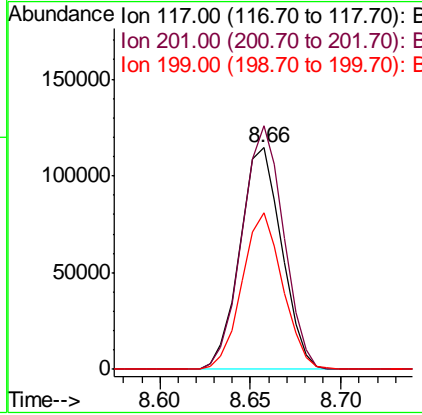
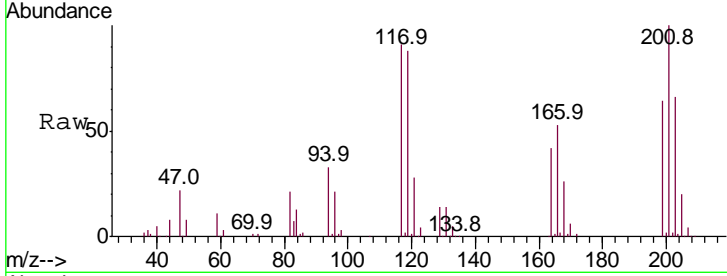




#17
 Hexachloroethane
 Concen: 17.740 ng/ul
 RT: 8.66 min Scan# 964
 Delta R.T. -0.00 min
 Lab File: BN005285.D
 Acq: 25 Apr 2019 18:24

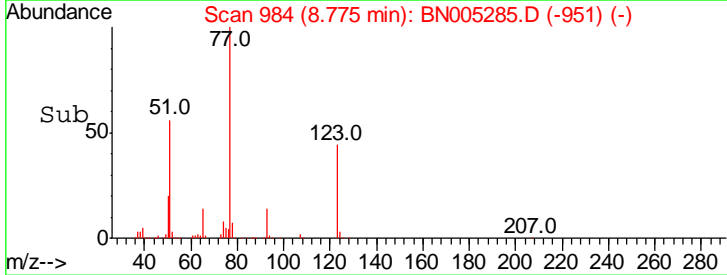
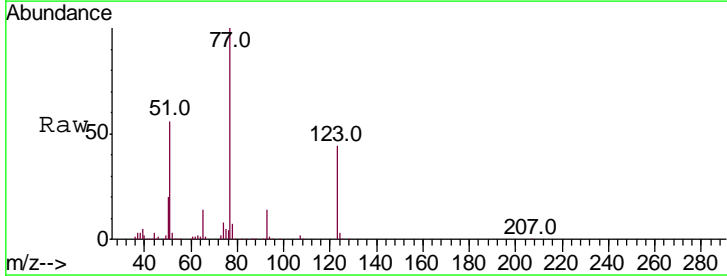
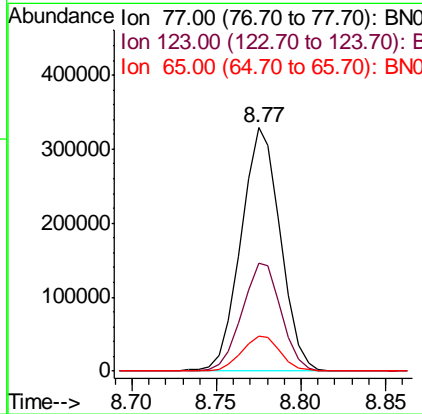
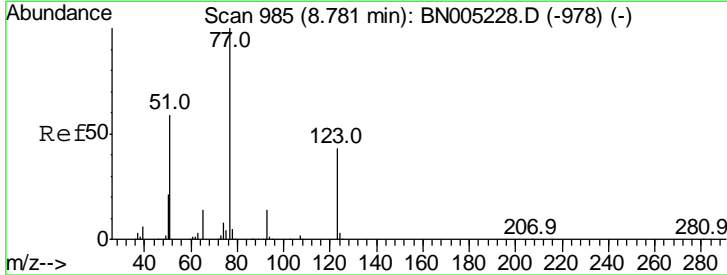
Instrument :
 BNA_N
 ClientSampled :

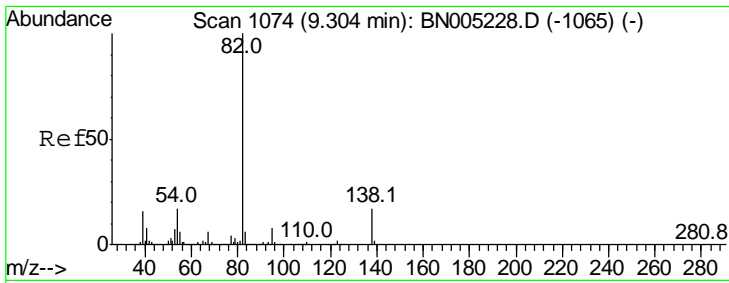
Tgt Ion	Resp	Lower	Upper
117	184183		
117	100		
201	109.8	84.1	126.1
199	70.7	51.2	76.8



#20
 Nitrobenzene
 Concen: 18.005 ng/ul
 RT: 8.77 min Scan# 984
 Delta R.T. -0.01 min
 Lab File: BN005285.D
 Acq: 25 Apr 2019 18:24

Tgt Ion	Resp	Lower	Upper
77	529365		
77	100		
123	44.3	32.6	49.0
65	14.2	11.6	17.4



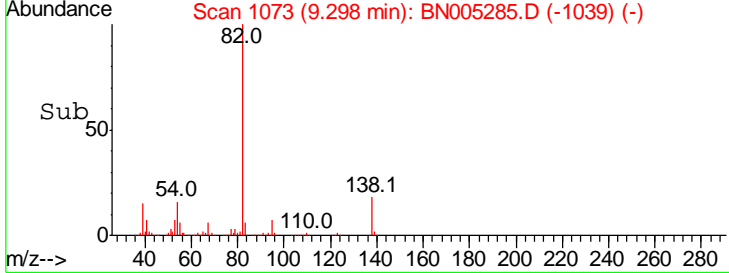
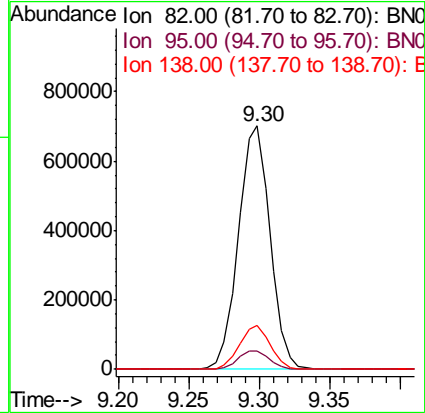
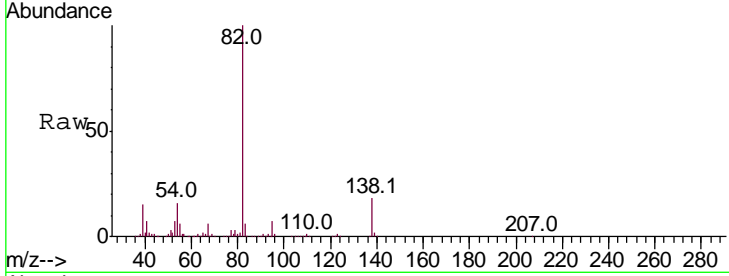


#21
 Isophorone
 Concen: 18.834 ng/ul
 RT: 9.30 min Scan# 1073
 Delta R.T. -0.00 min
 Lab File: BN005285.D
 Acq: 25 Apr 2019 18:24

Instrument :
 BNA_N
 ClientSampled :

Tgt Ion: 82 Resp: 1096382

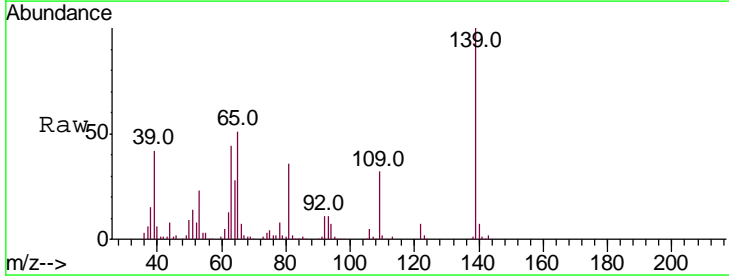
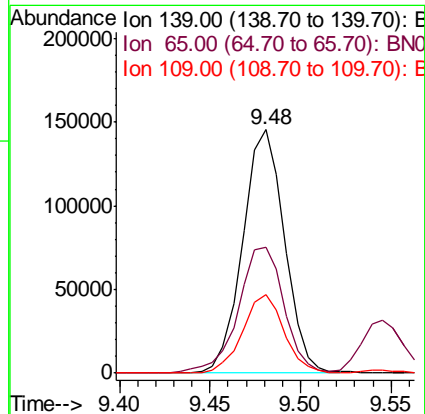
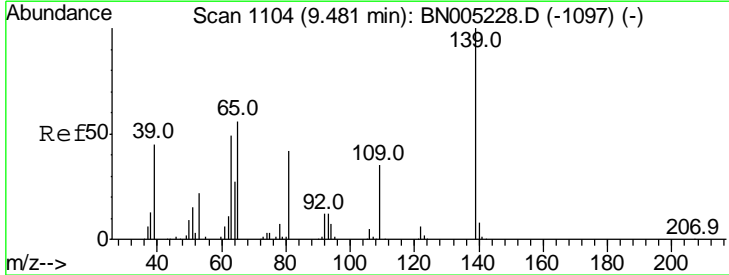
Ion	Ratio	Lower	Upper
82	100		
95	7.3	6.2	9.2
138	17.8	13.2	19.8

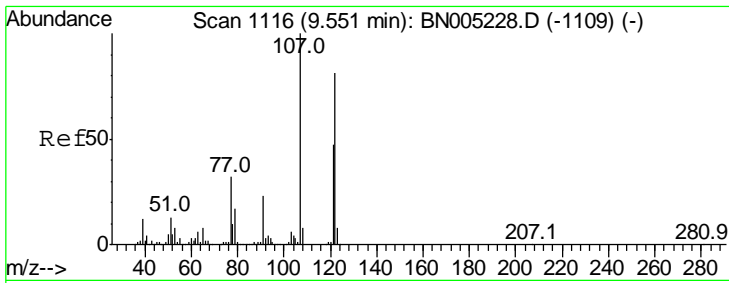


#23
 2-Nitrophenol
 Concen: 18.986 ng/ul
 RT: 9.48 min Scan# 1104
 Delta R.T. -0.01 min
 Lab File: BN005285.D
 Acq: 25 Apr 2019 18:24

Tgt Ion: 139 Resp: 233003

Ion	Ratio	Lower	Upper
139	100		
65	51.4	44.2	66.4
109	32.4	26.8	40.2

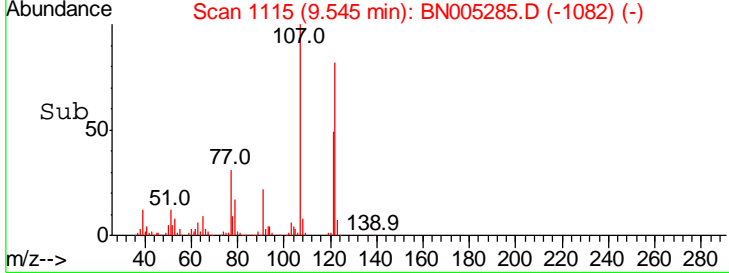
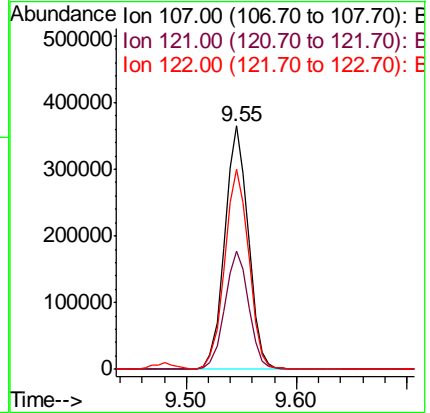
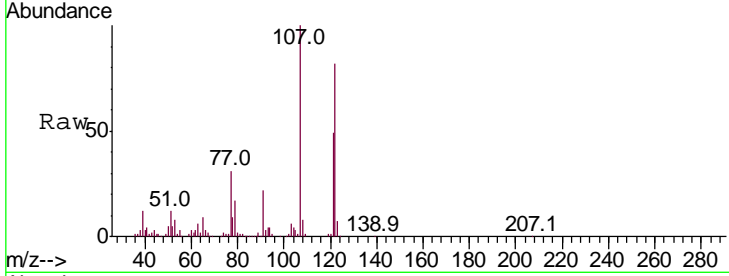




#24
 2,4-Dimethylphenol
 Concen: 17.824 ng/ul
 RT: 9.55 min Scan# 1115
 Delta R.T. -0.01 min
 Lab File: BN005285.D
 Acq: 25 Apr 2019 18:24

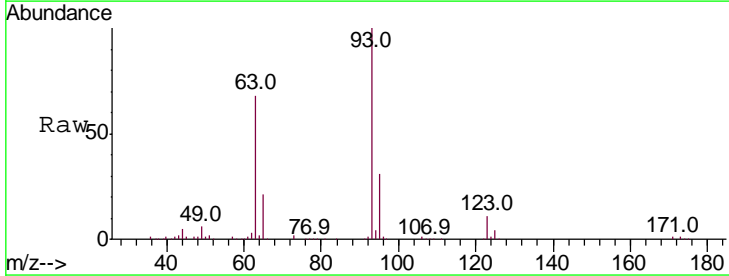
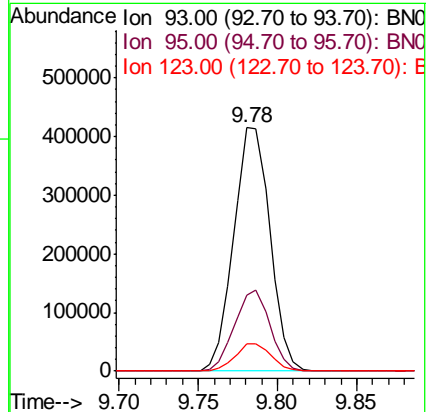
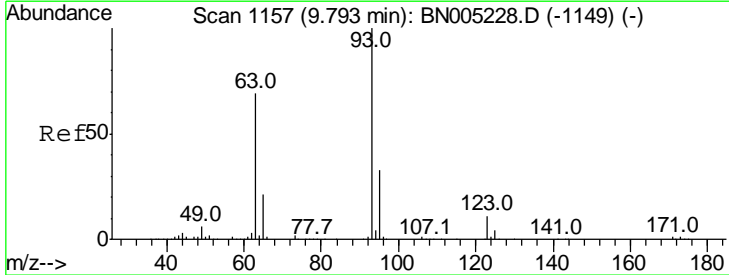
Instrument :
 BNA_N
 ClientSampled :

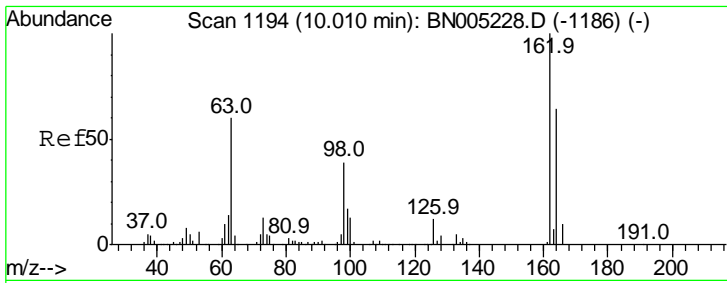
Tgt Ion	Resp	Lower	Upper
107	547726		
107	100		
121	48.5	37.8	56.8
122	82.0	65.0	97.4



#25
 Bis(2-Chloroethoxy)methane
 Concen: 18.079 ng/ul
 RT: 9.78 min Scan# 1155
 Delta R.T. -0.01 min
 Lab File: BN005285.D
 Acq: 25 Apr 2019 18:24

Tgt Ion	Resp	Lower	Upper
93	661383		
93	100		
95	31.2	26.6	39.8
123	11.0	8.9	13.3

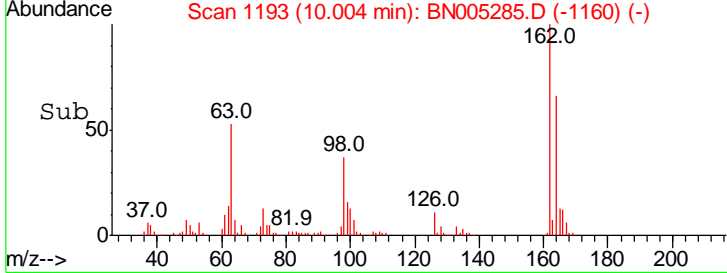
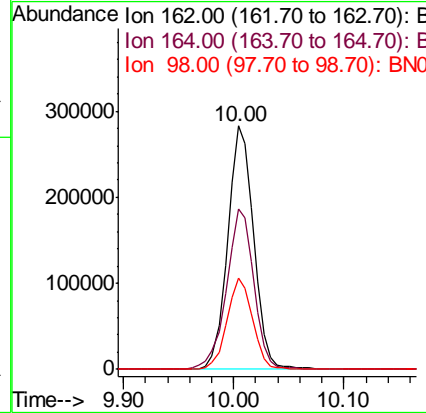
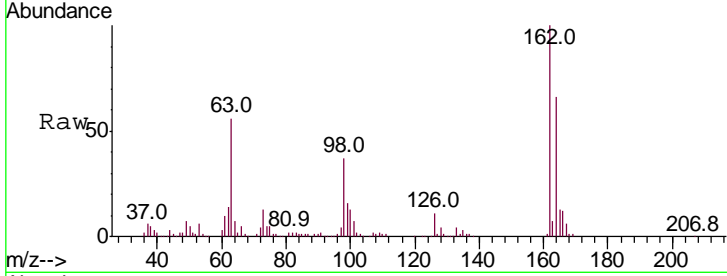




#27
 2,4-Dichlorophenol
 Concen: 18.971 ng/ul
 RT: 10.00 min Scan# 1193
 Delta R.T. -0.01 min
 Lab File: BN005285.D
 Acq: 25 Apr 2019 18:24

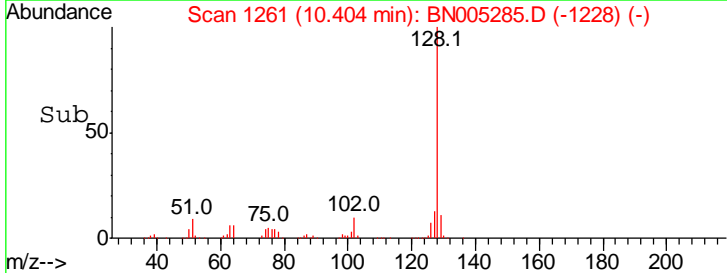
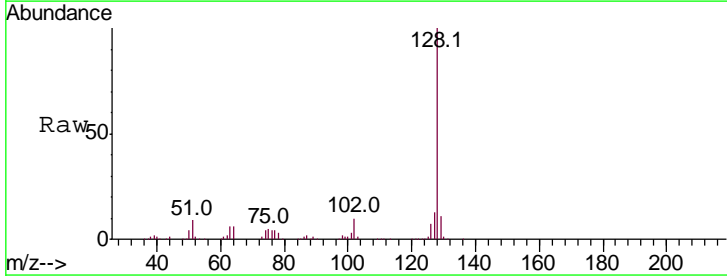
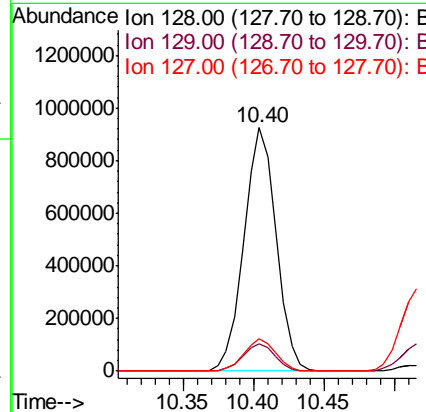
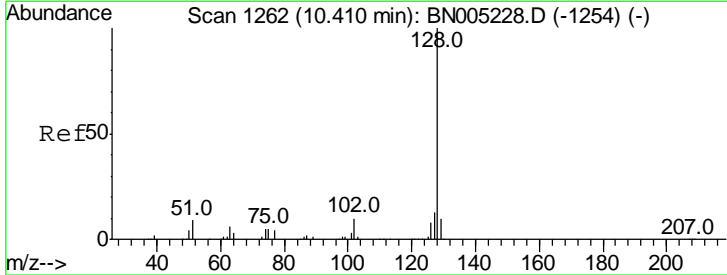
Instrument :
 BNA_N
 ClientSampled :

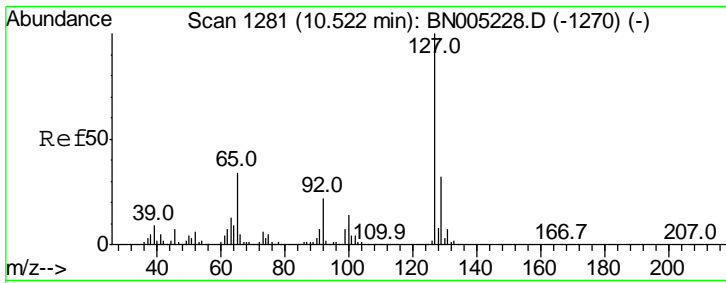
Tgt Ion	Resp	Lower	Upper
162	100		
164	65.9	52.6	79.0
98	37.4	30.8	46.2



#28
 Naphthalene
 Concen: 18.268 ng/ul
 RT: 10.40 min Scan# 1261
 Delta R.T. -0.01 min
 Lab File: BN005285.D
 Acq: 25 Apr 2019 18:24

Tgt Ion	Resp	Lower	Upper
128	100		
129	11.3	9.2	13.8
127	13.1	10.7	16.1

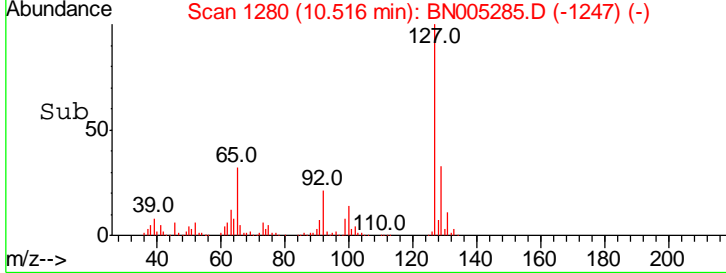
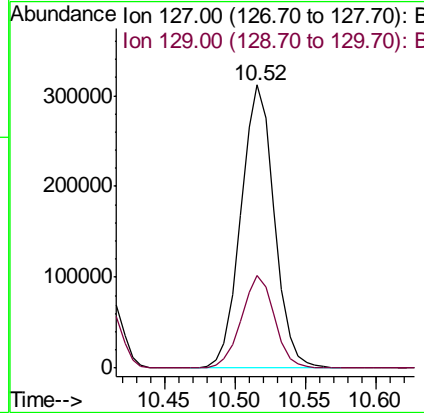
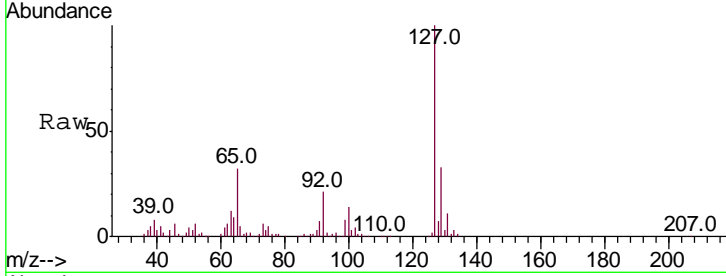




#30
 4-Chloroaniline
 Concen: 19.809 ng/ul
 RT: 10.52 min Scan# 1280
 Delta R.T. -0.01 min
 Lab File: BN005285.D
 Acq: 25 Apr 2019 18:24

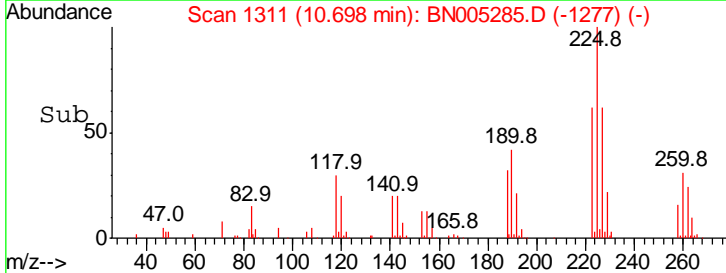
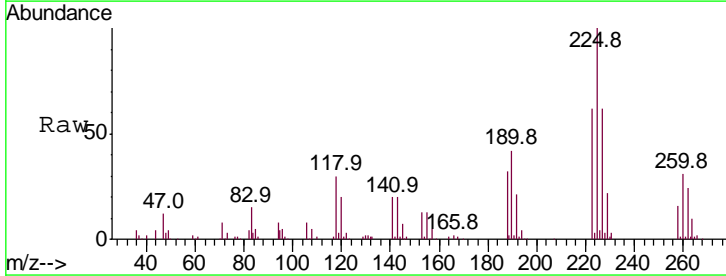
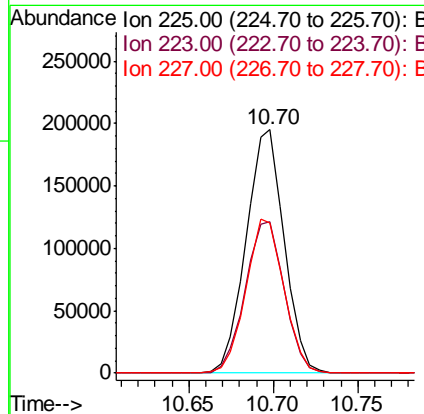
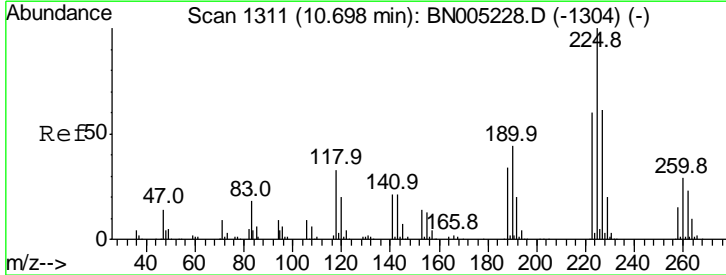
Instrument :
 BNA_N
 ClientSampled :

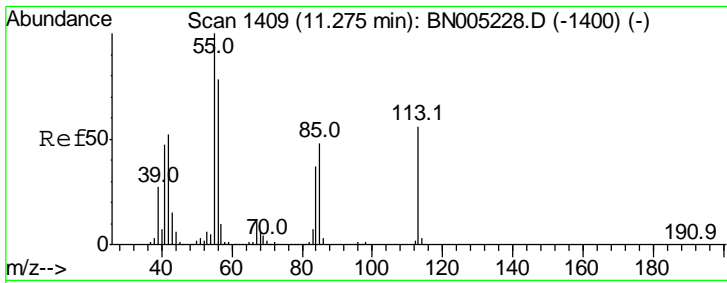
Tgt Ion	Resp	Lower	Upper
127	100		
129	32.8	25.8	38.6



#31
 Hexachlorobutadiene
 Concen: 17.748 ng/ul
 RT: 10.70 min Scan# 1311
 Delta R.T. -0.00 min
 Lab File: BN005285.D
 Acq: 25 Apr 2019 18:24

Tgt Ion	Resp	Lower	Upper
225	100		
223	62.1	48.5	72.7
227	61.9	51.0	76.6

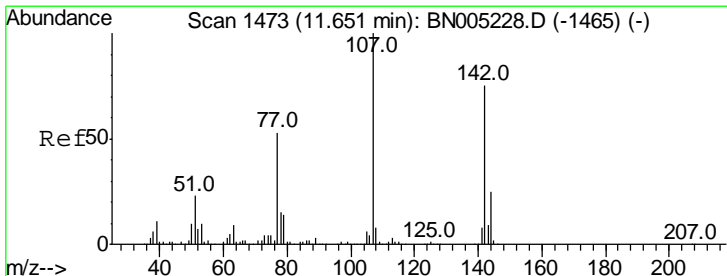
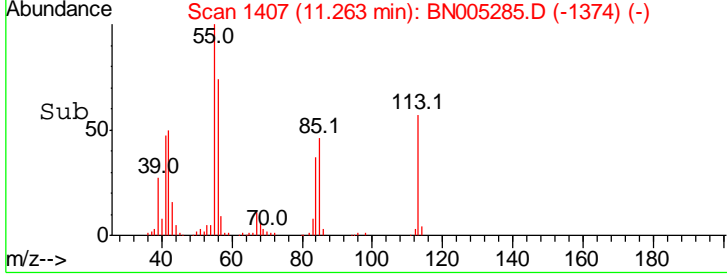
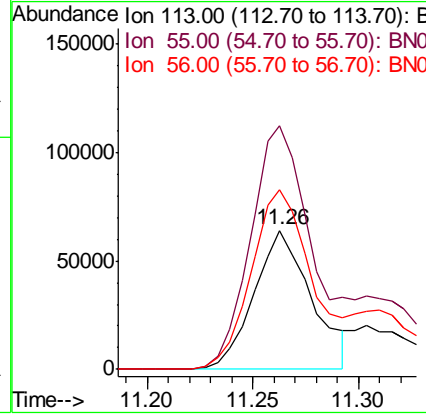
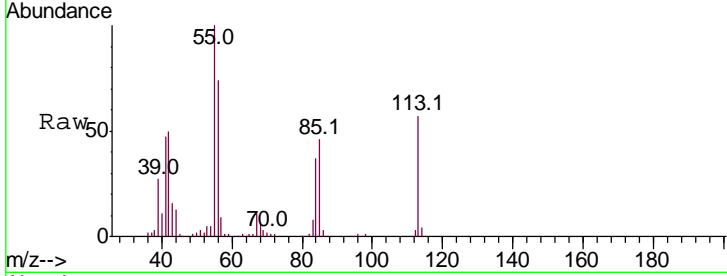




#32
 Caprolactam
 Concen: 16.314 ng/ul
 RT: 11.26 min Scan# 1407
 Delta R.T. -0.01 min
 Lab File: BN005285.D
 Acq: 25 Apr 2019 18:24

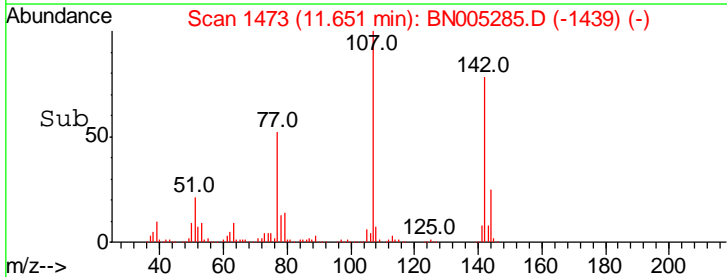
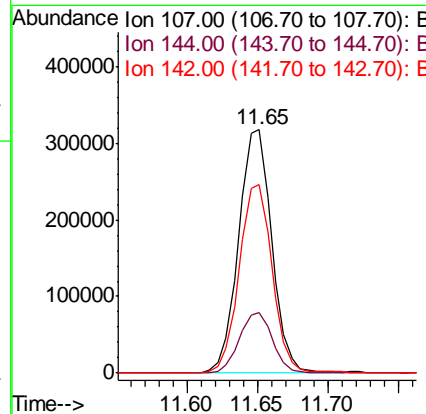
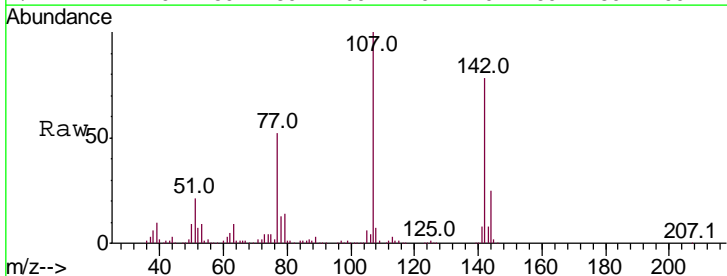
Instrument :
 BNA_N
 ClientSampled :

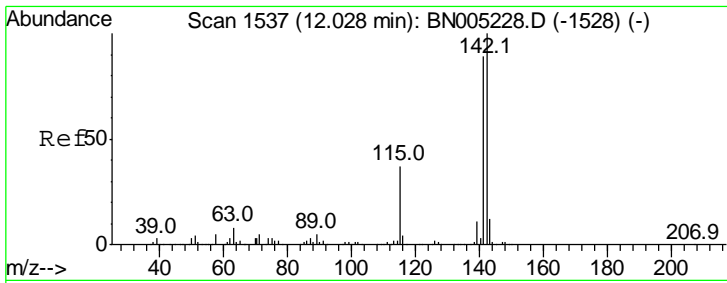
Tgt Ion	Resp	Lower	Upper
113	120935		
55	175.1	157.0	235.4
56	129.2	119.1	178.7



#33
 4-Chloro-3-methylphenol
 Concen: 18.959 ng/ul
 RT: 11.65 min Scan# 1473
 Delta R.T. -0.00 min
 Lab File: BN005285.D
 Acq: 25 Apr 2019 18:24

Tgt Ion	Resp	Lower	Upper
107	523036		
144	24.6	19.4	29.0
142	77.6	57.7	86.5



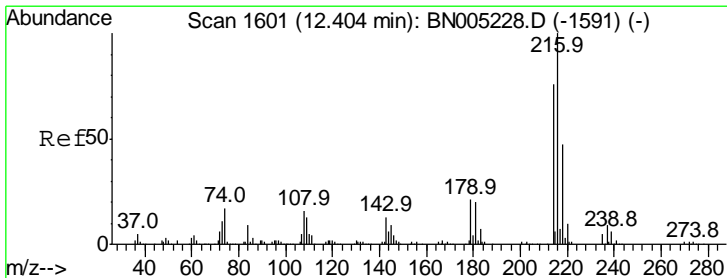
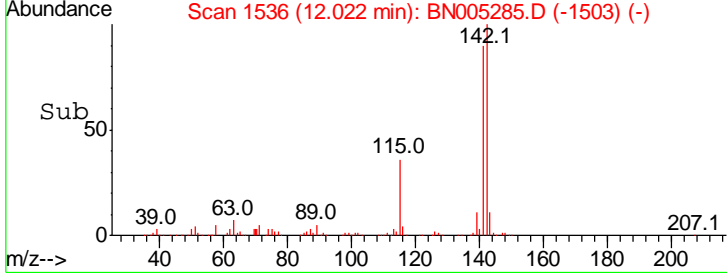
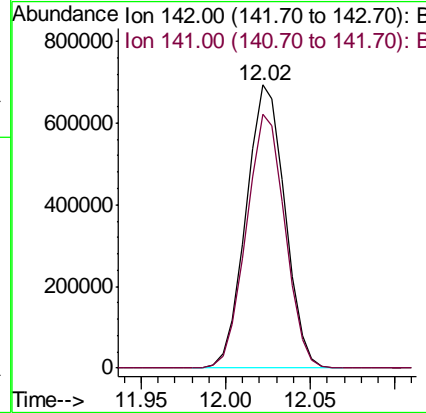
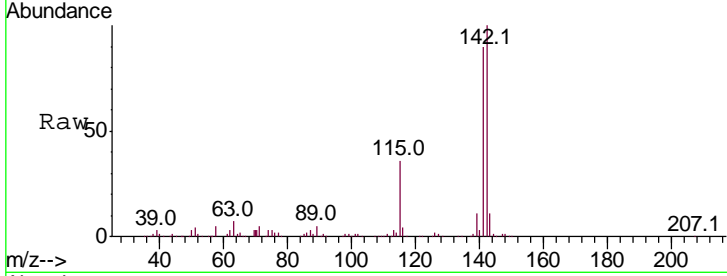


#34
 2-Methylnaphthalene
 Concen: 18.804 ng/ul
 RT: 12.02 min Scan# 1536
 Delta R.T. -0.01 min
 Lab File: BN005285.D
 Acq: 25 Apr 2019 18:24

Instrument :
 BNA_N
 ClientSampled :

Tgt Ion:142 Resp: 1110968

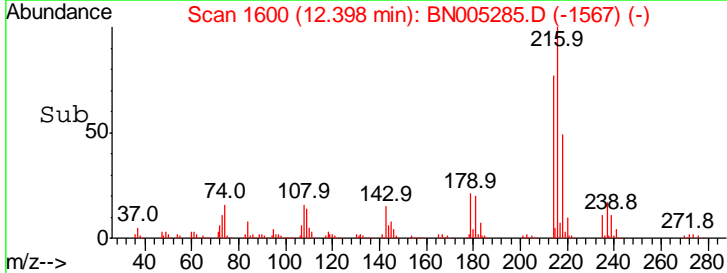
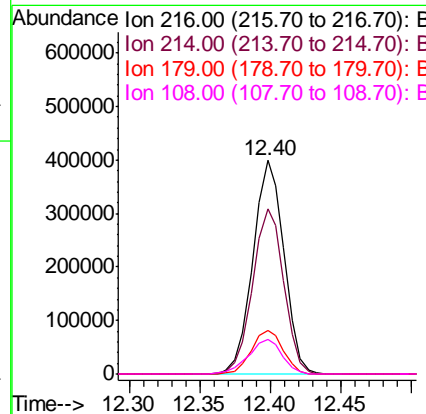
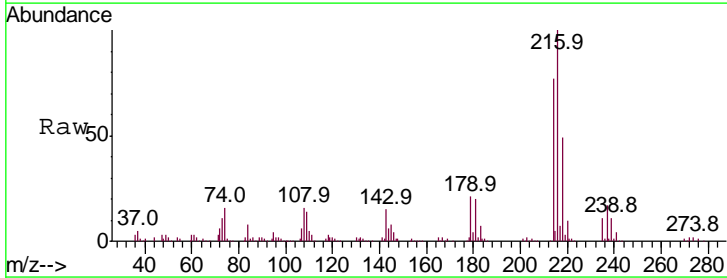
Ion	Ratio	Lower	Upper
142	100		
141	89.7	72.0	108.0

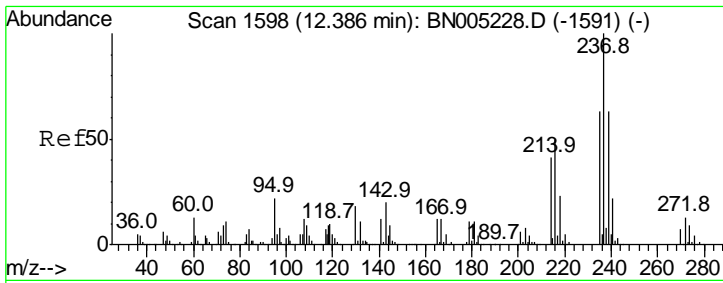


#36
 1,2,4,5-Tetrachlorobenzene
 Concen: 17.811 ng/ul
 RT: 12.40 min Scan# 1600
 Delta R.T. -0.01 min
 Lab File: BN005285.D
 Acq: 25 Apr 2019 18:24

Tgt Ion:216 Resp: 615637

Ion	Ratio	Lower	Upper
216	100		
214	77.1	64.1	96.1
179	20.6	17.4	26.0
108	16.2	13.7	20.5

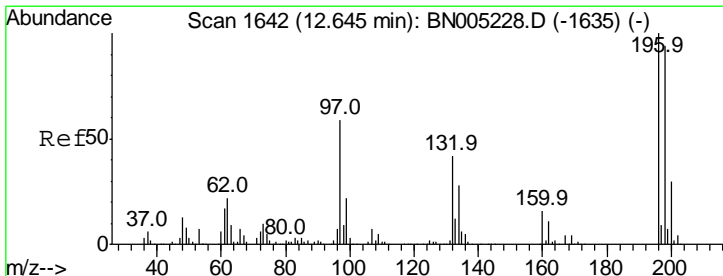
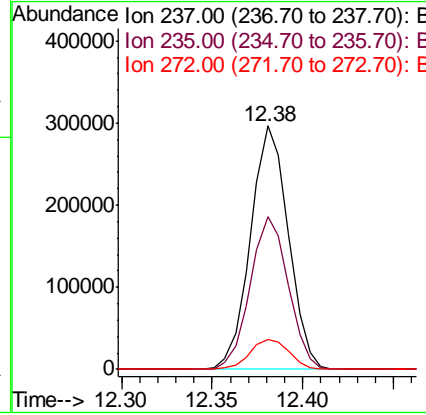
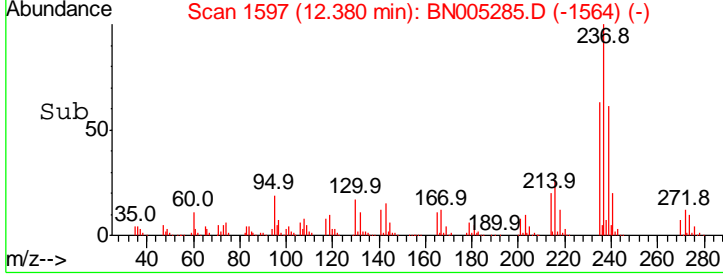
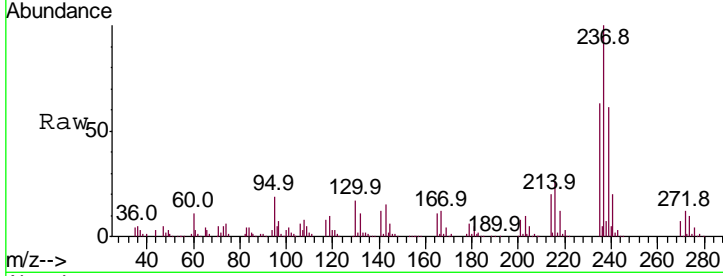




#37
 Hexachlorocyclopentadiene
 Concen: 18.276 ng/ul
 RT: 12.38 min Scan# 1597
 Delta R.T. -0.01 min
 Lab File: BN005285.D
 Acq: 25 Apr 2019 18:24

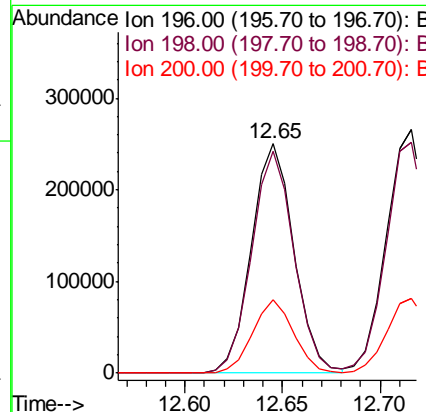
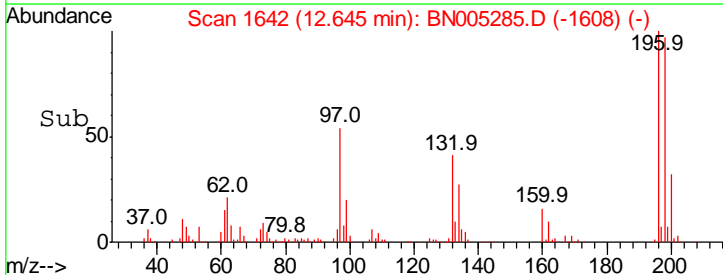
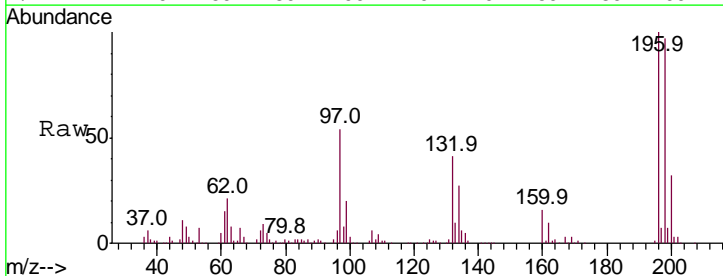
Instrument :
 BNA_N
 ClientSampled :

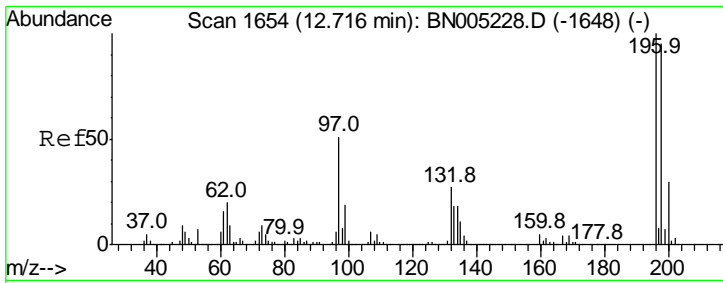
Tgt Ion	Resp	Lower	Upper
237	430707		
235	62.6	51.1	76.7
272	12.4	9.5	14.3



#38
 2,4,6-Trichlorophenol
 Concen: 18.102 ng/ul
 RT: 12.65 min Scan# 1642
 Delta R.T. -0.00 min
 Lab File: BN005285.D
 Acq: 25 Apr 2019 18:24

Tgt Ion	Resp	Lower	Upper
196	377303		
198	96.8	74.8	112.2
200	32.0	23.5	35.3

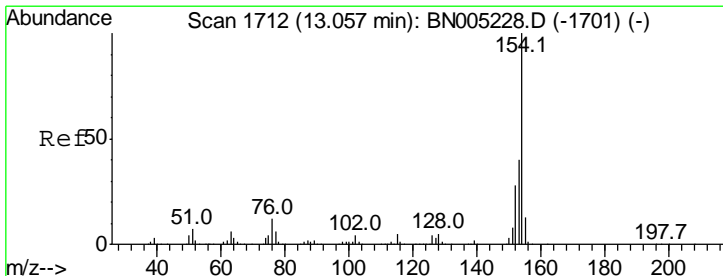
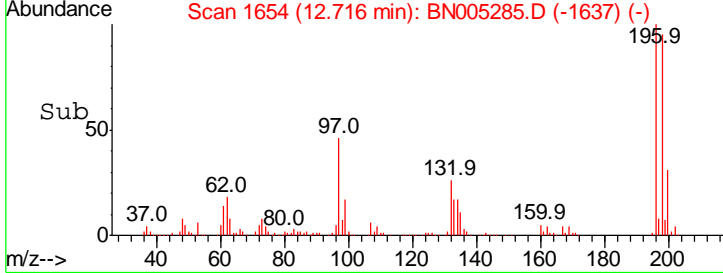
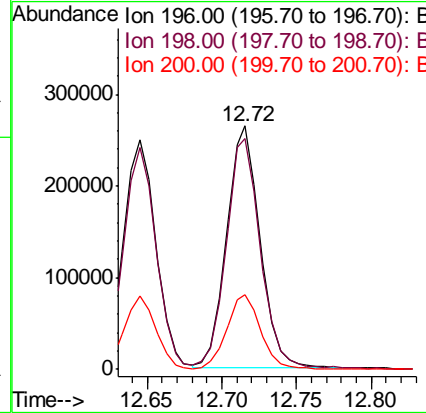
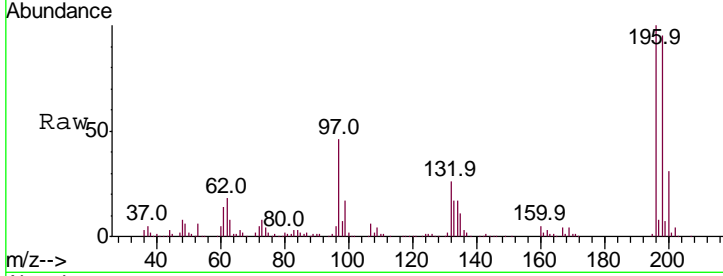




#39
 2,4,5-Trichlorophenol
 Concen: 18.580 ng/ul
 RT: 12.72 min Scan# 1654
 Delta R.T. -0.00 min
 Lab File: BN005285.D
 Acq: 25 Apr 2019 18:24

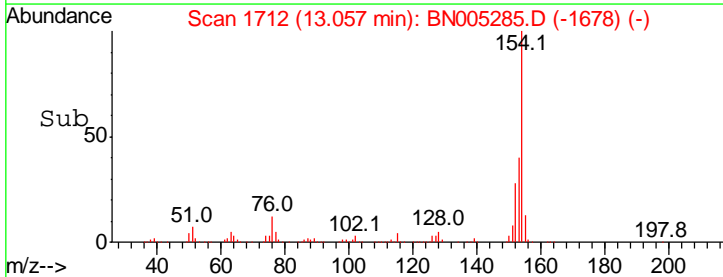
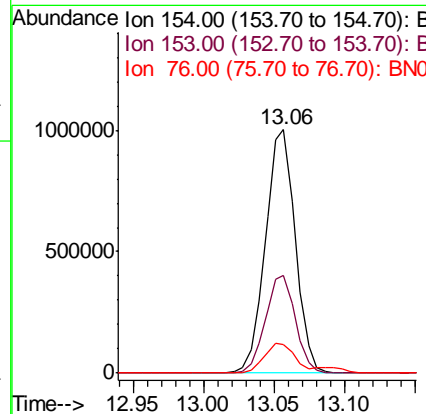
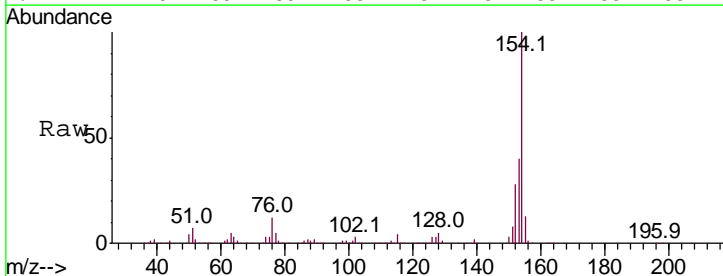
Instrument :
 BNA_N
 ClientSampled :

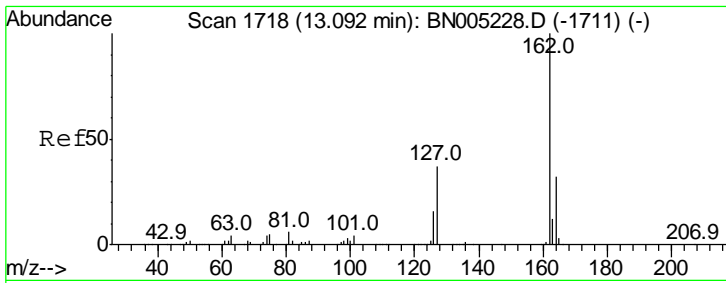
Tgt Ion	Resp	Lower	Upper
196	100		
198	95.0	75.0	112.4
200	30.8	24.2	36.4



#40
 1,1'-Biphenyl
 Concen: 17.878 ng/ul
 RT: 13.06 min Scan# 1712
 Delta R.T. -0.00 min
 Lab File: BN005285.D
 Acq: 25 Apr 2019 18:24

Tgt Ion	Resp	Lower	Upper
154	100		
153	40.4	32.6	49.0
76	11.9	10.4	15.6



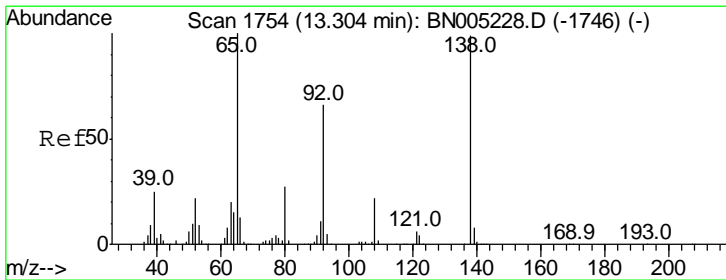
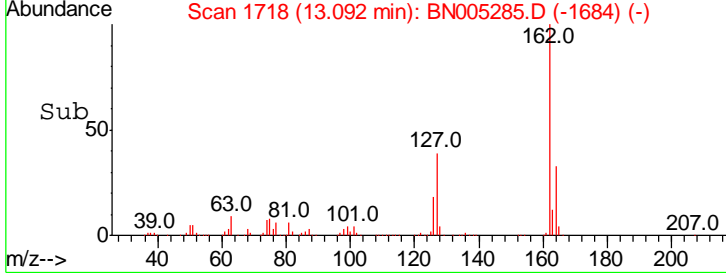
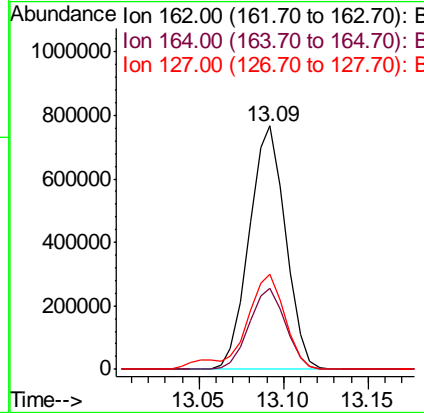
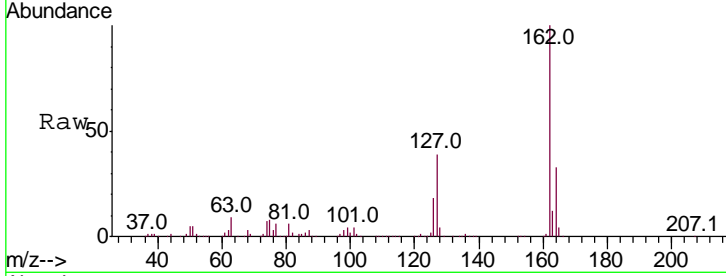


#41
 2-Chloronaphthalene
 Concen: 17.936 ng/ul
 RT: 13.09 min Scan# 1718
 Delta R.T. -0.00 min
 Lab File: BN005285.D
 Acq: 25 Apr 2019 18:24

Instrument :
 BNA_N
 ClientSampled :

Tgt Ion: 162 Resp: 1147994

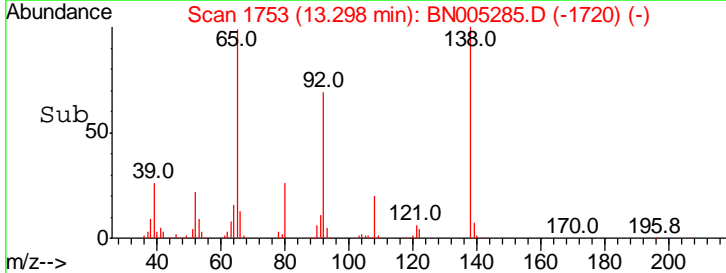
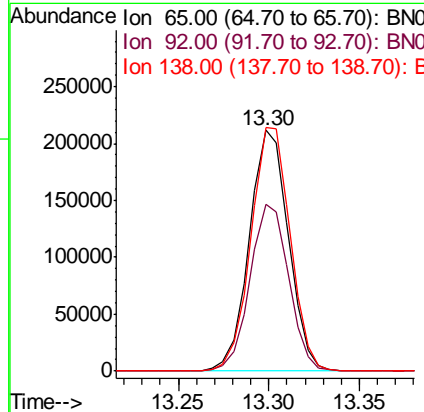
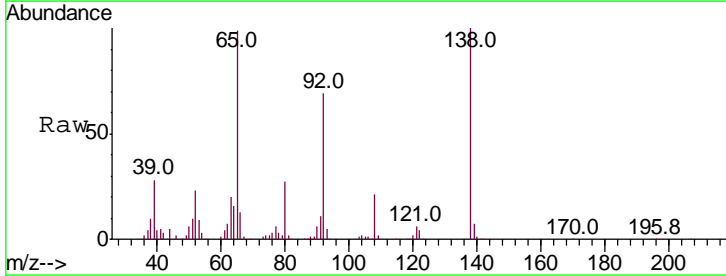
Ion	Ratio	Lower	Upper
162	100		
164	33.0	26.8	40.2
127	38.8	33.5	50.3

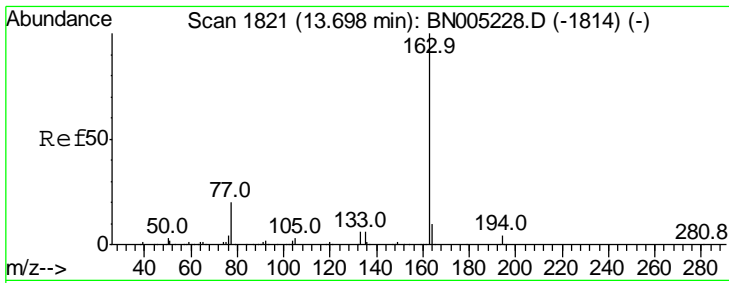


#42
 2-Nitroaniline
 Concen: 18.736 ng/ul
 RT: 13.30 min Scan# 1753
 Delta R.T. -0.01 min
 Lab File: BN005285.D
 Acq: 25 Apr 2019 18:24

Tgt Ion: 65 Resp: 318061

Ion	Ratio	Lower	Upper
65	100		
92	69.3	51.6	77.4
138	101.1	73.9	110.9



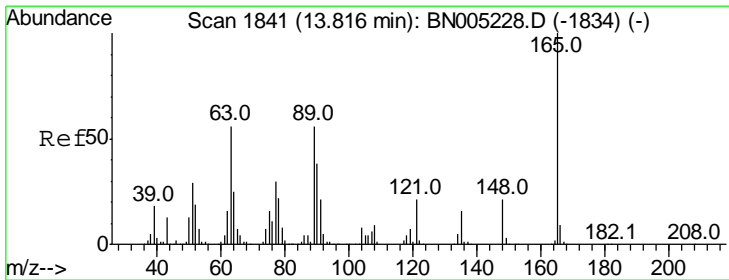
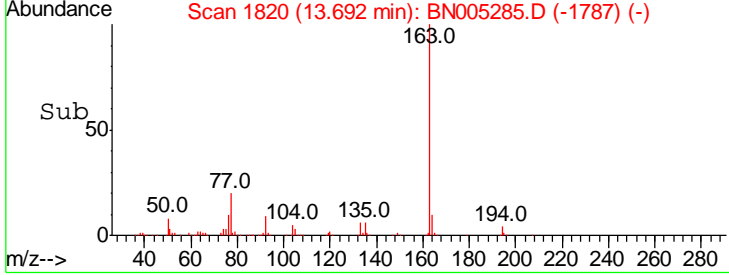
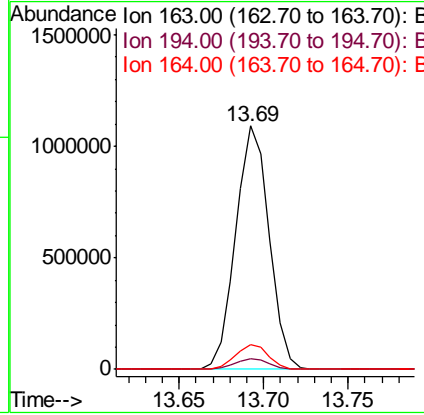
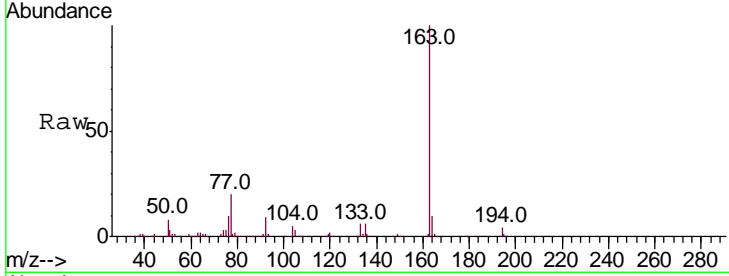


#44
 Dimethylphthalate
 Concen: 18.556 ng/ul
 RT: 13.69 min Scan# 1820
 Delta R.T. -0.01 min
 Lab File: BN005285.D
 Acq: 25 Apr 2019 18:24

Instrument :
 BNA_N
 ClientSampled :

Tgt Ion:163 Resp: 1499076

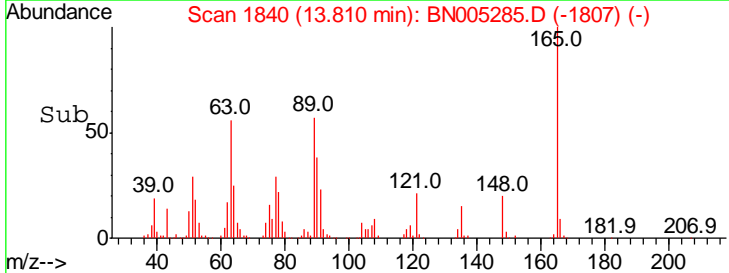
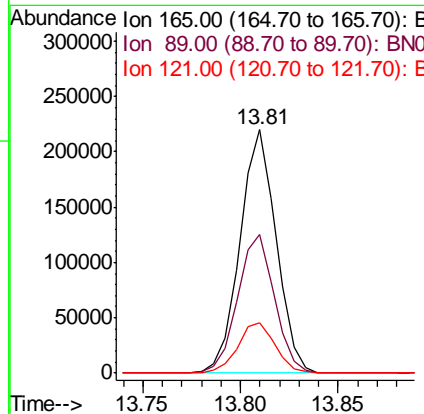
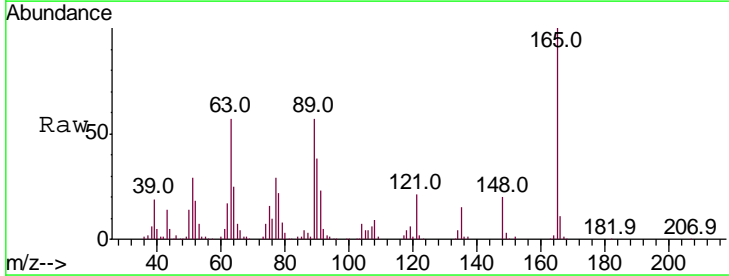
Ion	Ratio	Lower	Upper
163	100		
194	4.3	3.4	5.0
164	10.3	8.1	12.1

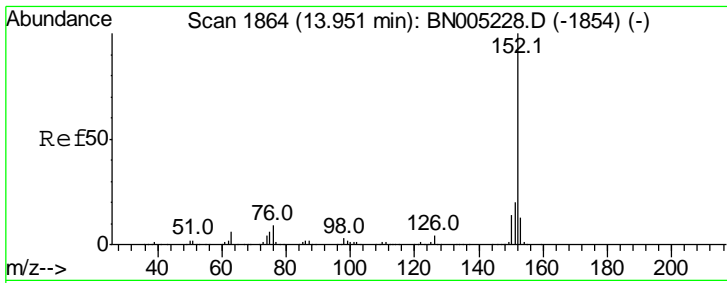


#45
 2,6-Dinitrotoluene
 Concen: 20.239 ng/ul
 RT: 13.81 min Scan# 1840
 Delta R.T. -0.01 min
 Lab File: BN005285.D
 Acq: 25 Apr 2019 18:24

Tgt Ion:165 Resp: 282325

Ion	Ratio	Lower	Upper
165	100		
89	57.0	50.2	75.2
121	20.9	19.4	29.2



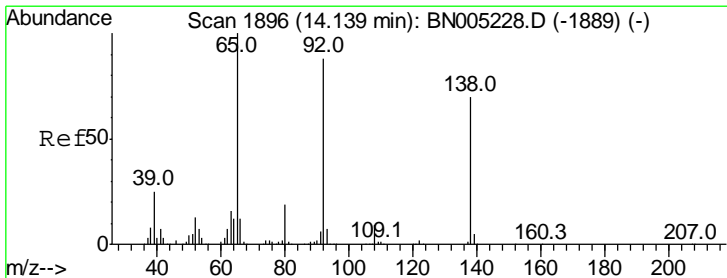
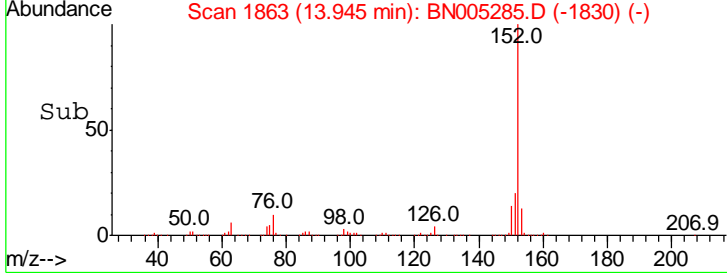
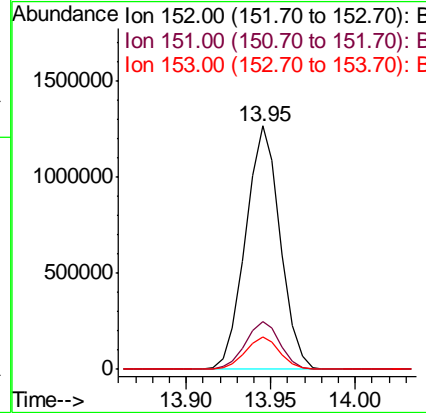
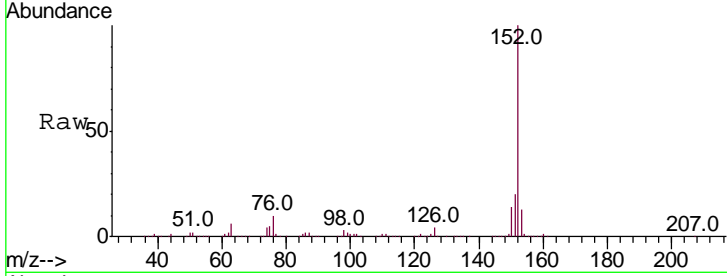


#47
 Acenaphthylene
 Concen: 18.397 ng/ul
 RT: 13.95 min Scan# 1863
 Delta R.T. -0.01 min
 Lab File: BN005285.D
 Acq: 25 Apr 2019 18:24

Instrument :
 BNA_N
 ClientSampled :

Tgt Ion:152 Resp: 1800419

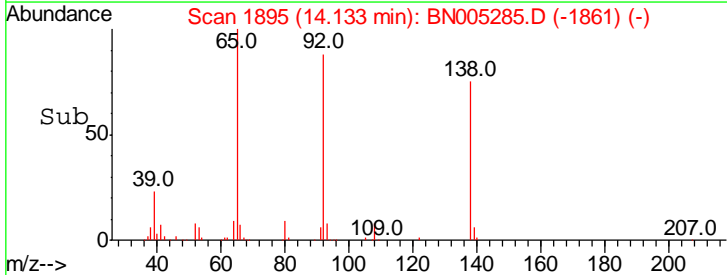
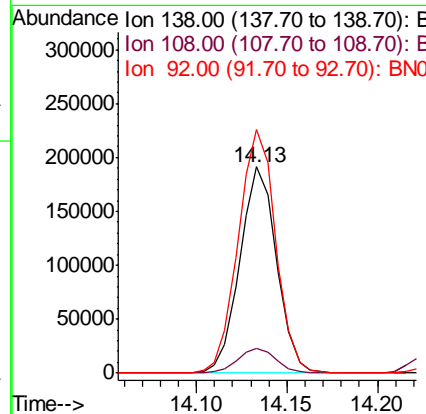
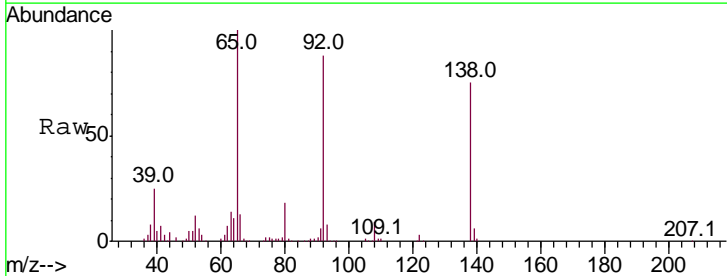
Ion	Ratio	Lower	Upper
152	100		
151	19.8	15.8	23.8
153	13.2	9.8	14.8

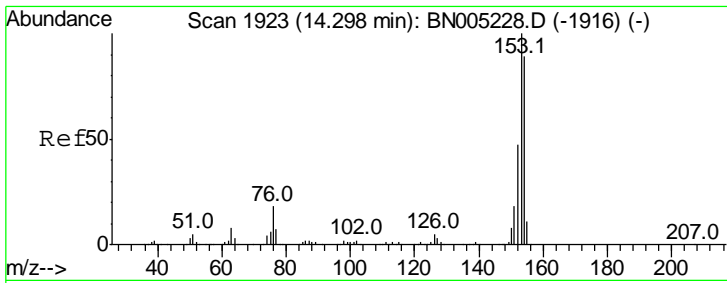


#48
 3-Nitroaniline
 Concen: 20.816 ng/ul
 RT: 14.13 min Scan# 1895
 Delta R.T. -0.00 min
 Lab File: BN005285.D
 Acq: 25 Apr 2019 18:24

Tgt Ion:138 Resp: 269954

Ion	Ratio	Lower	Upper
138	100		
108	12.2	12.1	18.1
92	118.1	102.9	154.3





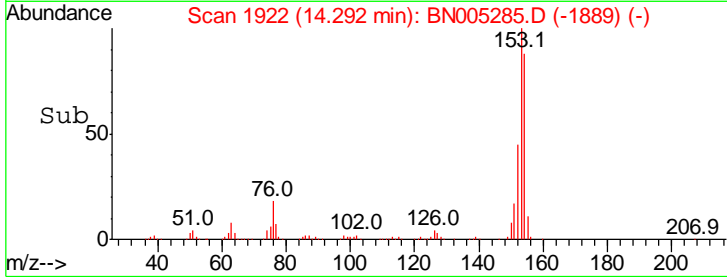
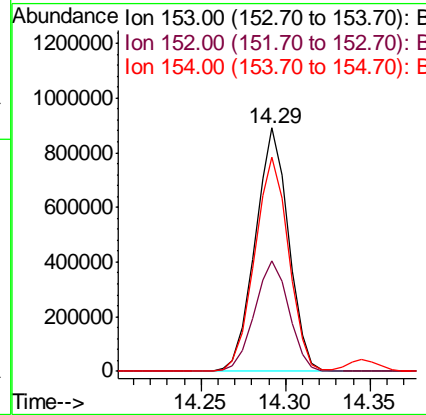
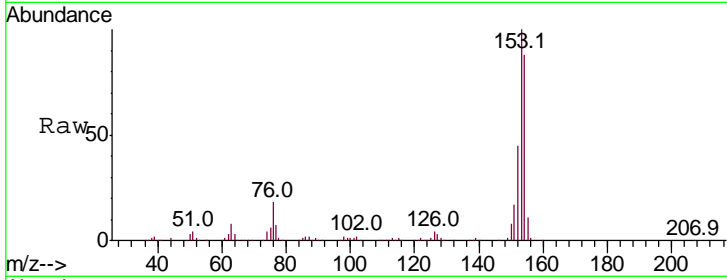
#49

Acenaphthene

Concen: 18.326 ng/ul
 RT: 14.29 min Scan# 1922
 Delta R.T. -0.01 min
 Lab File: BN005285.D
 Acq: 25 Apr 2019 18:24

Instrument :
 BNA_N
 ClientSampled :

Tgt Ion	Resp	Lower	Upper
153	100		
152	45.2	37.4	56.0
154	88.0	71.2	106.8

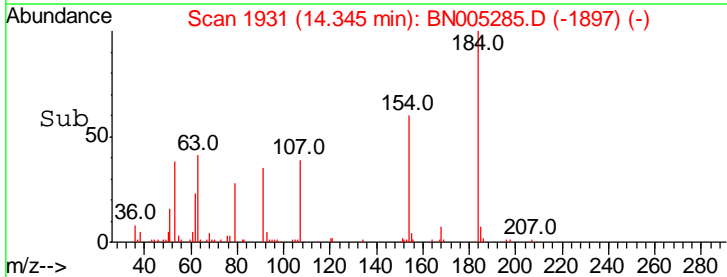
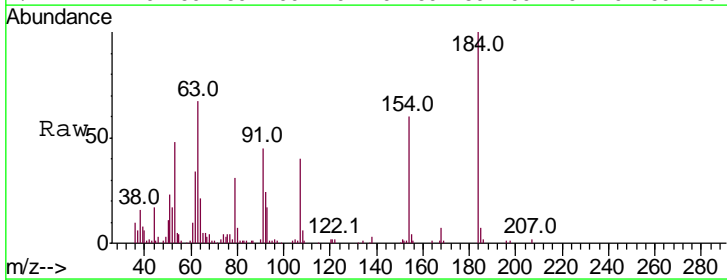
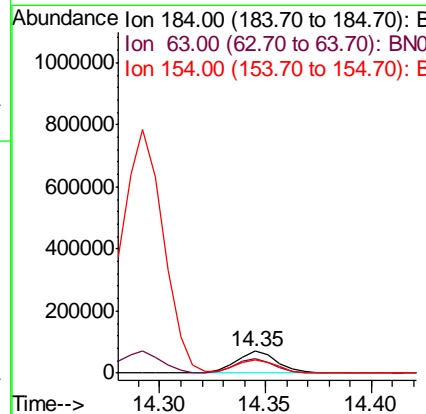
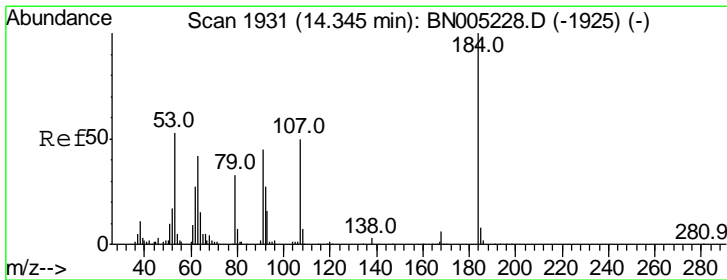


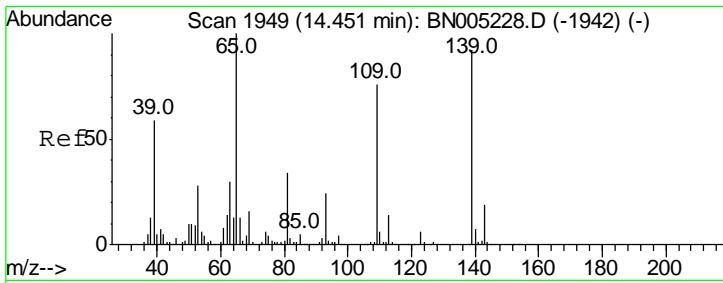
#50

2,4-Dinitrophenol

Concen: 14.048 ng/ul
 RT: 14.35 min Scan# 1931
 Delta R.T. -0.00 min
 Lab File: BN005285.D
 Acq: 25 Apr 2019 18:24

Tgt Ion	Resp	Lower	Upper
184	100		
63	66.8	59.8	89.8
154	59.9	56.3	84.5

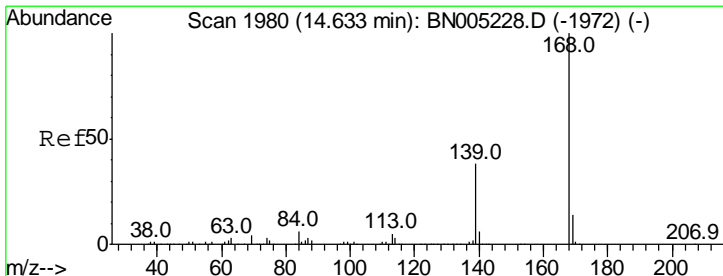
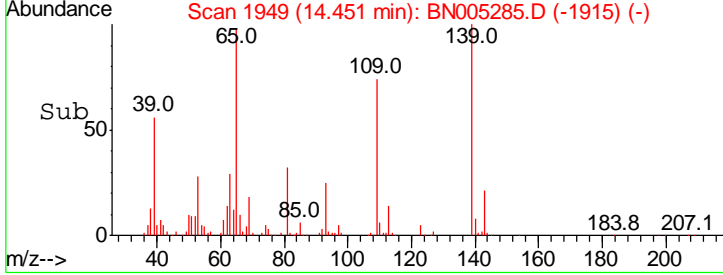
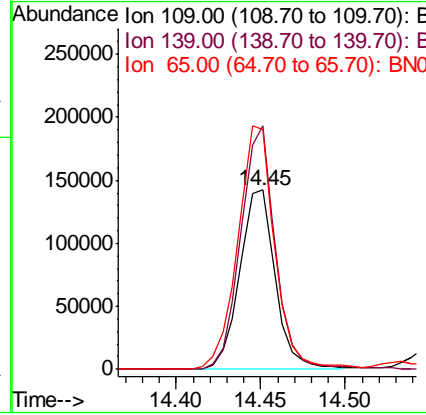
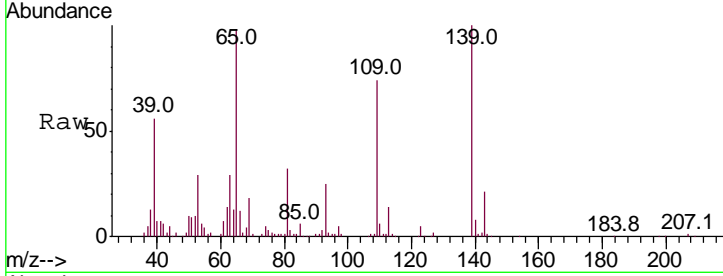




#52
 4-Nitrophenol
 Concen: 18.012 ng/ul
 RT: 14.45 min Scan# 1949
 Delta R.T. -0.00 min
 Lab File: BN005285.D
 Acq: 25 Apr 2019 18:24

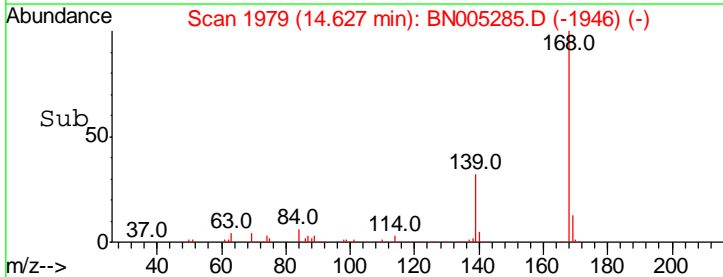
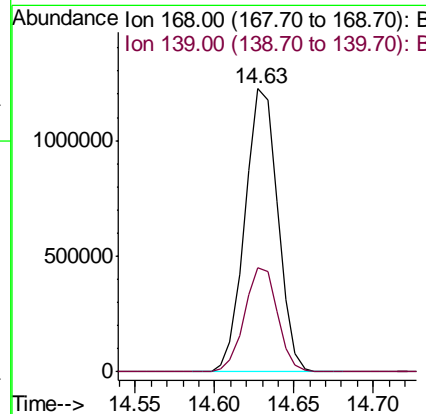
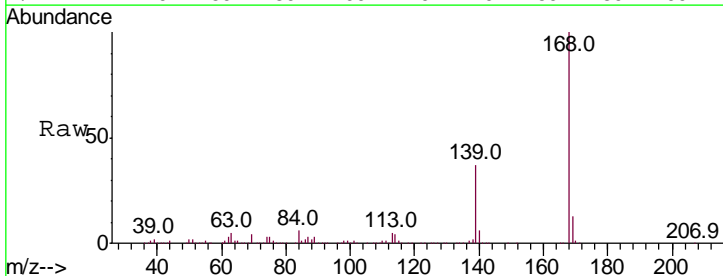
Instrument :
 BNA_N
 ClientSampled :

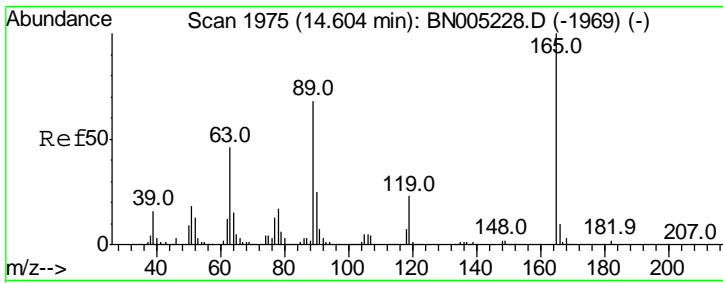
Tgt Ion	Resp	Lower	Upper
109	100		
139	135.6	92.3	138.5
65	133.4	97.5	146.3



#53
 Dibenzofuran
 Concen: 18.356 ng/ul
 RT: 14.63 min Scan# 1979
 Delta R.T. -0.01 min
 Lab File: BN005285.D
 Acq: 25 Apr 2019 18:24

Tgt Ion	Resp	Lower	Upper
168	100		
139	36.8	30.9	46.3

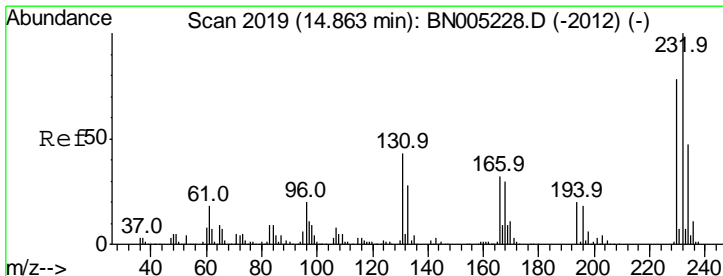
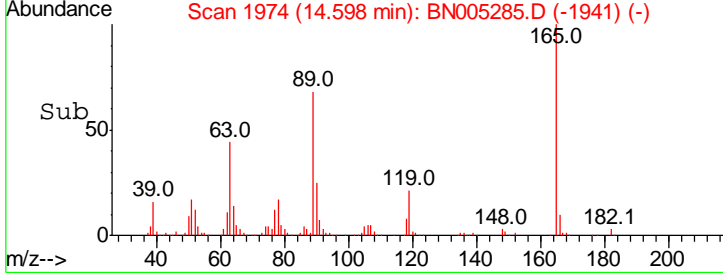
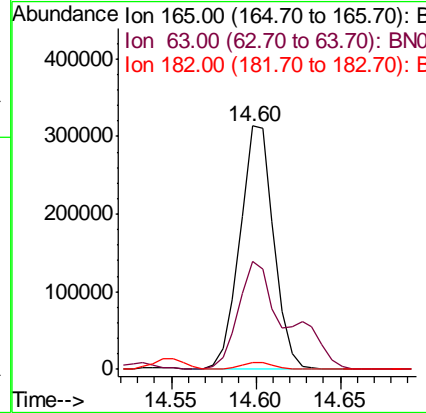
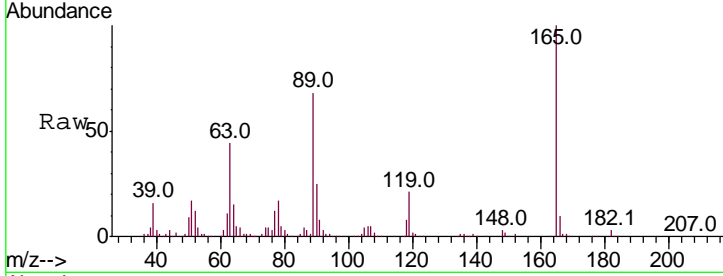




#54
 2,4-Dinitrotoluene
 Concen: 21.682 ng/ul
 RT: 14.60 min Scan# 1974
 Delta R.T. -0.01 min
 Lab File: BN005285.D
 Acq: 25 Apr 2019 18:24

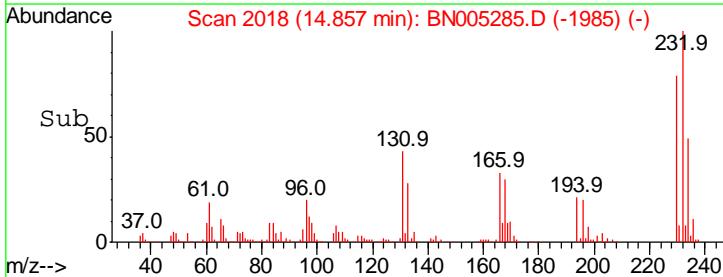
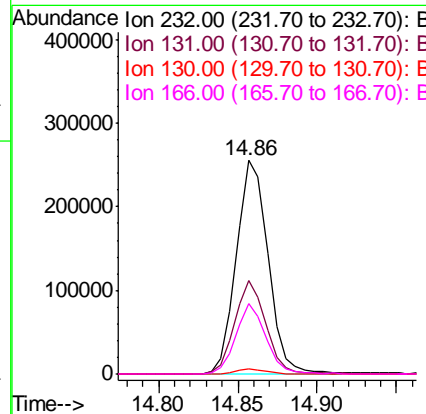
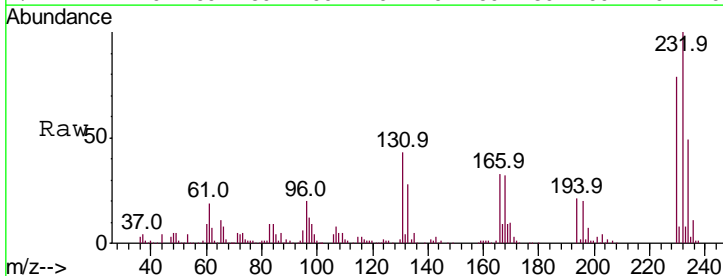
Instrument :
 BNA_N
 ClientSampled :

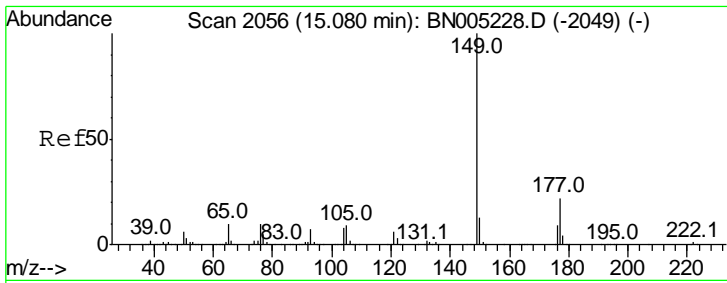
Tgt Ion	Resp	Lower	Upper
165	100		
63	44.4	38.9	58.3
182	2.8	2.6	3.8



#55
 2,3,4,6-Tetrachlorophenol
 Concen: 19.139 ng/ul
 RT: 14.86 min Scan# 2018
 Delta R.T. -0.01 min
 Lab File: BN005285.D
 Acq: 25 Apr 2019 18:24

Tgt Ion	Resp	Lower	Upper
232	100		
131	43.5	36.6	54.8
130	2.2	2.0	3.0
166	32.8	26.6	39.8



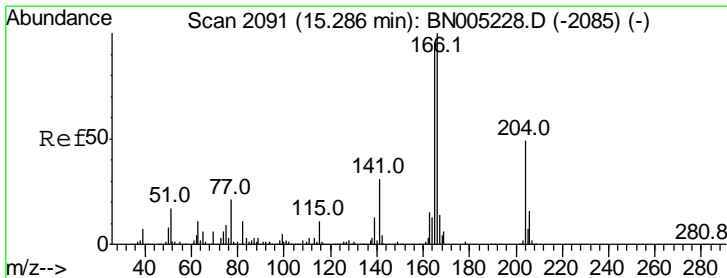
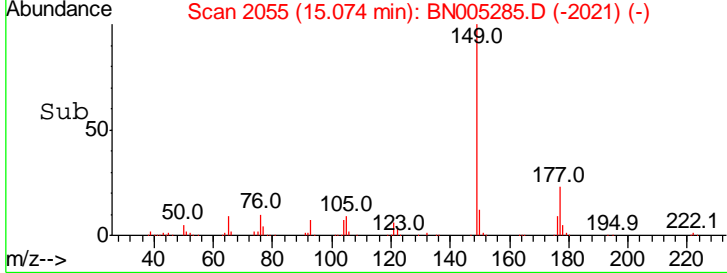
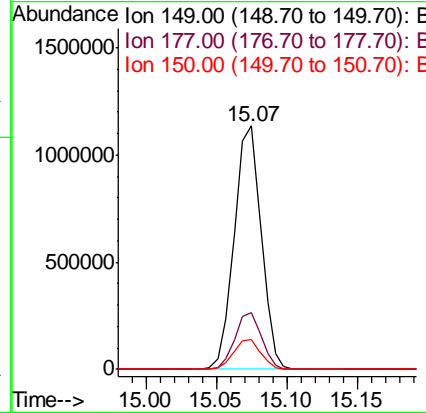
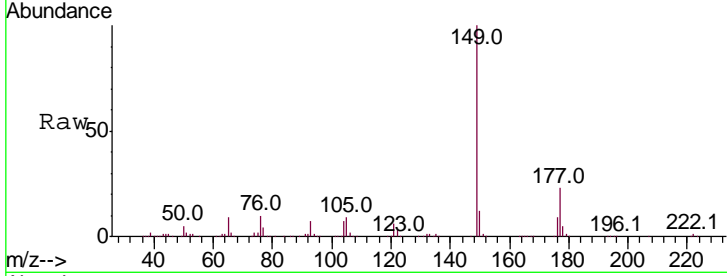


#56
 Diethylphthalate
 Concen: 18.696 ng/ul
 RT: 15.07 min Scan# 2055
 Delta R.T. -0.00 min
 Lab File: BN005285.D
 Acq: 25 Apr 2019 18:24

Instrument :
 BNA_N
 ClientSampled :

Tgt Ion:149 Resp: 1514524

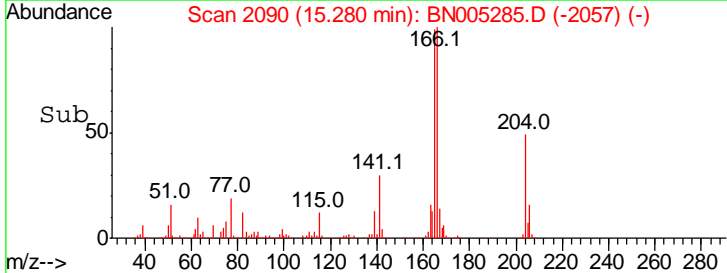
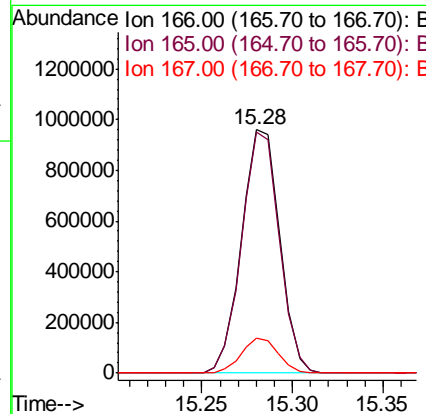
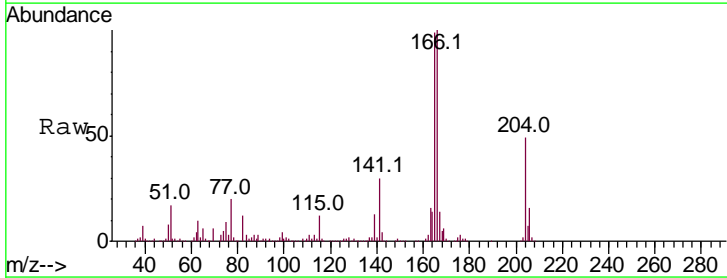
Ion	Ratio	Lower	Upper
149	100		
177	23.5	17.7	26.5
150	12.4	10.0	15.0

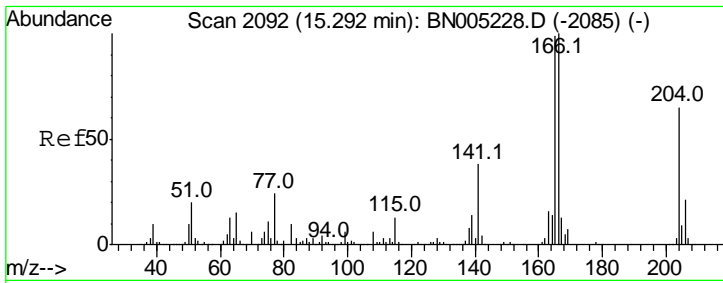


#58
 Fluorene
 Concen: 18.695 ng/ul
 RT: 15.28 min Scan# 2090
 Delta R.T. -0.01 min
 Lab File: BN005285.D
 Acq: 25 Apr 2019 18:24

Tgt Ion:166 Resp: 1403238

Ion	Ratio	Lower	Upper
166	100		
165	98.8	80.0	120.0
167	14.2	10.7	16.1

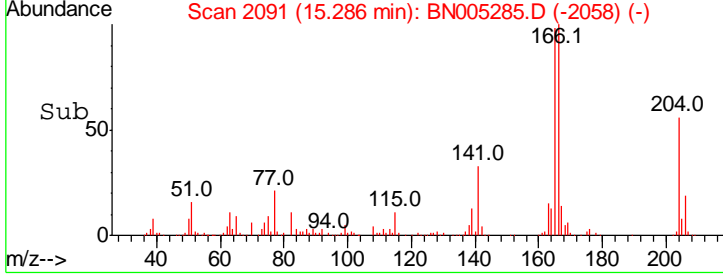
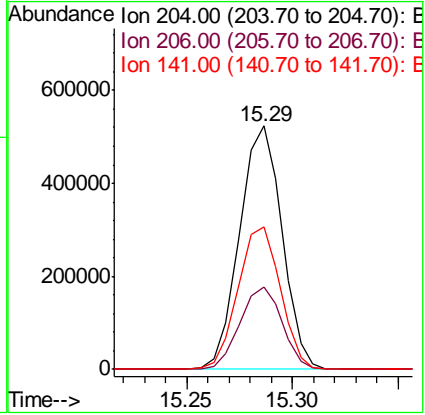
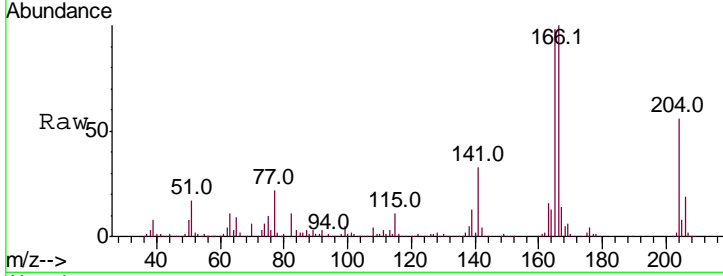




#59
 4-Chlorophenyl-phenylether
 Concen: 18.358 ng/ul
 RT: 15.29 min Scan# 2091
 Delta R.T. -0.01 min
 Lab File: BN005285.D
 Acq: 25 Apr 2019 18:24

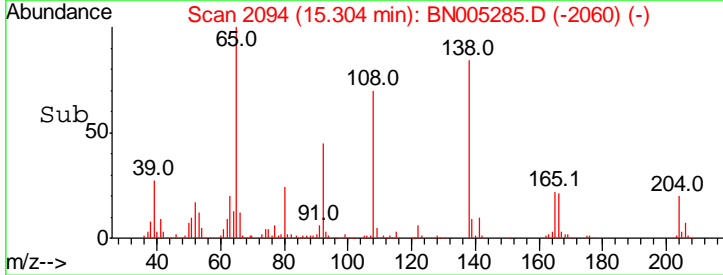
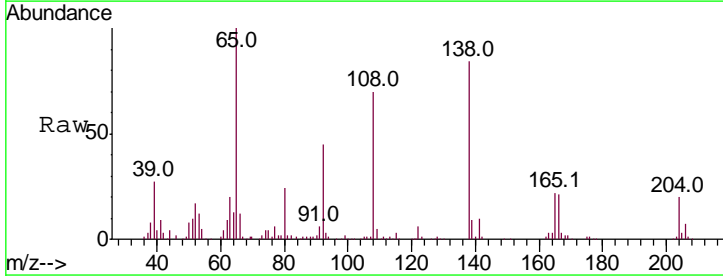
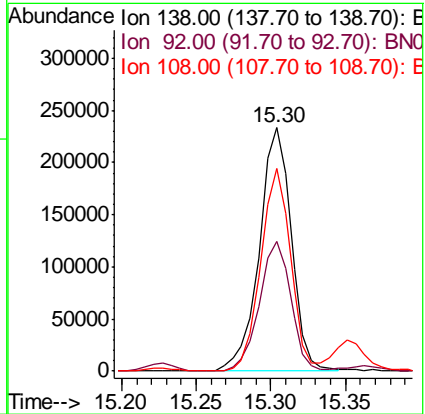
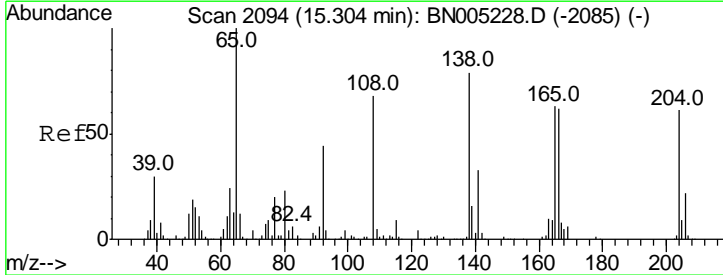
Instrument :
 BNA_N
 ClientSampled :

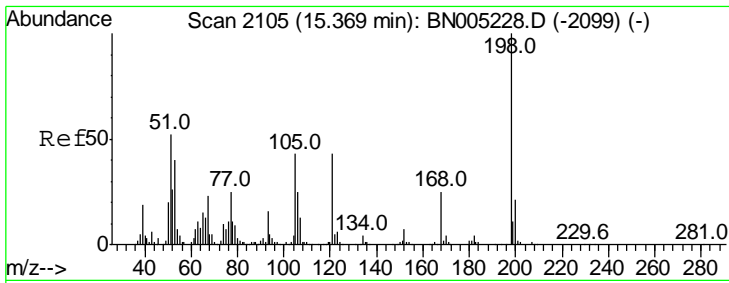
Tgt Ion	Resp	Lower	Upper
204	100		
206	33.6	26.9	40.3
141	58.5	47.9	71.9



#60
 4-Nitroaniline
 Concen: 21.369 ng/ul
 RT: 15.30 min Scan# 2094
 Delta R.T. -0.00 min
 Lab File: BN005285.D
 Acq: 25 Apr 2019 18:24

Tgt Ion	Resp	Lower	Upper
138	100		
92	53.5	45.3	67.9
108	83.5	73.2	109.8

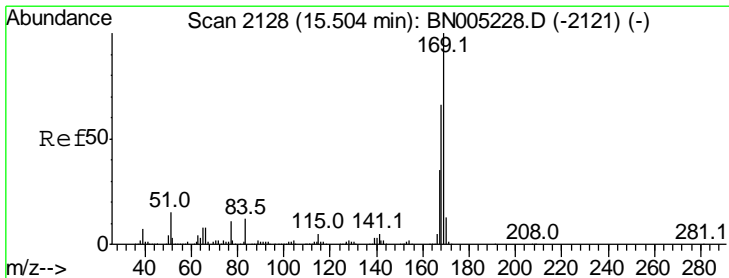
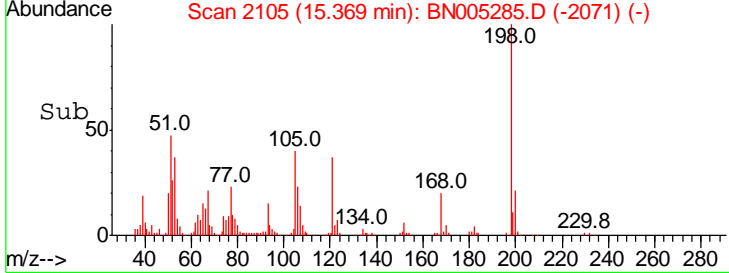
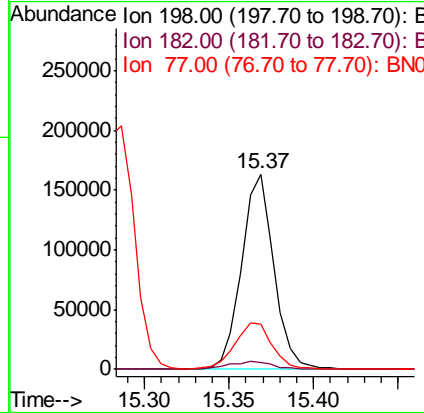
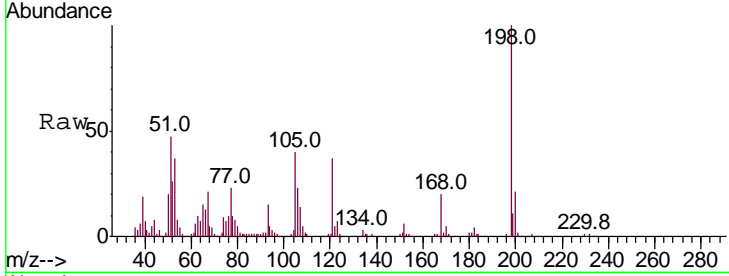




#63
 4,6-Dinitro-2-methylphenol
 Concen: 17.063 ng/ul
 RT: 15.37 min Scan# 2105
 Delta R.T. -0.00 min
 Lab File: BN005285.D
 Acq: 25 Apr 2019 18:24

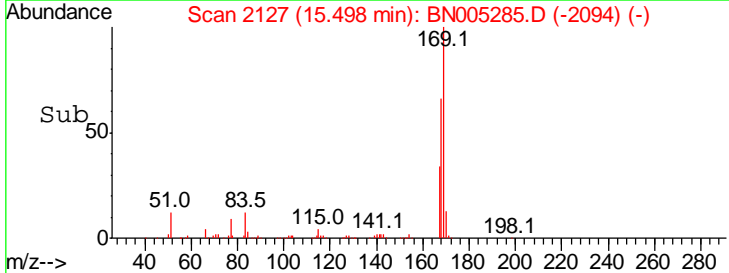
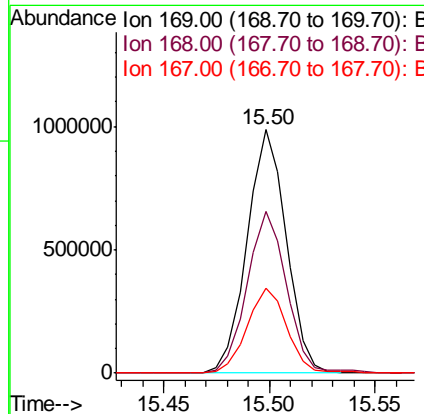
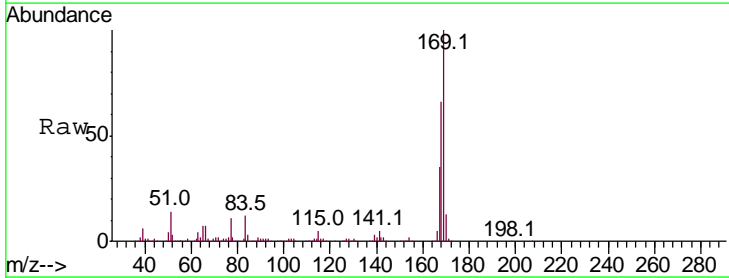
Instrument :
 BNA_N
 ClientSampled :

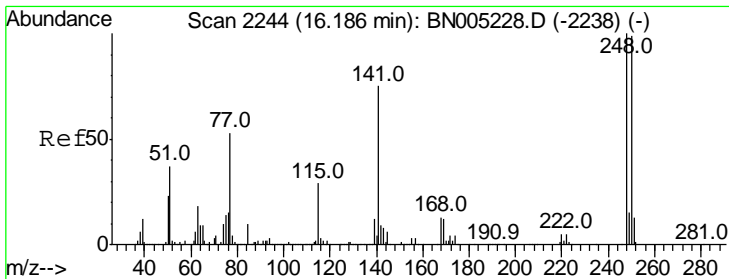
Tgt Ion	Resp	Lower	Upper
198	100		
182	3.7	3.0	4.6
77	23.1	21.9	32.9



#64
 N-Nitrosodiphenylamine
 Concen: 17.357 ng/ul
 RT: 15.50 min Scan# 2127
 Delta R.T. -0.01 min
 Lab File: BN005285.D
 Acq: 25 Apr 2019 18:24

Tgt Ion	Resp	Lower	Upper
169	100		
168	66.3	52.2	78.2
167	34.6	27.7	41.5

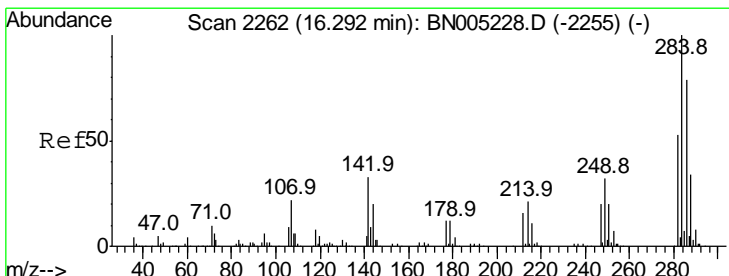
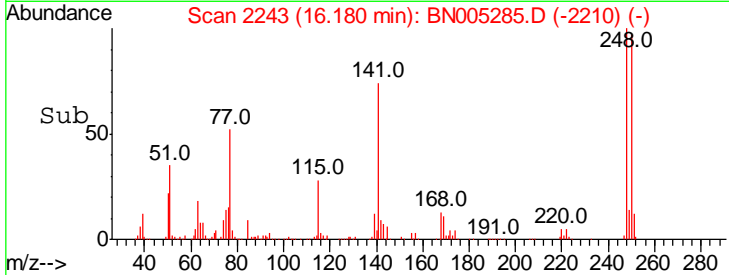
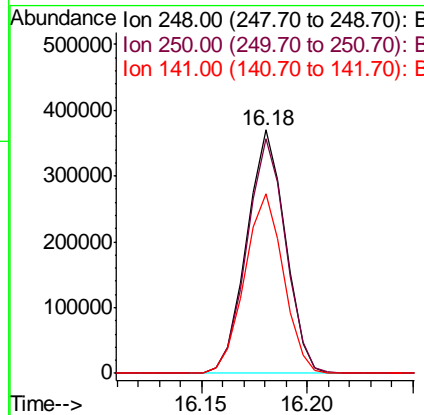
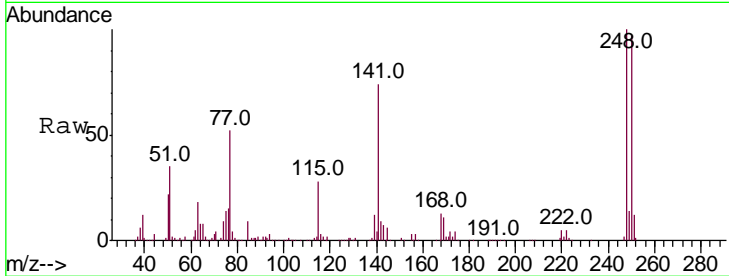




#65
 4-Bromophenyl-phenylether
 Concen: 17.484 ng/ul
 RT: 16.18 min Scan# 2243
 Delta R.T. -0.01 min
 Lab File: BN005285.D
 Acq: 25 Apr 2019 18:24

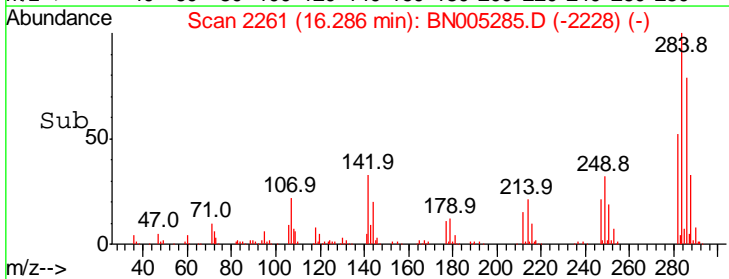
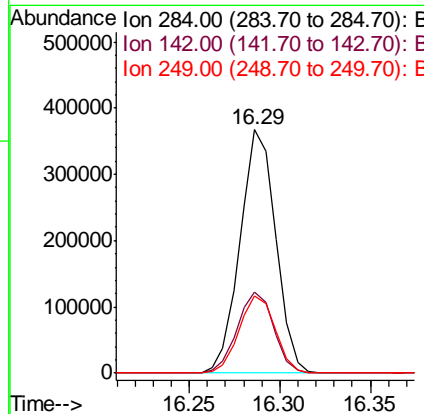
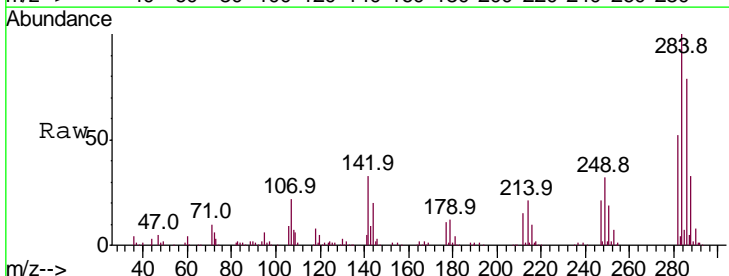
Instrument :
 BNA_N
 ClientSampled :

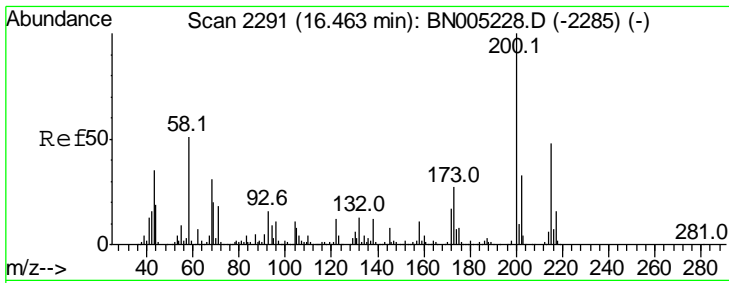
Tgt Ion	Resp	Lower	Upper
248	100		
250	96.5	78.4	117.6
141	73.8	61.8	92.6



#66
 Hexachlorobenzene
 Concen: 17.554 ng/ul
 RT: 16.29 min Scan# 2261
 Delta R.T. -0.01 min
 Lab File: BN005285.D
 Acq: 25 Apr 2019 18:24

Tgt Ion	Resp	Lower	Upper
284	100		
142	33.2	29.4	44.2
249	31.6	26.1	39.1

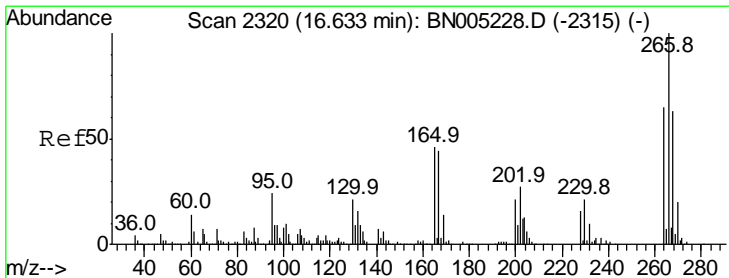
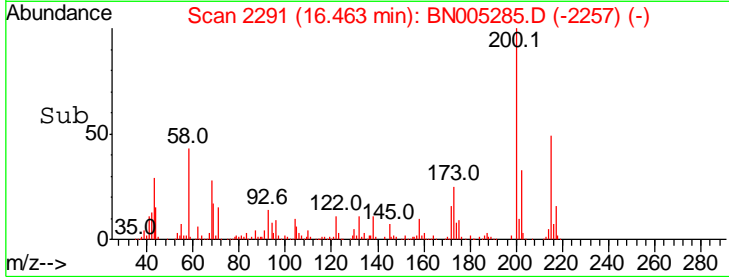
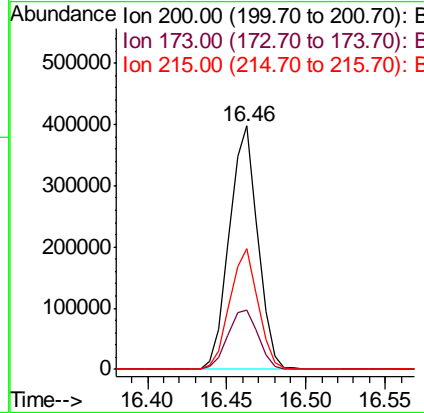
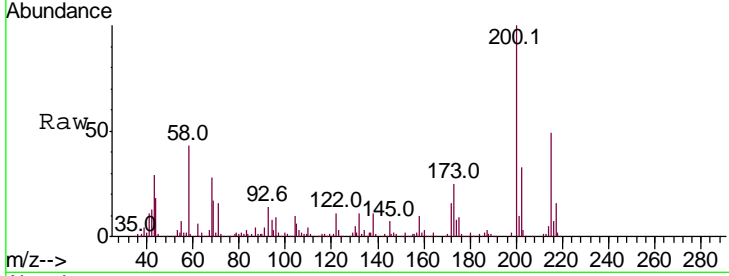




#67
 Atrazine
 Concen: 18.165 ng/ul
 RT: 16.46 min Scan# 2291
 Delta R.T. -0.00 min
 Lab File: BN005285.D
 Acq: 25 Apr 2019 18:24

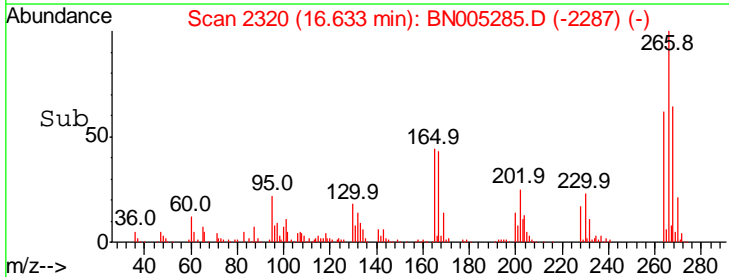
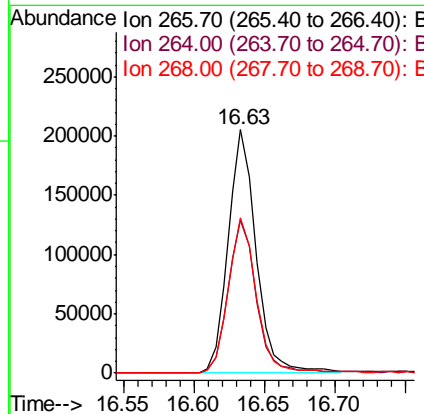
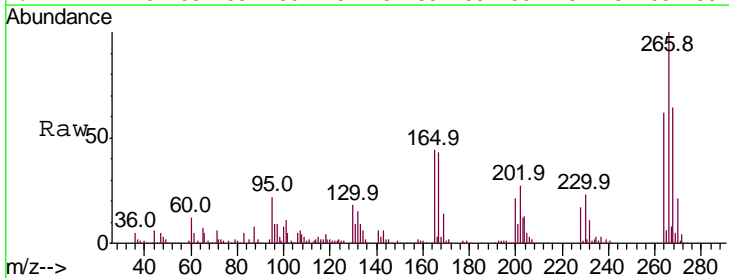
Instrument :
 BNA_N
 ClientSampled :

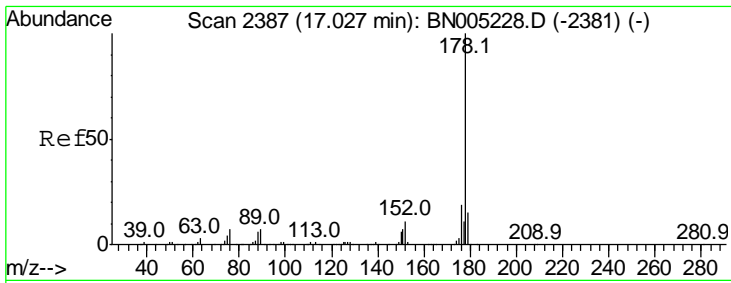
Tgt Ion	Resp	Lower	Upper
200	100		
173	24.5	21.4	32.0
215	49.5	39.1	58.7



#68
 Pentachlorophenol
 Concen: 16.912 ng/ul
 RT: 16.63 min Scan# 2320
 Delta R.T. -0.01 min
 Lab File: BN005285.D
 Acq: 25 Apr 2019 18:24

Tgt Ion	Resp	Lower	Upper
266	100		
264	62.5	49.7	74.5
268	64.0	52.4	78.6



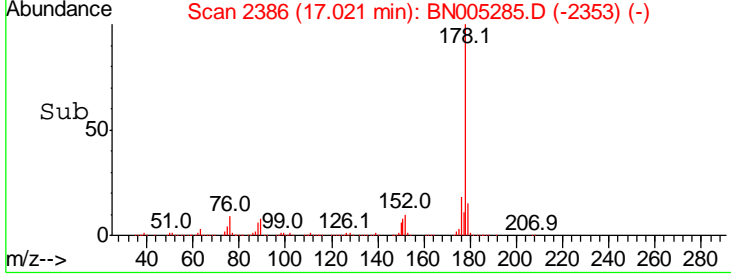
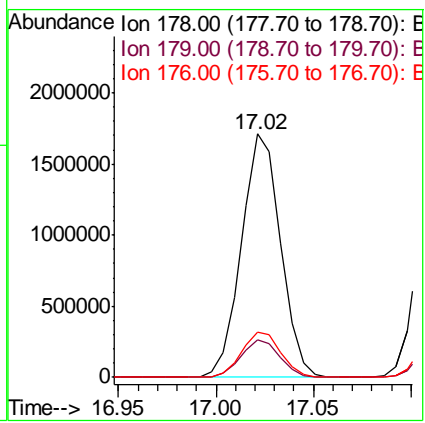
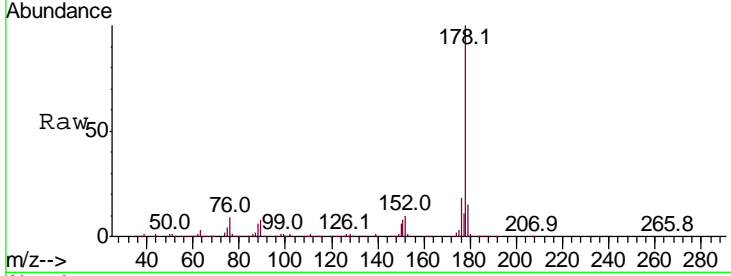


#69
 Phenanthrene
 Concen: 18.226 ng/ul
 RT: 17.02 min Scan# 2386
 Delta R.T. -0.01 min
 Lab File: BN005285.D
 Acq: 25 Apr 2019 18:24

Instrument :
 BNA_N
 ClientSampled :

Tgt Ion:178 Resp: 2372833

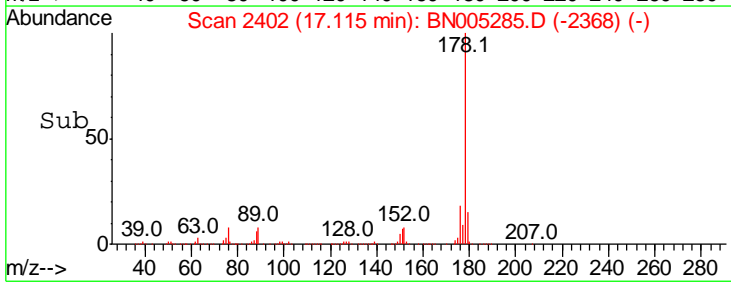
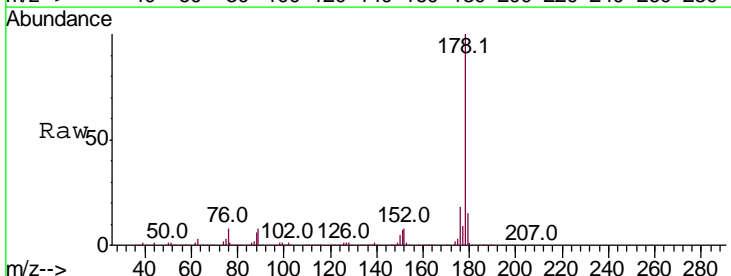
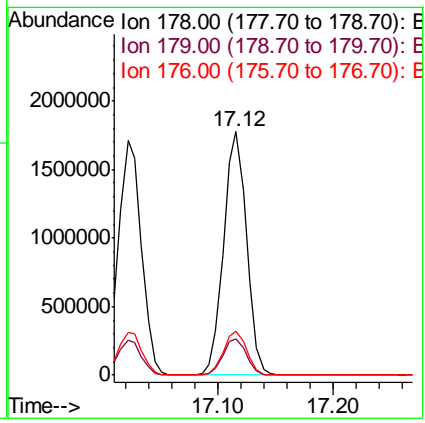
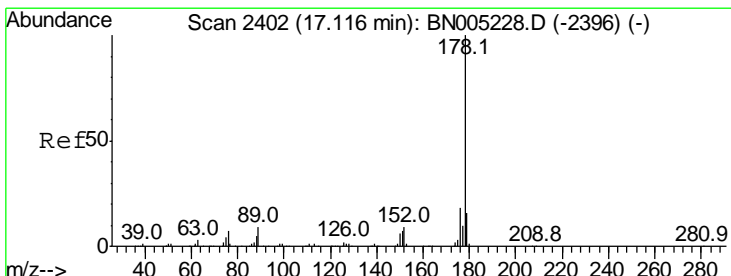
Ion	Ratio	Lower	Upper
178	100		
179	15.2	12.2	18.4
176	18.4	15.1	22.7

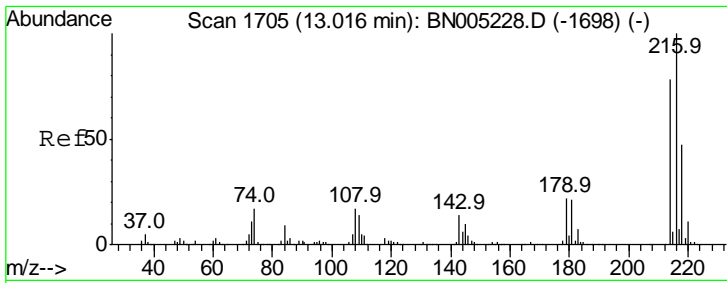


#71
 Anthracene
 Concen: 18.374 ng/ul
 RT: 17.12 min Scan# 2402
 Delta R.T. -0.00 min
 Lab File: BN005285.D
 Acq: 25 Apr 2019 18:24

Tgt Ion:178 Resp: 2436824

Ion	Ratio	Lower	Upper
178	100		
179	14.9	12.3	18.5
176	18.2	15.1	22.7

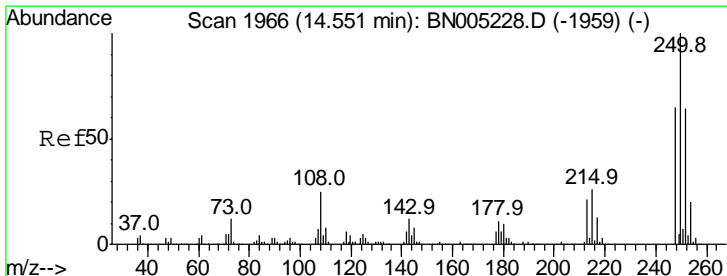
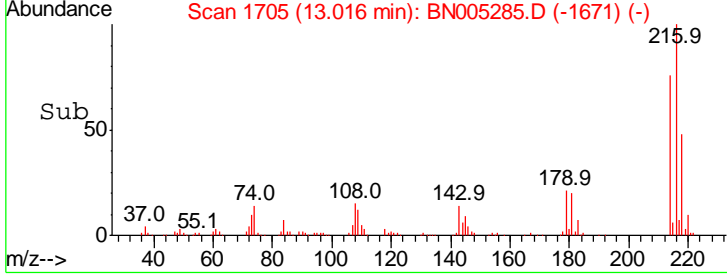
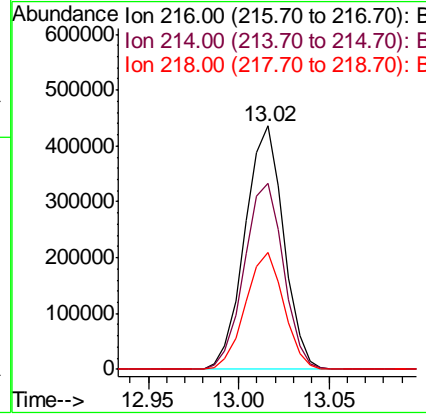
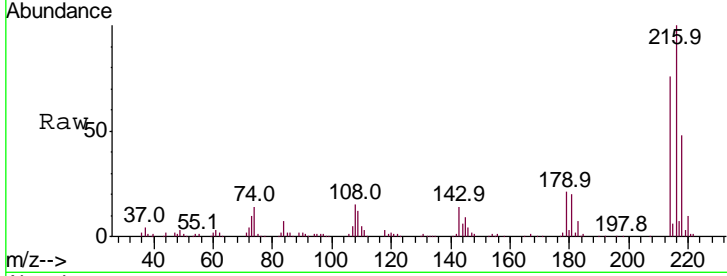




#72
 1,2,3,4-Tetrachlorobenzene
 Concen: 16.589 ng/uL
 RT: 13.02 min Scan# 1705
 Delta R.T. -0.00 min
 Lab File: BN005285.D
 Acq: 25 Apr 2019 18:24

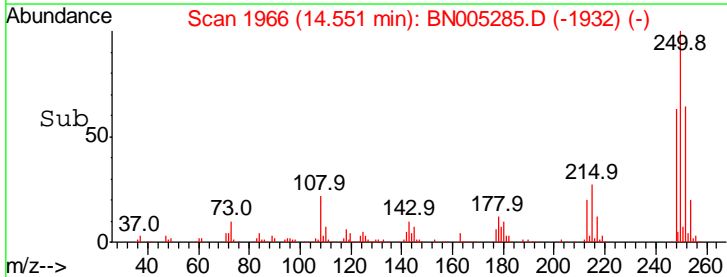
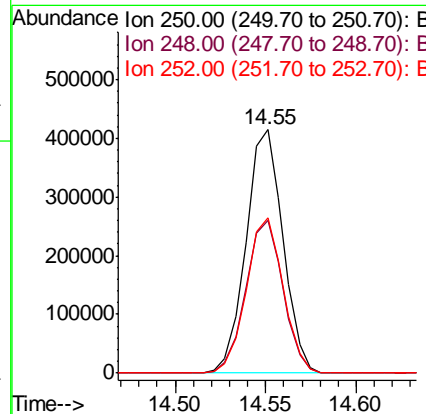
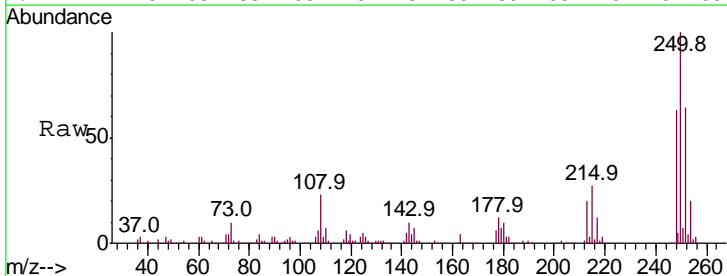
Instrument :
 BNA_N
 ClientSampled :

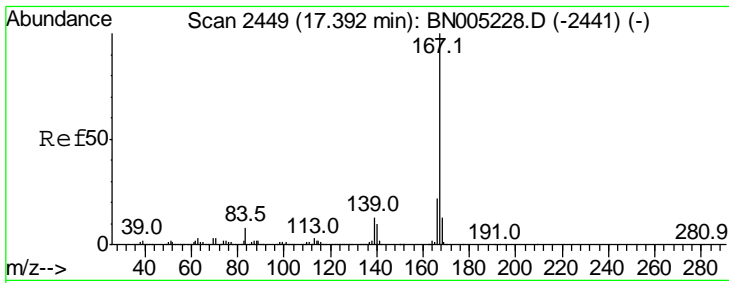
Tgt Ion	Resp	Lower	Upper
216	100		
214	76.2	60.8	91.2
218	48.2	38.6	58.0



#73
 Pentachlorobenzene
 Concen: 16.703 ng/uL
 RT: 14.55 min Scan# 1966
 Delta R.T. -0.00 min
 Lab File: BN005285.D
 Acq: 25 Apr 2019 18:24

Tgt Ion	Resp	Lower	Upper
250	100		
248	62.9	50.6	75.8
252	63.6	51.8	77.8



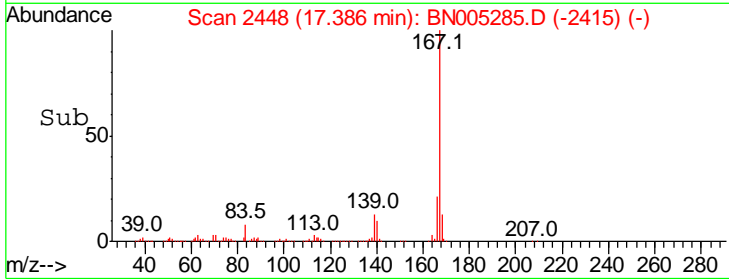
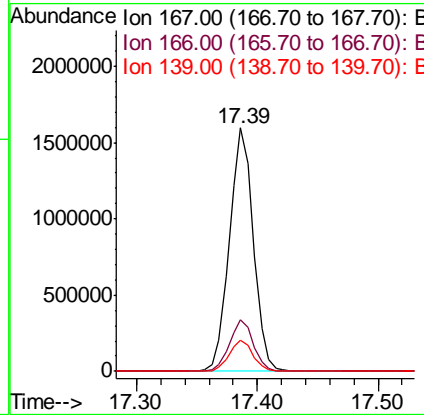
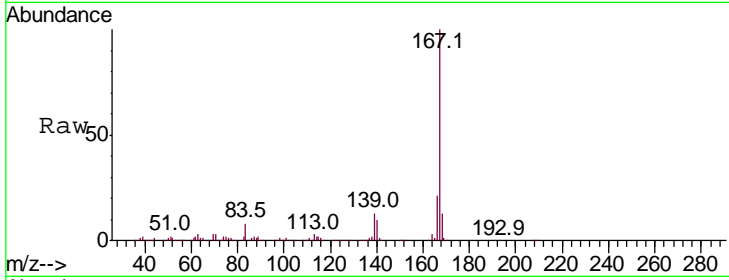


#74
 Carbazole
 Concen: 19.256 ng/ul
 RT: 17.39 min Scan# 2448
 Delta R.T. -0.01 min
 Lab File: BN005285.D
 Acq: 25 Apr 2019 18:24

Instrument :
 BNA_N
 ClientSampled :

Tgt Ion:167 Resp: 2193771

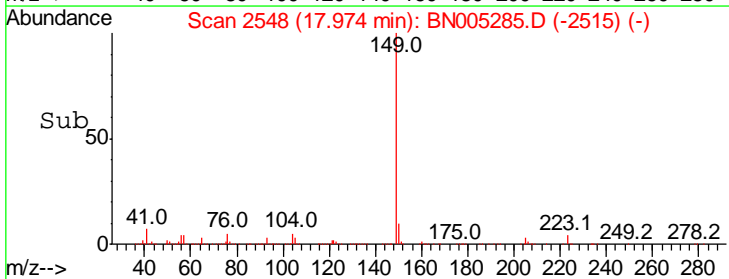
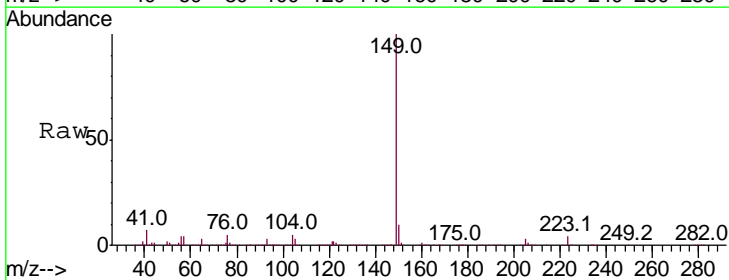
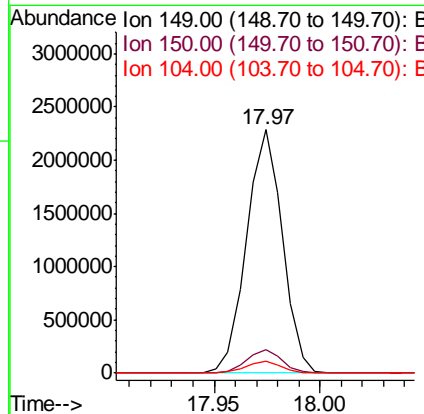
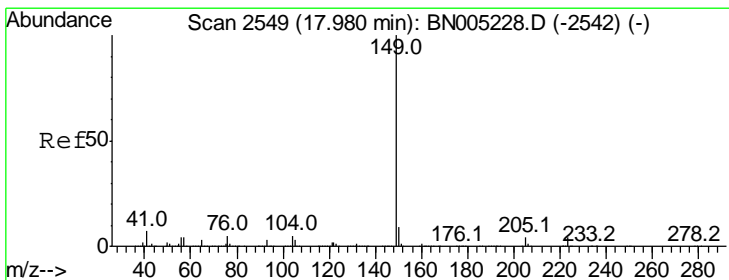
Ion	Ratio	Lower	Upper
167	100		
166	21.2	17.2	25.8
139	12.6	10.6	16.0

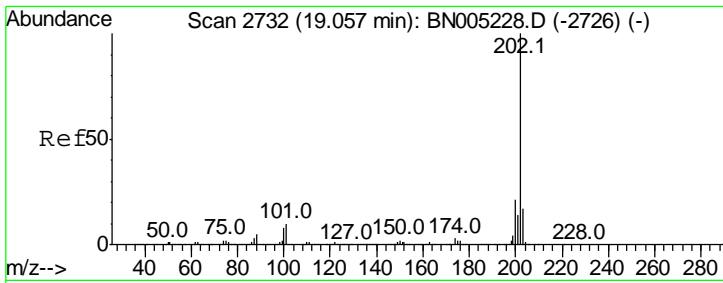


#75
 Di-n-butylphthalate
 Concen: 18.867 ng/ul
 RT: 17.97 min Scan# 2548
 Delta R.T. -0.01 min
 Lab File: BN005285.D
 Acq: 25 Apr 2019 18:24

Tgt Ion:149 Resp: 2696835

Ion	Ratio	Lower	Upper
149	100		
150	9.6	7.3	10.9
104	5.0	4.2	6.2



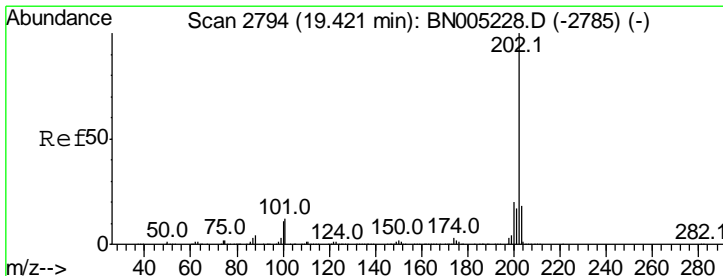
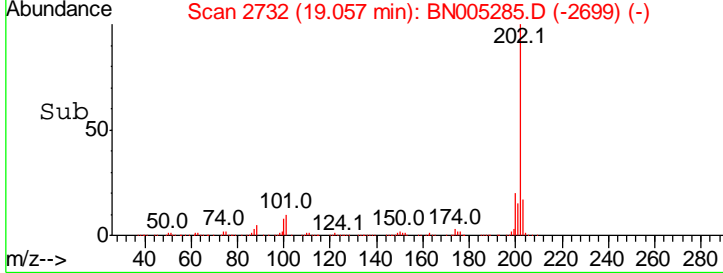
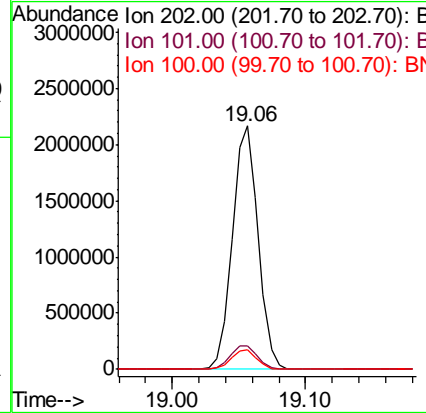
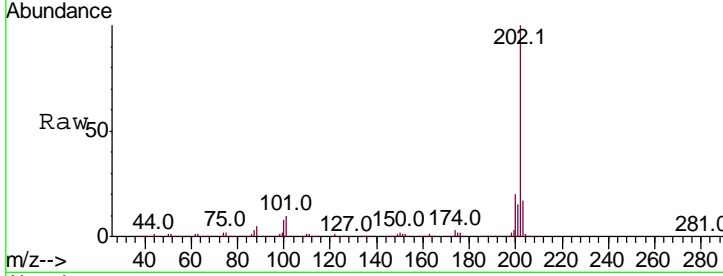


#76
 Fluoranthene
 Concen: 20.159 ng/ul
 RT: 19.06 min Scan# 2732
 Delta R.T. -0.01 min
 Lab File: BN005285.D
 Acq: 25 Apr 2019 18:24

Instrument :
 BNA_N
 ClientSampled :

Tgt Ion: 202 Resp: 2911024

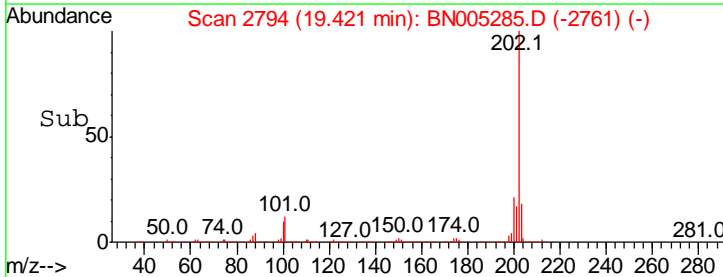
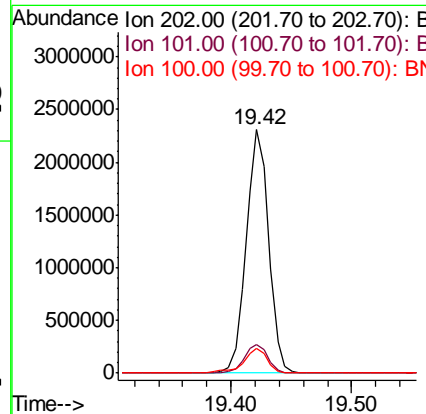
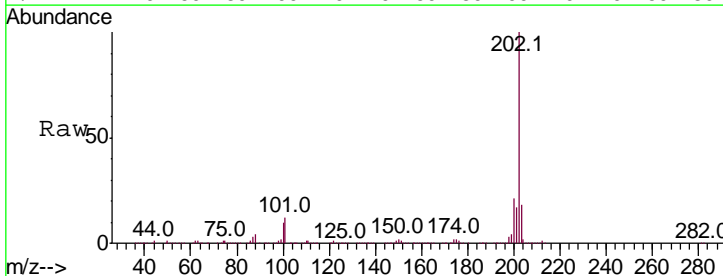
Ion	Ratio	Lower	Upper
202	100		
101	9.8	8.6	12.8
100	7.8	6.3	9.5

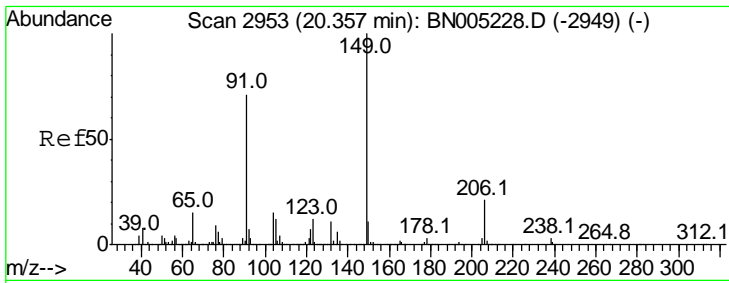


#79
 Pyrene
 Concen: 17.016 ng/ul
 RT: 19.42 min Scan# 2794
 Delta R.T. -0.01 min
 Lab File: BN005285.D
 Acq: 25 Apr 2019 18:24

Tgt Ion: 202 Resp: 2984687

Ion	Ratio	Lower	Upper
202	100		
101	12.0	10.3	15.5
100	10.1	7.9	11.9

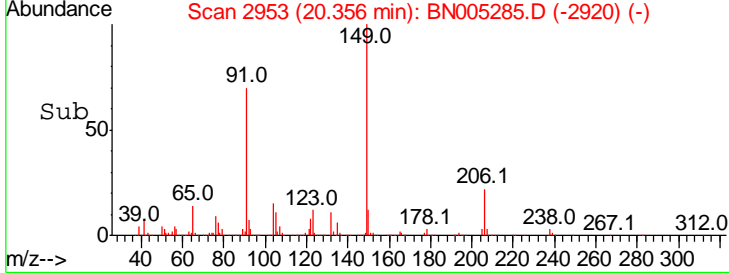
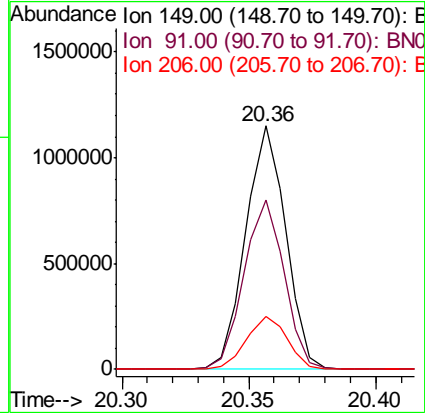
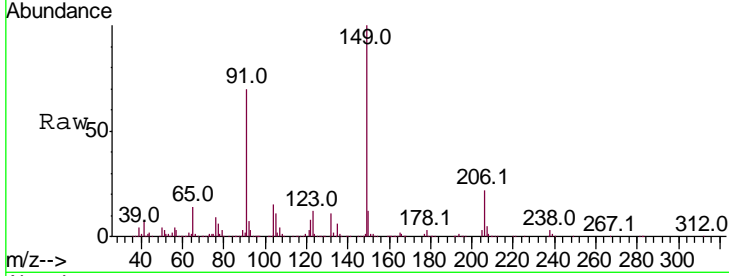




#80
 Butylbenzylphthalate
 Concen: 18.252 ng/ul
 RT: 20.36 min Scan# 2953
 Delta R.T. -0.01 min
 Lab File: BN005285.D
 Acq: 25 Apr 2019 18:24

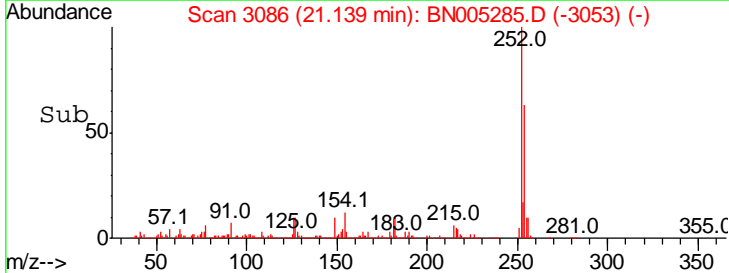
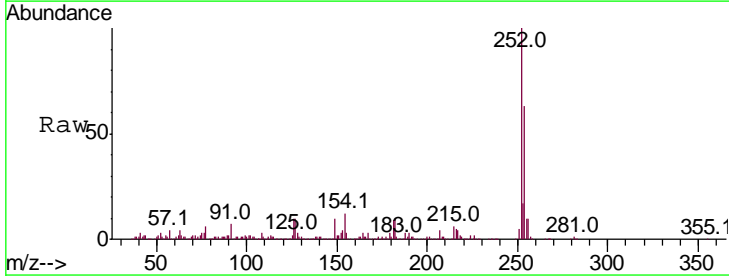
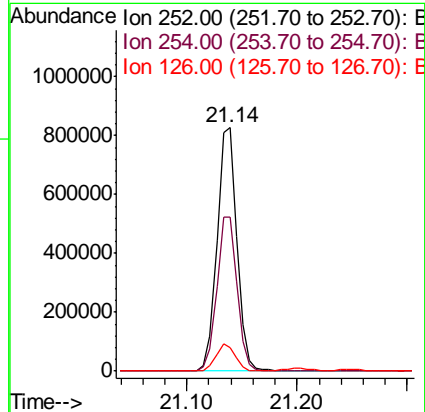
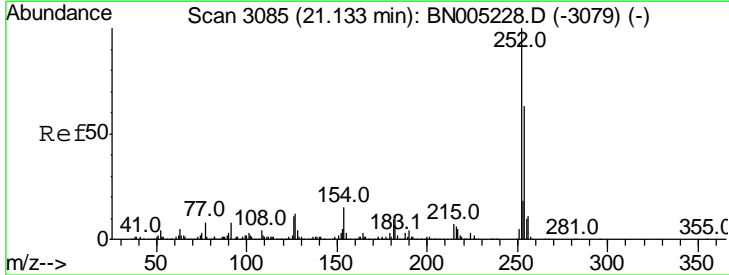
Instrument :
 BNA_N
 ClientSampled :

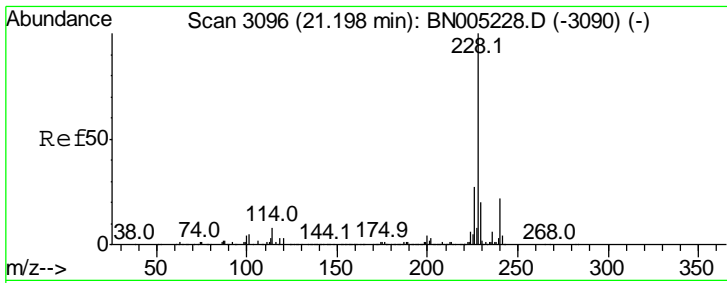
Tgt Ion	Resp	Lower	Upper
149	100		
91	69.6	59.6	89.4
206	21.9	17.8	26.8



#81
 3,3'-Dichlorobenzidine
 Concen: 18.906 ng/ul
 RT: 21.14 min Scan# 3086
 Delta R.T. -0.01 min
 Lab File: BN005285.D
 Acq: 25 Apr 2019 18:24

Tgt Ion	Resp	Lower	Upper
252	100		
254	63.4	51.1	76.7
126	9.8	9.4	14.0

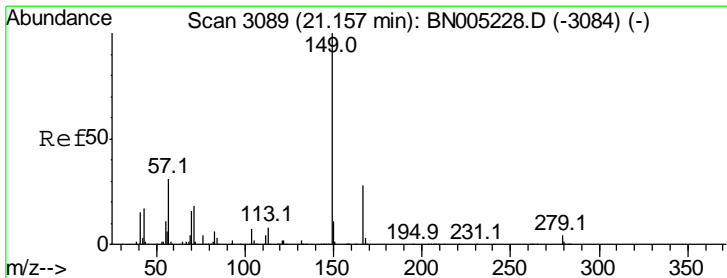
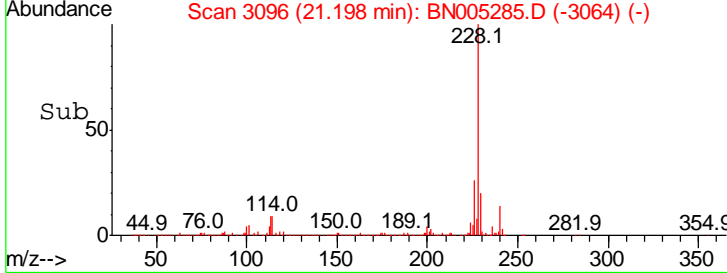
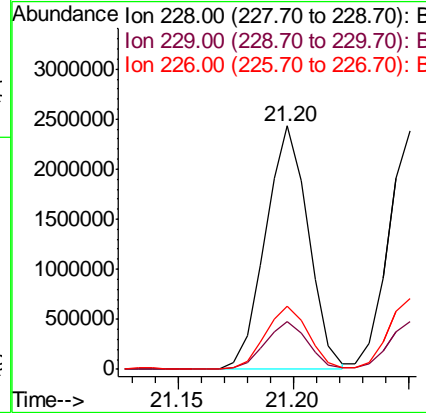
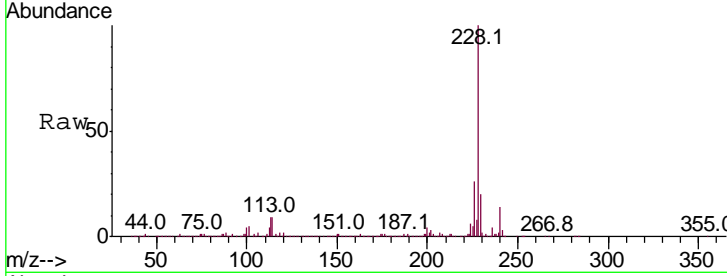




#82
 Benzo(a)anthracene
 Concen: 18.456 ng/ul
 RT: 21.20 min Scan# 3096
 Delta R.T. -0.01 min
 Lab File: BN005285.D
 Acq: 25 Apr 2019 18:24

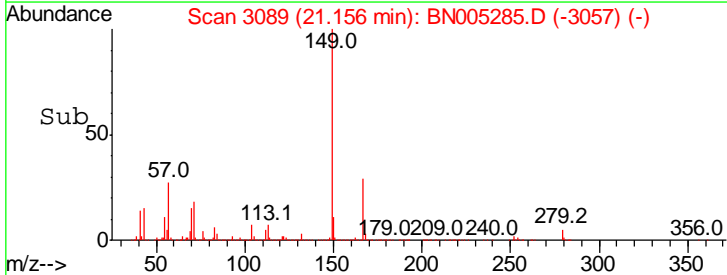
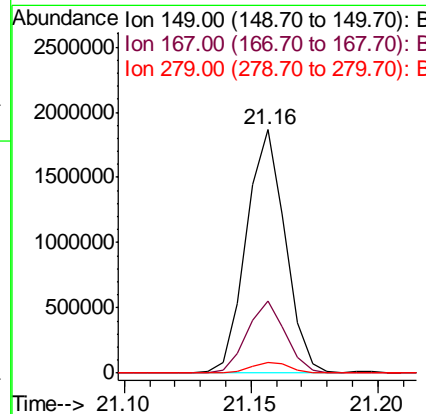
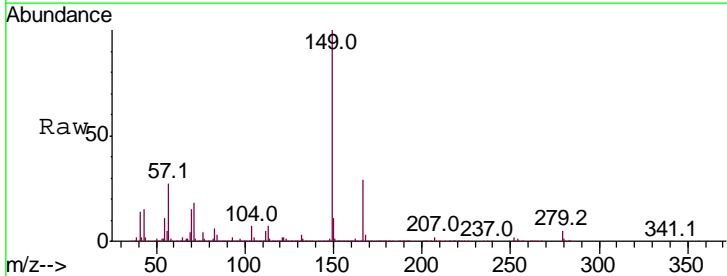
Instrument :
 BNA_N
 ClientSampled :

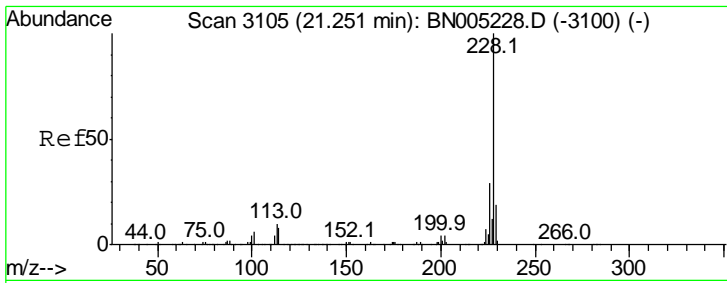
Tgt Ion	Resp	Lower	Upper
228	3127727		
229	19.6	15.8	23.6
226	26.1	21.4	32.2



#83
 Bis(2-ethylhexyl)phthalate
 Concen: 18.539 ng/ul
 RT: 21.16 min Scan# 3089
 Delta R.T. -0.01 min
 Lab File: BN005285.D
 Acq: 25 Apr 2019 18:24

Tgt Ion	Resp	Lower	Upper
149	1982374		
167	29.5	22.3	33.5
279	4.6	3.3	4.9

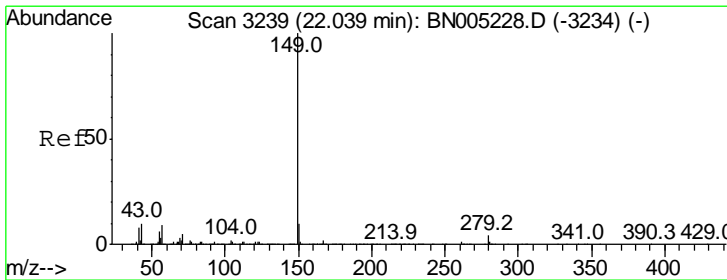
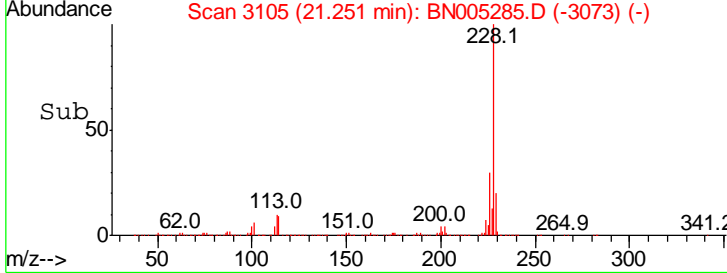
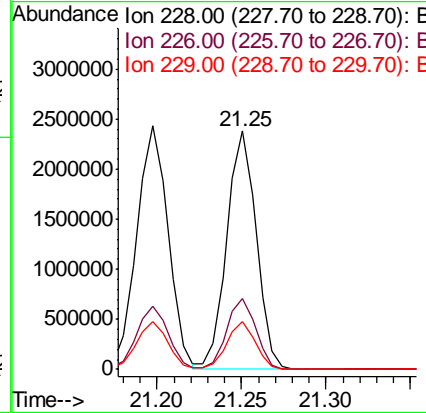
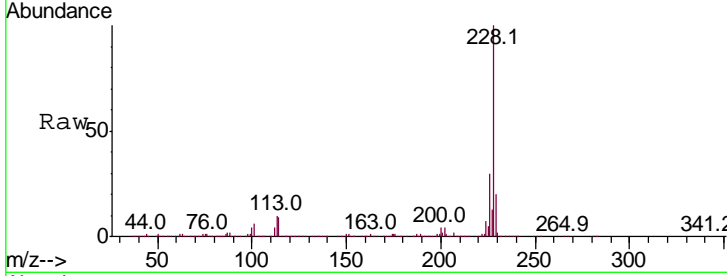




#84
 Chrysene
 Concen: 18.375 ng/ul
 RT: 21.25 min Scan# 3105
 Delta R.T. -0.01 min
 Lab File: BN005285.D
 Acq: 25 Apr 2019 18:24

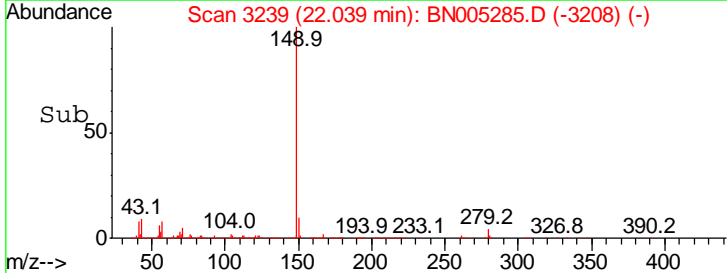
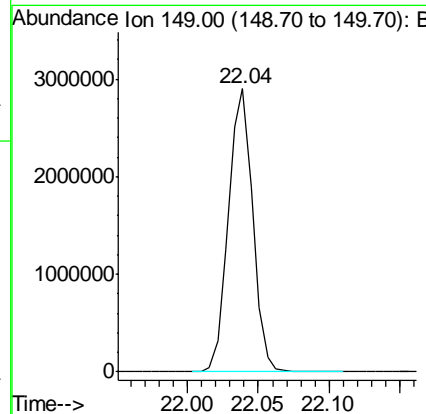
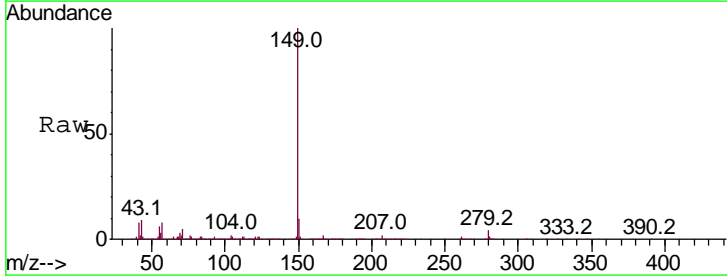
Instrument :
 BNA_N
 ClientSampled :

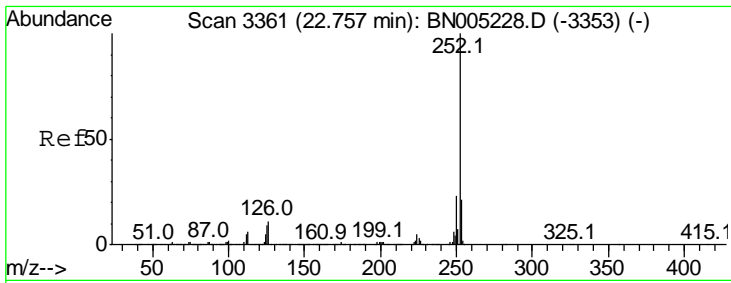
Tgt Ion	Resp	Lower	Upper
228	100		
226	29.9	24.0	36.0
229	20.0	15.4	23.0



#86
 Di-n-octyl phthalate
 Concen: 18.024 ng/ul
 RT: 22.04 min Scan# 3239
 Delta R.T. -0.02 min
 Lab File: BN005285.D
 Acq: 25 Apr 2019 18:24

Tgt Ion:149 Resp: 3454339



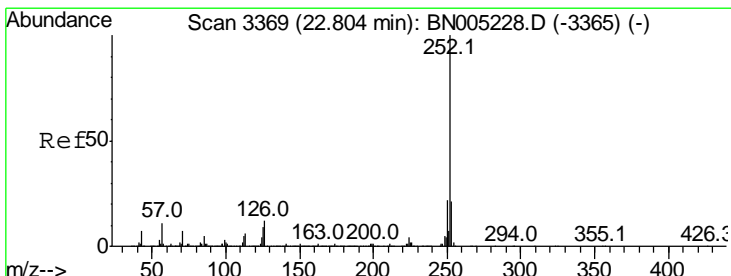
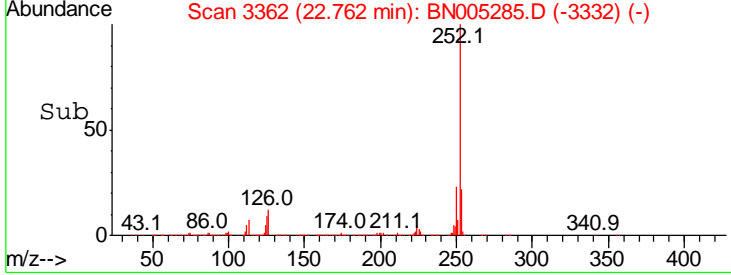
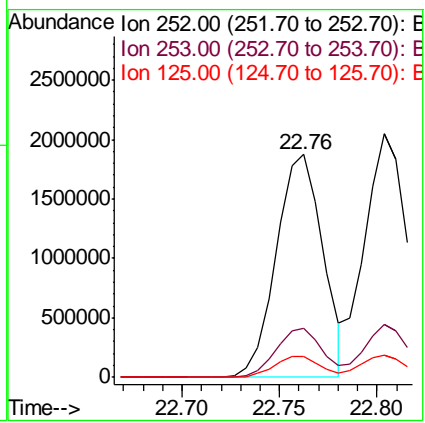
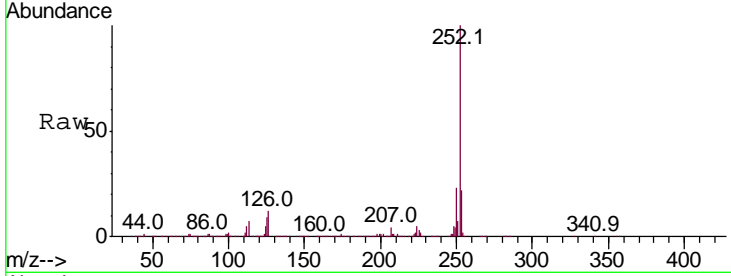


#87
 Benzo(b)fluoranthene
 Concen: 17.636 ng/ul
 RT: 22.76 min Scan# 3362
 Delta R.T. -0.02 min
 Lab File: BN005285.D
 Acq: 25 Apr 2019 18:24

Instrument :
 BNA_N
 ClientSampled :

Tgt Ion:252 Resp: 3102202

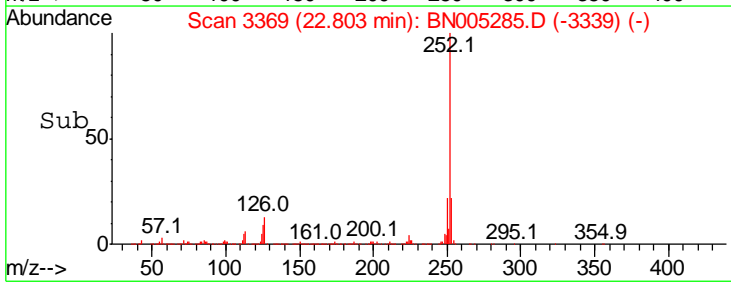
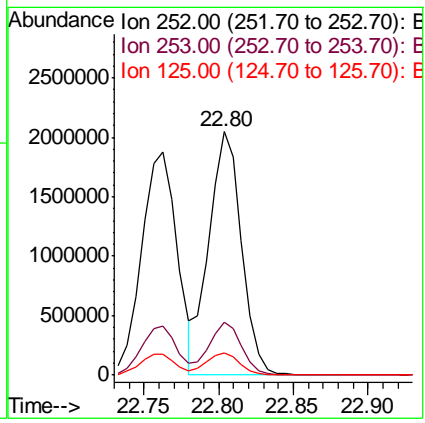
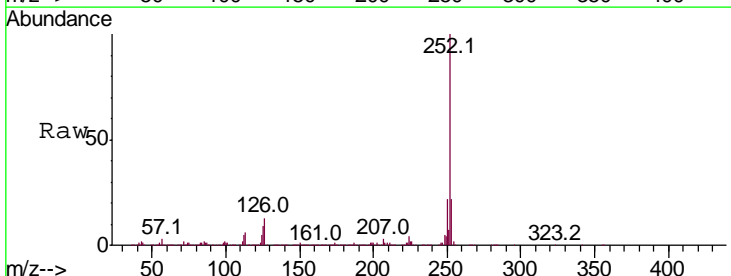
Ion	Ratio	Lower	Upper
252	100		
253	21.8	17.7	26.5
125	9.5	8.4	12.6

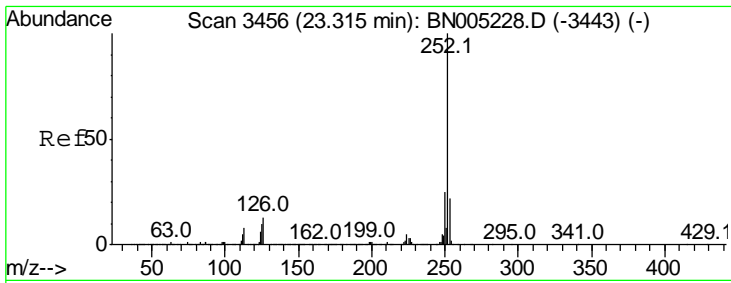


#88
 Benzo(k)fluoranthene
 Concen: 18.520 ng/ul
 RT: 22.80 min Scan# 3369
 Delta R.T. -0.02 min
 Lab File: BN005285.D
 Acq: 25 Apr 2019 18:24

Tgt Ion:252 Resp: 3111411

Ion	Ratio	Lower	Upper
252	100		
253	21.5	17.4	26.0
125	9.3	7.5	11.3



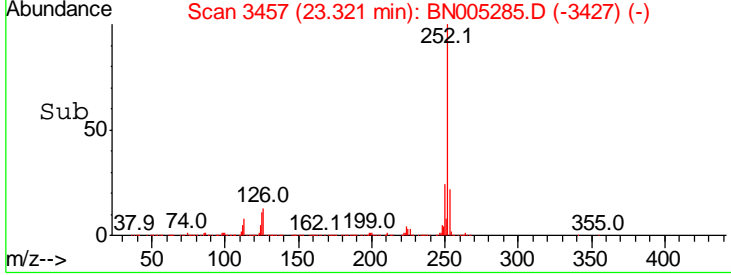
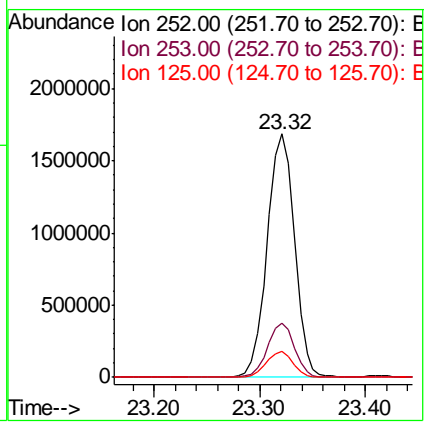
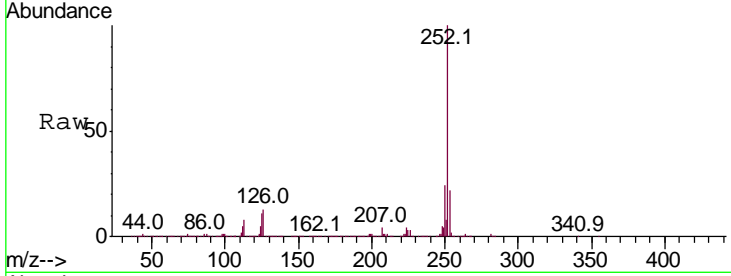


#90
 Benzo(a)pyrene
 Concen: 18.312 ng/ul
 RT: 23.32 min Scan# 3457
 Delta R.T. -0.02 min
 Lab File: BN005285.D
 Acq: 25 Apr 2019 18:24

Instrument :
 BNA_N
 ClientSampled :

Tgt Ion: 252 Resp: 3027727

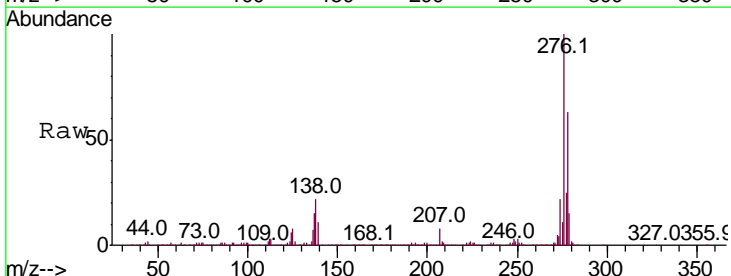
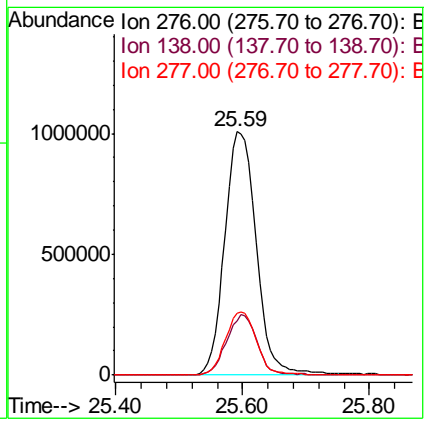
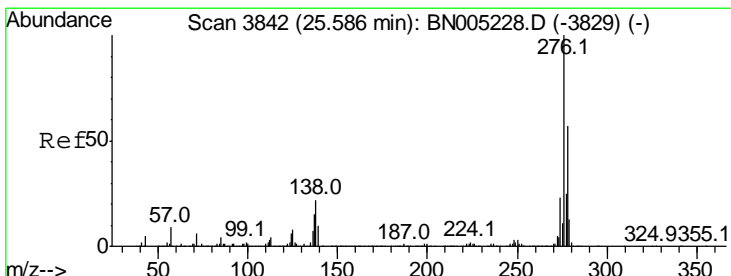
Ion	Ratio	Lower	Upper
252	100		
253	22.1	17.3	25.9
125	10.5	8.6	13.0

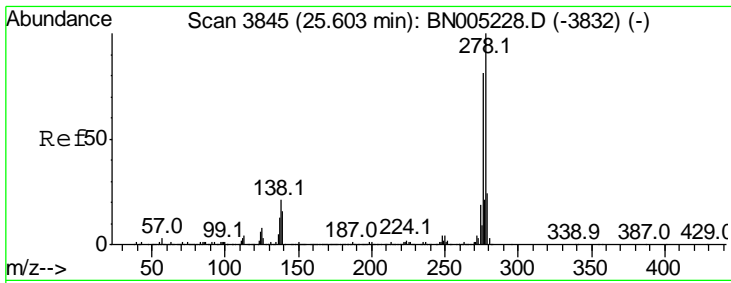


#91
 Indeno(1,2,3-cd)pyrene
 Concen: 18.959 ng/ul
 RT: 25.59 min Scan# 3843
 Delta R.T. -0.04 min
 Lab File: BN005285.D
 Acq: 25 Apr 2019 18:24

Tgt Ion: 276 Resp: 3465773

Ion	Ratio	Lower	Upper
276	100		
138	22.4	17.9	26.9
277	25.3	19.7	29.5



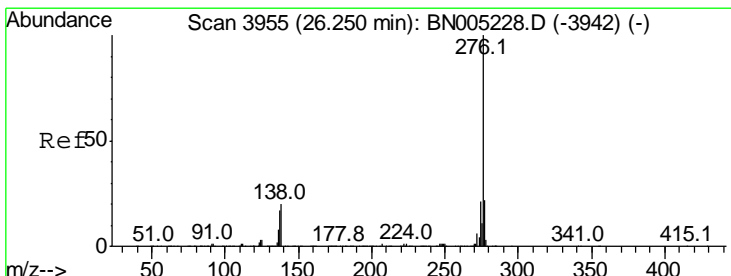
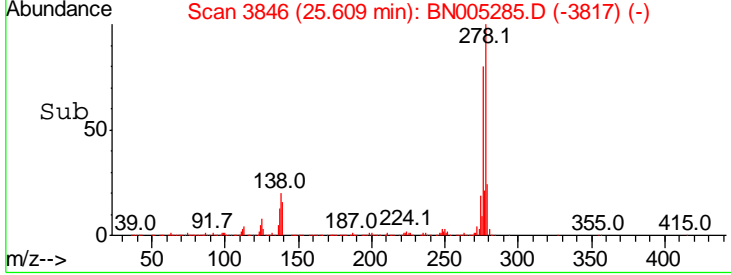
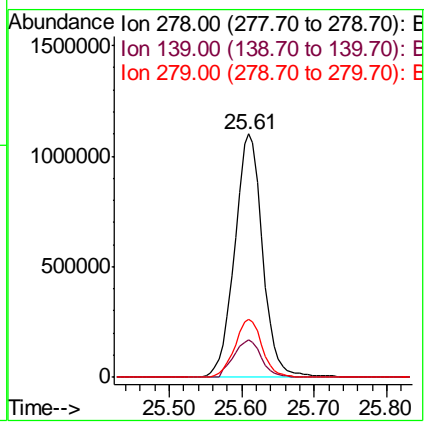
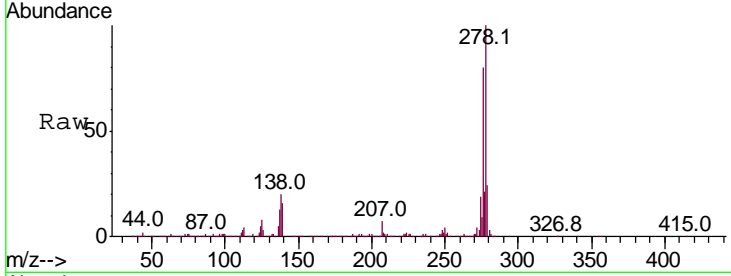


#92
 Dibenzo(a,h)anthracene
 Concen: 18.961 ng/ul
 RT: 25.61 min Scan# 3846
 Delta R.T. -0.03 min
 Lab File: BN005285.D
 Acq: 25 Apr 2019 18:24

Instrument :
 BNA_N
 ClientSampled :

Tgt Ion: 278 Resp: 2941544

Ion	Ratio	Lower	Upper
278	100		
139	15.5	13.1	19.7
279	24.0	19.4	29.0



#93
 Benzo(g,h,i)perylene
 Concen: 16.654 ng/ul
 RT: 26.26 min Scan# 3957
 Delta R.T. -0.03 min
 Lab File: BN005285.D
 Acq: 25 Apr 2019 18:24

Tgt Ion: 276 Resp: 2517227

Ion	Ratio	Lower	Upper
276	100		
138	20.2	16.7	25.1
277	23.7	18.2	27.2

