

Data Path : Z:\svoasrv\HPCHEM1\BNA_N\Data\BN042624\
 Data File : BN031256.D
 Acq On : 26 Apr 2024 23:03
 Operator : MA/JU
 Sample : P2161-18
 Misc :
 ALS Vial : 21 Sample Multiplier: 1

Instrument :
 BNA_N
 ClientSampleId :
 CORD1

Integration Parameters: LSCINT.P

Integrator: RTE
 Smoothing : OFF
 Sampling : 1
 Start Thrs: 0.2
 Stop Thrs : 0

Filtering: 5
 Min Area: 0.1 % of Largest Peak
 Max Peaks: 100
 Peak Location: TOP

If leading or trailing edge < 100 prefer < Baseline drop else tangent >
 Peak separation: 5

Method : Z:\svoasrv\HPCHEM1\BNA_N\Methods\SFAM-EPA-BN041924.MA.M
 Title : SVOA CALIBRATION

Signal : TIC: BN031256.D\data.ms

peak #	R.T. min	first scan	max scan	last scan	PK TY	peak height	corr. area	corr. % max.	% of total
1	3.140	22	26	33	rVB	61273	80142	0.90%	0.092%
2	3.417	70	73	78	rBV3	6642	11012	0.12%	0.013%
3	3.546	92	95	111	rBV	416077	618962	6.98%	0.707%
4	3.858	143	148	154	rVB	13346	21433	0.24%	0.024%
5	4.964	331	336	346	rBV	189183	282568	3.19%	0.323%
6	6.622	612	618	623	rBV7	6481	12874	0.15%	0.015%
7	6.799	642	648	661	rVB	345793	547482	6.17%	0.626%
8	6.969	670	677	687	rBV	1375707	2150607	24.26%	2.458%
9	7.158	701	709	719	rBV	1313688	2044628	23.06%	2.336%
10	7.234	719	722	728	rVB4	5744	10528	0.12%	0.012%
11	7.511	761	769	774	rBV2	7819	14474	0.16%	0.017%
12	7.622	781	788	793	rBV	1102330	1781929	20.10%	2.036%
13	7.969	840	847	856	rBV	131179	216345	2.44%	0.247%
14	8.328	902	908	920	rBV	947444	1556934	17.56%	1.779%
15	8.781	977	985	993	rBV	1683891	2716586	30.64%	3.104%
16	8.887	999	1003	1009	rVB6	9621	15322	0.17%	0.018%
17	9.169	1043	1051	1058	rBV3	16381	27782	0.31%	0.032%
18	9.346	1076	1081	1088	rBV4	12988	22271	0.25%	0.025%
19	9.493	1095	1106	1114	rBV	1394732	2281841	25.74%	2.608%
20	9.658	1129	1134	1143	rVV3	12761	28225	0.32%	0.032%
21	9.905	1170	1176	1181	rBV	70890	109229	1.23%	0.125%
22	10.028	1189	1197	1216	rBV	1911005	3200018	36.09%	3.657%
23	10.193	1219	1225	1232	rVV	76803	154531	1.74%	0.177%
24	10.263	1232	1237	1245	rVB	269437	439544	4.96%	0.502%
25	10.399	1252	1260	1270	rBV	1526491	2580476	29.10%	2.949%
26	10.546	1277	1285	1299	rBV	1763656	2980933	33.62%	3.406%
27	10.781	1319	1325	1331	rBV	37947	61056	0.69%	0.070%
28	11.152	1383	1388	1392	rBV4	12142	23917	0.27%	0.027%
29	11.193	1392	1395	1406	rVB8	9949	25346	0.29%	0.029%
30	11.657	1470	1474	1479	rBV3	5822	9781	0.11%	0.011%
31	11.999	1526	1532	1538	rVB	37700	61969	0.70%	0.071%
32	12.410	1596	1602	1605	rBV	77881	126137	1.42%	0.144%
33	12.440	1605	1607	1615	rVB	42873	59483	0.67%	0.068%
34	13.057	1705	1712	1721	rBV	604945	889861	10.04%	1.017%
35	13.163	1726	1730	1738	rVB2	20850	33569	0.38%	0.038%
36	13.234	1738	1742	1748	rBV4	6533	11683	0.13%	0.013%

Data Path : Z:\svoasrv\HPCHEM1\BNA_N\Data\BN042624\
 Data File : BN031256.D
 Acq On : 26 Apr 2024 23:03
 Operator : MA/JU
 Sample : P2161-18
 Misc :
 ALS Vial : 21 Sample Multiplier: 1

Instrument :
 BNA_N
ClientSampleId :
 CORD1

Integration Parameters: LSCINT.P
 Integrator: RTE
 Smoothing : OFF
 Sampling : 1
 Start Thrs: 0.2
 Stop Thrs : 0
 Filtering: 5
 Min Area: 0.1 % of Largest Peak
 Max Peaks: 100
 Peak Location: TOP

If leading or trailing edge < 100 prefer < Baseline drop else tangent >
 Peak separation: 5

Method : Z:\svoasrv\HPCHEM1\BNA_N\Methods\SFAM-EPA-BN041924.MA.M
 Title : SVOA CALIBRATION

37	13.687	1812	1819	1833	rBV	3670463	5202131	58.67%	5.945%
38	13.963	1856	1866	1877	rBV	4214261	6296637	71.02%	7.195%
39	14.169	1899	1901	1907	rVB6	7078	9787	0.11%	0.011%
40	14.269	1911	1918	1927	rBV	2365441	3518357	39.68%	4.021%
41	14.375	1933	1936	1942	rVB6	7005	11276	0.13%	0.013%
42	14.487	1950	1955	1967	rBV	321585	518273	5.85%	0.592%
43	14.587	1967	1972	1977	rVB	76663	110132	1.24%	0.126%
44	14.698	1985	1991	1999	rVB	12489	29096	0.33%	0.033%
45	15.028	2043	2047	2050	rVB	10831	14958	0.17%	0.017%
46	15.075	2050	2055	2058	rBV2	10520	14722	0.17%	0.017%
47	15.128	2058	2064	2068	rVB3	17405	29311	0.33%	0.033%
48	15.269	2081	2088	2102	rBV	5294111	7633379	86.10%	8.723%
49	15.393	2102	2109	2124	rBV	1938334	2764519	31.18%	3.159%
50	15.504	2124	2128	2133	rBV	24986	37931	0.43%	0.043%
51	15.640	2146	2151	2155	rBV7	6227	10504	0.12%	0.012%
52	15.687	2156	2159	2164	rVB7	5754	8918	0.10%	0.010%
53	15.993	2203	2211	2217	rBV	31397	56065	0.63%	0.064%
54	16.051	2217	2221	2227	rVB2	22018	32122	0.36%	0.037%
55	16.163	2234	2240	2245	rBV8	5721	11270	0.13%	0.013%
56	16.498	2293	2297	2302	rVB5	6934	9853	0.11%	0.011%
57	16.569	2305	2309	2315	rVB3	14098	19539	0.22%	0.022%
58	16.698	2328	2331	2334	rVB3	12800	14360	0.16%	0.016%
59	16.787	2341	2346	2351	rBV2	35332	58592	0.66%	0.067%
60	16.834	2351	2354	2359	rVB4	13994	18102	0.20%	0.021%
61	16.951	2371	2374	2378	rVB6	8688	11151	0.13%	0.013%
62	17.022	2379	2386	2396	rVV	3024036	4125205	46.53%	4.714%
63	17.122	2396	2403	2412	rBV2	5483692	7820360	88.20%	8.937%
64	17.316	2432	2436	2441	rBV	25292	34623	0.39%	0.040%
65	17.522	2467	2471	2475	rBV	32670	43019	0.49%	0.049%
66	17.692	2498	2500	2508	rVB7	12770	18545	0.21%	0.021%
67	17.792	2514	2517	2524	rBV8	6334	9850	0.11%	0.011%
68	17.922	2534	2539	2550	rBV	246554	392593	4.43%	0.449%
69	18.216	2585	2589	2592	rBV	31649	42259	0.48%	0.048%
70	18.257	2592	2596	2605	rVB3	35410	73680	0.83%	0.084%
71	18.351	2610	2612	2617	rVB6	10285	12540	0.14%	0.014%
72	18.410	2618	2622	2628	rBV5	18821	30370	0.34%	0.035%
73	18.857	2695	2698	2703	rVB3	26588	34369	0.39%	0.039%
74	18.986	2715	2720	2724	rBV2	87294	122653	1.38%	0.140%
75	19.057	2727	2732	2736	rBV	101748	141636	1.60%	0.162%
76	19.210	2754	2758	2768	rBV	133785	212003	2.39%	0.242%

Data Path : Z:\svoasrv\HPCHEM1\BNA_N\Data\BN042624\
 Data File : BN031256.D
 Acq On : 26 Apr 2024 23:03
 Operator : MA/JU
 Sample : P2161-18
 Misc :
 ALS Vial : 21 Sample Multiplier: 1

Instrument :
 BNA_N
 ClientSampleId :
 CORD1

Integration Parameters: LSCINT.P
 Integrator: RTE
 Smoothing : OFF Filtering: 5
 Sampling : 1 Min Area: 0.1 % of Largest Peak
 Start Thrs: 0.2 Max Peaks: 100
 Stop Thrs : 0 Peak Location: TOP

If leading or trailing edge < 100 prefer < Baseline drop else tangent >
 Peak separation: 5

Method : Z:\svoasrv\HPCHEM1\BNA_N\Methods\SFAM-EPA-BN041924.MA.M
 Title : SVOA CALIBRATION

77	19.363	2781	2784	2788	rBV2	31172	35958	0.41%	0.041%
78	19.428	2788	2795	2802	rBV	6550884	8866191	100.00%	10.132%
79	20.416	2960	2963	2967	rBV5	23605	26984	0.30%	0.031%
80	20.957	3051	3055	3063	rBV3	114815	235923	2.66%	0.270%
81	21.257	3100	3106	3113	rBV	2513584	3483928	39.29%	3.981%
82	23.957	3555	3565	3576	rBV2	2957294	6794244	76.63%	7.764%
83	24.151	3590	3598	3609	rVB	1300317	3300831	37.23%	3.772%

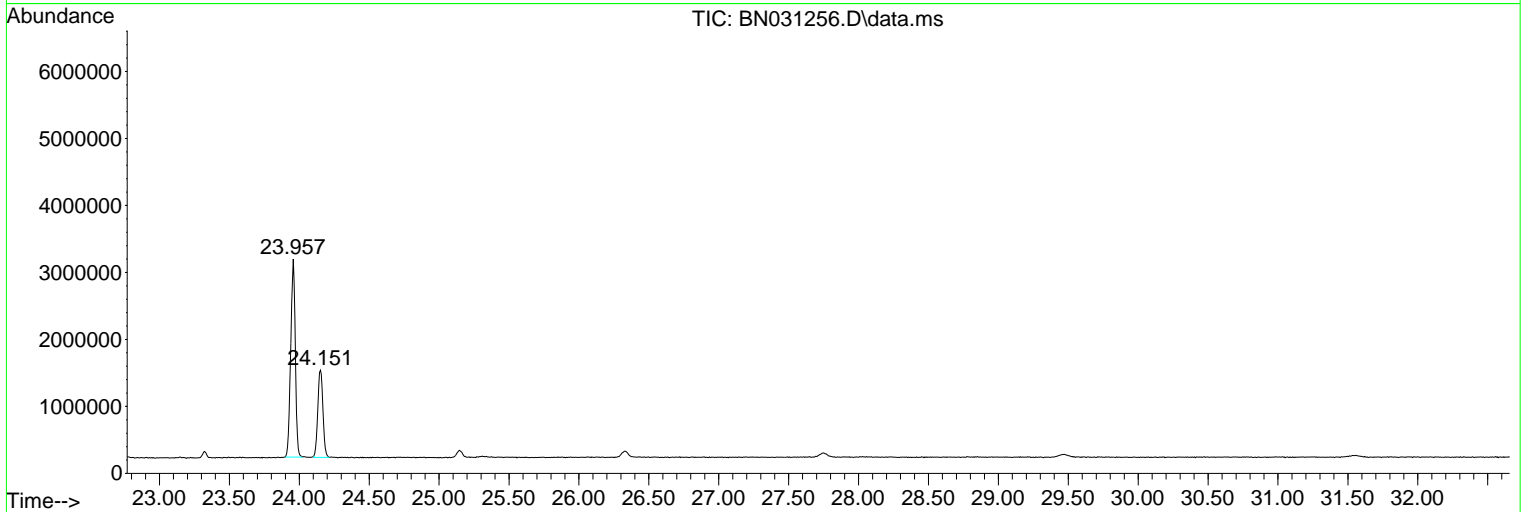
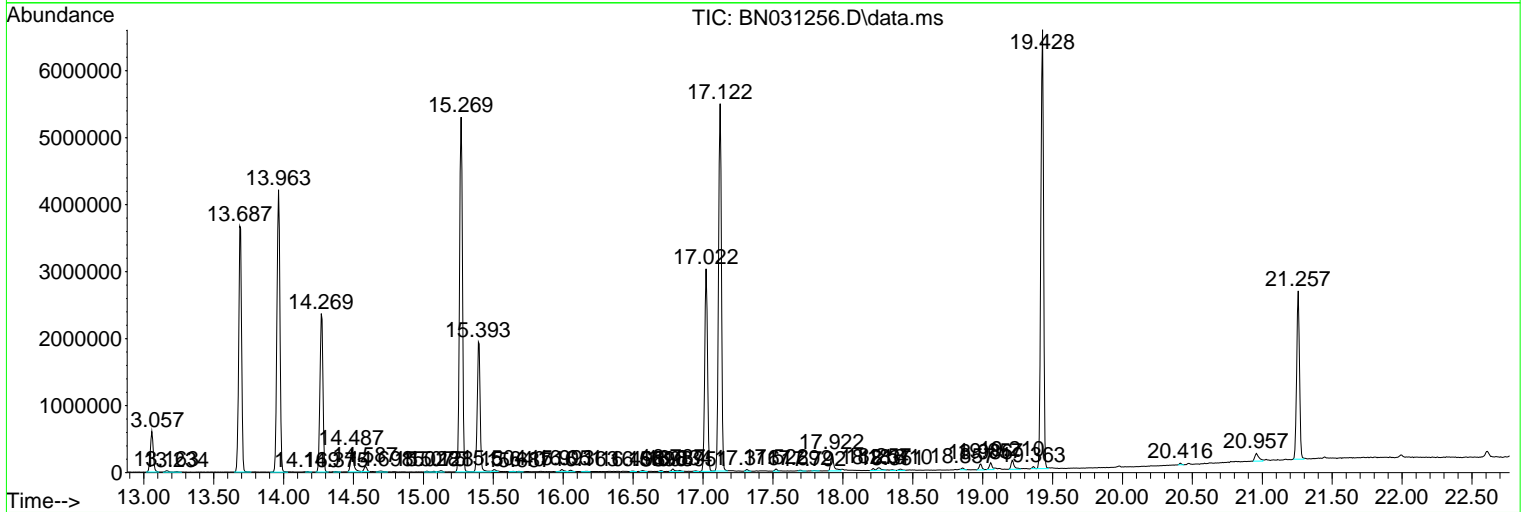
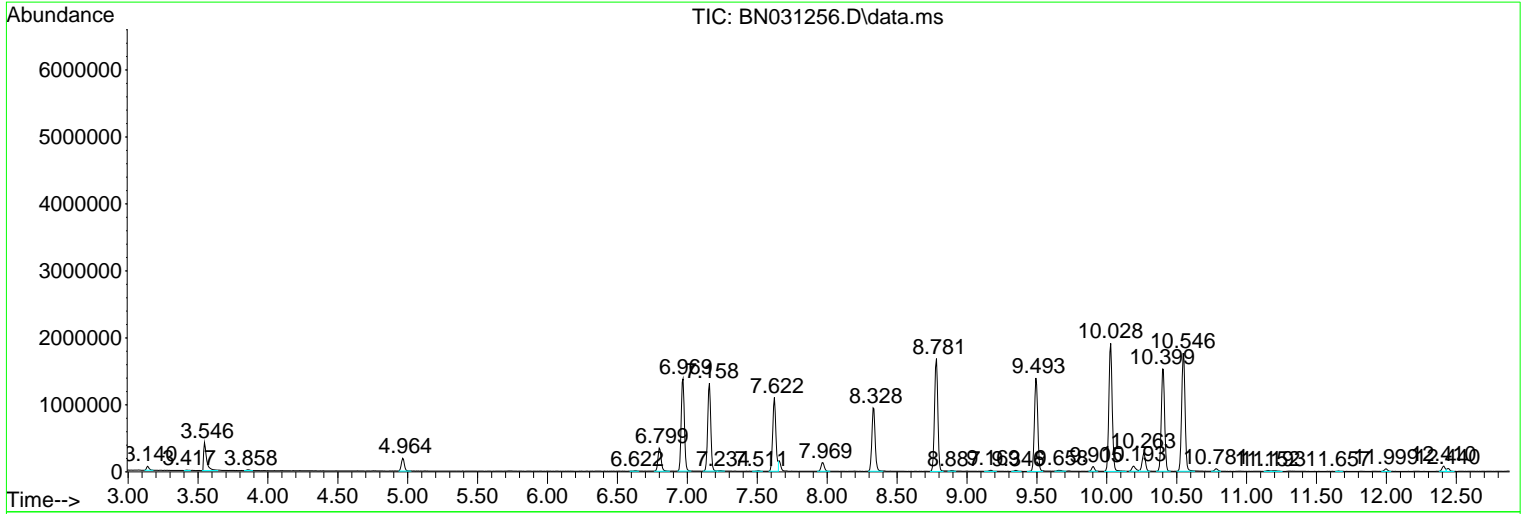
Sum of corrected areas: 87508227

Data Path : Z:\svoasrv\HPCHEM1\BNA_N\Data\BN042624\
 Data File : BN031256.D
 Acq On : 26 Apr 2024 23:03
 Operator : MA/JU
 Sample : P2161-18
 Misc :
 ALS Vial : 21 Sample Multiplier: 1

Instrument :
 BNA_N
ClientSampleId :
 CORD1

Quant Method : Z:\svoasrv\HPCHEM1\BNA_N\Methods\SFAM-EPA-BN041924.MA.M
 Quant Title : SVOA CALIBRATION

TIC Library : C:\Database\NI ST20.L
 TIC Integration Parameters: LSCINT.P



Data Path : Z:\svoasrv\HPCHEM1\BNA_N\Data\BN042624\
 Data File : BN031256.D
 Acq On : 26 Apr 2024 23:03
 Operator : MA/JU
 Sample : P2161-18
 Misc :
 ALS Vial : 21 Sample Multiplier: 1

Instrument :
 BNA_N
 ClientSampleId :
 CORD1

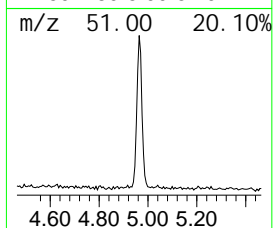
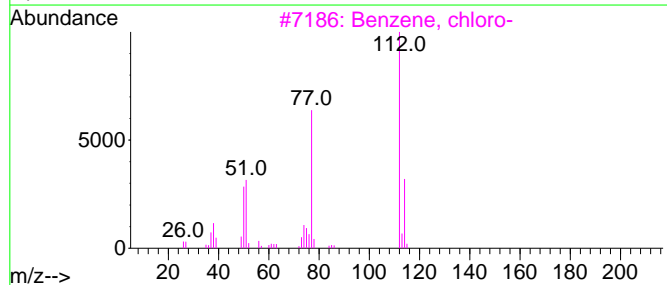
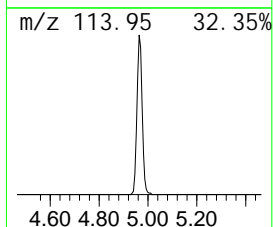
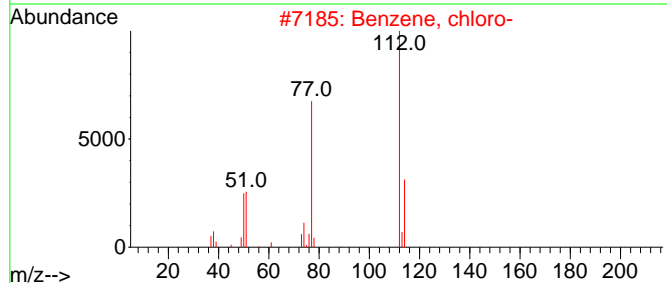
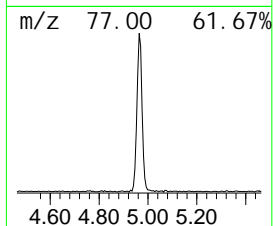
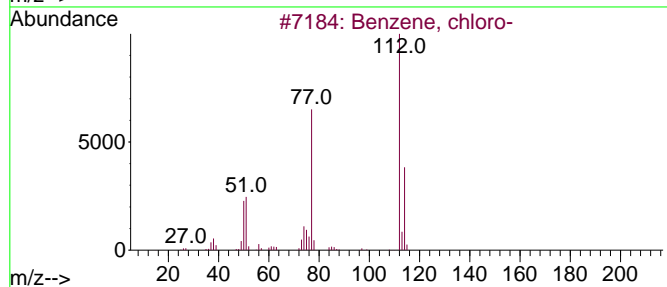
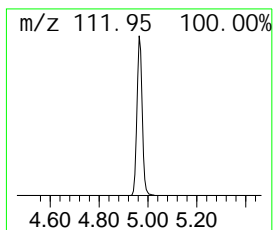
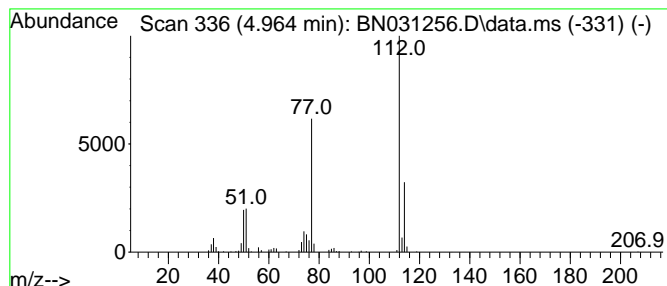
Quant Method : Z:\svoasrv\HPCHEM1\BNA_N\Methods\SFAM-EPA-BN041924.MA.M
 Quant Title : SVOA CALIBRATION

TIC Library : C:\Database\NIST20.L
 TIC Integration Parameters: LSCINT.P

 Peak Number 1 Benzene, chloro- Concentration Rank 2

R. T.	EstConc	Area	Relative to ISTD	R. T.
4.964	3.17 ng/ul	282568	1,4-Dichlorobenzene-d4	7.622

Hit#	of	5	Tentative ID	MW	Mol Form	CAS#	Qual
1			Benzene, chloro-	112	C6H5Cl	000108-90-7	96
2			Benzene, chloro-	112	C6H5Cl	000108-90-7	96
3			Benzene, chloro-	112	C6H5Cl	000108-90-7	95
4			Benzene, chloro-	112	C6H5Cl	000108-90-7	94
5			Benzene, chloro-	112	C6H5Cl	000108-90-7	94



Data Path : Z:\svoasrv\HPCHEM1\BNA_N\Data\BN042624\
 Data File : BN031256.D
 Acq On : 26 Apr 2024 23:03
 Operator : MA/JU
 Sample : P2161-18
 Misc :
 ALS Vial : 21 Sample Multiplier: 1

Instrument :
 BNA_N
 ClientSampleId :
 CORD1

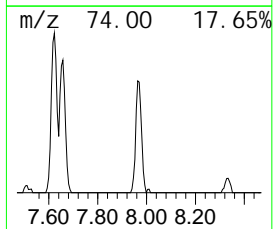
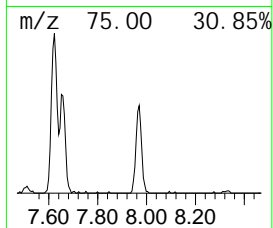
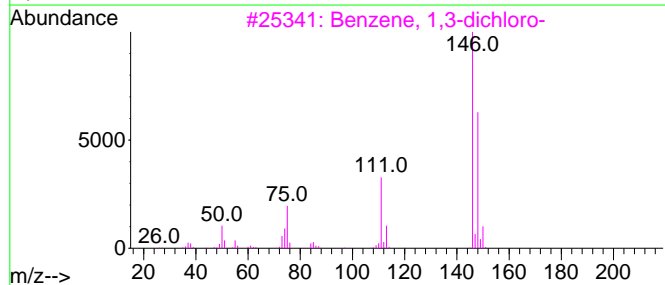
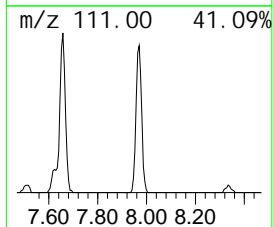
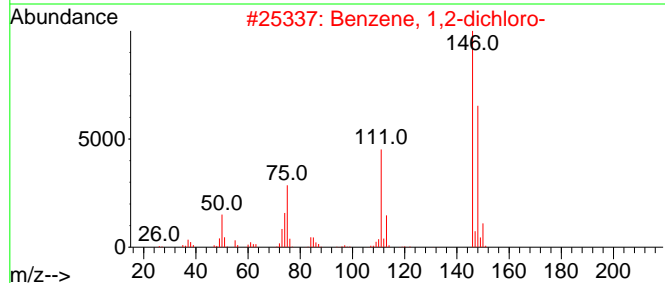
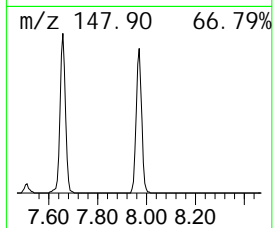
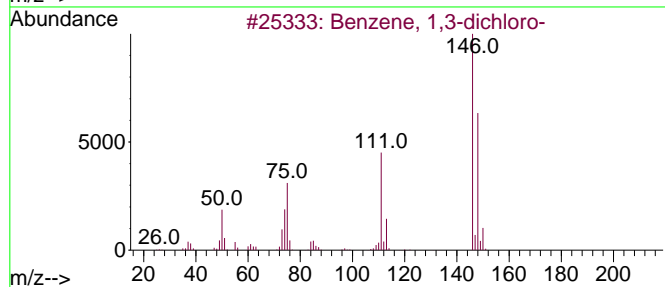
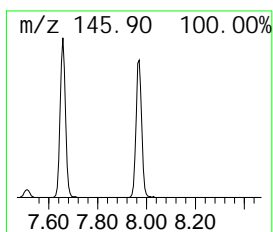
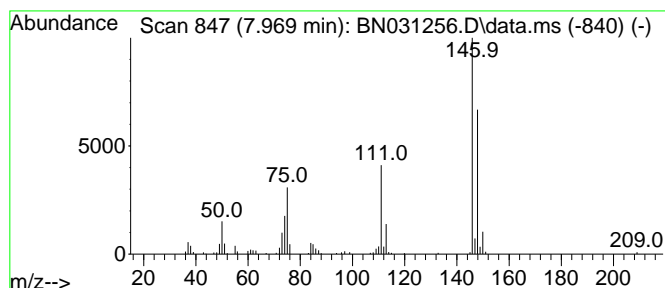
Quant Method : Z:\svoasrv\HPCHEM1\BNA_N\Methods\SFAM-EPA-BN041924.MA.M
 Quant Title : SVOA CALIBRATION

TIC Library : C:\Database\NIST20.L
 TIC Integration Parameters: LSCINT.P

 Peak Number 2 Benzene, 1,3-dichloro- Concentration Rank 3

R. T.	EstConc	Area	Relative to ISTD	R. T.
7.969	2.43 ng/ul	216345	1,4-Dichlorobenzene-d4	7.622

Hit#	of	5	Tentative ID	MW	Mol Form	CAS#	Qual
1			Benzene, 1,3-dichloro-	146	C6H4Cl2	000541-73-1	97
2			Benzene, 1,2-dichloro-	146	C6H4Cl2	000095-50-1	97
3			Benzene, 1,3-dichloro-	146	C6H4Cl2	000541-73-1	96
4			Benzene, 1,4-dichloro-	146	C6H4Cl2	000106-46-7	96
5			Benzene, 1,2-dichloro-	146	C6H4Cl2	000095-50-1	96



Data Path : Z:\svoasrv\HPCHEM1\BNA_N\Data\BN042624\
 Data File : BN031256.D
 Acq On : 26 Apr 2024 23:03
 Operator : MA/JU
 Sample : P2161-18
 Misc :
 ALS Vial : 21 Sample Multiplier: 1

Instrument :
 BNA_N
 ClientSampleId :
 CORD1

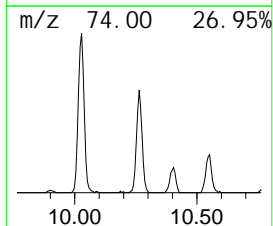
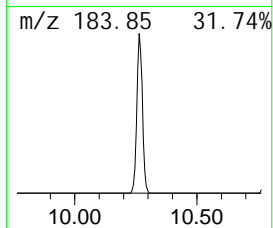
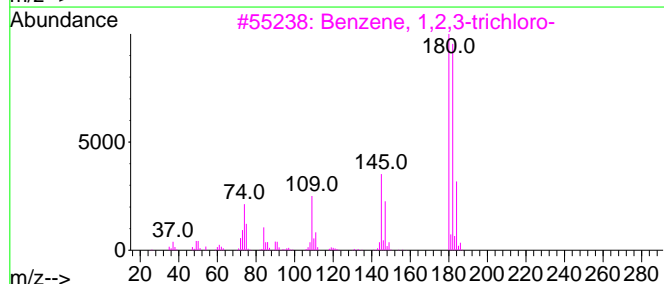
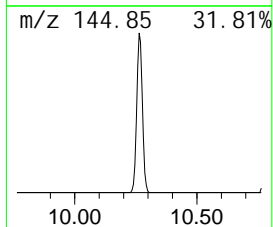
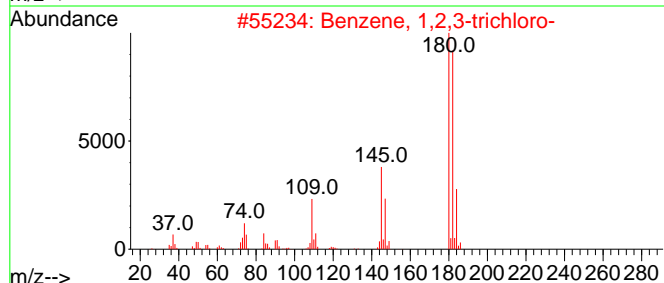
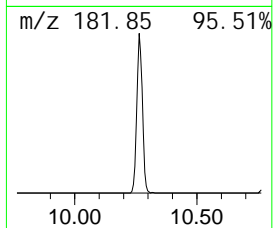
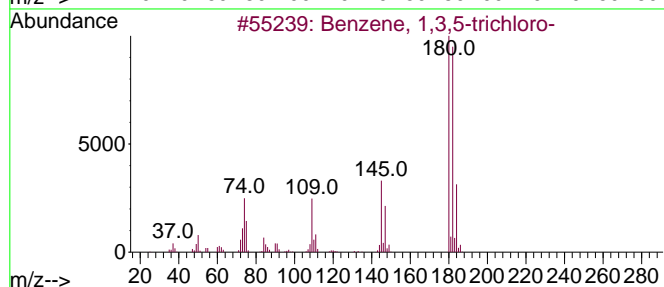
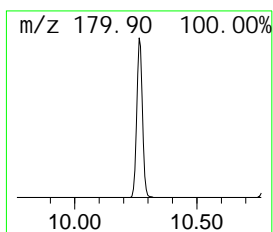
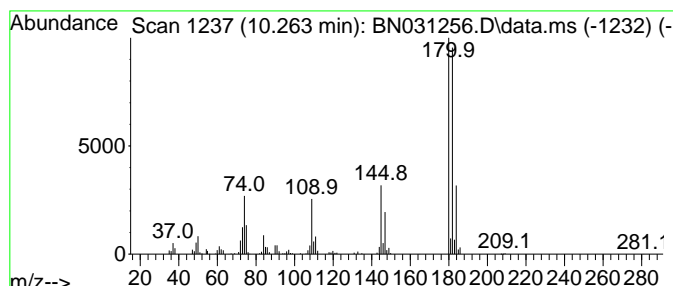
Quant Method : Z:\svoasrv\HPCHEM1\BNA_N\Methods\SFAM-EPA-BN041924.MA.M
 Quant Title : SVOA CALIBRATION

TIC Library : C:\Database\NIST20.L
 TIC Integration Parameters: LSCINT.P

 Peak Number 3 Benzene, 1,3,5-trichloro- Concentration Rank 1

R. T.	EstConc	Area	Relative to ISTD	R. T.
10.263	3.41 ng/ul	439544	Naphthalene-d8	10.399

Hit#	of	Tentative ID	MW	Mol Form	CAS#	Qual
1	5	Benzene, 1,3,5-trichloro-	180	C6H3Cl3	000108-70-3	98
2		Benzene, 1,2,3-trichloro-	180	C6H3Cl3	000087-61-6	98
3		Benzene, 1,2,3-trichloro-	180	C6H3Cl3	000087-61-6	98
4		Benzene, 1,2,4-trichloro-	180	C6H3Cl3	000120-82-1	97
5		Benzene, 1,3,5-trichloro-	180	C6H3Cl3	000108-70-3	97



Data Path : Z:\svoasrv\HPCHEM1\BNA_N\Data\BN042624\
Data File : BN031256.D
Acq On : 26 Apr 2024 23:03
Operator : MA/JU
Sample : P2161-18
Misc :
ALS Vial : 21 Sample Multiplier: 1

Instrument :
BNA_N
ClientSampleId :
CORD1

Quant Method : Z:\svoasrv\HPCHEM1\BNA_N\Methods\SFAM-EPA-BN041924.MA.M
Quant Title : SVOA CALIBRATION

TIC Library : C:\Database\NIST20.L
TIC Integration Parameters: LSCINT.P

TIC Top Hit name	RT	EstConc	Units	Response	--Internal Standard--			
					#	RT	Resp	Conc
Benzene, chloro-	4.964	3.2	ng/ul	282568	1	7.622	1781930	20.0
Benzene, 1,3-di...	7.969	2.4	ng/ul	216345	1	7.622	1781930	20.0
Benzene, 1,3,5-...	10.263	3.4	ng/ul	439544	2	10.399	2580480	20.0