

Data Path : Z:\SVOASRV\HPCHEM1\BNA_N\DATA\BN043019\
 Data File : BN005399.D
 Acq On : 01 May 2019 07:46
 Operator : JU/SJ
 Sample : K2455-02MEDL2 30X
 Misc :
 ALS Vial : 32 Sample Multiplier: 1

Instrument :
 BNA_N
 ClientSampleId :
 GAHQ4MEDL2

Integration Parameters: LSCINT.P

Integrator: RTE
 Smoothing : OFF
 Sampling : 1
 Start Thrs: 0.2
 Stop Thrs : 0

Filtering: 5
 Min Area: 0.1 % of largest Peak
 Max Peaks: 100
 Peak Location: TOP

If leading or trailing edge < 100 prefer < Baseline drop else tangent >
 Peak separation: 5

Method : Z:\SVOASRV\HPCHEM1\BNA_N\METHODS\SOM-EPA-BN041919MA.M
 Title : SVOA CALIBRATION

Signal : TIC

peak #	R.T. min	first scan	max scan	last scan	PK TY	peak height	corr. area	corr. % max.	% of total
1	6.775	638	644	649	rVV2	46979	95834	0.83%	0.104%
2	6.834	649	654	659	rVB	63028	94287	0.81%	0.102%
3	7.252	718	725	734	rVV2	388868	675829	5.82%	0.732%
4	7.340	734	740	747	rVB	77057	128155	1.10%	0.139%
5	7.593	774	783	794	rBV	1580887	2455543	21.14%	2.661%
6	7.705	797	802	807	rVV	88281	137209	1.18%	0.149%
7	8.116	862	872	883	rVV	564084	964490	8.30%	1.045%
8	8.681	963	968	973	rVV2	81167	136767	1.18%	0.148%
9	8.734	973	977	987	rVV2	48699	127619	1.10%	0.138%
10	8.846	993	996	1005	rVV	93389	176979	1.52%	0.192%
11	9.263	1061	1067	1075	rVV2	83980	141666	1.22%	0.154%
12	9.340	1075	1080	1085	rVB2	69500	96247	0.83%	0.104%
13	9.793	1147	1157	1162	rVV3	182026	480706	4.14%	0.521%
14	9.858	1162	1168	1173	rVV	180909	376230	3.24%	0.408%
15	9.899	1173	1175	1185	rVV3	87928	139555	1.20%	0.151%
16	9.987	1185	1190	1198	rVV2	60744	106928	0.92%	0.116%
17	10.352	1242	1252	1256	rVV	2207073	3825819	32.94%	4.146%
18	10.405	1256	1261	1272	rVV	6920370	11615296	100.00%	12.589%
19	10.516	1272	1280	1288	rVV3	99844	282632	2.43%	0.306%
20	11.393	1423	1429	1433	rBV3	51791	84916	0.73%	0.092%
21	11.799	1492	1498	1504	rVV	126853	193121	1.66%	0.209%
22	11.910	1513	1517	1524	rVB2	59286	112919	0.97%	0.122%
23	12.022	1527	1536	1545	rBV	6583472	10478005	90.21%	11.356%
24	12.246	1563	1574	1585	rVV	2873625	4662629	40.14%	5.053%
25	13.052	1704	1711	1725	rVB2	451880	757646	6.52%	0.821%
26	13.252	1738	1745	1757	rVB	359967	767093	6.60%	0.831%
27	13.381	1759	1767	1769	rBV	1049602	1649771	14.20%	1.788%
28	13.546	1786	1795	1800	rVV	1239097	2206080	18.99%	2.391%
29	13.599	1800	1804	1808	rVV	725809	1078087	9.28%	1.168%
30	13.640	1808	1811	1813	rVV	138798	195802	1.69%	0.212%
31	13.675	1813	1817	1824	rVV	414293	653076	5.62%	0.708%
32	13.781	1829	1835	1839	rVV	582588	887225	7.64%	0.962%
33	13.810	1839	1840	1846	rVB	152238	162226	1.40%	0.176%
34	13.946	1852	1863	1870	rBV3	992807	1750788	15.07%	1.898%

Data Path : Z:\SVOASRV\HPCHEM1\BNA_N\DATA\BN043019\
 Data File : BN005399.D
 Acq On : 01 May 2019 07:46
 Operator : JU/SJ
 Sample : K2455-02MEDL2 30X
 Misc :
 ALS Vial : 32 Sample Multiplier: 1

Instrument :
 BNA_N
 ClientSampleId :
 GAHQ4MEDL2

Integration Parameters: LSCINT.P

Integrator: RTE
 Smoothing : OFF
 Sampling : 1
 Start Thrs: 0.2
 Stop Thrs : 0

Filtering: 5
 Min Area: 0.1 % of largest Peak
 Max Peaks: 100
 Peak Location: TOP

If leading or trailing edge < 100 prefer < Baseline drop else tangent >
 Peak separation: 5

Method : Z:\SVOASRV\HPCHEM1\BNA_N\METHODS\SOM-EPA-BN041919MA.M
 Title : SVOA CALIBRATION

35	14.063	1876	1883	1893	rBV2	79835	207487	1.79%	0.225%
36	14.146	1893	1897	1901	rVV	63798	87343	0.75%	0.095%
37	14.228	1901	1911	1917	rVV3	3155057	5356462	46.12%	5.805%
38	14.287	1917	1921	1924	rVV2	180285	266815	2.30%	0.289%
39	14.316	1924	1926	1931	rVB	161689	198924	1.71%	0.216%
40	14.446	1941	1948	1957	rBV	157346	374760	3.23%	0.406%
41	14.528	1957	1962	1969	rVB2	82102	124160	1.07%	0.135%
42	14.628	1969	1979	1987	rBV3	277769	553652	4.77%	0.600%
43	14.710	1987	1993	2001	rVB	235485	333856	2.87%	0.362%
44	14.840	2008	2015	2022	rBV3	211436	495003	4.26%	0.536%
45	14.904	2022	2026	2030	rVB	166386	213334	1.84%	0.231%
46	15.004	2038	2043	2044	rBV2	82986	116487	1.00%	0.126%
47	15.104	2055	2060	2064	rVB2	161670	241160	2.08%	0.261%
48	15.169	2064	2071	2074	rBV2	70779	124915	1.08%	0.135%
49	15.222	2075	2080	2085	rVB3	333420	503642	4.34%	0.546%
50	15.281	2085	2090	2095	rBV	754822	1127603	9.71%	1.222%
51	15.404	2108	2111	2115	rVV4	101871	148676	1.28%	0.161%
52	15.504	2123	2128	2135	rVB7	48678	107645	0.93%	0.117%
53	15.575	2135	2140	2148	rBV	111997	202941	1.75%	0.220%
54	15.728	2158	2166	2174	rVB4	65401	187889	1.62%	0.204%
55	15.969	2201	2207	2216	rBV5	70046	136753	1.18%	0.148%
56	16.287	2251	2261	2266	rVV2	190810	452695	3.90%	0.491%
57	16.334	2266	2269	2275	rVV	196474	284695	2.45%	0.309%
58	16.434	2281	2286	2292	rVB3	94502	157316	1.35%	0.171%
59	16.528	2292	2302	2304	rBV8	34631	93296	0.80%	0.101%
60	16.634	2317	2320	2328	rVB2	80454	133757	1.15%	0.145%
61	16.798	2344	2348	2358	rVB	157501	246117	2.12%	0.267%
62	16.981	2372	2379	2383	rBV	4259965	6059097	52.16%	6.567%
63	17.022	2383	2386	2392	rVV	3001611	4023262	34.64%	4.360%
64	17.081	2392	2396	2398	rVV	229836	347957	3.00%	0.377%
65	17.110	2398	2401	2408	rVV	219473	356020	3.07%	0.386%
66	17.175	2408	2412	2418	rVV3	71322	153295	1.32%	0.166%
67	17.504	2464	2468	2472	rVV	84383	114027	0.98%	0.124%
68	17.563	2473	2478	2485	rVB4	103004	186062	1.60%	0.202%
69	17.857	2523	2528	2532	rVV	647699	906182	7.80%	0.982%
70	17.904	2532	2536	2546	rVV	684753	1019085	8.77%	1.105%
71	17.987	2546	2550	2554	rVV	59378	84484	0.73%	0.092%

Data Path : Z:\SVOASRV\HPCHEM1\BNA_N\DATA\BN043019\
 Data File : BN005399.D
 Acq On : 01 May 2019 07:46
 Operator : JU/SJ
 Sample : K2455-02MEDL2 30X
 Misc :
 ALS Vial : 32 Sample Multiplier: 1

Instrument :
 BNA_N
 ClientSampleId :
 GAHQ4MEDL2

Integration Parameters: LSCINT.P

Integrator: RTE
 Smoothing : OFF
 Sampling : 1
 Start Thrs: 0.2
 Stop Thrs : 0

Filtering: 5
 Min Area: 0.1 % of largest Peak
 Max Peaks: 100
 Peak Location: TOP

If leading or trailing edge < 100 prefer < Baseline drop else tangent >
 Peak separation: 5

Method : Z:\SVOASRV\HPCHEM1\BNA_N\METHODS\SOM-EPA-BN041919MA.M
 Title : SVOA CALIBRATION

72	18.051	2554	2561	2565	rVV2	522626	919791	7.92%	0.997%
73	18.092	2565	2568	2577	rVB	324191	455880	3.92%	0.494%
74	18.369	2610	2615	2618	rVV	269570	369463	3.18%	0.400%
75	18.410	2618	2622	2633	rVB2	185365	326041	2.81%	0.353%
76	18.616	2653	2657	2662	rBV3	71937	106320	0.92%	0.115%
77	18.669	2662	2666	2670	rVB	71293	87083	0.75%	0.094%
78	18.792	2681	2687	2691	rBV2	177661	305466	2.63%	0.331%
79	18.851	2691	2697	2700	rBV3	94014	176786	1.52%	0.192%
80	18.881	2700	2702	2706	rVB2	83648	101862	0.88%	0.110%
81	18.928	2706	2710	2713	rBV	67457	104710	0.90%	0.113%
82	19.051	2723	2731	2737	rBV	644982	955904	8.23%	1.036%
83	19.128	2740	2744	2747	rBV3	62735	93912	0.81%	0.102%
84	19.204	2753	2757	2763	rVV	206384	286627	2.47%	0.311%
85	19.263	2763	2767	2771	rVB2	70479	99989	0.86%	0.108%
86	19.392	2784	2789	2790	rVV	282290	334678	2.88%	0.363%
87	19.422	2790	2794	2804	rVB	928573	1358982	11.70%	1.473%
88	19.757	2846	2851	2857	rBV3	105010	205294	1.77%	0.223%
89	19.892	2869	2874	2876	rVV4	87529	142936	1.23%	0.155%
90	19.928	2877	2880	2886	rVB	185939	243575	2.10%	0.264%
91	20.028	2893	2897	2900	rBV2	138519	189042	1.63%	0.205%
92	20.086	2904	2907	2911	rVB	124402	148184	1.28%	0.161%
93	20.228	2927	2931	2935	rBV	94732	123484	1.06%	0.134%
94	20.275	2935	2939	2944	rVB	122236	158700	1.37%	0.172%
95	20.692	3006	3010	3017	rVB3	102992	148305	1.28%	0.161%
96	21.210	3091	3098	3103	rBV	4376362	6207109	53.44%	6.727%
97	21.828	3199	3203	3207	rVB3	148136	230602	1.99%	0.250%
98	22.292	3279	3282	3287	rVB	137415	183305	1.58%	0.199%
99	23.416	3466	3473	3481	rBV2	2251998	4518583	38.90%	4.897%
100	23.974	3564	3568	3575	rVB2	144806	259880	2.24%	0.282%

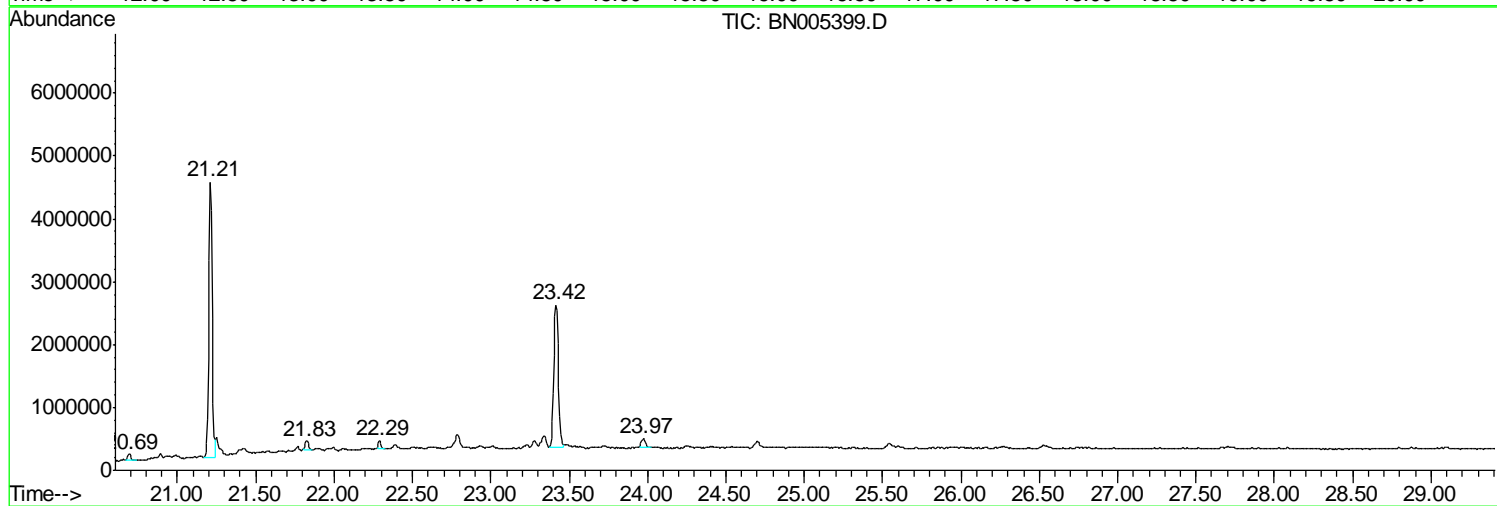
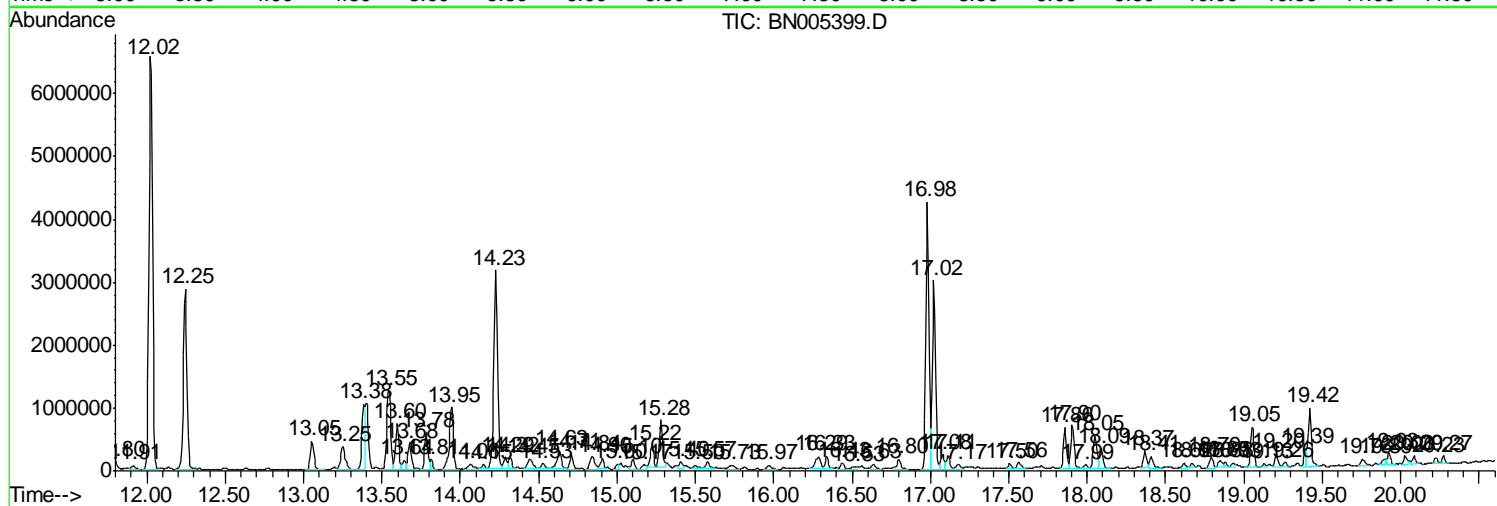
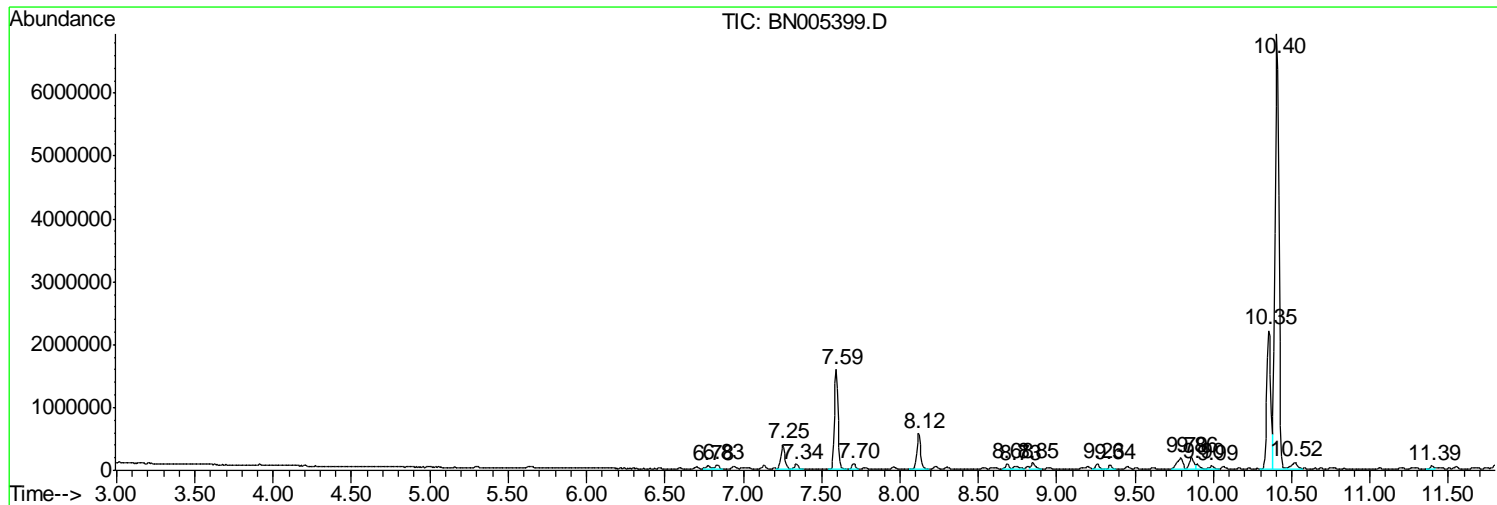
Sum of corrected areas: 92266522

Data Path : Z:\SVOASRV\HPCHEM1\BNA N\DATA\BN043019\
 Data File : BN005399.D
 Acq On : 01 May 2019 07:46
 Operator : JU/SJ
 Sample : K2455-02MEDL2 30X
 Misc :
 ALS Vial : 32 Sample Multiplier: 1

Instrument :
 BNA_N
 ClientSampleId :
 GAHQ4MEDL2

Quant Method : Z:\SVOASRV\HPCHEM1\BNA_N\METHODS\SOM-EPA-BN041919MA.M
 Quant Title : SVOA CALIBRATION

TIC Library : C:\DATABASE\NIST02.L
 TIC Integration Parameters: LSCINT.P



Data Path : Z:\SVOASRV\HPCHEM1\BNA N\DATA\BN043019\
 Data File : BN005399.D
 Acq On : 01 May 2019 07:46
 Operator : JU/SJ
 Sample : K2455-02MEDL2 30X
 Misc :
 ALS Vial : 32 Sample Multiplier: 1

Instrument :
 BNA_N
 ClientSampleID :
 GAHQ4MEDL2

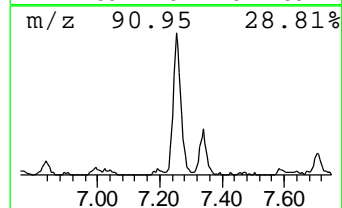
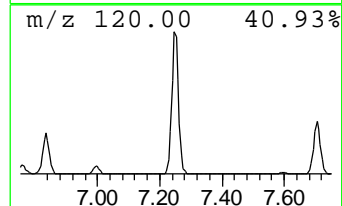
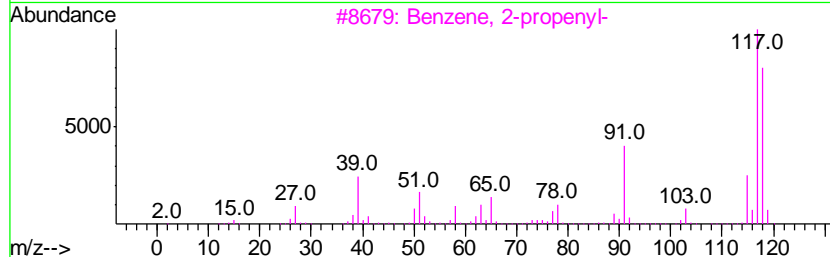
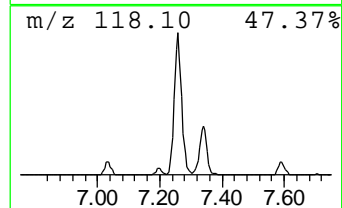
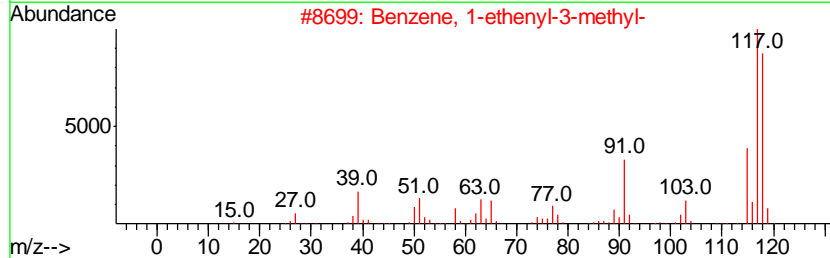
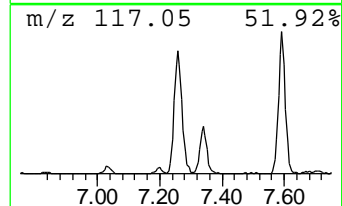
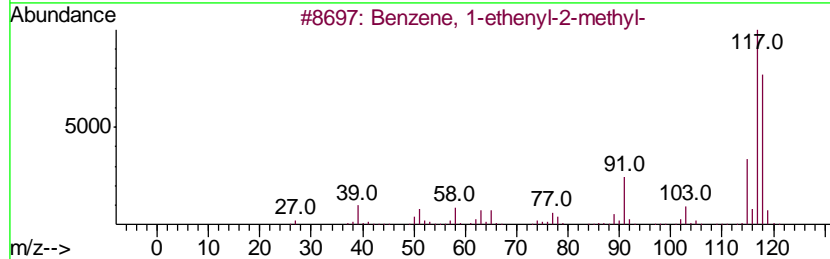
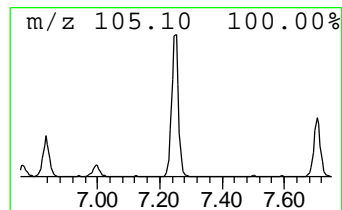
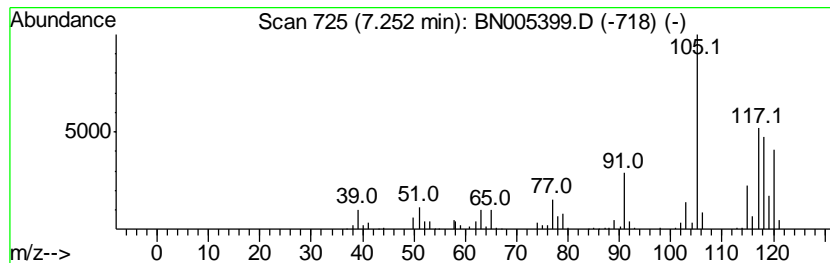
Quant Method : Z:\SVOASRV\HPCHEM1\BNA_N\METHODS\SOM-EPA-BN041919MA.M
 Quant Title : SVOA CALIBRATION

TIC Library : C:\DATABASE\NIST02.L
 TIC Integration Parameters: LSCINT.P

 Peak Number 1 Benzene, 1-ethenyl-2-methyl- Concentration Rank 5

R.T.	EstConc	Area	Relative to ISTD	R.T.
7.25	5.50 ng/ul	675829	1,4-Dichlorobenzene-d4	7.59

Hit#	of	Tentative ID	MW	MolForm	CAS#	Qual
1	5	Benzene, 1-ethenyl-2-methyl-	118	C9H10	000611-15-4	50
2		Benzene, 1-ethenyl-3-methyl-	118	C9H10	000100-80-1	46
3		Benzene, 2-propenyl-	118	C9H10	000300-57-2	46
4		Benzene, 1-ethyl-3-methyl-	120	C9H12	000620-14-4	46
5		Bicyclo[4.2.0]octa-1,3,5-triene,...	118	C9H10	055337-80-9	43



Data Path : Z:\SVOASRV\HPCHEM1\BNA N\DATA\BN043019\
 Data File : BN005399.D
 Acq On : 01 May 2019 07:46
 Operator : JU/SJ
 Sample : K2455-02MEDL2 30X
 Misc :
 ALS Vial : 32 Sample Multiplier: 1

Instrument :
 BNA_N
 ClientSampled :
 GAHQ4MEDL2

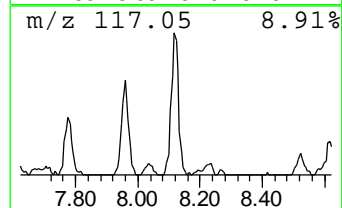
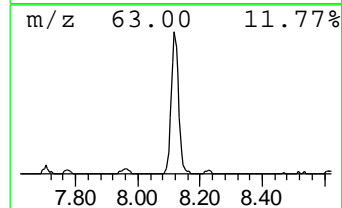
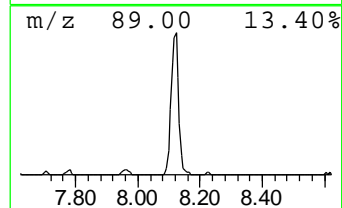
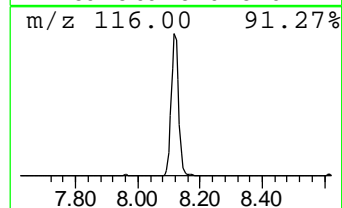
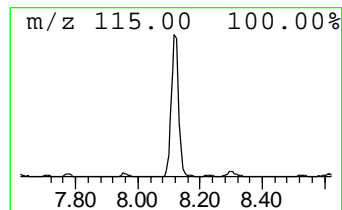
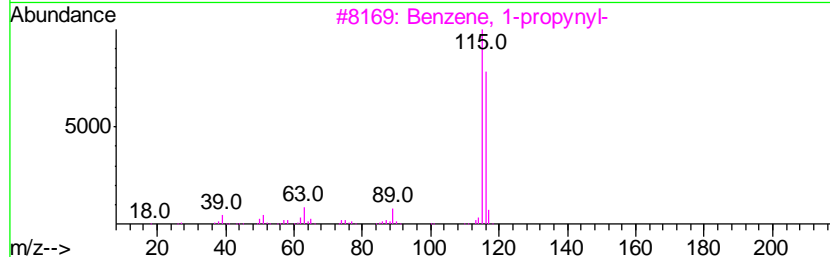
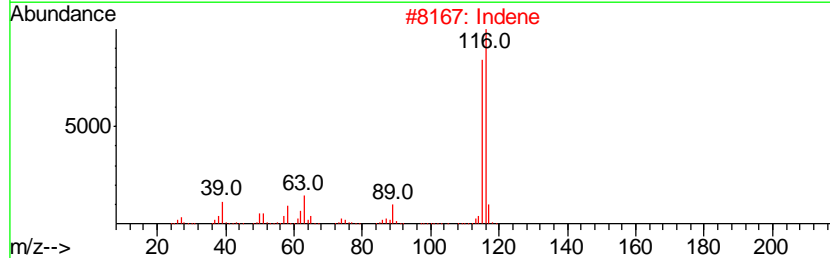
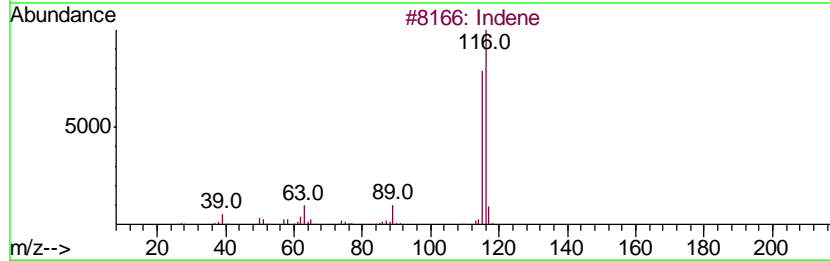
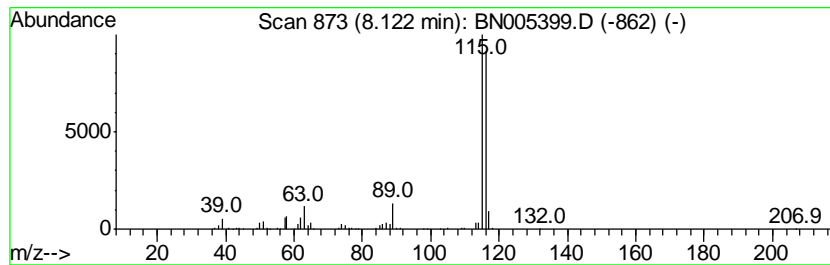
Quant Method : Z:\SVOASRV\HPCHEM1\BNA_N\METHODS\SOM-EPA-BN041919MA.M
 Quant Title : SVOA CALIBRATION

TIC Library : C:\DATABASE\NIST02.L
 TIC Integration Parameters: LSCINT.P

 Peak Number 2 Indene Concentration Rank 3

R.T.	EstConc	Area	Relative to ISTD	R.T.
8.12	7.86 ng/ul	964490	1,4-Dichlorobenzene-d4	7.59

Hit#	of	Tentative ID	MW	MolForm	CAS#	Qual
1	5	Indene	116	C9H8	000095-13-6	97
2		Indene	116	C9H8	000095-13-6	94
3		Benzene, 1-propynyl-	116	C9H8	000673-32-5	91
4		Benzene, 1-ethynyl-4-methyl-	116	C9H8	000766-97-2	91
5		Benzene, 1-propynyl-	116	C9H8	000673-32-5	91



Data Path : Z:\SVOASRV\HPCHEM1\BNA N\DATA\BN043019\
 Data File : BN005399.D
 Acq On : 01 May 2019 07:46
 Operator : JU/SJ
 Sample : K2455-02MEDL2 30X
 Misc :
 ALS Vial : 32 Sample Multiplier: 1

Instrument :
 BNA_N
 ClientSampleID :
 GAHQ4MEDL2

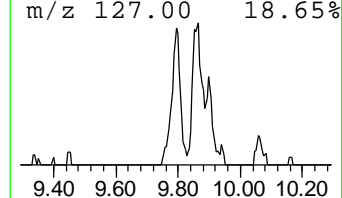
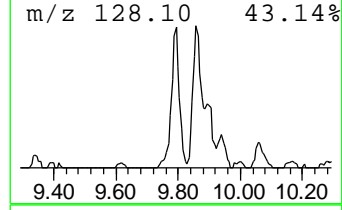
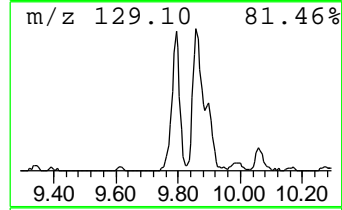
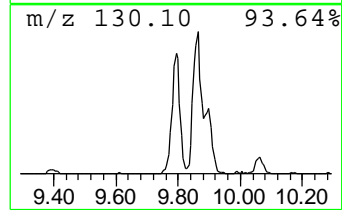
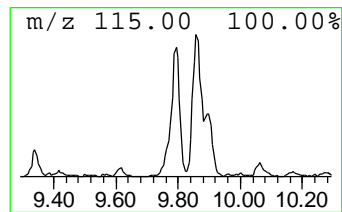
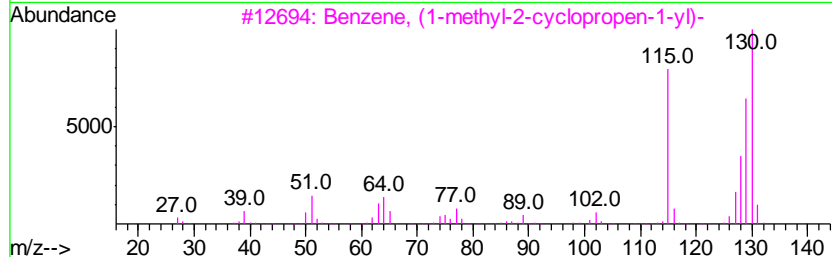
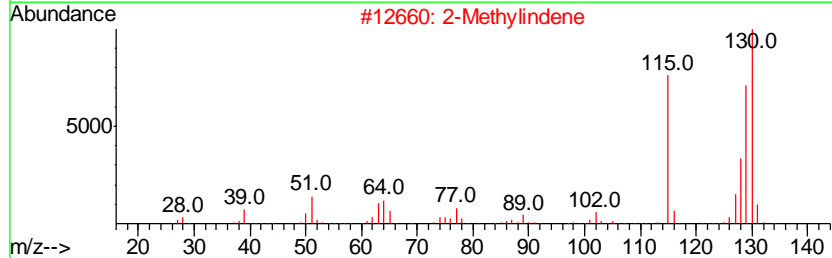
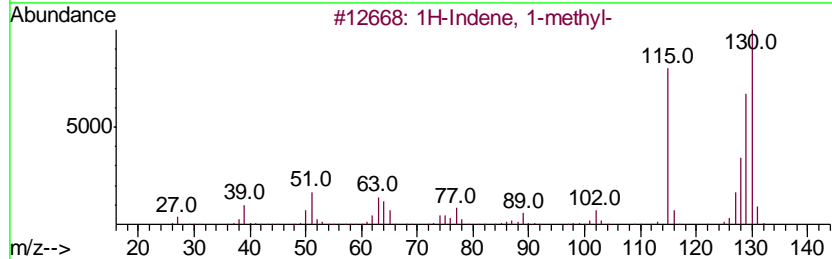
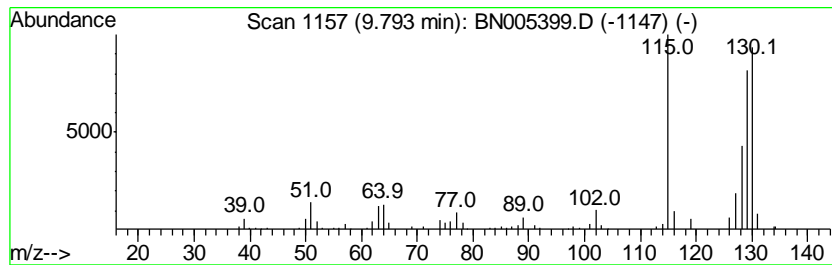
Quant Method : Z:\SVOASRV\HPCHEM1\BNA_N\METHODS\SOM-EPA-BN041919MA.M
 Quant Title : SVOA CALIBRATION

TIC Library : C:\DATABASE\NIST02.L
 TIC Integration Parameters: LSCINT.P

 Peak Number 3 1H-Indene, 1-methyl- Concentration Rank 11

R.T.	EstConc	Area	Relative to ISTD	R.T.
9.79	2.51 ng/ul	480706	Naphthalene-d8	10.35

Hit#	of	Tentative ID	MW	MolForm	CAS#	Qual
1	5	1H-Indene, 1-methyl-	130	C10H10	000767-59-9	96
2		2-Methylindene	130	C10H10	002177-47-1	96
3		Benzene, (1-methyl-2-cyclopropen...	130	C10H10	065051-83-4	95
4		1,4-Dihydronaphthalene	130	C10H10	000612-17-9	95
5		Benzene, 1-butynyl-	130	C10H10	000622-76-4	94



Data Path : Z:\SVOASRV\HPCHEM1\BNA N\DATA\BN043019\
 Data File : BN005399.D
 Acq On : 01 May 2019 07:46
 Operator : JU/SJ
 Sample : K2455-02MEDL2 30X
 Misc :
 ALS Vial : 32 Sample Multiplier: 1

Instrument :
 BNA_N
 ClientSampled :
 GAHQ4MEDL2

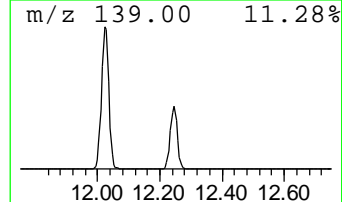
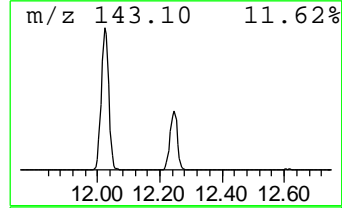
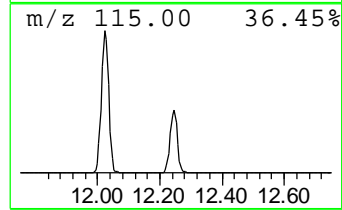
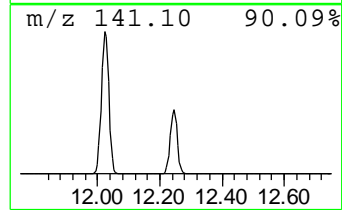
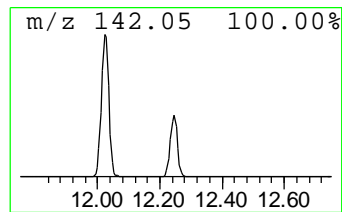
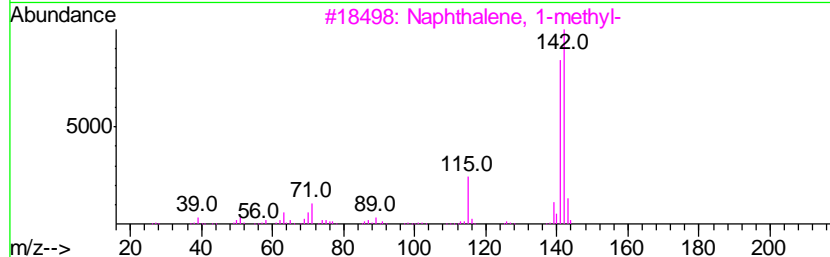
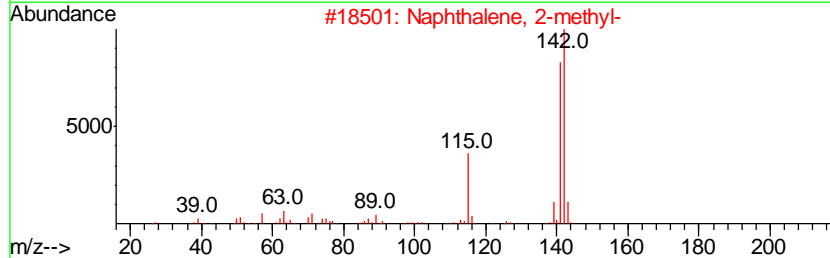
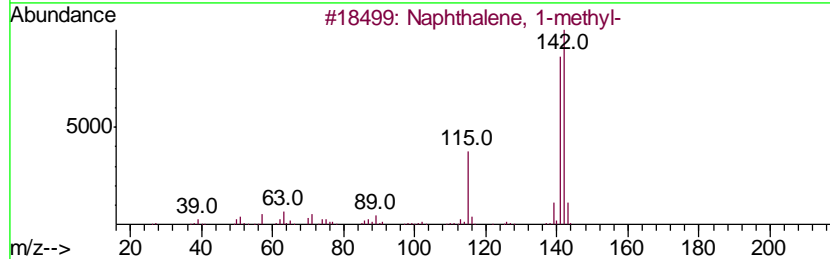
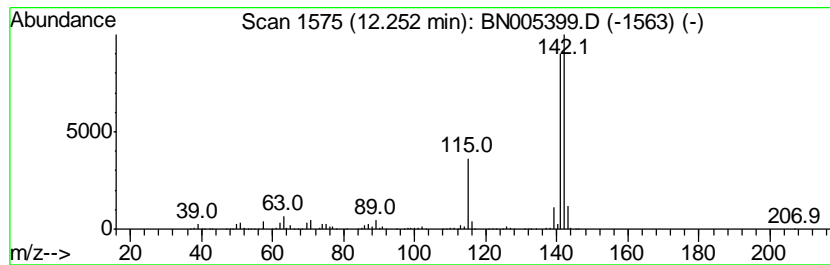
Quant Method : Z:\SVOASRV\HPCHEM1\BNA_N\METHODS\SOM-EPA-BN041919MA.M
 Quant Title : SVOA CALIBRATION

TIC Library : C:\DATABASE\NIST02.L
 TIC Integration Parameters: LSCINT.P

 Peak Number 4 Naphthalene, 1-methyl- Concentration Rank 1

R.T.	EstConc	Area	Relative to ISTD	R.T.
12.25	24.37 ng/ul	4662630	Naphthalene-d8	10.35

Hit#	of	Tentative ID	MW	MolForm	CAS#	Qual
1	5	Naphthalene, 1-methyl-	142	C11H10	000090-12-0	96
2		Naphthalene, 2-methyl-	142	C11H10	000091-57-6	96
3		Naphthalene, 1-methyl-	142	C11H10	000090-12-0	94
4		1,4-Methanonaphthalene, 1,4-dihy...	142	C11H10	004453-90-1	91
5		Naphthalene, 2-methyl-	142	C11H10	000091-57-6	91



Data Path : Z:\SVOASRV\HPCHEM1\BNA N\DATA\BN043019\
 Data File : BN005399.D
 Acq On : 01 May 2019 07:46
 Operator : JU/SJ
 Sample : K2455-02MEDL2 30X
 Misc :
 ALS Vial : 32 Sample Multiplier: 1

Instrument :
 BNA_N
 ClientSampled :
 GAHQ4MEDL2

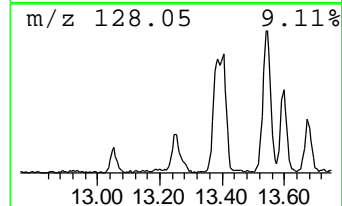
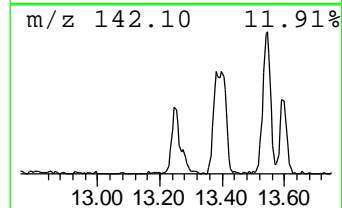
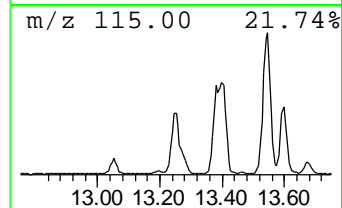
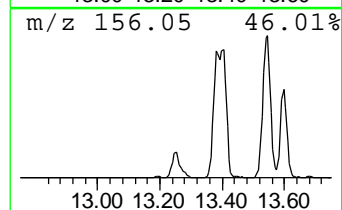
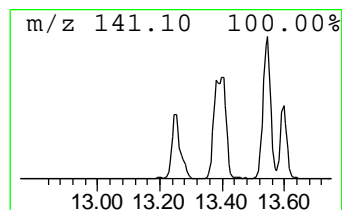
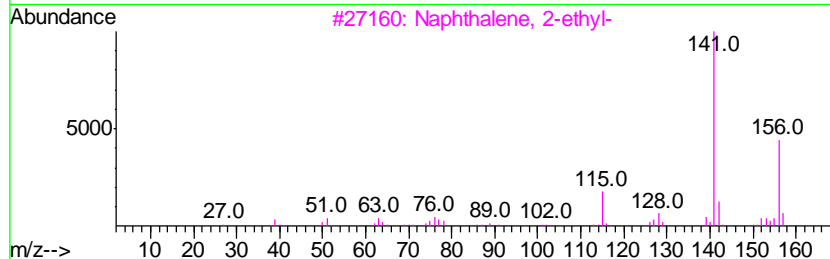
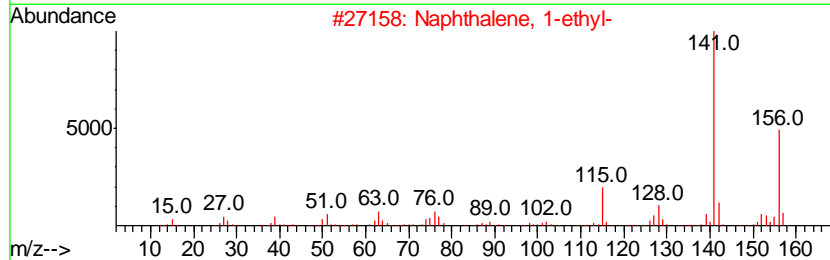
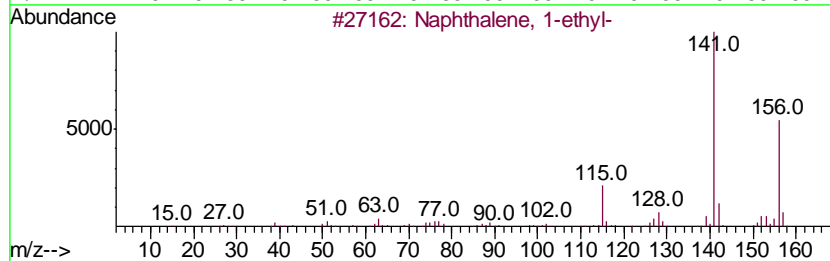
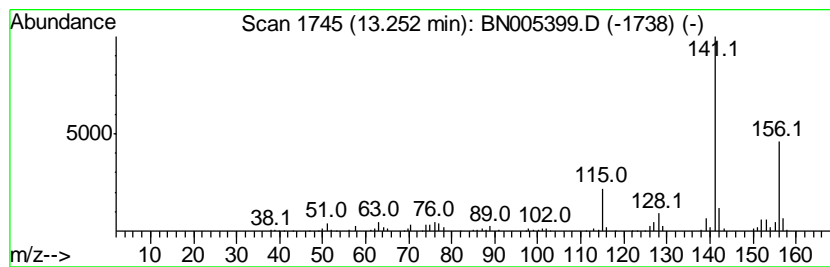
Quant Method : Z:\SVOASRV\HPCHEM1\BNA_N\METHODS\SOM-EPA-BN041919MA.M
 Quant Title : SVOA CALIBRATION

TIC Library : C:\DATABASE\NIST02.L
 TIC Integration Parameters: LSCINT.P

 Peak Number 5 Naphthalene, 1-ethyl- Concentration Rank 10

R.T.	EstConc	Area	Relative to ISTD	R.T.
13.25	2.86 ng/ul	767093	Acenaphthene-d10	14.23

Hit#	of	Tentative ID	MW	MolForm	CAS#	Qual
1	5	Naphthalene, 1-ethyl-	156	C12H12	001127-76-0	96
2		Naphthalene, 1-ethyl-	156	C12H12	001127-76-0	95
3		Naphthalene, 2-ethyl-	156	C12H12	000939-27-5	94
4		Naphthalene, 2-ethyl-	156	C12H12	000939-27-5	94
5		Naphthalene, 2-ethyl-	156	C12H12	000939-27-5	94



Data Path : Z:\SVOASRV\HPCHEM1\BNA N\DATA\BN043019\
 Data File : BN005399.D
 Acq On : 01 May 2019 07:46
 Operator : JU/SJ
 Sample : K2455-02MEDL2 30X
 Misc :
 ALS Vial : 32 Sample Multiplier: 1

Instrument :
 BNA_N
 ClientSampleID :
 GAHQ4MEDL2

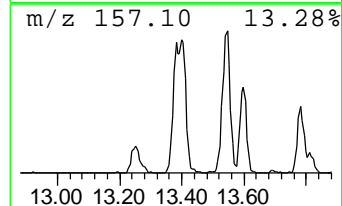
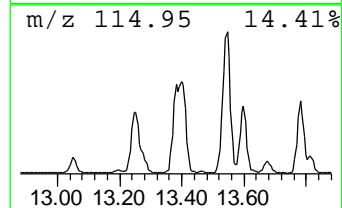
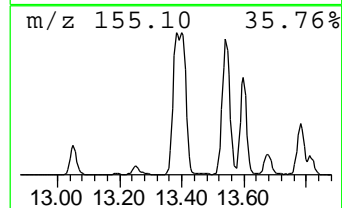
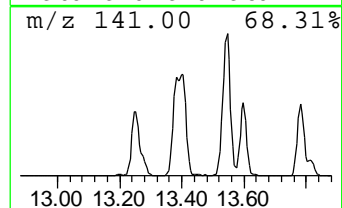
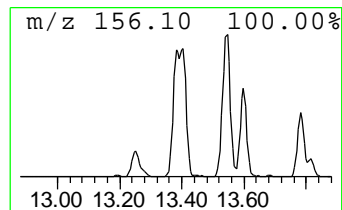
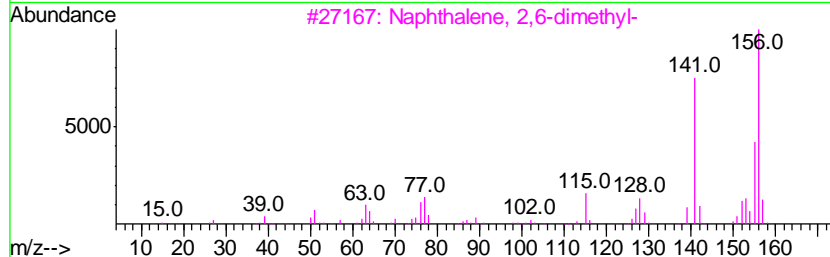
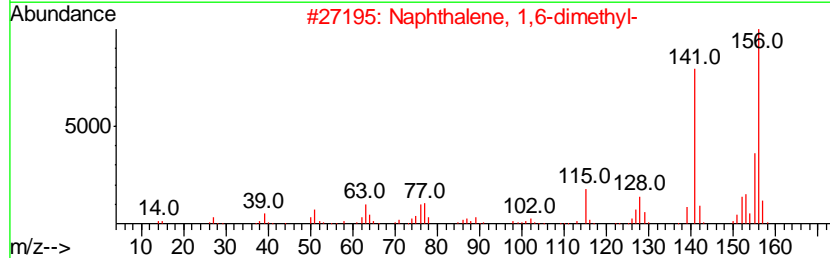
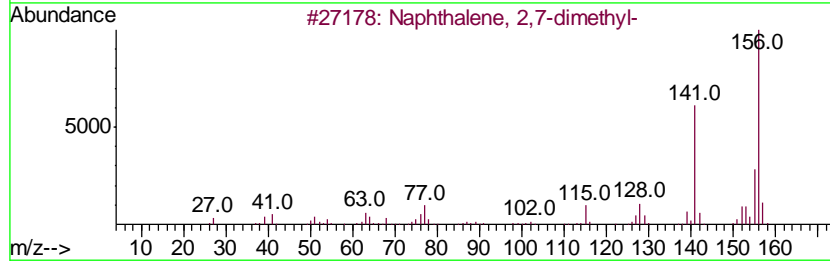
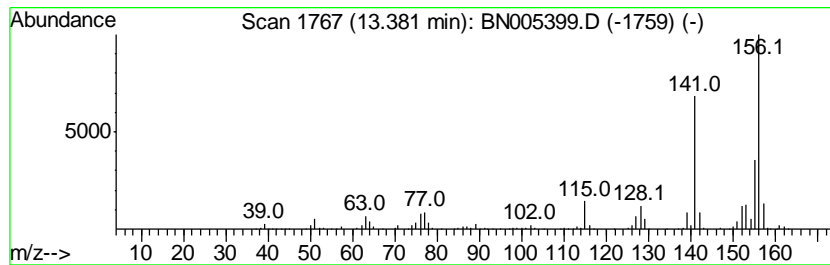
Quant Method : Z:\SVOASRV\HPCHEM1\BNA_N\METHODS\SOM-EPA-BN041919MA.M
 Quant Title : SVOA CALIBRATION

TIC Library : C:\DATABASE\NIST02.L
 TIC Integration Parameters: LSCINT.P

 Peak Number 6 Naphthalene, 2,7-dimethyl- Concentration Rank 4

R.T.	EstConc	Area	Relative to ISTD	R.T.
13.38	6.16 ng/ul	1649770	Acenaphthene-d10	14.23

Hit#	of	Tentative ID	MW	MolForm	CAS#	Qual
1	5	Naphthalene, 2,7-dimethyl-	156	C12H12	000582-16-1	97
2		Naphthalene, 1,6-dimethyl-	156	C12H12	000575-43-9	97
3		Naphthalene, 2,6-dimethyl-	156	C12H12	000581-42-0	97
4		Naphthalene, 2,6-dimethyl-	156	C12H12	000581-42-0	97
5		Naphthalene, 1,7-dimethyl-	156	C12H12	000575-37-1	97



Data Path : Z:\SVOASRV\HPCHEM1\BNA N\DATA\BN043019\
 Data File : BN005399.D
 Acq On : 01 May 2019 07:46
 Operator : JU/SJ
 Sample : K2455-02MEDL2 30X
 Misc :
 ALS Vial : 32 Sample Multiplier: 1

Instrument :
 BNA_N
 ClientSampleID :
 GAHQ4MEDL2

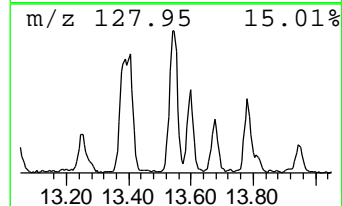
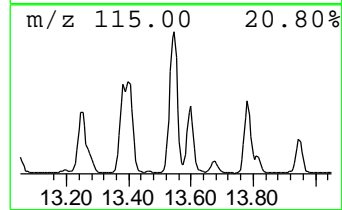
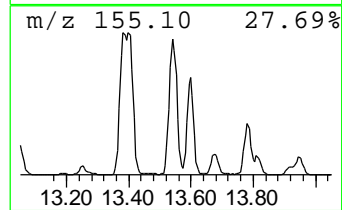
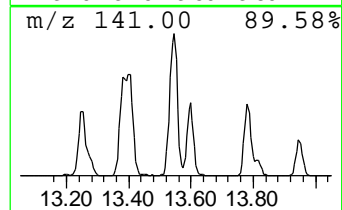
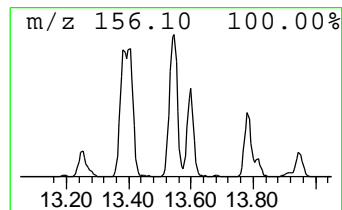
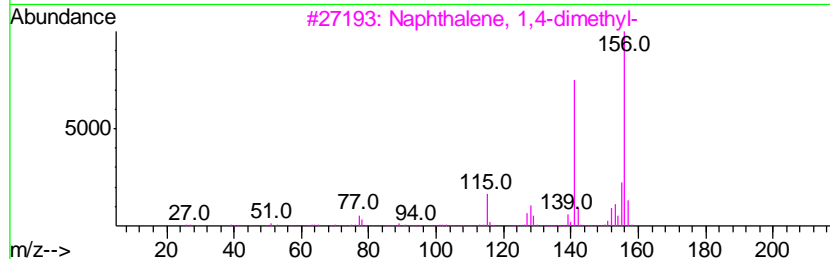
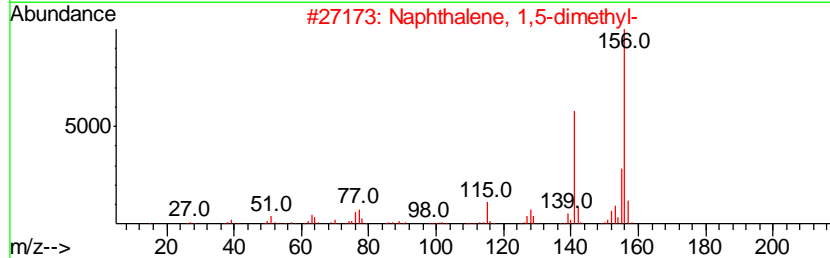
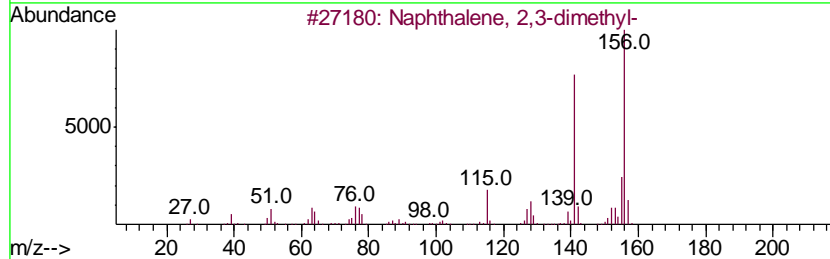
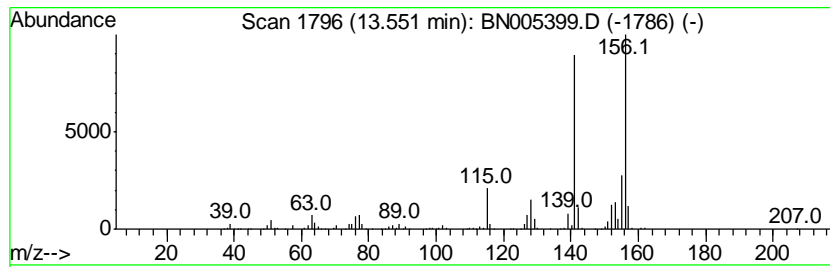
Quant Method : Z:\SVOASRV\HPCHEM1\BNA_N\METHODS\SOM-EPA-BN041919MA.M
 Quant Title : SVOA CALIBRATION

TIC Library : C:\DATABASE\NIST02.L
 TIC Integration Parameters: LSCINT.P

 Peak Number 7 Naphthalene, 2,3-dimethyl- Concentration Rank 2

R.T.	EstConc	Area	Relative to ISTD	R.T.
13.55	8.24 ng/ul	2206080	Acenaphthene-d10	14.23

Hit#	of	Tentative ID	MW	MolForm	CAS#	Qual
1	5	Naphthalene, 2,3-dimethyl-	156	C12H12	000581-40-8	97
2		Naphthalene, 1,5-dimethyl-	156	C12H12	000571-61-9	97
3		Naphthalene, 1,4-dimethyl-	156	C12H12	000571-58-4	97
4		Naphthalene, 1,7-dimethyl-	156	C12H12	000575-37-1	97
5		Naphthalene, 1,6-dimethyl-	156	C12H12	000575-43-9	97



Data Path : Z:\SVOASRV\HPCHEM1\BNA N\DATA\BN043019\
 Data File : BN005399.D
 Acq On : 01 May 2019 07:46
 Operator : JU/SJ
 Sample : K2455-02MEDL2 30X
 Misc :
 ALS Vial : 32 Sample Multiplier: 1

Instrument :
 BNA_N
 ClientSampleID :
 GAHQ4MEDL2

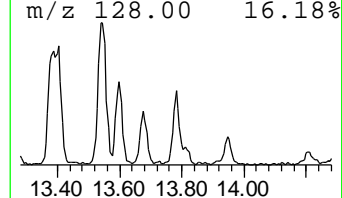
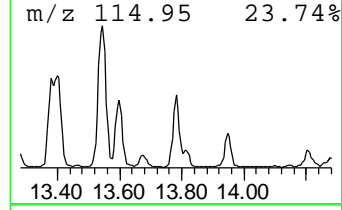
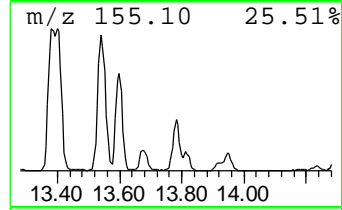
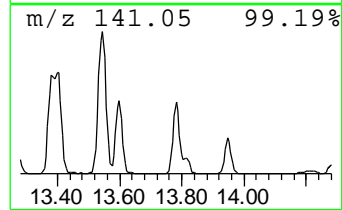
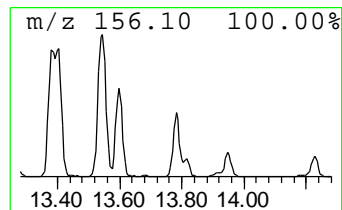
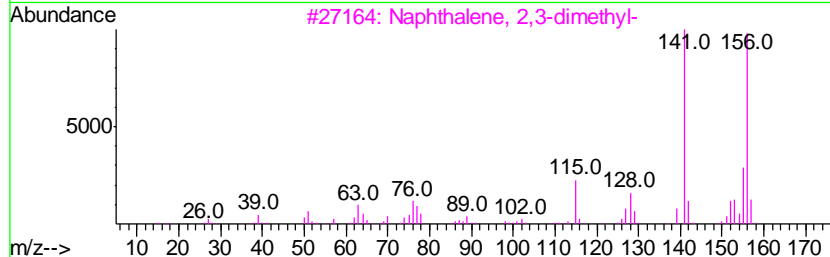
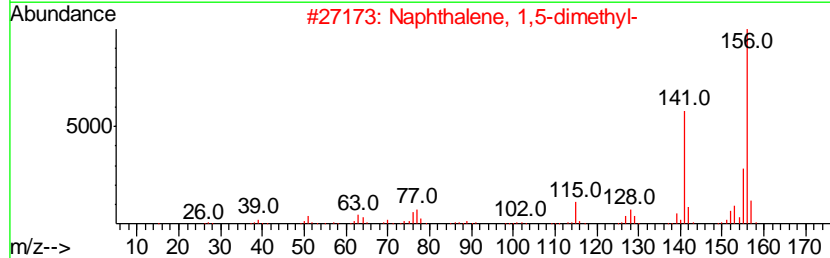
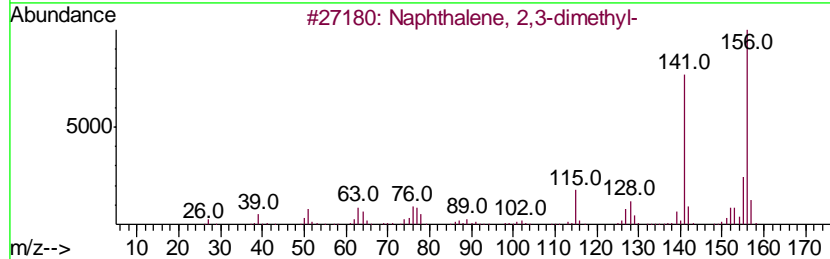
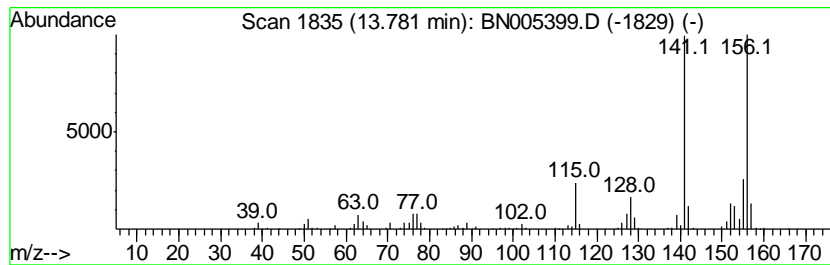
Quant Method : Z:\SVOASRV\HPCHEM1\BNA_N\METHODS\SOM-EPA-BN041919MA.M
 Quant Title : SVOA CALIBRATION

TIC Library : C:\DATABASE\NIST02.L
 TIC Integration Parameters: LSCINT.P

 Peak Number 8 Naphthalene, 1,5-dimethyl- Concentration Rank 7

R.T.	EstConc	Area	Relative to ISTD	R.T.
13.78	3.31 ng/ul	887225	Acenaphthene-d10	14.23

Hit#	of	Tentative ID	MW	MolForm	CAS#	Qual
1	5	Naphthalene, 2,3-dimethyl-	156	C12H12	000581-40-8	97
2		Naphthalene, 1,5-dimethyl-	156	C12H12	000571-61-9	97
3		Naphthalene, 2,3-dimethyl-	156	C12H12	000581-40-8	97
4		Naphthalene, 1,4-dimethyl-	156	C12H12	000571-58-4	97
5		Naphthalene, 2,3-dimethyl-	156	C12H12	000581-40-8	97



Data Path : Z:\SVOASRV\HPCHEM1\BNA N\DATA\BN043019\
 Data File : BN005399.D
 Acq On : 01 May 2019 07:46
 Operator : JU/SJ
 Sample : K2455-02MEDL2 30X
 Misc :
 ALS Vial : 32 Sample Multiplier: 1

Instrument :
 BNA_N
 ClientSampleID :
 GAHQ4MEDL2

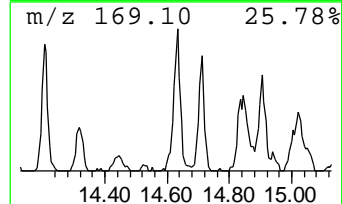
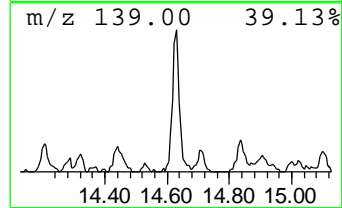
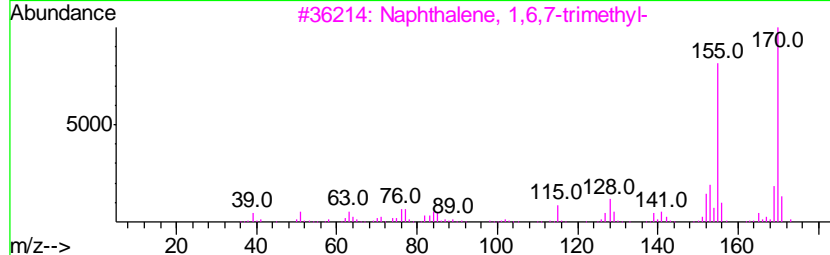
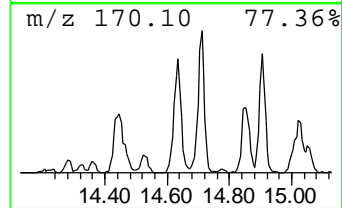
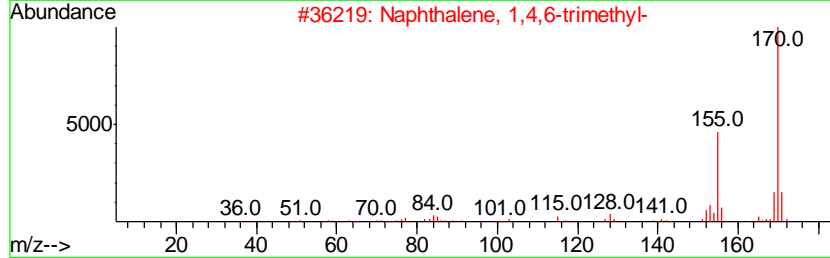
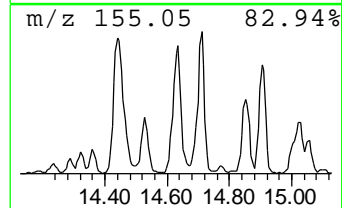
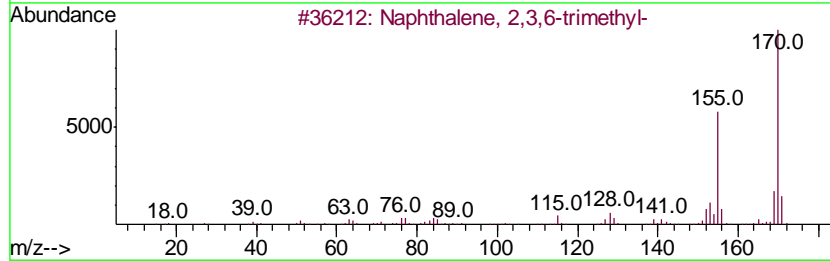
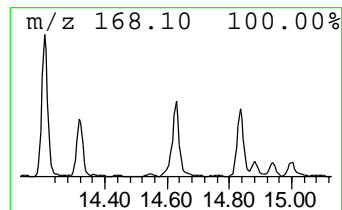
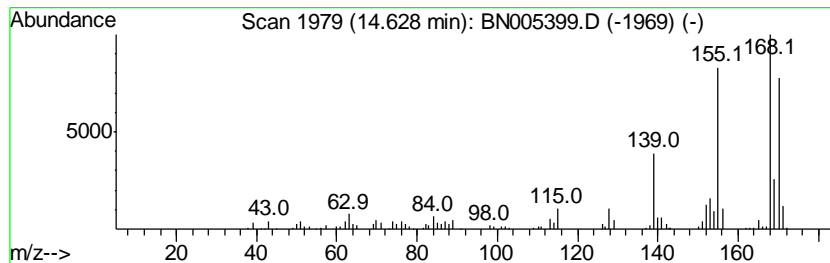
Quant Method : Z:\SVOASRV\HPCHEM1\BNA_N\METHODS\SOM-EPA-BN041919MA.M
 Quant Title : SVOA CALIBRATION

TIC Library : C:\DATABASE\NIST02.L
 TIC Integration Parameters: LSCINT.P

 Peak Number 9 Naphthalene, 2,3,6-trimethyl- Concentration Rank 12

R.T.	EstConc	Area	Relative to ISTD	R.T.
14.63	2.07 ng/ul	553652	Acenaphthene-d10	14.23

Hit#	of	Tentative ID	MW	MolForm	CAS#	Qual
1	5	Naphthalene, 2,3,6-trimethyl-	170	C13H14	000829-26-5	92
2		Naphthalene, 1,4,6-trimethyl-	170	C13H14	002131-42-2	90
3		Naphthalene, 1,6,7-trimethyl-	170	C13H14	002245-38-7	83
4		Naphthalene, 1,4,6-trimethyl-	170	C13H14	002131-42-2	83
5		Naphthalene, 2,3,6-trimethyl-	170	C13H14	000829-26-5	78



Data Path : Z:\SVOASRV\HPCHEM1\BNA N\DATA\BN043019\
 Data File : BN005399.D
 Acq On : 01 May 2019 07:46
 Operator : JU/SJ
 Sample : K2455-02MEDL2 30X
 Misc :
 ALS Vial : 32 Sample Multiplier: 1

Instrument :
 BNA_N
 ClientSampleID :
 GAHQ4MEDL2

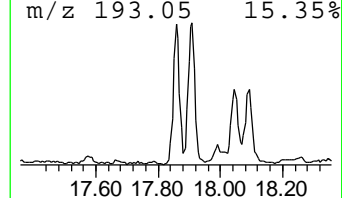
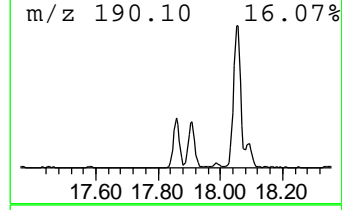
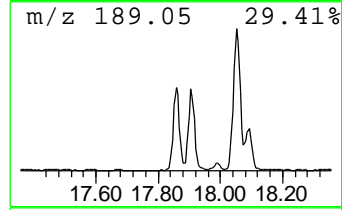
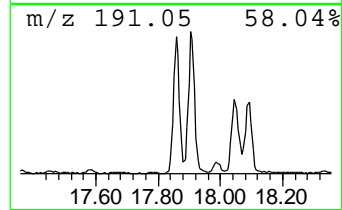
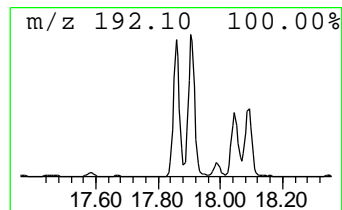
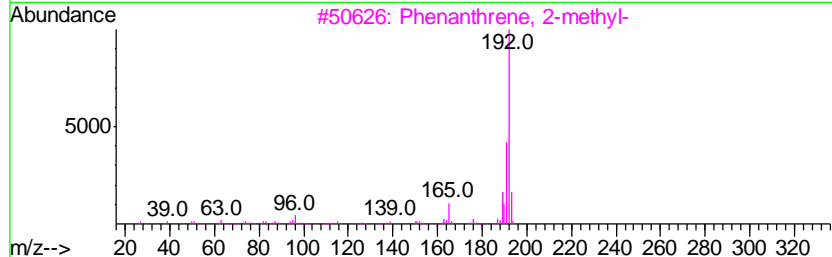
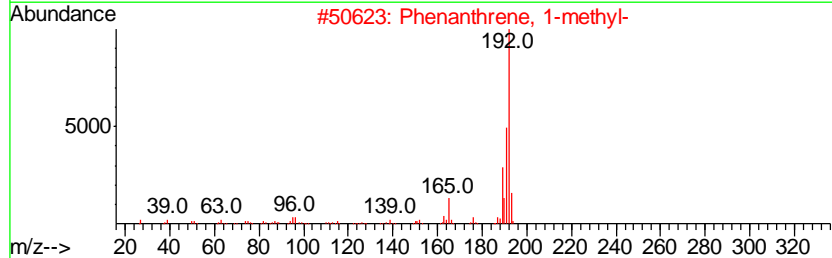
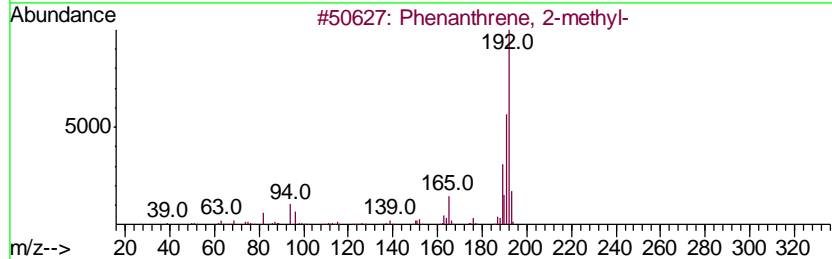
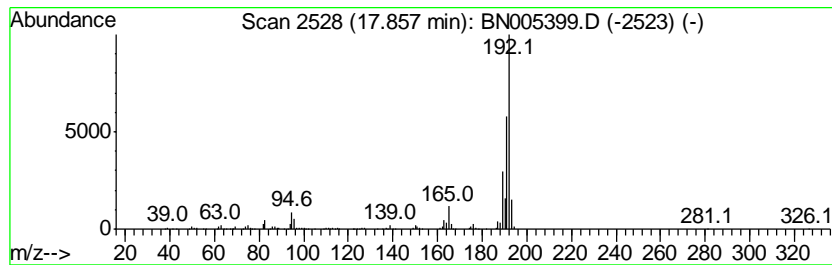
Quant Method : Z:\SVOASRV\HPCHEM1\BNA_N\METHODS\SOM-EPA-BN041919MA.M
 Quant Title : SVOA CALIBRATION

TIC Library : C:\DATABASE\NIST02.L
 TIC Integration Parameters: LSCINT.P

 Peak Number 10 Phenanthrene, 2-methyl- Concentration Rank 9

R.T.	EstConc	Area	Relative to ISTD	R.T.
17.86	2.99 ng/ul	906182	Phenanthrene-d10	16.98

Hit#	of	Tentative ID	MW	MolForm	CAS#	Qual
1	5	Phenanthrene, 2-methyl-	192	C15H12	002531-84-2	97
2		Phenanthrene, 1-methyl-	192	C15H12	000832-69-9	96
3		Phenanthrene, 2-methyl-	192	C15H12	002531-84-2	96
4		1H-Cyclopropa[1]phenanthrene, 1a, ...	192	C15H12	000949-41-7	94
5		Anthracene, 2-methyl-	192	C15H12	000613-12-7	94



Data Path : Z:\SVOASRV\HPCHEM1\BNA N\DATA\BN043019\
 Data File : BN005399.D
 Acq On : 01 May 2019 07:46
 Operator : JU/SJ
 Sample : K2455-02MEDL2 30X
 Misc :
 ALS Vial : 32 Sample Multiplier: 1

Instrument :
 BNA_N
 ClientSampleID :
 GAHQ4MEDL2

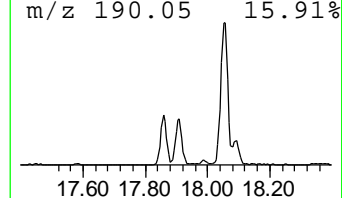
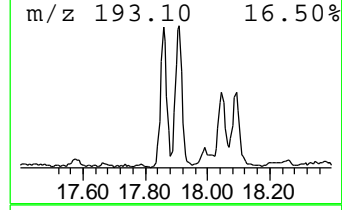
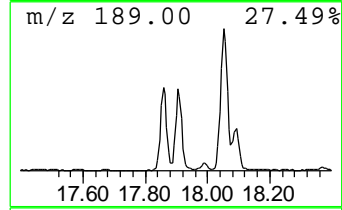
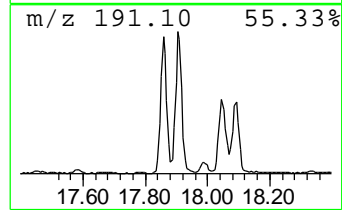
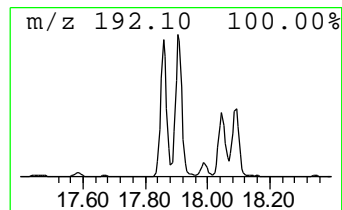
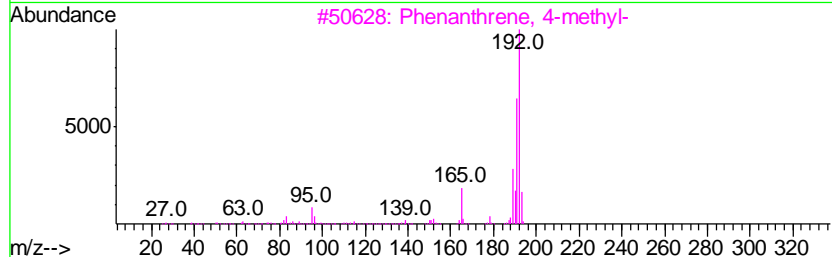
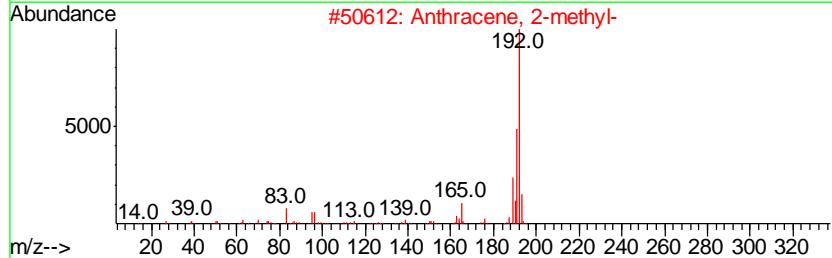
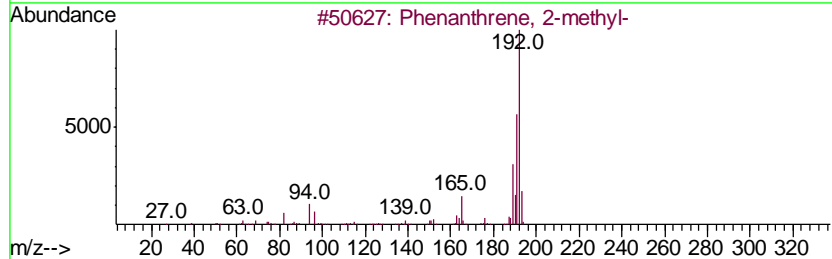
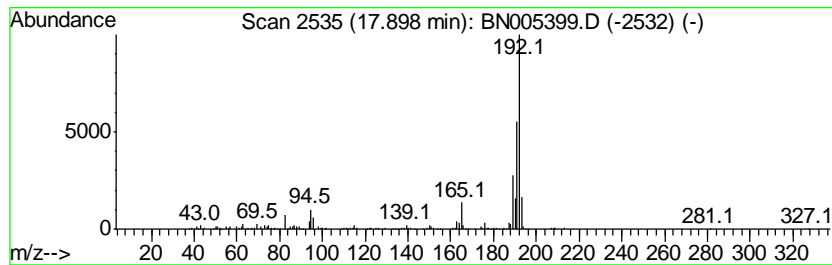
Quant Method : Z:\SVOASRV\HPCHEM1\BNA_N\METHODS\SOM-EPA-BN041919MA.M
 Quant Title : SVOA CALIBRATION

TIC Library : C:\DATABASE\NIST02.L
 TIC Integration Parameters: LSCINT.P

 Peak Number 11 Anthracene, 2-methyl- Concentration Rank 6

R.T.	EstConc	Area	Relative to ISTD	R.T.
17.90	3.36 ng/ul	1019090	Phenanthrene-d10	16.98

Hit#	of	Tentative ID	MW	MolForm	CAS#	Qual
1	5	Phenanthrene, 2-methyl-	192	C15H12	002531-84-2	96
2		Anthracene, 2-methyl-	192	C15H12	000613-12-7	96
3		Phenanthrene, 4-methyl-	192	C15H12	000832-64-4	95
4		Anthracene, 2-methyl-	192	C15H12	000613-12-7	95
5		Phenanthrene, 2-methyl-	192	C15H12	002531-84-2	94



Data Path : Z:\SVOASRV\HPCHEM1\BNA N\DATA\BN043019\
 Data File : BN005399.D
 Acq On : 01 May 2019 07:46
 Operator : JU/SJ
 Sample : K2455-02MEDL2 30X
 Misc :
 ALS Vial : 32 Sample Multiplier: 1

Instrument :
 BNA_N
 ClientSampleID :
 GAHQ4MEDL2

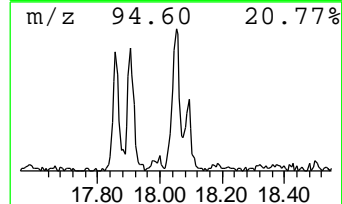
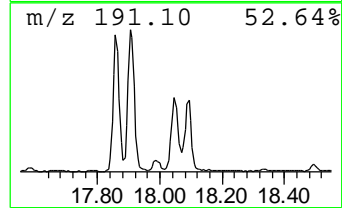
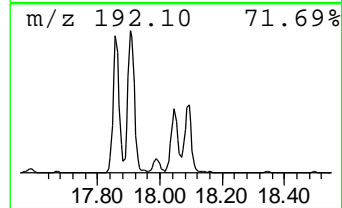
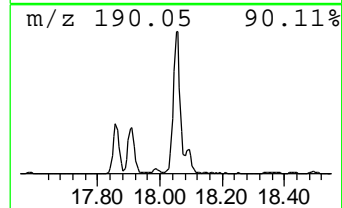
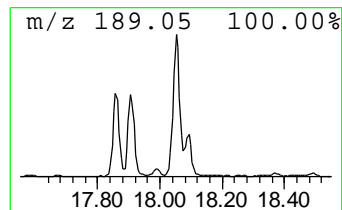
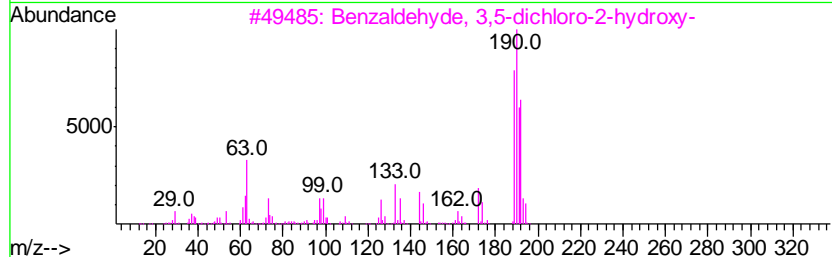
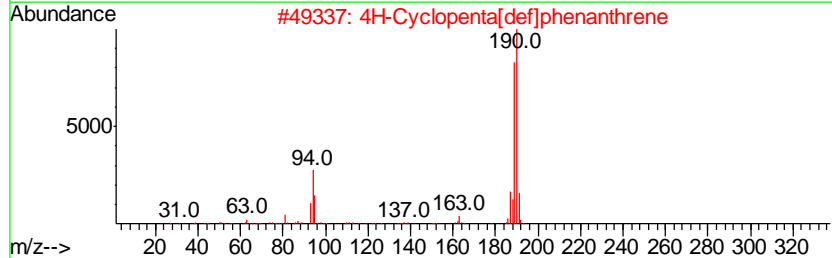
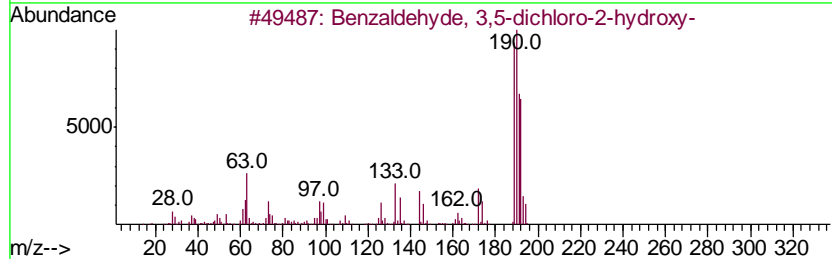
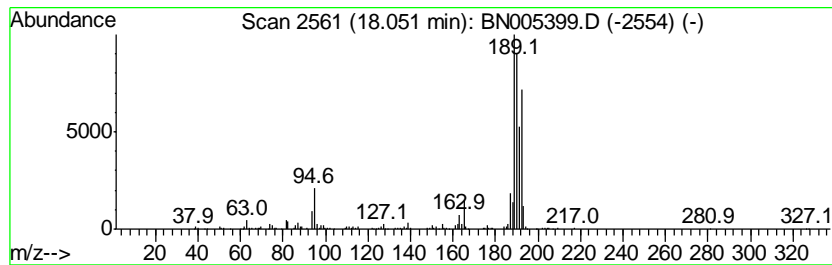
Quant Method : Z:\SVOASRV\HPCHEM1\BNA_N\METHODS\SOM-EPA-BN041919MA.M
 Quant Title : SVOA CALIBRATION

TIC Library : C:\DATABASE\NIST02.L
 TIC Integration Parameters: LSCINT.P

 Peak Number 12 Benzaldehyde, 3,5-dichloro-... Concentration Rank 8

R.T.	EstConc	Area	Relative to ISTD	R.T.
18.05	3.04 ng/ul	919791	Phenanthrene-d10	16.98

Hit#	of	Tentative ID	MW	MolForm	CAS#	Qual
1	5	Benzaldehyde, 3,5-dichloro-2-hyd...	190	C7H4Cl2O2	000090-60-8	72
2		4H-Cyclopenta[def]phenanthrene	190	C15H10	000203-64-5	70
3		Benzaldehyde, 3,5-dichloro-2-hyd...	190	C7H4Cl2O2	000090-60-8	58
4		4H-Cyclopenta[def]phenanthrene	190	C15H10	000203-64-5	53
5		4H-Cyclopenta[def]phenanthrene	190	C15H10	000203-64-5	43



Data Path : Z:\SVOASRV\HPCHEM1\BNA_N\DATA\BN043019\
 Data File : BN005399.D
 Acq On : 01 May 2019 07:46
 Operator : JU/SJ
 Sample : K2455-02MEDL2 30X
 Misc :
 ALS Vial : 32 Sample Multiplier: 1

Instrument :
 BNA_N
 ClientSampleId :
 GAHQ4MEDL2

Quant Method : Z:\SVOASRV\HPCHEM1\BNA_N\METHODS\SOM-EPA-BN041919MA.M
 Quant Title : SVOA CALIBRATION

TIC Library : C:\DATABASE\NIST02.L
 TIC Integration Parameters: LSCINT.P

TIC Top Hit name	RT	EstConc	Units	Response	--Internal Standard--			
					#	RT	Resp	Conc
Benzene, 1-etheny...	7.25	5.5	ng/ul	675829	1	7.59	2455540	20.0
Indene	8.12	7.9	ng/ul	964490	1	7.59	2455540	20.0
1H-Indene, 1-methyl-	9.79	2.5	ng/ul	480706	2	10.35	3825820	20.0
Naphthalene, 1-me...	12.25	24.4	ng/ul	4662630	2	10.35	3825820	20.0
Naphthalene, 1-et...	13.25	2.9	ng/ul	767093	3	14.23	5356460	20.0
Naphthalene, 2,7-...	13.38	6.2	ng/ul	1649770	3	14.23	5356460	20.0
Naphthalene, 2,3-...	13.55	8.2	ng/ul	2206080	3	14.23	5356460	20.0
Naphthalene, 1,5-...	13.78	3.3	ng/ul	887225	3	14.23	5356460	20.0
Naphthalene, 2,3,...	14.63	2.1	ng/ul	553652	3	14.23	5356460	20.0
Phenanthrene, 2-m...	17.86	3.0	ng/ul	906182	4	16.98	6059100	20.0
Anthracene, 2-met...	17.90	3.4	ng/ul	1019090	4	16.98	6059100	20.0
Benzaldehyde, 3,5...	18.05	3.0	ng/ul	919791	4	16.98	6059100	20.0