

Data Path : Z:\SVOASRV\HPCHEM1\BNA_N\DATA\BN050219\
 Data File : BN005423.D
 Acq On : 02 May 2019 19:36
 Operator : JU/SJ
 Sample : K2603-07
 Misc :
 ALS Vial : 9 Sample Multiplier: 1

Instrument :
 BNA_N
 ClientSampleId :
 GAJ59

Integration Parameters: LSCINT.P

Integrator: RTE
 Smoothing : OFF Filtering: 5
 Sampling : 1 Min Area: 0.1 % of largest Peak
 Start Thrs: 0.2 Max Peaks: 100
 Stop Thrs : 0 Peak Location: TOP

If leading or trailing edge < 100 prefer < Baseline drop else tangent >
 Peak separation: 5

Method : Z:\SVOASRV\HPCHEM1\BNA_N\METHODS\SOM-EPA-BN041919MA.M
 Title : SVOA CALIBRATION

Signal : TIC

peak #	R.T. min	first scan	max scan	last scan	PK TY	peak height	corr. area	corr. % max.	% of total
1	3.217	35	39	50	rVB	72519	109737	1.28%	0.115%
2	3.464	78	81	91	rBV	63451	102881	1.20%	0.108%
3	3.911	152	157	164	rVB	138670	201732	2.35%	0.212%
4	6.775	637	644	656	rBV	1327592	2278053	26.51%	2.393%
5	6.940	666	672	685	rVB	1049626	1645503	19.15%	1.729%
6	7.128	697	704	715	rBV	1335331	2174299	25.30%	2.284%
7	7.593	775	783	790	rBV	958482	1534137	17.85%	1.612%
8	7.663	790	795	802	rVB	61562	94394	1.10%	0.099%
9	8.293	894	902	913	rBV	1724117	2785813	32.42%	2.926%
10	8.734	970	977	987	rBV	1382919	2218467	25.82%	2.330%
11	9.175	1047	1052	1057	rVB	56493	81618	0.95%	0.086%
12	9.446	1091	1098	1111	rBV	1167325	1944550	22.63%	2.043%
13	9.981	1181	1189	1208	rBV	1670618	2963214	34.48%	3.113%
14	10.352	1245	1252	1258	rBV	1413819	2324274	27.05%	2.442%
15	10.405	1258	1261	1267	rVB2	31566	47174	0.55%	0.050%
16	10.493	1268	1276	1294	rBV	1616313	2958687	34.43%	3.108%
17	11.404	1424	1431	1451	rBV	655401	1435613	16.71%	1.508%
18	11.804	1492	1499	1506	rVB6	17102	39726	0.46%	0.042%
19	11.957	1519	1525	1530	rVB3	25362	47594	0.55%	0.050%
20	12.028	1530	1537	1544	rVB4	25561	47598	0.55%	0.050%
21	12.246	1567	1574	1583	rVB3	40369	72119	0.84%	0.076%
22	12.569	1624	1629	1633	rBV4	6760	13845	0.16%	0.015%
23	12.769	1659	1663	1667	rBV5	10277	14297	0.17%	0.015%
24	13.063	1706	1713	1720	rBV3	39233	62718	0.73%	0.066%
25	13.128	1720	1724	1731	rVV2	26448	40935	0.48%	0.043%
26	13.387	1761	1768	1769	rBV3	26316	37428	0.44%	0.039%
27	13.404	1769	1771	1776	rVV3	30758	42603	0.50%	0.045%
28	13.457	1776	1780	1786	rVV5	16149	26081	0.30%	0.027%
29	13.546	1790	1795	1799	rVV3	42692	72428	0.84%	0.076%
30	13.598	1799	1804	1806	rVV2	30357	44586	0.52%	0.047%
31	13.646	1806	1812	1816	rVV	3241075	4551542	52.97%	4.781%
32	13.693	1816	1820	1829	rVV	1256042	1766960	20.56%	1.856%
33	13.781	1831	1835	1839	rVV4	24861	40829	0.48%	0.043%
34	13.916	1849	1858	1872	rBV	3596708	5539420	64.46%	5.819%

Data Path : Z:\SVOASRV\HPCHEM1\BNA_N\DATA\BN050219\
 Data File : BN005423.D
 Acq On : 02 May 2019 19:36
 Operator : JU/SJ
 Sample : K2603-07
 Misc :
 ALS Vial : 9 Sample Multiplier: 1

Instrument :
 BNA_N
 ClientSampleId :
 GAJ59

Integration Parameters: LSCINT.P

Integrator: RTE
 Smoothing : OFF
 Sampling : 1
 Start Thrs: 0.2
 Stop Thrs : 0

Filtering: 5
 Min Area: 0.1 % of largest Peak
 Max Peaks: 100
 Peak Location: TOP

If leading or trailing edge < 100 prefer < Baseline drop else tangent >
 Peak separation: 5

Method : Z:\SVOASRV\HPCHEM1\BNA_N\METHODS\SOM-EPA-BN041919MA.M
 Title : SVOA CALIBRATION

35	14.151	1893	1898	1902	rVB2	33502	40957	0.48%	0.043%
36	14.228	1904	1911	1918	rBV2	2030185	3278855	38.16%	3.444%
37	14.287	1918	1921	1927	rVB	22918	36083	0.42%	0.038%
38	14.440	1941	1947	1970	rBV	1020382	2093977	24.37%	2.200%
39	14.634	1976	1980	1983	rVB2	20292	28783	0.33%	0.030%
40	14.663	1983	1985	1989	rVB4	11028	12366	0.14%	0.013%
41	14.716	1990	1994	1996	rVB4	13679	17104	0.20%	0.018%
42	14.775	2000	2004	2010	rVB6	10294	19750	0.23%	0.021%
43	14.840	2011	2015	2023	rBV7	17547	35112	0.41%	0.037%
44	14.904	2023	2026	2032	rVB4	11165	16692	0.19%	0.018%
45	15.045	2048	2050	2055	rVB4	14021	17671	0.21%	0.019%
46	15.104	2055	2060	2065	rVB3	39834	48725	0.57%	0.051%
47	15.163	2065	2070	2073	rBV2	22901	32526	0.38%	0.034%
48	15.228	2073	2081	2087	rBV	4427397	6586432	76.65%	6.919%
49	15.281	2087	2090	2095	rVB	63752	85796	1.00%	0.090%
50	15.357	2097	2103	2116	rBV	1324819	2059676	23.97%	2.164%
51	15.463	2116	2121	2125	rBV	48148	67906	0.79%	0.071%
52	15.581	2137	2141	2146	rBV6	9722	18243	0.21%	0.019%
53	15.728	2164	2166	2172	rVB7	14735	24640	0.29%	0.026%
54	15.916	2193	2198	2201	rBV6	11326	20515	0.24%	0.022%
55	15.969	2203	2207	2210	rVV4	32448	48296	0.56%	0.051%
56	16.004	2210	2213	2220	rVB7	26253	53564	0.62%	0.056%
57	16.134	2232	2235	2241	rBV5	12195	17947	0.21%	0.019%
58	16.322	2265	2267	2275	rVB8	13423	24670	0.29%	0.026%
59	16.663	2321	2325	2329	rVB6	13500	19099	0.22%	0.020%
60	16.763	2339	2342	2346	rBV2	35960	56071	0.65%	0.059%
61	16.798	2346	2348	2354	rVB3	17499	32284	0.38%	0.034%
62	16.981	2373	2379	2384	rBV2	2854279	4108223	47.81%	4.316%
63	17.022	2384	2386	2390	rVV	177448	200110	2.33%	0.210%
64	17.081	2390	2396	2410	rVB	4984174	7227794	84.11%	7.593%
65	17.398	2446	2450	2460	rVB8	23415	56633	0.66%	0.059%
66	17.504	2464	2468	2472	rBV4	25815	32462	0.38%	0.034%
67	17.681	2493	2498	2501	rVB6	12190	18670	0.22%	0.020%
68	17.863	2525	2529	2531	rBV	31363	39971	0.47%	0.042%
69	17.904	2531	2536	2550	rVV2	526598	955472	11.12%	1.004%
70	18.051	2557	2561	2565	rBV3	30995	51230	0.60%	0.054%
71	18.198	2582	2586	2590	rBV3	37400	52799	0.61%	0.055%

Data Path : Z:\SVOASRV\HPCHEM1\BNA_N\DATA\BN050219\
 Data File : BN005423.D
 Acq On : 02 May 2019 19:36
 Operator : JU/SJ
 Sample : K2603-07
 Misc :
 ALS Vial : 9 Sample Multiplier: 1

Instrument :
 BNA_N
 ClientSampleId :
 GAJ59

Integration Parameters: LSCINT.P

Integrator: RTE
 Smoothing : OFF
 Sampling : 1
 Start Thrs: 0.2
 Stop Thrs : 0

Filtering: 5
 Min Area: 0.1 % of largest Peak
 Max Peaks: 100
 Peak Location: TOP

If leading or trailing edge < 100 prefer < Baseline drop else tangent >
 Peak separation: 5

Method : Z:\SVOASRV\HPCHEM1\BNA_N\METHODS\SOM-EPA-BN041919MA.M
 Title : SVOA CALIBRATION

72	18.375	2612	2616	2619	rBV4	19717	25279	0.29%	0.027%
73	18.669	2663	2666	2671	rVB7	17366	27783	0.32%	0.029%
74	18.786	2682	2686	2691	rBV7	25143	39250	0.46%	0.041%
75	18.845	2691	2696	2706	rVV4	67650	144542	1.68%	0.152%
76	19.022	2721	2726	2728	rBV2	60857	88325	1.03%	0.093%
77	19.051	2728	2731	2743	rVB	119047	217805	2.53%	0.229%
78	19.198	2752	2756	2764	rBV2	212069	377148	4.39%	0.396%
79	19.275	2766	2769	2775	rVB	68827	107720	1.25%	0.113%
80	19.392	2783	2789	2799	rBV	6291512	8592986	100.00%	9.027%
81	19.928	2878	2880	2884	rVB5	19157	22734	0.26%	0.024%
82	19.975	2885	2888	2891	rVB2	35716	31018	0.36%	0.033%
83	20.028	2895	2897	2901	rVB2	19488	22331	0.26%	0.023%
84	20.228	2928	2931	2935	rVB5	23060	28404	0.33%	0.030%
85	20.275	2935	2939	2942	rBV6	24686	42471	0.49%	0.045%
86	20.351	2950	2952	2955	rVB4	21254	22216	0.26%	0.023%
87	20.475	2970	2973	2977	rVB3	60955	75805	0.88%	0.080%
88	20.945	3048	3053	3059	rBV	262229	438613	5.10%	0.461%
89	21.210	3092	3098	3108	rBV	3420718	4632746	53.91%	4.867%
90	21.392	3125	3129	3134	rBV	171062	202127	2.35%	0.212%
91	21.627	3165	3169	3172	rBV2	106283	124828	1.45%	0.131%
92	21.822	3198	3202	3206	rBV	234123	286433	3.33%	0.301%
93	22.274	3274	3279	3288	rVB2	561473	970266	11.29%	1.019%
94	22.780	3360	3365	3373	rVB	415519	636245	7.40%	0.668%
95	23.274	3442	3449	3455	rBV	3915716	7049666	82.04%	7.406%
96	23.333	3455	3459	3465	rVB	454324	695601	8.09%	0.731%
97	23.410	3465	3472	3483	rBV	2015365	3851266	44.82%	4.046%
98	23.963	3560	3566	3572	rVB	327778	622370	7.24%	0.654%
99	24.686	3684	3689	3696	rVB2	275271	555411	6.46%	0.583%
100	25.533	3827	3833	3842	rVB4	152437	365376	4.25%	0.384%

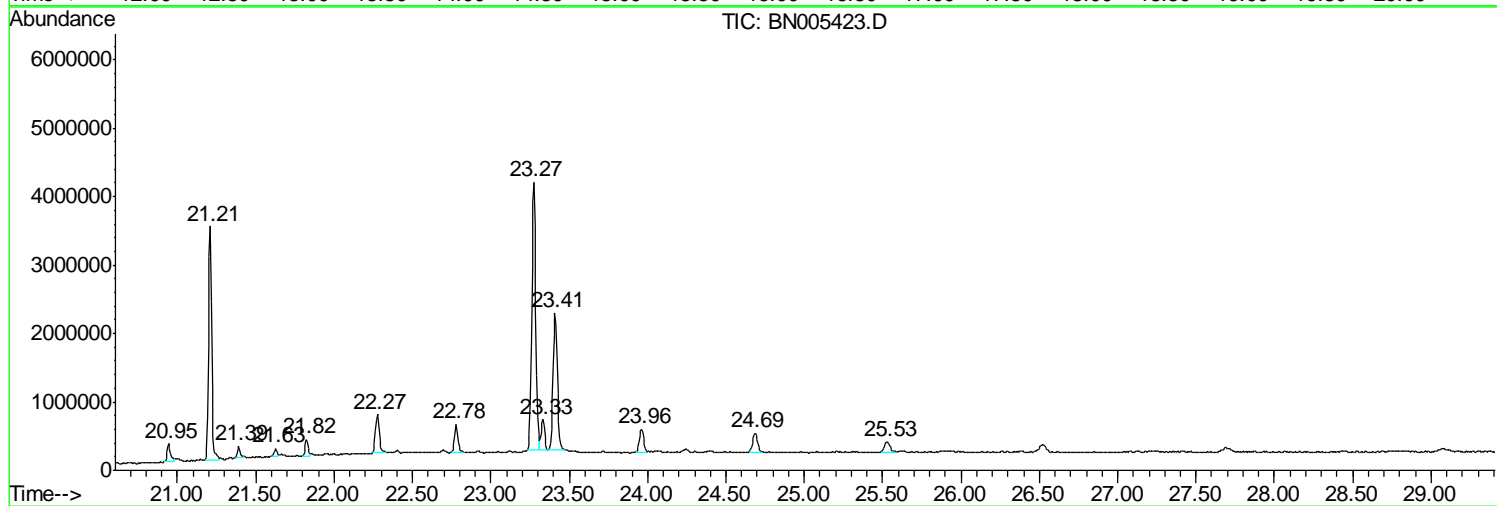
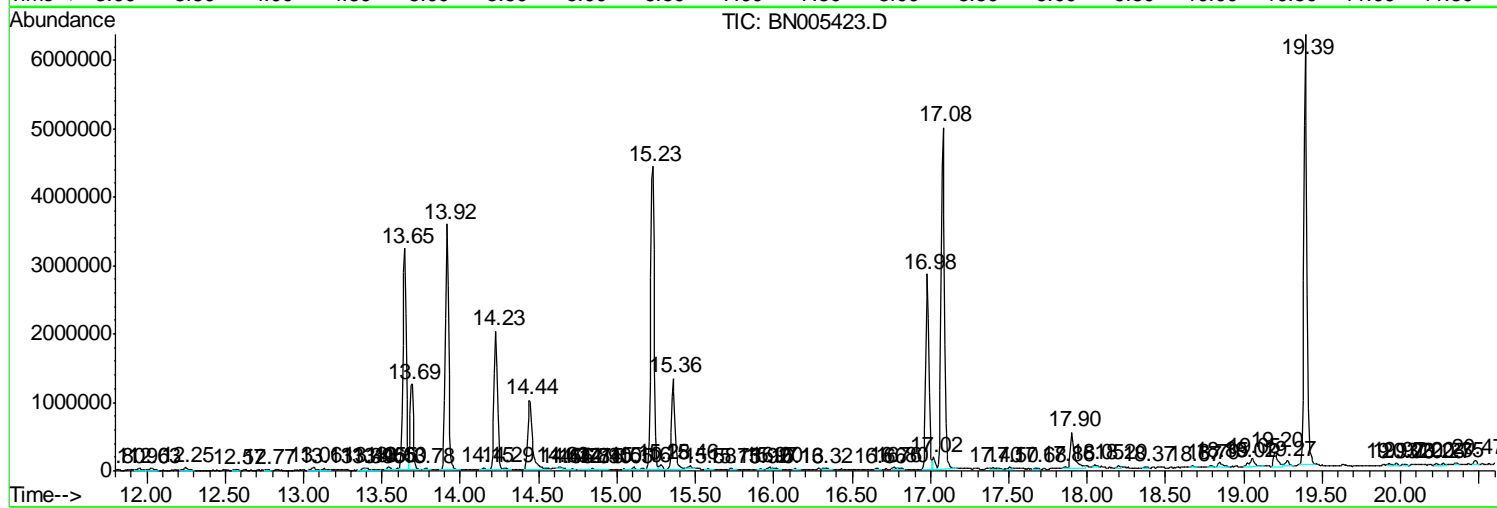
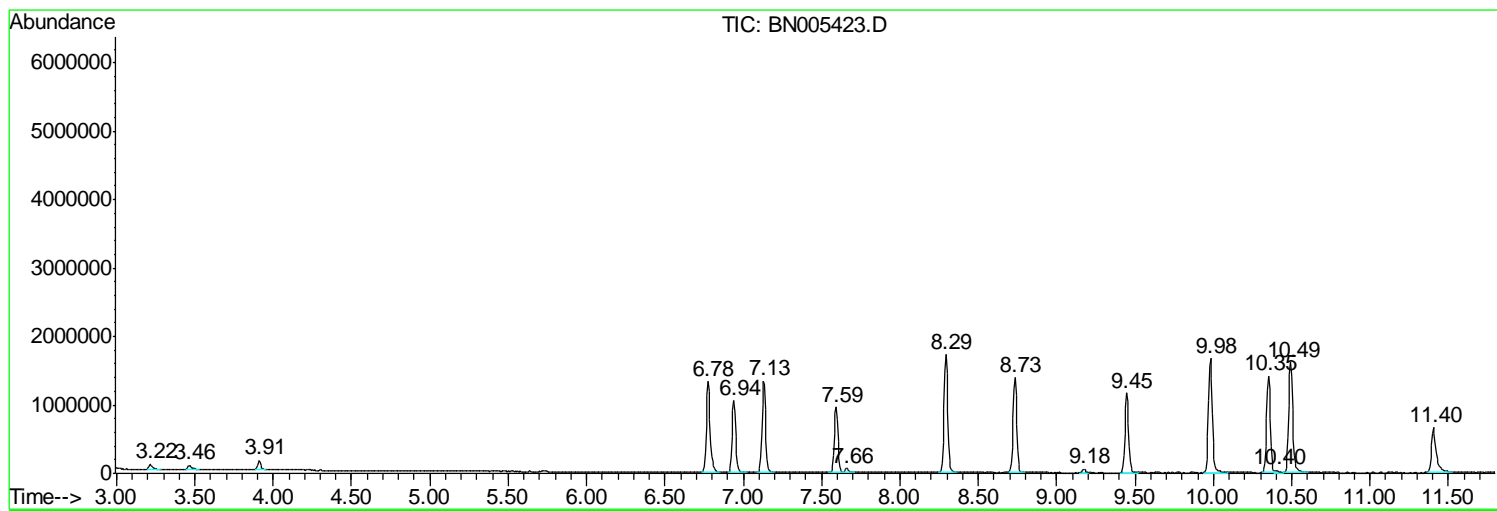
Sum of corrected areas: 95194724

Data Path : Z:\SVOASRV\HPCHEM1\BNA N\DATA\BN050219\
 Data File : BN005423.D
 Acq On : 02 May 2019 19:36
 Operator : JU/SJ
 Sample : K2603-07
 Misc :
 ALS Vial : 9 Sample Multiplier: 1

Instrument :
 BNA_N
 ClientSampleId :
 GAJ59

Quant Method : Z:\SVOASRV\HPCHEM1\BNA_N\METHODS\SOM-EPA-BN041919MA.M
 Quant Title : SVOA CALIBRATION

TIC Library : C:\DATABASE\NIST02.L
 TIC Integration Parameters: LSCINT.P



Data Path : Z:\SVOASRV\HPCHEM1\BNA N\DATA\BN050219\
 Data File : BN005423.D
 Acq On : 02 May 2019 19:36
 Operator : JU/SJ
 Sample : K2603-07
 Misc :
 ALS Vial : 9 Sample Multiplier: 1

Instrument :
 BNA_N
 ClientSampled :
 GAJ59

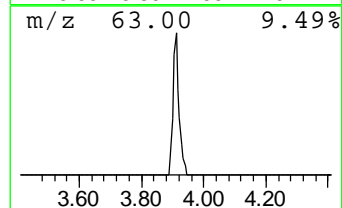
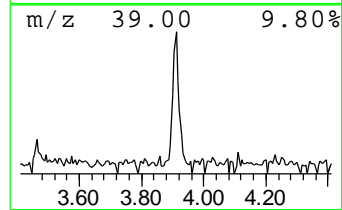
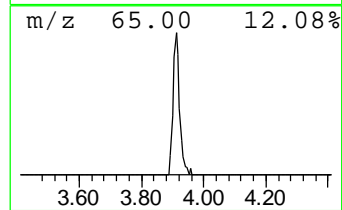
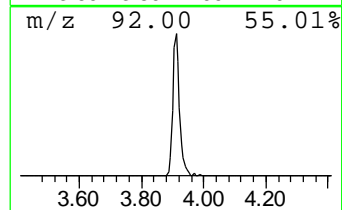
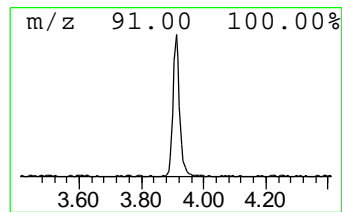
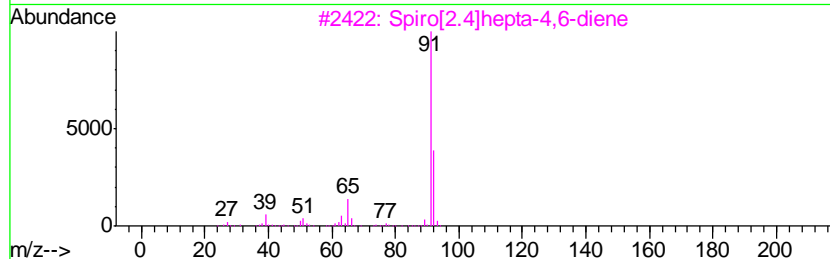
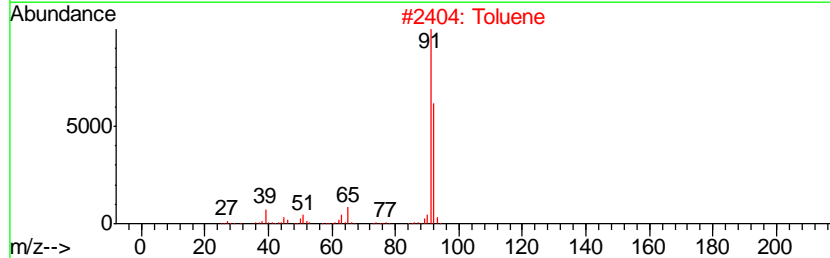
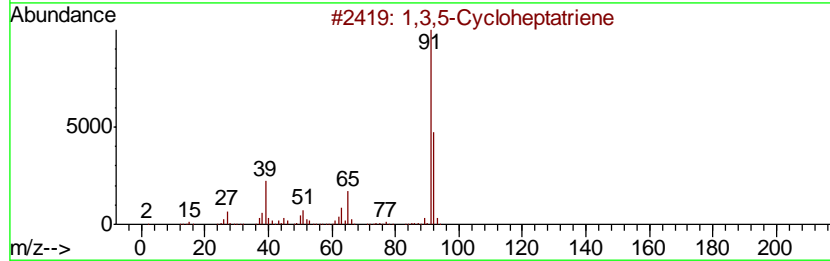
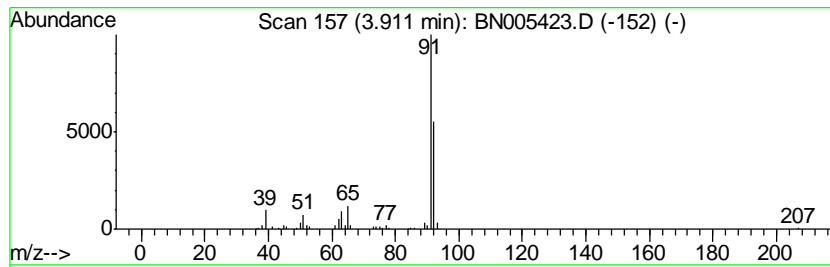
Quant Method : Z:\SVOASRV\HPCHEM1\BNA_N\METHODS\SOM-EPA-BN041919MA.M
 Quant Title : SVOA CALIBRATION

TIC Library : C:\DATABASE\NIST02.L
 TIC Integration Parameters: LSCINT.P

 Peak Number 1 1,3,5-Cycloheptatriene Concentration Rank 8

R.T.	EstConc	Area	Relative to ISTD	R.T.
3.91	2.63 ng/ul	201732	1,4-Dichlorobenzene-d4	7.59

Hit#	of	Tentative ID	MW	MolForm	CAS#	Qual
1	5	1,3,5-Cycloheptatriene	92	C7H8	000544-25-2	90
2		Toluene	92	C7H8	000108-88-3	87
3		Spiro[2.4]hepta-4,6-diene	92	C7H8	000765-46-8	86
4		Toluene	92	C7H8	000108-88-3	83
5		Toluene	92	C7H8	000108-88-3	74



Data Path : Z:\SVOASRV\HPCHEM1\BNA N\DATA\BN050219\
 Data File : BN005423.D
 Acq On : 02 May 2019 19:36
 Operator : JU/SJ
 Sample : K2603-07
 Misc :
 ALS Vial : 9 Sample Multiplier: 1

Instrument :
 BNA_N
 ClientSampled :
 GAJ59

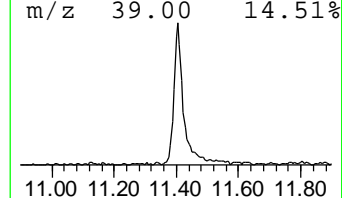
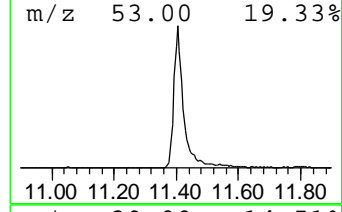
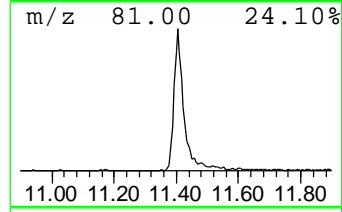
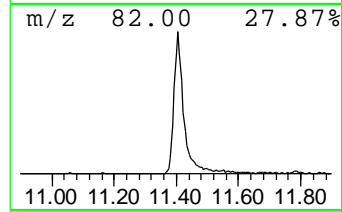
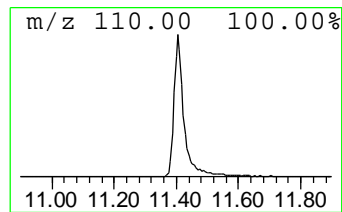
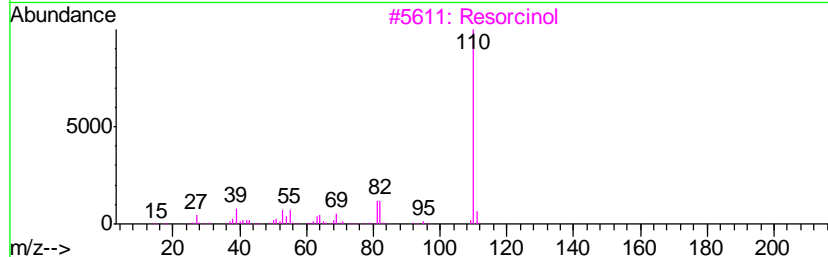
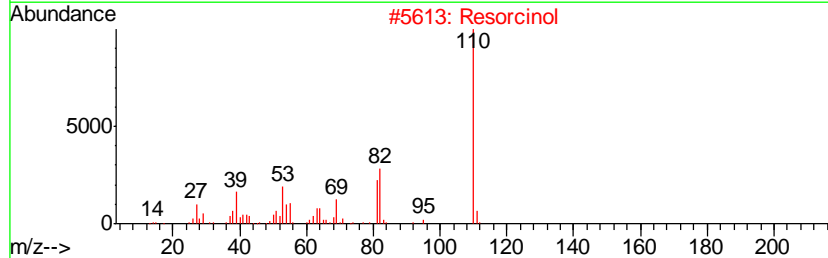
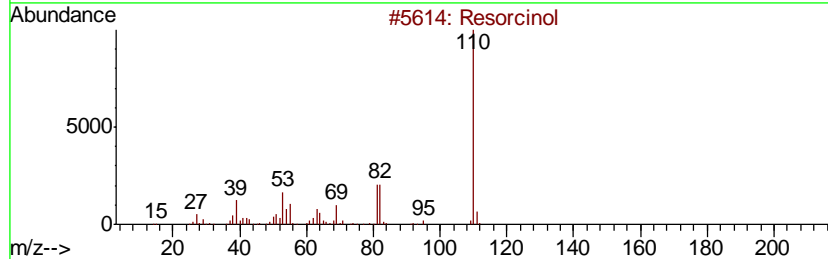
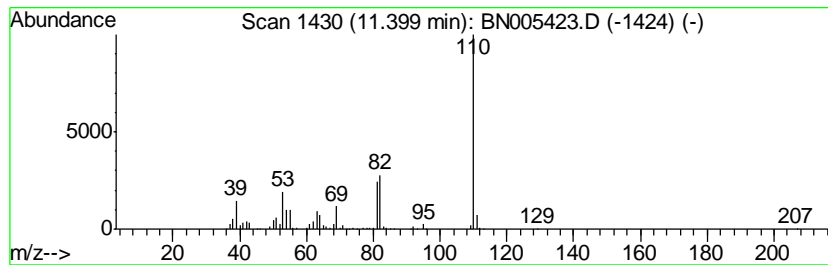
Quant Method : Z:\SVOASRV\HPCHEM1\BNA_N\METHODS\SOM-EPA-BN041919MA.M
 Quant Title : SVOA CALIBRATION

TIC Library : C:\DATABASE\NIST02.L
 TIC Integration Parameters: LSCINT.P

 Peak Number 2 Resorcinol Concentration Rank 1

R.T.	EstConc	Area	Relative to ISTD	R.T.
11.40	12.35 ng/ul	1435610	Naphthalene-d8	10.35

Hit#	of	Tentative ID	MW	MolForm	CAS#	Qual
1	5	Resorcinol	110	C6H6O2	000108-46-3	97
2		Resorcinol	110	C6H6O2	000108-46-3	91
3		Resorcinol	110	C6H6O2	000108-46-3	90
4		Resorcinol	110	C6H6O2	000108-46-3	90
5		Hydroquinone	110	C6H6O2	000123-31-9	83



Data Path : Z:\SVOASRV\HPCHEM1\BNA N\DATA\BN050219\
 Data File : BN005423.D
 Acq On : 02 May 2019 19:36
 Operator : JU/SJ
 Sample : K2603-07
 Misc :
 ALS Vial : 9 Sample Multiplier: 1

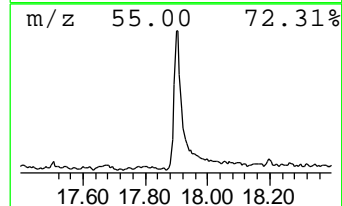
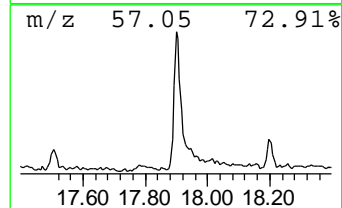
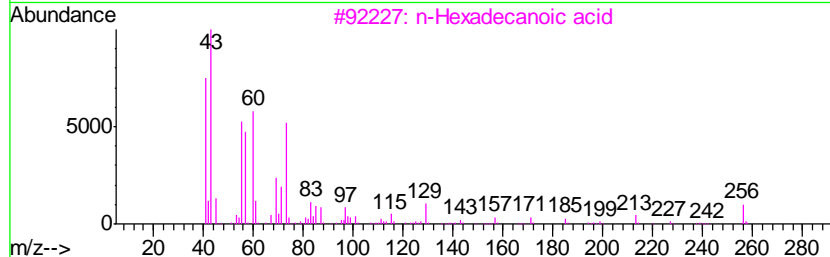
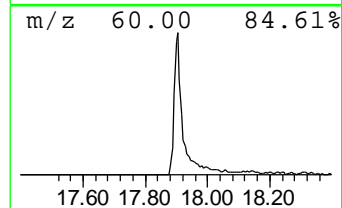
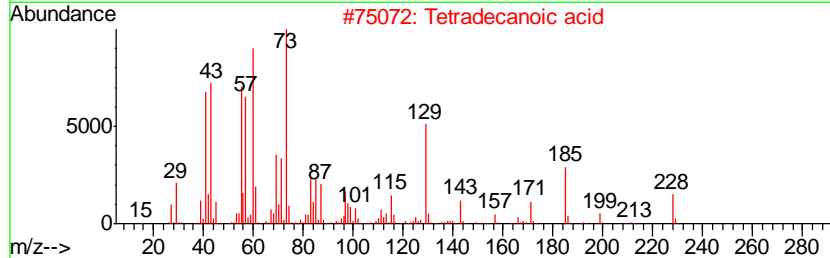
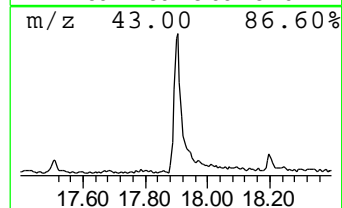
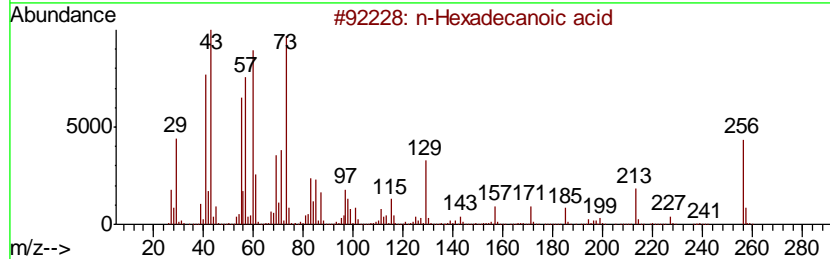
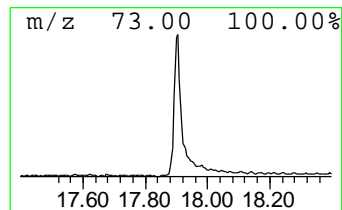
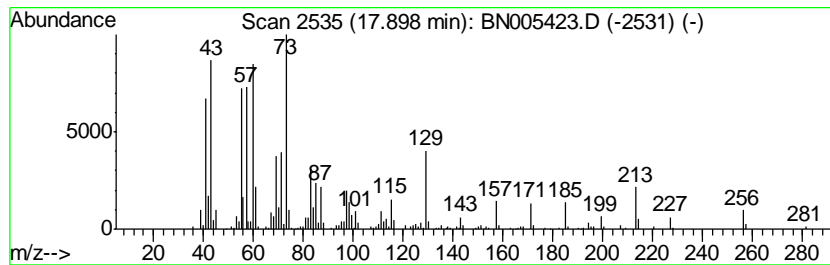
Instrument :
 BNA_N
 ClientSampleID :
 GAJ59

Quant Method : Z:\SVOASRV\HPCHEM1\BNA_N\METHODS\SOM-EPA-BN041919MA.M
 Quant Title : SVOA CALIBRATION

TIC Library : C:\DATABASE\NIST02.L
 TIC Integration Parameters: LSCINT.P

 Peak Number 3 n-Hexadecanoic acid Concentration Rank 2

R.T.	EstConc	Area	Relative to ISTD	R.T.		
17.90	4.65 ng/ul	955472	Phenanthrene-d10	16.98		
Hit# of	5	Tentative ID	MW	MolForm	CAS#	Qual
1		n-Hexadecanoic acid	256	C16H32O2	000057-10-3	98
2		Tetradecanoic acid	228	C14H28O2	000544-63-8	95
3		n-Hexadecanoic acid	256	C16H32O2	000057-10-3	95
4		Tridecanoic acid	214	C13H26O2	000638-53-9	91
5		Tridecanoic acid	214	C13H26O2	000638-53-9	91



Data Path : Z:\SVOASRV\HPCHEM1\BNA N\DATA\BN050219\
 Data File : BN005423.D
 Acq On : 02 May 2019 19:36
 Operator : JU/SJ
 Sample : K2603-07
 Misc :
 ALS Vial : 9 Sample Multiplier: 1

Instrument :
 BNA_N
 ClientSampled :
 GAJ59

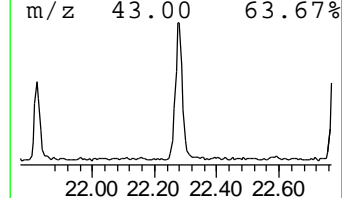
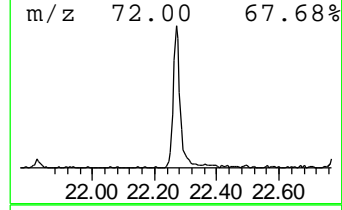
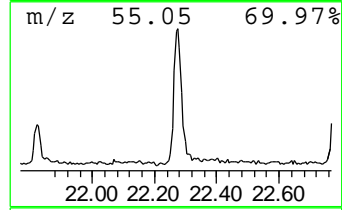
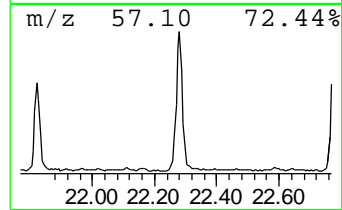
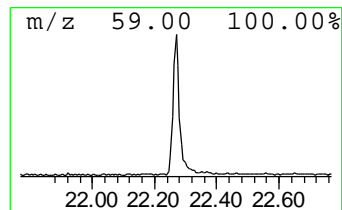
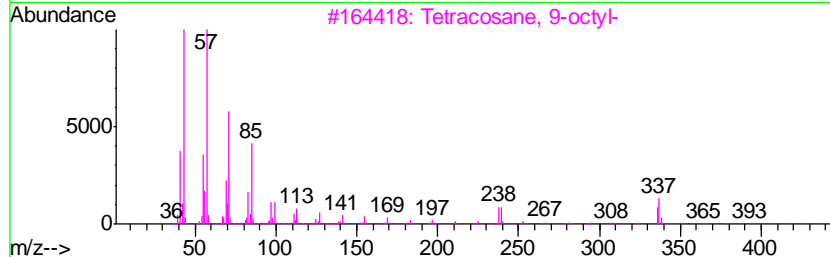
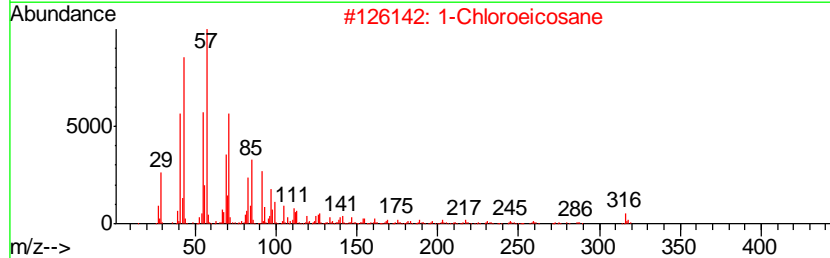
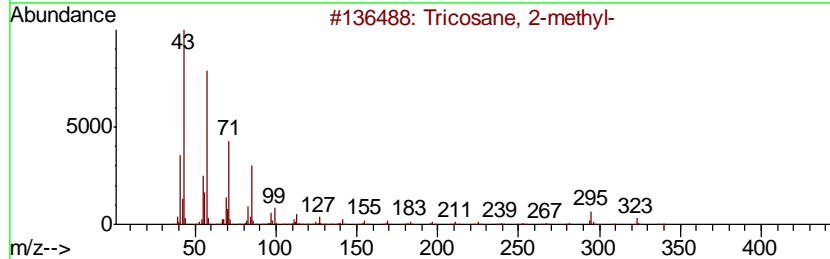
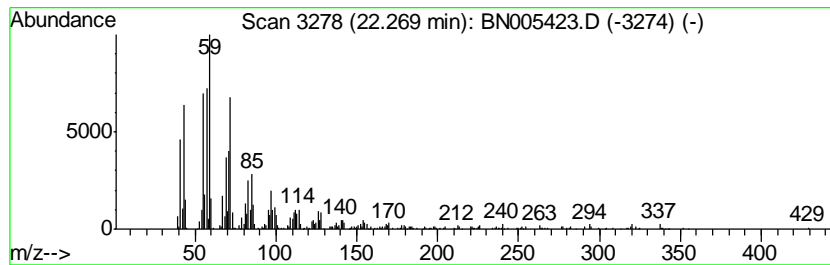
Quant Method : Z:\SVOASRV\HPCHEM1\BNA_N\METHODS\SOM-EPA-BN041919MA.M
 Quant Title : SVOA CALIBRATION

TIC Library : C:\DATABASE\NIST02.L
 TIC Integration Parameters: LSCINT.P

 Peak Number 4 (DEL) Alkane: Straight-Chai... Concentration Rank 3

R.T.	EstConc	Area	Relative to ISTD	R.T.
22.27	4.19 ng/ul	970266	Chrysene-d12	21.21

Hit#	of	Tentative ID	MW	MolForm	CAS#	Qual
1	5	Tricosane, 2-methyl-	338	C24H50	001928-30-9	60
2		1-Chloroeicosane	316	C20H41Cl	042217-02-7	59
3		Tetracosane, 9-octyl-	451	C32H66	055401-54-2	50
4		Heptadecane	240	C17H36	000629-78-7	50
5		Octadecane, 1-chloro-	288	C18H37Cl	003386-33-2	49



Data Path : Z:\SVOASRV\HPCHEM1\BNA N\DATA\BN050219\
 Data File : BN005423.D
 Acq On : 02 May 2019 19:36
 Operator : JU/SJ
 Sample : K2603-07
 Misc :
 ALS Vial : 9 Sample Multiplier: 1

Instrument :
 BNA_N
 ClientSampleId :
 GAJ59

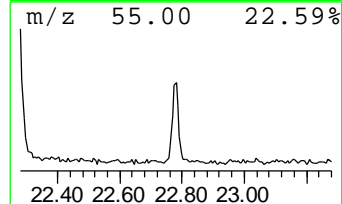
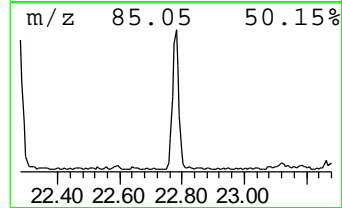
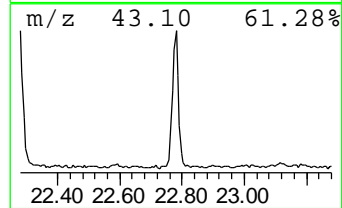
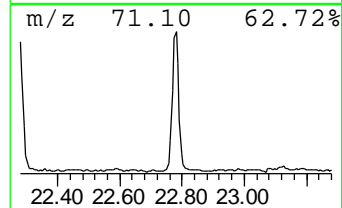
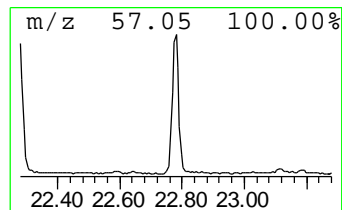
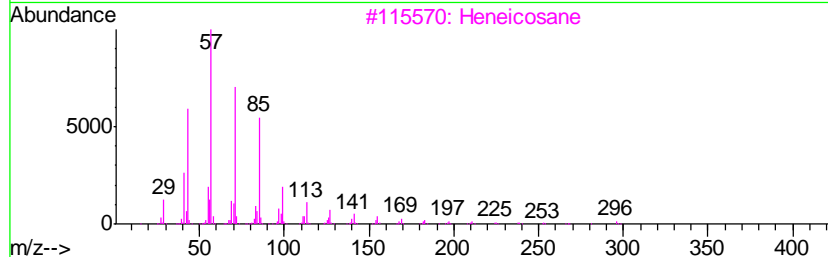
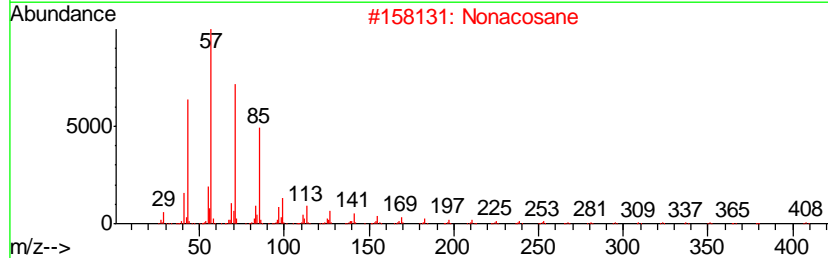
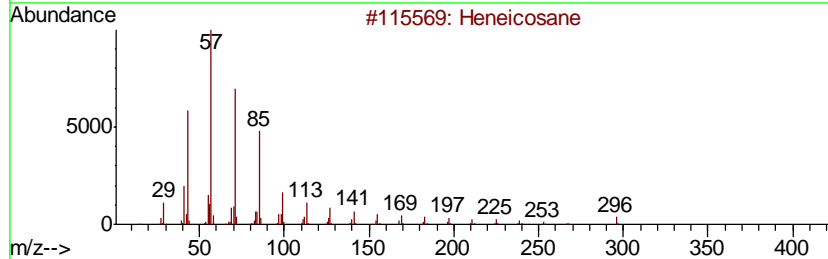
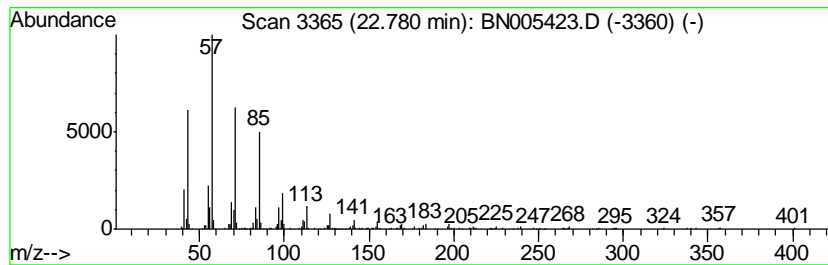
Quant Method : Z:\SVOASRV\HPCHEM1\BNA_N\METHODS\SOM-EPA-BN041919MA.M
 Quant Title : SVOA CALIBRATION

TIC Library : C:\DATABASE\NIST02.L
 TIC Integration Parameters: LSCINT.P

 Peak Number 5 (DEL) Alkane: Straight-Chai... Concentration Rank 5

R.T.	EstConc	Area	Relative to ISTD	R.T.
22.78	3.30 ng/ul	636245	Perylene-d12	23.41

Hit#	of	Tentative ID	MW	MolForm	CAS#	Qual
1	5	Heneicosane	296	C21H44	000629-94-7	93
2		Nonacosane	408	C29H60	000630-03-5	91
3		Heneicosane	296	C21H44	000629-94-7	91
4		Octacosane	394	C28H58	000630-02-4	91
5		Triacotane	422	C30H62	000638-68-6	91



Data Path : Z:\SVOASRV\HPCHEM1\BNA N\DATA\BN050219\
 Data File : BN005423.D
 Acq On : 02 May 2019 19:36
 Operator : JU/SJ
 Sample : K2603-07
 Misc :
 ALS Vial : 9 Sample Multiplier: 1

Instrument :
 BNA_N
 ClientSampleID :
 GAJ59

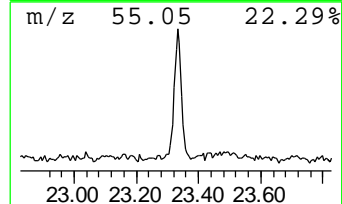
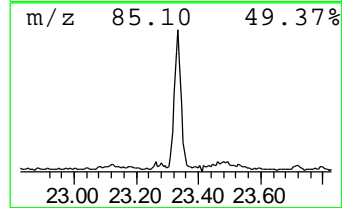
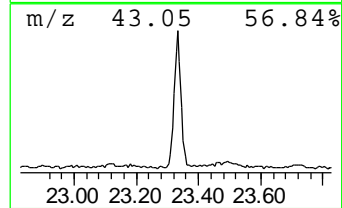
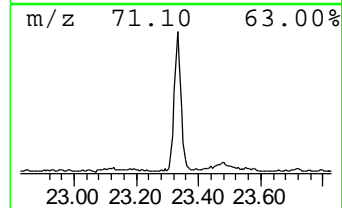
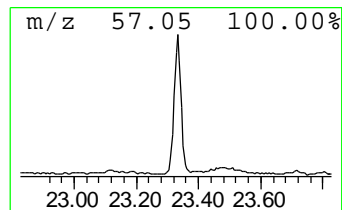
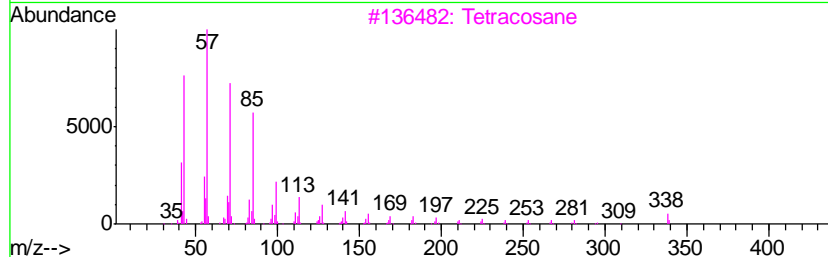
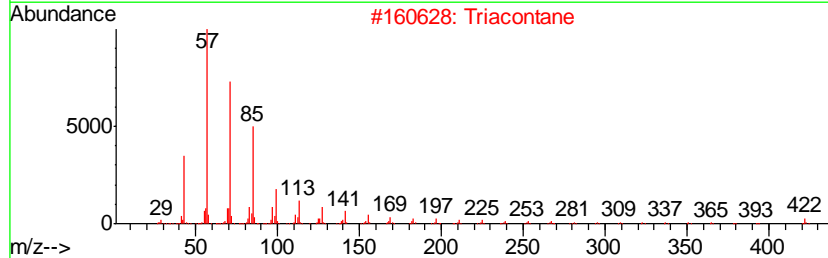
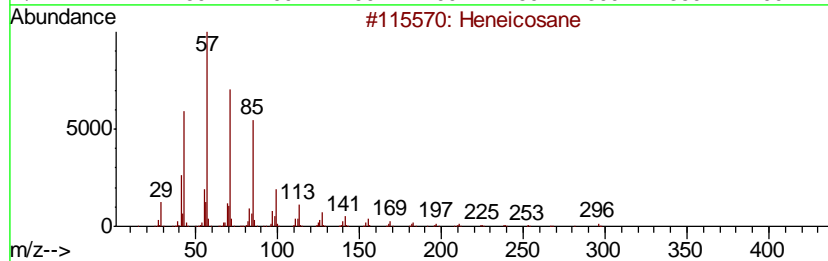
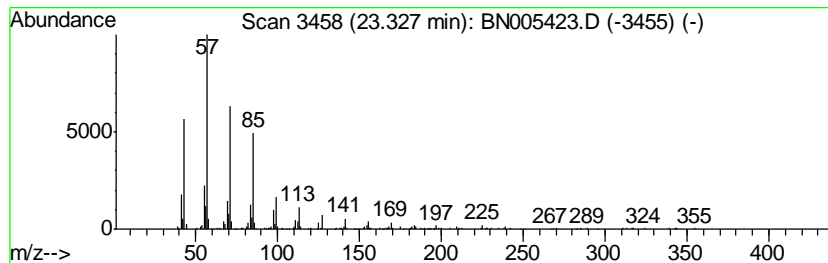
Quant Method : Z:\SVOASRV\HPCHEM1\BNA_N\METHODS\SOM-EPA-BN041919MA.M
 Quant Title : SVOA CALIBRATION

TIC Library : C:\DATABASE\NIST02.L
 TIC Integration Parameters: LSCINT.P

 Peak Number 6 (DEL) Alkane: Straight-Chai... Concentration Rank 4

R.T.	EstConc	Area	Relative to ISTD	R.T.
23.33	3.61 ng/ul	695601	Perylene-d12	23.41

Hit#	of	Tentative ID	MW	MolForm	CAS#	Qual
1	5	Heneicosane	296	C21H44	000629-94-7	91
2		Triacontane	422	C30H62	000638-68-6	91
3		Tetracosane	338	C24H50	000646-31-1	91
4		Pentadecane, 8-heptyl-	310	C22H46	071005-15-7	90
5		Octadecane	254	C18H38	000593-45-3	87



Data Path : Z:\SVOASRV\HPCHEM1\BNA N\DATA\BN050219\
 Data File : BN005423.D
 Acq On : 02 May 2019 19:36
 Operator : JU/SJ
 Sample : K2603-07
 Misc :
 ALS Vial : 9 Sample Multiplier: 1

Instrument :
 BNA_N
 ClientSampleID :
 GAJ59

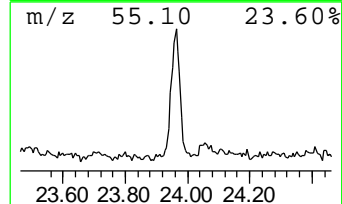
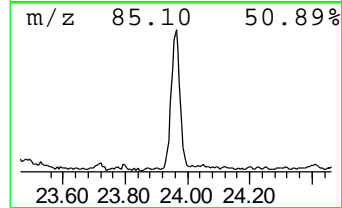
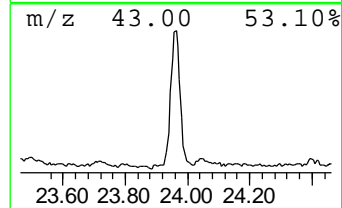
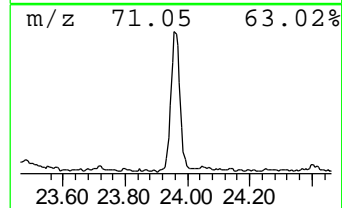
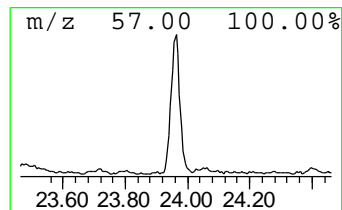
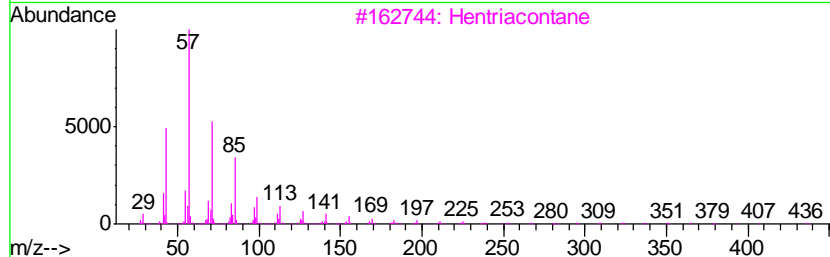
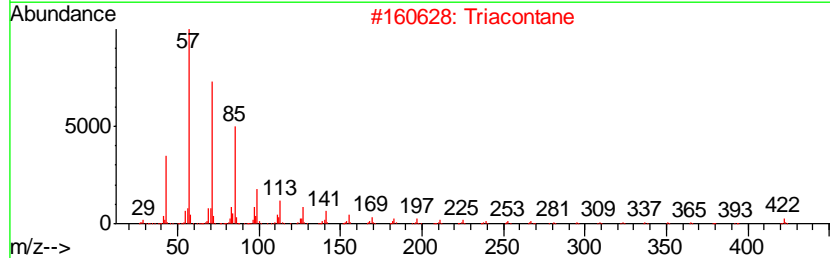
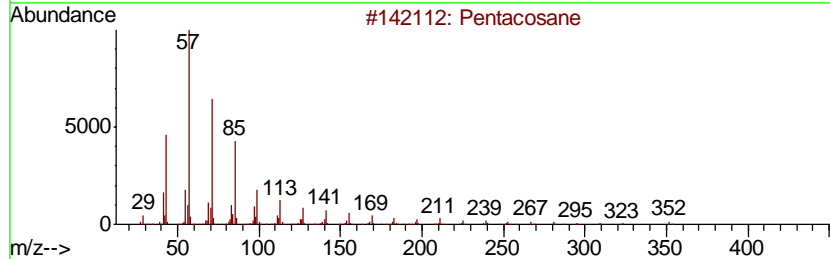
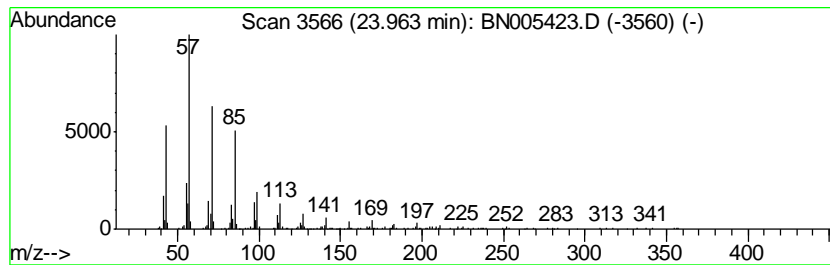
Quant Method : Z:\SVOASRV\HPCHEM1\BNA_N\METHODS\SOM-EPA-BN041919MA.M
 Quant Title : SVOA CALIBRATION

TIC Library : C:\DATABASE\NIST02.L
 TIC Integration Parameters: LSCINT.P

 Peak Number 7 (DEL) Alkane: Straight-Chai... Concentration Rank 6

R.T.	EstConc	Area	Relative to ISTD	R.T.
23.96	3.23 ng/ul	622370	Perylene-d12	23.41

Hit#	of	Tentative ID	MW	MolForm	CAS#	Qual
1	5	Pentacosane	352	C25H52	000629-99-2	91
2		Triacosane	422	C30H62	000638-68-6	90
3		Hentriacontane	437	C31H64	000630-04-6	90
4		Heneicosane	296	C21H44	000629-94-7	87
5		Pentadecane, 8-heptyl-	310	C22H46	071005-15-7	87



Data Path : Z:\SVOASRV\HPCHEM1\BNA N\DATA\BN050219\
 Data File : BN005423.D
 Acq On : 02 May 2019 19:36
 Operator : JU/SJ
 Sample : K2603-07
 Misc :
 ALS Vial : 9 Sample Multiplier: 1

Instrument :
 BNA_N
 ClientSampleID :
 GAJ59

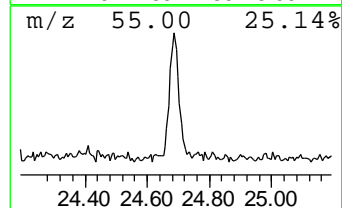
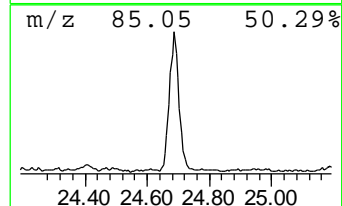
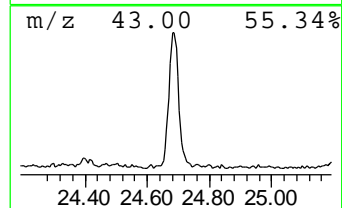
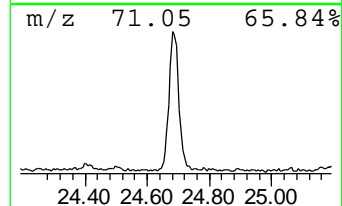
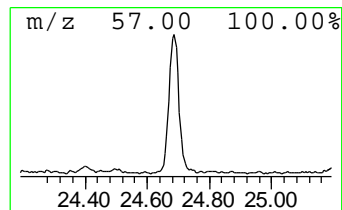
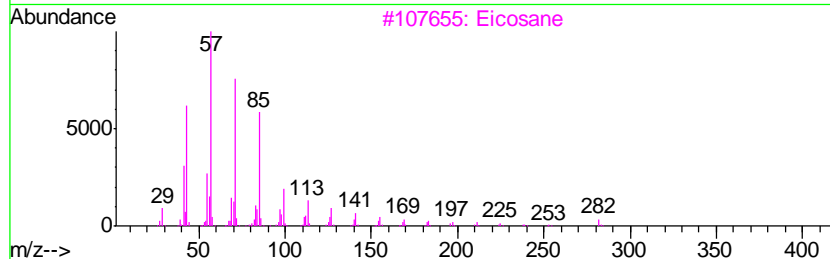
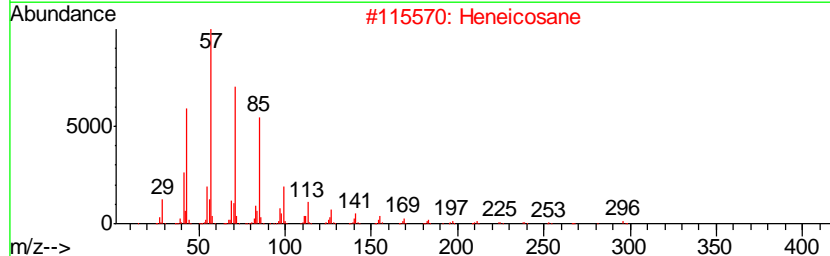
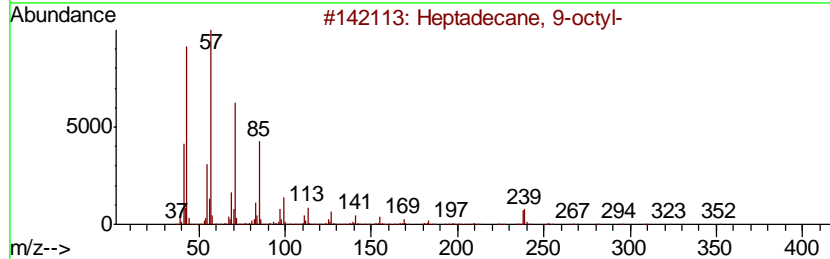
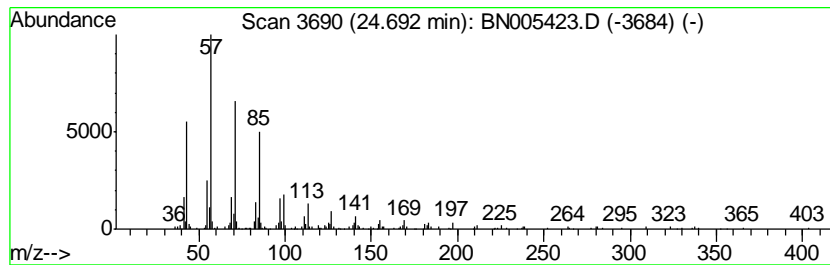
Quant Method : Z:\SVOASRV\HPCHEM1\BNA_N\METHODS\SOM-EPA-BN041919MA.M
 Quant Title : SVOA CALIBRATION

TIC Library : C:\DATABASE\NIST02.L
 TIC Integration Parameters: LSCINT.P

 Peak Number 8 (DEL) Alkane: Straight-Chai... Concentration Rank 7

R.T.	EstConc	Area	Relative to ISTD	R.T.
24.69	2.88 ng/ul	555411	Perylene-d12	23.41

Hit#	of	Tentative ID	MW	MolForm	CAS#	Qual
1	5	Heptadecane, 9-octyl-	352	C25H52	007225-64-1	91
2		Heneicosane	296	C21H44	000629-94-7	90
3		Eicosane	282	C20H42	000112-95-8	90
4		Tetratriacontane	479	C34H70	014167-59-0	90
5		Tetracosane	338	C24H50	000646-31-1	87



Data Path : Z:\SVOASRV\HPCHEM1\BNA_N\DATA\BN050219\
 Data File : BN005423.D
 Acq On : 02 May 2019 19:36
 Operator : JU/SJ
 Sample : K2603-07
 Misc :
 ALS Vial : 9 Sample Multiplier: 1

Instrument :
 BNA_N
 ClientSampleId :
 GAJ59

Quant Method : Z:\SVOASRV\HPCHEM1\BNA_N\METHODS\SOM-EPA-BN041919MA.M
 Quant Title : SVOA CALIBRATION

TIC Library : C:\DATABASE\NIST02.L
 TIC Integration Parameters: LSCINT.P

TIC Top Hit name	RT	EstConc	Units	Response	--Internal Standard--			
					#	RT	Resp	Conc
1,3,5-Cycloheptat...	3.91	2.6	ng/ul	201732	1	7.59	1534140	20.0
Resorcinol	11.40	12.4	ng/ul	1435610	2	10.35	2324270	20.0
n-Hexadecanoic acid	17.90	4.7	ng/ul	955472	4	16.98	4108220	20.0
(DEL) Alkane: Str...	22.27	4.2	ng/ul	970266	5	21.21	4632750	20.0
(DEL) Alkane: Str...	22.78	3.3	ng/ul	636245	6	23.41	3851270	20.0
(DEL) Alkane: Str...	23.33	3.6	ng/ul	695601	6	23.41	3851270	20.0
(DEL) Alkane: Str...	23.96	3.2	ng/ul	622370	6	23.41	3851270	20.0
(DEL) Alkane: Str...	24.69	2.9	ng/ul	555411	6	23.41	3851270	20.0