

Data Path : Z:\SVOASRV\HPCHEM1\BNA_N\DATA\BN050219\
 Data File : BN005440.D
 Acq On : 03 May 2019 05:56
 Operator : JU/SJ
 Sample : K2603-11 10X
 Misc :
 ALS Vial : 25 Sample Multiplier: 1

Instrument :
 BNA_N
 ClientSampleId :
 GAJ63

Integration Parameters: LSCINT.P

Integrator: RTE
 Smoothing : OFF
 Sampling : 1
 Start Thrs: 0.2
 Stop Thrs : 0

Filtering: 5
 Min Area: 0.1 % of largest Peak
 Max Peaks: 100
 Peak Location: TOP

If leading or trailing edge < 100 prefer < Baseline drop else tangent >
 Peak separation: 5

Method : Z:\SVOASRV\HPCHEM1\BNA_N\METHODS\SOM-EPA-BN041919MA.M
 Title : SVOA CALIBRATION

Signal : TIC

peak #	R.T. min	first scan	max scan	last scan	PK TY	peak height	corr. area	corr. % max.	% of total
1	5.628	445	449	457	rBV2	52528	86203	1.32%	0.143%
2	6.775	639	644	657	rVB	68121	129737	1.99%	0.215%
3	6.940	667	672	682	rVB	55333	91810	1.41%	0.152%
4	7.128	699	704	712	rBV	74371	119214	1.83%	0.197%
5	7.258	721	726	734	rVV2	39444	65926	1.01%	0.109%
6	7.593	776	783	794	rBV	1098695	1836352	28.22%	3.038%
7	8.299	896	903	914	rBV	74851	156430	2.40%	0.259%
8	8.740	972	978	988	rVV	68594	127439	1.96%	0.211%
9	9.452	1094	1099	1106	rBV2	53671	95974	1.47%	0.159%
10	9.993	1185	1191	1201	rBV2	57658	127605	1.96%	0.211%
11	10.352	1244	1252	1259	rBV	1650330	2786357	42.82%	4.610%
12	10.505	1270	1278	1289	rBV3	51562	153421	2.36%	0.254%
13	11.393	1424	1429	1436	rBV3	36388	72678	1.12%	0.120%
14	11.799	1493	1498	1506	rVV	58589	109456	1.68%	0.181%
15	12.022	1532	1536	1543	rVB5	29693	63555	0.98%	0.105%
16	12.769	1658	1663	1667	rVV	85829	114549	1.76%	0.190%
17	13.063	1704	1713	1720	rBV	223578	353676	5.43%	0.585%
18	13.640	1806	1811	1815	rVV	214451	321617	4.94%	0.532%
19	13.681	1815	1818	1823	rVV3	148423	291095	4.47%	0.482%
20	13.728	1823	1826	1830	rVV	128928	173439	2.67%	0.287%
21	13.769	1830	1833	1841	rVB2	45626	70484	1.08%	0.117%
22	13.910	1851	1857	1859	rBV	220888	331118	5.09%	0.548%
23	13.940	1859	1862	1872	rVB	348514	540911	8.31%	0.895%
24	14.146	1892	1897	1902	rBV	391919	483067	7.42%	0.799%
25	14.222	1902	1910	1926	rVV2	2404635	3898670	59.91%	6.451%
26	14.769	1999	2003	2007	rVB2	92984	125361	1.93%	0.207%
27	14.840	2010	2015	2020	rBV5	55475	97590	1.50%	0.161%
28	15.104	2055	2060	2065	rBV	414348	509960	7.84%	0.844%
29	15.222	2074	2080	2088	rVB	292275	462096	7.10%	0.765%
30	15.363	2101	2104	2109	rBV7	23037	41247	0.63%	0.068%
31	15.510	2121	2129	2134	rBV2	126553	236562	3.64%	0.391%
32	15.604	2143	2145	2151	rVB6	40192	49278	0.76%	0.082%
33	15.669	2151	2156	2160	rBV3	33922	53680	0.82%	0.089%
34	15.969	2201	2207	2210	rBV2	407787	595064	9.14%	0.985%

Data Path : Z:\SVOASRV\HPCHEM1\BNA_N\DATA\BN050219\
 Data File : BN005440.D
 Acq On : 03 May 2019 05:56
 Operator : JU/SJ
 Sample : K2603-11 10X
 Misc :
 ALS Vial : 25 Sample Multiplier: 1

Instrument :
 BNA_N
 ClientSampleId :
 GAJ63

Integration Parameters: LSCINT.P

Integrator: RTE
 Smoothing : OFF
 Sampling : 1
 Start Thrs: 0.2
 Stop Thrs : 0

Filtering: 5
 Min Area: 0.1 % of largest Peak
 Max Peaks: 100
 Peak Location: TOP

If leading or trailing edge < 100 prefer < Baseline drop else tangent >
 Peak separation: 5

Method : Z:\SVOASRV\HPCHEM1\BNA_N\METHODS\SOM-EPA-BN041919MA.M
 Title : SVOA CALIBRATION

35	16.557	2303	2307	2313	rVB4	40761	81036	1.25%	0.134%
36	16.763	2338	2342	2346	rVV	273180	328471	5.05%	0.543%
37	16.816	2346	2351	2358	rVB3	78164	138514	2.13%	0.229%
38	16.981	2372	2379	2390	rBV2	2888422	4616504	70.94%	7.638%
39	17.075	2391	2395	2399	rVV2	318951	516491	7.94%	0.855%
40	17.110	2399	2401	2408	rVB	128213	186825	2.87%	0.309%
41	17.504	2464	2468	2473	rVB2	229288	271894	4.18%	0.450%
42	17.663	2490	2495	2505	rVB2	107055	209651	3.22%	0.347%
43	17.904	2531	2536	2542	rBV4	49706	84114	1.29%	0.139%
44	17.986	2546	2550	2554	rVB	50977	65101	1.00%	0.108%
45	18.045	2555	2560	2566	rBV2	186735	352656	5.42%	0.583%
46	18.198	2580	2586	2589	rBV2	117069	154817	2.38%	0.256%
47	18.257	2593	2596	2602	rVB2	39024	62271	0.96%	0.103%
48	18.363	2610	2614	2618	rVV2	100094	143849	2.21%	0.238%
49	18.410	2618	2622	2627	rVB3	109958	173730	2.67%	0.287%
50	18.586	2648	2652	2655	rBV5	41621	66707	1.03%	0.110%
51	18.663	2663	2665	2670	rVB	54742	68679	1.06%	0.114%
52	18.704	2670	2672	2677	rVB4	43080	54414	0.84%	0.090%
53	18.786	2682	2686	2692	rBV3	187770	349604	5.37%	0.578%
54	18.845	2692	2696	2700	rVV5	153896	242893	3.73%	0.402%
55	18.881	2700	2702	2705	rVB	68940	69449	1.07%	0.115%
56	18.928	2705	2710	2718	rBV	683310	1085833	16.69%	1.797%
57	19.051	2726	2731	2739	rVB	1102626	1496499	23.00%	2.476%
58	19.128	2739	2744	2747	rBV2	68753	113497	1.74%	0.188%
59	19.204	2753	2757	2762	rVB	247742	340354	5.23%	0.563%
60	19.263	2763	2767	2769	rBV2	70435	89540	1.38%	0.148%
61	19.298	2770	2773	2774	rVV	71381	81594	1.25%	0.135%
62	19.322	2774	2777	2784	rVB	164354	257376	3.95%	0.426%
63	19.422	2789	2794	2802	rVV	3005880	4449422	68.37%	7.362%
64	19.504	2804	2808	2814	rVB2	99209	176992	2.72%	0.293%
65	19.604	2821	2825	2828	rBV2	44140	72357	1.11%	0.120%
66	19.663	2831	2835	2842	rVB3	148236	236349	3.63%	0.391%
67	19.751	2846	2850	2860	rBV4	277233	564532	8.67%	0.934%
68	19.845	2862	2866	2868	rBV4	57588	78342	1.20%	0.130%
69	19.898	2869	2875	2884	rVB3	369913	1073634	16.50%	1.776%
70	19.975	2885	2888	2890	rBV4	45122	59210	0.91%	0.098%
71	20.028	2893	2897	2901	rVB2	121640	147071	2.26%	0.243%

Data Path : Z:\SVOASRV\HPCHEM1\BNA_N\DATA\BN050219\
 Data File : BN005440.D
 Acq On : 03 May 2019 05:56
 Operator : JU/SJ
 Sample : K2603-11 10X
 Misc :
 ALS Vial : 25 Sample Multiplier: 1

Instrument :
 BNA_N
 ClientSampleId :
 GAJ63

Integration Parameters: LSCINT.P

Integrator: RTE
 Smoothing : OFF
 Sampling : 1
 Start Thrs: 0.2
 Stop Thrs : 0

Filtering: 5
 Min Area: 0.1 % of largest Peak
 Max Peaks: 100
 Peak Location: TOP

If leading or trailing edge < 100 prefer < Baseline drop else tangent >
 Peak separation: 5

Method : Z:\SVOASRV\HPCHEM1\BNA_N\METHODS\SOM-EPA-BN041919MA.M
 Title : SVOA CALIBRATION

72	20.086	2902	2907	2911	rBV	493077	686539	10.55%	1.136%
73	20.222	2926	2930	2934	rVV	488770	597097	9.18%	0.988%
74	20.269	2934	2938	2943	rVB	406698	540315	8.30%	0.894%
75	20.480	2972	2974	2979	rVB5	53475	61317	0.94%	0.101%
76	20.592	2991	2993	2997	rBV5	44777	47412	0.73%	0.078%
77	20.680	3005	3008	3014	rVB2	140327	231916	3.56%	0.384%
78	20.775	3021	3024	3027	rBV	70073	72971	1.12%	0.121%
79	20.886	3040	3043	3046	rBV	142073	143570	2.21%	0.238%
80	20.922	3046	3049	3056	rBV	297024	447851	6.88%	0.741%
81	21.210	3090	3098	3102	rBV2	3788626	6507689	100.00%	10.767%
82	21.245	3102	3104	3111	rVB	624570	810489	12.45%	1.341%
83	21.328	3116	3118	3121	rVB2	66793	63823	0.98%	0.106%
84	21.386	3126	3128	3130	rBV3	78960	85869	1.32%	0.142%
85	21.416	3130	3133	3138	rBV	268371	352860	5.42%	0.584%
86	21.575	3157	3160	3163	rBV4	122549	144825	2.23%	0.240%
87	21.757	3185	3191	3196	rVB	318225	559156	8.59%	0.925%
88	21.816	3197	3201	3206	rVB2	181900	289046	4.44%	0.478%
89	21.951	3221	3224	3227	rBV2	167375	172514	2.65%	0.285%
90	22.275	3277	3279	3288	rVB2	226220	353024	5.42%	0.584%
91	22.757	3355	3361	3373	rBV	1074829	3267424	50.21%	5.406%
92	22.922	3385	3389	3398	rVB	311688	556468	8.55%	0.921%
93	23.216	3434	3439	3445	rBV	727644	1357577	20.86%	2.246%
94	23.269	3445	3448	3450	rVV2	153981	197012	3.03%	0.326%
95	23.316	3450	3456	3463	rVB	1306874	2527330	38.84%	4.182%
96	23.410	3465	3472	3478	rBV	2182892	4066042	62.48%	6.727%
97	23.957	3561	3565	3571	rVB2	236162	430273	6.61%	0.712%
98	24.680	3684	3688	3696	rVB3	148927	287188	4.41%	0.475%
99	25.586	3836	3842	3852	rVB2	467533	1296365	19.92%	2.145%
100	26.251	3949	3955	3967	rVB2	346857	953609	14.65%	1.578%

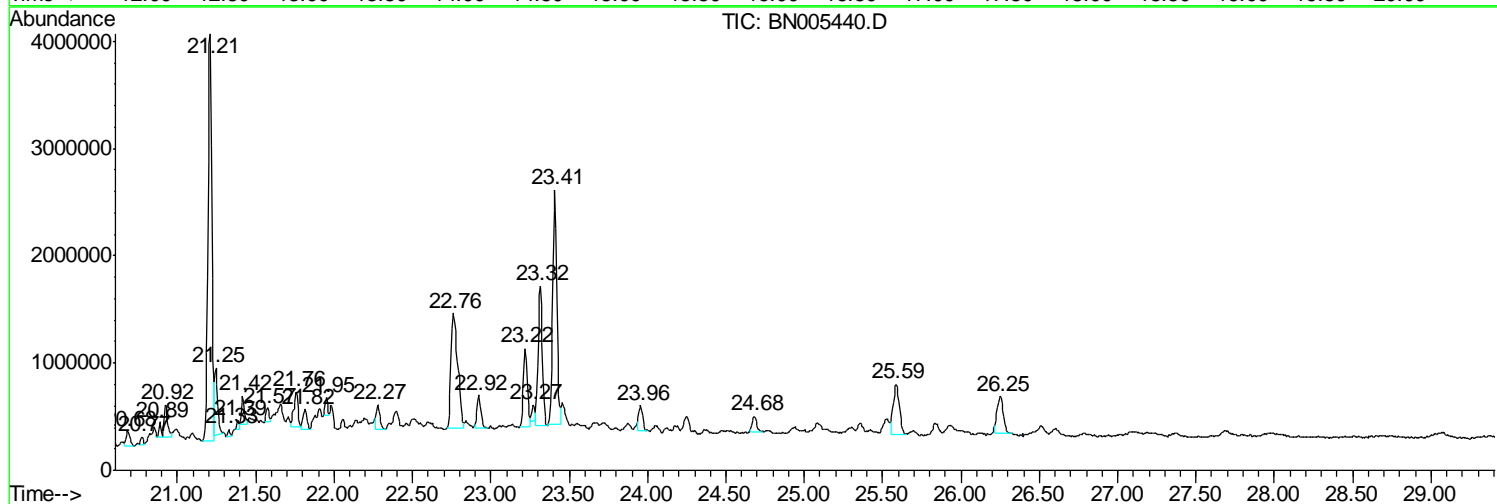
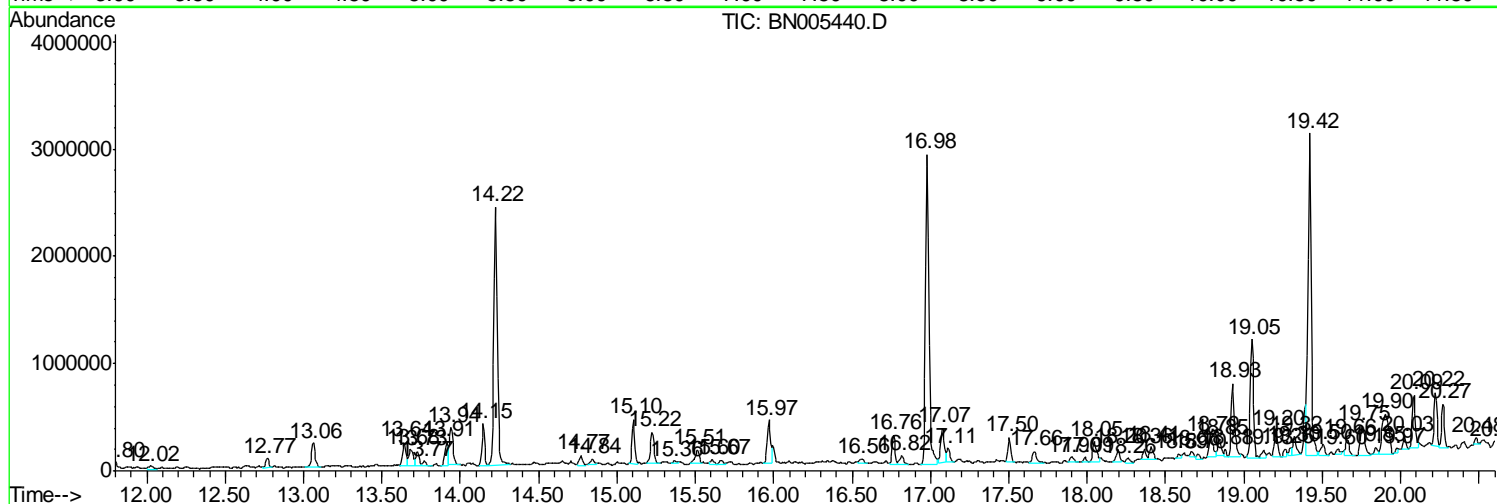
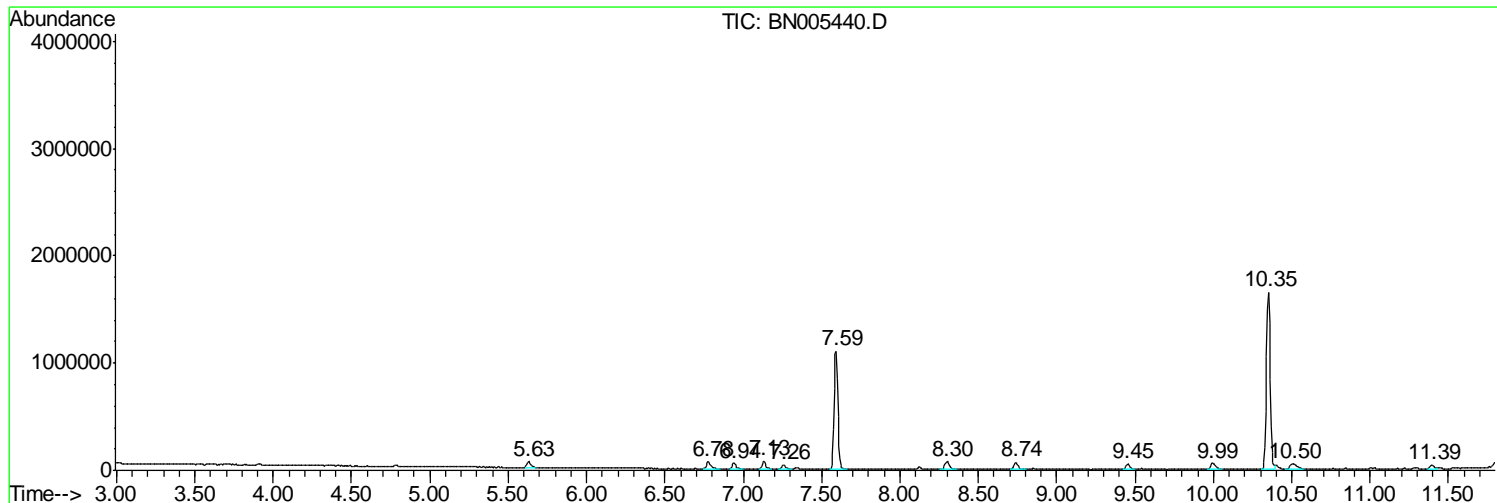
Sum of corrected areas: 60439464

Data Path : Z:\SVOASRV\HPCHEM1\BNA N\DATA\BN050219\
 Data File : BN005440.D
 Acq On : 03 May 2019 05:56
 Operator : JU/SJ
 Sample : K2603-11 10X
 Misc :
 ALS Vial : 25 Sample Multiplier: 1

Instrument :
 BNA_N
 ClientSampleId :
 GAJ63

Quant Method : Z:\SVOASRV\HPCHEM1\BNA_N\METHODS\SOM-EPA-BN041919MA.M
 Quant Title : SVOA CALIBRATION

TIC Library : C:\DATABASE\NIST02.L
 TIC Integration Parameters: LSCINT.P



Data Path : Z:\SVOASRV\HPCHEM1\BNA N\DATA\BN050219\
 Data File : BN005440.D
 Acq On : 03 May 2019 05:56
 Operator : JU/SJ
 Sample : K2603-11 10X
 Misc :
 ALS Vial : 25 Sample Multiplier: 1

Instrument :
 BNA_N
 ClientSampleID :
 GAJ63

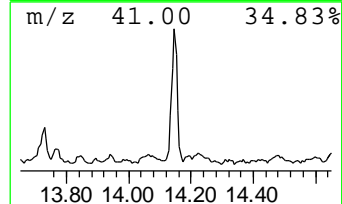
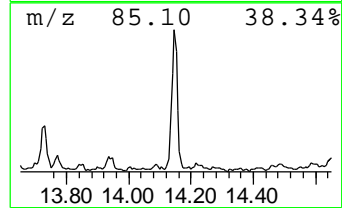
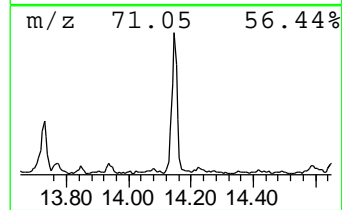
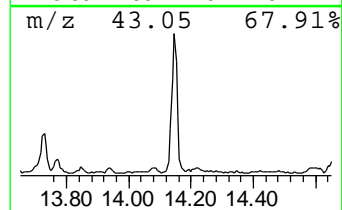
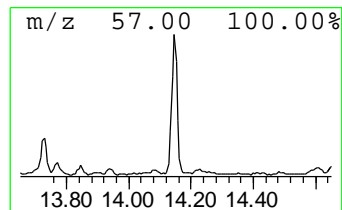
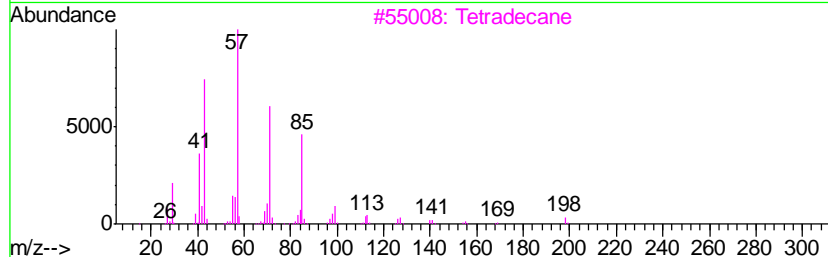
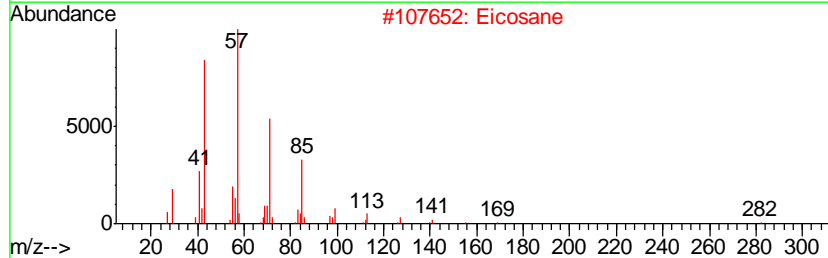
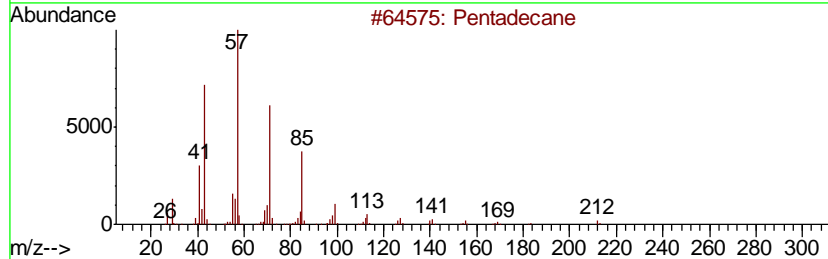
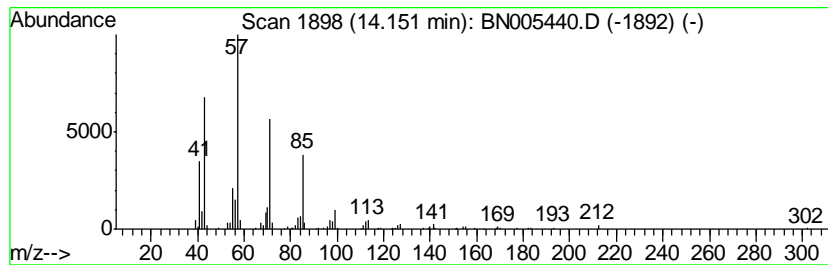
Quant Method : Z:\SVOASRV\HPCHEM1\BNA_N\METHODS\SOM-EPA-BN041919MA.M
 Quant Title : SVOA CALIBRATION

TIC Library : C:\DATABASE\NIST02.L
 TIC Integration Parameters: LSCINT.P

 Peak Number 1 (DEL) Alkane: Straight-Chai... Concentration Rank 7

R.T.	EstConc	Area	Relative to ISTD	R.T.
14.15	2.48 ng/ul	483067	Acenaphthene-d10	14.22

Hit#	of	Tentative ID	MW	MolForm	CAS#	Qual
1	5	Pentadecane	212	C15H32	000629-62-9	96
2		Eicosane	282	C20H42	000112-95-8	91
3		Tetradecane	198	C14H30	000629-59-4	91
4		Tridecane	184	C13H28	000629-50-5	90
5		Tridecane	184	C13H28	000629-50-5	90



Data Path : Z:\SVOASRV\HPCHEM1\BNA N\DATA\BN050219\
 Data File : BN005440.D
 Acq On : 03 May 2019 05:56
 Operator : JU/SJ
 Sample : K2603-11 10X
 Misc :
 ALS Vial : 25 Sample Multiplier: 1

Instrument :
 BNA_N
 ClientSampled :
 GAJ63

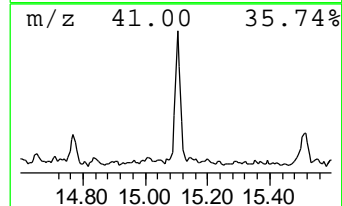
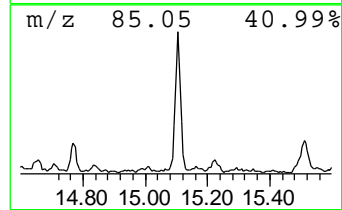
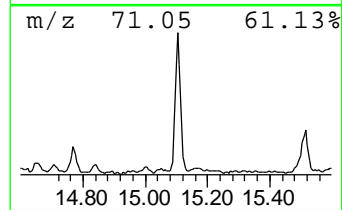
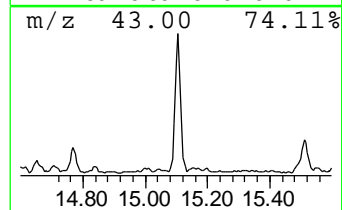
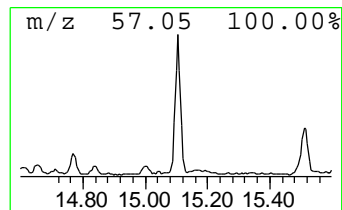
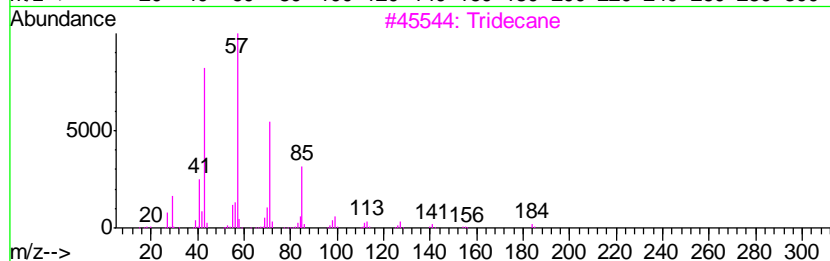
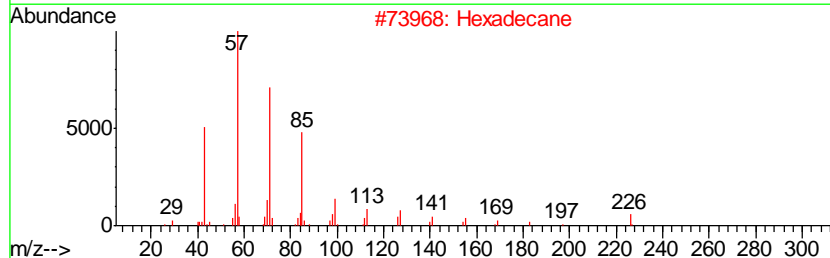
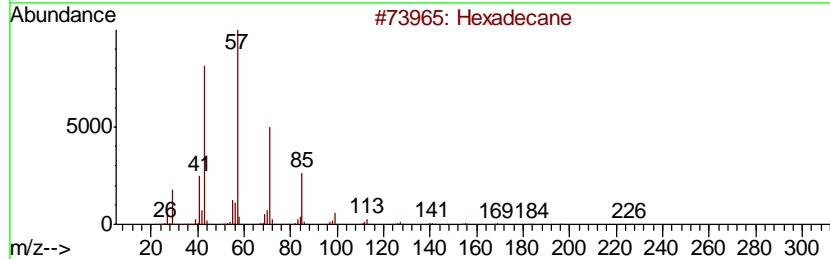
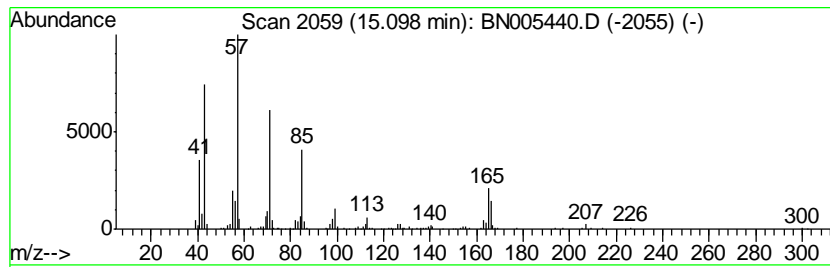
Quant Method : Z:\SVOASRV\HPCHEM1\BNA_N\METHODS\SOM-EPA-BN041919MA.M
 Quant Title : SVOA CALIBRATION

TIC Library : C:\DATABASE\NIST02.L
 TIC Integration Parameters: LSCINT.P

 Peak Number 2 (DEL) Alkane: Straight-Chai... Concentration Rank 5

R.T.	EstConc	Area	Relative to ISTD	R.T.
15.10	2.62 ng/ul	509960	Acenaphthene-d10	14.22

Hit#	of	Tentative ID	MW	MolForm	CAS#	Qual
1	5	Hexadecane	226	C16H34	000544-76-3	95
2		Hexadecane	226	C16H34	000544-76-3	87
3		Tridecane	184	C13H28	000629-50-5	72
4		Nonadecane	268	C19H40	000629-92-5	72
5		Eicosane	282	C20H42	000112-95-8	62



Data Path : Z:\SVOASRV\HPCHEM1\BNA N\DATA\BN050219\
 Data File : BN005440.D
 Acq On : 03 May 2019 05:56
 Operator : JU/SJ
 Sample : K2603-11 10X
 Misc :
 ALS Vial : 25 Sample Multiplier: 1

Instrument :
 BNA_N
 ClientSampleID :
 GAJ63

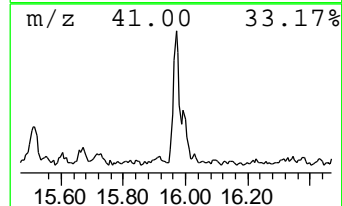
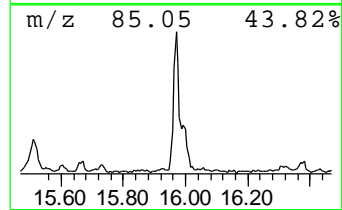
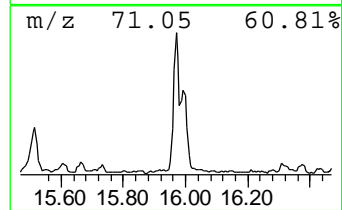
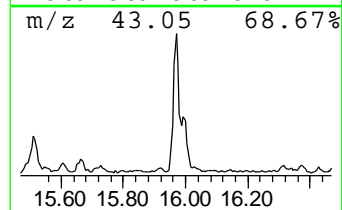
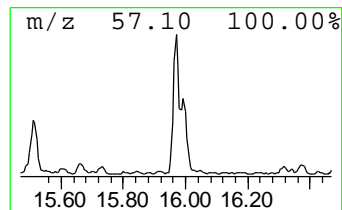
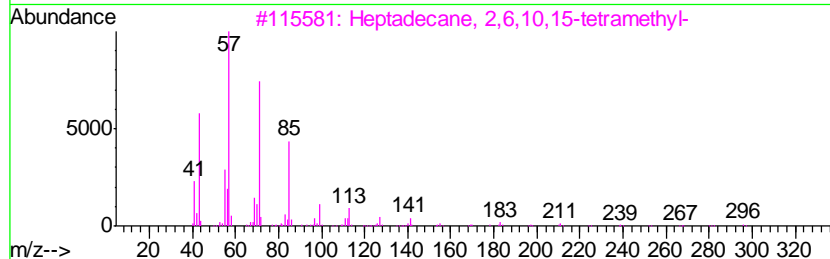
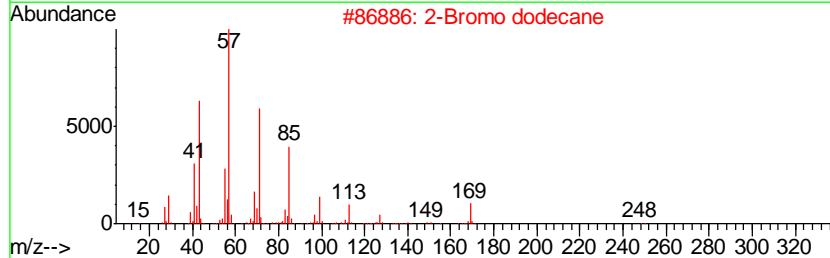
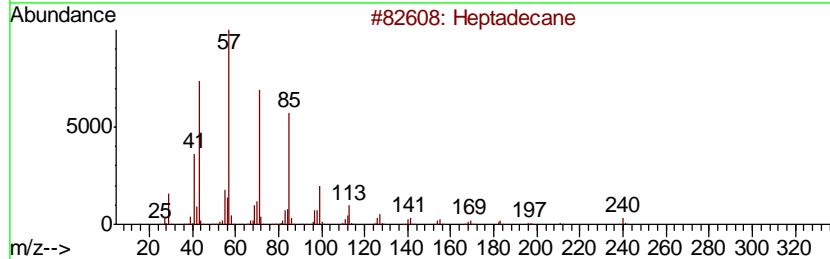
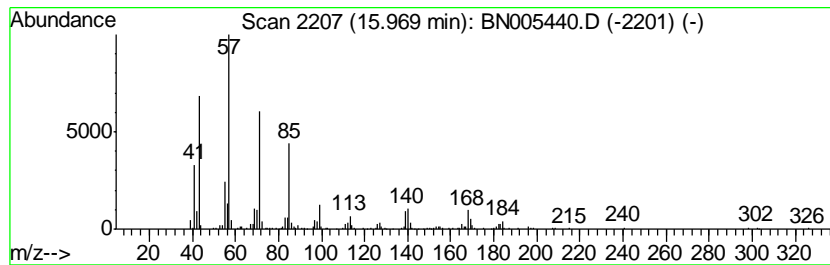
Quant Method : Z:\SVOASRV\HPCHEM1\BNA_N\METHODS\SOM-EPA-BN041919MA.M
 Quant Title : SVOA CALIBRATION

TIC Library : C:\DATABASE\NIST02.L
 TIC Integration Parameters: LSCINT.P

 Peak Number 3 (DEL) Alkane: Straight-Chai... Concentration Rank 6

R.T.	EstConc	Area	Relative to ISTD	R.T.
15.97	2.58 ng/ul	595064	Phenanthrene-d10	16.98

Hit#	of	Tentative ID	MW	MolForm	CAS#	Qual
1	5	Heptadecane	240	C17H36	000629-78-7	93
2		2-Bromo dodecane	248	C12H25Br	013187-99-0	64
3		Heptadecane, 2,6,10,15-tetramethyl-	296	C21H44	054833-48-6	62
4		Tridecane, 2-methyl-	198	C14H30	001560-96-9	62
5		Octadecane	254	C18H38	000593-45-3	62



Data Path : Z:\SVOASRV\HPCHEM1\BNA N\DATA\BN050219\
 Data File : BN005440.D
 Acq On : 03 May 2019 05:56
 Operator : JU/SJ
 Sample : K2603-11 10X
 Misc :
 ALS Vial : 25 Sample Multiplier: 1

Instrument :
 BNA_N
 ClientSampleId :
 GAJ63

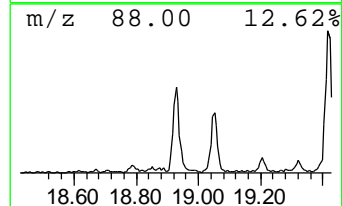
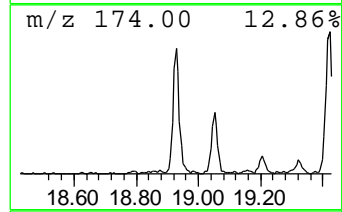
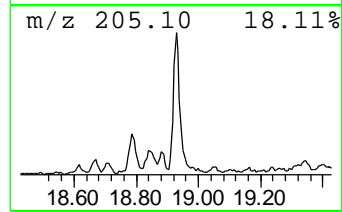
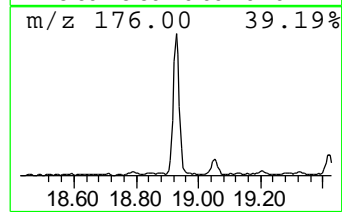
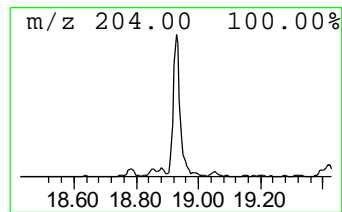
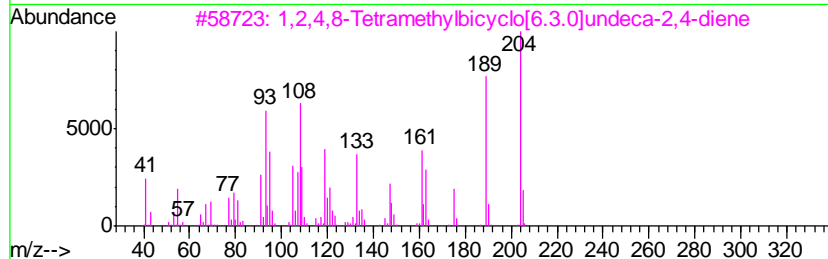
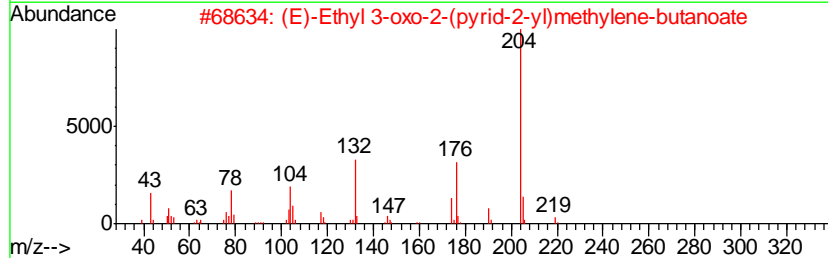
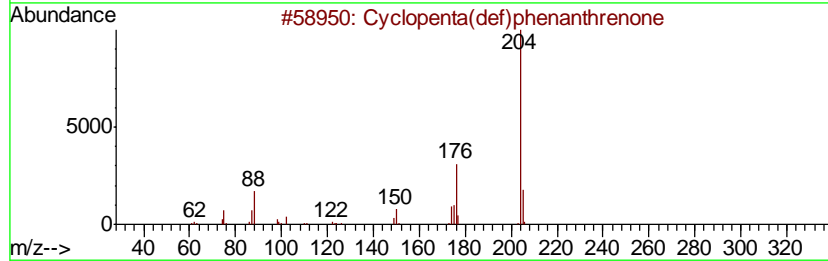
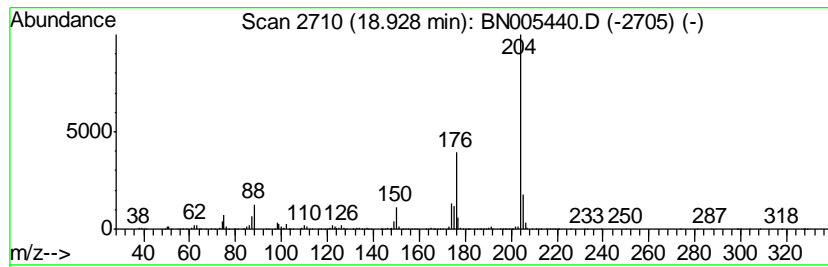
Quant Method : Z:\SVOASRV\HPCHEM1\BNA_N\METHODS\SOM-EPA-BN041919MA.M
 Quant Title : SVOA CALIBRATION

TIC Library : C:\DATABASE\NIST02.L
 TIC Integration Parameters: LSCINT.P

 Peak Number 4 Cyclopenta(def)phenanthrenone Concentration Rank 2

R.T.	EstConc	Area	Relative to ISTD	R.T.
18.93	4.70 ng/ul	1085830	Phenanthrene-d10	16.98

Hit#	of	Tentative ID	MW	MolForm	CAS#	Qual
1	5	Cyclopenta(def)phenanthrenone	204	C15H8O	005737-13-3	94
2		(E)-Ethyl 3-oxo-2-(pyrid-2-yl)me...	219	C12H13NO3	1000147-59-7	50
3		1,2,4,8-Tetramethylbicyclo[6.3.0...	204	C15H24	137235-51-9	43
4		3,4-Biphenyldicarbonitrile	204	C14H8N2	004128-63-6	42
5		[1,1'-Biphenyl]-2,2'-dicarbonitrile	204	C14H8N2	004341-02-0	42



Data Path : Z:\SVOASRV\HPCHEM1\BNA N\DATA\BN050219\
 Data File : BN005440.D
 Acq On : 03 May 2019 05:56
 Operator : JU/SJ
 Sample : K2603-11 10X
 Misc :
 ALS Vial : 25 Sample Multiplier: 1

Instrument :
 BNA_N
 ClientSampled :
 GAJ63

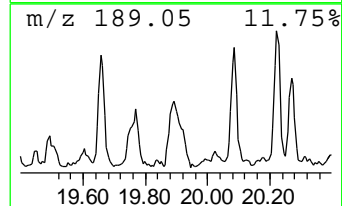
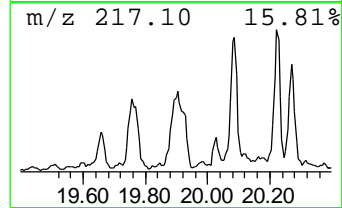
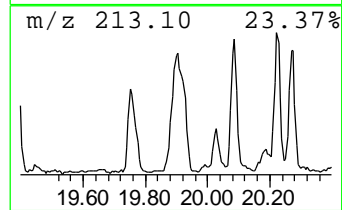
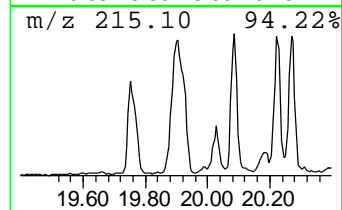
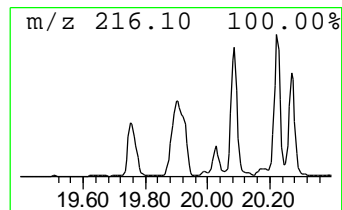
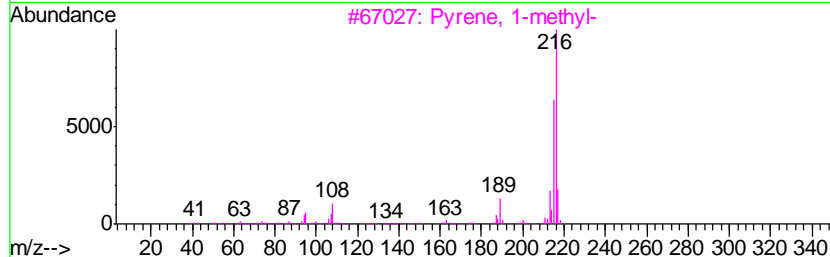
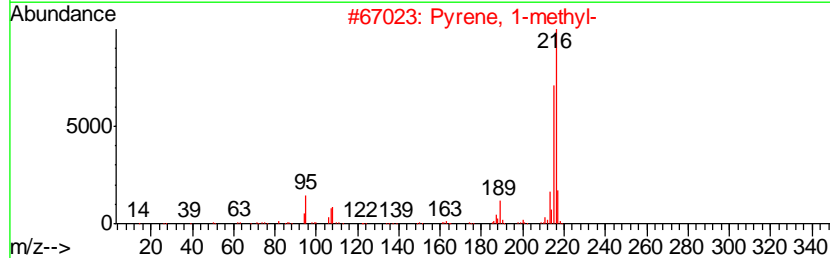
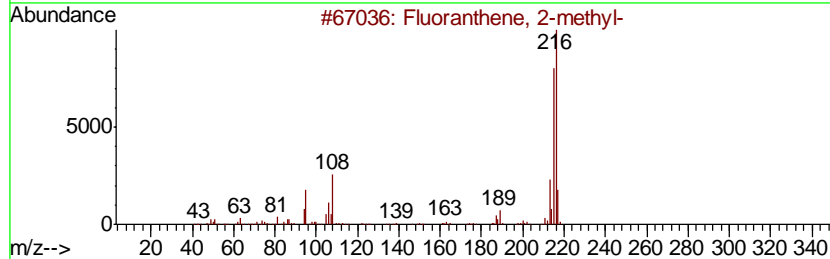
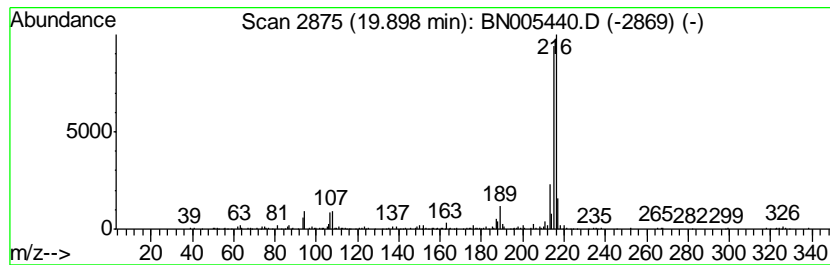
Quant Method : Z:\SVOASRV\HPCHEM1\BNA_N\METHODS\SOM-EPA-BN041919MA.M
 Quant Title : SVOA CALIBRATION

TIC Library : C:\DATABASE\NIST02.L
 TIC Integration Parameters: LSCINT.P

 Peak Number 5 Fluoranthene, 2-methyl- Concentration Rank 3

R.T.	EstConc	Area	Relative to ISTD	R.T.
19.90	3.30 ng/ul	1073630	Chrysene-d12	21.21

Hit#	of	Tentative ID	MW	MolForm	CAS#	Qual
1	5	Fluoranthene, 2-methyl-	216	C17H12	033543-31-6	96
2		Pyrene, 1-methyl-	216	C17H12	002381-21-7	93
3		Pyrene, 1-methyl-	216	C17H12	002381-21-7	92
4		11H-Benzo[a]fluorene	216	C17H12	000238-84-6	91
5		11H-Benzo[b]fluorene	216	C17H12	000243-17-4	87



Data Path : Z:\SVOASRV\HPCHEM1\BNA N\DATA\BN050219\
 Data File : BN005440.D
 Acq On : 03 May 2019 05:56
 Operator : JU/SJ
 Sample : K2603-11 10X
 Misc :
 ALS Vial : 25 Sample Multiplier: 1

Instrument :
 BNA_N
 ClientSampled :
 GAJ63

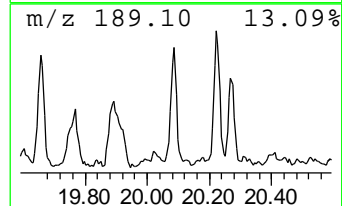
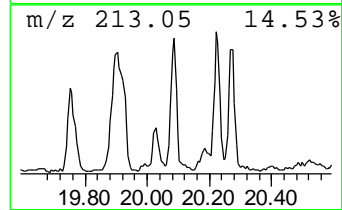
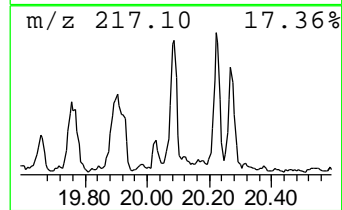
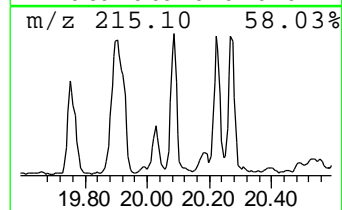
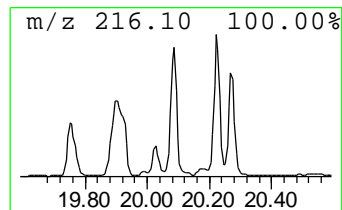
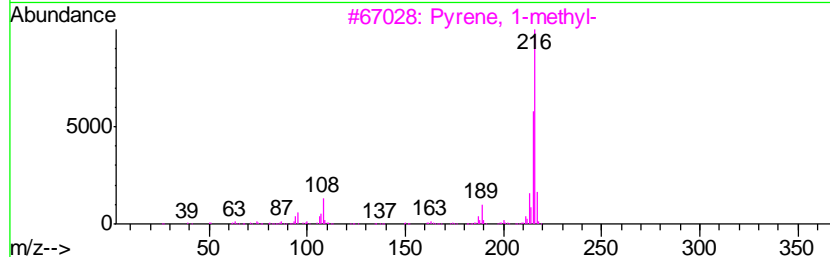
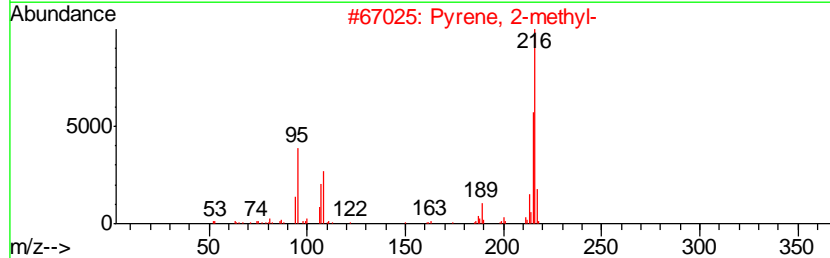
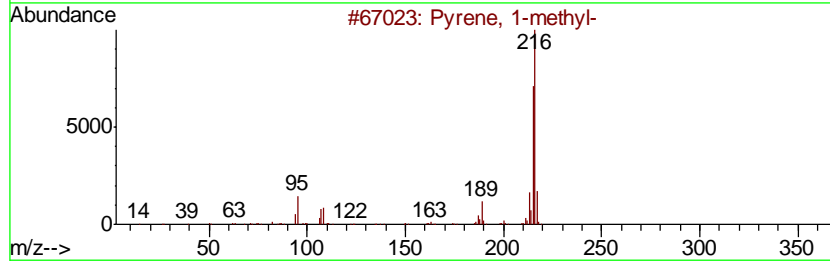
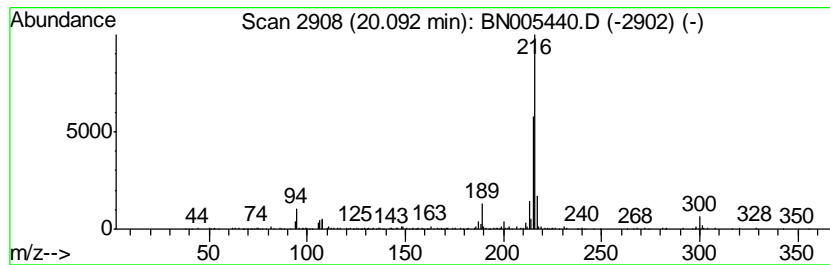
Quant Method : Z:\SVOASRV\HPCHEM1\BNA_N\METHODS\SOM-EPA-BN041919MA.M
 Quant Title : SVOA CALIBRATION

TIC Library : C:\DATABASE\NIST02.L
 TIC Integration Parameters: LSCINT.P

 Peak Number 6 Pyrene, 1-methyl- Concentration Rank 9

R.T.	EstConc	Area	Relative to ISTD	R.T.
20.09	2.11 ng/ul	686539	Chrysene-d12	21.21

Hit#	of	Tentative ID	MW	MolForm	CAS#	Qual
1	5	Pyrene, 1-methyl-	216	C17H12	002381-21-7	96
2		Pyrene, 2-methyl-	216	C17H12	003442-78-2	93
3		Pyrene, 1-methyl-	216	C17H12	002381-21-7	93
4		Fluoranthene, 2-methyl-	216	C17H12	033543-31-6	90
5		11H-Benzo[a]fluorene	216	C17H12	000238-84-6	90



Data Path : Z:\SVOASRV\HPCHEM1\BNA N\DATA\BN050219\
 Data File : BN005440.D
 Acq On : 03 May 2019 05:56
 Operator : JU/SJ
 Sample : K2603-11 10X
 Misc :
 ALS Vial : 25 Sample Multiplier: 1

Instrument :
 BNA_N
 ClientSampleID :
 GAJ63

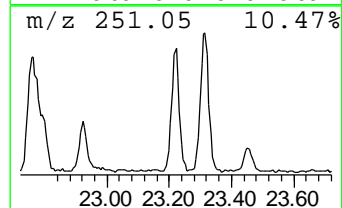
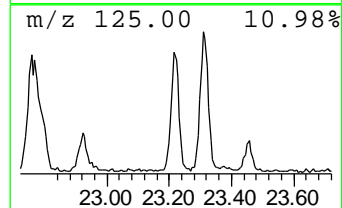
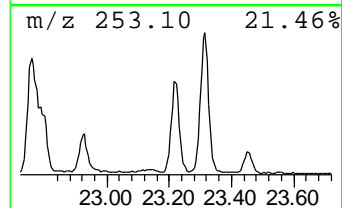
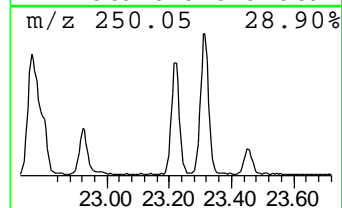
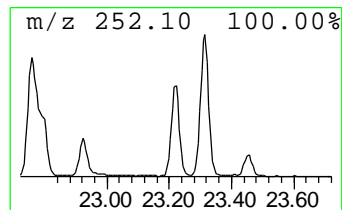
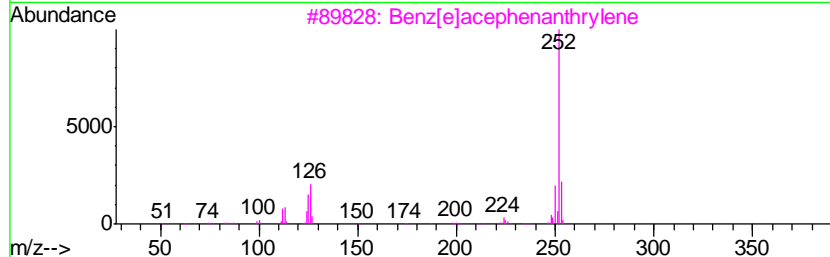
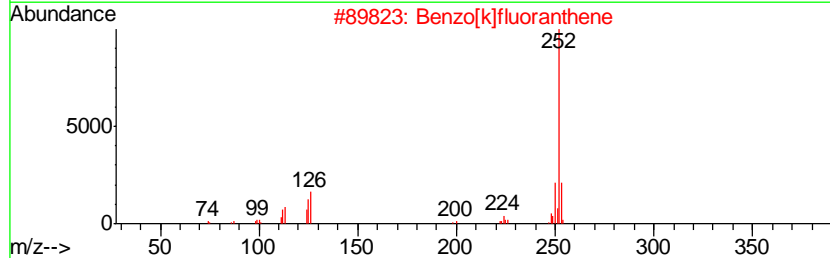
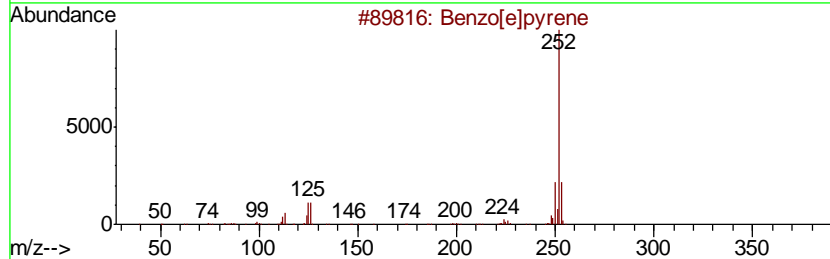
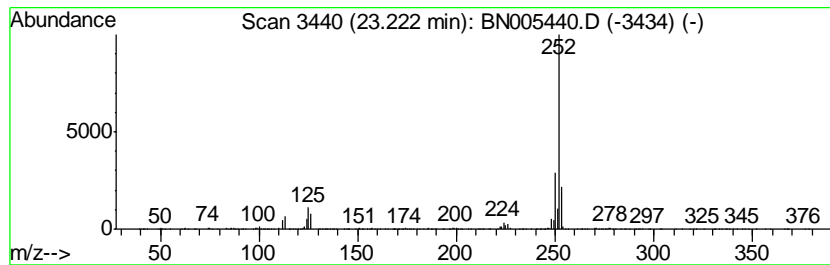
Quant Method : Z:\SVOASRV\HPCHEM1\BNA_N\METHODS\SOM-EPA-BN041919MA.M
 Quant Title : SVOA CALIBRATION

TIC Library : C:\DATABASE\NIST02.L
 TIC Integration Parameters: LSCINT.P

 Peak Number 8 Benzo[e]pyrene Concentration Rank 1

R.T.	EstConc	Area	Relative to ISTD	R.T.
23.22	6.68 ng/ul	1357580	Perylene-d12	23.41

Hit#	of	Tentative ID	MW	MolForm	CAS#	Qual
1	5	Benzo[e]pyrene	252	C20H12	000192-97-2	99
2		Benzo[k]fluoranthene	252	C20H12	000207-08-9	98
3		Benz[e]acephenanthrylene	252	C20H12	000205-99-2	94
4		Perylene	252	C20H12	000198-55-0	93
5		Benzo[a]pyrene	252	C20H12	000050-32-8	93



Data Path : Z:\SVOASRV\HPCHEM1\BNA N\DATA\BN050219\
 Data File : BN005440.D
 Acq On : 03 May 2019 05:56
 Operator : JU/SJ
 Sample : K2603-11 10X
 Misc :
 ALS Vial : 25 Sample Multiplier: 1

Instrument :
 BNA_N
 ClientSampleID :
 GAJ63

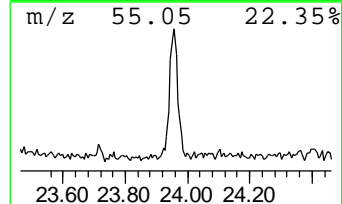
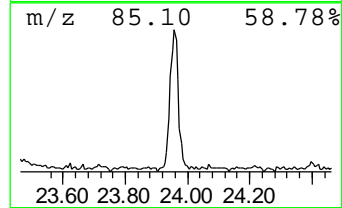
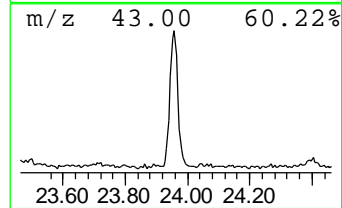
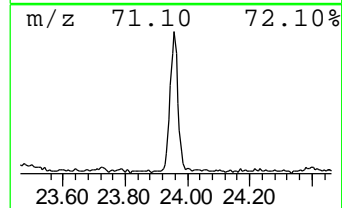
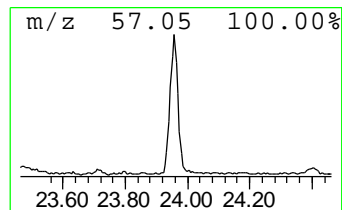
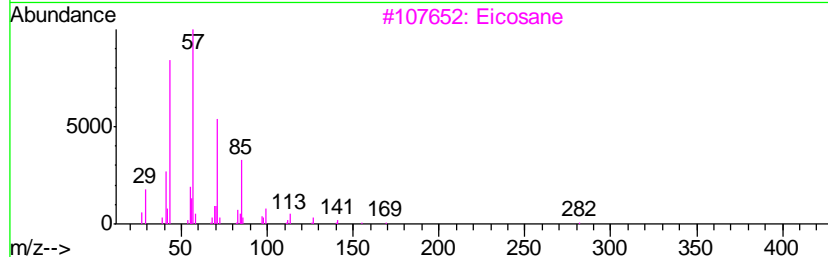
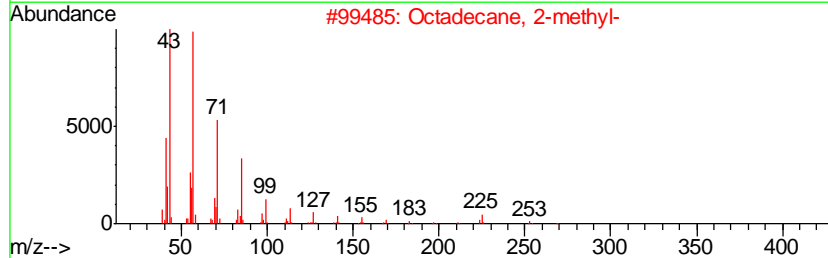
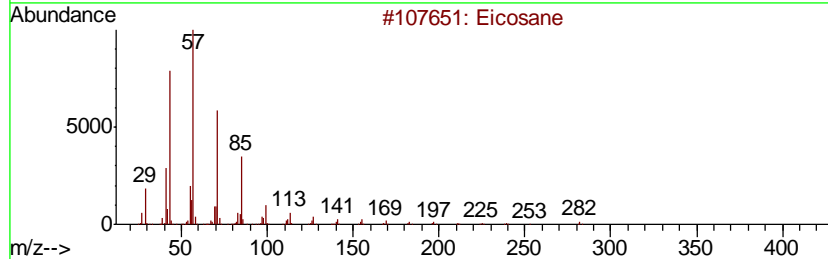
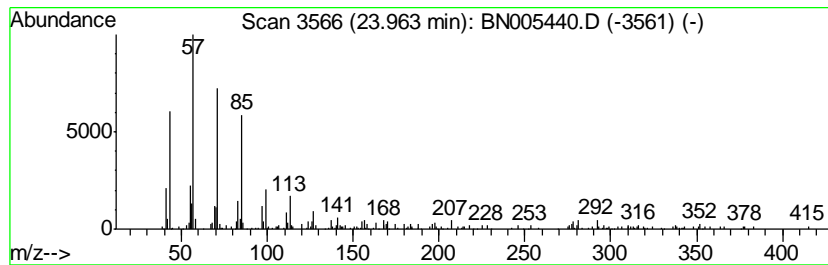
Quant Method : Z:\SVOASRV\HPCHEM1\BNA_N\METHODS\SOM-EPA-BN041919MA.M
 Quant Title : SVOA CALIBRATION

TIC Library : C:\DATABASE\NIST02.L
 TIC Integration Parameters: LSCINT.P

 Peak Number 9 (DEL) Alkane: Straight-Chai... Concentration Rank 8

R.T.	EstConc	Area	Relative to ISTD	R.T.
23.96	2.12 ng/ul	430273	Perylene-d12	23.41

Hit#	of	Tentative ID	MW	MolForm	CAS#	Qual
1	5	Eicosane	282	C20H42	000112-95-8	93
2		Octadecane, 2-methyl-	268	C19H40	001560-88-9	90
3		Eicosane	282	C20H42	000112-95-8	90
4		Heptacosane	380	C27H56	000593-49-7	89
5		Heptacosane	380	C27H56	000593-49-7	83



Data Path : Z:\SVOASRV\HPCHEM1\BNA_N\DATA\BN050219\
 Data File : BN005440.D
 Acq On : 03 May 2019 05:56
 Operator : JU/SJ
 Sample : K2603-11 10X
 Misc :
 ALS Vial : 25 Sample Multiplier: 1

Instrument :
 BNA_N
 ClientSampleId :
 GAJ63

Quant Method : Z:\SVOASRV\HPCHEM1\BNA_N\METHODS\SOM-EPA-BN041919MA.M
 Quant Title : SVOA CALIBRATION

TIC Library : C:\DATABASE\NIST02.L
 TIC Integration Parameters: LSCINT.P

TIC Top Hit name	RT	EstConc	Units	Response	--Internal Standard--			
					#	RT	Resp	Conc
(DEL) Alkane: Str...	14.15	2.5	ng/ul	483067	3	14.22	3898670	20.0
(DEL) Alkane: Str...	15.10	2.6	ng/ul	509960	3	14.22	3898670	20.0
(DEL) Alkane: Str...	15.97	2.6	ng/ul	595064	4	16.98	4616500	20.0
Cyclopenta(def)ph...	18.93	4.7	ng/ul	1085830	4	16.98	4616500	20.0
Fluoranthene, 2-m...	19.90	3.3	ng/ul	1073630	5	21.21	6507690	20.0
Pyrene, 1-methyl-	20.09	2.1	ng/ul	686539	5	21.21	6507690	20.0
Benzo[e]pyrene	23.22	6.7	ng/ul	1357580	6	23.41	4066040	20.0
(DEL) Alkane: Str...	23.96	2.1	ng/ul	430273	6	23.41	4066040	20.0