

Data Path : Z:\SVOASRV\HPCHEM1\BNA_N\DATA\BN050819\
 Data File : BN005536.D
 Acq On : 08 May 2019 17:05
 Operator : JU/SJ
 Sample : K2606-17
 Misc :
 ALS Vial : 9 Sample Multiplier: 1

Instrument :
 BNA_N
 ClientSampleId :
 A5149

Quant Time: May 08 17:38:31 2019
 Quant Method : Z:\SVOASRV\HPCHEM1\BNA_N\METHODS\SOM-EPA-BN041919MA.M
 Quant Title : SVOA CALIBRATION
 QLast Update : Tue May 07 05:36:07 2019
 Response via : Initial Calibration

Internal Standards	R.T.	QIon	Response	Conc	Units	Dev(Min)
1) 1,4-Dichlorobenzene-d4	7.59	152	327755	20.00	ng/ul	0.00
18) Naphthalene-d8	10.35	136	1420182	20.00	ng/ul	0.00
35) Acenaphthene-d10	14.22	164	917488	20.00	ng/ul	0.00
61) Phenanthrene-d10	16.98	188	2207459	20.00	ng/ul	0.00
77) Chrysene-d12	21.21	240	2082900	20.00	ng/ul	0.00
85) Perylene-d12	23.42	264	1958848	20.00	ng/ul	0.00

System Monitoring Compounds

3) 1,4-Dioxane-d8	3.21	96	33797	4.98	ng/uL	0.00
5) Phenol-d5	6.77	99	798844	31.03	ng/ul	0.00
7) Bis-(2-Chloroethyl)ether-d	6.93	67	464785	28.94	ng/ul	0.00
9) 2-Chlorophenol-d4	7.13	132	651214	33.06	ng/ul	0.00
13) 4-Methylphenol-d8	8.29	113	685994	34.09	ng/ul	0.00
19) Nitrobenzene-d5	8.73	128	365824	41.85	ng/ul	0.00
22) 2-Nitrophenol-d4	9.45	143	415610	46.90	ng/ul	0.00
26) 2,4-Dichlorophenol-d3	9.97	165	735355	36.20	ng/ul	0.00
29) 4-Chloroaniline-d4	10.49	131	1005384	47.99	ng/ul	0.00
43) Dimethylphthalate-d6	13.64	166	2580147	38.74	ng/ul	0.00
46) Acenaphthylene-d8	13.91	160	3191235	39.01	ng/ul	0.00
51) 4-Nitrophenol-d4	14.44	143	407294	38.73	ng/ul	0.00
57) Fluorene-d10	15.22	176	2265266	40.53	ng/ul	0.00
62) 4,6-Dinitro-2-methylphenol	15.36	200	332847	33.52	ng/ul	0.00
70) Anthracene-d10	17.08	188	3754374	40.57	ng/ul	0.00
78) Pyrene-d10	19.39	212	4176732	39.20	ng/ul	0.00
89) Benzo(a)pyrene-d12	23.28	264	3524203	41.17	ng/ul	0.00

Target Compounds

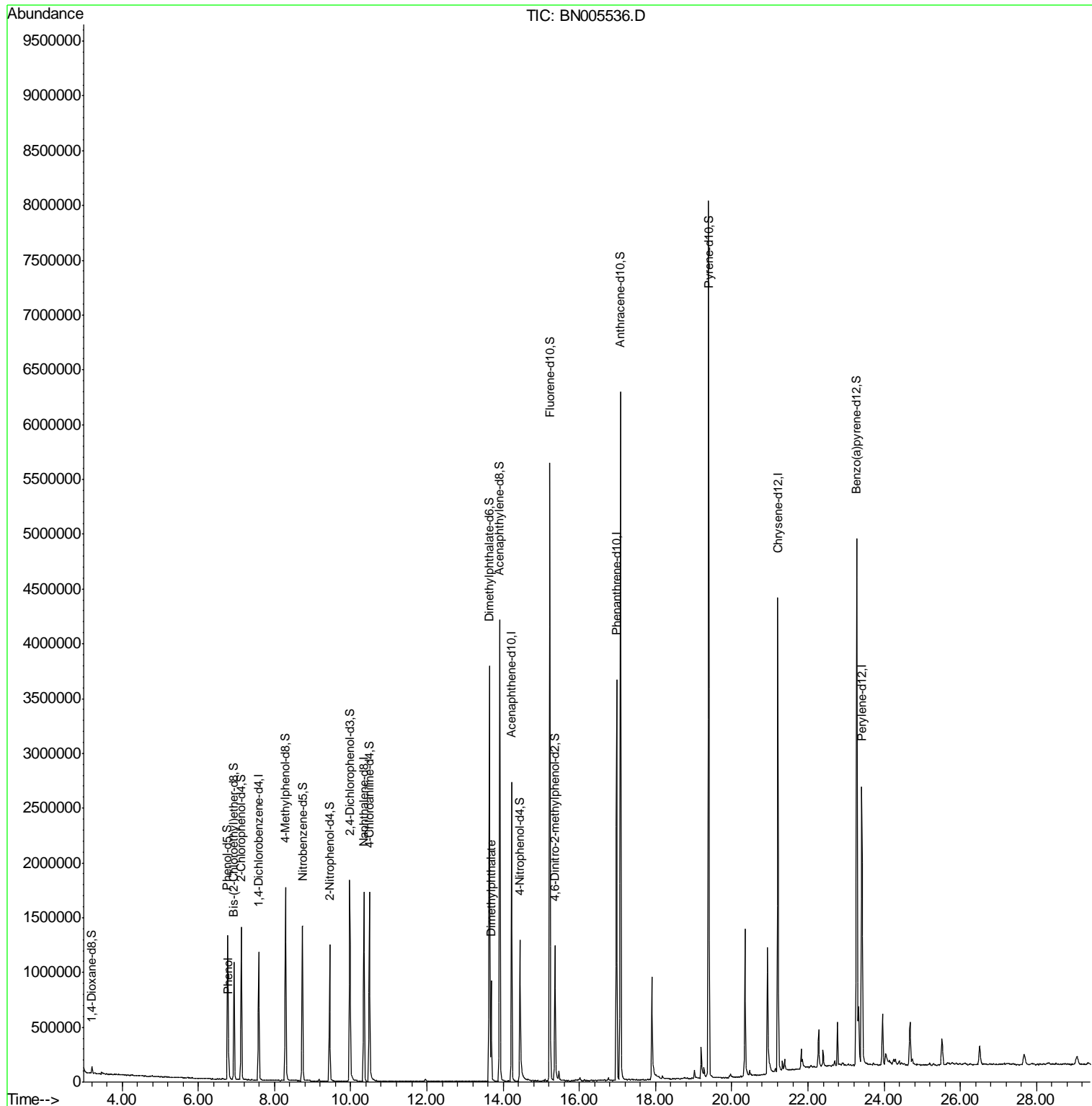
Target Compounds	R.T.	QIon	Response	Conc	Units	Ovalue
6) Phenol	6.80	94	68105	2.572	ng/ul	97
44) Dimethylphthalate	13.69	163	592688	8.931	ng/ul	99

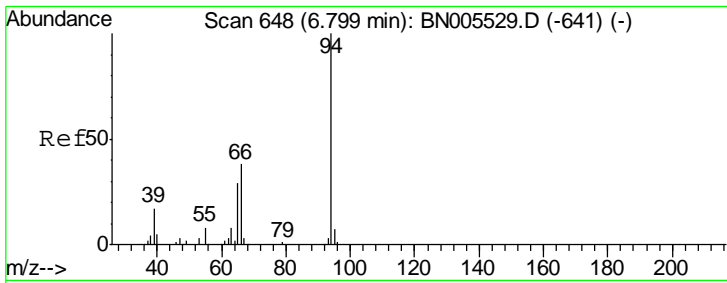
(#) = qualifier out of range (m) = manual integration (+) = signals summed

Data Path : Z:\SVOASRV\HPCHEM1\BNA N\DATA\BN050819\
 Data File : BN005536.D
 Acq On : 08 May 2019 17:05
 Operator : JU/SJ
 Sample : K2606-17
 Misc :
 ALS Vial : 9 Sample Multiplier: 1

Instrument :
 BNA_N
 ClientSampleId :
 A5149

Quant Time: May 08 17:38:31 2019
 Quant Method : Z:\SVOASRV\HPCHEM1\BNA_N\METHODS\SOM-EPA-BN041919MA.M
 Quant Title : SVOA CALIBRATION
 QLast Update : Tue May 07 05:36:07 2019
 Response via : Initial Calibration

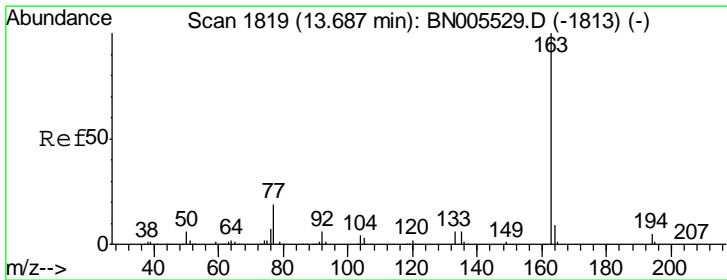
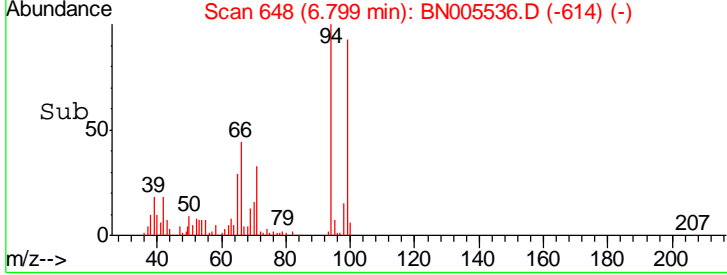
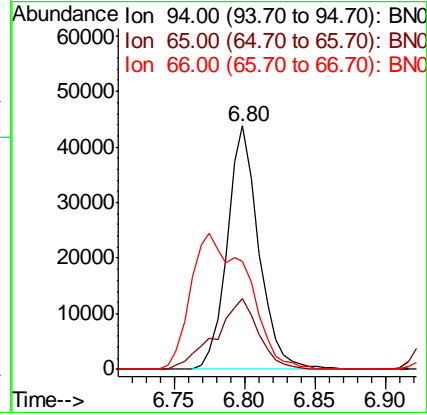
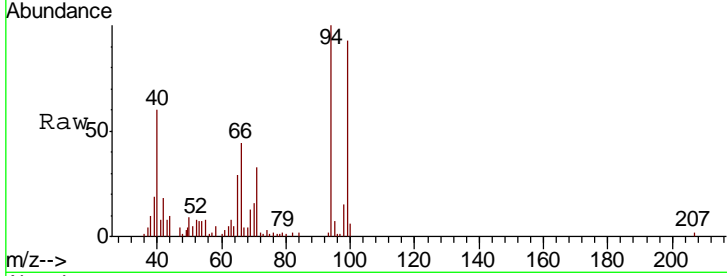




#6
 Phenol
 Concen: 2.572 ng/ul
 RT: 6.80 min Scan# 648
 Delta R.T. -0.00 min
 Lab File: BN005536.D
 Acq: 08 May 2019 17:05

Instrument :
 BNA_N
 ClientSampled :
 A5149

Tgt Ion	Resp	Lower	Upper
94	68105		
65	29.1	24.2	36.4
66	44.4	33.8	50.6



#44
 Dimethylphthalate
 Concen: 8.931 ng/ul
 RT: 13.69 min Scan# 1819
 Delta R.T. -0.00 min
 Lab File: BN005536.D
 Acq: 08 May 2019 17:05

Tgt Ion	Resp	Lower	Upper
163	592688		
194	4.5	3.4	5.0
164	10.3	8.1	12.1

