

Data Path : Z:\SVOASRV\HPCHEM1\BNA_N\DATA\BN050819\
 Data File : BN005532.D
 Acq On : 08 May 2019 14:46
 Operator : JU/SJ
 Sample : K2606-06
 Misc :
 ALS Vial : 5 Sample Multiplier: 1

Instrument :
 BNA_N
 ClientSampleId :
 A5140

Integration Parameters: LSCINT.P

Integrator: RTE
 Smoothing : OFF
 Sampling : 1
 Start Thrs: 0.2
 Stop Thrs : 0

Filtering: 5
 Min Area: 0.1 % of largest Peak
 Max Peaks: 100
 Peak Location: TOP

If leading or trailing edge < 100 prefer < Baseline drop else tangent >
 Peak separation: 5

Method : Z:\SVOASRV\HPCHEM1\BNA_N\METHODS\SOM-EPA-BN041919MA.M
 Title : SVOA CALIBRATION

Signal : TIC

peak #	R.T. min	first scan	max scan	last scan	PK TY	peak height	corr. area	corr. % max.	% of total
1	3.211	34	38	45	rBV	60516	83472	0.99%	0.094%
2	3.458	78	80	90	rVB	22688	42268	0.50%	0.047%
3	5.711	461	463	472	rBV4	6646	13275	0.16%	0.015%
4	6.769	637	643	655	rBV	1136549	1971593	23.37%	2.212%
5	6.934	665	671	684	rVB	931135	1462271	17.33%	1.640%
6	7.128	696	704	716	rBV	1206667	1974109	23.40%	2.215%
7	7.587	775	782	791	rBV	887714	1457528	17.27%	1.635%
8	8.287	894	901	917	rBV	1521909	2549094	30.21%	2.860%
9	8.728	968	976	988	rBV	1235964	2072646	24.56%	2.325%
10	8.905	1002	1006	1011	rVB3	7465	14132	0.17%	0.016%
11	9.163	1044	1050	1054	rBV2	12732	18218	0.22%	0.020%
12	9.446	1090	1098	1108	rBV	1012871	1771954	21.00%	1.988%
13	9.975	1181	1188	1210	rBV	1538937	2743168	32.51%	3.077%
14	10.346	1244	1251	1259	rBV	1330388	2200091	26.07%	2.468%
15	10.487	1264	1275	1295	rBV	1392922	2730943	32.36%	3.064%
16	11.963	1519	1526	1533	rBV3	18367	41145	0.49%	0.046%
17	12.569	1623	1629	1638	rVB5	6303	12078	0.14%	0.014%
18	12.828	1667	1673	1678	rVB5	11342	16425	0.19%	0.018%
19	13.193	1729	1735	1737	rBV3	5909	8801	0.10%	0.010%
20	13.640	1804	1811	1815	rBV	3029421	4303247	51.00%	4.827%
21	13.687	1815	1819	1829	rVB	811493	1176387	13.94%	1.320%
22	13.910	1850	1857	1873	rBV	3520507	5367953	63.62%	6.022%
23	14.222	1903	1910	1925	rBV2	2116770	3167231	37.53%	3.553%
24	14.440	1941	1947	1964	rBV	926655	1968798	23.33%	2.209%
25	14.669	1983	1986	1990	rVB3	7734	9547	0.11%	0.011%
26	15.045	2044	2050	2052	rBV	14361	19873	0.24%	0.022%
27	15.098	2055	2059	2062	rVB3	14401	17276	0.20%	0.019%
28	15.222	2073	2080	2095	rBV	4491252	6535499	77.45%	7.332%
29	15.363	2098	2104	2113	rVV	1058930	1698591	20.13%	1.906%
30	15.463	2117	2121	2127	rVB2	57021	85359	1.01%	0.096%
31	15.610	2141	2146	2149	rVB6	7333	10505	0.12%	0.012%
32	15.798	2173	2178	2180	rBV4	5523	9094	0.11%	0.010%
33	15.916	2194	2198	2202	rBV5	7861	11089	0.13%	0.012%
34	15.963	2202	2206	2209	rVV4	15117	18337	0.22%	0.021%

Data Path : Z:\SVOASRV\HPCHEM1\BNA_N\DATA\BN050819\
 Data File : BN005532.D
 Acq On : 08 May 2019 14:46
 Operator : JU/SJ
 Sample : K2606-06
 Misc :
 ALS Vial : 5 Sample Multiplier: 1

Instrument :
 BNA_N
 ClientSampleId :
 A5140

Integration Parameters: LSCINT.P

Integrator: RTE
 Smoothing : OFF
 Sampling : 1
 Start Thrs: 0.2
 Stop Thrs : 0

Filtering: 5
 Min Area: 0.1 % of largest Peak
 Max Peaks: 100
 Peak Location: TOP

If leading or trailing edge < 100 prefer < Baseline drop else tangent >
 Peak separation: 5

Method : Z:\SVOASRV\HPCHEM1\BNA_N\METHODS\SOM-EPA-BN041919MA.M
 Title : SVOA CALIBRATION

35	16.016	2209	2215	2219	rVB6	24610	41824	0.50%	0.047%
36	16.139	2231	2236	2240	rBV4	15302	21032	0.25%	0.024%
37	16.228	2248	2251	2258	rBV5	4652	9027	0.11%	0.010%
38	16.316	2262	2266	2271	rVV6	5701	12135	0.14%	0.014%
39	16.763	2338	2342	2347	rBV3	21139	32223	0.38%	0.036%
40	16.916	2362	2368	2372	rBV8	5543	10549	0.13%	0.012%
41	16.975	2372	2378	2389	rBV	2732430	4016567	47.60%	4.506%
42	17.081	2389	2396	2410	rVV	4871883	7299023	86.50%	8.188%
43	17.286	2428	2431	2433	rBV3	9168	9581	0.11%	0.011%
44	17.498	2463	2467	2471	rBV7	9903	12935	0.15%	0.015%
45	17.898	2530	2535	2550	rBV2	467076	883478	10.47%	0.991%
46	18.198	2581	2586	2589	rBV6	16020	23518	0.28%	0.026%
47	18.839	2692	2695	2700	rVB5	16928	18844	0.22%	0.021%
48	18.951	2712	2714	2720	rBV6	7848	10887	0.13%	0.012%
49	19.022	2720	2726	2730	rBV	58902	90456	1.07%	0.101%
50	19.198	2751	2756	2766	rBV3	173022	339175	4.02%	0.380%
51	19.280	2766	2770	2776	rVB	64029	101661	1.20%	0.114%
52	19.392	2783	2789	2799	rVV	5910389	8438150	100.00%	9.466%
53	19.463	2799	2801	2806	rVB5	30242	34043	0.40%	0.038%
54	19.969	2884	2887	2891	rVB	44894	50336	0.60%	0.056%
55	20.351	2944	2952	2963	rBV	647343	971366	11.51%	1.090%
56	20.474	2968	2973	2976	rVB2	92990	111891	1.33%	0.126%
57	20.945	3048	3053	3062	rBV	413086	735874	8.72%	0.826%
58	21.145	3084	3087	3091	rVB3	25231	26605	0.32%	0.030%
59	21.210	3093	3098	3109	rBV	2916976	4113549	48.75%	4.615%
60	21.339	3117	3120	3124	rVB4	40493	44934	0.53%	0.050%
61	21.392	3125	3129	3133	rBV	215695	231567	2.74%	0.260%
62	21.827	3198	3203	3207	rBV	318859	401874	4.76%	0.451%
63	22.286	3276	3281	3287	rVB	514905	683362	8.10%	0.767%
64	22.410	3298	3302	3305	rVB	75546	92134	1.09%	0.103%
65	22.780	3360	3365	3372	rVB	616320	846791	10.04%	0.950%
66	23.286	3443	3451	3456	rBV2	3295892	6161815	73.02%	6.912%
67	23.333	3456	3459	3467	rVV	729792	1190428	14.11%	1.335%
68	23.421	3467	3474	3487	rVB	1682063	3304174	39.16%	3.707%
69	23.963	3560	3566	3573	rBV	558974	1062570	12.59%	1.192%
70	24.686	3683	3689	3698	rVB	442105	930527	11.03%	1.044%
71	25.533	3827	3833	3844	rVB2	257087	662791	7.85%	0.744%

Data Path : Z:\SVOASRV\HPCHEM1\BNA N\DATA\BN050819\
Data File : BN005532.D
Acq On : 08 May 2019 14:46
Operator : JU/SJ
Sample : K2606-06
Misc :
ALS Vial : 5 Sample Multiplier: 1

Instrument :
BNA_N
ClientSampleId :
A5140

Integration Parameters: LSCINT.P
Integrator: RTE
Smoothing : OFF Filtering: 5
Sampling : 1 Min Area: 0.1 % of largest Peak
Start Thrs: 0.2 Max Peaks: 100
Stop Thrs : 0 Peak Location: TOP

If leading or trailing edge < 100 prefer < Baseline drop else tangent >
Peak separation: 5

Method : Z:\SVOASRV\HPCHEM1\BNA_N\METHODS\SOM-EPA-BN041919MA.M
Title : SVOA CALIBRATION

72	26.521	3994	4001	4011	rVB2	189778	531570	6.30%	0.596%
----	--------	------	------	------	------	--------	--------	-------	--------

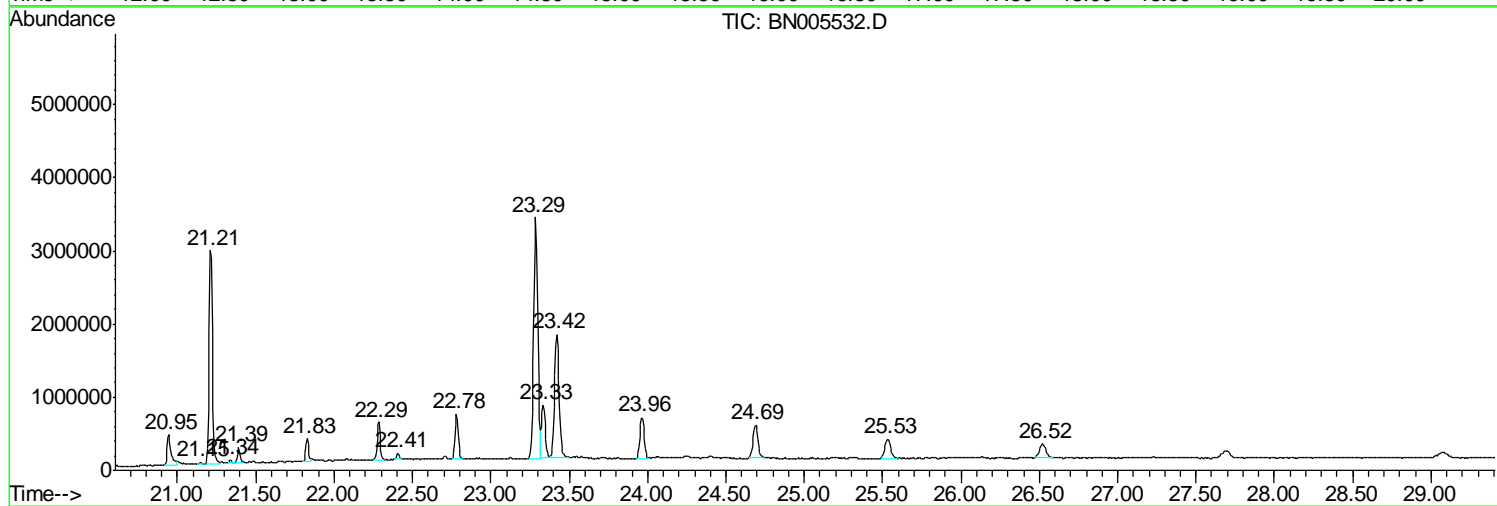
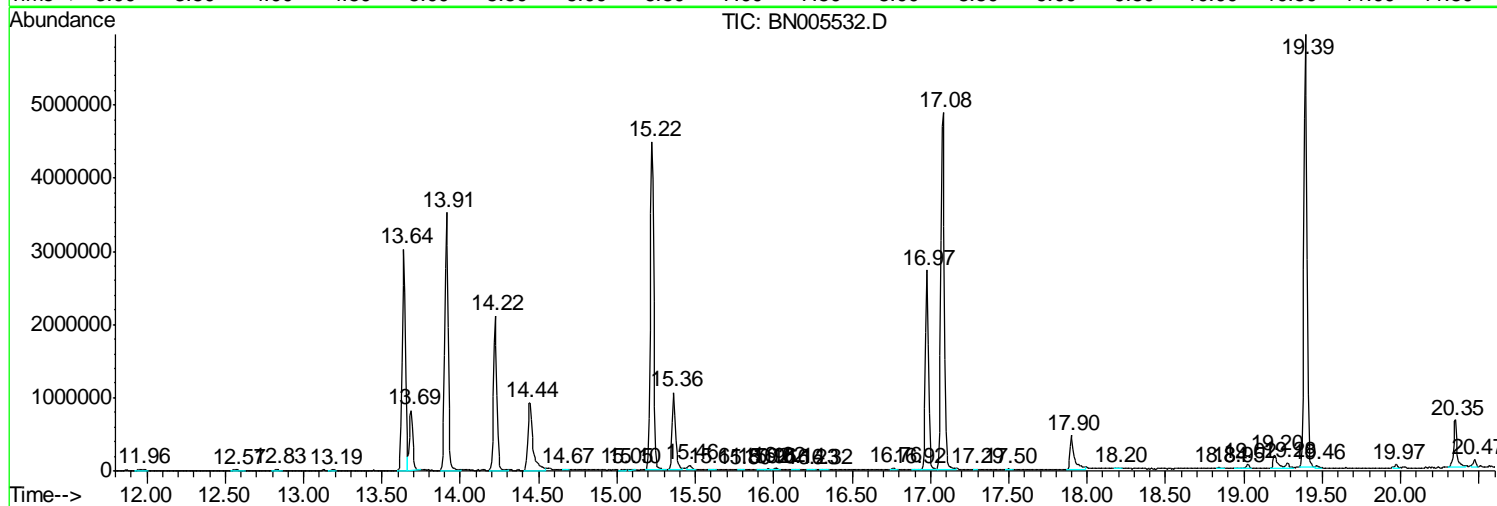
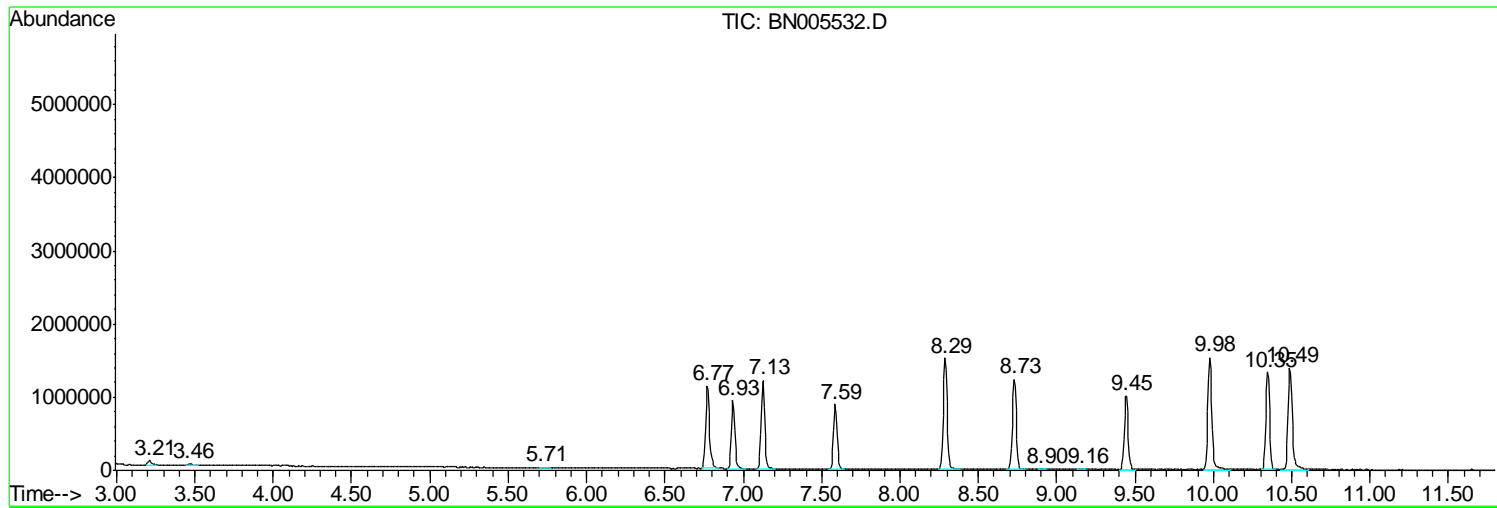
Sum of corrected areas: 89141263

Data Path : Z:\SVOASRV\HPCHEM1\BNA N\DATA\BN050819\
 Data File : BN005532.D
 Acq On : 08 May 2019 14:46
 Operator : JU/SJ
 Sample : K2606-06
 Misc :
 ALS Vial : 5 Sample Multiplier: 1

Instrument :
 BNA_N
 ClientSampleId :
 A5140

Quant Method : Z:\SVOASRV\HPCHEM1\BNA_N\METHODS\SOM-EPA-BN041919MA.M
 Quant Title : SVOA CALIBRATION

TIC Library : C:\DATABASE\NIST02.L
 TIC Integration Parameters: LSCINT.P



Data Path : Z:\SVOASRV\HPCHEM1\BNA N\DATA\BN050819\
 Data File : BN005532.D
 Acq On : 08 May 2019 14:46
 Operator : JU/SJ
 Sample : K2606-06
 Misc :
 ALS Vial : 5 Sample Multiplier: 1

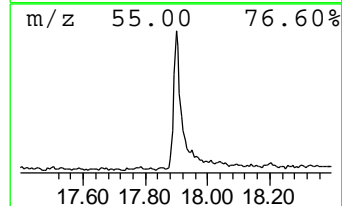
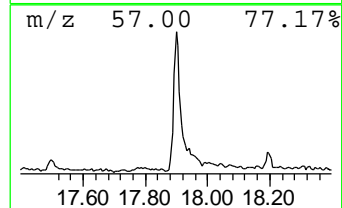
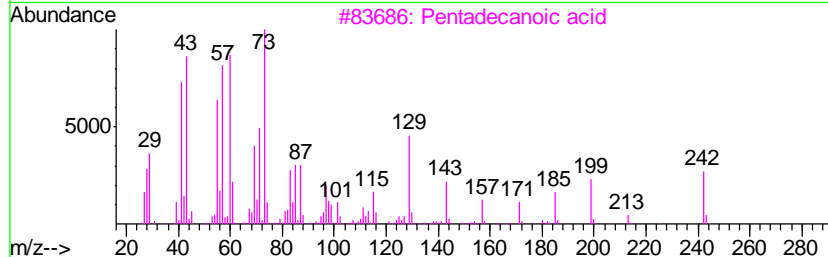
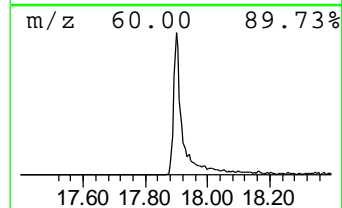
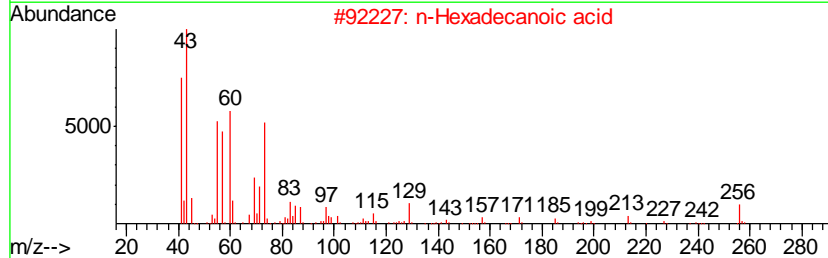
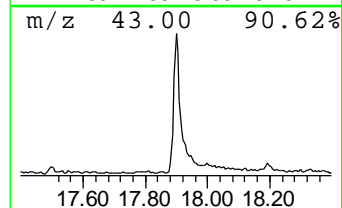
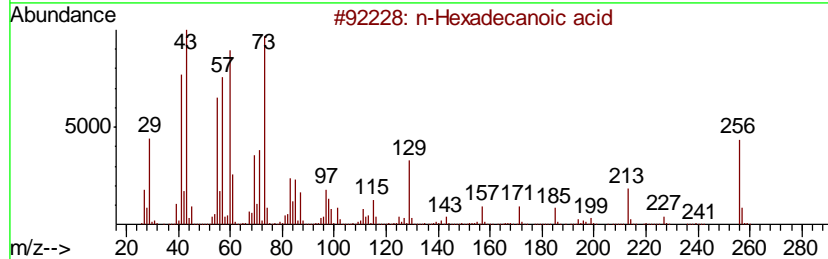
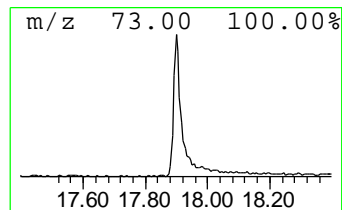
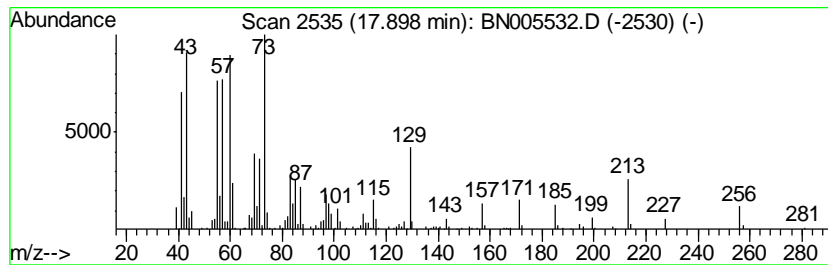
Instrument :
 BNA_N
 ClientSampleID :
 A5140

Quant Method : Z:\SVOASRV\HPCHEM1\BNA_N\METHODS\SOM-EPA-BN041919MA.M
 Quant Title : SVOA CALIBRATION

TIC Library : C:\DATABASE\NIST02.L
 TIC Integration Parameters: LSCINT.P

 Peak Number 1 n-Hexadecanoic acid Concentration Rank 5

R.T.	EstConc	Area	Relative to ISTD	R.T.		
17.90	4.40 ng/ul	883478	Phenanthrene-d10	16.97		
Hit# of	5	Tentative ID	MW	MolForm	CAS#	Qual
1		n-Hexadecanoic acid	256	C16H32O2	000057-10-3	98
2		n-Hexadecanoic acid	256	C16H32O2	000057-10-3	92
3		Pentadecanoic acid	242	C15H30O2	001002-84-2	83
4		Tetradecanoic acid	228	C14H28O2	000544-63-8	80
5		Tridecanoic acid	214	C13H26O2	000638-53-9	76



Data Path : Z:\SVOASRV\HPCHEM1\BNA N\DATA\BN050819\
 Data File : BN005532.D
 Acq On : 08 May 2019 14:46
 Operator : JU/SJ
 Sample : K2606-06
 Misc :
 ALS Vial : 5 Sample Multiplier: 1

Instrument :
 BNA_N
 ClientSampleID :
 A5140

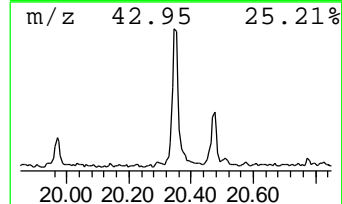
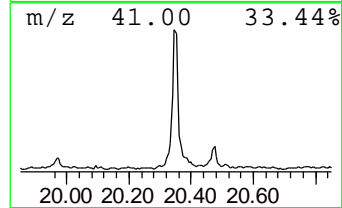
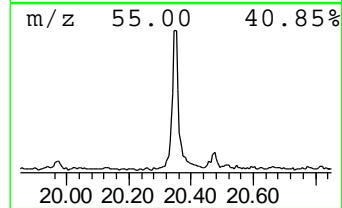
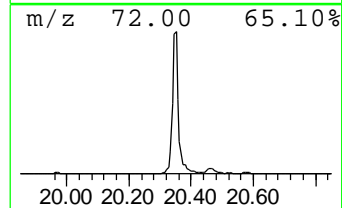
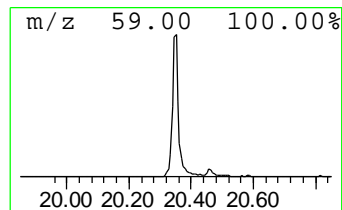
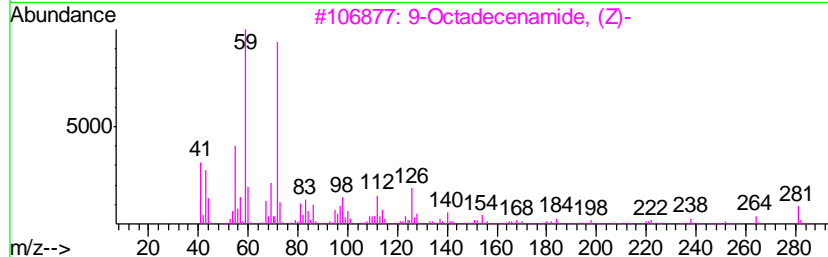
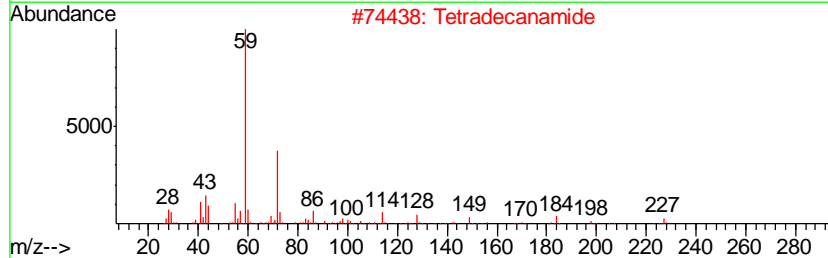
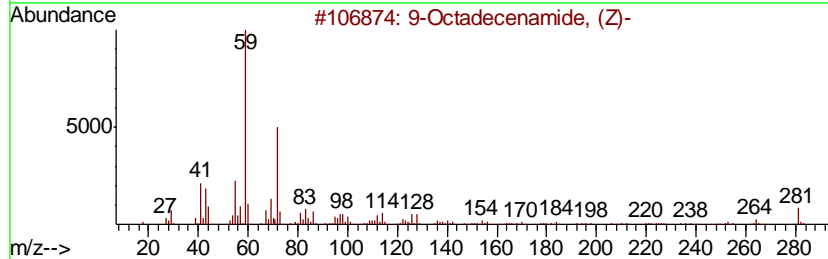
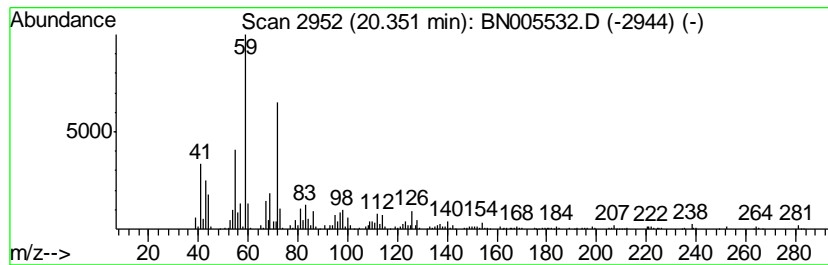
Quant Method : Z:\SVOASRV\HPCHEM1\BNA_N\METHODS\SOM-EPA-BN041919MA.M
 Quant Title : SVOA CALIBRATION

TIC Library : C:\DATABASE\NIST02.L
 TIC Integration Parameters: LSCINT.P

 Peak Number 2 9-Octadecenamide, (Z)- Concentration Rank 4

R.T.	EstConc	Area	Relative to ISTD	R.T.
20.35	4.72 ng/ul	971366	Chrysene-d12	21.21

Hit#	of	Tentative ID	MW	MolForm	CAS#	Qual
1	5	9-Octadecenamide, (Z)-	281	C18H35NO	000301-02-0	94
2		Tetradecanamide	227	C14H29NO	000638-58-4	64
3		9-Octadecenamide, (Z)-	281	C18H35NO	000301-02-0	62
4		Octanamide	143	C8H17NO	000629-01-6	59
5		9-Octadecenamide, (Z)-	281	C18H35NO	000301-02-0	50



Data Path : Z:\SVOASRV\HPCHEM1\BNA N\DATA\BN050819\
 Data File : BN005532.D
 Acq On : 08 May 2019 14:46
 Operator : JU/SJ
 Sample : K2606-06
 Misc :
 ALS Vial : 5 Sample Multiplier: 1

Instrument :
 BNA_N
 ClientSampled :
 A5140

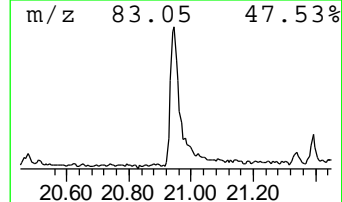
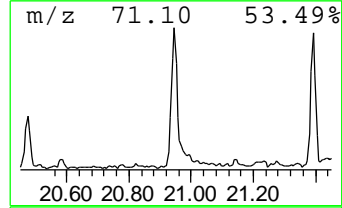
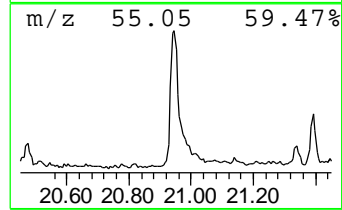
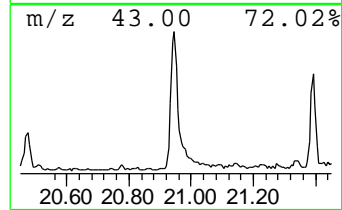
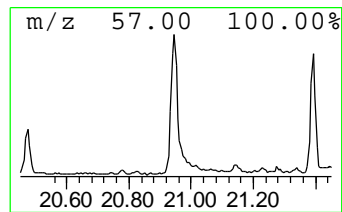
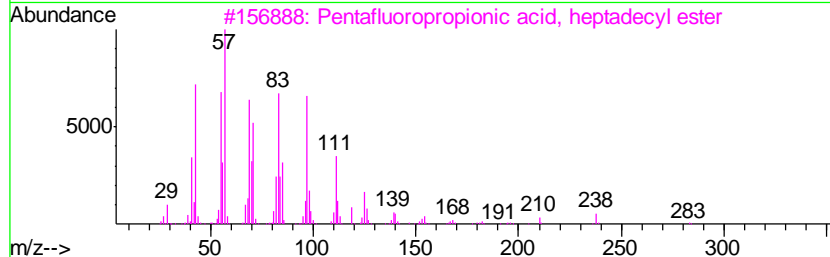
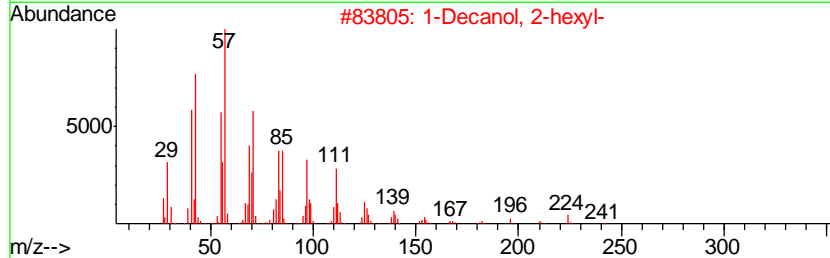
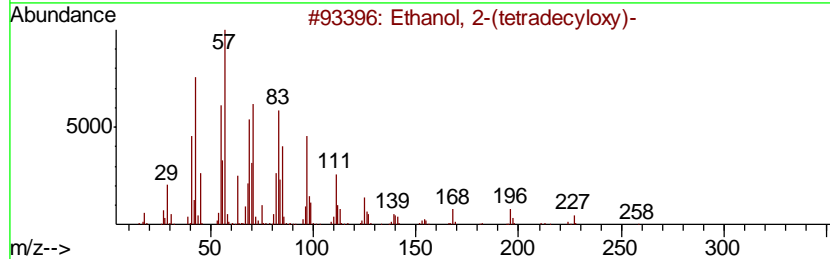
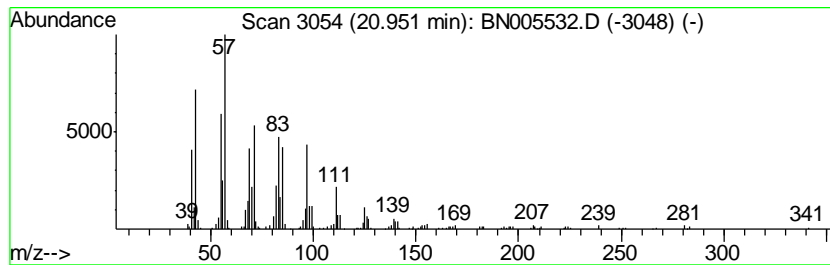
Quant Method : Z:\SVOASRV\HPCHEM1\BNA_N\METHODS\SOM-EPA-BN041919MA.M
 Quant Title : SVOA CALIBRATION

TIC Library : C:\DATABASE\NIST02.L
 TIC Integration Parameters: LSCINT.P

 Peak Number 3 Ethanol, 2-(tetradecyloxy)- Concentration Rank 7

R.T.	EstConc	Area	Relative to ISTD	R.T.
20.95	3.58 ng/ul	735874	Chrysene-d12	21.21

Hit#	of	Tentative ID	MW	MolForm	CAS#	Qual
1	5	Ethanol, 2-(tetradecyloxy)-	258	C16H34O2	002136-70-1	90
2		1-Decanol, 2-hexyl-	242	C16H34O	002425-77-6	74
3		Pentafluoropropionic acid, hepta...	402	C20H35F5O2	1000283-04-2	74
4		Heptafluorobutyric acid, n-octad...	466	C22H37F7O2	000400-57-7	72
5		1-Docosene	308	C22H44	001599-67-3	68



Data Path : Z:\SVOASRV\HPCHEM1\BNA N\DATA\BN050819\
 Data File : BN005532.D
 Acq On : 08 May 2019 14:46
 Operator : JU/SJ
 Sample : K2606-06
 Misc :
 ALS Vial : 5 Sample Multiplier: 1

Instrument :
 BNA_N
 ClientSampled :
 A5140

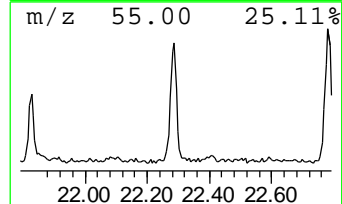
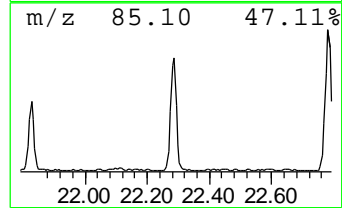
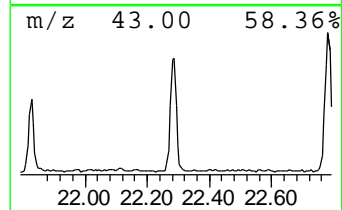
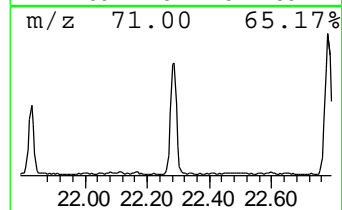
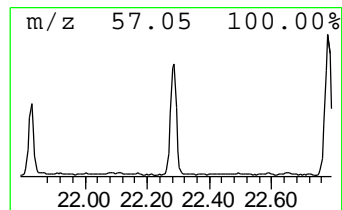
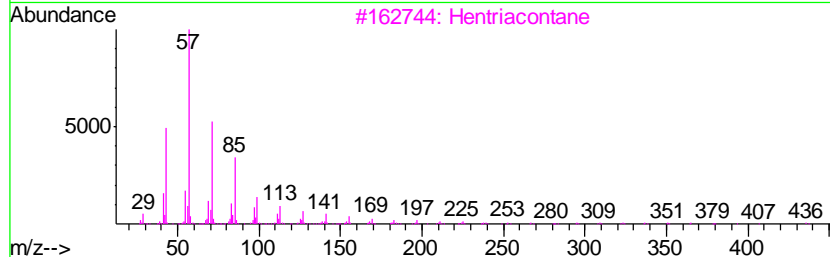
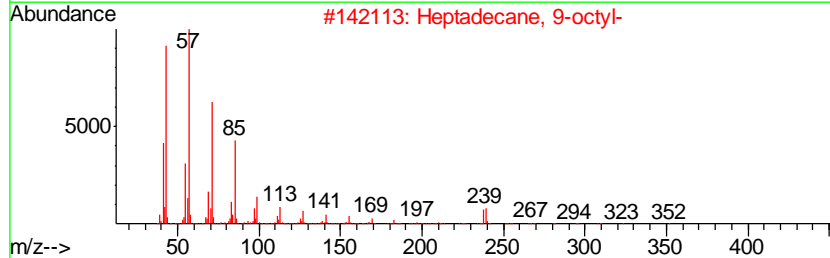
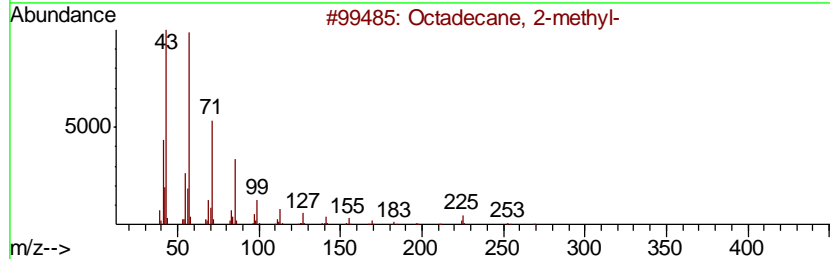
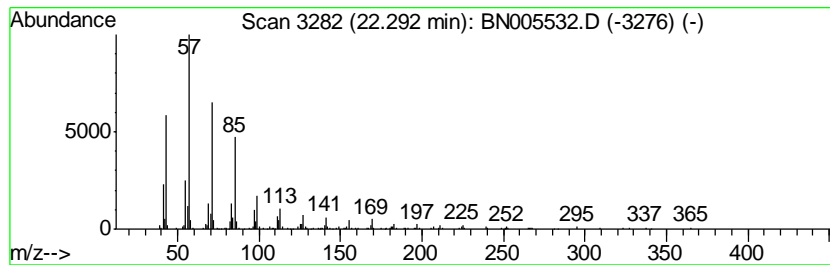
Quant Method : Z:\SVOASRV\HPCHEM1\BNA_N\METHODS\SOM-EPA-BN041919MA.M
 Quant Title : SVOA CALIBRATION

TIC Library : C:\DATABASE\NIST02.L
 TIC Integration Parameters: LSCINT.P

 Peak Number 4 (DEL) Alkane: Straight-Chai... Concentration Rank 8

R.T.	EstConc	Area	Relative to ISTD	R.T.
22.29	3.32 ng/ul	683362	Chrysene-d12	21.21

Hit#	of	Tentative ID	MW	MolForm	CAS#	Qual
1	5	Octadecane, 2-methyl-	268	C19H40	001560-88-9	94
2		Heptadecane, 9-octyl-	352	C25H52	007225-64-1	91
3		Hentriacontane	437	C31H64	000630-04-6	91
4		Octacosane	394	C28H58	000630-02-4	91
5		triacontane	422	C30H62	000638-68-6	91



Data Path : Z:\SVOASRV\HPCHEM1\BNA N\DATA\BN050819\
 Data File : BN005532.D
 Acq On : 08 May 2019 14:46
 Operator : JU/SJ
 Sample : K2606-06
 Misc :
 ALS Vial : 5 Sample Multiplier: 1

Instrument :
 BNA_N
 ClientSampled :
 A5140

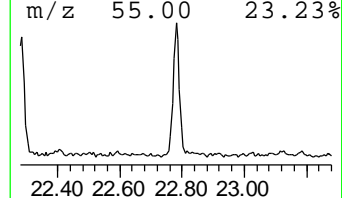
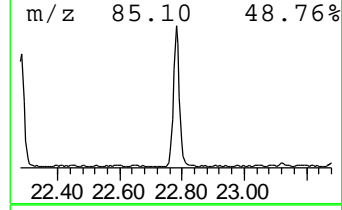
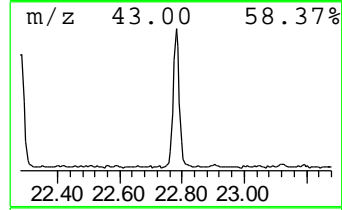
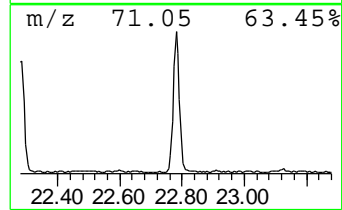
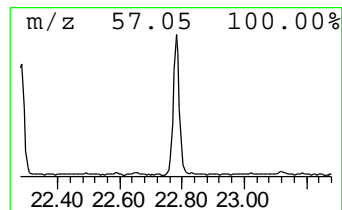
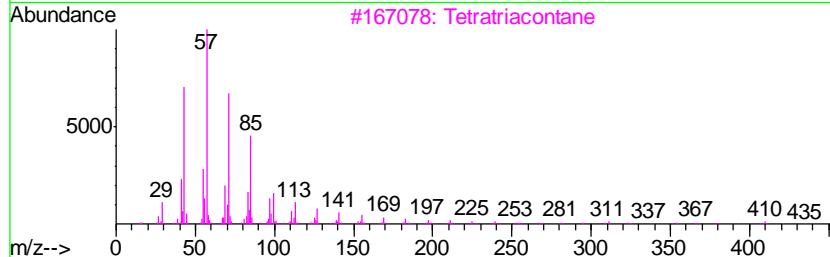
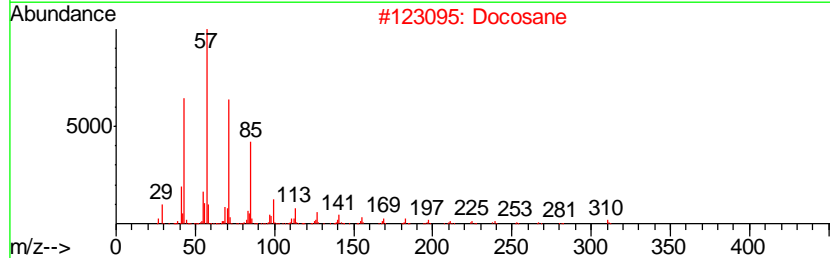
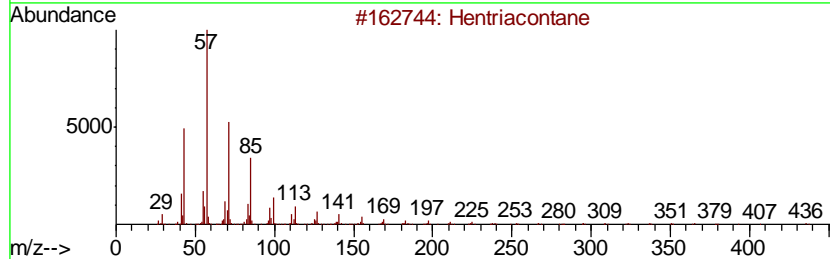
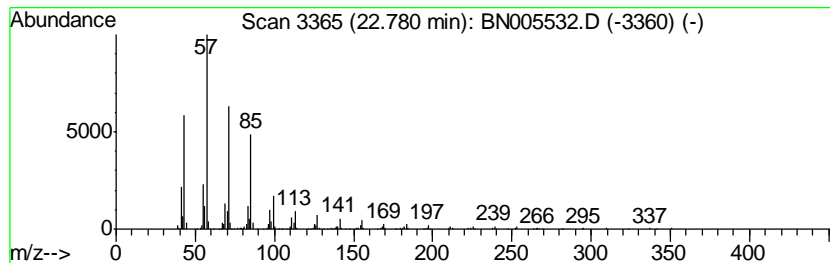
Quant Method : Z:\SVOASRV\HPCHEM1\BNA_N\METHODS\SOM-EPA-BN041919MA.M
 Quant Title : SVOA CALIBRATION

TIC Library : C:\DATABASE\NIST02.L
 TIC Integration Parameters: LSCINT.P

 Peak Number 5 (DEL) Alkane: Straight-Chai... Concentration Rank 3

R.T.	EstConc	Area	Relative to ISTD	R.T.
22.78	5.13 ng/ul	846791	Perylene-d12	23.42

Hit#	of	Tentative ID	MW	MolForm	CAS#	Qual
1	5	Hentriacontane	437	C31H64	000630-04-6	91
2		Docosane	310	C22H46	000629-97-0	91
3		Tetratriacontane	479	C34H70	014167-59-0	91
4		Nonacosane	408	C29H60	000630-03-5	91
5		Heneicosane	296	C21H44	000629-94-7	91



Data Path : Z:\SVOASRV\HPCHEM1\BNA N\DATA\BN050819\
 Data File : BN005532.D
 Acq On : 08 May 2019 14:46
 Operator : JU/SJ
 Sample : K2606-06
 Misc :
 ALS Vial : 5 Sample Multiplier: 1

Instrument :
 BNA_N
 ClientSampled :
 A5140

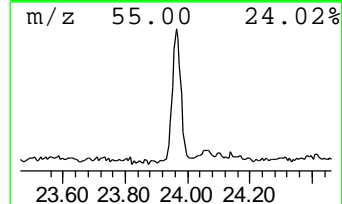
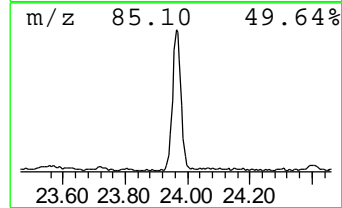
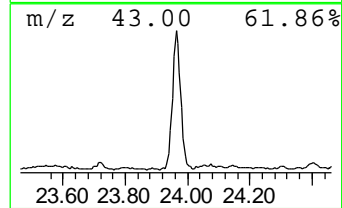
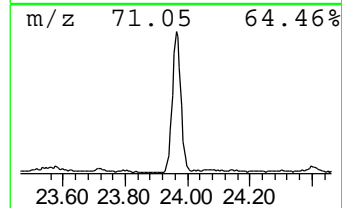
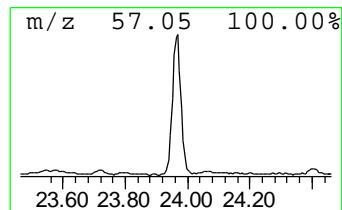
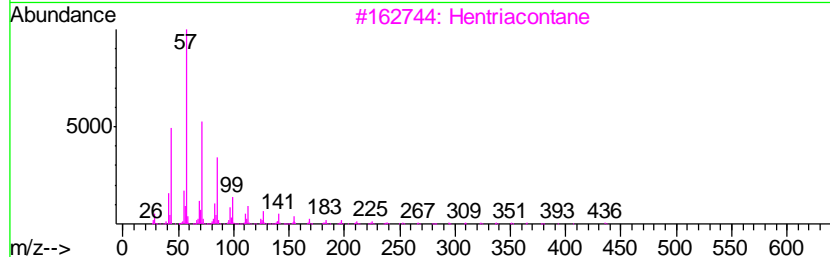
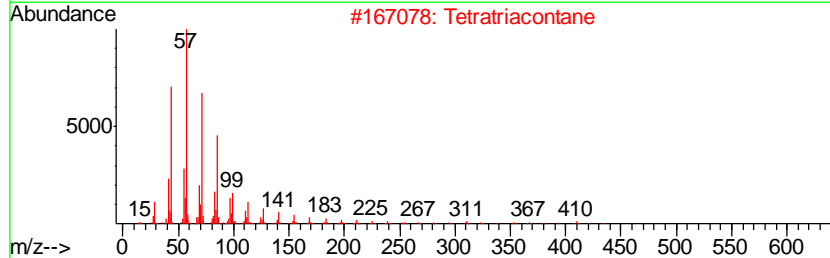
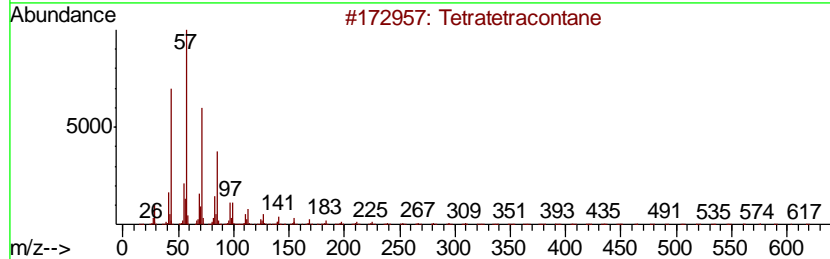
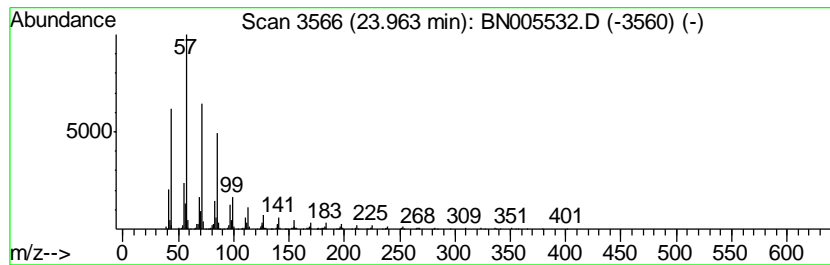
Quant Method : Z:\SVOASRV\HPCHEM1\BNA_N\METHODS\SOM-EPA-BN041919MA.M
 Quant Title : SVOA CALIBRATION

TIC Library : C:\DATABASE\NIST02.L
 TIC Integration Parameters: LSCINT.P

 Peak Number 6 (DEL) Alkane: Straight-Chai... Concentration Rank 1

R.T.	EstConc	Area	Relative to ISTD	R.T.
23.96	6.43 ng/ul	1062570	Perylene-d12	23.42

Hit#	of	Tentative ID	MW	MolForm	CAS#	Qual
1	5	Tetratetracontane	619	C44H90	007098-22-8	95
2		Tetratriacontane	479	C34H70	014167-59-0	94
3		Hentriacontane	437	C31H64	000630-04-6	91
4		Triacontane	422	C30H62	000638-68-6	91
5		Nonacosane	408	C29H60	000630-03-5	90



Data Path : Z:\SVOASRV\HPCHEM1\BNA N\DATA\BN050819\
 Data File : BN005532.D
 Acq On : 08 May 2019 14:46
 Operator : JU/SJ
 Sample : K2606-06
 Misc :
 ALS Vial : 5 Sample Multiplier: 1

Instrument :
 BNA_N
 ClientSampleID :
 A5140

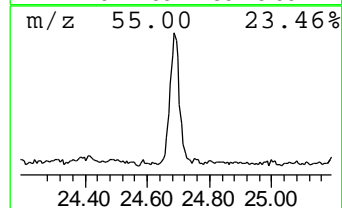
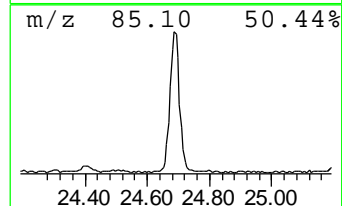
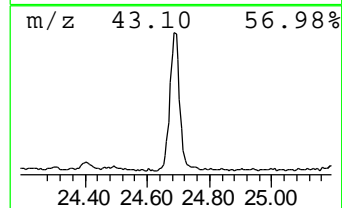
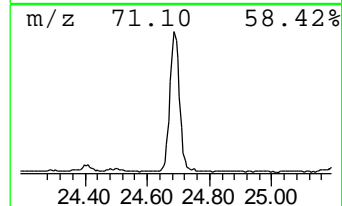
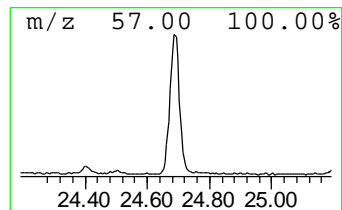
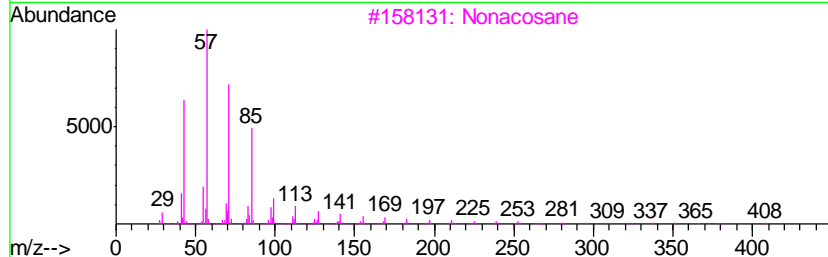
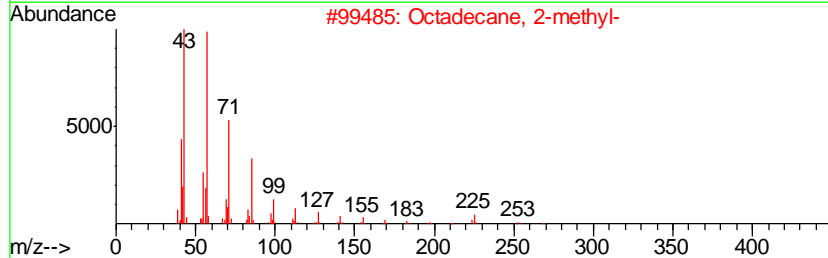
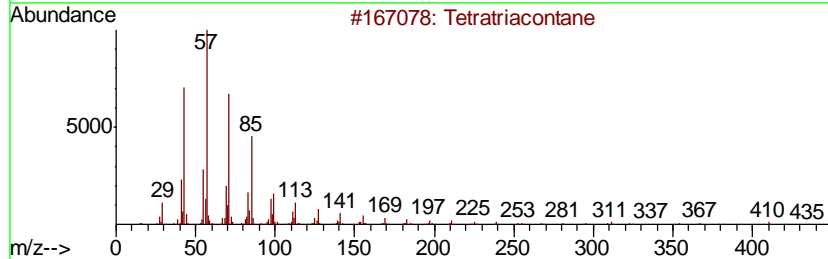
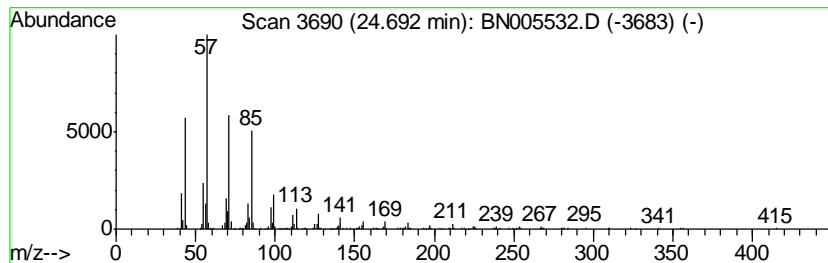
Quant Method : Z:\SVOASRV\HPCHEM1\BNA_N\METHODS\SOM-EPA-BN041919MA.M
 Quant Title : SVOA CALIBRATION

TIC Library : C:\DATABASE\NIST02.L
 TIC Integration Parameters: LSCINT.P

 Peak Number 7 (DEL) Alkane: Straight-Chai... Concentration Rank 2

R.T.	EstConc	Area	Relative to ISTD	R.T.
24.69	5.63 ng/ul	930527	Perylene-d12	23.42

Hit#	of	Tentative ID	MW	MolForm	CAS#	Qual
1	5	Tetratriacontane	479	C34H70	014167-59-0	94
2		Octadecane, 2-methyl-	268	C19H40	001560-88-9	93
3		Nonacosane	408	C29H60	000630-03-5	91
4		Triacontane	422	C30H62	000638-68-6	91
5		Heptadecane, 9-octyl-	352	C25H52	007225-64-1	91



Data Path : Z:\SVOASRV\HPCHEM1\BNA N\DATA\BN050819\
 Data File : BN005532.D
 Acq On : 08 May 2019 14:46
 Operator : JU/SJ
 Sample : K2606-06
 Misc :
 ALS Vial : 5 Sample Multiplier: 1

Instrument :
 BNA_N
 ClientSampled :
 A5140

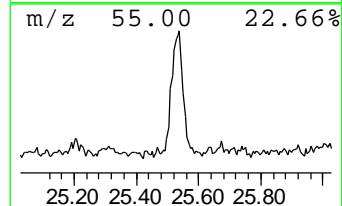
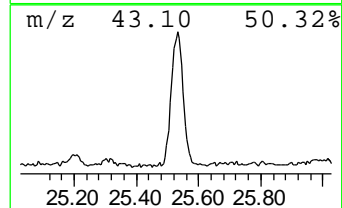
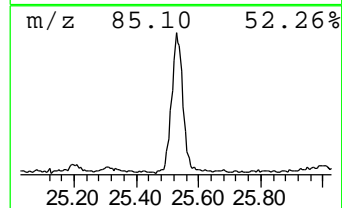
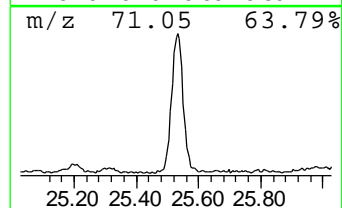
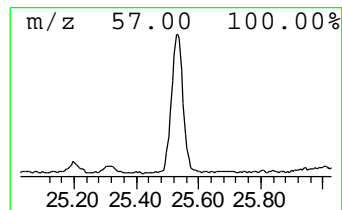
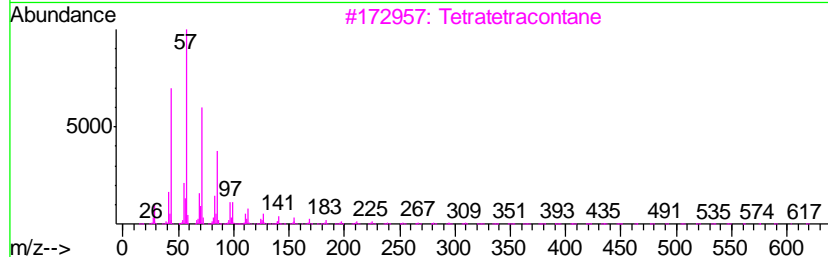
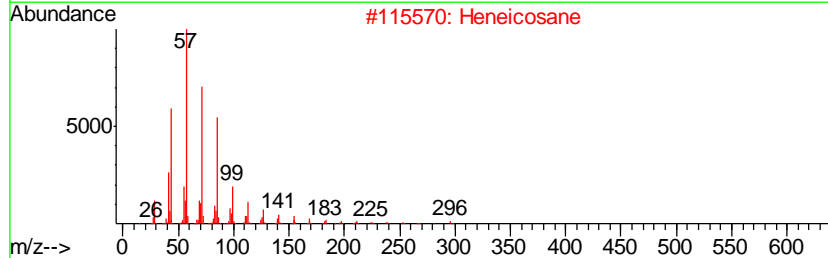
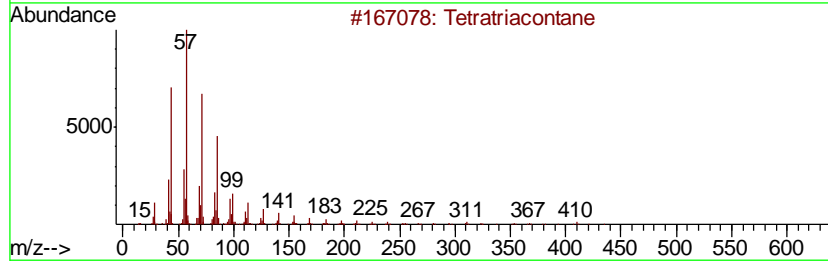
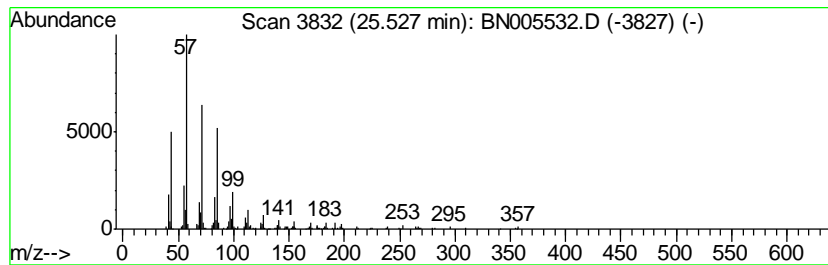
Quant Method : Z:\SVOASRV\HPCHEM1\BNA_N\METHODS\SOM-EPA-BN041919MA.M
 Quant Title : SVOA CALIBRATION

TIC Library : C:\DATABASE\NIST02.L
 TIC Integration Parameters: LSCINT.P

 Peak Number 8 (DEL) Alkane: Straight-Chai... Concentration Rank 6

R.T.	EstConc	Area	Relative to ISTD	R.T.
25.53	4.01 ng/ul	662791	Perylene-d12	23.42

Hit#	of	Tentative ID	MW	MolForm	CAS#	Qual
1	5	Tetratriacontane	479	C34H70	014167-59-0	90
2		Heneicosane	296	C21H44	000629-94-7	90
3		Tetratetracontane	619	C44H90	007098-22-8	90
4		Triacosane	422	C30H62	000638-68-6	87
5		Octacosane	394	C28H58	000630-02-4	87



Data Path : Z:\SVOASRV\HPCHEM1\BNA N\DATA\BN050819\
 Data File : BN005532.D
 Acq On : 08 May 2019 14:46
 Operator : JU/SJ
 Sample : K2606-06
 Misc :
 ALS Vial : 5 Sample Multiplier: 1

Instrument :
 BNA_N
 ClientSampled :
 A5140

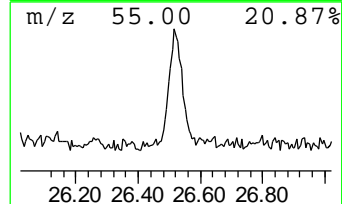
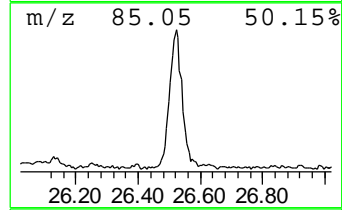
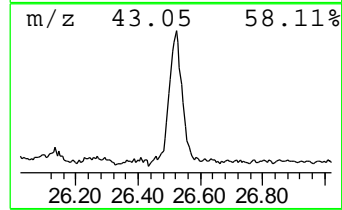
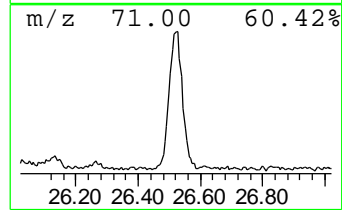
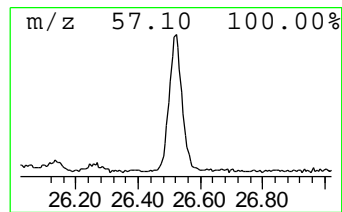
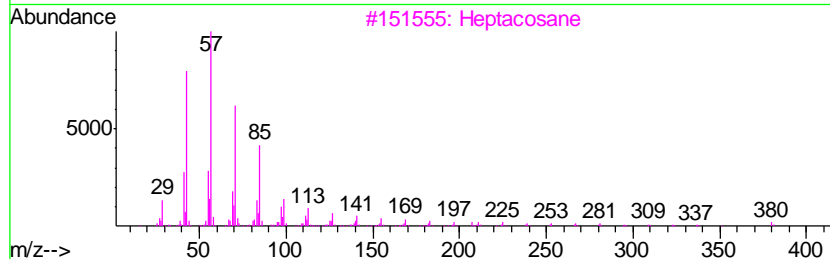
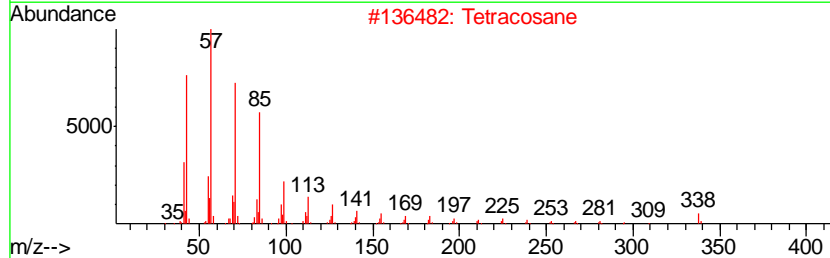
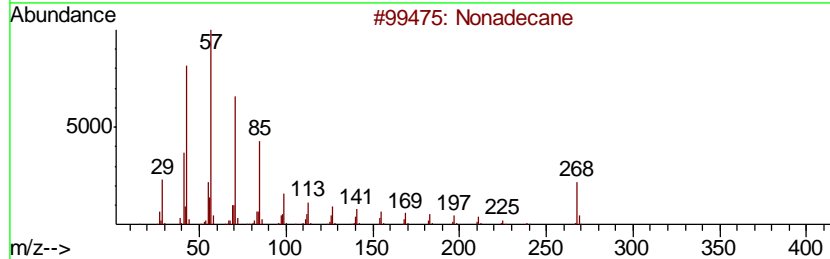
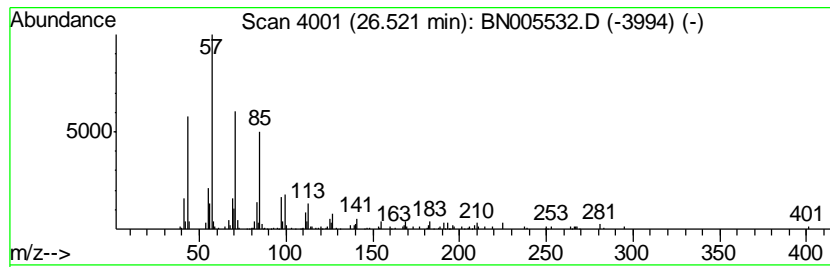
Quant Method : Z:\SVOASRV\HPCHEM1\BNA_N\METHODS\SOM-EPA-BN041919MA.M
 Quant Title : SVOA CALIBRATION

TIC Library : C:\DATABASE\NIST02.L
 TIC Integration Parameters: LSCINT.P

 Peak Number 9 (DEL) Alkane: Straight-Chai... Concentration Rank 9

R.T.	EstConc	Area	Relative to ISTD	R.T.
26.52	3.22 ng/ul	531570	Perylene-d12	23.42

Hit#	of	Tentative ID	MW	MolForm	CAS#	Qual
1	5	Nonadecane	268	C19H40	000629-92-5	95
2		Tetracosane	338	C24H50	000646-31-1	91
3		Heptacosane	380	C27H56	000593-49-7	91
4		Tetracosane	338	C24H50	000646-31-1	91
5		Octacosane	394	C28H58	000630-02-4	90



Data Path : Z:\SVOASRV\HPCHEM1\BNA_N\DATA\BN050819\
 Data File : BN005532.D
 Acq On : 08 May 2019 14:46
 Operator : JU/SJ
 Sample : K2606-06
 Misc :
 ALS Vial : 5 Sample Multiplier: 1

Instrument :
 BNA_N
 ClientSampleId :
 A5140

Quant Method : Z:\SVOASRV\HPCHEM1\BNA_N\METHODS\SOM-EPA-BN041919MA.M
 Quant Title : SVOA CALIBRATION

TIC Library : C:\DATABASE\NIST02.L
 TIC Integration Parameters: LSCINT.P

TIC Top Hit name	RT	EstConc	Units	Response	--Internal Standard--			
					#	RT	Resp	Conc
n-Hexadecanoic acid	17.90	4.4	ng/ul	883478	4	16.97	4016570	20.0
9-Octadecenamide, ...	20.35	4.7	ng/ul	971366	5	21.21	4113550	20.0
Ethanol, 2-(tetra...	20.95	3.6	ng/ul	735874	5	21.21	4113550	20.0
(DEL) Alkane: Str...	22.29	3.3	ng/ul	683362	5	21.21	4113550	20.0
(DEL) Alkane: Str...	22.78	5.1	ng/ul	846791	6	23.42	3304170	20.0
(DEL) Alkane: Str...	23.96	6.4	ng/ul	1062570	6	23.42	3304170	20.0
(DEL) Alkane: Str...	24.69	5.6	ng/ul	930527	6	23.42	3304170	20.0
(DEL) Alkane: Str...	25.53	4.0	ng/ul	662791	6	23.42	3304170	20.0
(DEL) Alkane: Str...	26.52	3.2	ng/ul	531570	6	23.42	3304170	20.0