

Data Path : Z:\svoasrv\HPCHEM1\BNA_N\Data\BN051322\
 Data File : BN019780.D
 Acq On : 13 May 2022 22:17
 Operator : CG/JU
 Sample : N2794-05
 Misc :
 ALS Vial : 11 Sample Multiplier: 1

Instrument :
 BNA_N
 ClientSampleId :
 RW9-MW01D2-F-20220510

Quant Time: May 14 00:00:19 2022
 Quant Method : Z:\SVOASRV\HPCHEM1\BNA_N\METHODS\8270-SIM-BN051322.M
 Quant Title : ASP BNA STANDARDS FOR 5 POINT CALIBRATION
 QLast Update : Fri May 13 02:41:37 2022
 Response via : Initial Calibration

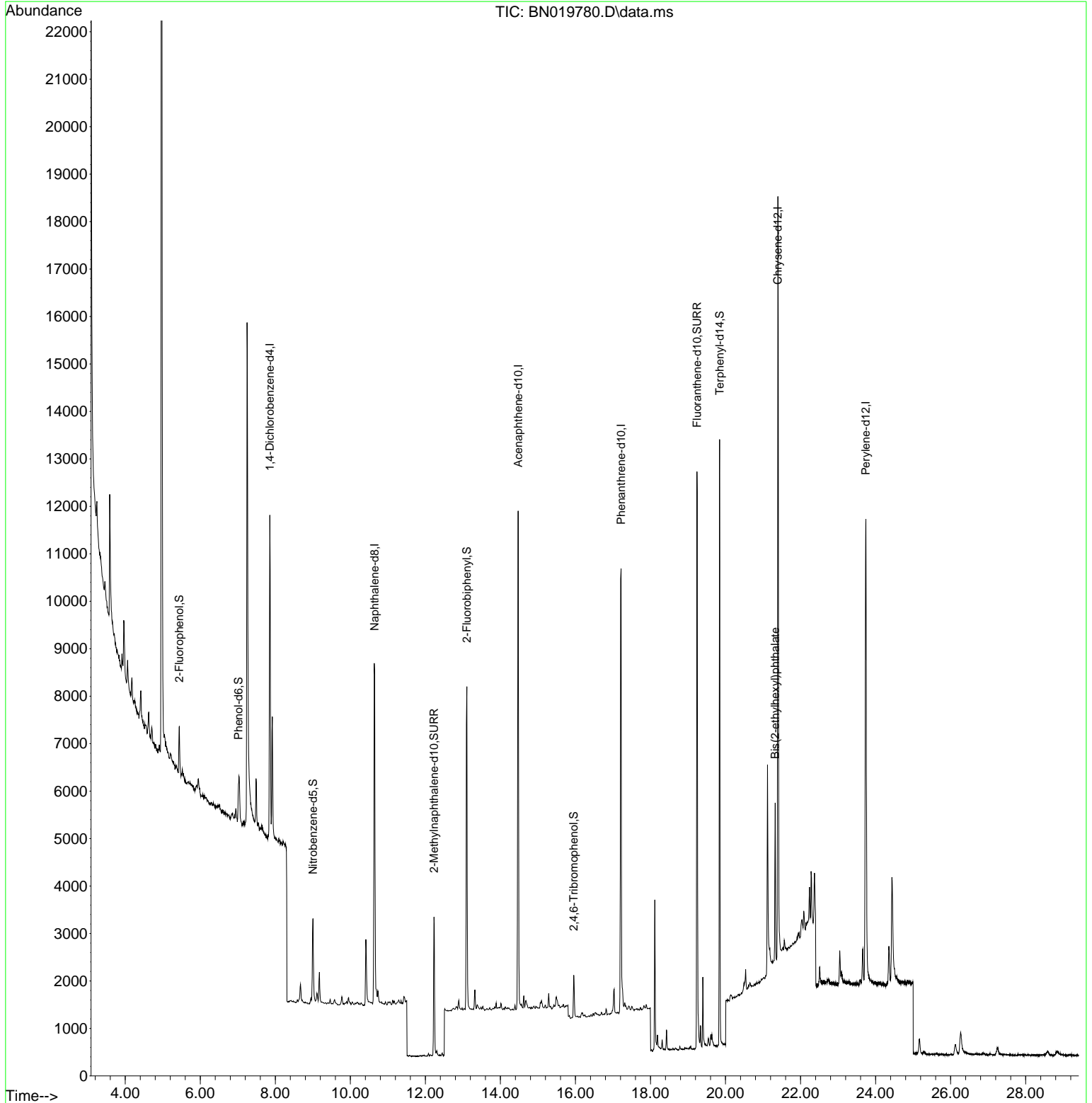
Compound	R.T.	QIon	Response	Conc	Units	Dev(Min)
Internal Standards						
1) 1,4-Dichlorobenzene-d4	7.854	152	3544	0.400	ng	0.00
7) Naphthalene-d8	10.648	136	10752	0.400	ng	0.00
13) Acenaphthene-d10	14.474	164	6307	0.400	ng	0.00
19) Phenanthrene-d10	17.215	188	14351	0.400	ng	0.00
29) Chrysene-d12	21.395	240	15388	0.400	ng	0.00
35) Perylene-d12	23.741	264	14695	0.400	ng	0.00
System Monitoring Compounds						
4) 2-Fluorophenol	5.442	112	888	0.100	ng	0.00
5) Phenol-d6	7.017	99	664	0.060	ng	0.00
8) Nitrobenzene-d5	9.003	82	1657	0.204	ng	0.00
11) 2-Methylnaphthalene-d10	12.231	152	4276	0.228	ng	0.00
14) 2,4,6-Tribromophenol	15.954	330	518	0.208	ng	-0.01
15) 2-Fluorobiphenyl	13.105	172	6446	0.234	ng	0.00
27) Fluoranthene-d10	19.240	212	14229	0.349	ng	0.00
31) Terphenyl-d14	19.843	244	13824	0.381	ng	0.00
Target Compounds						Qvalue
34) Bis(2-ethylhexyl)phtha...	21.324	149	3194	0.137	ng	98

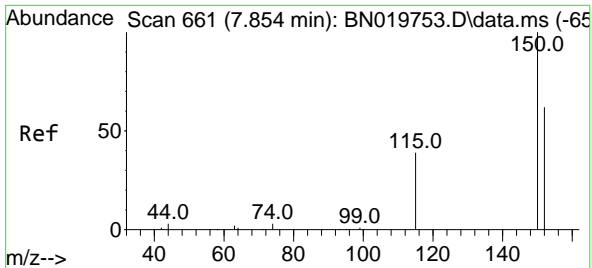
(#) = qualifier out of range (m) = manual integration (+) = signals summed

Data Path : Z:\svoasrv\HPCHEM1\BNA_N\Data\BN051322\
 Data File : BN019780.D
 Acq On : 13 May 2022 22:17
 Operator : CG/JU
 Sample : N2794-05
 Misc :
 ALS Vial : 11 Sample Multiplier: 1

Instrument :
 BNA_N
 ClientSampleId :
 RW9-MW01D2-F-20220510

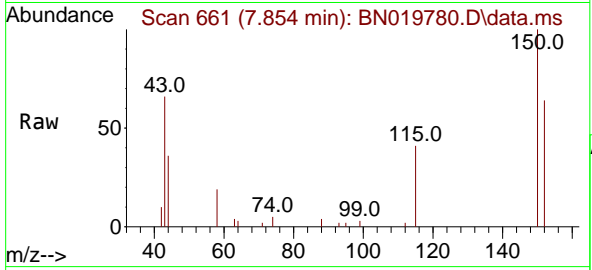
Quant Time: May 14 00:00:19 2022
 Quant Method : Z:\SVOASRV\HPCHEM1\BNA_N\METHODS\8270-SIM-BN051322.M
 Quant Title : ASP BNA STANDARDS FOR 5 POINT CALIBRATION
 QLast Update : Fri May 13 02:41:37 2022
 Response via : Initial Calibration



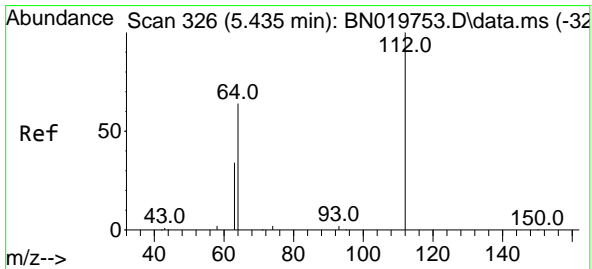
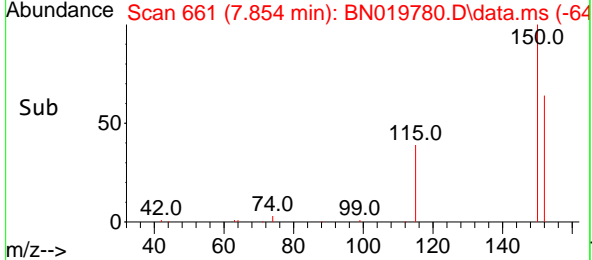
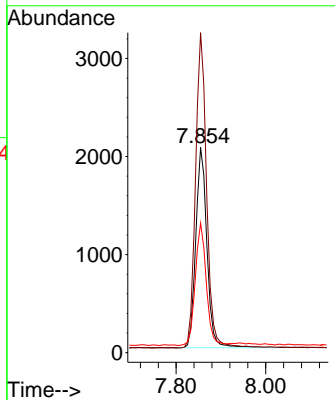


#1
 1,4-Dichlorobenzene-d4
 Concen: 0.400 ng
 RT: 7.854 min Scan# 60
 Delta R.T. -0.008 min
 Lab File: BN019780.D
 Acq: 13 May 2022 22:17

Instrument :
 BNA_N
 ClientSampleId :
 RW9-MW01D2-F-20220510

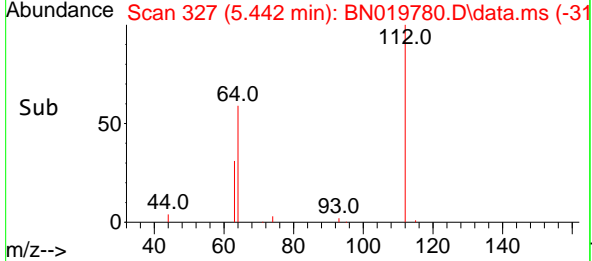
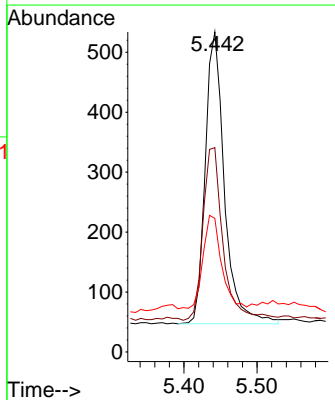
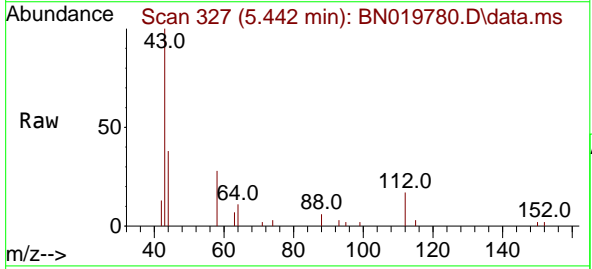


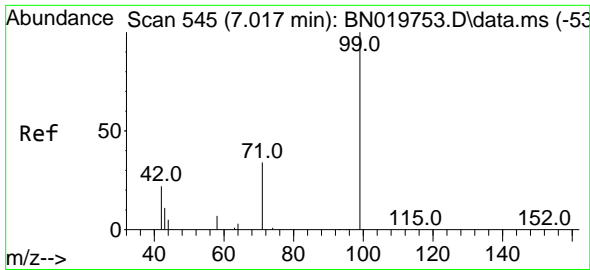
Tgt Ion:152 Resp: 3544
 Ion Ratio Lower Upper
 152 100
 150 155.9 127.9 191.9
 115 63.2 51.4 77.2



#4
 2-Fluorophenol
 Concen: 0.100 ng
 RT: 5.442 min Scan# 327
 Delta R.T. 0.000 min
 Lab File: BN019780.D
 Acq: 13 May 2022 22:17

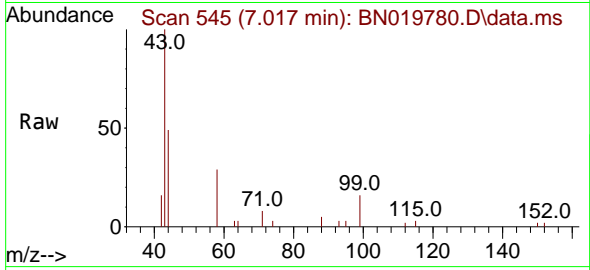
Tgt Ion:112 Resp: 888
 Ion Ratio Lower Upper
 112 100
 64 61.9 49.1 73.7
 63 30.3 26.3 39.5





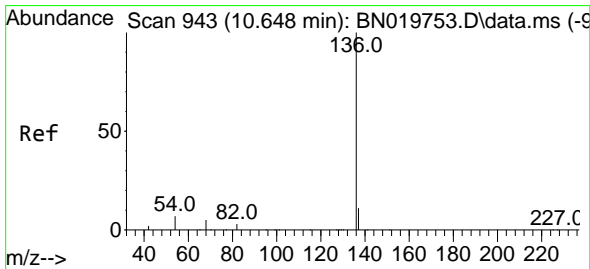
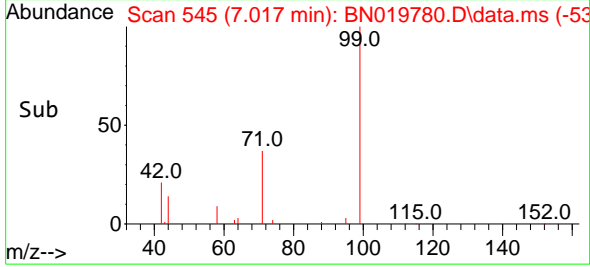
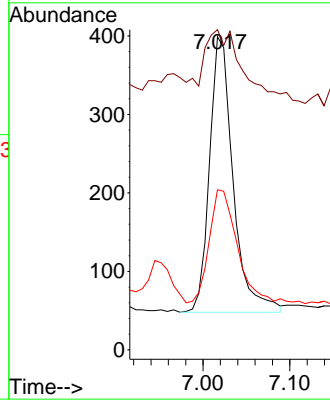
#5
 Phenol-d6
 Concen: 0.060 ng
 RT: 7.017 min Scan# 54
 Delta R.T. -0.007 min
 Lab File: BN019780.D
 Acq: 13 May 2022 22:17

Instrument :
 BNA_N
 ClientSampleId :
 RW9-MW01D2-F-20220510



Tgt Ion: 99 Resp: 664

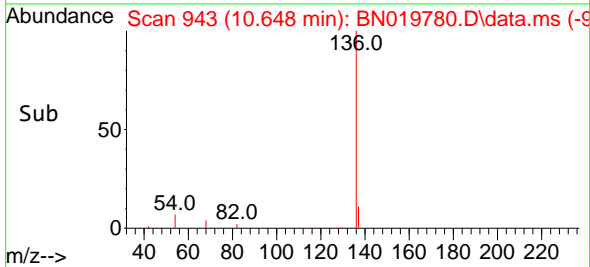
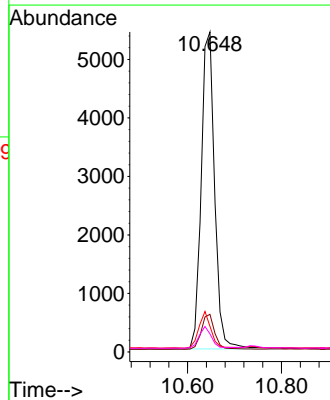
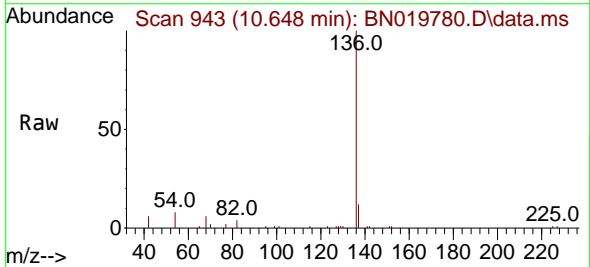
Ion	Ratio	Lower	Upper
99	100		
42	33.3	19.3	28.9#
71	48.0	27.5	41.3#

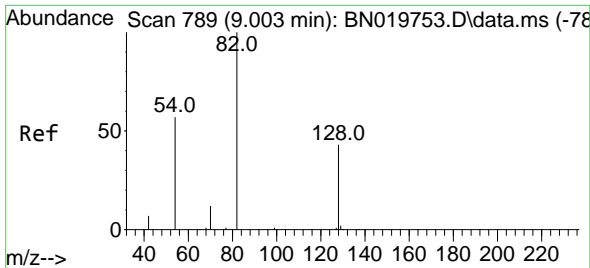


#7
 Naphthalene-d8
 Concen: 0.400 ng
 RT: 10.648 min Scan# 943
 Delta R.T. 0.000 min
 Lab File: BN019780.D
 Acq: 13 May 2022 22:17

Tgt Ion: 136 Resp: 10752

Ion	Ratio	Lower	Upper
136	100		
137	11.7	9.0	13.6
54	8.0	6.2	9.2
68	5.6	4.4	6.6

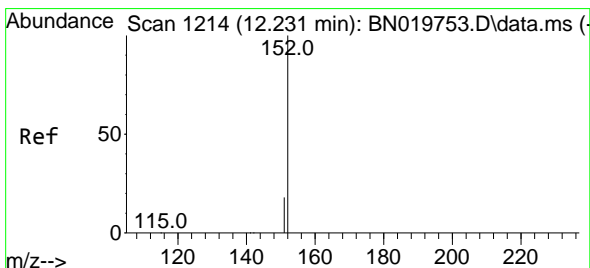
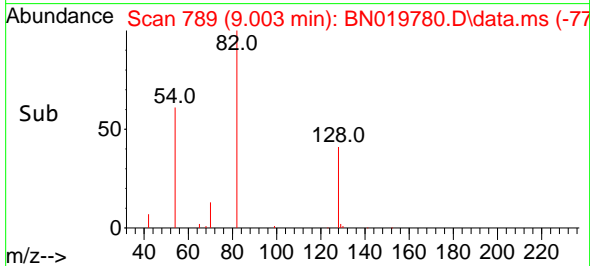
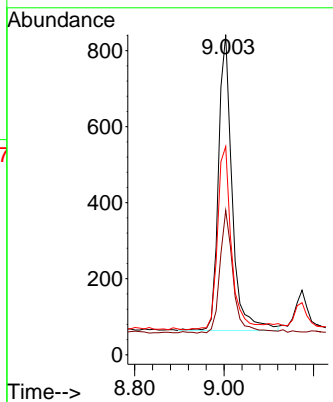
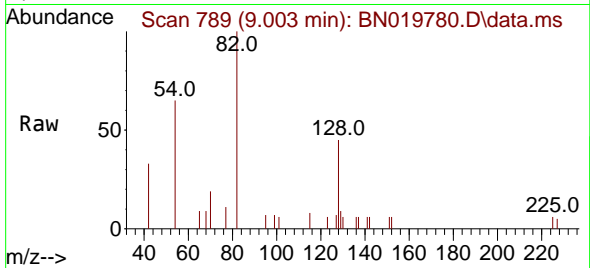




#8
 Nitrobenzene-d5
 Concen: 0.204 ng
 RT: 9.003 min Scan# 789
 Delta R.T. 0.000 min
 Lab File: BN019780.D
 Acq: 13 May 2022 22:17

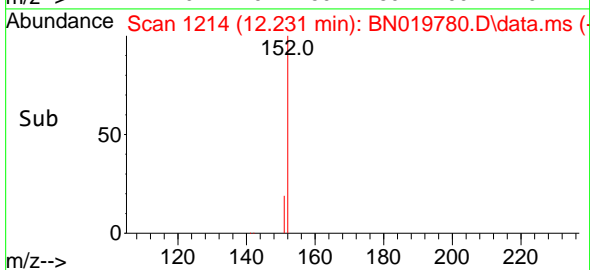
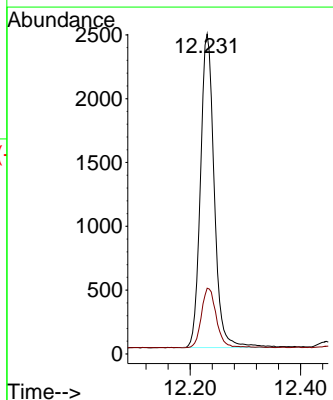
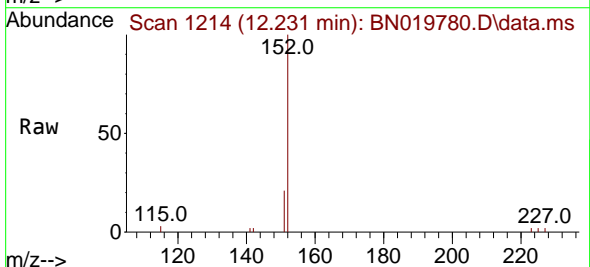
Instrument :
 BNA_N
 ClientSampleId :
 RW9-MW01D2-F-20220510

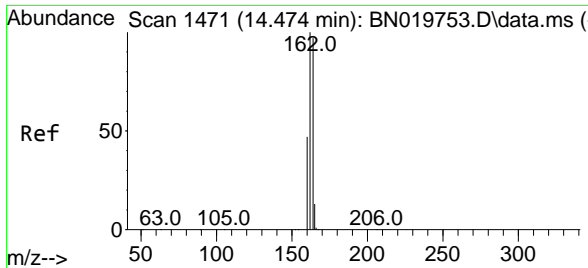
Tgt Ion	Resp	Lower	Upper
82	1657		
128	45.1	35.0	52.6
54	65.1	46.2	69.4



#11
 2-Methylnaphthalene-d10
 Concen: 0.228 ng
 RT: 12.231 min Scan# 1214
 Delta R.T. -0.004 min
 Lab File: BN019780.D
 Acq: 13 May 2022 22:17

Tgt Ion	Resp	Lower	Upper
152	4276		
151	20.7	16.2	24.4

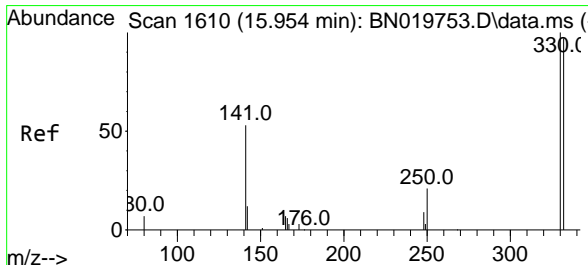
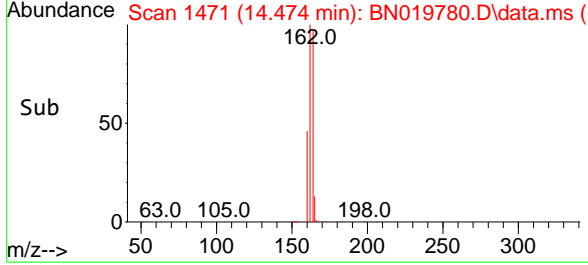
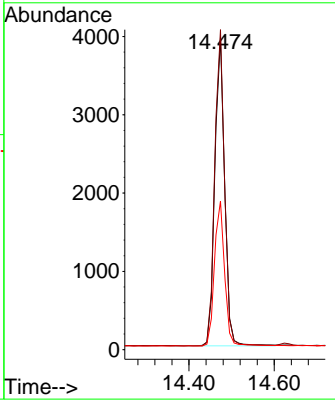
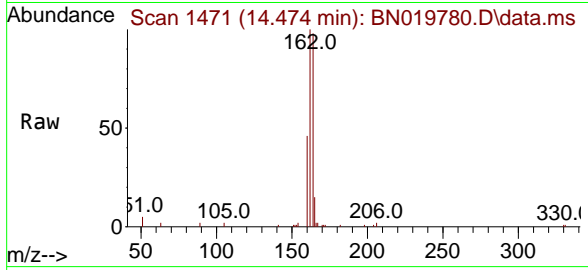




#13
 Acenaphthene-d10
 Concen: 0.400 ng
 RT: 14.474 min Scan# 1471
 Delta R.T. 0.000 min
 Lab File: BN019780.D
 Acq: 13 May 2022 22:17

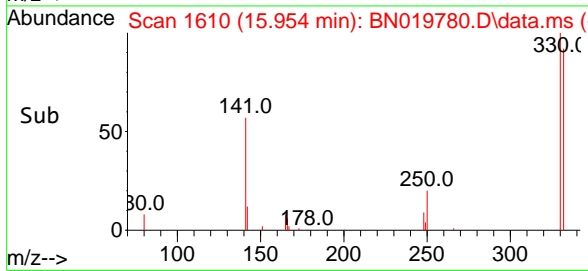
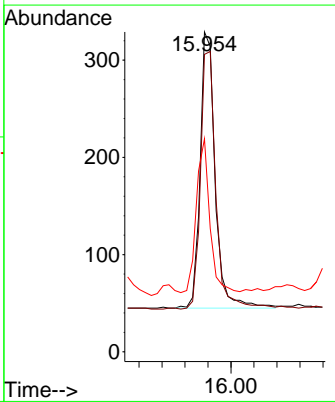
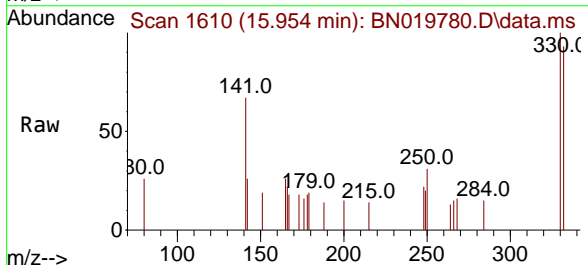
Instrument :
 BNA_N
ClientSampleId :
 RW9-MW01D2-F-20220510

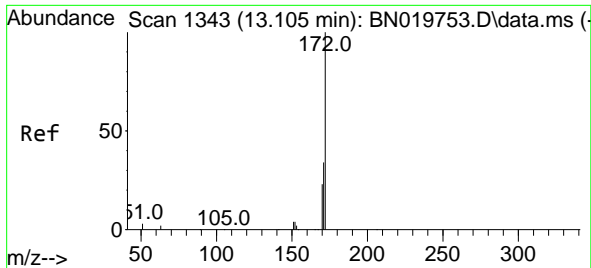
Tgt Ion	Resp	Lower	Upper
164	100		
162	102.6	82.1	123.1
160	47.7	38.6	58.0



#14
 2,4,6-Tribromophenol
 Concen: 0.208 ng
 RT: 15.954 min Scan# 1610
 Delta R.T. -0.010 min
 Lab File: BN019780.D
 Acq: 13 May 2022 22:17

Tgt Ion	Resp	Lower	Upper
330	100		
332	95.9	77.6	116.4
141	49.4	41.0	61.4

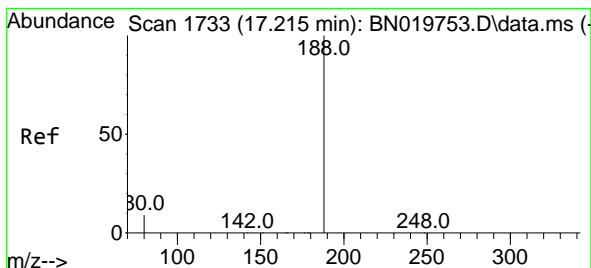
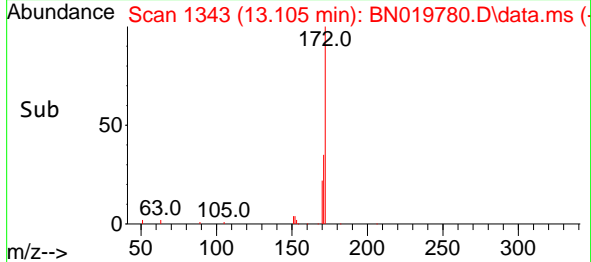
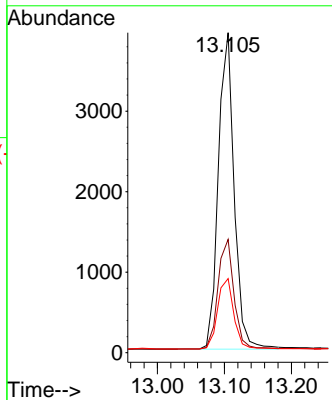
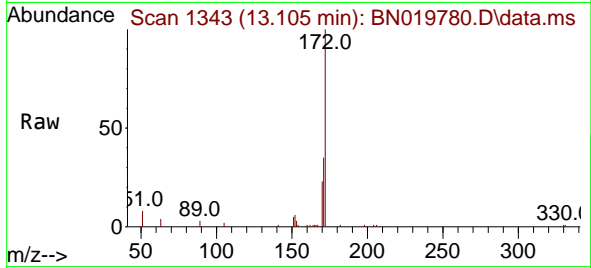




#15
 2-Fluorobiphenyl
 Concen: 0.234 ng
 RT: 13.105 min Scan# 11
 Delta R.T. 0.000 min
 Lab File: BN019780.D
 Acq: 13 May 2022 22:17

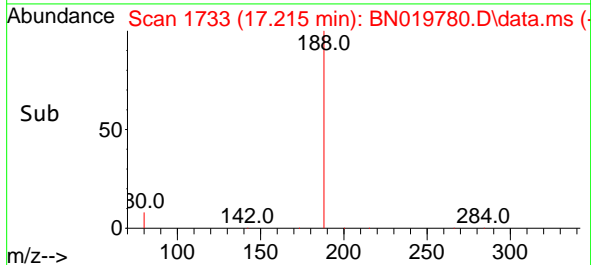
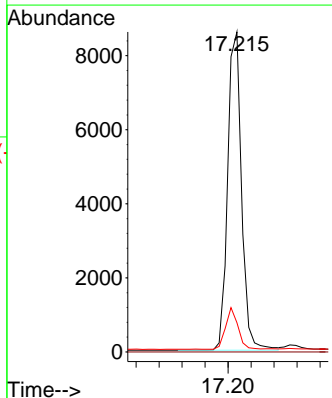
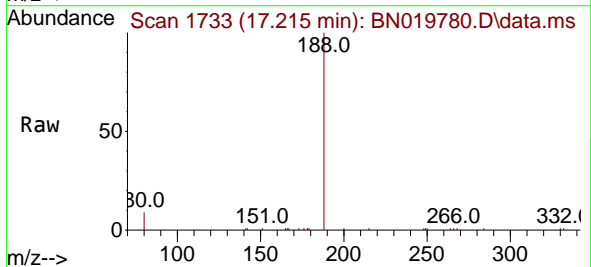
Instrument : BNA_N
 ClientSampleId : RW9-MW01D2-F-20220510

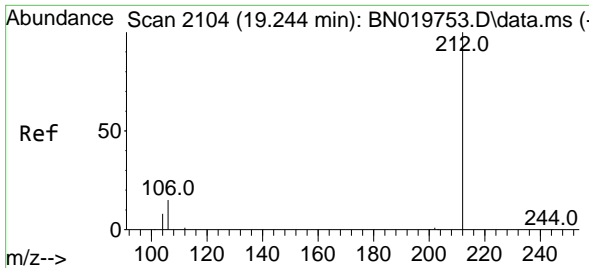
Tgt Ion	Resp	Lower	Upper
172	6446	100	100
171	35.4	27.2	40.8
170	23.1	18.2	27.4



#19
 Phenanthrene-d10
 Concen: 0.400 ng
 RT: 17.215 min Scan# 1733
 Delta R.T. 0.000 min
 Lab File: BN019780.D
 Acq: 13 May 2022 22:17

Tgt Ion	Resp	Lower	Upper
188	14351	100	100
94	0.0	0.0	0.0
80	9.2	7.4	11.2



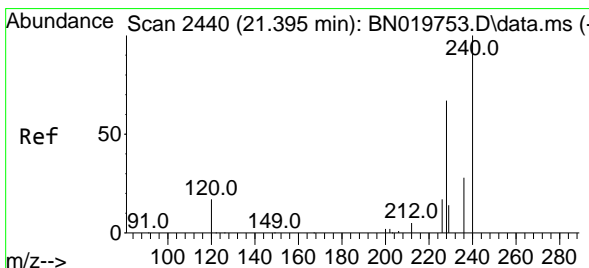
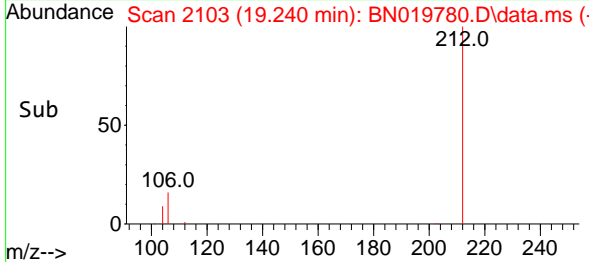
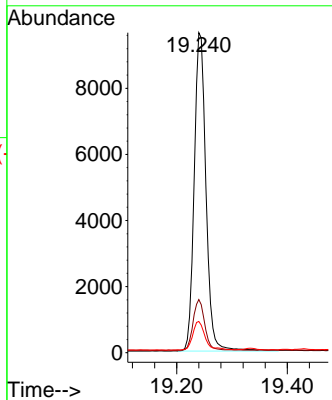
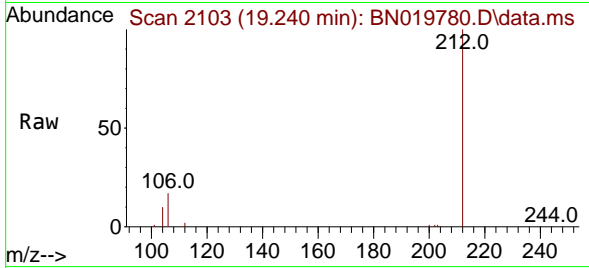


#27
 Fluoranthene-d10
 Concen: 0.349 ng
 RT: 19.240 min Scan# 2103
 Delta R.T. -0.008 min
 Lab File: BN019780.D
 Acq: 13 May 2022 22:17

Instrument : BNA_N
 ClientSampleId : RW9-MW01D2-F-20220510

Tgt Ion:212 Resp: 14229

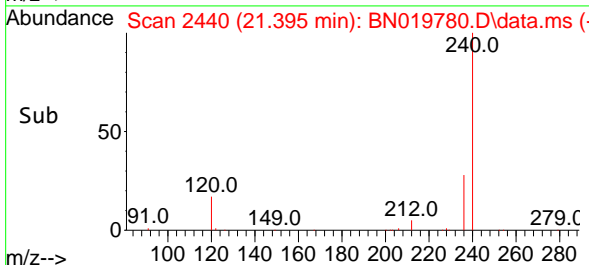
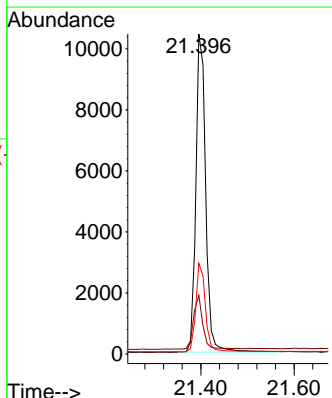
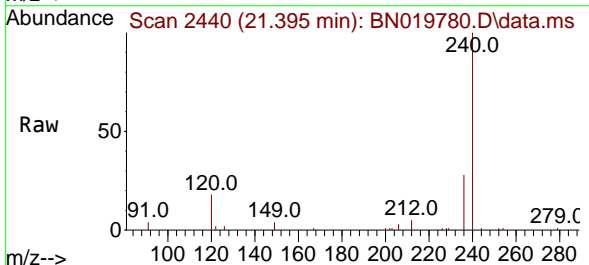
Ion	Ratio	Lower	Upper
212	100		
106	15.7	12.6	19.0
104	9.6	7.2	10.8

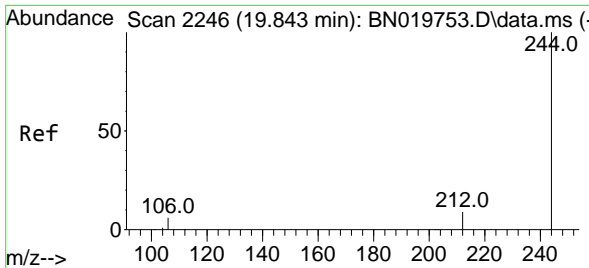


#29
 Chrysene-d12
 Concen: 0.400 ng
 RT: 21.395 min Scan# 2440
 Delta R.T. -0.009 min
 Lab File: BN019780.D
 Acq: 13 May 2022 22:17

Tgt Ion:240 Resp: 15388

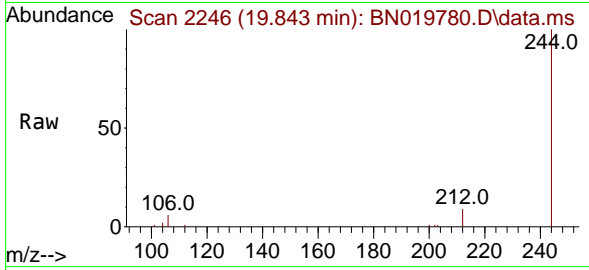
Ion	Ratio	Lower	Upper
240	100		
120	18.2	14.6	21.8
236	28.3	22.6	33.8



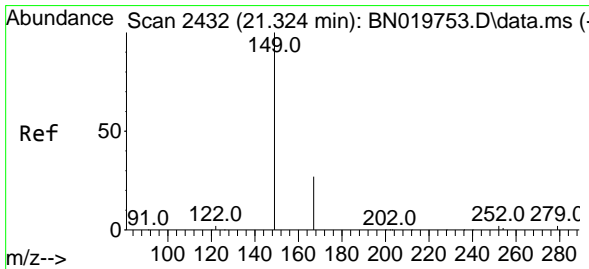
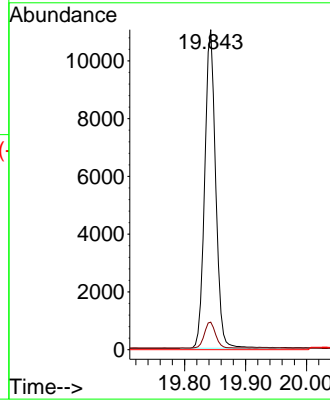
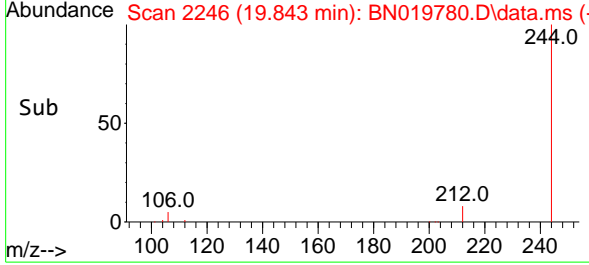


#31
 Terphenyl-d14
 Concen: 0.381 ng
 RT: 19.843 min Scan# 21
 Delta R.T. -0.004 min
 Lab File: BN019780.D
 Acq: 13 May 2022 22:17

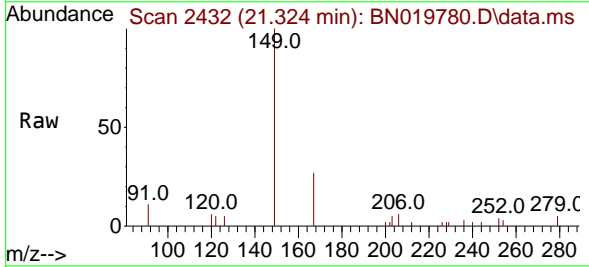
Instrument :
 BNA_N
 ClientSampleId :
 RW9-MW01D2-F-20220510



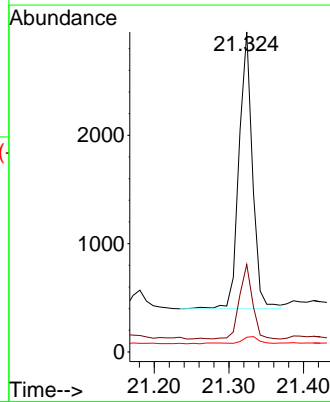
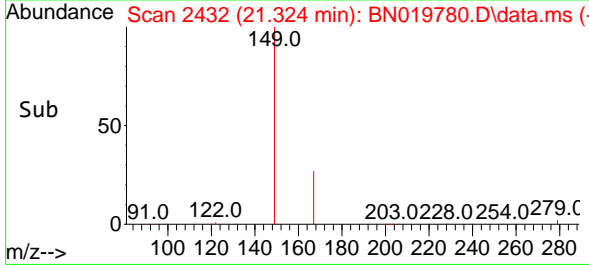
Tgt Ion:244 Resp: 13824
 Ion Ratio Lower Upper
 244 100
 212 8.6 7.1 10.7
 122 0.0 0.0 0.0

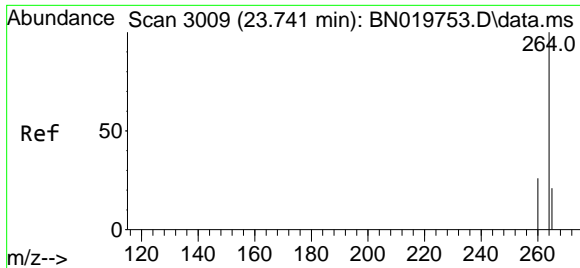


#34
 Bis(2-ethylhexyl)phthalate
 Concen: 0.137 ng
 RT: 21.324 min Scan# 2432
 Delta R.T. 0.000 min
 Lab File: BN019780.D
 Acq: 13 May 2022 22:17



Tgt Ion:149 Resp: 3194
 Ion Ratio Lower Upper
 149 100
 167 25.8 21.7 32.5
 279 2.8 2.2 3.2





#35
 Perylene-d12
 Concen: 0.400 ng
 RT: 23.741 min Scan# 30
 Delta R.T. 0.000 min
 Lab File: BN019780.D
 Acq: 13 May 2022 22:17

Instrument :
 BNA_N
 ClientSampleId :
 RW9-MW01D2-F-20220510

Tgt Ion:264 Resp: 14695

Ion	Ratio	Lower	Upper
264	100		
260	26.2	20.9	31.3
265	35.2	28.0	42.0

