

Data Path : Z:\svoasrv\HPCHEM1\BNA_N\Data\BN052623\
 Data File : BN025631.D
 Acq On : 27 May 2023 05:42
 Operator : CG/JU
 Sample : 02880-03
 Misc :
 ALS Vial : 27 Sample Multiplier: 1

Instrument :
 BNA_N
 ClientSampleId :
 RE132D6-20230517

Quant Time: May 27 06:36:16 2023
 Quant Method : Z:\svoasrv\HPCHEM1\BNA_N\Methods\8270-SIM-BN052623.M
 Quant Title : ASP BNA STANDARDS FOR 5 POINT CALIBRATION
 QLast Update : Sat May 27 03:51:06 2023
 Response via : Initial Calibration

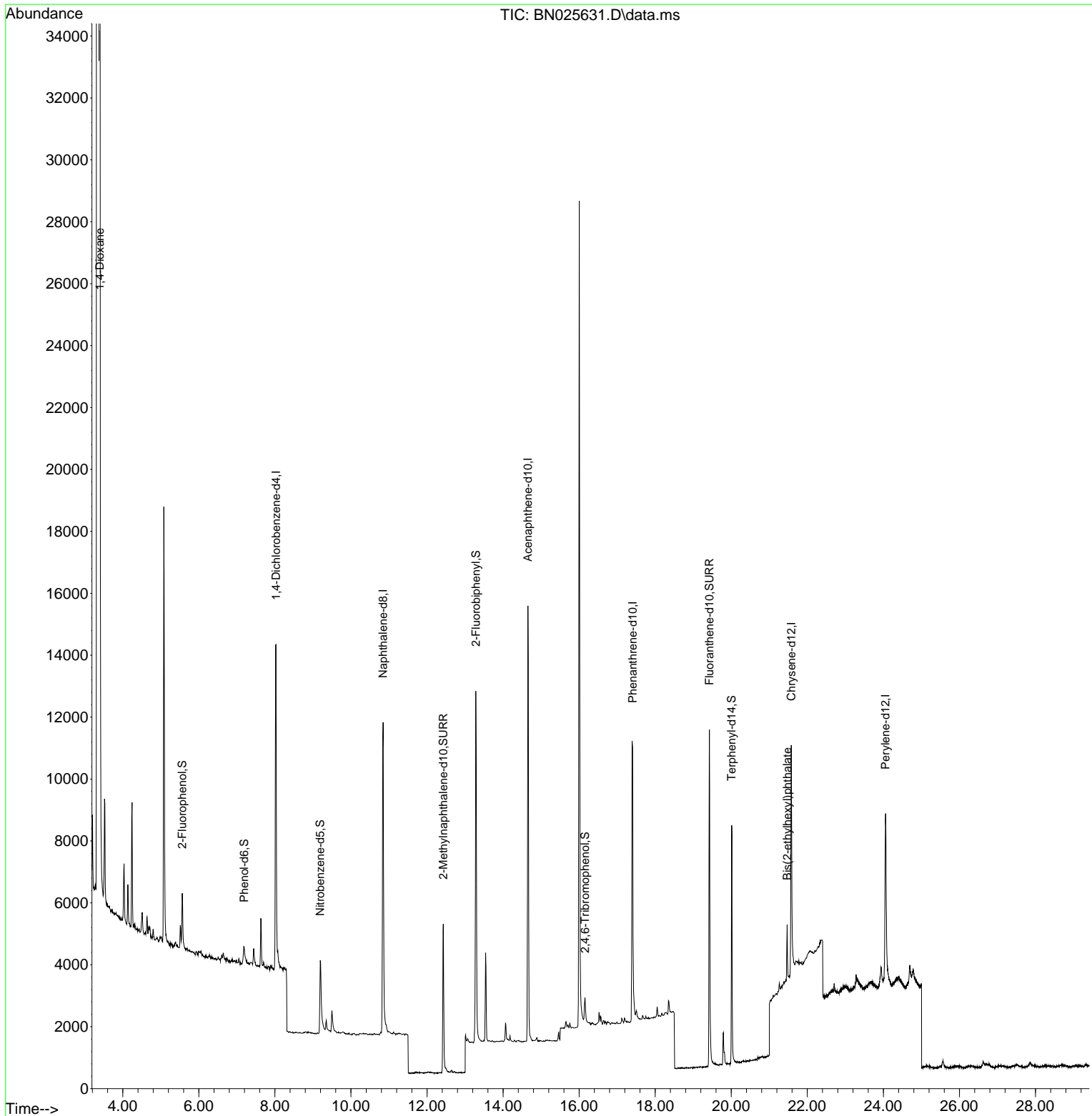
Compound	R.T.	QIon	Response	Conc	Units	Dev(Min)	
Internal Standards							
1) 1,4-Dichlorobenzene-d4	8.027	152	6045	0.400	ng	0.00	
7) Naphthalene-d8	10.846	136	16273	0.400	ng	0.00	
13) Acenaphthene-d10	14.651	164	8901	0.400	ng	0.00	
19) Phenanthrene-d10	17.406	188	15919	0.400	ng	0.01	#
29) Chrysene-d12	21.578	240	9260	0.400	ng	0.00	
35) Perylene-d12	24.057	264	9095	0.400	ng	-0.02	
System Monitoring Compounds							
4) 2-Fluorophenol	5.564	112	1814	0.117	ng	0.00	
5) Phenol-d6	7.189	99	988	0.053	ng	0.01	
8) Nitrobenzene-d5	9.191	82	3332	0.245	ng	0.00	
11) 2-Methylnaphthalene-d10	12.426	152	7579	0.326	ng	0.00	
14) 2,4,6-Tribromophenol	16.152	330	572	0.318	ng	0.00	
15) 2-Fluorobiphenyl	13.283	172	10902	0.297	ng	0.00	
27) Fluoranthene-d10	19.425	212	13337	0.370	ng	0.00	
31) Terphenyl-d14	20.011	244	8136	0.401	ng	0.00	
Target Compounds							
2) 1,4-Dioxane	3.397	88	36057	5.151	ng	97	
34) Bis(2-ethylhexyl)phtha...	21.471	149	1790	0.085	ng	97	#

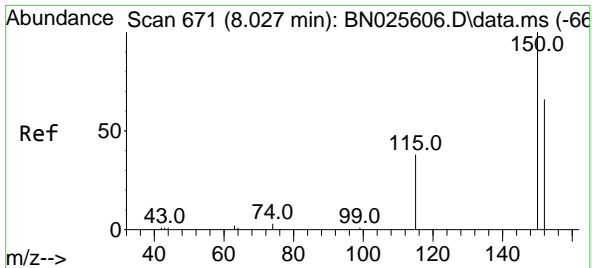
(#) = qualifier out of range (m) = manual integration (+) = signals summed

Data Path : Z:\svoasrv\HPCHEM1\BNA_N\Data\BN052623\
 Data File : BN025631.D
 Acq On : 27 May 2023 05:42
 Operator : CG/JU
 Sample : 02880-03
 Misc :
 ALS Vial : 27 Sample Multiplier: 1

Instrument :
 BNA_N
 ClientSampleId :
 RE132D6-20230517

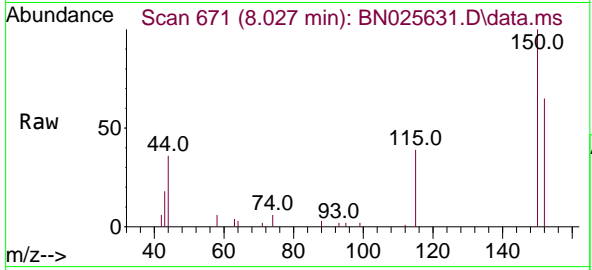
Quant Time: May 27 06:36:16 2023
 Quant Method : Z:\svoasrv\HPCHEM1\BNA_N\Methods\8270-SIM-BN052623.M
 Quant Title : ASP BNA STANDARDS FOR 5 POINT CALIBRATION
 QLast Update : Sat May 27 03:51:06 2023
 Response via : Initial Calibration



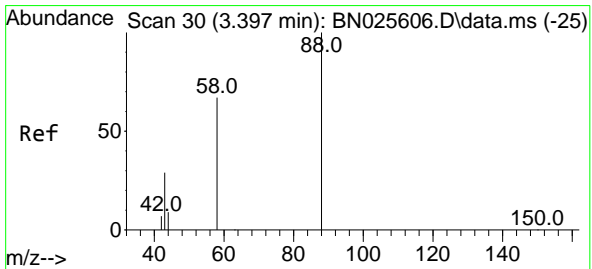
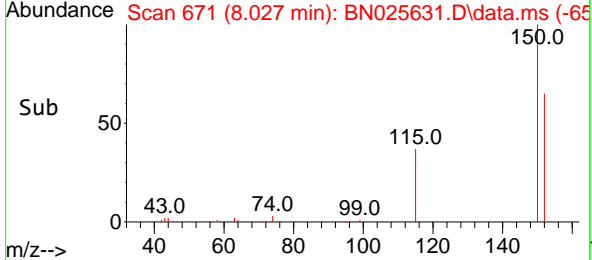
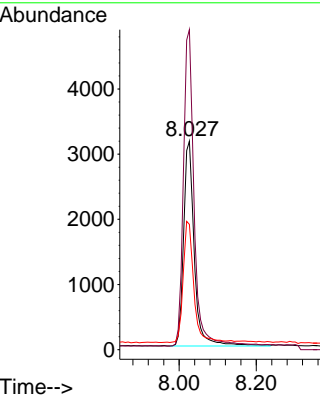


#1
 1,4-Dichlorobenzene-d4
 Concen: 0.400 ng
 RT: 8.027 min Scan# 61
 Delta R.T. -0.000 min
 Lab File: BN025631.D
 Acq: 27 May 2023 05:42

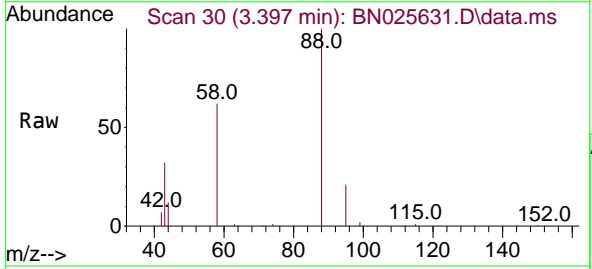
Instrument : BNA_N
 ClientSampleId : RE132D6-20230517



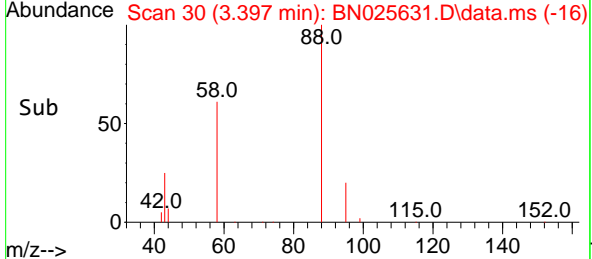
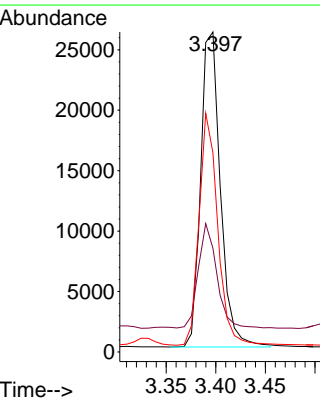
Tgt Ion:152 Resp: 6045
 Ion Ratio Lower Upper
 152 100
 150 153.5 121.0 181.6
 115 60.1 48.5 72.7

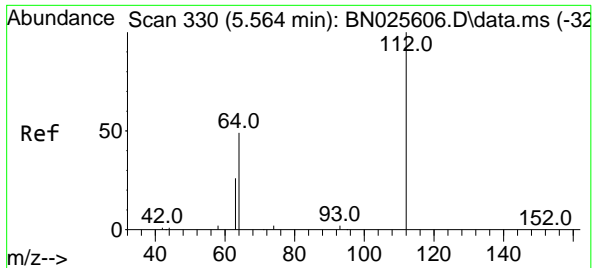


#2
 1,4-Dioxane
 Concen: 5.151 ng
 RT: 3.397 min Scan# 30
 Delta R.T. -0.000 min
 Lab File: BN025631.D
 Acq: 27 May 2023 05:42



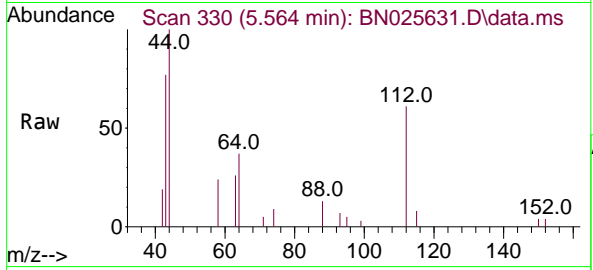
Tgt Ion: 88 Resp: 36057
 Ion Ratio Lower Upper
 88 100
 43 30.7 26.5 39.7
 58 69.3 56.8 85.2





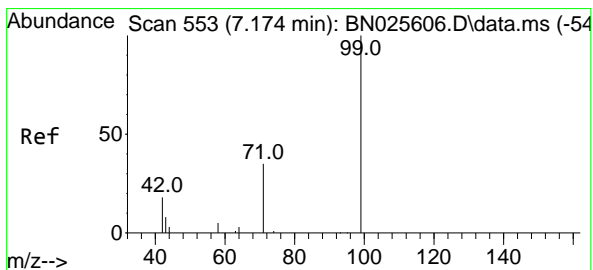
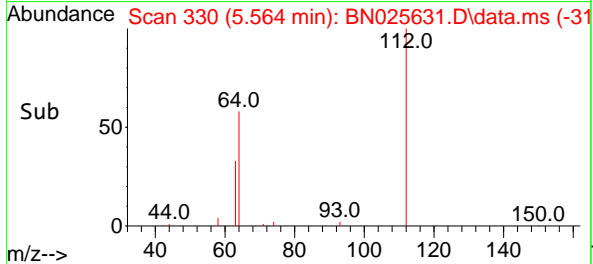
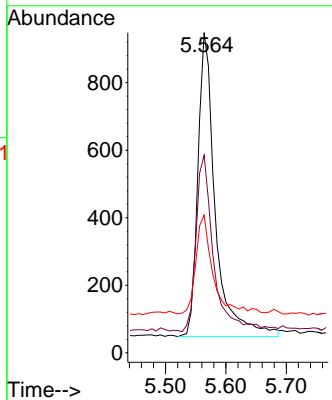
#4
 2-Fluorophenol
 Concen: 0.117 ng
 RT: 5.564 min Scan# 31
 Delta R.T. -0.000 min
 Lab File: BN025631.D
 Acq: 27 May 2023 05:42

Instrument :
 BNA_N
 ClientSampleId :
 RE132D6-20230517



Tgt Ion: 112 Resp: 1814

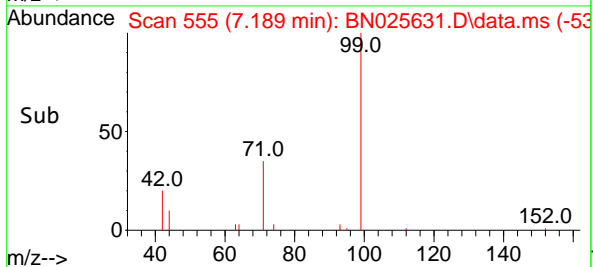
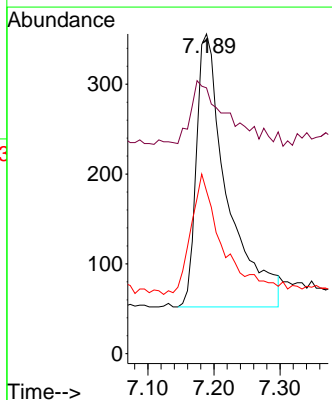
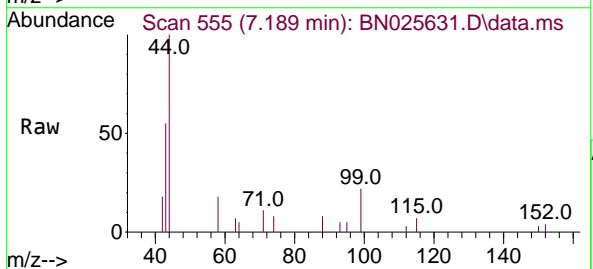
Ion	Ratio	Lower	Upper
112	100		
64	57.2	45.7	68.5
63	31.8	26.2	39.2

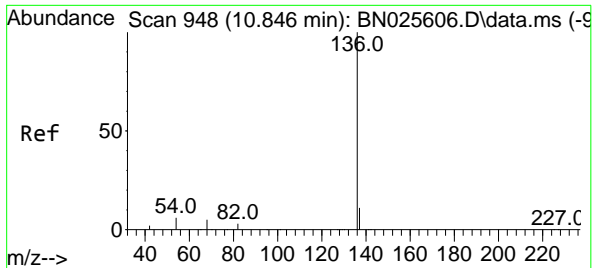


#5
 Phenol-d6
 Concen: 0.053 ng
 RT: 7.189 min Scan# 555
 Delta R.T. 0.014 min
 Lab File: BN025631.D
 Acq: 27 May 2023 05:42

Tgt Ion: 99 Resp: 988

Ion	Ratio	Lower	Upper
99	100		
42	25.6	17.1	25.7
71	45.0	29.3	43.9



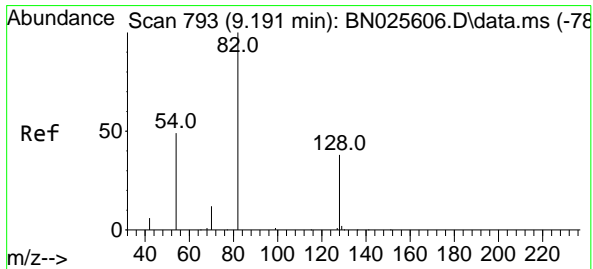
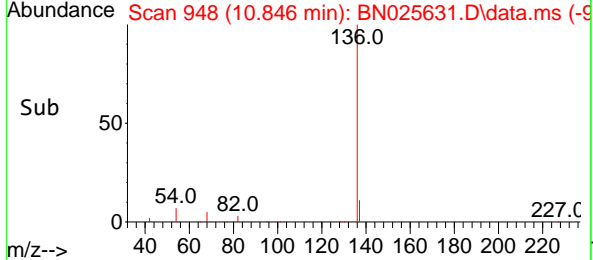
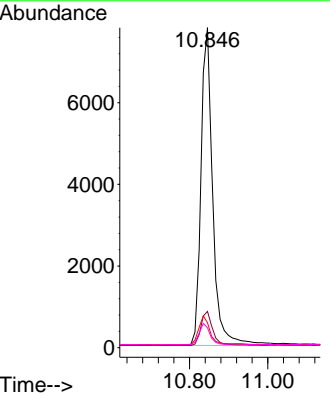
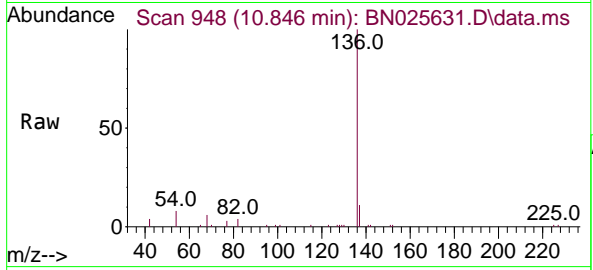


#7
 Naphthalene-d8
 Concen: 0.400 ng
 RT: 10.846 min Scan# 948
 Delta R.T. -0.000 min
 Lab File: BN025631.D
 Acq: 27 May 2023 05:42

Instrument : BNA_N
 ClientSampleId : RE132D6-20230517

Tgt Ion:136 Resp: 16273

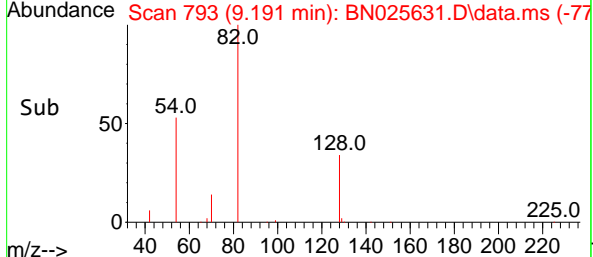
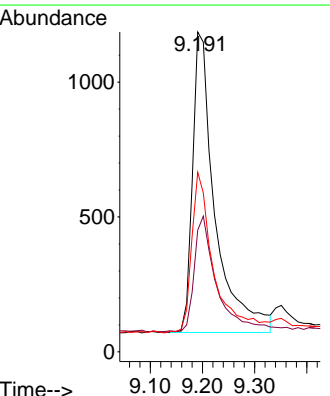
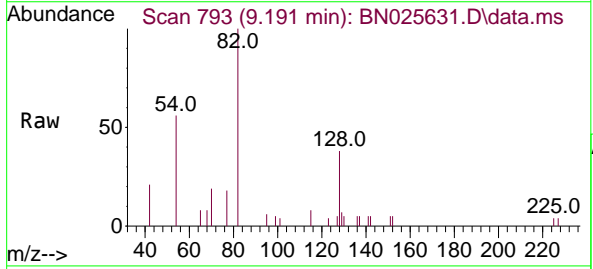
Ion	Ratio	Lower	Upper
136	100		
137	11.4	9.1	13.7
54	7.8	5.4	8.0
68	6.2	4.3	6.5

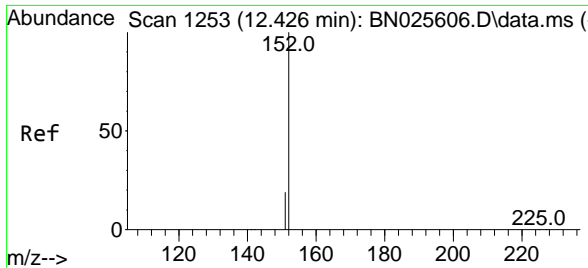


#8
 Nitrobenzene-d5
 Concen: 0.245 ng
 RT: 9.191 min Scan# 793
 Delta R.T. -0.000 min
 Lab File: BN025631.D
 Acq: 27 May 2023 05:42

Tgt Ion: 82 Resp: 3332

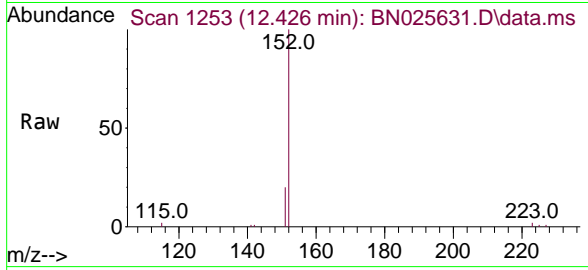
Ion	Ratio	Lower	Upper
82	100		
128	38.0	32.5	48.7
54	56.2	40.6	60.8



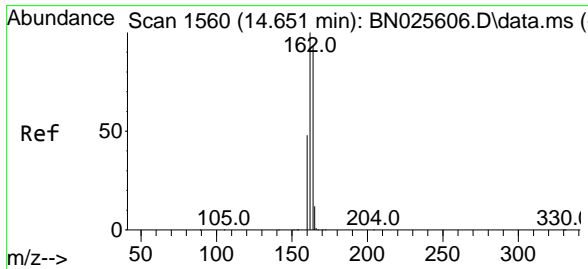
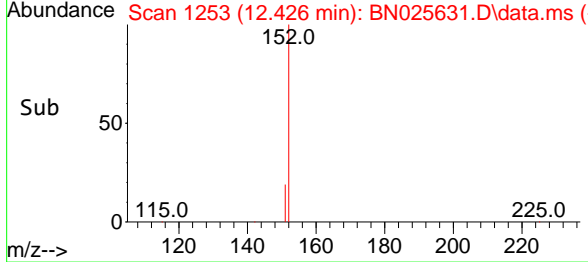
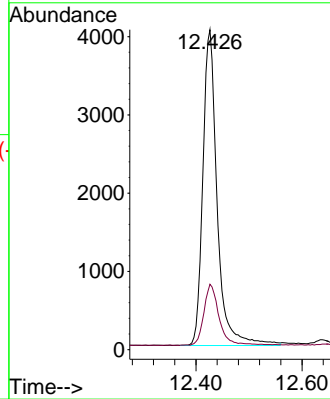


#11
 2-Methylnaphthalene-d10
 Concen: 0.326 ng
 RT: 12.426 min Scan# 11
 Delta R.T. -0.000 min
 Lab File: BN025631.D
 Acq: 27 May 2023 05:42

Instrument :
 BNA_N
 ClientSampleId :
 RE132D6-20230517

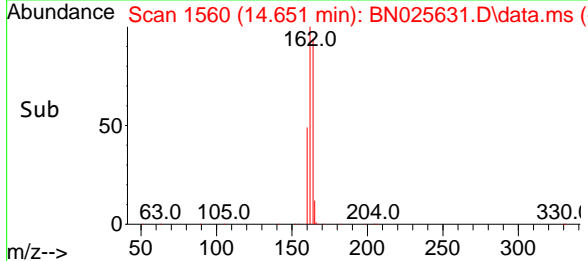
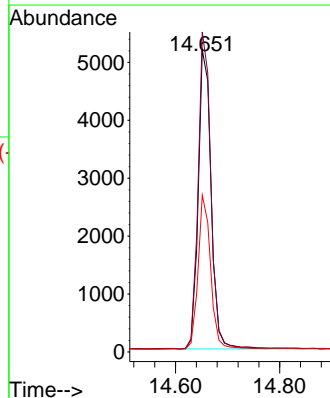
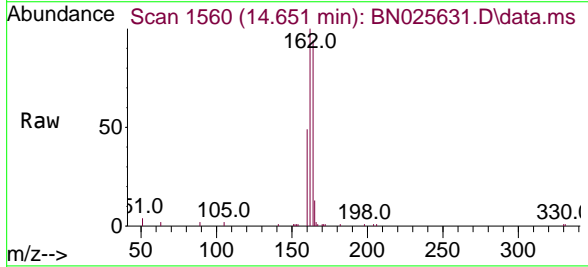


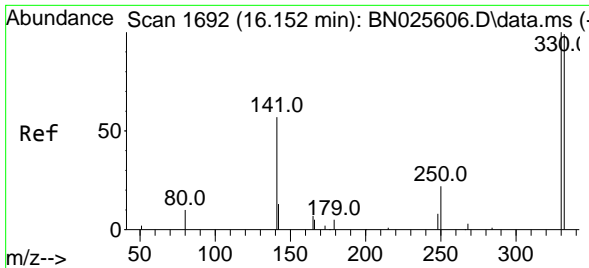
Tgt Ion:152 Resp: 7579
 Ion Ratio Lower Upper
 152 100
 151 20.8 16.1 24.1



#13
 Acenaphthene-d10
 Concen: 0.400 ng
 RT: 14.651 min Scan# 1560
 Delta R.T. -0.000 min
 Lab File: BN025631.D
 Acq: 27 May 2023 05:42

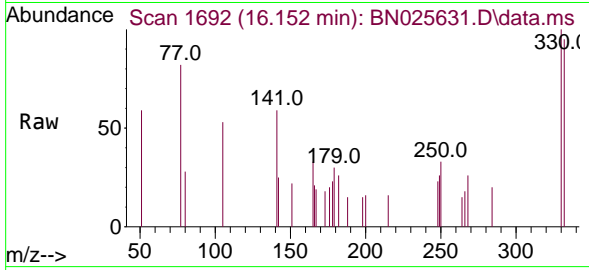
Tgt Ion:164 Resp: 8901
 Ion Ratio Lower Upper
 164 100
 162 106.0 86.4 129.6
 160 51.9 41.9 62.9



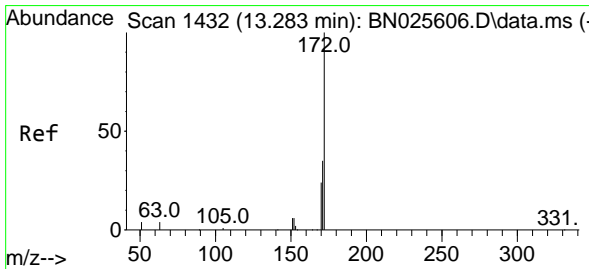
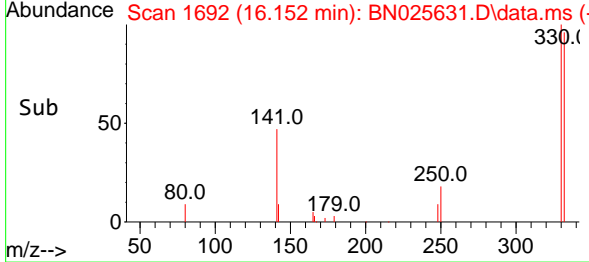
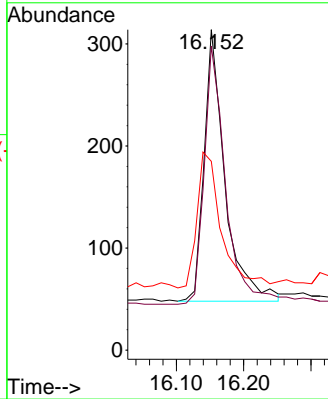


#14
 2,4,6-Tribromophenol
 Concen: 0.318 ng
 RT: 16.152 min Scan# 1692
 Delta R.T. -0.000 min
 Lab File: BN025631.D
 Acq: 27 May 2023 05:42

Instrument :
 BNA_N
 ClientSampleId :
 RE132D6-20230517

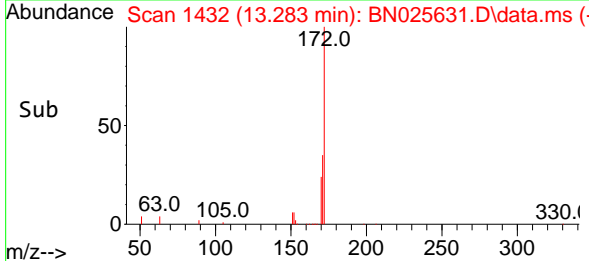
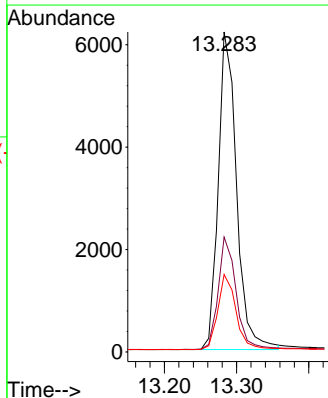
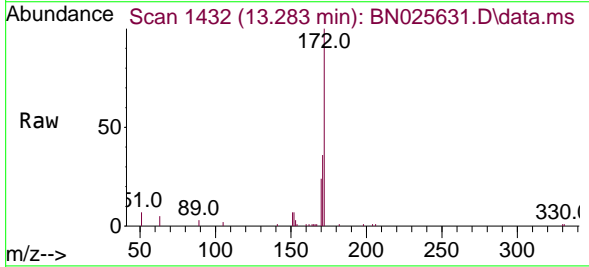


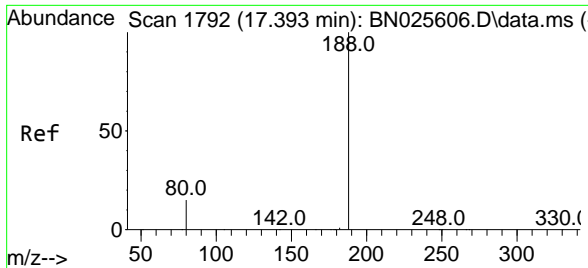
Tgt Ion: 330 Resp: 572
 Ion Ratio Lower Upper
 330 100
 332 97.6 80.0 120.0
 141 58.4 45.8 68.6



#15
 2-Fluorobiphenyl
 Concen: 0.297 ng
 RT: 13.283 min Scan# 1432
 Delta R.T. -0.000 min
 Lab File: BN025631.D
 Acq: 27 May 2023 05:42

Tgt Ion: 172 Resp: 10902
 Ion Ratio Lower Upper
 172 100
 171 35.9 28.6 42.8
 170 24.2 19.7 29.5



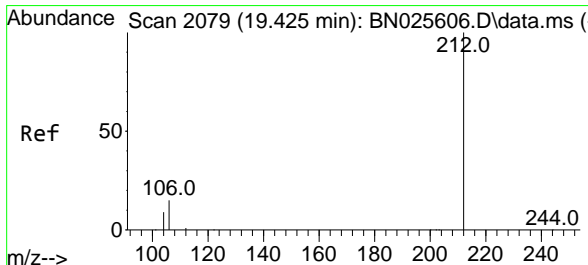
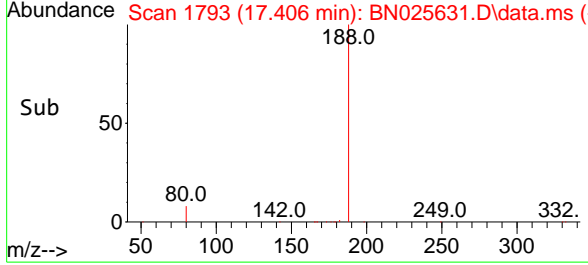
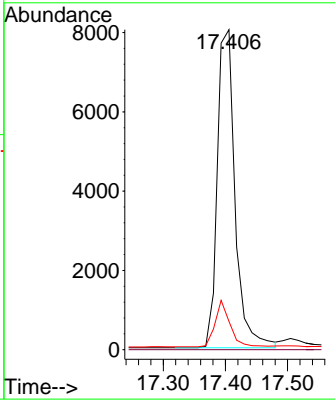
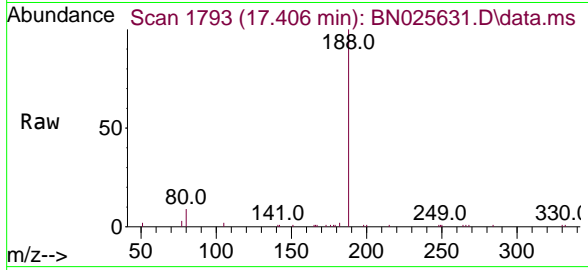


#19
 Phenanthrene-d10
 Concen: 0.400 ng
 RT: 17.406 min Scan# 11
 Delta R.T. 0.012 min
 Lab File: BN025631.D
 Acq: 27 May 2023 05:42

Instrument : BNA_N
 ClientSampleId : RE132D6-20230517

Tgt Ion:188 Resp: 15919

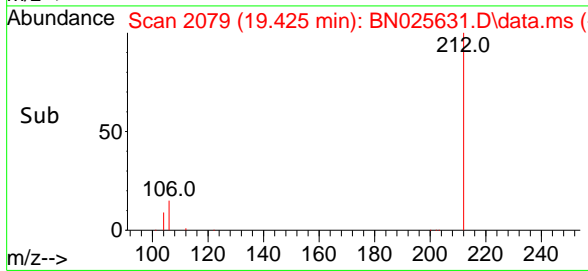
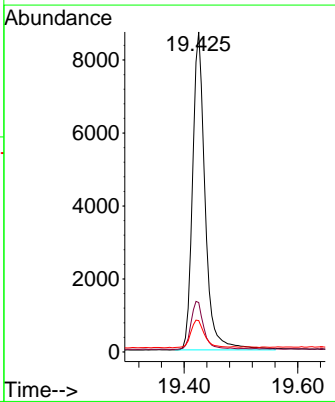
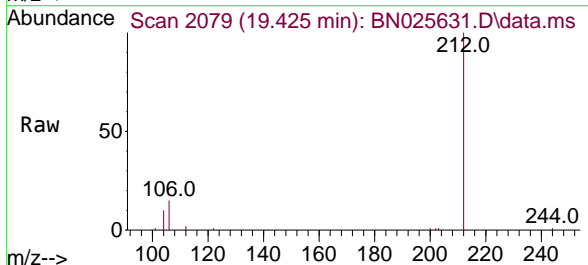
Ion	Ratio	Lower	Upper
188	100		
94	0.0	0.0	0.0
80	8.8	12.2	18.2

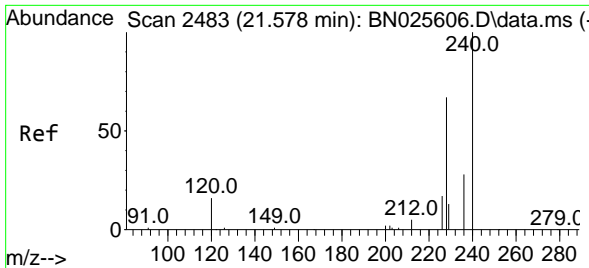


#27
 Fluoranthene-d10
 Concen: 0.370 ng
 RT: 19.425 min Scan# 2079
 Delta R.T. -0.000 min
 Lab File: BN025631.D
 Acq: 27 May 2023 05:42

Tgt Ion:212 Resp: 13337

Ion	Ratio	Lower	Upper
212	100		
106	15.3	12.3	18.5
104	9.5	7.2	10.8



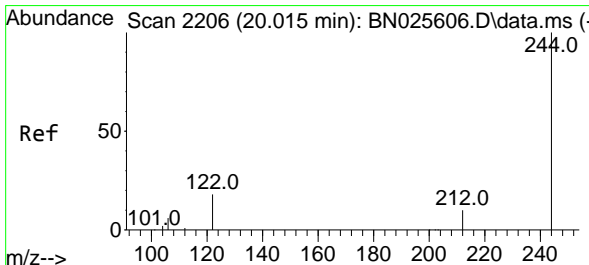
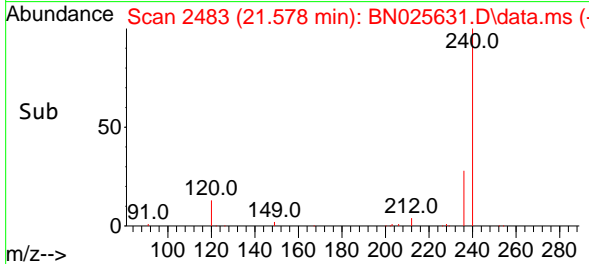
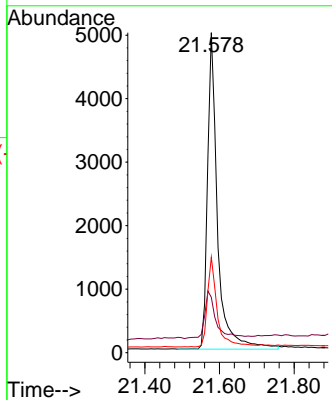
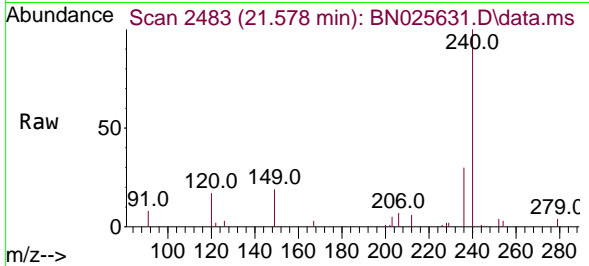


#29
 Chrysene-d12
 Concen: 0.400 ng
 RT: 21.578 min Scan# 2483
 Delta R.T. -0.000 min
 Lab File: BN025631.D
 Acq: 27 May 2023 05:42

Instrument :
 BNA_N
 ClientSampleId :
 RE132D6-20230517

Tgt Ion:240 Resp: 9260

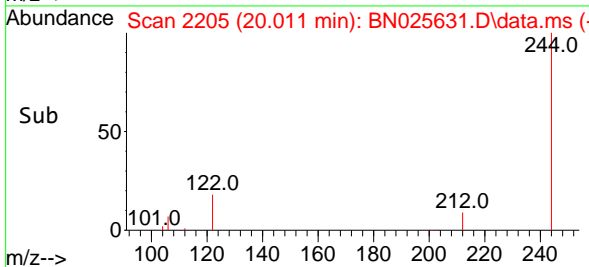
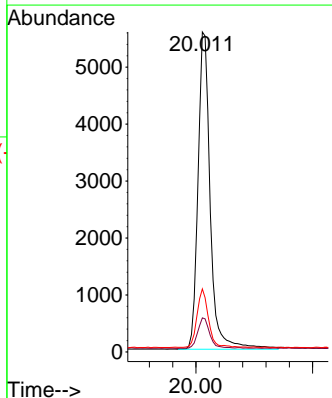
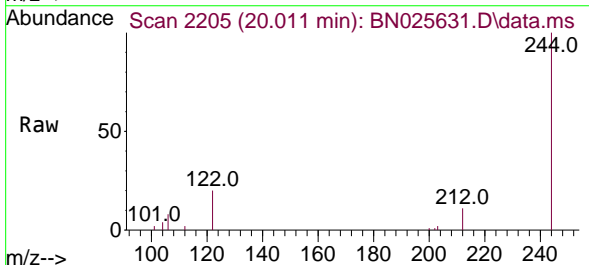
Ion	Ratio	Lower	Upper
240	100		
120	17.3	15.4	23.0
236	29.9	23.2	34.8

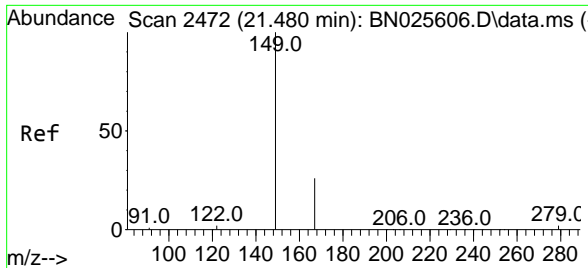


#31
 Terphenyl-d14
 Concen: 0.401 ng
 RT: 20.011 min Scan# 2205
 Delta R.T. -0.005 min
 Lab File: BN025631.D
 Acq: 27 May 2023 05:42

Tgt Ion:244 Resp: 8136

Ion	Ratio	Lower	Upper
244	100		
212	10.7	8.5	12.7
122	19.7	14.9	22.3



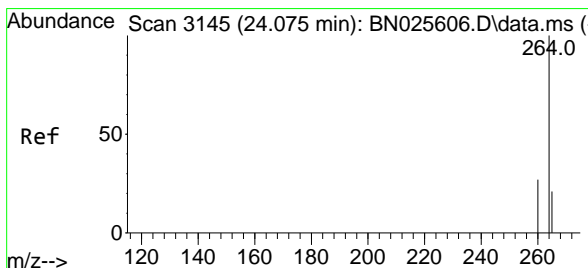
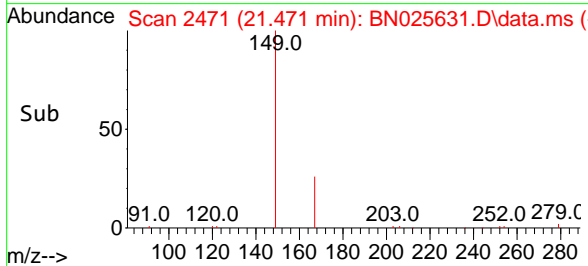
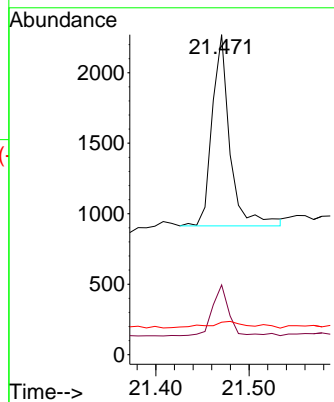
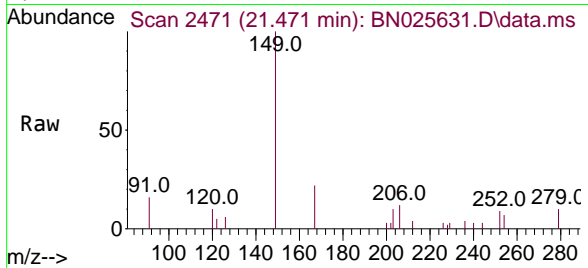


#34
 Bis(2-ethylhexyl)phthalate
 Concen: 0.085 ng
 RT: 21.471 min Scan# 2471
 Delta R.T. -0.009 min
 Lab File: BN025631.D
 Acq: 27 May 2023 05:42

Instrument :
 BNA_N
 ClientSampleId :
 RE132D6-20230517

Tgt Ion:149 Resp: 1790

Ion	Ratio	Lower	Upper
149	100		
167	24.2	20.4	30.6
279	6.4	3.3	4.9



#35
 Perylene-d12
 Concen: 0.400 ng
 RT: 24.057 min Scan# 3139
 Delta R.T. -0.018 min
 Lab File: BN025631.D
 Acq: 27 May 2023 05:42

Tgt Ion:264 Resp: 9095

Ion	Ratio	Lower	Upper
264	100		
260	27.3	22.3	33.5
265	65.4	54.3	81.5

