

Data Path : Z:\SVOASRV\HPCHEM1\BNA N\DATA\BN060419\  
 Data File : BN006078.D  
 Acq On : 04 Jun 2019 23:42  
 Operator : JU/SJ  
 Sample : K2948-06  
 Misc :  
 ALS Vial : 18 Sample Multiplier: 1

Instrument :  
 BNA\_N  
 ClientSampleId :  
 BFH96

Quant Time: Jun 05 01:22:21 2019  
 Quant Method : Z:\SVOASRV\HPCHEM1\BNA\_N\METHODS\SOM-EPA-BN060419MA.M  
 Quant Title : SVOA CALIBRATION  
 QLast Update : Tue Jun 04 17:47:25 2019  
 Response via : Initial Calibration

Internal Standards	R.T.	QIon	Response	Conc	Units	Dev(Min)
1) 1,4-Dichlorobenzene-d4	7.65	152	271042	20.00	ng/ul	0.00
18) Naphthalene-d8	10.43	136	1134257	20.00	ng/ul	0.00
35) Acenaphthene-d10	14.30	164	617176	20.00	ng/ul	0.00
61) Phenanthrene-d10	17.06	188	1302352	20.00	ng/ul	0.00
77) Chrysene-d12	21.27	240	1184598	20.00	ng/ul	0.00
85) Perylene-d12	23.50	264	1331161	20.00	ng/ul	0.00

## System Monitoring Compounds

3) 1,4-Dioxane-d8	3.15	96	34609	5.53	ng/uL	0.00
5) Phenol-d5	6.82	99	617015	28.49	ng/ul	0.00
7) Bis-(2-Chloroethyl)ether-d	6.99	67	374209	30.22	ng/ul	0.00
9) 2-Chlorophenol-d4	7.18	132	510375	29.33	ng/ul	0.00
13) 4-Methylphenol-d8	8.36	113	493513	29.41	ng/ul	0.00
19) Nitrobenzene-d5	8.80	128	246153	30.41	ng/ul	0.00
22) 2-Nitrophenol-d4	9.52	143	275102	30.62	ng/ul	0.00
26) 2,4-Dichlorophenol-d3	10.06	165	468627	28.86	ng/ul	0.00
29) 4-Chloroaniline-d4	10.58	131	664881	34.29	ng/ul	0.00
43) Dimethylphthalate-d6	13.72	166	1383906	31.61	ng/ul	0.00
46) Acenaphthylene-d8	13.99	160	1793546	31.65	ng/ul	0.00
51) 4-Nitrophenol-d4	14.52	143	158583	20.51	ng/ul	0.00
57) Fluorene-d10	15.30	176	1178341	31.85	ng/ul	0.00
62) 4,6-Dinitro-2-methylphenol	15.43	200	78687	10.80	ng/ul	0.00
70) Anthracene-d10	17.16	188	1803464	32.45	ng/ul	0.00
78) Pyrene-d10	19.46	212	1928328	33.69	ng/ul	0.00
89) Benzo(a)pyrene-d12	23.36	264	1924321	32.46	ng/ul	0.00

## Target Compounds

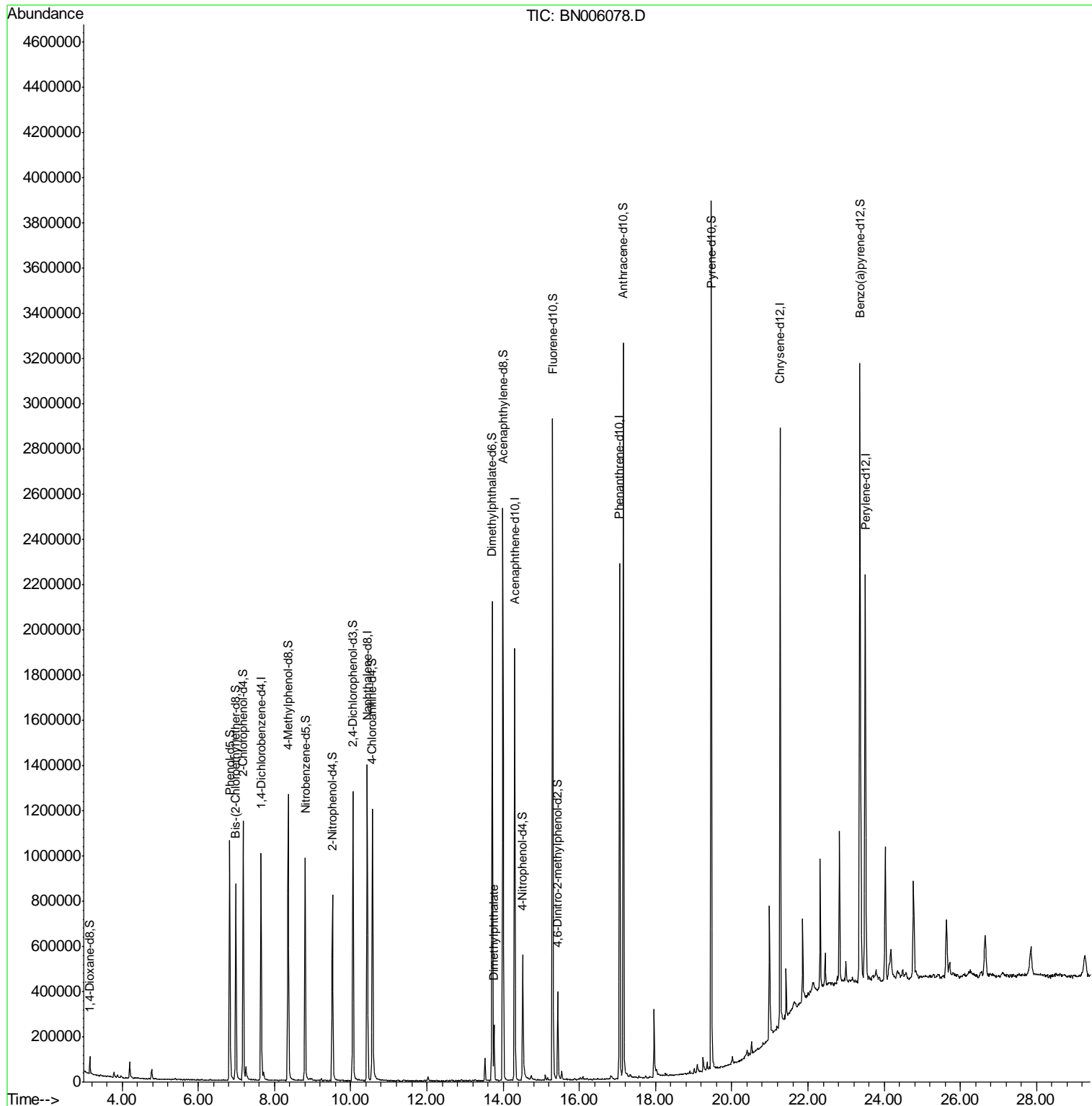
Target Compounds	R.T.	QIon	Response	Conc	Units	Ovalue
44) Dimethylphthalate	13.76	163	146999	3.385	ng/ul	100

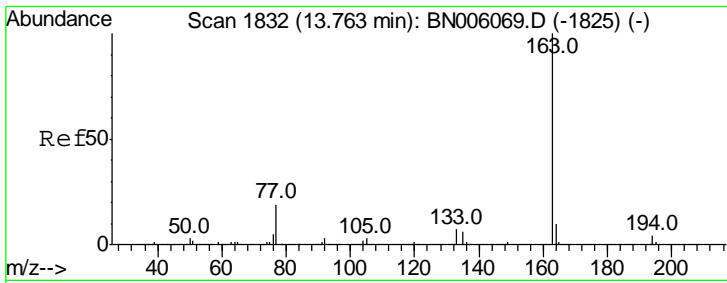
(#) = qualifier out of range (m) = manual integration (+) = signals summed

Data Path : Z:\SVOASRV\HPCHEM1\BNA N\DATA\BN060419\  
 Data File : BN006078.D  
 Acq On : 04 Jun 2019 23:42  
 Operator : JU/SJ  
 Sample : K2948-06  
 Misc :  
 ALS Vial : 18 Sample Multiplier: 1

Instrument :  
 BNA\_N  
 ClientSampled :  
 BFH96

Quant Time: Jun 05 01:22:21 2019  
 Quant Method : Z:\SVOASRV\HPCHEM1\BNA\_N\METHODS\SOM-EPA-BN060419MA.M  
 Quant Title : SVOA CALIBRATION  
 QLast Update : Tue Jun 04 17:47:25 2019  
 Response via : Initial Calibration





#44  
 Dimethylphthalate  
 Concen: 3.385 ng/ul  
 RT: 13.76 min Scan# 1831  
 Delta R.T. -0.01 min  
 Lab File: BN006078.D  
 Acq: 04 Jun 2019 23:42

Instrument :  
 BNA\_N  
 ClientSampled :  
 BFH96

Tot Ion	Ratio	Lower	Upper
163	100		
194	4.4	3.4	5.2
164	10.2	8.2	12.2

