

Data Path : Z:\svoasrv\HPCHEM1\BNA_N\Data\BN060824\
 Data File : BN031854.D
 Acq On : 08 Jun 2024 11:55
 Operator : MA/JU
 Sample : P2634-10
 Misc :
 ALS Vial : 5 Sample Multiplier: 1

Instrument :
 BNA_N
 ClientSampleId :
 BHBX4

Integration Parameters: LSCINT.P

Integrator: RTE
 Smoothing : OFF Filtering: 5
 Sampling : 1 Min Area: 0.1 % of largest Peak
 Start Thrs: 0.2 Max Peaks: 100
 Stop Thrs : 0 Peak Location: TOP

If leading or trailing edge < 100 prefer < Baseline drop else tangent >
 Peak separation: 5

Method : Z:\svoasrv\HPCHEM1\BNA_N\Methods\SFAM-EPA-BN052924.MA.M
 Title : SVOA CALIBRATION

Signal : TIC: BN031854.D\data.ms

peak #	R.T. min	first scan	max scan	last scan	PK TY	peak height	corr. area	corr. % max.	% of total
1	3.187	30	34	45	rVB	145813	220302	1.86%	0.089%
2	3.452	75	79	91	rVB	304779	445057	3.76%	0.179%
3	3.593	99	103	118	rBV	1903319	2860423	24.18%	1.153%
4	5.769	466	473	482	rVB	122298	202566	1.71%	0.082%
5	6.852	645	657	671	rVV	2668322	4533243	38.33%	1.828%
6	7.016	678	685	696	rVB	2158066	3454837	29.21%	1.393%
7	7.205	710	717	725	rBV	2836085	4550358	38.47%	1.835%
8	7.669	787	796	803	rBV	2068232	3339172	28.23%	1.346%
9	7.740	803	808	820	rVB2	99848	187697	1.59%	0.076%
10	8.381	909	917	932	rVV	3220865	5314955	44.94%	2.143%
11	8.828	985	993	1000	rVV	2621354	4344824	36.74%	1.752%
12	9.393	1080	1089	1099	rVB	333929	526876	4.45%	0.212%
13	9.546	1107	1115	1126	rBV	2172752	3695078	31.24%	1.490%
14	10.081	1198	1206	1215	rVB	3251734	5594627	47.30%	2.256%
15	10.451	1260	1269	1275	rBV	2919002	4988894	42.18%	2.012%
16	10.598	1284	1294	1314	rBV	2244660	4062687	34.35%	1.638%
17	11.198	1390	1396	1402	rBV	344837	628003	5.31%	0.253%
18	13.634	1805	1810	1815	rBV	127114	204249	1.73%	0.082%
19	13.734	1821	1827	1832	rBV	5126243	7206452	60.93%	2.906%
20	14.010	1867	1874	1892	rVB2	6167123	10536632	89.09%	4.249%
21	14.316	1916	1926	1932	rBV	4151922	6390923	54.03%	2.577%
22	14.375	1932	1936	1945	rVB2	117906	223286	1.89%	0.090%
23	14.534	1955	1963	1971	rBV	2403339	3892000	32.91%	1.569%
24	14.716	1991	1994	2002	rVB	142779	248196	2.10%	0.100%
25	14.928	2023	2030	2035	rBV3	111246	261738	2.21%	0.106%
26	15.104	2053	2060	2064	rBV5	103823	210861	1.78%	0.085%
27	15.186	2068	2074	2080	rVB2	97907	206769	1.75%	0.083%
28	15.310	2088	2095	2101	rBV	7392289	10871954	91.92%	4.384%
29	15.363	2101	2104	2112	rVB2	161919	262829	2.22%	0.106%
30	15.439	2112	2117	2123	rBV	1649851	2222357	18.79%	0.896%
31	15.657	2149	2154	2160	rBV2	116726	226969	1.92%	0.092%
32	16.039	2213	2219	2225	rBV5	247024	492186	4.16%	0.198%
33	16.369	2267	2275	2280	rBV4	127858	315563	2.67%	0.127%
34	16.598	2306	2314	2318	rBV3	130846	347999	2.94%	0.140%
35	16.722	2330	2335	2342	rVB2	264009	429921	3.63%	0.173%
36	16.880	2358	2362	2371	rVB	266839	428885	3.63%	0.173%

Data Path : Z:\svoasrv\HPCHEM1\BNA_N\Data\BN060824\
 Data File : BN031854.D
 Acq On : 08 Jun 2024 11:55
 Operator : MA/JU
 Sample : P2634-10
 Misc :
 ALS Vial : 5 Sample Multiplier: 1

Instrument :
 BNA_N
 ClientSampleId :
 BHBX4

Integration Parameters: LSCINT.P

Integrator: RTE
 Smoothing : OFF Filtering: 5
 Sampling : 1 Min Area: 0.1 % of largest Peak
 Start Thrs: 0.2 Max Peaks: 100
 Stop Thrs : 0 Peak Location: TOP

If leading or trailing edge < 100 prefer < Baseline drop else tangent >
 Peak separation: 5

Method : Z:\svoasrv\HPCHEM1\BNA_N\Methods\SFAM-EPA-BN052924.MA.M
 Title : SVOA CALIBRATION

37	17.063	2387	2393	2397	rVV	4550314	6756509	57.13%	2.724%
38	17.104	2397	2400	2405	rVV	3835846	5243896	44.34%	2.114%
39	17.163	2405	2410	2414	rVV	7294437	10606266	89.68%	4.277%
40	17.198	2414	2416	2421	rVV	847414	984679	8.33%	0.397%
41	17.251	2421	2425	2431	rVB3	150949	291466	2.46%	0.118%
42	17.375	2443	2446	2451	rVB3	122626	187270	1.58%	0.076%
43	17.469	2455	2462	2467	rBV	323257	561984	4.75%	0.227%
44	17.586	2475	2482	2487	rVV2	123421	266791	2.26%	0.108%
45	17.645	2487	2492	2499	rVB	321202	505330	4.27%	0.204%
46	17.786	2512	2516	2521	rVB	131738	234422	1.98%	0.095%
47	17.939	2537	2542	2544	rVV	1005764	1472223	12.45%	0.594%
48	17.969	2544	2547	2556	rVV2	2323935	4720412	39.91%	1.903%
49	18.033	2556	2558	2560	rVV	146521	179277	1.52%	0.072%
50	18.069	2560	2564	2569	rVV	311672	529366	4.48%	0.213%
51	18.127	2569	2574	2579	rVV2	1242405	2412245	20.40%	0.973%
52	18.169	2579	2581	2587	rVB	764374	940172	7.95%	0.379%
53	18.257	2592	2596	2599	rVV3	185693	272580	2.30%	0.110%
54	18.292	2599	2602	2606	rVV3	186167	308236	2.61%	0.124%
55	18.333	2606	2609	2614	rVB3	189880	281161	2.38%	0.113%
56	18.445	2623	2628	2631	rBV	589512	801467	6.78%	0.323%
57	18.486	2631	2635	2645	rVB2	717713	1128546	9.54%	0.455%
58	18.692	2666	2670	2674	rVV	278553	438637	3.71%	0.177%
59	18.739	2674	2678	2682	rVV	389218	547384	4.63%	0.221%
60	18.780	2682	2685	2689	rVB	264803	332230	2.81%	0.134%
61	18.863	2694	2699	2703	rVV	877055	1393995	11.79%	0.562%
62	18.922	2705	2709	2712	rVV3	385947	714372	6.04%	0.288%
63	18.957	2712	2715	2718	rVB	312910	361538	3.06%	0.146%
64	19.004	2718	2723	2730	rBV3	550467	1167191	9.87%	0.471%
65	19.127	2736	2744	2751	rBV	7041682	10295155	87.04%	4.151%
66	19.192	2752	2755	2758	rBV	200127	240004	2.03%	0.097%
67	19.227	2758	2761	2762	rBV	204683	212402	1.80%	0.086%
68	19.251	2762	2765	2768	rBV2	371784	423373	3.58%	0.171%
69	19.333	2775	2779	2782	rBV2	185211	239529	2.03%	0.097%
70	19.374	2782	2786	2789	rBV	254520	338282	2.86%	0.136%
71	19.463	2795	2801	2804	rBV	7543529	11827411	100.00%	4.769%
72	19.492	2804	2806	2814	rVV	6401854	8633072	72.99%	3.481%
73	19.569	2815	2819	2824	rVB3	485678	751090	6.35%	0.303%
74	19.674	2833	2837	2842	rVB2	283099	447161	3.78%	0.180%
75	19.733	2843	2847	2853	rVB2	369683	580704	4.91%	0.234%
76	19.822	2856	2862	2868	rBV4	665015	1592655	13.47%	0.642%

Data Path : Z:\svoasrv\HPCHEM1\BNA_N\Data\BN060824\
 Data File : BN031854.D
 Acq On : 08 Jun 2024 11:55
 Operator : MA/JU
 Sample : P2634-10
 Misc :
 ALS Vial : 5 Sample Multiplier: 1

Instrument :
 BNA_N
 ClientSampleId :
 BHBX4

Integration Parameters: LSCINT.P

Integrator: RTE
 Smoothing : OFF Filtering: 5
 Sampling : 1 Min Area: 0.1 % of largest Peak
 Start Thrs: 0.2 Max Peaks: 100
 Stop Thrs : 0 Peak Location: TOP

If leading or trailing edge < 100 prefer < Baseline drop else tangent >
 Peak separation: 5

Method : Z:\svoasrv\HPCHEM1\BNA_N\Methods\SFAM-EPA-BN052924.MA.M
 Title : SVOA CALIBRATION

77	19.957	2879	2885	2887	rBV3	534835	995328	8.42%	0.401%
78	19.986	2887	2890	2898	rVB	1064620	1687357	14.27%	0.680%
79	20.092	2904	2908	2912	rBV	615334	778738	6.58%	0.314%
80	20.151	2912	2918	2922	rVV2	857410	1286571	10.88%	0.519%
81	20.286	2938	2941	2945	rBV	620116	748521	6.33%	0.302%
82	20.333	2945	2949	2953	rVB	574157	761332	6.44%	0.307%
83	20.739	3014	3018	3024	rBV	817347	1169455	9.89%	0.472%
84	20.910	3044	3047	3051	rVB3	627771	887356	7.50%	0.358%
85	20.951	3051	3054	3057	rVV	645121	739245	6.25%	0.298%
86	20.986	3057	3060	3067	rVV3	1964818	3031843	25.63%	1.222%
87	21.051	3068	3071	3084	rVB	804084	1551506	13.12%	0.626%
88	21.298	3106	3113	3118	rBV4	5092007	11697020	98.90%	4.716%
89	21.345	3118	3121	3132	rVB	3511255	5247143	44.36%	2.116%
90	21.486	3141	3145	3152	rBV3	481826	1030801	8.72%	0.416%
91	21.974	3225	3228	3234	rVB	696483	1112403	9.41%	0.449%
92	22.045	3236	3240	3250	rVV4	571479	1300995	11.00%	0.525%
93	22.227	3267	3271	3274	rBV	365359	520629	4.40%	0.210%
94	22.668	3341	3346	3356	rVB3	1324740	2493993	21.09%	1.006%
95	23.315	3449	3456	3463	rBV2	2557132	7589486	64.17%	3.060%
96	23.974	3562	3568	3573	rBV	1298645	3068187	25.94%	1.237%
97	24.051	3574	3581	3587	rVV3	3810661	9779082	82.68%	3.943%
98	24.110	3587	3591	3603	rVB	2387257	5382656	45.51%	2.170%
99	24.251	3606	3615	3622	rBV	2777752	7222404	61.06%	2.912%
100	27.551	4170	4176	4199	rVB2	1091882	4774974	40.37%	1.925%

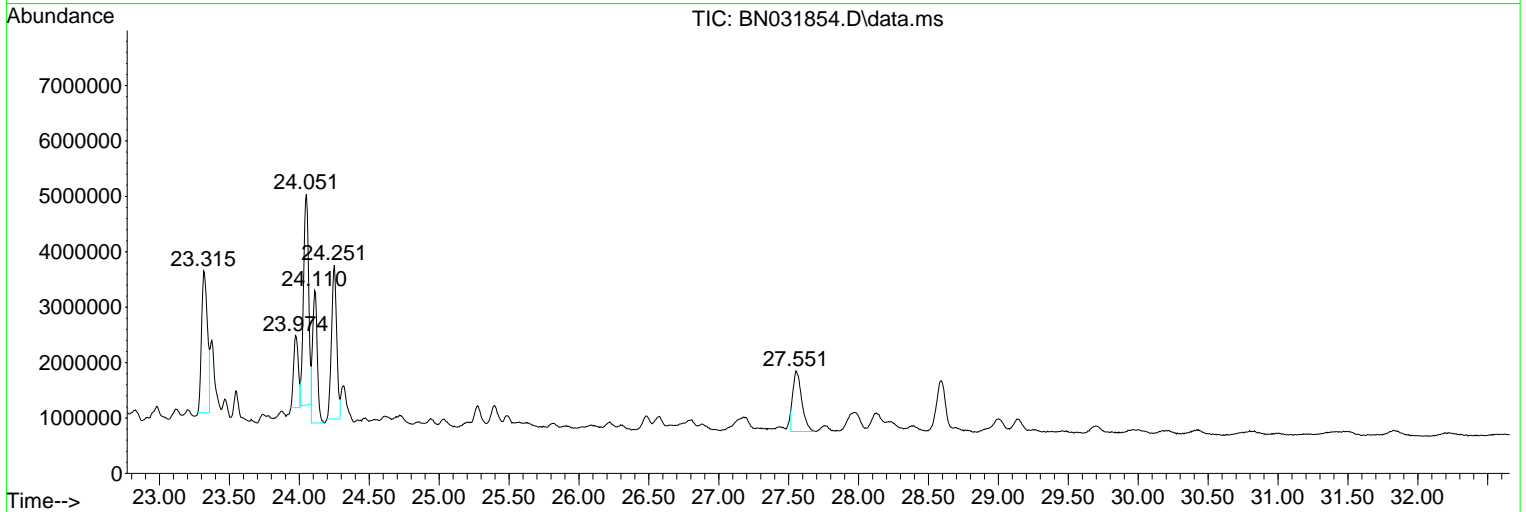
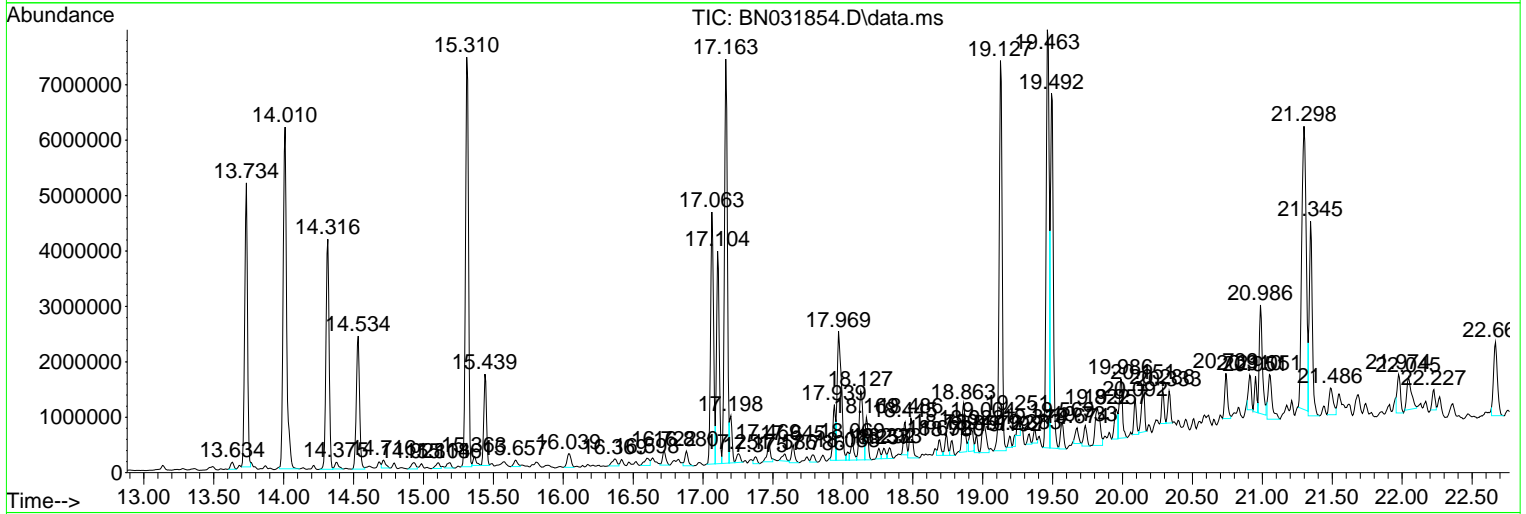
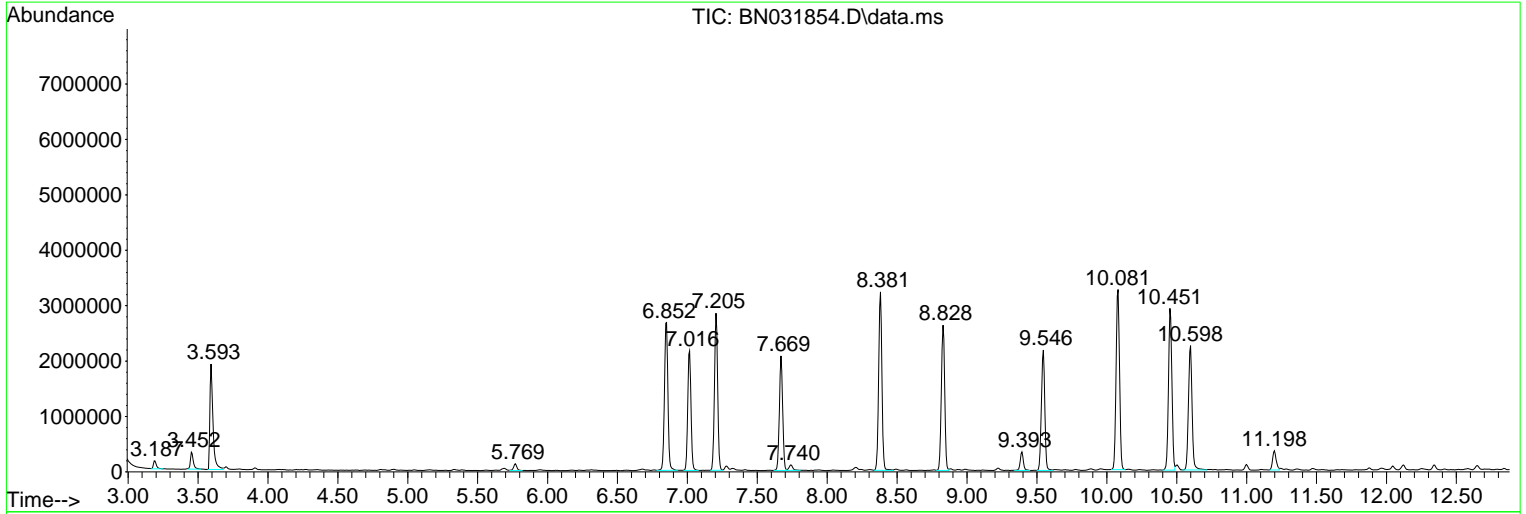
Sum of corrected areas: 248006876

Data Path : Z:\svoasrv\HPCHEM1\BNA_N\Data\BN060824\
 Data File : BN031854.D
 Acq On : 08 Jun 2024 11:55
 Operator : MA/JU
 Sample : P2634-10
 Misc :
 ALS Vial : 5 Sample Multiplier: 1

Instrument :
 BNA_N
 ClientSampleId :
 BHBX4

Quant Method : Z:\svoasrv\HPCHEM1\BNA_N\Methods\SFAM-EPA-BN052924.MA.M
 Quant Title : SVOA CALIBRATION

TIC Library : C:\Database\NIST20.L
 TIC Integration Parameters: LSCINT.P



Data Path : Z:\svoasrv\HPCHEM1\BNA_N\Data\BN060824\
 Data File : BN031854.D
 Acq On : 08 Jun 2024 11:55
 Operator : MA/JU
 Sample : P2634-10
 Misc :
 ALS Vial : 5 Sample Multiplier: 1

Instrument :
 BNA_N
 ClientSampleId :
 BHBX4

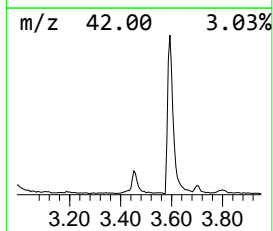
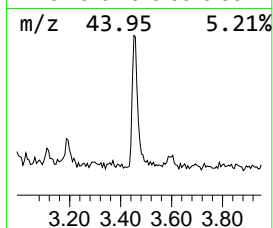
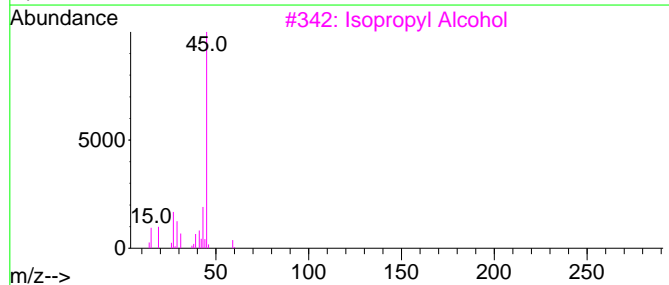
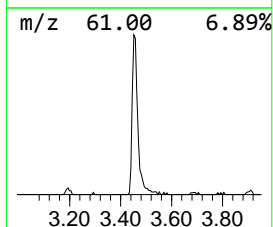
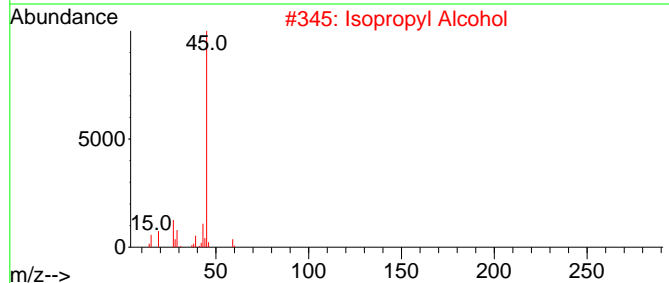
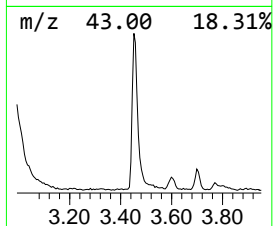
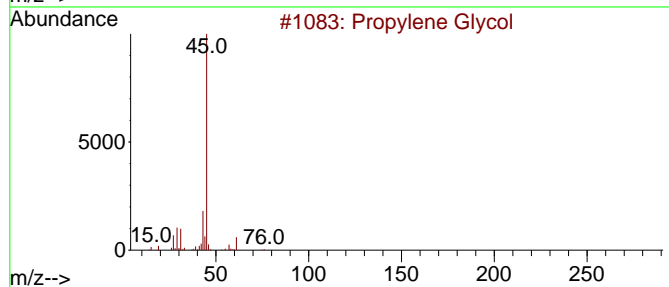
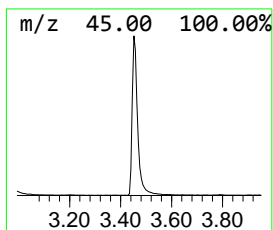
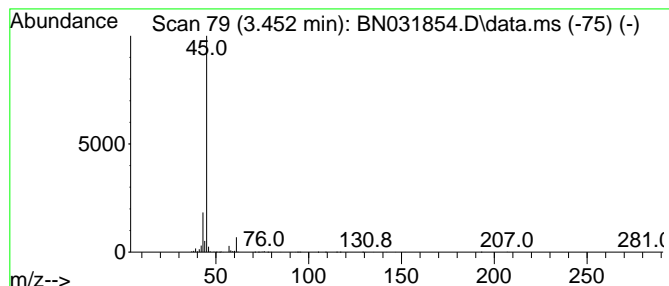
Quant Method : Z:\svoasrv\HPCHEM1\BNA_N\Methods\SFAM-EPA-BN052924.MA.M
 Quant Title : SVOA CALIBRATION

TIC Library : C:\Database\NIST20.L
 TIC Integration Parameters: LSCINT.P

 Peak Number 1 Propylene Glycol Concentration Rank 13

R.T.	EstConc	Area	Relative to ISTD	R.T.
3.452	2.67 ng/ul	445057	1,4-Dichlorobenzene-d4	7.669

Hit#	of	5	Tentative ID	MW	MolForm	CAS#	Qual
1			Propylene Glycol	76	C3H8O2	000057-55-6	90
2			Isopropyl Alcohol	60	C3H8O	000067-63-0	56
3			Isopropyl Alcohol	60	C3H8O	000067-63-0	40
4			Propanoic acid, 2-hydroxy-, meth...	104	C4H8O3	000547-64-8	40
5			R-(-)-1,2-propanediol	76	C3H8O2	004254-14-2	37



Data Path : Z:\svoasrv\HPCHEM1\BNA_N\Data\BN060824\
 Data File : BN031854.D
 Acq On : 08 Jun 2024 11:55
 Operator : MA/JU
 Sample : P2634-10
 Misc :
 ALS Vial : 5 Sample Multiplier: 1

Instrument :
 BNA_N
 ClientSampleId :
 BHBX4

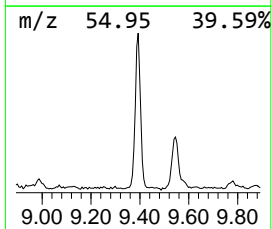
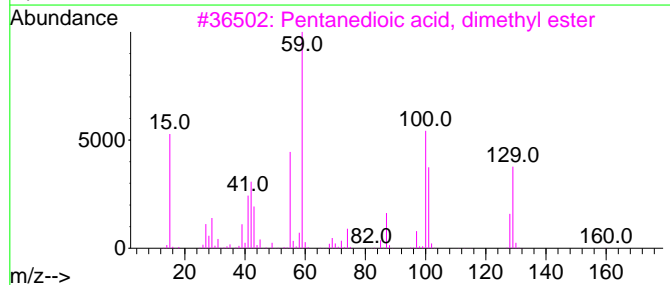
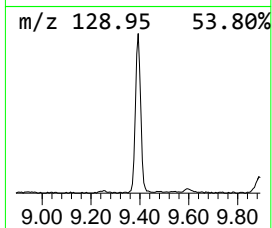
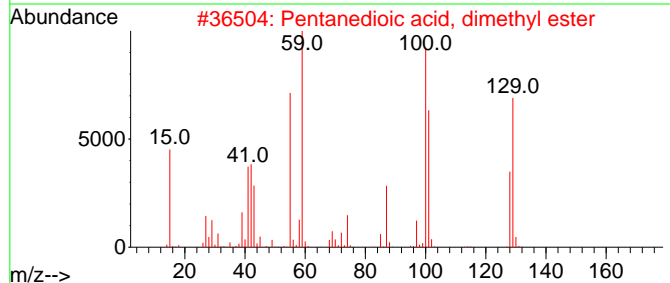
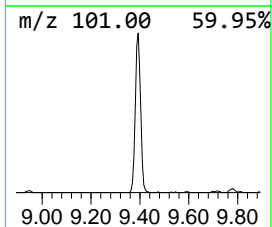
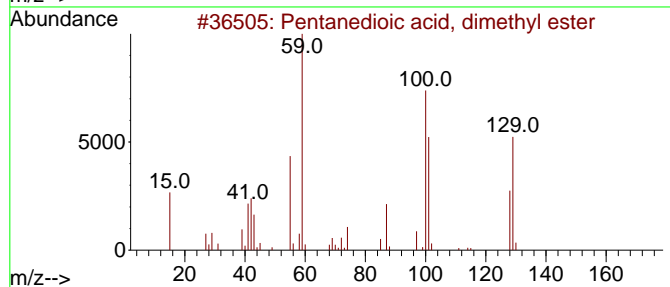
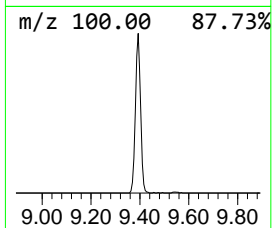
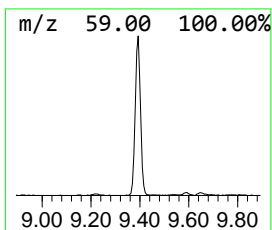
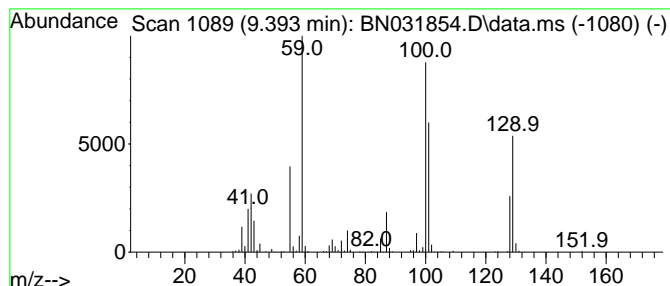
Quant Method : Z:\svoasrv\HPCHEM1\BNA_N\Methods\SFAM-EPA-BN052924.MA.M
 Quant Title : SVOA CALIBRATION

TIC Library : C:\Database\NIST20.L
 TIC Integration Parameters: LSCINT.P

 Peak Number 2 Pentanedioic acid, dimethyl... Concentration Rank 20

R.T.	EstConc	Area	Relative to ISTD	R.T.
9.393	2.11 ng/ul	526876	Naphthalene-d8	10.451

Hit#	of 5	Tentative ID	MW	MolForm	CAS#	Qual
1		Pentanedioic acid, dimethyl ester	160	C7H12O4	001119-40-0	91
2		Pentanedioic acid, dimethyl ester	160	C7H12O4	001119-40-0	83
3		Pentanedioic acid, dimethyl ester	160	C7H12O4	001119-40-0	64
4		Pentanedioic acid, dimethyl ester	160	C7H12O4	001119-40-0	53
5		Butanedioic acid, methyl-, dimet...	160	C7H12O4	001604-11-1	50



Data Path : Z:\svoasrv\HPCHEM1\BNA_N\Data\BN060824\
 Data File : BN031854.D
 Acq On : 08 Jun 2024 11:55
 Operator : MA/JU
 Sample : P2634-10
 Misc :
 ALS Vial : 5 Sample Multiplier: 1

Instrument :
 BNA_N
 ClientSampleId :
 BHBX4

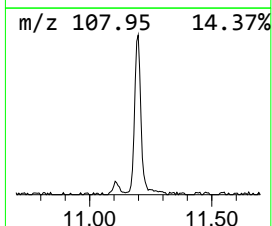
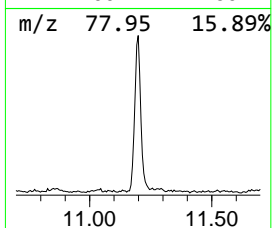
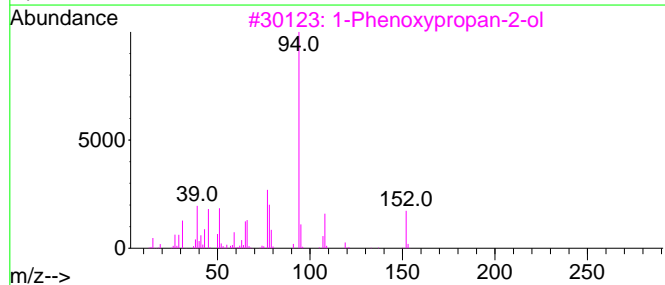
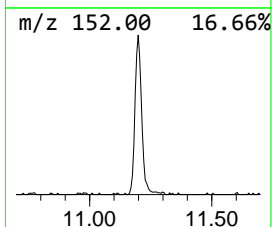
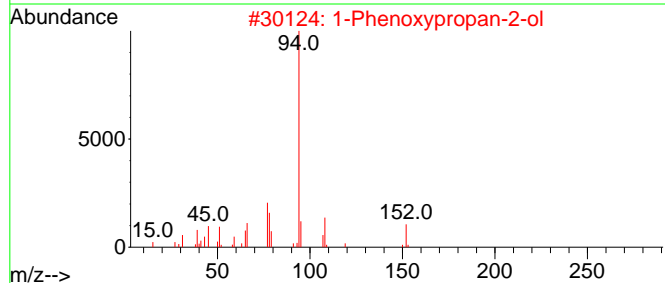
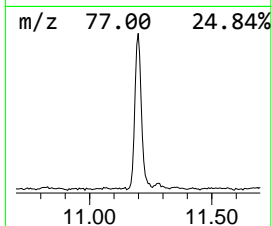
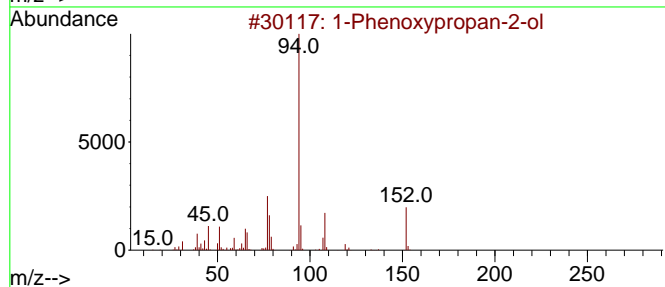
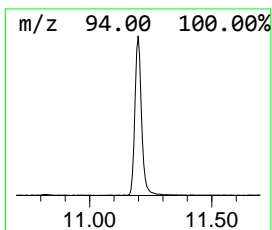
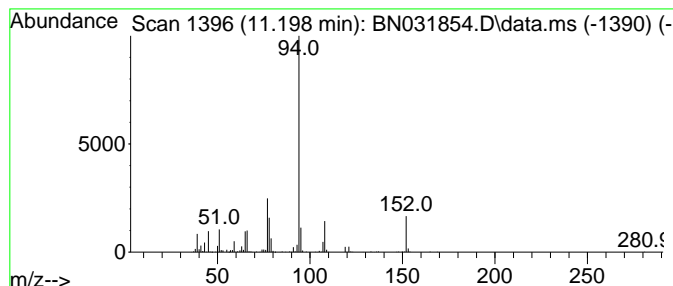
Quant Method : Z:\svoasrv\HPCHEM1\BNA_N\Methods\SFAM-EPA-BN052924.MA.M
 Quant Title : SVOA CALIBRATION

TIC Library : C:\Database\NIST20.L
 TIC Integration Parameters: LSCINT.P

 Peak Number 3 1-Phenoxypropan-2-ol Concentration Rank 15

R.T.	EstConc	Area	Relative to ISTD	R.T.
11.198	2.52 ng/ul	628003	Naphthalene-d8	10.451

Hit#	of	5	Tentative ID	MW	MolForm	CAS#	Qual
1			1-Phenoxypropan-2-ol	152	C9H12O2	000770-35-4	96
2			1-Phenoxypropan-2-ol	152	C9H12O2	000770-35-4	95
3			1-Phenoxypropan-2-ol	152	C9H12O2	000770-35-4	94
4			1-Propanol, 3-phenoxy-	152	C9H12O2	006180-61-6	83
5			Ethanol, 2-phenoxy-	138	C8H10O2	000122-99-6	64



Data Path : Z:\svoasrv\HPCHEM1\BNA_N\Data\BN060824\
 Data File : BN031854.D
 Acq On : 08 Jun 2024 11:55
 Operator : MA/JU
 Sample : P2634-10
 Misc :
 ALS Vial : 5 Sample Multiplier: 1

Instrument :
 BNA_N
 ClientSampleId :
 BHBX4

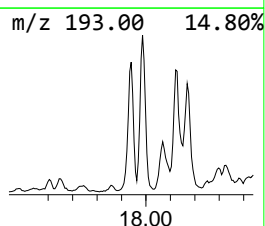
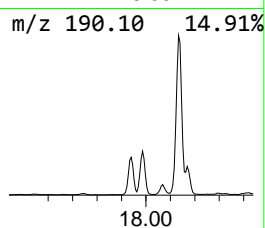
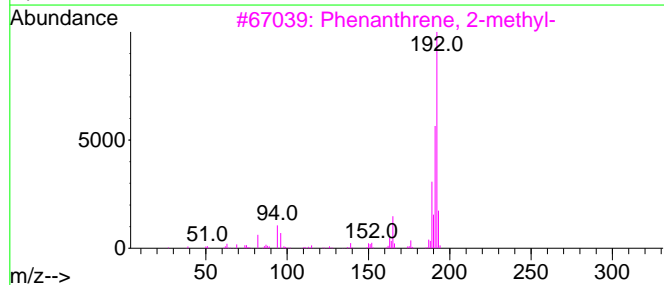
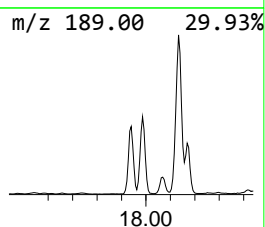
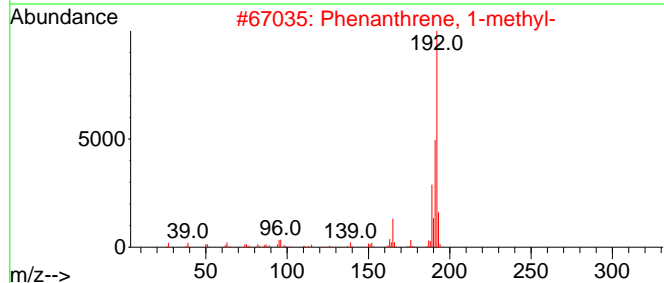
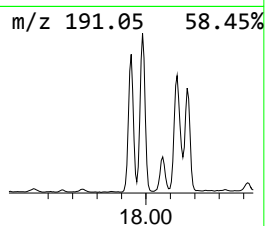
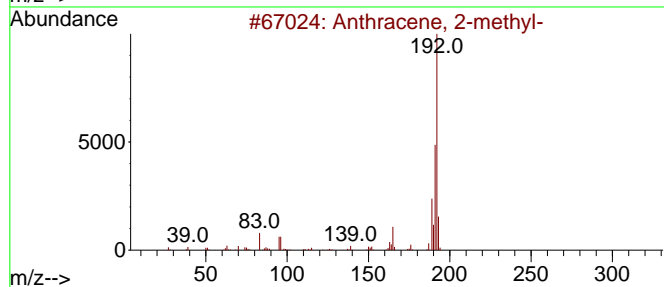
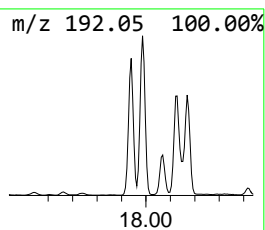
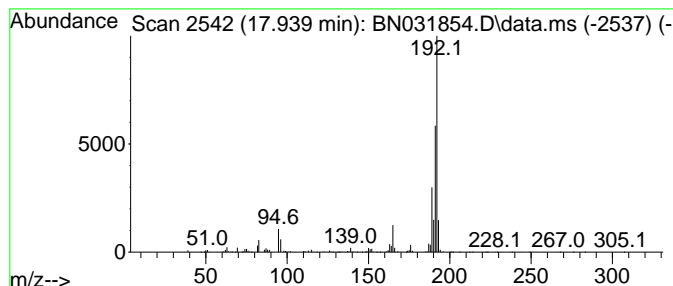
Quant Method : Z:\svoasrv\HPCHEM1\BNA_N\Methods\SFAM-EPA-BN052924.MA.M
 Quant Title : SVOA CALIBRATION

TIC Library : C:\Database\NIST20.L
 TIC Integration Parameters: LSCINT.P

 Peak Number 4 Anthracene, 2-methyl- Concentration Rank 5

R.T.	EstConc	Area	Relative to ISTD	R.T.
17.939	4.36 ng/ul	1472220	Phenanthrene-d10	17.063

Hit#	of	5	Tentative ID	MW	MolForm	CAS#	Qual
1			Anthracene, 2-methyl-	192	C15H12	000613-12-7	96
2			Phenanthrene, 1-methyl-	192	C15H12	000832-69-9	96
3			Phenanthrene, 2-methyl-	192	C15H12	002531-84-2	95
4			1H-Cyclopropa[1]phenanthrene,1a,...	192	C15H12	000949-41-7	95
5			1H-Indene, 2-phenyl-	192	C15H12	004505-48-0	95



Data Path : Z:\svoasrv\HPCHEM1\BNA_N\Data\BN060824\
 Data File : BN031854.D
 Acq On : 08 Jun 2024 11:55
 Operator : MA/JU
 Sample : P2634-10
 Misc :
 ALS Vial : 5 Sample Multiplier: 1

Instrument :
 BNA_N
 ClientSampleId :
 BHBX4

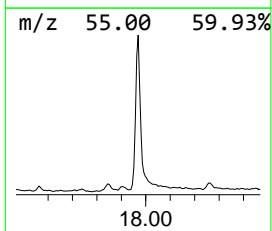
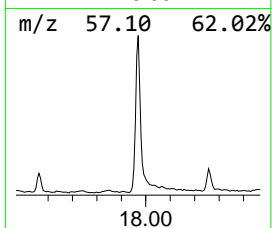
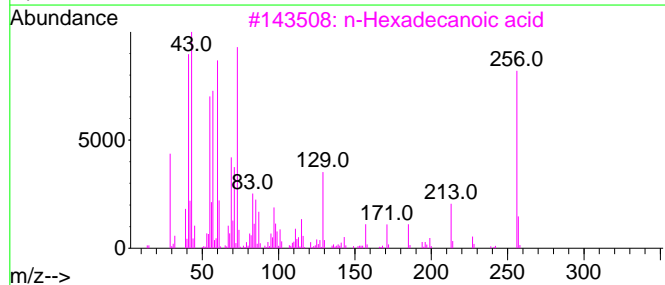
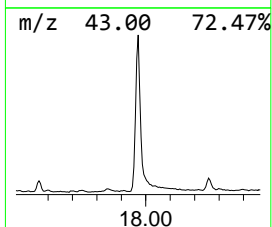
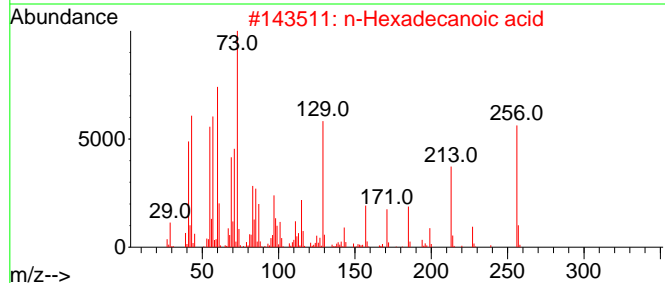
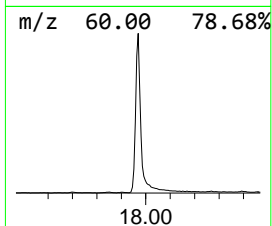
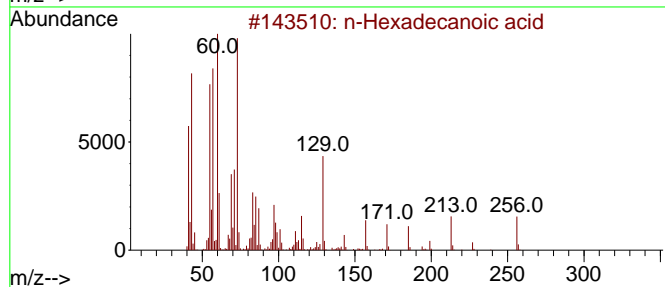
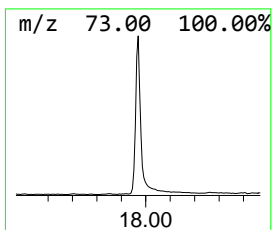
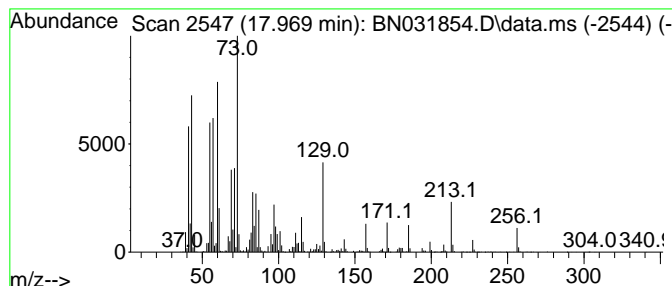
Quant Method : Z:\svoasrv\HPCHEM1\BNA_N\Methods\SFAM-EPA-BN052924.MA.M
 Quant Title : SVOA CALIBRATION

TIC Library : C:\Database\NIST20.L
 TIC Integration Parameters: LSCINT.P

 Peak Number 5 n-Hexadecanoic acid Concentration Rank 1

R.T.	EstConc	Area	Relative to ISTD	R.T.
17.969	13.97 ng/ul	4720410	Phenanthrene-d10	17.063

Hit#	of 5	Tentative ID	MW	MolForm	CAS#	Qual
1		n-Hexadecanoic acid	256	C16H32O2	000057-10-3	99
2		n-Hexadecanoic acid	256	C16H32O2	000057-10-3	99
3		n-Hexadecanoic acid	256	C16H32O2	000057-10-3	99
4		n-Hexadecanoic acid	256	C16H32O2	000057-10-3	98
5		Tridecanoic acid	214	C13H26O2	000638-53-9	94



Data Path : Z:\svoasrv\HPCHEM1\BNA_N\Data\BN060824\
 Data File : BN031854.D
 Acq On : 08 Jun 2024 11:55
 Operator : MA/JU
 Sample : P2634-10
 Misc :
 ALS Vial : 5 Sample Multiplier: 1

Instrument :
 BNA_N
 ClientSampleId :
 BHBX4

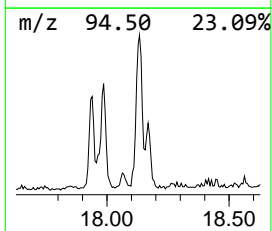
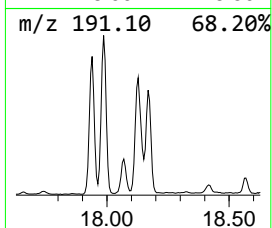
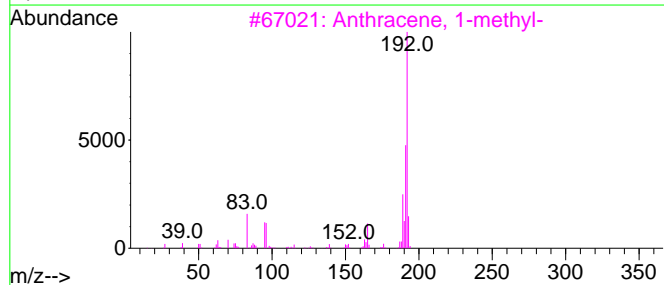
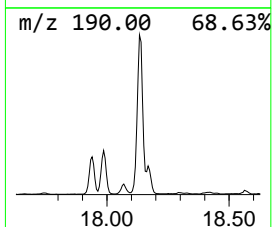
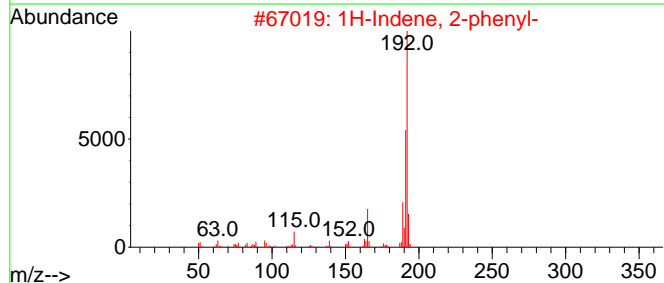
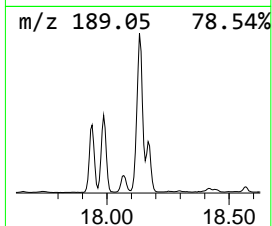
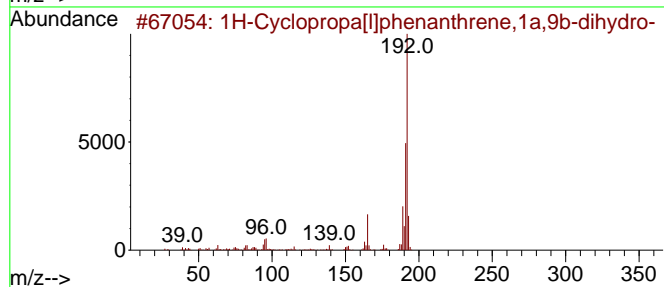
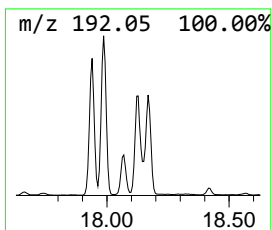
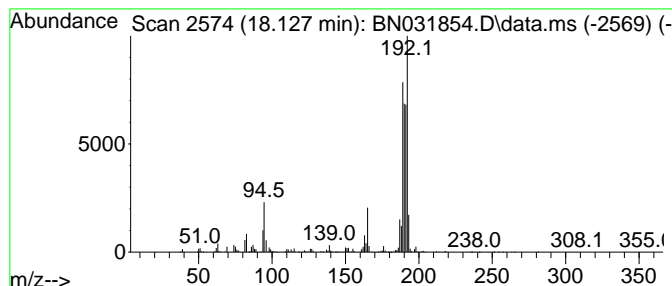
Quant Method : Z:\svoasrv\HPCHEM1\BNA_N\Methods\SFAM-EPA-BN052924.MA.M
 Quant Title : SVOA CALIBRATION

TIC Library : C:\Database\NIST20.L
 TIC Integration Parameters: LSCINT.P

 Peak Number 6 1H-Cyclopropa[1]phenanthren... Concentration Rank 3

R.T.	EstConc	Area	Relative to ISTD	R.T.
18.128	7.14 ng/ul	2412250	Phenanthrene-d10	17.063

Hit#	of	5	Tentative ID	MW	MolForm	CAS#	Qual
1			1H-Cyclopropa[1]phenanthrene,1a,...	192	C15H12	000949-41-7	89
2			1H-Indene, 2-phenyl-	192	C15H12	004505-48-0	50
3			Anthracene, 1-methyl-	192	C15H12	000610-48-0	50
4			Naphtho[2,3-b]norbornadiene	192	C15H12	107426-38-0	50
5			Phenanthrene, 1-methyl-	192	C15H12	000832-69-9	50



Data Path : Z:\svoasrv\HPCHEM1\BNA_N\Data\BN060824\
 Data File : BN031854.D
 Acq On : 08 Jun 2024 11:55
 Operator : MA/JU
 Sample : P2634-10
 Misc :
 ALS Vial : 5 Sample Multiplier: 1

Instrument :
 BNA_N
 ClientSampleId :
 BHBX4

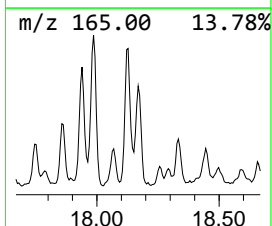
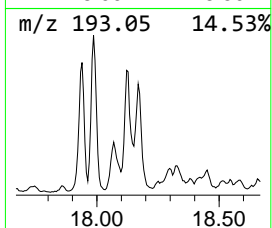
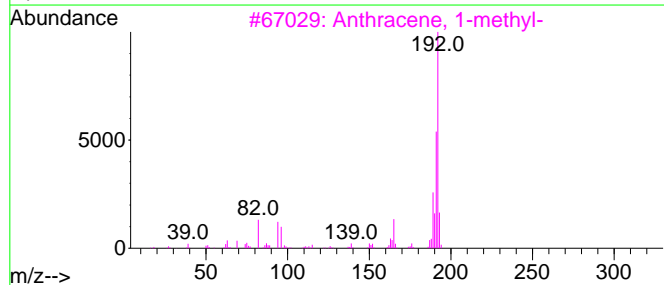
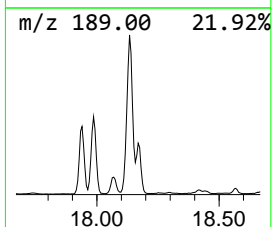
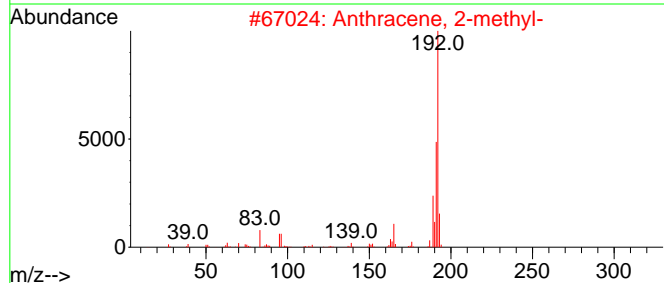
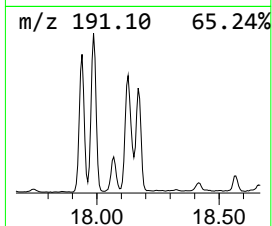
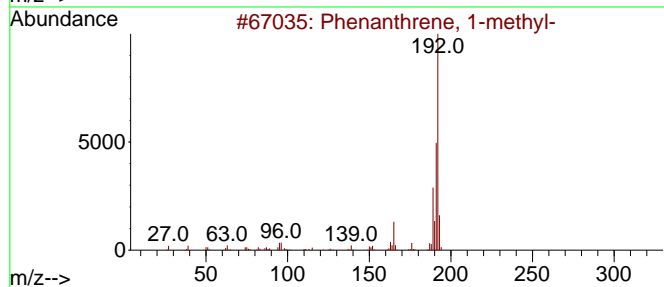
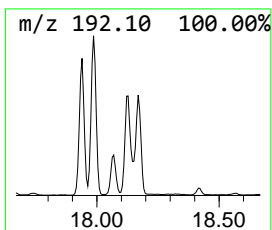
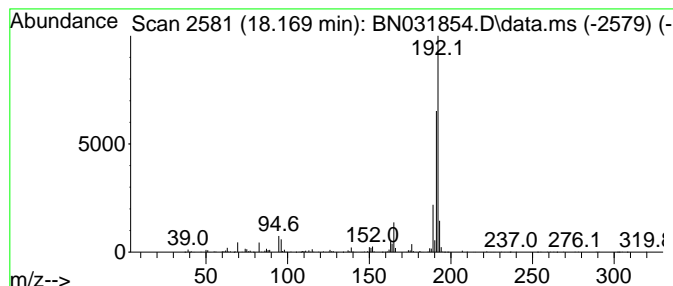
Quant Method : Z:\svoasrv\HPCHEM1\BNA_N\Methods\SFAM-EPA-BN052924.MA.M
 Quant Title : SVOA CALIBRATION

TIC Library : C:\Database\NIST20.L
 TIC Integration Parameters: LSCINT.P

 Peak Number 7 Phenanthrene, 1-methyl- Concentration Rank 11

R.T.	EstConc	Area	Relative to ISTD	R.T.
18.169	2.78 ng/ul	940172	Phenanthrene-d10	17.063

Hit#	of	5	Tentative ID	MW	MolForm	CAS#	Qual
1			Phenanthrene, 1-methyl-	192	C15H12	000832-69-9	91
2			Anthracene, 2-methyl-	192	C15H12	000613-12-7	91
3			Anthracene, 1-methyl-	192	C15H12	000610-48-0	87
4			Anthracene, 9-methyl-	192	C15H12	000779-02-2	83
5			Anthracene, 2-methyl-	192	C15H12	000613-12-7	83



Data Path : Z:\svoasrv\HPCHEM1\BNA_N\Data\BN060824\
 Data File : BN031854.D
 Acq On : 08 Jun 2024 11:55
 Operator : MA/JU
 Sample : P2634-10
 Misc :
 ALS Vial : 5 Sample Multiplier: 1

Instrument :
 BNA_N
 ClientSampleId :
 BHBX4

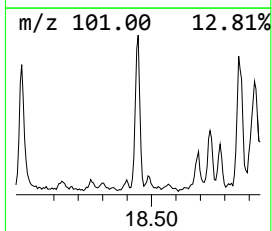
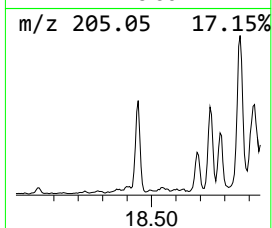
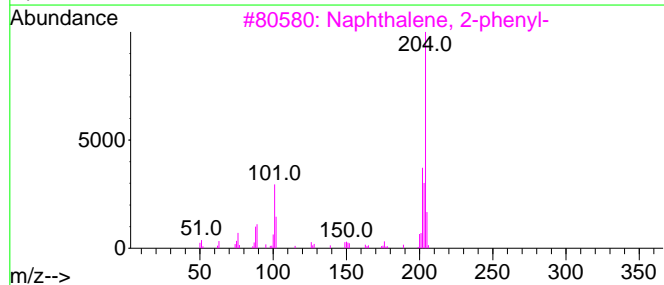
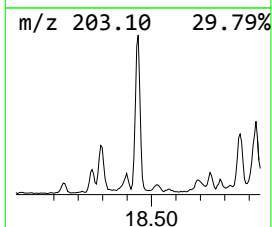
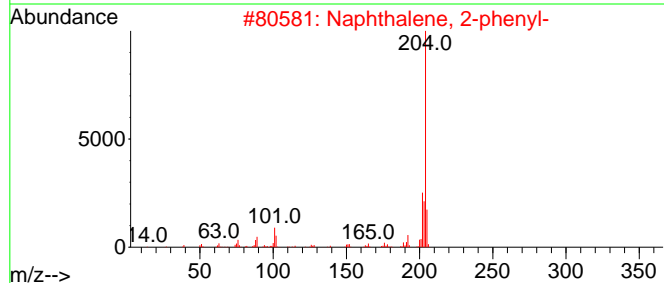
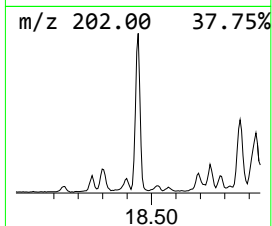
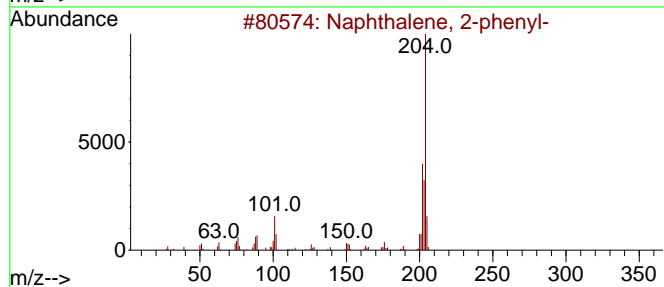
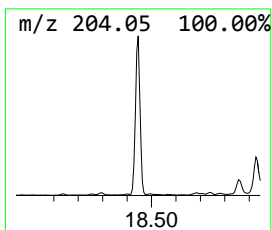
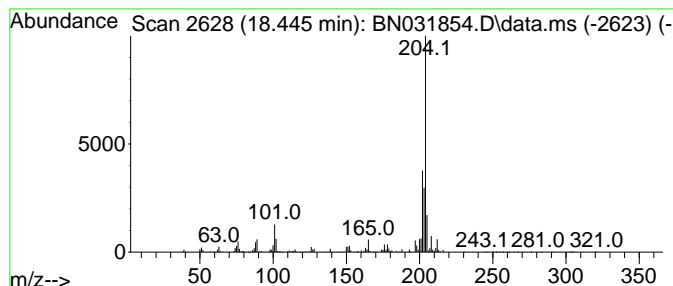
Quant Method : Z:\svoasrv\HPCHEM1\BNA_N\Methods\SFAM-EPA-BN052924.MA.M
 Quant Title : SVOA CALIBRATION

TIC Library : C:\Database\NIST20.L
 TIC Integration Parameters: LSCINT.P

 Peak Number 8 Naphthalene, 2-phenyl- Concentration Rank 16

R.T.	EstConc	Area	Relative to ISTD	R.T.
18.445	2.37 ng/ul	801467	Phenanthrene-d10	17.063

Hit#	of	5	Tentative ID	MW	MolForm	CAS#	Qual
1			Naphthalene, 2-phenyl-	204	C16H12	000612-94-2	89
2			Naphthalene, 2-phenyl-	204	C16H12	000612-94-2	81
3			Naphthalene, 2-phenyl-	204	C16H12	000612-94-2	76
4			Tricyclo[8.2.2.2(4,7)]hexadeca-2...	204	C16H12	006572-60-7	72
5			Naphthalene, 2-phenyl-	204	C16H12	000612-94-2	70



Data Path : Z:\svoasrv\HPCHEM1\BNA_N\Data\BN060824\
 Data File : BN031854.D
 Acq On : 08 Jun 2024 11:55
 Operator : MA/JU
 Sample : P2634-10
 Misc :
 ALS Vial : 5 Sample Multiplier: 1

Instrument :
 BNA_N
 ClientSampleId :
 BHBX4

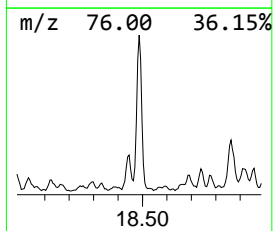
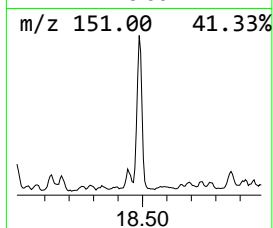
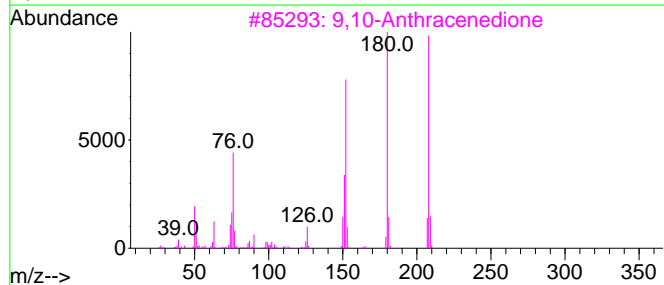
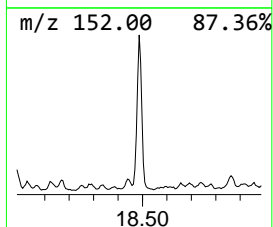
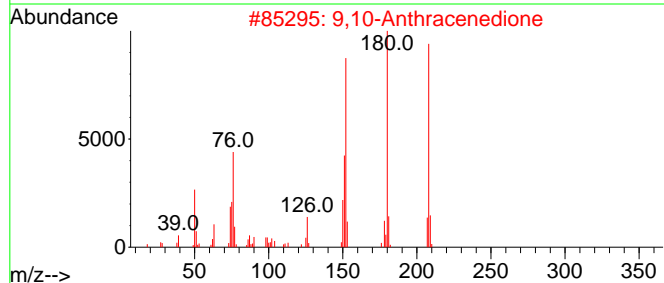
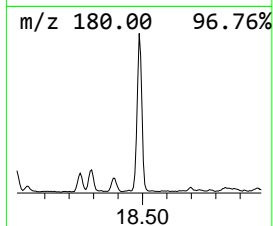
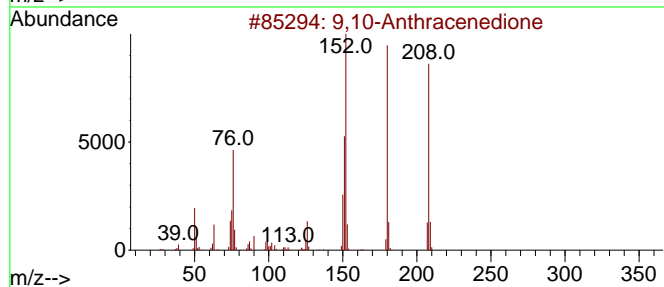
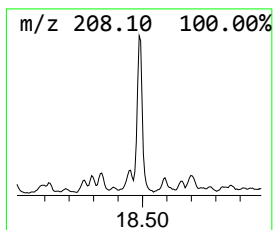
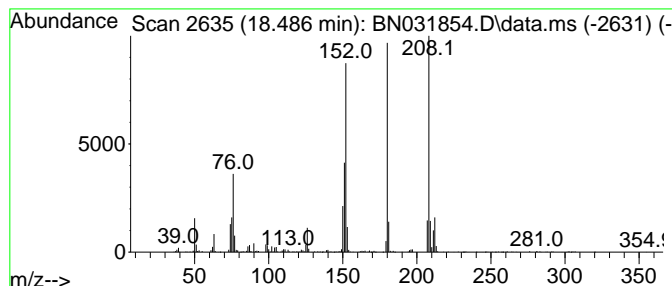
Quant Method : Z:\svoasrv\HPCHEM1\BNA_N\Methods\SFAM-EPA-BN052924.MA.M
 Quant Title : SVOA CALIBRATION

TIC Library : C:\Database\NIST20.L
 TIC Integration Parameters: LSCINT.P

 Peak Number 9 9,10-Anthracenedione Concentration Rank 9

R.T.	EstConc	Area	Relative to ISTD	R.T.
18.486	3.34 ng/ul	1128550	Phenanthrene-d10	17.063

Hit#	of	5	Tentative ID	MW	MolForm	CAS#	Qual
1	9,10-Anthracenedione	208	C14H8O2	000084-65-1	98		
2	9,10-Anthracenedione	208	C14H8O2	000084-65-1	98		
3	9,10-Anthracenedione	208	C14H8O2	000084-65-1	95		
4	9,10-Anthracenedione	208	C14H8O2	000084-65-1	93		
5	Benzo[c]cinnoline	180	C12H8N2	000230-17-1	83		



Data Path : Z:\svoasrv\HPCHEM1\BNA_N\Data\BN060824\
 Data File : BN031854.D
 Acq On : 08 Jun 2024 11:55
 Operator : MA/JU
 Sample : P2634-10
 Misc :
 ALS Vial : 5 Sample Multiplier: 1

Instrument :
 BNA_N
 ClientSampleId :
 BHBX4

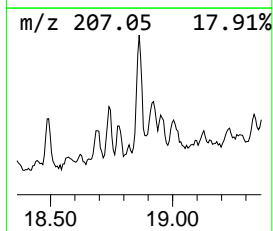
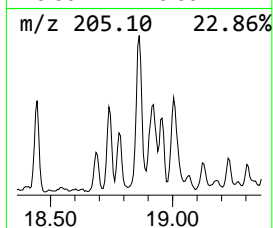
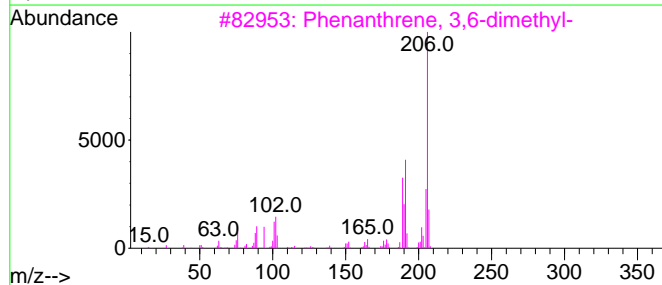
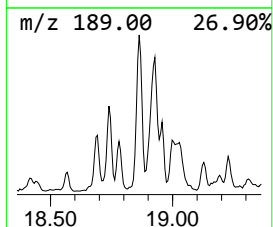
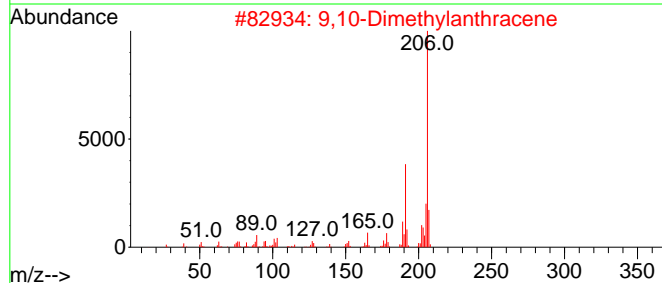
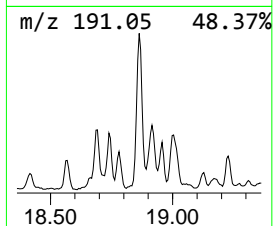
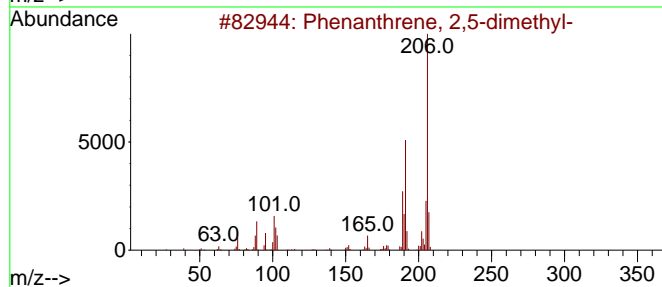
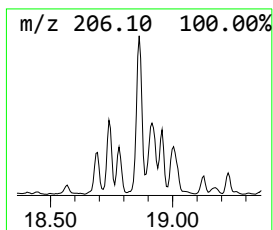
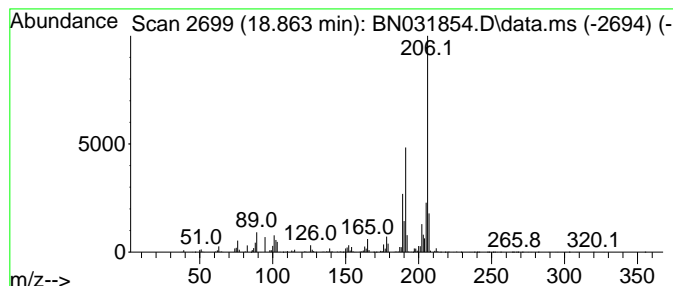
Quant Method : Z:\svoasrv\HPCHEM1\BNA_N\Methods\SFAM-EPA-BN052924.MA.M
 Quant Title : SVOA CALIBRATION

TIC Library : C:\Database\NIST20.L
 TIC Integration Parameters: LSCINT.P

 Peak Number 10 Phenanthrene, 2,5-dimethyl- Concentration Rank 7

R.T.	EstConc	Area	Relative to ISTD	R.T.
18.863	4.13 ng/ul	1394000	Phenanthrene-d10	17.063

Hit#	of	5	Tentative ID	MW	MolForm	CAS#	Qual
1			Phenanthrene, 2,5-dimethyl-	206	C16H14	003674-66-6	94
2			9,10-Dimethylanthracene	206	C16H14	000781-43-1	91
3			Phenanthrene, 3,6-dimethyl-	206	C16H14	001576-67-6	91
4			Phenanthrene, 2,3-dimethyl-	206	C16H14	003674-65-5	90
5			9,10-Dimethylanthracene	206	C16H14	000781-43-1	89



Data Path : Z:\svoasrv\HPCHEM1\BNA_N\Data\BN060824\
 Data File : BN031854.D
 Acq On : 08 Jun 2024 11:55
 Operator : MA/JU
 Sample : P2634-10
 Misc :
 ALS Vial : 5 Sample Multiplier: 1

Instrument :
 BNA_N
 ClientSampleId :
 BHBX4

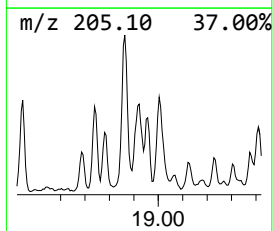
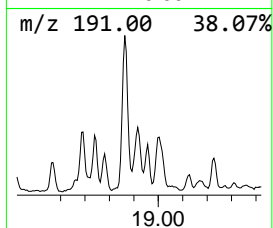
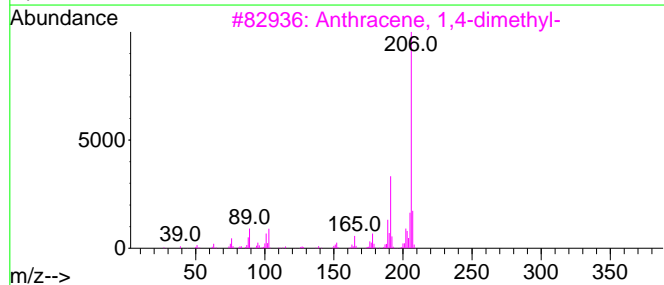
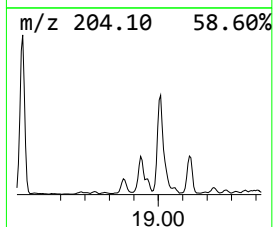
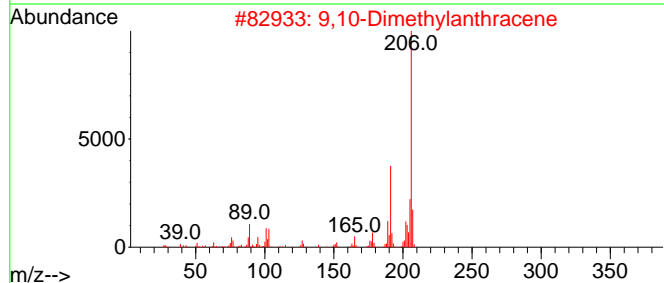
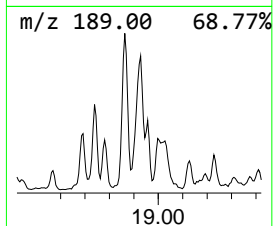
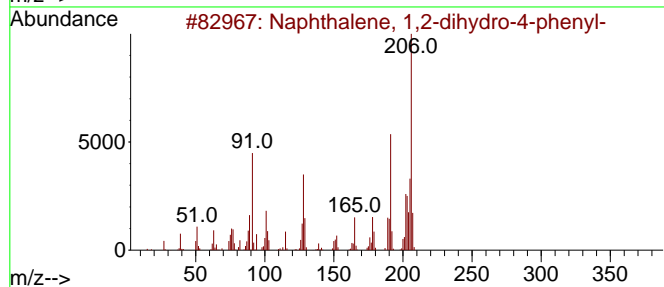
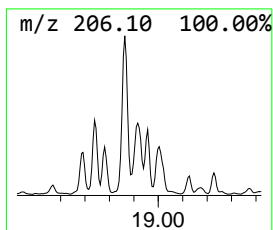
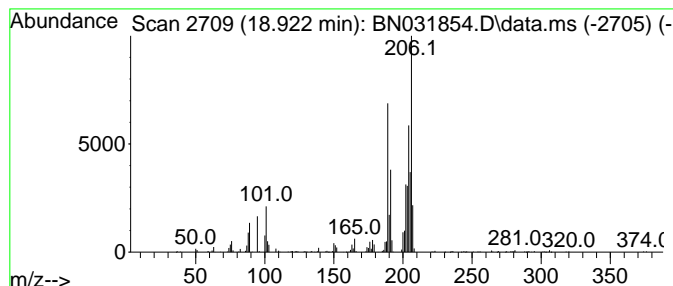
Quant Method : Z:\svoasrv\HPCHEM1\BNA_N\Methods\SFAM-EPA-BN052924.MA.M
 Quant Title : SVOA CALIBRATION

TIC Library : C:\Database\NIST20.L
 TIC Integration Parameters: LSCINT.P

 Peak Number 11 Naphthalene, 1,2-dihydro-4-... Concentration Rank 19

R.T.	EstConc	Area	Relative to ISTD	R.T.
18.922	2.11 ng/ul	714372	Phenanthrene-d10	17.063

Hit#	of	5	Tentative ID	MW	MolForm	CAS#	Qual
1			Naphthalene, 1,2-dihydro-4-phenyl-	206	C16H14	007469-40-1	55
2			9,10-Dimethylantracene	206	C16H14	000781-43-1	55
3			Anthracene, 1,4-dimethyl-	206	C16H14	000781-92-0	55
4			Phenanthrene, 2,3-dimethyl-	206	C16H14	003674-65-5	50
5			Naphthalene, 1,2-dihydro-4-phenyl-	206	C16H14	007469-40-1	49



Data Path : Z:\svoasrv\HPCHEM1\BNA_N\Data\BN060824\
 Data File : BN031854.D
 Acq On : 08 Jun 2024 11:55
 Operator : MA/JU
 Sample : P2634-10
 Misc :
 ALS Vial : 5 Sample Multiplier: 1

Instrument :
 BNA_N
 ClientSampleId :
 BHBX4

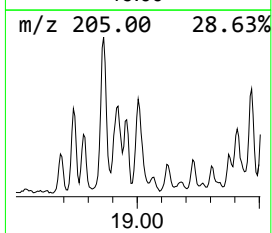
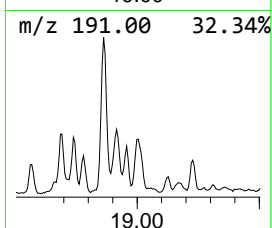
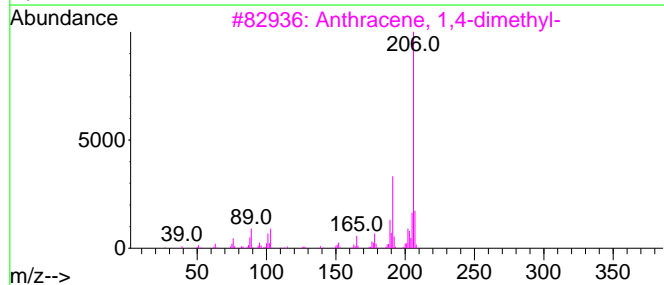
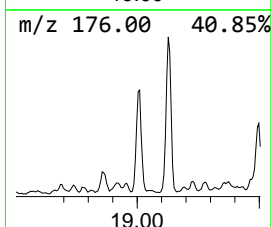
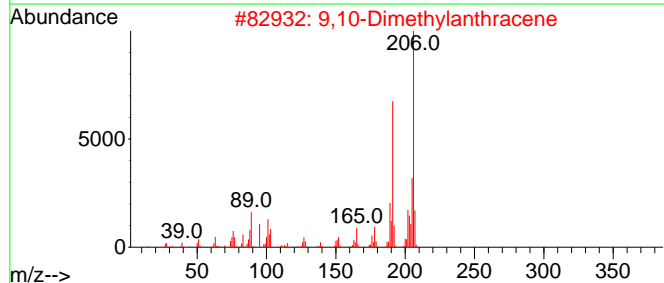
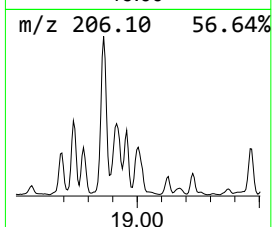
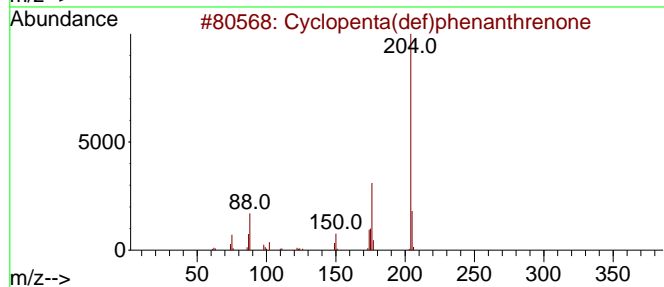
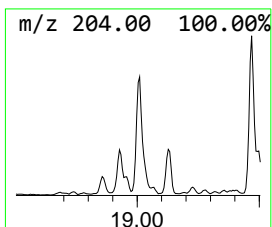
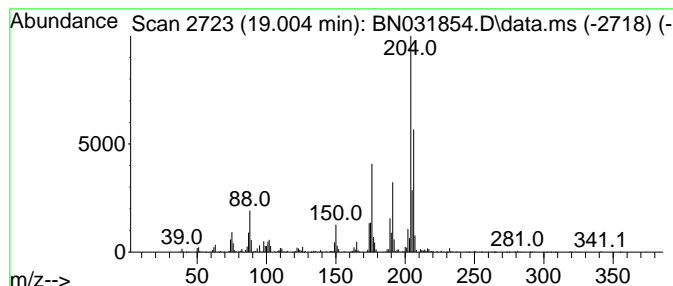
Quant Method : Z:\svoasrv\HPCHEM1\BNA_N\Methods\SFAM-EPA-BN052924.MA.M
 Quant Title : SVOA CALIBRATION

TIC Library : C:\Database\NIST20.L
 TIC Integration Parameters: LSCINT.P

 Peak Number 12 Cyclopenta(def)phenanthrene Concentration Rank 8

R.T.	EstConc	Area	Relative to ISTD	R.T.
19.004	3.46 ng/ul	1167190	Phenanthrene-d10	17.063

Hit#	of 5	Tentative ID	MW	MolForm	CAS#	Qual
1		Cyclopenta(def)phenanthrene	204	C15H8O	005737-13-3	95
2		9,10-Dimethylantracene	206	C16H14	000781-43-1	38
3		Anthracene, 1,4-dimethyl-	206	C16H14	000781-92-0	35
4		1H-Indene, 2-methyl-3-phenyl-	206	C16H14	035099-60-6	35
5		1,1,4a-Trimethyl-5,6-dimethylene...	204	C15H24	1000193-60-8	35



Data Path : Z:\svoasrv\HPCHEM1\BNA_N\Data\BN060824\
 Data File : BN031854.D
 Acq On : 08 Jun 2024 11:55
 Operator : MA/JU
 Sample : P2634-10
 Misc :
 ALS Vial : 5 Sample Multiplier: 1

Instrument :
 BNA_N
 ClientSampleId :
 BHBX4

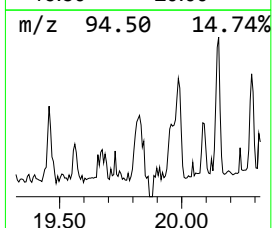
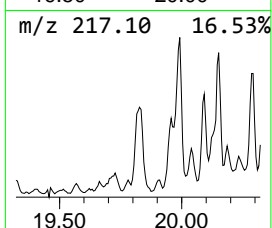
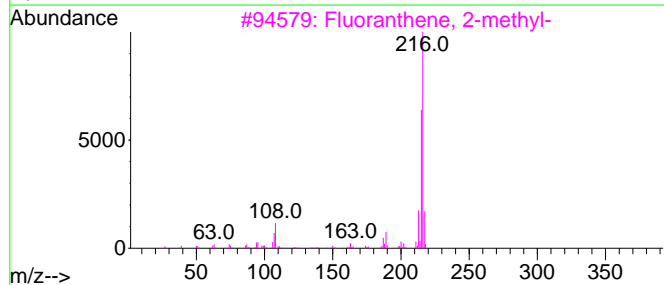
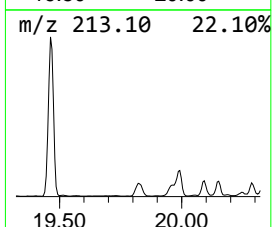
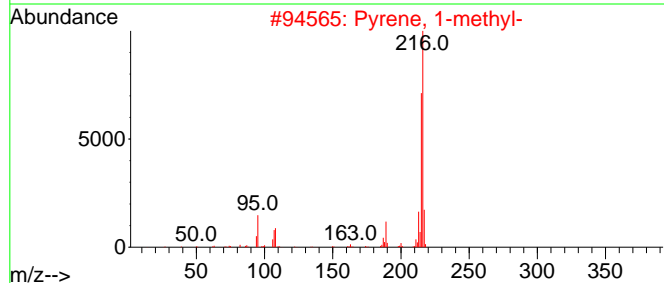
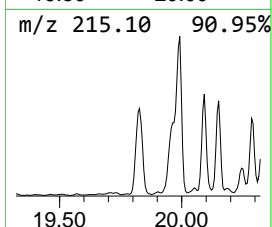
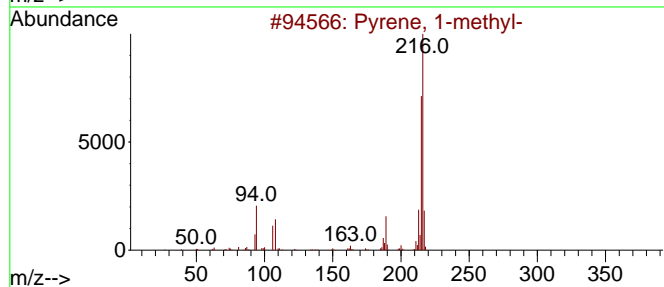
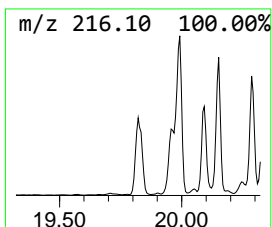
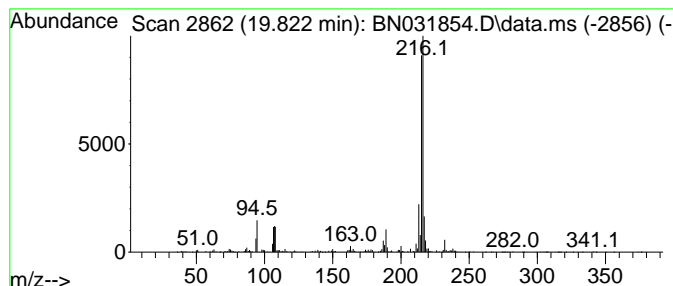
Quant Method : Z:\svoasrv\HPCHEM1\BNA_N\Methods\SFAM-EPA-BN052924.MA.M
 Quant Title : SVOA CALIBRATION

TIC Library : C:\Database\NIST20.L
 TIC Integration Parameters: LSCINT.P

 Peak Number 13 Pyrene, 1-methyl- Concentration Rank 12

R.T.	EstConc	Area	Relative to ISTD	R.T.
19.822	2.72 ng/ul	1592660	Chrysene-d12	21.304

Hit#	of 5	Tentative ID	MW	MolForm	CAS#	Qual
1		Pyrene, 1-methyl-	216	C17H12	002381-21-7	96
2		Pyrene, 1-methyl-	216	C17H12	002381-21-7	93
3		Fluoranthene, 2-methyl-	216	C17H12	033543-31-6	93
4		Pyrene, 1-methyl-	216	C17H12	002381-21-7	91
5		11H-Benzo[b]fluorene	216	C17H12	000243-17-4	76



Data Path : Z:\svoasrv\HPCHEM1\BNA_N\Data\BN060824\
 Data File : BN031854.D
 Acq On : 08 Jun 2024 11:55
 Operator : MA/JU
 Sample : P2634-10
 Misc :
 ALS Vial : 5 Sample Multiplier: 1

Instrument :
 BNA_N
 ClientSampleId :
 BHBX4

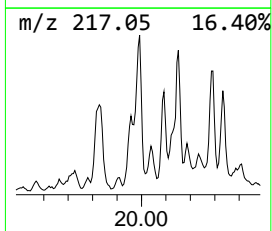
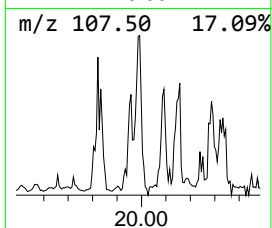
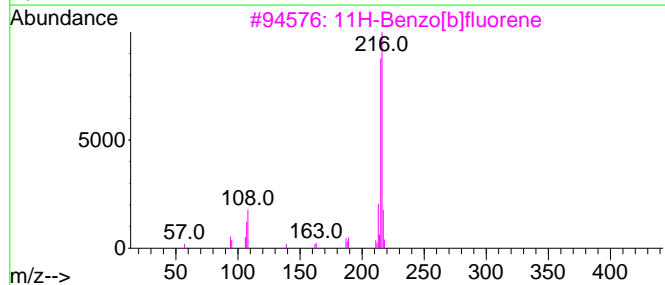
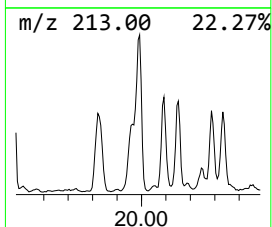
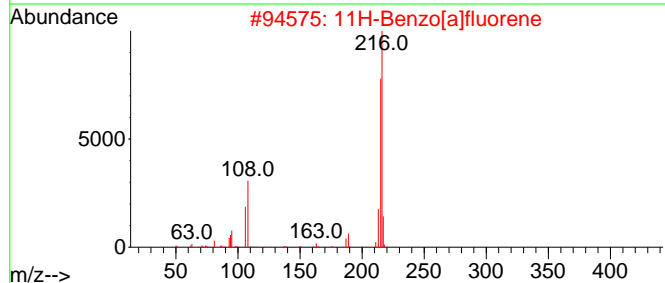
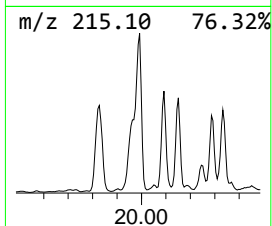
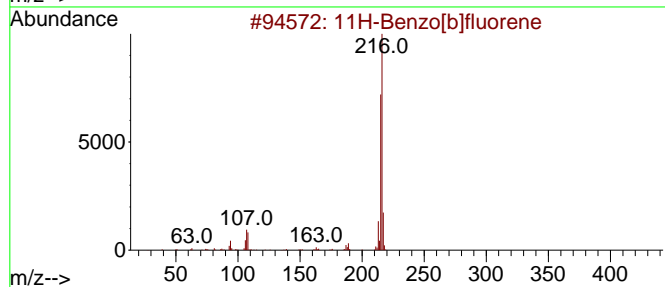
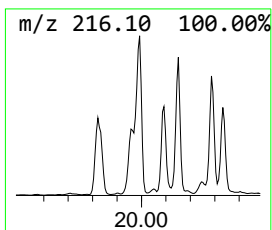
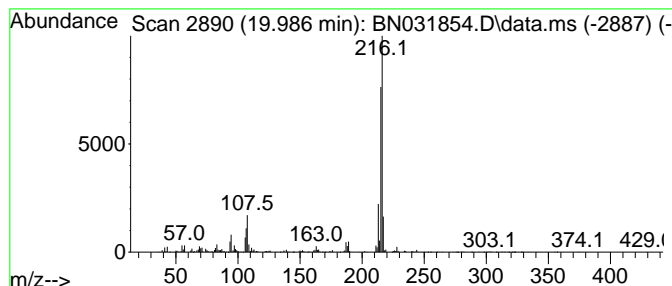
Quant Method : Z:\svoasrv\HPCHEM1\BNA_N\Methods\SFAM-EPA-BN052924.MA.M
 Quant Title : SVOA CALIBRATION

TIC Library : C:\Database\NIST20.L
 TIC Integration Parameters: LSCINT.P

 Peak Number 14 11H-Benzo[b]fluorene Concentration Rank 10

R.T.	EstConc	Area	Relative to ISTD	R.T.
19.986	2.89 ng/ul	1687360	Chrysene-d12	21.304

Hit#	of	5	Tentative ID	MW	MolForm	CAS#	Qual
1			11H-Benzo[b]fluorene	216	C17H12	000243-17-4	93
2			11H-Benzo[a]fluorene	216	C17H12	000238-84-6	91
3			11H-Benzo[b]fluorene	216	C17H12	000243-17-4	91
4			Pyrene, 1-methyl-	216	C17H12	002381-21-7	83
5			11H-Benzo[a]fluorene	216	C17H12	000238-84-6	81



Data Path : Z:\svoasrv\HPCHEM1\BNA_N\Data\BN060824\
 Data File : BN031854.D
 Acq On : 08 Jun 2024 11:55
 Operator : MA/JU
 Sample : P2634-10
 Misc :
 ALS Vial : 5 Sample Multiplier: 1

Instrument :
 BNA_N
 ClientSampleId :
 BHBX4

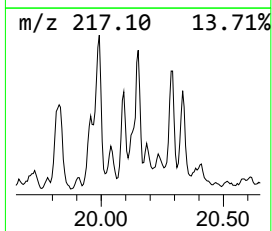
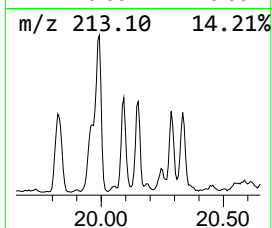
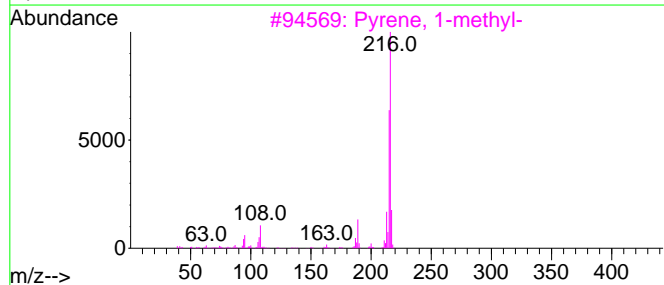
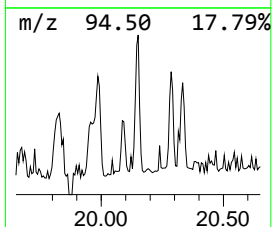
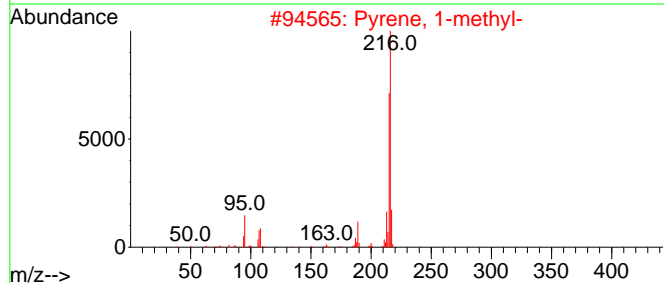
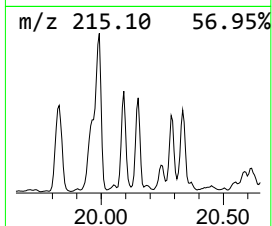
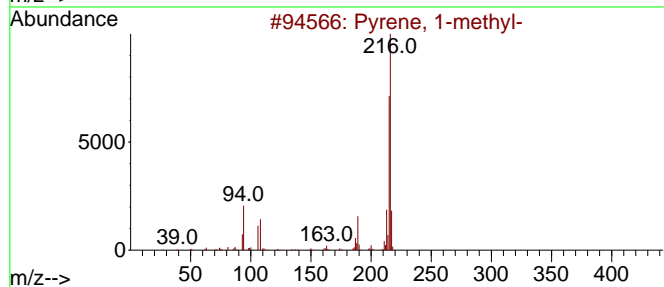
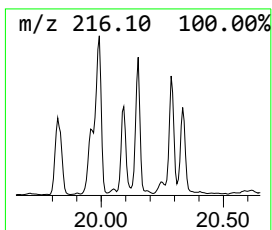
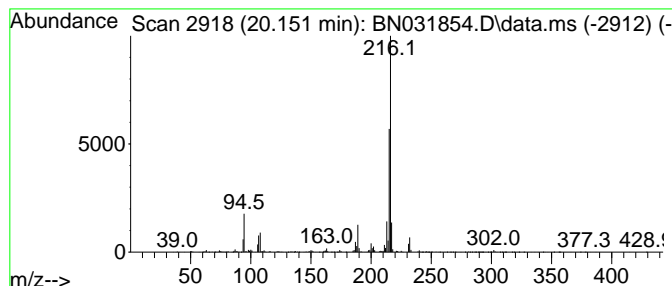
Quant Method : Z:\svoasrv\HPCHEM1\BNA_N\Methods\SFAM-EPA-BN052924.MA.M
 Quant Title : SVOA CALIBRATION

TIC Library : C:\Database\NIST20.L
 TIC Integration Parameters: LSCINT.P

 Peak Number 15 Fluoranthene, 2-methyl- Concentration Rank 18

R.T.	EstConc	Area	Relative to ISTD	R.T.
20.151	2.20 ng/ul	1286570	Chrysene-d12	21.304

Hit#	of	5	Tentative ID	MW	MolForm	CAS#	Qual
1			Pyrene, 1-methyl-	216	C17H12	002381-21-7	97
2			Pyrene, 1-methyl-	216	C17H12	002381-21-7	96
3			Pyrene, 1-methyl-	216	C17H12	002381-21-7	96
4			Fluoranthene, 2-methyl-	216	C17H12	033543-31-6	95
5			Pyrene, 4-methyl-	216	C17H12	003353-12-6	95



Data Path : Z:\svoasrv\HPCHEM1\BNA_N\Data\BN060824\
 Data File : BN031854.D
 Acq On : 08 Jun 2024 11:55
 Operator : MA/JU
 Sample : P2634-10
 Misc :
 ALS Vial : 5 Sample Multiplier: 1

Instrument :
 BNA_N
 ClientSampleId :
 BHBX4

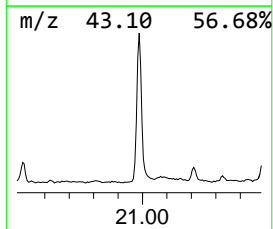
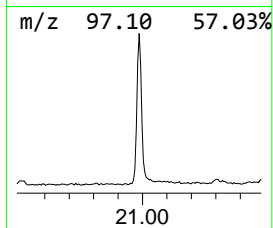
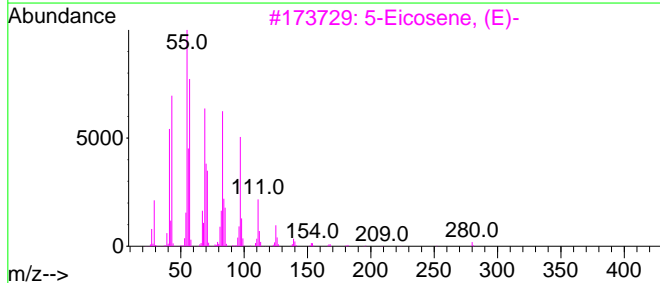
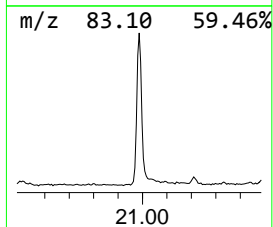
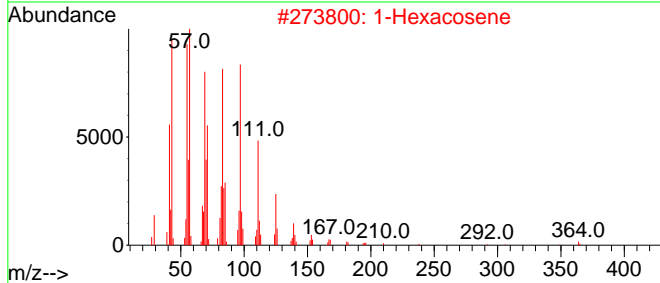
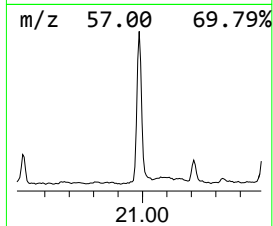
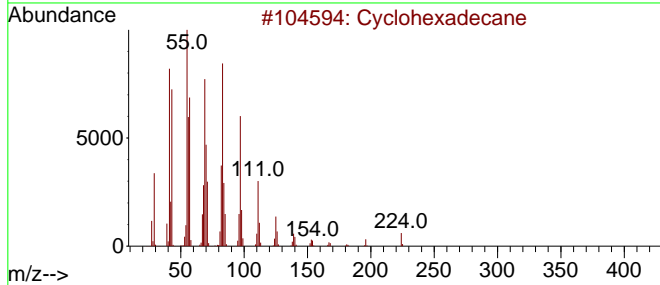
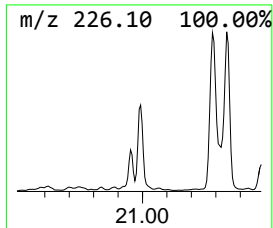
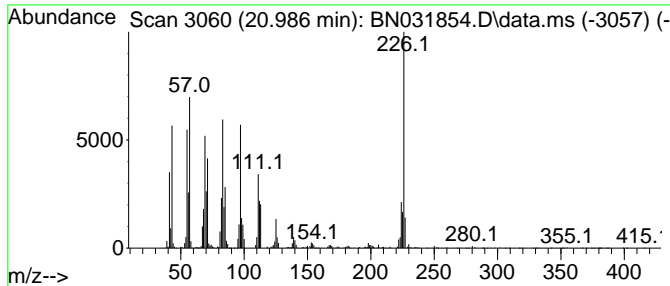
Quant Method : Z:\svoasrv\HPCHEM1\BNA_N\Methods\SFAM-EPA-BN052924.MA.M
 Quant Title : SVOA CALIBRATION

TIC Library : C:\Database\NIST20.L
 TIC Integration Parameters: LSCINT.P

 Peak Number 16 (DEL) Alkane: Cyclic20.986 Concentration Rank 4

R.T.	EstConc	Area	Relative to ISTD	R.T.
20.986	5.18 ng/ul	3031840	Chrysene-d12	21.304

Hit#	of 5	Tentative ID	MW	MolForm	CAS#	Qual
1		Cyclohexadecane	224	C16H32	000295-65-8	95
2		1-Hexacosene	364	C26H52	018835-33-1	87
3		5-Eicosene, (E)-	280	C20H40	074685-30-6	81
4		1-Heneicosanol	312	C21H44O	015594-90-8	80
5		Octadecyl trifluoroacetate	366	C20H37F3O2	079392-43-1	70



Data Path : Z:\svoasrv\HPCHEM1\BNA_N\Data\BN060824\
 Data File : BN031854.D
 Acq On : 08 Jun 2024 11:55
 Operator : MA/JU
 Sample : P2634-10
 Misc :
 ALS Vial : 5 Sample Multiplier: 1

Instrument :
 BNA_N
 ClientSampleId :
 BHBX4

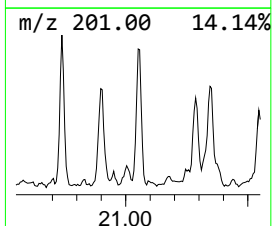
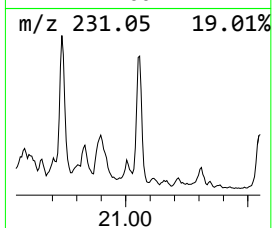
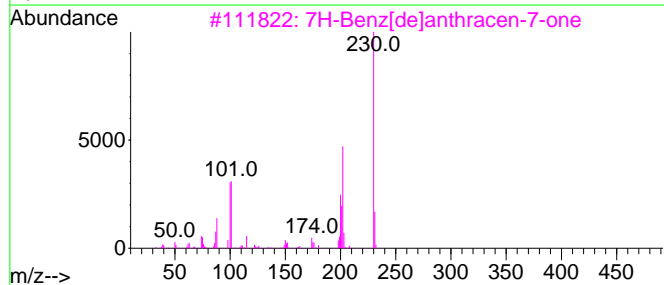
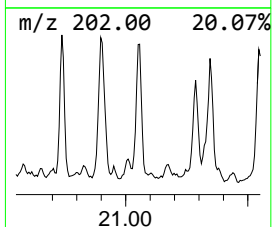
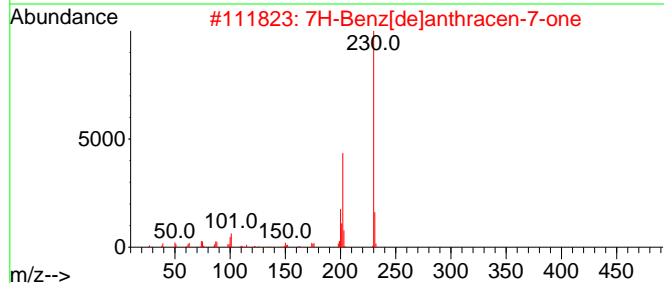
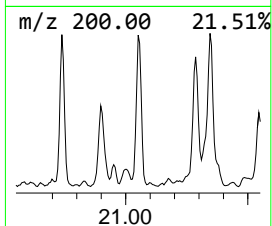
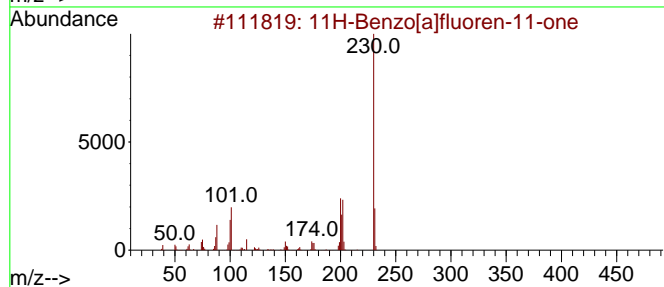
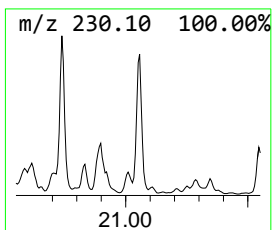
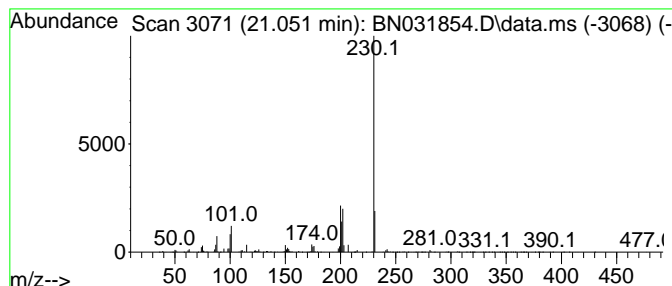
Quant Method : Z:\svoasrv\HPCHEM1\BNA_N\Methods\SFAM-EPA-BN052924.MA.M
 Quant Title : SVOA CALIBRATION

TIC Library : C:\Database\NIST20.L
 TIC Integration Parameters: LSCINT.P

 Peak Number 17 11H-Benzo[a]fluoren-11-one Concentration Rank 14

R.T.	EstConc	Area	Relative to ISTD	R.T.
21.051	2.65 ng/ul	1551510	Chrysene-d12	21.304

Hit#	of 5	Tentative ID	MW	MolForm	CAS#	Qual
1		11H-Benzo[a]fluoren-11-one	230	C17H10O	000479-79-8	97
2		7H-Benz[de]anthracen-7-one	230	C17H10O	000082-05-3	91
3		7H-Benz[de]anthracen-7-one	230	C17H10O	000082-05-3	90
4		7H-Benz[de]anthracen-7-one	230	C17H10O	000082-05-3	81
5		o-Terphenyl	230	C18H14	000084-15-1	64



Data Path : Z:\svoasrv\HPCHEM1\BNA_N\Data\BN060824\
 Data File : BN031854.D
 Acq On : 08 Jun 2024 11:55
 Operator : MA/JU
 Sample : P2634-10
 Misc :
 ALS Vial : 5 Sample Multiplier: 1

Instrument :
 BNA_N
 ClientSampleId :
 BHBX4

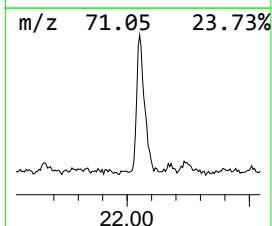
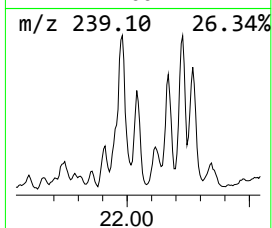
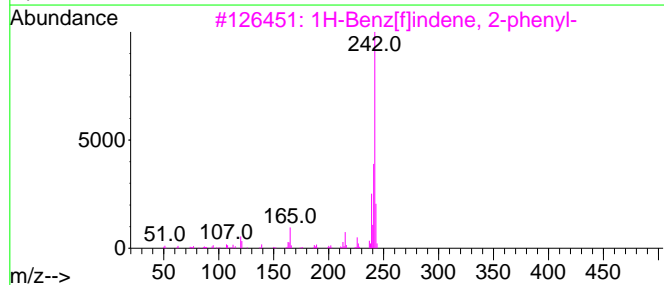
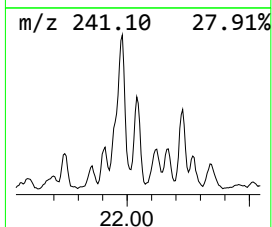
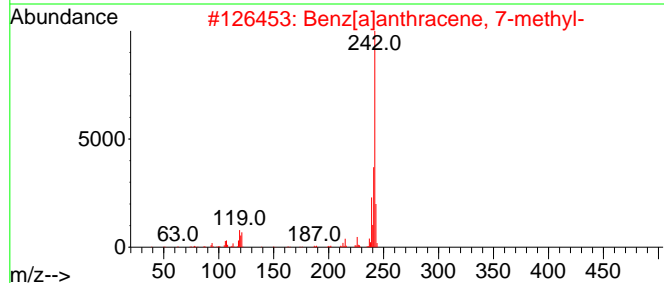
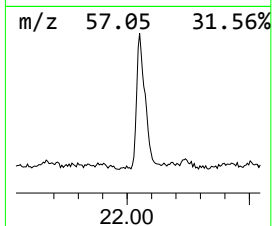
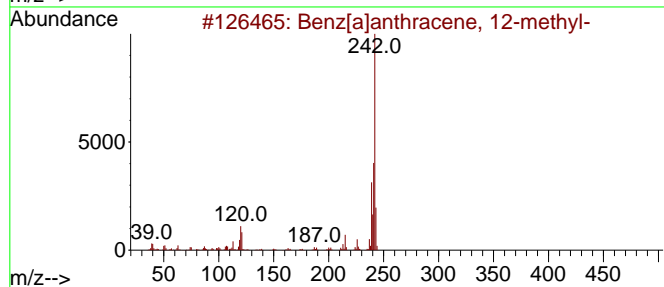
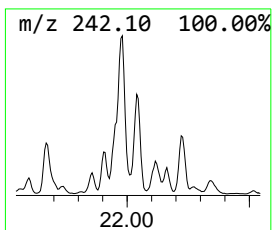
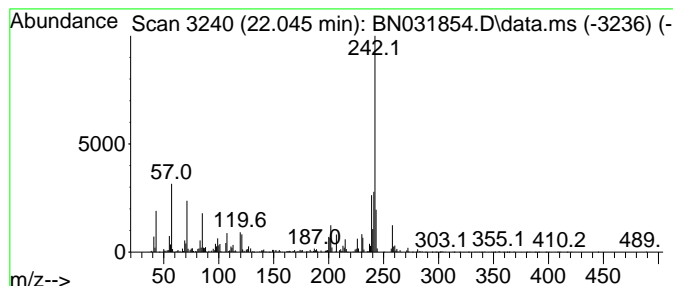
Quant Method : Z:\svoasrv\HPCHEM1\BNA_N\Methods\SFAM-EPA-BN052924.MA.M
 Quant Title : SVOA CALIBRATION

TIC Library : C:\Database\NIST20.L
 TIC Integration Parameters: LSCINT.P

 Peak Number 18 Benz[a]anthracene, 12-methyl- Concentration Rank 17

R.T.	EstConc	Area	Relative to ISTD	R.T.
22.045	2.22 ng/ul	1301000	Chrysene-d12	21.304

Hit#	of	5	Tentative ID	MW	MolForm	CAS#	Qual
1			Benz[a]anthracene, 12-methyl-	242	C19H14	002422-79-9	96
2			Benz[a]anthracene, 7-methyl-	242	C19H14	002541-69-7	95
3			1H-Benz[f]indene, 2-phenyl-	242	C19H14	1000305-22-4	95
4			Benz[a]anthracene, 6-methyl-	242	C19H14	000316-14-3	92
5			Chrysene, 3-methyl-	242	C19H14	003351-31-3	92



Data Path : Z:\svoasrv\HPCHEM1\BNA_N\Data\BN060824\
 Data File : BN031854.D
 Acq On : 08 Jun 2024 11:55
 Operator : MA/JU
 Sample : P2634-10
 Misc :
 ALS Vial : 5 Sample Multiplier: 1

Instrument :
 BNA_N
 ClientSampleId :
 BHBX4

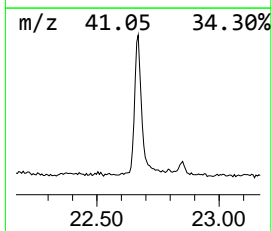
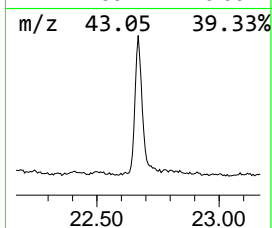
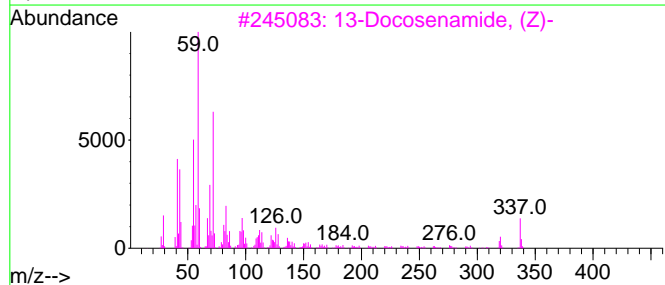
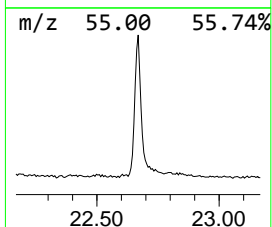
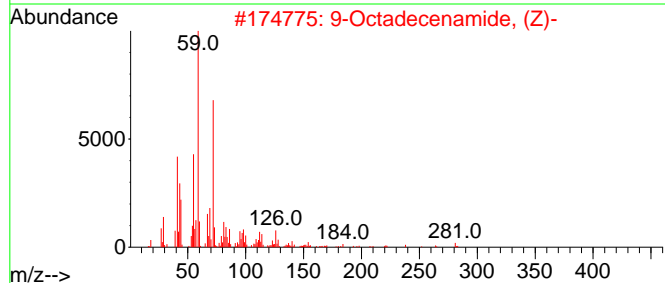
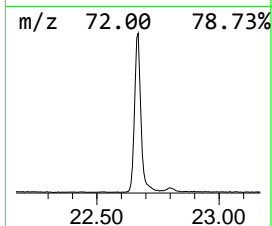
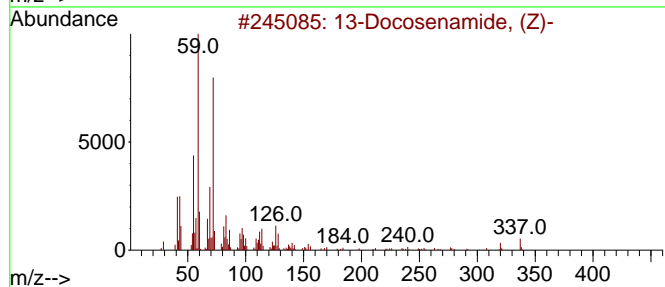
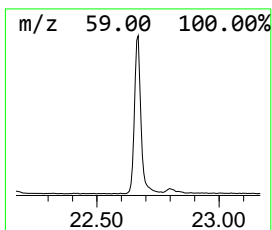
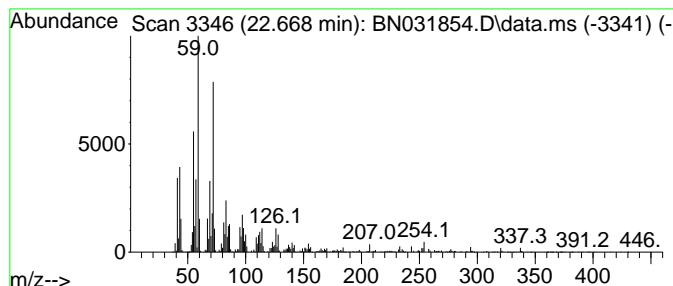
Quant Method : Z:\svoasrv\HPCHEM1\BNA_N\Methods\SFAM-EPA-BN052924.MA.M
 Quant Title : SVOA CALIBRATION

TIC Library : C:\Database\NIST20.L
 TIC Integration Parameters: LSCINT.P

 Peak Number 19 13-Docosenamide, (Z)- Concentration Rank 6

R.T.	EstConc	Area	Relative to ISTD	R.T.
22.668	4.26 ng/ul	2493990	Chrysene-d12	21.304

Hit#	of 5	Tentative ID	MW	MolForm	CAS#	Qual
1		13-Docosenamide, (Z)-	337	C22H43NO	000112-84-5	98
2		9-Octadecenamide, (Z)-	281	C18H35NO	000301-02-0	91
3		13-Docosenamide, (Z)-	337	C22H43NO	000112-84-5	90
4		13-Docosenamide, (Z)-	337	C22H43NO	000112-84-5	76
5		Palmitoleamide	253	C16H31NO	106010-22-4	72



Data Path : Z:\svoasrv\HPCHEM1\BNA_N\Data\BN060824\
 Data File : BN031854.D
 Acq On : 08 Jun 2024 11:55
 Operator : MA/JU
 Sample : P2634-10
 Misc :
 ALS Vial : 5 Sample Multiplier: 1

Instrument :
 BNA_N
 ClientSampleId :
 BHBX4

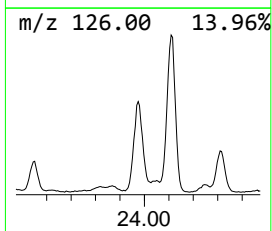
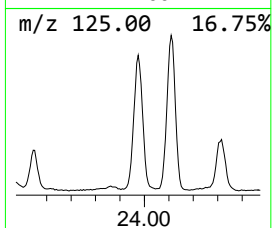
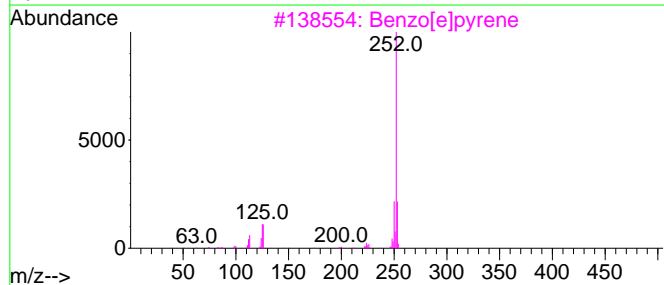
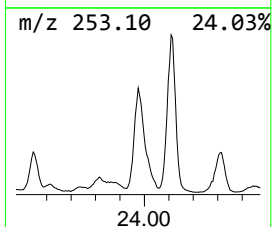
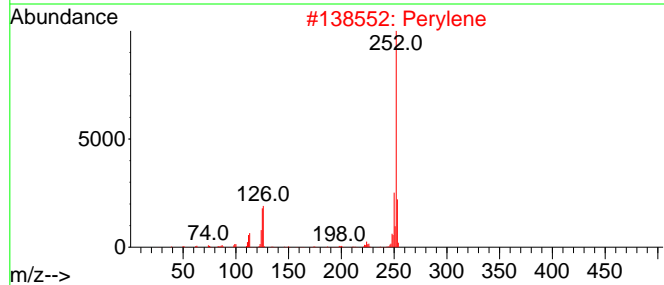
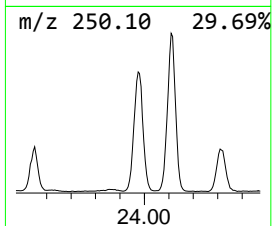
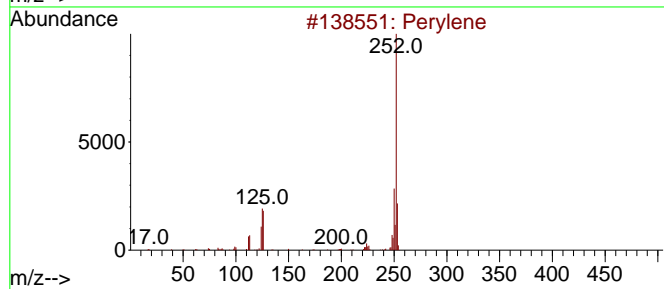
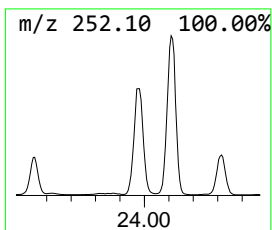
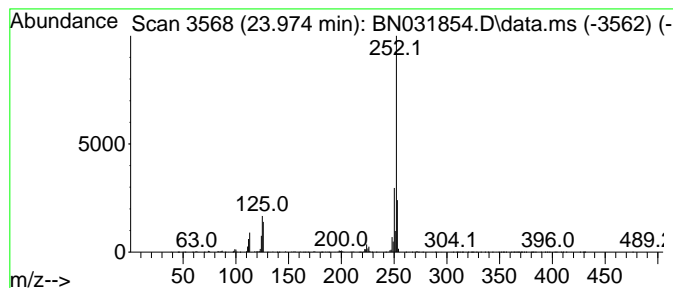
Quant Method : Z:\svoasrv\HPCHEM1\BNA_N\Methods\SFAM-EPA-BN052924.MA.M
 Quant Title : SVOA CALIBRATION

TIC Library : C:\Database\NIST20.L
 TIC Integration Parameters: LSCINT.P

 Peak Number 20 Perylene Concentration Rank 2

R.T.	EstConc	Area	Relative to ISTD	R.T.
23.974	8.50 ng/ul	3068190	Perylene-d12	24.251

Hit#	of 5	Tentative ID	MW	MolForm	CAS#	Qual
1		Perylene	252	C20H12	000198-55-0	98
2		Perylene	252	C20H12	000198-55-0	98
3		Benzo[e]pyrene	252	C20H12	000192-97-2	98
4		Benzo[a]pyrene	252	C20H12	000050-32-8	95
5		Benzo[a]pyrene	252	C20H12	000050-32-8	93



Data Path : Z:\svoasrv\HPCHEM1\BNA_N\Data\BN060824\
 Data File : BN031854.D
 Acq On : 08 Jun 2024 11:55
 Operator : MA/JU
 Sample : P2634-10
 Misc :
 ALS Vial : 5 Sample Multiplier: 1

Instrument :
 BNA_N
 ClientSampleId :
 BHBX4

Quant Method : Z:\svoasrv\HPCHEM1\BNA_N\Methods\SFAM-EPA-BN052924.MA.M
 Quant Title : SVOA CALIBRATION

TIC Library : C:\Database\NIST20.L
 TIC Integration Parameters: LSCINT.P

TIC Top Hit name	RT	EstConc	Units	Response	--Internal Standard--			
					#	RT	Resp	Conc
Propylene Glycol	3.452	2.7	ng/ul	445057	1	7.669	3339170	20.0
Pentanedioic ac...	9.393	2.1	ng/ul	526876	2	10.451	4988890	20.0
1-Phenoxypropan...	11.198	2.5	ng/ul	628003	2	10.451	4988890	20.0
Anthracene, 2-m...	17.939	4.4	ng/ul	1472220	4	17.063	6756510	20.0
n-Hexadecanoic ...	17.969	14.0	ng/ul	4720410	4	17.063	6756510	20.0
1H-Cyclopropa[1...	18.128	7.1	ng/ul	2412250	4	17.063	6756510	20.0
Phenanthrene, 1...	18.169	2.8	ng/ul	940172	4	17.063	6756510	20.0
Naphthalene, 2-...	18.445	2.4	ng/ul	801467	4	17.063	6756510	20.0
9,10-Anthracene...	18.486	3.3	ng/ul	1128550	4	17.063	6756510	20.0
Phenanthrene, 2...	18.863	4.1	ng/ul	1394000	4	17.063	6756510	20.0
Naphthalene, 1,...	18.922	2.1	ng/ul	714372	4	17.063	6756510	20.0
Cyclopenta(def)...	19.004	3.5	ng/ul	1167190	4	17.063	6756510	20.0
Pyrene, 1-methyl-	19.822	2.7	ng/ul	1592660	5	21.304	11697000	20.0
11H-Benzo[b]flu...	19.986	2.9	ng/ul	1687360	5	21.304	11697000	20.0
Fluoranthene, 2...	20.151	2.2	ng/ul	1286570	5	21.304	11697000	20.0
(DEL) Alkane: C...	20.986	5.2	ng/ul	3031840	5	21.304	11697000	20.0
11H-Benzo[a]flu...	21.051	2.6	ng/ul	1551510	5	21.304	11697000	20.0
Benz[a]anthrace...	22.045	2.2	ng/ul	1301000	5	21.304	11697000	20.0
13-Docosenamide...	22.668	4.3	ng/ul	2493990	5	21.304	11697000	20.0
Perylene	23.974	8.5	ng/ul	3068190	6	24.251	7222400	20.0