

Data Path : Z:\svoasrv\HPCHEM1\BNA\_N\Data\BN060824\  
 Data File : BN031861.D  
 Acq On : 08 Jun 2024 16:31  
 Operator : MA/JU  
 Sample : P2634-01  
 Misc :  
 ALS Vial : 12 Sample Multiplier: 1

Instrument :  
 BNA\_N  
 ClientSampleId :  
 BHBW7

Integration Parameters: LSCINT.P

Integrator: RTE  
 Smoothing : OFF Filtering: 5  
 Sampling : 1 Min Area: 0.1 % of largest Peak  
 Start Thrs: 0.2 Max Peaks: 100  
 Stop Thrs : 0 Peak Location: TOP

If leading or trailing edge < 100 prefer < Baseline drop else tangent >  
 Peak separation: 5

Method : Z:\svoasrv\HPCHEM1\BNA\_N\Methods\SFAM-EPA-BN052924.MA.M  
 Title : SVOA CALIBRATION

Signal : TIC: BN031861.D\data.ms

peak #	R.T. min	first scan	max scan	last scan	PK TY	peak height	corr. area	corr. % max.	% of total
1	3.181	30	33	42	rVB	79502	110358	1.50%	0.079%
2	3.446	74	78	94	rVB	597162	832191	11.34%	0.596%
3	3.587	99	102	114	rBV	626742	974804	13.28%	0.699%
4	3.693	115	120	128	rVB	152030	211649	2.88%	0.152%
5	5.769	465	473	480	rVB	58310	106062	1.45%	0.076%
6	6.846	645	656	670	rVB	1552833	2555041	34.81%	1.831%
7	7.011	672	684	695	rBV	1239079	1923412	26.21%	1.378%
8	7.205	709	717	724	rBV	1594258	2517346	34.30%	1.804%
9	7.275	724	729	735	rBV	268266	436470	5.95%	0.313%
10	7.669	787	796	803	rVV	1657622	2622079	35.73%	1.879%
11	7.740	803	808	814	rVV3	47651	89687	1.22%	0.064%
12	8.375	909	916	924	rBV	1723976	2899693	39.51%	2.078%
13	8.493	931	936	943	rVB	71820	122469	1.67%	0.088%
14	8.828	986	993	1000	rVV	1501640	2455759	33.46%	1.760%
15	9.393	1076	1089	1099	rBV	186827	308831	4.21%	0.221%
16	9.546	1106	1115	1126	rBV	1194061	2062179	28.10%	1.478%
17	10.075	1198	1205	1217	rBV	1827834	3204328	43.66%	2.296%
18	10.452	1260	1269	1275	rBV	2307544	3889300	52.99%	2.787%
19	10.499	1275	1277	1283	rVB	57299	86102	1.17%	0.062%
20	10.599	1286	1294	1312	rVB	967335	1826314	24.88%	1.309%
21	10.999	1356	1362	1369	rVB	84494	143975	1.96%	0.103%
22	11.199	1389	1396	1402	rBV	483890	863193	11.76%	0.619%
23	12.122	1547	1553	1559	rBV	51477	82234	1.12%	0.059%
24	12.340	1586	1590	1598	rVB	49699	84804	1.16%	0.061%
25	13.493	1778	1786	1792	rBV6	34964	89610	1.22%	0.064%
26	13.634	1805	1810	1814	rVB2	71635	117366	1.60%	0.084%
27	13.728	1821	1826	1832	rBV	3059648	4327451	58.96%	3.101%
28	13.963	1860	1866	1868	rBV3	83048	125759	1.71%	0.090%
29	14.004	1868	1873	1891	rVB	3715657	6150255	83.80%	4.408%
30	14.316	1914	1926	1932	rBV	3270286	5124649	69.83%	3.673%
31	14.381	1932	1937	1945	rVB2	77686	148814	2.03%	0.107%
32	14.534	1955	1963	1971	rBV2	2832923	6007466	81.86%	4.305%
33	14.681	1983	1988	1991	rBV	123362	175635	2.39%	0.126%
34	14.934	2024	2031	2035	rBV4	55229	125037	1.70%	0.090%
35	14.987	2035	2040	2044	rVB4	59697	98573	1.34%	0.071%
36	15.110	2053	2061	2064	rBV5	53941	111220	1.52%	0.080%

Data Path : Z:\svoasrv\HPCHEM1\BNA\_N\Data\BN060824\  
 Data File : BN031861.D  
 Acq On : 08 Jun 2024 16:31  
 Operator : MA/JU  
 Sample : P2634-01  
 Misc :  
 ALS Vial : 12 Sample Multiplier: 1

Instrument :  
 BNA\_N  
 ClientSampleId :  
 BHBW7

Integration Parameters: LSCINT.P

Integrator: RTE  
 Smoothing : OFF  
 Sampling : 1  
 Start Thrs : 0.2  
 Stop Thrs : 0

Filtering: 5  
 Min Area: 0.1 % of largest Peak  
 Max Peaks: 100  
 Peak Location: TOP

If leading or trailing edge < 100 prefer < Baseline drop else tangent >  
 Peak separation: 5

Method : Z:\svoasrv\HPCHEM1\BNA\_N\Methods\SFAM-EPA-BN052924.MA.M  
 Title : SVOA CALIBRATION

37	15.310	2088	2095	2101	rBV	4785500	6914657	94.22%	4.955%
38	15.363	2101	2104	2112	rVB2	94971	156711	2.14%	0.112%
39	15.440	2112	2117	2122	rBV	827817	1142119	15.56%	0.819%
40	15.657	2149	2154	2160	rBV	63924	123269	1.68%	0.088%
41	15.810	2172	2180	2186	rVV3	42335	101947	1.39%	0.073%
42	15.869	2186	2190	2203	rVB5	84874	179626	2.45%	0.129%
43	16.040	2213	2219	2225	rBV6	123645	247469	3.37%	0.177%
44	16.369	2267	2275	2280	rBV4	64272	148778	2.03%	0.107%
45	16.416	2280	2283	2288	rVB	57350	82815	1.13%	0.059%
46	16.469	2289	2292	2296	rBV2	61350	89468	1.22%	0.064%
47	16.722	2331	2335	2342	rVB2	145879	218337	2.97%	0.156%
48	16.881	2358	2362	2370	rVB	140299	223000	3.04%	0.160%
49	16.969	2373	2377	2384	rBV4	97155	175673	2.39%	0.126%
50	17.063	2384	2393	2397	rBV	3885670	5736512	78.16%	4.111%
51	17.104	2397	2400	2405	rVB	1994074	2616335	35.65%	1.875%
52	17.163	2405	2410	2415	rBV	4711413	6649900	90.61%	4.766%
53	17.251	2420	2425	2431	rVB4	89755	176637	2.41%	0.127%
54	17.469	2454	2462	2474	rBV2	169958	389213	5.30%	0.279%
55	17.581	2475	2481	2488	rVV3	82476	228733	3.12%	0.164%
56	17.645	2488	2492	2499	rVB2	140019	217926	2.97%	0.156%
57	17.739	2504	2508	2512	rBV2	144118	171000	2.33%	0.123%
58	17.786	2512	2516	2521	rVB	54935	87663	1.19%	0.063%
59	17.851	2522	2527	2533	rVB4	73057	150891	2.06%	0.108%
60	17.939	2537	2542	2543	rBV	514331	605815	8.25%	0.434%
61	17.969	2543	2547	2555	rVB2	1461157	2842599	38.73%	2.037%
62	18.034	2555	2558	2562	rBV	260133	303127	4.13%	0.217%
63	18.128	2569	2574	2578	rBV2	611713	1102646	15.02%	0.790%
64	18.169	2578	2581	2591	rVB	404105	554616	7.56%	0.397%
65	18.257	2592	2596	2599	rBV3	135430	196470	2.68%	0.141%
66	18.292	2599	2602	2606	rVB3	131933	167076	2.28%	0.120%
67	18.445	2623	2628	2631	rBV	312832	453406	6.18%	0.325%
68	18.486	2631	2635	2645	rVB2	383039	600315	8.18%	0.430%
69	18.692	2666	2670	2674	rVB	128303	157600	2.15%	0.113%
70	18.739	2675	2678	2682	rVV	199031	255386	3.48%	0.183%
71	18.781	2682	2685	2689	rVB	152632	184714	2.52%	0.132%
72	18.863	2694	2699	2703	rVV	484238	783781	10.68%	0.562%
73	18.916	2705	2708	2712	rVV3	345827	507783	6.92%	0.364%
74	18.957	2712	2715	2718	rVB	158217	191610	2.61%	0.137%
75	19.004	2719	2723	2729	rBV3	304573	626959	8.54%	0.449%
76	19.128	2736	2744	2751	rBV	4188549	5898061	80.36%	4.227%

Data Path : Z:\svoasrv\HPCHEM1\BNA\_N\Data\BN060824\  
 Data File : BN031861.D  
 Acq On : 08 Jun 2024 16:31  
 Operator : MA/JU  
 Sample : P2634-01  
 Misc :  
 ALS Vial : 12 Sample Multiplier: 1

Instrument :  
 BNA\_N  
 ClientSampleId :  
 BHBW7

Integration Parameters: LSCINT.P

Integrator: RTE  
 Smoothing : OFF Filtering: 5  
 Sampling : 1 Min Area: 0.1 % of largest Peak  
 Start Thrs: 0.2 Max Peaks: 100  
 Stop Thrs : 0 Peak Location: TOP

If leading or trailing edge < 100 prefer < Baseline drop else tangent >  
 Peak separation: 5

Method : Z:\svoasrv\HPCHEM1\BNA\_N\Methods\SFAM-EPA-BN052924.MA.M  
 Title : SVOA CALIBRATION

77	19.192	2752	2755	2758	rBV	99882	113053	1.54%	0.081%
78	19.251	2758	2765	2774	rBV4	522598	1161387	15.82%	0.832%
79	19.463	2795	2801	2804	rBV	4883122	7339092	100.00%	5.260%
80	19.492	2804	2806	2814	rVV	3397049	4187342	57.06%	3.001%
81	19.569	2814	2819	2824	rVB2	278501	432108	5.89%	0.310%
82	19.733	2844	2847	2852	rVB4	164406	239201	3.26%	0.171%
83	19.816	2856	2861	2869	rBV5	336732	847465	11.55%	0.607%
84	19.957	2880	2885	2886	rBV3	255629	398531	5.43%	0.286%
85	19.986	2887	2890	2894	rVB	463999	631414	8.60%	0.453%
86	20.086	2904	2907	2911	rBV	349923	435362	5.93%	0.312%
87	20.151	2913	2918	2922	rVB2	440110	642010	8.75%	0.460%
88	20.286	2938	2941	2945	rBV2	294192	356604	4.86%	0.256%
89	20.333	2946	2949	2953	rVV	309236	437864	5.97%	0.314%
90	20.398	2957	2960	2965	rVB	595053	664602	9.06%	0.476%
91	20.739	3015	3018	3025	rVB	400717	583143	7.95%	0.418%
92	20.951	3051	3054	3056	rBV	297096	322239	4.39%	0.231%
93	20.986	3056	3060	3067	rVB3	1449247	2055266	28.00%	1.473%
94	21.210	3094	3098	3103	rVB	1773689	2182279	29.73%	1.564%
95	21.298	3106	3113	3118	rVV3	3291141	7185300	97.90%	5.149%
96	21.345	3118	3121	3132	rVB	1712622	2585566	35.23%	1.853%
97	22.051	3237	3241	3250	rVB5	427405	1049147	14.30%	0.752%
98	23.316	3450	3456	3463	rBV2	1141223	3287027	44.79%	2.356%
99	24.039	3573	3579	3586	rBV2	1413477	3240783	44.16%	2.323%
100	24.245	3606	3614	3623	rBV	1761316	4488252	61.16%	3.217%

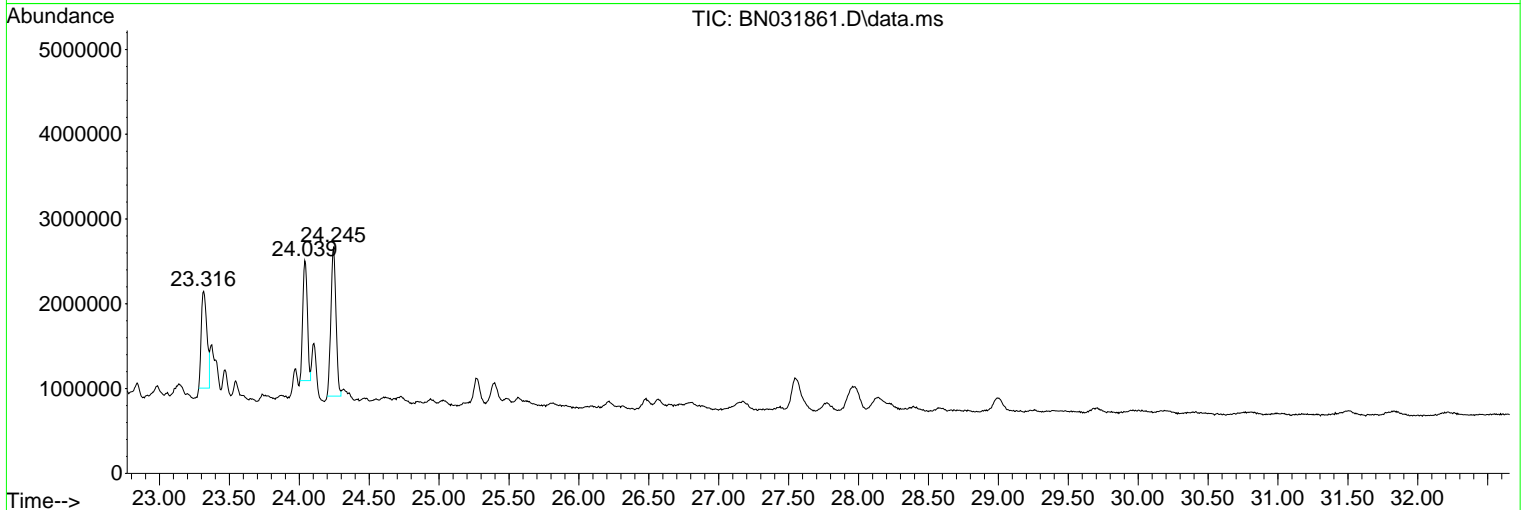
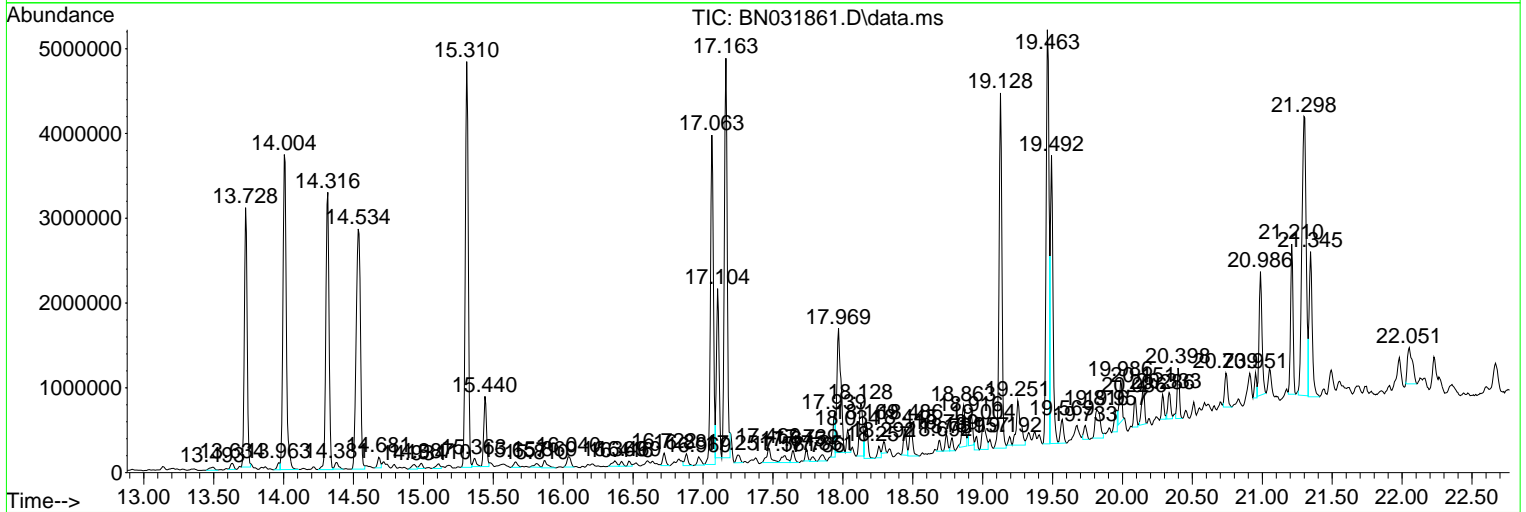
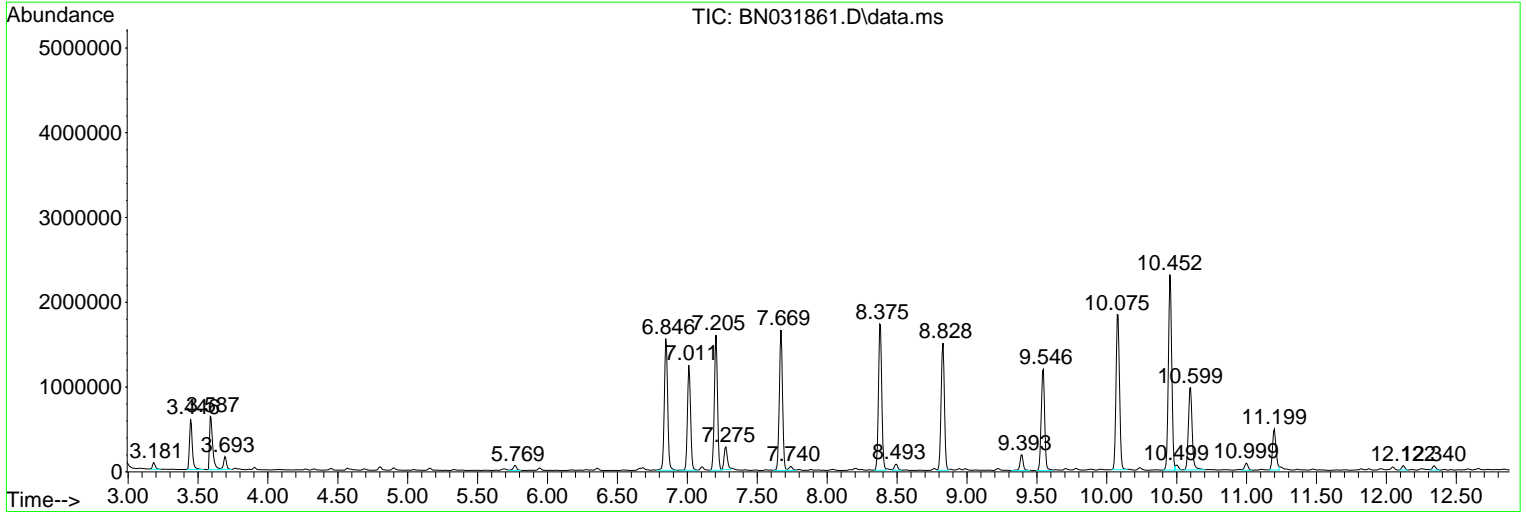
Sum of corrected areas: 139535795

Data Path : Z:\svoasrv\HPCHEM1\BNA\_N\Data\BN060824\  
 Data File : BN031861.D  
 Acq On : 08 Jun 2024 16:31  
 Operator : MA/JU  
 Sample : P2634-01  
 Misc :  
 ALS Vial : 12 Sample Multiplier: 1

Instrument :  
 BNA\_N  
 ClientSampleId :  
 BHBW7

Quant Method : Z:\svoasrv\HPCHEM1\BNA\_N\Methods\SFAM-EPA-BN052924.MA.M  
 Quant Title : SVOA CALIBRATION

TIC Library : C:\Database\NIST20.L  
 TIC Integration Parameters: LSCINT.P



Data Path : Z:\svoasrv\HPCHEM1\BNA\_N\Data\BN060824\  
 Data File : BN031861.D  
 Acq On : 08 Jun 2024 16:31  
 Operator : MA/JU  
 Sample : P2634-01  
 Misc :  
 ALS Vial : 12 Sample Multiplier: 1

Instrument :  
 BNA\_N  
 ClientSampleId :  
 BHBW7

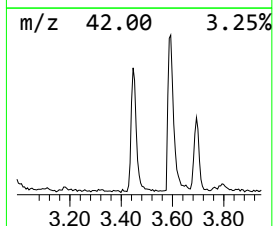
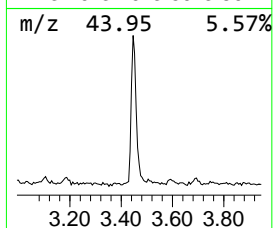
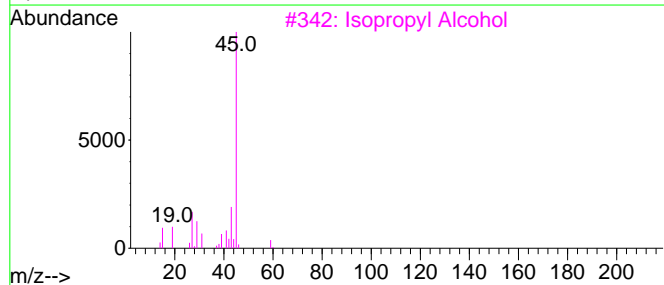
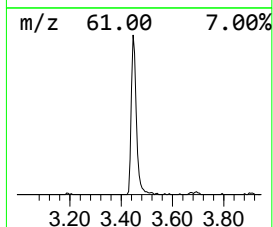
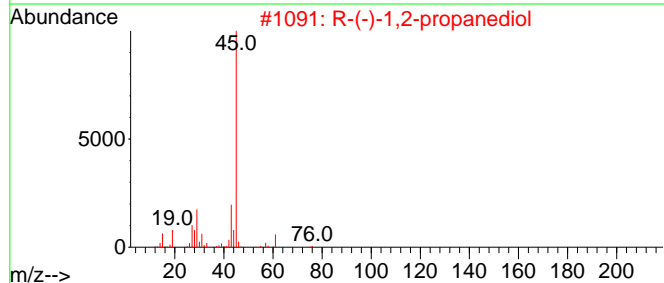
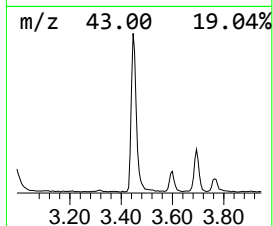
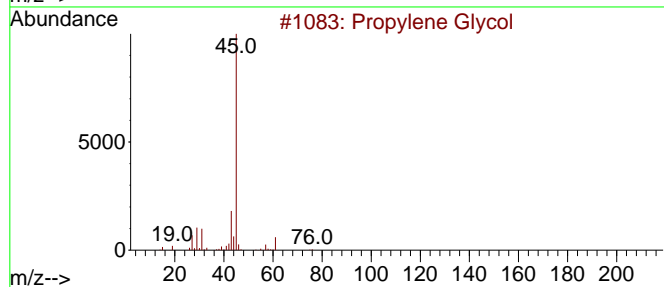
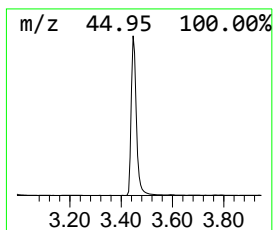
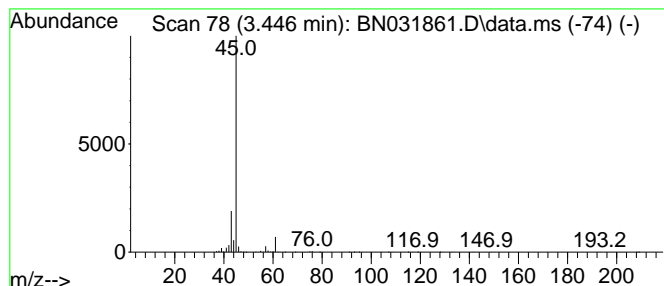
Quant Method : Z:\svoasrv\HPCHEM1\BNA\_N\Methods\SFAM-EPA-BN052924.MA.M  
 Quant Title : SVOA CALIBRATION

TIC Library : C:\Database\NIST20.L  
 TIC Integration Parameters: LSCINT.P

\*\*\*\*\*  
 Peak Number 1 Propylene Glycol Concentration Rank 2

R.T.	EstConc	Area	Relative to ISTD	R.T.
3.446	6.35 ng/ul	832191	1,4-Dichlorobenzene-d4	7.669

Hit#	of	5	Tentative ID	MW	MolForm	CAS#	Qual
1			Propylene Glycol	76	C3H8O2	000057-55-6	86
2			R-(-)-1,2-propanediol	76	C3H8O2	004254-14-2	78
3			Isopropyl Alcohol	60	C3H8O	000067-63-0	56
4			(S)-(+)-1,2-Propanediol	76	C3H8O2	004254-15-3	43
5			Propanoic acid, 2-hydroxy-, meth...	104	C4H8O3	000547-64-8	40



Data Path : Z:\svoasrv\HPCHEM1\BNA\_N\Data\BN060824\  
 Data File : BN031861.D  
 Acq On : 08 Jun 2024 16:31  
 Operator : MA/JU  
 Sample : P2634-01  
 Misc :  
 ALS Vial : 12 Sample Multiplier: 1

Instrument :  
 BNA\_N  
 ClientSampleId :  
 BHBW7

Quant Method : Z:\svoasrv\HPCHEM1\BNA\_N\Methods\SFAM-EPA-BN052924.MA.M  
 Quant Title : SVOA CALIBRATION

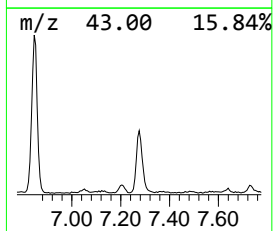
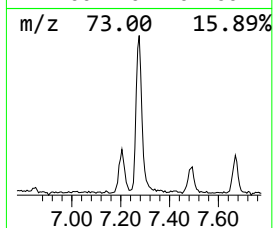
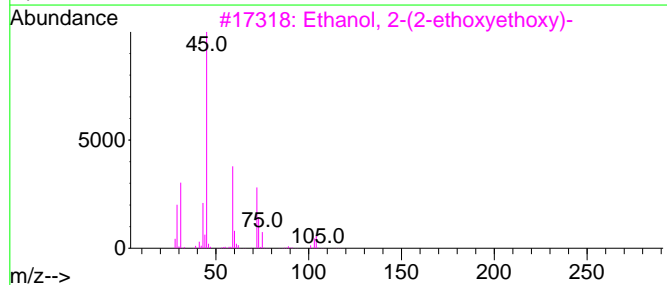
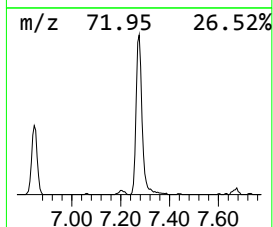
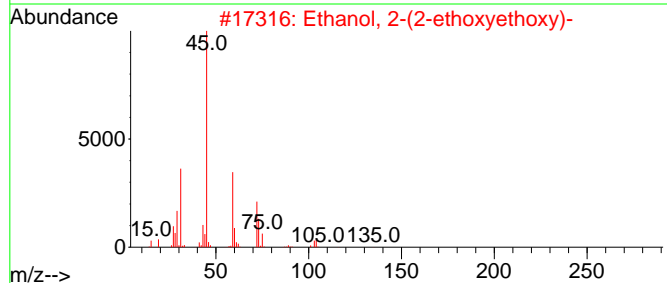
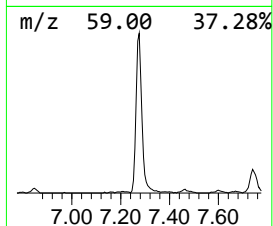
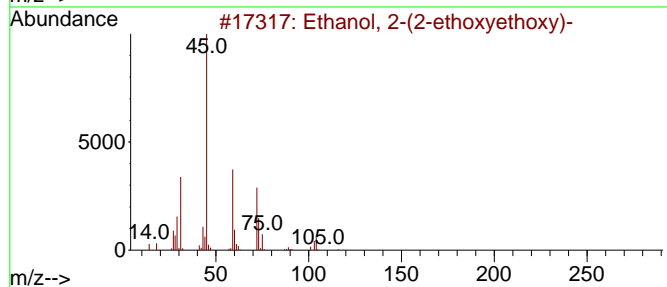
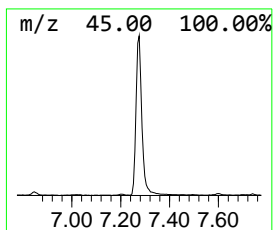
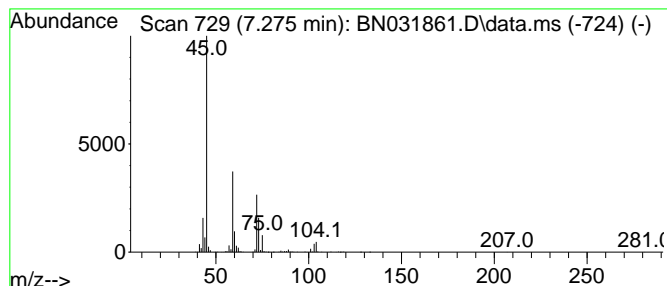
TIC Library : C:\Database\NIST20.L  
 TIC Integration Parameters: LSCINT.P

\*\*\*\*\*  
 Peak Number 2 Ethanol, 2-(2-ethoxyethoxy)- Concentration Rank 6

R.T.	EstConc	Area	Relative to ISTD	R.T.
7.275	3.33 ng/ul	436470	1,4-Dichlorobenzene-d4	7.669

Hit#	of	5	Tentative ID	MW	MolForm	CAS#	Qual
1			Ethanol, 2-(2-ethoxyethoxy)-	134	C6H14O3	000111-90-0	90
2			Ethanol, 2-(2-ethoxyethoxy)-	134	C6H14O3	000111-90-0	90
3			Ethanol, 2-(2-ethoxyethoxy)-	134	C6H14O3	000111-90-0	90
4			Ethanol, 2-(2-ethoxyethoxy)-	134	C6H14O3	000111-90-0	90
5			Ethanol, 2-(2-methoxyethoxy)-	120	C5H12O3	000111-77-3	53



Data Path : Z:\svoasrv\HPCHEM1\BNA\_N\Data\BN060824\  
 Data File : BN031861.D  
 Acq On : 08 Jun 2024 16:31  
 Operator : MA/JU  
 Sample : P2634-01  
 Misc :  
 ALS Vial : 12 Sample Multiplier: 1

Instrument :  
 BNA\_N  
 ClientSampleId :  
 BHBW7

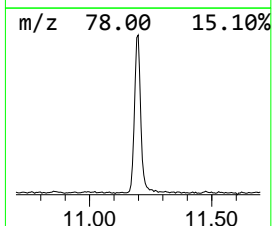
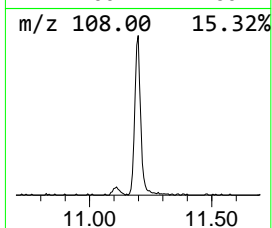
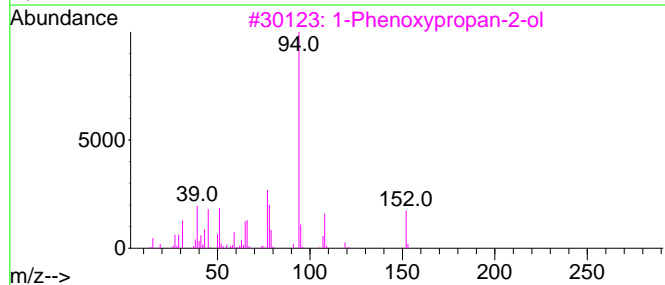
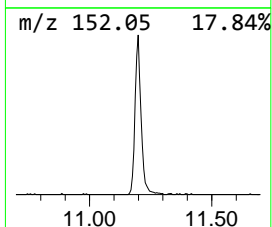
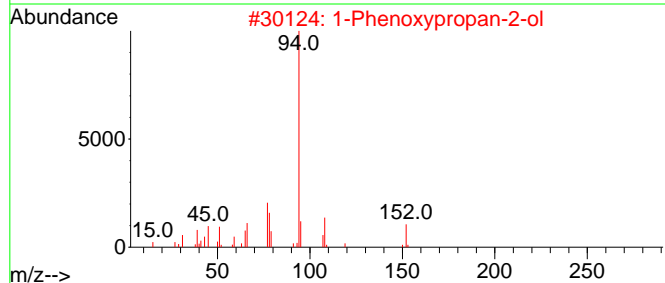
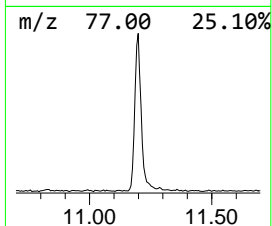
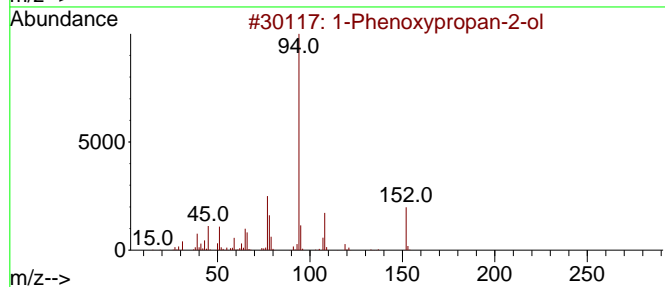
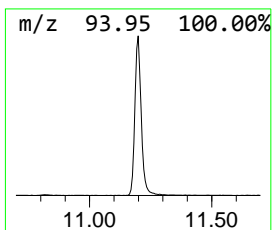
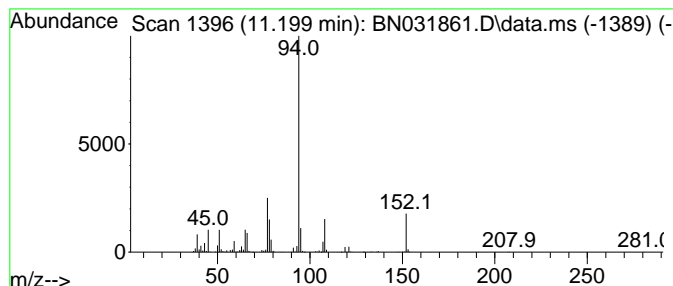
Quant Method : Z:\svoasrv\HPCHEM1\BNA\_N\Methods\SFAM-EPA-BN052924.MA.M  
 Quant Title : SVOA CALIBRATION

TIC Library : C:\Database\NIST20.L  
 TIC Integration Parameters: LSCINT.P

\*\*\*\*\*  
 Peak Number 3 1-Phenoxypropan-2-ol Concentration Rank 4

R.T.	EstConc	Area	Relative to ISTD	R.T.
11.199	4.44 ng/ul	863193	Naphthalene-d8	10.452

Hit#	of	5	Tentative ID	MW	MolForm	CAS#	Qual
1			1-Phenoxypropan-2-ol	152	C9H12O2	000770-35-4	96
2			1-Phenoxypropan-2-ol	152	C9H12O2	000770-35-4	94
3			1-Phenoxypropan-2-ol	152	C9H12O2	000770-35-4	94
4			1-Propanol, 3-phenoxy-	152	C9H12O2	006180-61-6	83
5			1-Propanol, 2-phenoxy-	152	C9H12O2	004169-04-4	64



Data Path : Z:\svoasrv\HPCHEM1\BNA\_N\Data\BN060824\  
 Data File : BN031861.D  
 Acq On : 08 Jun 2024 16:31  
 Operator : MA/JU  
 Sample : P2634-01  
 Misc :  
 ALS Vial : 12 Sample Multiplier: 1

Instrument :  
 BNA\_N  
 ClientSampleId :  
 BHBW7

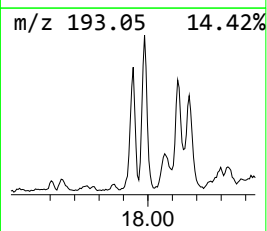
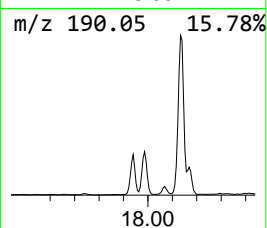
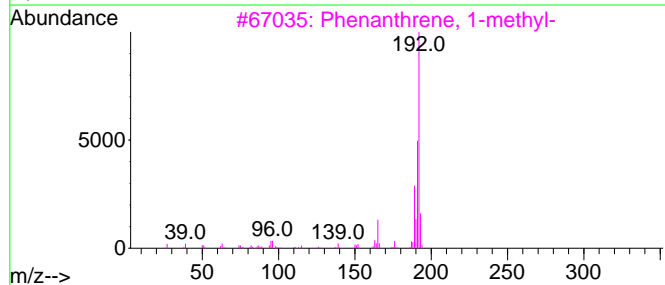
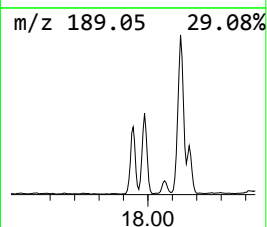
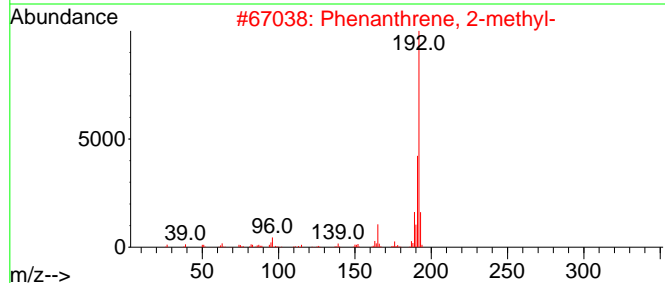
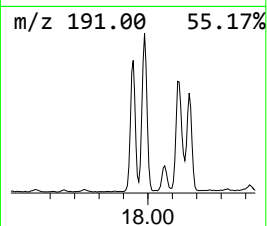
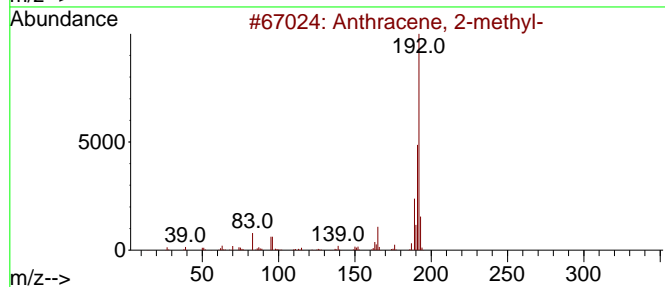
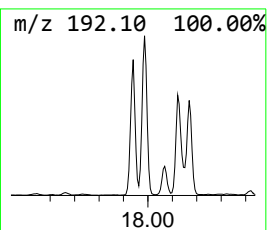
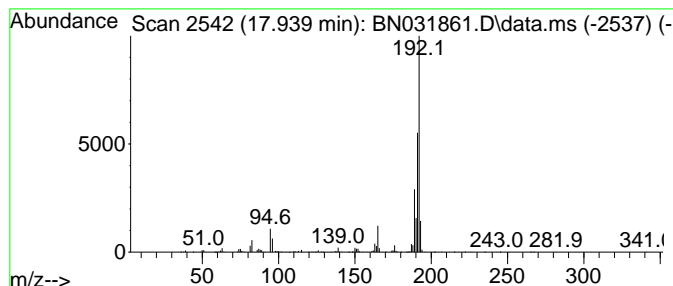
Quant Method : Z:\svoasrv\HPCHEM1\BNA\_N\Methods\SFAM-EPA-BN052924.MA.M  
 Quant Title : SVOA CALIBRATION

TIC Library : C:\Database\NIST20.L  
 TIC Integration Parameters: LSCINT.P

\*\*\*\*\*  
 Peak Number 4 Anthracene, 2-methyl- Concentration Rank 12

R.T.	EstConc	Area	Relative to ISTD	R.T.
17.939	2.11 ng/ul	605815	Phenanthrene-d10	17.063

Hit#	of	5	Tentative ID	MW	MolForm	CAS#	Qual
1			Anthracene, 2-methyl-	192	C15H12	000613-12-7	96
2			Phenanthrene, 2-methyl-	192	C15H12	002531-84-2	96
3			Phenanthrene, 1-methyl-	192	C15H12	000832-69-9	96
4			Phenanthrene, 2-methyl-	192	C15H12	002531-84-2	95
5			Phenanthrene, 2-methyl-	192	C15H12	002531-84-2	95





Data Path : Z:\svoasrv\HPCHEM1\BNA\_N\Data\BN060824\  
 Data File : BN031861.D  
 Acq On : 08 Jun 2024 16:31  
 Operator : MA/JU  
 Sample : P2634-01  
 Misc :  
 ALS Vial : 12 Sample Multiplier: 1

Instrument :  
 BNA\_N  
 ClientSampleId :  
 BHBW7

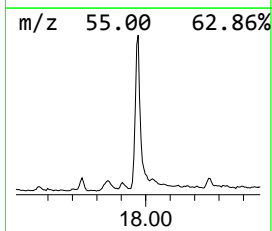
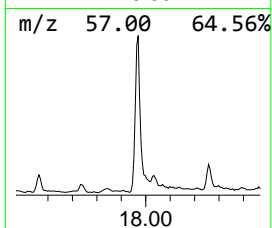
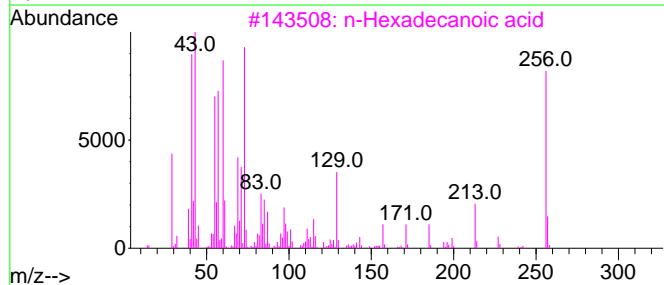
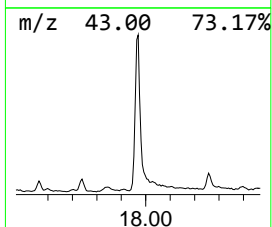
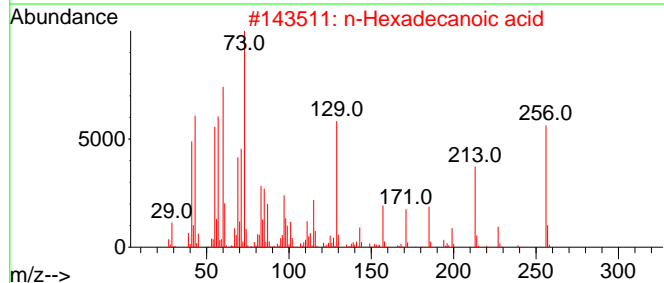
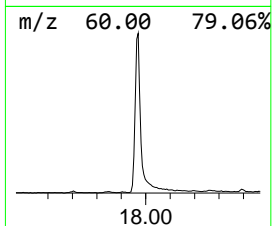
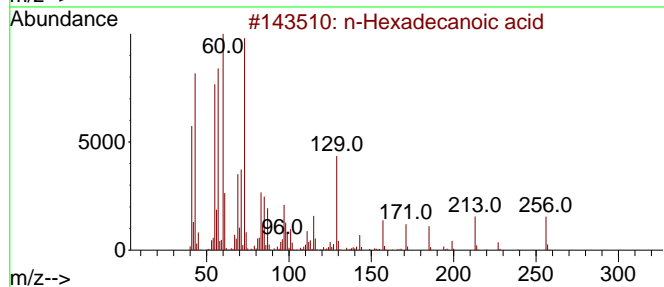
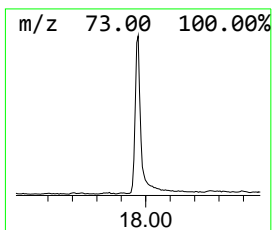
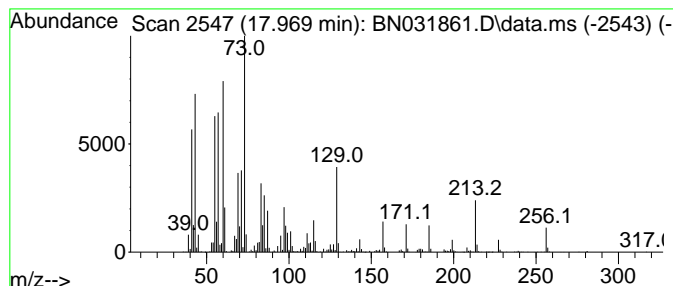
Quant Method : Z:\svoasrv\HPCHEM1\BNA\_N\Methods\SFAM-EPA-BN052924.MA.M  
 Quant Title : SVOA CALIBRATION

TIC Library : C:\Database\NIST20.L  
 TIC Integration Parameters: LSCINT.P

\*\*\*\*\*  
 Peak Number 5 n-Hexadecanoic acid Concentration Rank 1

R.T.	EstConc	Area	Relative to ISTD	R.T.
17.969	9.91 ng/ul	2842600	Phenanthrene-d10	17.063

Hit#	of 5	Tentative ID	MW	MolForm	CAS#	Qual
1		n-Hexadecanoic acid	256	C16H32O2	000057-10-3	99
2		n-Hexadecanoic acid	256	C16H32O2	000057-10-3	99
3		n-Hexadecanoic acid	256	C16H32O2	000057-10-3	99
4		n-Hexadecanoic acid	256	C16H32O2	000057-10-3	98
5		Tetradecanoic acid	228	C14H28O2	000544-63-8	94



Data Path : Z:\svoasrv\HPCHEM1\BNA\_N\Data\BN060824\  
 Data File : BN031861.D  
 Acq On : 08 Jun 2024 16:31  
 Operator : MA/JU  
 Sample : P2634-01  
 Misc :  
 ALS Vial : 12 Sample Multiplier: 1

Instrument :  
 BNA\_N  
 ClientSampleId :  
 BHBW7

Quant Method : Z:\svoasrv\HPCHEM1\BNA\_N\Methods\SFAM-EPA-BN052924.MA.M  
 Quant Title : SVOA CALIBRATION

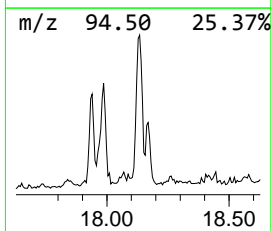
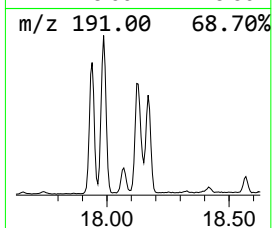
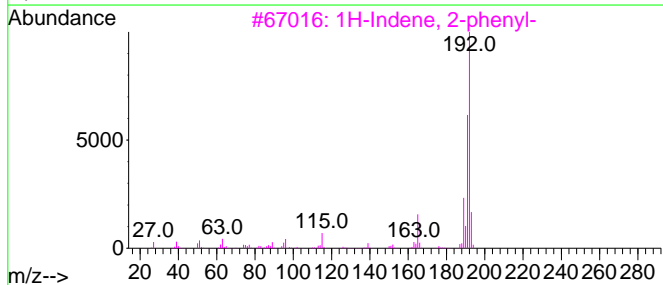
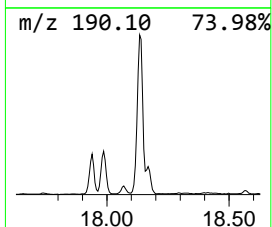
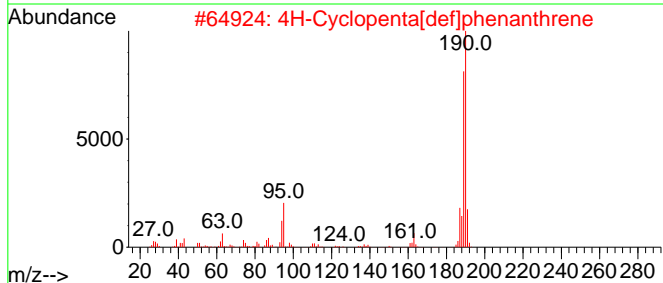
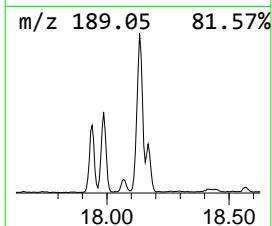
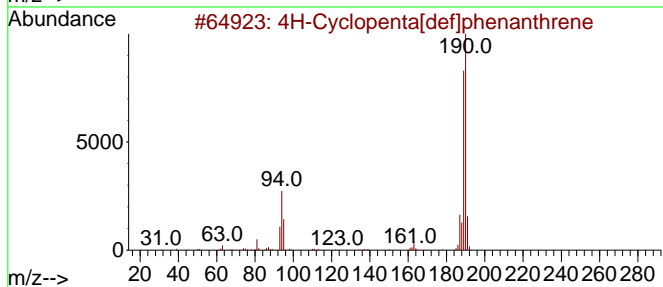
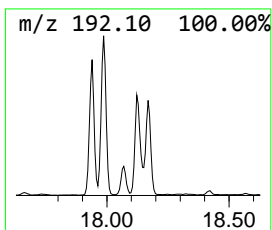
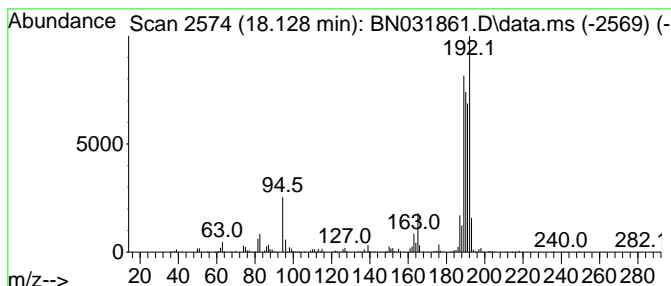
TIC Library : C:\Database\NIST20.L  
 TIC Integration Parameters: LSCINT.P

\*\*\*\*\*  
 Peak Number 6 4H-Cyclopenta[def]phenanthrene Concentration Rank 5

R.T.	EstConc	Area	Relative to ISTD	R.T.
18.128	3.84 ng/ul	1102650	Phenanthrene-d10	17.063

Hit#	of 5	Tentative ID	MW	MolForm	CAS#	Qual
1		4H-Cyclopenta[def]phenanthrene	190	C15H10	000203-64-5	60
2		4H-Cyclopenta[def]phenanthrene	190	C15H10	000203-64-5	55
3		1H-Indene, 2-phenyl-	192	C15H12	004505-48-0	46
4		1H-Cyclopropa[1]phenanthrene,1a,...	192	C15H12	000949-41-7	46
5		Phenanthrene, 1-methyl-	192	C15H12	000832-69-9	46



Data Path : Z:\svoasrv\HPCHEM1\BNA\_N\Data\BN060824\  
 Data File : BN031861.D  
 Acq On : 08 Jun 2024 16:31  
 Operator : MA/JU  
 Sample : P2634-01  
 Misc :  
 ALS Vial : 12 Sample Multiplier: 1

Instrument :  
 BNA\_N  
 ClientSampleId :  
 BHBW7

Quant Method : Z:\svoasrv\HPCHEM1\BNA\_N\Methods\SFAM-EPA-BN052924.MA.M  
 Quant Title : SVOA CALIBRATION

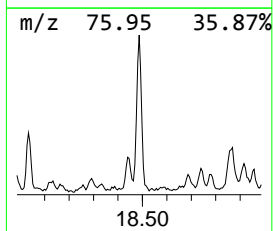
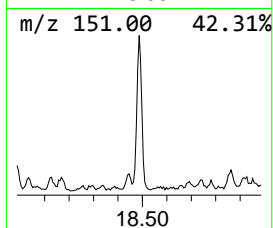
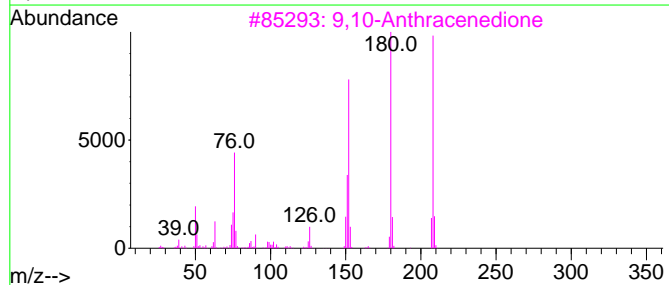
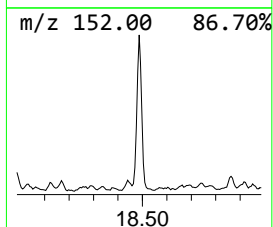
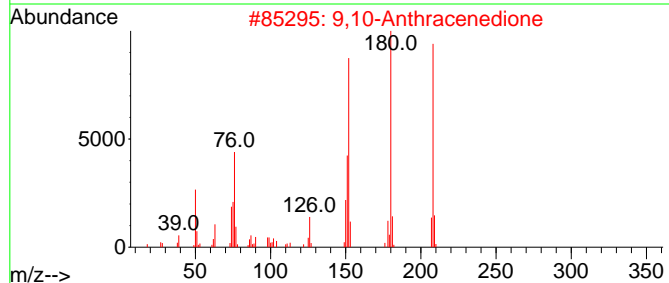
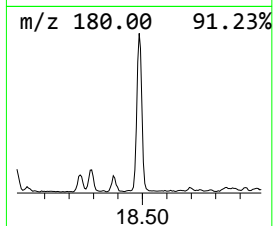
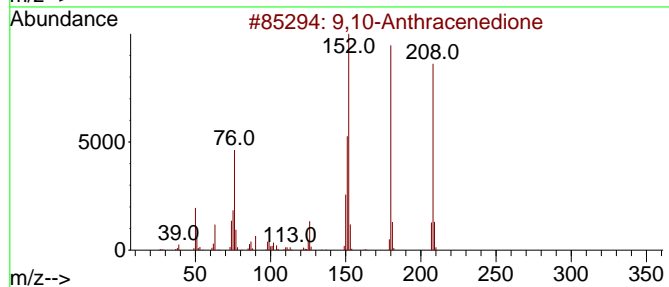
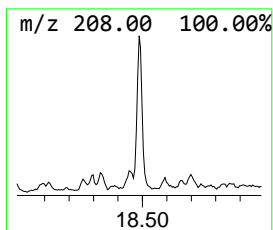
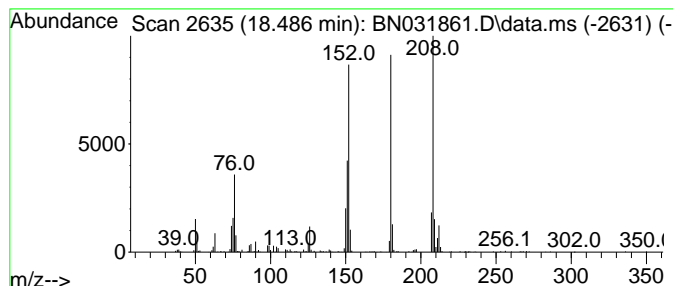
TIC Library : C:\Database\NIST20.L  
 TIC Integration Parameters: LSCINT.P

\*\*\*\*\*  
 Peak Number 7 9,10-Anthracenedione Concentration Rank 13

R.T.	EstConc	Area	Relative to ISTD	R.T.
18.486	2.09 ng/ul	600315	Phenanthrene-d10	17.063

Hit#	of 5	Tentative ID	MW	MolForm	CAS#	Qual
1		9,10-Anthracenedione	208	C14H8O2	000084-65-1	98
2		9,10-Anthracenedione	208	C14H8O2	000084-65-1	98
3		9,10-Anthracenedione	208	C14H8O2	000084-65-1	97
4		9,10-Anthracenedione	208	C14H8O2	000084-65-1	94
5		Benzo[c]cinoline	180	C12H8N2	000230-17-1	92



Data Path : Z:\svoasrv\HPCHEM1\BNA\_N\Data\BN060824\  
 Data File : BN031861.D  
 Acq On : 08 Jun 2024 16:31  
 Operator : MA/JU  
 Sample : P2634-01  
 Misc :  
 ALS Vial : 12 Sample Multiplier: 1

Instrument :  
 BNA\_N  
 ClientSampleId :  
 BHBW7

Quant Method : Z:\svoasrv\HPCHEM1\BNA\_N\Methods\SFAM-EPA-BN052924.MA.M  
 Quant Title : SVOA CALIBRATION

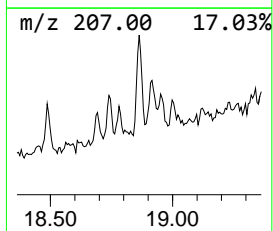
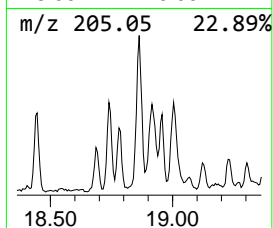
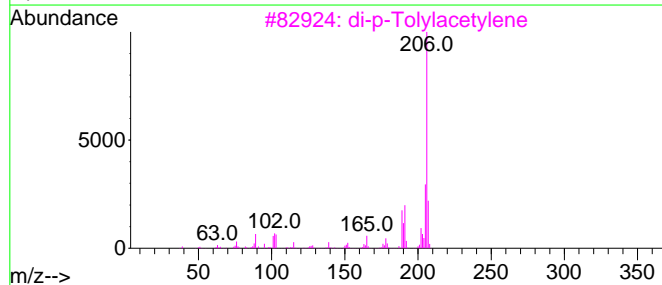
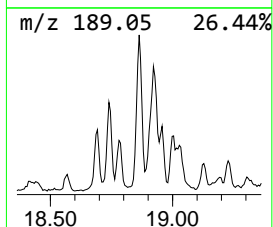
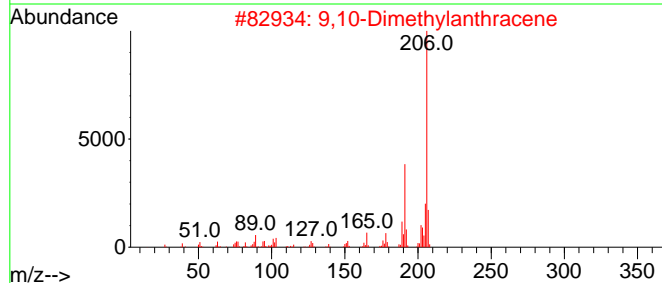
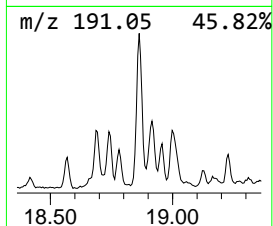
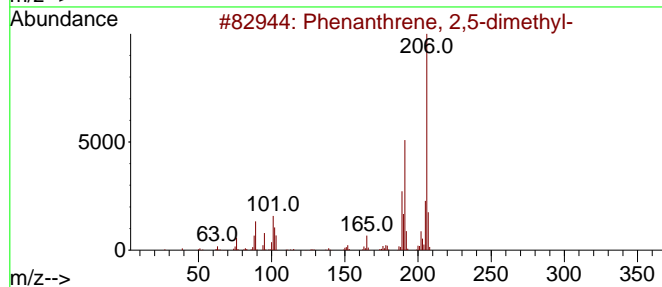
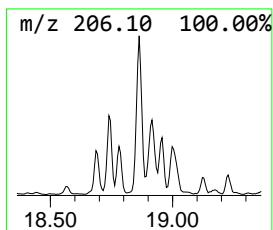
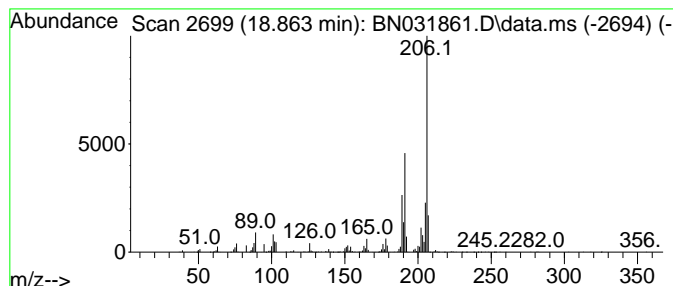
TIC Library : C:\Database\NIST20.L  
 TIC Integration Parameters: LSCINT.P

\*\*\*\*\*  
 Peak Number 8 Phenanthrene, 2,5-dimethyl- Concentration Rank 9

R.T.	EstConc	Area	Relative to ISTD	R.T.
18.863	2.73 ng/ul	783781	Phenanthrene-d10	17.063

Hit#	of	5	Tentative ID	MW	MolForm	CAS#	Qual
1			Phenanthrene, 2,5-dimethyl-	206	C16H14	003674-66-6	97
2			9,10-Dimethylanthracene	206	C16H14	000781-43-1	95
3			di-p-Tolylacetylene	206	C16H14	002789-88-0	94
4			9,10-Dimethylanthracene	206	C16H14	000781-43-1	91
5			Phenanthrene, 1,7-dimethyl-	206	C16H14	000483-87-4	90



Data Path : Z:\svoasrv\HPCHEM1\BNA\_N\Data\BN060824\  
 Data File : BN031861.D  
 Acq On : 08 Jun 2024 16:31  
 Operator : MA/JU  
 Sample : P2634-01  
 Misc :  
 ALS Vial : 12 Sample Multiplier: 1

Instrument :  
 BNA\_N  
 ClientSampleId :  
 BHBW7

Quant Method : Z:\svoasrv\HPCHEM1\BNA\_N\Methods\SFAM-EPA-BN052924.MA.M  
 Quant Title : SVOA CALIBRATION

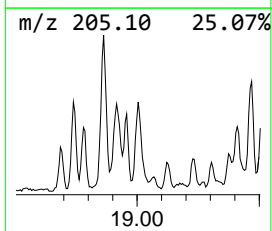
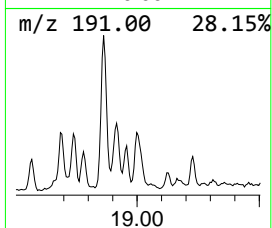
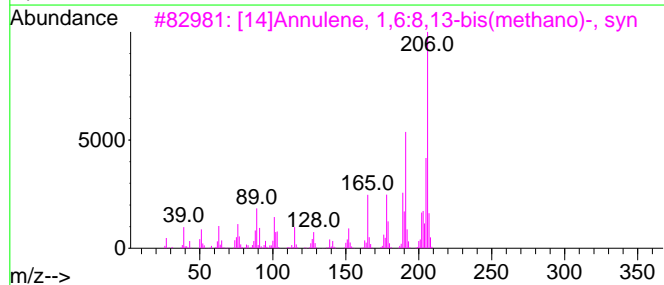
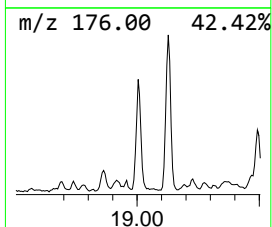
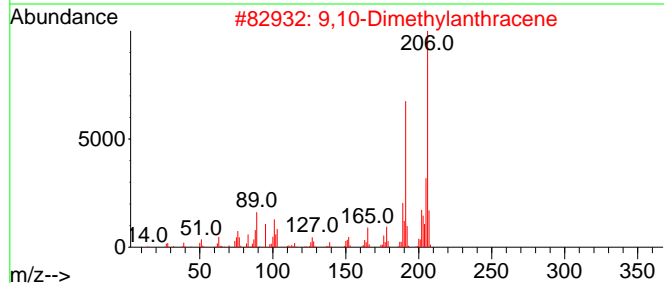
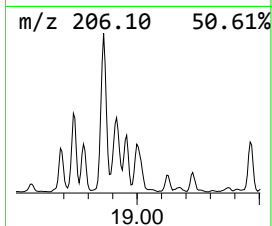
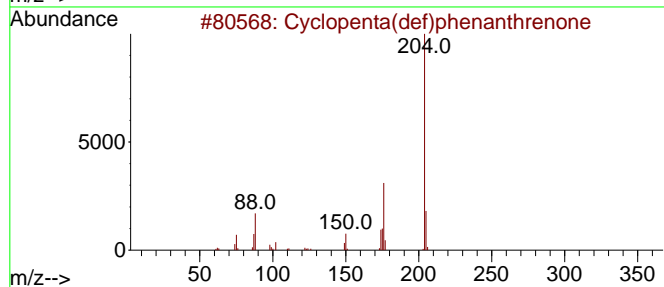
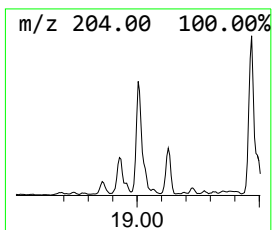
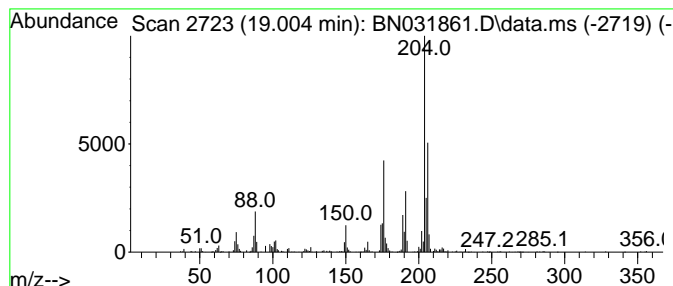
TIC Library : C:\Database\NIST20.L  
 TIC Integration Parameters: LSCINT.P

\*\*\*\*\*  
 Peak Number 9 Cyclopenta(def)phenanthrene Concentration Rank 11

R.T.	EstConc	Area	Relative to ISTD	R.T.
19.004	2.19 ng/ul	626959	Phenanthrene-d10	17.063

Hit#	of 5	Tentative ID	MW	MolForm	CAS#	Qual
1		Cyclopenta(def)phenanthrene	204	C15H8O	005737-13-3	96
2		9,10-Dimethylantracene	206	C16H14	000781-43-1	42
3		[14]Annulene, 1,6:8,13-bis(metha...	206	C16H14	085385-68-8	38
4		1,2,4,8-Tetramethylbicyclo[6.3.0...	204	C15H24	137235-51-9	38
5		Phenanthrene, 2,5-dimethyl-	206	C16H14	003674-66-6	30



Data Path : Z:\svoasrv\HPCHEM1\BNA\_N\Data\BN060824\  
 Data File : BN031861.D  
 Acq On : 08 Jun 2024 16:31  
 Operator : MA/JU  
 Sample : P2634-01  
 Misc :  
 ALS Vial : 12 Sample Multiplier: 1

Instrument :  
 BNA\_N  
 ClientSampleId :  
 BHBW7

Quant Method : Z:\svoasrv\HPCHEM1\BNA\_N\Methods\SFAM-EPA-BN052924.MA.M  
 Quant Title : SVOA CALIBRATION

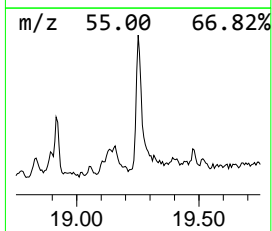
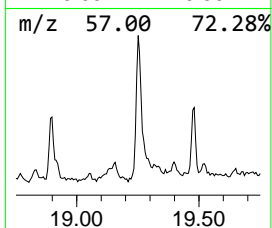
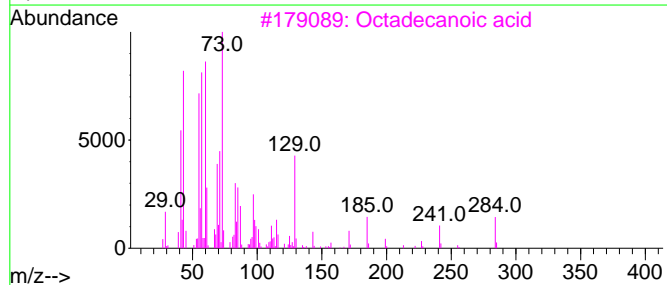
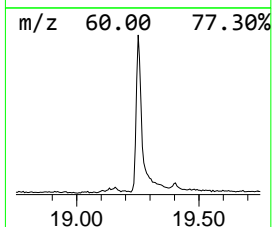
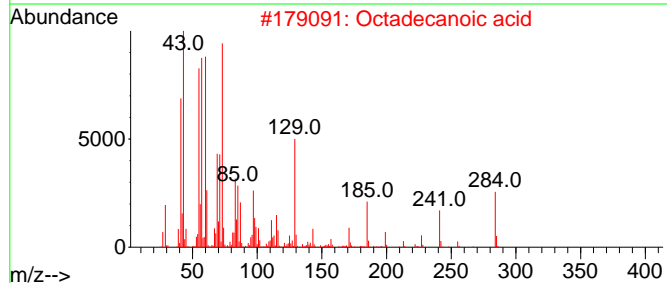
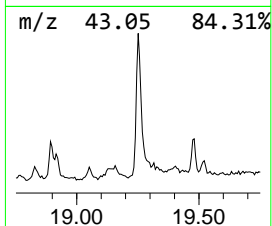
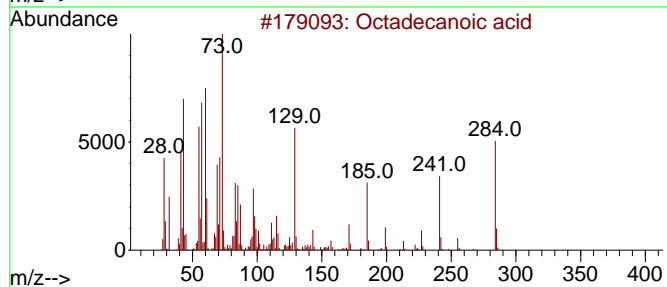
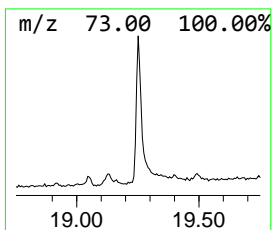
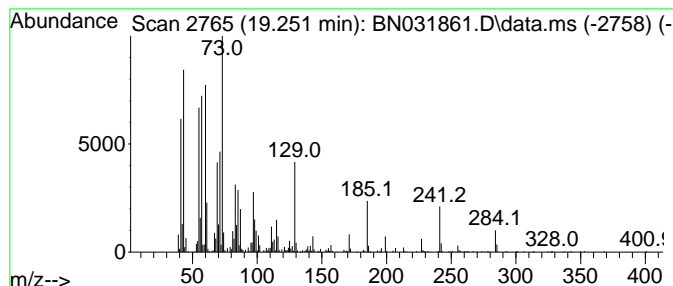
TIC Library : C:\Database\NIST20.L  
 TIC Integration Parameters: LSCINT.P

\*\*\*\*\*  
 Peak Number 10 Octadecanoic acid Concentration Rank 7

R.T.	EstConc	Area	Relative to ISTD	R.T.
19.251	3.23 ng/ul	1161390	Chrysene-d12	21.304

Hit#	of 5	Tentative ID	MW	MolForm	CAS#	Qual
1		Octadecanoic acid	284	C18H36O2	000057-11-4	99
2		Octadecanoic acid	284	C18H36O2	000057-11-4	99
3		Octadecanoic acid	284	C18H36O2	000057-11-4	98
4		Octadecanoic acid	284	C18H36O2	000057-11-4	95
5		Octadecanoic acid	284	C18H36O2	000057-11-4	94



Data Path : Z:\svoasrv\HPCHEM1\BNA\_N\Data\BN060824\  
 Data File : BN031861.D  
 Acq On : 08 Jun 2024 16:31  
 Operator : MA/JU  
 Sample : P2634-01  
 Misc :  
 ALS Vial : 12 Sample Multiplier: 1

Instrument :  
 BNA\_N  
 ClientSampleId :  
 BHBW7

Quant Method : Z:\svoasrv\HPCHEM1\BNA\_N\Methods\SFAM-EPA-BN052924.MA.M  
 Quant Title : SVOA CALIBRATION

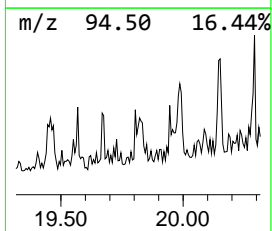
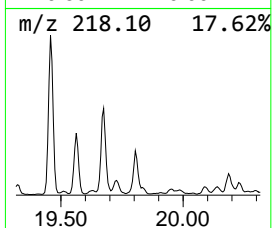
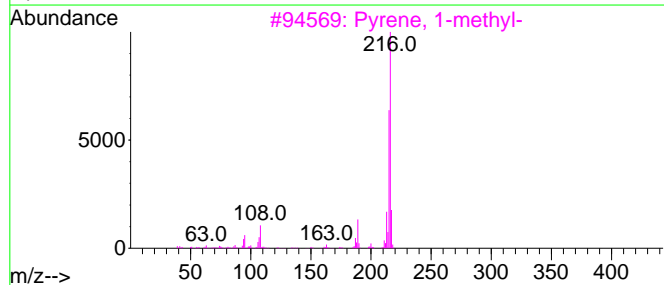
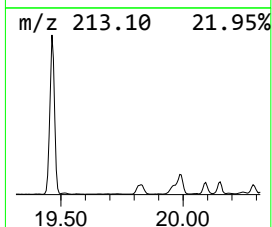
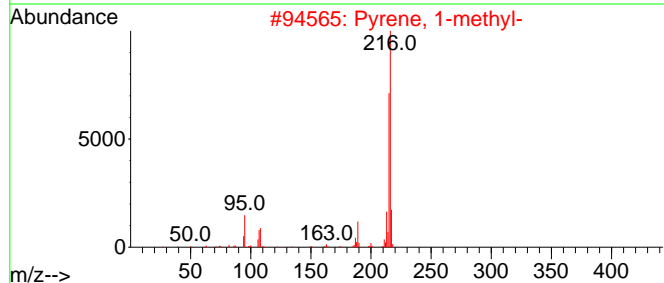
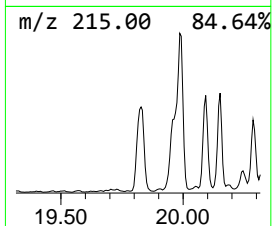
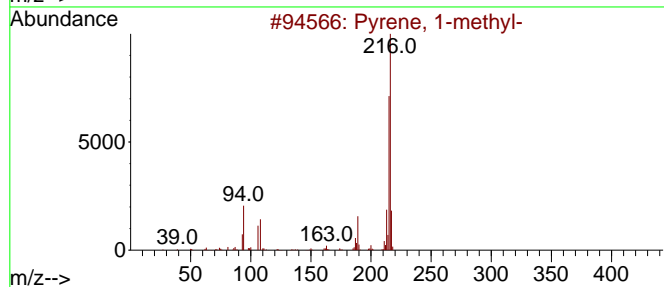
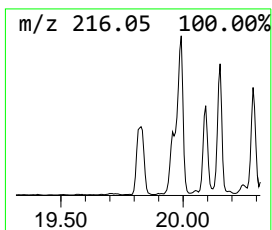
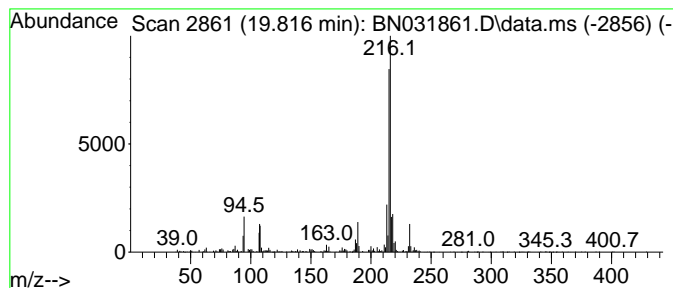
TIC Library : C:\Database\NIST20.L  
 TIC Integration Parameters: LSCINT.P

\*\*\*\*\*  
 Peak Number 11 Pyrene, 1-methyl- Concentration Rank 10

R.T.	EstConc	Area	Relative to ISTD	R.T.
19.816	2.36 ng/ul	847465	Chrysene-d12	21.304

Hit#	of	5	Tentative ID	MW	MolForm	CAS#	Qual
1			Pyrene, 1-methyl-	216	C17H12	002381-21-7	98
2			Pyrene, 1-methyl-	216	C17H12	002381-21-7	96
3			Pyrene, 1-methyl-	216	C17H12	002381-21-7	95
4			11H-Benzo[b]fluorene	216	C17H12	000243-17-4	93
5			11H-Benzo[a]fluorene	216	C17H12	000238-84-6	93



Data Path : Z:\svoasrv\HPCHEM1\BNA\_N\Data\BN060824\  
 Data File : BN031861.D  
 Acq On : 08 Jun 2024 16:31  
 Operator : MA/JU  
 Sample : P2634-01  
 Misc :  
 ALS Vial : 12 Sample Multiplier: 1

Instrument :  
 BNA\_N  
 ClientSampleId :  
 BHBW7

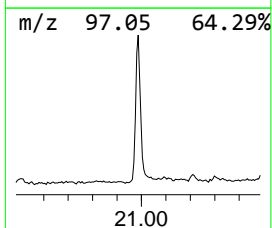
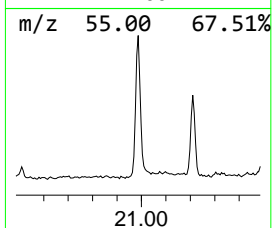
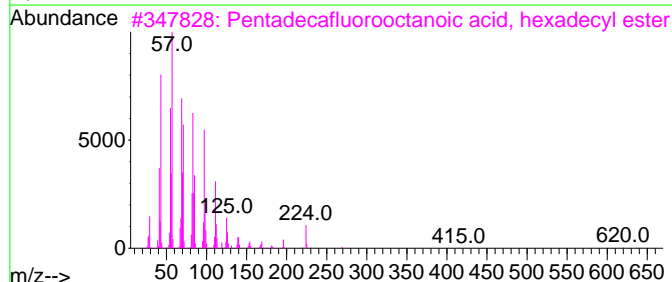
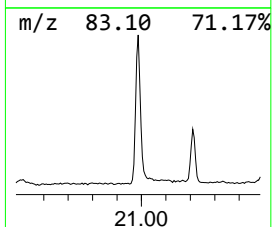
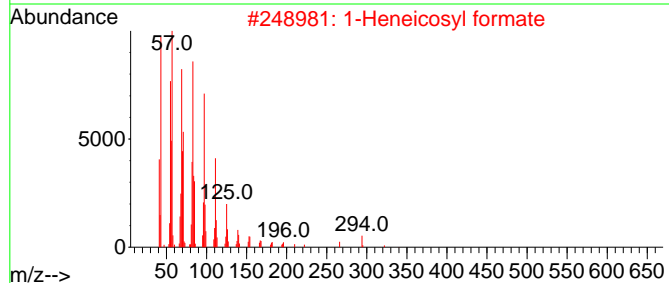
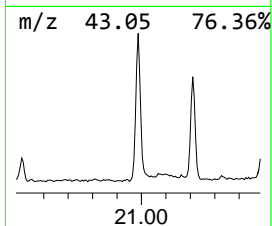
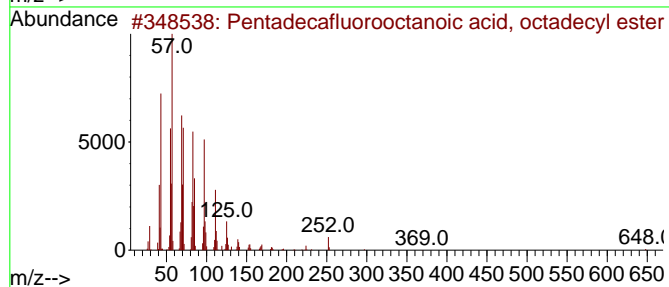
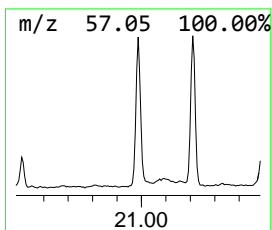
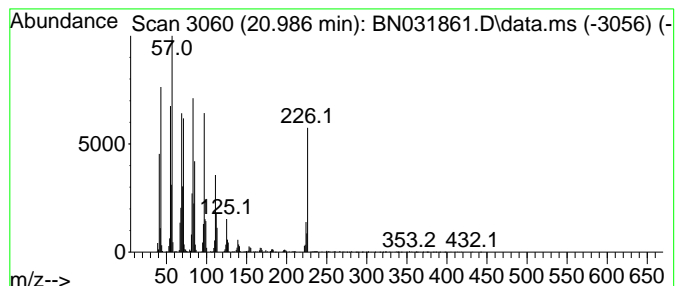
Quant Method : Z:\svoasrv\HPCHEM1\BNA\_N\Methods\SFAM-EPA-BN052924.MA.M  
 Quant Title : SVOA CALIBRATION

TIC Library : C:\Database\NIST20.L  
 TIC Integration Parameters: LSCINT.P

\*\*\*\*\*  
 Peak Number 12 Pentadecafluorooctanoic aci... Concentration Rank 3

R.T.	EstConc	Area	Relative to ISTD	R.T.
20.986	5.72 ng/ul	2055270	Chrysene-d12	21.304

Hit#	of 5	Tentative ID	MW	MolForm	CAS#	Qual
1		Pentadecafluorooctanoic acid, oc...	666	C26H37F15O2	1000406-04-8	93
2		1-Heneicosyl formate	340	C22H44O2	077899-03-7	91
3		Pentadecafluorooctanoic acid, he...	638	C24H33F15O2	1000406-04-6	90
4		Cyclohexadecane	224	C16H32	000295-65-8	90
5		n-Tetracosanol-1	354	C24H50O	000506-51-4	90





Data Path : Z:\svoasrv\HPCHEM1\BNA\_N\Data\BN060824\  
 Data File : BN031861.D  
 Acq On : 08 Jun 2024 16:31  
 Operator : MA/JU  
 Sample : P2634-01  
 Misc :  
 ALS Vial : 12 Sample Multiplier: 1

Instrument :  
 BNA\_N  
 ClientSampleId :  
 BHBW7

Quant Method : Z:\svoasrv\HPCHEM1\BNA\_N\Methods\SFAM-EPA-BN052924.MA.M  
 Quant Title : SVOA CALIBRATION

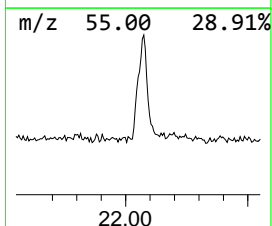
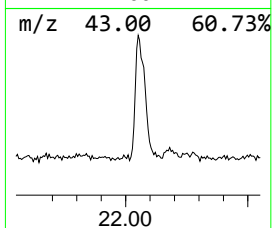
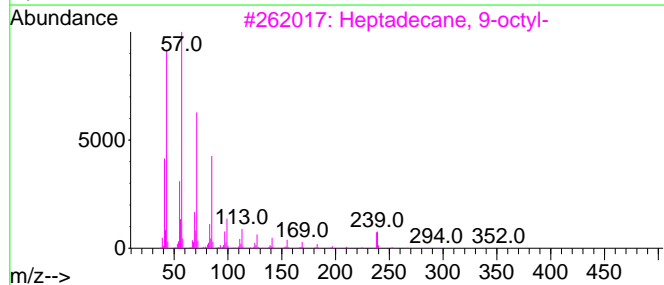
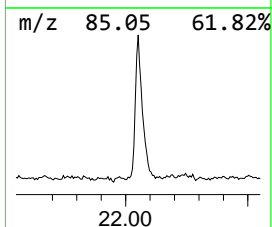
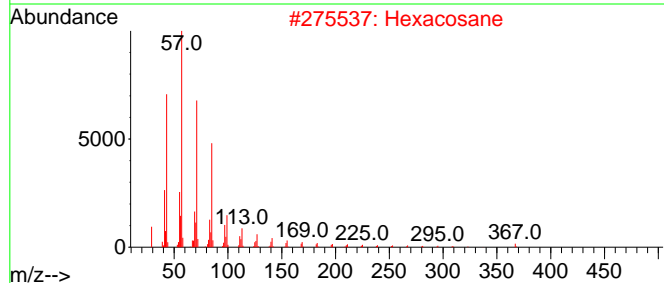
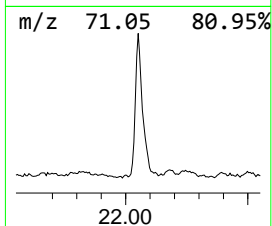
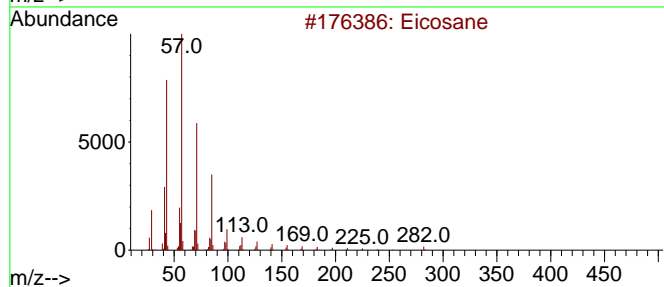
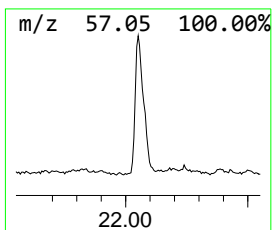
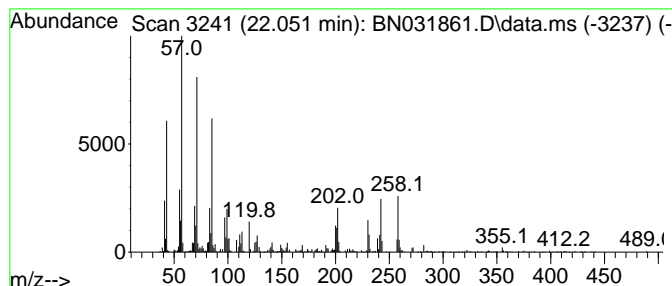
TIC Library : C:\Database\NIST20.L  
 TIC Integration Parameters: LSCINT.P

\*\*\*\*\*  
 Peak Number 13 (DEL) Alkane: Straight-Chai... Concentration Rank 8

R.T.	EstConc	Area	Relative to ISTD	R.T.
22.051	2.92 ng/ul	1049150	Chrysene-d12	21.304

Hit#	of 5	Tentative ID	MW	MolForm	CAS#	Qual
1		Eicosane	282	C20H42	000112-95-8	70
2		Hexacosane	366	C26H54	000630-01-3	55
3		Heptadecane, 9-octyl-	352	C25H52	007225-64-1	49
4		Heneicosane, 11-(1-ethylpropyl)-	366	C26H54	055282-11-6	49
5		Octacosane	394	C28H58	000630-02-4	49



Data Path : Z:\svoasrv\HPCHEM1\BNA\_N\Data\BN060824\  
 Data File : BN031861.D  
 Acq On : 08 Jun 2024 16:31  
 Operator : MA/JU  
 Sample : P2634-01  
 Misc :  
 ALS Vial : 12 Sample Multiplier: 1

Instrument :  
 BNA\_N  
 ClientSampleId :  
 BHBW7

Quant Method : Z:\svoasrv\HPCHEM1\BNA\_N\Methods\SFAM-EPA-BN052924.MA.M  
 Quant Title : SVOA CALIBRATION

TIC Library : C:\Database\NIST20.L  
 TIC Integration Parameters: LSCINT.P

TIC Top Hit name	RT	EstConc	Units	Response	--Internal Standard--			
					#	RT	Resp	Conc
Propylene Glycol	3.446	6.3	ng/ul	832191	1	7.669	2622080	20.0
Ethanol, 2-(2-e...	7.275	3.3	ng/ul	436470	1	7.669	2622080	20.0
1-Phenoxypropan...	11.199	4.4	ng/ul	863193	2	10.452	3889300	20.0
Anthracene, 2-m...	17.939	2.1	ng/ul	605815	4	17.063	5736510	20.0
n-Hexadecanoic ...	17.969	9.9	ng/ul	2842600	4	17.063	5736510	20.0
4H-Cyclopenta[d...	18.128	3.8	ng/ul	1102650	4	17.063	5736510	20.0
9,10-Anthracene...	18.486	2.1	ng/ul	600315	4	17.063	5736510	20.0
Phenanthrene, 2...	18.863	2.7	ng/ul	783781	4	17.063	5736510	20.0
Cyclopenta(def)...	19.004	2.2	ng/ul	626959	4	17.063	5736510	20.0
Octadecanoic acid	19.251	3.2	ng/ul	1161390	5	21.304	7185300	20.0
Pyrene, 1-methyl-	19.816	2.4	ng/ul	847465	5	21.304	7185300	20.0
Pentadecafluoro...	20.986	5.7	ng/ul	2055270	5	21.304	7185300	20.0
(DEL) Alkane: S...	22.051	2.9	ng/ul	1049150	5	21.304	7185300	20.0