

Data Path : Z:\SVOASRV\HPCHEM1\BNA N\DATA\BN061219\
 Data File : BN006293.D
 Acq On : 12 Jun 2019 22:30
 Operator : JU/SJ
 Sample : K3231-14
 Misc :
 ALS Vial : 21 Sample Multiplier: 1

Instrument :
 BNA_N
 ClientSampleId :

Quant Time: Jun 13 01:22:44 2019
 Quant Method : Z:\SVOASRV\HPCHEM1\BNA N\METHODS\SOM-EPA-SIM-BN053019.M
 Quant Title : ASP BNA STANDARDS FOR 5 POINT CALIBRATION
 QLast Update : Wed Jun 12 17:24:11 2019
 Response via : Initial Calibration

Internal Standards	R.T.	QIon	Response	Conc	Units	Dev(Min)
1) 1,4-Dichlorobenzene-d4	7.64	152	5879	0.40	ng/ul	0.00
2) Naphthalene-d8	10.42	136	23948	0.40	ng/ul	0.00
6) Acenaphthene-d10	14.30	164	12774	0.40	ng/ul	0.00
10) Phenanthrene-d10	17.05	188	24777	0.40	ng/ul	0.00
16) Chrysene-d12	21.27	240	14860	0.40	ng/ul	-0.02
20) Perylene-d12	23.50	264	18507	0.40	ng/ul	-0.05

System Monitoring Compounds	R.T.	QIon	Response	Conc	Units	Dev(Min)
4) 2-Methylnaphthalene-d10	12.02	152	4351	0.12	ng/ul	0.00
14) Fluoranthene-d10	19.09	212	9137	0.14	ng/ul	0.00

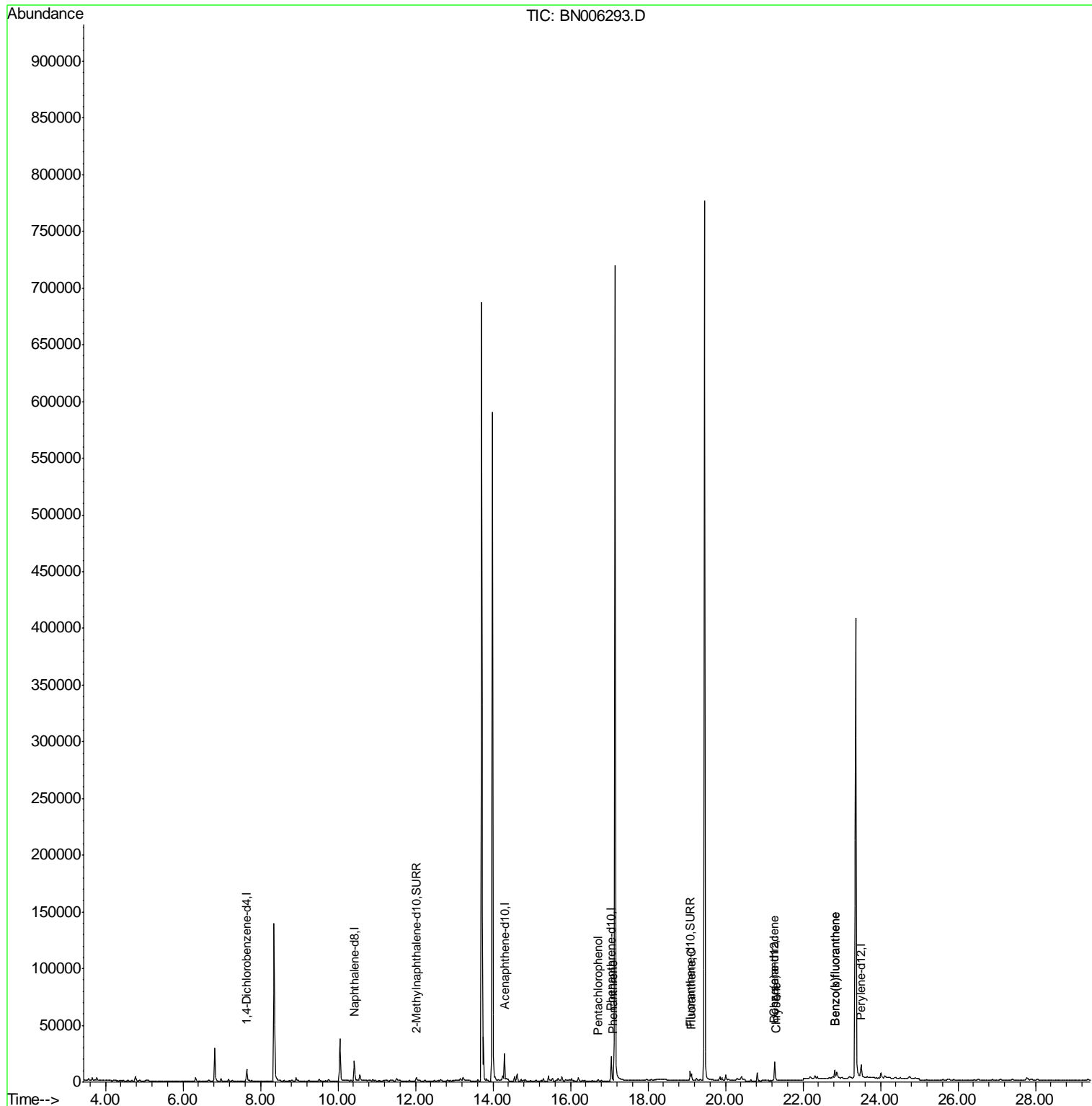
Target Compounds	R.T.	QIon	Response	Conc	Units	Ovalue
11) Pentachlorophenol	16.71	266	1095	0.174	ng/ul	99
12) Phenanthrene	17.09	178	1983	0.025	ng/ul#	82
15) Fluoranthene	19.12	202	4337	0.049	ng/ul	73
18) Benzo(a)anthracene	21.25	228	1438	0.022	ng/ul#	79
19) Chrysene	21.30	228	2219	0.036	ng/ul#	83
21) Benzo(b)fluoranthene	22.83	252	4504	0.058	ng/ul#	1
22) Benzo(k)fluoranthene	22.83	252	4504	0.060	ng/ul#	1

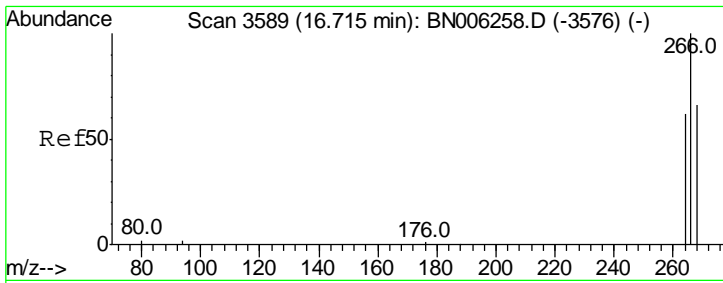
(#) = qualifier out of range (m) = manual integration (+) = signals summed

Data Path : Z:\SVOASRV\HPCHEM1\BNA N\DATA\BN061219\
 Data File : BN006293.D
 Acq On : 12 Jun 2019 22:30
 Operator : JU/SJ
 Sample : K3231-14
 Misc :
 ALS Vial : 21 Sample Multiplier: 1

Instrument :
 BNA_N
 ClientSampleId :

Quant Time: Jun 13 01:22:44 2019
 Quant Method : Z:\SVOASRV\HPCHEM1\BNA N\METHODS\SOM-EPA-SIM-BN053019.M
 Quant Title : ASP BNA STANDARDS FOR 5 POINT CALIBRATION
 QLast Update : Wed Jun 12 17:24:11 2019
 Response via : Initial Calibration

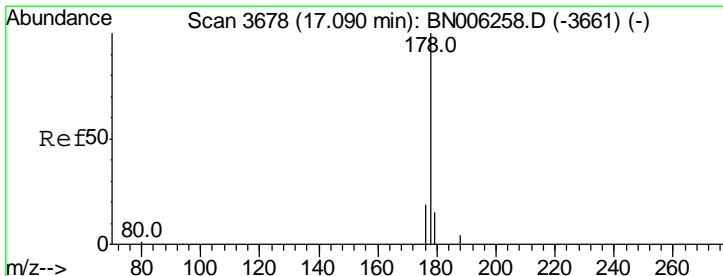
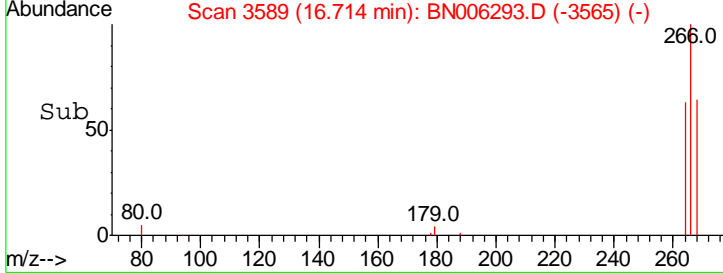
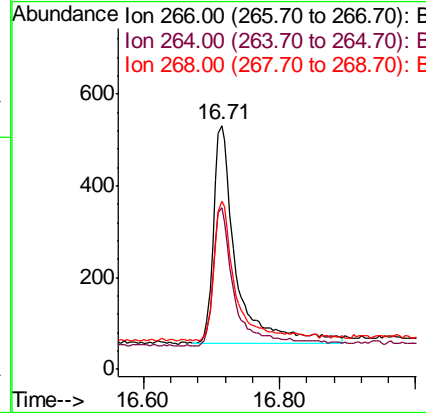
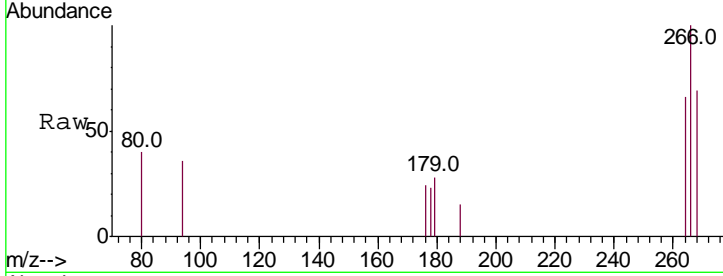




#11
 Pentachlorophenol
 Concen: 0.174 ng/ul
 RT: 16.71 min Scan# 3589
 Delta R.T. -0.00 min
 Lab File: BN006293.D
 Acq: 12 Jun 2019 22:30

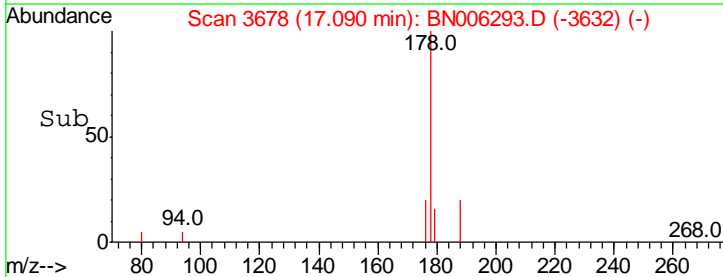
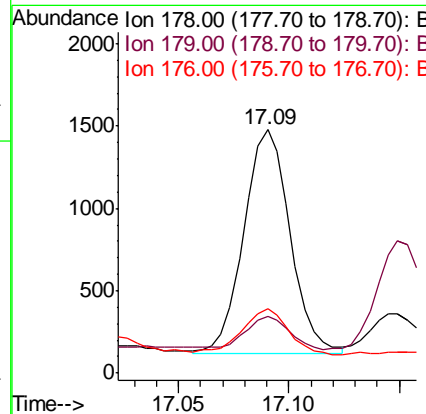
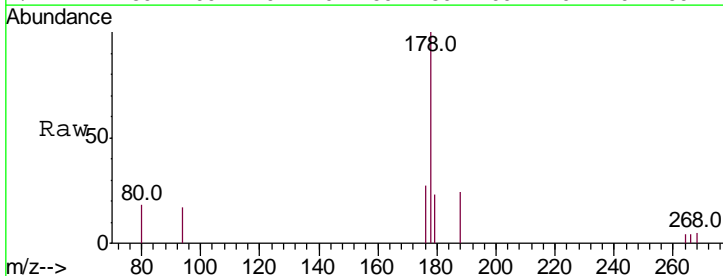
Instrument :
 BNA_N
 ClientSampled :

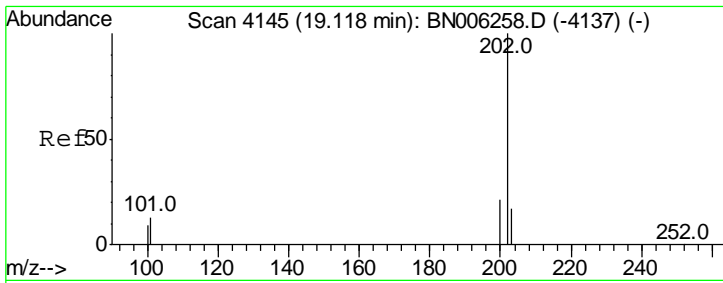
Tgt Ion	Resp	Lower	Upper
266	1095		
264	64.1	50.3	75.5
268	63.7	51.3	76.9



#12
 Phenanthrene
 Concen: 0.025 ng/ul
 RT: 17.09 min Scan# 3678
 Delta R.T. -0.00 min
 Lab File: BN006293.D
 Acq: 12 Jun 2019 22:30

Tgt Ion	Resp	Lower	Upper
178	1983		
179	23.4	12.3	18.5#
176	26.5	15.3	22.9#

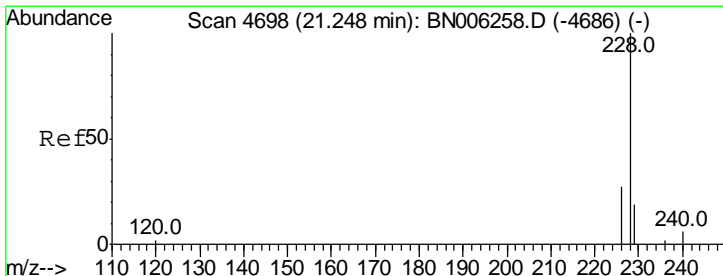
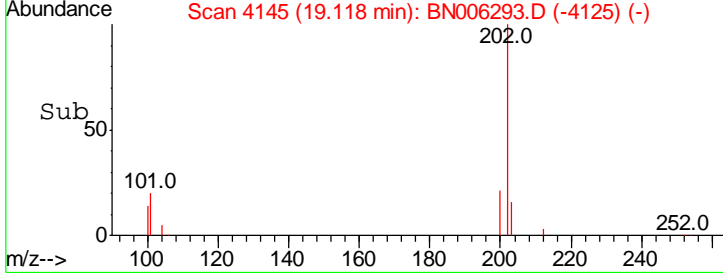
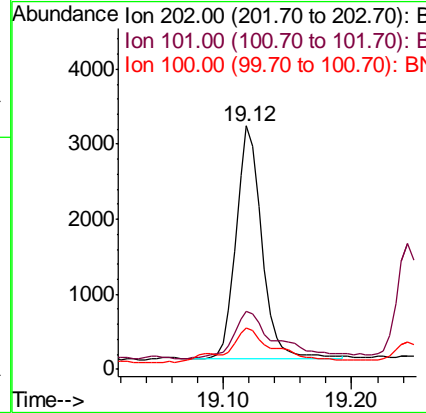
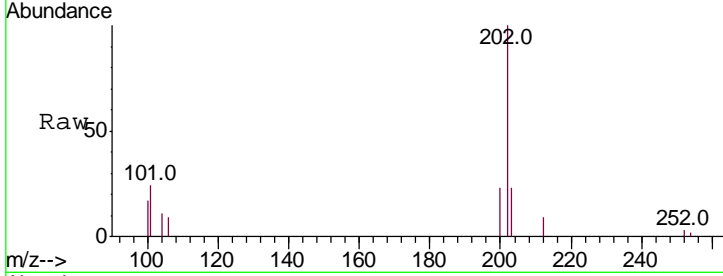




#15
 Fluoranthene
 Concen: 0.049 ng/ul
 RT: 19.12 min Scan# 4145
 Delta R.T. -0.01 min
 Lab File: BN006293.D
 Acq: 12 Jun 2019 22:30

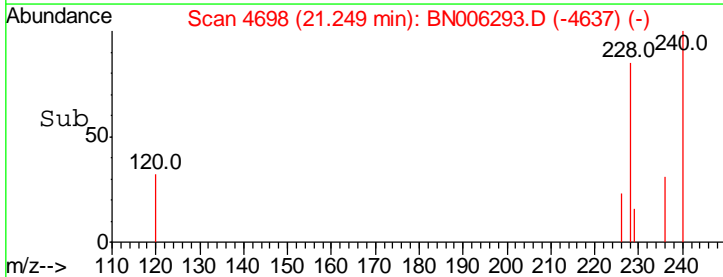
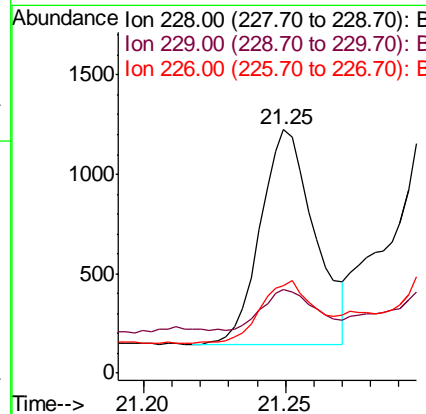
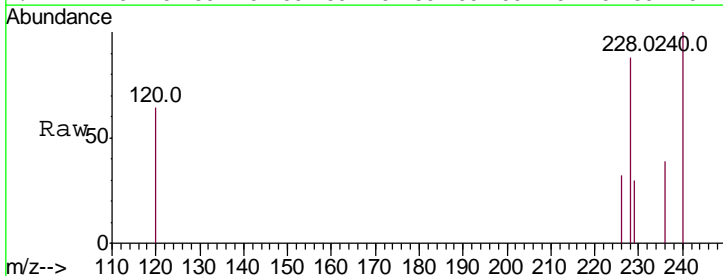
Instrument :
 BNA_N
 ClientSampled :

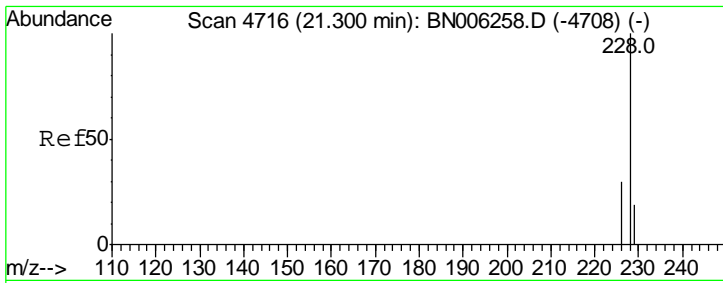
Tgt Ion	Ratio	Lower	Upper
202	100		
101	23.7	0.0	32.1
100	17.0	0.0	28.7



#18
 Benzo(a)anthracene
 Concen: 0.022 ng/ul
 RT: 21.25 min Scan# 4698
 Delta R.T. -0.02 min
 Lab File: BN006293.D
 Acq: 12 Jun 2019 22:30

Tgt Ion	Ratio	Lower	Upper
228	100		
229	34.1	16.5	24.7#
226	36.2	22.8	34.2#

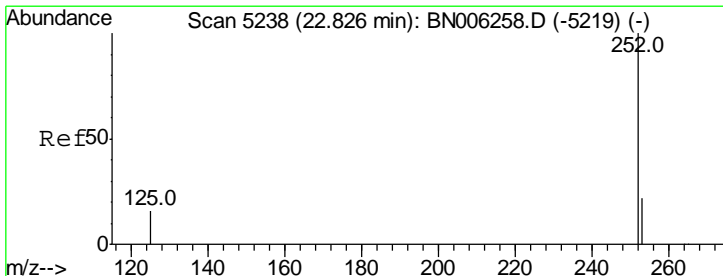
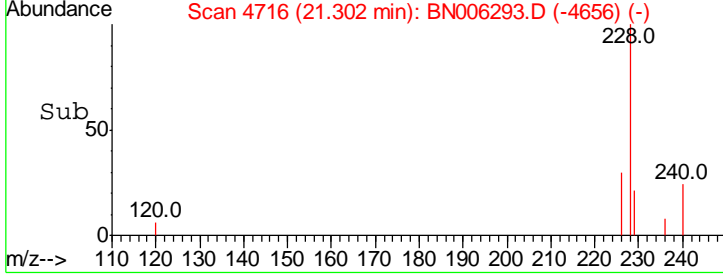
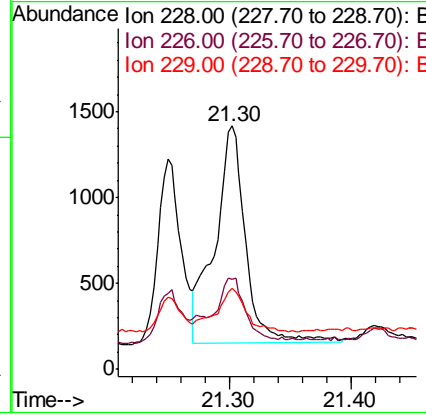
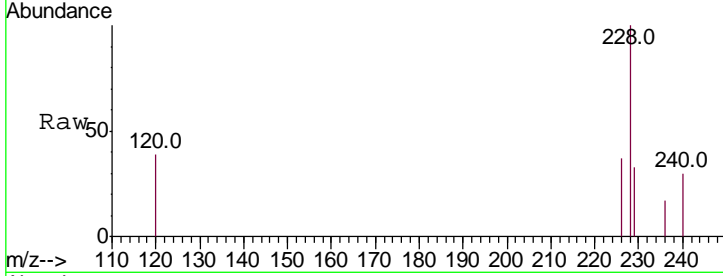




#19
 Chrysene
 Concen: 0.036 ng/ul
 RT: 21.30 min Scan# 4716
 Delta R.T. -0.02 min
 Lab File: BN006293.D
 Acq: 12 Jun 2019 22:30

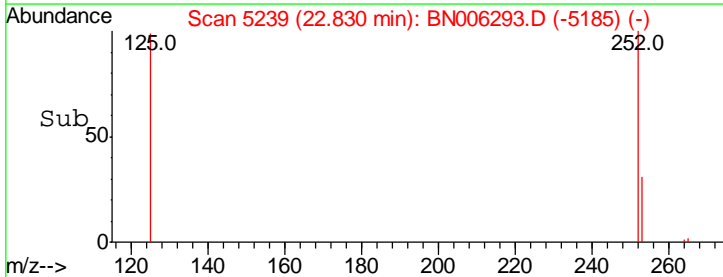
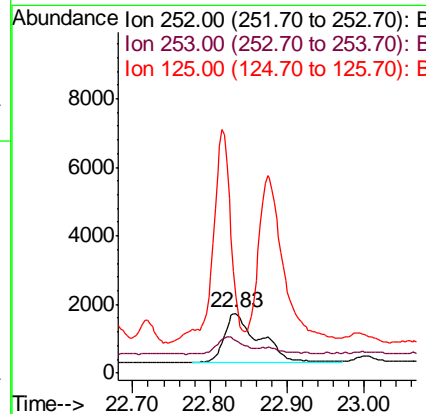
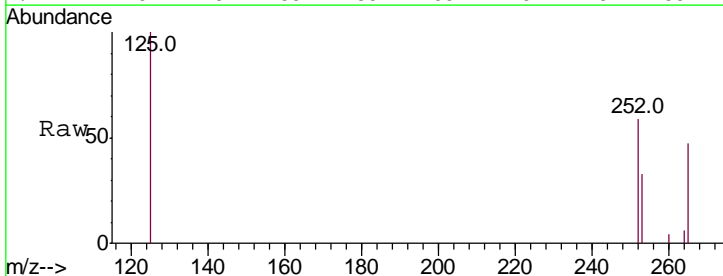
Instrument :
 BNA_N
 ClientSampled :

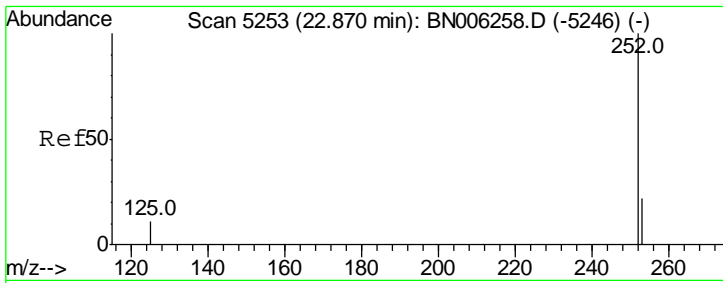
Tgt Ion	Resp	Lower	Upper
228	100		
226	37.2	25.0	37.6
229	33.2	16.3	24.5#



#21
 Benzo(b)fluoranthene
 Concen: 0.058 ng/ul
 RT: 22.83 min Scan# 5239
 Delta R.T. -0.04 min
 Lab File: BN006293.D
 Acq: 12 Jun 2019 22:30

Tgt Ion	Resp	Lower	Upper
252	100		
253	56.7	0.0	51.4#
125	170.4	0.0	41.0#





#22
 Benzo(k)fluoranthene
 Concen: 0.060 ng/ul
 RT: 22.83 min Scan# 5239
 Delta R.T. -0.09 min
 Lab File: BN006293.D
 Acq: 12 Jun 2019 22:30

Instrument :
 BNA_N
 ClientSampled :

Tot Ion	Ratio	Lower	Upper
252	100		
253	56.7	20.3	30.5#
125	170.4	14.3	21.5#

