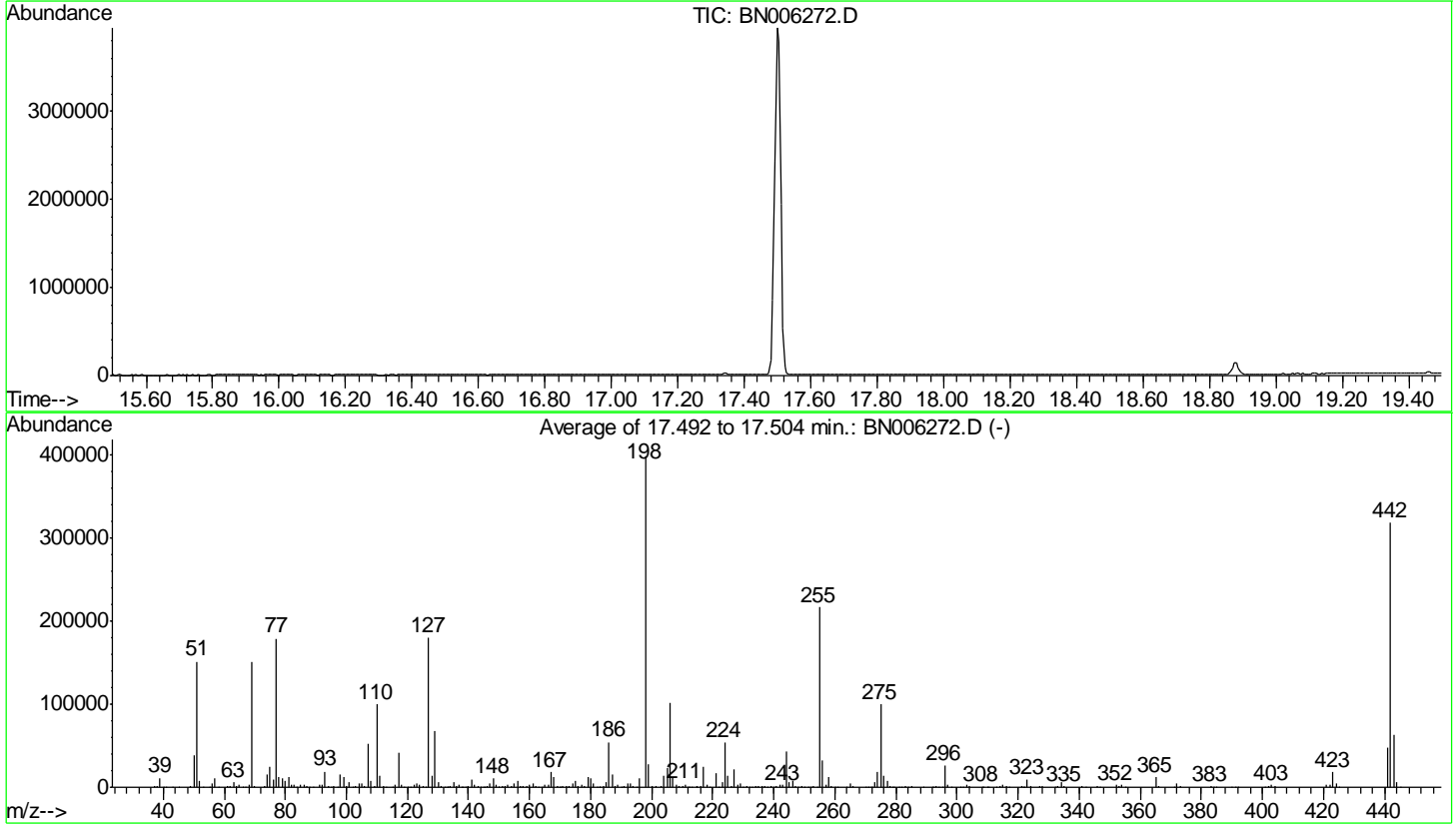


Data Path : Z:\svoasrv\HPCHEM1\BNA_N\Data\BN061219\
 Data File : BN006272.D
 Acq On : 12 Jun 2019 08:45
 Operator : JU/SJ
 Sample : DFTPP90
 Misc :
 ALS Vial : 1 Sample Multiplier: 1

Instrument :
 BNA_N
 ClientSampleId :

Integration File: rteint.p

Method : Z:\SVOASRV\HPCHEM1\BNA_N\METHODS\SOM-EPA-SIM-BN053019.M
 Title : ASP BNA STANDARDS FOR 5 POINT CALIBRATION
 Last Update : Thu Jun 13 11:20:30 2019



AutoFind: Scans 2466, 2467, 2468; Background Corrected with Scan 2460

Target Mass	Rel. to Mass	Lower Limit%	Upper Limit%	Rel. Abn%	Raw Abn	Result Pass/Fail
51	198	10	80	37.9	151360	PASS
68	69	0.00	2	1.8	2652	PASS
69	198	0.00	100	37.7	150282	PASS
70	69	0.00	2	0.6	930	PASS
127	198	10	80	45.1	180074	PASS
197	198	0.00	2	0.0	0	PASS
198	198	100	100	100.0	399125	PASS
199	198	5	9	6.9	27520	PASS
275	198	10	60	25.0	99856	PASS
365	198	1	100	2.9	11667	PASS
441	198	0.01	100	12.2	48589	PASS
442	198	50	100	79.9	318741	PASS
443	442	15	24	19.8	63085	PASS

m/z	Abundance
39.00	390.0
40.00	3074.0
41.00	444.0
44.00	3718.0
49.00	375.0
55.00	318.0
73.00	429.0
83.90	336.0
91.00	407.0
207.00	1368.0

Instrument :
BNA_N
ClientSampleId :

m/z	Abundance
37.00	819.0
38.00	1434.0
39.00	9505.0
40.00	3024.0
41.00	683.0
43.10	436.0
44.00	3409.0
49.00	1129.0
50.00	32816.0
51.00	131072.0
52.00	6342.0
53.00	337.0
55.00	918.0
56.00	3705.0
57.00	8746.0
57.90	365.0
61.00	1715.0
62.00	1835.0
63.00	4826.0
63.90	662.0
65.00	2529.0
67.00	326.0
68.00	2273.0
69.00	126112.0
70.00	702.0
73.00	1137.0
74.00	12621.0
75.00	20816.0
76.10	6342.0
77.00	149568.0
78.00	11430.0
79.00	9767.0
80.00	6948.0
81.00	10051.0
82.00	2586.0
83.00	2766.0
83.80	509.0
85.00	1750.0
86.00	3060.0
87.00	1321.0
87.90	643.0
89.00	366.0
91.00	2486.0
92.00	2523.0
93.00	15327.0
93.90	1120.0
95.10	345.0
96.00	745.0
97.20	366.0
98.00	12277.0
99.00	10914.0
100.00	829.0
101.00	5679.0
102.00	350.0
102.90	1759.0
104.00	3853.0
105.00	3186.0
106.00	1065.0
107.00	41584.0
108.00	6605.0
109.00	1395.0
110.00	78336.0
111.00	11917.0
112.00	1522.0
112.90	535.0
116.00	1891.0
117.00	33776.0
118.00	3132.0
119.00	561.0
120.00	617.0
122.00	2724.0
123.00	3976.0
124.00	2017.0
125.00	1871.0
126.10	1051.0
127.00	141120.0
128.00	10704.0
129.00	50936.0
130.00	4593.0
131.00	916.0
132.00	348.0
133.00	389.0
134.00	1588.0
135.00	4515.0
136.00	1911.0
137.00	2882.0
137.90	550.0
138.90	421.0
140.00	878.0
141.00	6991.0
142.00	2194.0

Instrument :
BNA_N
ClientSampleId :

143.00	1969.0
143.90	339.0
144.90	414.0
146.00	1475.0
147.00	3286.0
148.00	8247.0
149.00	1853.0
149.90	548.0
151.10	840.0
151.90	499.0
153.00	2191.0
154.00	1823.0
155.00	4086.0
156.00	5426.0
157.00	1087.0
158.00	1157.0
158.90	905.0
160.00	2266.0
161.00	3351.0
161.90	989.0
162.90	376.0
163.90	519.0
165.00	2317.0
166.00	1984.0
167.00	14087.0
168.00	10121.0
169.00	1438.0
169.90	497.0
170.90	761.0
171.90	1157.0
173.00	1856.0
174.00	2640.0
175.00	5421.0
176.00	1563.0
177.00	2671.0
177.90	661.0
179.00	9840.0
180.00	6993.0
181.00	3543.0
182.00	478.0
182.80	346.0
184.00	941.0
185.00	4649.0
186.00	41248.0
187.00	11270.0
188.00	1220.0
188.90	2252.0
190.00	411.0
191.00	979.0
191.90	2825.0
193.00	3616.0
194.00	986.0
195.10	507.0
196.00	7413.0
198.00	286528.0
199.00	20584.0
200.00	1627.0
201.50	1176.0
202.90	1438.0
204.00	9703.0
205.00	16140.0
206.00	71128.0
207.00	10535.0
208.00	2505.0
208.90	901.0
210.00	1187.0
211.00	2540.0
214.80	610.0
215.90	1691.0
217.00	17232.0
217.90	2563.0
221.00	12047.0
221.80	2385.0
223.00	3923.0
224.00	36728.0
225.00	9991.0
226.00	1432.0
227.00	14969.0
228.00	2604.0
228.90	2832.0
230.00	622.0
230.90	1360.0
233.90	920.0
235.00	961.0
235.90	750.0
237.00	1888.0
238.00	340.0
239.00	444.0
239.90	663.0
241.00	1051.0
242.00	1910.0
243.00	1958.0
244.00	28472.0
245.00	4516.0
246.00	5174.0

Instrument :
BNA_N
ClientSampleId :

246.90	1176.0
248.00	311.0
248.90	1396.0
251.90	363.0
253.00	577.0
254.10	1251.0
255.00	141376.0
256.00	21136.0
257.00	1947.0
258.00	7762.0
258.90	1236.0
261.00	360.0
265.00	2989.0
266.00	501.0
271.90	360.0
273.00	4473.0
274.00	11595.0
275.00	65112.0
276.00	9304.0
277.00	5340.0
277.90	918.0
281.00	341.0
283.00	601.0
284.10	387.0
285.00	933.0
293.00	1029.0
294.00	347.0
295.10	360.0
296.00	15814.0
297.00	2380.0
302.00	305.0
303.00	1768.0
304.10	574.0
314.10	841.0
315.00	1896.0
316.00	988.0
321.00	484.0
321.80	370.0
323.00	5868.0
324.00	1112.0
326.90	1050.0
328.00	567.0
332.00	347.0
332.90	551.0
334.10	3359.0
335.00	1201.0
341.00	550.0
346.00	857.0
352.10	1789.0
353.00	1294.0
354.00	1793.0
354.90	317.0
365.00	6788.0
365.90	1013.0
371.00	631.0
372.00	2681.0
372.90	587.0
383.00	825.0
383.90	385.0
390.00	318.0
402.00	1240.0
403.00	1473.0
404.00	528.0
421.00	1554.0
422.00	1425.0
423.00	10031.0
424.00	3041.0
424.90	397.0
441.10	24128.0
442.00	158912.0
443.00	32960.0
444.10	3210.0

Instrument :
BNA_N
ClientSampleId :

m/z	Abundance
37.00	1019.0
38.00	1663.0
39.00	13432.0
40.00	3124.0
41.10	592.0
43.10	432.0
44.00	3764.0
45.00	460.0
49.00	1690.0
50.00	45704.0
51.00	179328.0
52.00	8908.0
53.00	502.0
55.00	1250.0
56.00	5297.0
57.00	12349.0
57.90	383.0
61.00	2403.0
62.00	2600.0
63.00	7118.0
64.00	1033.0
65.00	3722.0
66.00	375.0
67.10	380.0
68.00	3119.0
69.00	177216.0
70.00	905.0
73.00	1886.0
74.00	17952.0
75.00	28528.0
76.10	10658.0
77.00	210432.0
78.00	14104.0
79.00	12888.0
80.00	9371.0
81.00	14470.0
82.00	3421.0
83.00	3510.0
83.90	675.0
85.00	3187.0
86.00	3747.0
87.00	2098.0
88.00	896.0
88.90	406.0
91.00	3130.0
92.00	3453.0
93.00	22304.0
94.00	1582.0
95.10	458.0
96.00	1149.0
97.00	471.0
98.00	17400.0
99.00	13780.0
100.00	1249.0
101.00	7963.0
102.00	455.0
103.00	2730.0
104.00	4856.0
105.00	4793.0
106.00	1878.0
107.00	60168.0
108.00	9238.0
109.10	1535.0
110.00	117128.0
111.00	16728.0
112.00	2150.0
113.00	658.0
115.00	330.0
116.00	3406.0
117.00	47656.0
118.00	3668.0
119.00	536.0
120.00	687.0
120.80	367.0
122.00	3933.0
123.00	5733.0
124.00	2851.0
125.00	2643.0
127.00	212544.0
128.00	15936.0
129.00	79808.0
130.00	6551.0
131.00	1408.0
132.10	696.0
132.80	471.0
134.00	1962.0
135.00	6888.0
136.00	2890.0
137.00	3717.0
137.90	858.0
139.00	523.0

Instrument :
BNA_N
ClientSampleId :

140.00	1368.0
141.00	9964.0
142.00	3430.0
143.00	2577.0
143.90	589.0
144.90	729.0
146.10	1965.0
147.00	4983.0
148.00	12455.0
149.00	3311.0
150.10	707.0
151.00	1228.0
151.70	973.0
153.00	3322.0
154.00	2404.0
155.00	6019.0
156.00	9712.0
157.00	1805.0
157.90	2303.0
159.00	1345.0
160.00	3431.0
161.00	4617.0
162.00	1398.0
163.00	489.0
163.90	575.0
165.00	3850.0
166.00	2983.0
167.00	21632.0
168.00	13643.0
169.00	2041.0
169.90	597.0
170.10	599.0
170.90	925.0
172.00	1811.0
173.00	2224.0
174.00	5308.0
175.00	9375.0
176.00	2596.0
177.00	4080.0
177.90	1484.0
179.00	15141.0
180.00	11906.0
181.00	5237.0
182.00	854.0
182.80	421.0
183.10	458.0
184.00	1439.0
185.00	7260.0
186.00	61176.0
187.00	17760.0
188.00	1887.0
189.00	3848.0
190.00	700.0
191.00	1848.0
192.00	5111.0
193.00	6075.0
194.00	1453.0
195.00	830.0
196.00	12602.0
198.00	468864.0
199.00	32864.0
200.00	2588.0
201.60	1867.0
203.00	3099.0
204.00	15538.0
205.00	27688.0
206.00	118712.0
207.00	17112.0
208.00	4387.0
209.00	1388.0
210.10	1948.0
211.00	4196.0
211.70	1332.0
213.10	415.0
215.00	1213.0
216.00	2818.0
217.00	31224.0
218.00	3687.0
218.90	440.0
221.00	19288.0
223.00	6945.0
224.00	61256.0
225.00	16233.0
226.00	1721.0
227.00	24656.0
228.00	3629.0
229.00	5217.0
230.00	659.0
231.00	2363.0
232.00	358.0
233.00	386.0
233.90	1543.0
235.00	2000.0
236.00	1138.0
237.00	2401.0

Instrument :
BNA_N
ClientSampleId :

238.00	425.0
238.90	1002.0
240.00	899.0
240.90	1513.0
242.00	3421.0
243.00	3260.0
244.00	51048.0
245.00	6943.0
246.00	9547.0
246.90	2153.0
247.90	578.0
248.90	1790.0
249.90	336.0
251.00	350.0
252.00	421.0
253.10	923.0
255.00	251584.0
256.00	38632.0
257.00	3319.0
258.00	13600.0
259.00	2319.0
260.00	388.0
260.90	395.0
264.00	351.0
265.00	5159.0
265.90	596.0
266.10	603.0
270.00	311.0
271.10	407.0
272.10	572.0
273.00	7631.0
274.00	20640.0
275.00	116072.0
276.00	15559.0
277.00	9343.0
278.00	2131.0
278.80	325.0
282.00	364.0
283.00	1086.0
284.10	868.0
285.00	1714.0
288.90	421.0
291.90	450.0
293.10	1926.0
294.00	517.0
295.00	835.0
296.00	30424.0
297.00	4461.0
298.00	312.0
301.00	452.0
301.90	494.0
303.00	3479.0
304.00	1090.0
308.00	416.0
308.80	383.0
309.90	577.0
313.00	342.0
314.00	1347.0
315.00	2790.0
316.00	1988.0
321.00	940.0
322.10	409.0
323.00	10133.0
324.10	2085.0
327.00	1815.0
328.10	1011.0
332.00	672.0
333.00	1072.0
334.00	6550.0
335.10	1490.0
341.00	1068.0
342.00	425.0
346.00	2256.0
347.00	521.0
352.00	3520.0
353.00	2286.0
354.00	3574.0
354.90	771.0
365.00	13387.0
366.00	2082.0
371.00	655.0
372.00	5819.0
373.00	1494.0
383.00	1191.0
383.90	586.0
385.00	320.0
389.90	802.0
391.00	546.0
402.00	2533.0
403.00	3464.0
404.00	1430.0
421.00	3155.0
422.00	2656.0
423.00	20016.0
424.10	5363.0

Instrument :
BNA_N
ClientSampleId :

425.00	806.0
441.00	54328.0
442.00	359168.0
443.00	70800.0
444.10	6663.0

Instrument :
BNA_N
ClientSampleId :

m/z	Abundance
37.00	724.0
38.00	1597.0
39.00	10938.0
40.00	3290.0
41.00	964.0
43.00	482.0
44.00	3983.0
44.90	325.0
49.10	1510.0
50.00	36632.0
51.00	143680.0
52.00	7187.0
53.00	318.0
55.00	1127.0
56.00	3954.0
57.00	10051.0
57.90	505.0
61.00	1838.0
62.00	2015.0
63.00	6524.0
64.00	904.0
65.00	2961.0
67.00	392.0
68.00	2566.0
69.00	147520.0
70.00	1183.0
73.00	1746.0
74.00	14762.0
75.00	23768.0
76.00	8681.0
77.00	176704.0
78.00	13159.0
79.00	10716.0
80.00	8438.0
81.00	12494.0
82.00	3071.0
83.00	3098.0
83.90	425.0
85.00	3021.0
86.00	3797.0
87.00	1608.0
87.90	707.0
91.00	2731.0
92.00	3079.0
93.00	19744.0
94.00	1497.0
95.00	489.0
96.00	1273.0
97.10	527.0
98.00	15283.0
99.00	11956.0
100.00	1047.0
101.00	6251.0
101.90	363.0
102.90	2301.0
104.00	4113.0
105.00	4258.0
106.00	1406.0
107.00	54656.0
108.00	8287.0
109.00	1600.0
110.00	103688.0
111.00	14501.0
111.90	1756.0
112.90	536.0
114.90	496.0
116.00	3190.0
117.00	44360.0
118.00	3099.0
119.10	511.0
120.00	661.0
122.00	3704.0
123.00	5311.0
123.90	2634.0
125.00	2536.0
127.00	186560.0
128.00	13696.0
129.00	71768.0
130.00	5640.0
131.00	980.0
132.00	691.0
133.10	391.0
134.00	2176.0
135.00	5930.0
136.00	2185.0
137.00	3213.0
138.10	645.0
138.90	420.0
140.00	923.0
141.00	9135.0
142.00	3253.0

Instrument :
BNA_N
ClientSampleId :

143.00	1969.0
144.00	704.0
145.10	410.0
145.90	1697.0
147.00	4320.0
148.00	10546.0
148.90	2707.0
150.00	763.0
151.10	1311.0
151.80	1053.0
152.90	2744.0
153.90	2325.0
155.00	5559.0
156.00	8269.0
157.10	1600.0
157.90	1718.0
159.00	1505.0
160.00	2723.0
161.00	4162.0
162.00	1205.0
162.90	369.0
163.90	752.0
165.00	3361.0
166.00	2666.0
167.00	19736.0
168.00	11974.0
169.00	1634.0
170.00	738.0
171.00	889.0
172.00	1672.0
173.00	2422.0
174.00	4077.0
175.00	7745.0
176.00	2303.0
177.00	3635.0
178.00	1377.0
179.00	14439.0
180.00	11557.0
181.00	5040.0
182.00	780.0
183.00	411.0
184.00	1190.0
185.00	6876.0
186.00	59432.0
187.00	16179.0
188.00	1561.0
189.00	3469.0
190.00	553.0
191.00	1619.0
192.00	4777.0
193.00	5190.0
194.00	1180.0
195.00	855.0
196.00	12594.0
198.00	441984.0
199.00	29112.0
200.00	2329.0
201.50	1733.0
203.00	2524.0
204.00	14994.0
205.00	26784.0
206.00	114296.0
207.10	15014.0
208.00	3649.0
209.00	1385.0
210.10	1574.0
211.00	4568.0
212.10	605.0
213.10	362.0
214.90	1321.0
216.00	2525.0
217.00	27600.0
218.00	4009.0
218.90	352.0
221.00	19048.0
223.00	6272.0
224.00	61808.0
225.00	15631.0
226.00	1782.0
227.00	24528.0
228.00	3175.0
229.00	5352.0
230.00	654.0
231.10	2413.0
232.00	505.0
233.00	530.0
234.00	1799.0
235.00	1825.0
236.00	1015.0
237.00	2507.0
238.00	361.0
238.90	1147.0
239.90	664.0
240.90	1208.0
242.00	2848.0

Instrument :
BNA_N
ClientSampleId :

243.00	3589.0
244.00	50712.0
245.00	6512.0
246.00	8878.0
247.00	1885.0
248.00	381.0
249.00	1780.0
250.00	363.0
251.10	537.0
252.00	377.0
253.10	1184.0
255.00	257728.0
256.00	37800.0
257.00	3007.0
258.00	13531.0
259.00	2046.0
260.00	516.0
261.00	542.0
265.00	5509.0
266.00	852.0
270.90	656.0
271.90	757.0
273.00	7418.0
274.00	21288.0
275.00	118384.0
276.00	15524.0
277.00	9155.0
278.00	1382.0
279.10	485.0
281.10	376.0
282.90	1024.0
283.90	620.0
285.00	1616.0
289.00	518.0
292.10	369.0
293.00	2270.0
294.00	671.0
295.00	879.0
296.00	30984.0
297.00	4159.0
300.90	301.0
302.00	555.0
303.00	3363.0
304.10	1216.0
308.00	388.0
308.80	408.0
310.10	433.0
314.00	1476.0
315.00	3551.0
316.00	1901.0
317.00	367.0
321.00	1129.0
322.10	570.0
323.00	10339.0
324.00	1941.0
327.00	1966.0
328.00	1102.0
331.90	880.0
333.10	996.0
334.00	6861.0
335.00	1663.0
341.00	1289.0
342.00	350.0
346.00	2509.0
346.80	372.0
352.00	3433.0
353.00	2394.0
354.00	3968.0
355.00	748.0
365.00	14826.0
366.00	2405.0
371.00	967.0
372.00	5775.0
373.00	1657.0
383.00	1623.0
383.90	321.0
390.00	697.0
391.00	577.0
392.00	475.0
400.90	449.0
402.00	2731.0
403.00	4192.0
404.00	1441.0
421.00	3178.0
422.00	3462.0
423.00	24952.0
424.00	5548.0
425.00	818.0
441.00	67312.0
442.00	438144.0
443.00	85496.0
444.00	8327.0
445.00	457.0

Instrument :
BNA_N
ClientSampleId :