

Data Path : Z:\SVOASRV\HPCHEM1\BNA_N\DATA\BN061919\
 Data File : BN006437.D
 Acq On : 20 Jun 2019 20:33
 Operator : JU/SJ
 Sample : K3335-07
 Misc :
 ALS Vial : 43 Sample Multiplier: 1

Instrument :
 BNA_N
 ClientSampleId :
 A4234

Quant Time: Jun 21 04:56:06 2019
 Quant Method : Z:\SVOASRV\HPCHEM1\BNA_N\METHODS\SOM-EPA-BN061919MA.M
 Quant Title : SVOA CALIBRATION
 QLast Update : Fri Jun 21 04:51:38 2019
 Response via : Initial Calibration

Internal Standards	R.T.	QIon	Response	Conc	Units	Dev(Min)
1) 1,4-Dichlorobenzene-d4	7.62	152	227101	20.00	ng/ul	0.00
18) Naphthalene-d8	10.40	136	1079550	20.00	ng/ul	0.00
35) Acenaphthene-d10	14.28	164	652842	20.00	ng/ul	0.00
61) Phenanthrene-d10	17.03	188	1469076	20.00	ng/ul	0.00
77) Chrysene-d12	21.26	240	1395616	20.00	ng/ul	-0.02
85) Perylene-d12	23.49	264	1575132	20.00	ng/ul	-0.03

System Monitoring Compounds

3) 1,4-Dioxane-d8	3.13	96	25148	4.33	ng/uL	0.00
5) Phenol-d5	6.80	99	463165	19.16	ng/ul	0.00
7) Bis-(2-Chloroethyl)ether-d	6.96	67	341533	22.82	ng/ul	0.00
9) 2-Chlorophenol-d4	7.16	132	373463	20.95	ng/ul	0.00
13) 4-Methylphenol-d8	8.33	113	324624	16.92	ng/ul	0.00
19) Nitrobenzene-d5	8.78	128	198252	22.93	ng/ul	0.00
22) 2-Nitrophenol-d4	9.50	143	215236	22.85	ng/ul	0.00
26) 2,4-Dichlorophenol-d3	10.03	165	355627	19.66	ng/ul	0.00
29) 4-Chloroaniline-d4	10.55	131	434264	20.87	ng/ul	0.00
43) Dimethylphthalate-d6	13.69	166	1344077	23.49	ng/ul	0.00
46) Acenaphthylene-d8	13.97	160	1602830	22.85	ng/ul	0.00
51) 4-Nitrophenol-d4	14.51	143	95380	9.76	ng/ul	0.00
57) Fluorene-d10	15.28	176	1190697	24.47	ng/ul	0.00
62) 4,6-Dinitro-2-methylphenol	15.42	200	130054	13.99	ng/ul	0.00
70) Anthracene-d10	17.13	188	1659470	22.44	ng/ul	0.00
78) Pyrene-d10	19.45	212	2096379	25.72	ng/ul	0.00
89) Benzo(a)pyrene-d12	23.35	264	2249198	25.28	ng/ul	-0.03

Target Compounds

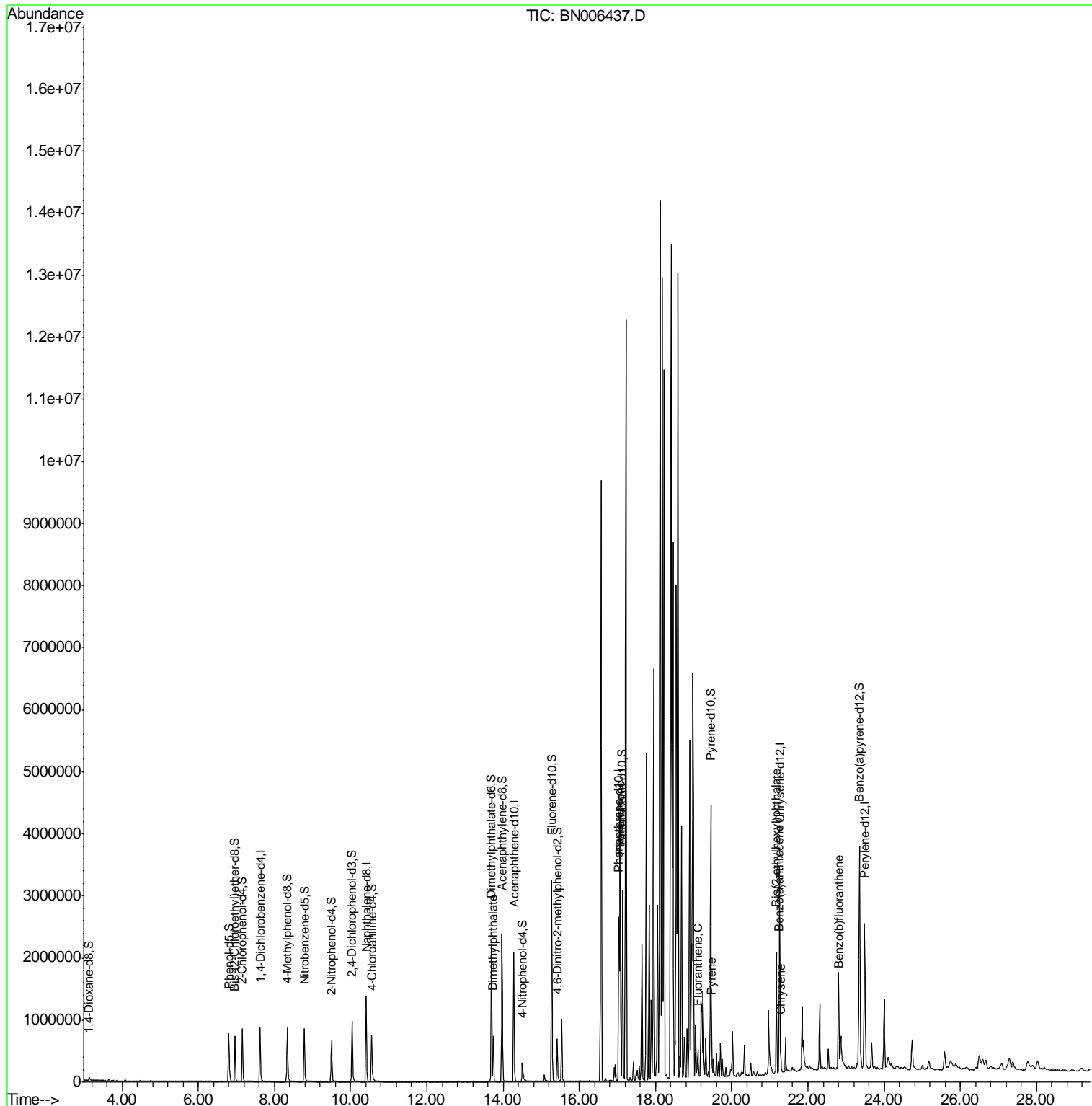
					Qvalue
44) Dimethylphthalate	13.74	163	429336	8.139	ng/ul 100
69) Phenanthrene	17.08	178	94847	1.171	ng/ul 98
76) Fluoranthene	19.11	202	201097	2.303	ng/ul 100
79) Pyrene	19.47	202	191211	2.012	ng/ul 100
82) Benzo(a)anthracene	21.24	228	102736	1.077	ng/ul 96
83) Bis(2-ethylhexyl)phthalate	21.17	149	626221	10.250	ng/ul 99
84) Chrysene	21.29	228	91398	1.007	ng/ul 97
87) Benzo(b)fluoranthene	22.82	252	125692	1.330	ng/ul# 94

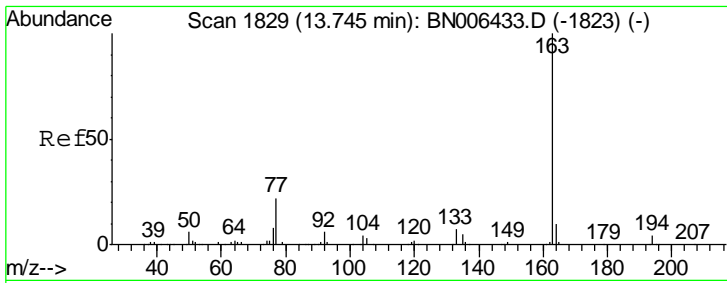
(#) = qualifier out of range (m) = manual integration (+) = signals summed

Data Path : Z:\SVOASRV\HPCHEM1\BNA_N\DATA\BN061919\
 Data File : BN006437.D
 Acq On : 20 Jun 2019 20:33
 Operator : JU/SJ
 Sample : K3335-07
 Misc :
 ALS Vial : 43 Sample Multiplier: 1

Instrument :
 BNA_N
 ClientSampled :
 A4234

Quant Time: Jun 21 04:56:06 2019
 Quant Method : Z:\SVOASRV\HPCHEM1\BNA_N\METHODS\SOM-EPA-BN061919MA.M
 Quant Title : SVOA CALIBRATION
 QLast Update : Fri Jun 21 04:51:38 2019
 Response via : Initial Calibration

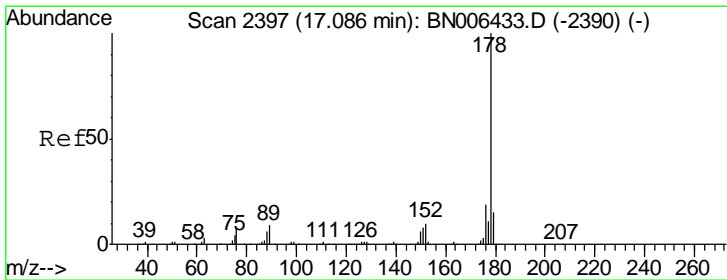
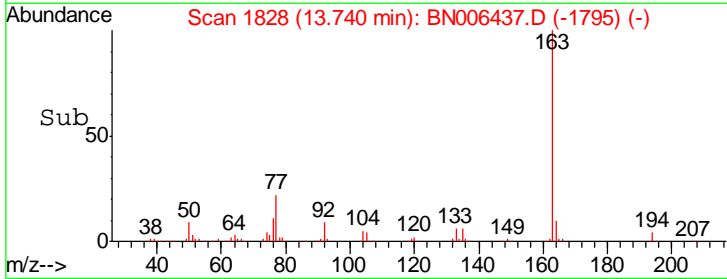
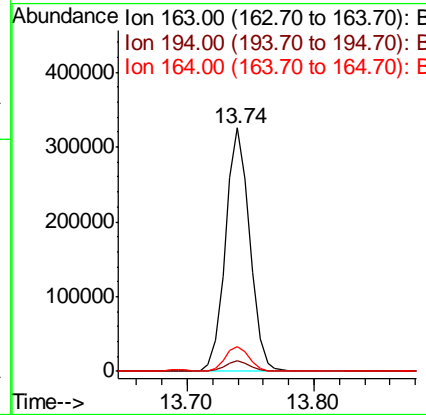
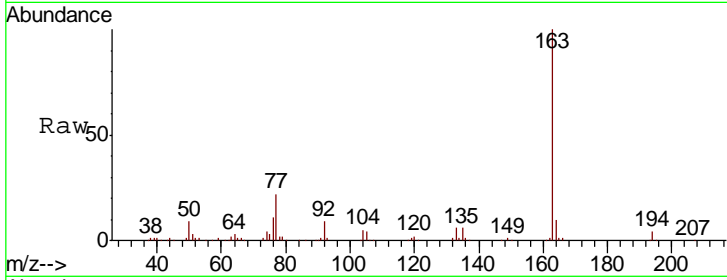




#44
 Dimethylphthalate
 Concen: 8.139 ng/ul
 RT: 13.74 min Scan# 1828
 Delta R.T. -0.01 min
 Lab File: BN006437.D
 Acq: 20 Jun 2019 20:33

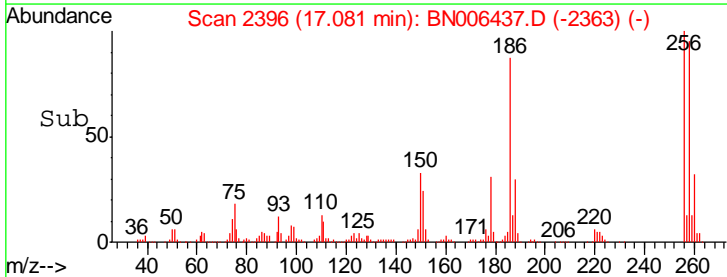
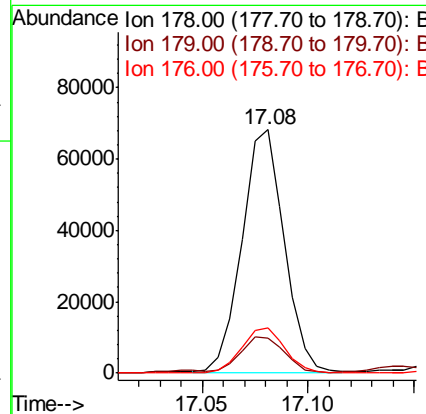
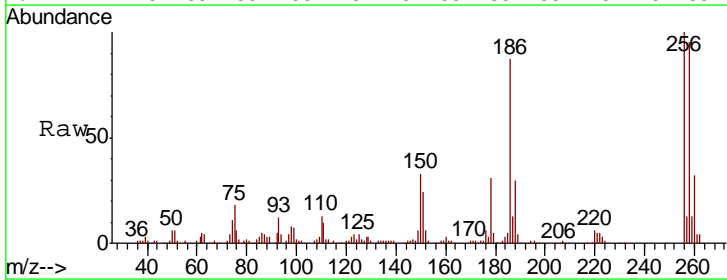
Instrument :
 BNA_N
 ClientSampled :
 A4234

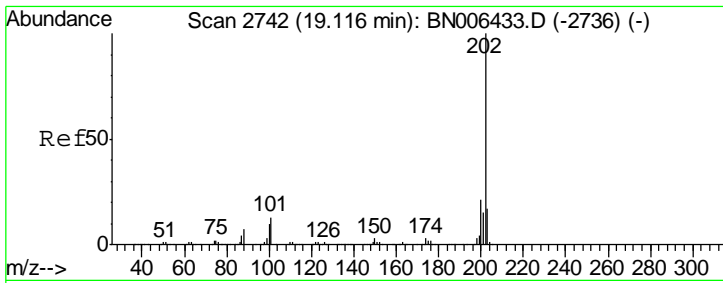
Tgt Ion	Resp	Lower	Upper
163	100		
194	4.2	3.4	5.0
164	10.2	8.0	12.0



#69
 Phenanthrene
 Concen: 1.171 ng/ul
 RT: 17.08 min Scan# 2396
 Delta R.T. -0.01 min
 Lab File: BN006437.D
 Acq: 20 Jun 2019 20:33

Tgt Ion	Resp	Lower	Upper
178	100		
179	14.6	12.5	18.7
176	18.4	15.3	22.9

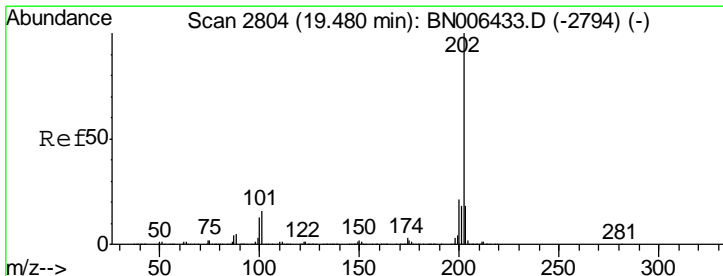
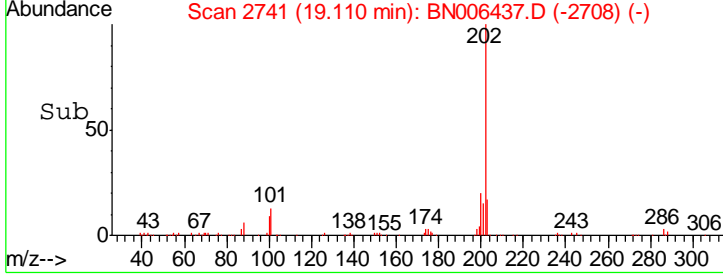
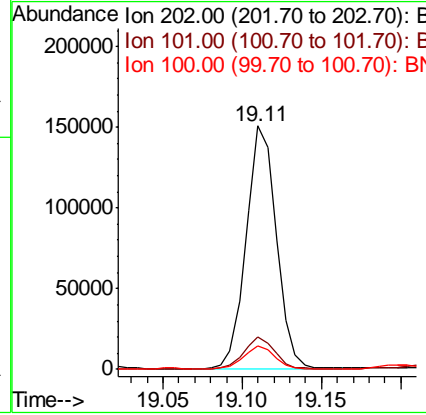
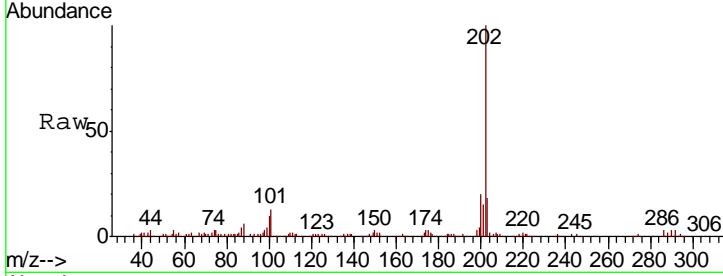




#76
 Fluoranthene
 Concen: 2.303 ng/ul
 RT: 19.11 min Scan# 2741
 Delta R.T. -0.01 min
 Lab File: BN006437.D
 Acq: 20 Jun 2019 20:33

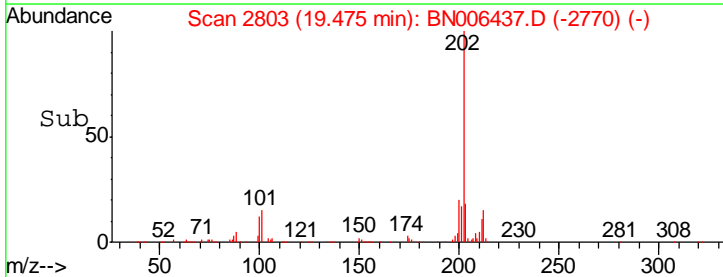
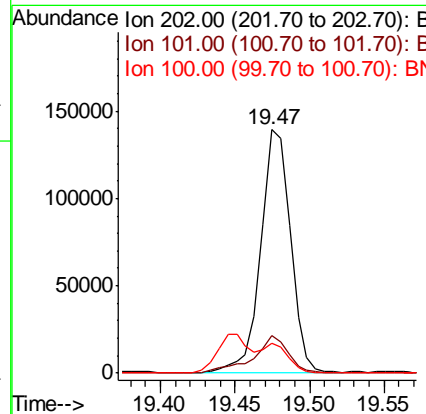
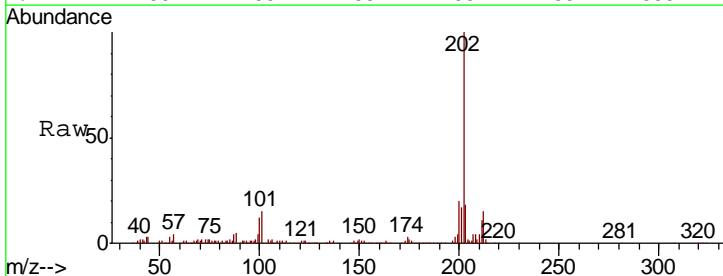
Instrument :
 BNA_N
 ClientSampled :
 A4234

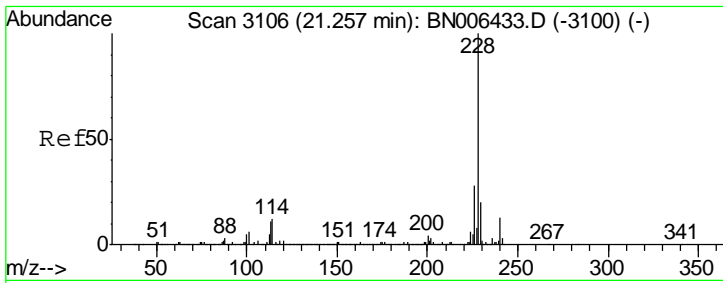
Tgt Ion	Resp	Lower	Upper
202	100		
101	13.2	10.5	15.7
100	9.5	7.6	11.4



#79
 Pyrene
 Concen: 2.012 ng/ul
 RT: 19.47 min Scan# 2803
 Delta R.T. -0.01 min
 Lab File: BN006437.D
 Acq: 20 Jun 2019 20:33

Tgt Ion	Resp	Lower	Upper
202	100		
101	15.3	12.2	18.4
100	12.1	9.8	14.6

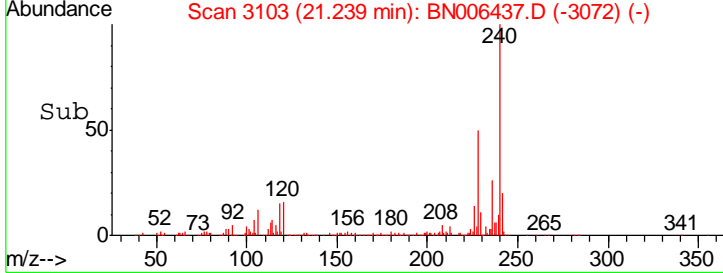
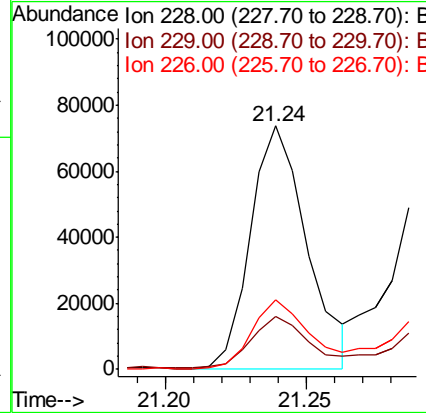
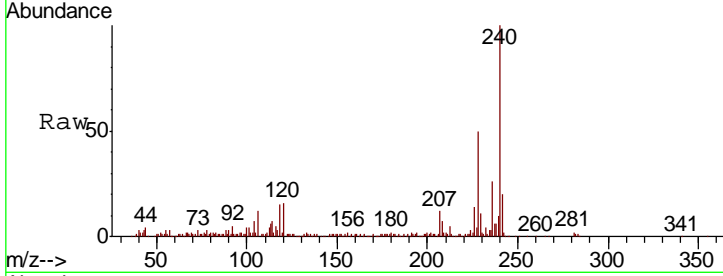




#82
 Benzo(a)anthracene
 Concen: 1.077 ng/ul
 RT: 21.24 min Scan# 3103
 Delta R.T. -0.02 min
 Lab File: BN006437.D
 Acq: 20 Jun 2019 20:33

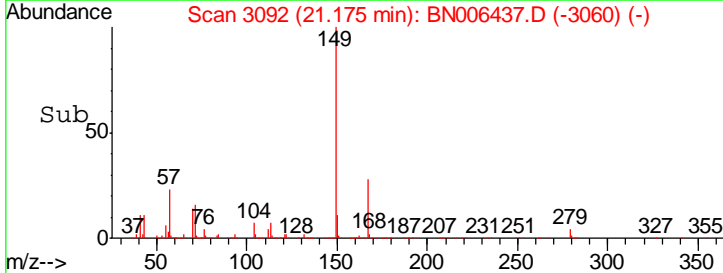
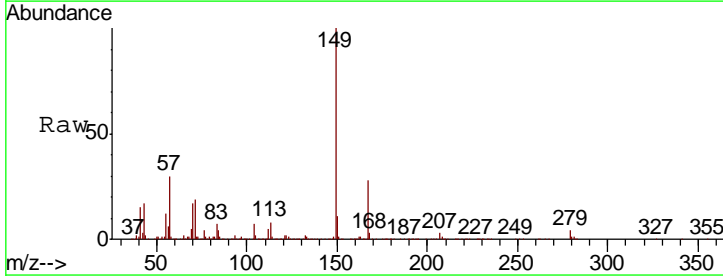
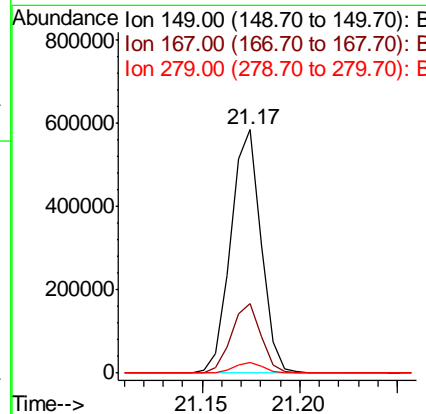
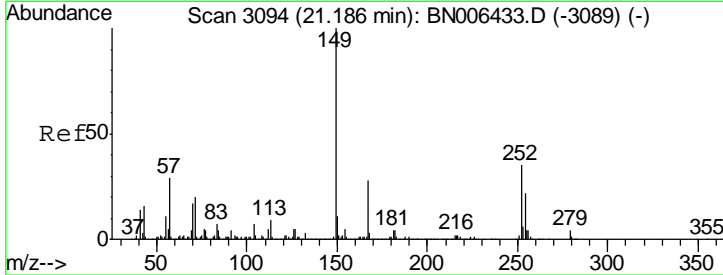
Instrument :
 BNA_N
 ClientSampled :
 A4234

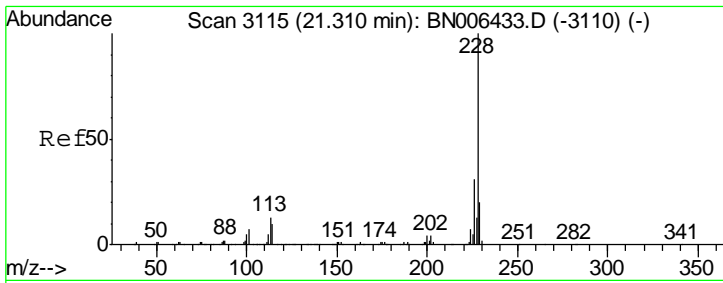
Tgt Ion	Resp	Lower	Upper
228	102736		
229	22.0	15.6	23.4
226	28.6	21.5	32.3



#83
 Bis(2-ethylhexyl)phthalate
 Concen: 10.250 ng/ul
 RT: 21.17 min Scan# 3092
 Delta R.T. -0.01 min
 Lab File: BN006437.D
 Acq: 20 Jun 2019 20:33

Tgt Ion	Resp	Lower	Upper
149	626221		
167	28.4	22.2	33.4
279	4.3	3.3	4.9

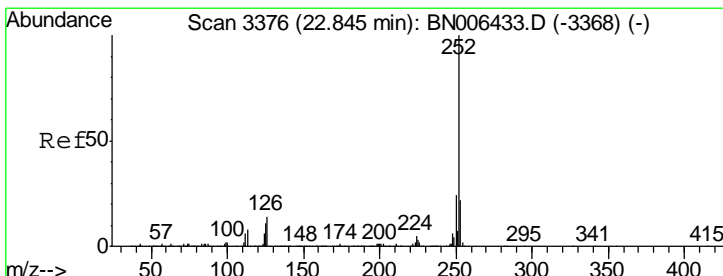
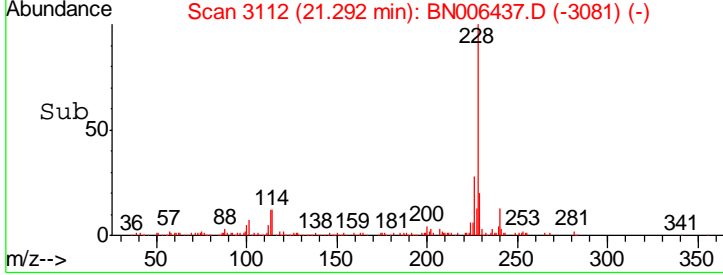
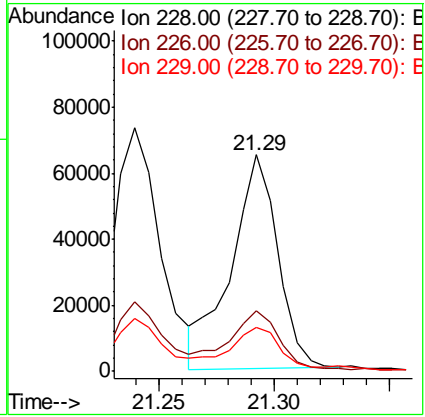
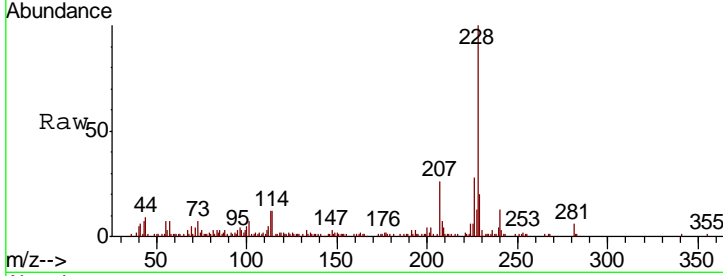




#84
 Chrysene
 Concen: 1.007 ng/ul
 RT: 21.29 min Scan# 3112
 Delta R.T. -0.02 min
 Lab File: BN006437.D
 Acq: 20 Jun 2019 20:33

Instrument :
 BNA_N
 ClientSampled :
 A4234

Tgt Ion	Resp	Lower	Upper
228	91398		
226	28.0	24.2	36.2
229	20.4	15.9	23.9



#87
 Benzo(b)fluoranthene
 Concen: 1.330 ng/ul
 RT: 22.82 min Scan# 3372
 Delta R.T. -0.02 min
 Lab File: BN006437.D
 Acq: 20 Jun 2019 20:33

Tgt Ion	Resp	Lower	Upper
252	125692		
253	23.0	17.7	26.5
125	16.6	9.0	13.6#

