

Data Path : Z:\SVOASRV\HPCHEM1\BNA_N\DATA\BN061919\
 Data File : BN006410.D
 Acq On : 19 Jun 2019 23:14
 Operator : JU/SJ
 Sample : K3335-05
 Misc :
 ALS Vial : 17 Sample Multiplier: 1

Instrument :
 BNA_N
 ClientSampled :
 A41Z7

Integration Parameters: LSCINT.P

Integrator: RTE
 Smoothing : OFF
 Sampling : 1
 Start Thrs: 0.2
 Stop Thrs : 0

Filtering: 5
 Min Area: 0.1 % of largest Peak
 Max Peaks: 100
 Peak Location: TOP

If leading or trailing edge < 100 prefer < Baseline drop else tangent >
 Peak separation: 5

Method : Z:\SVOASRV\HPCHEM1\BNA_N\METHODS\SOM-EPA-BN061919MA.M
 Title : SVOA CALIBRATION

Signal : TIC

peak #	R.T. min	first scan	max scan	last scan	PK TY	peak height	corr. area	corr. % max.	% of total
1	3.140	23	26	32	rVB	16723	23103	0.52%	0.059%
2	3.652	110	113	120	rVB3	10371	13838	0.31%	0.035%
3	3.770	129	133	138	rVB	20131	30664	0.68%	0.079%
4	3.864	146	149	155	rVB	7365	12011	0.27%	0.031%
5	4.081	183	186	192	rVB4	8611	11795	0.26%	0.030%
6	4.493	251	256	260	rBV5	3478	5834	0.13%	0.015%
7	4.752	296	300	309	rVB	16094	24914	0.56%	0.064%
8	5.640	447	451	458	rBV4	5616	12116	0.27%	0.031%
9	6.805	640	649	666	rBV2	231781	539333	12.04%	1.383%
10	6.964	671	676	690	rVV	209537	342685	7.65%	0.879%
11	7.164	703	710	721	rBV	230724	401397	8.96%	1.029%
12	7.622	781	788	798	rBV	777935	1338730	29.90%	3.433%
13	8.340	904	910	923	rBV	227708	419970	9.38%	1.077%
14	8.452	923	929	941	rVB	83854	155947	3.48%	0.400%
15	8.581	948	951	956	rBV4	4218	7857	0.18%	0.020%
16	8.781	979	985	1000	rBV	213939	399148	8.91%	1.023%
17	8.899	1002	1005	1010	rVV2	5199	10510	0.23%	0.027%
18	8.952	1012	1014	1023	rVB7	3221	5168	0.12%	0.013%
19	9.193	1051	1055	1059	rBV2	6730	9641	0.22%	0.025%
20	9.505	1100	1108	1126	rBV	155543	301290	6.73%	0.773%
21	9.869	1164	1170	1179	rVB2	12508	24620	0.55%	0.063%
22	10.040	1193	1199	1225	rVB	232816	456704	10.20%	1.171%
23	10.405	1254	1261	1278	rBV	1212756	2097729	46.85%	5.379%
24	10.557	1281	1287	1299	rBV	123683	265658	5.93%	0.681%
25	11.228	1394	1401	1413	rBV5	4728	19721	0.44%	0.051%
26	12.016	1531	1535	1542	rBV3	3752	7948	0.18%	0.020%
27	13.693	1814	1820	1824	rBV	724120	975957	21.79%	2.502%
28	13.740	1824	1828	1835	rVB	259096	359898	8.04%	0.923%
29	13.969	1861	1867	1879	rBV	628924	954552	21.32%	2.448%
30	14.281	1913	1920	1934	rBV2	1968229	2960040	66.10%	7.590%
31	14.516	1954	1960	1974	rBV2	83635	216290	4.83%	0.555%
32	14.722	1991	1995	2005	rBV5	16697	36950	0.83%	0.095%
33	15.087	2052	2057	2064	rBV	49604	65764	1.47%	0.169%
34	15.140	2064	2066	2071	rVB3	4327	4979	0.11%	0.013%

Data Path : Z:\SVOASRV\HPCHEM1\BNA_N\DATA\BN061919\
 Data File : BN006410.D
 Acq On : 19 Jun 2019 23:14
 Operator : JU/SJ
 Sample : K3335-05
 Misc :
 ALS Vial : 17 Sample Multiplier: 1

Instrument :
 BNA_N
 ClientSampleId :
 A41Z7

Integration Parameters: LSCINT.P

Integrator: RTE
 Smoothing : OFF Filtering: 5
 Sampling : 1 Min Area: 0.1 % of largest Peak
 Start Thrs: 0.2 Max Peaks: 100
 Stop Thrs : 0 Peak Location: TOP

If leading or trailing edge < 100 prefer < Baseline drop else tangent >
 Peak separation: 5

Method : Z:\SVOASRV\HPCHEM1\BNA_N\METHODS\SOM-EPA-BN061919MA.M
 Title : SVOA CALIBRATION

35	15.281	2084	2090	2100	rBV	950953	1372531	30.65%	3.519%
36	15.422	2108	2114	2128	rBV	169799	280891	6.27%	0.720%
37	15.522	2128	2131	2136	rVB4	9998	14521	0.32%	0.037%
38	16.010	2210	2214	2218	rBV3	4562	7592	0.17%	0.019%
39	16.234	2249	2252	2259	rVB5	3300	5383	0.12%	0.014%
40	16.581	2309	2311	2318	rVB5	5202	7623	0.17%	0.020%
41	16.798	2342	2348	2351	rBV4	3835	7284	0.16%	0.019%
42	16.828	2351	2353	2361	rVB	7647	11547	0.26%	0.030%
43	16.963	2371	2376	2382	rBV6	3712	6881	0.15%	0.018%
44	17.034	2382	2388	2399	rBV2	2530347	3623960	80.93%	9.292%
45	17.134	2399	2405	2423	rVB2	974762	1458748	32.58%	3.740%
46	17.457	2455	2460	2467	rBV4	6555	10360	0.23%	0.027%
47	17.539	2471	2474	2478	rVB3	5430	6000	0.13%	0.015%
48	17.810	2515	2520	2530	rBV5	5037	12148	0.27%	0.031%
49	17.939	2537	2542	2549	rBV	64118	104647	2.34%	0.268%
50	18.010	2549	2554	2561	rVB	63327	98274	2.19%	0.252%
51	18.181	2579	2583	2585	rBV4	4085	4522	0.10%	0.012%
52	18.234	2588	2592	2596	rBV3	6134	6781	0.15%	0.017%
53	18.516	2635	2640	2645	rVB2	12339	17061	0.38%	0.044%
54	18.745	2674	2679	2684	rBV	35233	47695	1.07%	0.122%
55	18.792	2684	2687	2691	rVB5	6410	8351	0.19%	0.021%
56	18.875	2698	2701	2705	rVB2	13303	13286	0.30%	0.034%
57	18.998	2719	2722	2723	rBV3	7867	8429	0.19%	0.022%
58	19.075	2733	2735	2738	rBV2	6656	8902	0.20%	0.023%
59	19.104	2738	2740	2746	rVB	20329	25858	0.58%	0.066%
60	19.233	2758	2762	2769	rBV3	35522	58541	1.31%	0.150%
61	19.333	2775	2779	2785	rBB	7657	11594	0.26%	0.030%
62	19.439	2792	2797	2811	rVV	1289089	1817655	40.59%	4.661%
63	19.622	2825	2828	2832	rVB2	11410	13511	0.30%	0.035%
64	19.998	2887	2892	2897	rBV2	65594	86704	1.94%	0.222%
65	20.363	2950	2954	2960	rBV7	17497	29769	0.66%	0.076%
66	20.498	2973	2977	2980	rBV	65341	72203	1.61%	0.185%
67	20.963	3052	3056	3065	rBV	171409	299265	6.68%	0.767%
68	21.163	3086	3090	3095	rVB	123586	134430	3.00%	0.345%
69	21.245	3099	3104	3118	rBV	3152306	4242383	94.74%	10.878%
70	21.398	3127	3130	3135	rBV	185326	201103	4.49%	0.516%
71	21.833	3199	3204	3207	rBV	378781	470519	10.51%	1.206%

Data Path : Z:\SVOASRV\HPCHEM1\BNA_N\DATA\BN061919\
 Data File : BN006410.D
 Acq On : 19 Jun 2019 23:14
 Operator : JU/SJ
 Sample : K3335-05
 Misc :
 ALS Vial : 17 Sample Multiplier: 1

Instrument :
 BNA_N
 ClientSampleId :
 A41Z7

Integration Parameters: LSCINT.P
 Integrator: RTE
 Smoothing : OFF Filtering: 5
 Sampling : 1 Min Area: 0.1 % of largest Peak
 Start Thrs: 0.2 Max Peaks: 100
 Stop Thrs : 0 Peak Location: TOP

If leading or trailing edge < 100 prefer < Baseline drop else tangent >
 Peak separation: 5

Method : Z:\SVOASRV\HPCHEM1\BNA_N\METHODS\SOM-EPA-BN061919MA.M
 Title : SVOA CALIBRATION

72	22.286	3277	3281	3287	rBV	474091	616649	13.77%	1.581%
73	22.692	3348	3350	3355	rVB	45421	52707	1.18%	0.135%
74	22.792	3361	3367	3373	rBV	785982	1180173	26.35%	3.026%
75	23.333	3452	3459	3473	rBV2	1133007	2635097	58.85%	6.757%
76	23.474	3475	3483	3495	rBV	2424425	4478010	100.00%	11.482%
77	23.980	3563	3569	3578	rVB	606250	1131960	25.28%	2.902%
78	24.716	3687	3694	3710	rBV	368945	788760	17.61%	2.022%
79	25.568	3832	3839	3851	rVB	241506	612001	13.67%	1.569%
80	26.568	4004	4009	4020	rVB2	133704	384586	8.59%	0.986%

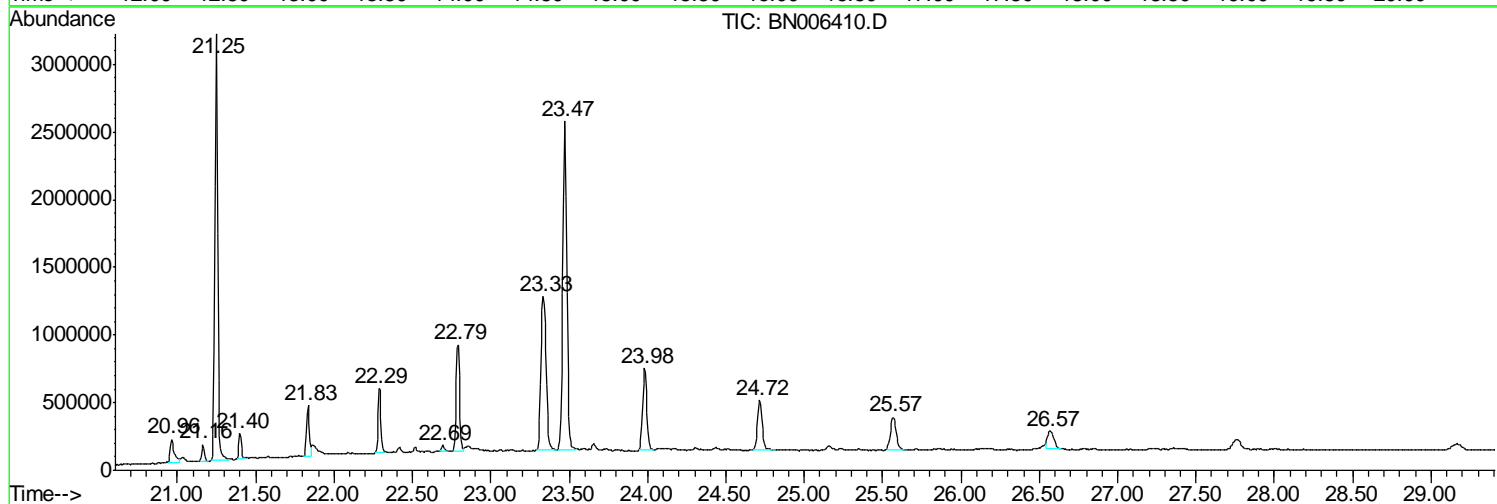
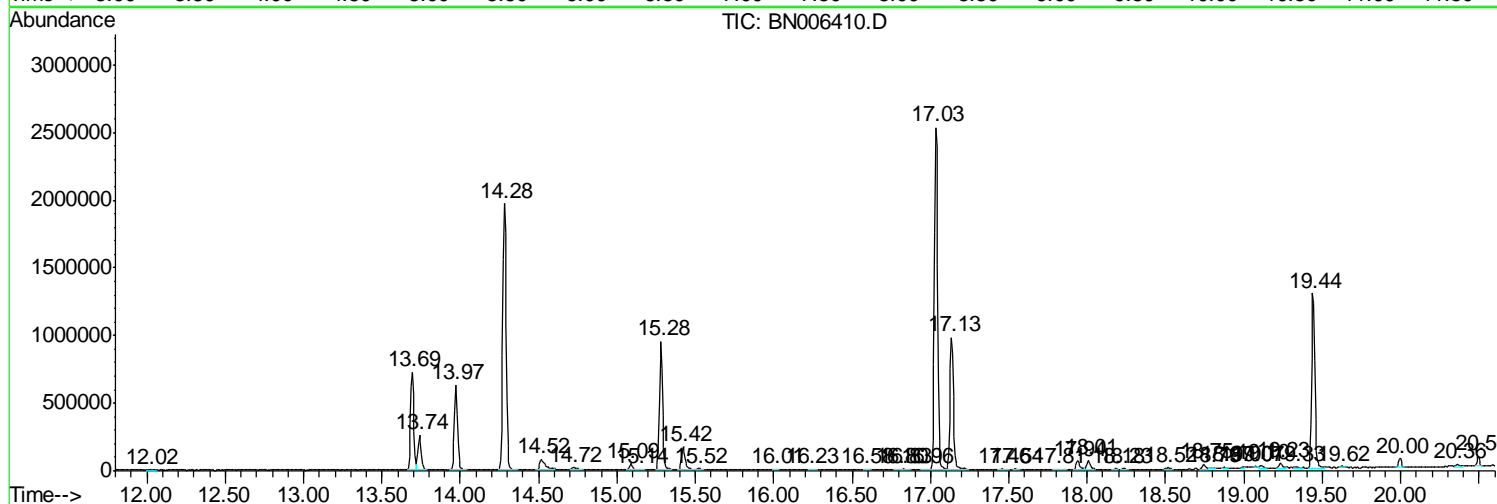
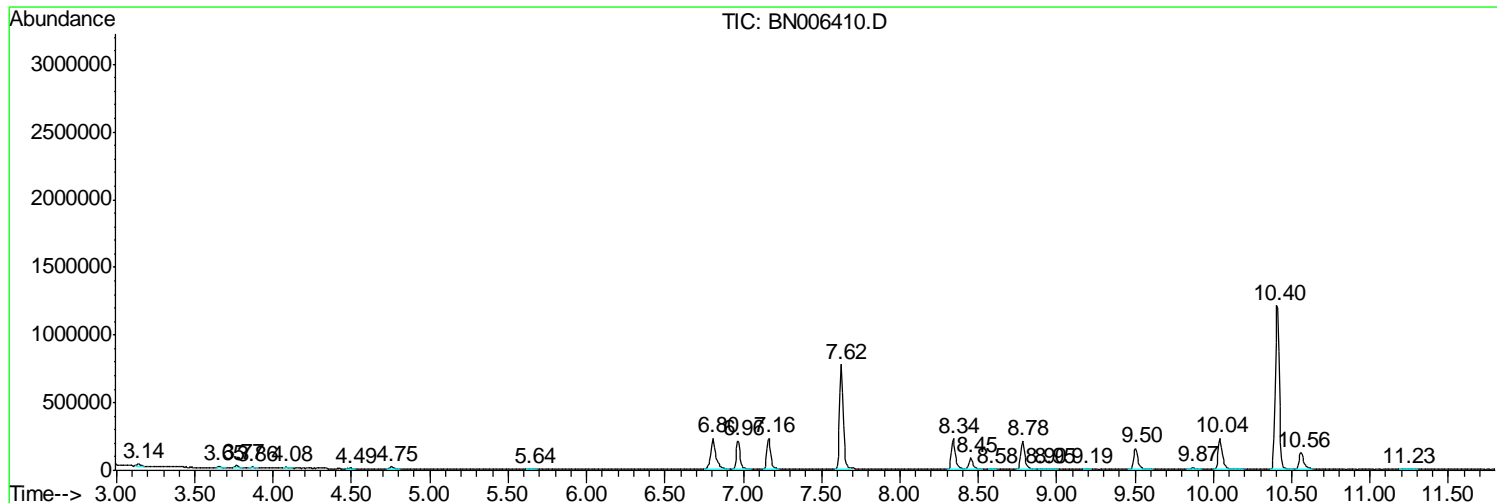
Sum of corrected areas: 38999656

Data Path : Z:\SVOASRV\HPCHEM1\BNA N\DATA\BN061919\
 Data File : BN006410.D
 Acq On : 19 Jun 2019 23:14
 Operator : JU/SJ
 Sample : K3335-05
 Misc :
 ALS Vial : 17 Sample Multiplier: 1

Instrument :
 BNA_N
 ClientSampleId :
 A41Z7

Quant Method : Z:\SVOASRV\HPCHEM1\BNA_N\METHODS\SOM-EPA-BN061919MA.M
 Quant Title : SVOA CALIBRATION

TIC Library : C:\DATABASE\NIST11.L
 TIC Integration Parameters: LSCINT.P



Data Path : Z:\SVOASRV\HPCHEM1\BNA N\DATA\BN061919\
 Data File : BN006410.D
 Acq On : 19 Jun 2019 23:14
 Operator : JU/SJ
 Sample : K3335-05
 Misc :
 ALS Vial : 17 Sample Multiplier: 1

Instrument :
 BNA_N
 ClientSampled :
 A41Z7

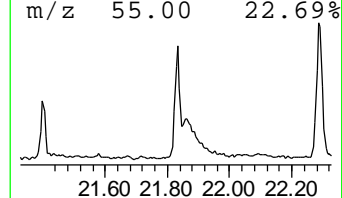
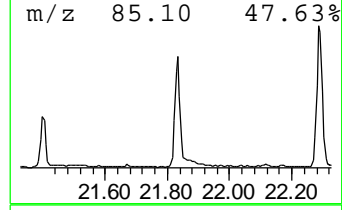
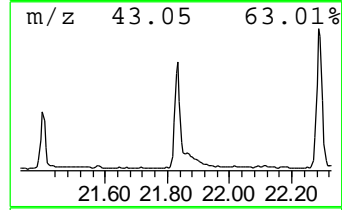
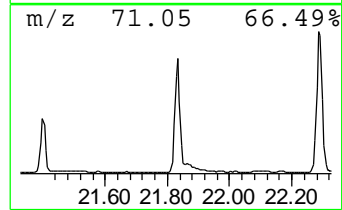
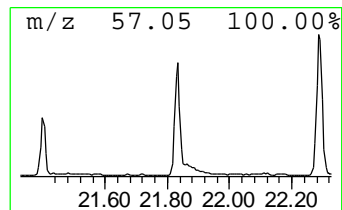
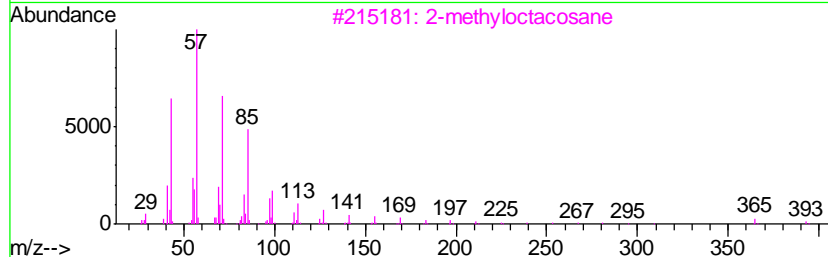
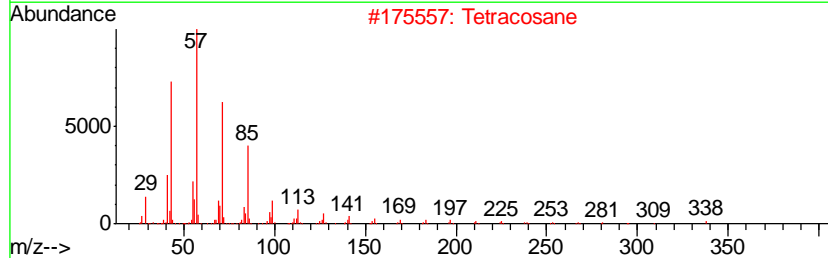
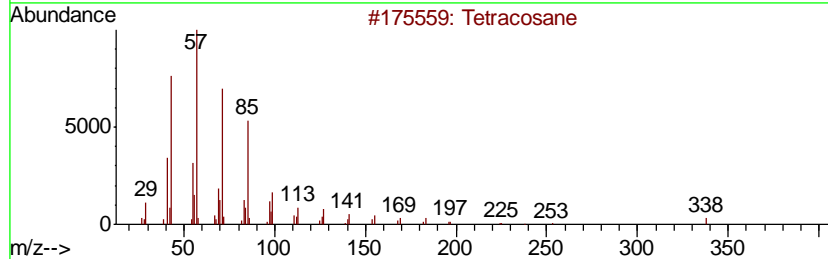
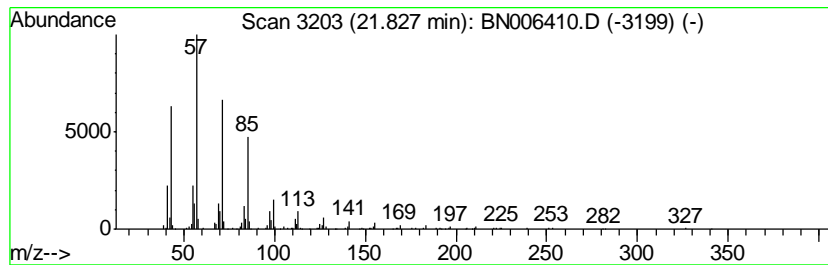
Quant Method : Z:\SVOASRV\HPCHEM1\BNA_N\METHODS\SOM-EPA-BN061919MA.M
 Quant Title : SVOA CALIBRATION

TIC Library : C:\DATABASE\NIST11.L
 TIC Integration Parameters: LSCINT.P

 Peak Number 1 (DEL) Alkane: Straight-Chai... Concentration Rank 6

R.T.	EstConc	Area	Relative to ISTD	R.T.
21.83	2.22 ng/ul	470519	Chrysene-d12	21.25

Hit#	of	Tentative ID	MW	MolForm	CAS#	Qual
1	5	Tetracosane	338	C24H50	000646-31-1	91
2		Tetracosane	338	C24H50	000646-31-1	91
3		2-methyloctacosane	408	C29H60	1000376-72-8	91
4		Heneicosane	296	C21H44	000629-94-7	91
5		Tetratetracontane	619	C44H90	007098-22-8	91



Data Path : Z:\SVOASRV\HPCHEM1\BNA N\DATA\BN061919\
 Data File : BN006410.D
 Acq On : 19 Jun 2019 23:14
 Operator : JU/SJ
 Sample : K3335-05
 Misc :
 ALS Vial : 17 Sample Multiplier: 1

Instrument :
 BNA_N
 ClientSampleID :
 A41Z7

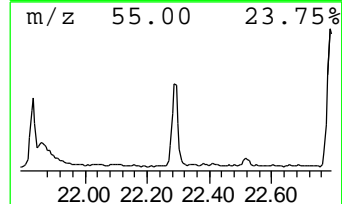
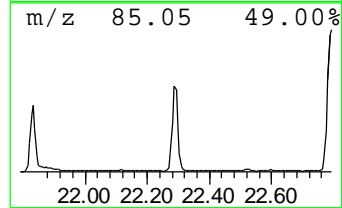
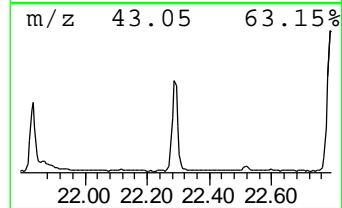
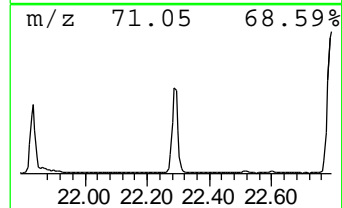
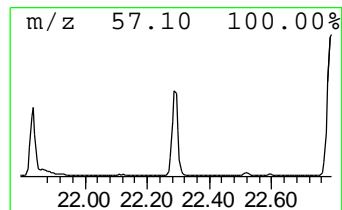
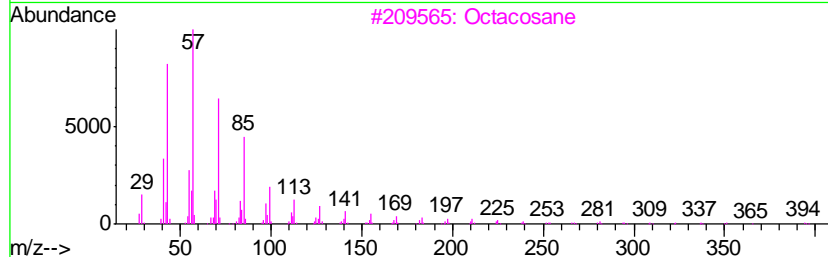
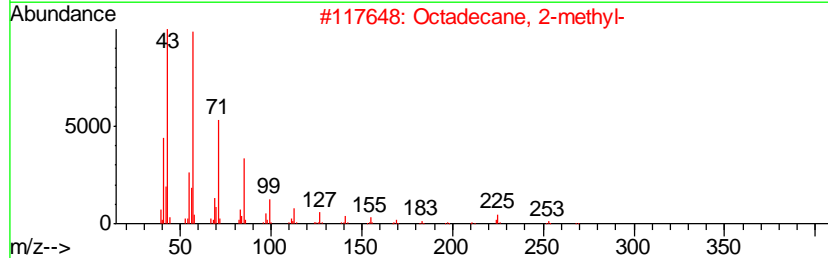
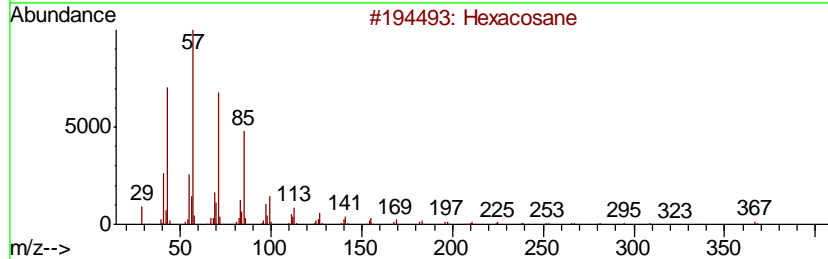
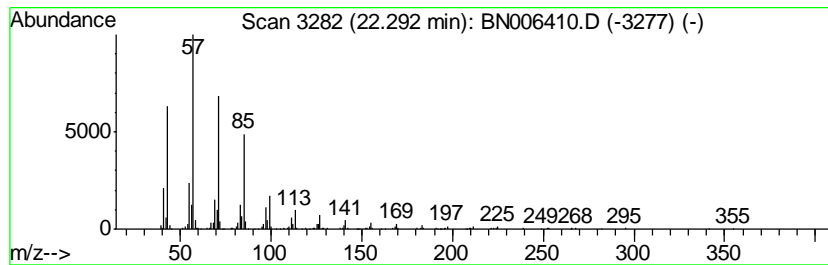
Quant Method : Z:\SVOASRV\HPCHEM1\BNA_N\METHODS\SOM-EPA-BN061919MA.M
 Quant Title : SVOA CALIBRATION

TIC Library : C:\DATABASE\NIST11.L
 TIC Integration Parameters: LSCINT.P

 Peak Number 2 (DEL) Alkane: Straight-Chai... Concentration Rank 4

R.T.	EstConc	Area	Relative to ISTD	R.T.
22.29	2.91 ng/ul	616649	Chrysene-d12	21.25

Hit#	of	Tentative ID	MW	MolForm	CAS#	Qual
1	5	Hexacosane	366	C26H54	000630-01-3	94
2		Octadecane, 2-methyl-	268	C19H40	001560-88-9	93
3		Octacosane	394	C28H58	000630-02-4	91
4		Tetracosane	338	C24H50	000646-31-1	91
5		Heneicosane	296	C21H44	000629-94-7	91



Data Path : Z:\SVOASRV\HPCHEM1\BNA N\DATA\BN061919\
 Data File : BN006410.D
 Acq On : 19 Jun 2019 23:14
 Operator : JU/SJ
 Sample : K3335-05
 Misc :
 ALS Vial : 17 Sample Multiplier: 1

Instrument :
 BNA_N
 ClientSampleId :
 A41Z7

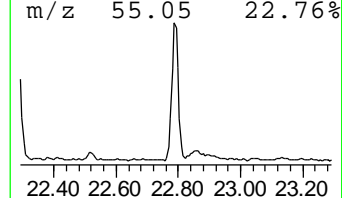
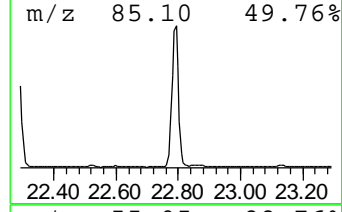
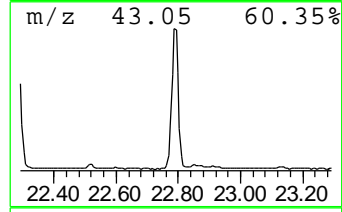
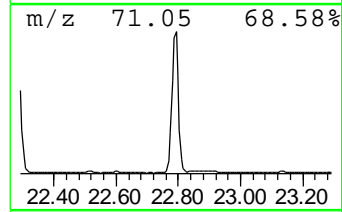
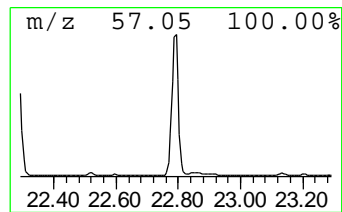
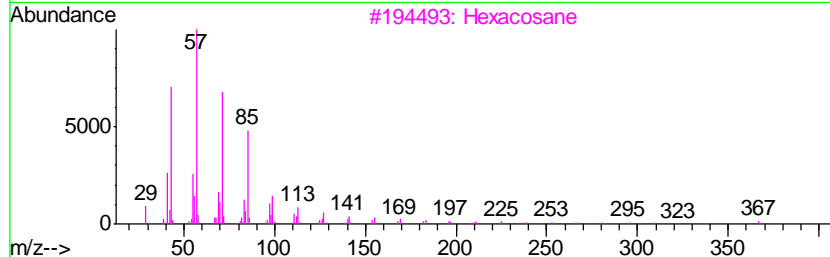
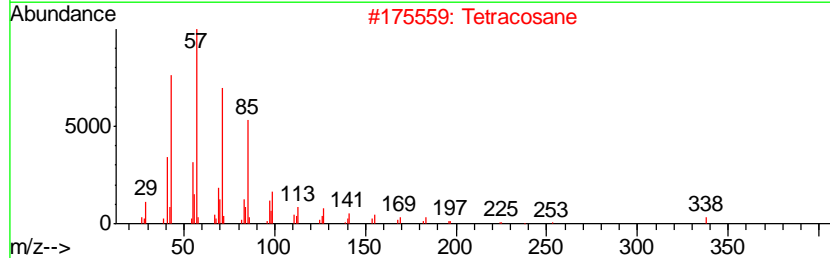
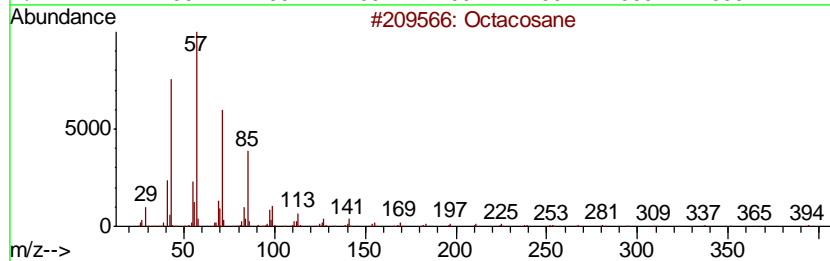
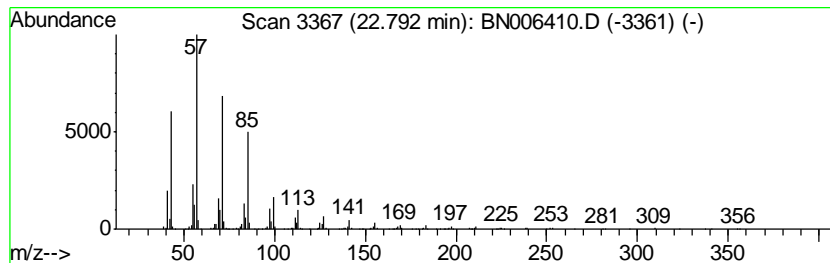
Quant Method : Z:\SVOASRV\HPCHEM1\BNA_N\METHODS\SOM-EPA-BN061919MA.M
 Quant Title : SVOA CALIBRATION

TIC Library : C:\DATABASE\NIST11.L
 TIC Integration Parameters: LSCINT.P

 Peak Number 3 (DEL) Alkane: Straight-Chai... Concentration Rank 1

R.T.	EstConc	Area	Relative to ISTD	R.T.
22.79	5.27 ng/ul	1180170	Perylene-d12	23.47

Hit#	of	Tentative ID	MW	MolForm	CAS#	Qual
1	5	Octacosane	394	C28H58	000630-02-4	91
2		Tetracosane	338	C24H50	000646-31-1	91
3		Hexacosane	366	C26H54	000630-01-3	91
4		Octacosane	394	C28H58	000630-02-4	91
5		Heneicosane	296	C21H44	000629-94-7	91



Data Path : Z:\SVOASRV\HPCHEM1\BNA N\DATA\BN061919\
 Data File : BN006410.D
 Acq On : 19 Jun 2019 23:14
 Operator : JU/SJ
 Sample : K3335-05
 Misc :
 ALS Vial : 17 Sample Multiplier: 1

Instrument :
 BNA_N
 ClientSampled :
 A41Z7

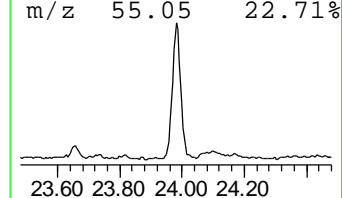
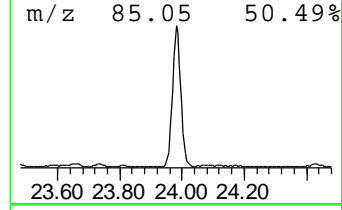
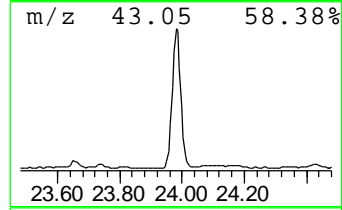
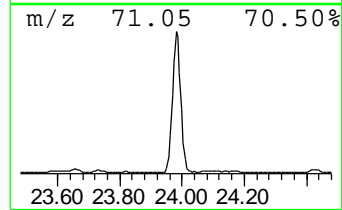
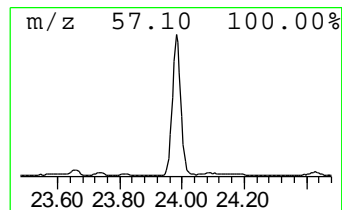
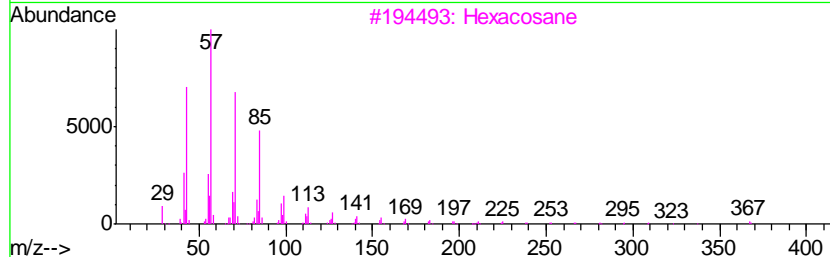
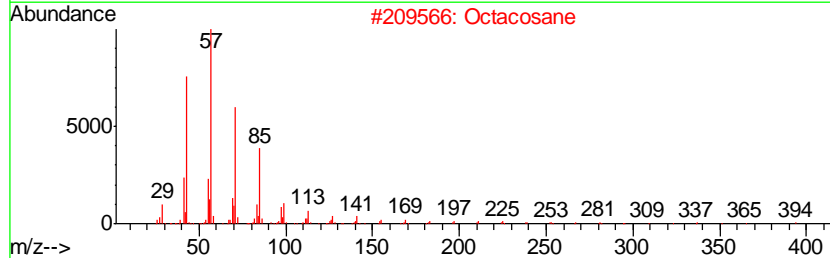
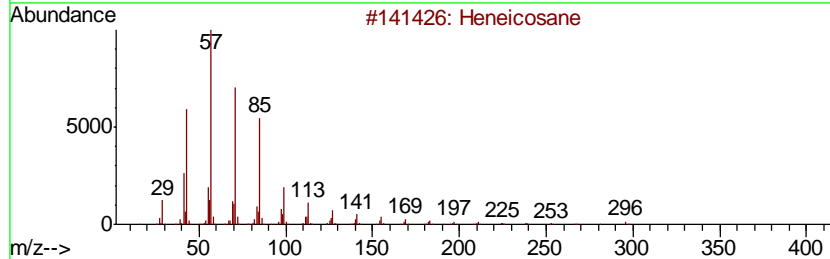
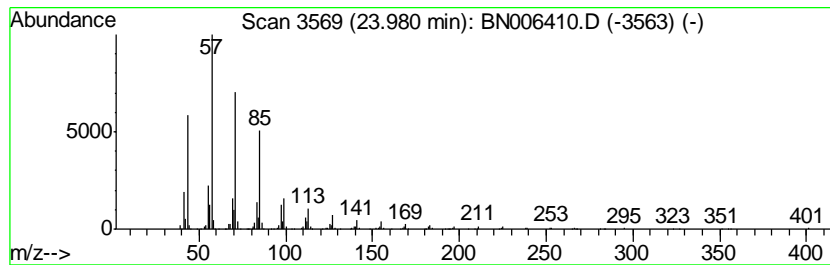
Quant Method : Z:\SVOASRV\HPCHEM1\BNA_N\METHODS\SOM-EPA-BN061919MA.M
 Quant Title : SVOA CALIBRATION

TIC Library : C:\DATABASE\NIST11.L
 TIC Integration Parameters: LSCINT.P

 Peak Number 4 (DEL) Alkane: Straight-Chai... Concentration Rank 2

R.T.	EstConc	Area	Relative to ISTD	R.T.
23.98	5.06 ng/ul	1131960	Perylene-d12	23.47

Hit#	of	Tentative ID	MW	MolForm	CAS#	Qual
1	5	Heneicosane	296	C21H44	000629-94-7	91
2		Octacosane	394	C28H58	000630-02-4	91
3		Hexacosane	366	C26H54	000630-01-3	91
4		Heneicosane, 11-(1-ethylpropyl)-	366	C26H54	055282-11-6	91
5		Docosane, 7-hexyl-	394	C28H58	055373-86-9	91



Data Path : Z:\SVOASRV\HPCHEM1\BNA N\DATA\BN061919\
 Data File : BN006410.D
 Acq On : 19 Jun 2019 23:14
 Operator : JU/SJ
 Sample : K3335-05
 Misc :
 ALS Vial : 17 Sample Multiplier: 1

Instrument :
 BNA_N
 ClientSampleId :
 A41Z7

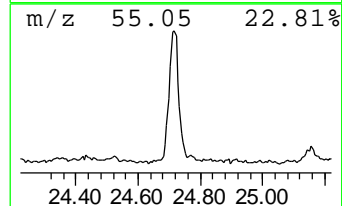
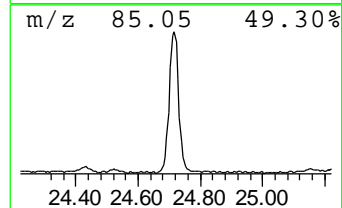
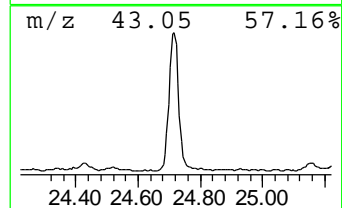
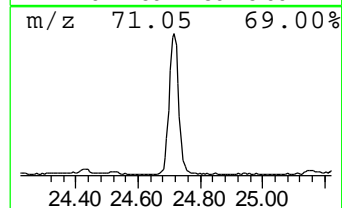
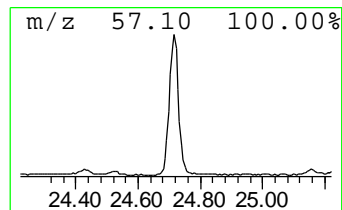
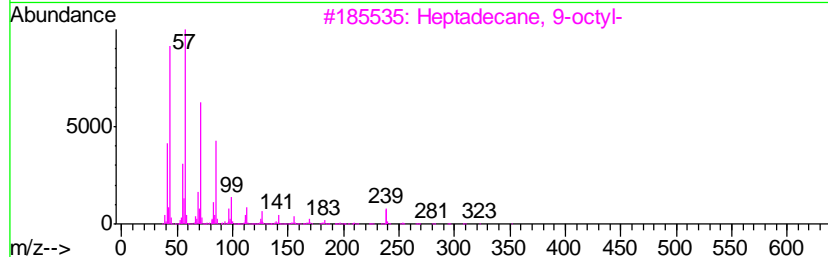
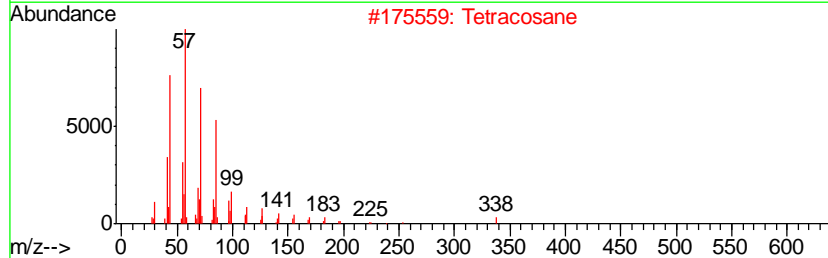
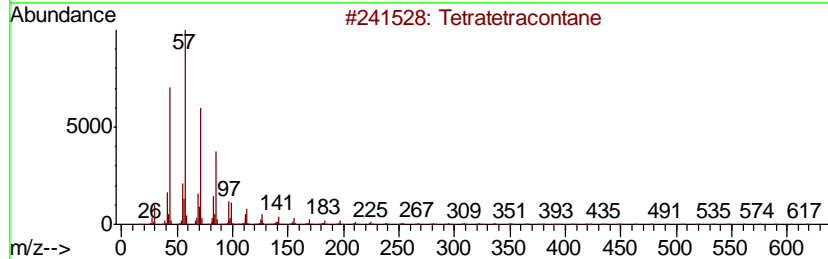
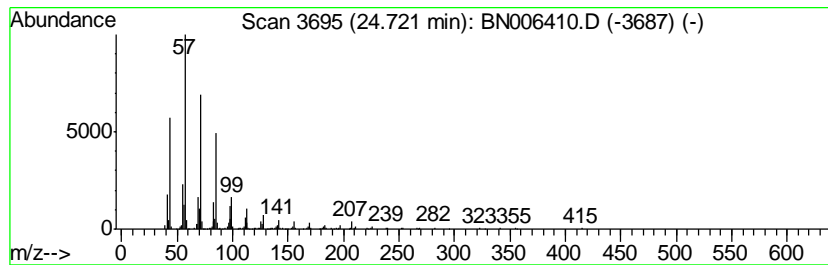
Quant Method : Z:\SVOASRV\HPCHEM1\BNA_N\METHODS\SOM-EPA-BN061919MA.M
 Quant Title : SVOA CALIBRATION

TIC Library : C:\DATABASE\NIST11.L
 TIC Integration Parameters: LSCINT.P

 Peak Number 5 (DEL) Alkane: Straight-Chai... Concentration Rank 3

R.T.	EstConc	Area	Relative to ISTD	R.T.
24.72	3.52 ng/ul	788760	Perylene-d12	23.47

Hit#	of	Tentative ID	MW	MolForm	CAS#	Qual
1	5	Tetratetracontane	619	C44H90	007098-22-8	91
2		Tetracosane	338	C24H50	000646-31-1	91
3		Heptadecane, 9-octyl-	352	C25H52	007225-64-1	91
4		Tetracosane	338	C24H50	000646-31-1	91
5		Triacontane	422	C30H62	000638-68-6	91



Data Path : Z:\SVOASRV\HPCHEM1\BNA N\DATA\BN061919\
 Data File : BN006410.D
 Acq On : 19 Jun 2019 23:14
 Operator : JU/SJ
 Sample : K3335-05
 Misc :
 ALS Vial : 17 Sample Multiplier: 1

Instrument :
 BNA_N
 ClientSampleID :
 A41Z7

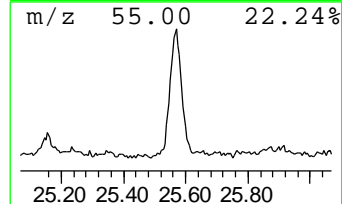
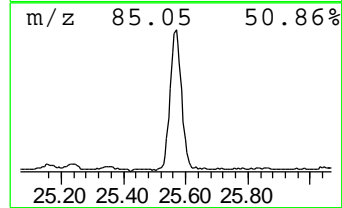
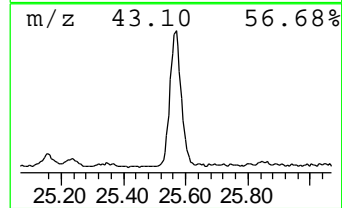
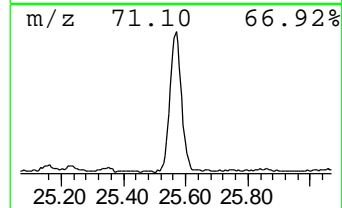
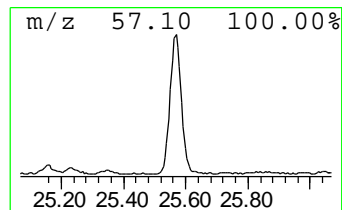
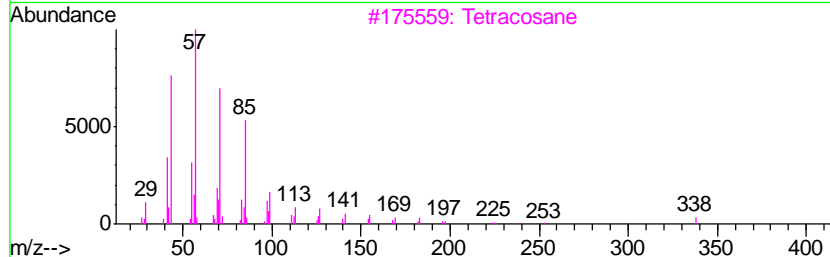
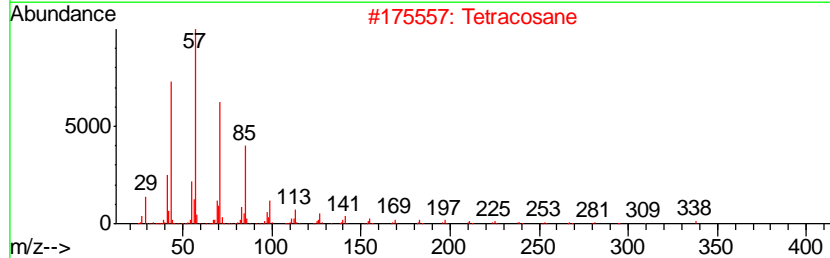
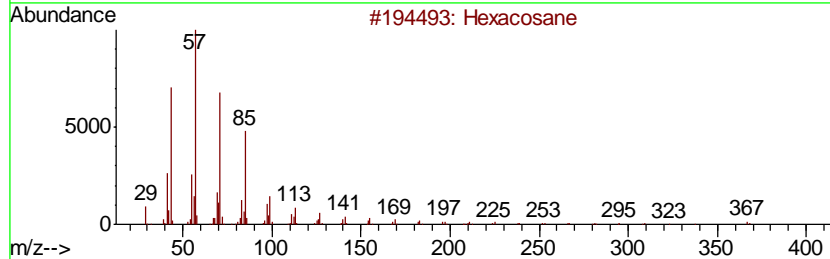
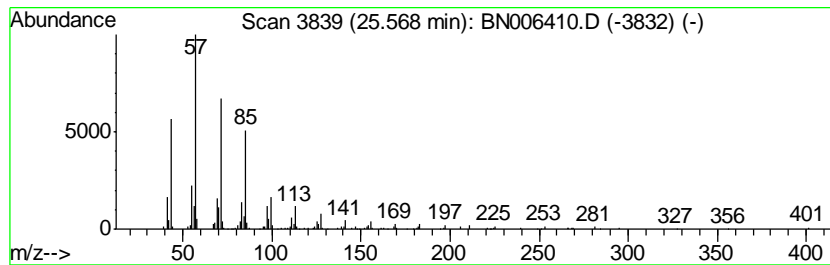
Quant Method : Z:\SVOASRV\HPCHEM1\BNA_N\METHODS\SOM-EPA-BN061919MA.M
 Quant Title : SVOA CALIBRATION

TIC Library : C:\DATABASE\NIST11.L
 TIC Integration Parameters: LSCINT.P

 Peak Number 6 (DEL) Alkane: Straight-Chai... Concentration Rank 5

R.T.	EstConc	Area	Relative to ISTD	R.T.
25.57	2.73 ng/ul	612001	Perylene-d12	23.47

Hit#	of	Tentative ID	MW	MolForm	CAS#	Qual
1	5	Hexacosane	366	C26H54	000630-01-3	93
2		Tetracosane	338	C24H50	000646-31-1	90
3		Tetracosane	338	C24H50	000646-31-1	90
4		Tetratetracontane	619	C44H90	007098-22-8	90
5		Triacontane	422	C30H62	000638-68-6	90



Data Path : Z:\SVOASRV\HPCHEM1\BNA_N\DATA\BN061919\
Data File : BN006410.D
Acq On : 19 Jun 2019 23:14
Operator : JU/SJ
Sample : K3335-05
Misc :
ALS Vial : 17 Sample Multiplier: 1

Instrument :
BNA_N
ClientSampleId :
A41Z7

Quant Method : Z:\SVOASRV\HPCHEM1\BNA_N\METHODS\SOM-EPA-BN061919MA.M
Quant Title : SVOA CALIBRATION

TIC Library : C:\DATABASE\NIST11.L
TIC Integration Parameters: LSCINT.P

TIC Top Hit name	RT	EstConc	Units	Response	--Internal Standard--			
					#	RT	Resp	Conc
(DEL) Alkane: Str...	21.83	2.2	ng/ul	470519	5	21.25	4242380	20.0
(DEL) Alkane: Str...	22.29	2.9	ng/ul	616649	5	21.25	4242380	20.0
(DEL) Alkane: Str...	22.79	5.3	ng/ul	1180170	6	23.47	4478010	20.0
(DEL) Alkane: Str...	23.98	5.1	ng/ul	1131960	6	23.47	4478010	20.0
(DEL) Alkane: Str...	24.72	3.5	ng/ul	788760	6	23.47	4478010	20.0
(DEL) Alkane: Str...	25.57	2.7	ng/ul	612001	6	23.47	4478010	20.0