

Data Path : Z:\SVOASRV\HPCHEM1\BNA_N\DATA\BN061919\
 Data File : BN006462.D
 Acq On : 21 Jun 2019 11:32
 Operator : JU/SJ
 Sample : K3360-23
 Misc :
 ALS Vial : 67 Sample Multiplier: 1

Instrument :
 BNA_N
 ClientSampled :
 A41T1

Integration Parameters: LSCINT.P

Integrator: RTE
 Smoothing : OFF
 Sampling : 1
 Start Thrs: 0.2
 Stop Thrs : 0

Filtering: 5
 Min Area: 0.1 % of largest Peak
 Max Peaks: 100
 Peak Location: TOP

If leading or trailing edge < 100 prefer < Baseline drop else tangent >
 Peak separation: 5

Method : Z:\SVOASRV\HPCHEM1\BNA_N\METHODS\SOM-EPA-BN061919MA.M
 Title : SVOA CALIBRATION

Signal : TIC

peak #	R.T. min	first scan	max scan	last scan	PK TY	peak height	corr. area	corr. % max.	% of total
1	3.134	22	25	31	rBV	54301	69698	0.39%	0.026%
2	3.858	144	148	154	rBV	21277	30646	0.17%	0.012%
3	4.181	198	203	211	rBV	137712	217544	1.22%	0.082%
4	4.352	228	232	239	rVB	12783	20763	0.12%	0.008%
5	4.764	297	302	315	rVB	300095	431031	2.41%	0.162%
6	4.940	325	332	342	rBV	41632	83276	0.47%	0.031%
7	6.805	642	649	650	rBV	1421432	1857627	10.40%	0.699%
8	6.828	650	653	670	rVV	2185543	3582026	20.05%	1.349%
9	6.963	670	676	692	rVB	1079356	1620165	9.07%	0.610%
10	7.158	702	709	722	rBV	1315579	2087011	11.68%	0.786%
11	7.622	781	788	797	rBV	948143	1522385	8.52%	0.573%
12	8.334	903	909	928	rBV	1625383	2660868	14.90%	1.002%
13	8.781	977	985	988	rBV	1258104	2036535	11.40%	0.767%
14	8.822	988	992	1009	rVB	1728221	2782119	15.58%	1.047%
15	8.987	1017	1020	1030	rVB5	9979	19973	0.11%	0.008%
16	9.193	1047	1055	1061	rVB	31643	48192	0.27%	0.018%
17	9.340	1072	1080	1091	rBV	3413655	5512424	30.86%	2.075%
18	9.499	1100	1107	1120	rBV	1015764	1708611	9.57%	0.643%
19	9.652	1126	1133	1145	rVB	83840	138951	0.78%	0.052%
20	10.063	1192	1203	1215	rBV2	4192955	9413333	52.70%	3.544%
21	10.404	1252	1261	1265	rBV	1465715	2508893	14.05%	0.945%
22	10.457	1265	1270	1279	rVV	4496564	7438937	41.65%	2.801%
23	10.552	1279	1286	1309	rVB	1522714	2755501	15.43%	1.037%
24	11.328	1409	1418	1423	rBV	476125	987956	5.53%	0.372%
25	11.940	1518	1522	1528	rVV	38664	65229	0.37%	0.025%
26	12.004	1528	1533	1543	rVB2	19099	37078	0.21%	0.014%
27	12.704	1645	1652	1675	rBV	4326059	6460531	36.17%	2.432%
28	13.098	1715	1719	1721	rBV	19606	25922	0.15%	0.010%
29	13.146	1721	1727	1741	rVV	5682260	8624947	48.29%	3.247%
30	13.693	1813	1820	1824	rBV	3053854	4180190	23.40%	1.574%
31	13.740	1824	1828	1835	rVB	639696	858094	4.80%	0.323%
32	13.969	1859	1867	1878	rBV	3486889	5035518	28.19%	1.896%
33	14.187	1900	1904	1910	rVB5	13640	19970	0.11%	0.008%
34	14.281	1913	1920	1931	rVV2	2280730	3330715	18.65%	1.254%

Data Path : Z:\SVOASRV\HPCHEM1\BNA_N\DATA\BN061919\
 Data File : BN006462.D
 Acq On : 21 Jun 2019 11:32
 Operator : JU/SJ
 Sample : K3360-23
 Misc :
 ALS Vial : 67 Sample Multiplier: 1

Instrument :
 BNA_N
 ClientSampleId :
 A41T1

Integration Parameters: LSCINT.P

Integrator: RTE
 Smoothing : OFF
 Sampling : 1
 Start Thrs: 0.2
 Stop Thrs : 0

Filtering: 5
 Min Area: 0.1 % of largest Peak
 Max Peaks: 100
 Peak Location: TOP

If leading or trailing edge < 100 prefer < Baseline drop else tangent >
 Peak separation: 5

Method : Z:\SVOASRV\HPCHEM1\BNA_N\METHODS\SOM-EPA-BN061919MA.M
 Title : SVOA CALIBRATION

35	14.504	1952	1958	1985	rBV	1164752	2120062	11.87%	0.798%
36	15.116	2052	2062	2071	rBV	6226974	8348637	46.74%	3.143%
37	15.281	2083	2090	2104	rBV	4459651	6309173	35.32%	2.375%
38	15.422	2108	2114	2127	rBV	1294483	1783215	9.98%	0.671%
39	15.551	2127	2136	2150	rVB	4559749	6236351	34.92%	2.348%
40	16.004	2209	2213	2220	rBV2	14846	25848	0.14%	0.010%
41	16.345	2264	2271	2279	rBV	3639206	4901090	27.44%	1.845%
42	16.451	2285	2289	2293	rBV2	47640	60658	0.34%	0.023%
43	16.510	2293	2299	2304	rVV	4821154	6430321	36.00%	2.421%
44	16.545	2304	2305	2309	rVB	76144	50208	0.28%	0.019%
45	16.681	2324	2328	2336	rVB2	17581	30972	0.17%	0.012%
46	16.857	2353	2358	2362	rVV	93891	142964	0.80%	0.054%
47	16.904	2362	2366	2372	rVB	103617	138801	0.78%	0.052%
48	17.039	2380	2389	2392	rBV	2814224	4155634	23.27%	1.565%
49	17.081	2392	2396	2401	rVV	6426493	8897010	49.81%	3.350%
50	17.139	2401	2406	2417	rVB2	4755159	6923238	38.76%	2.607%
51	17.269	2424	2428	2433	rVB3	51719	66478	0.37%	0.025%
52	17.451	2452	2459	2472	rVV	8088491	12061275	67.53%	4.541%
53	17.945	2537	2543	2551	rBV2	356192	856103	4.79%	0.322%
54	18.004	2551	2553	2564	rVB	81369	140948	0.79%	0.053%
55	18.175	2578	2582	2588	rBV	34543	70150	0.39%	0.026%
56	18.228	2588	2591	2595	rVV2	24052	41217	0.23%	0.016%
57	18.269	2595	2598	2606	rVB2	47567	83439	0.47%	0.031%
58	18.375	2611	2616	2621	rVB3	63824	91574	0.51%	0.034%
59	18.875	2697	2701	2709	rVB3	24281	34150	0.19%	0.013%
60	19.075	2731	2735	2748	rVB	54185	105658	0.59%	0.040%
61	19.233	2755	2762	2771	rBV2	106208	219538	1.23%	0.083%
62	19.333	2775	2779	2784	rVB	53360	71848	0.40%	0.027%
63	19.445	2792	2798	2805	rBV2	5853029	8087847	45.28%	3.045%
64	19.998	2885	2892	2898	rBV3	68772	132655	0.74%	0.050%
65	20.386	2952	2958	2963	rBV	7445475	8147314	45.61%	3.068%
66	20.498	2973	2977	2981	rBV	126975	152483	0.85%	0.057%
67	20.898	3041	3045	3049	rBV	75005	111215	0.62%	0.042%
68	20.969	3052	3057	3076	rVV	1046508	1952456	10.93%	0.735%
69	21.257	3100	3106	3109	rBV2	3352563	4798542	26.87%	1.807%
70	21.292	3109	3112	3124	rVV	8709176	11139815	62.37%	4.194%
71	21.410	3127	3132	3136	rBV	1129767	1212077	6.79%	0.456%

Data Path : Z:\SVOASRV\HPCHEM1\BNA_N\DATA\BN061919\
 Data File : BN006462.D
 Acq On : 21 Jun 2019 11:32
 Operator : JU/SJ
 Sample : K3360-23
 Misc :
 ALS Vial : 67 Sample Multiplier: 1

Instrument :
 BNA_N
 ClientSampleId :
 A41T1

Integration Parameters: LSCINT.P

Integrator: RTE
 Smoothing : OFF Filtering: 5
 Sampling : 1 Min Area: 0.1 % of largest Peak
 Start Thrs: 0.2 Max Peaks: 100
 Stop Thrs : 0 Peak Location: TOP

If leading or trailing edge < 100 prefer < Baseline drop else tangent >
 Peak separation: 5

Method : Z:\SVOASRV\HPCHEM1\BNA_N\METHODS\SOM-EPA-BN061919MA.M
 Title : SVOA CALIBRATION

72	21.839	3201	3205	3210	rBV	2056795	2438263	13.65%	0.918%
73	22.051	3235	3241	3251	rBV	10556534	14016780	78.47%	5.277%
74	22.298	3278	3283	3294	rBV	2800830	3749795	20.99%	1.412%
75	22.827	3363	3373	3376	rBV2	7818756	17861494	100.00%	6.725%
76	22.869	3376	3380	3388	rVB	6152042	9821656	54.99%	3.698%
77	23.145	3424	3427	3432	rVB	79733	112430	0.63%	0.042%
78	23.257	3441	3446	3453	rVB	401990	651652	3.65%	0.245%
79	23.351	3454	3462	3476	rBV2	5777446	11501643	64.39%	4.330%
80	23.486	3478	3485	3492	rBV	2286204	4137038	23.16%	1.558%
81	23.745	3526	3529	3536	rVB	81089	139409	0.78%	0.052%
82	23.998	3564	3572	3581	rBV	1887960	3602716	20.17%	1.356%
83	24.727	3688	3696	3704	rBV	920940	1980853	11.09%	0.746%
84	25.580	3834	3841	3852	rVB2	297961	752481	4.21%	0.283%
85	26.415	3970	3983	4002	rVB	3424654	10529506	58.95%	3.964%

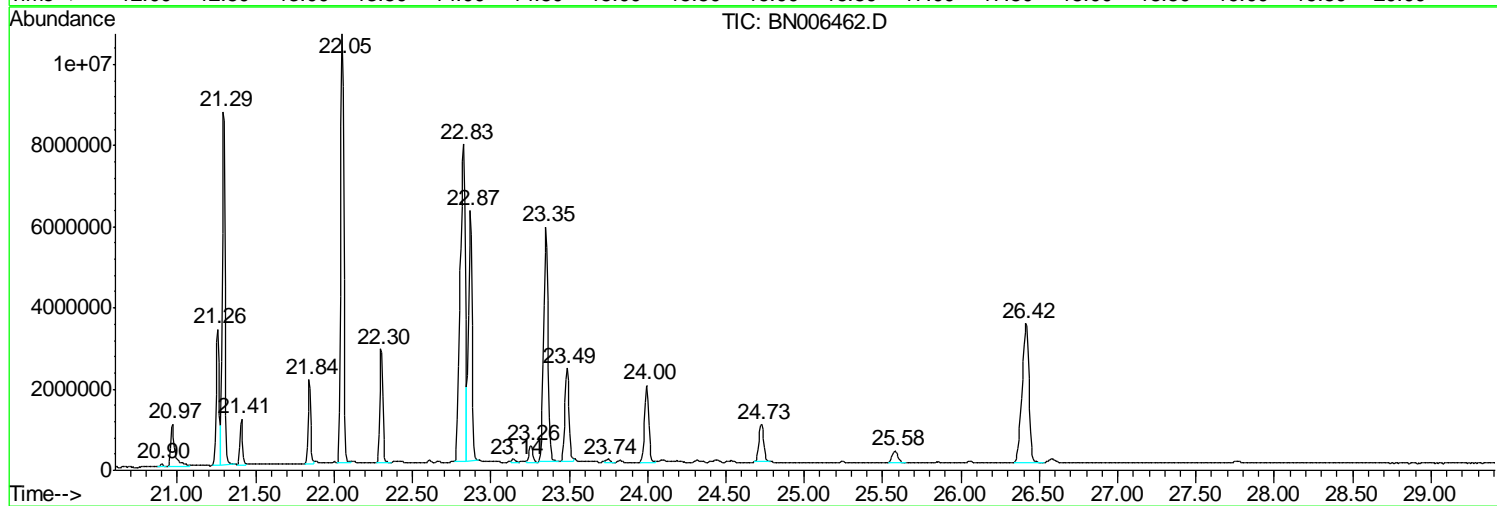
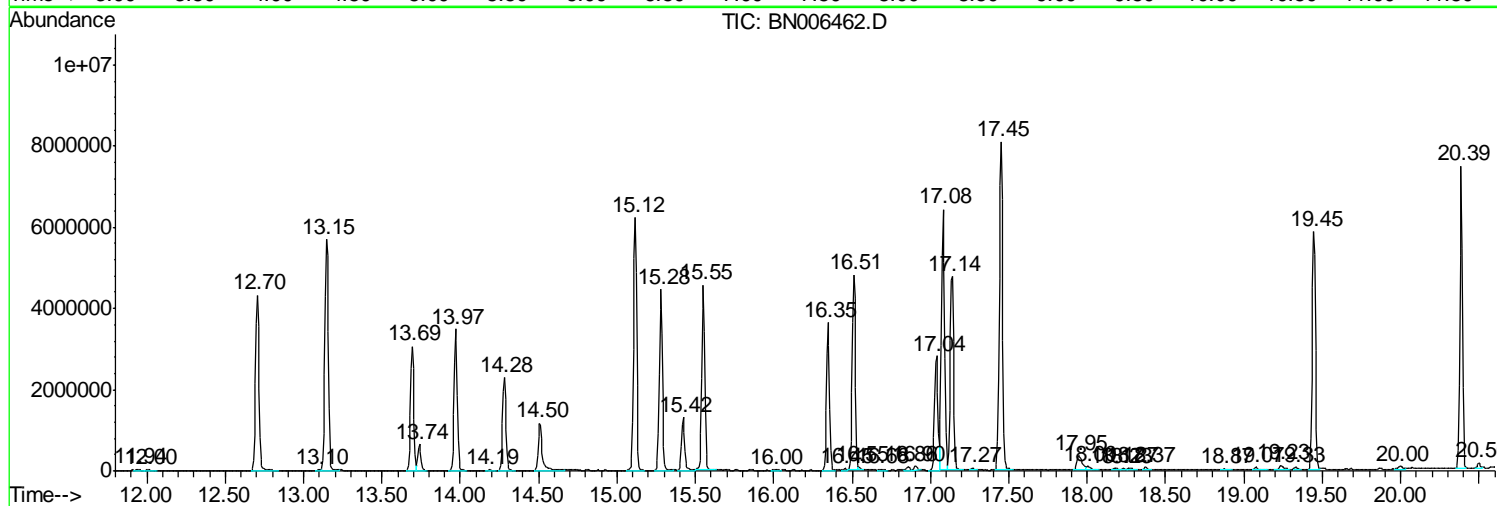
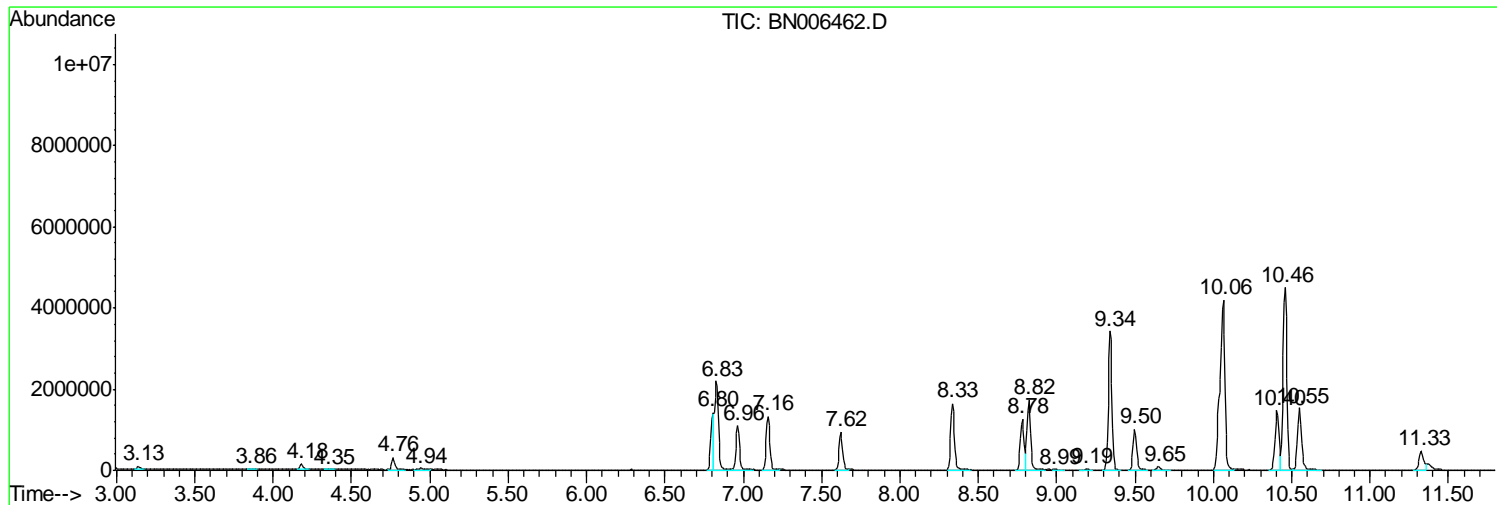
Sum of corrected areas: 265599339

Data Path : Z:\SVOASRV\HPCHEM1\BNA N\DATA\BN061919\
 Data File : BN006462.D
 Acq On : 21 Jun 2019 11:32
 Operator : JU/SJ
 Sample : K3360-23
 Misc :
 ALS Vial : 67 Sample Multiplier: 1

Instrument :
 BNA_N
 ClientSampleId :
 A41T1

Quant Method : Z:\SVOASRV\HPCHEM1\BNA_N\METHODS\SOM-EPA-BN061919MA.M
 Quant Title : SVOA CALIBRATION

TIC Library : C:\DATABASE\NIST11.L
 TIC Integration Parameters: LSCINT.P



Data Path : Z:\SVOASRV\HPCHEM1\BNA N\DATA\BN061919\
 Data File : BN006462.D
 Acq On : 21 Jun 2019 11:32
 Operator : JU/SJ
 Sample : K3360-23
 Misc :
 ALS Vial : 67 Sample Multiplier: 1

Instrument :
 BNA_N
 ClientSampled :
 A41T1

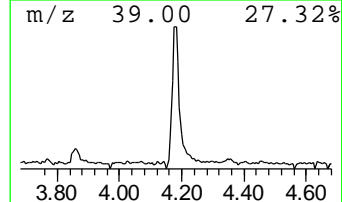
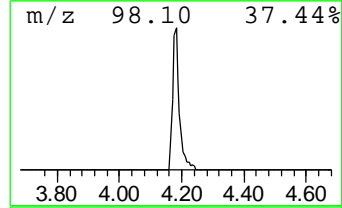
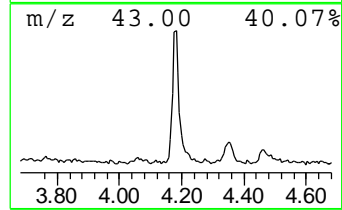
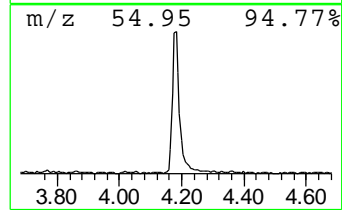
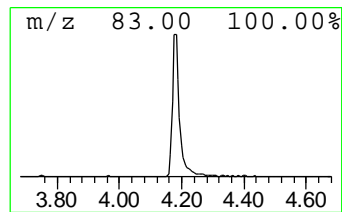
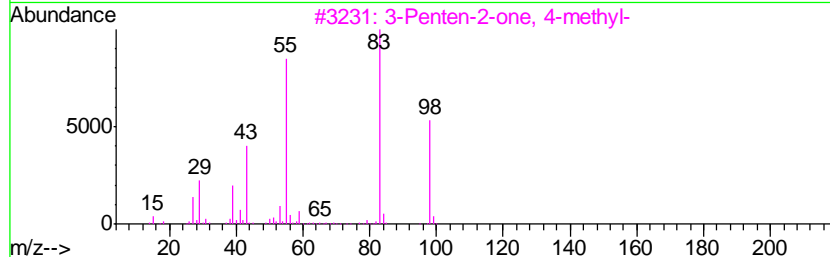
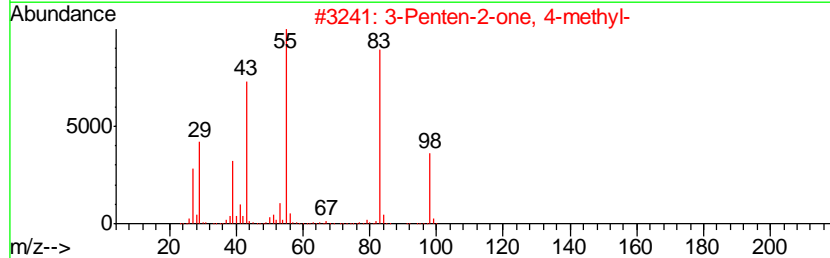
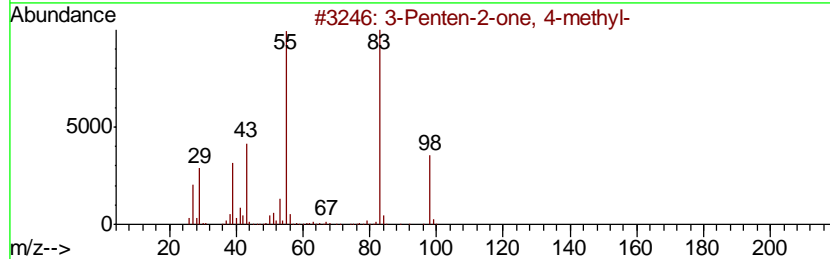
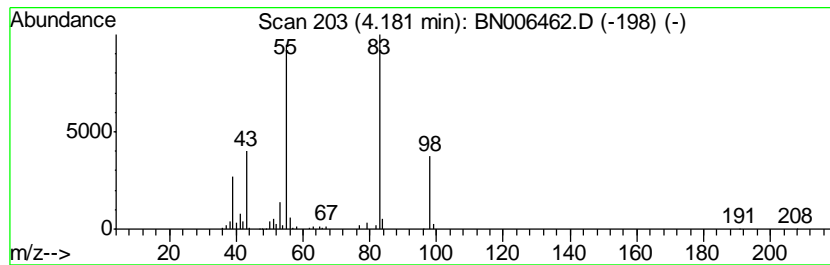
Quant Method : Z:\SVOASRV\HPCHEM1\BNA_N\METHODS\SOM-EPA-BN061919MA.M
 Quant Title : SVOA CALIBRATION

TIC Library : C:\DATABASE\NIST11.L
 TIC Integration Parameters: LSCINT.P

 Peak Number 1 3-Penten-2-one, 4-methyl- Concentration Rank 11

R.T.	EstConc	Area	Relative to ISTD	R.T.
4.18	2.86 ng/ul	217544	1,4-Dichlorobenzene-d4	7.62

Hit#	of	Tentative ID	MW	MolForm	CAS#	Qual
1	5	3-Penten-2-one, 4-methyl-	98	C6H10O	000141-79-7	94
2		3-Penten-2-one, 4-methyl-	98	C6H10O	000141-79-7	91
3		3-Penten-2-one, 4-methyl-	98	C6H10O	000141-79-7	90
4		3-Hexen-2-one	98	C6H10O	000763-93-9	87
5		2-Pentene, 2,4-dimethyl-	98	C7H14	000625-65-0	80



Data Path : Z:\SVOASRV\HPCHEM1\BNA N\DATA\BN061919\
 Data File : BN006462.D
 Acq On : 21 Jun 2019 11:32
 Operator : JU/SJ
 Sample : K3360-23
 Misc :
 ALS Vial : 67 Sample Multiplier: 1

Instrument :
 BNA_N
 ClientSampled :
 A41T1

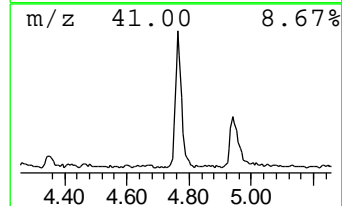
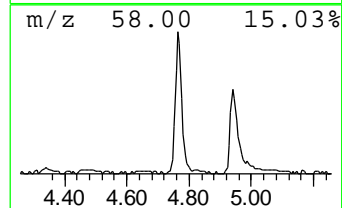
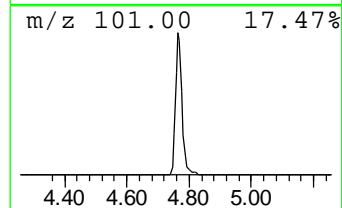
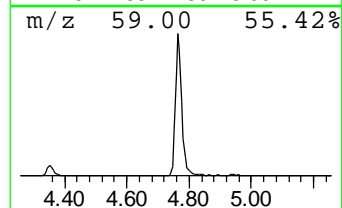
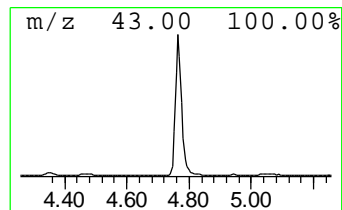
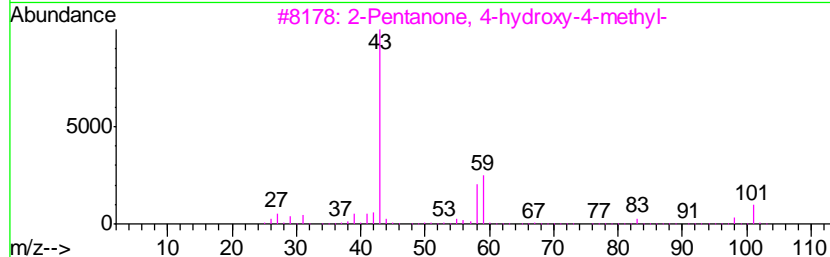
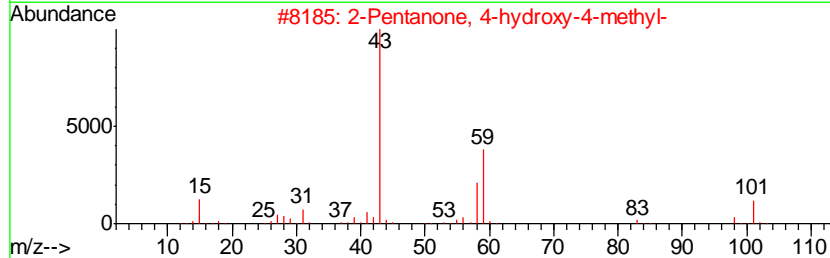
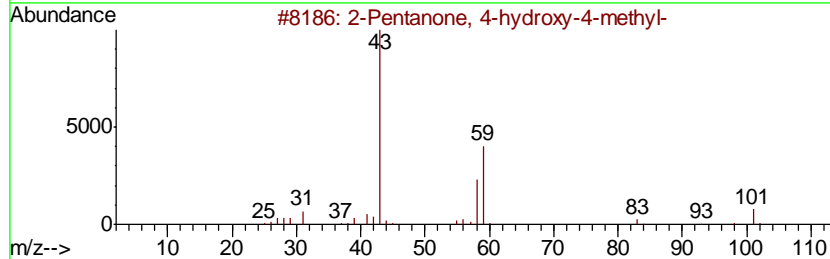
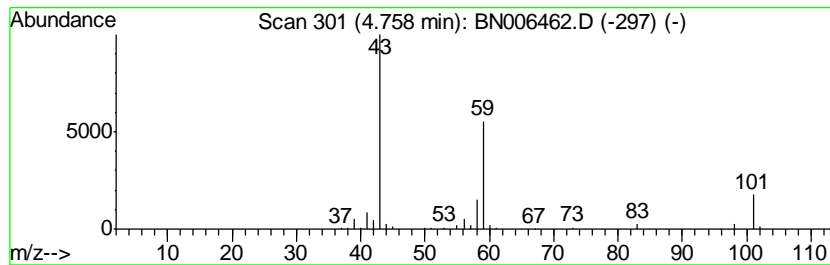
Quant Method : Z:\SVOASRV\HPCHEM1\BNA_N\METHODS\SOM-EPA-BN061919MA.M
 Quant Title : SVOA CALIBRATION

TIC Library : C:\DATABASE\NIST11.L
 TIC Integration Parameters: LSCINT.P

 Peak Number 2 2-Pentanone, 4-hydroxy-4-me... Concentration Rank 6

R.T.	EstConc	Area	Relative to ISTD	R.T.
4.76	5.66 ng/ul	431031	1,4-Dichlorobenzene-d4	7.62

Hit#	of	Tentative ID	MW	MolForm	CAS#	Qual
1	5	2-Pentanone, 4-hydroxy-4-methyl-	116	C6H12O2	000123-42-2	45
2		2-Pentanone, 4-hydroxy-4-methyl-	116	C6H12O2	000123-42-2	38
3		2-Pentanone, 4-hydroxy-4-methyl-	116	C6H12O2	000123-42-2	37
4		Acetic acid, cyano-, 1,1-dimethyl...	141	C7H11NO2	001116-98-9	25
5		2-Pentanone, 4-hydroxy-4-methyl-	116	C6H12O2	000123-42-2	25



Data Path : Z:\SVOASRV\HPCHEM1\BNA N\DATA\BN061919\
 Data File : BN006462.D
 Acq On : 21 Jun 2019 11:32
 Operator : JU/SJ
 Sample : K3360-23
 Misc :
 ALS Vial : 67 Sample Multiplier: 1

Instrument :
 BNA_N
 ClientSampled :
 A41T1

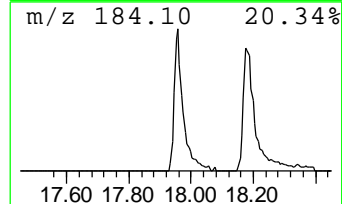
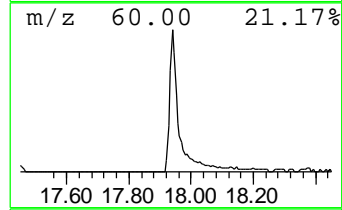
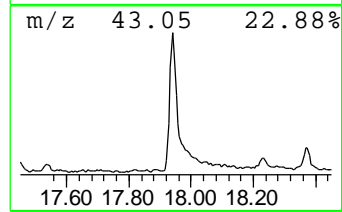
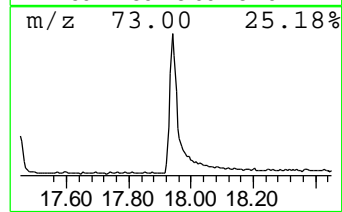
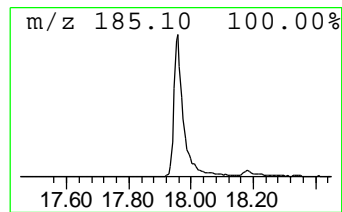
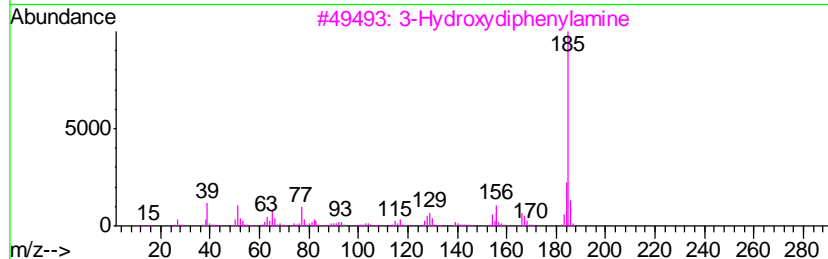
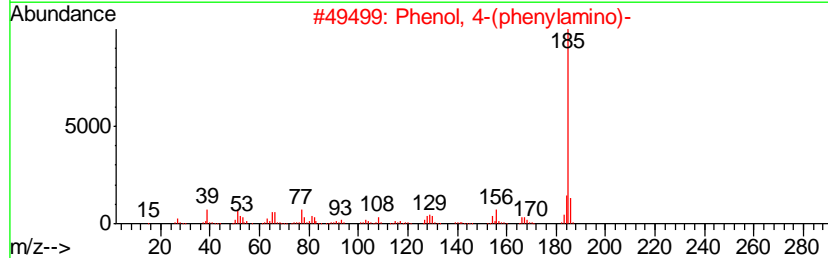
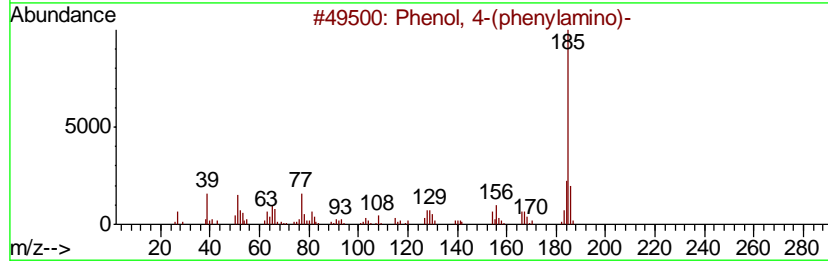
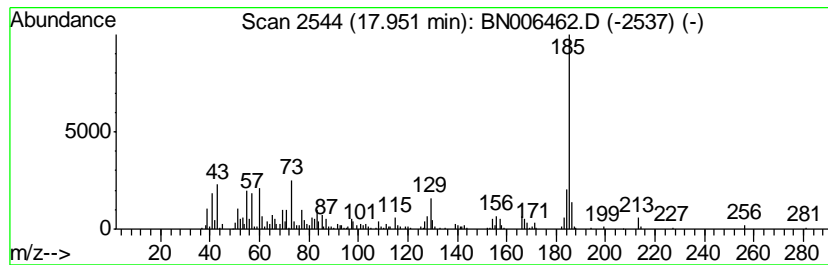
Quant Method : Z:\SVOASRV\HPCHEM1\BNA_N\METHODS\SOM-EPA-BN061919MA.M
 Quant Title : SVOA CALIBRATION

TIC Library : C:\DATABASE\NIST11.L
 TIC Integration Parameters: LSCINT.P

 Peak Number 3 Phenol, 4-(phenylamino)- Concentration Rank 8

R.T.	EstConc	Area	Relative to ISTD	R.T.
17.95	4.12 ng/ul	856103	Phenanthrene-d10	17.04

Hit#	of	Tentative ID	MW	MolForm	CAS#	Qual
1	5	Phenol, 4-(phenylamino)-	185	C12H11NO	000122-37-2	96
2		Phenol, 4-(phenylamino)-	185	C12H11NO	000122-37-2	90
3		3-Hydroxydiphenylamine	185	C12H11NO	000101-18-8	89
4		n-Hexadecanoic acid	256	C16H32O2	000057-10-3	86
5		n-Hexadecanoic acid	256	C16H32O2	000057-10-3	83



Data Path : Z:\SVOASRV\HPCHEM1\BNA N\DATA\BN061919\
 Data File : BN006462.D
 Acq On : 21 Jun 2019 11:32
 Operator : JU/SJ
 Sample : K3360-23
 Misc :
 ALS Vial : 67 Sample Multiplier: 1

Instrument :
 BNA_N
 ClientSampleID :
 A41T1

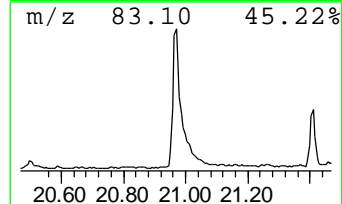
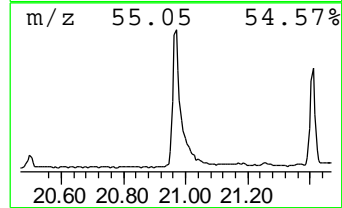
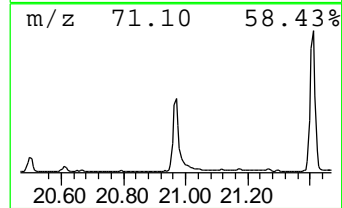
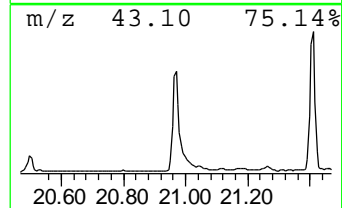
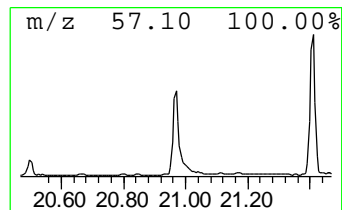
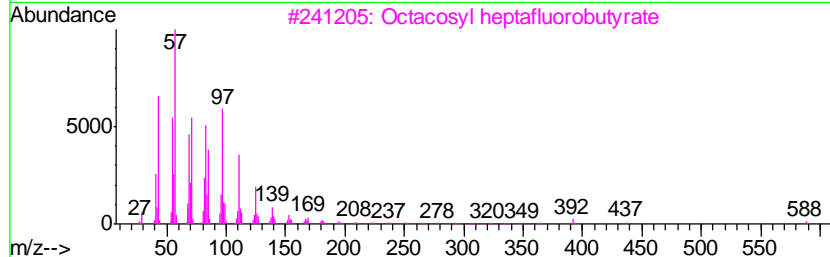
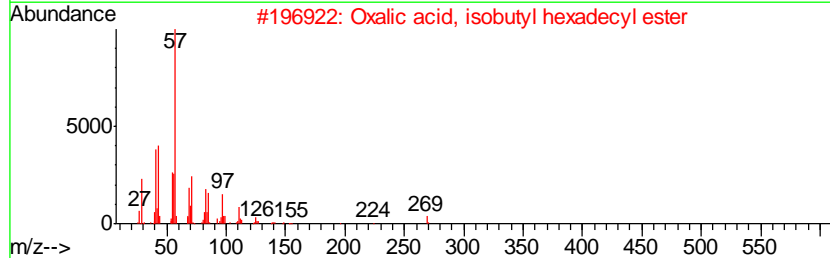
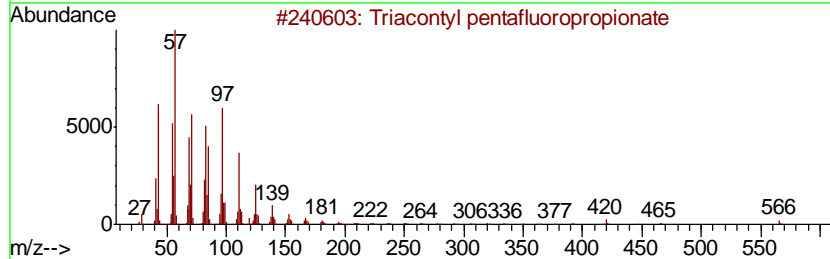
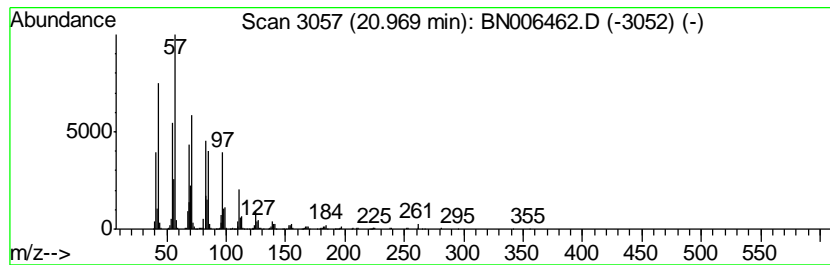
Quant Method : Z:\SVOASRV\HPCHEM1\BNA_N\METHODS\SOM-EPA-BN061919MA.M
 Quant Title : SVOA CALIBRATION

TIC Library : C:\DATABASE\NIST11.L
 TIC Integration Parameters: LSCINT.P

 Peak Number 4 Triacontyl pentafluoropropi... Concentration Rank 5

R.T.	EstConc	Area	Relative to ISTD	R.T.
20.97	8.14 ng/ul	1952460	Chrysene-d12	21.26

Hit#	of	Tentative ID	MW	MolForm	CAS#	Qual
1	5	Triacontyl pentafluoropropionate	584	C33H61F5O2	1000351-80-0	91
2		Oxalic acid, isobutyl hexadecyl ...	370	C22H42O4	1000309-38-1	91
3		Octacosyl heptafluorobutyrate	606	C32H57F7O2	1000351-83-6	91
4		Octacosyl trifluoroacetate	506	C30H57F3O2	1000351-74-9	90
5		1-Docosene	308	C22H44	001599-67-3	76



Data Path : Z:\SVOASRV\HPCHEM1\BNA N\DATA\BN061919\
 Data File : BN006462.D
 Acq On : 21 Jun 2019 11:32
 Operator : JU/SJ
 Sample : K3360-23
 Misc :
 ALS Vial : 67 Sample Multiplier: 1

Instrument :
 BNA_N
 ClientSampleID :
 A41T1

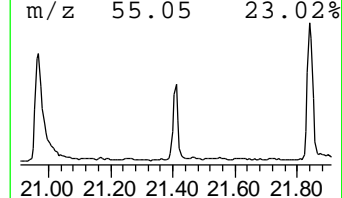
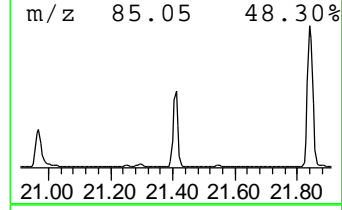
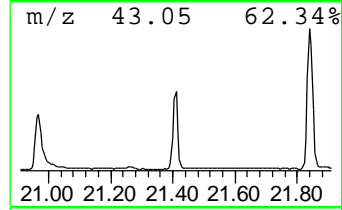
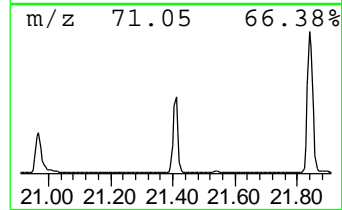
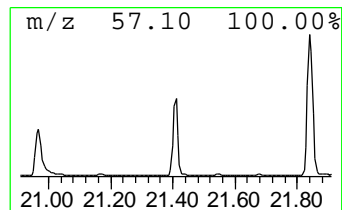
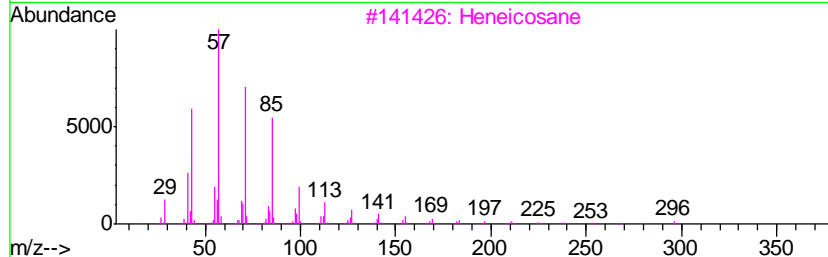
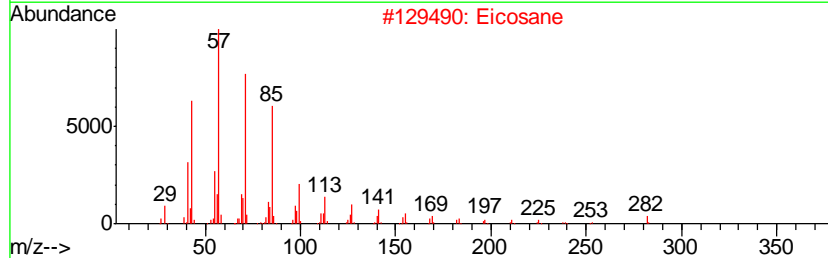
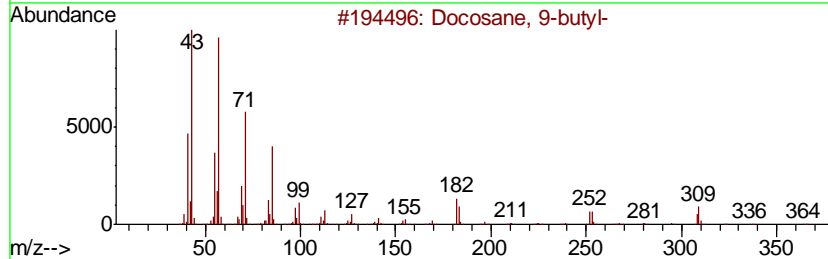
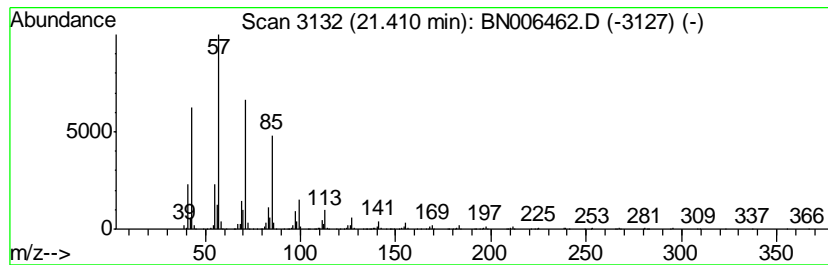
Quant Method : Z:\SVOASRV\HPCHEM1\BNA_N\METHODS\SOM-EPA-BN061919MA.M
 Quant Title : SVOA CALIBRATION

TIC Library : C:\DATABASE\NIST11.L
 TIC Integration Parameters: LSCINT.P

 Peak Number 5 (DEL) Alkane: Straight-Chai... Concentration Rank 7

R.T.	EstConc	Area	Relative to ISTD	R.T.
21.41	5.05 ng/ul	1212080	Chrysene-d12	21.26

Hit#	of	Tentative ID	MW	MolForm	CAS#	Qual
1	5	Docosane, 9-butyl-	366	C26H54	055282-14-9	94
2		Eicosane	282	C20H42	000112-95-8	93
3		Heneicosane	296	C21H44	000629-94-7	91
4		Hexacosane	366	C26H54	000630-01-3	91
5		Docosane, 11-butyl-	366	C26H54	013475-76-8	91



Data Path : Z:\SVOASRV\HPCHEM1\BNA N\DATA\BN061919\
 Data File : BN006462.D
 Acq On : 21 Jun 2019 11:32
 Operator : JU/SJ
 Sample : K3360-23
 Misc :
 ALS Vial : 67 Sample Multiplier: 1

Instrument :
 BNA_N
 ClientSampled :
 A41T1

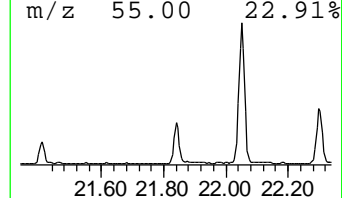
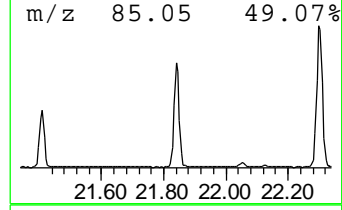
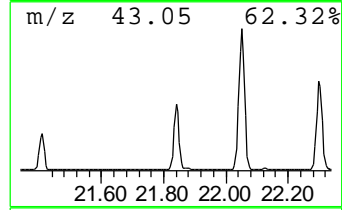
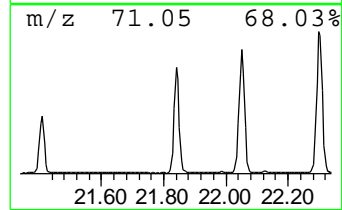
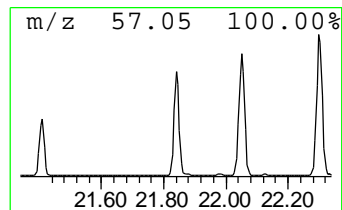
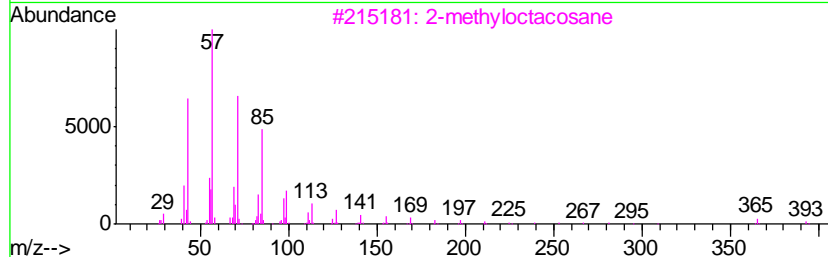
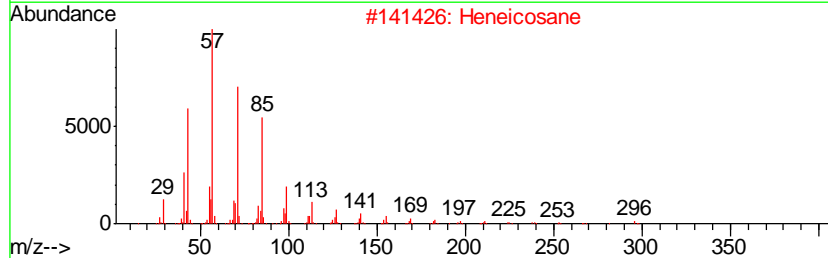
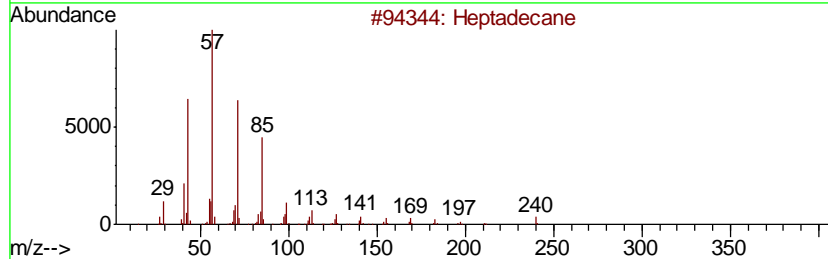
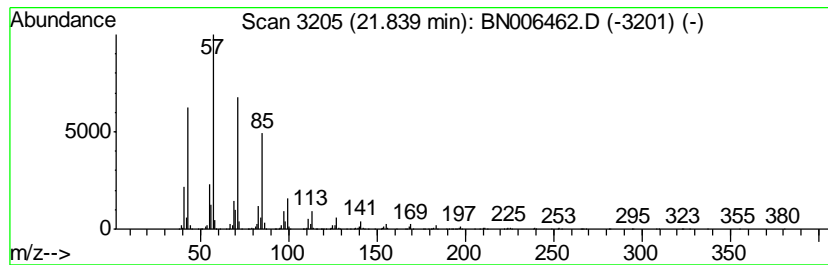
Quant Method : Z:\SVOASRV\HPCHEM1\BNA_N\METHODS\SOM-EPA-BN061919MA.M
 Quant Title : SVOA CALIBRATION

TIC Library : C:\DATABASE\NIST11.L
 TIC Integration Parameters: LSCINT.P

 Peak Number 6 (DEL) Alkane: Straight-Chai... Concentration Rank 3

R.T.	EstConc	Area	Relative to ISTD	R.T.
21.84	10.16 ng/ul	2438260	Chrysene-d12	21.26

Hit#	of	Tentative ID	MW	MolForm	CAS#	Qual
1	5	Heptadecane	240	C17H36	000629-78-7	94
2		Heneicosane	296	C21H44	000629-94-7	91
3		2-methyloctacosane	408	C29H60	1000376-72-8	91
4		Octacosane	394	C28H58	000630-02-4	91
5		Octacosane	394	C28H58	000630-02-4	91



Data Path : Z:\SVOASRV\HPCHEM1\BNA N\DATA\BN061919\
 Data File : BN006462.D
 Acq On : 21 Jun 2019 11:32
 Operator : JU/SJ
 Sample : K3360-23
 Misc :
 ALS Vial : 67 Sample Multiplier: 1

Instrument :
 BNA_N
 ClientSampled :
 A41T1

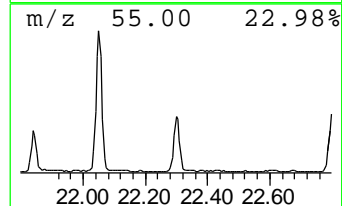
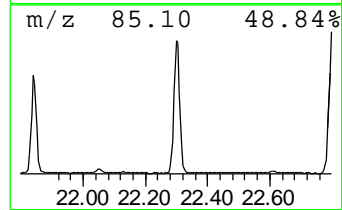
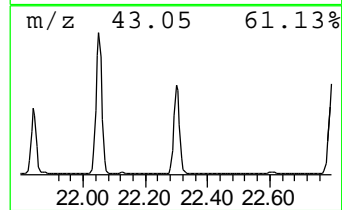
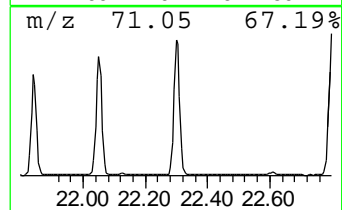
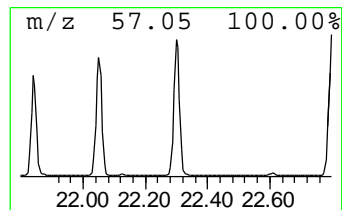
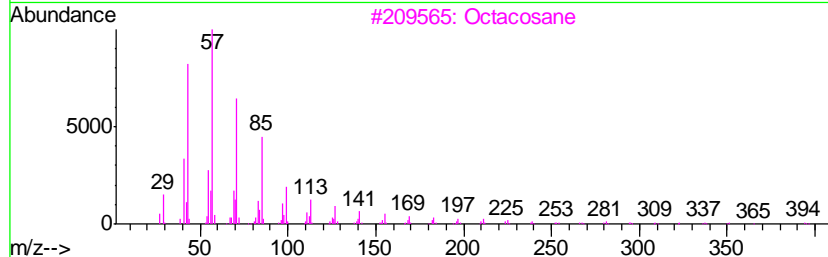
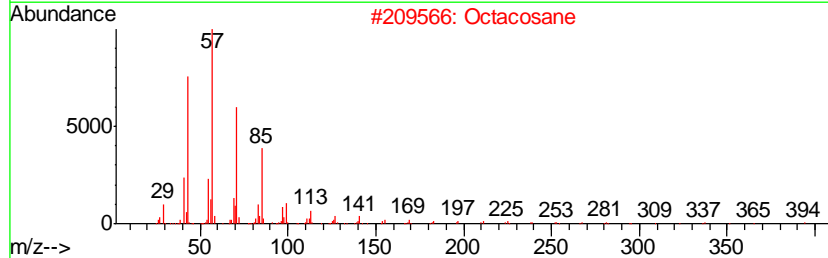
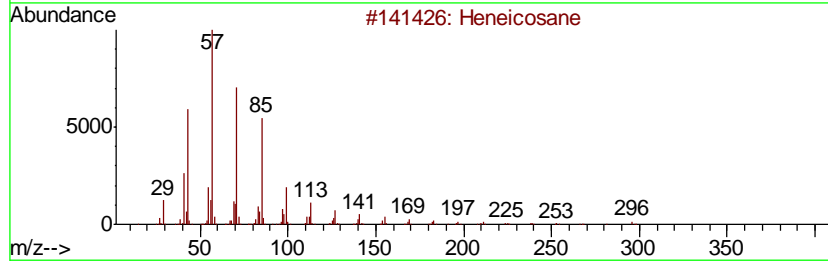
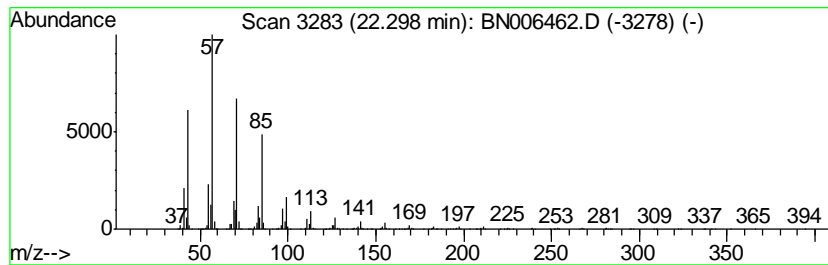
Quant Method : Z:\SVOASRV\HPCHEM1\BNA_N\METHODS\SOM-EPA-BN061919MA.M
 Quant Title : SVOA CALIBRATION

TIC Library : C:\DATABASE\NIST11.L
 TIC Integration Parameters: LSCINT.P

 Peak Number 7 (DEL) Alkane: Straight-Chai... Concentration Rank 2

R.T.	EstConc	Area	Relative to ISTD	R.T.
22.30	15.63 ng/ul	3749800	Chrysene-d12	21.26

Hit#	of	Tentative ID	MW	MolForm	CAS#	Qual
1	5	Heneicosane	296	C21H44	000629-94-7	91
2		Octacosane	394	C28H58	000630-02-4	91
3		Octacosane	394	C28H58	000630-02-4	91
4		2-methyloctacosane	408	C29H60	1000376-72-8	91
5		Triacontane	422	C30H62	000638-68-6	91



Data Path : Z:\SVOASRV\HPCHEM1\BNA N\DATA\BN061919\
 Data File : BN006462.D
 Acq On : 21 Jun 2019 11:32
 Operator : JU/SJ
 Sample : K3360-23
 Misc :
 ALS Vial : 67 Sample Multiplier: 1

Instrument :
 BNA_N
 ClientSampled :
 A41T1

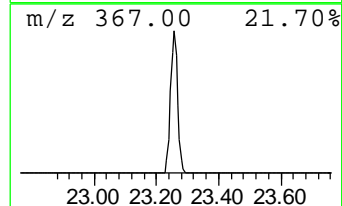
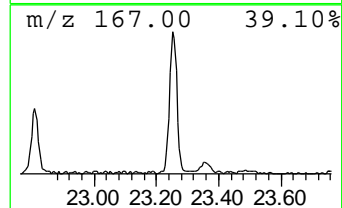
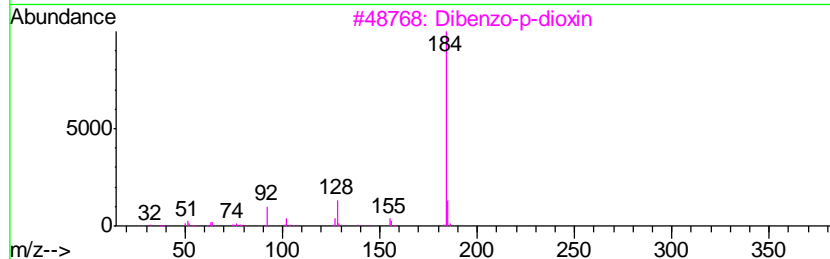
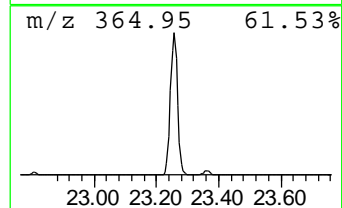
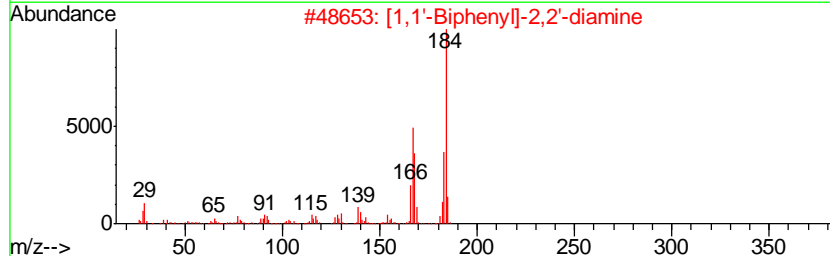
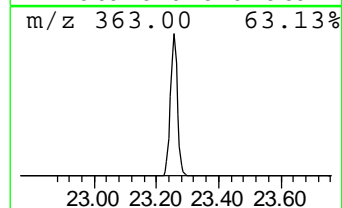
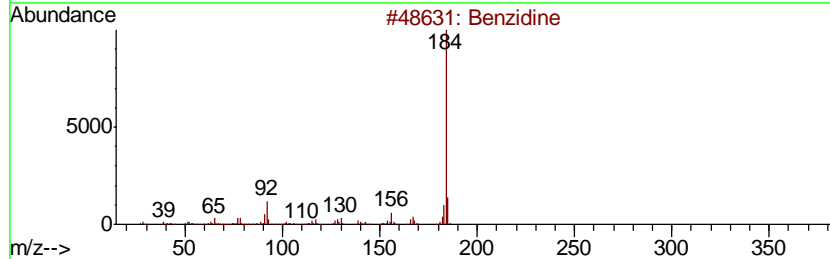
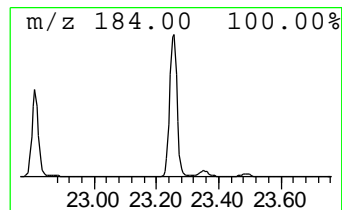
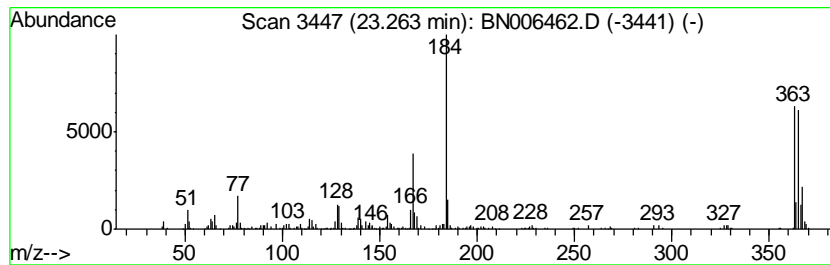
Quant Method : Z:\SVOASRV\HPCHEM1\BNA_N\METHODS\SOM-EPA-BN061919MA.M
 Quant Title : SVOA CALIBRATION

TIC Library : C:\DATABASE\NIST11.L
 TIC Integration Parameters: LSCINT.P

 Peak Number 8 unknown-01 Concentration Rank 10

R.T.	EstConc	Area	Relative to ISTD	R.T.
23.26	3.15 ng/ul	651652	Perylene-d12	23.49

Hit#	of	Tentative ID	MW	MolForm	CAS#	Qual
1	5	Benzidine	184	C12H12N2	000092-87-5	41
2		[1,1'-Biphenyl]-2,2'-diamine	184	C12H12N2	001454-80-4	41
3		Dibenzo-p-dioxin	184	C12H8O2	000262-12-4	38
4		4-Cyclohepta-2,4,6-trienyl-phenol	184	C13H12O	091902-42-0	35
5		3-Biphenylmethanol	184	C13H12O	069605-90-9	35



Data Path : Z:\SVOASRV\HPCHEM1\BNA N\DATA\BN061919\
 Data File : BN006462.D
 Acq On : 21 Jun 2019 11:32
 Operator : JU/SJ
 Sample : K3360-23
 Misc :
 ALS Vial : 67 Sample Multiplier: 1

Instrument :
 BNA_N
 ClientSampled :
 A41T1

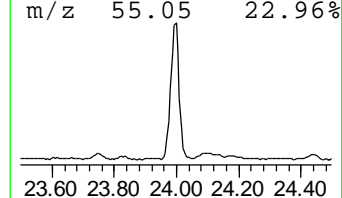
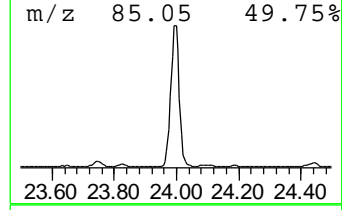
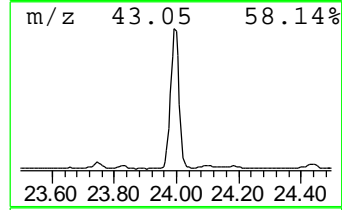
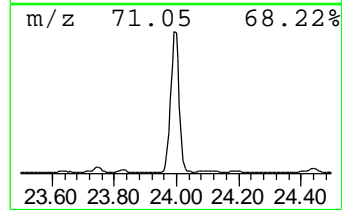
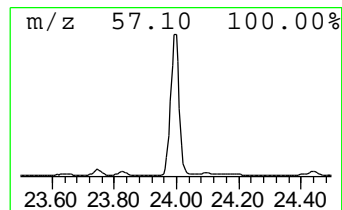
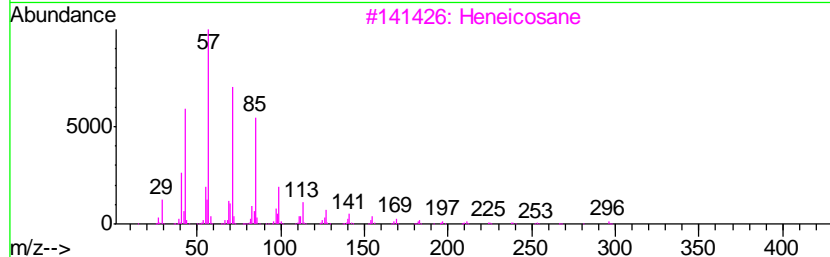
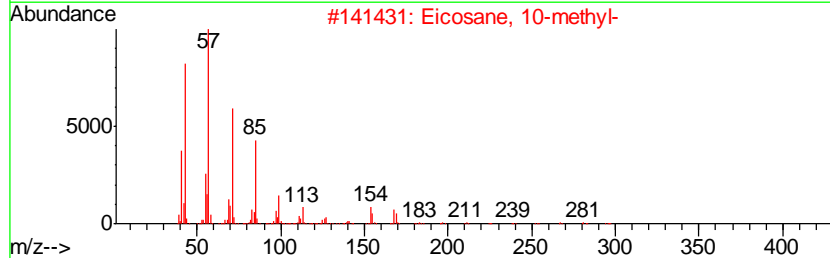
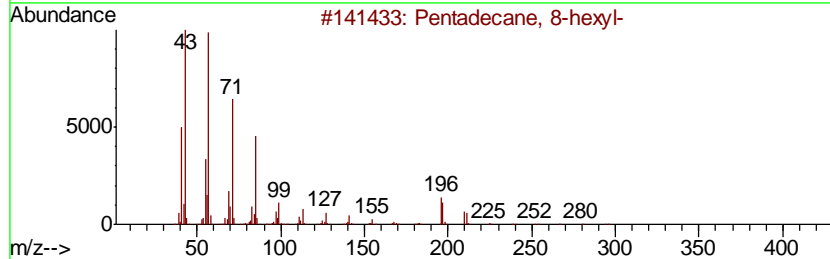
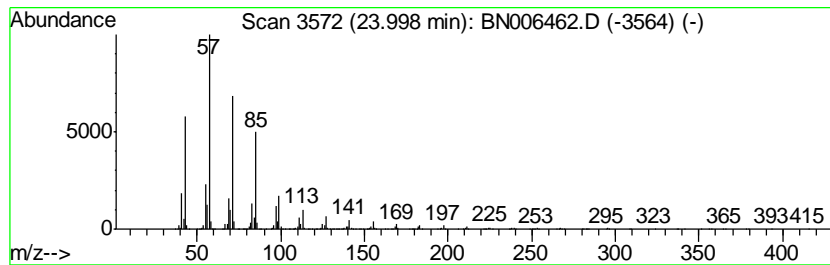
Quant Method : Z:\SVOASRV\HPCHEM1\BNA_N\METHODS\SOM-EPA-BN061919MA.M
 Quant Title : SVOA CALIBRATION

TIC Library : C:\DATABASE\NIST11.L
 TIC Integration Parameters: LSCINT.P

 Peak Number 9 (DEL) Alkane: Straight-Chai... Concentration Rank 1

R.T.	EstConc	Area	Relative to ISTD	R.T.
24.00	17.42 ng/ul	3602720	Perylene-d12	23.49

Hit#	of	Tentative ID	MW	MolForm	CAS#	Qual
1	5	Pentadecane, 8-hexyl-	296	C21H44	013475-75-7	94
2		Eicosane, 10-methyl-	296	C21H44	054833-23-7	93
3		Heneicosane	296	C21H44	000629-94-7	91
4		Octacosane	394	C28H58	000630-02-4	91
5		2-methyloctacosane	408	C29H60	1000376-72-8	91



Data Path : Z:\SVOASRV\HPCHEM1\BNA N\DATA\BN061919\
 Data File : BN006462.D
 Acq On : 21 Jun 2019 11:32
 Operator : JU/SJ
 Sample : K3360-23
 Misc :
 ALS Vial : 67 Sample Multiplier: 1

Instrument :
 BNA_N
 ClientSampled :
 A41T1

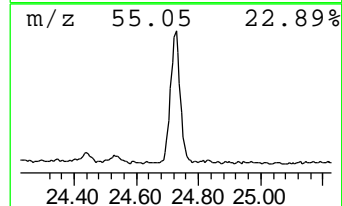
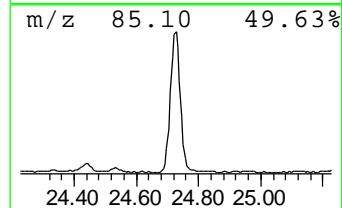
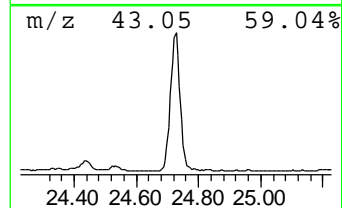
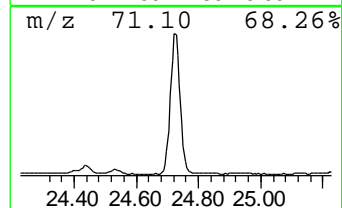
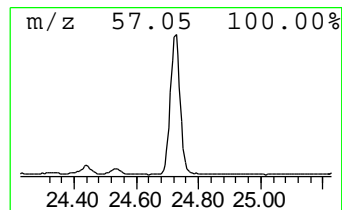
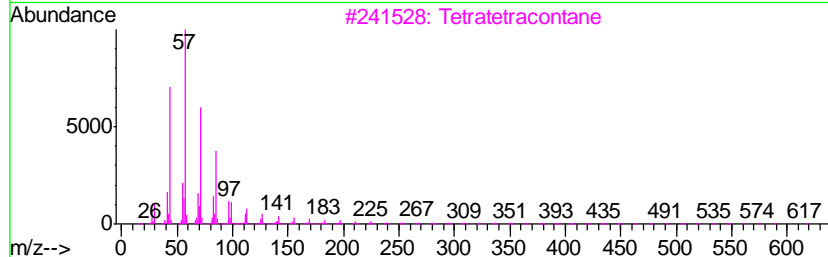
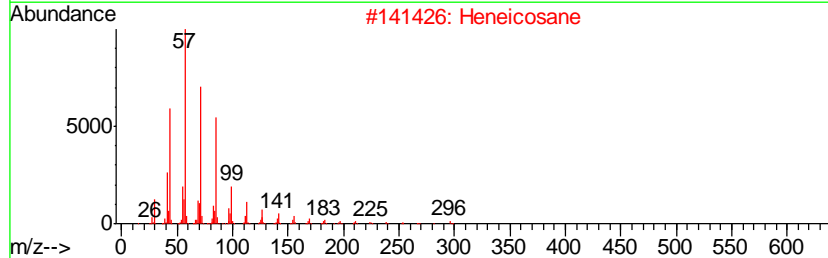
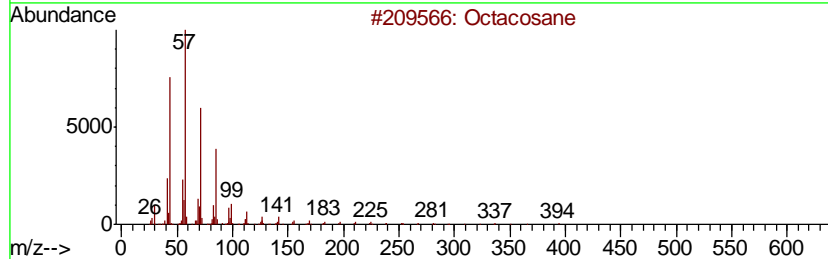
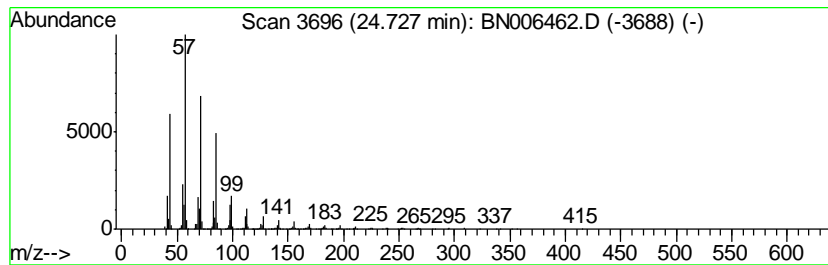
Quant Method : Z:\SVOASRV\HPCHEM1\BNA_N\METHODS\SOM-EPA-BN061919MA.M
 Quant Title : SVOA CALIBRATION

TIC Library : C:\DATABASE\NIST11.L
 TIC Integration Parameters: LSCINT.P

 Peak Number 10 (DEL) Alkane: Straight-Chai... Concentration Rank 4

R.T.	EstConc	Area	Relative to ISTD	R.T.
24.73	9.58 ng/ul	1980850	Perylene-d12	23.49

Hit#	of	Tentative ID	MW	MolForm	CAS#	Qual
1	5	Octacosane	394	C28H58	000630-02-4	91
2		Heneicosane	296	C21H44	000629-94-7	91
3		Tetratetracontane	619	C44H90	007098-22-8	91
4		2-methyloctacosane	408	C29H60	1000376-72-8	91
5		Heneicosane, 11-(1-ethylpropyl)-	366	C26H54	055282-11-6	91



Data Path : Z:\SVOASRV\HPCHEM1\BNA N\DATA\BN061919\
 Data File : BN006462.D
 Acq On : 21 Jun 2019 11:32
 Operator : JU/SJ
 Sample : K3360-23
 Misc :
 ALS Vial : 67 Sample Multiplier: 1

Instrument :
 BNA_N
 ClientSampled :
 A41T1

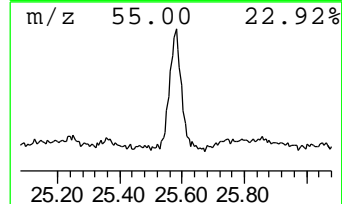
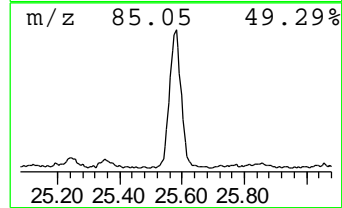
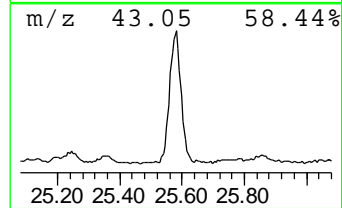
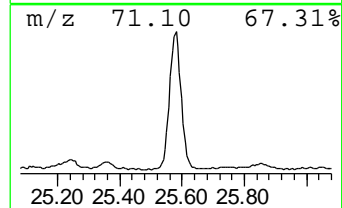
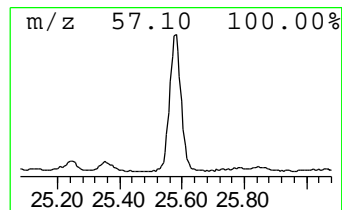
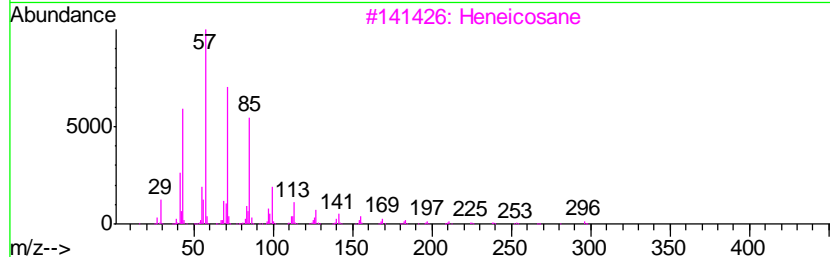
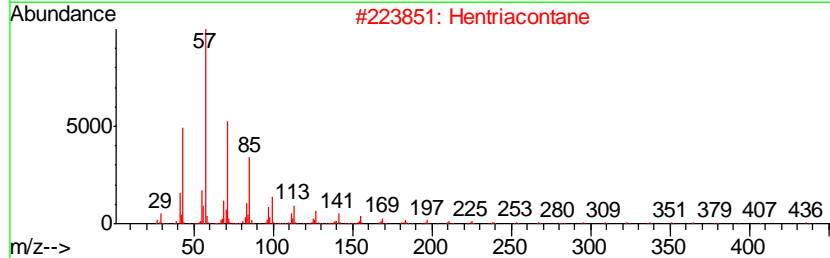
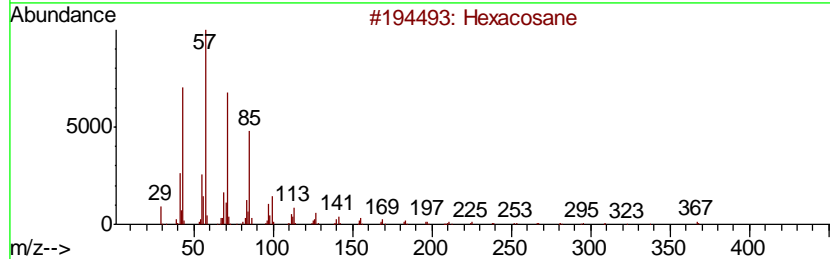
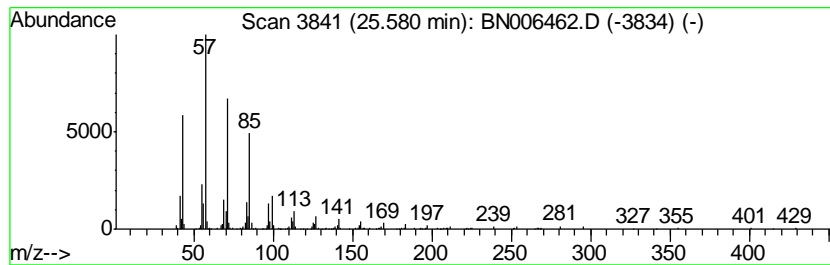
Quant Method : Z:\SVOASRV\HPCHEM1\BNA_N\METHODS\SOM-EPA-BN061919MA.M
 Quant Title : SVOA CALIBRATION

TIC Library : C:\DATABASE\NIST11.L
 TIC Integration Parameters: LSCINT.P

 Peak Number 11 (DEL) Alkane: Straight-Chai... Concentration Rank 9

R.T.	EstConc	Area	Relative to ISTD	R.T.
25.58	3.64 ng/ul	752481	Perylene-d12	23.49

Hit#	of	Tentative ID	MW	MolForm	CAS#	Qual
1	5	Hexacosane	366	C26H54	000630-01-3	93
2		Hentriacontane	437	C31H64	000630-04-6	90
3		Heneicosane	296	C21H44	000629-94-7	90
4		2-methyloctacosane	408	C29H60	1000376-72-8	90
5		Heneicosane, 11-(1-ethylpropyl)-	366	C26H54	055282-11-6	87



Data Path : Z:\SVOASRV\HPCHEM1\BNA_N\DATA\BN061919\
 Data File : BN006462.D
 Acq On : 21 Jun 2019 11:32
 Operator : JU/SJ
 Sample : K3360-23
 Misc :
 ALS Vial : 67 Sample Multiplier: 1

Instrument :
 BNA_N
 ClientSampleId :
 A41T1

Quant Method : Z:\SVOASRV\HPCHEM1\BNA_N\METHODS\SOM-EPA-BN061919MA.M
 Quant Title : SVOA CALIBRATION

TIC Library : C:\DATABASE\NIST11.L
 TIC Integration Parameters: LSCINT.P

TIC Top Hit name	RT	EstConc	Units	Response	--Internal Standard--			
					#	RT	Resp	Conc
3-Penten-2-one, 4...	4.18	2.9	ng/ul	217544	1	7.62	1522390	20.0
2-Pentanone, 4-hy...	4.76	5.7	ng/ul	431031	1	7.62	1522390	20.0
Phenol, 4-(phenyl...	17.95	4.1	ng/ul	856103	4	17.04	4155630	20.0
Triacetyl pentaf...	20.97	8.1	ng/ul	1952460	5	21.26	4798540	20.0
(DEL) Alkane: Str...	21.41	5.0	ng/ul	1212080	5	21.26	4798540	20.0
(DEL) Alkane: Str...	21.84	10.2	ng/ul	2438260	5	21.26	4798540	20.0
(DEL) Alkane: Str...	22.30	15.6	ng/ul	3749800	5	21.26	4798540	20.0
unknown-01	23.26	3.1	ng/ul	651652	6	23.49	4137040	20.0
(DEL) Alkane: Str...	24.00	17.4	ng/ul	3602720	6	23.49	4137040	20.0
(DEL) Alkane: Str...	24.73	9.6	ng/ul	1980850	6	23.49	4137040	20.0
(DEL) Alkane: Str...	25.58	3.6	ng/ul	752481	6	23.49	4137040	20.0