

Data Path : Z:\SVOASRV\HPCHEM1\BNA_N\DATA\BN062018\
 Data File : BN001898.D
 Acq On : 20 Jun 2018 22:05
 Operator : JU/SJ
 Sample : J3527-06
 Misc :
 ALS Vial : 21 Sample Multiplier: 1

Instrument :
 BNA_N
 ClientSampled :

Quant Time: Jun 21 01:12:15 2018
 Quant Method : Z:\SVOASRV\HPCHEM1\BNA_N\METHODS\SOM-EPA-BN061918.M
 Quant Title : SVOA CALIBRATION
 QLast Update : Tue Jun 19 14:50:02 2018
 Response via : Initial Calibration

Internal Standards	R.T.	QIon	Response	Conc	Units	Dev(Min)
1) 1,4-Dichlorobenzene-d4	7.71	152	604591	20.00	ng/ul	0.00
18) Naphthalene-d8	10.49	136	2728311	20.00	ng/ul	0.00
35) Acenaphthene-d10	14.35	164	1586330	20.00	ng/ul	0.00
61) Phenanthrene-d10	17.09	188	3192490	20.00	ng/ul	0.00
75) Chrysene-d12	21.29	240	2520513	20.00	ng/ul	0.00
83) Perylene-d12	23.52	264	2469050	20.00	ng/ul	0.00

System Monitoring Compounds

3) 1,4-Dioxane-d8	3.27	96	65549	4.71	ng/uL	0.00
5) Phenol-d5	6.89	99	110228	2.01	ng/ul	0.00
7) Bis-(2-Chloroethyl)ether-d	7.05	67	152068	4.50	ng/ul	0.00
9) 2-Chlorophenol-d4	7.25	132	200265	4.62	ng/ul	0.00
13) 4-Methylphenol-d8	8.41	113	159653	3.64	ng/ul	0.00
19) Nitrobenzene-d5	8.86	128	80427	3.97	ng/ul	0.00
22) 2-Nitrophenol-d4	9.58	143	87074	4.15	ng/ul	0.00
26) 2,4-Dichlorophenol-d3	10.11	165	207736	4.64	ng/ul	0.00
29) 4-Chloroaniline-d4	10.62	131	18294	0.39	ng/ul	0.00
43) Dimethylphthalate-d6	13.76	166	580349	4.33	ng/ul	0.00
46) Acenaphthylene-d8	14.03	160	597046	3.61	ng/ul	0.00
51) 4-Nitrophenol-d4	14.54	143	34882	1.41	ng/ul	0.00
57) Fluorene-d10	15.33	176	452561	3.85	ng/ul	0.00
62) 4,6-Dinitro-2-methylphenol	15.45	200	50308	2.89	ng/ul	0.00
70) Anthracene-d10	17.19	188	685886	4.45	ng/ul	0.00
76) Pyrene-d10	19.49	212	648703	5.11	ng/ul	0.00
87) Benzo(a)pyrene-d12	23.37	264	576742	4.30	ng/ul	-0.01

Target Compounds

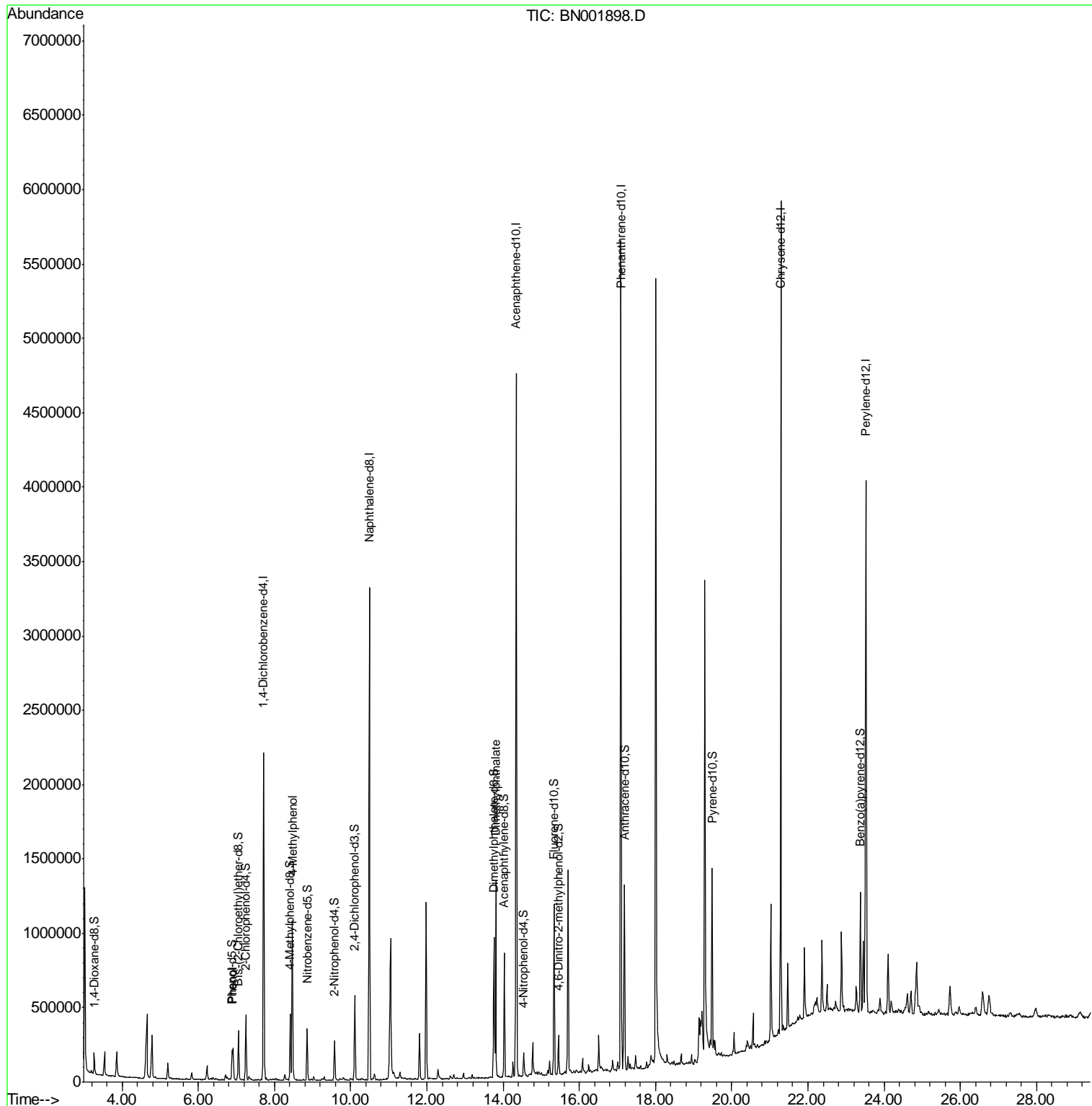
Target Compounds	R.T.	QIon	Response	Conc	Units	Ovalue
6) Phenol	6.91	94	107338	1.945	ng/ul	99
16) 4-Methylphenol	8.47	108	369877	8.043	ng/ul	97
44) Dimethylphthalate	13.80	163	833923	6.334	ng/ul	99

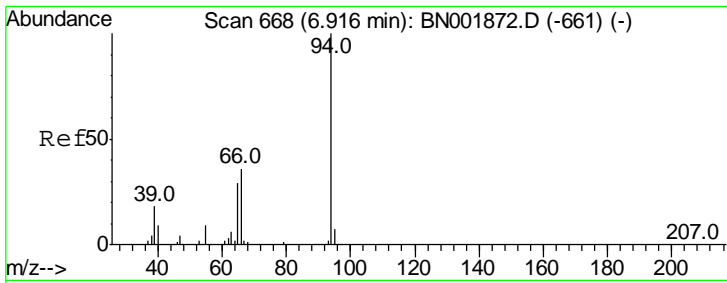
(#) = qualifier out of range (m) = manual integration (+) = signals summed

Data Path : Z:\SVOASRV\HPCHEM1\BNA N\DATA\BN062018\
 Data File : BN001898.D
 Acq On : 20 Jun 2018 22:05
 Operator : JU/SJ
 Sample : J3527-06
 Misc :
 ALS Vial : 21 Sample Multiplier: 1

Instrument :
 BNA_N
 ClientSampleId :

Quant Time: Jun 21 01:12:15 2018
 Quant Method : Z:\SVOASRV\HPCHEM1\BNA_N\METHODS\SOM-EPA-BN061918.M
 Quant Title : SVOA CALIBRATION
 QLast Update : Tue Jun 19 14:50:02 2018
 Response via : Initial Calibration

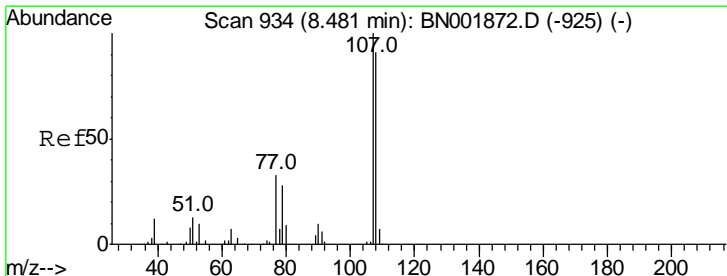
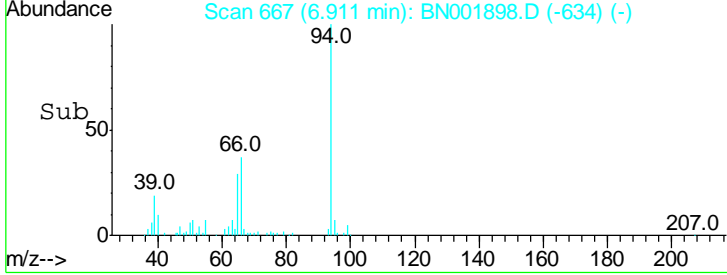
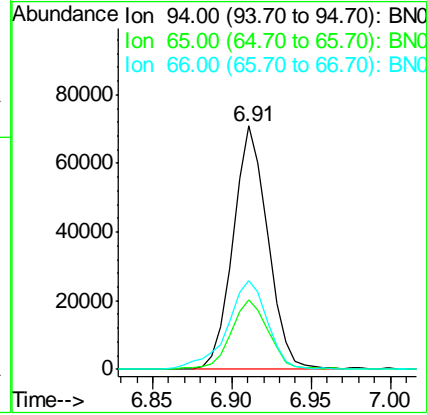
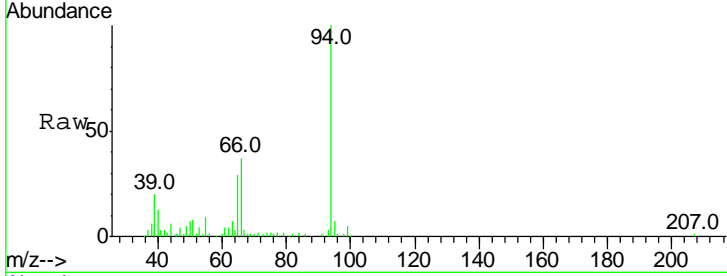




#6
 Phenol
 Concen: 1.945 ng/ul
 RT: 6.91 min Scan# 667
 Delta R.T. -0.01 min
 Lab File: BN001898.D
 Acq: 20 Jun 2018 22:05

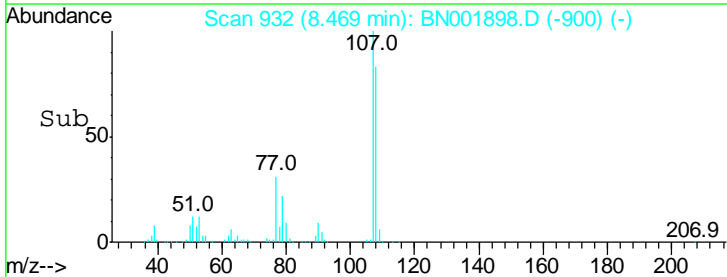
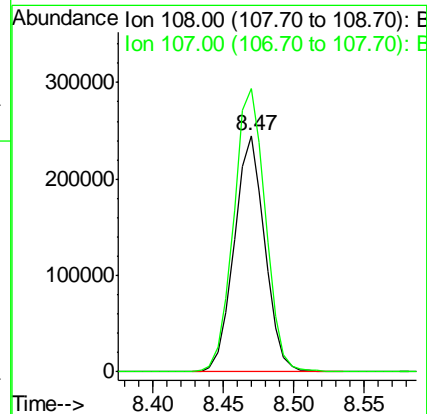
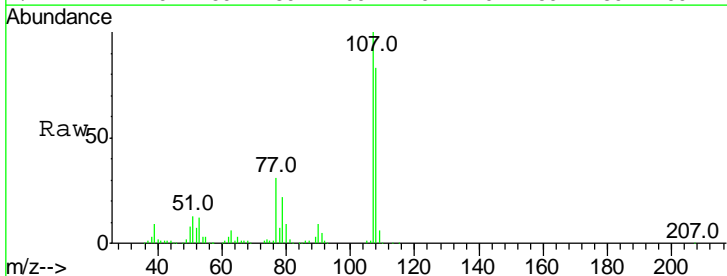
Instrument :
 BNA_N
 ClientSampled :

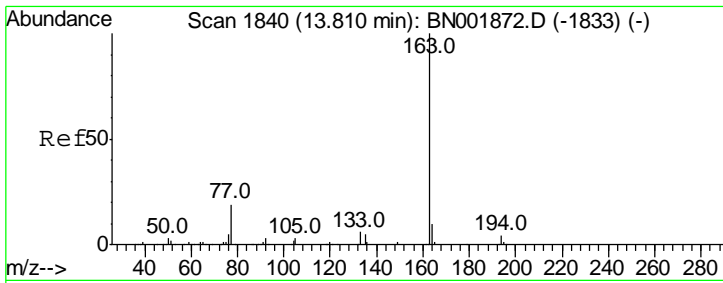
Tgt Ion	Resp	Lower	Upper
94	107338		
65	28.7	23.0	34.6
66	36.6	30.4	45.6



#16
 4-Methylphenol
 Concen: 8.043 ng/ul
 RT: 8.47 min Scan# 932
 Delta R.T. -0.01 min
 Lab File: BN001898.D
 Acq: 20 Jun 2018 22:05

Tgt Ion	Resp	Lower	Upper
108	369877		
107	119.9	93.6	140.4





#44
 Dimethylphthalate
 Concen: 6.334 ng/ul
 RT: 13.80 min Scan# 1839
 Delta R.T. -0.01 min
 Lab File: BN001898.D
 Acq: 20 Jun 2018 22:05

Instrument :
 BNA_N
 ClientSampled :

Tot Ion:163 Resp: 833923

Ion	Ratio	Lower	Upper
163	100		
194	4.4	4.0	6.0
164	10.1	8.4	12.6

