

Data Path : Z:\svoasrv\HPCHEM1\BNA_N\Data\BN062024\
 Data File : BN032101.D
 Acq On : 20 Jun 2024 18:00
 Operator : MA/JU
 Sample : P2710-01
 Misc :
 ALS Vial : 9 Sample Multiplier: 1

Instrument :
 BNA_N
 ClientSampleId :
 A4B20

Integration Parameters: LSCINT.P

Integrator: RTE
 Smoothing : OFF Filtering: 5
 Sampling : 1 Min Area: 0.1 % of largest Peak
 Start Thrs: 0.2 Max Peaks: 100
 Stop Thrs : 0 Peak Location: TOP

If leading or trailing edge < 100 prefer < Baseline drop else tangent >
 Peak separation: 5

Method : Z:\svoasrv\HPCHEM1\BNA_N\Methods\SFAM-EPA-BN052924.MA.M
 Title : SVOA CALIBRATION

Signal : TIC: BN032101.D\data.ms

peak #	R.T. min	first scan	max scan	last scan	PK TY	peak height	corr. area	corr. % max.	% of total
1	3.164	26	30	36	rVB	56094	74014	1.02%	0.072%
2	3.581	96	101	112	rBV2	52618	96468	1.32%	0.094%
3	3.670	112	116	122	rVV	65650	87913	1.21%	0.085%
4	4.093	184	188	194	rVV	29296	43454	0.60%	0.042%
5	4.375	230	236	240	rBV	25990	38558	0.53%	0.037%
6	4.422	240	244	251	rVV	44846	68284	0.94%	0.066%
7	4.775	298	304	311	rVB	142080	213258	2.92%	0.207%
8	4.875	316	321	329	rVB	32130	48569	0.67%	0.047%
9	6.816	640	651	664	rVB2	1205885	3189191	43.74%	3.099%
10	6.981	673	679	691	rVB	969086	1494988	20.50%	1.453%
11	7.169	701	711	720	rBV	1188002	1929898	26.47%	1.876%
12	7.252	721	725	735	rVB2	25419	50203	0.69%	0.049%
13	7.634	783	790	798	rBV	1176813	1946821	26.70%	1.892%
14	7.893	827	834	841	rBV3	16469	40099	0.55%	0.039%
15	8.346	900	911	925	rBV	1544193	2542690	34.87%	2.471%
16	8.463	925	931	938	rVB	73202	125046	1.71%	0.122%
17	8.793	979	987	997	rBV	1180497	1982432	27.19%	1.927%
18	9.357	1077	1083	1089	rBV	24355	40306	0.55%	0.039%
19	9.510	1101	1109	1122	rBV	992750	1661062	22.78%	1.614%
20	10.040	1192	1199	1220	rBV	1549159	2797928	38.37%	2.719%
21	10.416	1254	1263	1270	rBV	1945837	3258700	44.69%	3.167%
22	10.563	1280	1288	1302	rBV	1252924	2230382	30.59%	2.168%
23	11.163	1382	1390	1396	rBV	41778	91186	1.25%	0.089%
24	12.010	1525	1534	1540	rVV2	32892	60768	0.83%	0.059%
25	12.146	1551	1557	1577	rVV	246173	507925	6.97%	0.494%
26	13.175	1726	1732	1737	rBV	36667	64441	0.88%	0.063%
27	13.598	1799	1804	1809	rBV3	22647	39136	0.54%	0.038%
28	13.698	1815	1821	1835	rVV	3095007	4396113	60.29%	4.272%
29	13.975	1856	1868	1880	rBV	3571179	5408142	74.17%	5.256%
30	14.281	1911	1920	1926	rBV	3171344	4750136	65.14%	4.616%
31	14.345	1926	1931	1937	rVV	78929	127016	1.74%	0.123%
32	14.404	1937	1941	1950	rVB2	35278	58138	0.80%	0.057%
33	14.504	1950	1958	1970	rBV	1059957	1838897	25.22%	1.787%
34	14.598	1971	1974	1979	rVV4	24517	40155	0.55%	0.039%
35	14.681	1979	1988	1991	rVV2	64453	134054	1.84%	0.130%
36	14.710	1991	1993	1998	rVV4	44209	62266	0.85%	0.061%

Data Path : Z:\svoasrv\HPCHEM1\BNA_N\Data\BN062024\
 Data File : BN032101.D
 Acq On : 20 Jun 2024 18:00
 Operator : MA/JU
 Sample : P2710-01
 Misc :
 ALS Vial : 9 Sample Multiplier: 1

Instrument :
 BNA_N
 ClientSampleId :
 A4B20

Integration Parameters: LSCINT.P

Integrator: RTE
 Smoothing : OFF Filtering: 5
 Sampling : 1 Min Area: 0.1 % of largest Peak
 Start Thrs: 0.2 Max Peaks: 100
 Stop Thrs : 0 Peak Location: TOP

If leading or trailing edge < 100 prefer < Baseline drop else tangent >
 Peak separation: 5

Method : Z:\svoasrv\HPCHEM1\BNA_N\Methods\SFAM-EPA-BN052924.MA.M
 Title : SVOA CALIBRATION

37	15.075	2047	2055	2060	rBV5	21629	53046	0.73%	0.052%
38	15.275	2082	2089	2096	rVV	4304493	6563502	90.01%	6.379%
39	15.334	2096	2099	2106	rVB	84433	121153	1.66%	0.118%
40	15.410	2106	2112	2123	rBV	1250961	1819914	24.96%	1.769%
41	15.539	2124	2134	2139	rVB3	78779	157366	2.16%	0.153%
42	15.628	2144	2149	2155	rVB	40071	68191	0.94%	0.066%
43	15.775	2170	2174	2181	rVV	39894	77277	1.06%	0.075%
44	16.004	2206	2213	2220	rVB9	36411	85778	1.18%	0.083%
45	16.263	2253	2257	2261	rBV2	31447	45024	0.62%	0.044%
46	16.339	2261	2270	2275	rVV6	29151	74847	1.03%	0.073%
47	16.439	2283	2287	2292	rBV8	18967	37686	0.52%	0.037%
48	16.563	2300	2308	2312	rBV3	44581	86447	1.19%	0.084%
49	16.686	2325	2329	2336	rVB	77656	123985	1.70%	0.120%
50	16.763	2337	2342	2343	rBV	29492	42936	0.59%	0.042%
51	16.786	2344	2346	2349	rVV3	36232	45941	0.63%	0.045%
52	16.845	2352	2356	2364	rVB	77687	127842	1.75%	0.124%
53	17.034	2381	2388	2392	rBV	3635702	5632463	77.24%	5.474%
54	17.075	2392	2395	2399	rVV	1415103	1902694	26.09%	1.849%
55	17.128	2399	2404	2415	rVV	4495653	6795545	93.19%	6.604%
56	17.216	2415	2419	2426	rVB4	30380	71944	0.99%	0.070%
57	17.439	2449	2457	2469	rBV2	112194	246091	3.37%	0.239%
58	17.551	2473	2476	2482	rVV4	40622	65863	0.90%	0.064%
59	17.616	2483	2487	2495	rVB5	37788	80437	1.10%	0.078%
60	17.704	2495	2502	2506	rBV3	47921	91001	1.25%	0.088%
61	17.745	2506	2509	2515	rVB4	27892	48544	0.67%	0.047%
62	17.904	2531	2536	2537	rBV	182284	207871	2.85%	0.202%
63	17.933	2537	2541	2550	rVB2	1040098	1761569	24.16%	1.712%
64	18.033	2555	2558	2563	rVV	91309	139227	1.91%	0.135%
65	18.098	2563	2569	2573	rVV2	284505	509857	6.99%	0.495%
66	18.133	2573	2575	2584	rVB	122775	180345	2.47%	0.175%
67	18.263	2594	2597	2601	rVB4	36613	46931	0.64%	0.046%
68	18.410	2618	2622	2626	rBV	164686	227867	3.12%	0.221%
69	18.457	2626	2630	2635	rVB	167733	217390	2.98%	0.211%
70	18.657	2660	2664	2668	rVB3	53791	71329	0.98%	0.069%
71	18.704	2670	2672	2675	rVV	41520	49435	0.68%	0.048%
72	18.745	2676	2679	2683	rVB3	53657	69196	0.95%	0.067%
73	18.828	2689	2693	2697	rBV2	97100	189108	2.59%	0.184%
74	18.980	2713	2719	2724	rBV3	133509	331182	4.54%	0.322%
75	19.092	2730	2738	2745	rBV	2701580	3759739	51.56%	3.654%
76	19.222	2753	2760	2768	rBV3	461639	853113	11.70%	0.829%

Data Path : Z:\svoasrv\HPCHEM1\BNA_N\Data\BN062024\
 Data File : BN032101.D
 Acq On : 20 Jun 2024 18:00
 Operator : MA/JU
 Sample : P2710-01
 Misc :
 ALS Vial : 9 Sample Multiplier: 1

Instrument :
 BNA_N
 ClientSampleId :
 A4B20

Integration Parameters: LSCINT.P

Integrator: RTE
 Smoothing : OFF Filtering: 5
 Sampling : 1 Min Area: 0.1 % of largest Peak
 Start Thrs: 0.2 Max Peaks: 100
 Stop Thrs : 0 Peak Location: TOP

If leading or trailing edge < 100 prefer < Baseline drop else tangent >
 Peak separation: 5

Method : Z:\svoasrv\HPCHEM1\BNA_N\Methods\SFAM-EPA-BN052924.MA.M
 Title : SVOA CALIBRATION

77	19.433	2790	2796	2799	rBV	4819762	7291970	100.00%	7.087%
78	19.533	2809	2813	2819	rVB2	124216	188563	2.59%	0.183%
79	19.639	2828	2831	2836	rVB	112301	152609	2.09%	0.148%
80	19.786	2851	2856	2864	rBV2	139478	330437	4.53%	0.321%
81	19.922	2874	2879	2880	rBV3	112213	158480	2.17%	0.154%
82	19.957	2882	2885	2888	rVV	181794	238692	3.27%	0.232%
83	20.057	2899	2902	2906	rBV	144146	172286	2.36%	0.167%
84	20.110	2907	2911	2916	rVV2	179067	299960	4.11%	0.292%
85	20.151	2916	2918	2922	rVB2	64856	75732	1.04%	0.074%
86	20.257	2933	2936	2939	rBV	79934	86106	1.18%	0.084%
87	20.304	2941	2944	2948	rVB2	88872	125829	1.73%	0.122%
88	20.475	2970	2973	2977	rBV	151001	167931	2.30%	0.163%
89	20.710	3009	3013	3018	rBV	186662	251432	3.45%	0.244%
90	20.874	3038	3041	3045	rVB2	145613	187575	2.57%	0.182%
91	20.916	3045	3048	3050	rBV	150916	164424	2.25%	0.160%
92	20.951	3050	3054	3062	rVB2	1071606	1623516	22.26%	1.578%
93	21.263	3100	3107	3112	rBV3	3282761	6025108	82.63%	5.855%
94	21.304	3112	3114	3126	rVB	861569	1232588	16.90%	1.198%
95	21.410	3129	3132	3135	rVV	144670	191759	2.63%	0.186%
96	21.451	3136	3139	3145	rVB2	208842	293860	4.03%	0.286%
97	21.998	3228	3232	3235	rBV2	365812	592419	8.12%	0.576%
98	23.257	3440	3446	3452	rBV	469678	1260933	17.29%	1.225%
99	23.974	3561	3568	3575	rBV2	1238613	2989657	41.00%	2.905%
100	24.174	3594	3602	3615	rBV	1679694	4178745	57.31%	4.061%

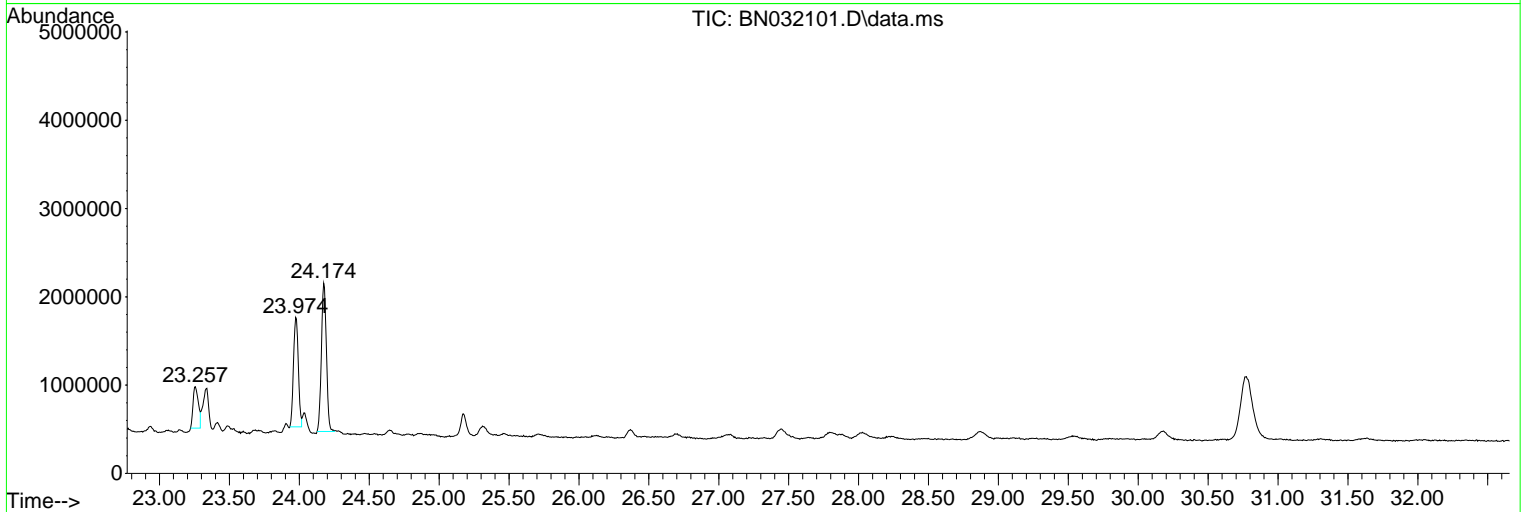
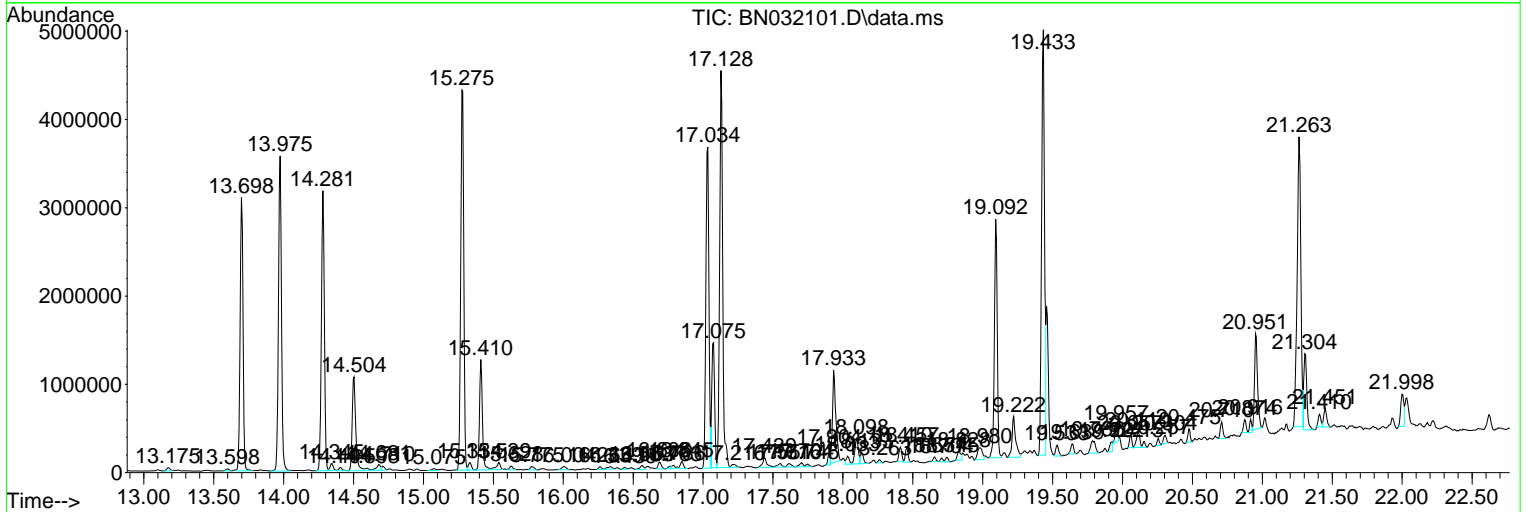
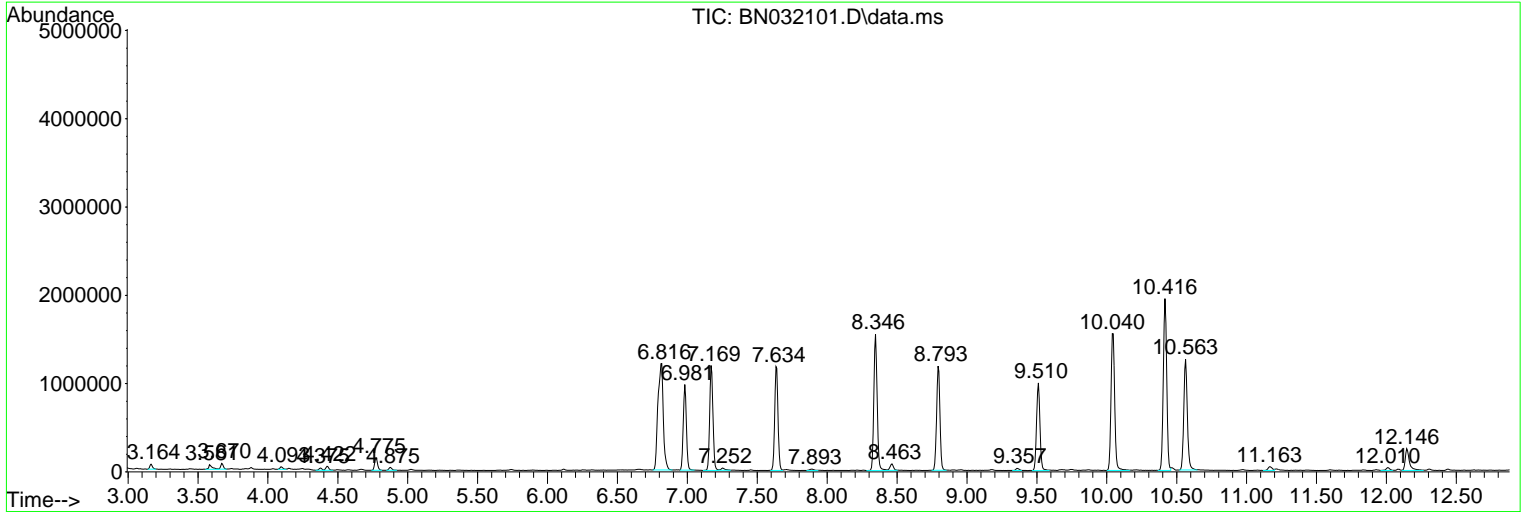
Sum of corrected areas: 102898924

Data Path : Z:\svoasrv\HPCHEM1\BNA_N\Data\BN062024\
 Data File : BN032101.D
 Acq On : 20 Jun 2024 18:00
 Operator : MA/JU
 Sample : P2710-01
 Misc :
 ALS Vial : 9 Sample Multiplier: 1

Instrument :
 BNA_N
 ClientSampleId :
 A4B20

Quant Method : Z:\svoasrv\HPCHEM1\BNA_N\Methods\SFAM-EPA-BN052924.MA.M
 Quant Title : SVOA CALIBRATION

TIC Library : C:\Database\NIST20.L
 TIC Integration Parameters: LSCINT.P



Data Path : Z:\svoasrv\HPCHEM1\BNA_N\Data\BN062024\
 Data File : BN032101.D
 Acq On : 20 Jun 2024 18:00
 Operator : MA/JU
 Sample : P2710-01
 Misc :
 ALS Vial : 9 Sample Multiplier: 1

Instrument :
 BNA_N
 ClientSampleId :
 A4B20

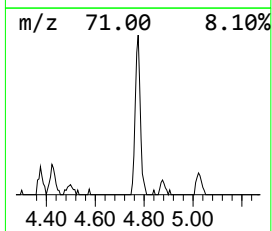
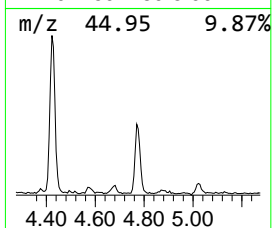
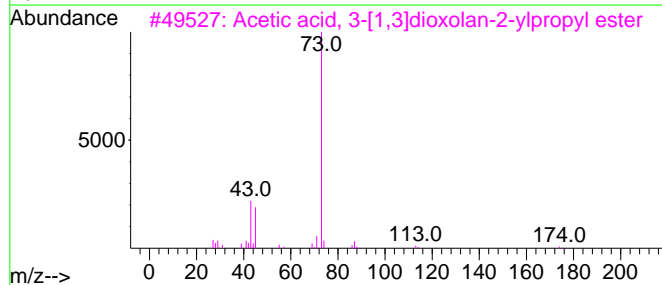
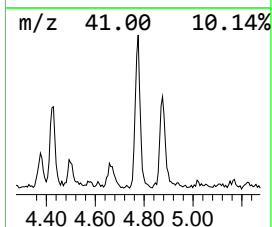
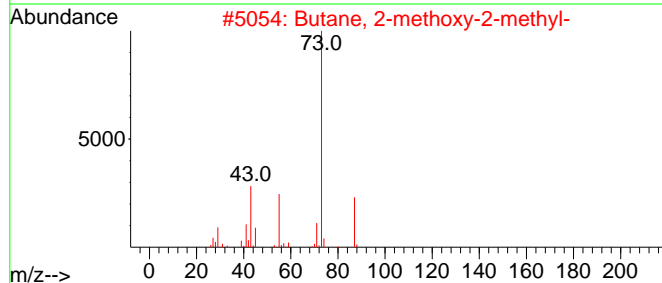
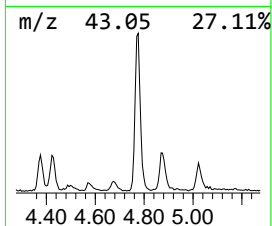
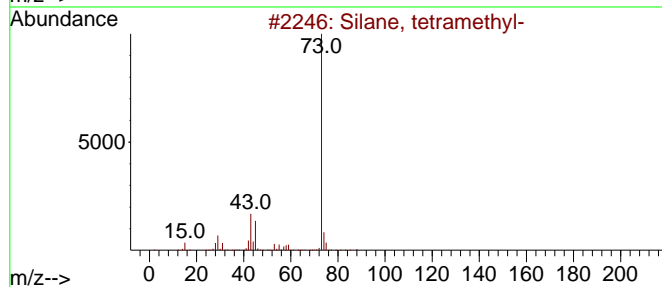
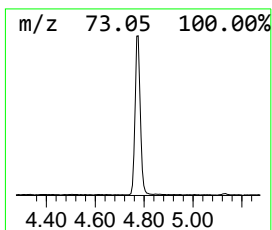
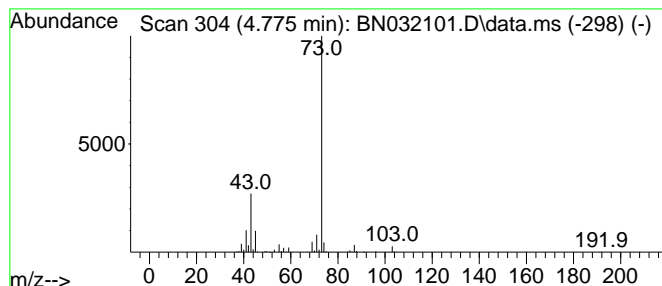
Quant Method : Z:\svoasrv\HPCHEM1\BNA_N\Methods\SFAM-EPA-BN052924.MA.M
 Quant Title : SVOA CALIBRATION

TIC Library : C:\Database\NIST20.L
 TIC Integration Parameters: LSCINT.P

 Peak Number 1 unknown-01 Concentration Rank 5

R.T.	EstConc	Area	Relative to ISTD	R.T.
4.775	2.19 ng/ul	213258	1,4-Dichlorobenzene-d4	7.640

Hit#	of	Tentative ID	MW	MolForm	CAS#	Qual
1	5	Silane, tetramethyl-	88	C4H12Si	000075-76-3	40
2		Butane, 2-methoxy-2-methyl-	102	C6H14O	000994-05-8	38
3		Acetic acid, 3-[1,3]dioxolan-2-y...	174	C8H14O4	1000186-02-3	36
4		3-Pentanol, 2,4-dimethyl-	116	C7H16O	000600-36-2	33
5		Pentane, 3-methoxy-	102	C6H14O	036839-67-5	25



Data Path : Z:\svoasrv\HPCHEM1\BNA_N\Data\BN062024\
 Data File : BN032101.D
 Acq On : 20 Jun 2024 18:00
 Operator : MA/JU
 Sample : P2710-01
 Misc :
 ALS Vial : 9 Sample Multiplier: 1

Instrument :
 BNA_N
 ClientSampleId :
 A4B20

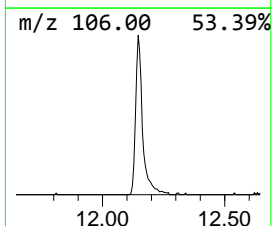
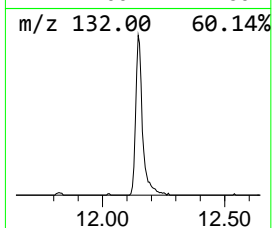
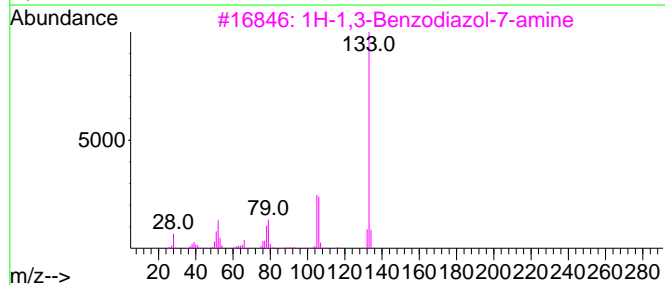
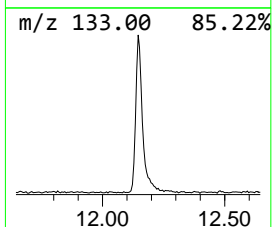
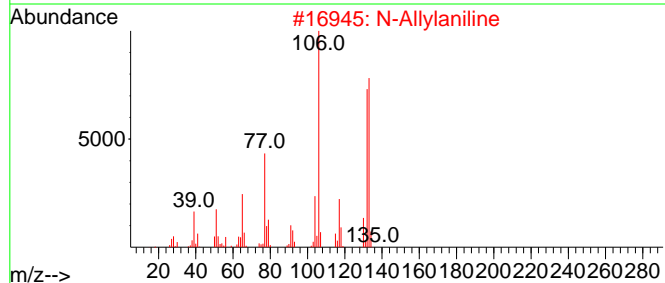
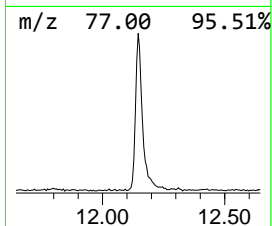
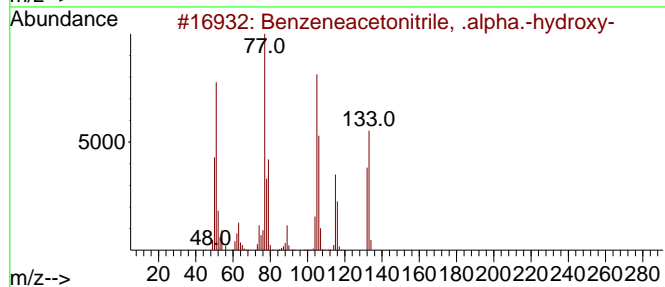
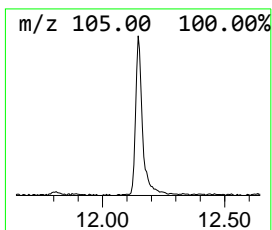
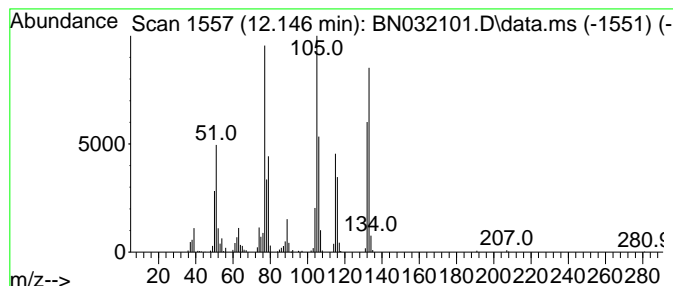
Quant Method : Z:\svoasrv\HPCHEM1\BNA_N\Methods\SFAM-EPA-BN052924.MA.M
 Quant Title : SVOA CALIBRATION

TIC Library : C:\Database\NIST20.L
 TIC Integration Parameters: LSCINT.P

 Peak Number 2 Benzeneacetonitrile, .alpha... Concentration Rank 3

R.T.	EstConc	Area	Relative to ISTD	R.T.
12.146	3.12 ng/ul	507925	Naphthalene-d8	10.416

Hit#	of 5	Tentative ID	MW	MolForm	CAS#	Qual
1		Benzeneacetonitrile, .alpha.-hyd...	133	C8H7NO	000532-28-5	97
2		N-Allylaniline	133	C9H11N	000589-09-3	43
3		1H-1,3-Benzodiazol-7-amine	133	C7H7N3	004331-29-7	42
4		1H-Benzimidazol-2-amine	133	C7H7N3	000934-32-7	38
5		1H-Benzimidazol-5-amine	133	C7H7N3	000934-22-5	38



Data Path : Z:\svoasrv\HPCHEM1\BNA_N\Data\BN062024\
 Data File : BN032101.D
 Acq On : 20 Jun 2024 18:00
 Operator : MA/JU
 Sample : P2710-01
 Misc :
 ALS Vial : 9 Sample Multiplier: 1

Instrument :
 BNA_N
 ClientSampleId :
 A4B20

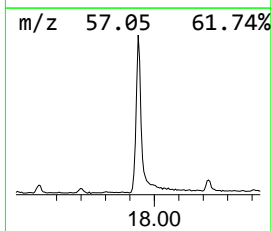
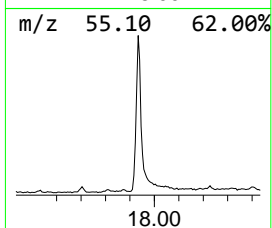
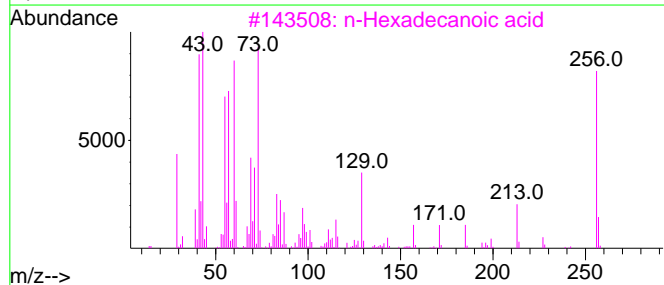
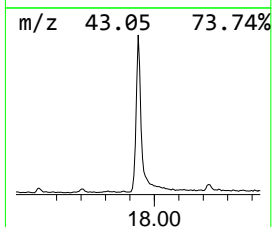
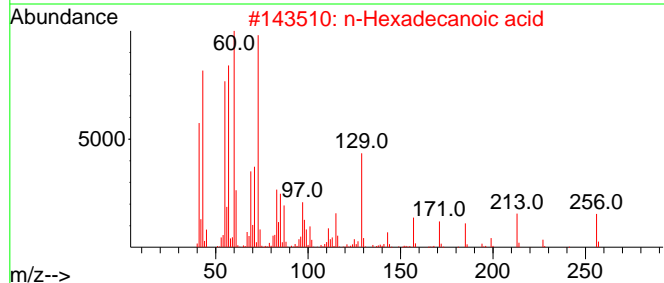
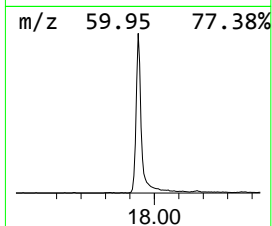
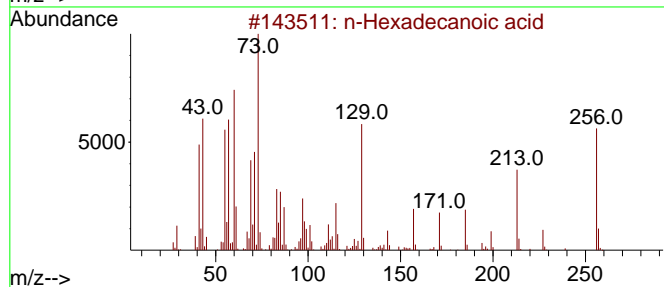
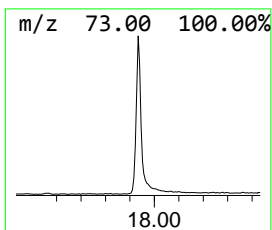
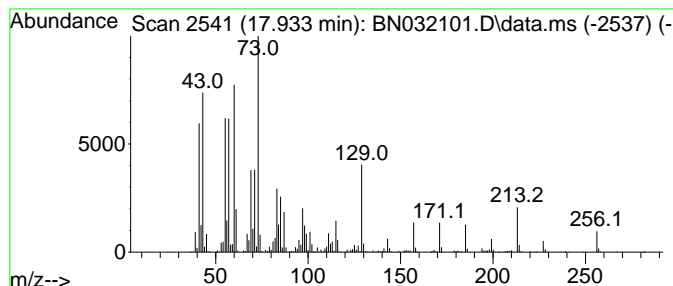
Quant Method : Z:\svoasrv\HPCHEM1\BNA_N\Methods\SFAM-EPA-BN052924.MA.M
 Quant Title : SVOA CALIBRATION

TIC Library : C:\Database\NIST20.L
 TIC Integration Parameters: LSCINT.P

 Peak Number 3 n-Hexadecanoic acid Concentration Rank 1

R.T.	EstConc	Area	Relative to ISTD	R.T.
17.933	6.26 ng/ul	1761570	Phenanthrene-d10	17.034

Hit#	of	5	Tentative ID	MW	MolForm	CAS#	Qual
1			n-Hexadecanoic acid	256	C16H32O2	000057-10-3	99
2			n-Hexadecanoic acid	256	C16H32O2	000057-10-3	99
3			n-Hexadecanoic acid	256	C16H32O2	000057-10-3	99
4			n-Hexadecanoic acid	256	C16H32O2	000057-10-3	98
5			Tetradecanoic acid	228	C14H28O2	000544-63-8	95



Data Path : Z:\svoasrv\HPCHEM1\BNA_N\Data\BN062024\
 Data File : BN032101.D
 Acq On : 20 Jun 2024 18:00
 Operator : MA/JU
 Sample : P2710-01
 Misc :
 ALS Vial : 9 Sample Multiplier: 1

Instrument :
 BNA_N
 ClientSampleId :
 A4B20

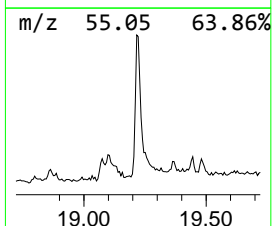
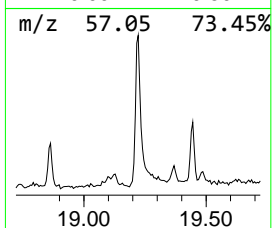
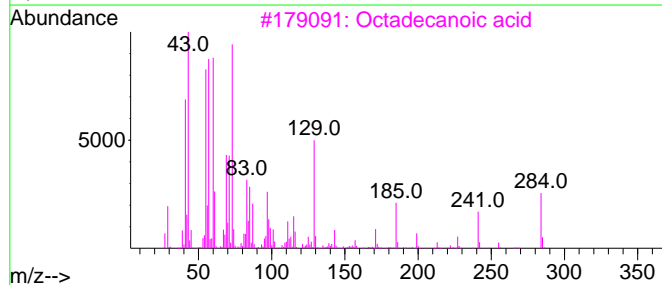
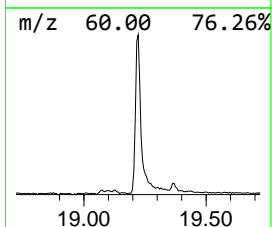
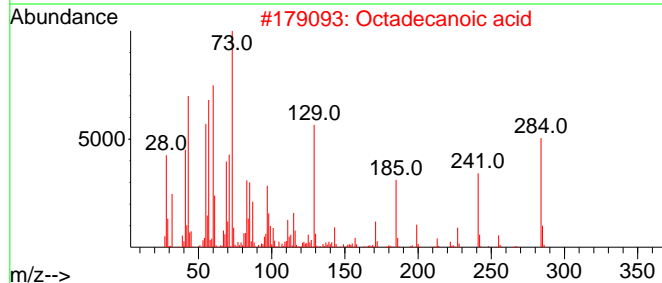
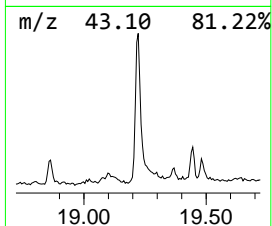
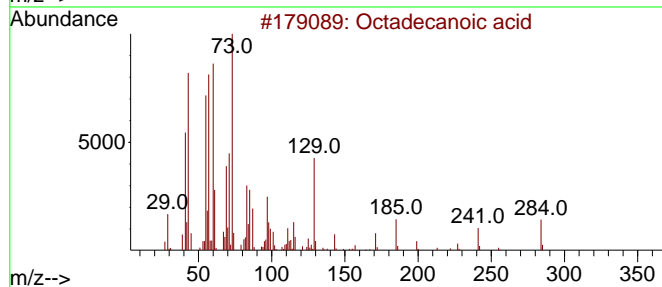
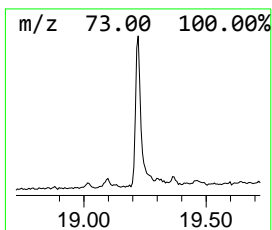
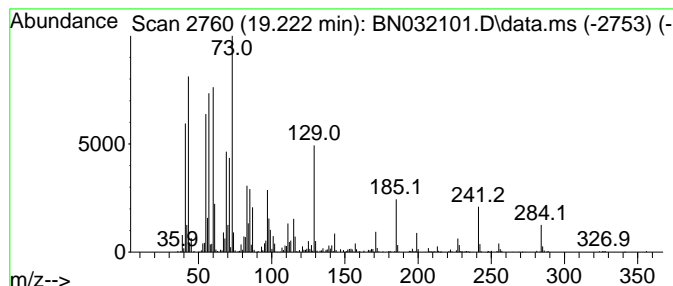
Quant Method : Z:\svoasrv\HPCHEM1\BNA_N\Methods\SFAM-EPA-BN052924.MA.M
 Quant Title : SVOA CALIBRATION

TIC Library : C:\Database\NIST20.L
 TIC Integration Parameters: LSCINT.P

 Peak Number 4 Octadecanoic acid Concentration Rank 4

R.T.	EstConc	Area	Relative to ISTD	R.T.
19.222	2.83 ng/ul	853113	Chrysene-d12	21.263

Hit#	of	5	Tentative ID	MW	MolForm	CAS#	Qual
1			Octadecanoic acid	284	C18H36O2	000057-11-4	99
2			Octadecanoic acid	284	C18H36O2	000057-11-4	99
3			Octadecanoic acid	284	C18H36O2	000057-11-4	99
4			Octadecanoic acid	284	C18H36O2	000057-11-4	94
5			n-Hexadecanoic acid	256	C16H32O2	000057-10-3	93



Data Path : Z:\svoasrv\HPCHEM1\BNA_N\Data\BN062024\
 Data File : BN032101.D
 Acq On : 20 Jun 2024 18:00
 Operator : MA/JU
 Sample : P2710-01
 Misc :
 ALS Vial : 9 Sample Multiplier: 1

Instrument :
 BNA_N
 ClientSampleId :
 A4B20

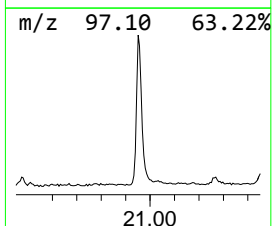
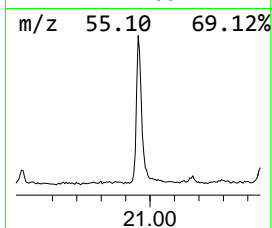
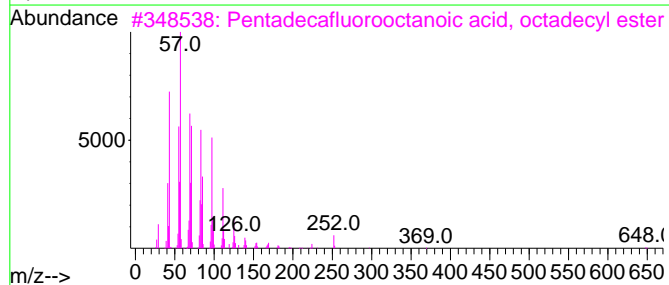
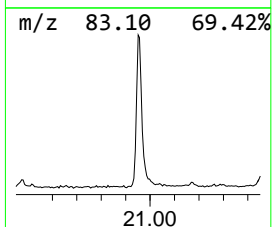
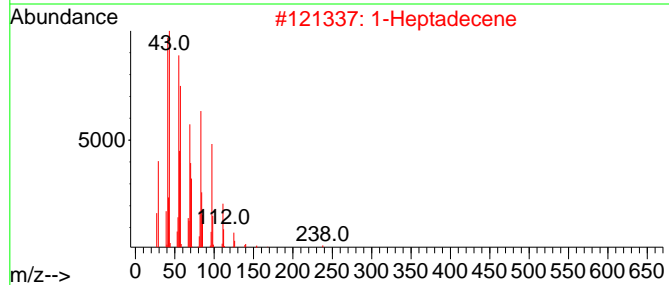
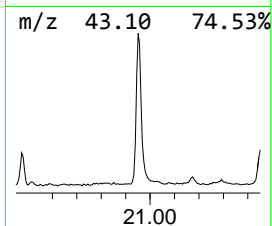
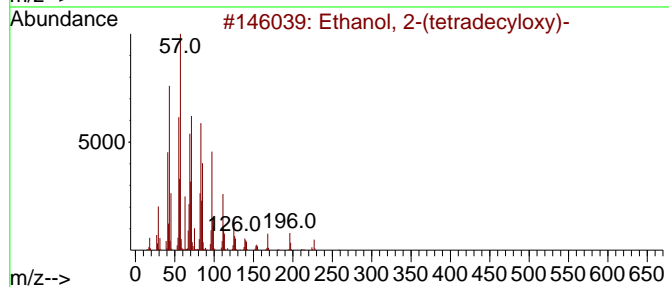
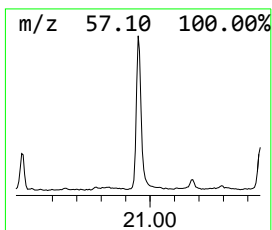
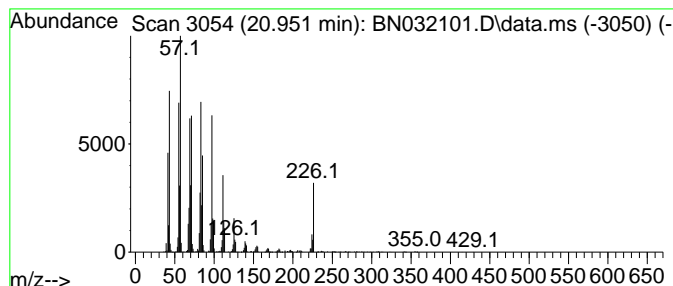
Quant Method : Z:\svoasrv\HPCHEM1\BNA_N\Methods\SFAM-EPA-BN052924.MA.M
 Quant Title : SVOA CALIBRATION

TIC Library : C:\Database\NIST20.L
 TIC Integration Parameters: LSCINT.P

 Peak Number 5 Ethanol, 2-(tetradecyloxy)- Concentration Rank 2

R.T.	EstConc	Area	Relative to ISTD	R.T.
20.951	5.39 ng/ul	1623520	Chrysene-d12	21.263

Hit#	of	5	Tentative ID	MW	MolForm	CAS#	Qual
1			Ethanol, 2-(tetradecyloxy)-	258	C16H34O2	002136-70-1	95
2			1-Heptadecene	238	C17H34	006765-39-5	93
3			Pentadecafluorooctanoic acid, oc...	666	C26H37F15O2	1000406-04-8	93
4			1-Octadecene	252	C18H36	000112-88-9	93
5			1-Octadecene	252	C18H36	000112-88-9	91



Data Path : Z:\svoasrv\HPCHEM1\BNA_N\Data\BN062024\
Data File : BN032101.D
Acq On : 20 Jun 2024 18:00
Operator : MA/JU
Sample : P2710-01
Misc :
ALS Vial : 9 Sample Multiplier: 1

Instrument :
BNA_N
ClientSampleId :
A4B20

Quant Method : Z:\svoasrv\HPCHEM1\BNA_N\Methods\SFAM-EPA-BN052924.MA.M
Quant Title : SVOA CALIBRATION

TIC Library : C:\Database\NIST20.L
TIC Integration Parameters: LSCINT.P

TIC Top Hit name	RT	EstConc	Units	Response	--Internal Standard--			
					#	RT	Resp	Conc
unknown-01	4.775	2.2	ng/ul	213258	1	7.640	1946820	20.0
Benzeneacetone...	12.146	3.1	ng/ul	507925	2	10.416	3258700	20.0
n-Hexadecanoic ...	17.933	6.3	ng/ul	1761570	4	17.034	5632460	20.0
Octadecanoic acid	19.222	2.8	ng/ul	853113	5	21.263	6025110	20.0
Ethanol, 2-(tet...	20.951	5.4	ng/ul	1623520	5	21.263	6025110	20.0