

Data Path : Z:\svoasrv\HPCHEM1\BNA\_N\Data\BN062024\  
 Data File : BN032116.D  
 Acq On : 21 Jun 2024 04:30  
 Operator : MA/JU  
 Sample : P2894-05  
 Misc :  
 ALS Vial : 25 Sample Multiplier: 1

Instrument :  
 BNA\_N  
 ClientSampleId :  
 SVOC-GPC-BLANK

Integration Parameters: LSCINT.P

Integrator: RTE  
 Smoothing : OFF Filtering: 5  
 Sampling : 1 Min Area: 0.1 % of largest Peak  
 Start Thrs: 0.2 Max Peaks: 100  
 Stop Thrs : 0 Peak Location: TOP

If leading or trailing edge < 100 prefer < Baseline drop else tangent >  
 Peak separation: 5

Method : Z:\svoasrv\HPCHEM1\BNA\_N\Methods\SFAM-EPA-BN052924.MA.M  
 Title : SVOA CALIBRATION

Signal : TIC: BN032116.D\data.ms

peak #	R.T. min	first scan	max scan	last scan	PK TY	peak height	corr. area	corr. % max.	% of total
1	3.875	147	151	157	rVB2	12239	18054	0.34%	0.075%
2	7.634	782	790	809	rBV	1099579	1839784	34.27%	7.648%
3	10.416	1255	1263	1282	rBV	1680481	3020265	56.26%	12.556%
4	10.545	1283	1285	1289	rVB4	5397	6104	0.11%	0.025%
5	14.281	1912	1920	1937	rBV	2909340	4489050	83.62%	18.662%
6	16.816	2347	2351	2357	rVB2	8452	12939	0.24%	0.054%
7	17.027	2380	2387	2402	rBV	3620203	5368098	100.00%	22.316%
8	19.363	2781	2784	2789	rBV4	28286	37393	0.70%	0.155%
9	21.263	3101	3107	3120	rBV	3363722	4887085	91.04%	20.316%
10	24.168	3593	3601	3617	rVB	1692280	4376004	81.52%	18.192%

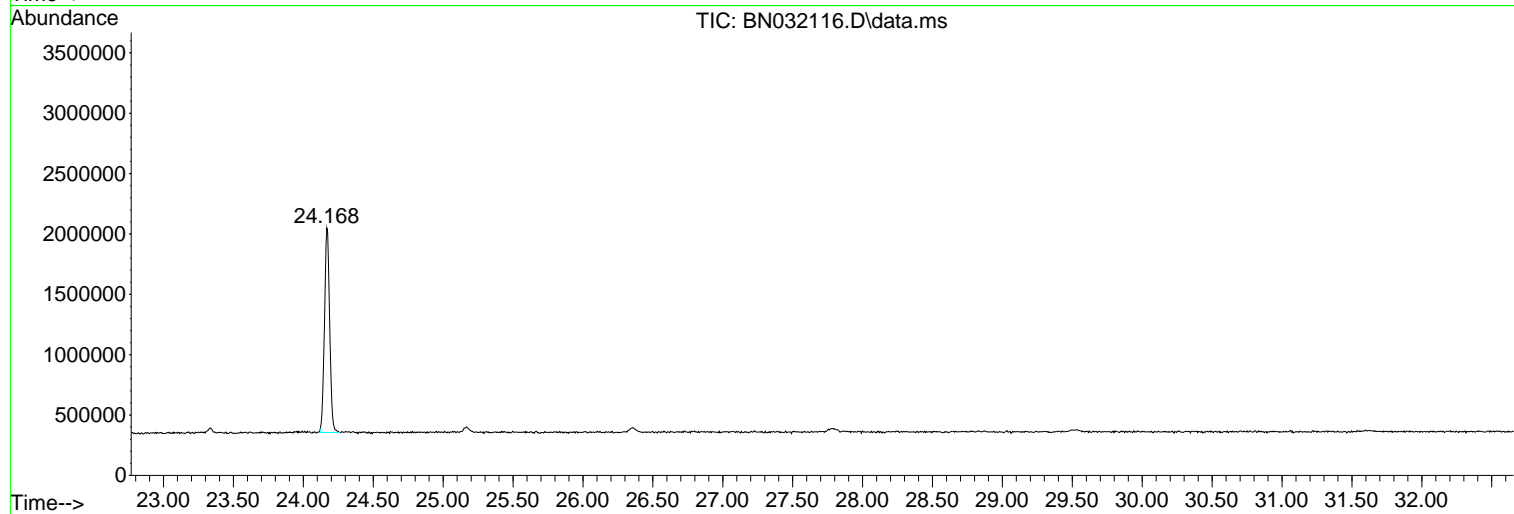
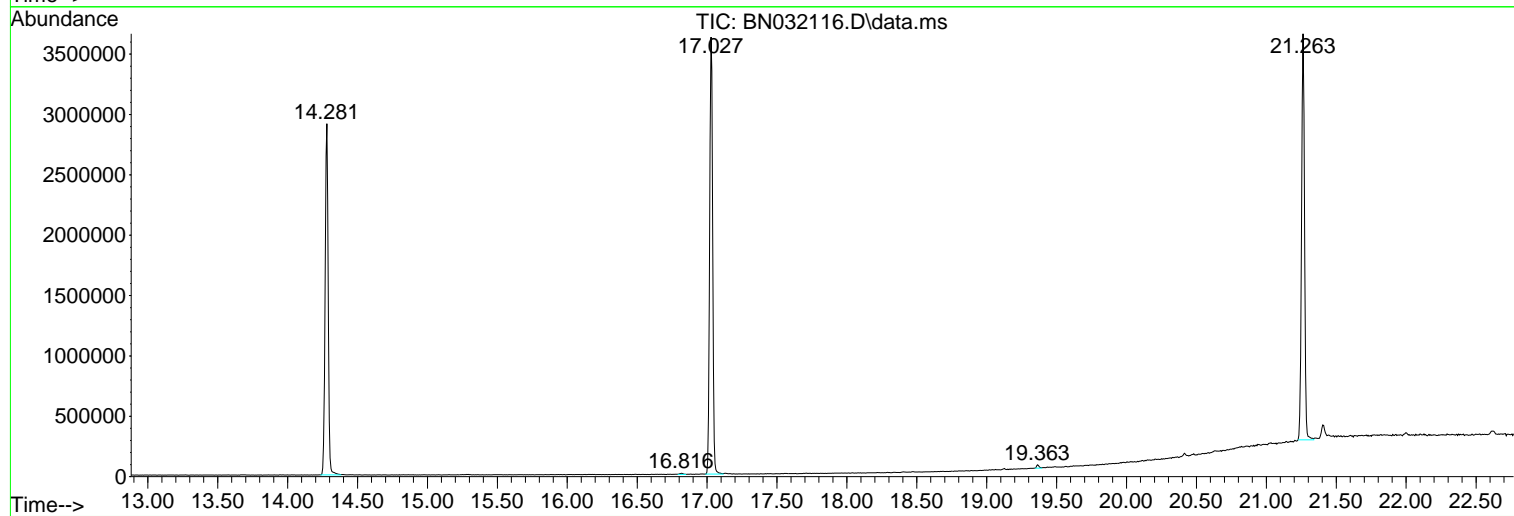
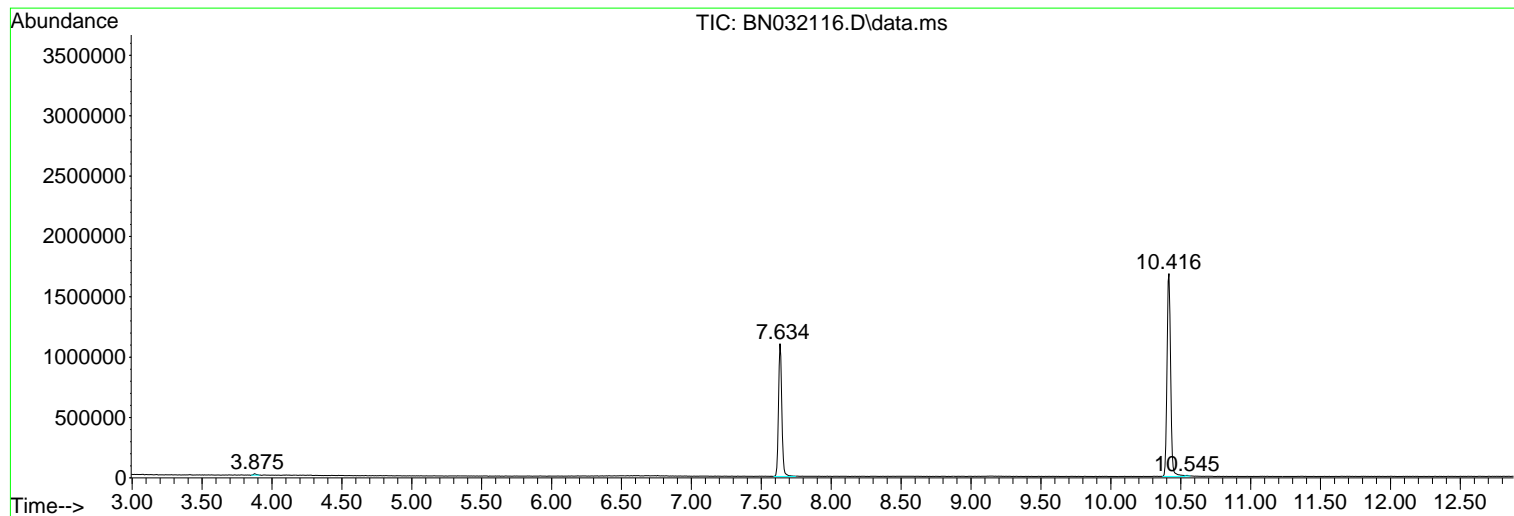
Sum of corrected areas: 24054776

Data Path : Z:\svoasrv\HPCHEM1\BNA\_N\Data\BN062024\  
Data File : BN032116.D  
Acq On : 21 Jun 2024 04:30  
Operator : MA/JU  
Sample : P2894-05  
Misc :  
ALS Vial : 25 Sample Multiplier: 1

Instrument :  
BNA\_N  
ClientSampleId :  
SVOC-GPC-BLANK

Quant Method : Z:\svoasrv\HPCHEM1\BNA\_N\Methods\SFAM-EPA-BN052924.MA.M  
Quant Title : SVOA CALIBRATION

TIC Library : C:\Database\NIST20.L  
TIC Integration Parameters: LSCINT.P



Library Search Compound Report

Data Path : Z:\svoasrv\HPCHEM1\BNA\_N\Data\BN062024\  
Data File : BN032116.D  
Acq On : 21 Jun 2024 04:30  
Operator : MA/JU  
Sample : P2894-05  
Misc :  
ALS Vial : 25 Sample Multiplier: 1

**Instrument :**  
BNA\_N  
**ClientSampleId :**  
SVOC-GPC-BLANK

Quant Method : Z:\svoasrv\HPCHEM1\BNA\_N\Methods\SFAM-EPA-BN052924.MA.M  
Quant Title : SVOA CALIBRATION

TIC Library : C:\Database\NIST20.L  
TIC Integration Parameters: LSCINT.P

No Library Search Compounds Detected

\*\*\*\*\*

Data Path : Z:\svoasrv\HPCHEM1\BNA\_N\Data\BN062024\  
Data File : BN032116.D  
Acq On : 21 Jun 2024 04:30  
Operator : MA/JU  
Sample : P2894-05  
Misc :  
ALS Vial : 25 Sample Multiplier: 1

Instrument :  
BNA\_N  
ClientSampleId :  
SVOC-GPC-BLANK

Quant Method : Z:\svoasrv\HPCHEM1\BNA\_N\Methods\SFAM-EPA-BN052924.MA.M  
Quant Title : SVOA CALIBRATION

TIC Library : C:\Database\NIST0.L  
TIC Integration Parameters: LSCINT.P

TIC Top Hit name	RT	EstConc	Units	Response	#	RT	Resp	Conc
------------------	----	---------	-------	----------	---	----	------	------

---