

Data Path : Z:\SVOASRV\HPCHEM1\BNA\_N\DATA\BN062219\  
 Data File : BN006491.D  
 Acq On : 22 Jun 2019 16:22  
 Operator : HP/JU  
 Sample : K3362-02  
 Misc :  
 ALS Vial : 9 Sample Multiplier: 1

Instrument :  
 BNA\_N  
 ClientSampleId :  
 A41Z5

Quant Time: Jun 24 04:05:52 2019  
 Quant Method : Z:\SVOASRV\HPCHEM1\BNA\_N\METHODS\SOM-EPA-BN061919MA.M  
 Quant Title : SVOA CALIBRATION  
 QLast Update : Fri Jun 21 22:42:34 2019  
 Response via : Initial Calibration

Internal Standards	R.T.	QIon	Response	Conc	Units	Dev(Min)
1) 1,4-Dichlorobenzene-d4	7.62	152	352029	20.00	ng/ul	0.00
18) Naphthalene-d8	10.40	136	1584988	20.00	ng/ul	0.00
35) Acenaphthene-d10	14.28	164	933503	20.00	ng/ul	0.00
61) Phenanthrene-d10	17.04	188	1960066	20.00	ng/ul	0.00
77) Chrysene-d12	21.26	240	1407609	20.00	ng/ul	0.00
85) Perylene-d12	23.50	264	1357814	20.00	ng/ul	0.00

## System Monitoring Compounds

3) 1,4-Dioxane-d8	3.13	96	65522	7.27	ng/uL	0.00
5) Phenol-d5	6.80	99	1477785	39.43	ng/ul	0.00
7) Bis-(2-Chloroethyl)ether-d	6.96	67	945603	40.75	ng/ul	0.00
9) 2-Chlorophenol-d4	7.16	132	1106762	40.04	ng/ul	0.00
13) 4-Methylphenol-d8	8.33	113	1178602	39.64	ng/ul	0.00
19) Nitrobenzene-d5	8.78	128	582094	45.86	ng/ul	0.00
22) 2-Nitrophenol-d4	9.50	143	659584	47.70	ng/ul	0.00
26) 2,4-Dichlorophenol-d3	10.03	165	1115661	42.00	ng/ul	0.00
29) 4-Chloroaniline-d4	10.55	131	1374821	45.00	ng/ul	0.00
43) Dimethylphthalate-d6	13.70	166	3614289	44.18	ng/ul	0.00
46) Acenaphthylene-d8	13.97	160	4185409	41.74	ng/ul	0.00
51) 4-Nitrophenol-d4	14.51	143	566058	40.50	ng/ul	0.00
57) Fluorene-d10	15.28	176	2888429	41.51	ng/ul	0.00
62) 4,6-Dinitro-2-methylphenol	15.42	200	463279	37.35	ng/ul	0.00
70) Anthracene-d10	17.14	188	4239924	42.97	ng/ul	0.00
78) Pyrene-d10	19.45	212	4211693	51.22	ng/ul	0.00
89) Benzo(a)pyrene-d12	23.36	264	3347853	43.65	ng/ul	0.01

## Target Compounds

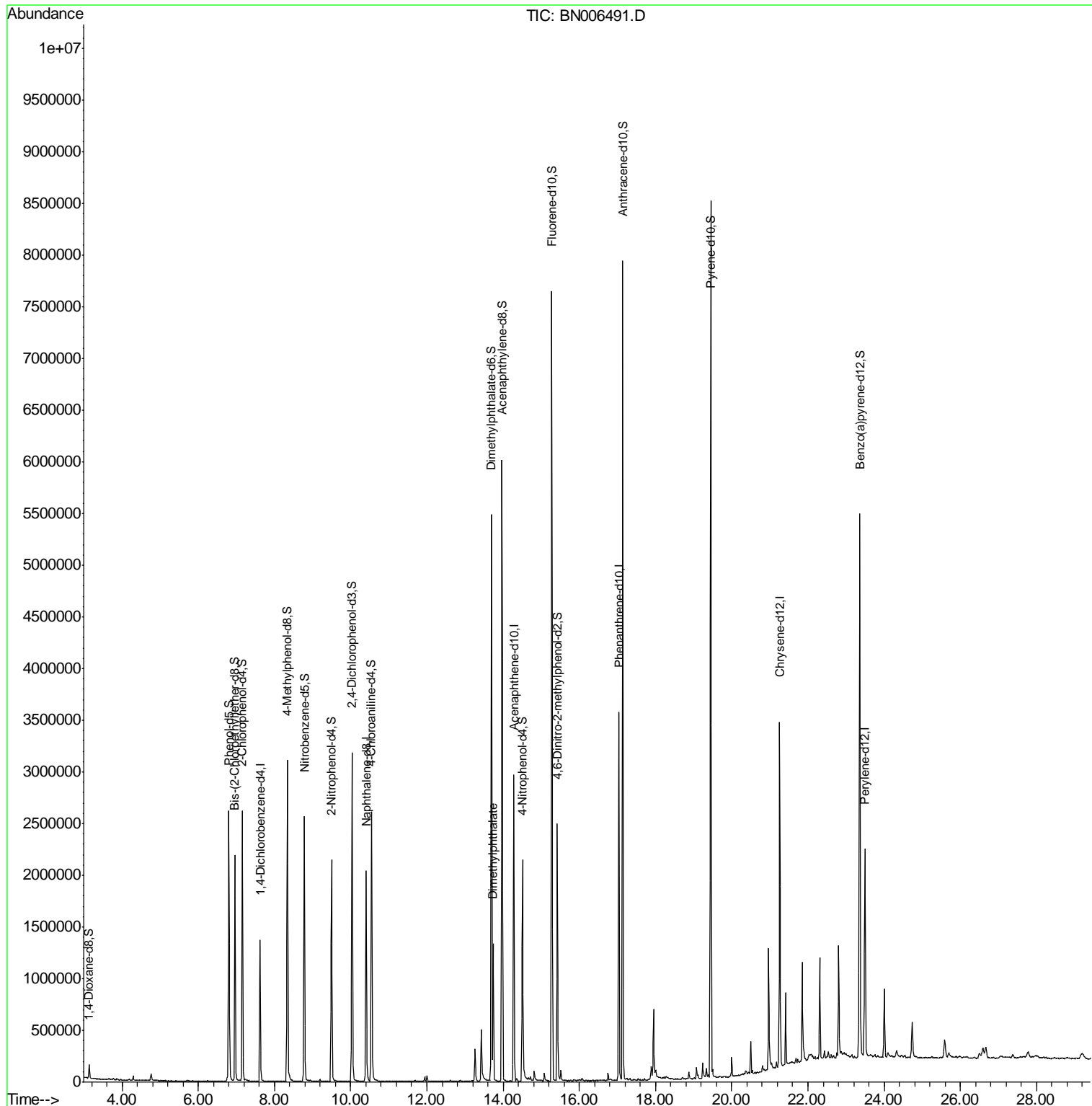
					Qvalue
44) Dimethylphthalate	13.74	163	740861	9.822	ng/ul 100

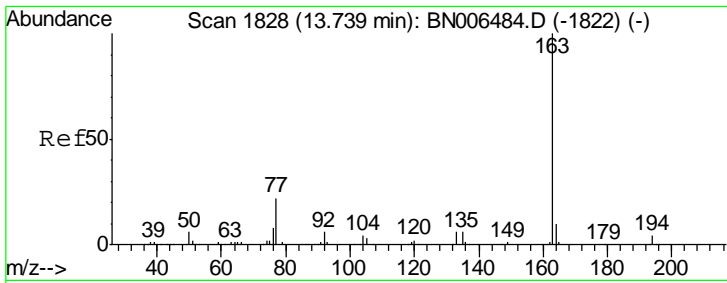
(#) = qualifier out of range (m) = manual integration (+) = signals summed

Data Path : Z:\SVOASRV\HPCHEM1\BNA\_N\DATA\BN062219\  
 Data File : BN006491.D  
 Acq On : 22 Jun 2019 16:22  
 Operator : HP/JU  
 Sample : K3362-02  
 Misc :  
 ALS Vial : 9 Sample Multiplier: 1

Instrument :  
 BNA\_N  
 ClientSampled :  
 A41Z5

Quant Time: Jun 24 04:05:52 2019  
 Quant Method : Z:\SVOASRV\HPCHEM1\BNA\_N\METHODS\SOM-EPA-BN061919MA.M  
 Quant Title : SVOA CALIBRATION  
 QLast Update : Fri Jun 21 22:42:34 2019  
 Response via : Initial Calibration





#44  
 Dimethylphthalate  
 Concen: 9.822 ng/ul  
 RT: 13.74 min Scan# 1828  
 Delta R.T. 0.00 min  
 Lab File: BN006491.D  
 Acq: 22 Jun 2019 16:22

Instrument :  
 BNA\_N  
 ClientSampleId :  
 A41Z5

Tgt Ion:163 Resp: 740861

Ion	Ratio	Lower	Upper
163	100		
194	4.1	3.4	5.0
164	10.1	8.0	12.0

