

Data Path : Z:\svoasrv\HPCHEM1\BNA_N\Data\BN062722\
 Data File : BN020515.D
 Acq On : 28 Jun 2022 00:54
 Operator : CG/JU
 Sample : N3386-08
 Misc :
 ALS Vial : 16 Sample Multiplier: 1

Instrument :
 BNA_N
 ClientSampleId :
 RE108D1-20220614

Quant Time: Jun 28 02:47:34 2022
 Quant Method : Z:\SVOASRV\HPCHEM1\BNA_N\METHODS\8270-SIM-BN062622.M
 Quant Title : ASP BNA STANDARDS FOR 5 POINT CALIBRATION
 QLast Update : Mon Jun 27 02:03:21 2022
 Response via : Initial Calibration

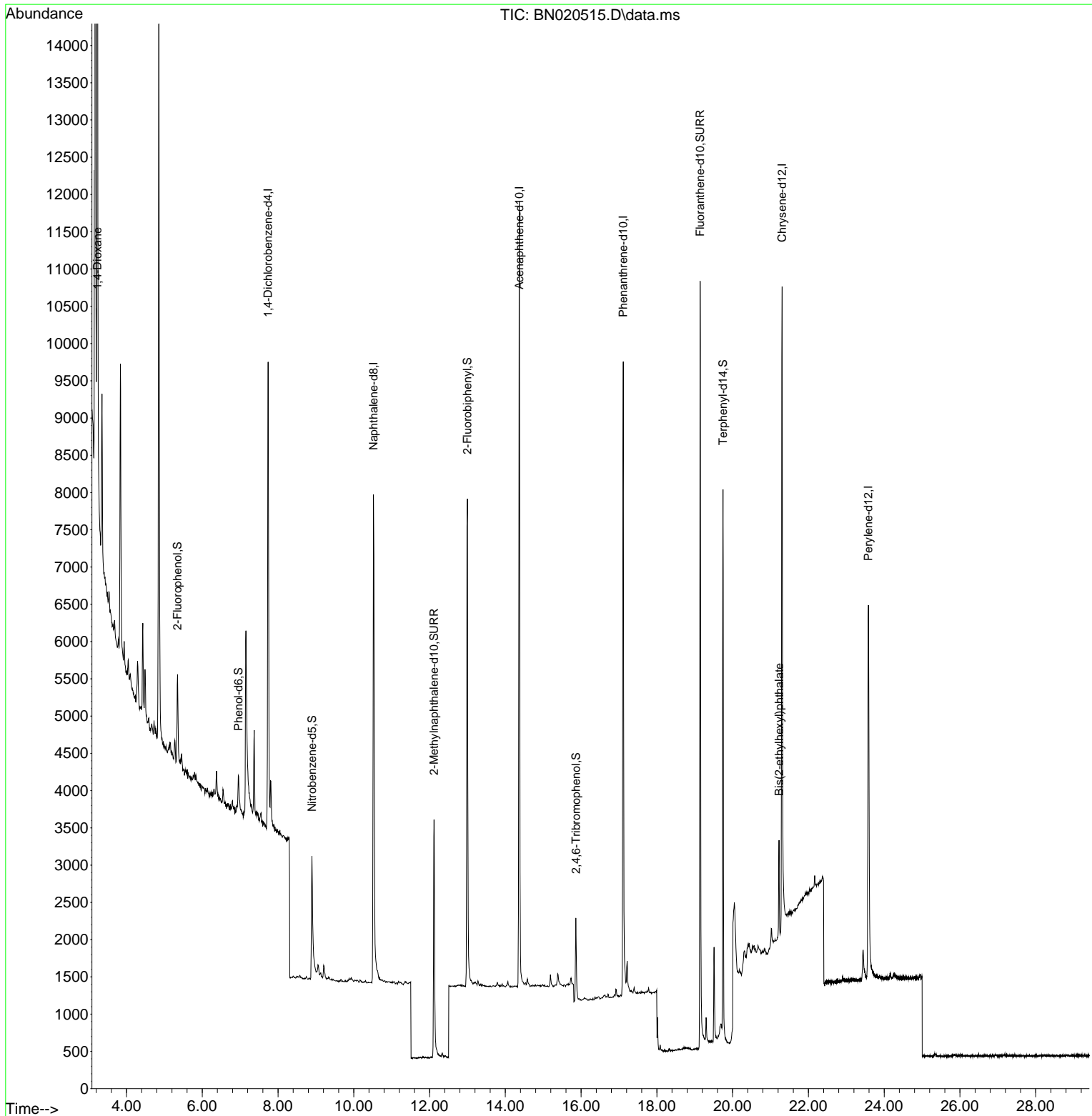
Compound	R.T.	QIon	Response	Conc	Units	Dev(Min)	
Internal Standards							
1) 1,4-Dichlorobenzene-d4	7.739	152	3421	0.400	ng	0.00	
7) Naphthalene-d8	10.520	136	10604	0.400	ng	# 0.00	
13) Acenaphthene-d10	14.367	164	6253	0.400	ng	0.00	
19) Phenanthrene-d10	17.113	188	12758	0.400	ng	0.00	
29) Chrysene-d12	21.306	240	10092	0.400	ng	# 0.00	
35) Perylene-d12	23.583	264	7842	0.400	ng	-0.02	
System Monitoring Compounds							
4) 2-Fluorophenol	5.348	112	1169	0.123	ng	0.00	
5) Phenol-d6	6.952	99	727	0.064	ng	0.00	
8) Nitrobenzene-d5	8.897	82	2075	0.241	ng	0.00	
11) 2-Methylnaphthalene-d10	12.117	152	5308	0.292	ng	0.00	
14) 2,4,6-Tribromophenol	15.861	330	645	0.274	ng	0.00	
15) 2-Fluorobiphenyl	12.999	172	6992	0.271	ng	0.00	
27) Fluoranthene-d10	19.143	212	12814	0.338	ng	0.00	
31) Terphenyl-d14	19.746	244	9023	0.374	ng	0.00	
Target Compounds							
2) 1,4-Dioxane	3.232	88	12916	2.880	ng	93	Qvalue
34) Bis(2-ethylhexyl)phtha...	21.225	149	1332	0.066	ng	# 94	

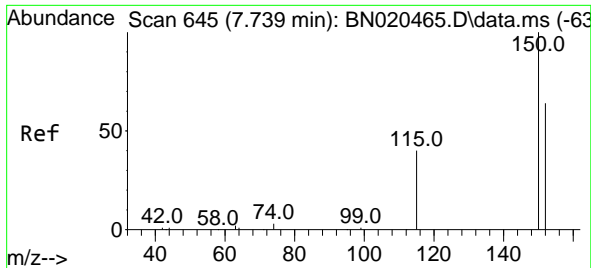
(#) = qualifier out of range (m) = manual integration (+) = signals summed

Data Path : Z:\svoasrv\HPCHEM1\BNA_N\Data\BN062722\
 Data File : BN020515.D
 Acq On : 28 Jun 2022 00:54
 Operator : CG/JU
 Sample : N3386-08
 Misc :
 ALS Vial : 16 Sample Multiplier: 1

Instrument :
 BNA_N
 ClientSampleId :
 RE108D1-20220614

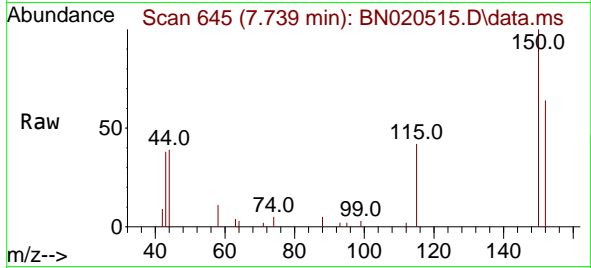
Quant Time: Jun 28 02:47:34 2022
 Quant Method : Z:\SVOASRV\HPCHEM1\BNA_N\METHODS\8270-SIM-BN062622.M
 Quant Title : ASP BNA STANDARDS FOR 5 POINT CALIBRATION
 QLast Update : Mon Jun 27 02:03:21 2022
 Response via : Initial Calibration



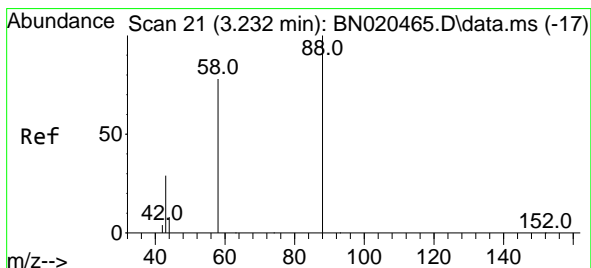
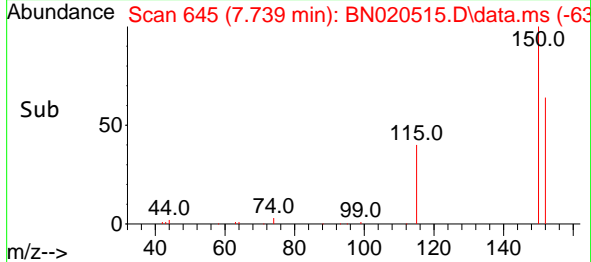
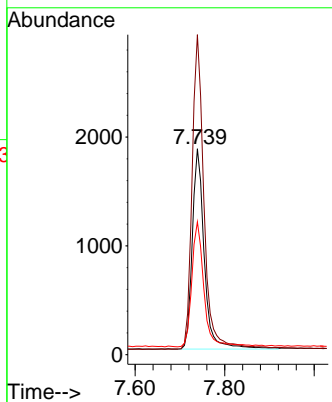


#1
 1,4-Dichlorobenzene-d4
 Concen: 0.400 ng
 RT: 7.739 min Scan# 64
 Delta R.T. -0.000 min
 Lab File: BN020515.D
 Acq: 28 Jun 2022 00:54

Instrument :
 BNA_N
 ClientSampleId :
 RE108D1-20220614

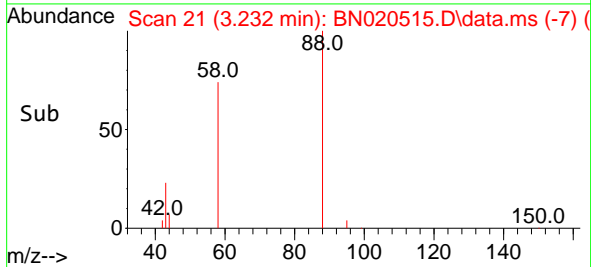
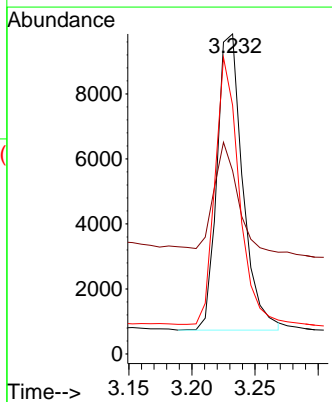
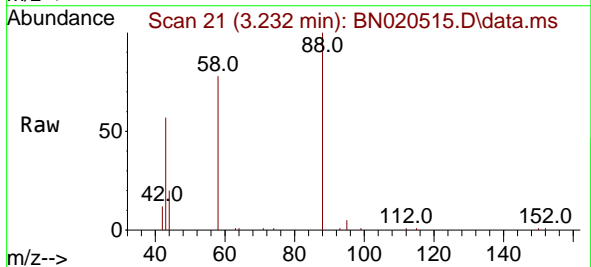


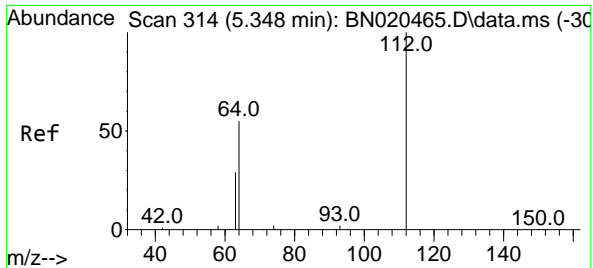
Tgt Ion:152 Resp: 3421
 Ion Ratio Lower Upper
 152 100
 150 155.4 127.9 191.9
 115 64.5 51.4 77.2



#2
 1,4-Dioxane
 Concen: 2.880 ng
 RT: 3.232 min Scan# 21
 Delta R.T. 0.000 min
 Lab File: BN020515.D
 Acq: 28 Jun 2022 00:54

Tgt Ion: 88 Resp: 12916
 Ion Ratio Lower Upper
 88 100
 43 33.6 30.2 45.2
 58 84.0 73.0 109.6



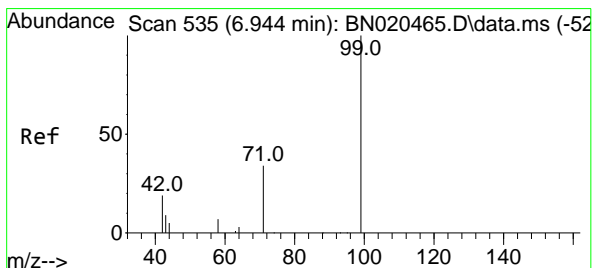
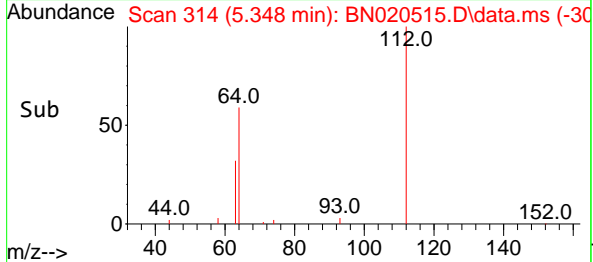
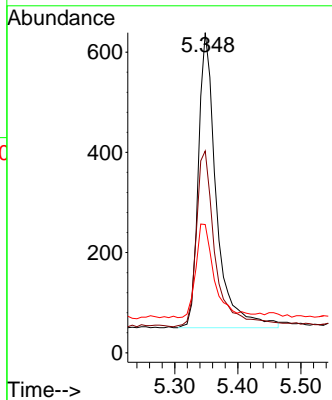
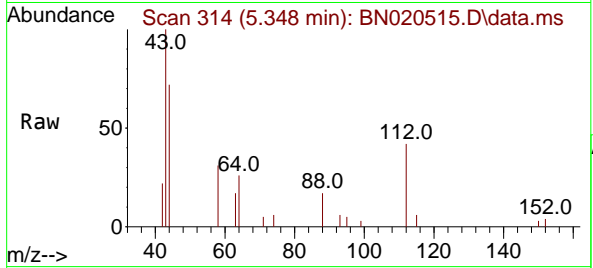


#4
 2-Fluorophenol
 Concen: 0.123 ng
 RT: 5.348 min Scan# 314
 Delta R.T. 0.000 min
 Lab File: BN020515.D
 Acq: 28 Jun 2022 00:54

Instrument :
 BNA_N
 ClientSampleId :
 RE108D1-20220614

Tgt Ion: 112 Resp: 1169

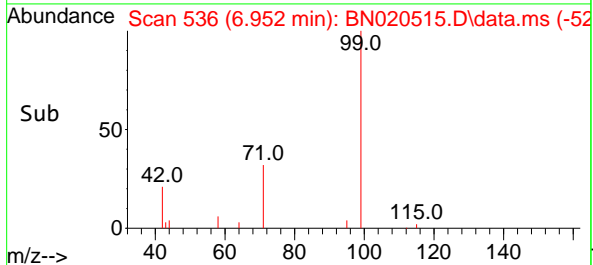
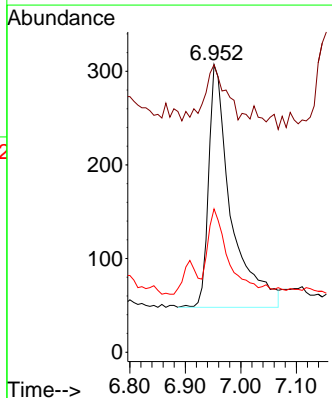
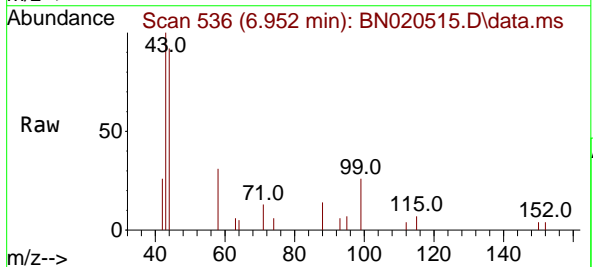
Ion	Ratio	Lower	Upper
112	100		
64	63.1	49.1	73.7
63	33.0	26.3	39.5

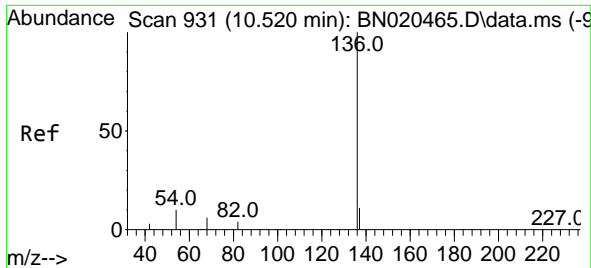


#5
 Phenol-d6
 Concen: 0.064 ng
 RT: 6.952 min Scan# 536
 Delta R.T. 0.007 min
 Lab File: BN020515.D
 Acq: 28 Jun 2022 00:54

Tgt Ion: 99 Resp: 727

Ion	Ratio	Lower	Upper
99	100		
42	22.0	19.3	28.9
71	29.3	27.5	41.3



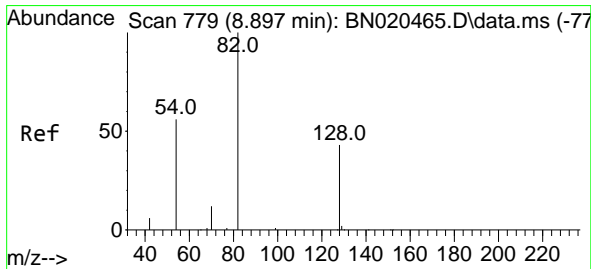
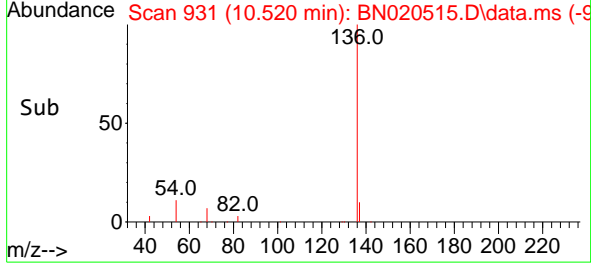
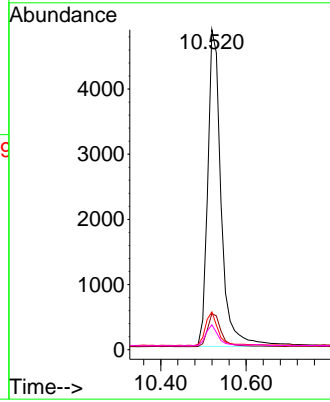
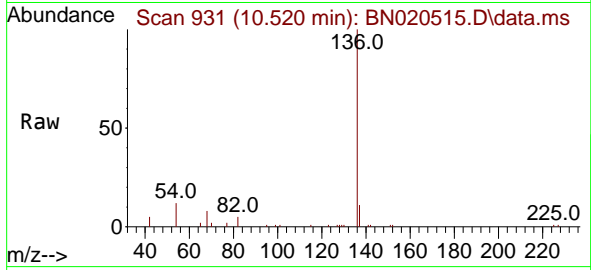


#7
 Naphthalene-d8
 Concen: 0.400 ng
 RT: 10.520 min Scan# 91
 Delta R.T. 0.000 min
 Lab File: BN020515.D
 Acq: 28 Jun 2022 00:54

Instrument :
 BNA_N
 ClientSampleId :
 RE108D1-20220614

Tgt Ion: 136 Resp: 10604

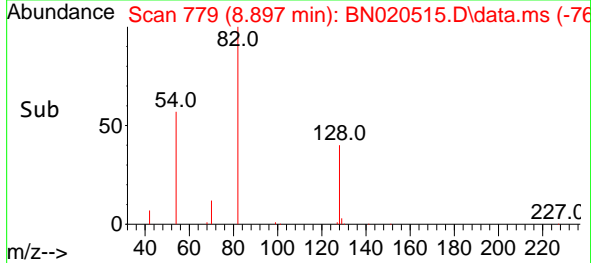
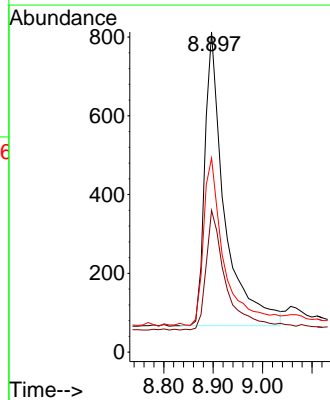
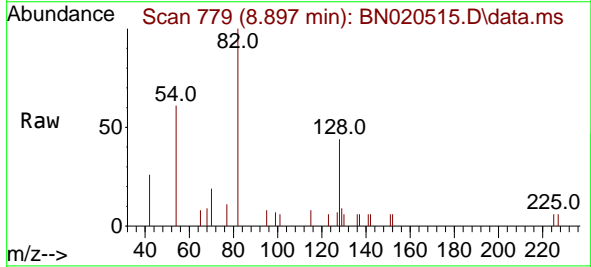
Ion	Ratio	Lower	Upper
136	100		
137	11.3	9.0	13.6
54	11.8	6.2	9.2#
68	7.7	4.4	6.6#

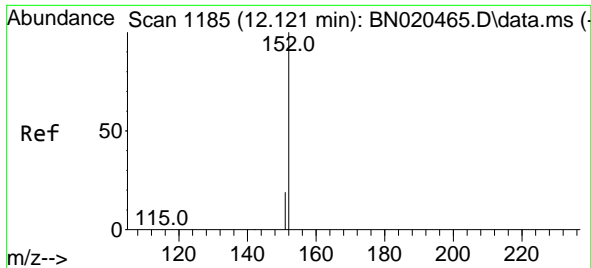


#8
 Nitrobenzene-d5
 Concen: 0.241 ng
 RT: 8.897 min Scan# 779
 Delta R.T. 0.000 min
 Lab File: BN020515.D
 Acq: 28 Jun 2022 00:54

Tgt Ion: 82 Resp: 2075

Ion	Ratio	Lower	Upper
82	100		
128	44.3	35.0	52.6
54	60.6	46.2	69.4

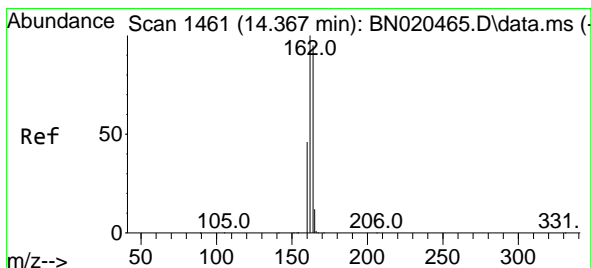
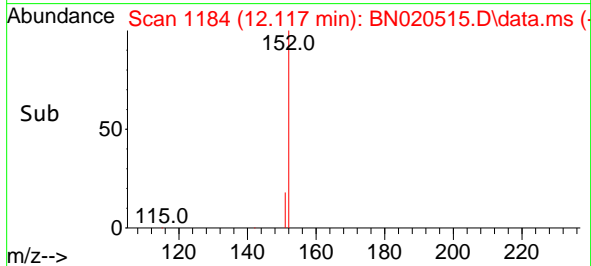
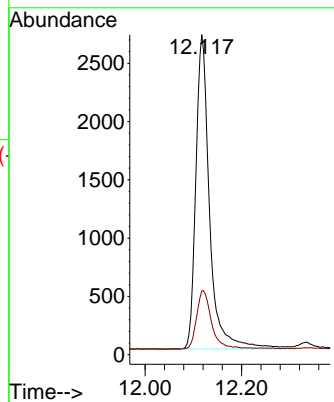
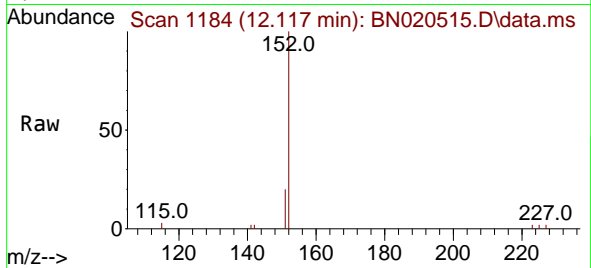




#11
 2-Methylnaphthalene-d10
 Concen: 0.292 ng
 RT: 12.117 min Scan# 1184
 Delta R.T. -0.004 min
 Lab File: BN020515.D
 Acq: 28 Jun 2022 00:54

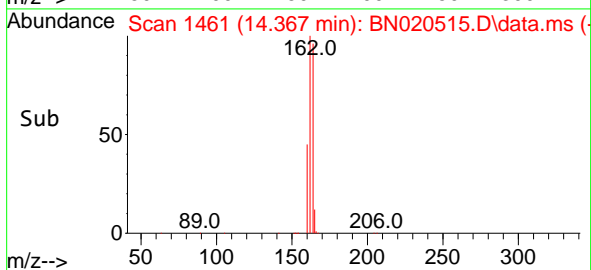
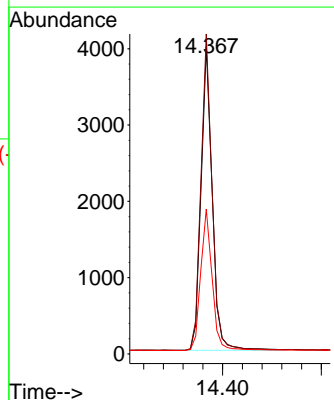
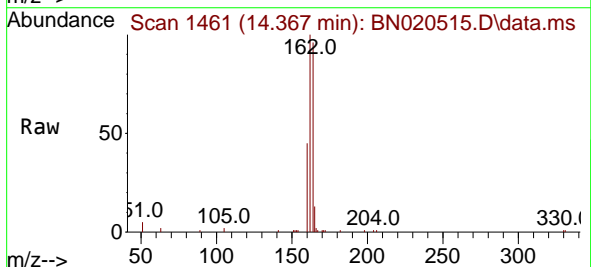
Instrument :
 BNA_N
 ClientSampleId :
 RE108D1-20220614

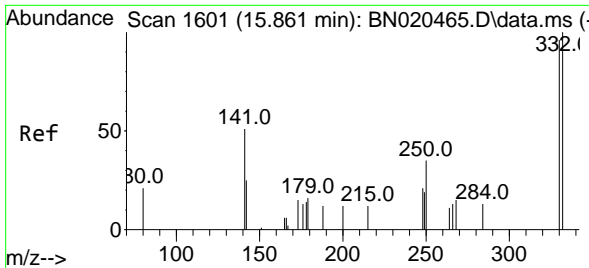
Tgt Ion:152 Resp: 5308
 Ion Ratio Lower Upper
 152 100
 151 20.3 16.2 24.4



#13
 Acenaphthene-d10
 Concen: 0.400 ng
 RT: 14.367 min Scan# 1461
 Delta R.T. 0.000 min
 Lab File: BN020515.D
 Acq: 28 Jun 2022 00:54

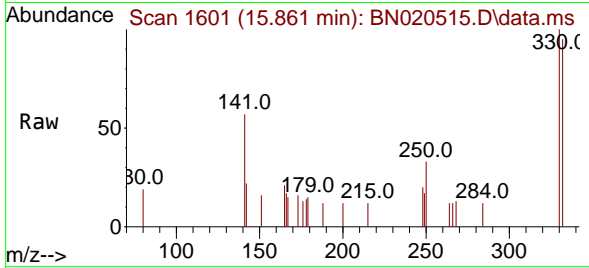
Tgt Ion:164 Resp: 6253
 Ion Ratio Lower Upper
 164 100
 162 104.1 82.1 123.1
 160 47.1 38.6 58.0



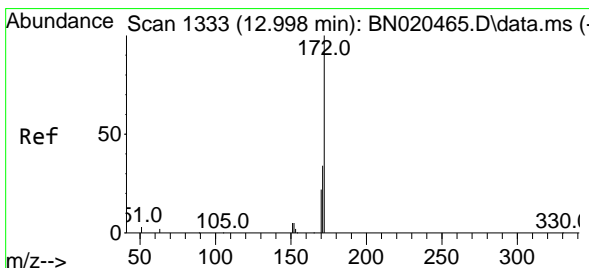
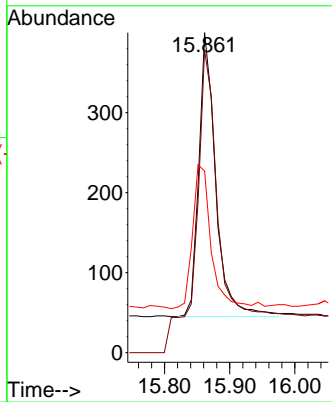
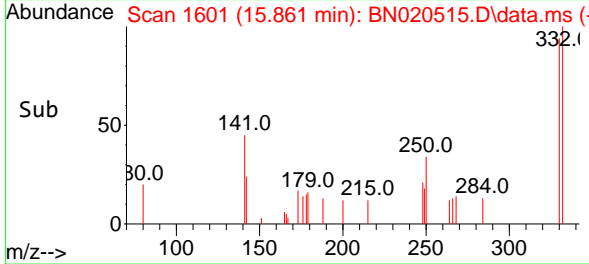


#14
 2,4,6-Tribromophenol
 Concen: 0.274 ng
 RT: 15.861 min Scan# 1601
 Delta R.T. 0.000 min
 Lab File: BN020515.D
 Acq: 28 Jun 2022 00:54

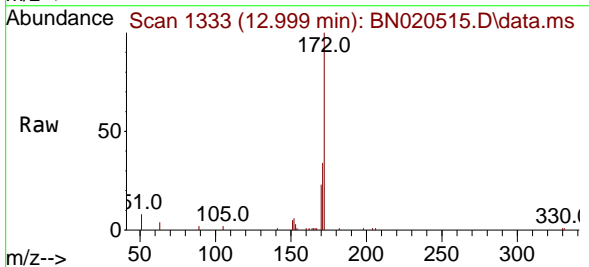
Instrument :
 BNA_N
 ClientSampleId :
 RE108D1-20220614



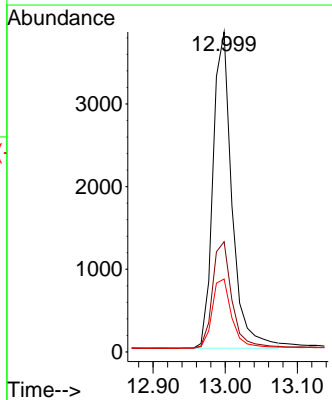
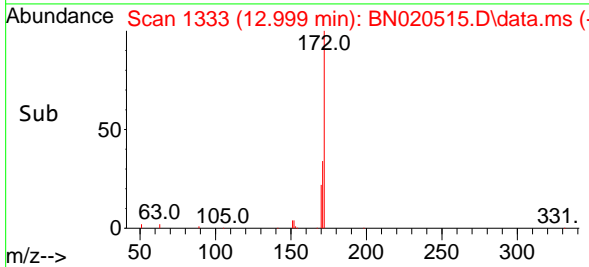
Tgt Ion:330 Resp: 645
 Ion Ratio Lower Upper
 330 100
 332 164.5 77.6 116.4#
 141 55.2 41.0 61.4

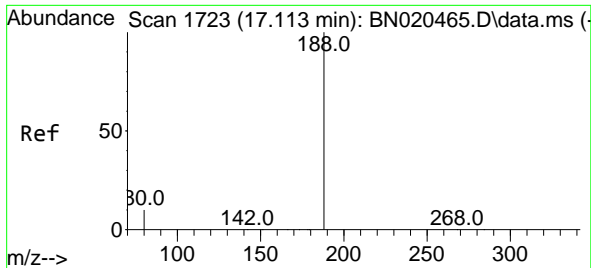


#15
 2-Fluorobiphenyl
 Concen: 0.271 ng
 RT: 12.999 min Scan# 1333
 Delta R.T. 0.000 min
 Lab File: BN020515.D
 Acq: 28 Jun 2022 00:54



Tgt Ion:172 Resp: 6992
 Ion Ratio Lower Upper
 172 100
 171 34.4 27.2 40.8
 170 22.8 18.2 27.4



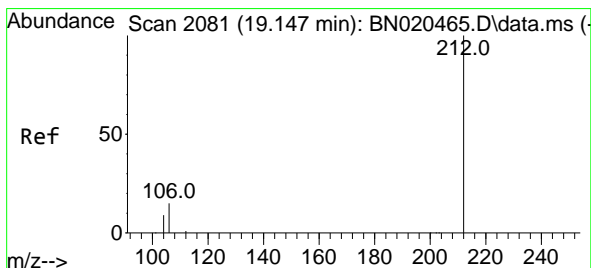
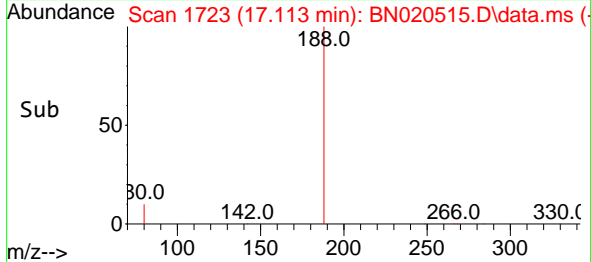
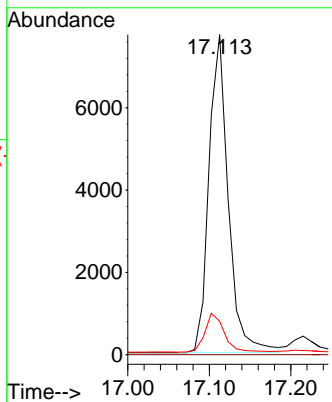
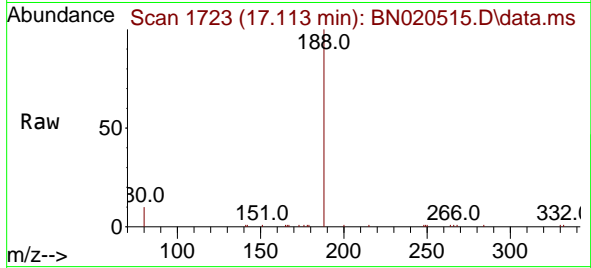


#19
 Phenanthrene-d10
 Concen: 0.400 ng
 RT: 17.113 min Scan# 11
 Delta R.T. -0.000 min
 Lab File: BN020515.D
 Acq: 28 Jun 2022 00:54

Instrument :
 BNA_N
 ClientSampleId :
 RE108D1-20220614

Tgt Ion:188 Resp: 12758

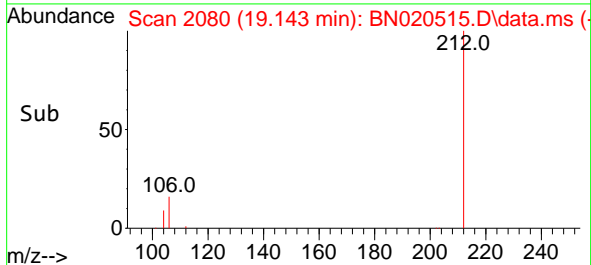
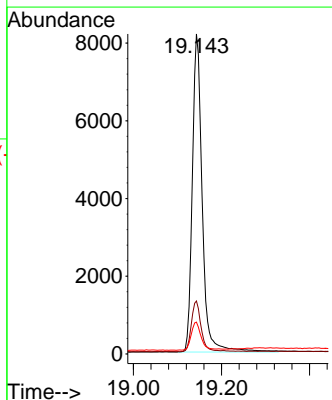
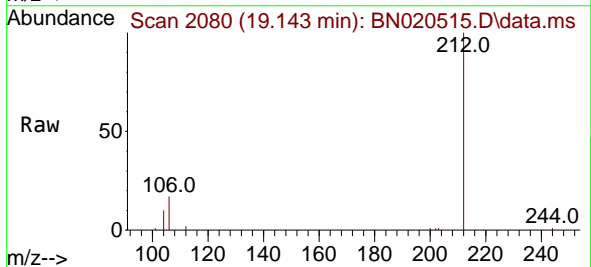
Ion	Ratio	Lower	Upper
188	100		
94	0.0	0.0	0.0
80	10.5	7.4	11.2

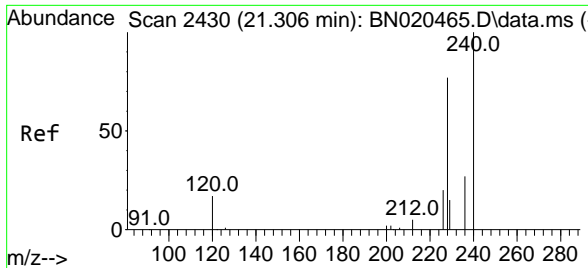


#27
 Fluoranthene-d10
 Concen: 0.338 ng
 RT: 19.143 min Scan# 2080
 Delta R.T. -0.004 min
 Lab File: BN020515.D
 Acq: 28 Jun 2022 00:54

Tgt Ion:212 Resp: 12814

Ion	Ratio	Lower	Upper
212	100		
106	15.7	12.6	19.0
104	8.8	7.2	10.8



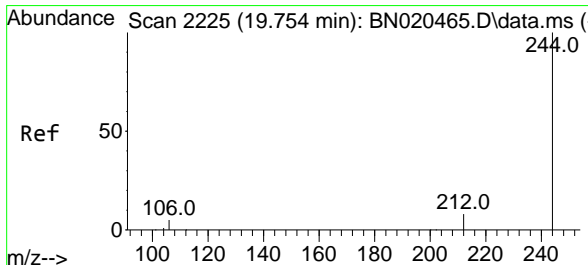
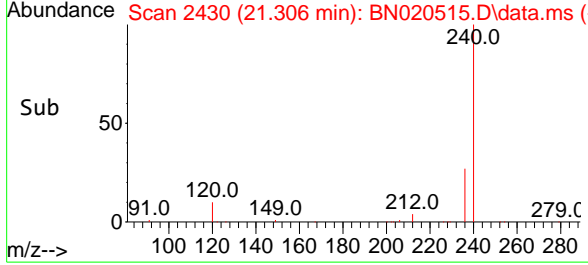
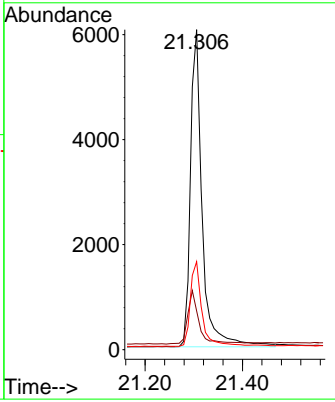
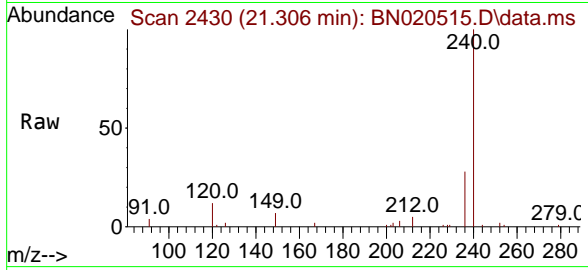


#29
 Chrysene-d12
 Concen: 0.400 ng
 RT: 21.306 min Scan# 24
 Delta R.T. 0.000 min
 Lab File: BN020515.D
 Acq: 28 Jun 2022 00:54

Instrument : BNA_N
 ClientSampleId : RE108D1-20220614

Tgt Ion:240 Resp: 10092

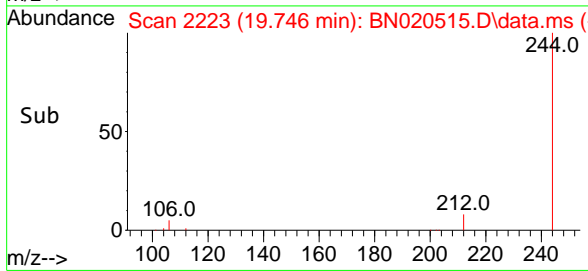
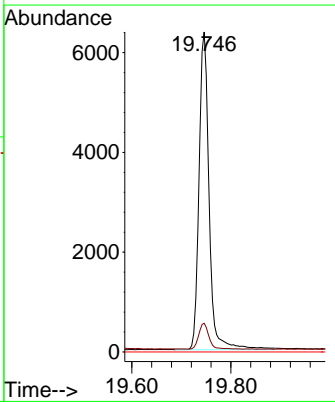
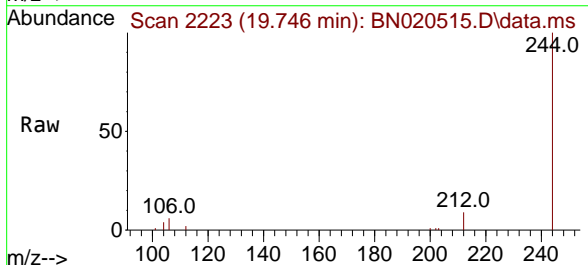
Ion	Ratio	Lower	Upper
240	100		
120	12.1	14.6	21.8#
236	27.5	22.6	33.8

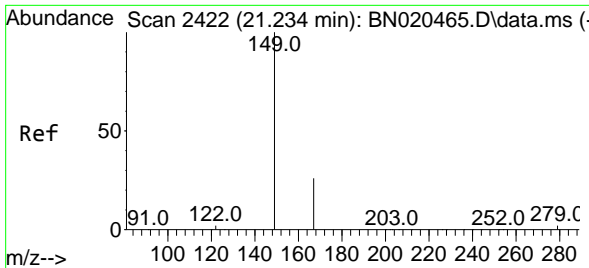


#31
 Terphenyl-d14
 Concen: 0.374 ng
 RT: 19.746 min Scan# 2223
 Delta R.T. -0.008 min
 Lab File: BN020515.D
 Acq: 28 Jun 2022 00:54

Tgt Ion:244 Resp: 9023

Ion	Ratio	Lower	Upper
244	100		
212	8.9	7.1	10.7
122	0.0	0.0	0.0



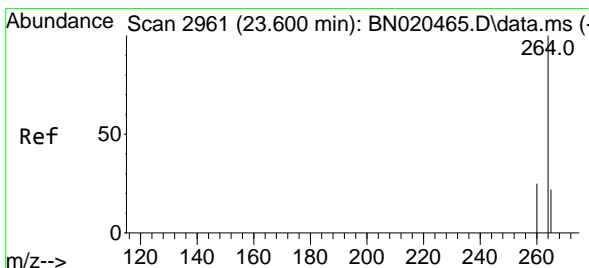
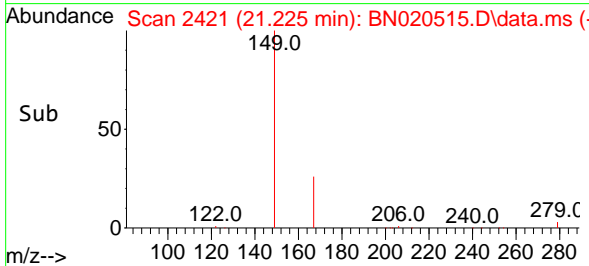
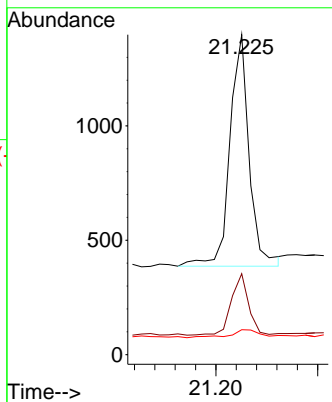
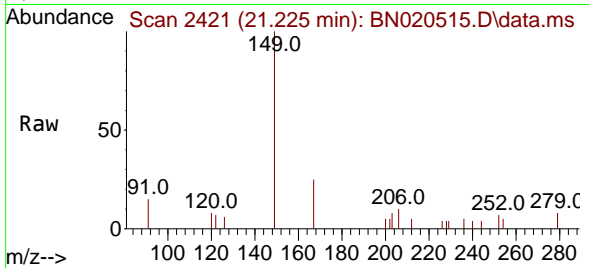


#34
 Bis(2-ethylhexyl)phthalate
 Concen: 0.066 ng
 RT: 21.225 min Scan# 2421
 Delta R.T. -0.009 min
 Lab File: BN020515.D
 Acq: 28 Jun 2022 00:54

Instrument :
 BNA_N
 ClientSampleId :
 RE108D1-20220614

Tgt Ion:149 Resp: 1332

Ion	Ratio	Lower	Upper
149	100		
167	24.1	21.7	32.5
279	6.0	2.2	3.2



#35
 Perylene-d12
 Concen: 0.400 ng
 RT: 23.583 min Scan# 2955
 Delta R.T. -0.017 min
 Lab File: BN020515.D
 Acq: 28 Jun 2022 00:54

Tgt Ion:264 Resp: 7842

Ion	Ratio	Lower	Upper
264	100		
260	25.7	20.9	31.3
265	41.2	28.0	42.0

