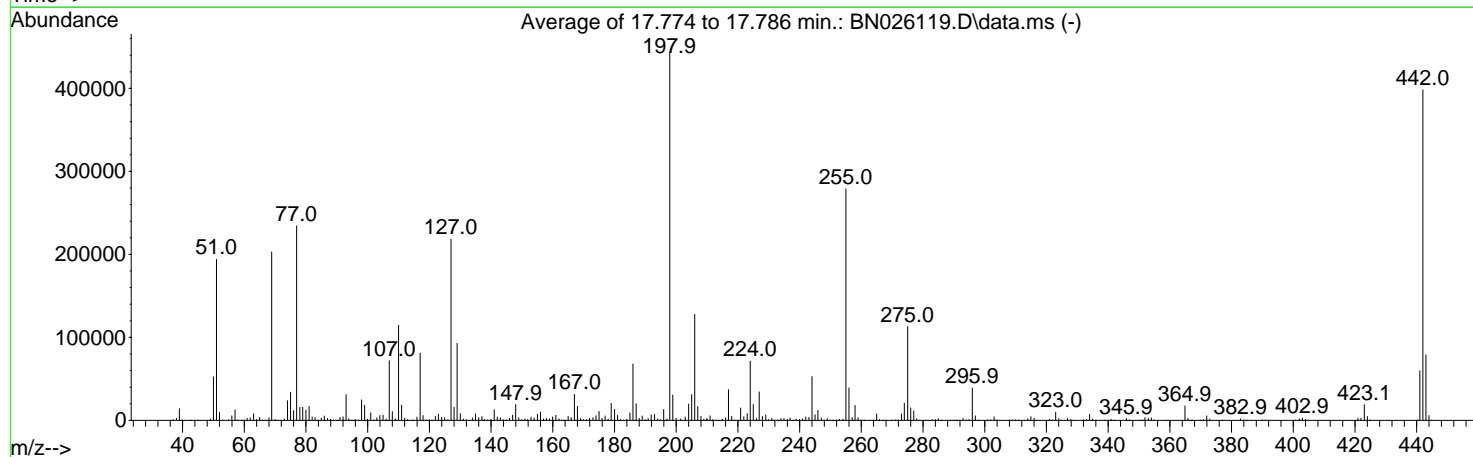
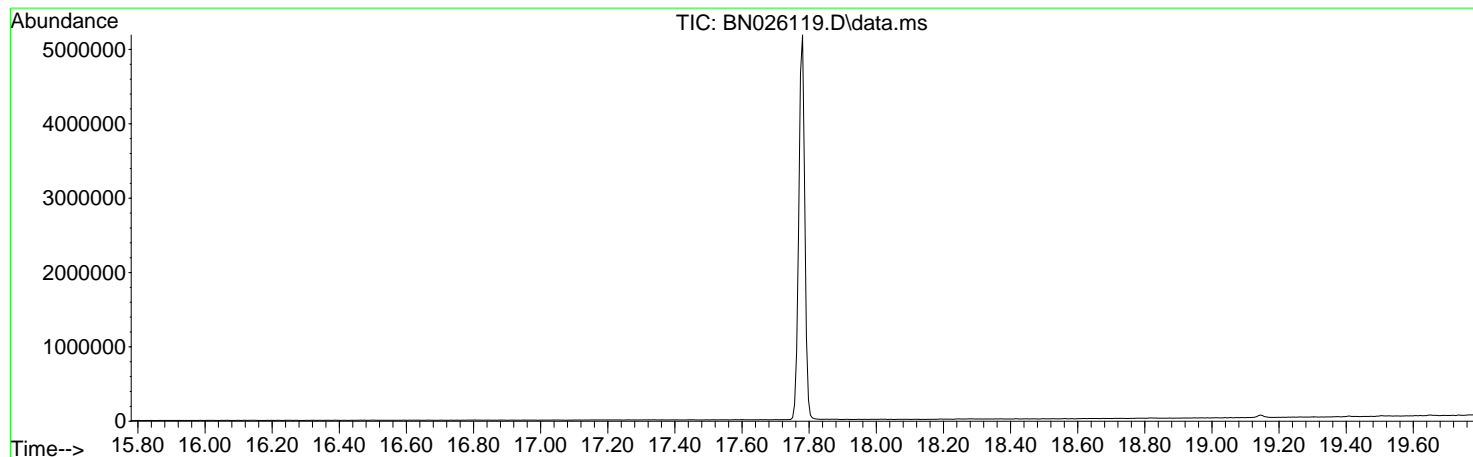


Data Path : Z:\svoasrv\HPCHEM1\BNA\_N\Data\BN070123\  
 Data File : BN026119.D  
 Acq On : 30 Jun 2023 07:53  
 Operator : MA/JU  
 Sample : DFTPP344  
 Misc :  
 ALS Vial : 1 Sample Multiplier: 1

Instrument :  
 BNA\_N  
 ClientSampleId :  
 DFTPP344

Integration File: rteint.p

Method : Z:\SVOASRV\HPCHEM1\BNA\_N\METHODS\SFAM-EPA-SIM-BN062223.M  
 Title : ASP BNA STANDARDS FOR 5 POINT CALIBRATION  
 Last Update : Sat Jul 01 01:46:24 2023



AutoFind: Scans 2480, 2481, 2482; Background Corrected with Scan 2472

Target Mass	Rel. to Mass	Lower Limit%	Upper Limit%	Rel. Abn%	Raw Abn	Result Pass/Fail
51	198	10	80	43.8	194027	PASS
68	69	0.00	2	1.6	3188	PASS
69	198	0.00	100	45.8	202941	PASS
70	69	0.00	2	0.6	1122	PASS
127	198	10	80	49.2	218219	PASS
197	198	0.00	2	0.4	1714	PASS
198	198	100	100	100.0	443264	PASS
199	198	5	9	6.9	30435	PASS
275	198	10	60	25.5	112955	PASS
365	198	1	100	3.9	17347	PASS
441	198	0.01	100	13.5	59829	PASS
442	198	50	100	89.9	398315	PASS
443	442	15	24	19.8	78955	PASS

m/z	Abundance
35.90	288.0
38.90	256.0
39.80	811.0
40.90	339.0
42.90	216.0
44.00	1860.0
45.00	160.0
49.00	280.0
54.90	260.0
59.00	174.0
68.90	152.0
73.00	1385.0
75.00	247.0
76.90	540.0
81.00	248.0
83.80	243.0
85.90	165.0
91.00	207.0
95.90	463.0
118.90	237.0
133.00	636.0
134.80	258.0
147.00	642.0
148.90	196.0
162.80	176.0
177.10	157.0
191.00	481.0
191.90	163.0
193.00	520.0
207.00	5421.0
208.00	1015.0
209.00	951.0
220.90	292.0
266.90	208.0
281.00	757.0
281.90	358.0
283.00	312.0
340.90	195.0
354.90	263.0

**Instrument :**  
BNA\_N  
**ClientSampleId :**  
DFTPP344

m/z	Abundance
36.00	280.0
37.00	1408.0
38.00	3308.0
39.00	17232.0
39.90	1416.0
41.00	598.0
43.00	559.0
43.90	2201.0
44.90	752.0
48.00	285.0
49.00	1641.0
50.00	64080.0
51.00	232960.0
52.00	11168.0
53.00	455.0
54.90	1265.0
55.90	6607.0
57.00	14585.0
57.90	633.0
59.10	257.0
59.90	226.0
61.00	3235.0
62.00	3699.0
63.00	9361.0
64.00	1516.0
65.00	4285.0
65.90	366.0
67.00	401.0
68.00	4175.0
68.90	239680.0
70.00	1251.0
71.00	290.0
72.10	177.0
73.00	3399.0
74.00	28760.0
75.00	39192.0
76.00	14293.0
77.00	279040.0
78.00	19056.0
79.00	19248.0
80.00	13926.0
81.00	21088.0
82.00	4729.0
82.90	4252.0
83.90	791.0
85.00	3152.0
86.00	5692.0
87.00	2561.0
88.00	1064.0
88.90	594.0
90.00	152.0
91.00	4367.0
92.00	5098.0
93.00	36496.0
93.90	2402.0
95.00	552.0
96.00	2002.0
97.00	726.0
98.00	28904.0
99.00	21312.0
99.90	1656.0
101.00	11646.0
101.90	627.0
102.90	3764.0
104.00	6535.0
104.90	6686.0
106.00	2088.0
107.00	83544.0
108.00	12042.0
108.90	2040.0
110.00	130352.0
111.00	21752.0
112.00	3195.0
112.90	1056.0
114.00	198.0
114.90	440.0
115.90	4323.0
117.00	93208.0
117.90	6454.0
118.90	775.0
119.90	1072.0
120.80	464.0
122.00	5526.0
122.90	8498.0
124.00	4149.0
125.00	3587.0
126.00	1137.0
127.00	248320.0
128.00	18600.0
129.00	106744.0
130.00	9417.0
131.00	1925.0

**Instrument :**  
BNA\_N  
**ClientSampleId :**  
DFTPP344

132.00	786.0
132.90	866.0
134.00	3374.0
135.00	9102.0
136.00	3751.0
137.00	5284.0
137.90	1184.0
138.90	561.0
139.90	1385.0
141.00	14873.0
142.00	4329.0
143.00	3321.0
143.90	995.0
145.00	701.0
145.90	3083.0
147.00	7927.0
147.90	20912.0
149.00	4038.0
149.90	1221.0
150.90	1598.0
151.90	1025.0
152.90	4103.0
153.90	2867.0
155.00	8380.0
156.00	11741.0
157.00	2084.0
157.90	2771.0
158.90	1661.0
160.00	4736.0
161.00	6590.0
162.00	1968.0
162.90	808.0
163.90	410.0
165.00	5551.0
166.00	4201.0
167.00	34408.0
168.00	18648.0
169.00	2679.0
169.90	980.0
170.90	1189.0
171.90	2543.0
173.00	3309.0
174.00	6100.0
175.00	11207.0
176.00	2729.0
176.90	5478.0
178.00	1862.0
178.90	21544.0
180.00	15828.0
181.00	6669.0
182.00	1036.0
183.00	466.0
183.90	1362.0
185.00	9592.0
186.00	71440.0
187.00	22224.0
188.00	2487.0
189.00	5630.0
189.90	1015.0
190.90	2577.0
191.90	7284.0
193.00	7957.0
194.00	1891.0
194.90	557.0
196.00	14174.0
197.10	2433.0
197.90	485632.0
198.90	32808.0
199.90	2695.0
201.50	2066.0
203.00	4038.0
204.00	20976.0
205.00	33192.0
206.00	129768.0
207.00	22960.0
208.00	6516.0
209.00	2412.0
209.90	2087.0
210.20	2262.0
211.00	5842.0
212.00	1015.0
212.90	420.0
213.90	218.0
214.90	1714.0
216.00	3104.0
216.90	40048.0
218.00	4724.0
218.90	424.0
221.00	16872.0
221.80	4551.0
223.00	9022.0
224.00	73216.0
225.00	21504.0
226.00	2328.0
226.90	36464.0
228.00	5325.0

**Instrument :**  
BNA\_N  
**ClientSampleId :**  
DFTPP344

229.00	7044.0
229.90	1092.0
231.00	2647.0
231.90	530.0
232.90	654.0
233.90	2221.0
234.90	2339.0
236.00	1735.0
236.90	3467.0
238.00	400.0
238.90	1485.0
239.90	1134.0
240.90	1780.0
242.00	4274.0
243.00	3530.0
244.00	59488.0
245.00	7125.0
246.00	11868.0
247.00	2746.0
247.90	389.0
249.00	2173.0
249.90	403.0
250.80	404.0
251.90	448.0
253.00	1258.0
254.00	1237.0
255.00	282176.0
256.00	43320.0
257.00	3579.0
258.00	16464.0
258.90	3052.0
259.90	556.0
260.90	372.0
262.90	277.0
264.00	460.0
265.00	8505.0
265.90	1079.0
267.00	222.0
270.00	388.0
271.00	674.0
272.00	680.0
273.00	7731.0
274.00	21512.0
275.00	110464.0
276.00	16134.0
277.00	12348.0
277.90	2004.0
279.00	492.0
280.90	918.0
282.00	550.0
282.90	1093.0
284.00	897.0
285.00	1955.0
285.90	347.0
288.00	175.0
288.90	417.0
290.00	412.0
290.80	213.0
291.90	510.0
293.00	1973.0
293.90	531.0
294.90	752.0
296.00	38856.0
296.90	5435.0
298.00	443.0
301.10	493.0
302.00	664.0
303.00	3561.0
303.80	806.0
305.10	196.0
308.00	594.0
308.90	248.0
309.90	614.0
310.90	193.0
312.90	335.0
313.90	1814.0
315.00	4426.0
316.00	2881.0
316.90	349.0
320.90	1040.0
321.70	509.0
323.00	9218.0
324.00	2046.0
324.80	168.0
325.90	155.0
326.90	2066.0
327.90	1031.0
328.90	196.0
332.00	687.0
333.00	1027.0
334.00	6746.0
335.00	1789.0
335.80	152.0
340.00	228.0
341.00	1297.0
341.90	358.0

Instrument :  
BNA\_N  
ClientSampleId :  
DFTPP344

345.90	1911.0
346.90	416.0
350.90	276.0
351.90	3164.0
353.00	2162.0
354.00	2743.0
354.80	659.0
358.80	192.0
364.90	15209.0
365.90	2217.0
369.90	283.0
370.90	810.0
372.00	4551.0
373.00	1544.0
382.90	1678.0
384.00	384.0
390.00	295.0
391.00	274.0
391.90	464.0
400.80	346.0
401.90	1834.0
402.90	2238.0
403.90	1051.0
404.90	288.0
415.00	228.0
421.00	2638.0
421.90	2229.0
423.00	15693.0
424.00	4216.0
425.00	530.0
439.90	159.0
441.00	47632.0
442.00	320512.0
443.00	65888.0
444.00	5011.0
444.90	374.0

**Instrument :**  
BNA\_N  
**ClientSampleId :**  
DFTPP344

m/z	Abundance
36.00	259.0
36.90	909.0
38.00	2934.0
39.00	17120.0
39.90	1393.0
41.00	441.0
42.90	495.0
43.90	2013.0
45.00	560.0
47.80	198.0
49.00	1939.0
50.00	60688.0
51.00	228288.0
52.00	11696.0
53.00	582.0
55.00	1348.0
56.00	6082.0
57.00	15249.0
57.90	677.0
58.90	299.0
59.90	278.0
60.90	2741.0
61.90	3575.0
63.00	9693.0
64.00	1450.0
65.00	4023.0
66.00	467.0
66.90	368.0
68.00	3407.0
68.90	237440.0
70.00	1327.0
71.00	254.0
73.00	3346.0
74.00	27160.0
75.00	40368.0
76.00	13649.0
77.00	273344.0
78.00	18200.0
78.90	18040.0
80.00	15074.0
81.00	18560.0
82.00	5077.0
83.00	4296.0
83.90	581.0
85.00	2837.0
86.00	6829.0
87.00	2818.0
87.90	1489.0
88.90	603.0
91.00	4075.0
92.00	5322.0
93.00	36112.0
93.90	2428.0
94.80	579.0
96.00	1939.0
97.20	612.0
98.00	28952.0
99.00	21528.0
99.90	2030.0
101.00	10767.0
102.00	675.0
103.00	3480.0
103.90	7391.0
105.00	7307.0
105.90	2035.0
107.00	84904.0
108.00	12800.0
109.00	2272.0
110.00	136448.0
111.00	21712.0
112.00	2687.0
113.00	774.0
114.80	426.0
116.00	4978.0
117.00	95808.0
118.00	6722.0
118.90	827.0
120.00	996.0
121.00	290.0
121.90	5597.0
122.90	8296.0
123.90	4373.0
124.90	3727.0
126.00	970.0
127.00	255744.0
128.00	18392.0
129.00	107360.0
130.00	9743.0
131.00	1776.0
132.00	1162.0
133.00	1048.0
134.00	3251.0

**Instrument :**  
BNA\_N  
**ClientSampleId :**  
DFTPP344

135.00	9311.0
136.00	3672.0
137.00	5455.0
137.90	1257.0
138.90	819.0
139.90	1412.0
141.00	14274.0
142.00	4561.0
143.00	3622.0
143.90	1005.0
145.00	679.0
146.00	2532.0
147.00	8303.0
148.00	22040.0
149.00	3914.0
150.00	1225.0
151.00	1888.0
151.80	1031.0
153.00	4646.0
154.00	3505.0
155.00	8444.0
156.00	11357.0
157.00	1787.0
157.90	2776.0
158.90	2023.0
159.90	4928.0
161.00	7743.0
162.00	2010.0
162.90	501.0
163.90	680.0
165.00	6129.0
165.90	4126.0
167.00	38072.0
168.00	20560.0
169.00	2589.0
169.90	1218.0
170.90	996.0
171.90	2940.0
173.00	4095.0
174.00	6698.0
175.00	13505.0
175.90	2600.0
177.00	6197.0
177.90	1897.0
178.90	24248.0
180.00	15441.0
181.00	6708.0
182.00	1141.0
182.80	520.0
184.00	2120.0
185.00	11725.0
186.00	84968.0
187.00	24160.0
188.00	2371.0
189.00	5985.0
190.00	1151.0
190.90	3239.0
191.90	8068.0
193.00	9134.0
194.00	1967.0
195.00	926.0
195.90	15565.0
196.90	2710.0
197.90	519936.0
198.90	36608.0
200.00	3413.0
201.40	2154.0
203.00	4211.0
204.00	24896.0
205.00	36504.0
206.00	154688.0
207.00	25584.0
208.00	6669.0
208.90	2440.0
209.90	2718.0
211.00	6962.0
211.70	1048.0
213.00	323.0
213.80	256.0
214.90	2131.0
216.00	3317.0
217.00	43056.0
218.00	5633.0
219.00	667.0
220.90	16968.0
221.90	5711.0
223.00	9283.0
224.00	86896.0
225.00	21960.0
226.00	2548.0
226.90	41512.0
227.90	5758.0
229.00	6755.0
230.00	1098.0
231.00	3096.0
232.00	407.0

Instrument :

BNA\_N

ClientSampleId :

DFTPP344



233.00	730.0
234.00	2415.0
235.00	2733.0
236.00	1867.0
236.90	3207.0
238.00	423.0
238.90	1864.0
240.00	1577.0
241.00	2217.0
242.00	4812.0
243.00	4845.0
244.00	58816.0
245.00	8667.0
245.90	14060.0
247.00	3232.0
247.90	673.0
249.00	2350.0
250.00	422.0
251.00	561.0
252.00	486.0
253.00	1337.0
254.00	2139.0
255.00	333056.0
256.00	43248.0
257.00	4145.0
258.00	21792.0
259.00	3214.0
260.00	629.0
261.00	557.0
263.00	273.0
263.90	478.0
264.90	8765.0
265.90	1517.0
267.00	313.0
267.90	235.0
269.90	305.0
270.90	693.0
271.90	927.0
273.00	9160.0
273.90	22712.0
275.00	145728.0
276.00	17704.0
277.00	12682.0
278.00	2419.0
279.00	557.0
281.00	1282.0
281.90	581.0
282.90	1594.0
284.00	1182.0
285.00	2146.0
285.90	344.0
287.80	177.0
288.90	488.0
289.90	539.0
291.00	313.0
292.00	437.0
292.90	2767.0
293.90	852.0
295.00	810.0
296.00	45872.0
296.90	6360.0
297.90	452.0
301.00	758.0
301.90	738.0
303.00	5341.0
304.00	1139.0
304.90	328.0
308.00	661.0
308.90	341.0
309.90	655.0
312.80	443.0
313.90	2206.0
314.90	5114.0
316.00	2630.0
316.90	384.0
321.00	1458.0
322.00	696.0
323.00	11871.0
324.00	2541.0
324.90	348.0
325.90	330.0
326.80	2993.0
327.90	1258.0
328.90	366.0
332.00	1075.0
333.00	1373.0
334.00	9144.0
335.00	2010.0
339.00	210.0
341.00	1734.0
341.90	575.0
345.90	3002.0
346.80	766.0
349.90	164.0
350.90	347.0
352.00	4140.0

Instrument :  
BNA\_N  
ClientSampleId :  
DFTPP344

353.00	2824.0
354.00	3823.0
354.90	1029.0
358.90	282.0
364.90	22072.0
365.90	3057.0
367.10	160.0
369.90	421.0
371.00	891.0
371.90	6786.0
372.90	1769.0
382.90	2121.0
384.00	814.0
384.90	234.0
389.90	1075.0
390.90	596.0
391.90	310.0
400.70	405.0
402.00	2138.0
403.00	3580.0
404.00	1639.0
404.80	310.0
414.90	164.0
420.90	3409.0
422.00	3321.0
423.10	22872.0
424.00	5826.0
424.90	538.0
440.10	287.0
441.00	73744.0
442.00	483072.0
443.00	97544.0
444.00	6718.0
444.90	497.0

**Instrument :**

BNA\_N

**ClientSampleId :**

DFTPP344

m/z	Abundance
35.90	240.0
37.00	683.0
38.00	1628.0
39.00	8869.0
40.00	1194.0
41.00	426.0
42.10	170.0
43.10	395.0
44.00	2084.0
45.00	442.0
49.00	1060.0
50.00	32840.0
51.00	120832.0
52.00	5986.0
53.00	320.0
54.90	690.0
56.00	3330.0
56.90	8241.0
57.90	342.0
59.00	223.0
60.00	234.0
61.00	1888.0
62.00	1875.0
63.00	4965.0
64.00	688.0
65.00	2175.0
66.00	185.0
67.00	395.0
68.00	1981.0
69.00	132160.0
70.00	789.0
70.80	207.0
72.10	160.0
73.00	2348.0
74.00	14991.0
75.00	22792.0
76.00	7208.0
77.00	152256.0
78.00	10451.0
79.00	10080.0
80.00	8144.0
80.90	11377.0
82.00	2749.0
83.00	2505.0
83.90	386.0
84.90	2108.0
86.00	3490.0
87.00	1614.0
87.90	699.0
88.90	415.0
90.90	2588.0
92.00	2591.0
92.90	20744.0
93.90	1222.0
95.00	326.0
96.00	973.0
97.00	445.0
98.00	16259.0
99.00	11741.0
100.00	785.0
100.90	5594.0
101.90	276.0
102.90	2252.0
103.90	3717.0
105.00	4324.0
106.00	1164.0
107.00	47328.0
108.00	6775.0
109.00	1224.0
110.00	76656.0
111.00	11830.0
112.00	1635.0
113.00	557.0
114.90	330.0
116.00	2646.0
116.90	54232.0
118.00	4009.0
118.90	691.0
120.00	582.0
121.00	262.0
121.90	3332.0
122.90	5403.0
124.00	2710.0
124.90	1962.0
126.00	488.0
127.00	150592.0
128.00	10403.0
129.00	64256.0
130.00	5460.0
130.90	1151.0
131.90	462.0
133.00	565.0

**Instrument :**  
BNA\_N  
**ClientSampleId :**  
DFTPP344

134.00	2035.0
135.00	5805.0
135.90	2205.0
136.90	3359.0
137.90	823.0
138.80	238.0
140.10	898.0
141.00	8835.0
142.00	3014.0
142.90	2084.0
143.90	634.0
145.00	430.0
146.00	1952.0
146.90	4531.0
148.00	14078.0
149.00	2655.0
149.90	749.0
151.00	963.0
151.80	653.0
152.90	2750.0
153.90	2090.0
155.00	5069.0
156.00	7229.0
157.00	1235.0
157.90	1737.0
158.90	1451.0
159.90	2462.0
160.90	4266.0
161.90	1295.0
162.80	356.0
163.70	309.0
165.00	3559.0
166.00	2283.0
167.00	21384.0
168.00	11115.0
169.00	1878.0
170.00	521.0
170.90	594.0
171.90	1734.0
173.00	2380.0
174.00	3807.0
175.00	7499.0
176.00	1834.0
176.90	4213.0
177.90	963.0
179.00	15342.0
180.00	8835.0
181.00	4780.0
181.90	838.0
182.80	344.0
184.00	1291.0
185.00	6079.0
186.00	46928.0
187.00	13722.0
188.00	2246.0
188.90	3844.0
189.80	583.0
190.90	2124.0
192.00	4617.0
193.00	6189.0
194.00	1282.0
194.90	605.0
196.00	9521.0
196.70	1223.0
197.90	324224.0
198.90	21888.0
200.00	1599.0
201.40	1192.0
202.90	3266.0
204.00	13226.0
205.00	23552.0
206.00	98936.0
207.00	17240.0
208.00	4961.0
209.00	1871.0
209.90	1507.0
211.00	3665.0
211.80	685.0
212.90	394.0
215.00	1019.0
216.00	2271.0
217.00	27696.0
218.00	4147.0
218.80	297.0
220.20	614.0
221.00	11476.0
222.00	3182.0
223.00	6199.0
224.00	54136.0
225.00	14119.0
226.00	1597.0
227.00	25232.0
228.00	3266.0
229.00	5403.0
229.80	800.0
231.00	1958.0

Instrument :

BNA\_N

ClientSampleId :

DFTPP344

231.90	418.0
232.90	462.0
234.00	1537.0
234.90	2174.0
235.90	1141.0
236.90	2309.0
237.90	410.0
238.90	1127.0
240.00	866.0
241.00	1384.0
242.00	3088.0
243.00	2939.0
244.00	40320.0
245.00	4771.0
245.90	10218.0
247.00	2085.0
247.90	400.0
248.90	1665.0
249.80	278.0
250.80	356.0
252.00	424.0
252.90	939.0
254.00	1166.0
255.00	222016.0
256.00	30664.0
257.00	2668.0
257.90	15714.0
258.90	2865.0
260.00	401.0
260.90	396.0
263.90	486.0
265.00	6068.0
265.90	921.0
266.90	331.0
270.00	264.0
270.90	412.0
271.90	474.0
273.00	6563.0
274.00	17616.0
275.00	82672.0
276.00	11317.0
277.00	9220.0
278.00	1524.0
278.90	378.0
281.00	1139.0
282.00	433.0
283.00	1030.0
284.00	675.0
285.00	1663.0
285.90	341.0
288.90	427.0
289.90	424.0
290.90	169.0
292.00	491.0
293.00	2236.0
294.00	667.0
294.90	572.0
295.90	31976.0
297.00	4268.0
297.90	428.0
300.90	299.0
301.90	455.0
303.00	3862.0
304.00	1277.0
304.90	206.0
308.00	322.0
309.00	387.0
309.90	290.0
314.00	1632.0
314.90	3727.0
316.00	1977.0
316.80	367.0
320.90	890.0
321.90	423.0
323.00	8705.0
323.90	1610.0
324.80	157.0
326.00	173.0
326.90	2036.0
327.80	872.0
331.90	741.0
332.90	698.0
334.00	5292.0
334.90	1592.0
335.90	179.0
338.80	189.0
339.90	208.0
341.00	1474.0
342.00	265.0
345.80	1629.0
346.90	503.0
351.10	162.0
351.90	2963.0
353.00	2237.0
354.00	2601.0
355.00	1066.0

Instrument :  
BNA\_N  
ClientSampleId :  
DFTPP344

359.00	164.0
364.90	14760.0
365.90	2044.0
366.80	194.0
369.80	283.0
370.80	680.0
372.00	4841.0
372.90	1536.0
376.90	200.0
382.90	1221.0
384.00	346.0
390.00	637.0
390.90	393.0
391.80	355.0
400.90	327.0
401.90	1666.0
403.00	2529.0
403.90	1090.0
414.90	221.0
421.00	2755.0
422.00	2300.0
423.00	18352.0
424.00	3870.0
425.00	471.0
441.00	58112.0
442.00	391360.0
443.00	73432.0
444.00	5663.0
444.90	342.0

**Instrument :**  
BNA\_N  
**ClientSampleId :**  
DFTPP344