

Data Path : Z:\SVOASRV\HPCHEM1\BNA_N\DATA\BN070518\
 Data File : BN001972.D
 Acq On : 05 Jul 2018 17:55
 Operator : JU/SJ
 Sample : J3776-06
 Misc :
 ALS Vial : 14 Sample Multiplier: 1

Instrument :
 BNA_N
 ClientSampleId :
 DAZR2

Integration Parameters: LSCINT.P

Integrator: RTE
 Smoothing : OFF Filtering: 5
 Sampling : 1 Min Area: 0.1 % of largest Peak
 Start Thrs: 0.2 Max Peaks: 100
 Stop Thrs : 0 Peak Location: TOP

If leading or trailing edge < 100 prefer < Baseline drop else tangent >
 Peak separation: 5

Method : Z:\SVOASRV\HPCHEM1\BNA_N\METHODS\SOM-EPA-BN061918.M
 Title : SVOA CALIBRATION

Signal : TIC

peak #	R.T. min	first scan	max scan	last scan	PK TY	peak height	corr. area	corr. % max.	% of total
1	3.023	3	6	22	rVB	1523173	2180278	13.95%	1.449%
2	3.270	44	48	60	rVB	137358	204635	1.31%	0.136%
3	3.887	151	153	158	rVB3	11327	16195	0.10%	0.011%
4	4.493	252	256	264	rVB6	21514	41240	0.26%	0.027%
5	6.881	655	662	672	rBV	605897	983411	6.29%	0.653%
6	7.052	683	691	703	rBV	2253250	3497910	22.38%	2.324%
7	7.246	715	724	735	rBV	2327647	3695043	23.64%	2.455%
8	7.711	795	803	811	rBV	2161480	3491334	22.34%	2.320%
9	8.022	851	856	862	rBV2	8656	16166	0.10%	0.011%
10	8.411	909	922	934	rBV	1786864	2944233	18.84%	1.956%
11	8.858	990	998	1011	rBV	2778886	4684118	29.97%	3.112%
12	9.569	1111	1119	1128	rBV	2411263	3882664	24.84%	2.580%
13	10.105	1202	1210	1228	rBV	3612766	5979761	38.26%	3.973%
14	10.481	1266	1274	1285	rVB	3229720	5481521	35.07%	3.642%
15	10.622	1290	1298	1306	rBV	131308	243656	1.56%	0.162%
16	11.275	1401	1409	1415	rBV5	14807	29846	0.19%	0.020%
17	11.399	1426	1430	1439	rBV4	12572	30749	0.20%	0.020%
18	12.075	1538	1545	1552	rVB	64407	111226	0.71%	0.074%
19	12.951	1688	1694	1699	rBV3	19512	28358	0.18%	0.019%
20	13.304	1750	1754	1760	rVB3	36779	49887	0.32%	0.033%
21	13.751	1823	1830	1845	rBV	6805480	9224460	59.02%	6.129%
22	14.028	1867	1877	1889	rBV	7447362	11002443	70.39%	7.311%
23	14.340	1922	1930	1942	rBV2	4762922	7529875	48.17%	5.003%
24	14.540	1958	1964	1980	rBV	493595	802361	5.13%	0.533%
25	14.704	1988	1992	1998	rVB3	9009	17476	0.11%	0.012%
26	14.763	1998	2002	2010	rBV6	17809	34372	0.22%	0.023%
27	15.087	2052	2057	2062	rVB	45384	59015	0.38%	0.039%
28	15.169	2065	2071	2076	rVB3	23945	36320	0.23%	0.024%
29	15.334	2092	2099	2110	rBV	9691962	13845956	88.58%	9.200%
30	15.451	2112	2119	2132	rVV	3155461	4285858	27.42%	2.848%
31	15.575	2135	2140	2149	rVB	117309	187588	1.20%	0.125%
32	15.704	2158	2162	2168	rVB7	9009	17981	0.12%	0.012%
33	15.998	2206	2212	2223	rBV5	60620	152767	0.98%	0.102%
34	16.116	2229	2232	2239	rVB7	16024	28455	0.18%	0.019%

Data Path : Z:\SVOASRV\HPCHEM1\BNA_N\DATA\BN070518\
 Data File : BN001972.D
 Acq On : 05 Jul 2018 17:55
 Operator : JU/SJ
 Sample : J3776-06
 Misc :
 ALS Vial : 14 Sample Multiplier: 1

Instrument :
 BNA_N
 ClientSampleId :
 DAZR2

Integration Parameters: LSCINT.P
 Integrator: RTE
 Smoothing : OFF
 Sampling : 1
 Start Thrs: 0.2
 Stop Thrs : 0

Filtering: 5
 Min Area: 0.1 % of largest Peak
 Max Peaks: 100
 Peak Location: TOP

If leading or trailing edge < 100 prefer < Baseline drop else tangent >
 Peak separation: 5

Method : Z:\SVOASRV\HPCHEM1\BNA_N\METHODS\SOM-EPA-BN061918.M
 Title : SVOA CALIBRATION

35	16.869	2355	2360	2365	rBV3	28607	44185	0.28%	0.029%
36	17.081	2390	2396	2404	rVB2	5775171	8371271	53.56%	5.562%
37	17.181	2406	2413	2422	rBV2	10206424	14682037	93.93%	9.756%
38	17.322	2433	2437	2442	rVB	32333	46287	0.30%	0.031%
39	17.381	2444	2447	2450	rVB2	17519	18774	0.12%	0.012%
40	17.457	2455	2460	2464	rBV4	16724	28504	0.18%	0.019%
41	17.763	2508	2512	2517	rBV7	11003	15964	0.10%	0.011%
42	17.987	2546	2550	2558	rBV	71073	121332	0.78%	0.081%
43	18.081	2562	2566	2576	rVB3	58874	123433	0.79%	0.082%
44	18.316	2602	2606	2608	rVB5	14242	16619	0.11%	0.011%
45	18.463	2629	2631	2635	rVB5	20135	27491	0.18%	0.018%
46	19.110	2737	2741	2747	rBV	135097	196639	1.26%	0.131%
47	19.275	2765	2769	2778	rBV5	92251	160234	1.03%	0.106%
48	19.369	2780	2785	2791	rVB	104347	160712	1.03%	0.107%
49	19.481	2798	2804	2813	rBV	11452838	15630365	100.00%	10.386%
50	19.716	2841	2844	2848	rBV3	34944	48119	0.31%	0.032%
51	21.280	3104	3110	3116	rBV	5981321	7577250	48.48%	5.035%
52	23.369	3458	3465	3472	rBV	6502992	11838787	75.74%	7.866%
53	23.510	3482	3489	3502	rVB	3524888	6571195	42.04%	4.366%

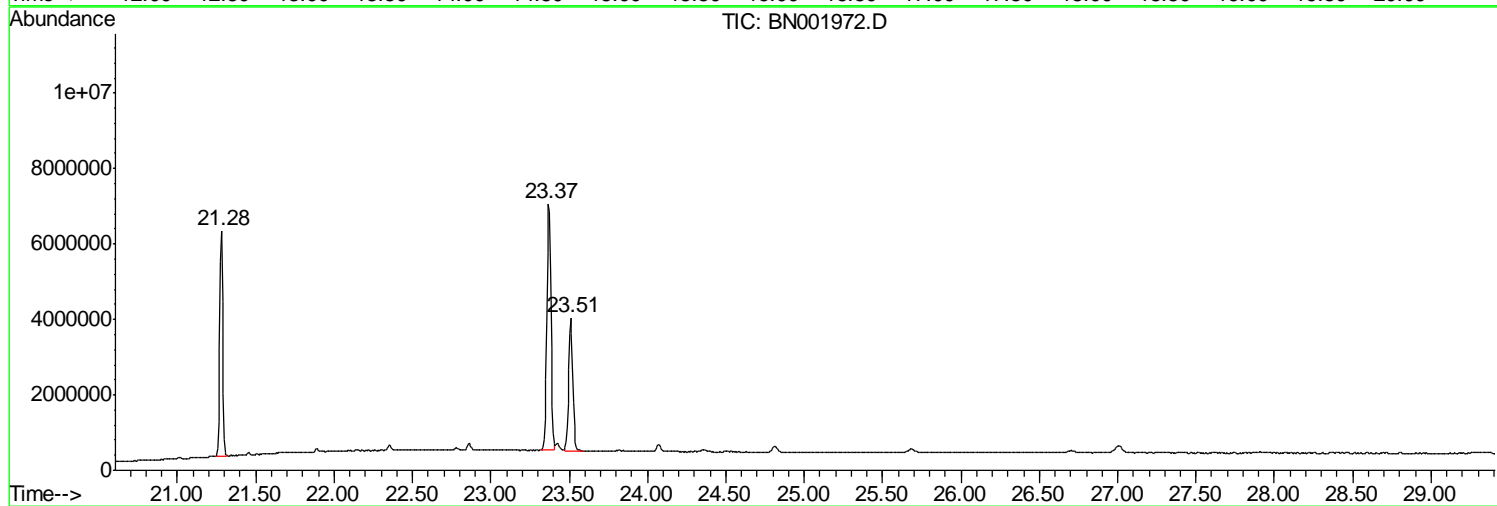
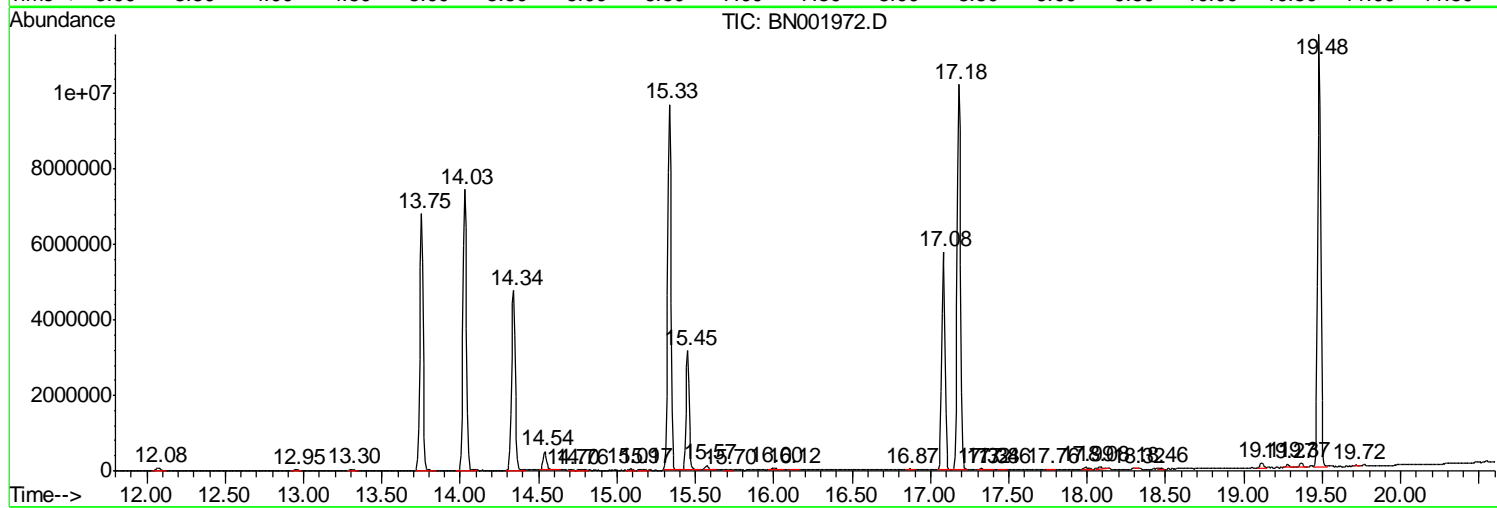
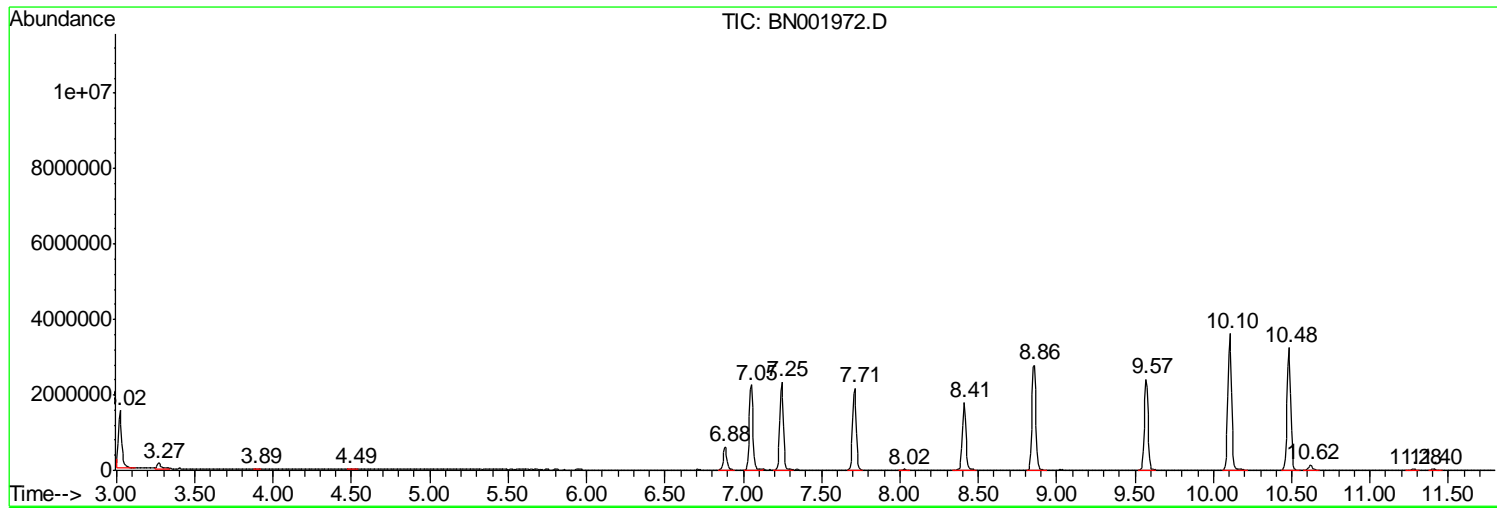
Sum of corrected areas: 150496356

Data Path : Z:\SVOASRV\HPCHEM1\BNA_N\DATA\BN070518\
 Data File : BN001972.D
 Acq On : 05 Jul 2018 17:55
 Operator : JU/SJ
 Sample : J3776-06
 Misc :
 ALS Vial : 14 Sample Multiplier: 1

Instrument :
 BNA_N
 ClientSampled :
 DAZR2

Quant Method : Z:\SVOASRV\HPCHEM1\BNA_N\METHODS\SOM-EPA-BN061918.M
 Quant Title : SVOA CALIBRATION

TIC Library : C:\DATABASE\NIST02.L
 TIC Integration Parameters: LSCINT.P



Data Path : Z:\SVOASRV\HPCHEM1\BNA_N\DATA\BN070518\
 Data File : BN001972.D
 Acq On : 05 Jul 2018 17:55
 Operator : JU/SJ
 Sample : J3776-06
 Misc :
 ALS Vial : 14 Sample Multiplier: 1

Instrument :
 BNA_N
 ClientSampled :
 DAZR2

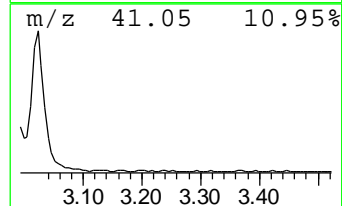
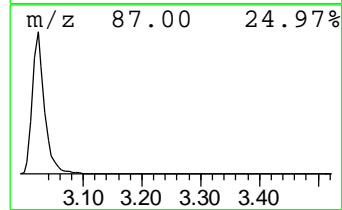
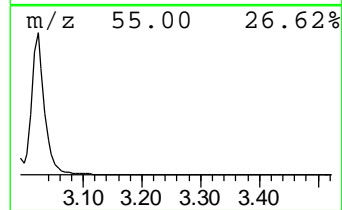
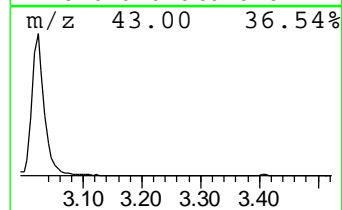
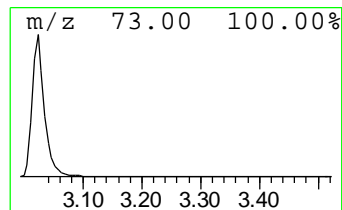
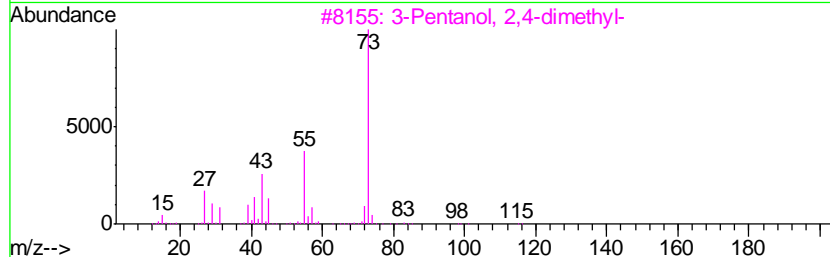
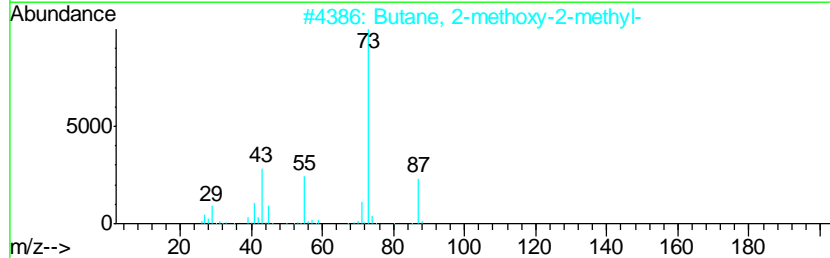
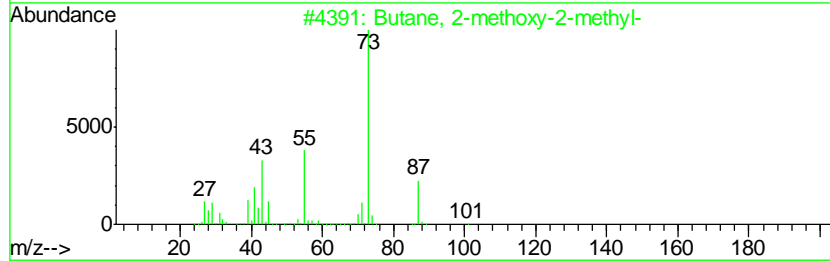
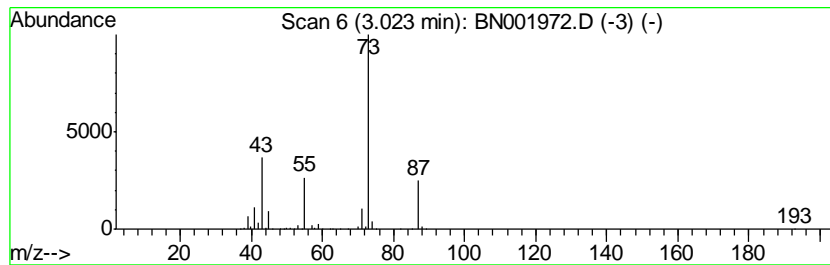
Quant Method : Z:\SVOASRV\HPCHEM1\BNA_N\METHODS\SOM-EPA-BN061918.M
 Quant Title : SVOA CALIBRATION

TIC Library : C:\DATABASE\NIST02.L
 TIC Integration Parameters: LSCINT.P

 Peak Number 1 Butane, 2-methoxy-2-methyl- Concentration Rank 1

R.T.	EstConc	Area	Relative to ISTD	R.T.
3.02	12.49 ng/ul	2180280	1,4-Dichlorobenzene-d4	7.71

Hit#	of	Tentative ID	MW	MolForm	CAS#	Qual
1	5	Butane, 2-methoxy-2-methyl-	102	C6H14O	000994-05-8	83
2		Butane, 2-methoxy-2-methyl-	102	C6H14O	000994-05-8	78
3		3-Pentanol, 2,4-dimethyl-	116	C7H16O	000600-36-2	37
4		1,3-Dioxolane, 2-methyl-	88	C4H8O2	000497-26-7	25
5		Pentane, 3-methoxy-	102	C6H14O	036839-67-5	17



Data Path : Z:\SVOASRV\HPCHEM1\BNA_N\DATA\BN070518\
Data File : BN001972.D
Acq On : 05 Jul 2018 17:55
Operator : JU/SJ
Sample : J3776-06
Misc :
ALS Vial : 14 Sample Multiplier: 1

Instrument :
BNA_N
ClientSampleId :
DAZR2

Quant Method : Z:\SVOASRV\HPCHEM1\BNA_N\METHODS\SOM-EPA-BN061918.M
Quant Title : SVOA CALIBRATION

TIC Library : C:\DATABASE\NIST02.L
TIC Integration Parameters: LSCINT.P

TIC Top Hit name	RT	EstConc	Units	Response	--Internal Standard--			
					#	RT	Resp	Conc
Butane, 2-methoxy...	3.02	12.5	ng/ul	2180280	1	7.71	3491330	20.0