

Data Path : Z:\svoasrv\HPCHEM1\BNA\_N\Data\BN072223\  
 Data File : BN026660.D  
 Acq On : 22 Jul 2023 18:33  
 Operator : MA/JU  
 Sample : 03504-15  
 Misc :  
 ALS Vial : 12 Sample Multiplier: 1

Instrument :  
 BNA\_N  
 ClientSampleId :  
 A46S1

Manual Integrations  
 APPROVED

Reviewed By :Yogesh Patel 07/24/2023  
 Supervised By :mohammad ahmed 07/24/2023

Quant Time: Jul 22 23:18:41 2023  
 Quant Method : Z:\SVOASRV\HPCHEM1\BNA\_N\METHODS\SFAM-EPA-SIM-BN071223.M  
 Quant Title : ASP BNA STANDARDS FOR 5 POINT CALIBRATION  
 QLast Update : Fri Jul 21 19:02:16 2023  
 Response via : Initial Calibration

Compound	R.T.	QIon	Response	Conc	Units	Dev(Min)	
Internal Standards							
1) 1,4-Dichlorobenzene-d4	7.823	152	5619	0.400	ng/ul	-0.03	
4) Naphthalene-d8	10.625	136	17486	0.400	ng/ul	#-0.02	
9) Acenaphthene-d10	14.467	164	8575	0.400	ng/ul	0.00	
13) Phenanthrene-d10	17.215	188	22224	0.400	ng/ul	# 0.00	
17) Chrysene-d12	21.411	240	12284	0.400	ng/ul	#-0.01	
23) Perylene-d12	23.781	264	13657	0.400	ng/ul	#-0.02	
System Monitoring Compounds							
3) 1,4-Dioxane-d8	3.199	96	10648	1.439	ng/ul	0.00	
6) 2-Methylnaphthalene-d10	12.220	152	6121	0.258	ng/ul	-0.02	
18) Fluoranthene-d10	19.246	212	11671	0.274	ng/ul	0.00	
Target Compounds							
							Qvalue
5) Naphthalene	10.674	128	12127	0.253	ng/ul		98
7) 2-Methylnaphthalene	12.297	142	2220	0.081	ng/ul		99
8) 1-Methylnaphthalene	12.511	142	2232	0.076	ng/ul		98
10) Acenaphthylene	14.189	152	96054	2.287	ng/ul		97
11) Acenaphthene	14.532	153	6406	0.200	ng/ul		99
12) Fluorene	15.517	166	34383	1.024	ng/ul		99
15) Phenanthrene	17.257	178	417422	5.898	ng/ul		97
16) Anthracene	17.350	178	145095	2.362	ng/ul		95
19) Fluoranthene	19.278	202	987867	17.157	ng/ul		98
20) Pyrene	19.641	202	295270	4.722	ng/ul		98
21) Benzo(a)anthracene	21.393	228	383399	8.493	ng/ul		100
22) Chrysene	21.446	228	297355	5.787	ng/ul		98
24) Benzo(b)fluoranthene	23.062	252	355721m	6.686	ng/ul		
25) Benzo(k)fluoranthene	23.103	252	151976m	2.725	ng/ul		
26) Benzo(a)pyrene	23.676	252	44323	0.936	ng/ul#		84
27) Indeno(1,2,3-cd)pyrene	26.234	276	58488	0.942	ng/ul#		97
28) Dibenzo(a,h)anthracene	26.244	278	43428	0.912	ng/ul		93
29) Benzo(g,h,i)perylene	26.995	276	1375	0.025	ng/ul#		1

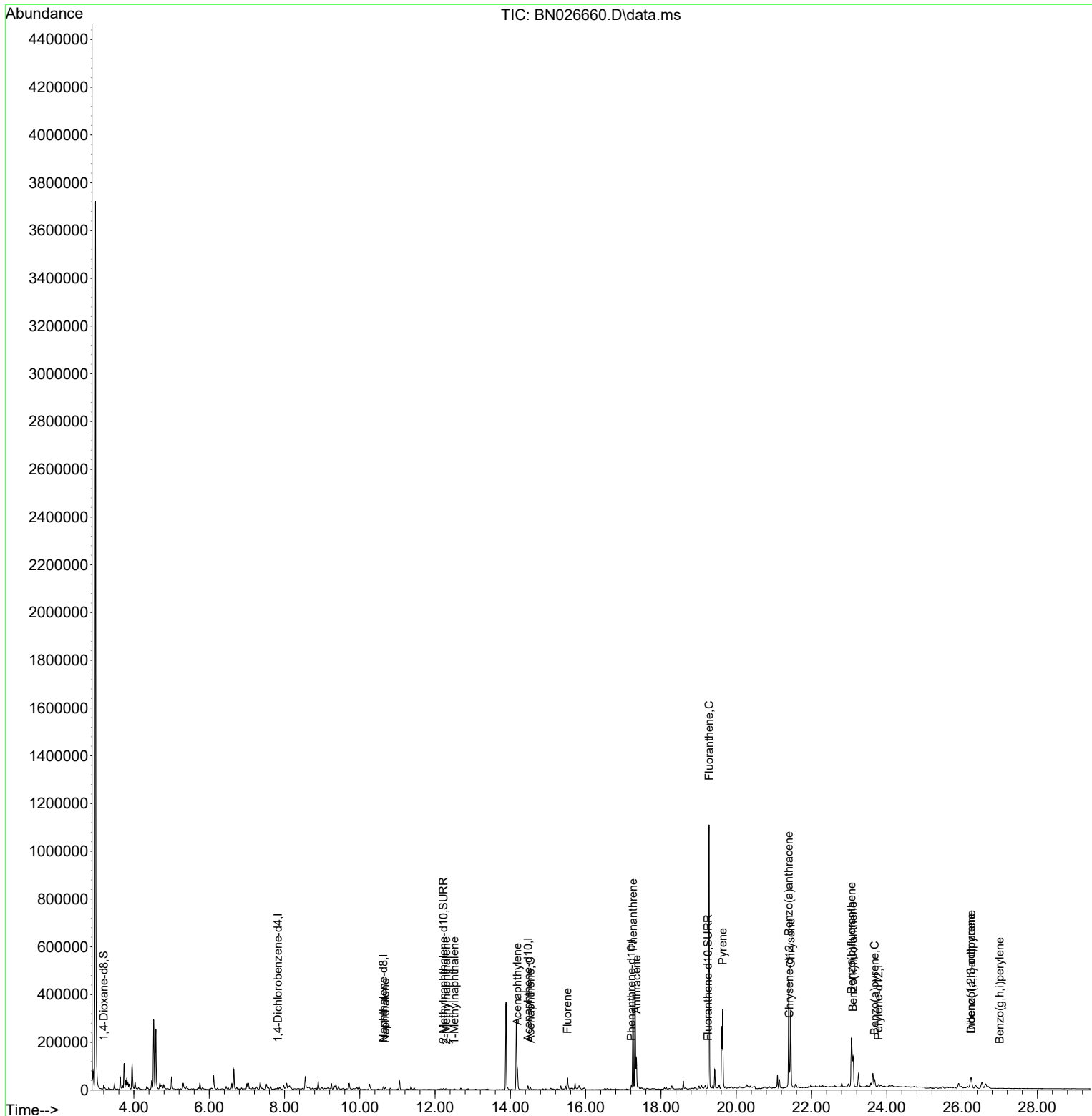
(#) = qualifier out of range (m) = manual integration (+) = signals summed

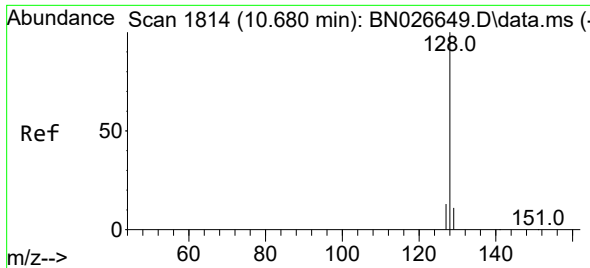
Data Path : Z:\svoasrv\HPCHEM1\BNA\_N\Data\BN072223\  
 Data File : BN026660.D  
 Acq On : 22 Jul 2023 18:33  
 Operator : MA/JU  
 Sample : 03504-15  
 Misc :  
 ALS Vial : 12 Sample Multiplier: 1

**Instrument :**  
 BNA\_N  
**ClientSampleId :**  
 A46S1

Quant Time: Jul 22 23:18:41 2023  
 Quant Method : Z:\SVOASRV\HPCHEM1\BNA\_N\METHODS\SFAM-EPA-SIM-BN071223.M  
 Quant Title : ASP BNA STANDARDS FOR 5 POINT CALIBRATION  
 QLast Update : Fri Jul 21 19:02:16 2023  
 Response via : Initial Calibration

**Manual Integrations**  
**APPROVED**  
 Reviewed By :Yogesh Patel 07/24/2023  
 Supervised By :mohammad ahmed 07/24/2023





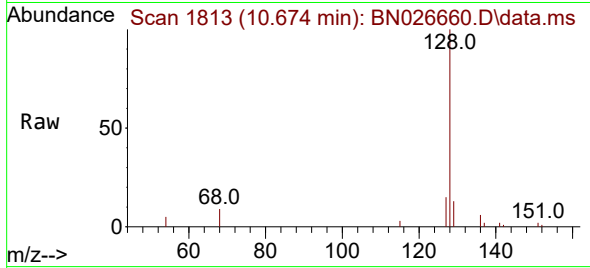
#5  
 Naphthalene  
 Concen: 0.253 ng/uI  
 RT: 10.674 min Scan# 1813  
 Delta R.T. -0.016 min  
 Lab File: BN026660.D  
 Acq: 22 Jul 2023 18:33

Instrument :

BNA\_N

ClientSampleId :

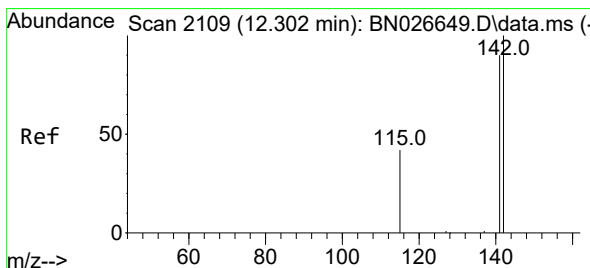
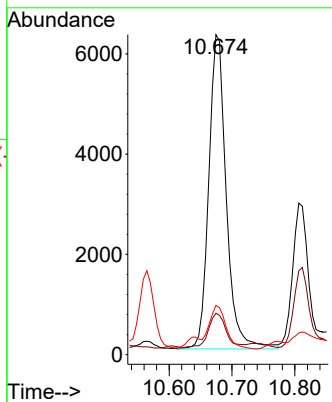
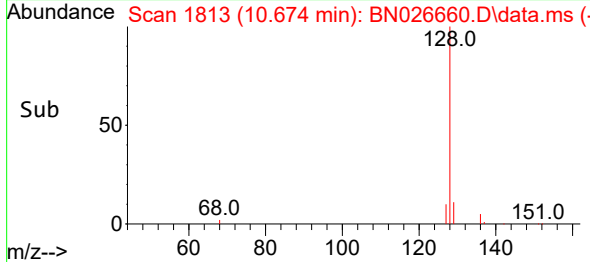
A46S1



Tgt Ion:128 Resp: 1212  
 Ion Ratio Lower Upper  
 128 100  
 129 12.9 10.2 15.2  
 127 15.4 11.4 17.0

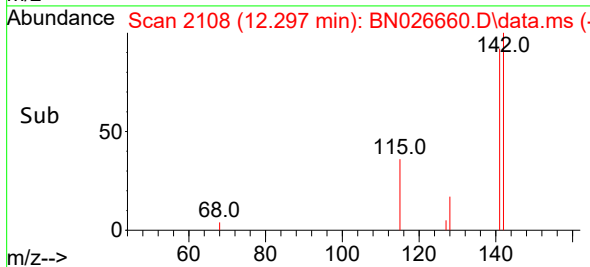
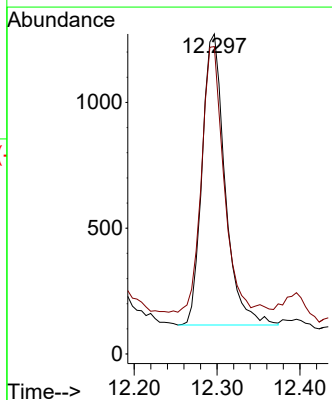
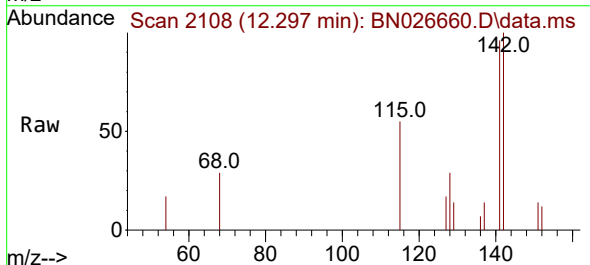
Manual Integrations  
 APPROVED

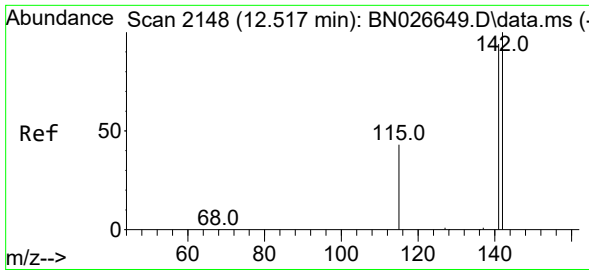
Reviewed By :Yogesh Patel 07/24/2023  
 Supervised By :mohammad ahmed 07/24/2023



#7  
 2-Methylnaphthalene  
 Concen: 0.081 ng/uI  
 RT: 12.297 min Scan# 2108  
 Delta R.T. -0.016 min  
 Lab File: BN026660.D  
 Acq: 22 Jul 2023 18:33

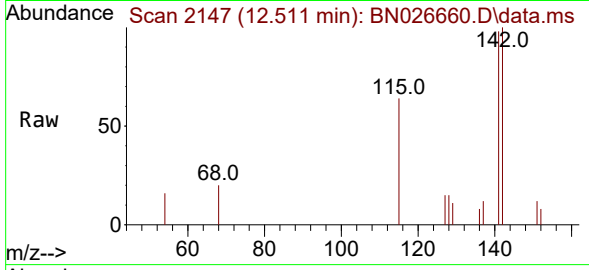
Tgt Ion:142 Resp: 2220  
 Ion Ratio Lower Upper  
 142 100  
 141 89.4 72.3 108.5





#8  
 1-Methylnaphthalene  
 Concen: 0.076 ng/ul  
 RT: 12.511 min Scan# 2147  
 Delta R.T. -0.011 min  
 Lab File: BN026660.D  
 Acq: 22 Jul 2023 18:33

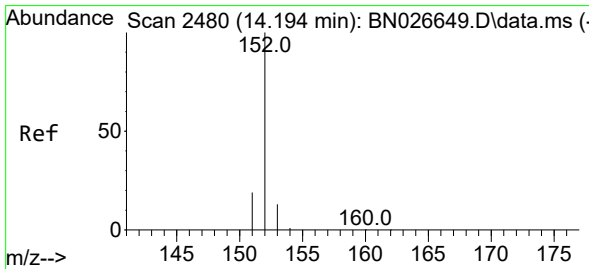
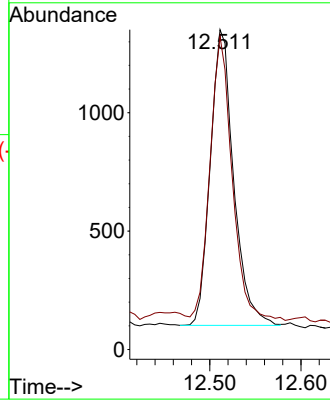
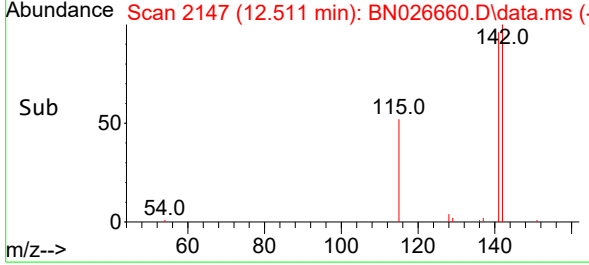
Instrument :  
 BNA\_N  
 ClientSampleId :  
 A46S1



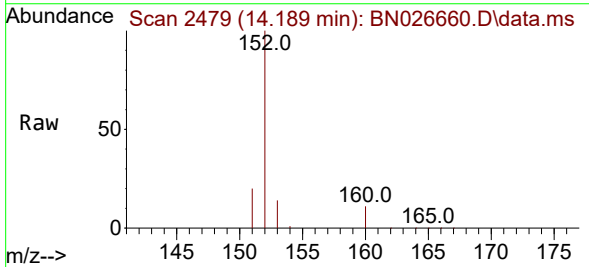
Tgt Ion:142 Resp: 223  
 Ion Ratio Lower Upper  
 142 100  
 141 91.1 74.5 111.7

Manual Integrations  
 APPROVED

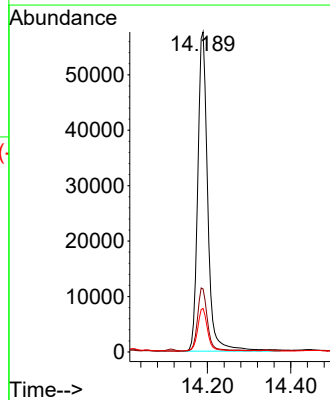
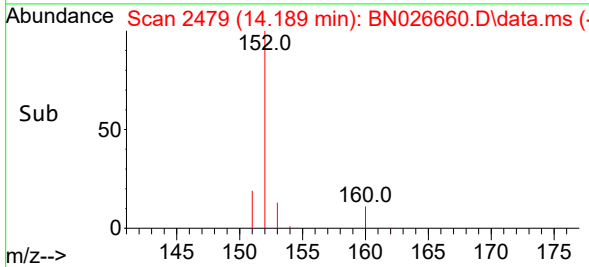
Reviewed By :Yogesh Patel 07/24/2023  
 Supervised By :mohammad ahmed 07/24/2023

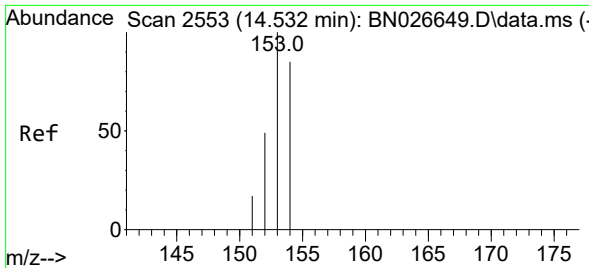


#10  
 Acenaphthylene  
 Concen: 2.287 ng/ul  
 RT: 14.189 min Scan# 2479  
 Delta R.T. -0.009 min  
 Lab File: BN026660.D  
 Acq: 22 Jul 2023 18:33



Tgt Ion:152 Resp: 96054  
 Ion Ratio Lower Upper  
 152 100  
 151 19.7 17.0 25.6  
 153 13.6 11.4 17.2





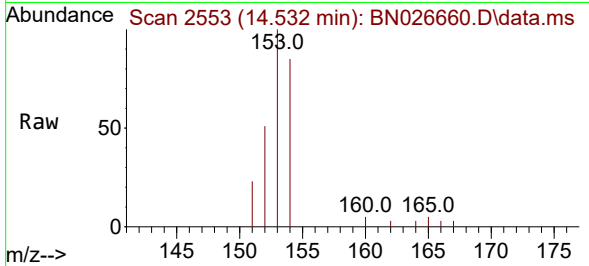
#11  
 Acenaphthene  
 Concen: 0.200 ng/u1  
 RT: 14.532 min Scan# 21  
 Delta R.T. -0.005 min  
 Lab File: BN026660.D  
 Acq: 22 Jul 2023 18:33

Instrument :

BNA\_N

ClientSampleId :

A46S1



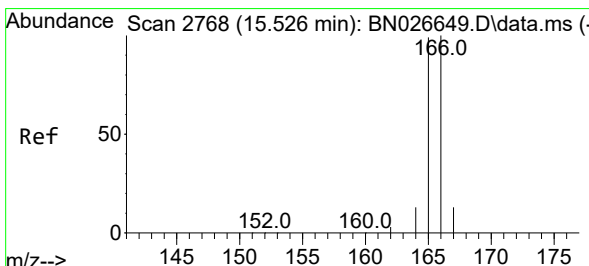
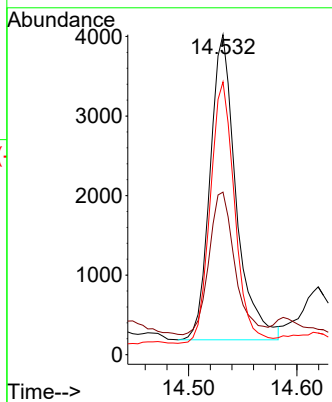
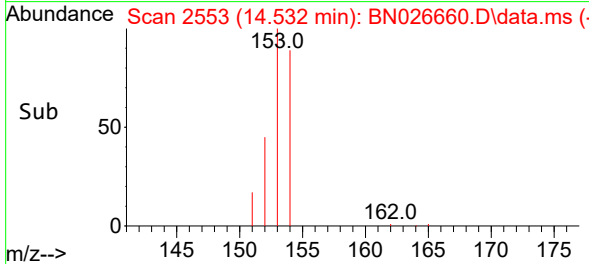
Tgt Ion:153 Resp: 6400  
 Ion Ratio Lower Upper  
 153 100  
 152 50.8 40.2 60.4  
 154 85.2 69.3 103.9

Manual Integrations

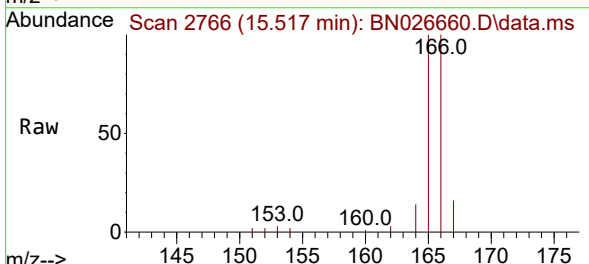
APPROVED

Reviewed By :Yogesh Patel 07/24/2023

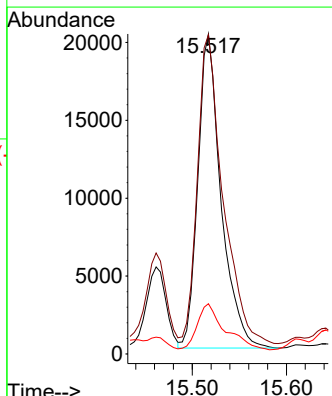
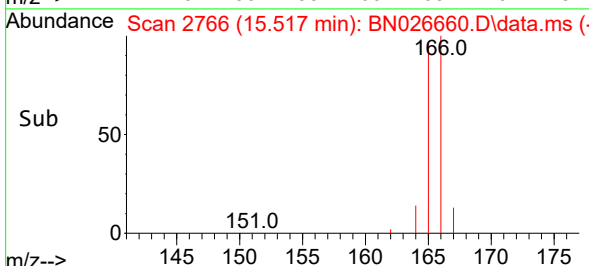
Supervised By :mohammad ahmed 07/24/2023

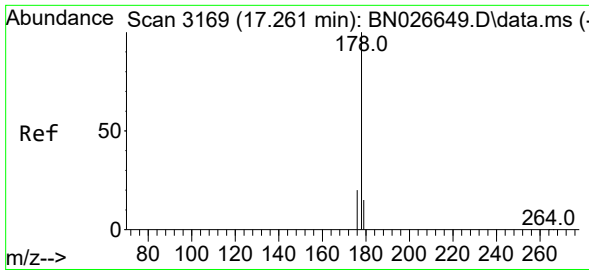


#12  
 Fluorene  
 Concen: 1.024 ng/u1  
 RT: 15.517 min Scan# 2766  
 Delta R.T. -0.014 min  
 Lab File: BN026660.D  
 Acq: 22 Jul 2023 18:33



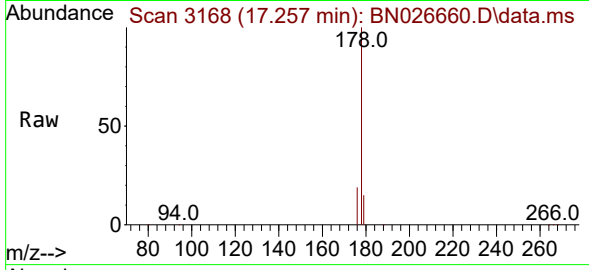
Tgt Ion:166 Resp: 34383  
 Ion Ratio Lower Upper  
 166 100  
 165 99.7 80.6 120.8  
 167 15.7 12.0 18.0





#15  
 Phenanthrene  
 Concen: 5.898 ng/u1  
 RT: 17.257 min Scan# 3168  
 Delta R.T. -0.008 min  
 Lab File: BN026660.D  
 Acq: 22 Jul 2023 18:33

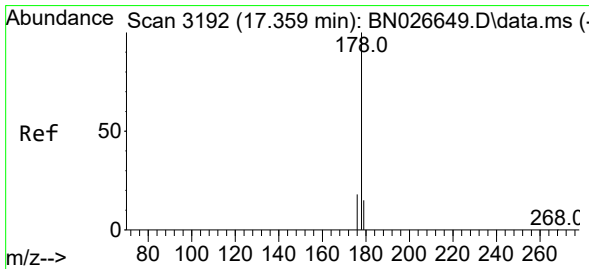
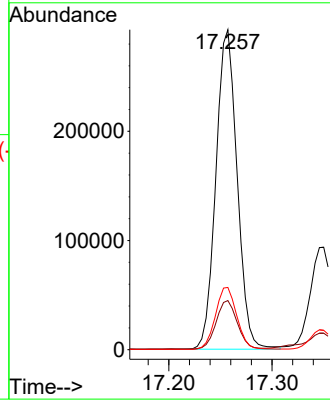
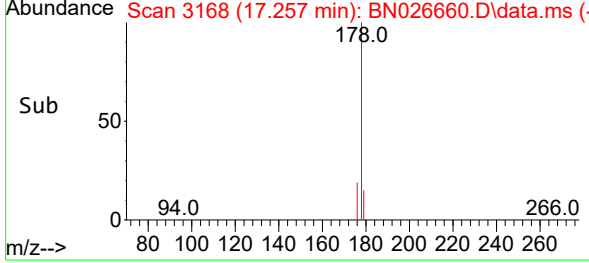
Instrument :  
 BNA\_N  
 ClientSampleId :  
 A46S1



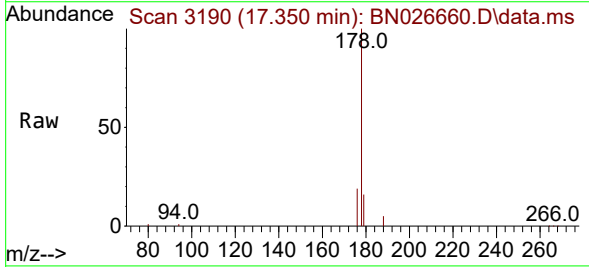
Tgt Ion:178 Resp: 41742  
 Ion Ratio Lower Upper  
 178 100  
 179 15.3 13.7 20.5  
 176 19.5 16.5 24.7

Manual Integrations  
 APPROVED

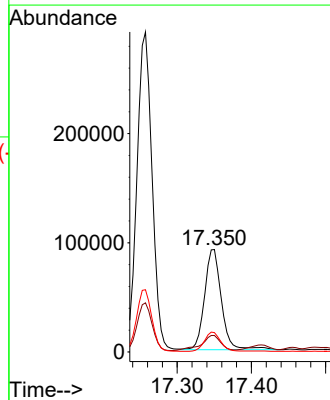
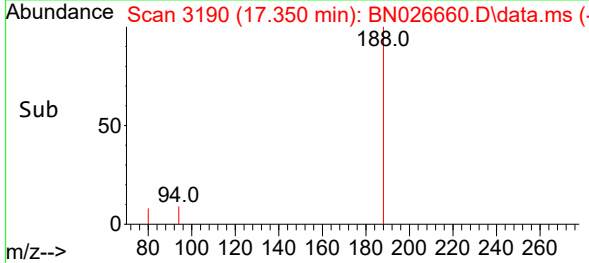
Reviewed By :Yogesh Patel 07/24/2023  
 Supervised By :mohammad ahmed 07/24/2023

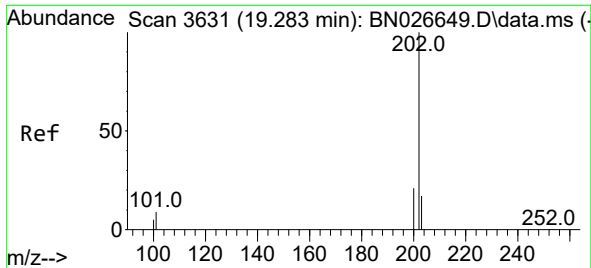


#16  
 Anthracene  
 Concen: 2.362 ng/u1  
 RT: 17.350 min Scan# 3190  
 Delta R.T. -0.013 min  
 Lab File: BN026660.D  
 Acq: 22 Jul 2023 18:33



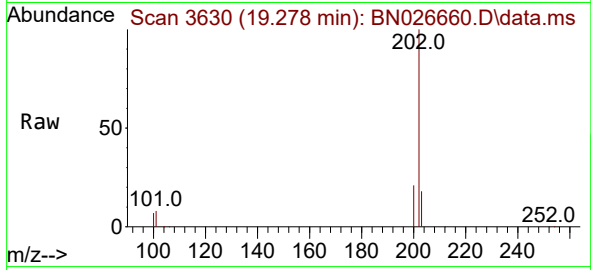
Tgt Ion:178 Resp: 145095  
 Ion Ratio Lower Upper  
 178 100  
 179 16.1 14.8 22.2  
 176 18.9 16.6 25.0





#19  
 Fluoranthene  
 Concen: 17.157 ng/uI  
 RT: 19.278 min Scan# 30  
 Delta R.T. -0.005 min  
 Lab File: BN026660.D  
 Acq: 22 Jul 2023 18:33

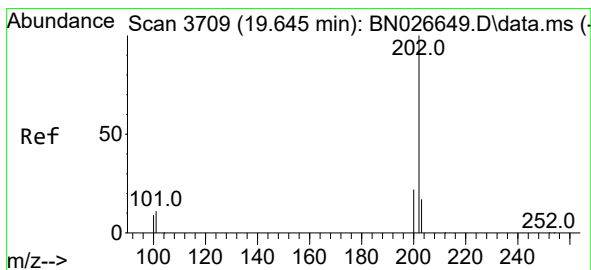
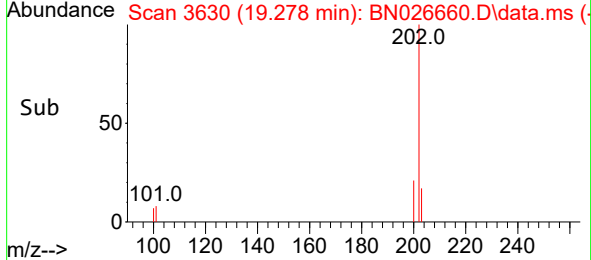
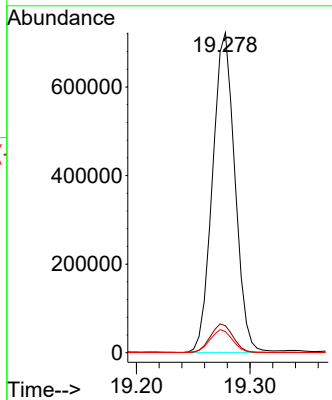
**Instrument :**  
 BNA\_N  
**Client SampleId :**  
 A46S1



Tgt Ion:202 Resp: 98786  
 Ion Ratio Lower Upper  
 202 100  
 101 8.5 7.0 10.4  
 100 6.6 6.0 9.0

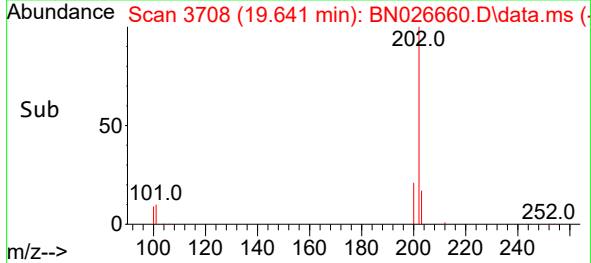
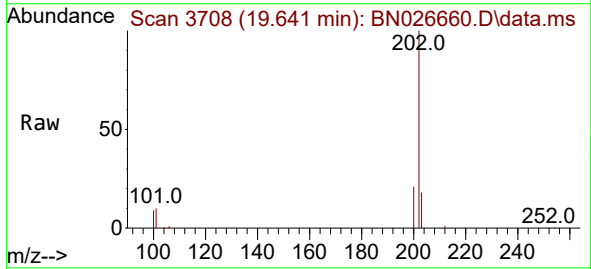
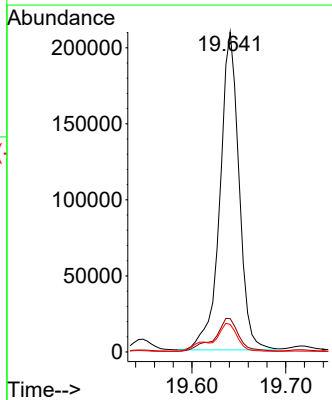
**Manual Integrations**  
**APPROVED**

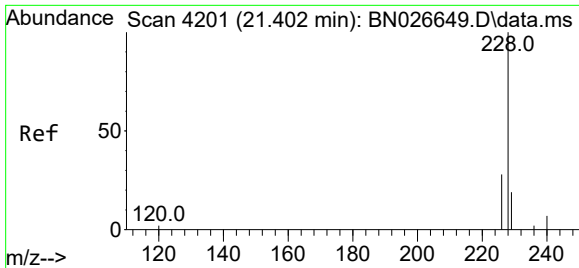
Reviewed By :Yogesh Patel 07/24/2023  
 Supervised By :mohammad ahmed 07/24/2023



#20  
 Pyrene  
 Concen: 4.722 ng/uI  
 RT: 19.641 min Scan# 3708  
 Delta R.T. -0.005 min  
 Lab File: BN026660.D  
 Acq: 22 Jul 2023 18:33

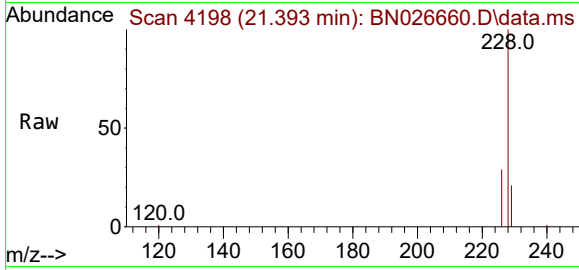
Tgt Ion:202 Resp: 295270  
 Ion Ratio Lower Upper  
 202 100  
 101 10.4 8.0 12.0  
 100 8.6 6.2 9.2





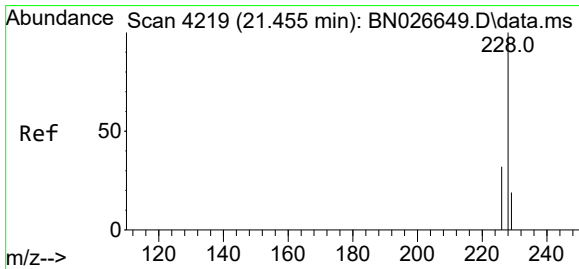
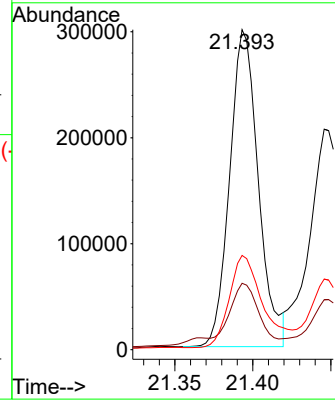
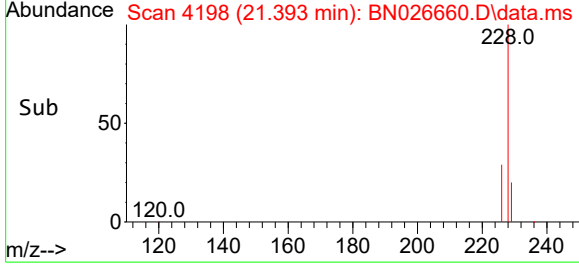
#21  
 Benzo(a)anthracene  
 Concen: 8.493 ng/uI  
 RT: 21.393 min Scan# 4198  
 Delta R.T. -0.017 min  
 Lab File: BN026660.D  
 Acq: 22 Jul 2023 18:33

Instrument : BNA\_N  
 ClientSampleId : A46S1

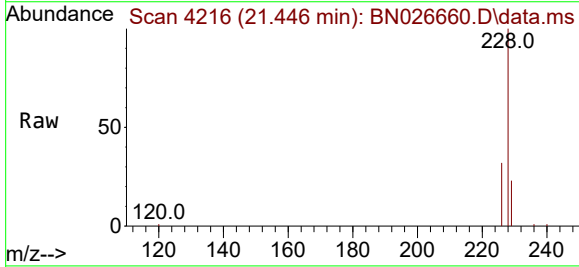


Tgt Ion:228 Resp: 383399  
 Ion Ratio Lower Upper  
 228 100  
 229 20.7 16.7 25.1  
 226 29.4 23.5 35.3

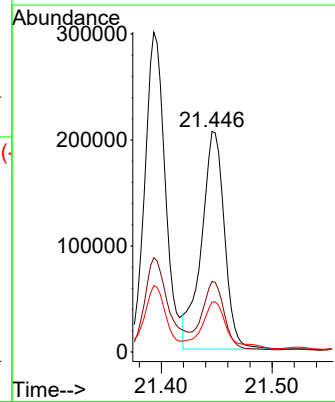
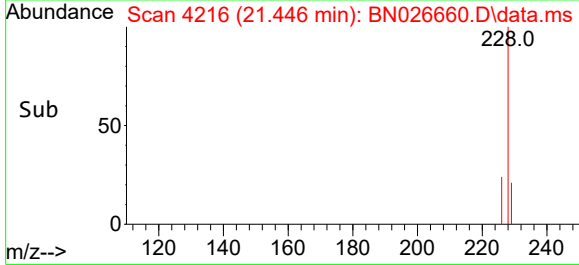
Manual Integrations  
**APPROVED**  
 Reviewed By :Yogesh Patel 07/24/2023  
 Supervised By :mohammad ahmed 07/24/2023



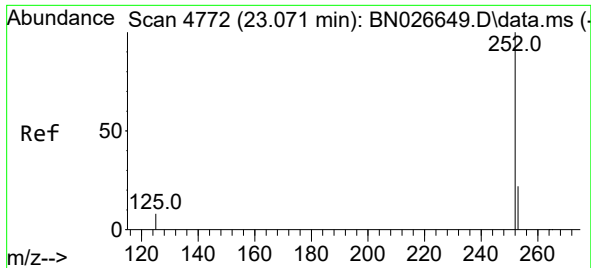
#22  
 Chrysene  
 Concen: 5.787 ng/uI  
 RT: 21.446 min Scan# 4216  
 Delta R.T. -0.017 min  
 Lab File: BN026660.D  
 Acq: 22 Jul 2023 18:33



Tgt Ion:228 Resp: 297355  
 Ion Ratio Lower Upper  
 228 100  
 226 32.0 25.2 37.8  
 229 22.7 16.4 24.6

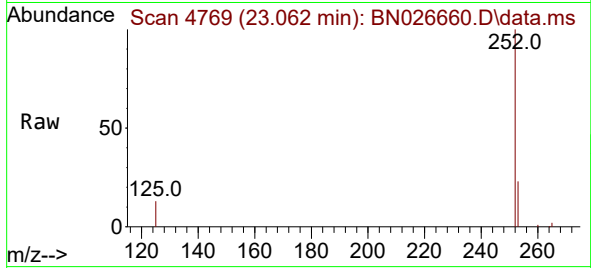






#24  
 Benzo(b)fluoranthene  
 Concen: 6.686 ng/ul m  
 RT: 23.062 min Scan# 4769  
 Delta R.T. -0.018 min  
 Lab File: BN026660.D  
 Acq: 22 Jul 2023 18:33

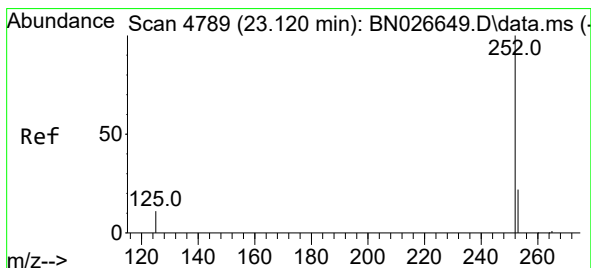
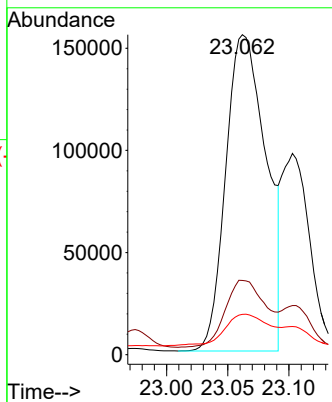
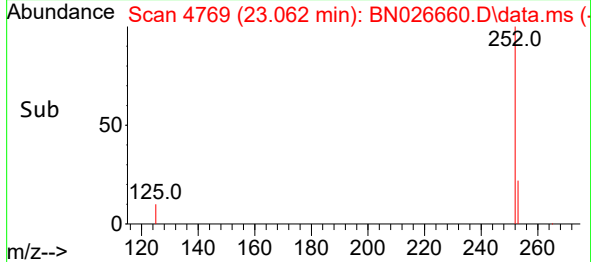
Instrument :  
 BNA\_N  
 ClientSampleId :  
 A46S1



Tgt Ion:252 Resp: 35572  
 Ion Ratio Lower Upper  
 252 100  
 253 23.2 0.0 68.6  
 125 12.6 0.0 34.0

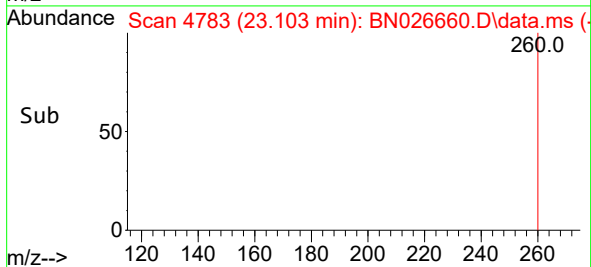
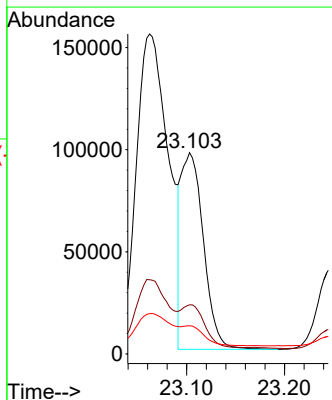
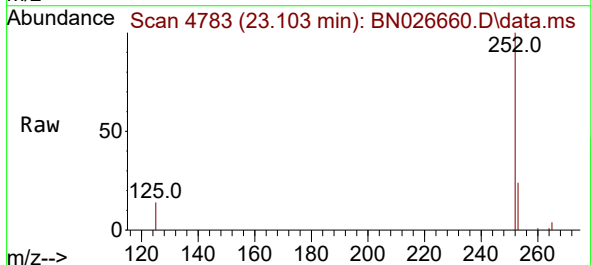
Manual Integrations  
 APPROVED

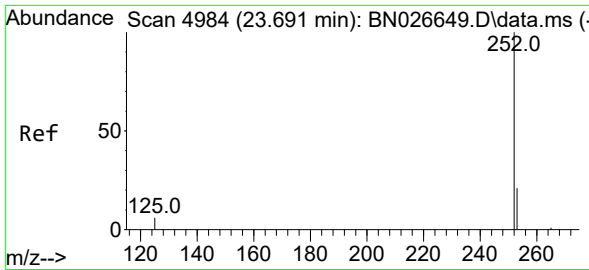
Reviewed By :Yogesh Patel 07/24/2023  
 Supervised By :mohammad ahmed 07/24/2023



#25  
 Benzo(k)fluoranthene  
 Concen: 2.725 ng/ul m  
 RT: 23.103 min Scan# 4783  
 Delta R.T. -0.026 min  
 Lab File: BN026660.D  
 Acq: 22 Jul 2023 18:33

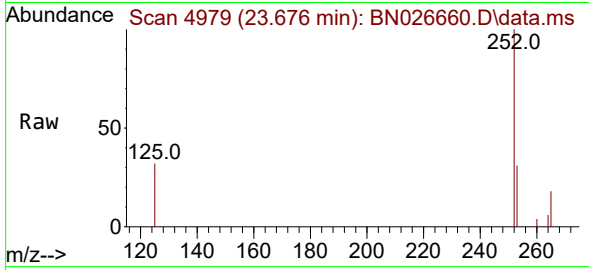
Tgt Ion:252 Resp: 151976  
 Ion Ratio Lower Upper  
 252 100  
 253 24.4 27.2 40.8#  
 125 14.0 13.4 20.2





#26  
 Benzo(a)pyrene  
 Concen: 0.936 ng/u1  
 RT: 23.676 min Scan# 4984  
 Delta R.T. -0.020 min  
 Lab File: BN026660.D  
 Acq: 22 Jul 2023 18:33

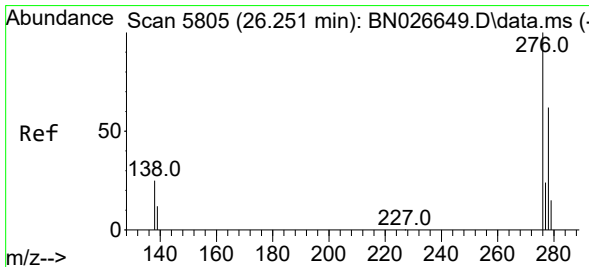
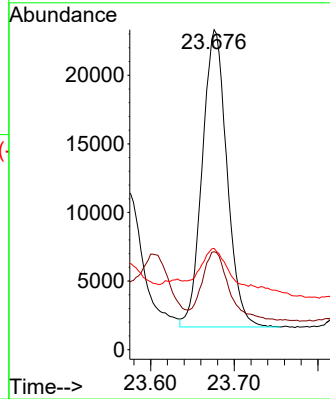
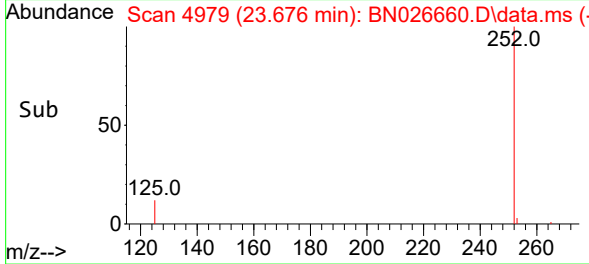
Instrument :  
 BNA\_N  
 ClientSampleId :  
 A46S1



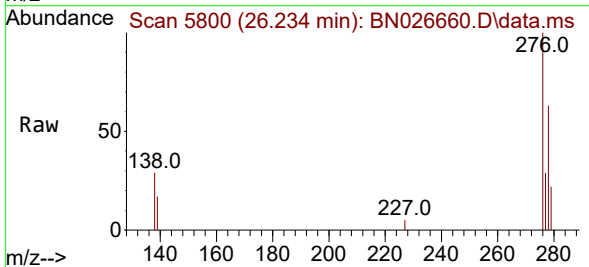
Tgt Ion:252 Resp: 4432  
 Ion Ratio Lower Upper  
 252 100  
 253 30.6 32.6 49.0  
 125 31.6 19.3 28.9

Manual Integrations  
 APPROVED

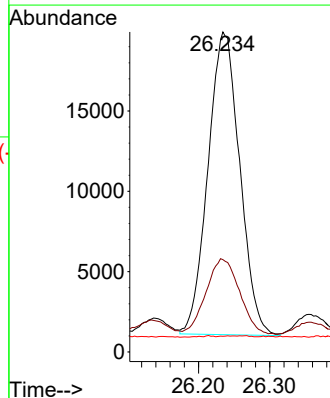
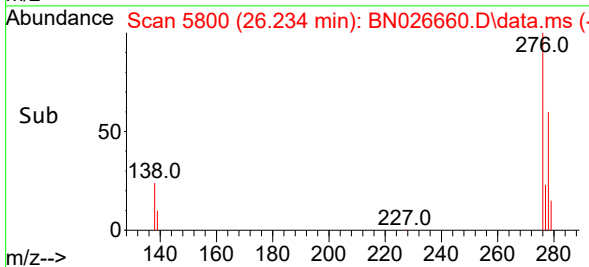
Reviewed By :Yogesh Patel 07/24/2023  
 Supervised By :mohammad ahmed 07/24/2023

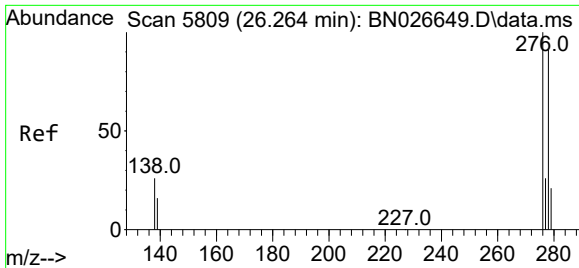


#27  
 Indeno(1,2,3-cd)pyrene  
 Concen: 0.942 ng/u1  
 RT: 26.234 min Scan# 5800  
 Delta R.T. -0.023 min  
 Lab File: BN026660.D  
 Acq: 22 Jul 2023 18:33



Tgt Ion:276 Resp: 58488  
 Ion Ratio Lower Upper  
 276 100  
 138 26.3 22.2 33.4  
 227 0.0 0.1 0.1





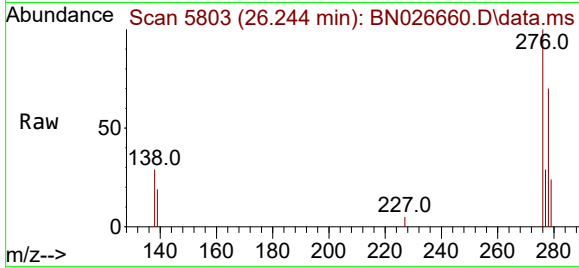
#28  
 Dibenzo(a,h)anthracene  
 Concen: 0.912 ng/ul  
 RT: 26.244 min Scan# 5803  
 Delta R.T. -0.030 min  
 Lab File: BN026660.D  
 Acq: 22 Jul 2023 18:33

Instrument :

BNA\_N

ClientSampleId :

A46S1

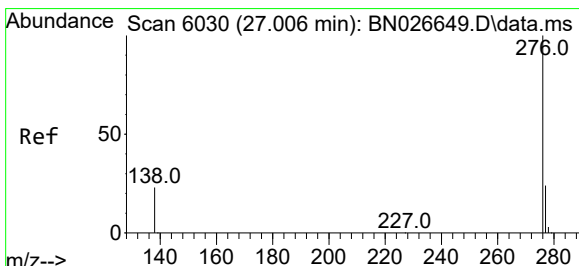
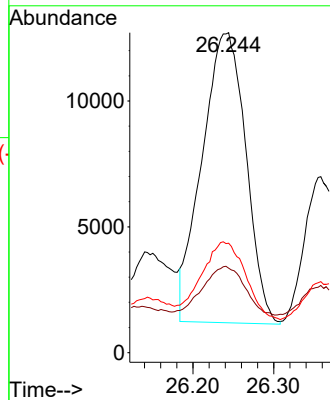
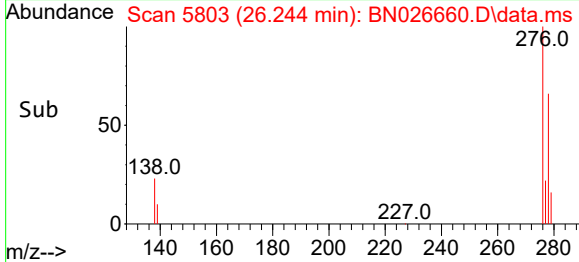


Tgt Ion:278 Resp: 43428  
 Ion Ratio Lower Upper  
 278 100  
 139 26.4 18.9 28.3  
 279 34.2 31.3 46.9

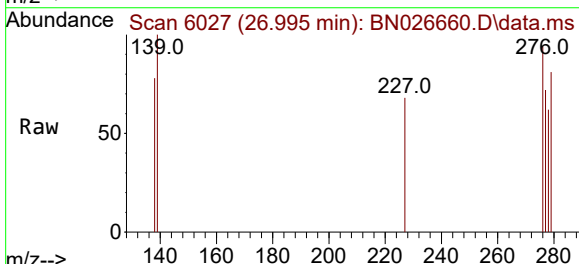
Manual Integrations

APPROVED

Reviewed By :Yogesh Patel 07/24/2023  
 Supervised By :mohammad ahmed 07/24/2023



#29  
 Benzo(g,h,i)perylene  
 Concen: 0.025 ng/ul  
 RT: 26.995 min Scan# 6027  
 Delta R.T. -0.017 min  
 Lab File: BN026660.D  
 Acq: 22 Jul 2023 18:33



Tgt Ion:276 Resp: 1375  
 Ion Ratio Lower Upper  
 276 100  
 138 83.0 22.6 34.0#  
 277 76.9 21.8 32.8#

