

Data Path : Z:\svoasrv\HPCHEM1\BNA_N\Data\BN072724\
 Data File : BN033053.D
 Acq On : 28 Jul 2024 03:28
 Operator : MA/JU
 Sample : SSTDCCC0.4
 Misc :
 ALS Vial : 69 Sample Multiplier: 1

Instrument :
 BNA_N
 ClientSampleId :
 SSTDCCC0.4EC

Manual Integrations
 APPROVED

Reviewed By :Jagrut Upadhyay 07/29/2024
 Supervised By :mohammad ahmed 07/30/2024

Quant Time: Jul 29 01:12:04 2024
 Quant Method : Z:\svoasrv\HPCHEM1\BNA_N\Methods\8270-SIM-BN071124.M
 Quant Title : ASP BNA STANDARDS FOR 5 POINT CALIBRATION
 QLast Update : Sun Jul 21 23:33:21 2024
 Response via : Initial Calibration

Compound	R.T.	QIon	Response	Conc	Units	Dev(Min)	
Internal Standards							
1) 1,4-Dichlorobenzene-d4	7.532	152	2466	0.400	ng	#	0.00
7) Naphthalene-d8	10.319	136	10969	0.400	ng	#	0.02
13) Acenaphthene-d10	14.169	164	7500	0.400	ng		0.00
19) Phenanthrene-d10	16.945	188	16525	0.400	ng		0.00
29) Chrysene-d12	21.151	240	14540	0.400	ng		-0.01
35) Perylene-d12	23.347	264	15229	0.400	ng	#	-0.01
System Monitoring Compounds							
4) 2-Fluorophenol	5.228	112	3491m	0.560	ng		0.05
5) Phenol-d6	6.882	99	4101m	0.530	ng		0.10
8) Nitrobenzene-d5	8.845	82	2797m	0.339	ng		0.11
11) 2-Methylnaphthalene-d10	11.935	152	6520	0.389	ng		0.02
14) 2,4,6-Tribromophenol	15.729	330	1002	0.313	ng		0.00
15) 2-Fluorobiphenyl	12.811	172	10287	0.368	ng		0.00
27) Fluoranthene-d10	18.987	212	16234	0.380	ng		0.00
31) Terphenyl-d14	19.591	244	10415	0.349	ng		0.00
Target Compounds							
2) 1,4-Dioxane	3.097	88	1672	0.547	ng	#	86
3) n-Nitrosodimethylamine	3.473	42	1307	0.506	ng	#	86
6) bis(2-Chloroethyl)ether	7.041	93	2886m	0.446	ng		
9) Naphthalene	10.372	128	11888	0.391	ng		98
10) Hexachlorobutadiene	10.564	225	2181	0.376	ng	#	98
12) 2-Methylnaphthalene	12.014	142	7300	0.368	ng		95
16) Acenaphthylene	13.891	152	11445	0.375	ng		99
17) Acenaphthene	14.233	154	8511	0.394	ng		99
18) Fluorene	15.238	166	11292	0.391	ng		100
20) 4,6-Dinitro-2-methylph...	15.555	198	309m	0.379	ng		
21) 4-Bromophenyl-phenylether	16.138	248	3444	0.355	ng		95
22) Hexachlorobenzene	16.237	284	3746	0.345	ng		93
23) Atrazine	16.436	200	2599	0.363	ng		96
24) Pentachlorophenol	16.647	266	990	0.245	ng		99
25) Phenanthrene	16.982	178	16307	0.361	ng		99
26) Anthracene	17.094	178	10721	0.288	ng		99
28) Fluoranthene	19.020	202	20661	0.378	ng		100
30) Pyrene	19.387	202	21746	0.366	ng		99
32) Benzo(a)anthracene	21.143	228	15243	0.332	ng		98
33) Chrysene	21.196	228	23055	0.422	ng		100
34) Bis(2-ethylhexyl)phtha...	21.026	149	14134m	0.555	ng		
36) Indeno(1,2,3-cd)pyrene	25.560	276	21243	0.354	ng		98
37) Benzo(b)fluoranthene	22.689	252	18582	0.350	ng		97
38) Benzo(k)fluoranthene	22.733	252	23454	0.387	ng		97
39) Benzo(a)pyrene	23.262	252	17317	0.362	ng		96
40) Dibenzo(a,h)anthracene	25.563	278	16618	0.350	ng		99
41) Benzo(g,h,i)perylene	26.238	276	19089	0.363	ng		98

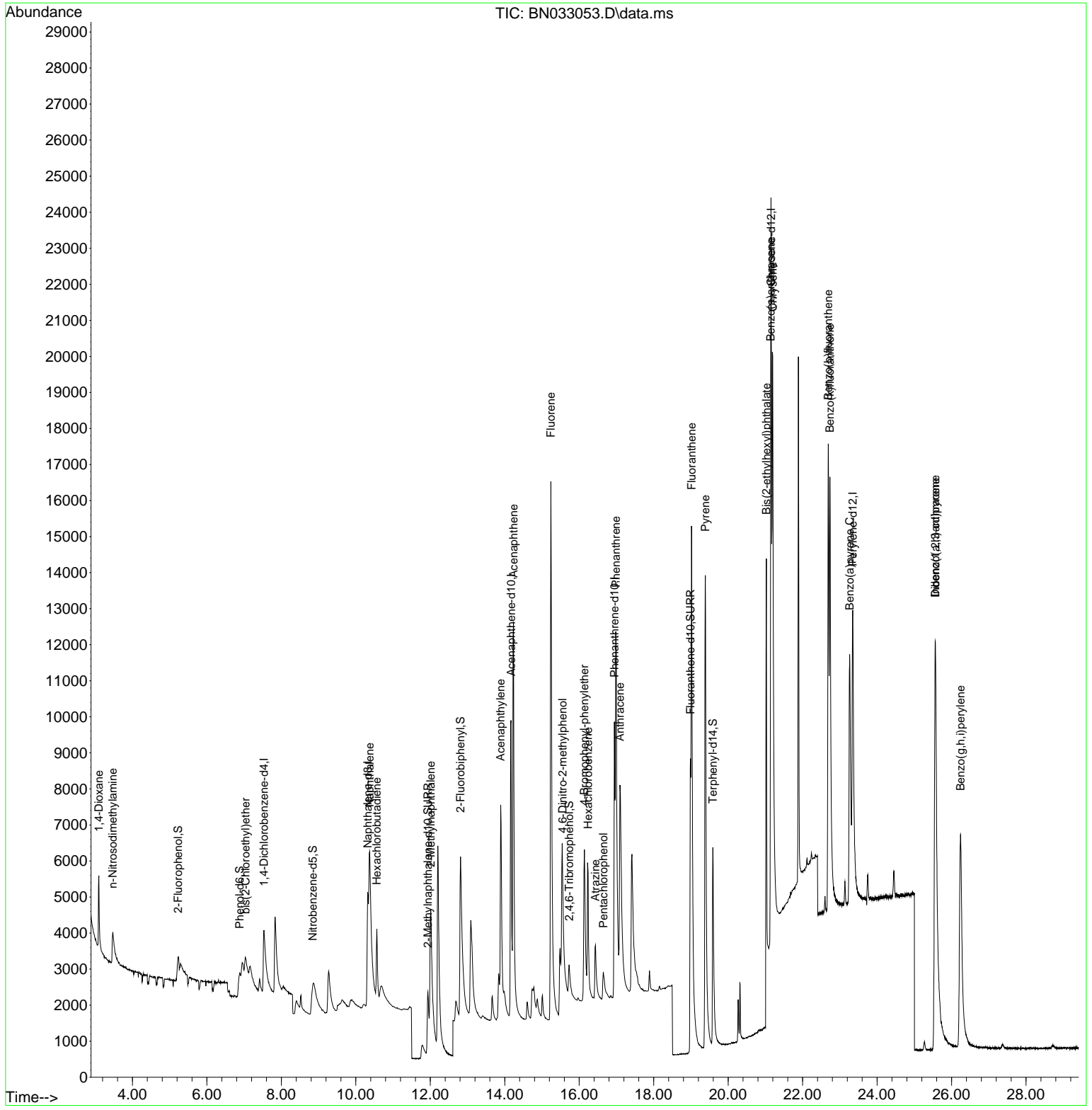
(#) = qualifier out of range (m) = manual integration (+) = signals summed

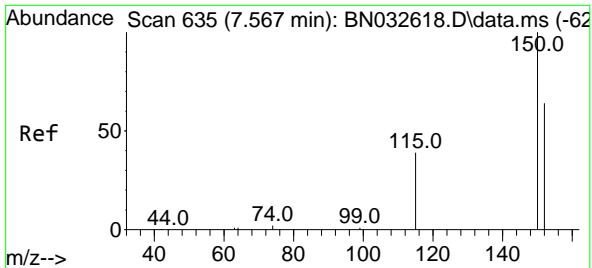
Data Path : Z:\svoasrv\HPCHEM1\BNA_N\Data\BN072724\
 Data File : BN033053.D
 Acq On : 28 Jul 2024 03:28
 Operator : MA/JU
 Sample : SSTDCCC0.4
 Misc :
 ALS Vial : 69 Sample Multiplier: 1

Instrument :
 BNA_N
ClientSampleId :
 SSTDCCC0.4EC

Quant Time: Jul 29 01:12:04 2024
 Quant Method : Z:\svoasrv\HPCHEM1\BNA_N\Methods\8270-SIM-BN071124.M
 Quant Title : ASP BNA STANDARDS FOR 5 POINT CALIBRATION
 QLast Update : Sun Jul 21 23:33:21 2024
 Response via : Initial Calibration

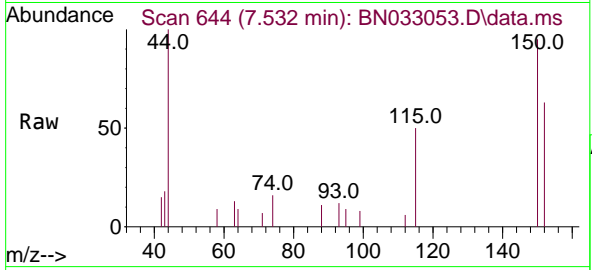
Manual Integrations
APPROVED
 Reviewed By :Jagrut Upadhyay 07/29/2024
 Supervised By :mohammad ahmed 07/30/2024





#1
 1,4-Dichlorobenzene-d4
 Concen: 0.400 ng
 RT: 7.532 min Scan# 64
 Delta R.T. 0.001 min
 Lab File: BN033053.D
 Acq: 28 Jul 2024 03:28

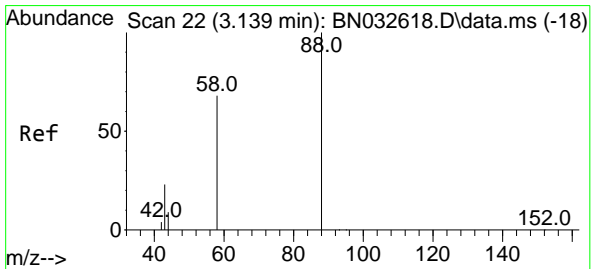
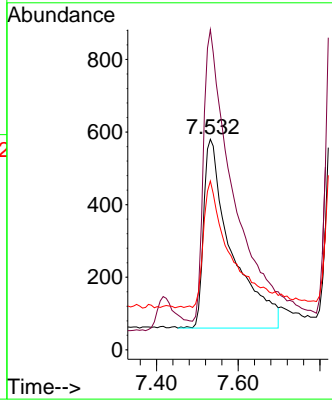
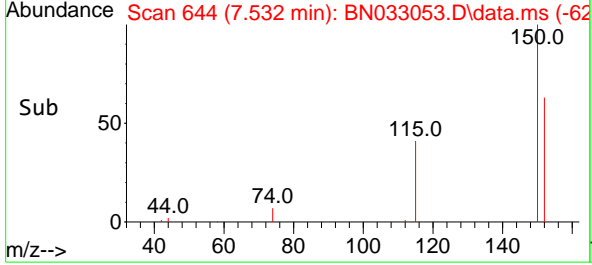
Instrument : BNA_N
 ClientSampleId : SSTDCCC0.4EC



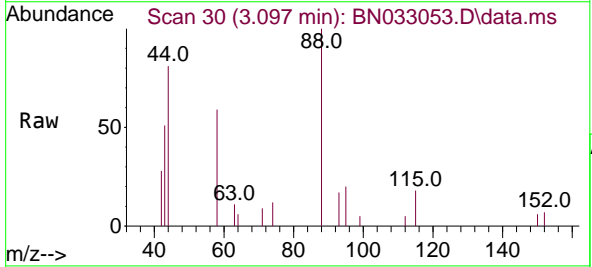
Tgt Ion: 152 Resp: 2460
 Ion Ratio Lower Upper
 152 100
 150 152.1 123.8 185.6
 115 80.2 52.8 79.2

Manual Integrations
 APPROVED

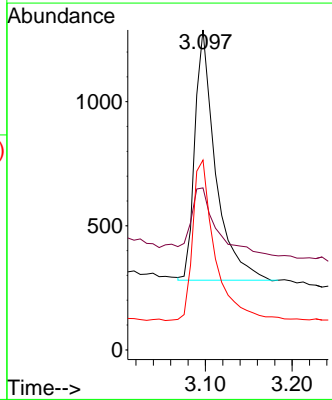
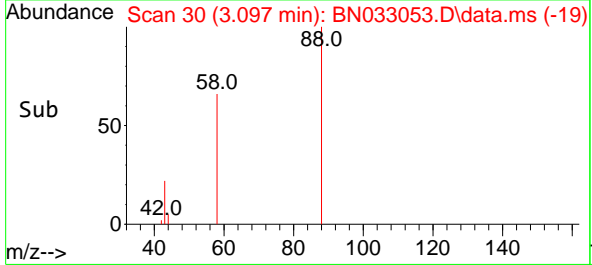
Reviewed By :Jagrut Upadhyay 07/29/2024
 Supervised By :mohammad ahmed 07/30/2024

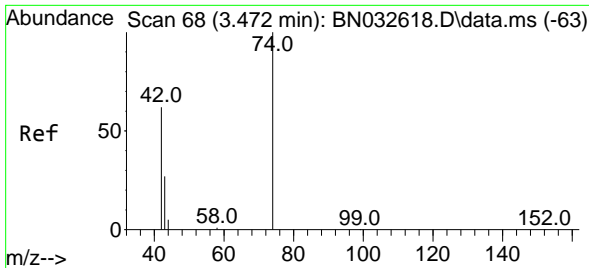


#2
 1,4-Dioxane
 Concen: 0.547 ng
 RT: 3.097 min Scan# 30
 Delta R.T. -0.021 min
 Lab File: BN033053.D
 Acq: 28 Jul 2024 03:28



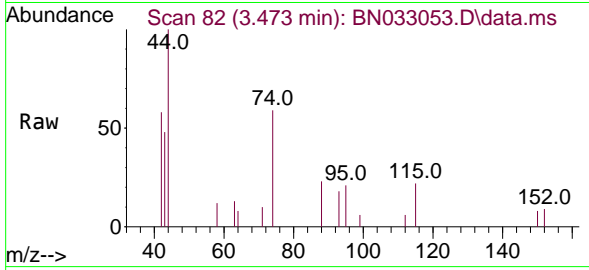
Tgt Ion: 88 Resp: 1672
 Ion Ratio Lower Upper
 88 100
 43 33.6 18.4 27.6#
 58 69.7 49.2 73.8





#3
 n-Nitrosodimethylamine
 Concen: 0.506 ng
 RT: 3.473 min Scan# 81
 Delta R.T. 0.023 min
 Lab File: BN033053.D
 Acq: 28 Jul 2024 03:28

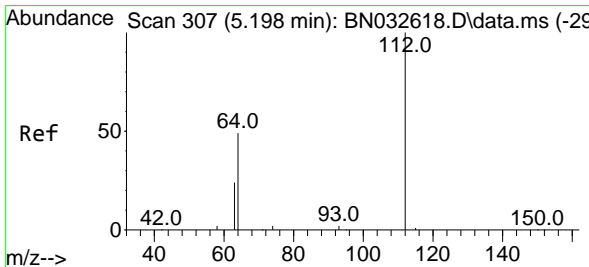
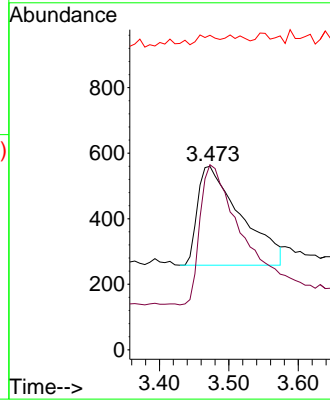
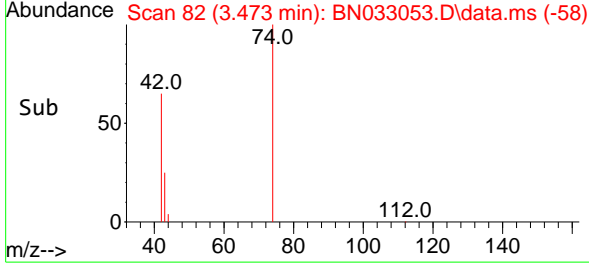
Instrument : BNA_N
 ClientSampleId : SSTDCCC0.4EC



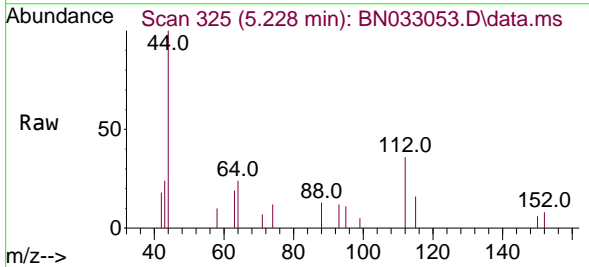
Tgt Ion: 42 Resp: 130
 Ion Ratio Lower Upper
 42 100
 74 140.3 126.9 190.3
 44 3.6 4.8 7.2

Manual Integrations
APPROVED

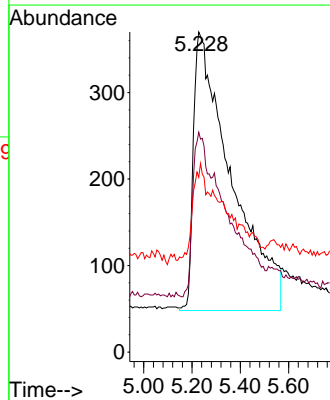
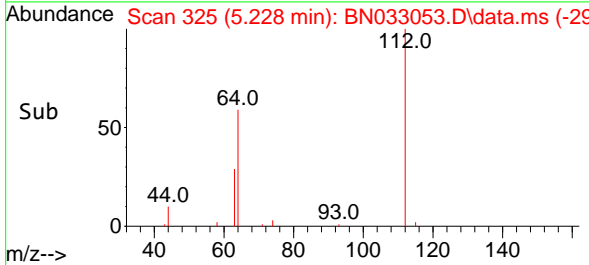
Reviewed By :Jagrut Upadhyay 07/29/2024
 Supervised By :mohammad ahmed 07/30/2024

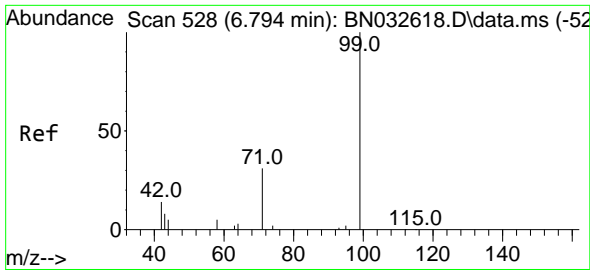


#4
 2-Fluorophenol
 Concen: 0.560 ng m
 RT: 5.228 min Scan# 325
 Delta R.T. 0.052 min
 Lab File: BN033053.D
 Acq: 28 Jul 2024 03:28



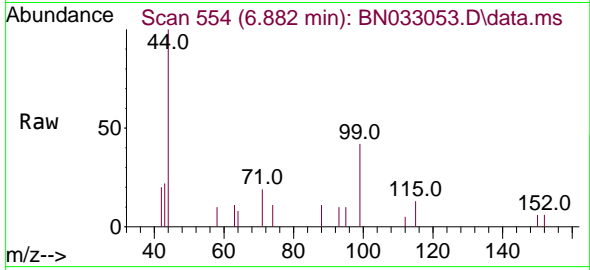
Tgt Ion:112 Resp: 3491
 Ion Ratio Lower Upper
 112 100
 64 38.7 40.2 60.4#
 63 13.7 22.2 33.4#





#5
 Phenol-d6
 Concen: 0.530 ng m
 RT: 6.882 min Scan# 511
 Delta R.T. 0.102 min
 Lab File: BN033053.D
 Acq: 28 Jul 2024 03:28

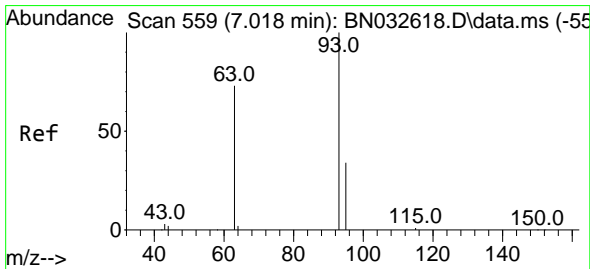
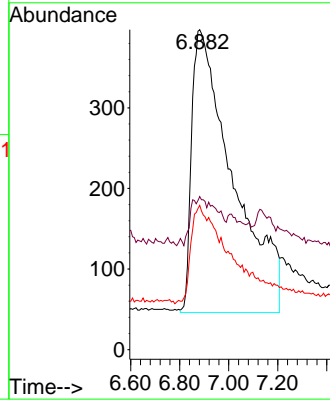
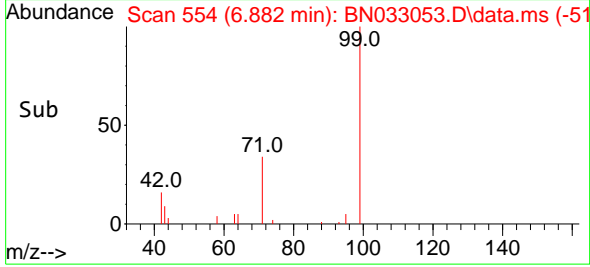
Instrument : BNA_N
 ClientSampleId : SSTDCCC0.4EC



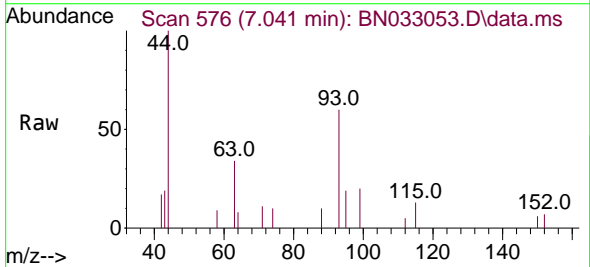
Tgt Ion: 99 Resp: 410
 Ion Ratio Lower Upper
 99 100
 42 0.0 10.5 15.7#
 71 23.7 22.3 33.5

Manual Integrations
 APPROVED

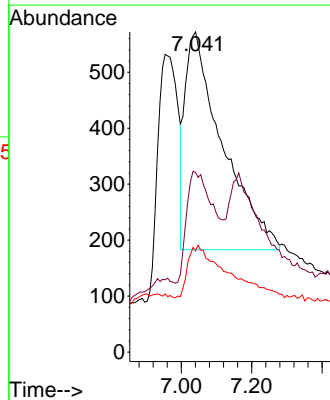
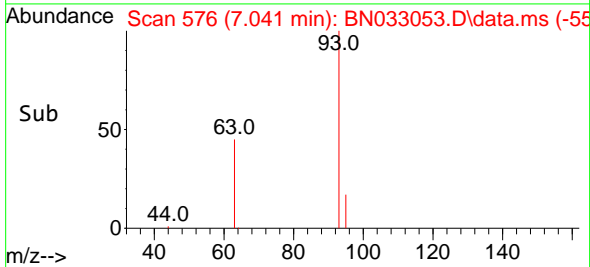
Reviewed By :Jagrut Upadhyay 07/29/2024
 Supervised By :mohammad ahmed 07/30/2024

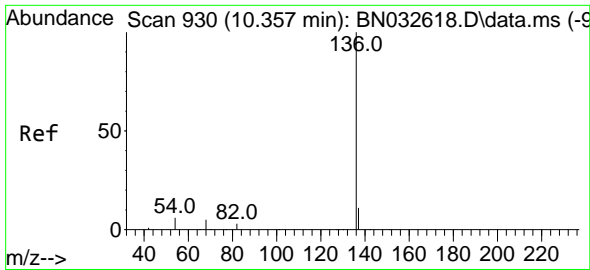


#6
 bis(2-Chloroethyl)ether
 Concen: 0.446 ng m
 RT: 7.041 min Scan# 576
 Delta R.T. 0.052 min
 Lab File: BN033053.D
 Acq: 28 Jul 2024 03:28



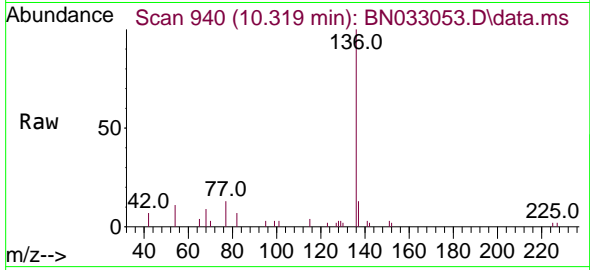
Tgt Ion: 93 Resp: 2886
 Ion Ratio Lower Upper
 93 100
 63 2.4 46.4 69.6#
 95 0.0 25.5 38.3#





#7
 Naphthalene-d8
 Concen: 0.400 ng
 RT: 10.319 min Scan# 94
 Delta R.T. 0.015 min
 Lab File: BN033053.D
 Acq: 28 Jul 2024 03:28

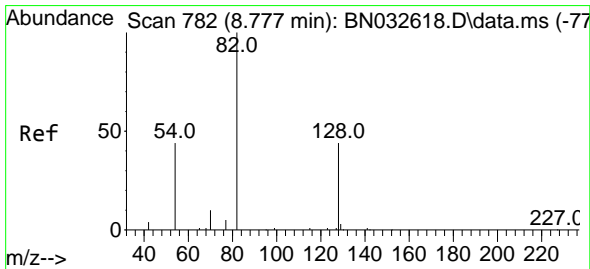
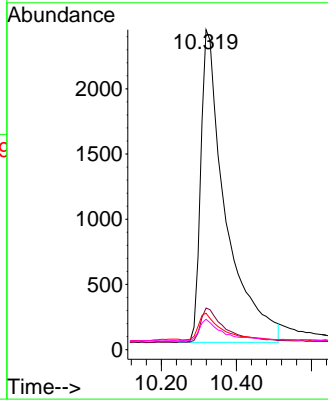
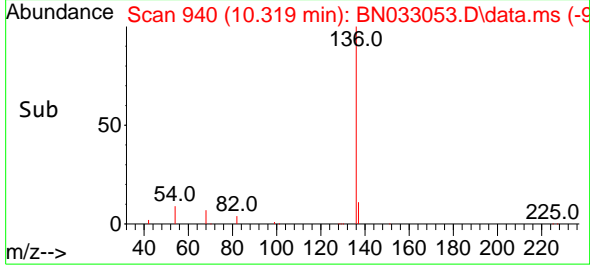
Instrument :
 BNA_N
 ClientSampleId :
 SSTDCCC0.4EC



Tgt Ion: 136 Resp: 1096
 Ion Ratio Lower Upper
 136 100
 137 13.0 9.9 14.9
 54 11.4 6.5 9.7
 68 9.5 5.8 8.8#

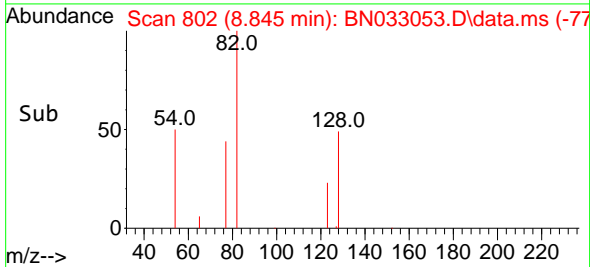
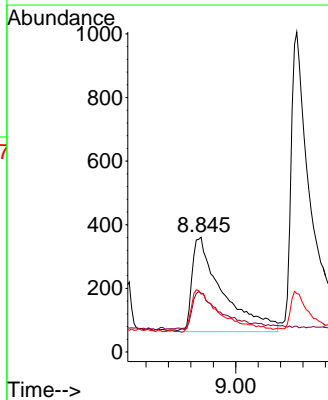
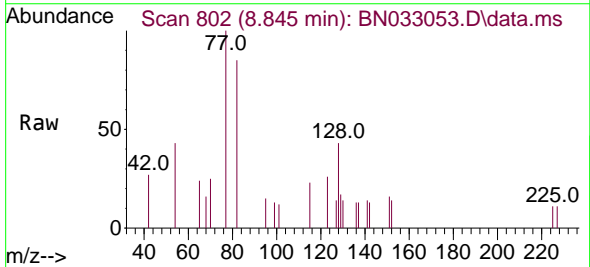
Manual Integrations
 APPROVED

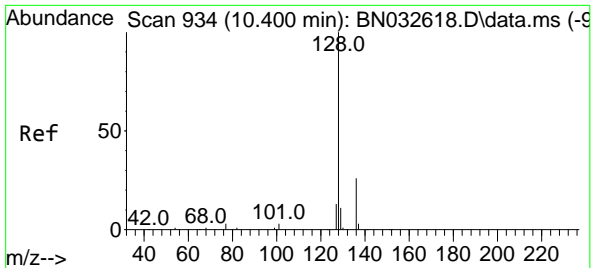
Reviewed By :Jagrut Upadhyay 07/29/2024
 Supervised By :mohammad ahmed 07/30/2024



#8
 Nitrobenzene-d5
 Concen: 0.339 ng m
 RT: 8.845 min Scan# 802
 Delta R.T. 0.111 min
 Lab File: BN033053.D
 Acq: 28 Jul 2024 03:28

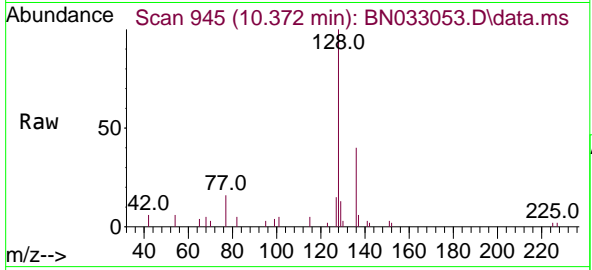
Tgt Ion: 82 Resp: 2797
 Ion Ratio Lower Upper
 82 100
 128 51.2 41.7 62.5
 54 50.4 39.5 59.3





#9
Naphthalene
 Concen: 0.391 ng
 RT: 10.372 min Scan# 945
 Delta R.T. 0.015 min
 Lab File: BN033053.D
 Acq: 28 Jul 2024 03:28

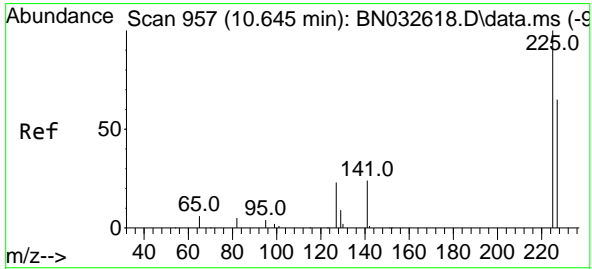
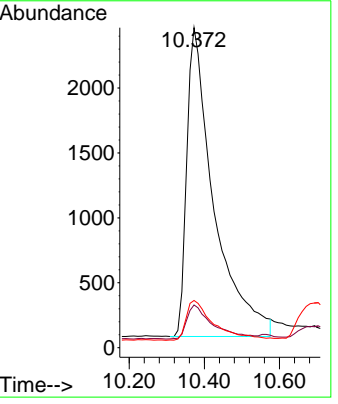
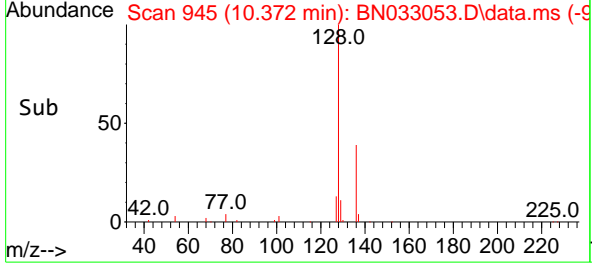
Instrument :
 BNA_N
ClientSampleId :
 SSTDCCC0.4EC



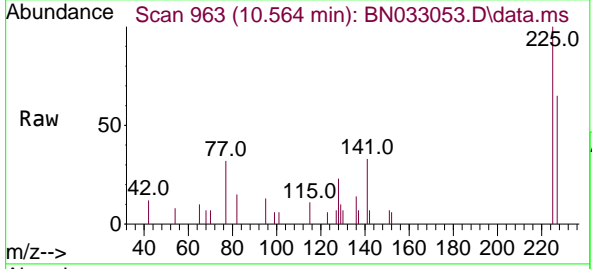
Tgt Ion: 128 Resp: 1188

Ion	Ratio	Lower	Upper
128	100		
129	13.3	9.8	14.8
127	14.7	11.5	17.3

Manual Integrations
APPROVED
 Reviewed By :Jagrut Upadhyay 07/29/2024
 Supervised By :mohammad ahmed 07/30/2024

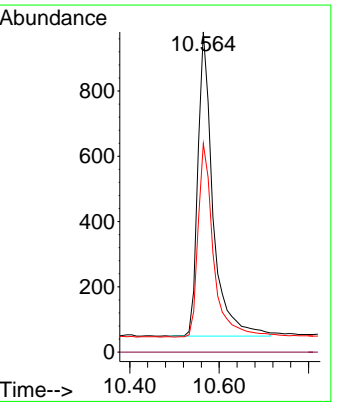
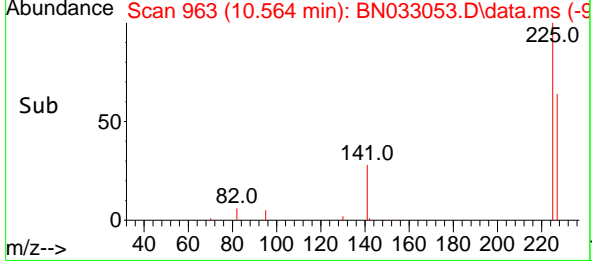


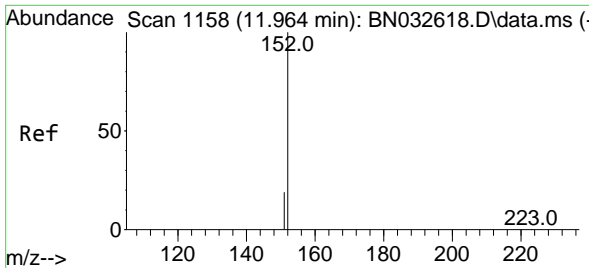
#10
Hexachlorobutadiene
 Concen: 0.376 ng
 RT: 10.564 min Scan# 963
 Delta R.T. -0.038 min
 Lab File: BN033053.D
 Acq: 28 Jul 2024 03:28



Tgt Ion: 225 Resp: 2181

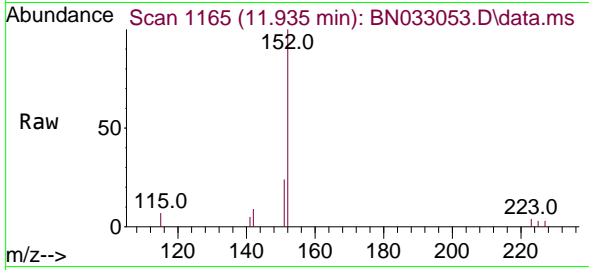
Ion	Ratio	Lower	Upper
225	100		
223	0.0	0.0	0.0
227	65.3	51.3	76.9





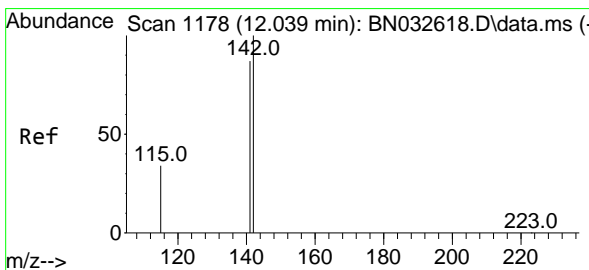
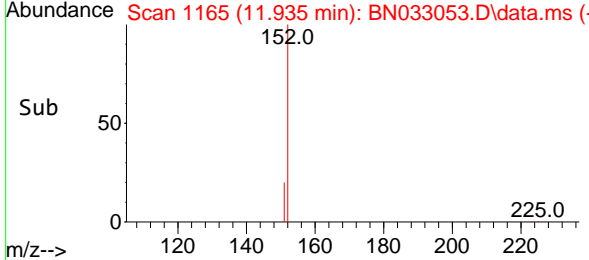
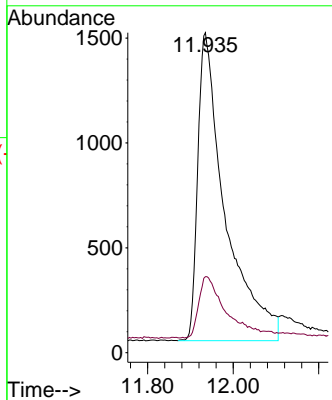
#11
 2-Methylnaphthalene-d10
 Concen: 0.389 ng
 RT: 11.935 min Scan# 1186
 Delta R.T. 0.020 min
 Lab File: BN033053.D
 Acq: 28 Jul 2024 03:28

Instrument : BNA_N
 ClientSampleId : SSTDCCC0.4EC



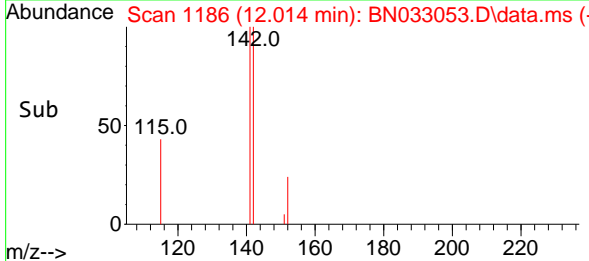
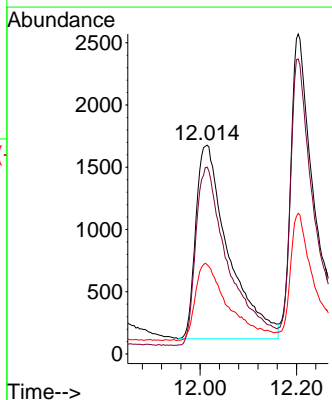
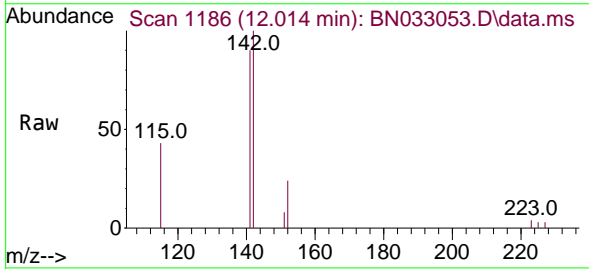
Tgt Ion:152 Resp: 6520
 Ion Ratio Lower Upper
 152 100
 151 19.7 16.2 24.2

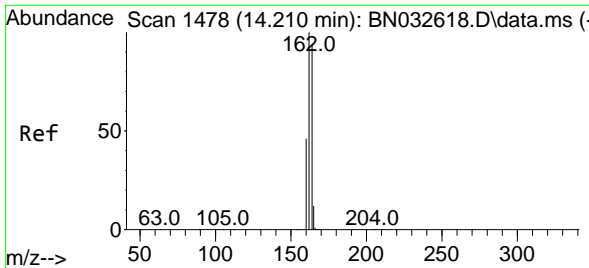
Manual Integrations
APPROVED
 Reviewed By :Jagrut Upadhyay 07/29/2024
 Supervised By :mohammad ahmed 07/30/2024



#12
 2-Methylnaphthalene
 Concen: 0.368 ng
 RT: 12.014 min Scan# 1186
 Delta R.T. 0.024 min
 Lab File: BN033053.D
 Acq: 28 Jul 2024 03:28

Tgt Ion:142 Resp: 7300
 Ion Ratio Lower Upper
 142 100
 141 89.5 69.3 103.9
 115 42.7 29.5 44.3





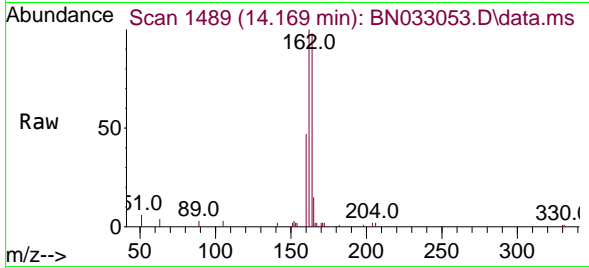
#13
 Acenaphthene-d10
 Concen: 0.400 ng
 RT: 14.169 min Scan# 14
 Delta R.T. -0.009 min
 Lab File: BN033053.D
 Acq: 28 Jul 2024 03:28

Instrument :

BNA_N

ClientSampleId :

SSTDCCC0.4EC

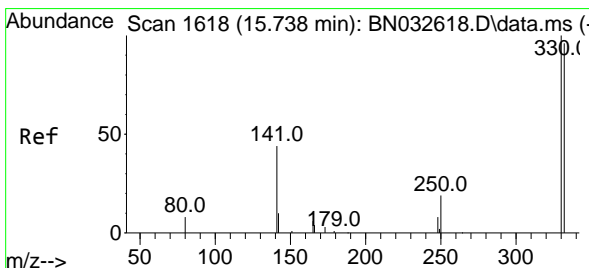
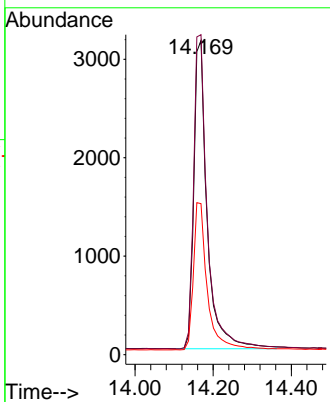
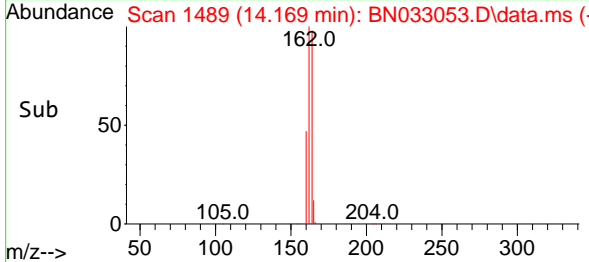


Tgt Ion:164 Resp: 7500
 Ion Ratio Lower Upper
 164 100
 162 101.9 85.0 127.4
 160 48.1 39.4 59.2

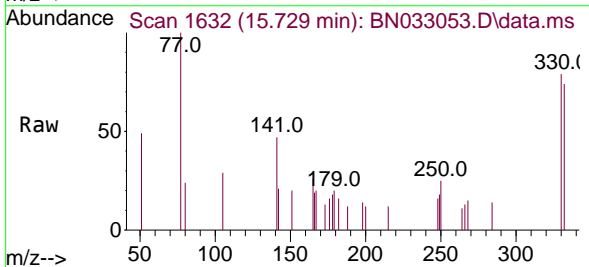
Manual Integrations

APPROVED

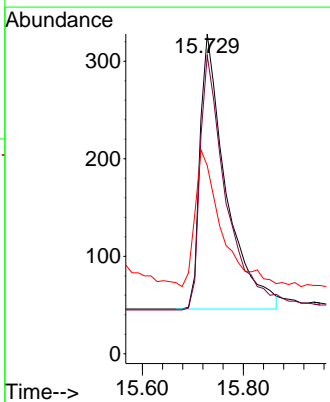
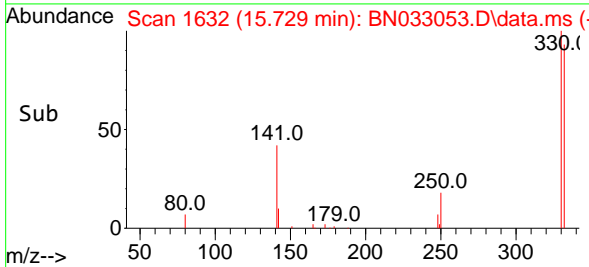
Reviewed By :Jagrut Upadhyay 07/29/2024
 Supervised By :mohammad ahmed 07/30/2024

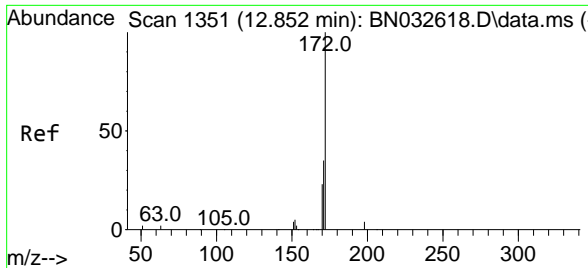


#14
 2,4,6-Tribromophenol
 Concen: 0.313 ng
 RT: 15.729 min Scan# 1632
 Delta R.T. 0.003 min
 Lab File: BN033053.D
 Acq: 28 Jul 2024 03:28



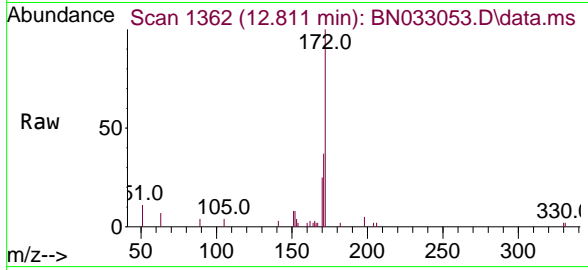
Tgt Ion:330 Resp: 1002
 Ion Ratio Lower Upper
 330 100
 332 92.3 77.8 116.8
 141 50.2 34.2 51.2





#15
 2-Fluorobiphenyl
 Concen: 0.368 ng
 RT: 12.811 min Scan# 11
 Delta R.T. 0.001 min
 Lab File: BN033053.D
 Acq: 28 Jul 2024 03:28

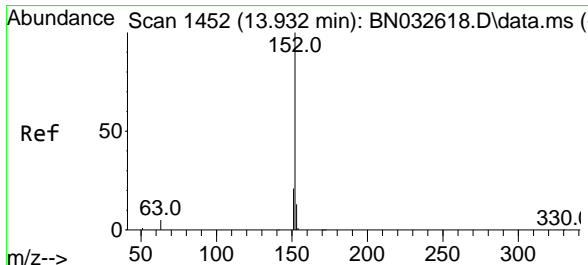
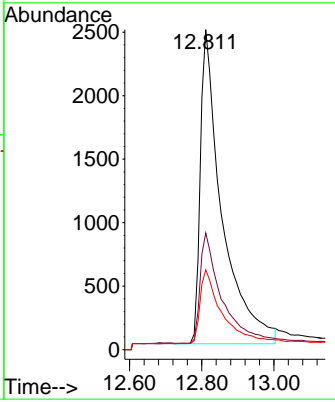
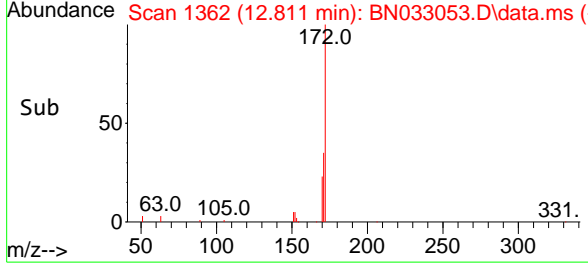
Instrument : BNA_N
 ClientSampleId : SSTDCCC0.4EC



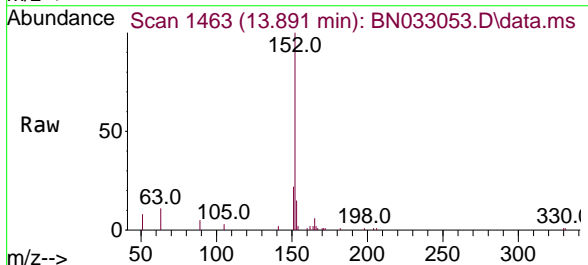
Tgt Ion: 172 Resp: 1028

Ion	Ratio	Lower	Upper
172	100		
171	36.5	28.6	43.0
170	25.0	19.0	28.6

Manual Integrations
APPROVED
 Reviewed By :Jagrut Upadhyay 07/29/2024
 Supervised By :mohammad ahmed 07/30/2024

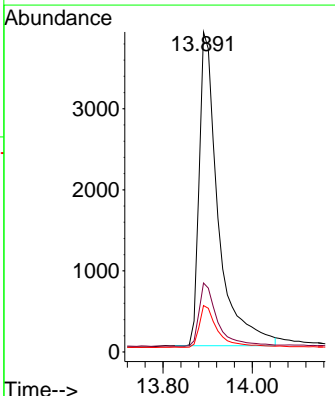
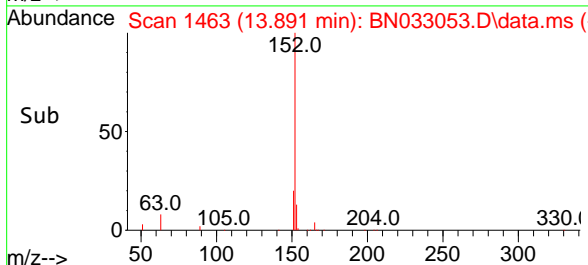


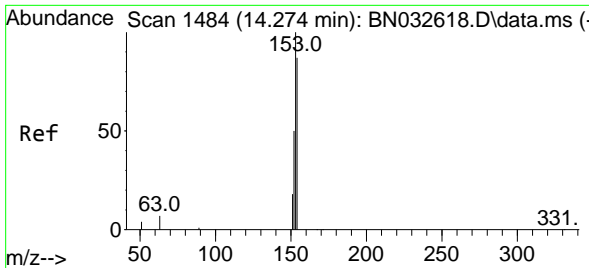
#16
 Acenaphthylene
 Concen: 0.375 ng
 RT: 13.891 min Scan# 1463
 Delta R.T. -0.009 min
 Lab File: BN033053.D
 Acq: 28 Jul 2024 03:28



Tgt Ion: 152 Resp: 11445

Ion	Ratio	Lower	Upper
152	100		
151	19.5	16.0	24.0
153	13.1	10.6	15.8





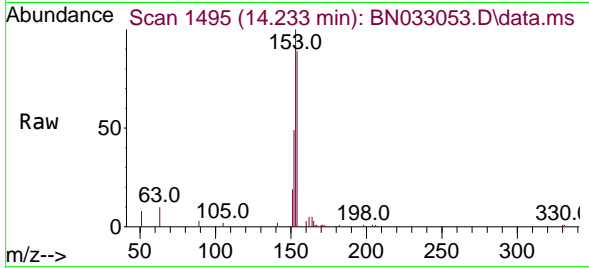
#17
 Acenaphthene
 Concen: 0.394 ng
 RT: 14.233 min Scan# 1484
 Delta R.T. -0.009 min
 Lab File: BN033053.D
 Acq: 28 Jul 2024 03:28

Instrument :

BNA_N

ClientSampleId :

SSTDCCC0.4EC

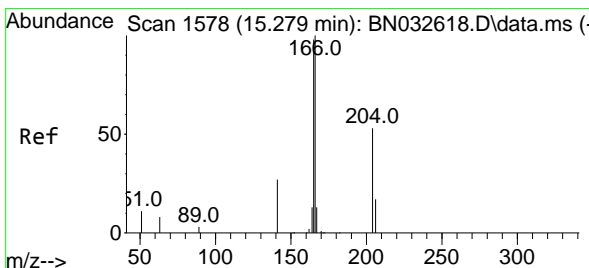
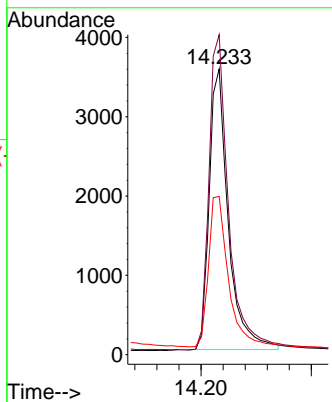
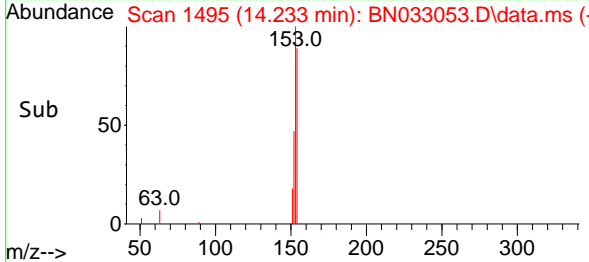


Tgt Ion:154 Resp: 851
 Ion Ratio Lower Upper
 154 100
 153 115.4 91.8 137.8
 152 55.9 45.2 67.8

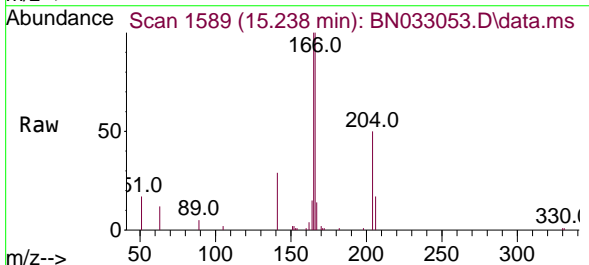
Manual Integrations

APPROVED

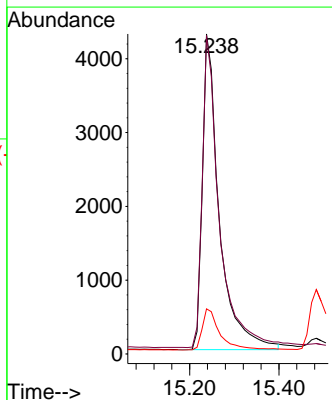
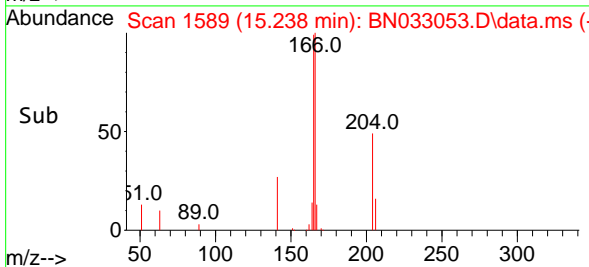
Reviewed By :Jagrut Upadhyay 07/29/2024
 Supervised By :mohammad ahmed 07/30/2024

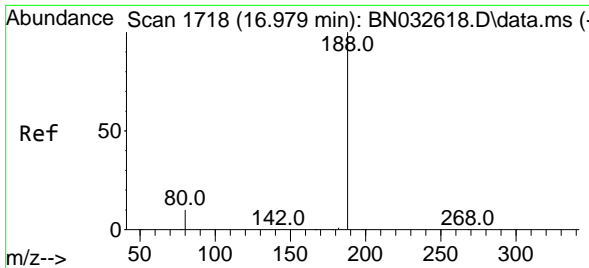


#18
 Fluorene
 Concen: 0.391 ng
 RT: 15.238 min Scan# 1589
 Delta R.T. -0.009 min
 Lab File: BN033053.D
 Acq: 28 Jul 2024 03:28



Tgt Ion:166 Resp: 11292
 Ion Ratio Lower Upper
 166 100
 165 98.0 78.0 117.0
 167 13.5 10.7 16.1





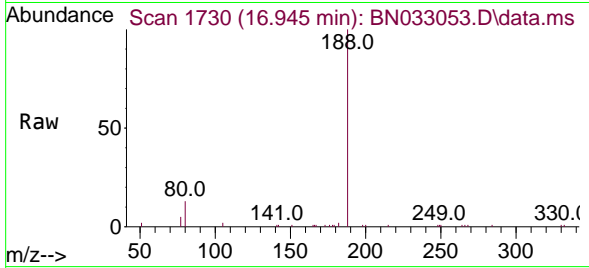
#19
 Phenanthrene-d10
 Concen: 0.400 ng
 RT: 16.945 min Scan# 11
 Delta R.T. -0.009 min
 Lab File: BN033053.D
 Acq: 28 Jul 2024 03:28

Instrument :

BNA_N

ClientSampleId :

SSTDCCC0.4EC

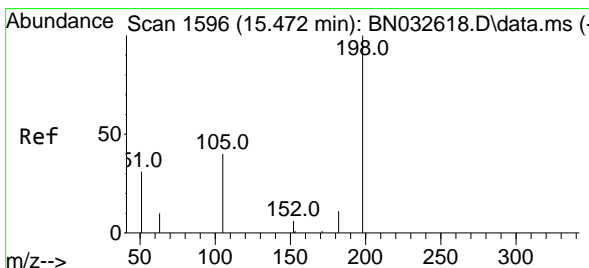
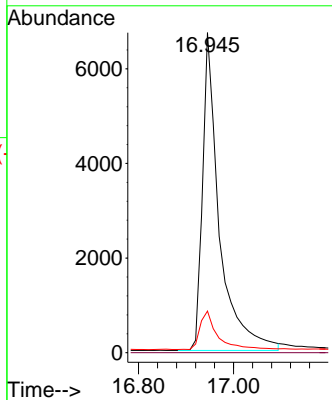
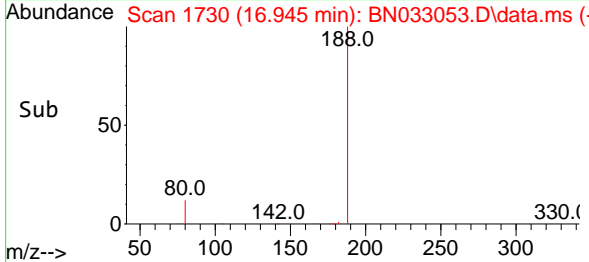


Tgt Ion:188 Resp: 1652
 Ion Ratio Lower Upper
 188 100
 94 0.0 0.0 0.0
 80 13.0 8.8 13.2

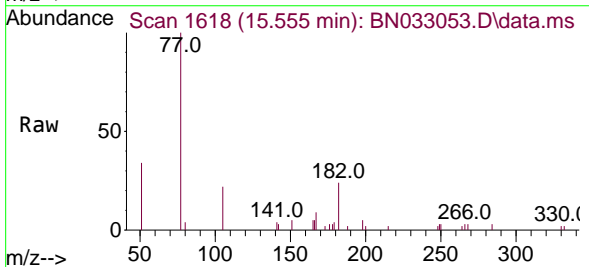
Manual Integrations

APPROVED

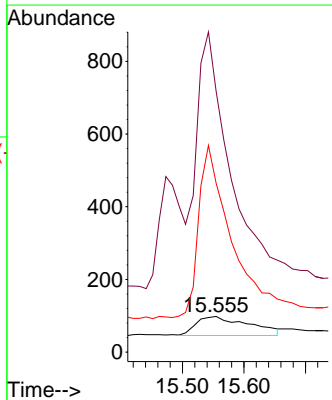
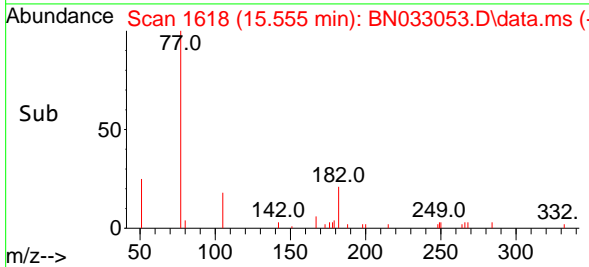
Reviewed By :Jagrut Upadhyay 07/29/2024
 Supervised By :mohammad ahmed 07/30/2024

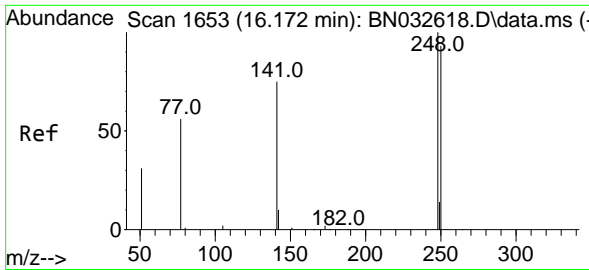


#20
 4,6-Dinitro-2-methylphenol
 Concen: 0.379 ng m
 RT: 15.555 min Scan# 1618
 Delta R.T. 0.083 min
 Lab File: BN033053.D
 Acq: 28 Jul 2024 03:28



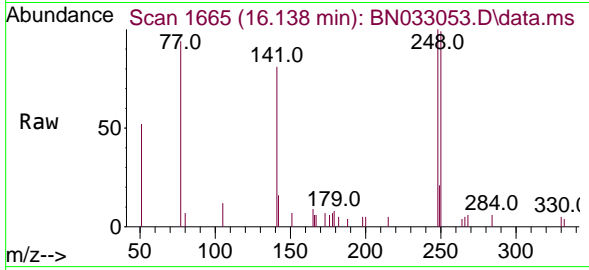
Tgt Ion:198 Resp: 309
 Ion Ratio Lower Upper
 198 100
 51 732.7 105.7 158.5#
 105 474.5 63.0 94.6#





#21
 4-Bromophenyl-phenylether
 Concen: 0.355 ng
 RT: 16.138 min Scan# 1665
 Delta R.T. 0.003 min
 Lab File: BN033053.D
 Acq: 28 Jul 2024 03:28

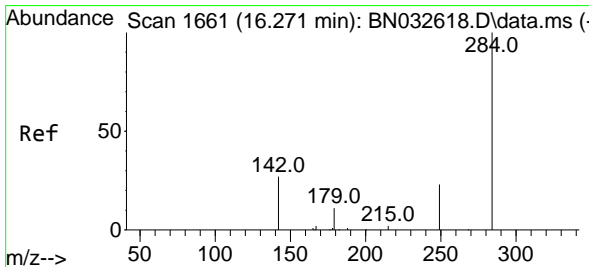
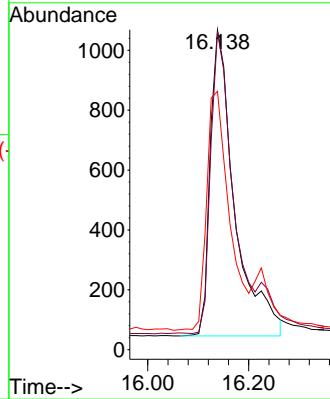
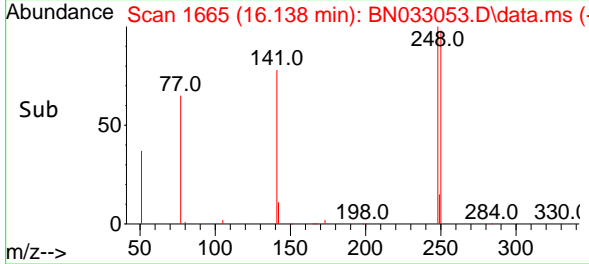
Instrument :
 BNA_N
 ClientSampleId :
 SSTDCCC0.4EC



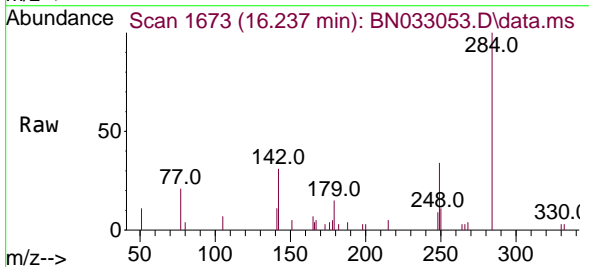
Tgt Ion: 248 Resp: 344
 Ion Ratio Lower Upper
 248 100
 250 99.2 75.1 112.7
 141 80.7 62.0 93.0

Manual Integrations
 APPROVED

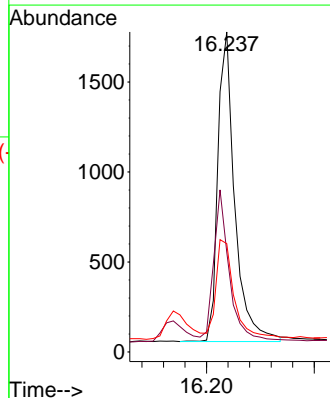
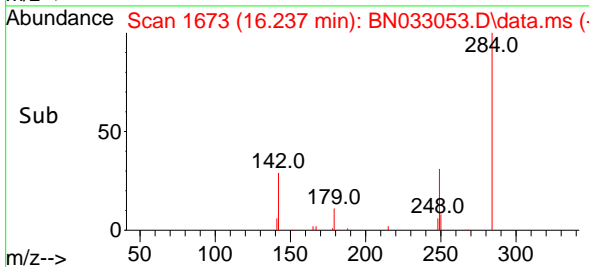
Reviewed By :Jagrut Upadhyay 07/29/2024
 Supervised By :mohammad ahmed 07/30/2024

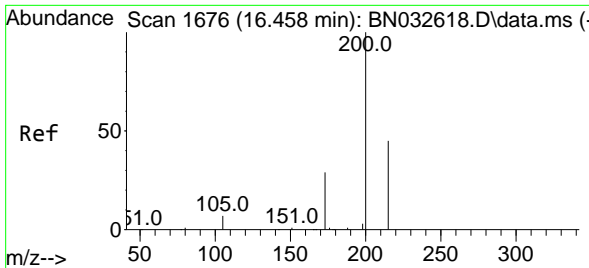


#22
 Hexachlorobenzene
 Concen: 0.345 ng
 RT: 16.237 min Scan# 1673
 Delta R.T. -0.009 min
 Lab File: BN033053.D
 Acq: 28 Jul 2024 03:28



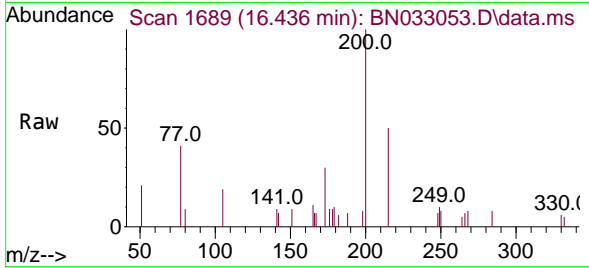
Tgt Ion: 284 Resp: 3746
 Ion Ratio Lower Upper
 284 100
 142 42.7 29.4 44.0
 249 32.3 24.6 36.8





#23
 Atrazine
 Concen: 0.363 ng
 RT: 16.436 min Scan# 1706
 Delta R.T. 0.003 min
 Lab File: BN033053.D
 Acq: 28 Jul 2024 03:28

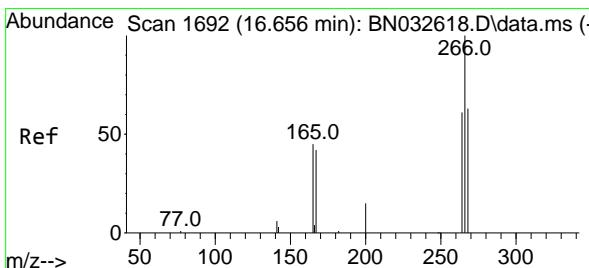
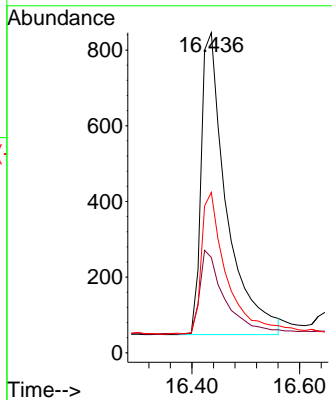
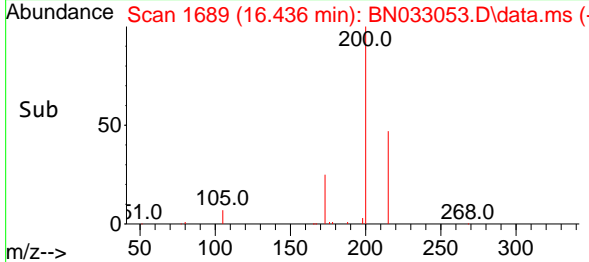
Instrument :
 BNA_N
 ClientSampleId :
 SSTDCCC0.4EC



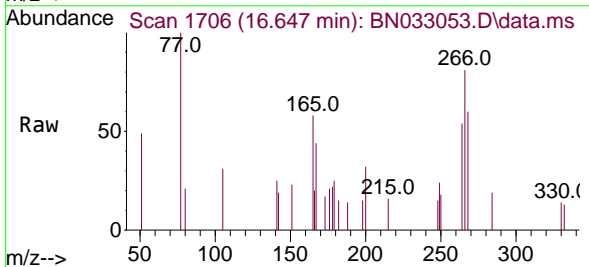
Tgt Ion:200 Resp: 259
 Ion Ratio Lower Upper
 200 100
 173 29.8 25.4 38.2
 215 50.1 38.2 57.2

Manual Integrations
 APPROVED

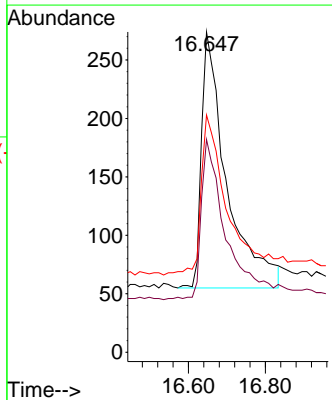
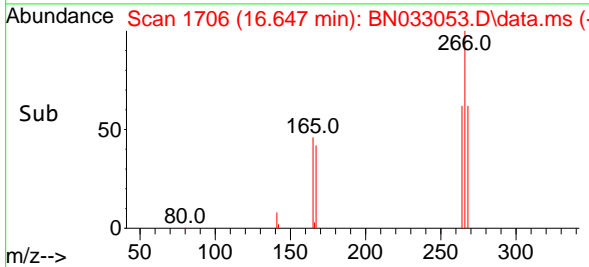
Reviewed By :Jagrut Upadhyay 07/29/2024
 Supervised By :mohammad ahmed 07/30/2024

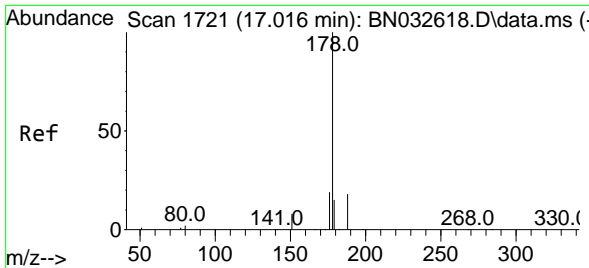


#24
 Pentachlorophenol
 Concen: 0.245 ng
 RT: 16.647 min Scan# 1706
 Delta R.T. 0.003 min
 Lab File: BN033053.D
 Acq: 28 Jul 2024 03:28



Tgt Ion:266 Resp: 990
 Ion Ratio Lower Upper
 266 100
 264 61.7 50.2 75.2
 268 65.6 52.8 79.2





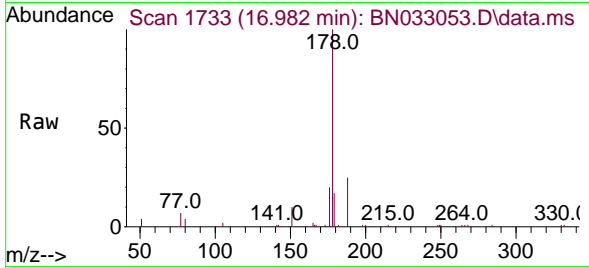
#25
 Phenanthrene
 Concen: 0.361 ng
 RT: 16.982 min Scan# 1719
 Delta R.T. -0.009 min
 Lab File: BN033053.D
 Acq: 28 Jul 2024 03:28

Instrument :

BNA_N

ClientSampleId :

SSTDCCC0.4EC

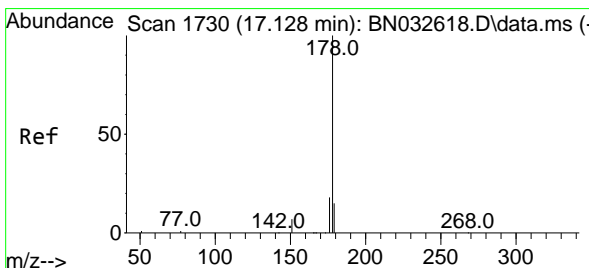
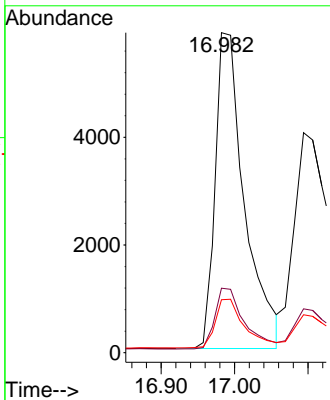
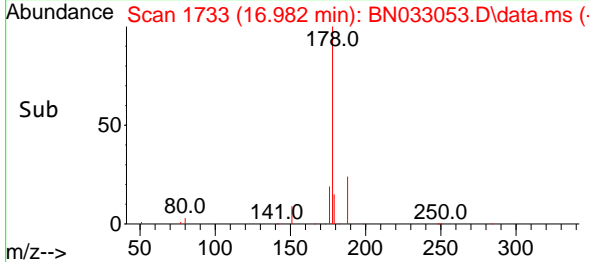


Tgt Ion:178 Resp: 1630
 Ion Ratio Lower Upper
 178 100
 176 19.3 15.1 22.7
 179 15.3 12.2 18.4

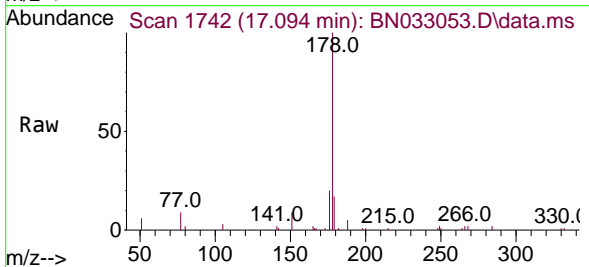
Manual Integrations

APPROVED

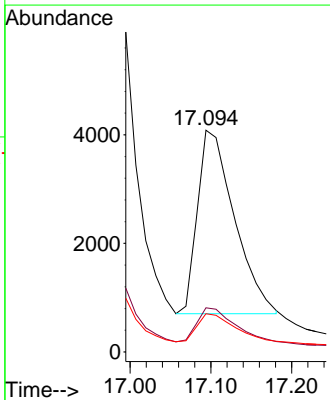
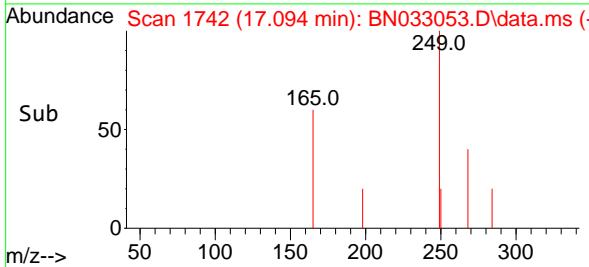
Reviewed By :Jagrut Upadhyay 07/29/2024
 Supervised By :mohammad ahmed 07/30/2024

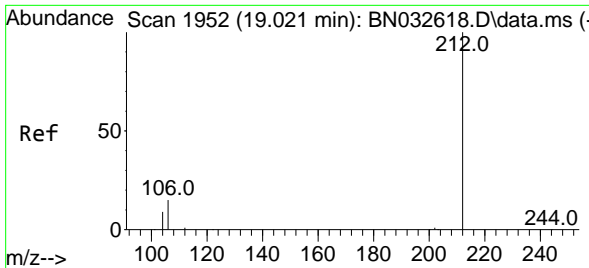


#26
 Anthracene
 Concen: 0.288 ng
 RT: 17.094 min Scan# 1742
 Delta R.T. 0.003 min
 Lab File: BN033053.D
 Acq: 28 Jul 2024 03:28



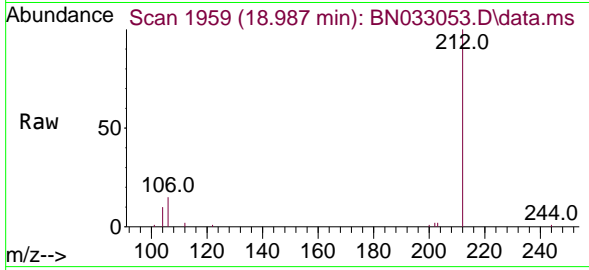
Tgt Ion:178 Resp: 10721
 Ion Ratio Lower Upper
 178 100
 176 18.6 14.8 22.2
 179 15.2 11.8 17.8





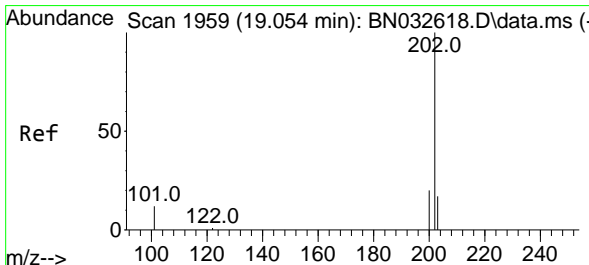
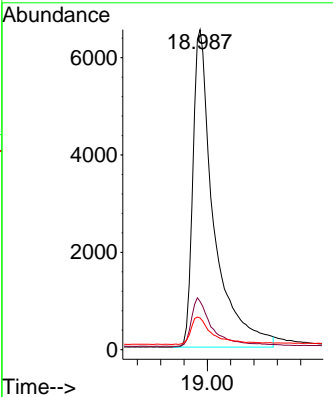
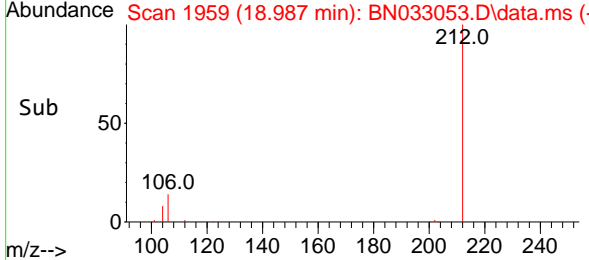
#27
 Fluoranthene-d10
 Concen: 0.380 ng
 RT: 18.987 min Scan# 1952
 Delta R.T. -0.006 min
 Lab File: BN033053.D
 Acq: 28 Jul 2024 03:28

Instrument : BNA_N
 ClientSampleId : SSTDCCC0.4EC

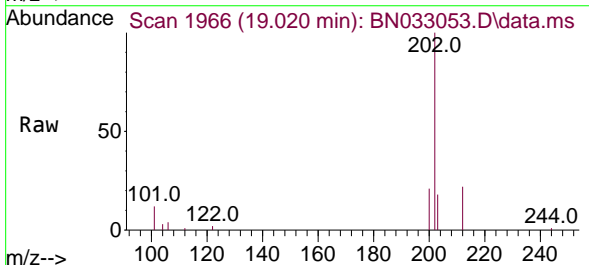


Tgt Ion:212 Resp: 16234
 Ion Ratio Lower Upper
 212 100
 106 15.3 11.9 17.9
 104 8.9 6.9 10.3

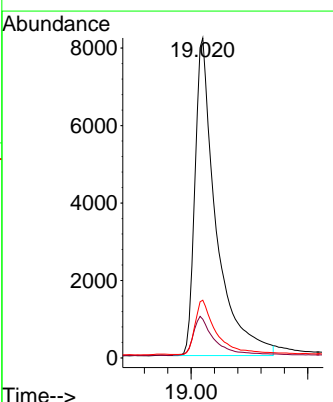
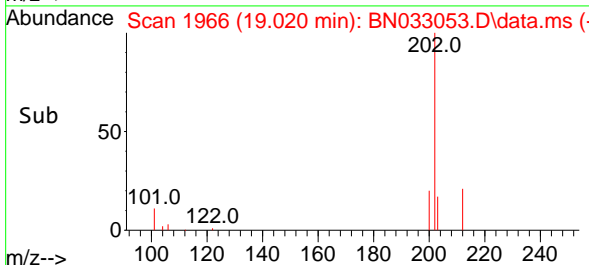
Manual Integrations
APPROVED
 Reviewed By :Jagrut Upadhyay 07/29/2024
 Supervised By :mohammad ahmed 07/30/2024

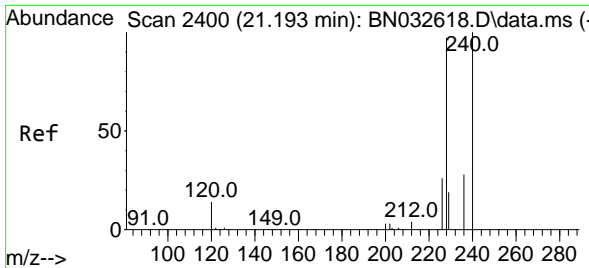


#28
 Fluoranthene
 Concen: 0.378 ng
 RT: 19.020 min Scan# 1966
 Delta R.T. -0.001 min
 Lab File: BN033053.D
 Acq: 28 Jul 2024 03:28



Tgt Ion:202 Resp: 20661
 Ion Ratio Lower Upper
 202 100
 101 12.4 9.6 14.4
 203 17.2 13.8 20.6





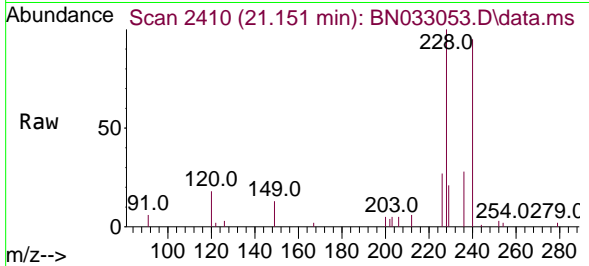
#29
 Chrysene-d12
 Concen: 0.400 ng
 RT: 21.151 min Scan# 2410
 Delta R.T. -0.015 min
 Lab File: BN033053.D
 Acq: 28 Jul 2024 03:28

Instrument :

BNA_N

ClientSampleId :

SSTDCCC0.4EC

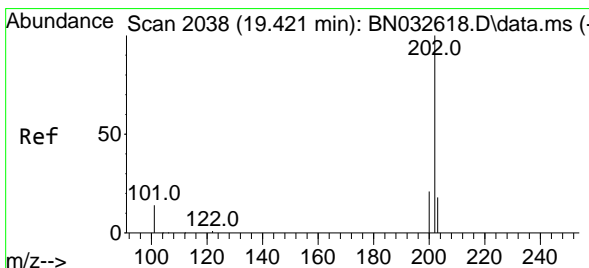
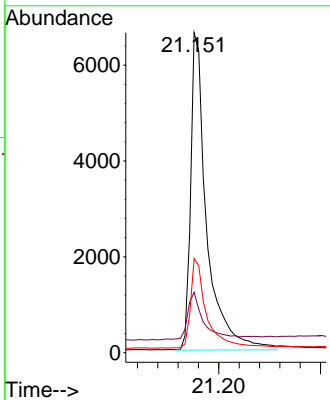
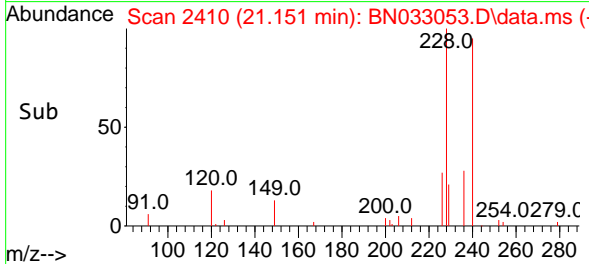


Tgt Ion:240 Resp: 14540
 Ion Ratio Lower Upper
 240 100
 120 18.9 14.8 22.2
 236 29.4 23.3 34.9

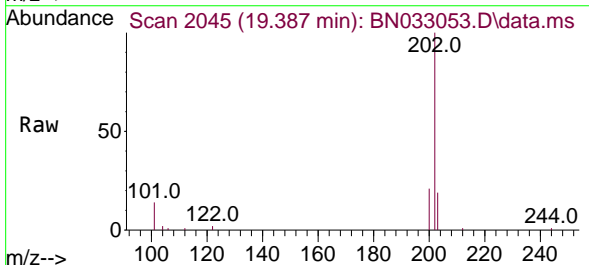
Manual Integrations

APPROVED

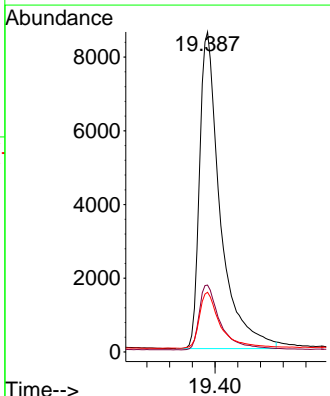
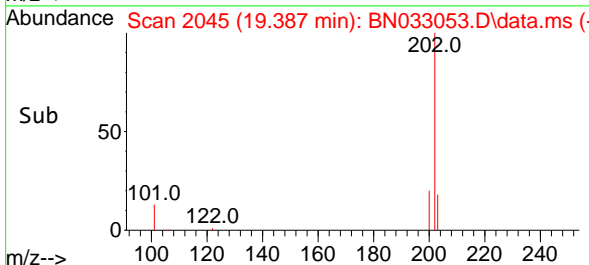
Reviewed By :Jagrut Upadhyay 07/29/2024
 Supervised By :mohammad ahmed 07/30/2024

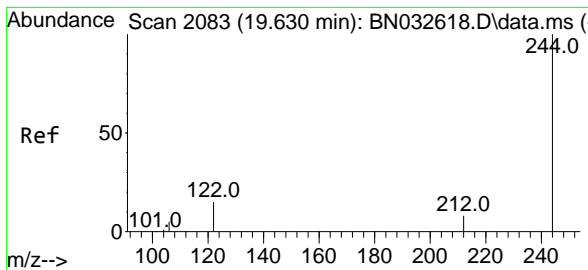


#30
 Pyrene
 Concen: 0.366 ng
 RT: 19.387 min Scan# 2045
 Delta R.T. -0.001 min
 Lab File: BN033053.D
 Acq: 28 Jul 2024 03:28



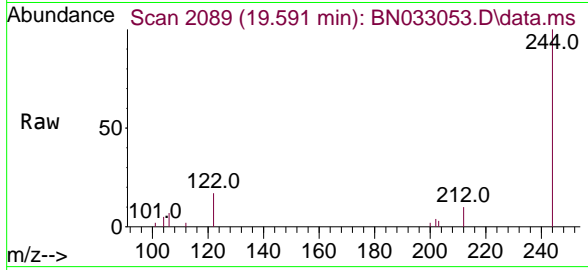
Tgt Ion:202 Resp: 21746
 Ion Ratio Lower Upper
 202 100
 200 21.0 16.6 25.0
 203 18.1 14.8 22.2





#31
 Terphenyl-d14
 Concen: 0.349 ng
 RT: 19.591 min Scan# 2089
 Delta R.T. -0.001 min
 Lab File: BN033053.D
 Acq: 28 Jul 2024 03:28

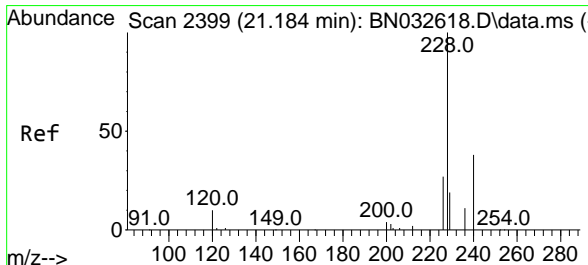
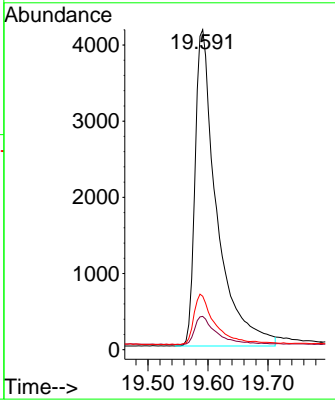
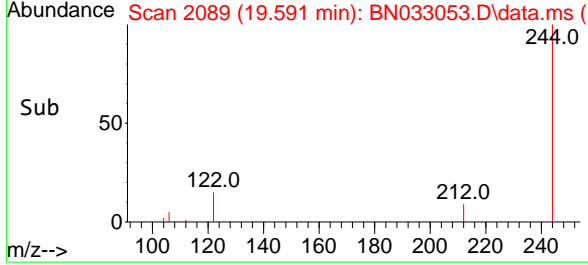
Instrument : BNA_N
 Client Sample Id : SSTDCCC0.4EC



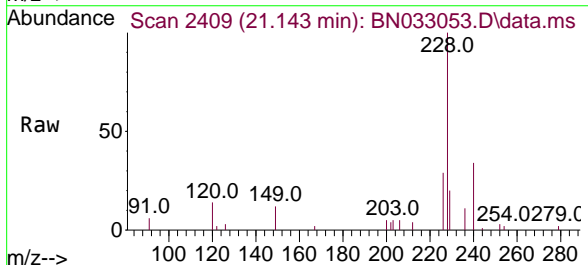
Tgt Ion: 244 Resp: 1041

Ion	Ratio	Lower	Upper
244	100		
212	10.4	7.5	11.3
122	16.7	12.6	19.0

Manual Integrations
APPROVED
 Reviewed By : Jagrut Upadhyay 07/29/2024
 Supervised By : mohammad ahmed 07/30/2024

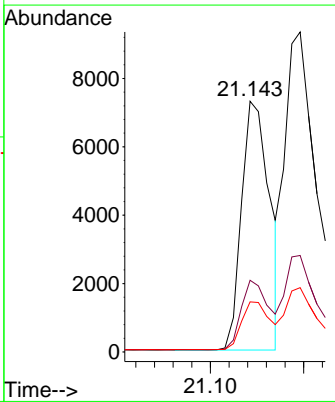
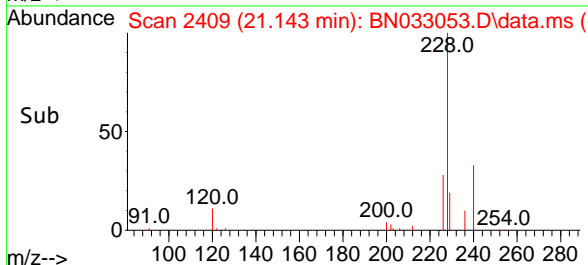


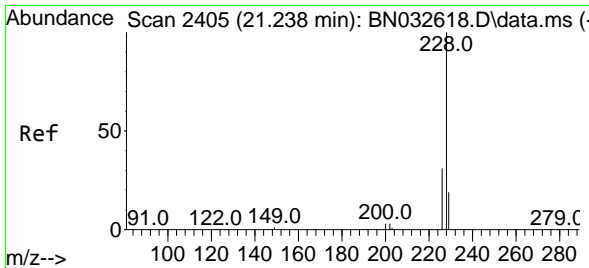
#32
 Benzo(a)anthracene
 Concen: 0.332 ng
 RT: 21.143 min Scan# 2409
 Delta R.T. -0.006 min
 Lab File: BN033053.D
 Acq: 28 Jul 2024 03:28



Tgt Ion: 228 Resp: 15243

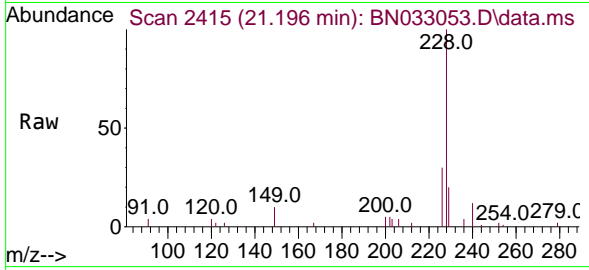
Ion	Ratio	Lower	Upper
228	100		
226	28.6	21.8	32.6
229	20.0	16.0	24.0





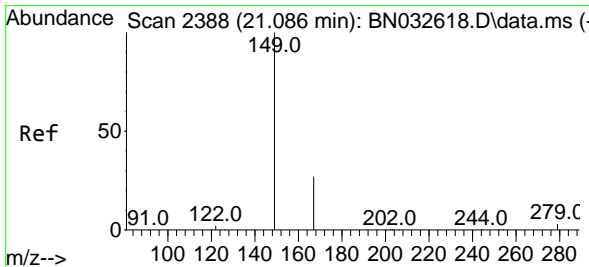
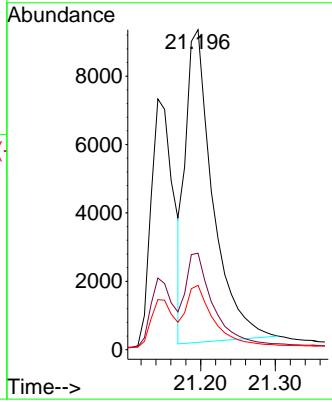
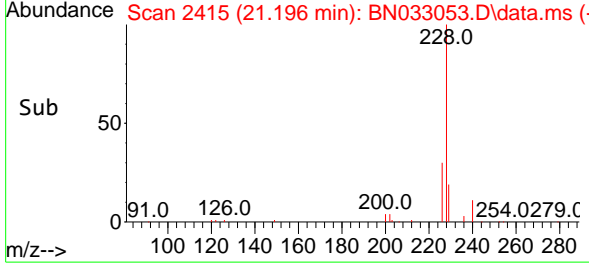
#33
 Chrysene
 Concen: 0.422 ng
 RT: 21.196 min Scan# 2415
 Delta R.T. -0.006 min
 Lab File: BN033053.D
 Acq: 28 Jul 2024 03:28

Instrument : BNA_N
 Client Sample Id : SSTDCCC0.4EC

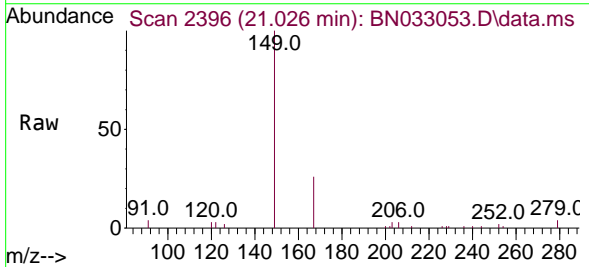


Tgt Ion: 228 Resp: 2305
 Ion Ratio Lower Upper
 228 100
 226 30.1 24.2 36.2
 229 20.1 16.0 24.0

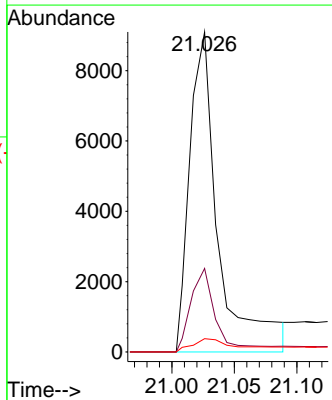
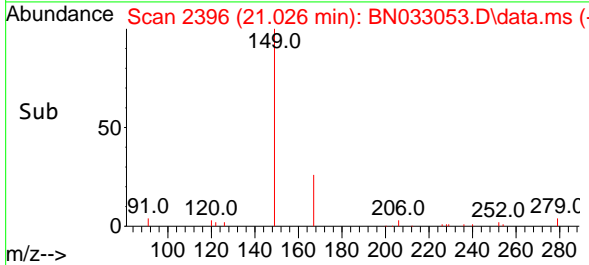
Manual Integrations
APPROVED
 Reviewed By : Jagrut Upadhyay 07/29/2024
 Supervised By : mohammad ahmed 07/30/2024

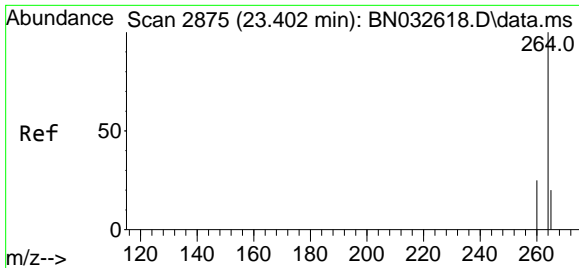


#34
 Bis(2-ethylhexyl)phthalate
 Concen: 0.555 ng m
 RT: 21.026 min Scan# 2396
 Delta R.T. -0.024 min
 Lab File: BN033053.D
 Acq: 28 Jul 2024 03:28



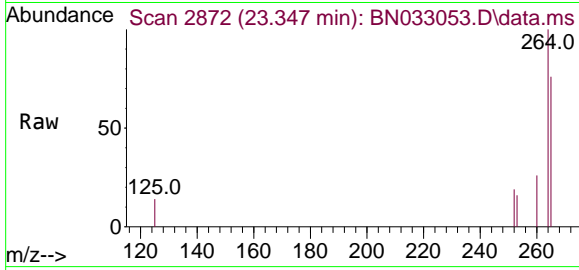
Tgt Ion: 149 Resp: 14134
 Ion Ratio Lower Upper
 149 100
 167 24.8 21.4 32.2
 279 7.3 2.8 4.2#





#35
 Perylene-d12
 Concen: 0.400 ng
 RT: 23.347 min Scan# 2875
 Delta R.T. -0.012 min
 Lab File: BN033053.D
 Acq: 28 Jul 2024 03:28

Instrument : BNA_N
 ClientSampleId : SSTDCCC0.4EC

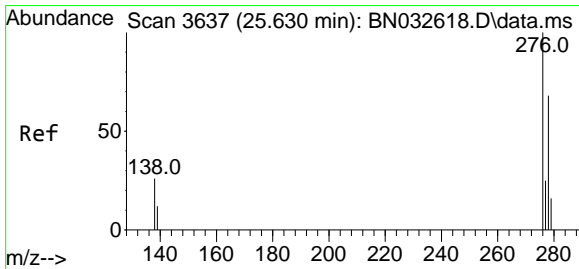
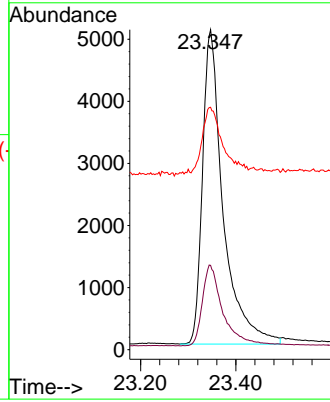
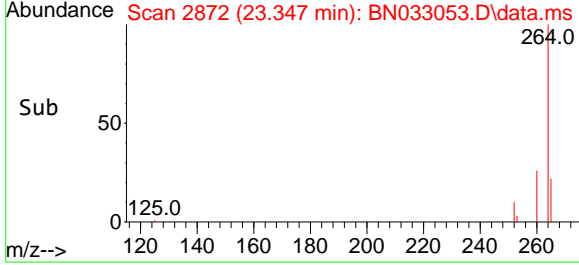


Tgt Ion: 264 Resp: 15229

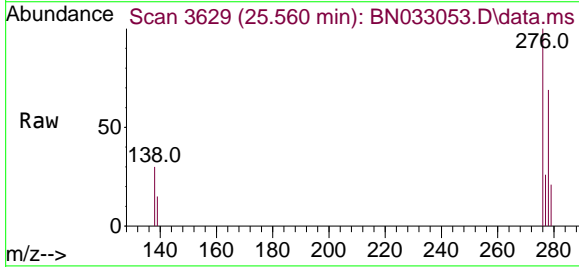
Ion	Ratio	Lower	Upper
264	100		
260	26.4	20.9	31.3
265	75.7	85.4	128.2

Manual Integrations
 APPROVED

Reviewed By :Jagrut Upadhyay 07/29/2024
 Supervised By :mohammad ahmed 07/30/2024

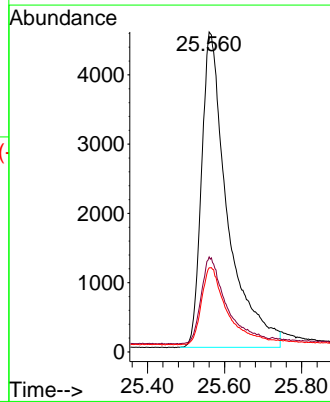
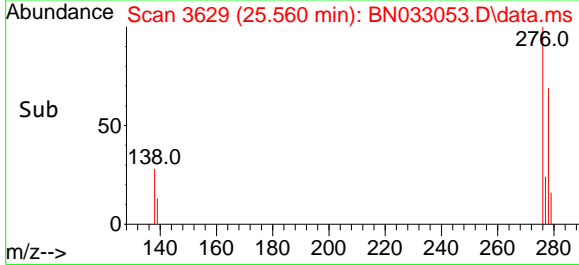


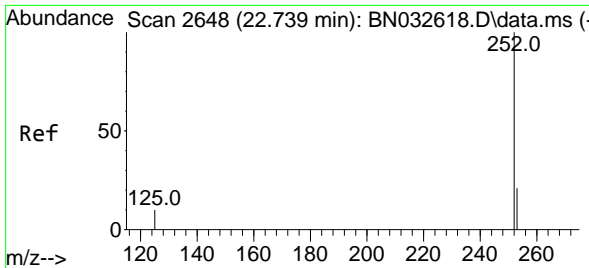
#36
 Indeno(1,2,3-cd)pyrene
 Concen: 0.354 ng
 RT: 25.560 min Scan# 3629
 Delta R.T. -0.009 min
 Lab File: BN033053.D
 Acq: 28 Jul 2024 03:28



Tgt Ion: 276 Resp: 21243

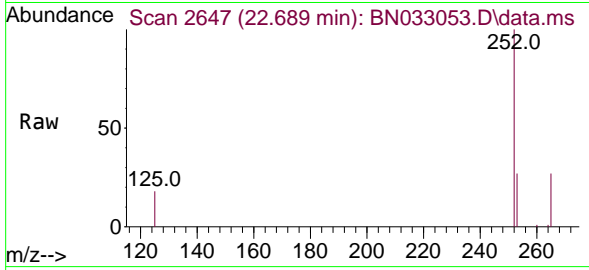
Ion	Ratio	Lower	Upper
276	100		
138	27.9	21.0	31.4
277	24.4	19.5	29.3





#37
 Benzo(b)fluoranthene
 Concen: 0.350 ng
 RT: 22.689 min Scan# 2647
 Delta R.T. -0.012 min
 Lab File: BN033053.D
 Acq: 28 Jul 2024 03:28

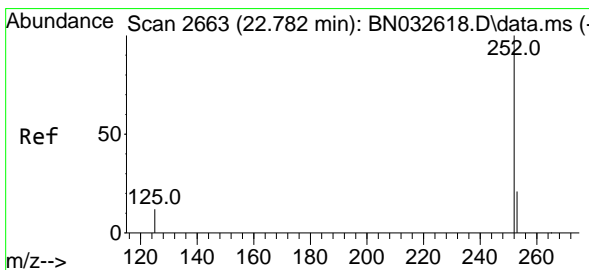
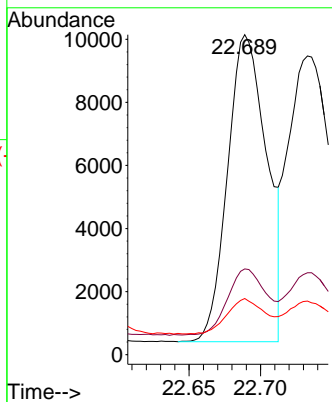
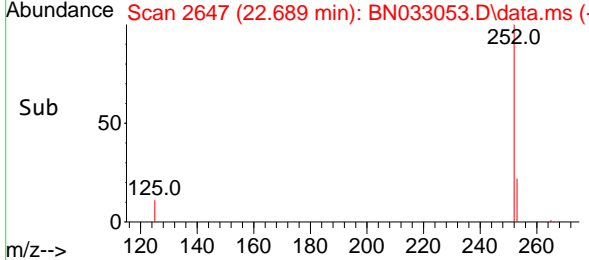
Instrument : BNA_N
 ClientSampleId : SSTDCCC0.4EC



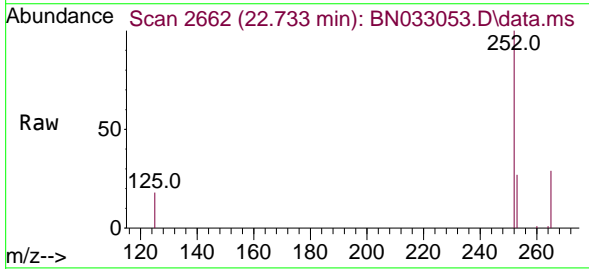
Tgt Ion:252 Resp: 1858
 Ion Ratio Lower Upper
 252 100
 253 26.8 22.3 33.5
 125 17.6 15.4 23.2

Manual Integrations
 APPROVED

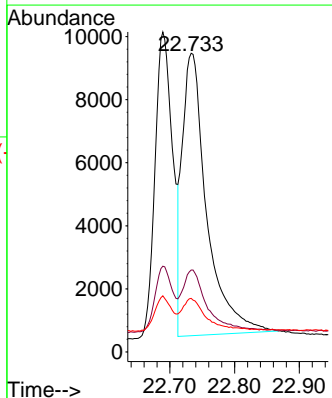
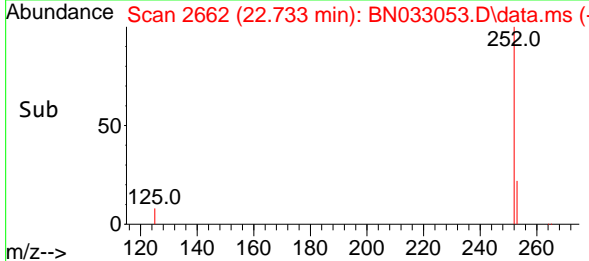
Reviewed By :Jagrut Upadhyay 07/29/2024
 Supervised By :mohammad ahmed 07/30/2024

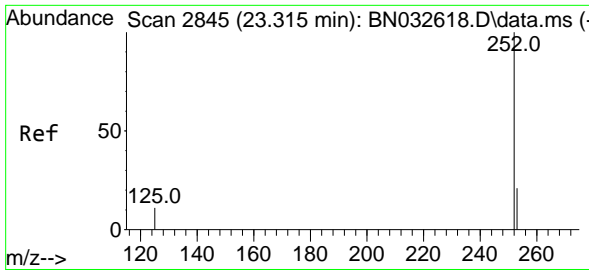


#38
 Benzo(k)fluoranthene
 Concen: 0.387 ng
 RT: 22.733 min Scan# 2662
 Delta R.T. -0.012 min
 Lab File: BN033053.D
 Acq: 28 Jul 2024 03:28



Tgt Ion:252 Resp: 23454
 Ion Ratio Lower Upper
 252 100
 253 27.4 22.6 34.0
 125 18.0 16.2 24.4





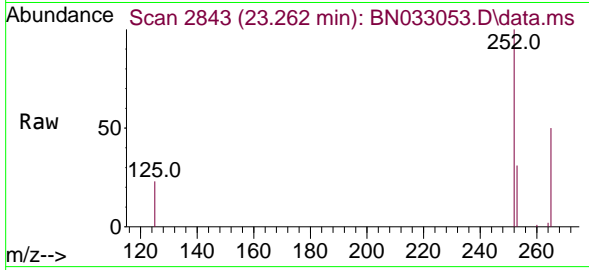
#39
 Benzo(a)pyrene
 Concen: 0.362 ng
 RT: 23.262 min Scan# 21
 Delta R.T. -0.006 min
 Lab File: BN033053.D
 Acq: 28 Jul 2024 03:28

Instrument :

BNA_N

ClientSampleId :

SSTDCCC0.4EC

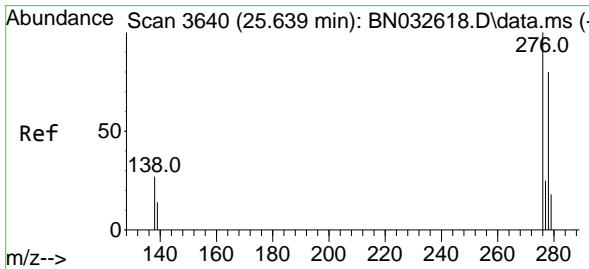
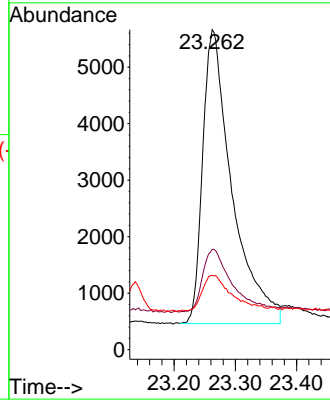
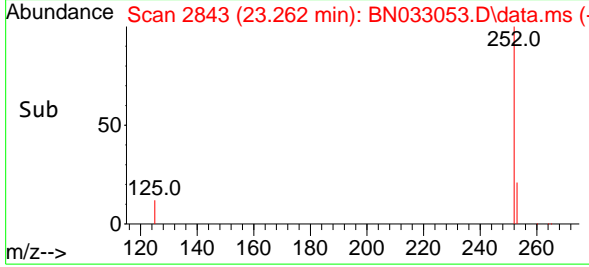


Tgt Ion:252 Resp: 1731
 Ion Ratio Lower Upper
 252 100
 253 31.4 25.8 38.8
 125 23.3 21.4 32.2

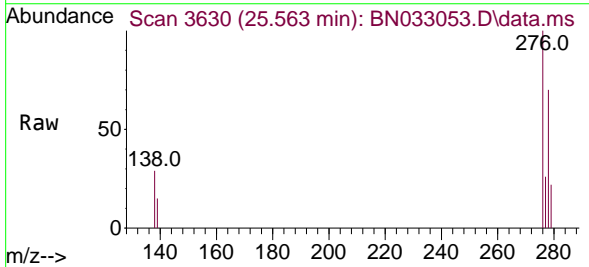
Manual Integrations

APPROVED

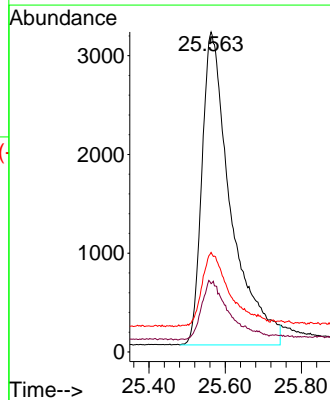
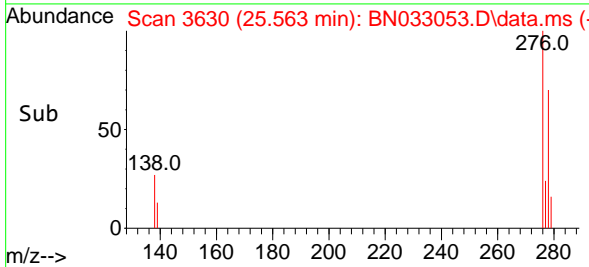
Reviewed By :Jagrut Upadhyay 07/29/2024
 Supervised By :mohammad ahmed 07/30/2024

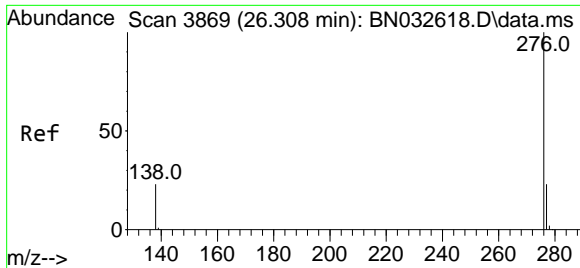


#40
 Dibenzo(a,h)anthracene
 Concen: 0.350 ng
 RT: 25.563 min Scan# 3630
 Delta R.T. -0.006 min
 Lab File: BN033053.D
 Acq: 28 Jul 2024 03:28



Tgt Ion:278 Resp: 16618
 Ion Ratio Lower Upper
 278 100
 139 21.4 16.7 25.1
 279 31.1 24.3 36.5





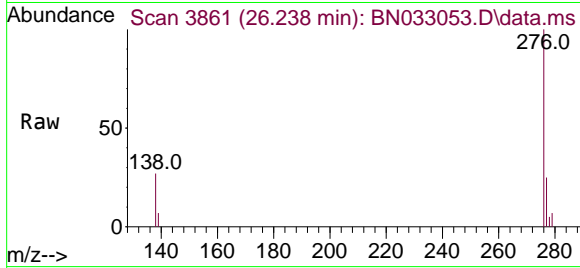
#41
 Benzo(g,h,i)perylene
 Concen: 0.363 ng
 RT: 26.238 min Scan# 3861
 Delta R.T. -0.012 min
 Lab File: BN033053.D
 Acq: 28 Jul 2024 03:28

Instrument :

BNA_N

ClientSampleId :

SSTDCCC0.4EC



Tgt Ion: 276 Resp: 19089

Ion	Ratio	Lower	Upper
276	100		
277	25.3	20.2	30.2
138	27.0	20.5	30.7

Manual Integrations

APPROVED

Reviewed By :Jagrut Upadhyay 07/29/2024
 Supervised By :mohammad ahmed 07/30/2024

