

Data Path : Z:\SVOASRV\HPCHEM1\BNA N\DATA\BN073018\
 Data File : BN002198.D
 Acq On : 30 Jul 2018 22:32
 Operator : JU/SJ
 Sample : J3762-09
 Misc : MDL 0.1PPM
 ALS Vial : 16 Sample Multiplier: 1

Instrument :
 BNA_N
 ClientSampleId :
 MDL-WATER-03-QT3-2018

Manual Integrations
 APPROVED

Sohil
 7/31/2018 3:37:19 PM

Quant Time: Jul 31 11:39:21 2018
 Quant Method : Z:\SVOASRV\HPCHEM1\BNA N\METHODS\8270-SIM-BN073018.M
 Quant Title : ASP BNA STANDARDS FOR 5 POINT CALIBRATION
 QLast Update : Mon Jul 30 16:17:29 2018
 Response via : Initial Calibration

Internal Standards	R.T.	QIon	Response	Conc	Units	Dev(Min)
1) 1,4-Dichlorobenzene-d4	7.70	152	3281	0.40	ng	0.00
7) Naphthalene-d8	10.47	136	13181	0.40	ng	0.00
13) Acenaphthene-d10	14.32	164	6954	0.40	ng	0.00
19) Phenanthrene-d10	17.08	188	13925	0.40	ng	0.01
27) Chrysene-d12	21.27	240	10652	0.40	ng	0.00
34) Perylene-d12	23.50	264	10207	0.40	ng	0.00

System Monitoring Compounds

4) 2-Fluorophenol	5.32	112	2629	0.34	ng	0.00
5) Phenol-d6	6.88	99	2903	0.31	ng	0.00
8) Nitrobenzene-d5	8.86	82	3365	0.34	ng	0.01
11) 2-Methylnaphthalene-d10	12.07	152	7140	0.37	ng	0.00
14) 2,4,6-Tribromophenol	15.84	330	743	0.25	ng	0.01
15) 2-Fluorobiphenyl	12.95	172	10055	0.38	ng	0.01
25) Fluoranthene-d10	19.11	212	12319	0.36	ng	0.00
29) Terphenyl-d14	19.71	244	8086	0.36	ng	0.00

Target Compounds

Target Compounds	R.T.	QIon	Response	Conc	Units	Qvalue
2) 1,4-Dioxane	3.30	88	362	0.098	ng	92
3) n-Nitrosodimethylamine	3.66	42	114m	0.149	ng	
6) bis(2-Chloroethyl)ether	7.14	93	667	0.075	ng	# 86
9) Naphthalene	10.52	128	2766	0.093	ng	# 89
10) Hexachlorobutadiene	10.80	225	602	0.094	ng	# 54
12) 2-Methylnaphthalene	12.14	142	1761	0.088	ng	99
16) Acenaphthylene	14.04	152	2543	0.086	ng	99
17) Acenaphthene	14.39	154	1736	0.091	ng	97
18) Fluorene	15.38	166	2003	0.085	ng	# 79
20) 4-Bromophenyl-phenylether	16.27	248	696	0.088	ng	# 84
21) Hexachlorobenzene	16.39	284	840	0.096	ng	94
22) Pentachlorophenol	16.77	266	79	0.129	ng	# 71
23) Phenanthrene	17.12	178	3056	0.088	ng	98
24) Anthracene	17.22	178	2107	0.074	ng	97
26) Fluoranthene	19.14	202	3089	0.082	ng	98
28) Pyrene	19.50	202	3095	0.098	ng	99
30) Benzo(a)anthracene	21.26	228	2520	0.094	ng	97
31) Chrysene	21.31	228	2813	0.094	ng	97
32) Bis(2-ethylhexyl)phthalate	21.18	149	1164	0.095	ng	# 91
33) Indeno(1,2,3-cd)pyrene	25.74	276	3023	0.107	ng	# 93
35) Benzo(b)fluoranthene	22.84	252	2674	0.089	ng	# 92
36) Benzo(k)fluoranthene	22.88	252	2897	0.093	ng	# 73
37) Benzo(a)pyrene	23.41	252	2465	0.091	ng	# 70
38) Dibenzo(a,h)anthracene	25.75	278	2479	0.094	ng	# 87
39) Benzo(g,h,i)perylene	26.41	276	2662	0.098	ng	# 91

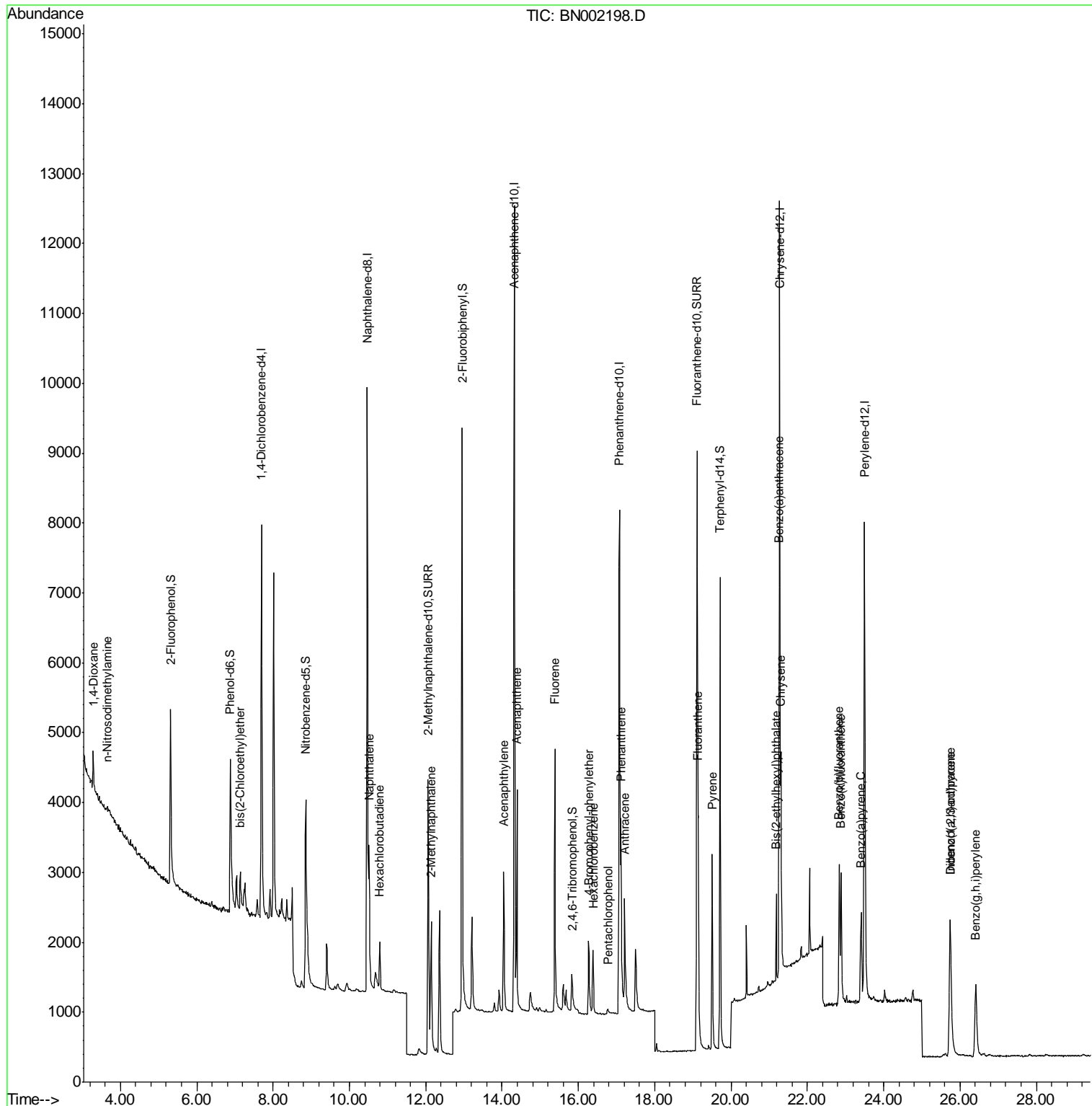
(#) = qualifier out of range (m) = manual integration (+) = signals summed

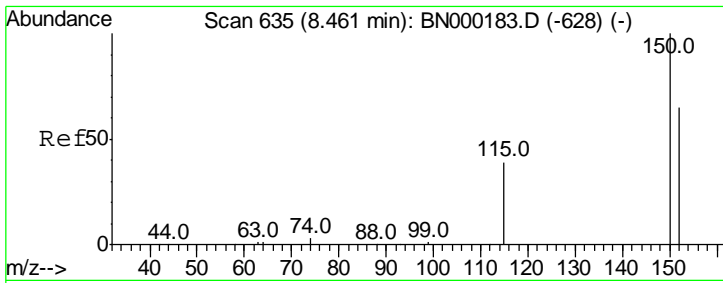
Data Path : Z:\SVOASRV\HPCHEM1\BNA N\DATA\BN073018\
 Data File : BN002198.D
 Acq On : 30 Jul 2018 22:32
 Operator : JU/SJ
 Sample : J3762-09
 Misc : MDL 0.1PPM
 ALS Vial : 16 Sample Multiplier: 1

Instrument :
 BNA_N
 Client Sampled :
 MDL-WATER-03-QT3-2018

Manual Integrations
APPROVED
 Sohil
 7/31/2018 3:37:19 PM

Quant Time: Jul 31 11:39:21 2018
 Quant Method : Z:\SVOASRV\HPCHEM1\BNA N\METHODS\8270-SIM-BN073018.M
 Quant Title : ASP BNA STANDARDS FOR 5 POINT CALIBRATION
 QLast Update : Mon Jul 30 16:17:29 2018
 Response via : Initial Calibration





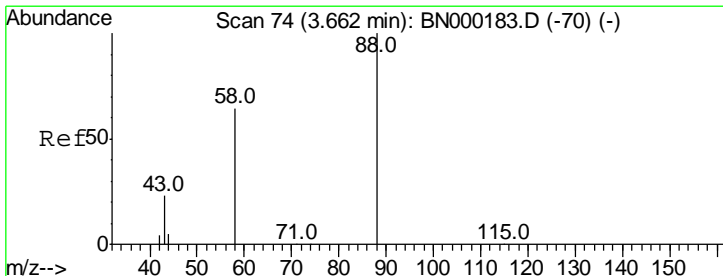
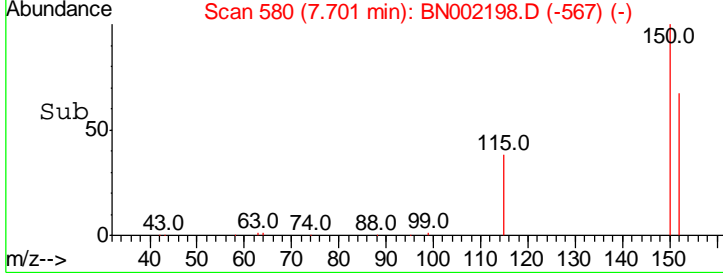
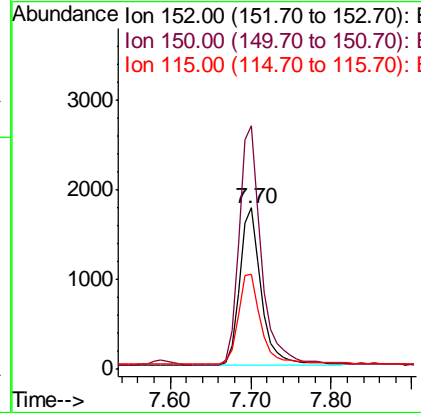
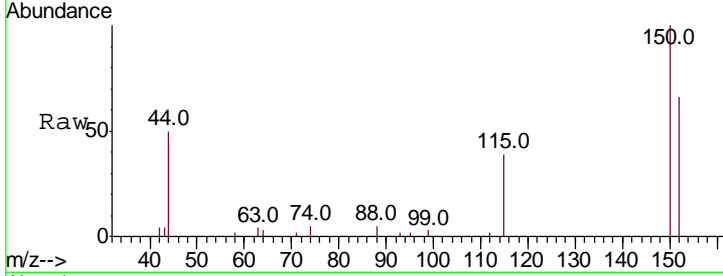
#1
 1,4-Dichlorobenzene-d4
 Concen: 0.400 ng
 RT: 7.70 min Scan# 580
 Delta R.T. 0.01 min
 Lab File: BN002198.D
 Acq: 30 Jul 2018 22:32

Instrument :
 BNA_N
ClientSampled :
 MDL-WATER-03-QT3-2018

Tgt Ion	Resp	Lower	Upper
152	3281		
152	100		
150	150.9	117.2	175.8
115	59.0	57.0	85.6

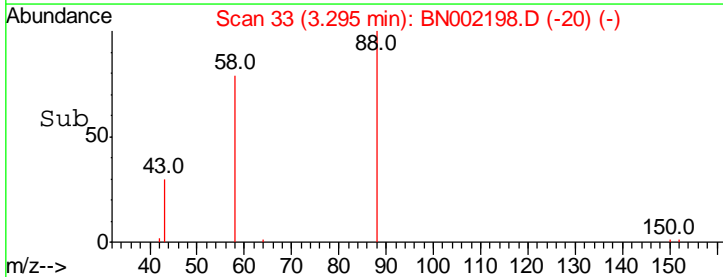
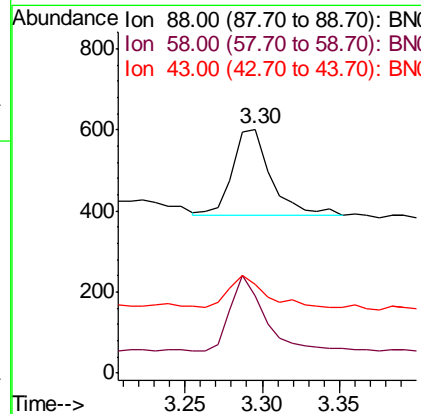
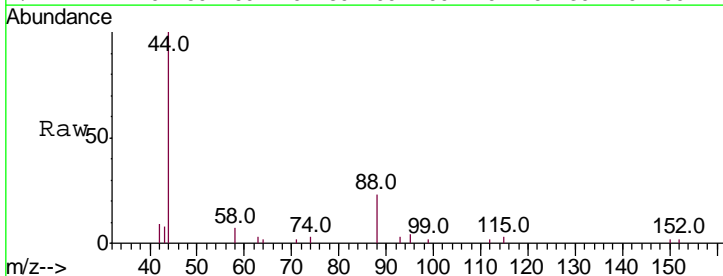
Manual Integrations
APPROVED

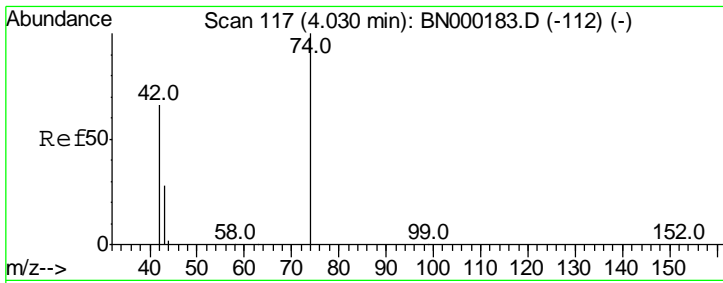
Sohil
 7/31/2018 3:37:19 PM



#2
 1,4-Dioxane
 Concen: 0.098 ng
 RT: 3.30 min Scan# 33
 Delta R.T. 0.01 min
 Lab File: BN002198.D
 Acq: 30 Jul 2018 22:32

Tgt Ion	Resp	Lower	Upper
88	362		
88	100		
58	80.1	72.0	108.0
43	35.4	28.0	42.0





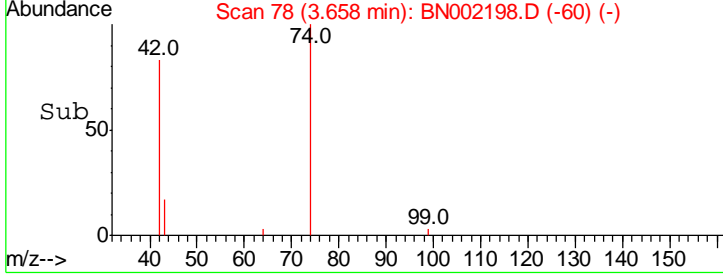
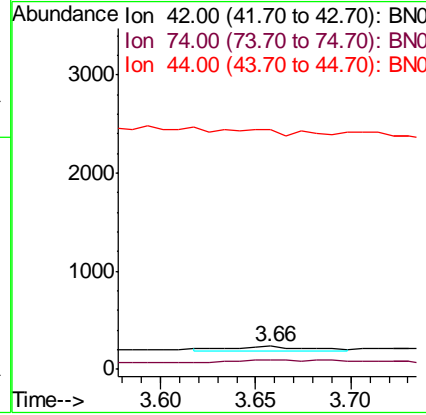
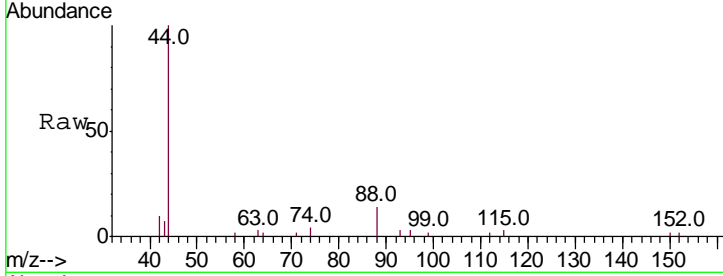
#3
 n-Nitrosodimethylamine
 Concen: 0.149 ng/ml
 RT: 3.66 min Scan# 78
 Delta R.T. 0.05 min
 Lab File: BN002198.D
 Acq: 30 Jul 2018 22:32

Instrument :
 BNA_N
ClientSampled :
 MDL-WATER-03-QT3-2018

Tgt Ion	Ratio	Lower	Upper
42	100		
74	6.1	88.0	132.0#
44	0.0	16.0	24.0#

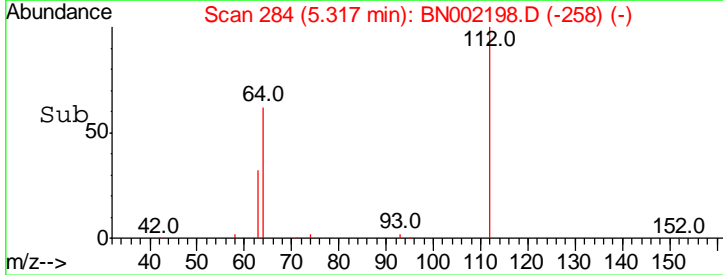
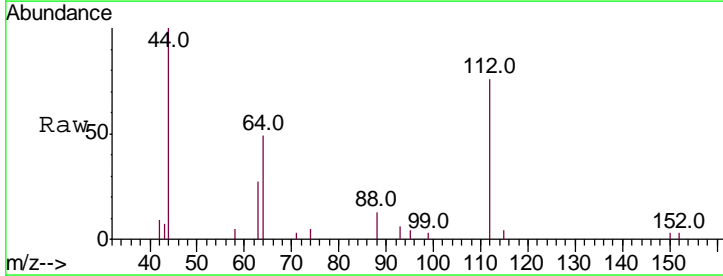
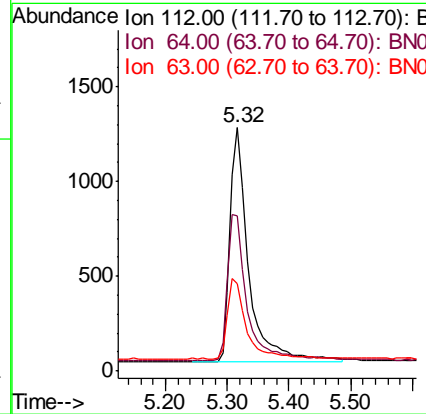
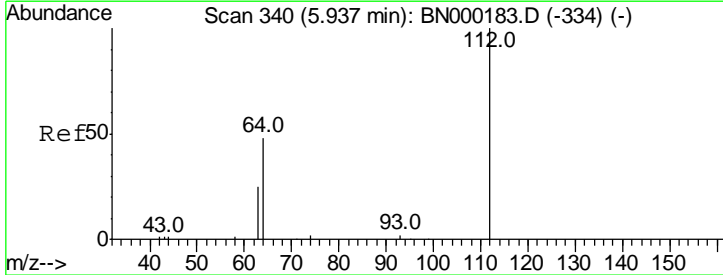
Manual Integrations
APPROVED

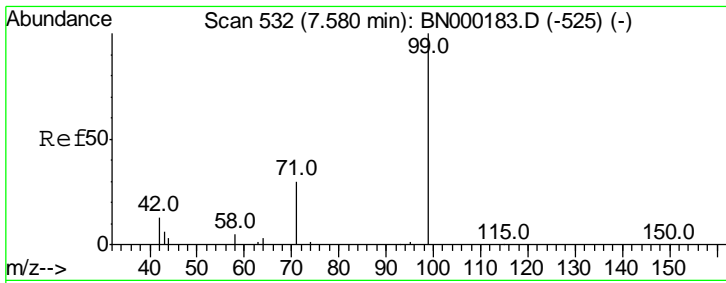
Sohil
 7/31/2018 3:37:19 PM



#4
 2-Fluorophenol
 Concen: 0.343 ng/ml
 RT: 5.32 min Scan# 284
 Delta R.T. 0.01 min
 Lab File: BN002198.D
 Acq: 30 Jul 2018 22:32

Tgt Ion	Ratio	Lower	Upper
112	100		
64	65.7	60.1	90.1
63	35.2	116.8	175.2#



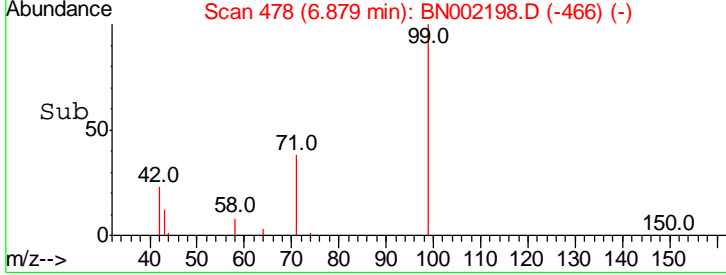
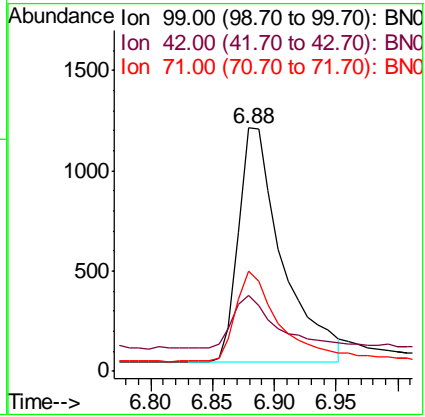
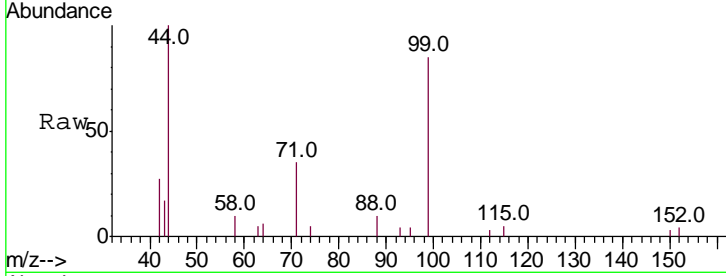


#5
 Phenol-d6
 Concen: 0.312 ng
 RT: 6.88 min Scan# 478
 Delta R.T. -0.00 min
 Lab File: BN002198.D
 Acq: 30 Jul 2018 22:32

Instrument :
 BNA_N
ClientSampled :
 MDL-WATER-03-QT3-2018

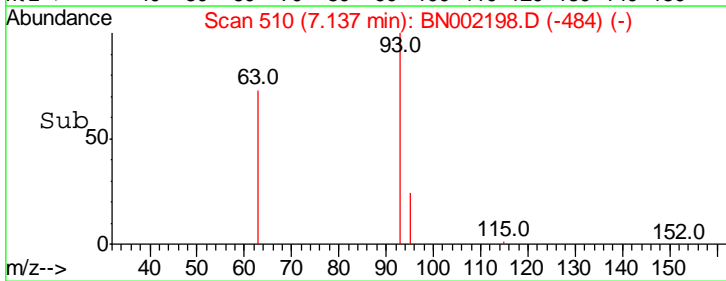
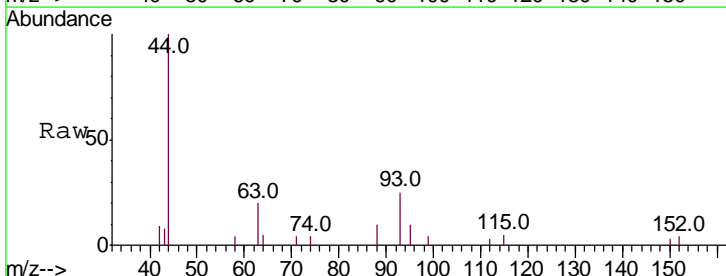
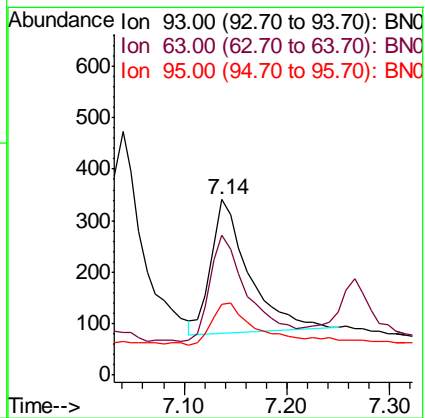
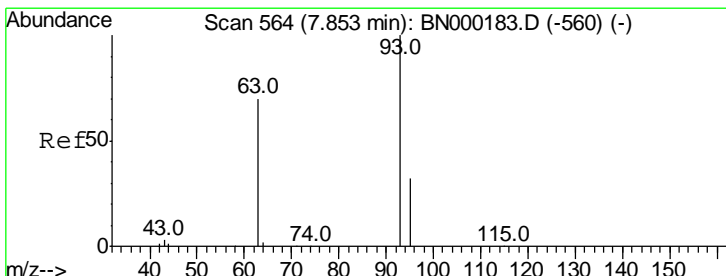
Tgt Ion	Resp	Lower	Upper
99	2903		
99	100		
42	22.4	20.2	30.2
71	37.3	28.4	42.6

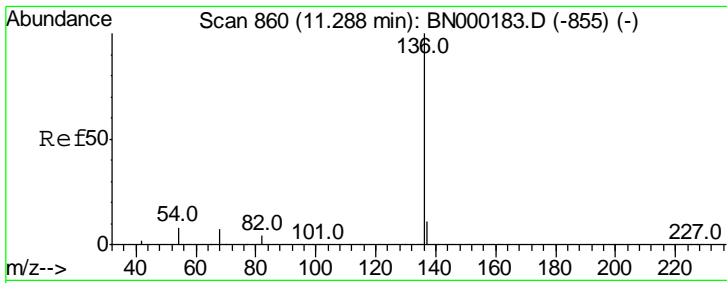
Manual Integrations
APPROVED
 Sohil
 7/31/2018 3:37:19 PM



#6
 bis(2-Chloroethyl)ether
 Concen: 0.075 ng
 RT: 7.14 min Scan# 510
 Delta R.T. 0.01 min
 Lab File: BN002198.D
 Acq: 30 Jul 2018 22:32

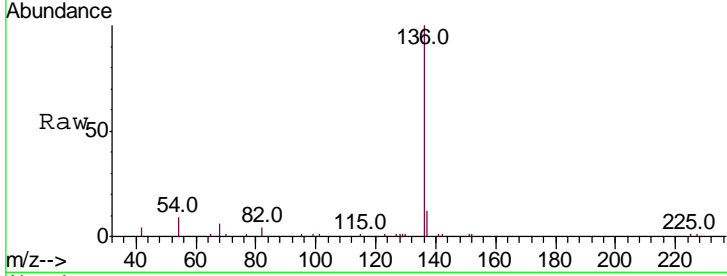
Tgt Ion	Resp	Lower	Upper
93	667		
93	100		
63	80.4	56.0	84.0
95	41.8	25.2	37.8#





#7
 Naphthalene-d8
 Concen: 0.400 ng
 RT: 10.47 min Scan# 835
 Delta R.T. -0.00 min
 Lab File: BN002198.D
 Acq: 30 Jul 2018 22:32

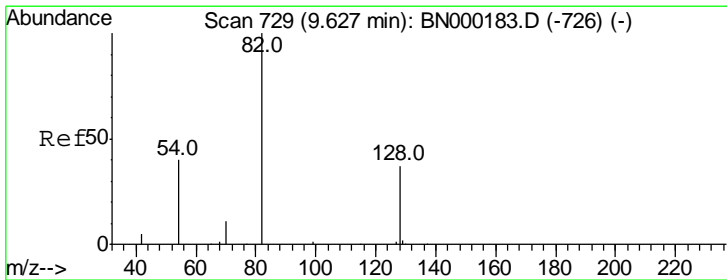
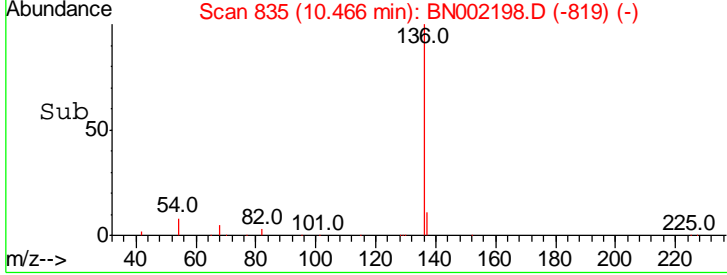
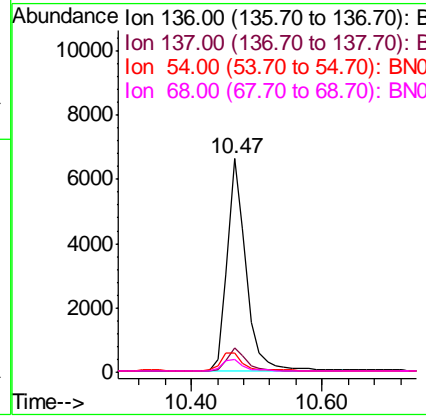
Instrument :
 BNA_N
ClientSampled :
 MDL-WATER-03-QT3-2018



Tgt Ion	Resp	Lower	Upper
136	100		
137	11.5	9.5	14.3
54	9.2	29.1	43.7#
68	6.2	6.2	9.2#

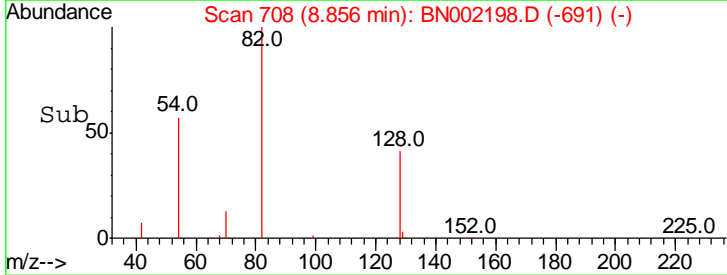
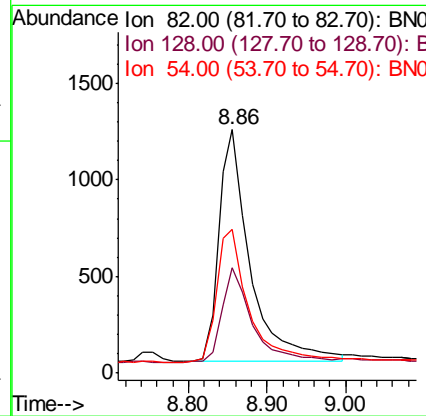
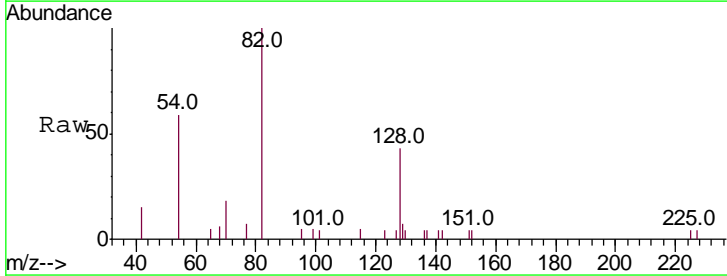
Manual Integrations
APPROVED

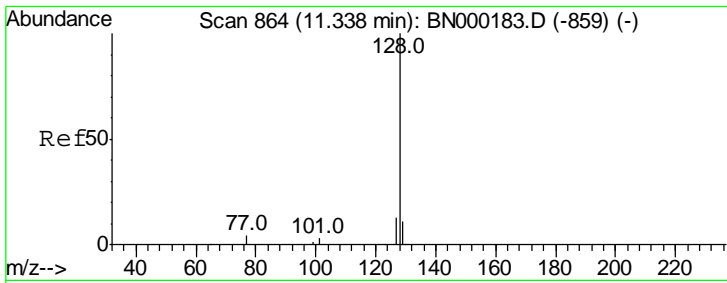
Sohil
 7/31/2018 3:37:19 PM



#8
 Nitrobenzene-d5
 Concen: 0.339 ng
 RT: 8.86 min Scan# 708
 Delta R.T. 0.01 min
 Lab File: BN002198.D
 Acq: 30 Jul 2018 22:32

Tgt Ion	Resp	Lower	Upper
82	100		
128	43.4	150.0	225.0#
54	58.9	154.2	231.4#





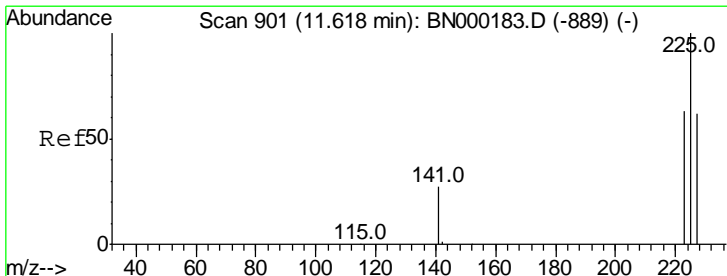
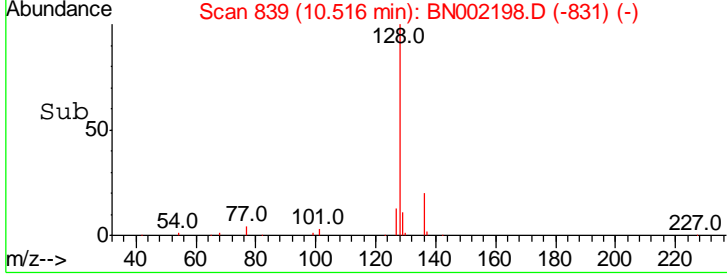
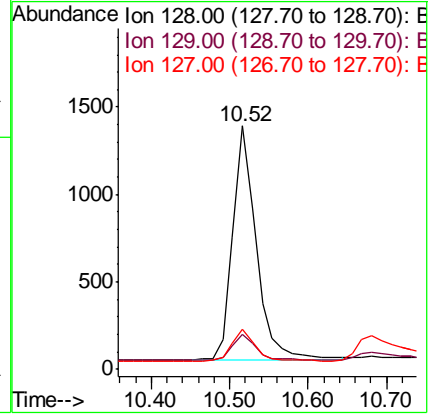
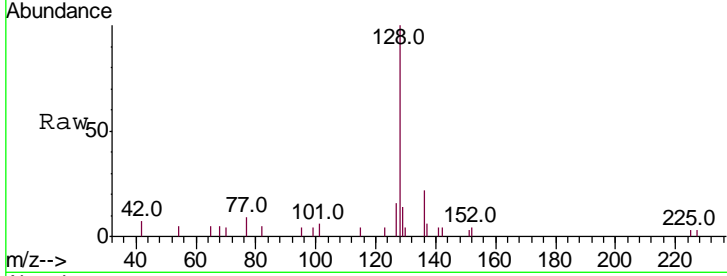
#9
 Naphthalene
 Concen: 0.093 ng
 RT: 10.52 min Scan# 839
 Delta R.T. -0.00 min
 Lab File: BN002198.D
 Acq: 30 Jul 2018 22:32

Instrument :
 BNA_N
ClientSampled :
 MDL-WATER-03-QT3-2018

Tgt Ion	Ratio	Lower	Upper
128	100		
129	14.2	8.0	12.0#
127	16.4	9.6	14.4#

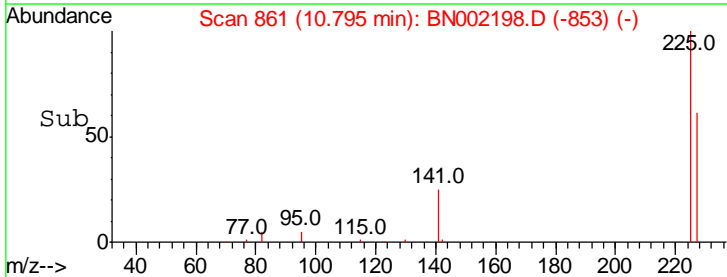
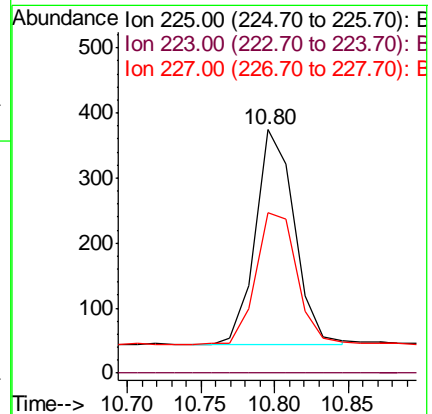
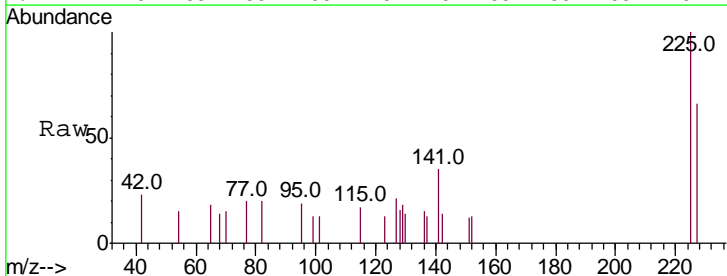
Manual Integrations
APPROVED

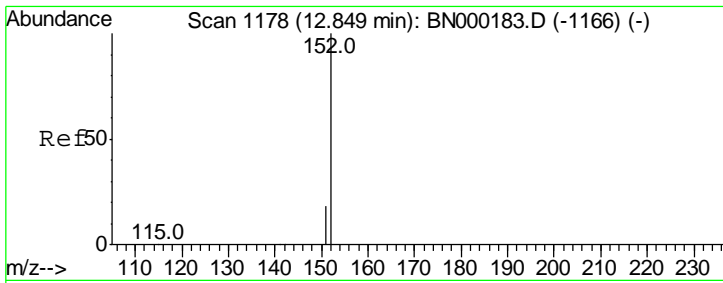
Sohil
 7/31/2018 3:37:19 PM



#10
 Hexachlorobutadiene
 Concen: 0.094 ng
 RT: 10.80 min Scan# 861
 Delta R.T. -0.00 min
 Lab File: BN002198.D
 Acq: 30 Jul 2018 22:32

Tgt Ion	Ratio	Lower	Upper
225	100		
223	0.0	52.0	78.0#
227	65.1	48.0	72.0





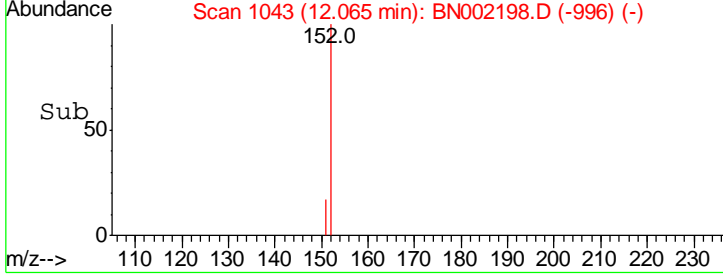
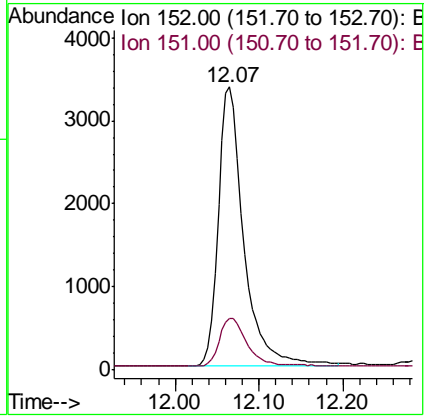
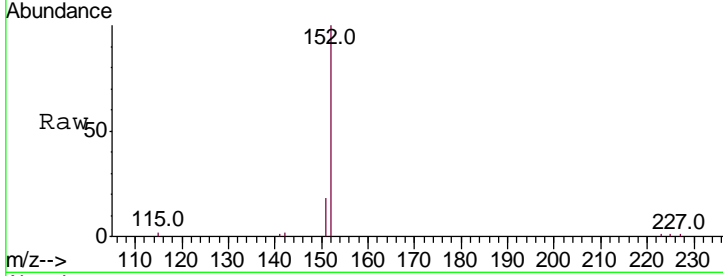
#11
 2-Methylnaphthalene-d10
 Concen: 0.368 ng
 RT: 12.07 min Scan# 1043
 Delta R.T. 0.01 min
 Lab File: BN002198.D
 Acq: 30 Jul 2018 22:32

Instrument :
 BNA_N
ClientSampled :
 MDL-WATER-03-QT3-2018

Tgt Ion:152 Resp: 7140

Ion	Ratio	Lower	Upper
152	100		
151	19.0	15.4	23.0

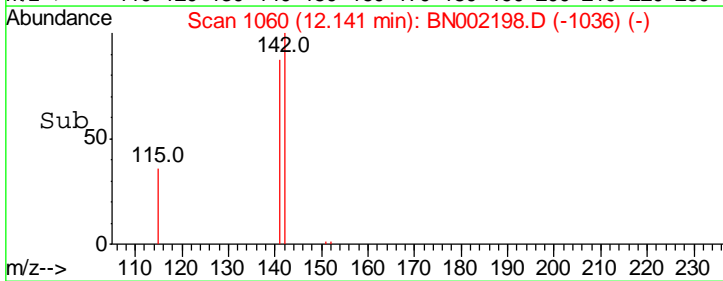
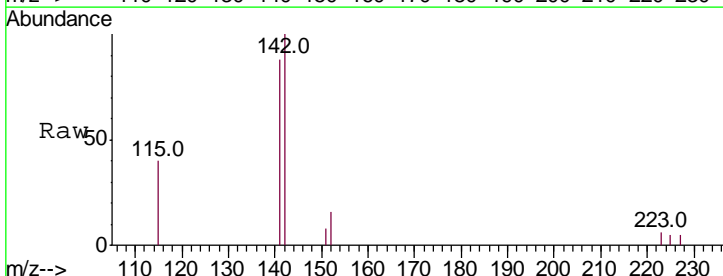
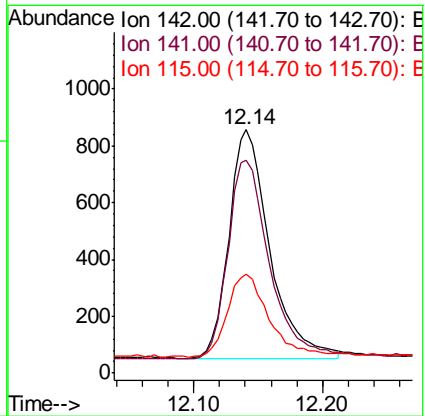
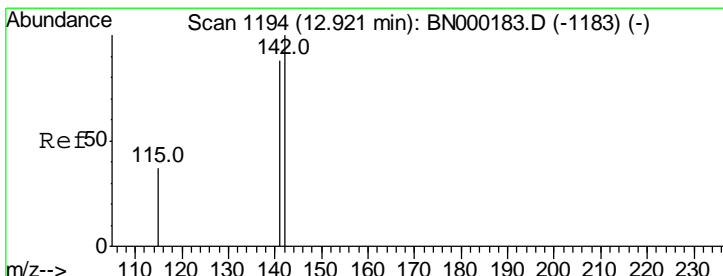
Manual Integrations
APPROVED
 Sohil
 7/31/2018 3:37:19 PM

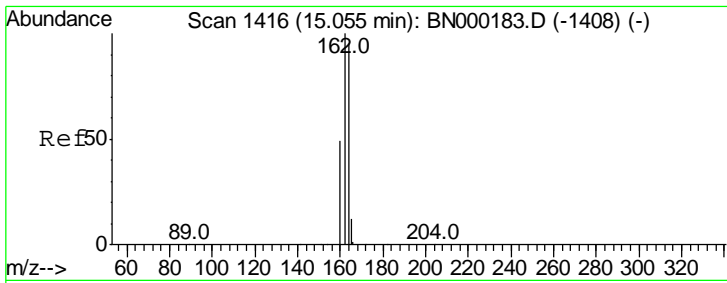


#12
 2-Methylnaphthalene
 Concen: 0.088 ng
 RT: 12.14 min Scan# 1060
 Delta R.T. 0.01 min
 Lab File: BN002198.D
 Acq: 30 Jul 2018 22:32

Tgt Ion:142 Resp: 1761

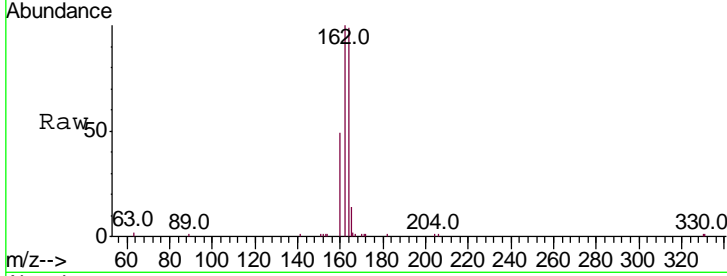
Ion	Ratio	Lower	Upper
142	100		
141	87.6	70.4	105.6
115	40.4	31.7	47.5





#13
 Acenaphthene-d10
 Concen: 0.400 ng
 RT: 14.32 min Scan# 1332
 Delta R.T. -0.00 min
 Lab File: BN002198.D
 Acq: 30 Jul 2018 22:32

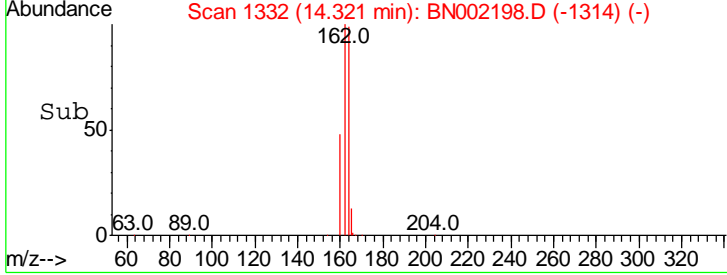
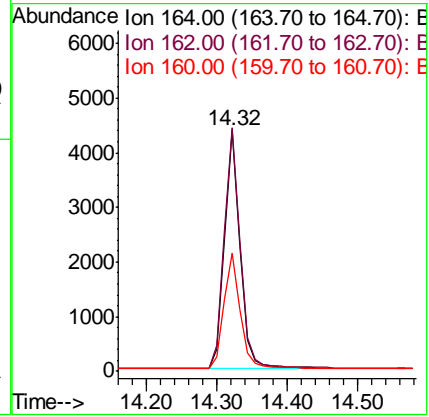
Instrument :
 BNA_N
ClientSampled :
 MDL-WATER-03-QT3-2018



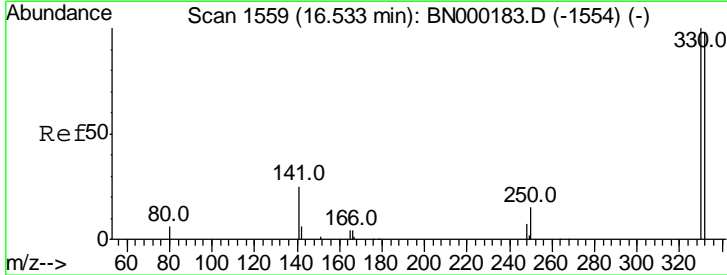
Tgt Ion: 164 Resp: 6954

Ion	Ratio	Lower	Upper
164	100		
162	101.2	83.1	124.7
160	49.2	37.1	55.7

Manual Integrations
APPROVED
 Sohil
 7/31/2018 3:37:19 PM

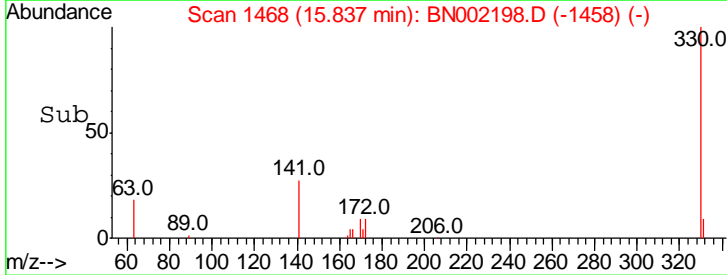
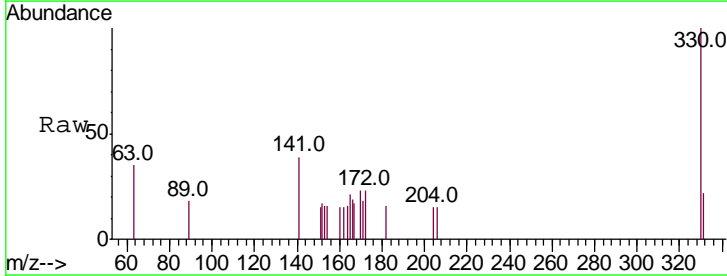
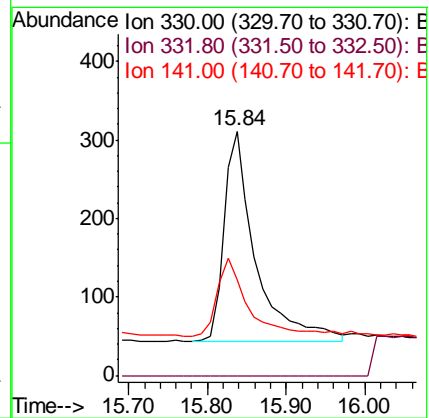


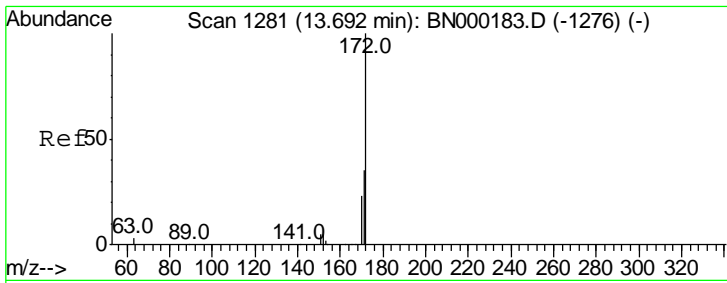
#14
 2,4,6-Tribromophenol
 Concen: 0.250 ng
 RT: 15.84 min Scan# 1468
 Delta R.T. 0.01 min
 Lab File: BN002198.D
 Acq: 30 Jul 2018 22:32



Tgt Ion: 330 Resp: 743

Ion	Ratio	Lower	Upper
330	100		
332	0.0	152.7	229.1#
141	35.4	33.7	50.5





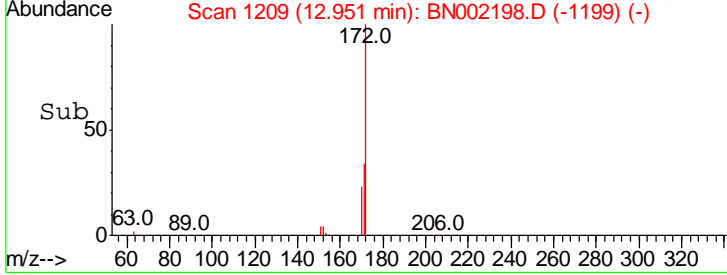
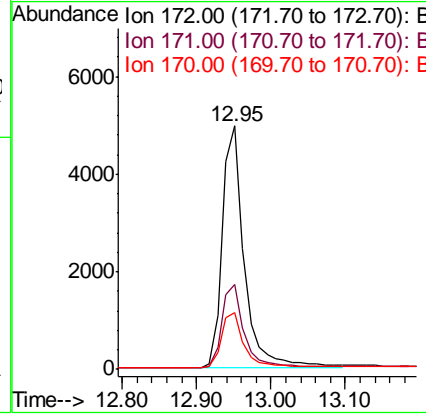
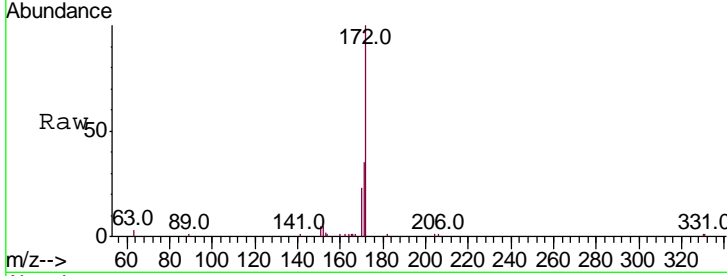
#15
 2-Fluorobiphenyl
 Concen: 0.377 ng
 RT: 12.95 min Scan# 1209
 Delta R.T. 0.01 min
 Lab File: BN002198.D
 Acq: 30 Jul 2018 22:32

Instrument :
 BNA_N
 ClientSampled :
 MDL-WATER-03-QT3-2018

Tgt Ion	Resp	Lower	Upper
172	100		
171	35.0	29.9	44.9
170	23.4	21.8	32.8

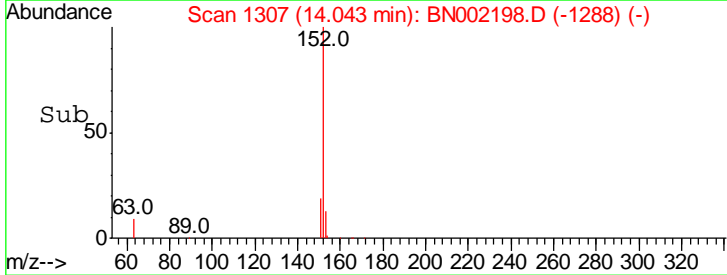
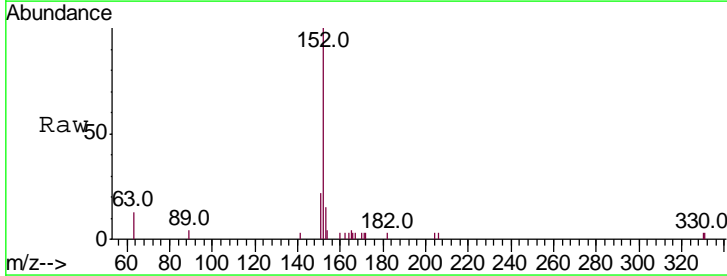
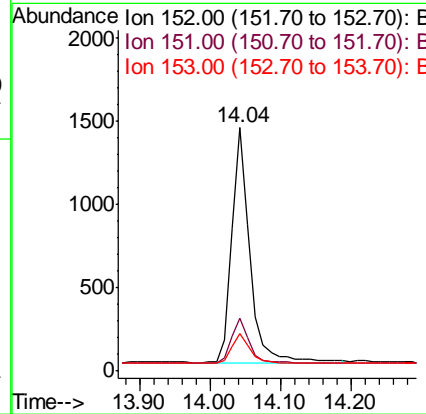
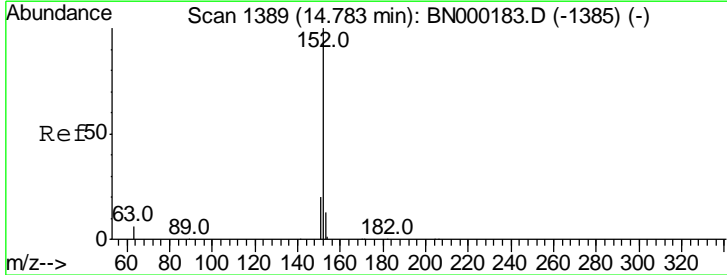
Manual Integrations
 APPROVED

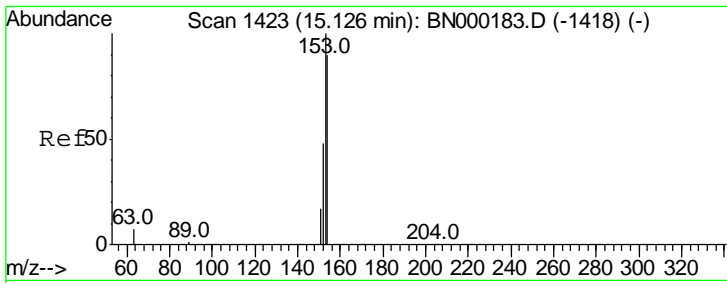
Sohil
 7/31/2018 3:37:19 PM



#16
 Acenaphthylene
 Concen: 0.086 ng
 RT: 14.04 min Scan# 1307
 Delta R.T. 0.01 min
 Lab File: BN002198.D
 Acq: 30 Jul 2018 22:32

Tgt Ion	Resp	Lower	Upper
152	100		
151	19.5	15.7	23.5
153	12.1	10.5	15.7





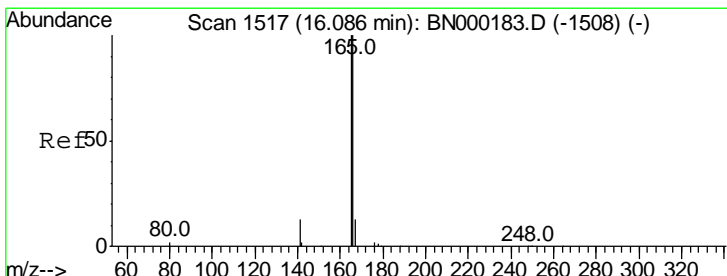
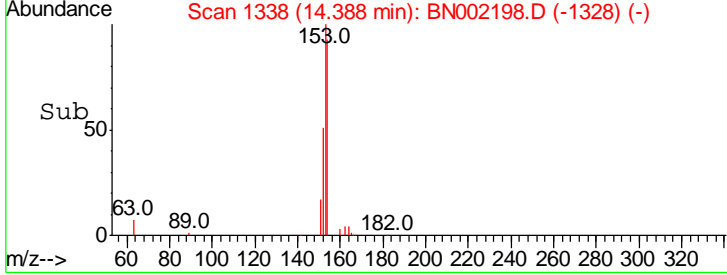
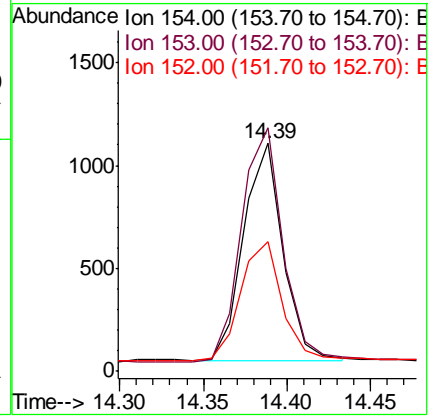
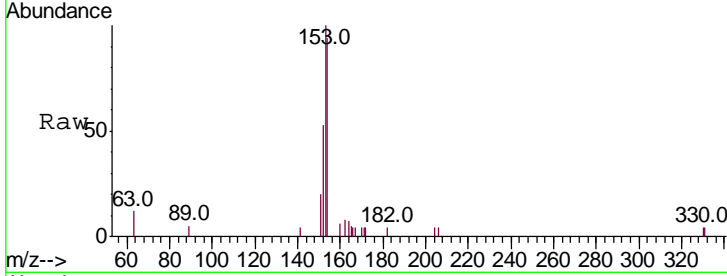
#17
 Acenaphthene
 Concen: 0.091 ng
 RT: 14.39 min Scan# 1338
 Delta R.T. 0.01 min
 Lab File: BN002198.D
 Acq: 30 Jul 2018 22:32

Instrument :
 BNA_N
 ClientSampled :
 MDL-WATER-03-QT3-2018

Tgt Ion	Resp	Lower	Upper
154	100		
153	112.1	89.2	133.8
152	57.5	42.0	63.0

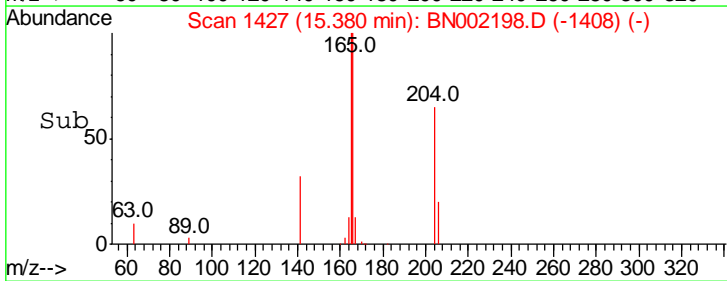
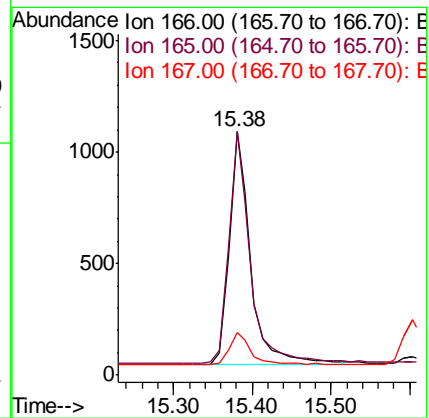
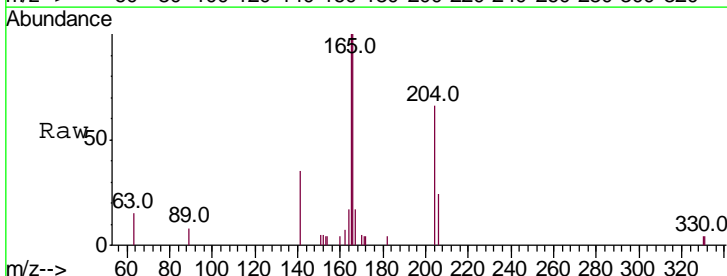
Manual Integrations
 APPROVED

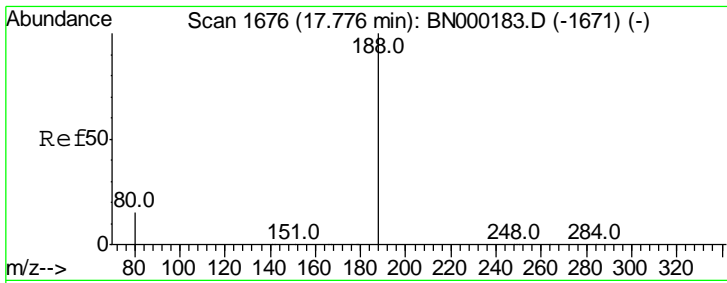
Sohil
 7/31/2018 3:37:19 PM



#18
 Fluorene
 Concen: 0.085 ng
 RT: 15.38 min Scan# 1427
 Delta R.T. 0.01 min
 Lab File: BN002198.D
 Acq: 30 Jul 2018 22:32

Tgt Ion	Resp	Lower	Upper
166	100		
165	99.6	77.8	116.6
167	14.0	42.4	63.6#





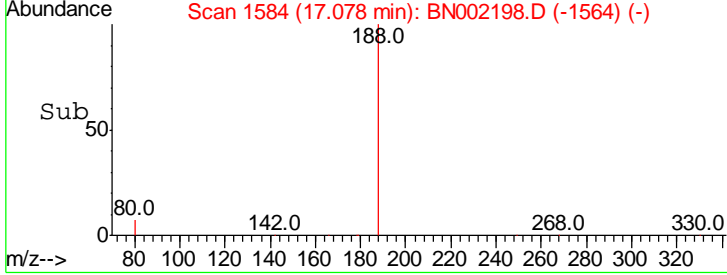
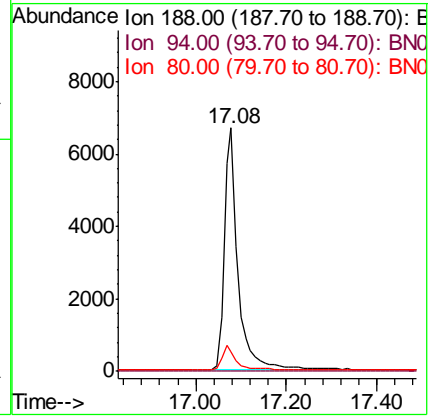
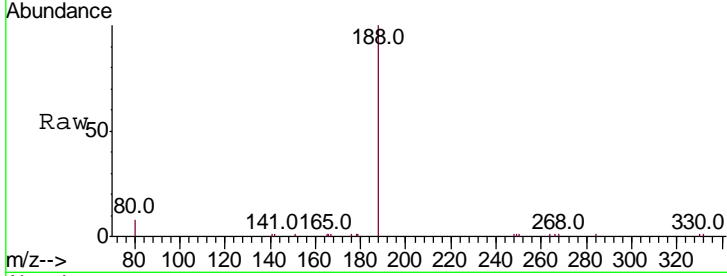
#19
 Phenanthrene-d10
 Concen: 0.400 ng
 RT: 17.08 min Scan# 1584
 Delta R.T. 0.01 min
 Lab File: BN002198.D
 Acq: 30 Jul 2018 22:32

Instrument :
 BNA_N
Client Sampled :
 MDL-WATER-03-QT3-2018

Tgt Ion	Ratio	Lower	Upper
188	100		
94	0.0	3.9	5.9#
80	8.2	3.6	5.4#

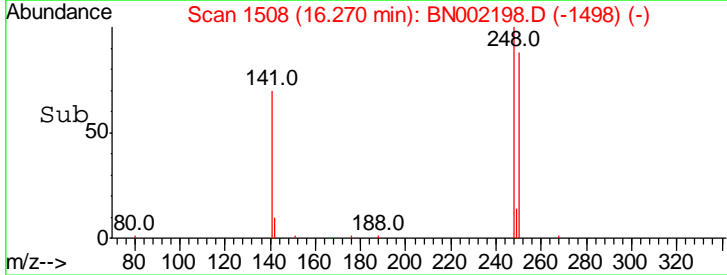
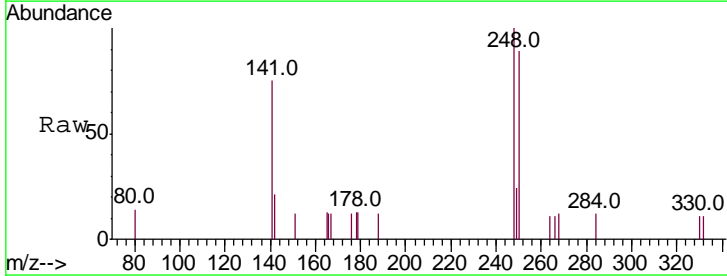
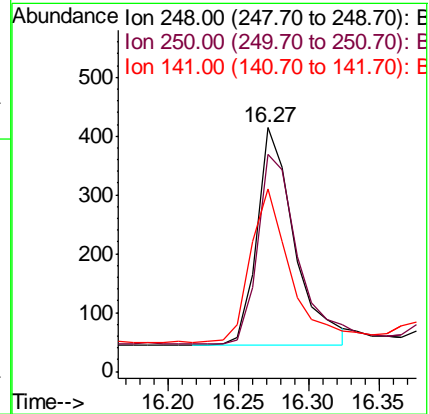
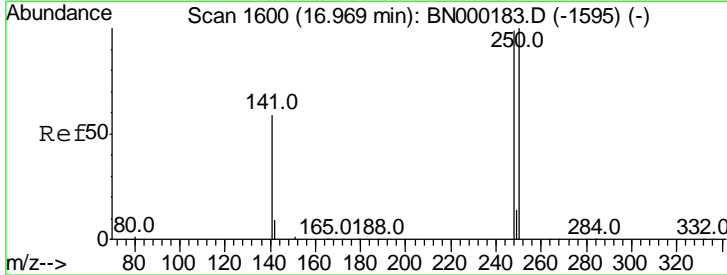
Manual Integrations
APPROVED

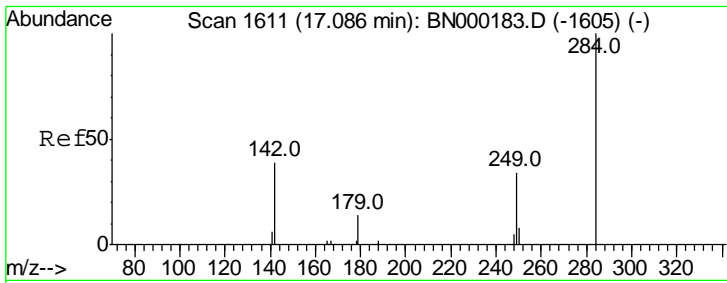
Sohil
 7/31/2018 3:37:19 PM



#20
 4-Bromophenyl-phenylether
 Concen: 0.088 ng
 RT: 16.27 min Scan# 1508
 Delta R.T. 0.01 min
 Lab File: BN002198.D
 Acq: 30 Jul 2018 22:32

Tgt Ion	Ratio	Lower	Upper
248	100		
250	89.1	62.7	94.1
141	75.1	48.2	72.2#





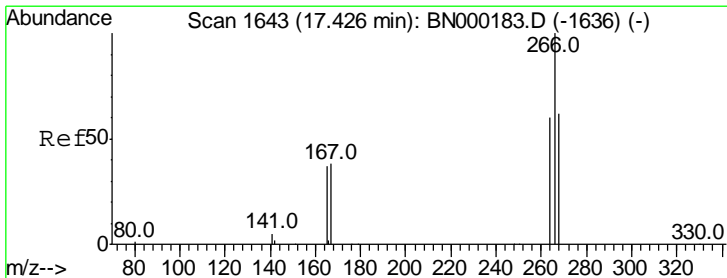
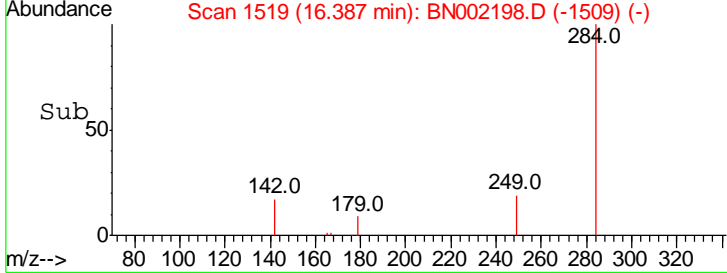
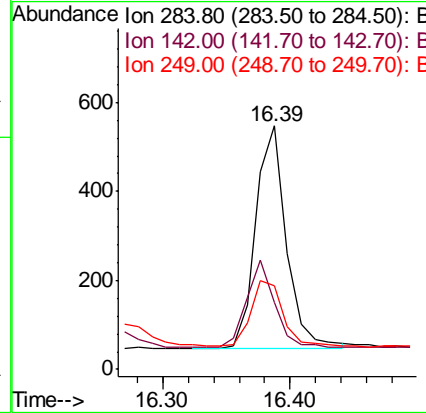
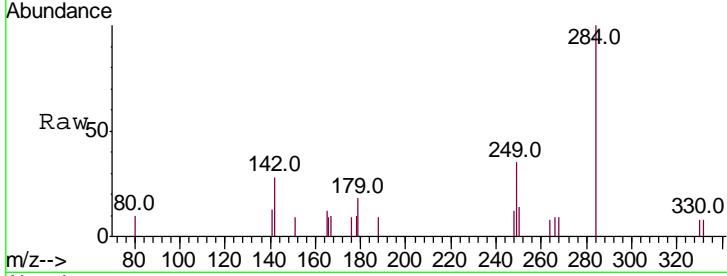
#21
 Hexachlorobenzene
 Concen: 0.096 ng
 RT: 16.39 min Scan# 1519
 Delta R.T. 0.01 min
 Lab File: BN002198.D
 Acq: 30 Jul 2018 22:32

Instrument :
 BNA_N
ClientSampled :
 MDL-WATER-03-QT3-2018

Tgt Ion	Ratio	Lower	Upper
284	100		
142	34.8	32.0	48.0
249	30.8	24.0	36.0

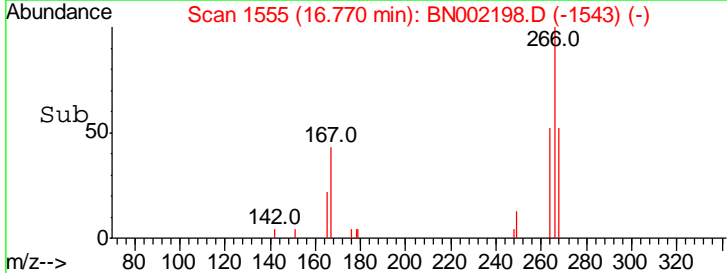
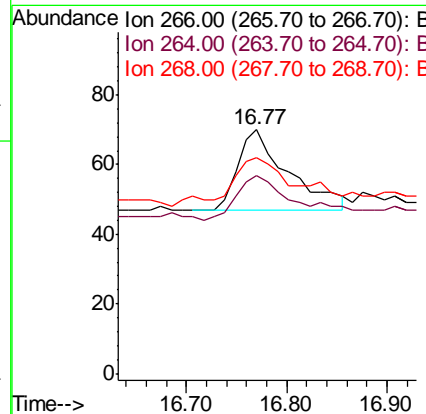
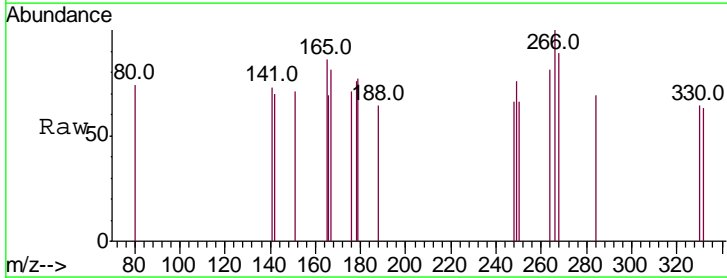
Manual Integrations
APPROVED

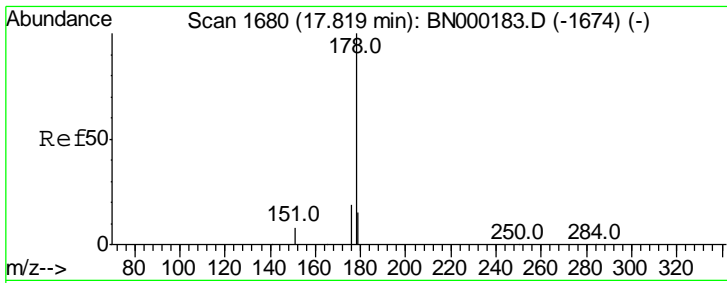
Sohil
 7/31/2018 3:37:19 PM



#22
 Pentachlorophenol
 Concen: 0.129 ng
 RT: 16.77 min Scan# 1555
 Delta R.T. 0.03 min
 Lab File: BN002198.D
 Acq: 30 Jul 2018 22:32

Tgt Ion	Ratio	Lower	Upper
266	100		
264	81.4	48.0	72.0#
268	88.6	52.0	78.0#



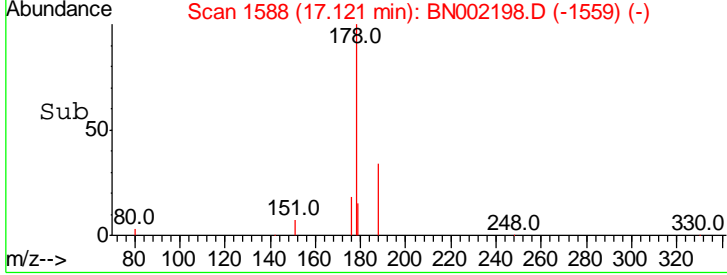
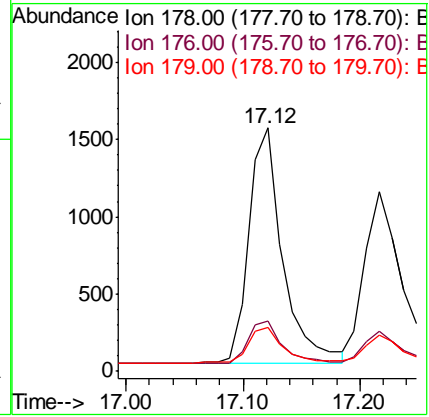
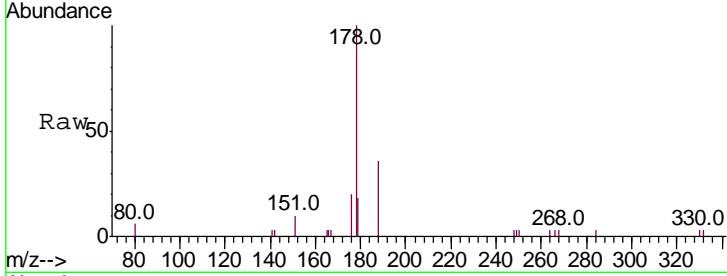


#23
 Phenanthrene
 Concen: 0.088 ng
 RT: 17.12 min Scan# 1588
 Delta R.T. 0.01 min
 Lab File: BN002198.D
 Acq: 30 Jul 2018 22:32

Instrument :
 BNA_N
 ClientSampled :
 MDL-WATER-03-QT3-2018

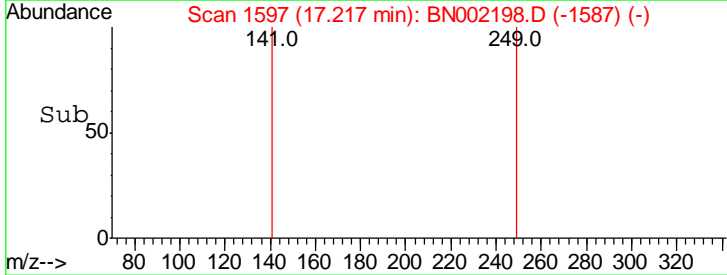
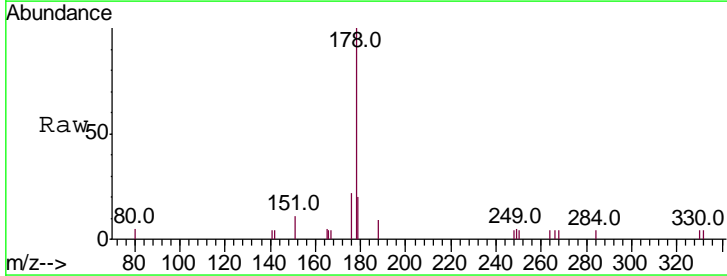
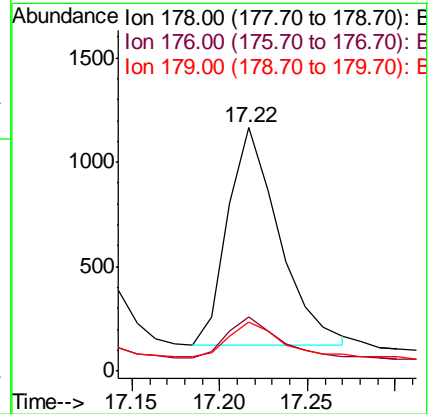
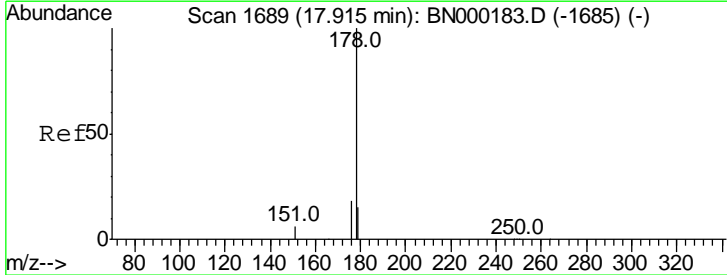
Tgt Ion	Resp	Lower	Upper
178	100		
176	18.7	15.1	22.7
179	16.3	11.8	17.6

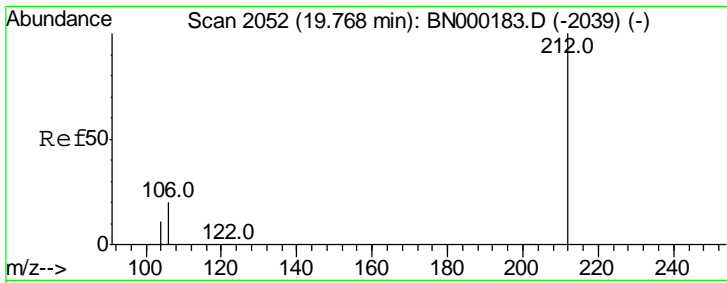
Manual Integrations
APPROVED
 Sohil
 7/31/2018 3:37:19 PM



#24
 Anthracene
 Concen: 0.074 ng
 RT: 17.22 min Scan# 1597
 Delta R.T. 0.01 min
 Lab File: BN002198.D
 Acq: 30 Jul 2018 22:32

Tgt Ion	Resp	Lower	Upper
178	100		
176	18.5	12.8	19.2
179	15.9	13.0	19.6





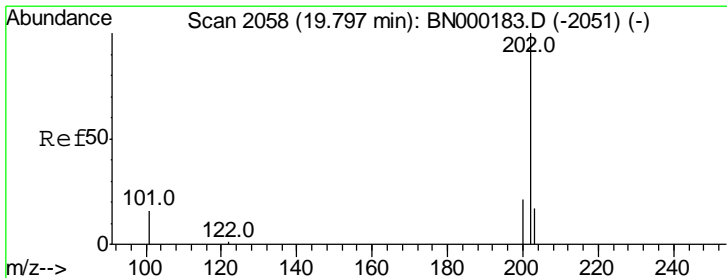
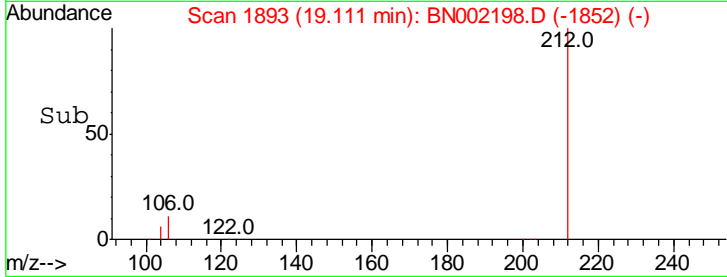
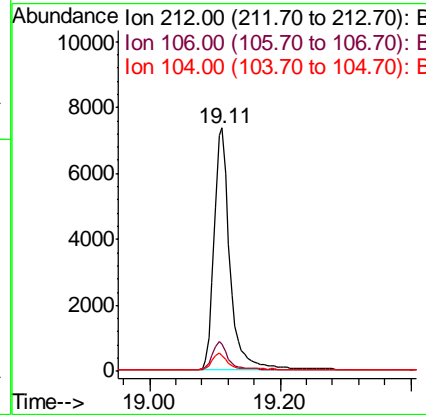
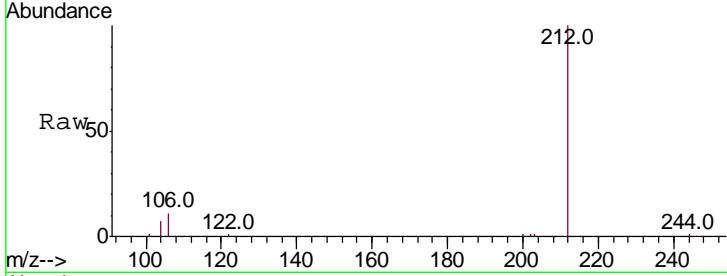
#25
 Fluoranthene-d10
 Concen: 0.358 ng
 RT: 19.11 min Scan# 1893
 Delta R.T. 0.00 min
 Lab File: BN002198.D
 Acq: 30 Jul 2018 22:32

Instrument :
 BNA_N
 ClientSampled :
 MDL-WATER-03-QT3-2018

Tgt Ion	Resp	Lower	Upper
212	100		
106	11.4	2.8	4.2#
104	6.5	1.6	2.4#

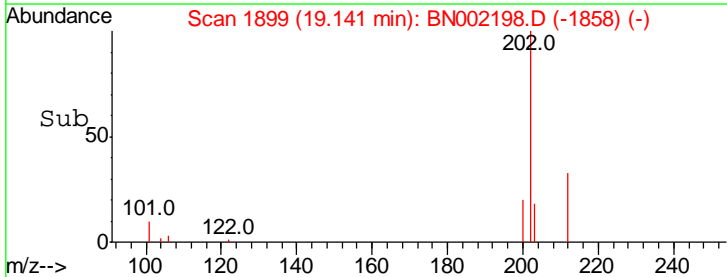
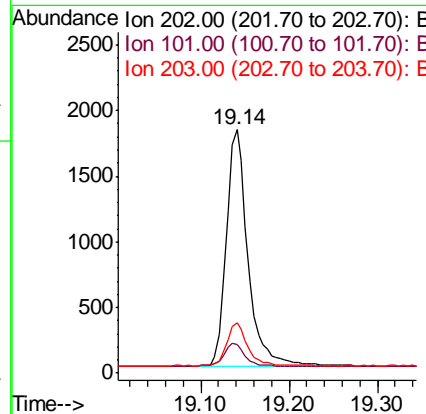
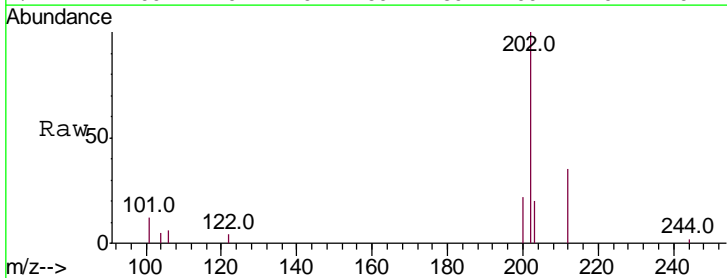
Manual Integrations
 APPROVED

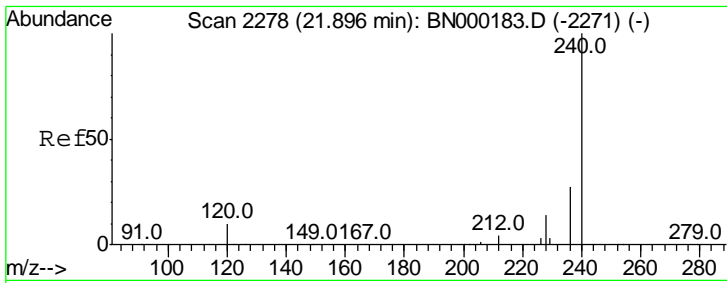
Sohil
 7/31/2018 3:37:19 PM



#26
 Fluoranthene
 Concen: 0.082 ng
 RT: 19.14 min Scan# 1899
 Delta R.T. 0.00 min
 Lab File: BN002198.D
 Acq: 30 Jul 2018 22:32

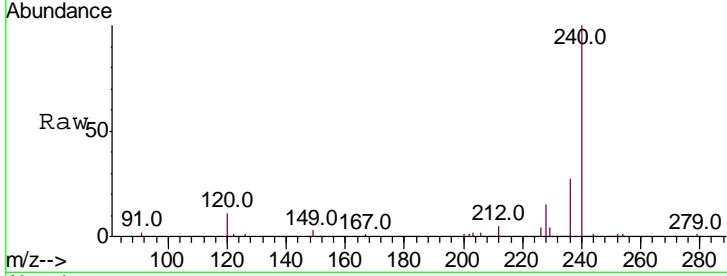
Tgt Ion	Resp	Lower	Upper
202	100		
101	10.5	9.8	14.8
203	17.4	13.7	20.5





#27
 Chrysene-d12
 Concen: 0.400 ng
 RT: 21.27 min Scan# 2192
 Delta R.T. -0.00 min
 Lab File: BN002198.D
 Acq: 30 Jul 2018 22:32

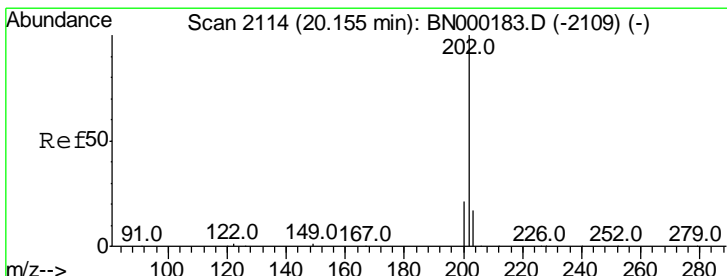
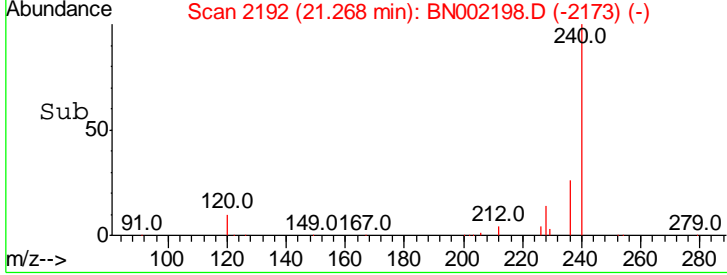
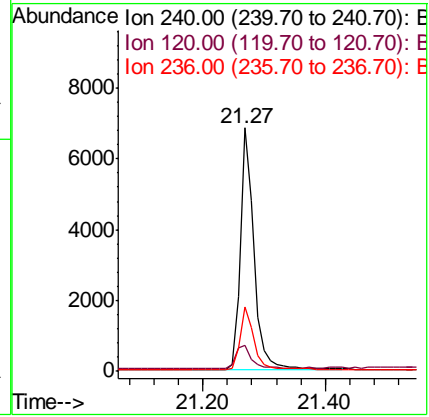
Instrument :
 BNA_N
Client Sampled :
 MDL-WATER-03-QT3-2018



Tgt Ion: 240 Resp: 10652

Ion	Ratio	Lower	Upper
240	100		
120	10.9	5.5	8.3#
236	26.6	20.7	31.1

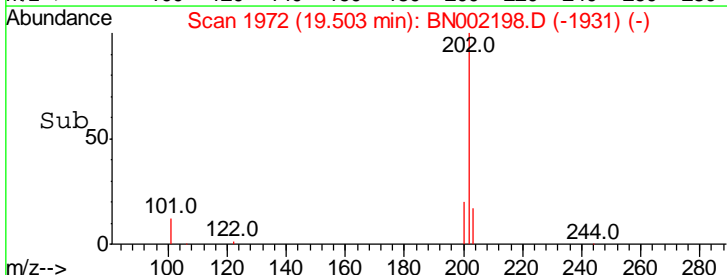
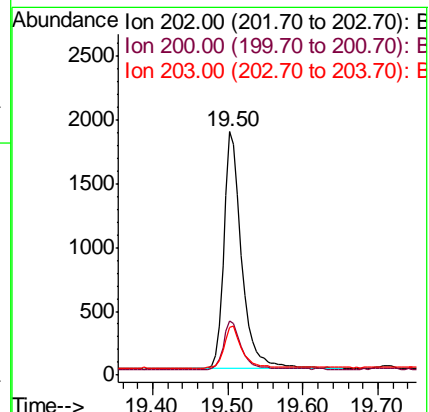
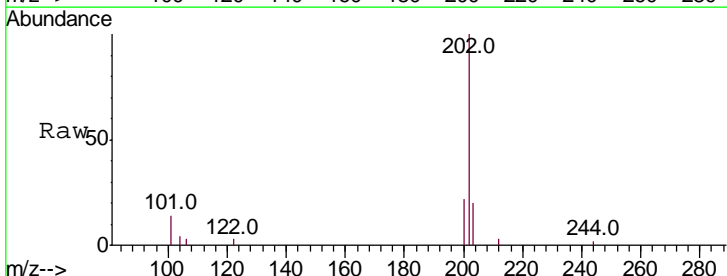
Manual Integrations
APPROVED
 Sohil
 7/31/2018 3:37:19 PM

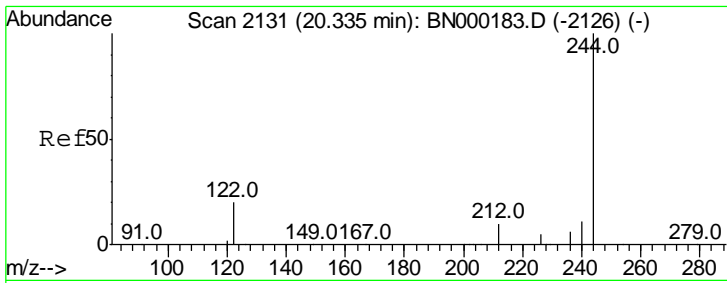


#28
 Pyrene
 Concen: 0.098 ng
 RT: 19.50 min Scan# 1972
 Delta R.T. 0.00 min
 Lab File: BN002198.D
 Acq: 30 Jul 2018 22:32

Tgt Ion: 202 Resp: 3095

Ion	Ratio	Lower	Upper
202	100		
200	20.5	16.6	25.0
203	17.4	13.8	20.8



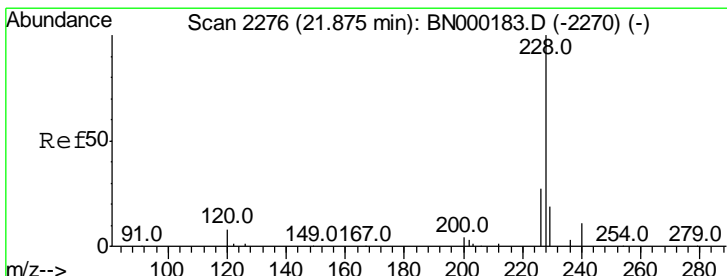
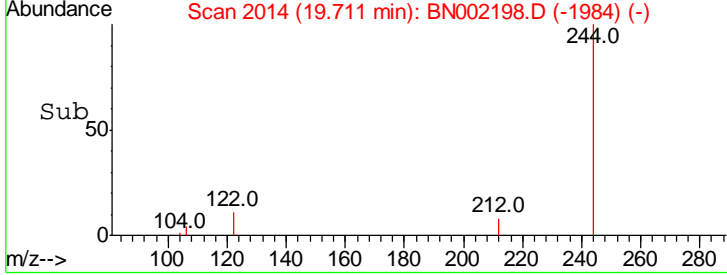
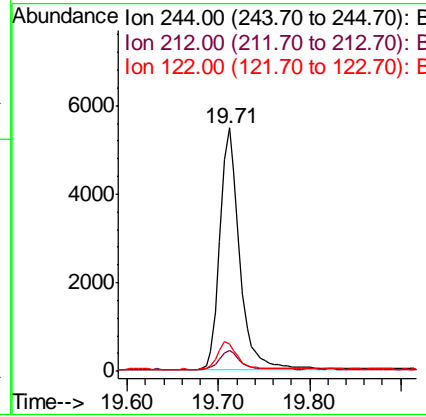
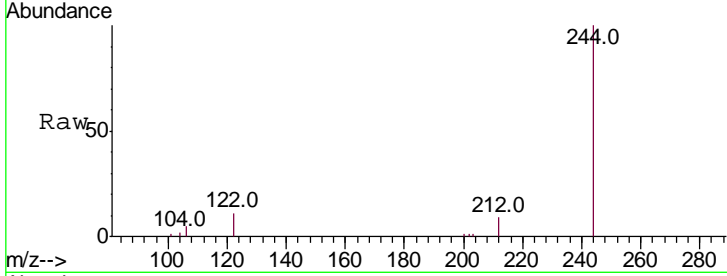


#29
 Terphenyl-d14
 Concen: 0.355 ng
 RT: 19.71 min Scan# 2014
 Delta R.T. -0.00 min
 Lab File: BN002198.D
 Acq: 30 Jul 2018 22:32

Instrument :
 BNA_N
Client Sampled :
 MDL-WATER-03-QT3-2018

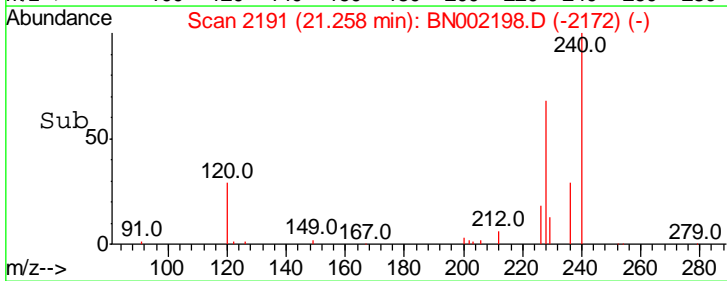
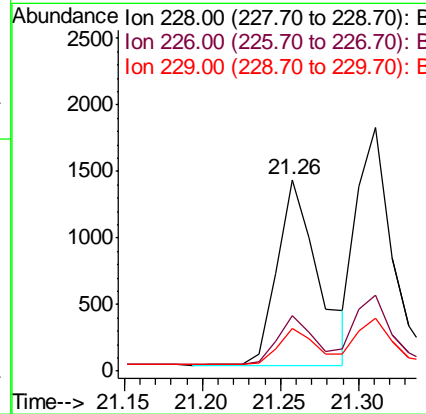
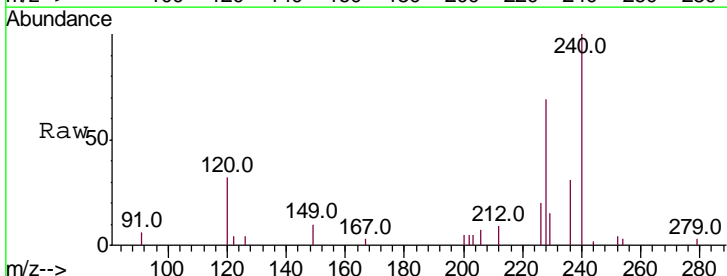
Tgt Ion	Ratio	Lower	Upper
244	100		
212	8.6	25.4	38.0
122	11.4	8.1	12.1

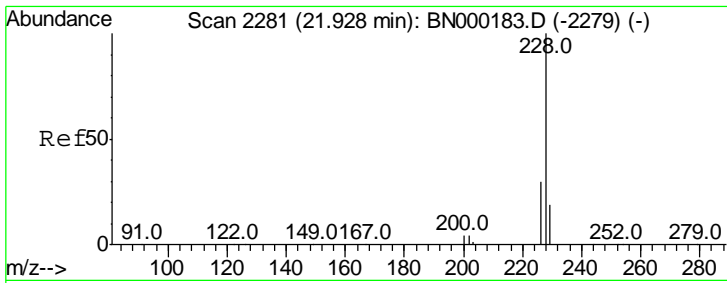
Manual Integrations
APPROVED
 Sohil
 7/31/2018 3:37:19 PM



#30
 Benzo(a)anthracene
 Concen: 0.094 ng
 RT: 21.26 min Scan# 2191
 Delta R.T. -0.00 min
 Lab File: BN002198.D
 Acq: 30 Jul 2018 22:32

Tgt Ion	Ratio	Lower	Upper
228	100		
226	29.0	24.0	36.0
229	22.3	16.0	24.0





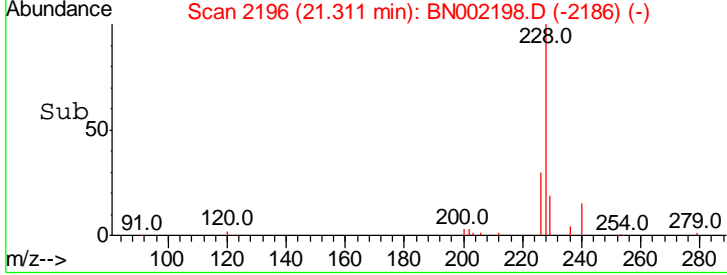
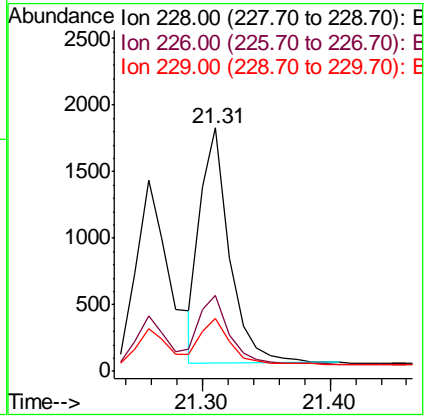
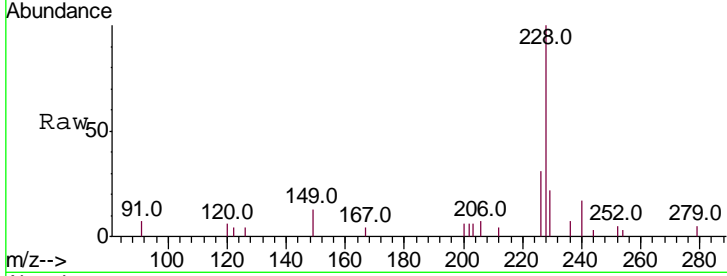
#31
 Chrysene
 Concen: 0.094 ng
 RT: 21.31 min Scan# 2196
 Delta R.T. 0.01 min
 Lab File: BN002198.D
 Acq: 30 Jul 2018 22:32

Instrument :
 BNA_N
Client Sampled :
 MDL-WATER-03-QT3-2018

Tgt Ion	Resp	Lower	Upper
228	100		
226	31.4	24.0	36.0
229	21.6	16.0	24.0

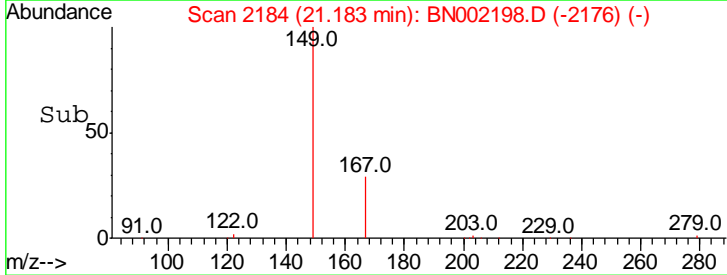
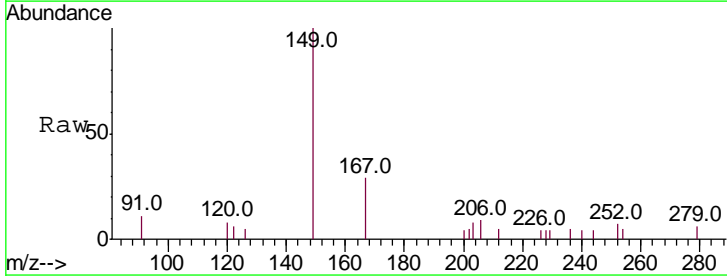
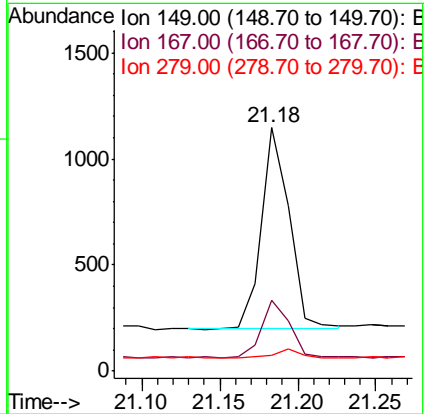
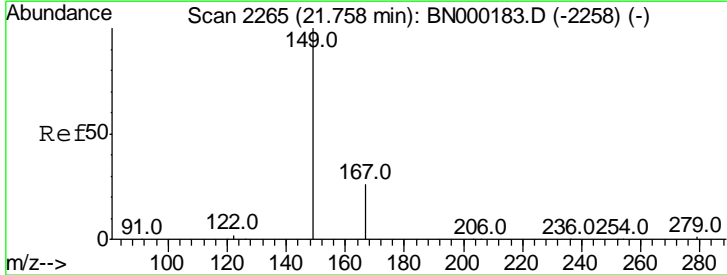
Manual Integrations
APPROVED

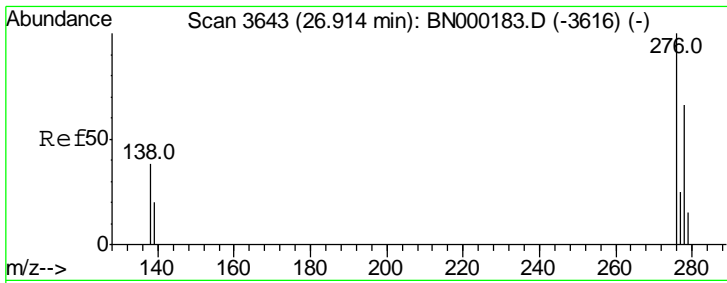
Sohil
 7/31/2018 3:37:19 PM



#32
 Bis(2-ethylhexyl)phthalate
 Concen: 0.095 ng
 RT: 21.18 min Scan# 2184
 Delta R.T. -0.01 min
 Lab File: BN002198.D
 Acq: 30 Jul 2018 22:32

Tgt Ion	Resp	Lower	Upper
149	100		
167	29.6	20.0	30.0
279	4.6	1.6	2.4#





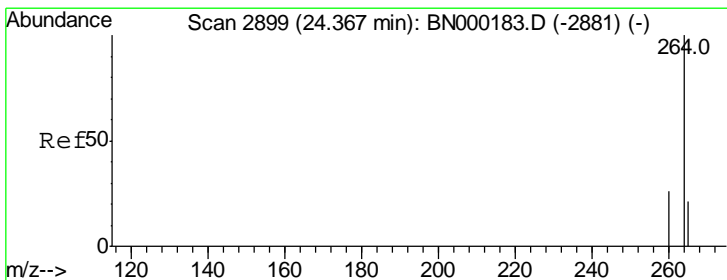
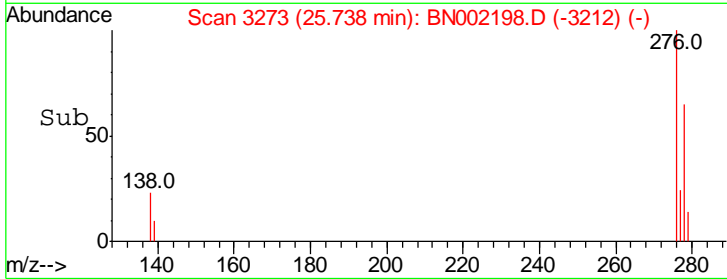
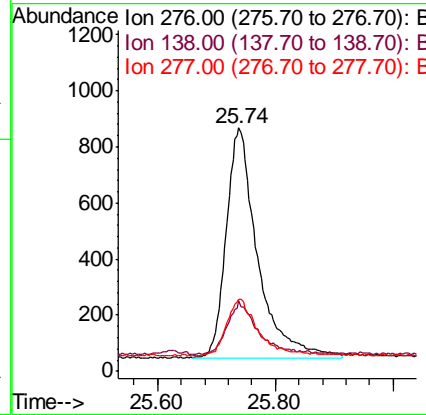
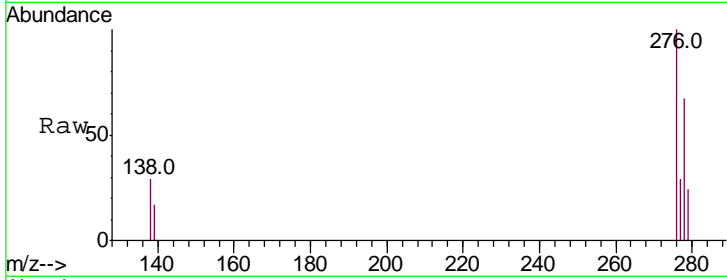
#33
 Indeno(1,2,3-cd)pyrene
 Concen: 0.107 ng
 RT: 25.74 min Scan# 3273
 Delta R.T. 0.01 min
 Lab File: BN002198.D
 Acq: 30 Jul 2018 22:32

Instrument :
 BNA_N
 ClientSampled :
 MDL-WATER-03-QT3-2018

Tgt Ion	Resp	Lower	Upper
276	3023		
276	100		
138	21.2	22.5	33.7#
277	25.1	19.9	29.9

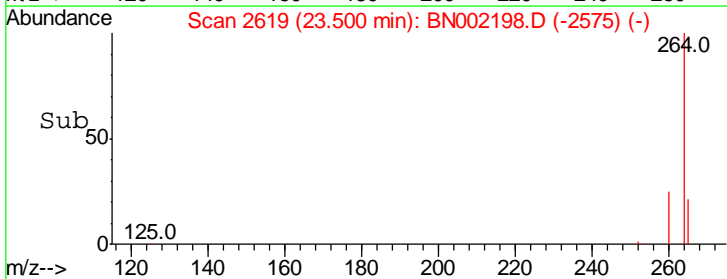
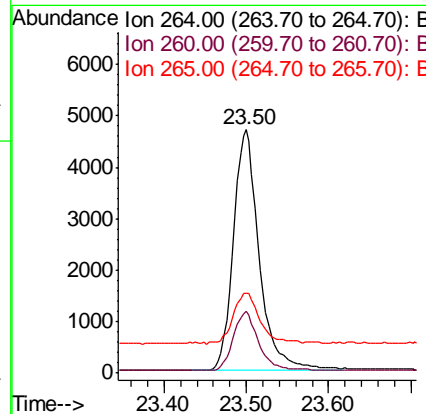
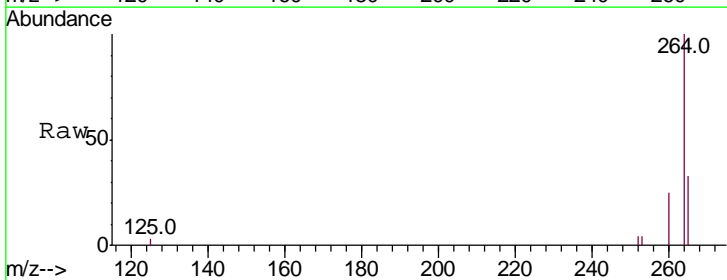
Manual Integrations
 APPROVED

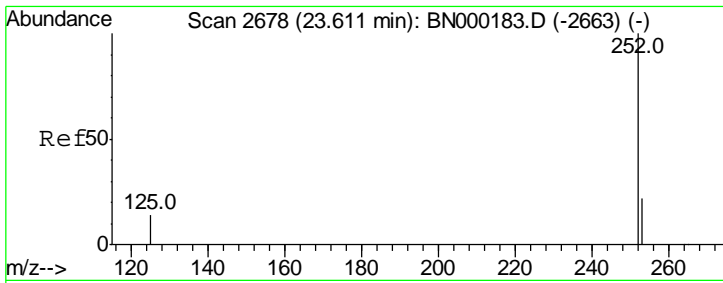
Sohil
 7/31/2018 3:37:19 PM



#34
 Perylene-d12
 Concen: 0.400 ng
 RT: 23.50 min Scan# 2619
 Delta R.T. -0.00 min
 Lab File: BN002198.D
 Acq: 30 Jul 2018 22:32

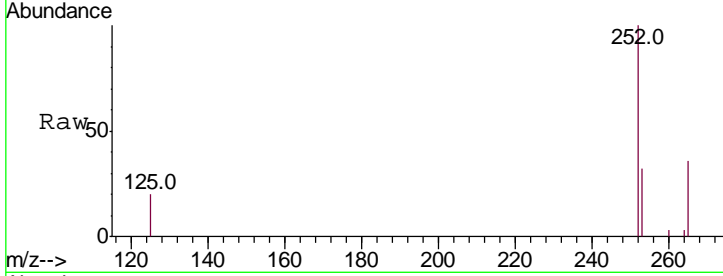
Tgt Ion	Resp	Lower	Upper
264	10207		
264	100		
260	25.3	20.5	30.7
265	33.0	22.8	34.2





#35
 Benzo(b)fluoranthene
 Concen: 0.089 ng
 RT: 22.84 min Scan# 2425
 Delta R.T. 0.00 min
 Lab File: BN002198.D
 Acq: 30 Jul 2018 22:32

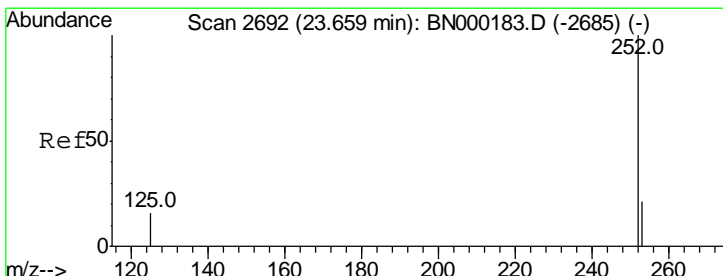
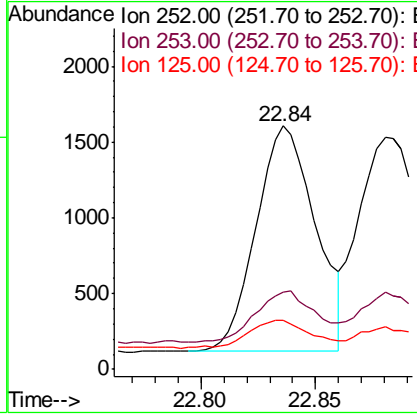
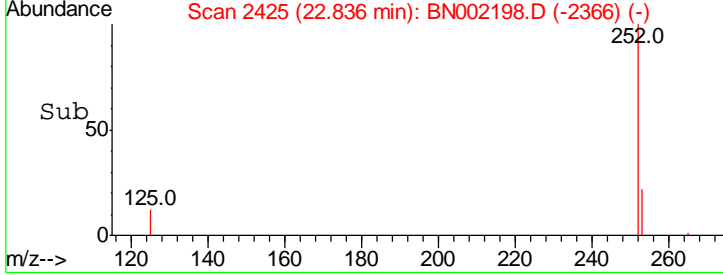
Instrument :
 BNA_N
ClientSampled :
 MDL-WATER-03-QT3-2018



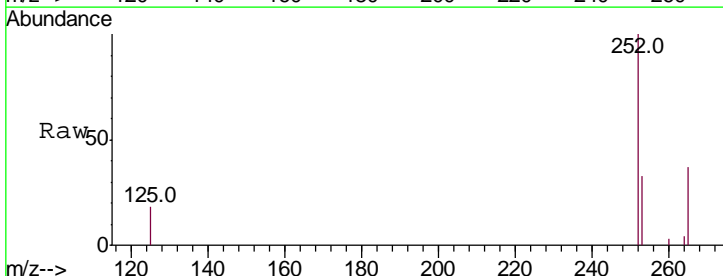
Tgt Ion: 252 Resp: 2674

Ion	Ratio	Lower	Upper
252	100		
253	31.9	20.0	30.0#
125	20.3	16.0	24.0

Manual Integrations
APPROVED
 Sohil
 7/31/2018 3:37:19 PM

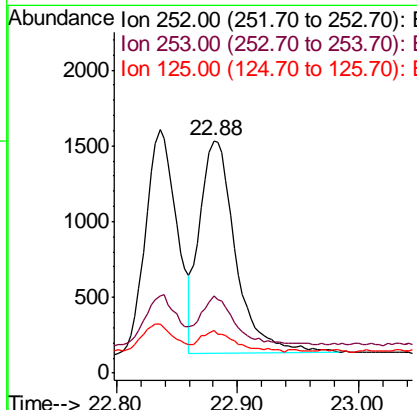
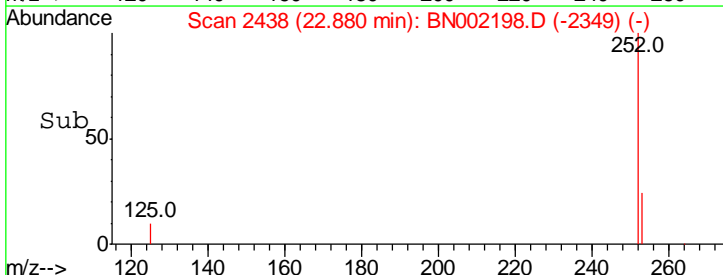


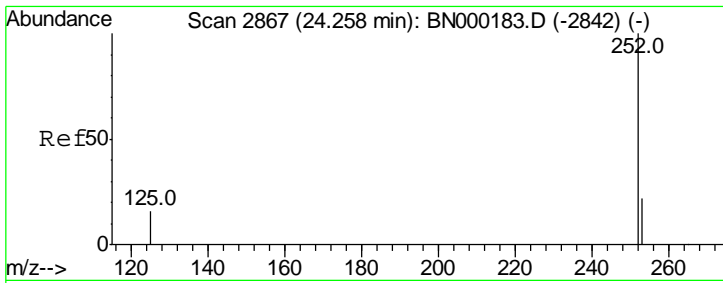
#36
 Benzo(k)fluoranthene
 Concen: 0.093 ng
 RT: 22.88 min Scan# 2438
 Delta R.T. 0.00 min
 Lab File: BN002198.D
 Acq: 30 Jul 2018 22:32



Tgt Ion: 252 Resp: 2897

Ion	Ratio	Lower	Upper
252	100		
253	33.3	16.0	24.0#
125	18.3	8.0	12.0#





#37
 Benzo(a)pyrene
 Concen: 0.091 ng
 RT: 23.41 min Scan# 2592
 Delta R.T. 0.01 min
 Lab File: BN002198.D
 Acq: 30 Jul 2018 22:32

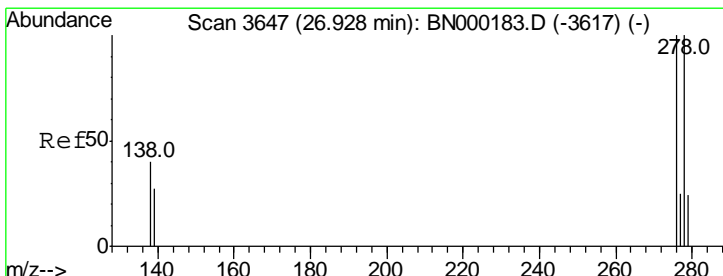
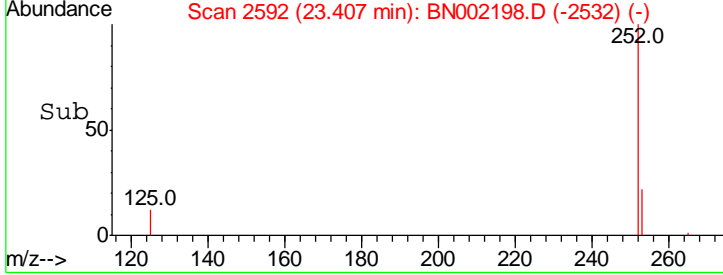
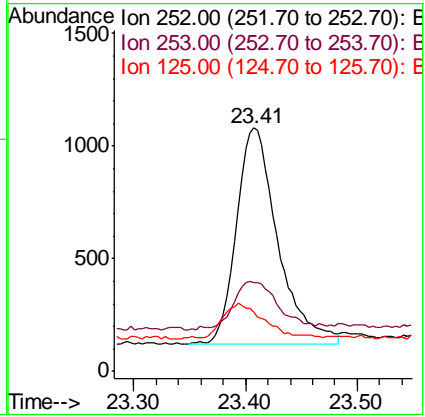
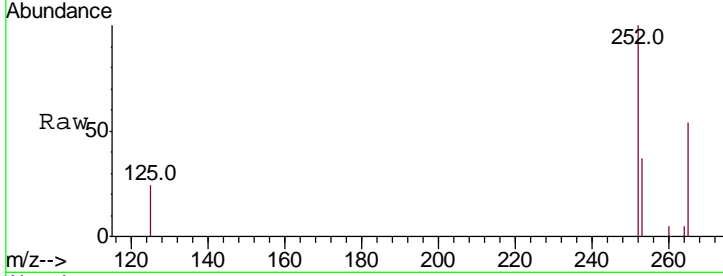
Instrument :
 BNA_N
ClientSampled :
 MDL-WATER-03-QT3-2018

Tgt Ion: 252 Resp: 2465

Ion	Ratio	Lower	Upper
252	100		
253	36.6	16.0	24.0#
125	24.3	12.0	18.0#

Manual Integrations
APPROVED

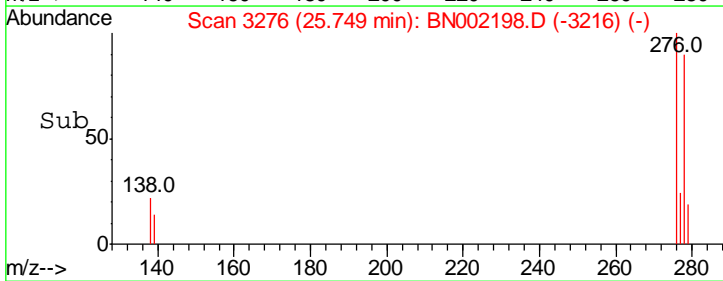
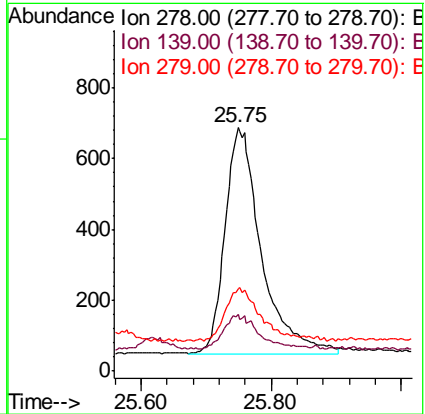
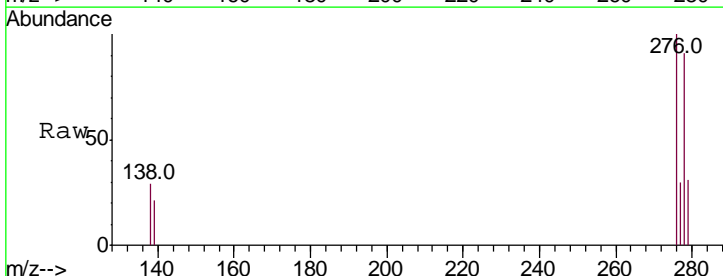
Sohil
 7/31/2018 3:37:19 PM

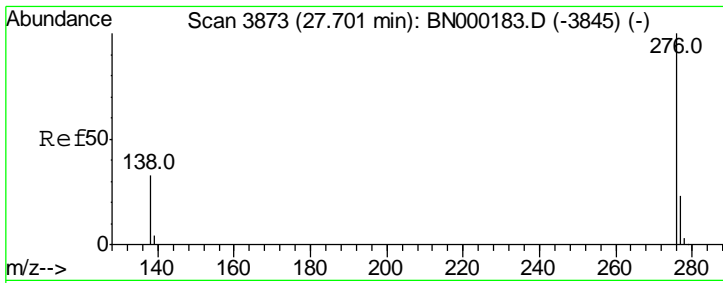


#38
 Dibenzo(a,h)anthracene
 Concen: 0.094 ng
 RT: 25.75 min Scan# 3276
 Delta R.T. 0.01 min
 Lab File: BN002198.D
 Acq: 30 Jul 2018 22:32

Tgt Ion: 278 Resp: 2479

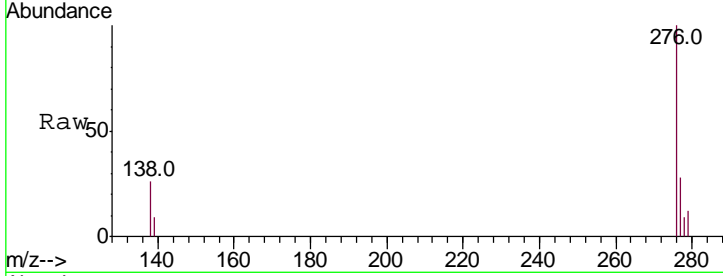
Ion	Ratio	Lower	Upper
278	100		
139	23.1	16.0	24.0
279	33.7	20.0	30.0#





#39
 Benzo(a,h,i)perylene
 Concen: 0.098 ng
 RT: 26.41 min Scan# 3470
 Delta R.T. 0.01 min
 Lab File: BN002198.D
 Acq: 30 Jul 2018 22:32

Instrument :
 BNA_N
ClientSampled :
 MDL-WATER-03-QT3-2018



Tot Ion: 276 Resp: 2662

Ion	Ratio	Lower	Upper
276	100		
277	27.9	16.0	24.0#
138	26.1	20.0	30.0

Manual Integrations
APPROVED
 Sohil
 7/31/2018 3:37:19 PM

