

Data Path : Z:\svoasrv\HPCHEM1\BNA_N\Data\BN080524\
 Data File : BN033258.D
 Acq On : 06 Aug 2024 05:43
 Operator : MA/JU
 Sample : P3455-05
 Misc :
 ALS Vial : 21 Sample Multiplier: 1

Instrument :
 BNA_N
 ClientSampleId :
 RW7-SP100-90-20240801

Quant Time: Aug 06 06:11:48 2024
 Quant Method : Z:\svoasrv\HPCHEM1\BNA_N\Methods\8270-SIM-BN080524.M
 Quant Title : ASP BNA STANDARDS FOR 5 POINT CALIBRATION
 QLast Update : Mon Aug 05 23:57:48 2024
 Response via : Initial Calibration

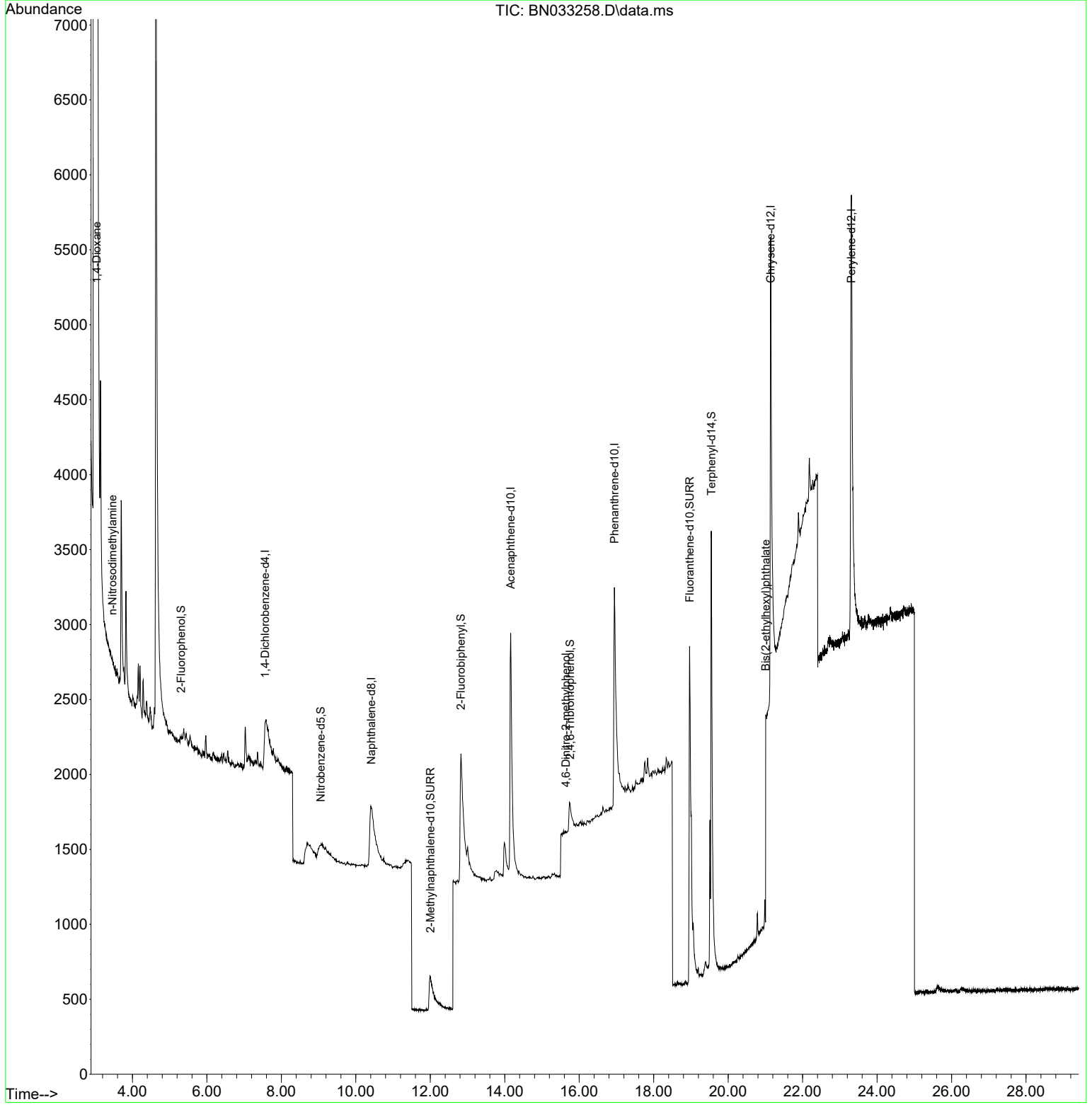
Compound	R.T.	QIon	Response	Conc	Units	Dev(Min)
Internal Standards						
1) 1,4-Dichlorobenzene-d4	7.568	152	526	0.400	ng	0.06
7) Naphthalene-d8	10.415	136	2931	0.400	ng	# 0.10
13) Acenaphthene-d10	14.158	164	2233	0.400	ng	0.03
19) Phenanthrene-d10	16.945	188	5413	0.400	ng	# 0.02
29) Chrysene-d12	21.142	240	6208	0.400	ng	0.02
35) Perylene-d12	23.309	264	7247	0.400	ng	# 0.02
System Monitoring Compounds						
4) 2-Fluorophenol	5.307	112	75	0.058	ng	0.01
5) Phenol-d6	7.033	99	22	0.012	ng	0.04
8) Nitrobenzene-d5	9.059	82	501	0.213	ng	0.14
11) 2-Methylnaphthalene-d10	12.003	152	1169	0.269	ng	0.08
14) 2,4,6-Tribromophenol	15.753	330	317	0.381	ng	0.04
15) 2-Fluorobiphenyl	12.822	172	3178	0.416	ng	0.02
27) Fluoranthene-d10	18.964	212	6089	0.402	ng	0.01
31) Terphenyl-d14	19.549	244	6112	0.570	ng	0.00
Target Compounds						
2) 1,4-Dioxane	3.039	88	10237	17.457	ng	# 93
3) n-Nitrosodimethylamine	3.465	42	16	0.025	ng	# 69
20) 4,6-Dinitro-2-methylph...	15.641	198	7	0.255	ng	73
34) Bis(2-ethylhexyl)phtha...	21.008	149	894	0.208	ng	# 78

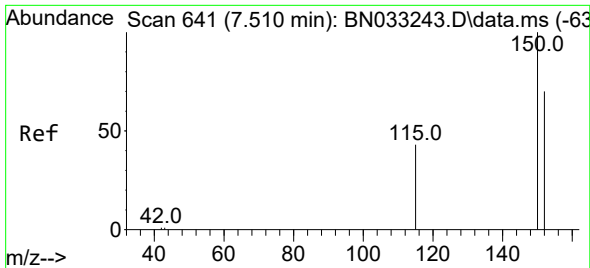
(#) = qualifier out of range (m) = manual integration (+) = signals summed

Data Path : Z:\svoasrv\HPCHEM1\BNA_N\Data\BN080524\
 Data File : BN033258.D
 Acq On : 06 Aug 2024 05:43
 Operator : MA/JU
 Sample : P3455-05
 Misc :
 ALS Vial : 21 Sample Multiplier: 1

Instrument :
 BNA_N
 ClientSampleId :
 RW7-SP100-90-20240801

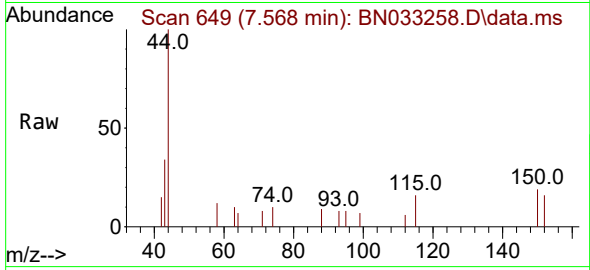
Quant Time: Aug 06 06:11:48 2024
 Quant Method : Z:\svoasrv\HPCHEM1\BNA_N\Methods\8270-SIM-BN080524.M
 Quant Title : ASP BNA STANDARDS FOR 5 POINT CALIBRATION
 QLast Update : Mon Aug 05 23:57:48 2024
 Response via : Initial Calibration



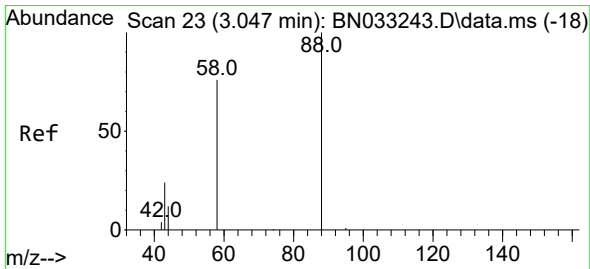
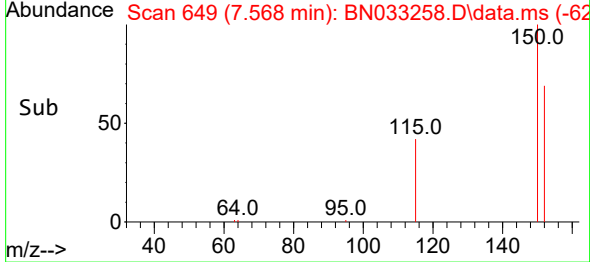
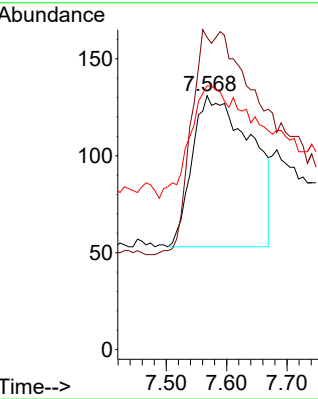


#1
 1,4-Dichlorobenzene-d4
 Concen: 0.400 ng
 RT: 7.568 min Scan# 64
 Delta R.T. 0.058 min
 Lab File: BN033258.D
 Acq: 06 Aug 2024 05:43

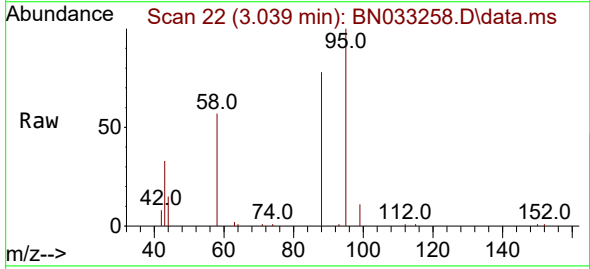
Instrument : BNA_N
 ClientSampleId : RW7-SP100-90-20240801



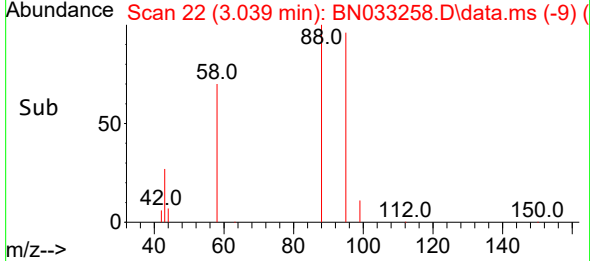
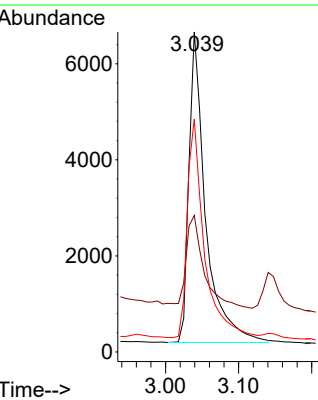
Tgt Ion: 152 Resp: 526
 Ion Ratio Lower Upper
 152 100
 150 122.9 108.2 162.2
 115 103.8 70.5 105.7

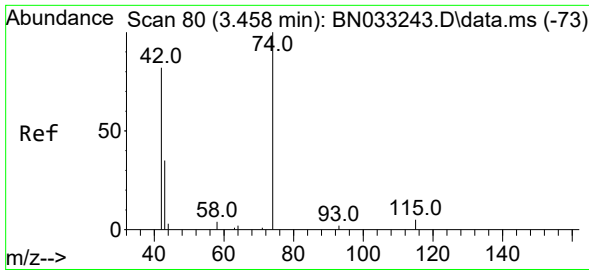


#2
 1,4-Dioxane
 Concen: 17.457 ng
 RT: 3.039 min Scan# 22
 Delta R.T. -0.008 min
 Lab File: BN033258.D
 Acq: 06 Aug 2024 05:43



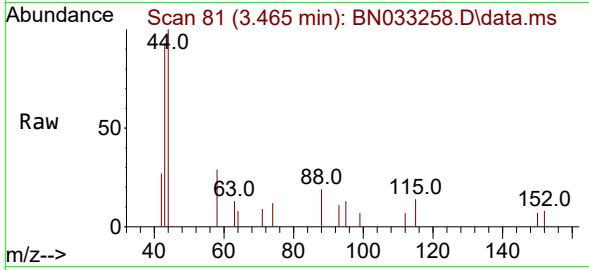
Tgt Ion: 88 Resp: 10237
 Ion Ratio Lower Upper
 88 100
 43 31.9 18.6 28.0#
 58 71.2 54.5 81.7



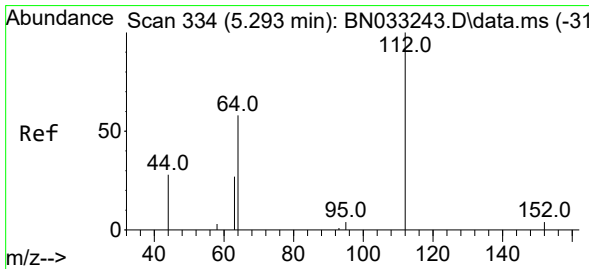
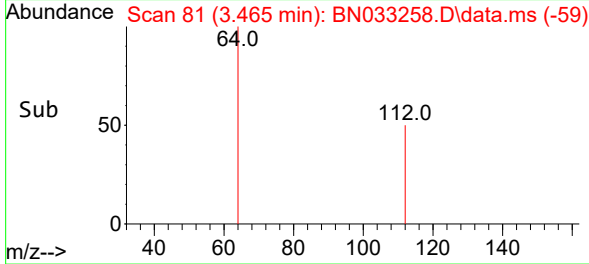
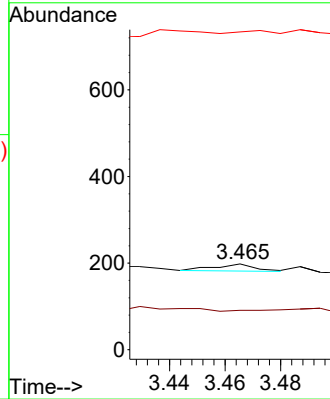


#3
 n-Nitrosodimethylamine
 Concen: 0.025 ng
 RT: 3.465 min Scan# 81
 Delta R.T. 0.007 min
 Lab File: BN033258.D
 Acq: 06 Aug 2024 05:43

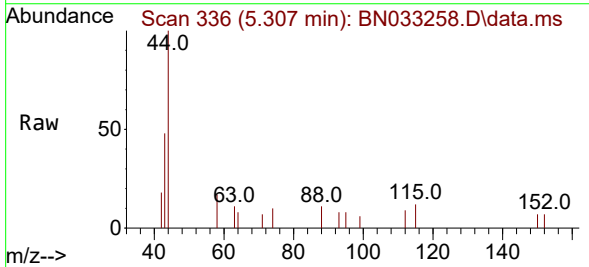
Instrument :
 BNA_N
 ClientSampleId :
 RW7-SP100-90-20240801



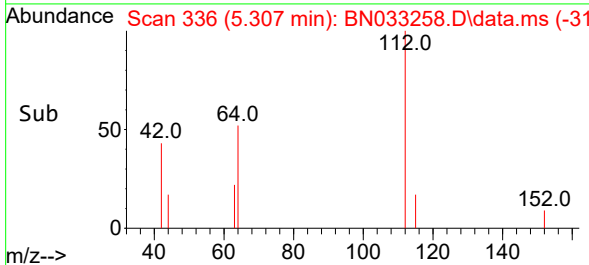
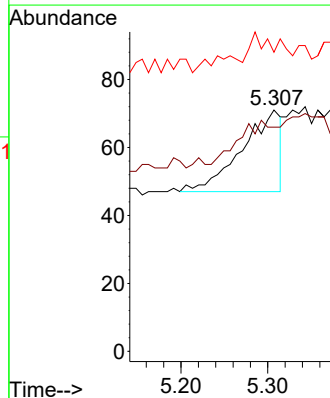
Tgt Ion: 42 Resp: 16
 Ion Ratio Lower Upper
 42 100
 74 0.0 0.0 0.0
 44 0.0 9.6 14.4#

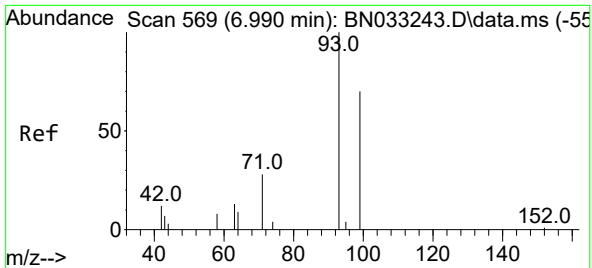


#4
 2-Fluorophenol
 Concen: 0.058 ng
 RT: 5.307 min Scan# 336
 Delta R.T. 0.014 min
 Lab File: BN033258.D
 Acq: 06 Aug 2024 05:43



Tgt Ion: 112 Resp: 75
 Ion Ratio Lower Upper
 112 100
 64 0.0 18.0 27.0#
 63 0.0 0.0 0.0

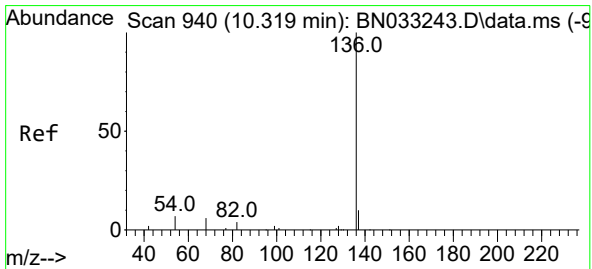
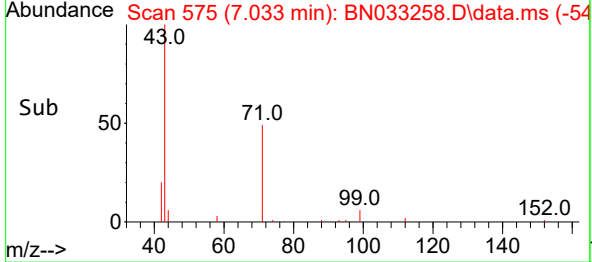
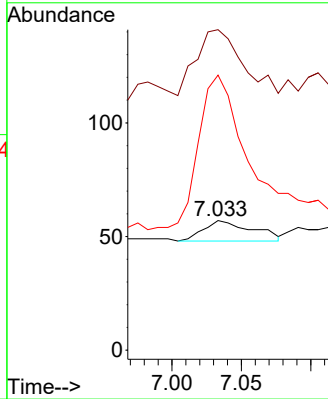
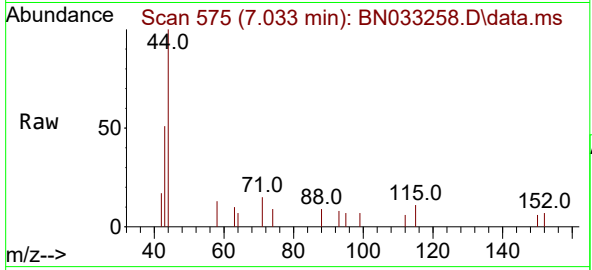




#5
 Phenol-d6
 Concen: 0.012 ng
 RT: 7.033 min Scan# 51
 Delta R.T. 0.043 min
 Lab File: BN033258.D
 Acq: 06 Aug 2024 05:43

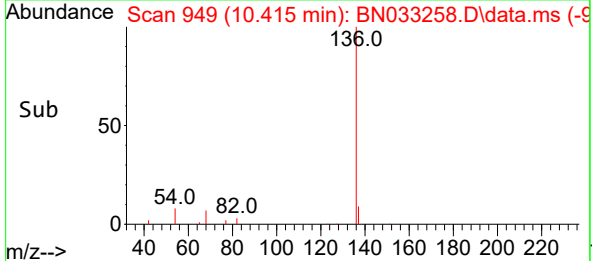
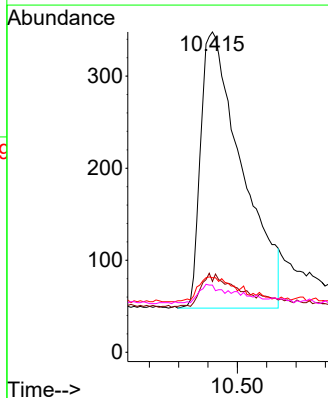
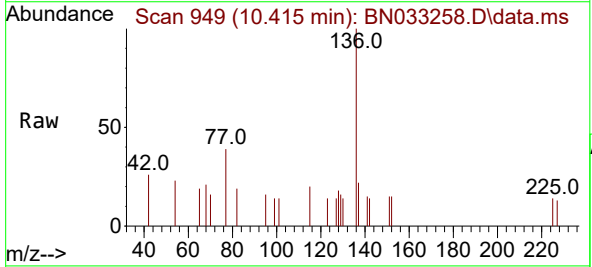
Instrument :
 BNA_N
 ClientSampleId :
 RW7-SP100-90-20240801

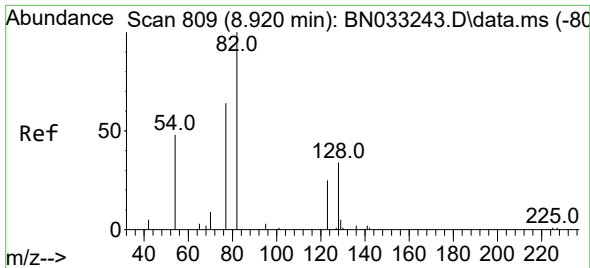
Tgt Ion	Resp	Lower	Upper
99	100		
42	313.6	0.0	0.0#
71	913.6	0.0	0.0#



#7
 Naphthalene-d8
 Concen: 0.400 ng
 RT: 10.415 min Scan# 949
 Delta R.T. 0.096 min
 Lab File: BN033258.D
 Acq: 06 Aug 2024 05:43

Tgt Ion	Resp	Lower	Upper
136	100		
137	22.1	14.1	21.1#
54	23.3	13.8	20.8#
68	21.0	12.4	18.6#



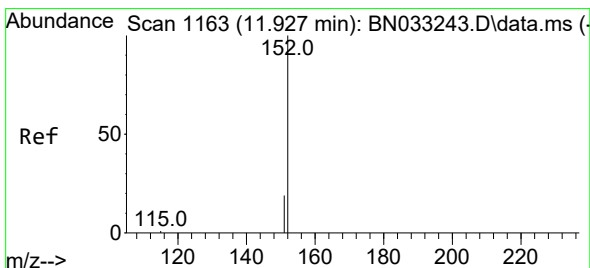
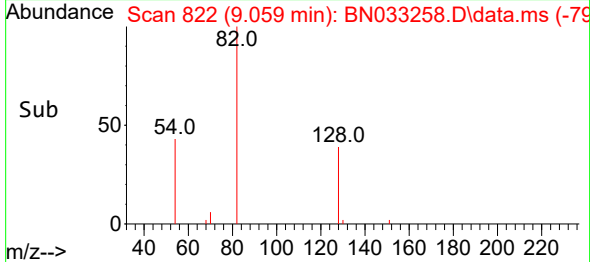
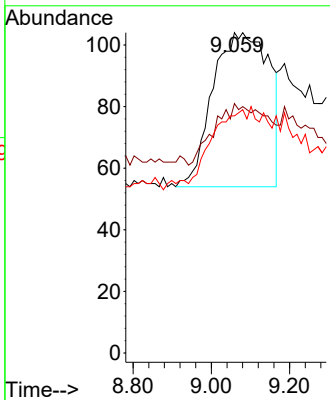
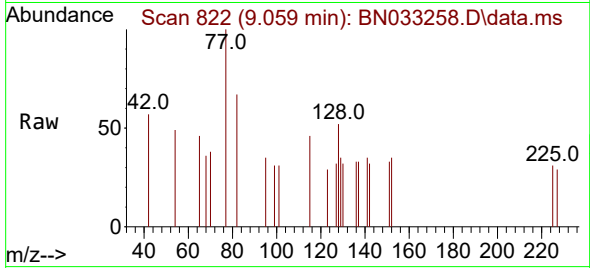


#8
 Nitrobenzene-d5
 Concen: 0.213 ng
 RT: 9.059 min Scan# 81
 Delta R.T. 0.139 min
 Lab File: BN033258.D
 Acq: 06 Aug 2024 05:43

Instrument :
 BNA_N
 ClientSampleId :
 RW7-SP100-90-20240801

Tgt Ion: 82 Resp: 501

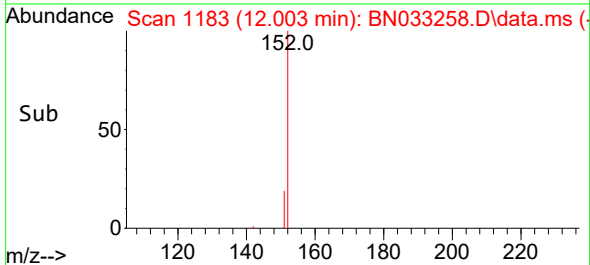
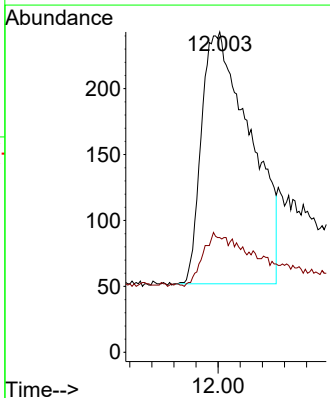
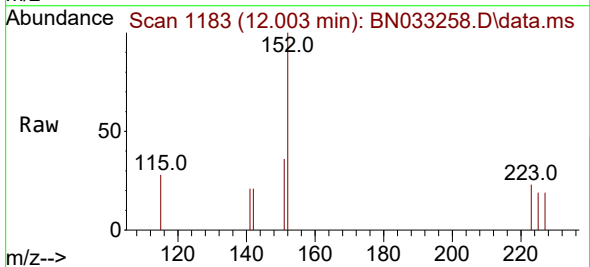
Ion	Ratio	Lower	Upper
82	100		
128	77.9	54.8	82.2
54	74.0	55.9	83.9

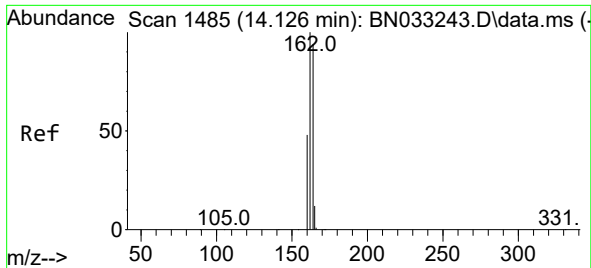


#11
 2-Methylnaphthalene-d10
 Concen: 0.269 ng
 RT: 12.003 min Scan# 1183
 Delta R.T. 0.076 min
 Lab File: BN033258.D
 Acq: 06 Aug 2024 05:43

Tgt Ion: 152 Resp: 1169

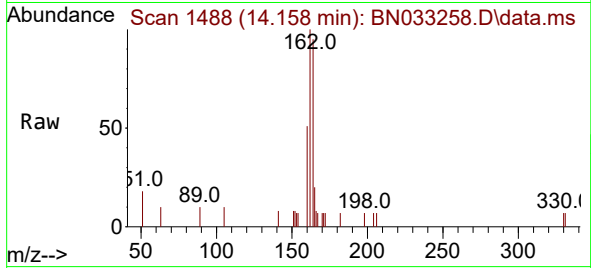
Ion	Ratio	Lower	Upper
152	100		
151	10.1	11.9	17.9



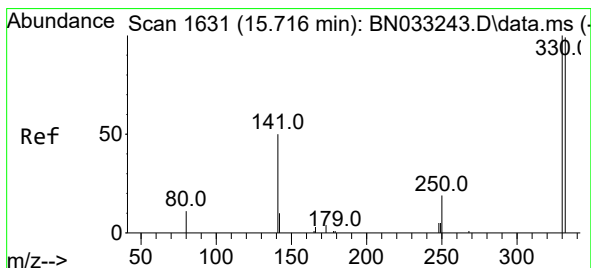
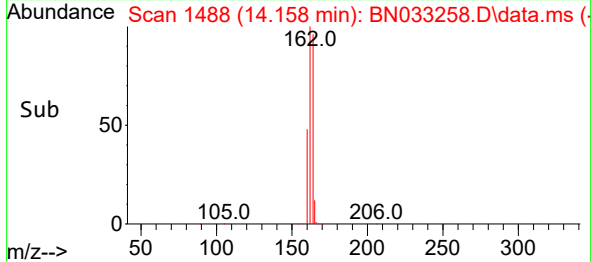
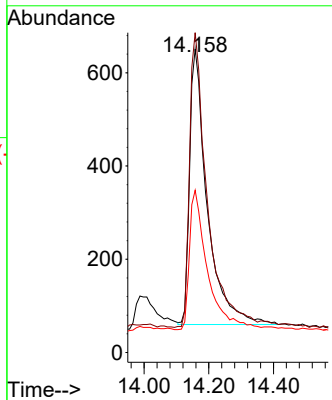


#13
 Acenaphthene-d10
 Concen: 0.400 ng
 RT: 14.158 min Scan# 14
 Delta R.T. 0.032 min
 Lab File: BN033258.D
 Acq: 06 Aug 2024 05:43

Instrument :
 BNA_N
 ClientSampleId :
 RW7-SP100-90-20240801

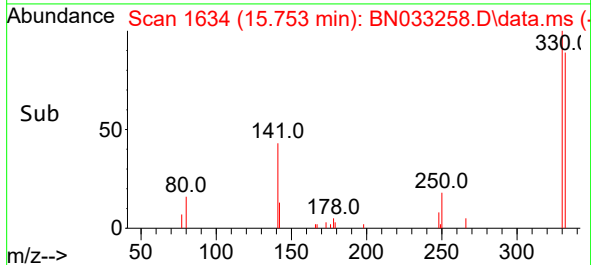
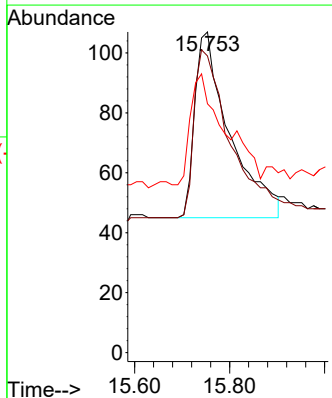
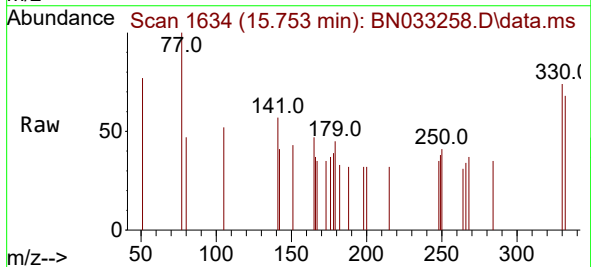


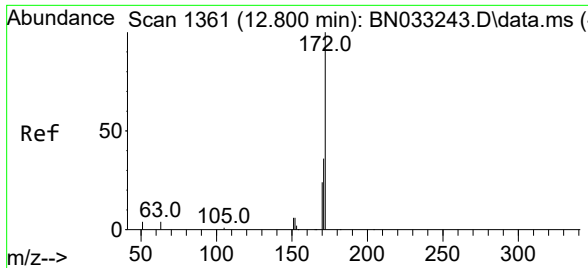
Tgt Ion:164 Resp: 2233
 Ion Ratio Lower Upper
 164 100
 162 105.4 84.6 127.0
 160 53.5 42.4 63.6



#14
 2,4,6-Tribromophenol
 Concen: 0.381 ng
 RT: 15.753 min Scan# 1634
 Delta R.T. 0.037 min
 Lab File: BN033258.D
 Acq: 06 Aug 2024 05:43

Tgt Ion:330 Resp: 317
 Ion Ratio Lower Upper
 330 100
 332 94.3 73.7 110.5
 141 59.6 44.8 67.2

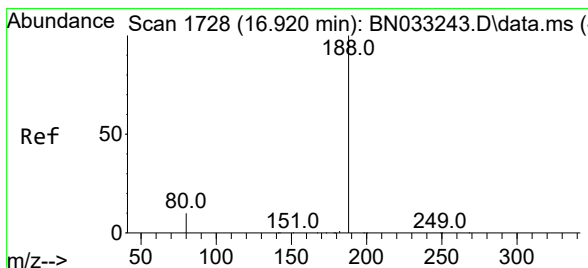
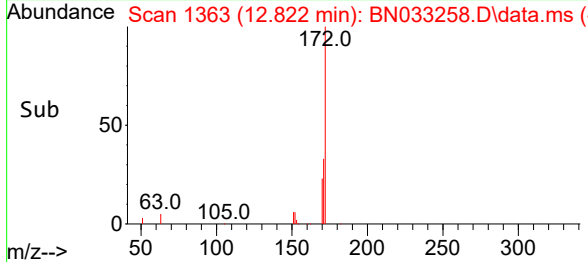
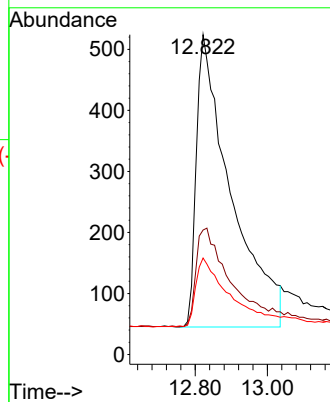
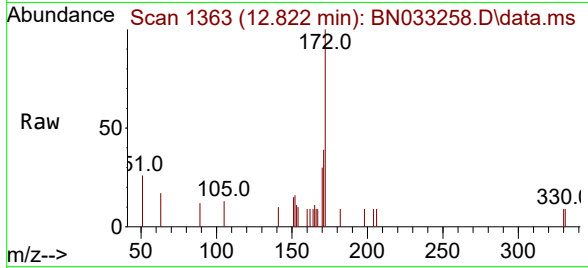




#15
 2-Fluorobiphenyl
 Concen: 0.416 ng
 RT: 12.822 min Scan# 11
 Delta R.T. 0.021 min
 Lab File: BN033258.D
 Acq: 06 Aug 2024 05:43

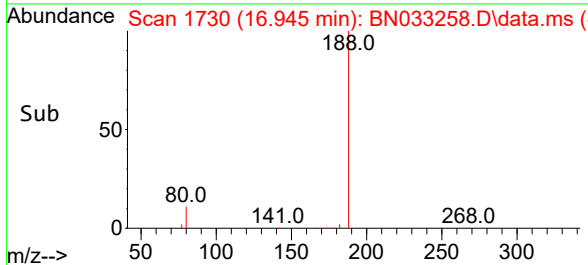
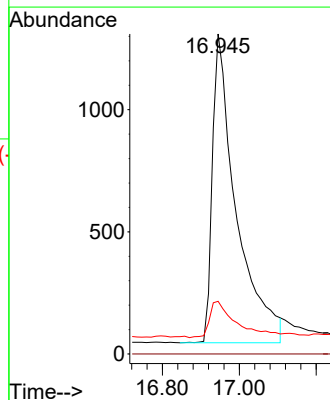
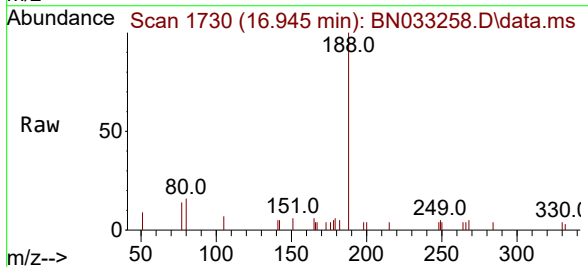
Instrument :
 BNA_N
 ClientSampleId :
 RW7-SP100-90-20240801

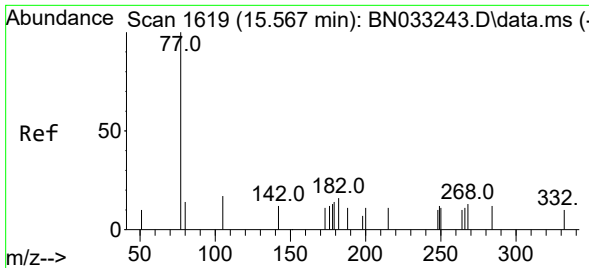
Tgt Ion	Resp	Lower	Upper
172	100		
171	38.9	32.3	48.5
170	30.2	23.4	35.2



#19
 Phenanthrene-d10
 Concen: 0.400 ng
 RT: 16.945 min Scan# 1730
 Delta R.T. 0.025 min
 Lab File: BN033258.D
 Acq: 06 Aug 2024 05:43

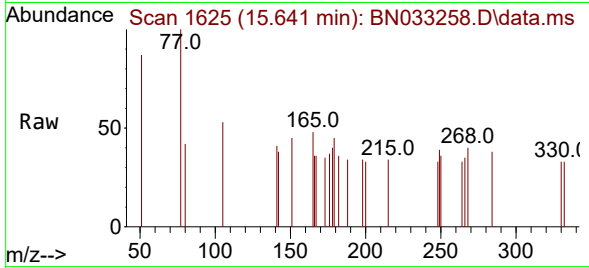
Tgt Ion	Resp	Lower	Upper
188	100		
94	0.0	0.0	0.0
80	16.5	10.2	15.4



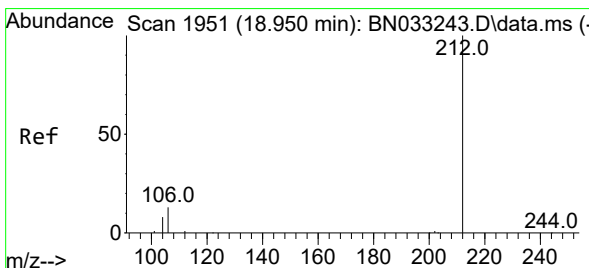
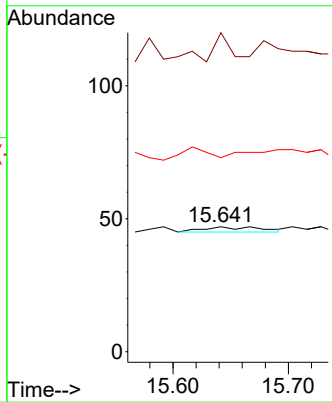
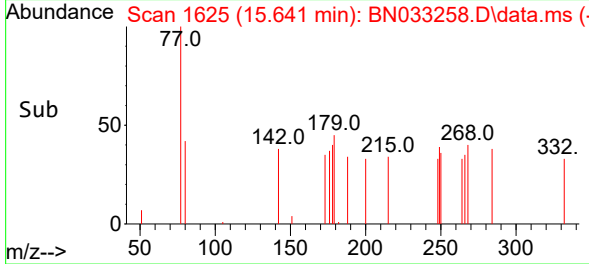


#20
 4,6-Dinitro-2-methylphenol
 Concen: 0.255 ng
 RT: 15.641 min Scan# 1625
 Delta R.T. 0.074 min
 Lab File: BN033258.D
 Acq: 06 Aug 2024 05:43

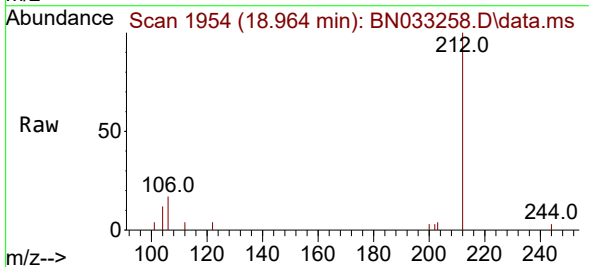
Instrument :
 BNA_N
 ClientSampleId :
 RW7-SP100-90-20240801



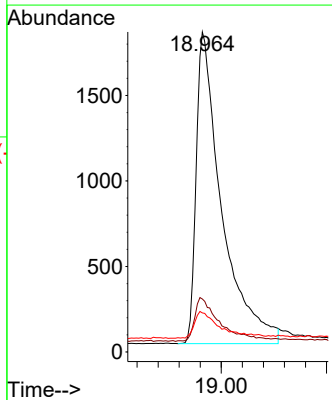
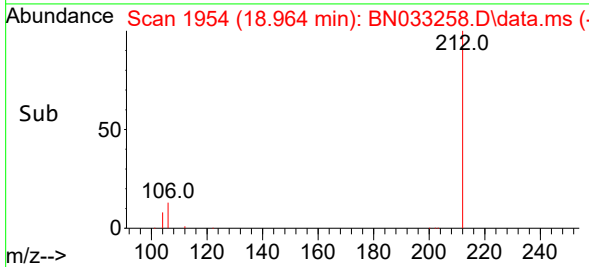
Tgt Ion:198 Resp: 7
 Ion Ratio Lower Upper
 198 100
 51 255.3 250.6 375.8
 105 155.3 152.6 229.0

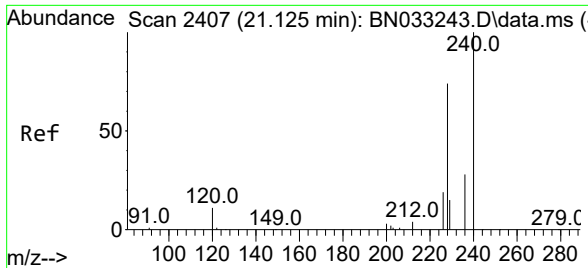


#27
 Fluoranthene-d10
 Concen: 0.402 ng
 RT: 18.964 min Scan# 1954
 Delta R.T. 0.014 min
 Lab File: BN033258.D
 Acq: 06 Aug 2024 05:43



Tgt Ion:212 Resp: 6089
 Ion Ratio Lower Upper
 212 100
 106 14.0 11.4 17.0
 104 8.7 7.1 10.7



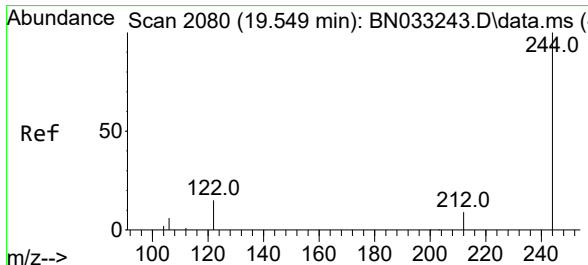
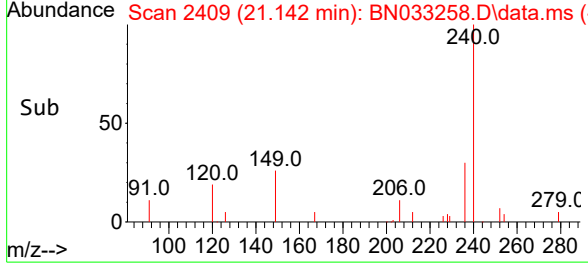
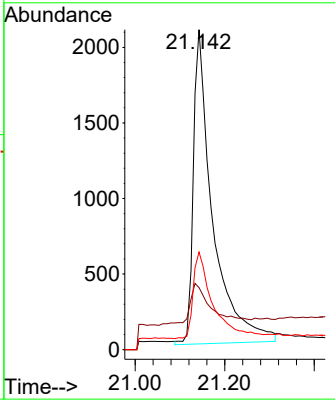
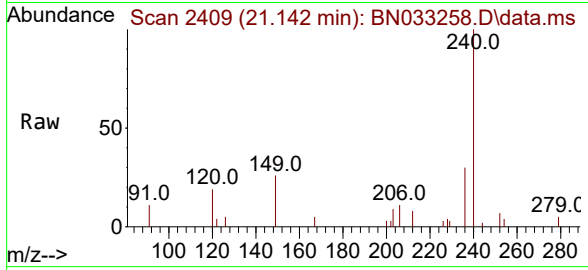


#29
 Chrysene-d12
 Concen: 0.400 ng
 RT: 21.142 min Scan# 2409
 Delta R.T. 0.017 min
 Lab File: BN033258.D
 Acq: 06 Aug 2024 05:43

Instrument : BNA_N
 ClientSampleId : RW7-SP100-90-20240801

Tgt Ion:240 Resp: 6208

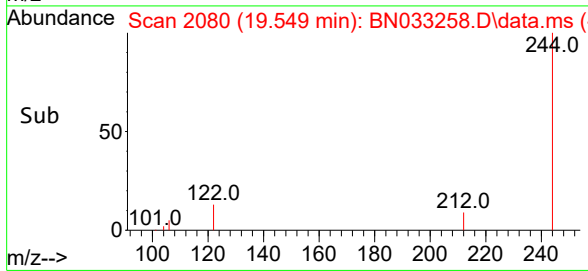
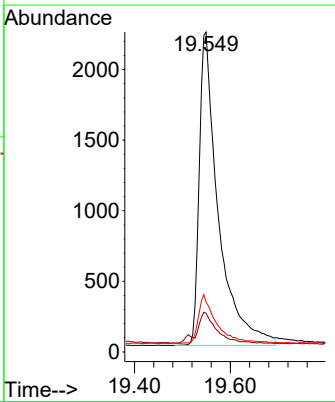
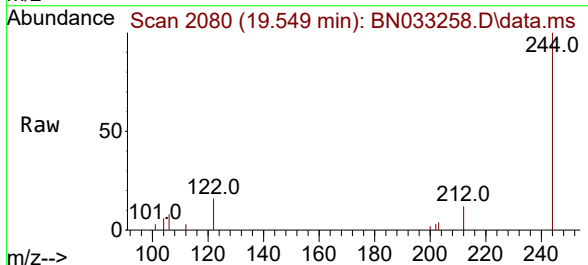
Ion	Ratio	Lower	Upper
240	100		
120	19.4	13.3	19.9
236	30.5	23.8	35.6

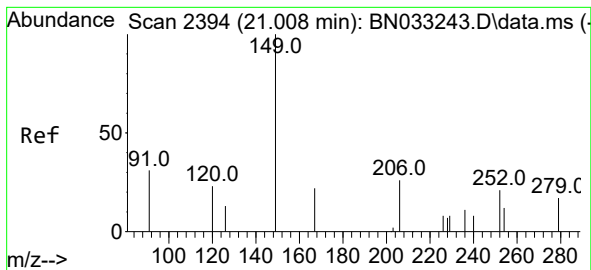


#31
 Terphenyl-d14
 Concen: 0.570 ng
 RT: 19.549 min Scan# 2080
 Delta R.T. -0.000 min
 Lab File: BN033258.D
 Acq: 06 Aug 2024 05:43

Tgt Ion:244 Resp: 6112

Ion	Ratio	Lower	Upper
244	100		
212	12.1	9.9	14.9
122	15.5	14.1	21.1

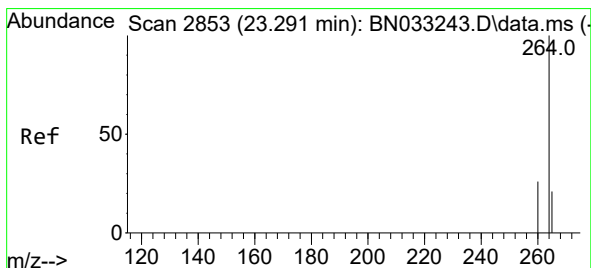
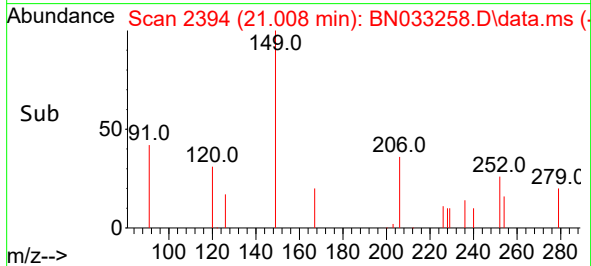
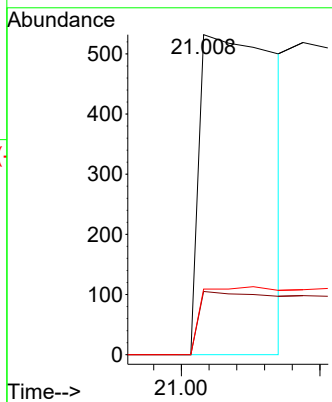
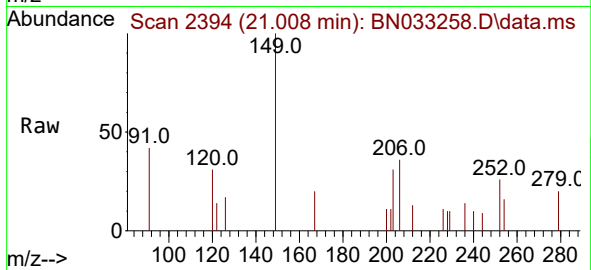




#34
 Bis(2-ethylhexyl)phthalate
 Concen: 0.208 ng
 RT: 21.008 min Scan# 21
 Delta R.T. -0.000 min
 Lab File: BN033258.D
 Acq: 06 Aug 2024 05:43

Instrument :
 BNA_N
 ClientSampleId :
 RW7-SP100-90-20240801

Tgt Ion	Resp	Lower	Upper
149	100		
167	31.0	19.8	29.6#
279	27.5	8.2	12.4#



#35
 Perylene-d12
 Concen: 0.400 ng
 RT: 23.309 min Scan# 2859
 Delta R.T. 0.017 min
 Lab File: BN033258.D
 Acq: 06 Aug 2024 05:43

Tgt Ion	Resp	Lower	Upper
264	100		
260	28.0	21.4	32.2
265	102.4	66.6	99.8#

