

Data Path : Z:\SVOASRV\HPCHEM1\BNA\_N\DATA\BN080918\  
 Data File : BN002272.D  
 Acq On : 09 Aug 2018 20:32  
 Operator : JU/SJ  
 Sample : J4301-18  
 Misc :  
 ALS Vial : 15 Sample Multiplier: 1

Instrument :  
 BNA\_N  
 ClientSampleId :  
 C0AF9

Integration Parameters: LSCINT.P

Integrator: RTE  
 Smoothing : OFF Filtering: 5  
 Sampling : 1 Min Area: 1 % of largest Peak  
 Start Thrs: 0.2 Max Peaks: 100  
 Stop Thrs : 0 Peak Location: TOP

If leading or trailing edge < 100 prefer < Baseline drop else tangent >  
 Peak separation: 5

Method : Z:\SVOASRV\HPCHEM1\BNA\_N\METHODS\SOM-EPA-BN071318MA.M  
 Title : SVOA CALIBRATION

Signal : TIC

peak #	R.T. min	first scan	max scan	last scan	PK TY	peak height	corr. area	corr. % max.	% of total
1	3.252	42	45	51	rVB	43456	53646	1.66%	0.116%
2	3.870	147	150	155	rVB	28293	41323	1.27%	0.089%
3	6.864	653	659	673	rBV	723033	1220213	37.65%	2.641%
4	7.028	681	687	700	rBV	643978	1003219	30.95%	2.171%
5	7.222	713	720	730	rBV	775569	1238843	38.22%	2.681%
6	7.687	792	799	808	rVB	948764	1518439	46.85%	3.286%
7	8.387	912	918	935	rBV	777310	1297950	40.04%	2.809%
8	8.834	987	994	1004	rBV	774315	1315365	40.58%	2.847%
9	9.546	1108	1115	1126	rBV	610120	1059470	32.69%	2.293%
10	10.087	1200	1207	1221	rBV	856364	1522904	46.98%	3.296%
11	10.458	1262	1270	1279	rBV	1359777	2241330	69.15%	4.851%
12	10.599	1287	1294	1308	rBV	676299	1227370	37.87%	2.656%
13	13.304	1746	1754	1759	rBV	74409	113881	3.51%	0.246%
14	13.640	1805	1811	1815	rBV2	57911	81700	2.52%	0.177%
15	13.728	1820	1826	1830	rVV	1580414	2175473	67.12%	4.708%
16	13.775	1830	1834	1844	rVB	492340	685822	21.16%	1.484%
17	14.010	1866	1874	1884	rBV	1794741	2768586	85.42%	5.992%
18	14.316	1919	1926	1935	rVB2	1754059	2666691	82.27%	5.771%
19	14.534	1957	1963	1965	rBV	248855	373067	11.51%	0.807%
20	14.569	1965	1969	1979	rVB	791831	1335575	41.20%	2.890%
21	15.316	2088	2096	2102	rBV	2202073	3241304	100.00%	7.015%
22	15.440	2111	2117	2129	rBV	500869	748302	23.09%	1.619%
23	15.551	2133	2136	2139	rBV2	28852	45795	1.41%	0.099%
24	15.804	2174	2179	2183	rBV5	34595	50824	1.57%	0.110%
25	16.045	2216	2220	2221	rBV	44446	48022	1.48%	0.104%
26	16.069	2221	2224	2235	rVB	76517	139474	4.30%	0.302%
27	16.840	2352	2355	2359	rBV2	38144	50869	1.57%	0.110%
28	16.892	2360	2364	2375	rVB	67030	114867	3.54%	0.249%
29	17.063	2387	2393	2403	rBV	1832574	2597605	80.14%	5.622%
30	17.163	2404	2410	2419	rVB2	2006419	2906199	89.66%	6.289%
31	17.575	2476	2480	2483	rVB2	36578	40193	1.24%	0.087%
32	17.969	2543	2547	2555	rBV	80281	137131	4.23%	0.297%
33	19.128	2742	2744	2753	rVB3	30266	40994	1.26%	0.089%
34	19.275	2766	2769	2775	rVB5	34532	47186	1.46%	0.102%

Data Path : Z:\SVOASRV\HPCHEM1\BNA\_N\DATA\BN080918\  
 Data File : BN002272.D  
 Acq On : 09 Aug 2018 20:32  
 Operator : JU/SJ  
 Sample : J4301-18  
 Misc :  
 ALS Vial : 15 Sample Multiplier: 1

Instrument :  
 BNA\_N  
 ClientSampleId :  
 C0AF9

Integration Parameters: LSCINT.P  
 Integrator: RTE  
 Smoothing : OFF Filtering: 5  
 Sampling : 1 Min Area: 1 % of largest Peak  
 Start Thrs: 0.2 Max Peaks: 100  
 Stop Thrs : 0 Peak Location: TOP

If leading or trailing edge < 100 prefer < Baseline drop else tangent >  
 Peak separation: 5

Method : Z:\SVOASRV\HPCHEM1\BNA\_N\METHODS\SOM-EPA-BN071318MA.M  
 Title : SVOA CALIBRATION

35	19.345	2778	2781	2789	rVB3	26699	43509	1.34%	0.094%
36	19.463	2795	2801	2808	rBV	2065710	2941982	90.77%	6.367%
37	19.534	2808	2813	2823	rVB2	41744	107895	3.33%	0.234%
38	19.722	2842	2845	2854	rVB6	40623	55948	1.73%	0.121%
39	20.033	2893	2898	2903	rBV4	39065	64412	1.99%	0.139%
40	20.581	2989	2991	2996	rVB6	30133	35387	1.09%	0.077%
41	21.186	3090	3094	3099	rVB	85305	102834	3.17%	0.223%
42	21.263	3101	3107	3117	rBV	1883793	2390085	73.74%	5.172%
43	21.422	3132	3134	3138	rVB	38262	42193	1.30%	0.091%
44	21.857	3205	3208	3212	rBV	55762	63728	1.97%	0.138%
45	22.316	3283	3286	3293	rVB	92477	120319	3.71%	0.260%
46	22.445	3305	3308	3312	rVB	59869	75448	2.33%	0.163%
47	22.822	3368	3372	3377	rVB	134939	189180	5.84%	0.409%
48	23.345	3454	3461	3475	rVB2	1511132	3040707	93.81%	6.581%
49	23.486	3478	3485	3493	rVB	1219420	2333916	72.01%	5.051%
50	24.016	3570	3575	3581	rVB	140454	247626	7.64%	0.536%
51	24.751	3696	3700	3708	rVB2	97777	202778	6.26%	0.439%

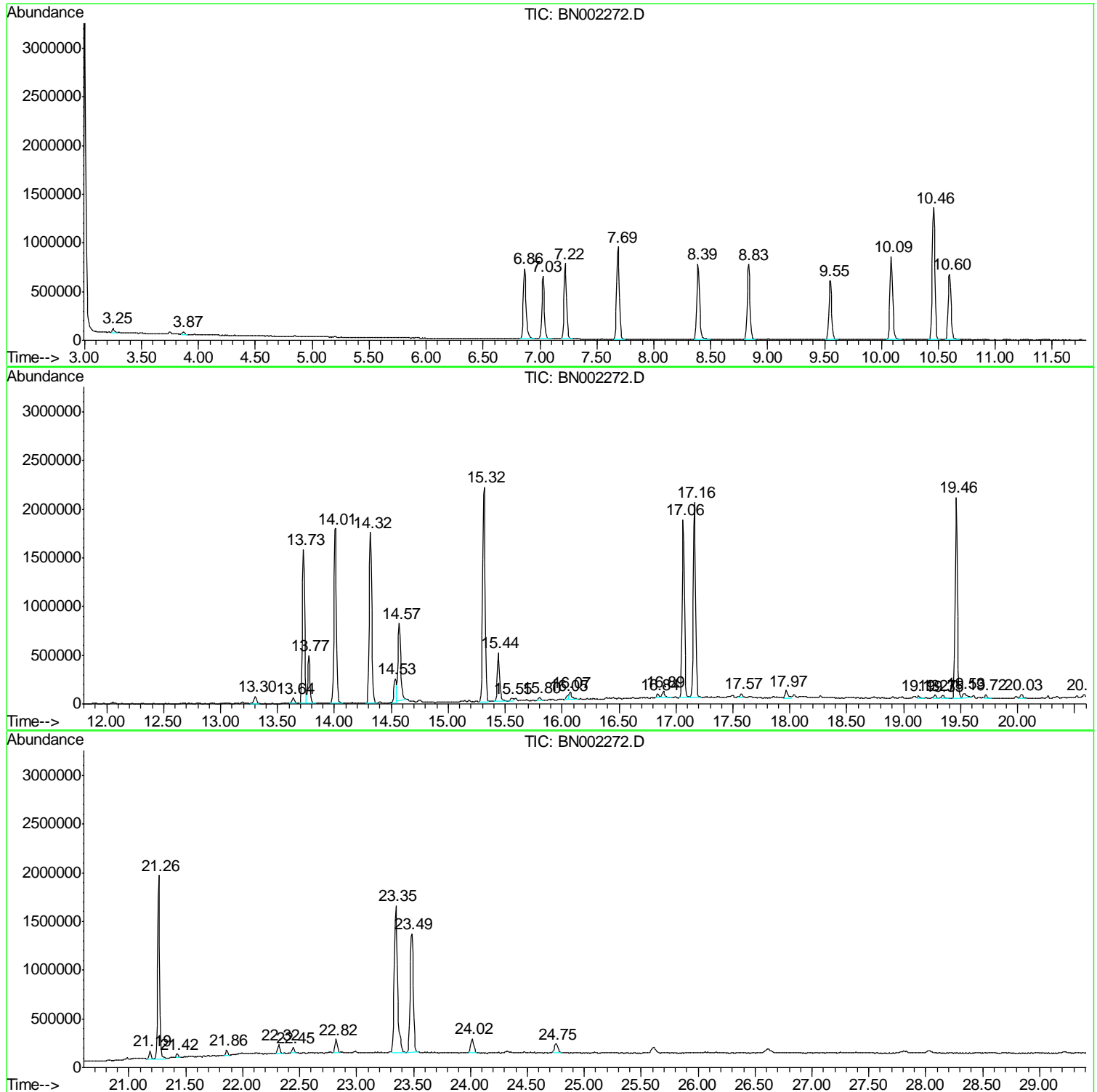
Sum of corrected areas: 46207579

Data Path : Z:\SVOASRV\HPCHEM1\BNA N\DATA\BN080918\  
Data File : BN002272.D  
Acq On : 09 Aug 2018 20:32  
Operator : JU/SJ  
Sample : J4301-18  
Misc :  
ALS Vial : 15 Sample Multiplier: 1

Instrument :  
BNA\_N  
ClientSampled :  
C0AF9

Quant Method : Z:\SVOASRV\HPCHEM1\BNA\_N\METHODS\SOM-EPA-BN071318MA.M  
Quant Title : SVOA CALIBRATION

TIC Library : C:\Database\NIST11.L  
TIC Integration Parameters: LSCINT.P



Data Path : Z:\SVOASRV\HPCHEM1\BNA N\DATA\BN080918\  
 Data File : BN002272.D  
 Acq On : 09 Aug 2018 20:32  
 Operator : JU/SJ  
 Sample : J4301-18  
 Misc :  
 ALS Vial : 15 Sample Multiplier: 1

Instrument :  
 BNA\_N  
 ClientSampled :  
 C0AF9

Quant Method : Z:\SVOASRV\HPCHEM1\BNA\_N\METHODS\SOM-EPA-BN071318MA.M  
 Quant Title : SVOA CALIBRATION

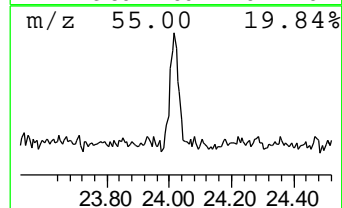
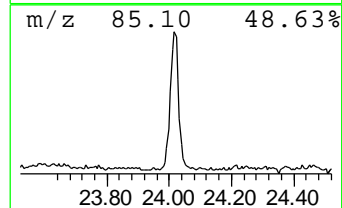
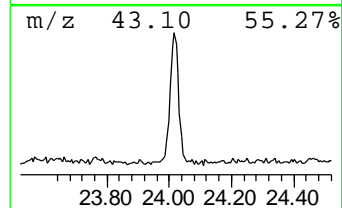
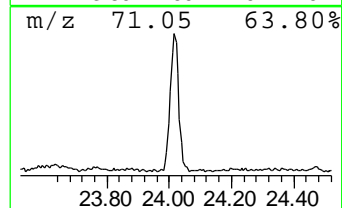
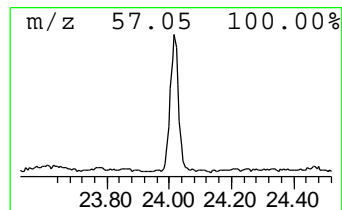
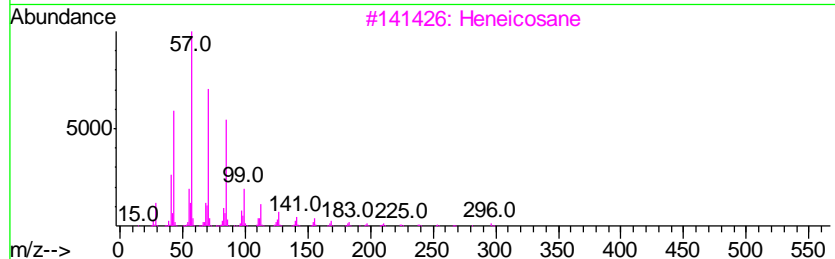
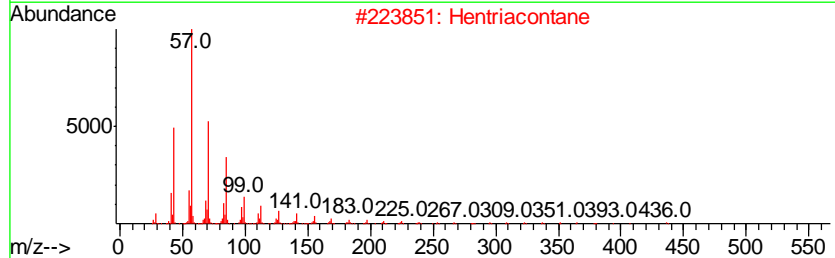
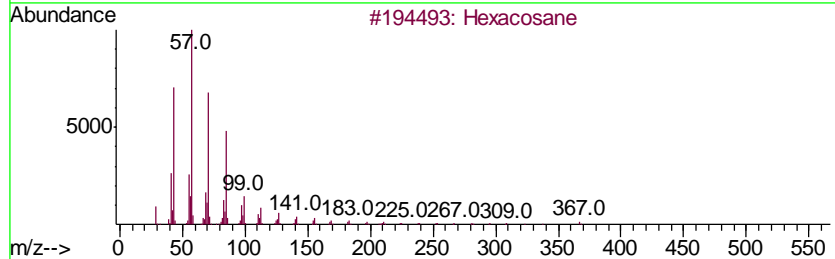
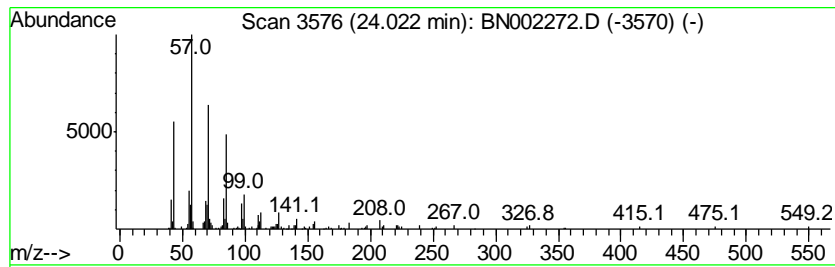
TIC Library : C:\Database\NIST11.L  
 TIC Integration Parameters: LSCINT.P

\*\*\*\*\*  
 Peak Number 1 (DEL) Alkane: Straight-Chai... Concentration Rank 1

R.T.	EstConc	Area	Relative to ISTD	R.T.
24.02	2.12 ng/ul	247626	Perylene-d12	23.49

Hit#	of	Tentative ID	MW	MolForm	CAS#	Qual
1	5	Hexacosane	366	C26H54	000630-01-3	90
2		Hentriacontane	437	C31H64	000630-04-6	90
3		Heneicosane	296	C21H44	000629-94-7	90
4		Heneicosane	296	C21H44	000629-94-7	87
5		Octacosane	394	C28H58	000630-02-4	87



Data Path : Z:\SVOASRV\HPCHEM1\BNA\_N\DATA\BN080918\  
Data File : BN002272.D  
Acq On : 09 Aug 2018 20:32  
Operator : JU/SJ  
Sample : J4301-18  
Misc :  
ALS Vial : 15 Sample Multiplier: 1

Instrument :  
BNA\_N  
ClientSampleId :  
C0AF9

Quant Method : Z:\SVOASRV\HPCHEM1\BNA\_N\METHODS\SOM-EPA-BN071318MA.M  
Quant Title : SVOA CALIBRATION

TIC Library : C:\Database\NIST11.L  
TIC Integration Parameters: LSCINT.P

TIC Top Hit name	RT	EstConc	Units	Response	--Internal Standard--			
					#	RT	Resp	Conc
(DEL) Alkane: Str...	24.02	2.1	ng/ul	247626	6	23.49	2333920	20.0