

Data Path : Z:\svoasrv\HPCHEM1\BNA\_N\Data\BN080923\  
 Data File : BN026848.D  
 Acq On : 08 Aug 2023 14:20  
 Operator : MA/JU  
 Sample : PB154594BL  
 Misc :  
 ALS Vial : 12 Sample Multiplier: 1

Instrument :  
 BNA\_N  
 ClientSampleId :  
 PB154594BL

Quant Time: Aug 09 01:10:00 2023  
 Quant Method : Z:\svoasrv\HPCHEM1\BNA\_N\Methods\8270-SIM-BN080123.M  
 Quant Title : ASP BNA STANDARDS FOR 5 POINT CALIBRATION  
 QLast Update : Wed Aug 09 01:06:23 2023  
 Response via : Initial Calibration

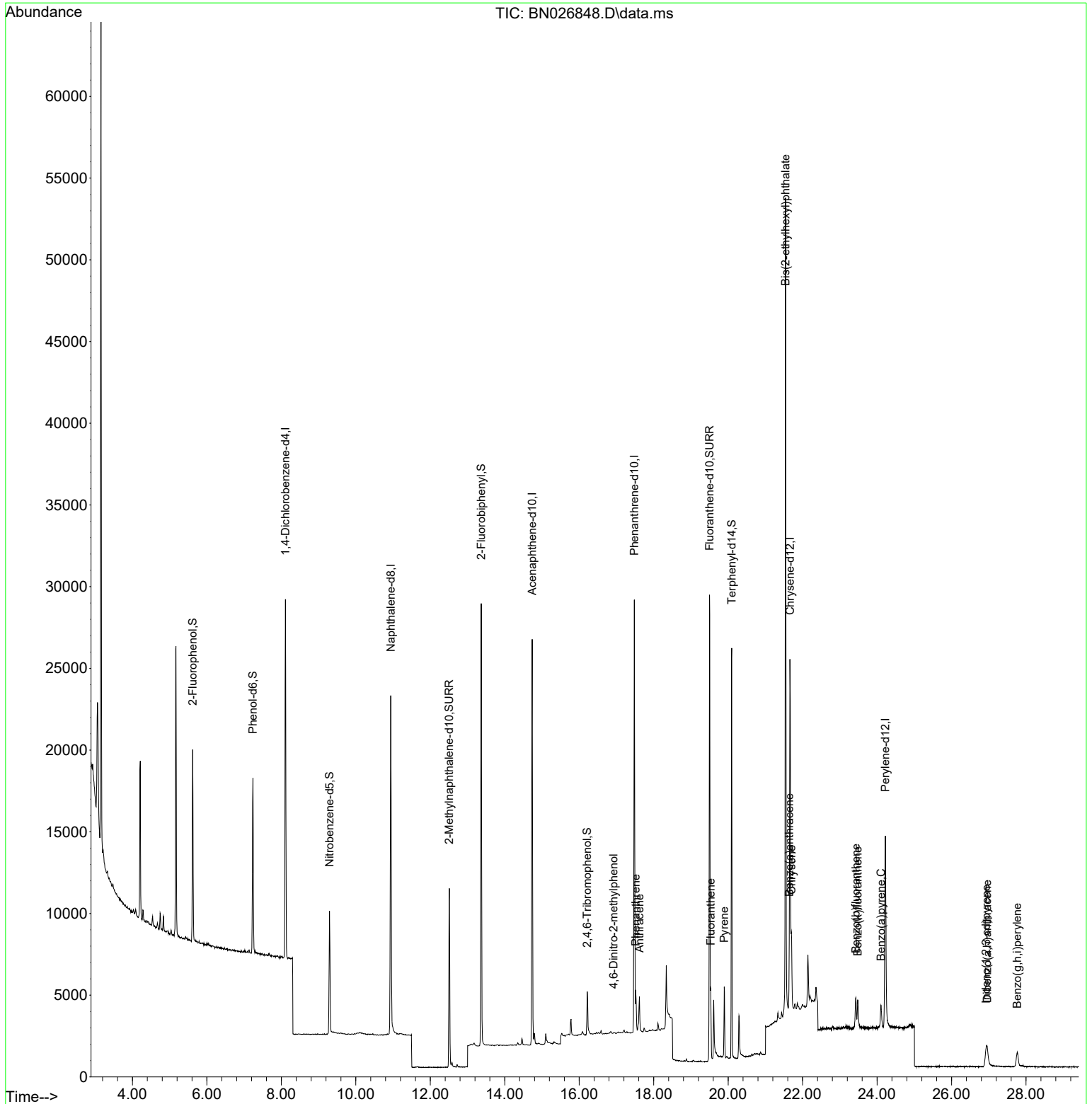
Compound	R.T.	QIon	Response	Conc	Units	Dev(Min)	
Internal Standards							
1) 1,4-Dichlorobenzene-d4	8.109	152	10637	0.400	ng	0.00	
7) Naphthalene-d8	10.938	136	28852	0.400	ng	0.00	
13) Acenaphthene-d10	14.737	164	14818	0.400	ng	0.00	
19) Phenanthrene-d10	17.480	188	34428	0.400	ng	0.00	
29) Chrysene-d12	21.659	240	21670	0.400	ng	# 0.00	
35) Perylene-d12	24.221	264	19250	0.400	ng	# 0.00	
System Monitoring Compounds							
4) 2-Fluorophenol	5.618	112	9614	0.357	ng	0.00	
5) Phenol-d6	7.236	99	10517	0.302	ng	0.00	
8) Nitrobenzene-d5	9.294	82	6322	0.370	ng	0.00	
11) 2-Methylnaphthalene-d10	12.510	152	14916	0.361	ng	0.00	
14) 2,4,6-Tribromophenol	16.214	330	1644	0.326	ng	-0.01	
15) 2-Fluorobiphenyl	13.368	172	22658	0.375	ng	0.00	
27) Fluoranthene-d10	19.500	212	31806	0.385	ng	0.00	
31) Terphenyl-d14	20.094	244	24313	0.538	ng	0.00	
Target Compounds							
20) 4,6-Dinitro-2-methylph...	16.922	198	13	0.023	ng	#	1
25) Phenanthrene	17.517	178	2652	0.025	ng		98
26) Anthracene	17.617	178	2387	0.026	ng		99
28) Fluoranthene	19.532	202	3674	0.032	ng		98
30) Pyrene	19.895	202	3853	0.041	ng		100
32) Benzo(a)anthracene	21.641	228	3080	0.041	ng		94
33) Chrysene	21.704	228	3214	0.039	ng		96
34) Bis(2-ethylhexyl)phtha...	21.542	149	49185	1.995	ng		98
36) Indeno(1,2,3-cd)pyrene	26.928	276	2592	0.033	ng	#	79
37) Benzo(b)fluoranthene	23.429	252	2852	0.038	ng	#	51
38) Benzo(k)fluoranthene	23.481	252	2678	0.034	ng	#	52
39) Benzo(a)pyrene	24.104	252	2400	0.035	ng	#	44
40) Dibenzo(a,h)anthracene	26.957	278	1970	0.032	ng	#	59
41) Benzo(g,h,i)perylene	27.764	276	2312	0.032	ng	#	72

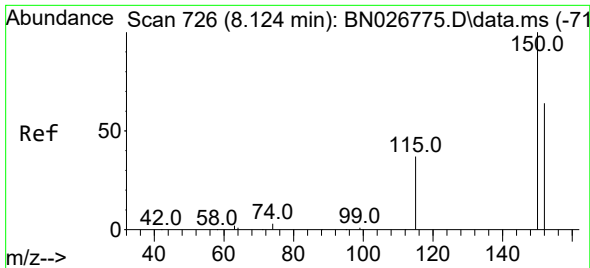
(#) = qualifier out of range (m) = manual integration (+) = signals summed

Data Path : Z:\svoasrv\HPCHEM1\BNA\_N\Data\BN080923\  
 Data File : BN026848.D  
 Acq On : 08 Aug 2023 14:20  
 Operator : MA/JU  
 Sample : PB154594BL  
 Misc :  
 ALS Vial : 12 Sample Multiplier: 1

Instrument :  
 BNA\_N  
 ClientSampleId :  
 PB154594BL

Quant Time: Aug 09 01:10:00 2023  
 Quant Method : Z:\svoasrv\HPCHEM1\BNA\_N\Methods\8270-SIM-BN080123.M  
 Quant Title : ASP BNA STANDARDS FOR 5 POINT CALIBRATION  
 QLast Update : Wed Aug 09 01:06:23 2023  
 Response via : Initial Calibration

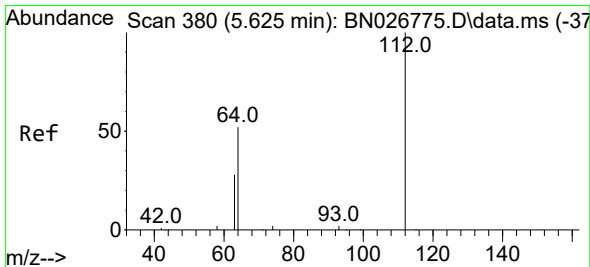
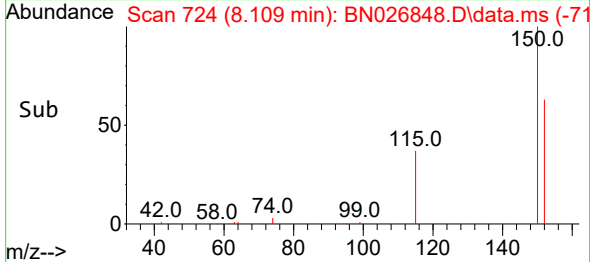
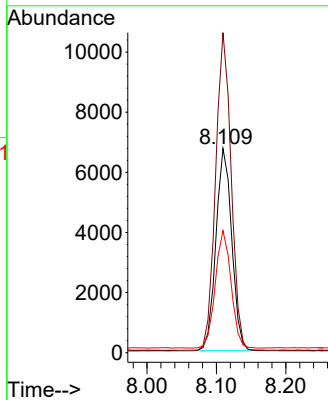
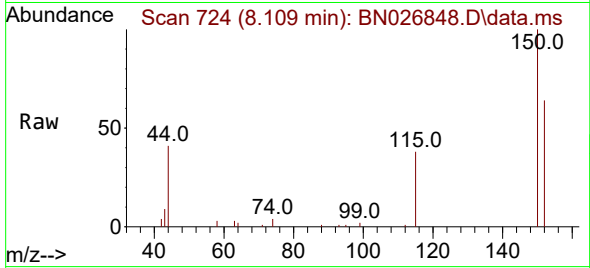




#1  
 1,4-Dichlorobenzene-d4  
 Concen: 0.400 ng  
 RT: 8.109 min Scan# 71  
 Delta R.T. -0.001 min  
 Lab File: BN026848.D  
 Acq: 08 Aug 2023 14:20

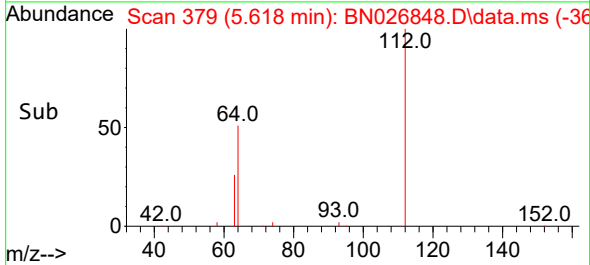
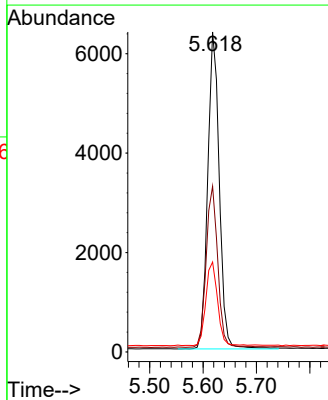
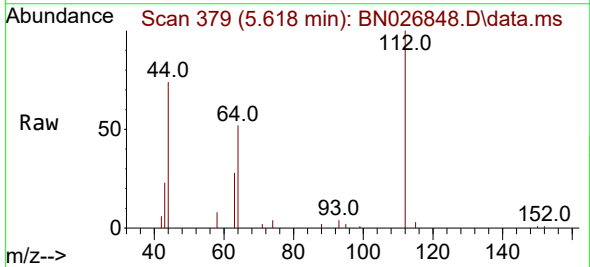
Instrument :  
 BNA\_N  
 ClientSampleId :  
 PB154594BL

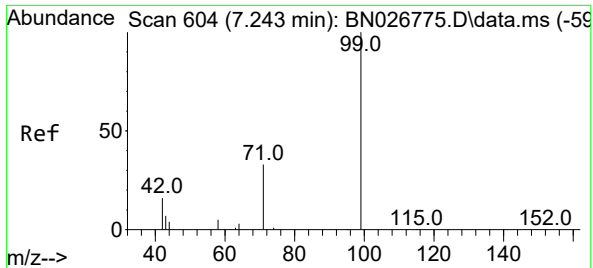
Tgt Ion:152 Resp: 10637  
 Ion Ratio Lower Upper  
 152 100  
 150 156.8 123.8 185.8  
 115 59.8 48.0 72.0



#4  
 2-Fluorophenol  
 Concen: 0.357 ng  
 RT: 5.618 min Scan# 379  
 Delta R.T. -0.000 min  
 Lab File: BN026848.D  
 Acq: 08 Aug 2023 14:20

Tgt Ion:112 Resp: 9614  
 Ion Ratio Lower Upper  
 112 100  
 64 51.0 42.2 63.2  
 63 26.5 22.7 34.1



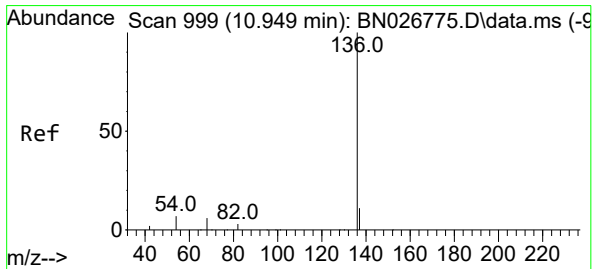
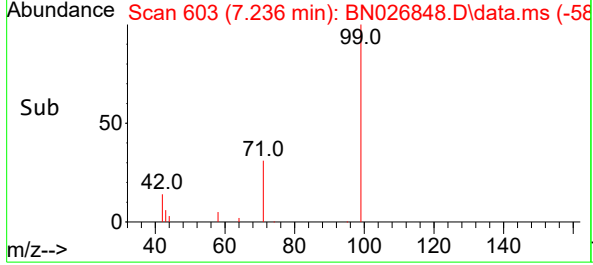
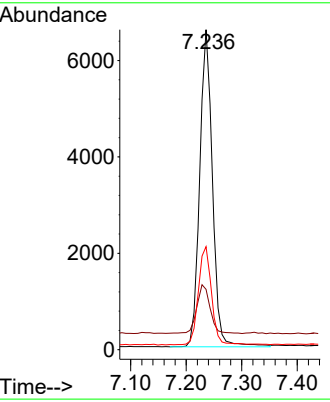
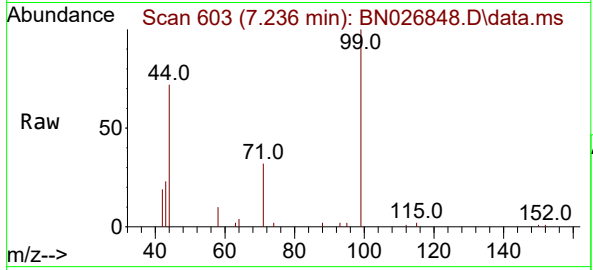


#5  
 Phenol-d6  
 Concen: 0.302 ng  
 RT: 7.236 min Scan# 603  
 Delta R.T. -0.000 min  
 Lab File: BN026848.D  
 Acq: 08 Aug 2023 14:20

Instrument : BNA\_N  
 ClientSampleId : PB154594BL

Tgt Ion: 99 Resp: 10517

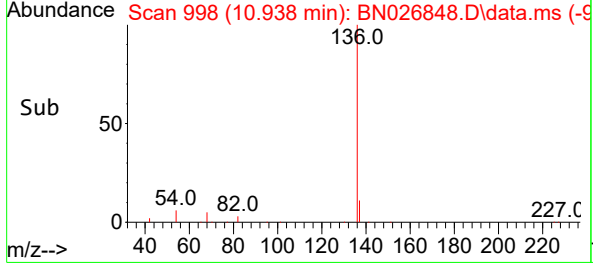
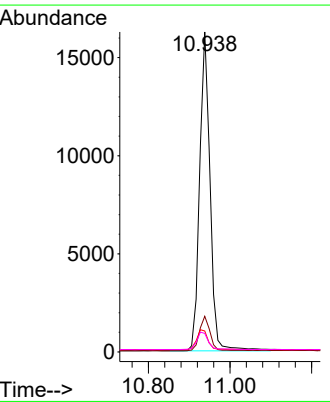
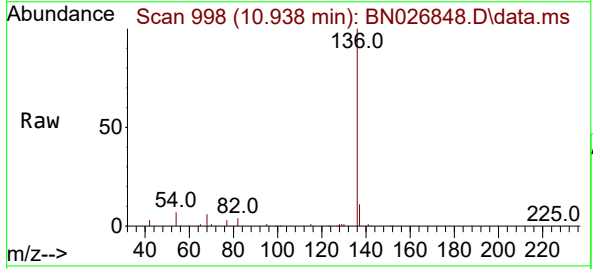
Ion	Ratio	Lower	Upper
99	100		
42	16.1	14.6	22.0
71	32.0	26.6	40.0

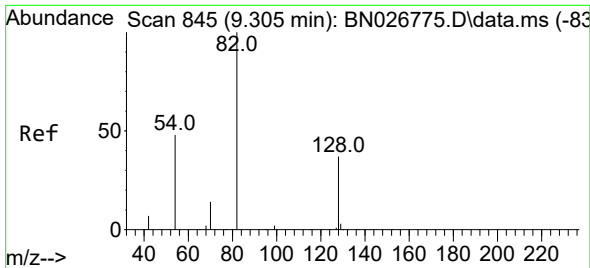


#7  
 Naphthalene-d8  
 Concen: 0.400 ng  
 RT: 10.938 min Scan# 998  
 Delta R.T. -0.000 min  
 Lab File: BN026848.D  
 Acq: 08 Aug 2023 14:20

Tgt Ion: 136 Resp: 28852

Ion	Ratio	Lower	Upper
136	100		
137	11.1	9.0	13.4
54	6.6	6.2	9.2
68	5.8	5.5	8.3

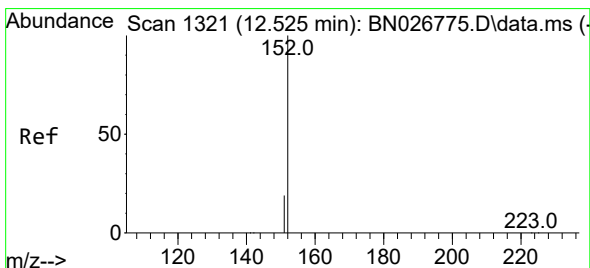
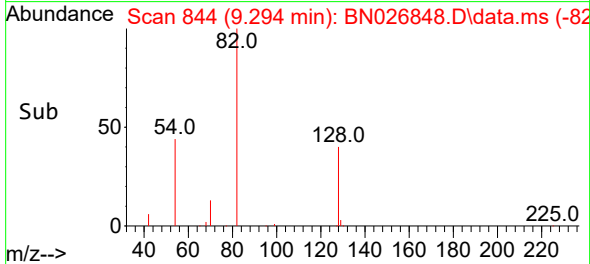
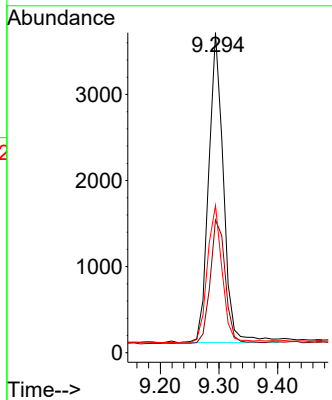
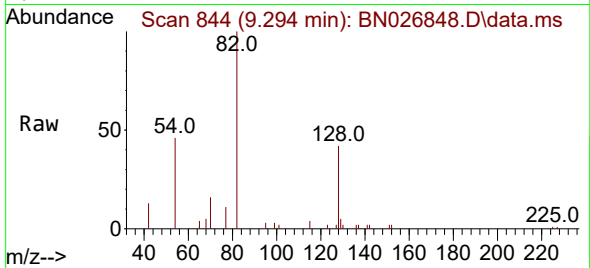




#8  
 Nitrobenzene-d5  
 Concen: 0.370 ng  
 RT: 9.294 min Scan# 844  
 Delta R.T. -0.000 min  
 Lab File: BN026848.D  
 Acq: 08 Aug 2023 14:20

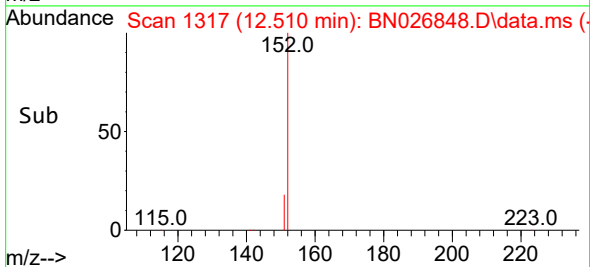
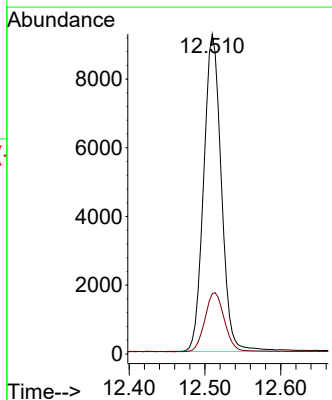
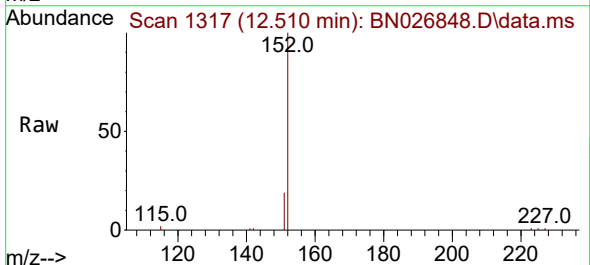
Instrument :  
 BNA\_N  
 ClientSampleId :  
 PB154594BL

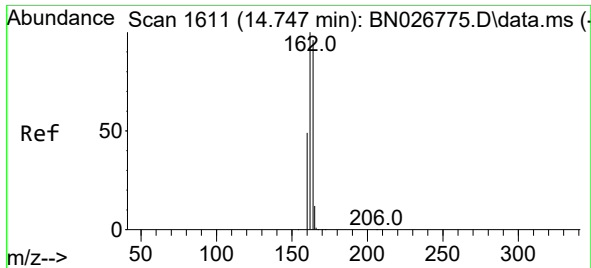
Tgt Ion	Resp	Lower	Upper
82	6322		
128	41.5	30.5	45.7
54	46.0	39.4	59.2



#11  
 2-Methylnaphthalene-d10  
 Concen: 0.361 ng  
 RT: 12.510 min Scan# 1317  
 Delta R.T. -0.004 min  
 Lab File: BN026848.D  
 Acq: 08 Aug 2023 14:20

Tgt Ion	Resp	Lower	Upper
152	14916		
151	20.9	16.5	24.7



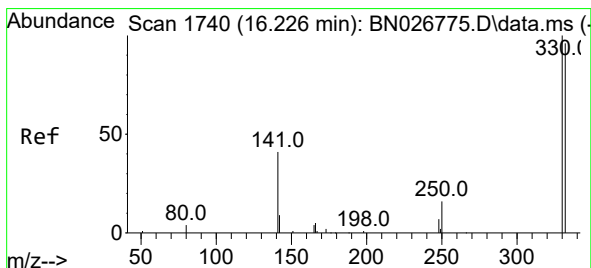
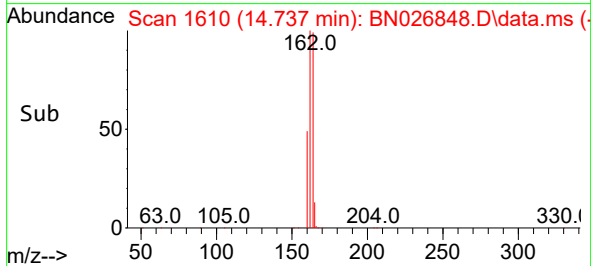
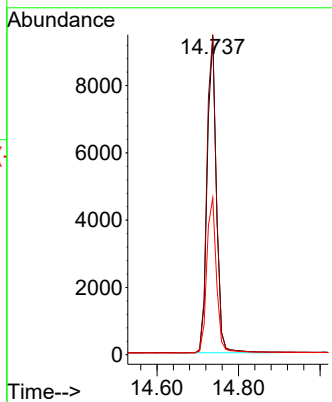
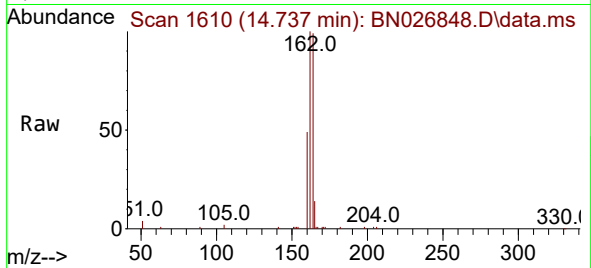


#13  
 Acenaphthene-d10  
 Concen: 0.400 ng  
 RT: 14.737 min Scan# 1610  
 Delta R.T. -0.000 min  
 Lab File: BN026848.D  
 Acq: 08 Aug 2023 14:20

Instrument : BNA\_N  
 Client Sample Id : PB154594BL

Tgt Ion:164 Resp: 14818

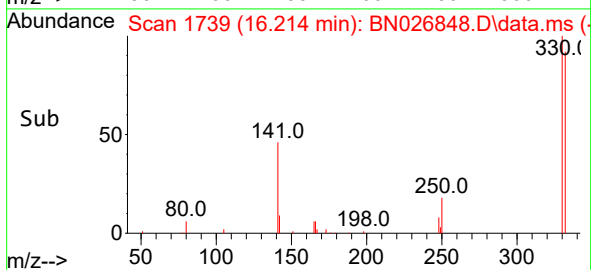
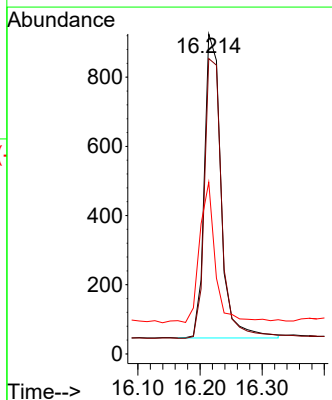
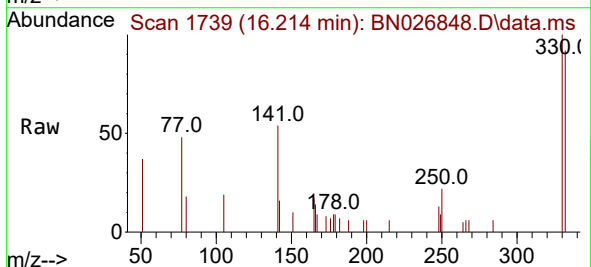
Ion	Ratio	Lower	Upper
164	100		
162	100.8	83.0	124.6
160	49.4	40.8	61.2

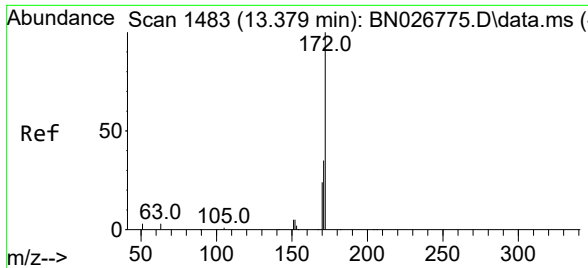


#14  
 2,4,6-Tribromophenol  
 Concen: 0.326 ng  
 RT: 16.214 min Scan# 1739  
 Delta R.T. -0.012 min  
 Lab File: BN026848.D  
 Acq: 08 Aug 2023 14:20

Tgt Ion:330 Resp: 1644

Ion	Ratio	Lower	Upper
330	100		
332	95.4	77.8	116.6
141	40.9	34.8	52.2



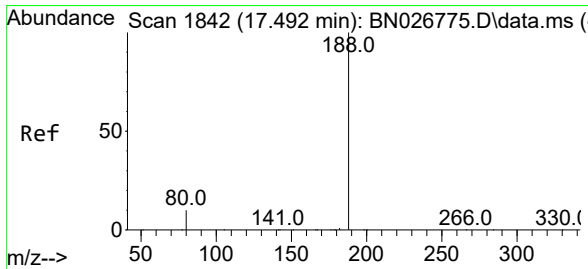
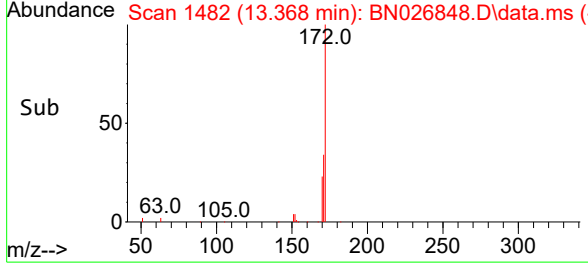
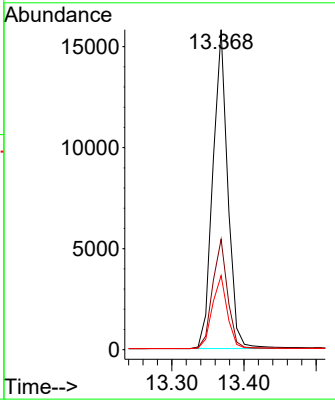
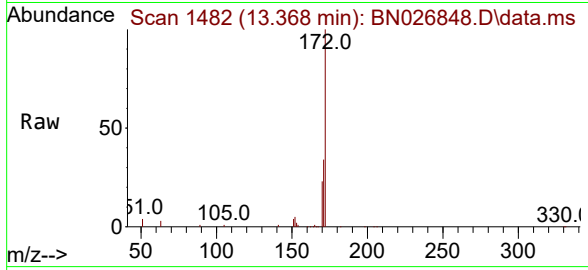


#15  
 2-Fluorobiphenyl  
 Concen: 0.375 ng  
 RT: 13.368 min Scan# 14  
 Delta R.T. -0.000 min  
 Lab File: BN026848.D  
 Acq: 08 Aug 2023 14:20

Instrument : BNA\_N  
 ClientSampleId : PB154594BL

Tgt Ion:172 Resp: 22658

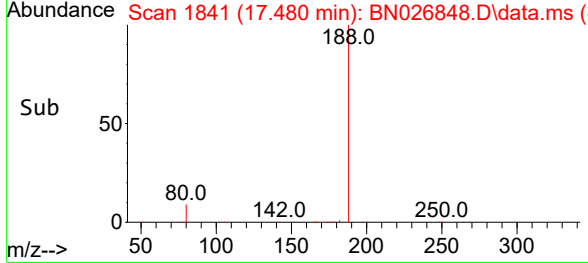
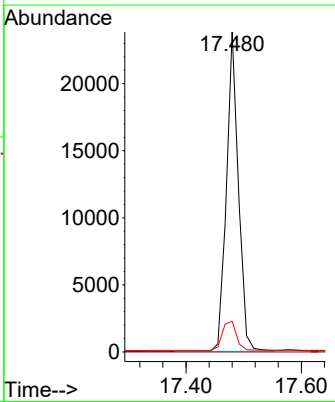
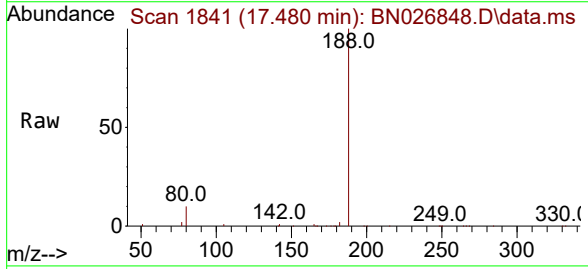
Ion	Ratio	Lower	Upper
172	100		
171	34.5	28.0	42.0
170	23.1	19.2	28.8

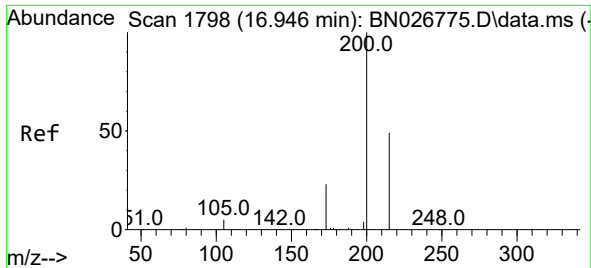


#19  
 Phenanthrene-d10  
 Concen: 0.400 ng  
 RT: 17.480 min Scan# 1841  
 Delta R.T. -0.000 min  
 Lab File: BN026848.D  
 Acq: 08 Aug 2023 14:20

Tgt Ion:188 Resp: 34428

Ion	Ratio	Lower	Upper
188	100		
94	0.0	0.0	0.0
80	9.6	8.0	12.0

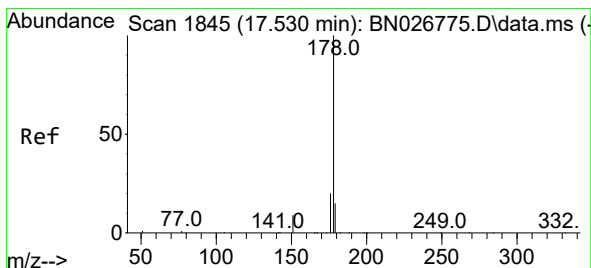
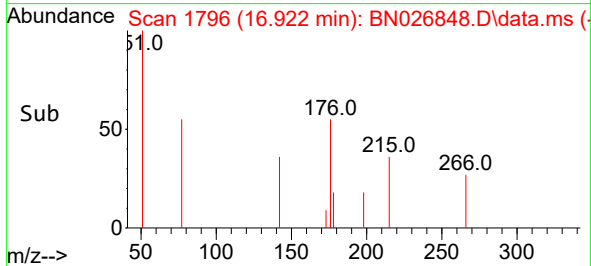
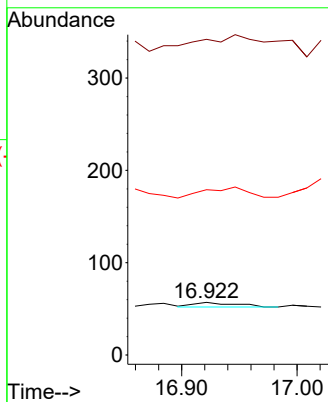
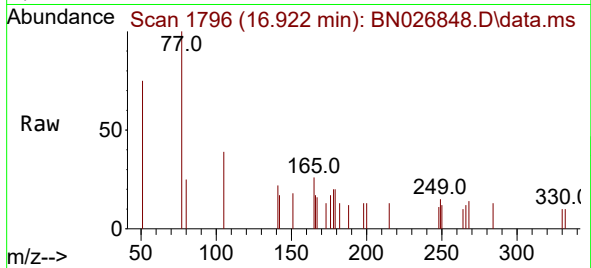




#20  
 4,6-Dinitro-2-methylphenol  
 Concen: 0.023 ng  
 RT: 16.922 min Scan# 11  
 Delta R.T. -0.012 min  
 Lab File: BN026848.D  
 Acq: 08 Aug 2023 14:20

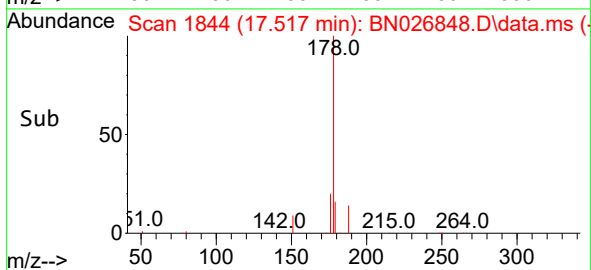
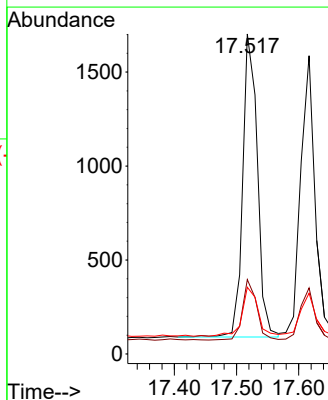
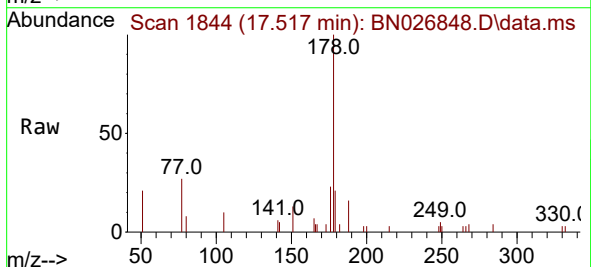
Instrument :  
 BNA\_N  
 ClientSampleId :  
 PB154594BL

Tgt Ion:198 Resp: 13  
 Ion Ratio Lower Upper  
 198 100  
 51 600.0 150.5 225.7#  
 105 314.0 165.0 247.6#

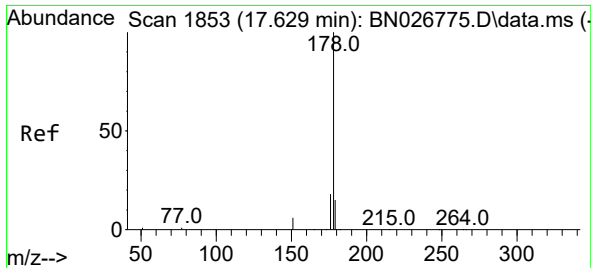


#25  
 Phenanthrene  
 Concen: 0.025 ng  
 RT: 17.517 min Scan# 1844  
 Delta R.T. -0.012 min  
 Lab File: BN026848.D  
 Acq: 08 Aug 2023 14:20

Tgt Ion:178 Resp: 2652  
 Ion Ratio Lower Upper  
 178 100  
 176 19.3 15.4 23.0  
 179 17.3 12.2 18.2



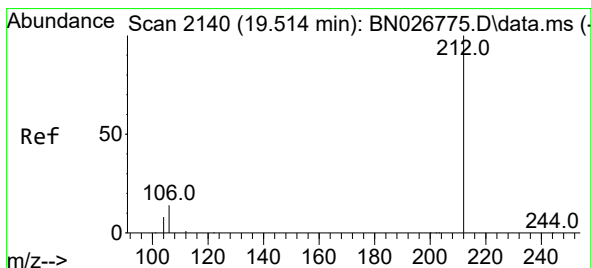
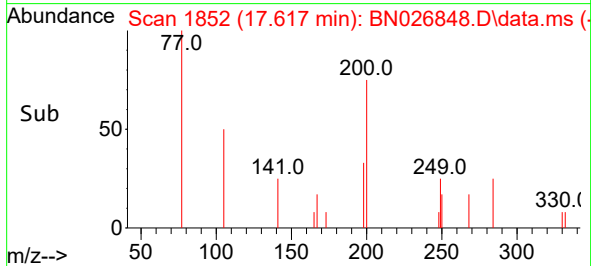
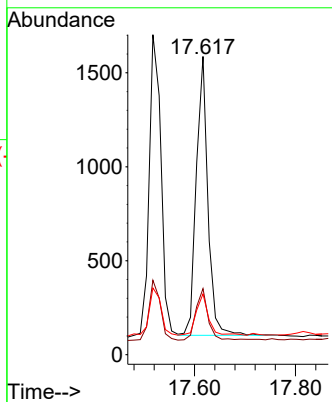
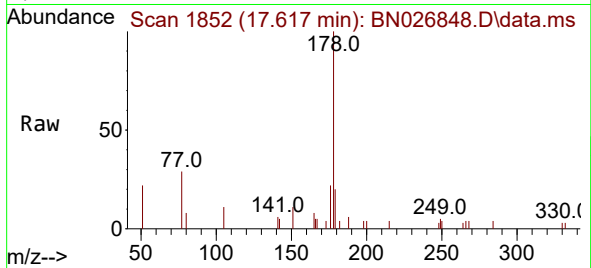




#26  
 Anthracene  
 Concen: 0.026 ng  
 RT: 17.617 min Scan# 11  
 Delta R.T. -0.000 min  
 Lab File: BN026848.D  
 Acq: 08 Aug 2023 14:20

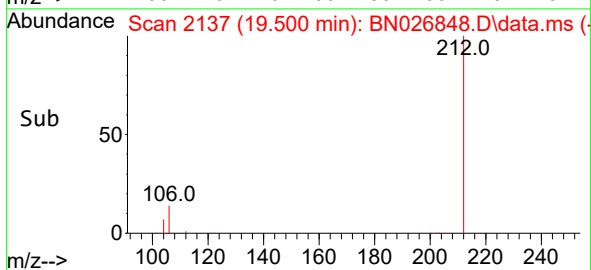
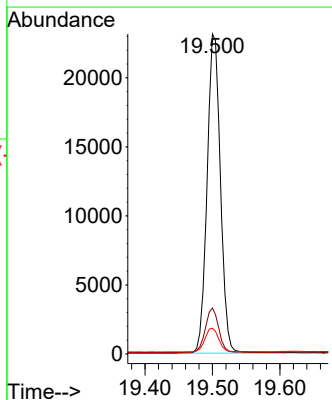
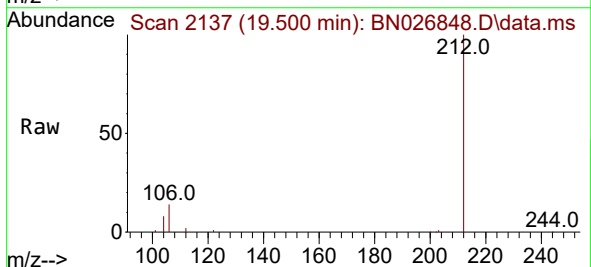
Instrument :  
 BNA\_N  
 ClientSampleId :  
 PB154594BL

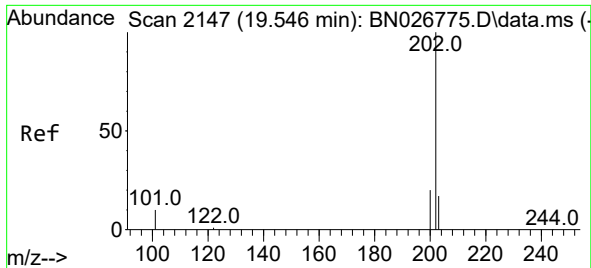
Tgt Ion:178 Resp: 2387  
 Ion Ratio Lower Upper  
 178 100  
 176 18.9 14.9 22.3  
 179 15.5 12.2 18.2



#27  
 Fluoranthene-d10  
 Concen: 0.385 ng  
 RT: 19.500 min Scan# 2137  
 Delta R.T. -0.005 min  
 Lab File: BN026848.D  
 Acq: 08 Aug 2023 14:20

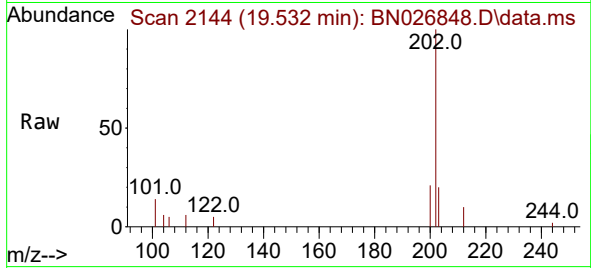
Tgt Ion:212 Resp: 31806  
 Ion Ratio Lower Upper  
 212 100  
 106 14.1 11.7 17.5  
 104 7.7 6.4 9.6



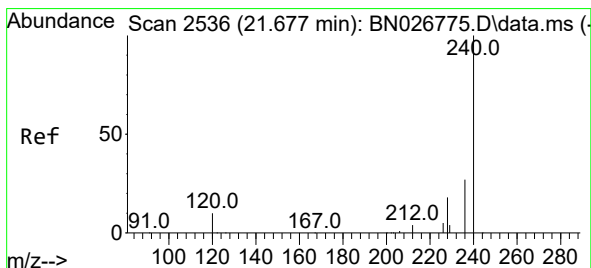
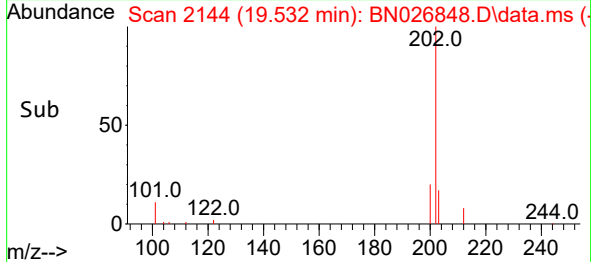
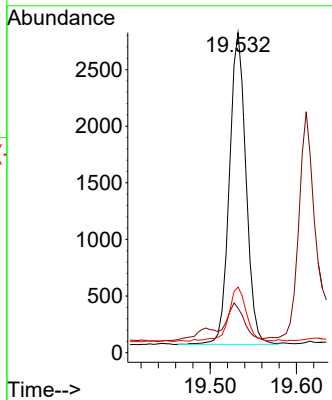


#28  
 Fluoranthene  
 Concen: 0.032 ng  
 RT: 19.532 min Scan# 2144  
 Delta R.T. -0.000 min  
 Lab File: BN026848.D  
 Acq: 08 Aug 2023 14:20

Instrument :  
 BNA\_N  
 Client Sample Id :  
 PB154594BL

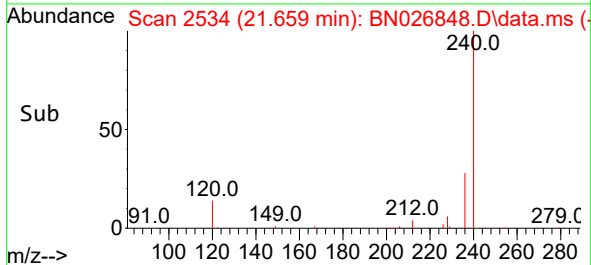
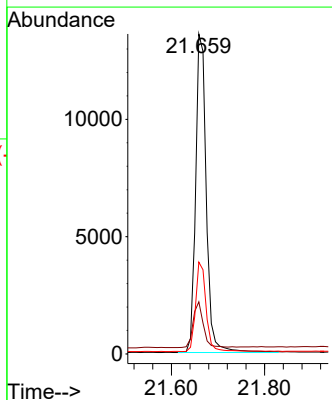
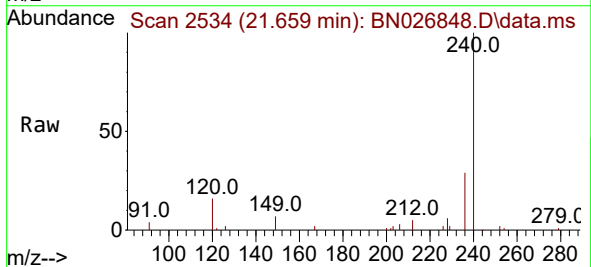


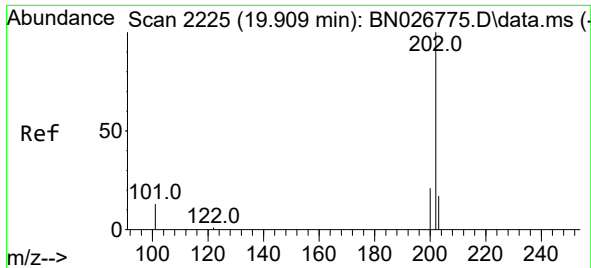
Tgt Ion: 202 Resp: 3674  
 Ion Ratio Lower Upper  
 202 100  
 101 11.2 9.2 13.8  
 203 18.6 13.7 20.5



#29  
 Chrysene-d12  
 Concen: 0.400 ng  
 RT: 21.659 min Scan# 2534  
 Delta R.T. -0.009 min  
 Lab File: BN026848.D  
 Acq: 08 Aug 2023 14:20

Tgt Ion: 240 Resp: 21670  
 Ion Ratio Lower Upper  
 240 100  
 120 16.3 9.2 13.8#  
 236 28.7 21.9 32.9



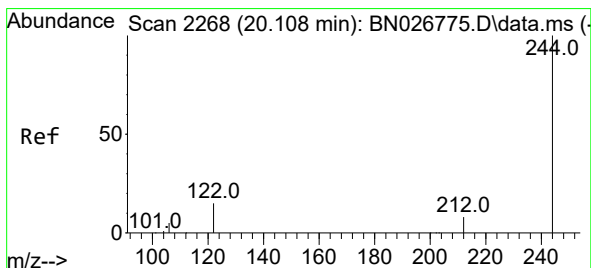
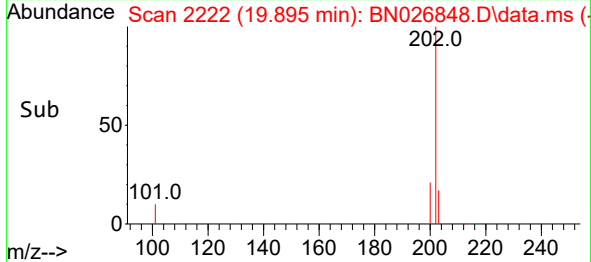
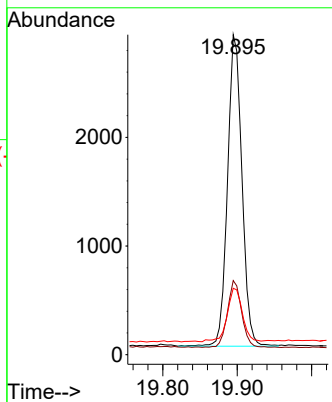
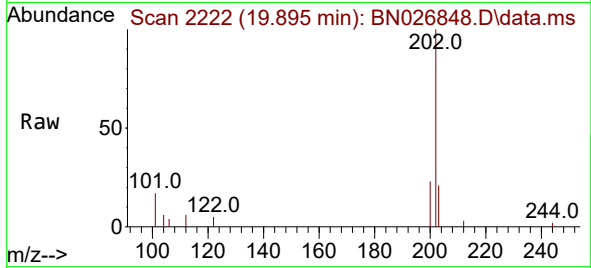


#30  
 Pyrene  
 Concen: 0.041 ng  
 RT: 19.895 min Scan# 21  
 Delta R.T. -0.005 min  
 Lab File: BN026848.D  
 Acq: 08 Aug 2023 14:20

Instrument :  
 BNA\_N  
 ClientSampleId :  
 PB154594BL

Tgt Ion: 202 Resp: 3853

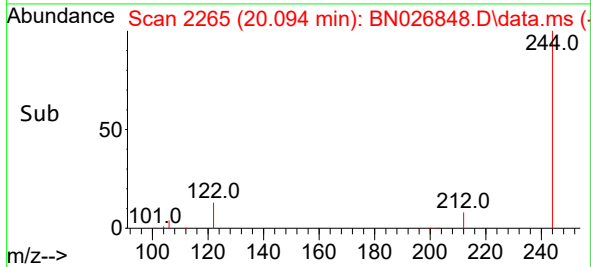
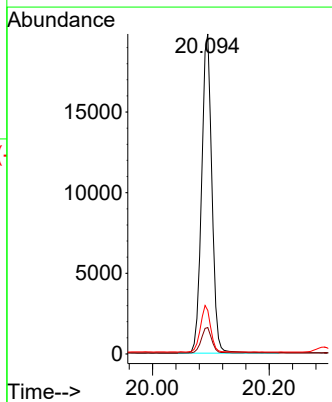
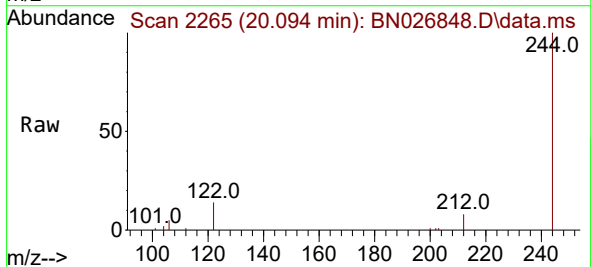
Ion	Ratio	Lower	Upper
202	100		
200	21.1	16.8	25.2
203	18.0	14.2	21.2

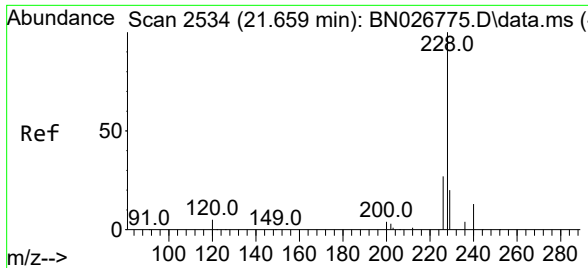


#31  
 Terphenyl-d14  
 Concen: 0.538 ng  
 RT: 20.094 min Scan# 2265  
 Delta R.T. -0.000 min  
 Lab File: BN026848.D  
 Acq: 08 Aug 2023 14:20

Tgt Ion: 244 Resp: 24313

Ion	Ratio	Lower	Upper
244	100		
212	8.2	7.0	10.4
122	13.6	12.3	18.5



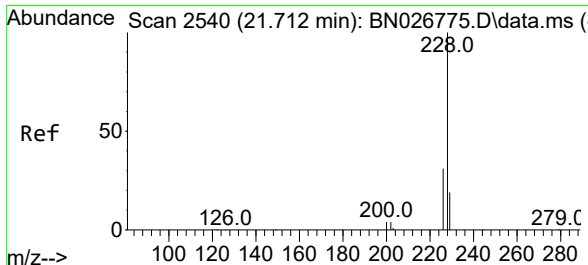
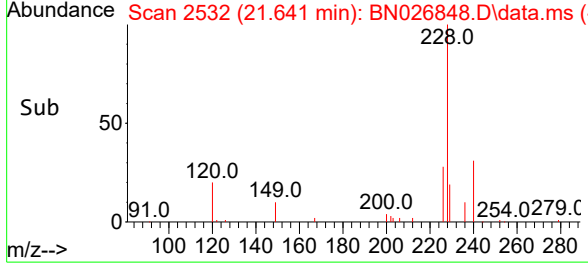
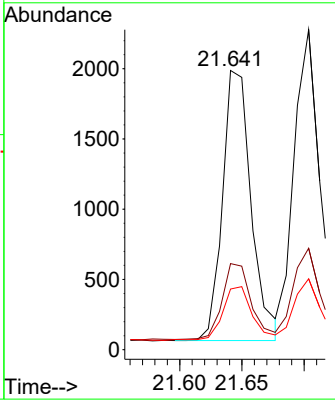
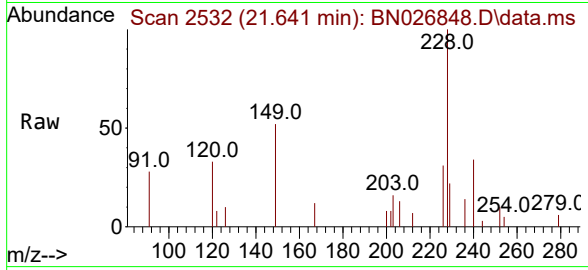


#32  
 Benzo(a)anthracene  
 Concen: 0.041 ng  
 RT: 21.641 min Scan# 21  
 Delta R.T. -0.009 min  
 Lab File: BN026848.D  
 Acq: 08 Aug 2023 14:20

Instrument : BNA\_N  
 ClientSampleId : PB154594BL

Tgt Ion:228 Resp: 3080

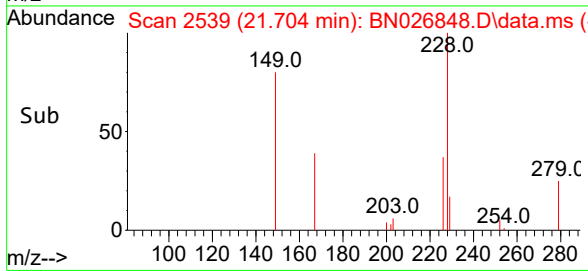
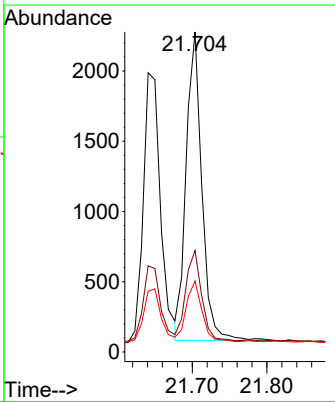
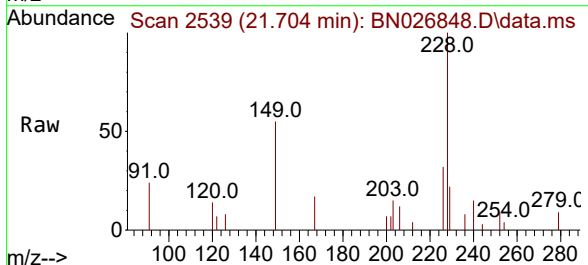
Ion	Ratio	Lower	Upper
228	100		
226	30.8	21.9	32.9
229	21.7	15.8	23.8

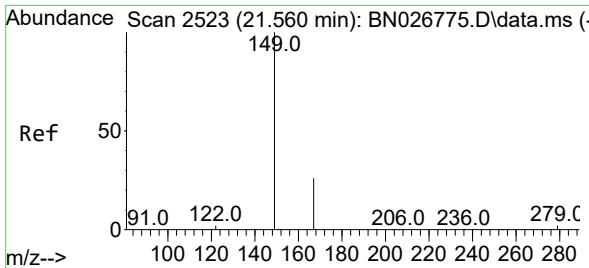


#33  
 Chrysene  
 Concen: 0.039 ng  
 RT: 21.704 min Scan# 2539  
 Delta R.T. -0.000 min  
 Lab File: BN026848.D  
 Acq: 08 Aug 2023 14:20

Tgt Ion:228 Resp: 3214

Ion	Ratio	Lower	Upper
228	100		
226	31.7	24.6	36.8
229	22.2	15.4	23.2



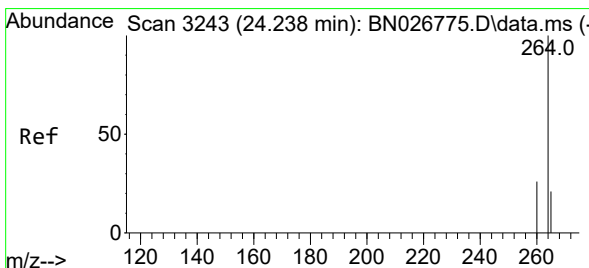
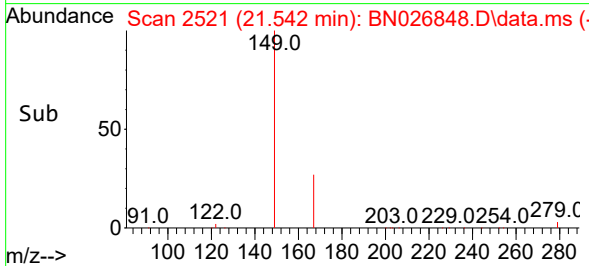
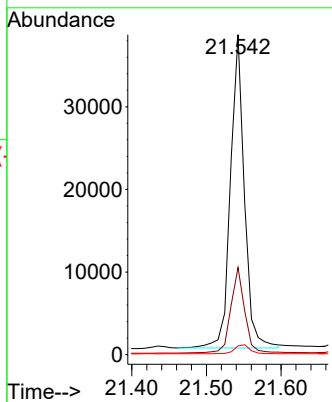
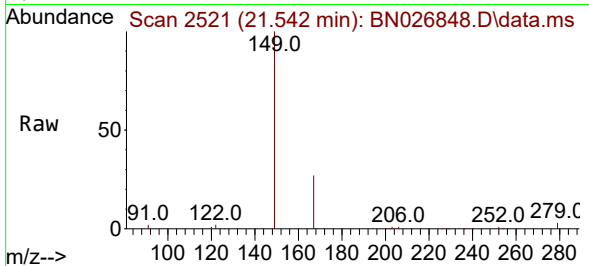


#34  
 Bis(2-ethylhexyl)phthalate  
 Concen: 1.995 ng  
 RT: 21.542 min Scan# 2154  
 Delta R.T. -0.000 min  
 Lab File: BN026848.D  
 Acq: 08 Aug 2023 14:20

Instrument :  
 BNA\_N  
 ClientSampleId :  
 PB154594BL

Tgt Ion:149 Resp: 49185

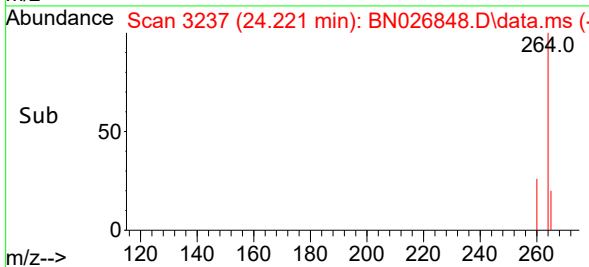
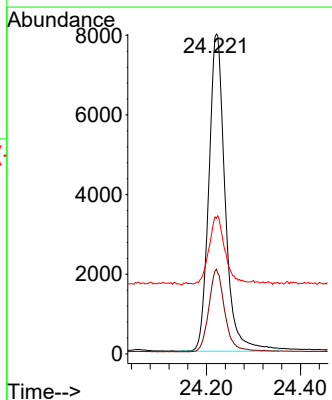
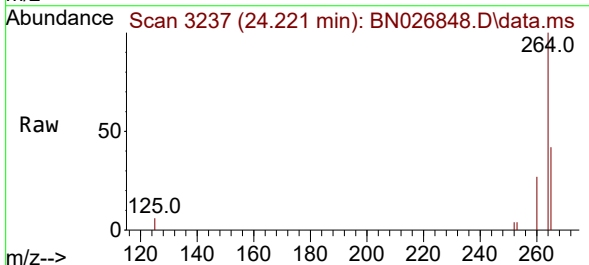
Ion	Ratio	Lower	Upper
149	100		
167	27.1	20.8	31.2
279	3.2	2.4	3.6

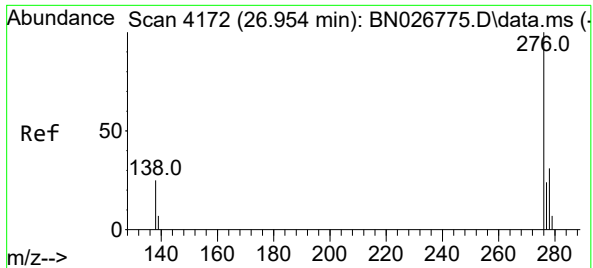


#35  
 Perylene-d12  
 Concen: 0.400 ng  
 RT: 24.221 min Scan# 3237  
 Delta R.T. -0.006 min  
 Lab File: BN026848.D  
 Acq: 08 Aug 2023 14:20

Tgt Ion:264 Resp: 19250

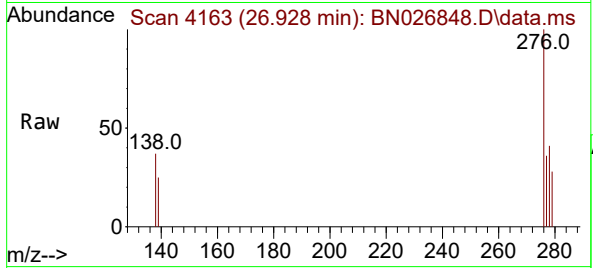
Ion	Ratio	Lower	Upper
264	100		
260	26.5	21.0	31.6
265	42.4	22.6	33.8



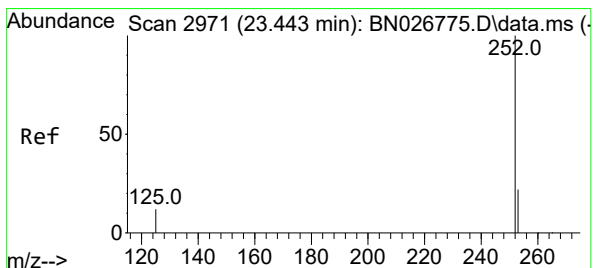
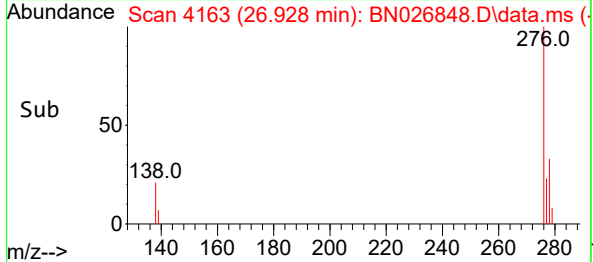
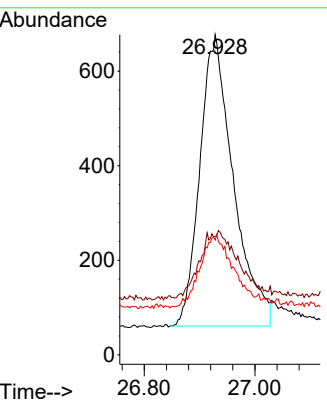


#36  
 Indeno(1,2,3-cd)pyrene  
 Concen: 0.033 ng  
 RT: 26.928 min Scan# 41  
 Delta R.T. -0.003 min  
 Lab File: BN026848.D  
 Acq: 08 Aug 2023 14:20

Instrument :  
 BNA\_N  
 ClientSampleId :  
 PB154594BL

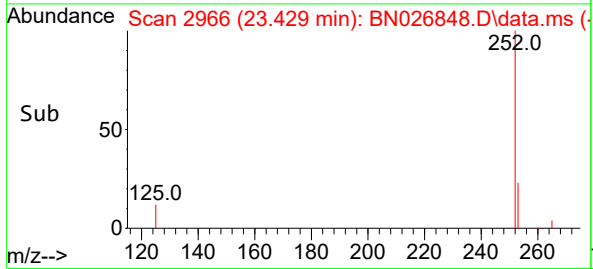
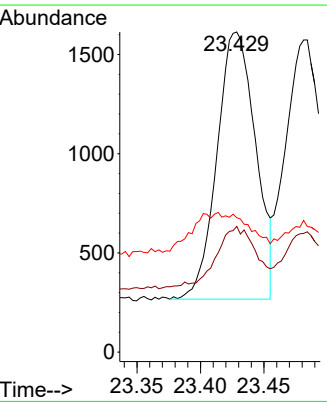
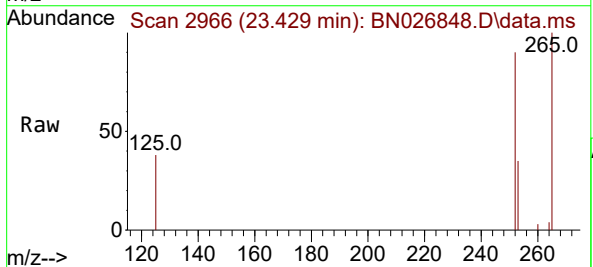


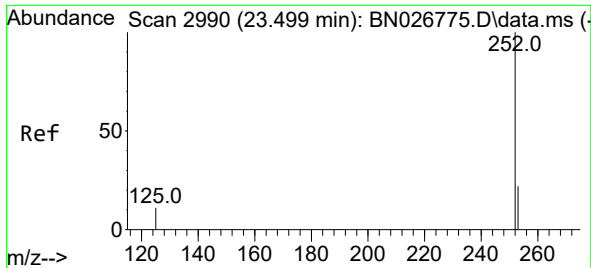
Tgt Ion: 276 Resp: 2592  
 Ion Ratio Lower Upper  
 276 100  
 138 7.4 22.8 34.2#  
 277 25.0 19.9 29.9



#37  
 Benzo(b)fluoranthene  
 Concen: 0.038 ng  
 RT: 23.429 min Scan# 2966  
 Delta R.T. -0.003 min  
 Lab File: BN026848.D  
 Acq: 08 Aug 2023 14:20

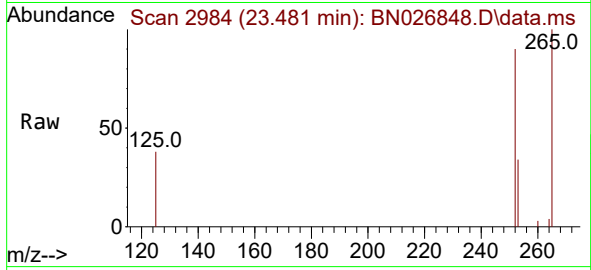
Tgt Ion: 252 Resp: 2852  
 Ion Ratio Lower Upper  
 252 100  
 253 39.3 17.8 26.8#  
 125 41.9 10.8 16.2#



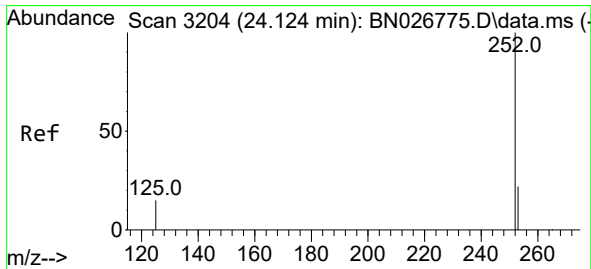
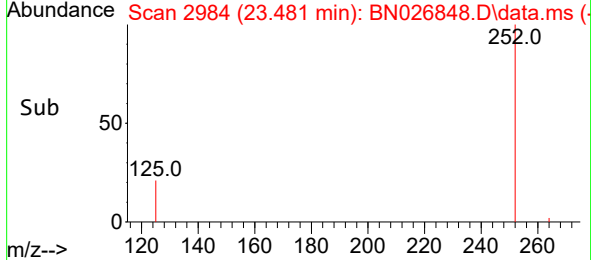
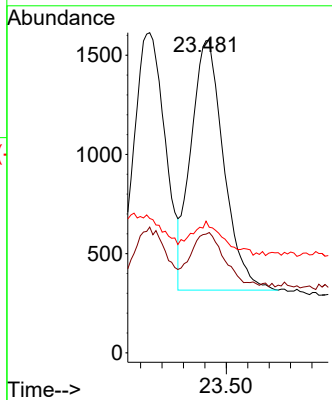


#38  
 Benzo(k)fluoranthene  
 Concen: 0.034 ng  
 RT: 23.481 min Scan# 21  
 Delta R.T. -0.003 min  
 Lab File: BN026848.D  
 Acq: 08 Aug 2023 14:20

Instrument : BNA\_N  
 ClientSampleId : PB154594BL

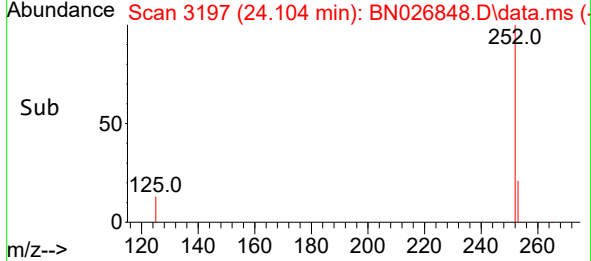
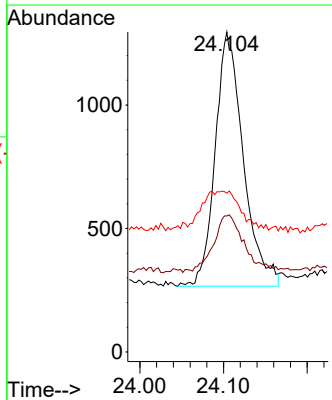
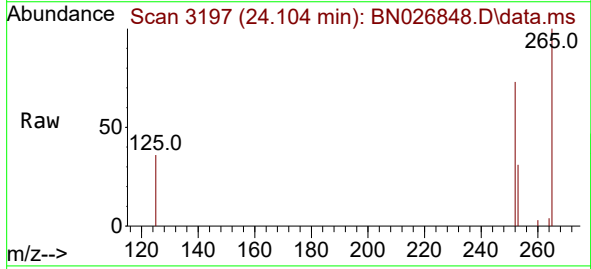


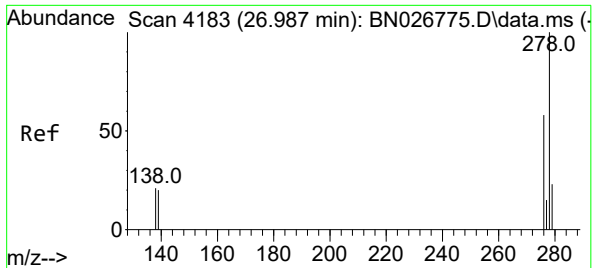
Tgt Ion:252 Resp: 2678  
 Ion Ratio Lower Upper  
 252 100  
 253 38.0 18.0 27.0#  
 125 42.2 9.4 14.2#



#39  
 Benzo(a)pyrene  
 Concen: 0.035 ng  
 RT: 24.104 min Scan# 3197  
 Delta R.T. -0.006 min  
 Lab File: BN026848.D  
 Acq: 08 Aug 2023 14:20

Tgt Ion:252 Resp: 2400  
 Ion Ratio Lower Upper  
 252 100  
 253 42.5 18.5 27.7#  
 125 49.6 12.7 19.1#



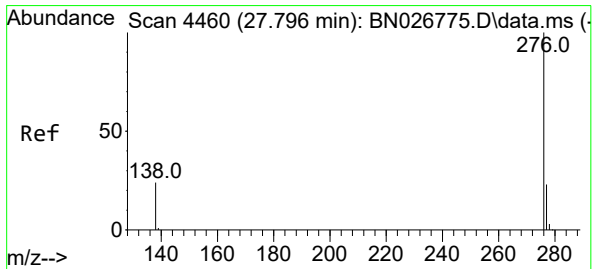
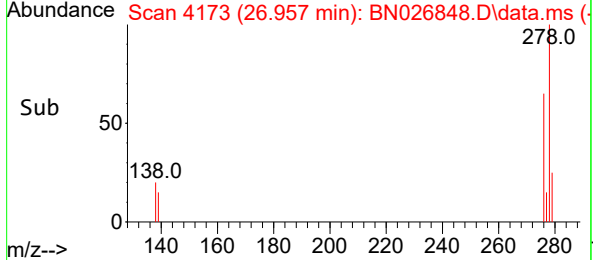
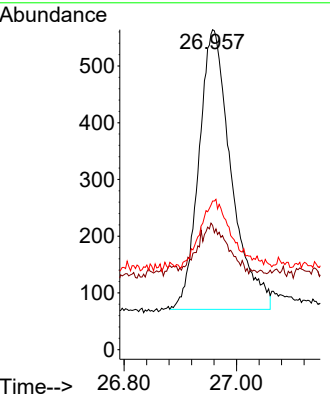
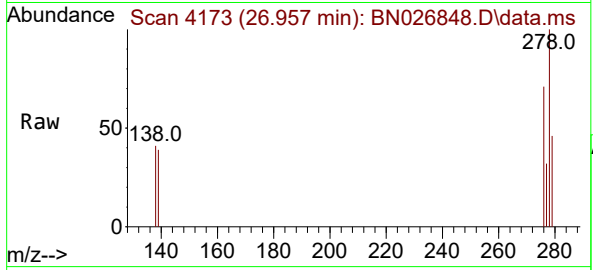


#40  
 Dibenzo(a,h)anthracene  
 Concen: 0.032 ng  
 RT: 26.957 min Scan# 41  
 Delta R.T. -0.009 min  
 Lab File: BN026848.D  
 Acq: 08 Aug 2023 14:20

Instrument : BNA\_N  
 ClientSampleId : PB154594BL

Tgt Ion:278 Resp: 1970

Ion	Ratio	Lower	Upper
278	100		
139	38.8	16.8	25.2#
279	46.5	19.5	29.3#



#41  
 Benzo(g,h,i)perylene  
 Concen: 0.032 ng  
 RT: 27.764 min Scan# 4449  
 Delta R.T. -0.006 min  
 Lab File: BN026848.D  
 Acq: 08 Aug 2023 14:20

Tgt Ion:276 Resp: 2312

Ion	Ratio	Lower	Upper
276	100		
277	36.7	19.1	28.7#
138	40.0	19.8	29.6#

