

Data Path : Z:\SVOASRV\HPCHEM1\BNA N\DATA\BN082120\
 Data File : BN011573.D
 Acq On : 22 Aug 2020 06:04
 Operator : CG/JU
 Sample : L3768-02
 Misc :
 ALS Vial : 18 Sample Multiplier: 1

Instrument :
 BNA_N
 ClientSampleId :
 CS-14

Quant Time: Aug 22 06:42:32 2020
 Quant Method : Z:\SVOASRV\HPCHEM1\BNA N\METHODS\8270-SIM-BN082120.M
 Quant Title : ASP BNA STANDARDS FOR 5 POINT CALIBRATION
 QLast Update : Sat Aug 22 04:52:07 2020
 Response via : Initial Calibration

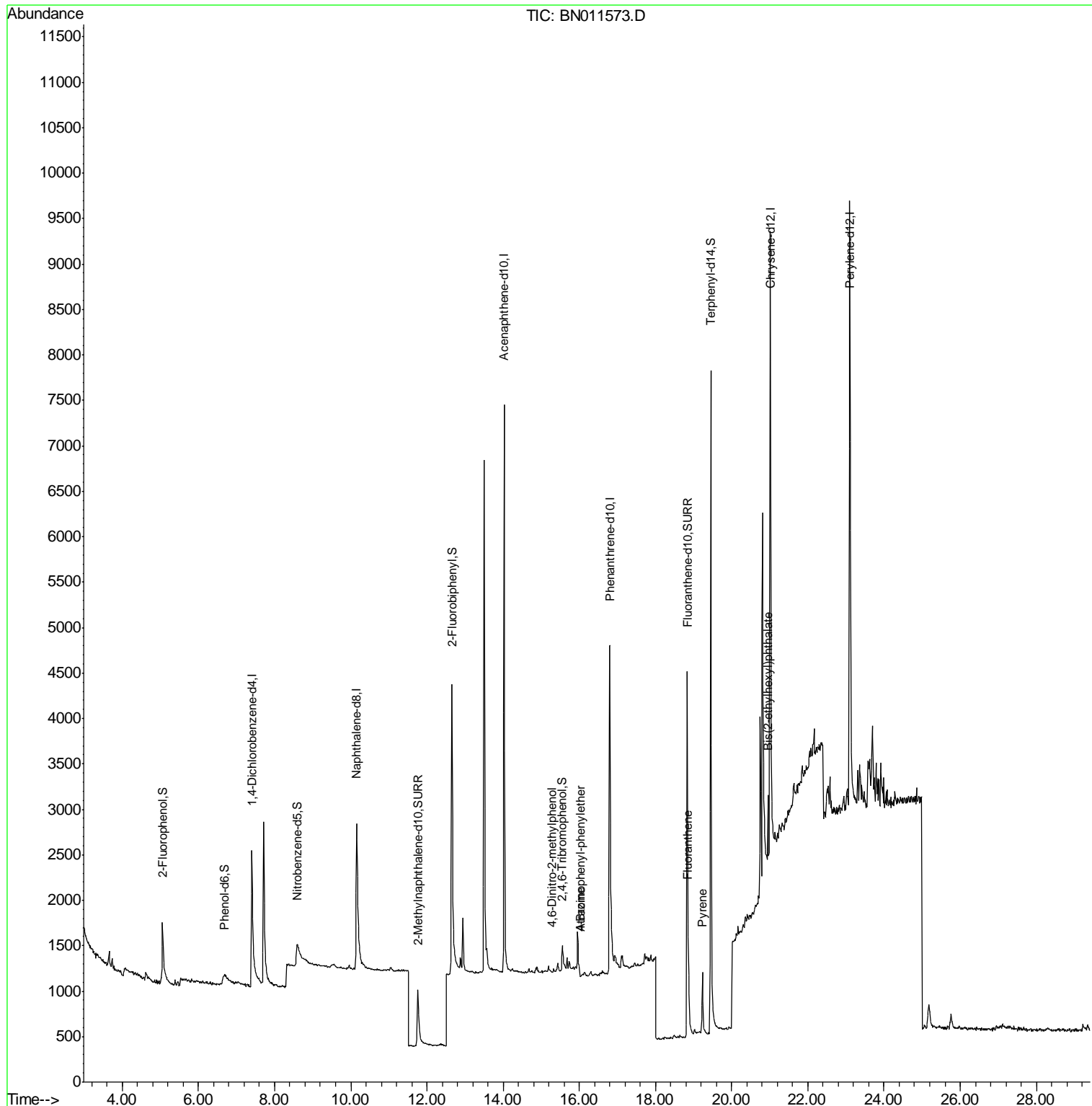
Internal Standards	R.T.	QIon	Response	Conc	Units	Dev(Min)
1) 1,4-Dichlorobenzene-d4	7.40	152	1566	0.40	ng	0.00
7) Naphthalene-d8	10.15	136	4686	0.40	ng	0.00
13) Acenaphthene-d10	14.03	164	3716	0.40	ng	0.00
19) Phenanthrene-d10	16.80	188	8490	0.40	ng	0.01
29) Chrysene-d12	21.01	240	8934	0.40	ng	0.00
36) Perylene-d12	23.10	264	9670	0.40	ng	-0.01
System Monitoring Compounds						
4) 2-Fluorophenol	5.07	112	928	0.28	ng	0.00
5) Phenol-d6	6.69	99	540	0.16	ng	0.06
8) Nitrobenzene-d5	8.59	82	761	0.25	ng	0.04
11) 2-Methylnaphthalene-d10	11.76	152	1676	0.20	ng	0.00
14) 2,4,6-Tribromophenol	15.55	330	419	0.23	ng	0.00
15) 2-Fluorobiphenyl	12.66	172	4775	0.31	ng	0.00
27) Fluoranthene-d10	18.83	212	6279	0.22	ng	0.00
31) Terphenyl-d14	19.45	244	9639	0.41	ng	0.00
Target Compounds						
20) 4,6-Dinitro-2-methylphenol	15.27	198	1	0.176	ng	# 39
21) 4-Bromophenyl-phenylether	16.03	248	134	0.072	ng	# 63
23) Atrazine	16.04	200	172	0.039	ng	# 14
28) Fluoranthene	18.86	202	746	0.022	ng	# 98
30) Pyrene	19.23	202	790	0.022	ng	# 91
34) Bis(2-ethylhexyl)phthalate	20.95	149	762	0.060	ng	91

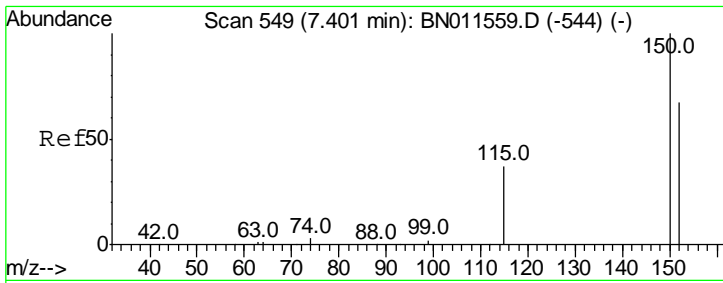
(#) = qualifier out of range (m) = manual integration (+) = signals summed

Data Path : Z:\SVOASRV\HPCHEM1\BNA N\DATA\BN082120\
 Data File : BN011573.D
 Acq On : 22 Aug 2020 06:04
 Operator : CG/JU
 Sample : L3768-02
 Misc :
 ALS Vial : 18 Sample Multiplier: 1

Instrument :
 BNA_N
 ClientSampleId :
 CS-14

Quant Time: Aug 22 06:42:32 2020
 Quant Method : Z:\SVOASRV\HPCHEM1\BNA N\METHODS\8270-SIM-BN082120.M
 Quant Title : ASP BNA STANDARDS FOR 5 POINT CALIBRATION
 QLast Update : Sat Aug 22 04:52:07 2020
 Response via : Initial Calibration

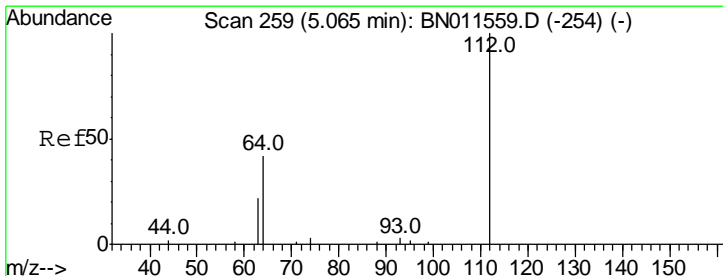
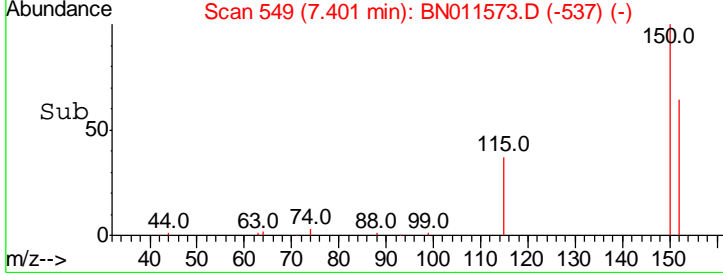
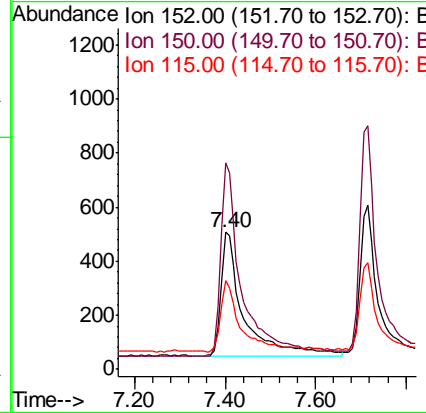
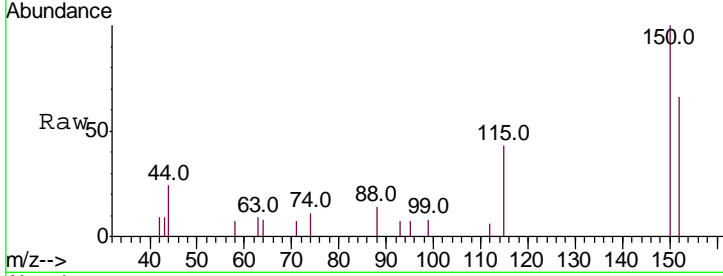




#1
 1,4-Dichlorobenzene-d4
 Concen: 0.400 ng
 RT: 7.40 min Scan# 549
 Delta R.T. 0.00 min
 Lab File: BN011573.D
 Acq: 22 Aug 2020 06:04

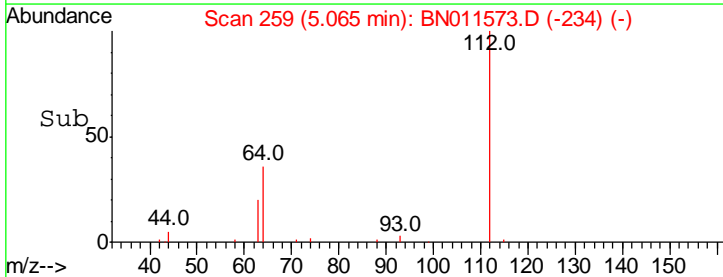
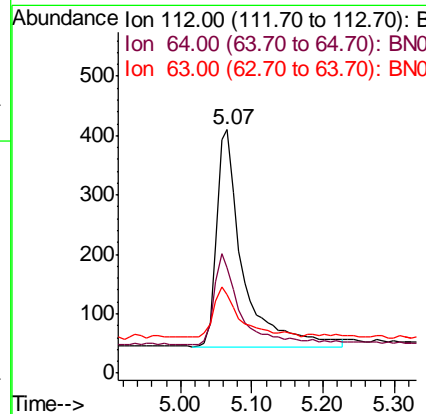
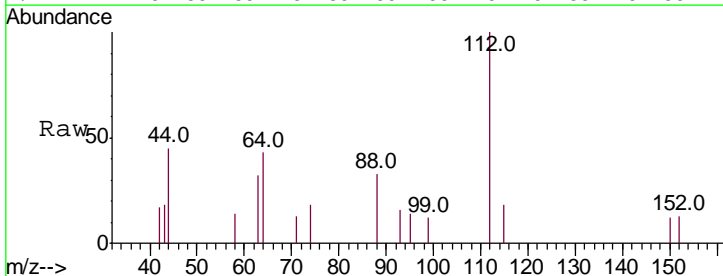
Instrument :
 BNA_N
 ClientSampled :
 CS-14

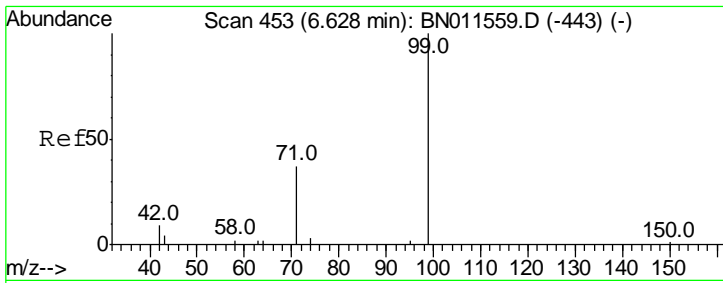
Tgt Ion	Resp	Lower	Upper
152	1566		
152	100		
150	150.6	117.1	175.7
115	64.6	48.7	73.1



#4
 2-Fluorophenol
 Concen: 0.278 ng
 RT: 5.07 min Scan# 259
 Delta R.T. 0.00 min
 Lab File: BN011573.D
 Acq: 22 Aug 2020 06:04

Tgt Ion	Resp	Lower	Upper
112	928		
112	100		
64	40.3	33.9	50.9
63	21.8	17.7	26.5

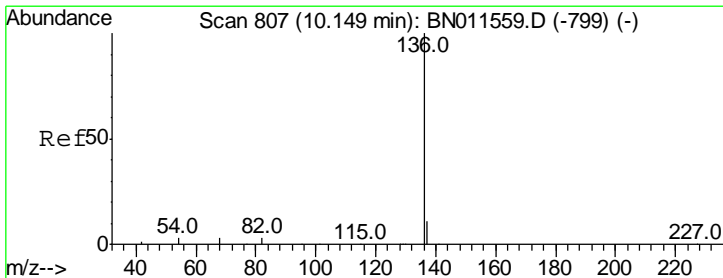
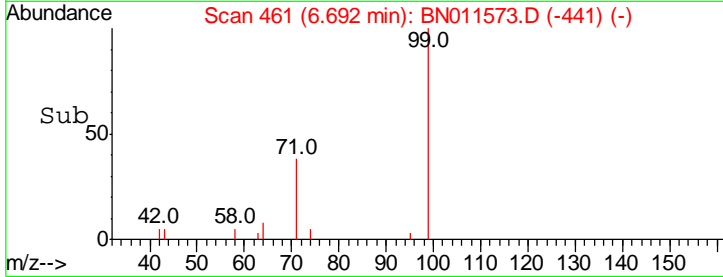
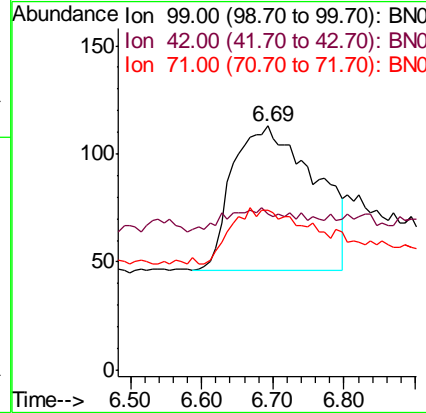
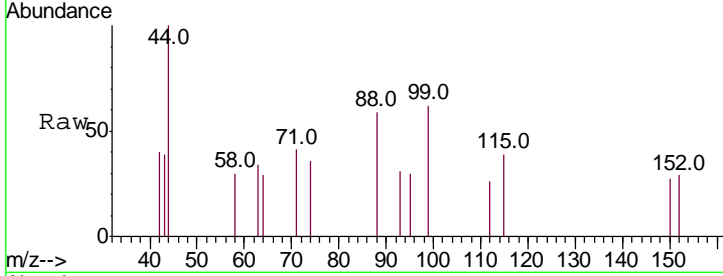




#5
 Phenol-d6
 Concen: 0.160 ng
 RT: 6.69 min Scan# 461
 Delta R.T. 0.06 min
 Lab File: BN011573.D
 Acq: 22 Aug 2020 06:04

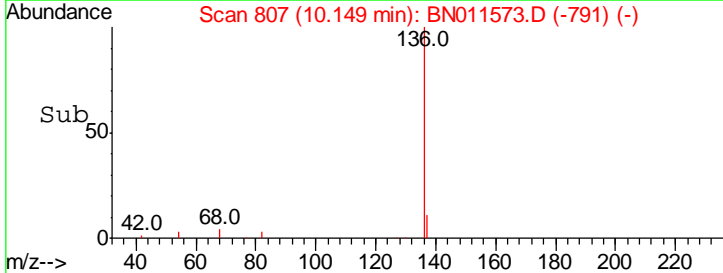
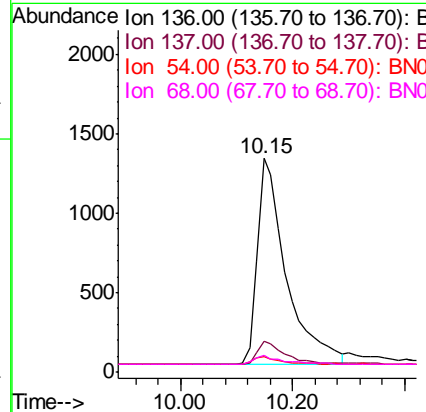
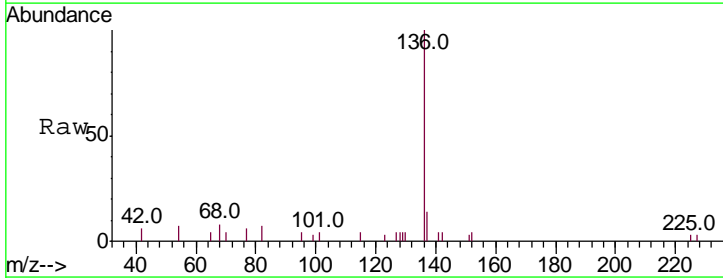
Instrument :
 BNA_N
 ClientSampled :
 CS-14

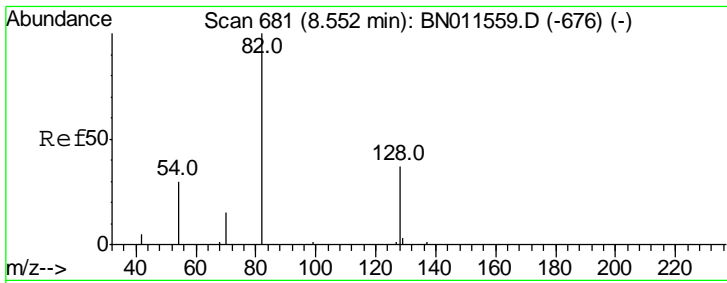
Tgt Ion	Ratio	Lower	Upper
99	100		
42	8.7	9.0	13.4#
71	0.0	30.4	45.6#



#7
 Naphthalene-d8
 Concen: 0.400 ng
 RT: 10.15 min Scan# 807
 Delta R.T. 0.00 min
 Lab File: BN011573.D
 Acq: 22 Aug 2020 06:04

Tgt Ion	Ratio	Lower	Upper
136	100		
137	14.2	11.0	16.4
54	7.1	4.3	6.5#
68	7.9	4.9	7.3#

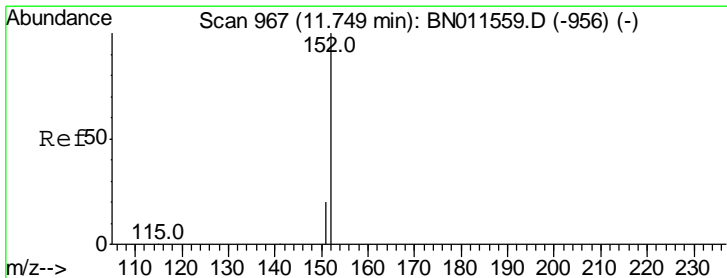
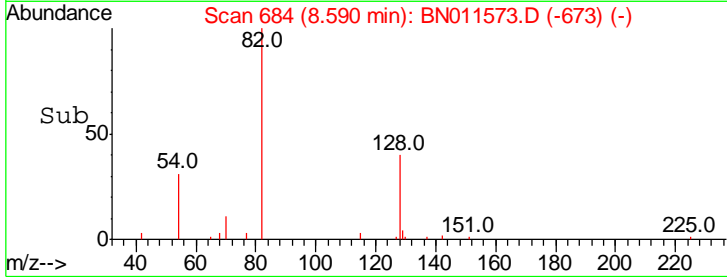
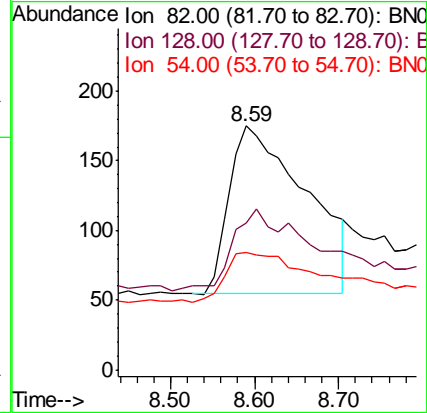
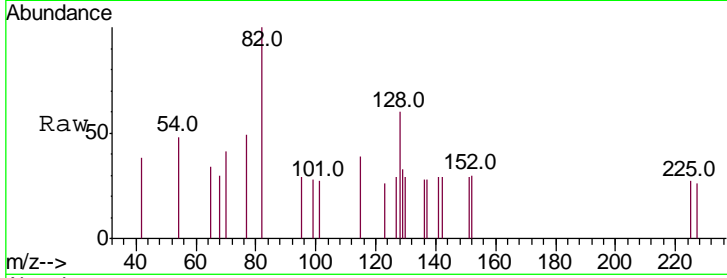




#8
 Nitrobenzene-d5
 Concen: 0.247 ng
 RT: 8.59 min Scan# 684
 Delta R.T. 0.04 min
 Lab File: BN011573.D
 Acq: 22 Aug 2020 06:04

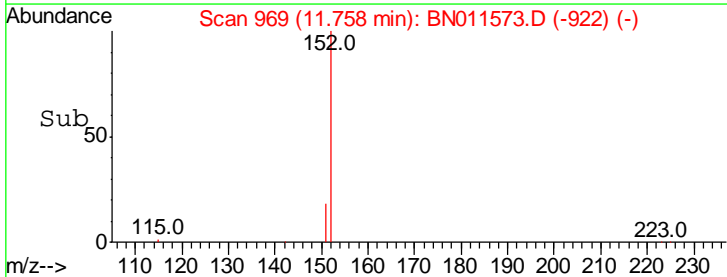
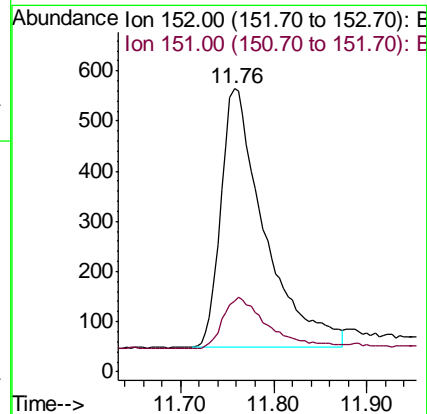
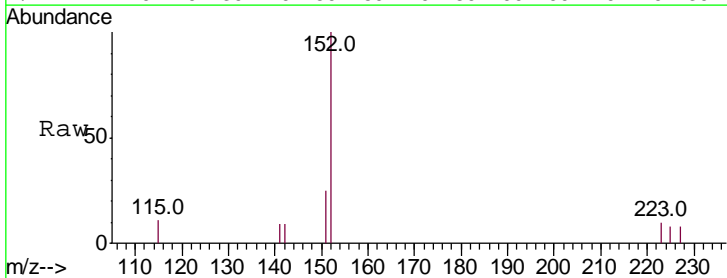
Instrument :
 BNA_N
 ClientSampled :
 CS-14

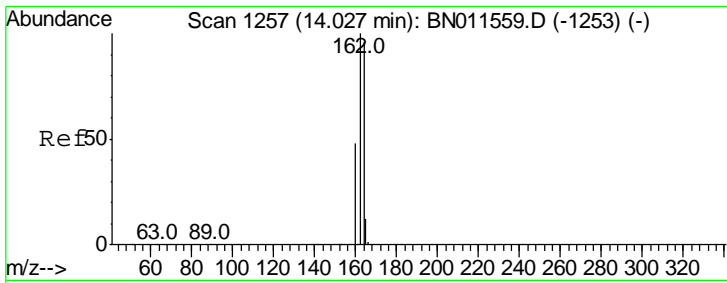
Tgt Ion	Resp	Lower	Upper
82	100		
128	60.0	41.7	62.5
54	48.0	34.4	51.6



#11
 2-Methylnaphthalene-d10
 Concen: 0.200 ng
 RT: 11.76 min Scan# 969
 Delta R.T. 0.01 min
 Lab File: BN011573.D
 Acq: 22 Aug 2020 06:04

Tgt Ion	Resp	Lower	Upper
152	100		
151	19.7	16.6	24.8

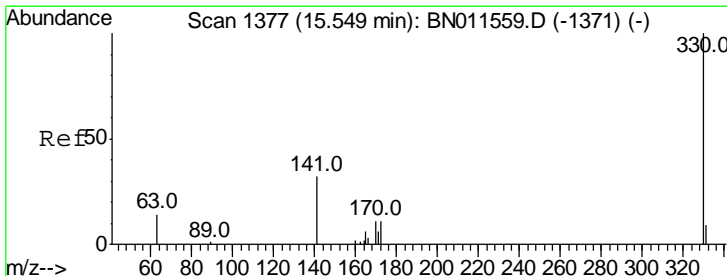
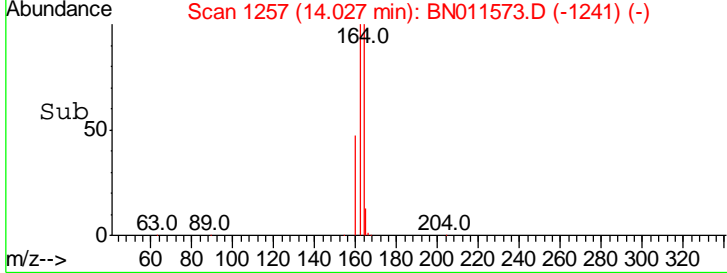
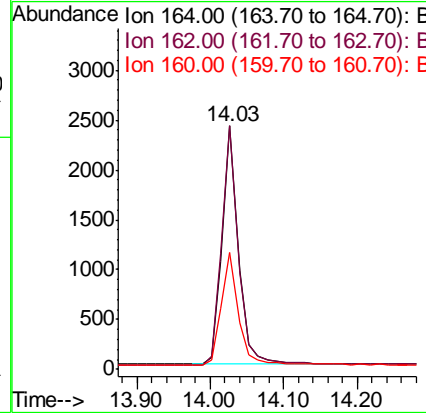
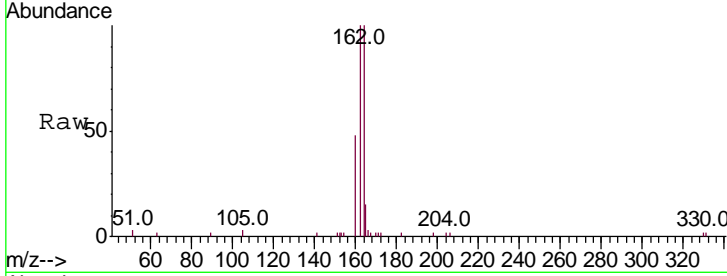




#13
 Acenaphthene-d10
 Concen: 0.400 ng
 RT: 14.03 min Scan# 1257
 Delta R.T. 0.00 min
 Lab File: BN011573.D
 Acq: 22 Aug 2020 06:04

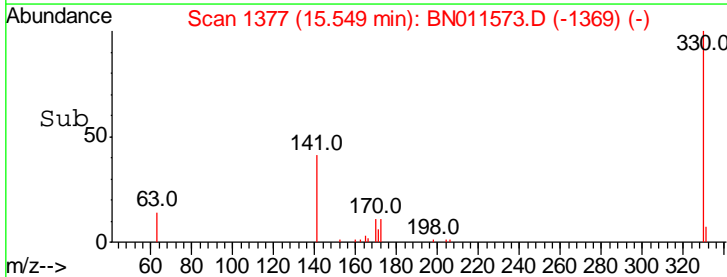
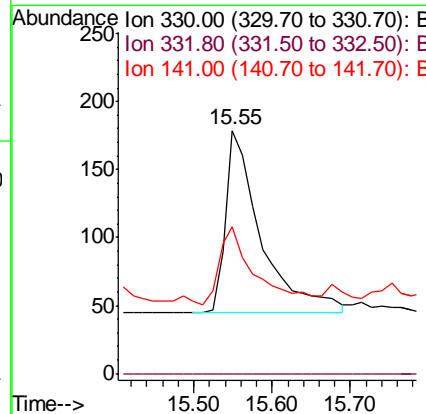
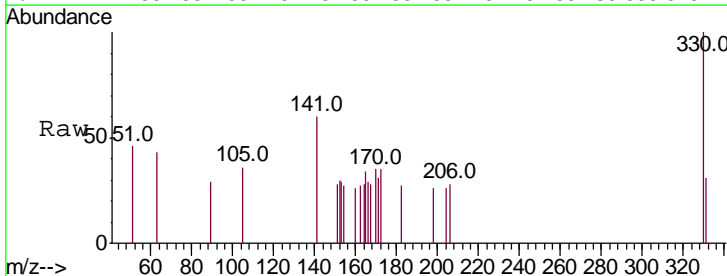
Instrument :
 BNA_N
 ClientSampled :
 CS-14

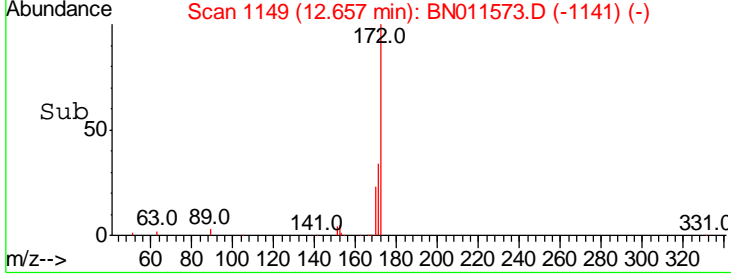
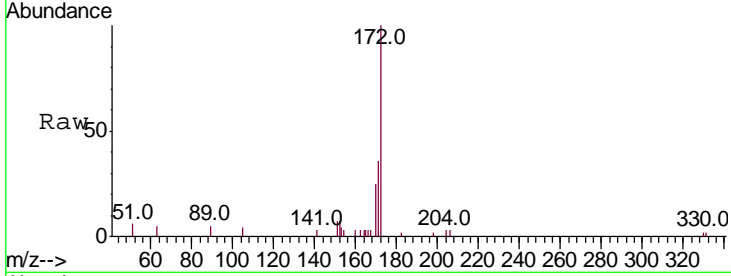
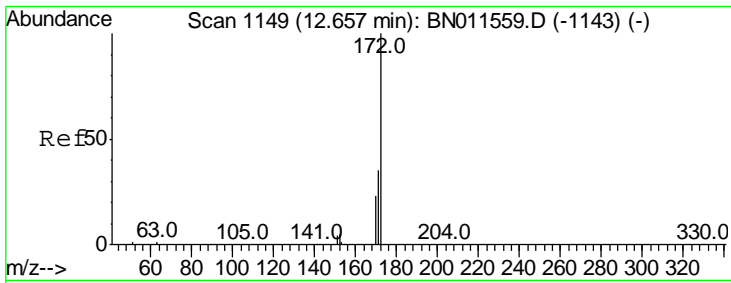
Tgt Ion	Resp	Lower	Upper
164	100		
162	99.8	83.7	125.5
160	48.0	41.1	61.7



#14
 2,4,6-Tribromophenol
 Concen: 0.226 ng
 RT: 15.55 min Scan# 1377
 Delta R.T. 0.00 min
 Lab File: BN011573.D
 Acq: 22 Aug 2020 06:04

Tgt Ion	Resp	Lower	Upper
330	100		
332	0.0	0.0	0.0
141	42.5	34.6	52.0

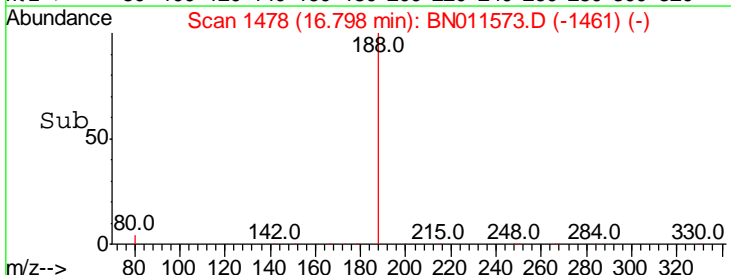
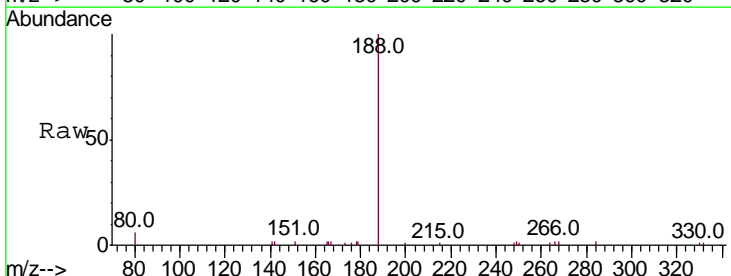
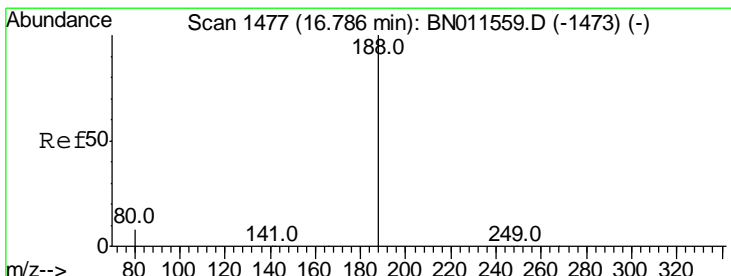
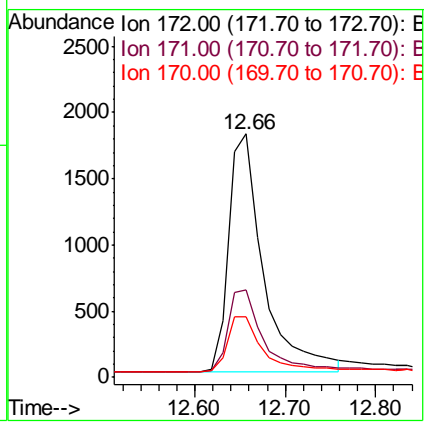




#15
 2-Fluorobiphenyl
 Concen: 0.312 ng
 RT: 12.66 min Scan# 1149
 Delta R.T. 0.00 min
 Lab File: BN011573.D
 Acq: 22 Aug 2020 06:04

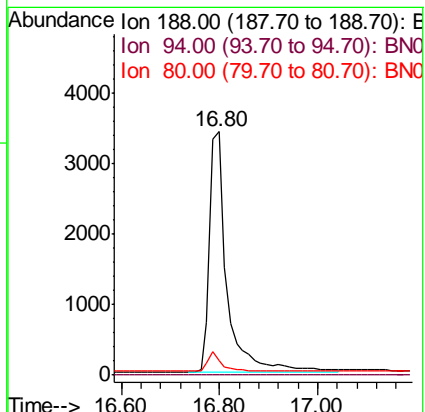
Instrument :
 BNA_N
 ClientSampled :
 CS-14

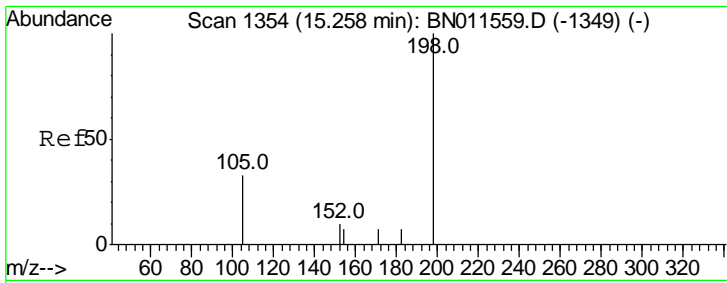
Tgt Ion	Resp	Lower	Upper
172	100		
171	35.8	29.4	44.0
170	24.8	20.1	30.1



#19
 Phenanthrene-d10
 Concen: 0.400 ng
 RT: 16.80 min Scan# 1478
 Delta R.T. 0.01 min
 Lab File: BN011573.D
 Acq: 22 Aug 2020 06:04

Tgt Ion	Resp	Lower	Upper
188	100		
94	0.0	0.0	0.0
80	6.0	7.6	11.4#

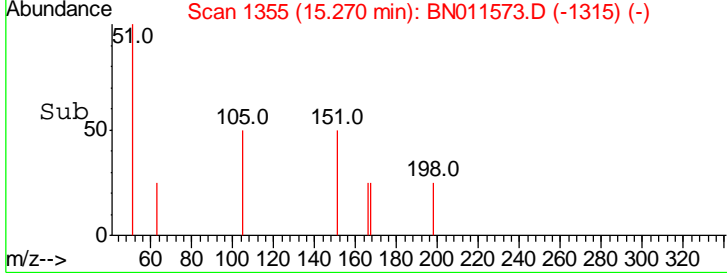
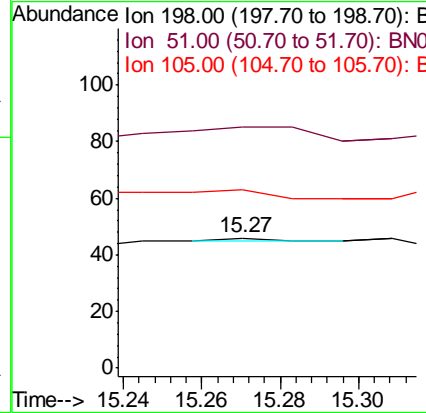
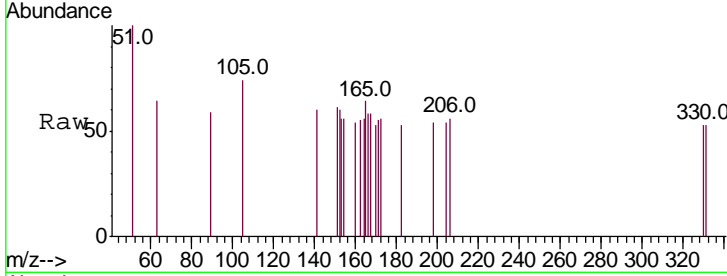




#20
 4,6-Dinitro-2-methylphenol
 Concen: 0.176 ng
 RT: 15.27 min Scan# 1355
 Delta R.T. 0.01 min
 Lab File: BN011573.D
 Acq: 22 Aug 2020 06:04

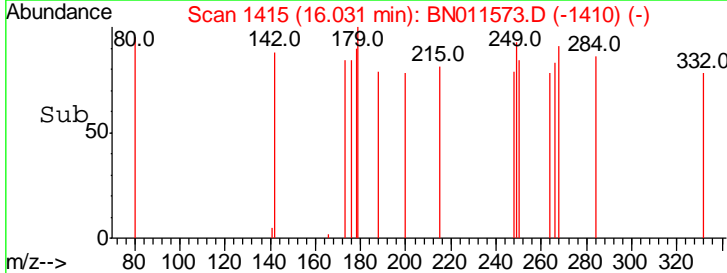
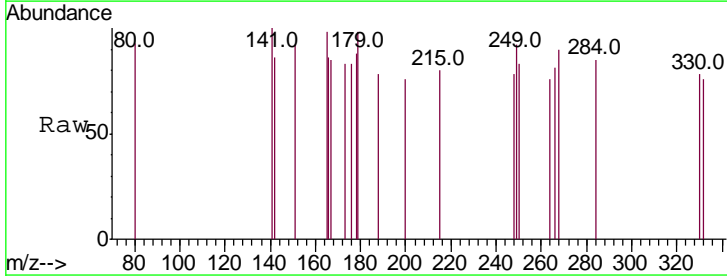
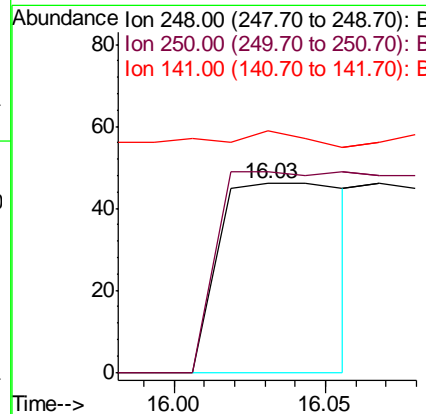
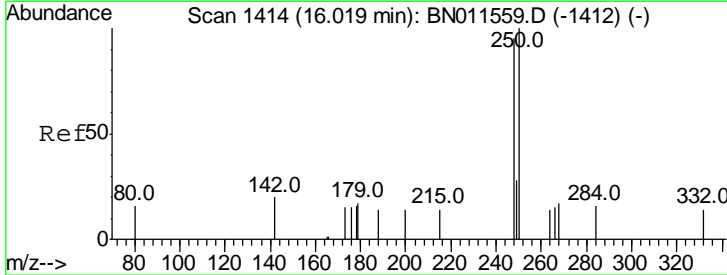
Instrument :
 BNA_N
 ClientSampled :
 CS-14

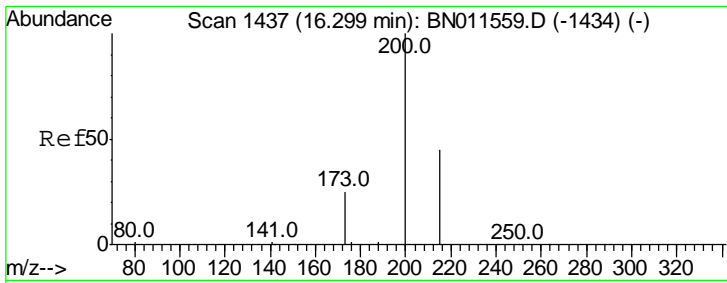
Tgt Ion	Resp	Lower	Upper
198	100		
51	184.8	89.4	134.2#
105	137.0	70.6	105.8#



#21
 4-Bromophenyl-phenylether
 Concen: 0.072 ng
 RT: 16.03 min Scan# 1415
 Delta R.T. 0.01 min
 Lab File: BN011573.D
 Acq: 22 Aug 2020 06:04

Tgt Ion	Resp	Lower	Upper
248	100		
250	106.5	83.8	125.8
141	128.3	41.0	61.6#

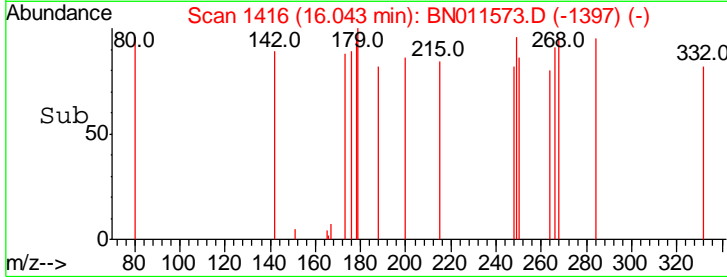
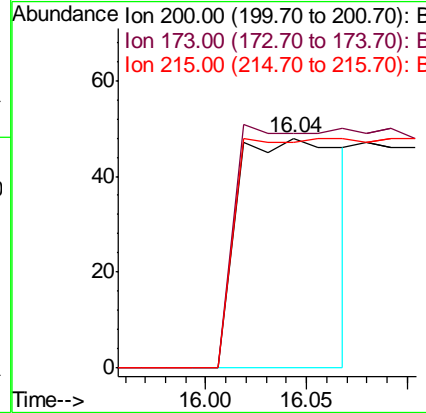
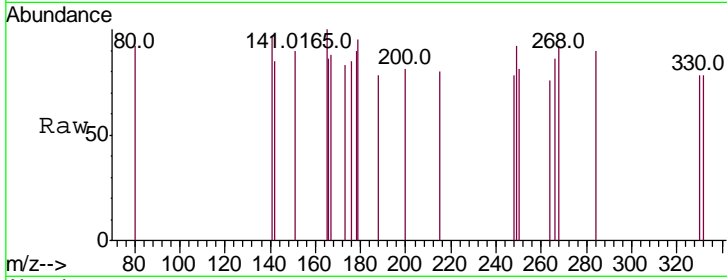




#23
 Atrazine
 Concen: 0.039 ng
 RT: 16.04 min Scan# 1416
 Delta R.T. -0.26 min
 Lab File: BN011573.D
 Acq: 22 Aug 2020 06:04

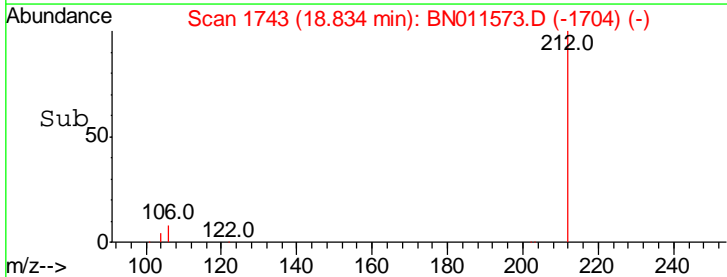
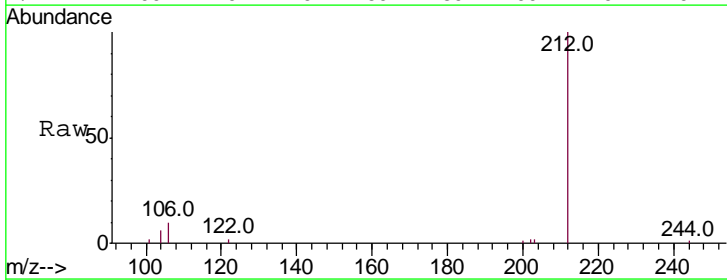
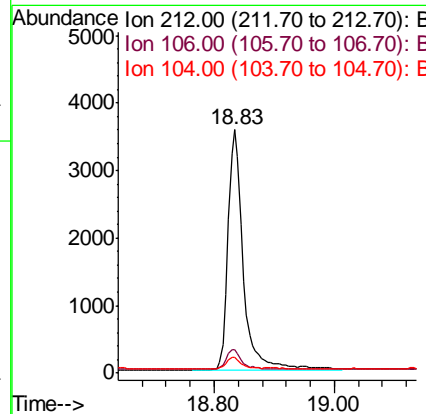
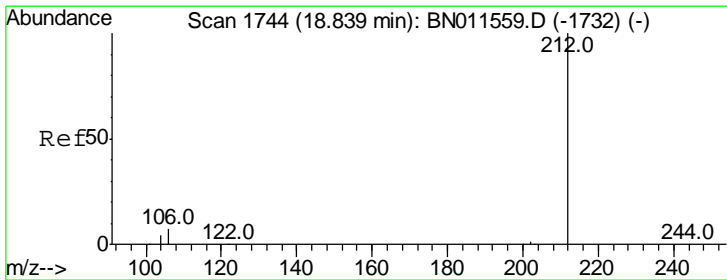
Instrument :
 BNA_N
 ClientSampled :
 CS-14

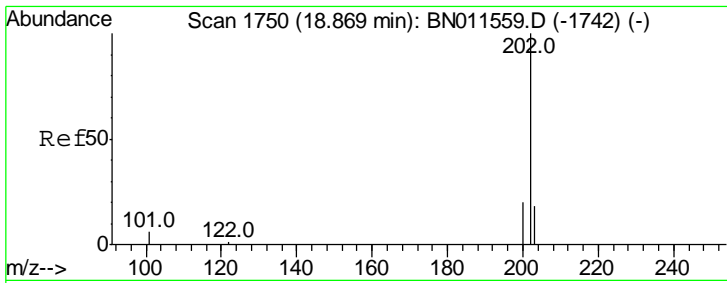
Tgt Ion	Resp	Lower	Upper
200	100		
173	102.1	27.7	41.5#
215	97.9	41.5	62.3#



#27
 Fluoranthene-d10
 Concen: 0.219 ng
 RT: 18.83 min Scan# 1743
 Delta R.T. -0.00 min
 Lab File: BN011573.D
 Acq: 22 Aug 2020 06:04

Tgt Ion	Resp	Lower	Upper
212	100		
106	8.2	6.2	9.2
104	4.7	3.8	5.6

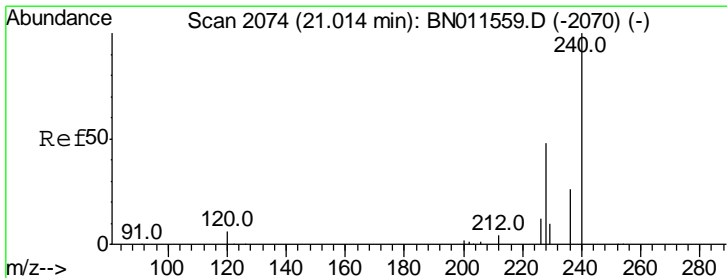
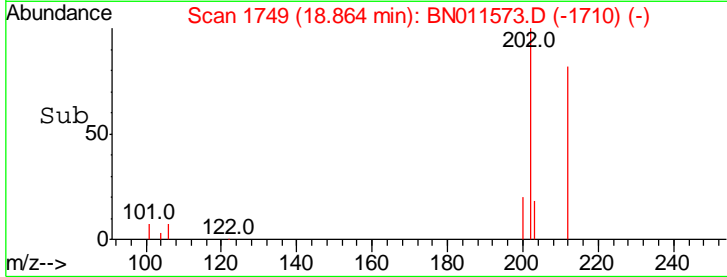
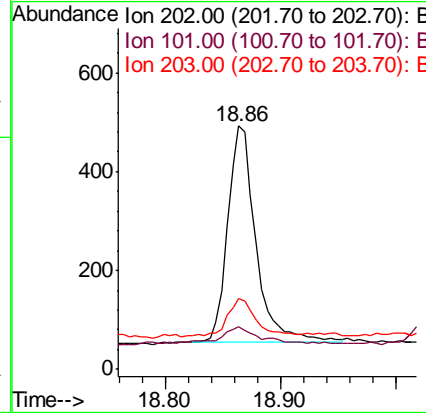
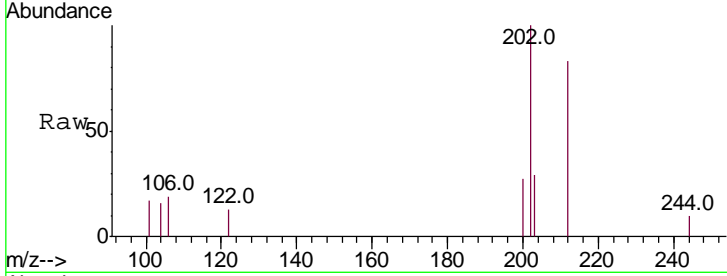




#28
 Fluoranthene
 Concen: 0.022 ng
 RT: 18.86 min Scan# 1749
 Delta R.T. -0.00 min
 Lab File: BN011573.D
 Acq: 22 Aug 2020 06:04

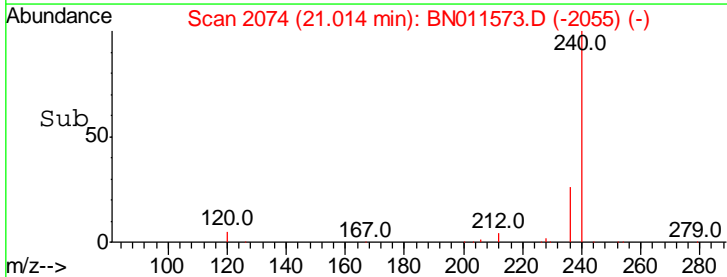
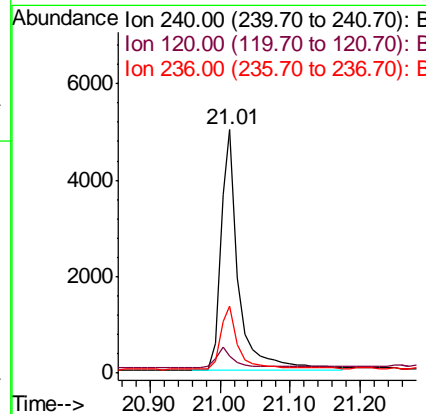
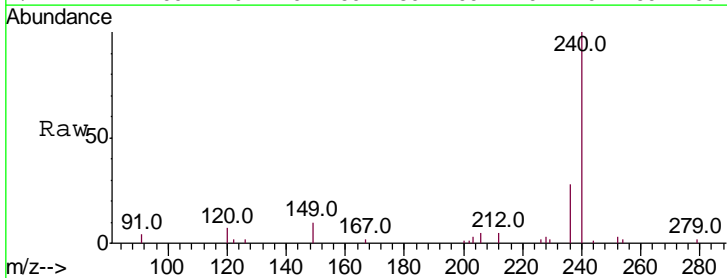
Instrument :
 BNA_N
 ClientSampled :
 CS-14

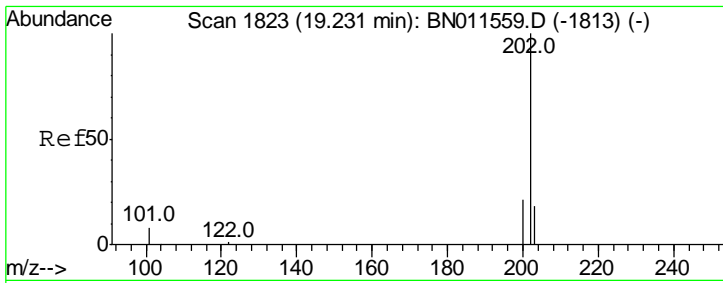
Tgt Ion	Ratio	Lower	Upper
202	100		
101	8.2	5.2	7.8#
203	17.2	13.6	20.4



#29
 Chrysene-d12
 Concen: 0.400 ng
 RT: 21.01 min Scan# 2074
 Delta R.T. 0.00 min
 Lab File: BN011573.D
 Acq: 22 Aug 2020 06:04

Tgt Ion	Ratio	Lower	Upper
240	100		
120	7.0	7.4	11.0#
236	27.8	22.3	33.5

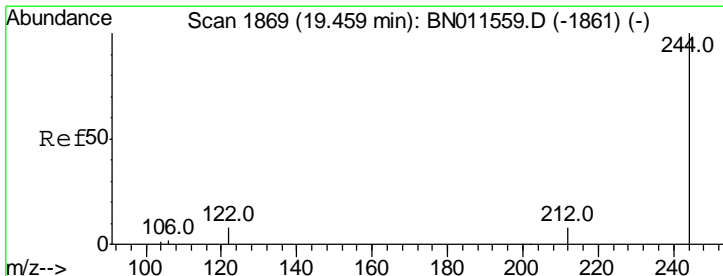
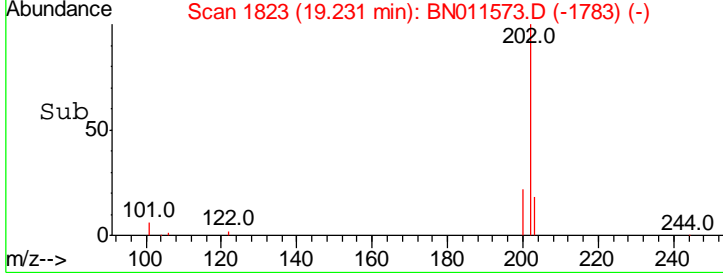
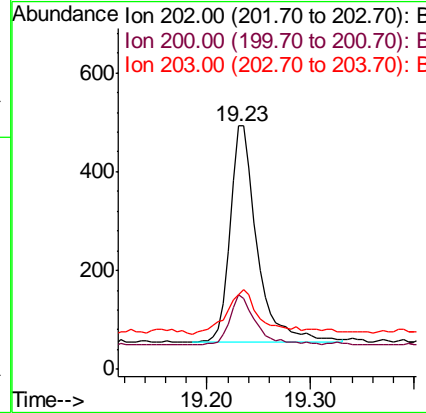
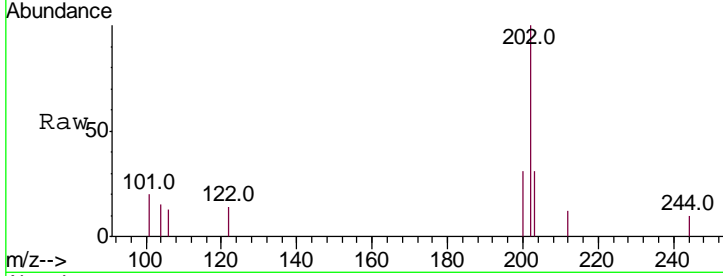




#30
 Pyrene
 Concen: 0.022 ng
 RT: 19.23 min Scan# 1823
 Delta R.T. 0.00 min
 Lab File: BN011573.D
 Acq: 22 Aug 2020 06:04

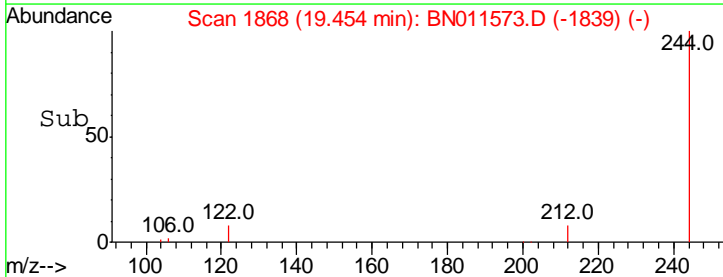
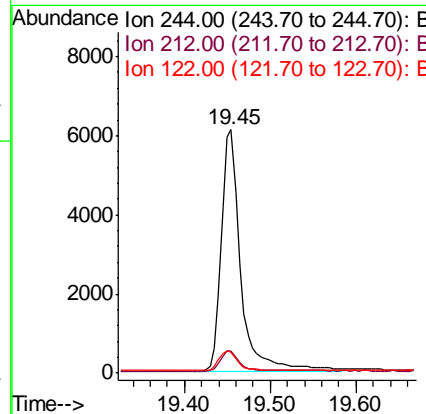
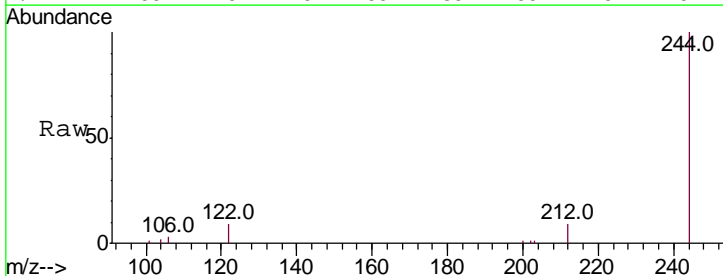
Instrument :
 BNA_N
 ClientSampled :
 CS-14

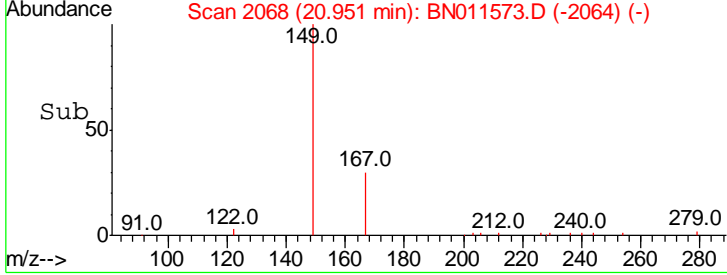
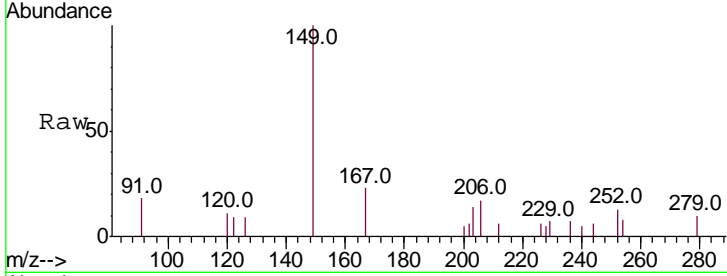
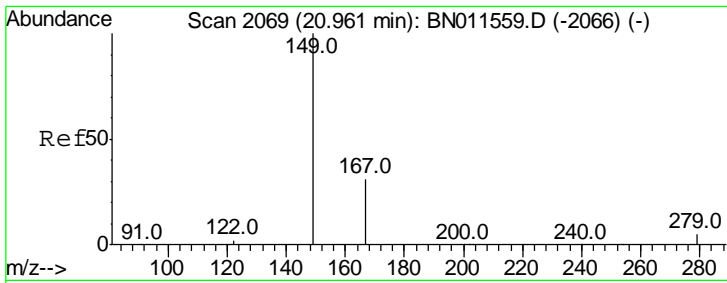
Tgt Ion	Resp	Lower	Upper
202	100		
200	21.5	16.6	25.0
203	25.1	14.2	21.2#



#31
 Terphenyl-d14
 Concen: 0.414 ng
 RT: 19.45 min Scan# 1868
 Delta R.T. -0.00 min
 Lab File: BN011573.D
 Acq: 22 Aug 2020 06:04

Tgt Ion	Resp	Lower	Upper
244	100		
212	9.0	8.2	12.4
122	8.5	8.0	12.0

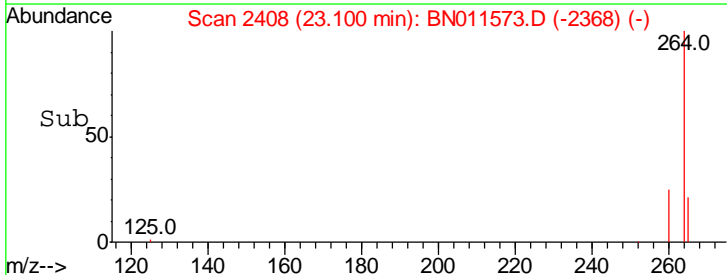
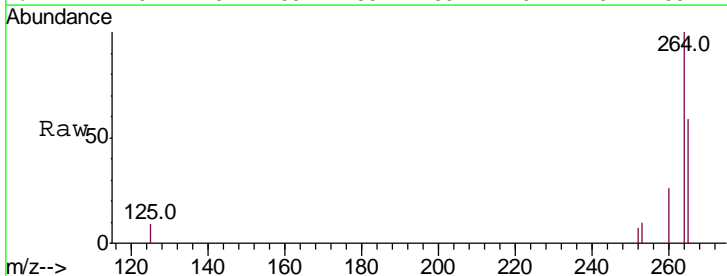
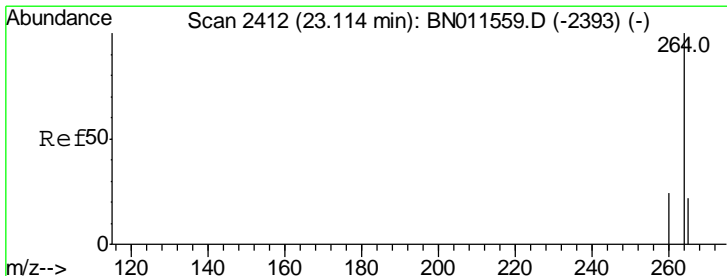
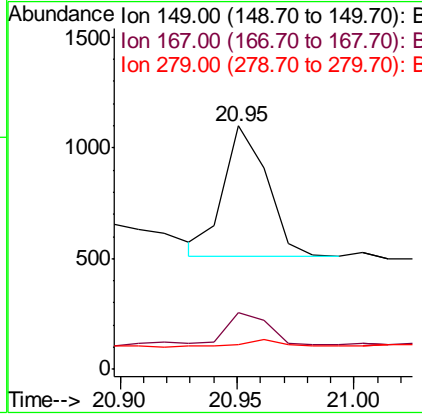




#34
 Bis(2-ethylhexyl)phthalate
 Concen: 0.060 ng
 RT: 20.95 min Scan# 2068
 Delta R.T. -0.01 min
 Lab File: BN011573.D
 Acq: 22 Aug 2020 06:04

Instrument :
 BNA_N
 ClientSampled :
 CS-14

Tgt Ion	Resp	Lower	Upper
149	100		
167	23.2	22.8	34.2
279	4.2	4.2	6.2



#36
 Perylene-d12
 Concen: 0.400 ng
 RT: 23.10 min Scan# 2408
 Delta R.T. -0.01 min
 Lab File: BN011573.D
 Acq: 22 Aug 2020 06:04

Tgt Ion	Resp	Lower	Upper
264	100		
260	25.5	20.3	30.5
265	58.7	96.1	144.1#

