

Data Path : Z:\SVOASRV\HPCHEM1\BNA N\DATA\BN082420\  
 Data File : BN011602.D  
 Acq On : 24 Aug 2020 18:10  
 Operator : CG/JU  
 Sample : SSTDICCC0.4  
 Misc :  
 ALS Vial : 4 Sample Multiplier: 1

Instrument :  
 BNA\_N  
 ClientSampleId :  
 SSTDICCC0.4

Quant Time: Aug 24 18:44:36 2020  
 Quant Method : Z:\SVOASRV\HPCHEM1\BNA N\METHODS\8270-SIM-BN082420.M  
 Quant Title : ASP BNA STANDARDS FOR 5 POINT CALIBRATION  
 QLast Update : Mon Aug 24 18:42:22 2020  
 Response via : Initial Calibration

Internal Standards	R.T.	QIon	Response	Conc	Units	Dev(Min)
1) 1,4-Dichlorobenzene-d4	7.76	152	2084	0.40	ng	0.00
7) Naphthalene-d8	10.54	136	9050	0.40	ng	0.00
13) Acenaphthene-d10	14.39	164	6132	0.40	ng	0.00
19) Phenanthrene-d10	17.14	188	13945	0.40	ng	0.00
29) Chrysene-d12	21.33	240	15478	0.40	ng	0.00
36) Perylene-d12	23.59	264	15241	0.40	ng	0.00

## System Monitoring Compounds

4) 2-Fluorophenol	5.35	112	2707	0.61	ng	0.00
5) Phenol-d6	6.92	99	3971	0.88	ng	0.00
8) Nitrobenzene-d5	8.91	82	3043	0.51	ng	0.00
11) 2-Methylnaphthalene-d10	12.14	152	6292	0.39	ng	0.00
14) 2,4,6-Tribromophenol	15.88	330	1326	0.43	ng	0.00
15) 2-Fluorobiphenyl	13.02	172	9118	0.36	ng	0.00
27) Fluoranthene-d10	19.17	212	16480	0.35	ng	0.00
31) Terphenyl-d14	19.78	244	15229	0.38	ng	0.00

## Target Compounds

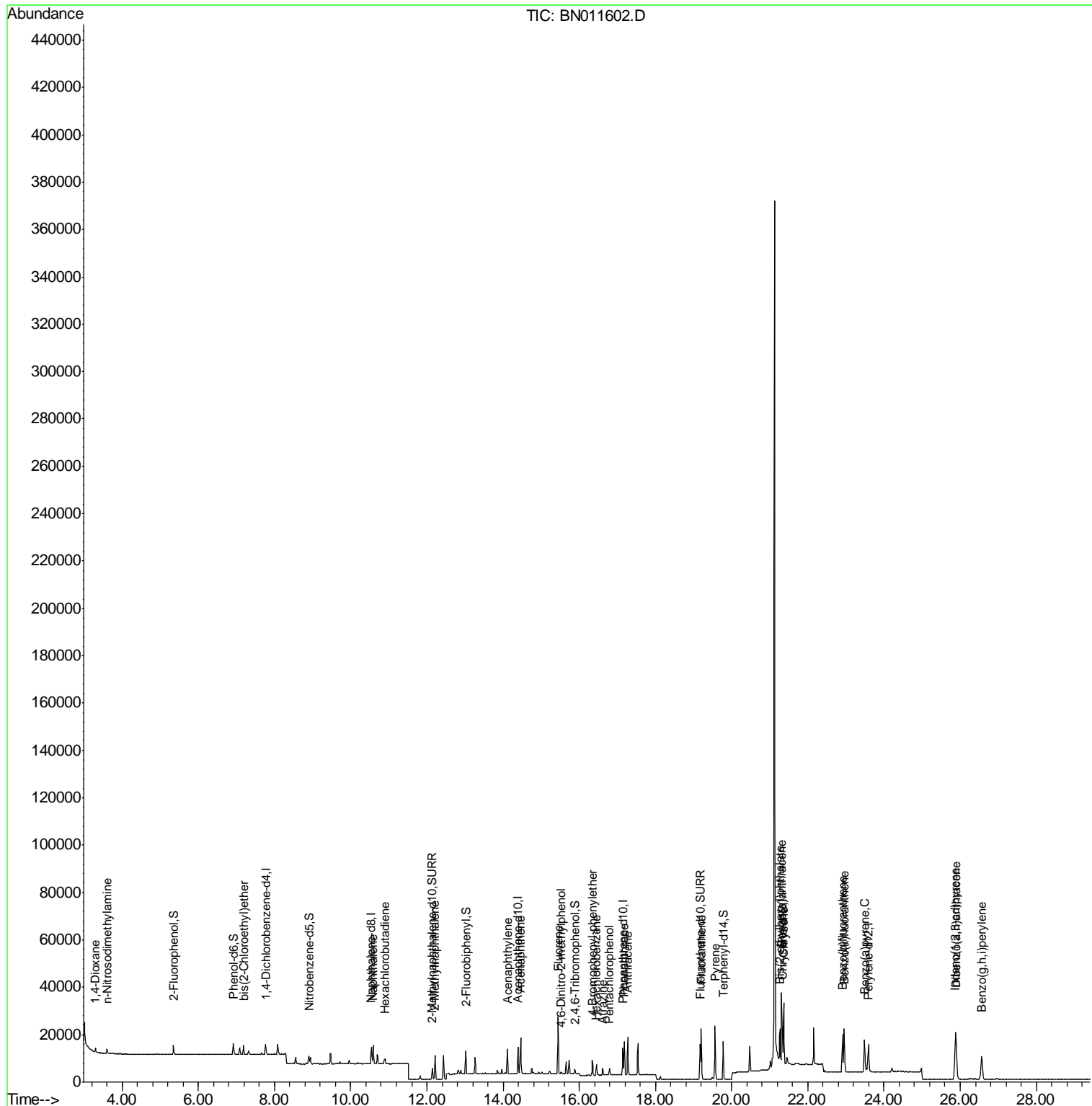
Target Compounds	R.T.	QIon	Response	Conc	Units	Qvalue
2) 1,4-Dioxane	3.30	88	1256	0.441	ng	# 1
3) n-Nitrosodimethylamine	3.60	42	1464	1.247	ng	# 94
6) bis(2-Chloroethyl)ether	7.18	93	2715	0.618	ng	100
9) Naphthalene	10.59	128	9628	0.367	ng	100
10) Hexachlorobutadiene	10.90	225	2017	0.275	ng	# 99
12) 2-Methylnaphthalene	12.21	142	7114	0.394	ng	100
16) Acenaphthylene	14.12	152	11818	0.379	ng	100
17) Acenaphthene	14.46	154	7697	0.376	ng	100
18) Fluorene	15.45	166	9806	0.362	ng	100
20) 4,6-Dinitro-2-methylphenol	15.52	198	535	0.318	ng	100
21) 4-Bromophenyl-phenylether	16.34	248	3000	0.985	ng	100
22) Hexachlorobenzene	16.44	284	3602	0.335	ng	100
23) Atrazine	16.60	200	2276	0.314	ng	100
24) Pentachlorophenol	16.79	266	1582	0.472	ng	97
25) Phenanthrene	17.18	178	16292	0.371	ng	100
26) Anthracene	17.27	178	16131	0.441	ng	100
28) Fluoranthene	19.21	202	19830	0.351	ng	100
30) Pyrene	19.57	202	20579	0.334	ng	100
32) Benzo(a)anthracene	21.31	228	21273	0.418	ng	100
33) Chrysene	21.36	228	19413	0.336	ng	100
34) Bis(2-ethylhexyl)phthalate	21.27	149	14262	0.564	ng	100
35) Indeno(1,2,3-cd)pyrene	25.87	276	24521	0.467	ng	# 100
37) Benzo(b)fluoranthene	22.91	252	20633	0.366	ng	100
38) Benzo(k)fluoranthene	22.96	252	20807	0.310	ng	100
39) Benzo(a)pyrene	23.49	252	19515	0.374	ng	100
40) Dibenzo(a,h)anthracene	25.89	278	20343	0.467	ng	100
41) Benzo(g,h,i)perylene	26.56	276	19903	0.383	ng	100

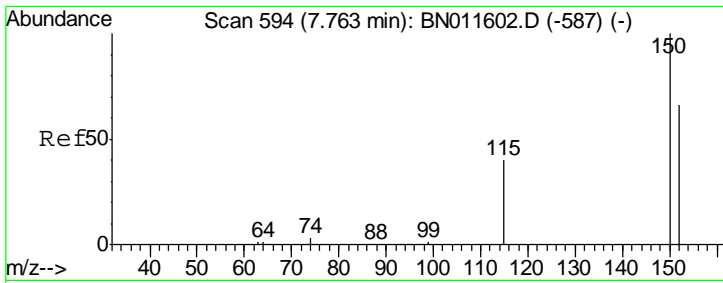
(#) = qualifier out of range (m) = manual integration (+) = signals summed

Data Path : Z:\SVOASRV\HPCHEM1\BNA N\DATA\BN082420\  
 Data File : BN011602.D  
 Acq On : 24 Aug 2020 18:10  
 Operator : CG/JU  
 Sample : SSTDICCC0.4  
 Misc :  
 ALS Vial : 4 Sample Multiplier: 1

Instrument :  
 BNA\_N  
 ClientSampleId :  
 SSTDICCC0.4

Quant Time: Aug 24 18:44:36 2020  
 Quant Method : Z:\SVOASRV\HPCHEM1\BNA N\METHODS\8270-SIM-BN082420.M  
 Quant Title : ASP BNA STANDARDS FOR 5 POINT CALIBRATION  
 QLast Update : Mon Aug 24 18:42:22 2020  
 Response via : Initial Calibration

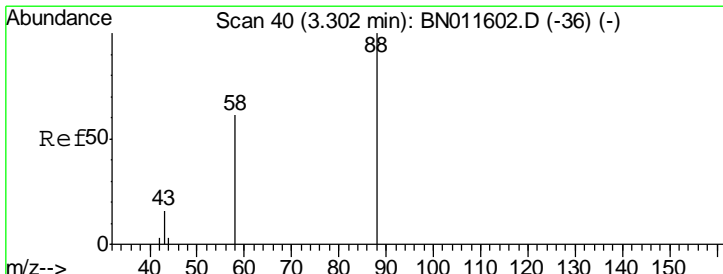
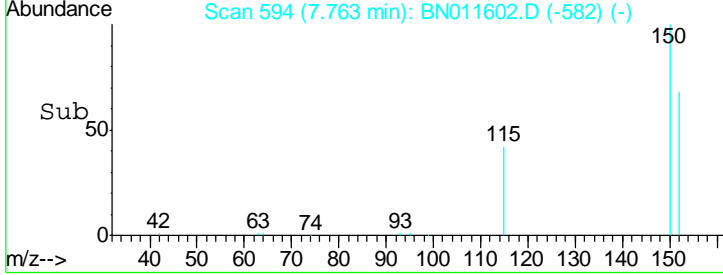
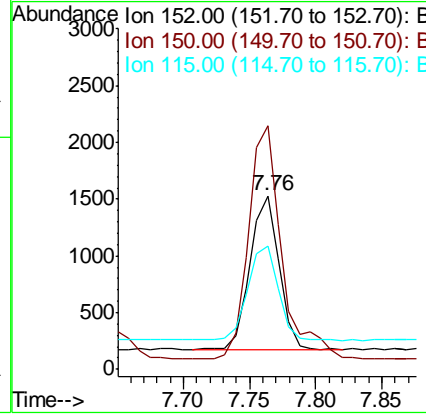
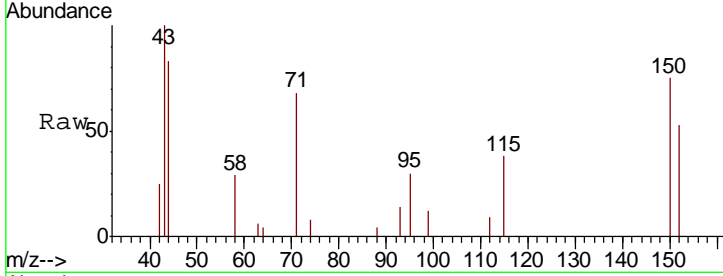




#1  
 1,4-Dichlorobenzene-d4  
 Concen: 0.400 ng  
 RT: 7.76 min Scan# 594  
 Delta R.T. 0.00 min  
 Lab File: BN011602.D  
 Acq: 24 Aug 2020 18:10

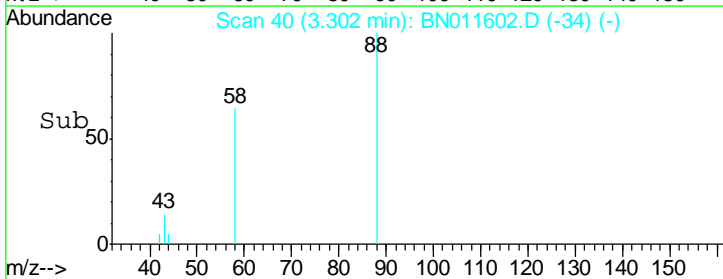
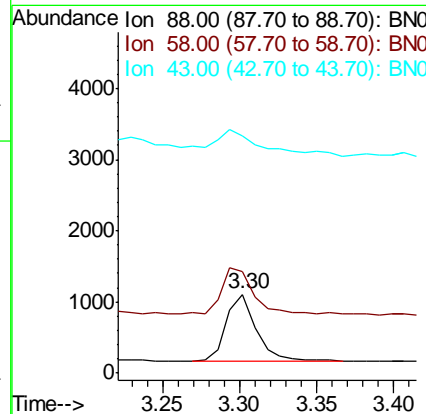
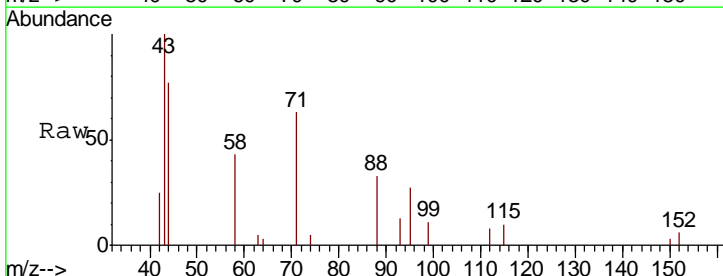
**Instrument :**  
 BNA\_N  
**ClientSampled :**  
 SSTDICC0.4

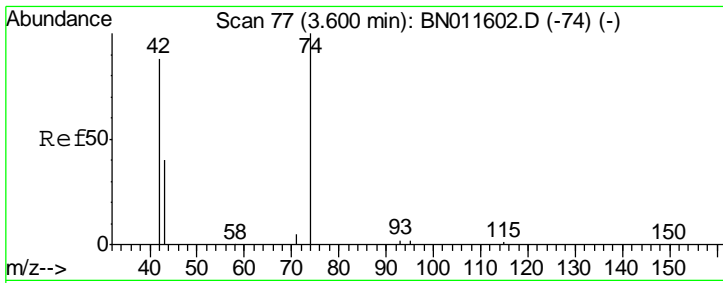
Tgt Ion	Resp	Lower	Upper
152	100		
150	140.5	112.4	168.6
115	71.1	56.9	85.3



#2  
 1,4-Dioxane  
 Concen: 0.441 ng  
 RT: 3.30 min Scan# 40  
 Delta R.T. 0.00 min  
 Lab File: BN011602.D  
 Acq: 24 Aug 2020 18:10

Tgt Ion	Resp	Lower	Upper
88	100		
58	73.3	3.0	4.4#
43	55.7	0.0	0.0#

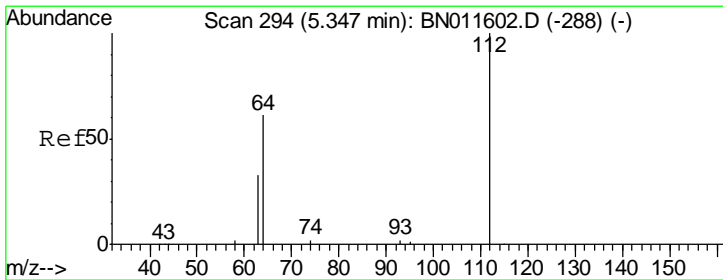
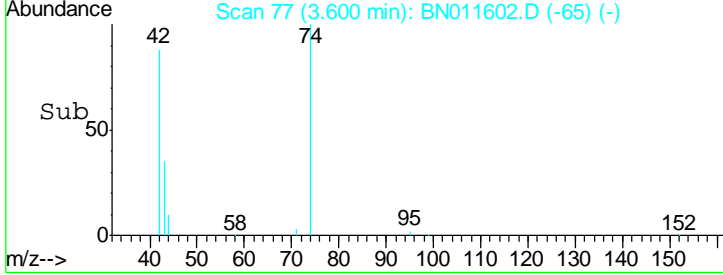
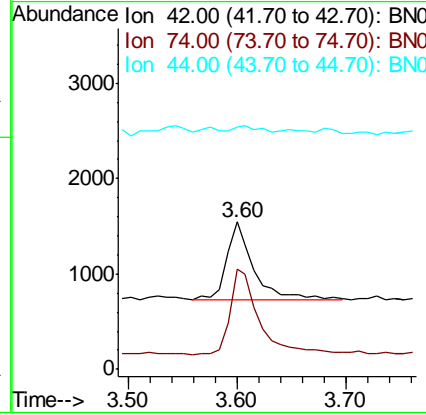
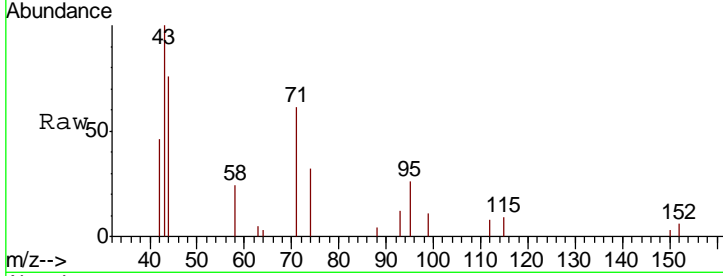




#3  
 n-Nitrosodimethylamine  
 Concen: 1.247 ng  
 RT: 3.60 min Scan# 77  
 Delta R.T. 0.00 min  
 Lab File: BN011602.D  
 Acq: 24 Aug 2020 18:10

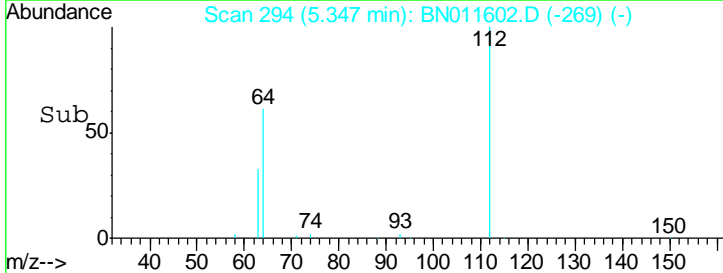
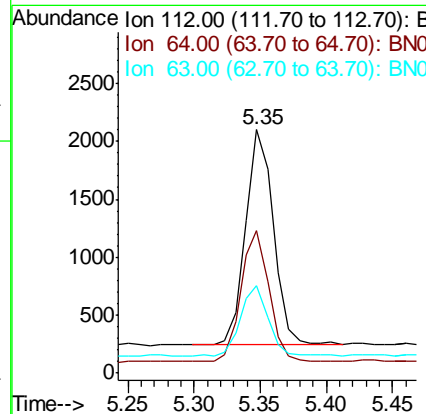
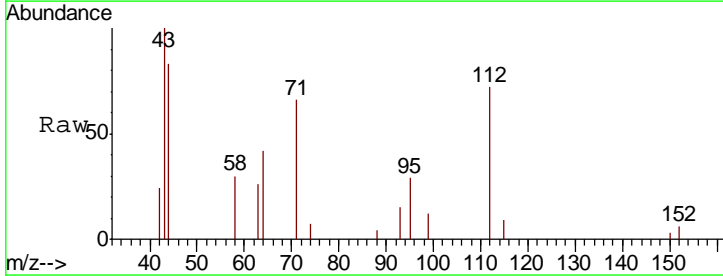
Instrument :  
 BNA\_N  
 ClientSampleId :  
 SSTDICC0.4

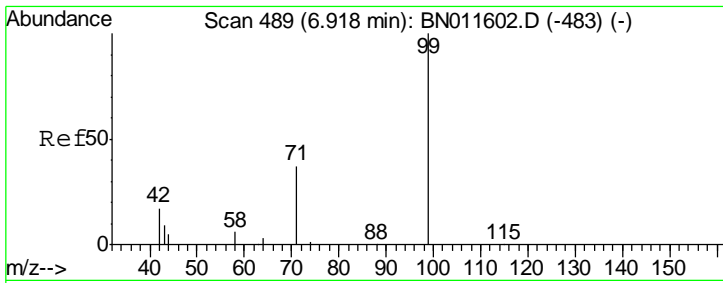
Tgt Ion	Resp	Lower	Upper
42	1464		
74	112.6	0.0	0.0#
44	8.1	8.2	12.4#



#4  
 2-Fluorophenol  
 Concen: 0.609 ng  
 RT: 5.35 min Scan# 294  
 Delta R.T. 0.00 min  
 Lab File: BN011602.D  
 Acq: 24 Aug 2020 18:10

Tgt Ion	Resp	Lower	Upper
112	2707		
64	62.0	49.6	74.4
63	33.0	26.4	39.6

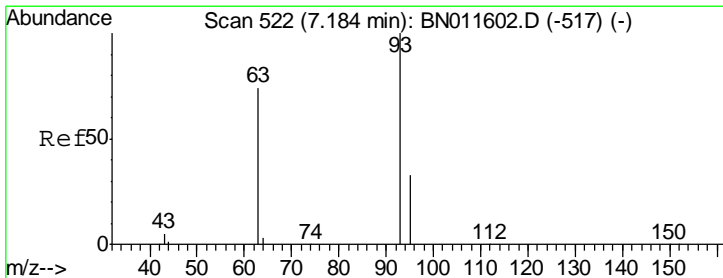
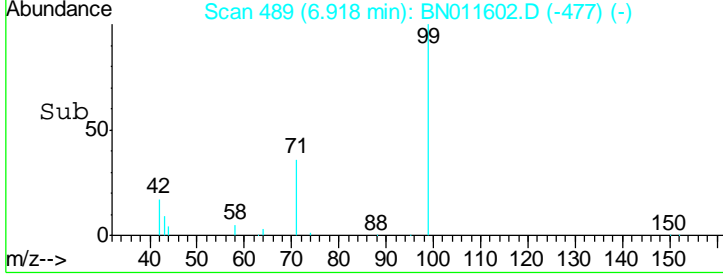
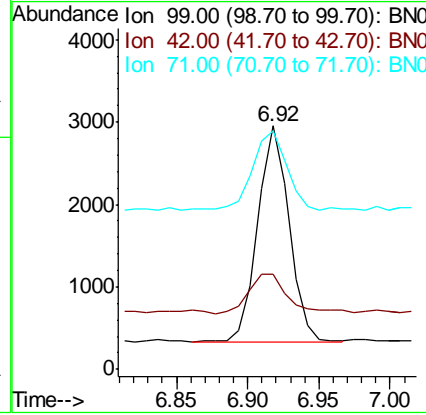
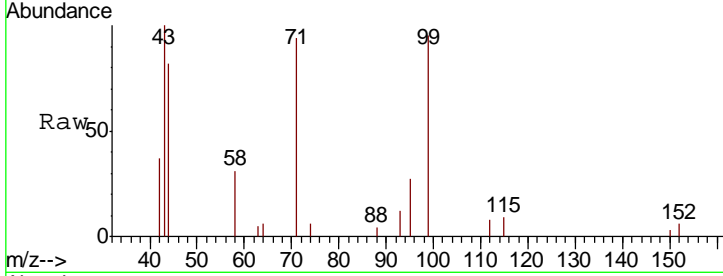




#5  
 Phenol-d6  
 Concen: 0.884 ng  
 RT: 6.92 min Scan# 489  
 Delta R.T. 0.00 min  
 Lab File: BN011602.D  
 Acq: 24 Aug 2020 18:10

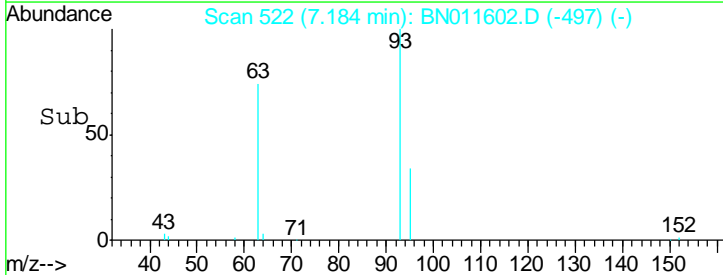
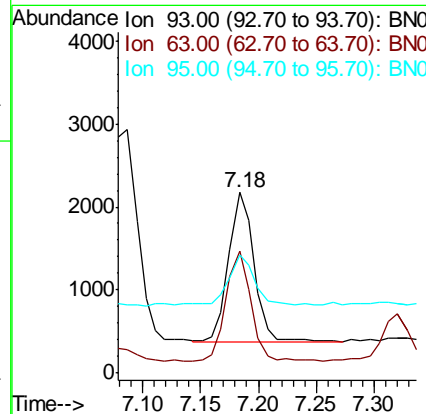
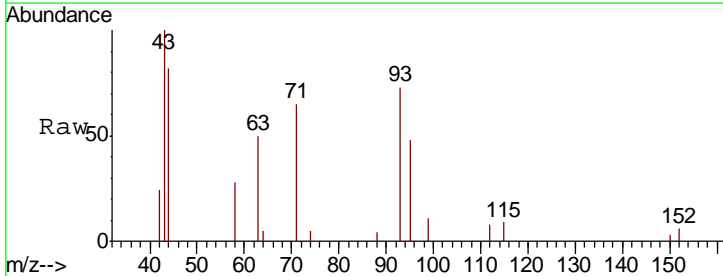
Instrument :  
 BNA\_N  
 ClientSampled :  
 SSTDICC0.4

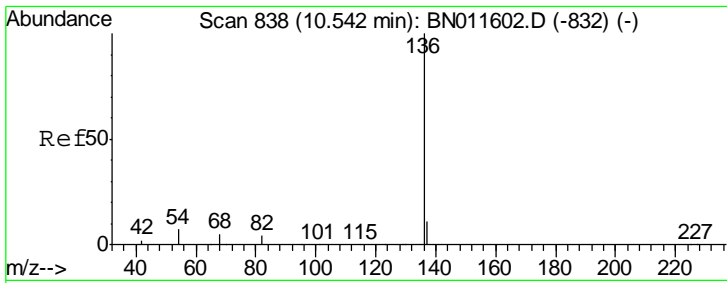
Tgt Ion	Resp	Lower	Upper
99	3971		
42	23.0	0.0	0.0#
71	40.7	0.0	0.0#



#6  
 bis(2-Chloroethyl)ether  
 Concen: 0.618 ng  
 RT: 7.18 min Scan# 522  
 Delta R.T. 0.00 min  
 Lab File: BN011602.D  
 Acq: 24 Aug 2020 18:10

Tgt Ion	Resp	Lower	Upper
93	2715		
63	72.4	57.8	86.8
95	35.5	28.3	42.5

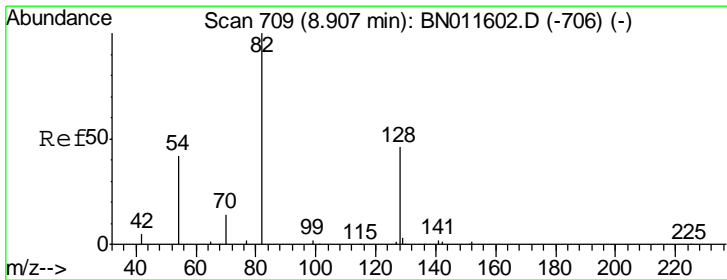
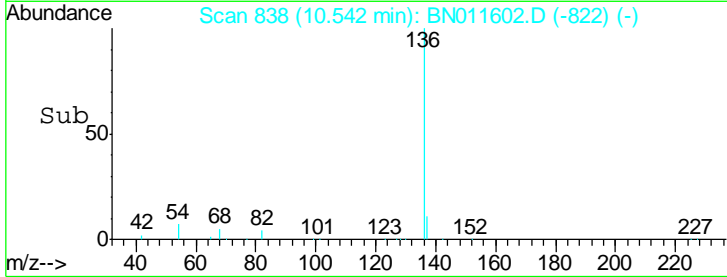
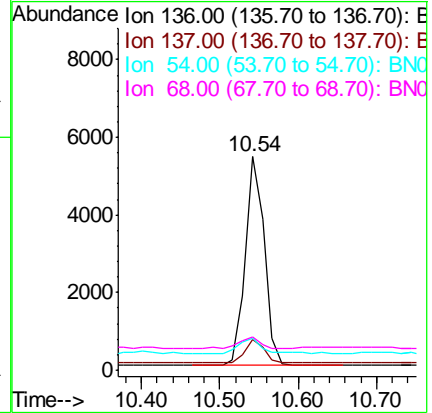
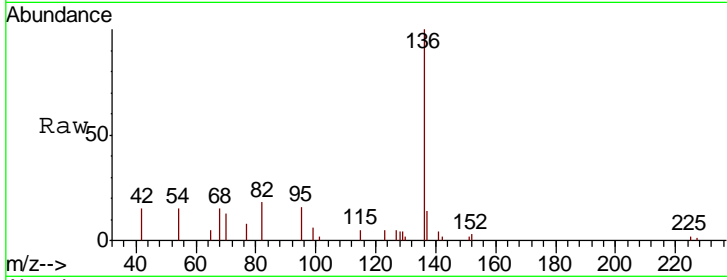




#7  
 Naphthalene-d8  
 Concen: 0.400 ng  
 RT: 10.54 min Scan# 838  
 Delta R.T. 0.00 min  
 Lab File: BN011602.D  
 Acq: 24 Aug 2020 18:10

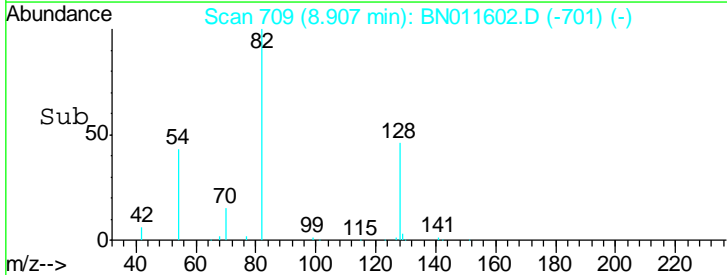
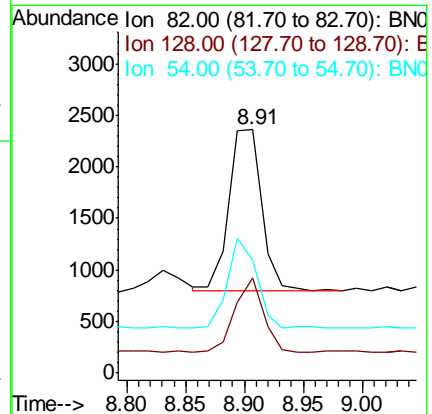
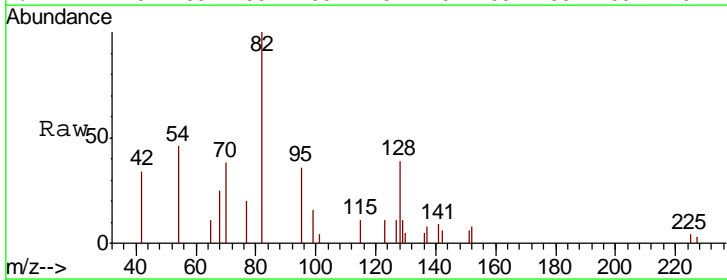
**Instrument :**  
 BNA\_N  
**ClientSampled :**  
 SSTD1CCC0.4

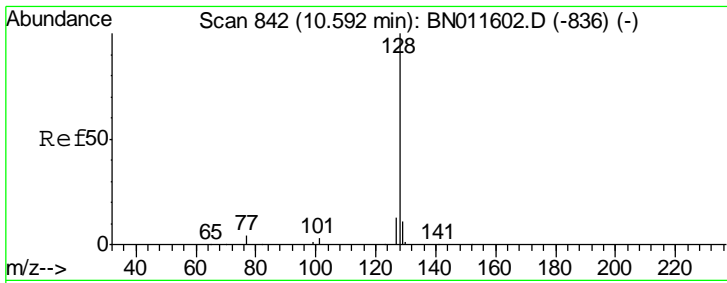
Tgt Ion	Resp	Lower	Upper
136	100		
137	14.4	11.5	17.3
54	14.9	11.9	17.9
68	15.4	12.3	18.5



#8  
 Nitrobenzene-d5  
 Concen: 0.512 ng  
 RT: 8.91 min Scan# 709  
 Delta R.T. 0.00 min  
 Lab File: BN011602.D  
 Acq: 24 Aug 2020 18:10

Tgt Ion	Resp	Lower	Upper
82	100		
128	38.9	31.1	46.7
54	46.4	37.1	55.7

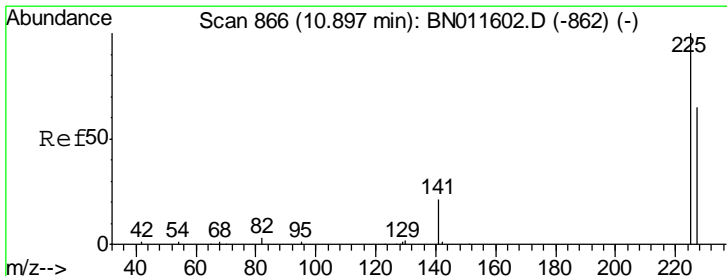
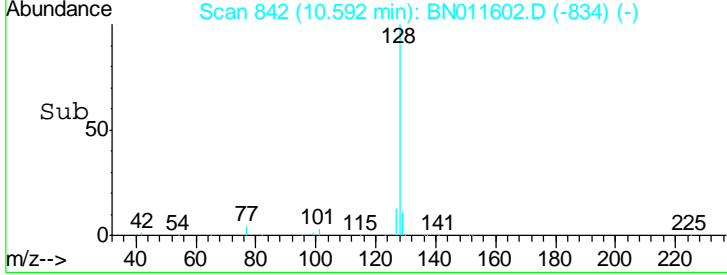
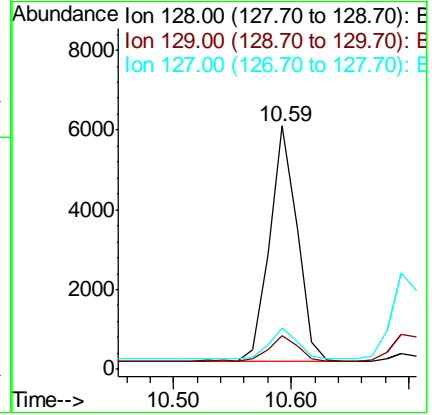
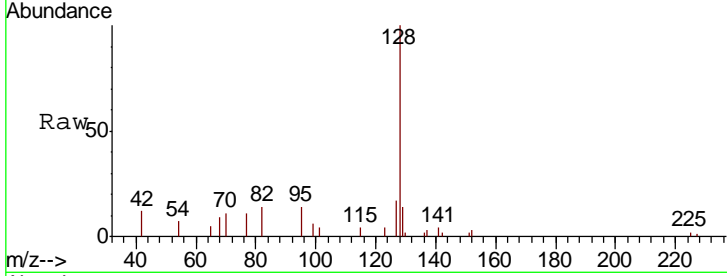




#9  
 Naphthalene  
 Concen: 0.367 ng  
 RT: 10.59 min Scan# 842  
 Delta R.T. 0.00 min  
 Lab File: BN011602.D  
 Acq: 24 Aug 2020 18:10

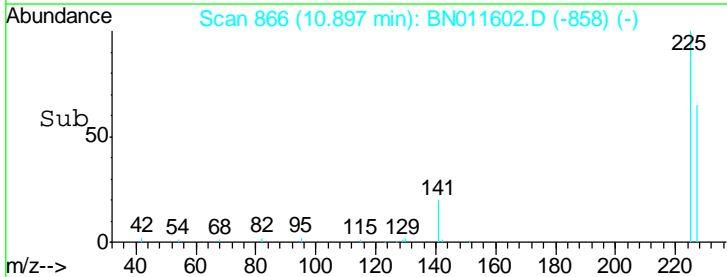
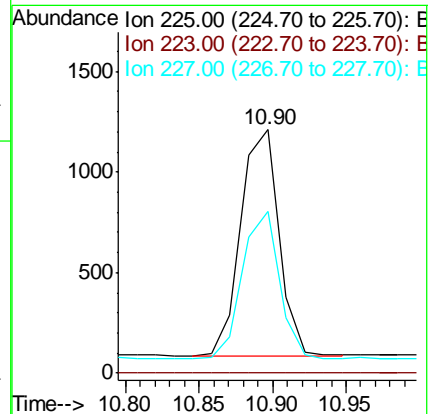
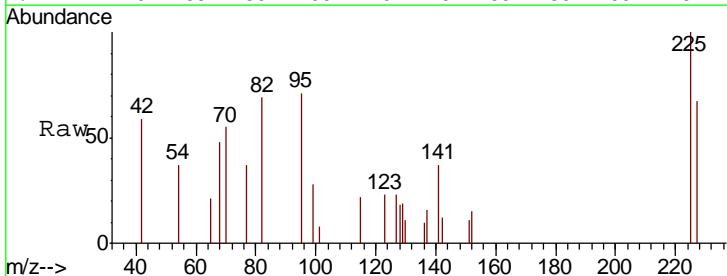
**Instrument :**  
 BNA\_N  
**ClientSampled :**  
 SSTDICC0.4

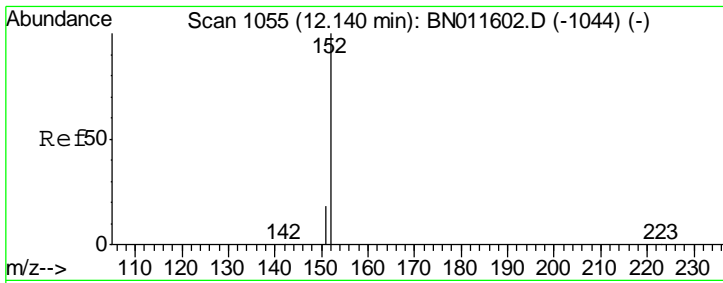
Tgt Ion	Resp	Lower	Upper
128	9628		
129	13.7	11.0	16.4
127	16.9	13.5	20.3



#10  
 Hexachlorobutadiene  
 Concen: 0.275 ng  
 RT: 10.90 min Scan# 866  
 Delta R.T. 0.00 min  
 Lab File: BN011602.D  
 Acq: 24 Aug 2020 18:10

Tgt Ion	Resp	Lower	Upper
225	2017		
223	0.0	0.0	0.0
227	63.4	50.2	75.2

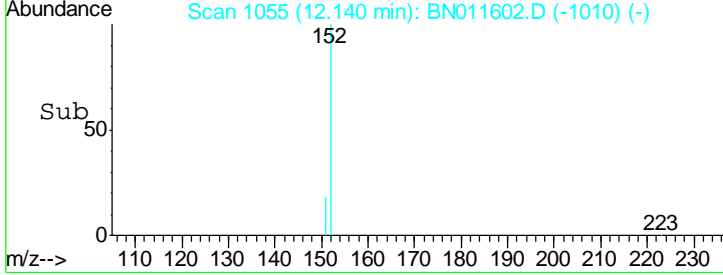
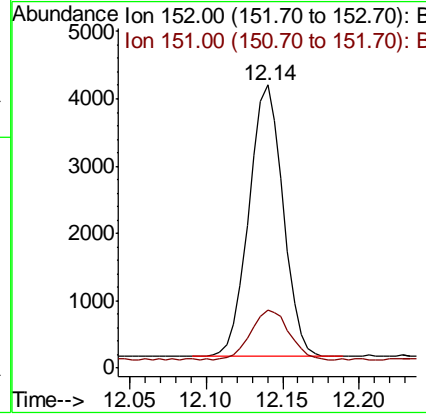
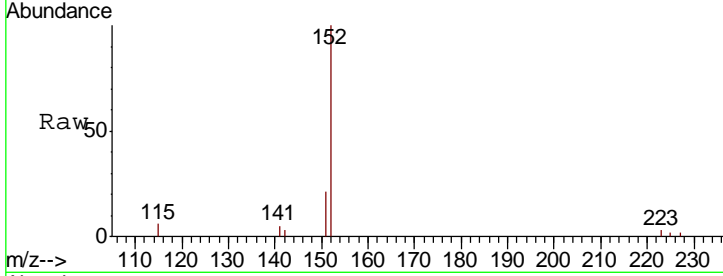




#11  
 2-Methylnaphthalene-d10  
 Concen: 0.389 ng  
 RT: 12.14 min Scan# 1055  
 Delta R.T. 0.00 min  
 Lab File: BN011602.D  
 Acq: 24 Aug 2020 18:10

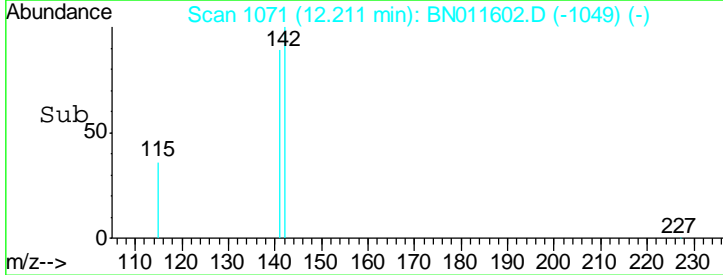
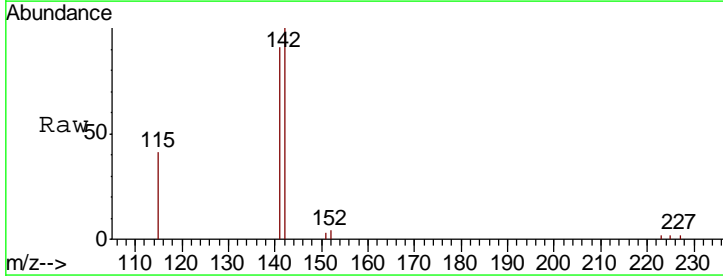
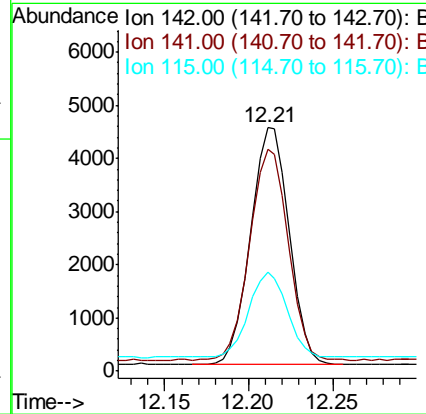
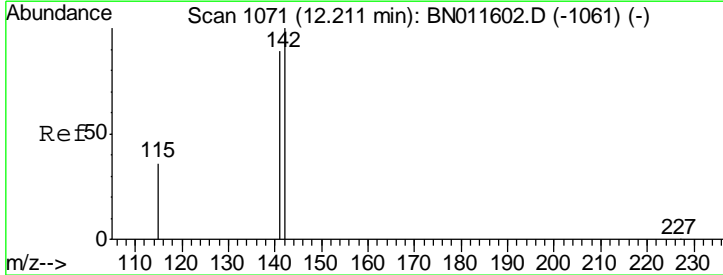
**Instrument :**  
 BNA\_N  
**ClientSampleId :**  
 SSTDICC0.4

Tgt Ion	Resp	Lower	Upper
152	100		
151	20.5	16.4	24.6

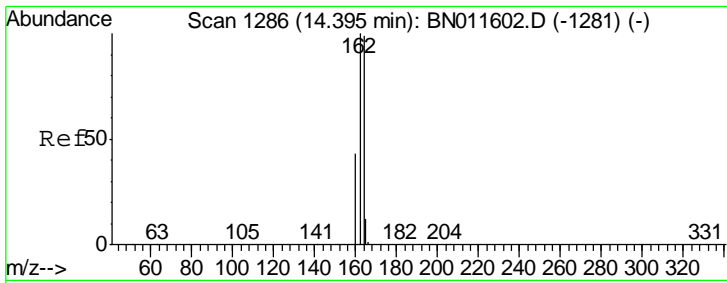


#12  
 2-Methylnaphthalene  
 Concen: 0.394 ng  
 RT: 12.21 min Scan# 1071  
 Delta R.T. 0.00 min  
 Lab File: BN011602.D  
 Acq: 24 Aug 2020 18:10

Tgt Ion	Resp	Lower	Upper
142	100		
141	90.9	72.7	109.1
115	40.9	32.7	49.1



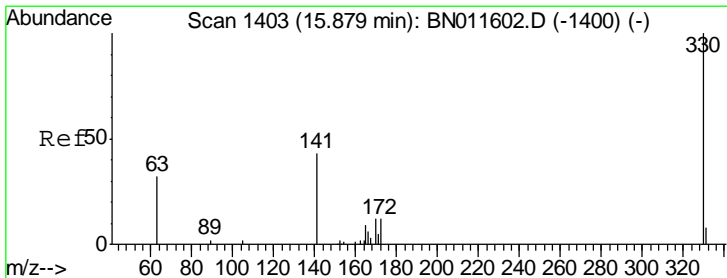
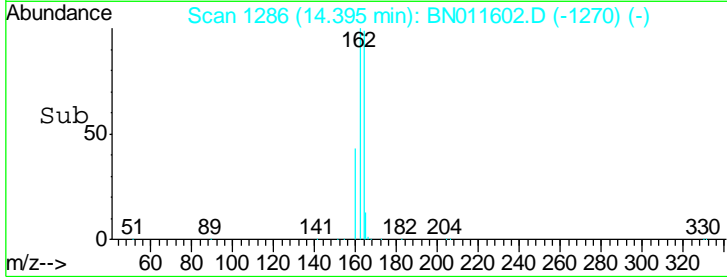
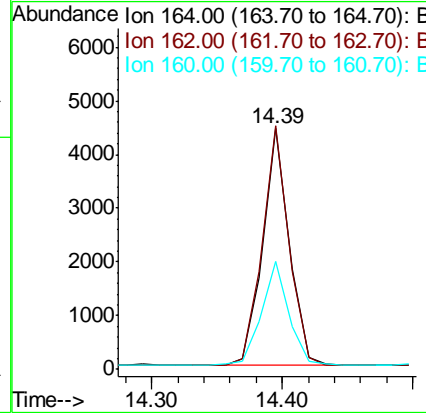
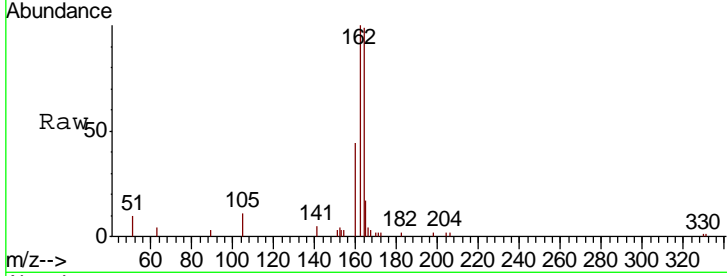




#13  
 Acenaphthene-d10  
 Concen: 0.400 ng  
 RT: 14.39 min Scan# 1286  
 Delta R.T. 0.00 min  
 Lab File: BN011602.D  
 Acq: 24 Aug 2020 18:10

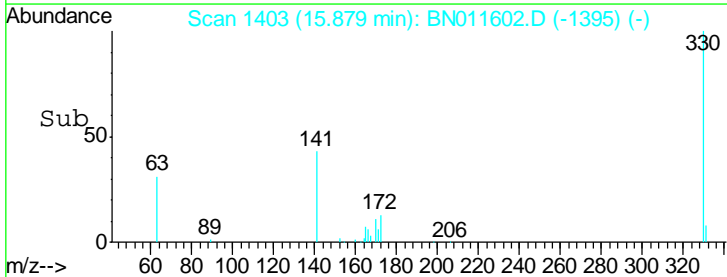
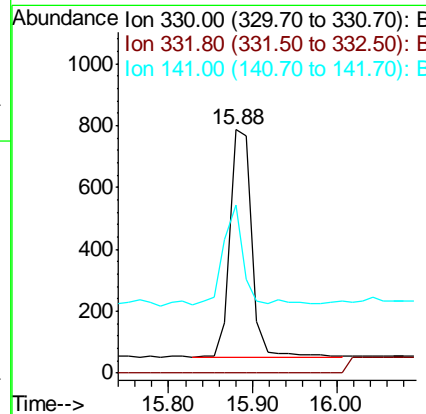
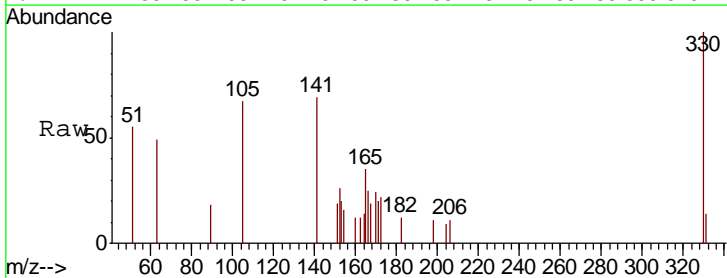
Instrument :  
 BNA\_N  
 ClientSampleId :  
 SSTDICC0.4

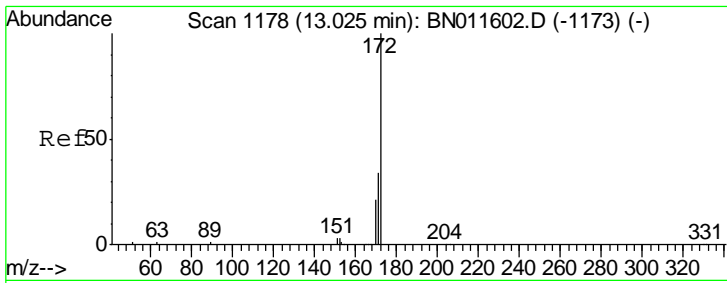
Tgt Ion	Resp	Lower	Upper
164	100		
162	101.0	80.8	121.2
160	44.5	35.6	53.4



#14  
 2,4,6-Tribromophenol  
 Concen: 0.434 ng  
 RT: 15.88 min Scan# 1403  
 Delta R.T. 0.00 min  
 Lab File: BN011602.D  
 Acq: 24 Aug 2020 18:10

Tgt Ion	Resp	Lower	Upper
330	100		
332	0.0	0.0	0.0
141	37.1	29.4	44.2

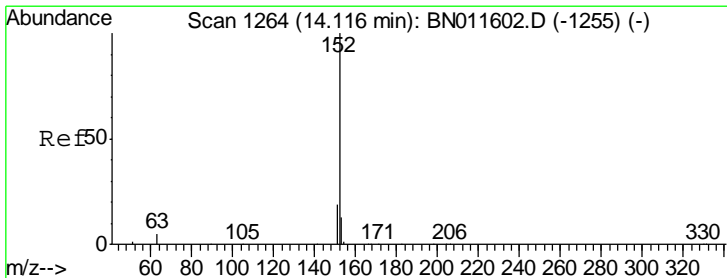
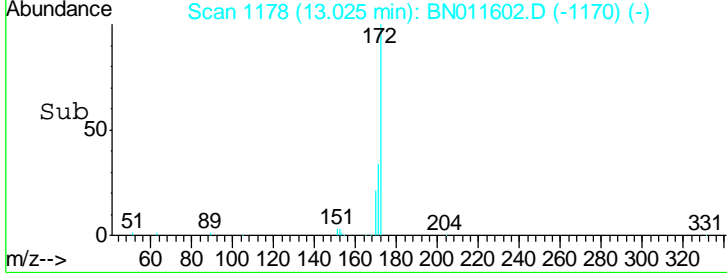
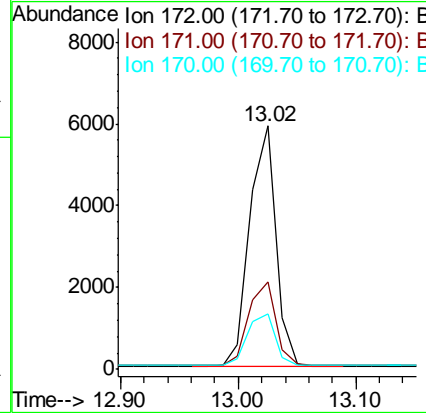
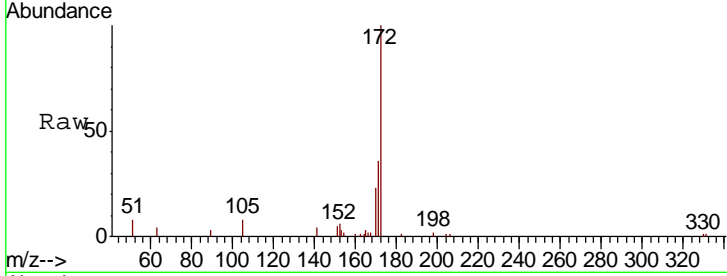




#15  
 2-Fluorobiphenyl  
 Concen: 0.362 ng  
 RT: 13.02 min Scan# 1178  
 Delta R.T. 0.00 min  
 Lab File: BN011602.D  
 Acq: 24 Aug 2020 18:10

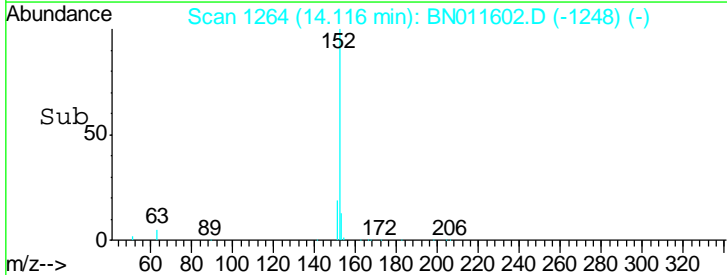
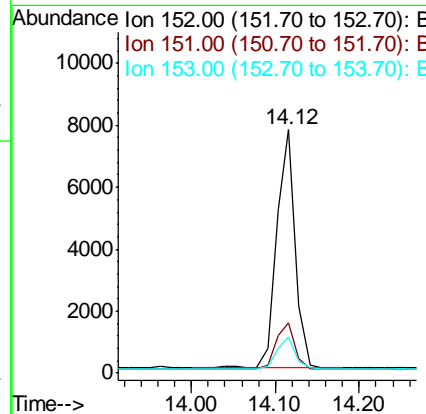
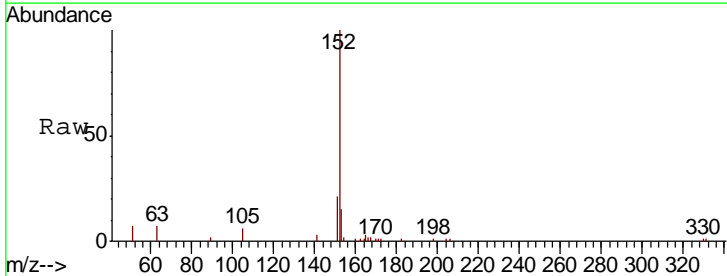
Instrument :  
 BNA\_N  
 ClientSampleId :  
 SSTDICC0.4

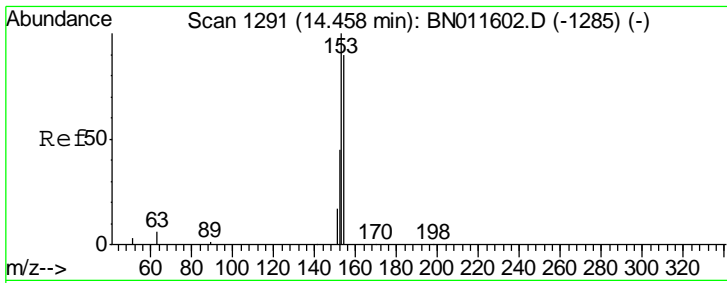
Tgt Ion	Resp	Lower	Upper
172	100		
171	35.7	28.6	42.8
170	22.7	18.2	27.2



#16  
 Acenaphthylene  
 Concen: 0.379 ng  
 RT: 14.12 min Scan# 1264  
 Delta R.T. 0.00 min  
 Lab File: BN011602.D  
 Acq: 24 Aug 2020 18:10

Tgt Ion	Resp	Lower	Upper
152	100		
151	20.2	16.2	24.2
153	13.7	11.0	16.4

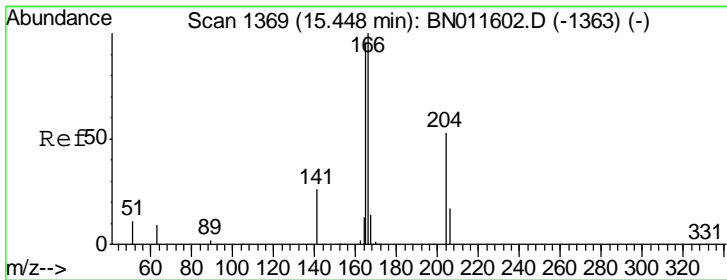
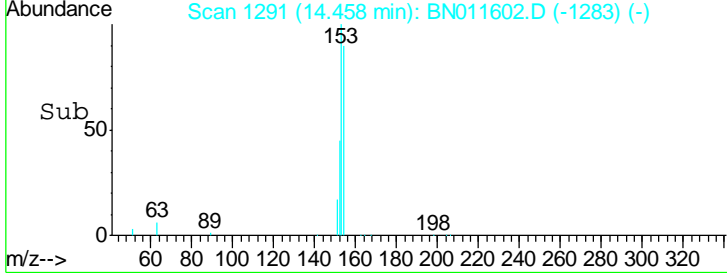
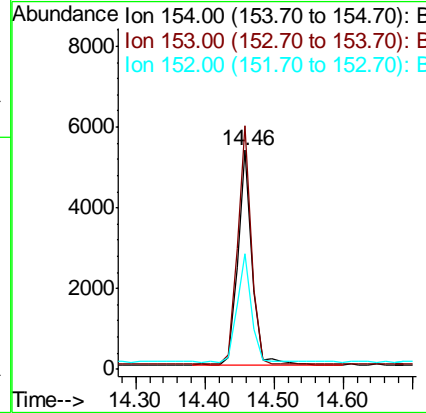
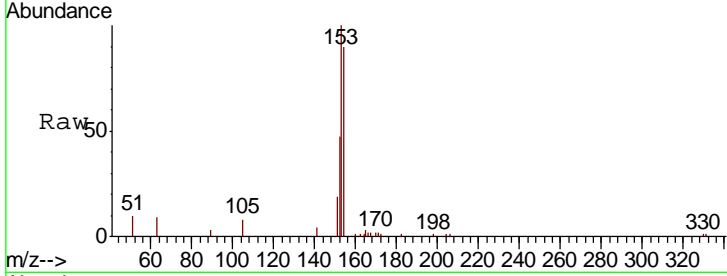




#17  
 Acenaphthene  
 Concen: 0.376 ng  
 RT: 14.46 min Scan# 1291  
 Delta R.T. 0.00 min  
 Lab File: BN011602.D  
 Acq: 24 Aug 2020 18:10

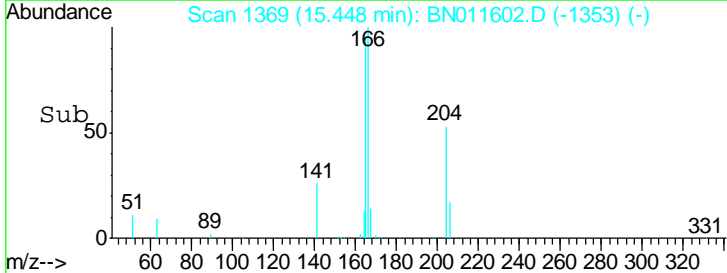
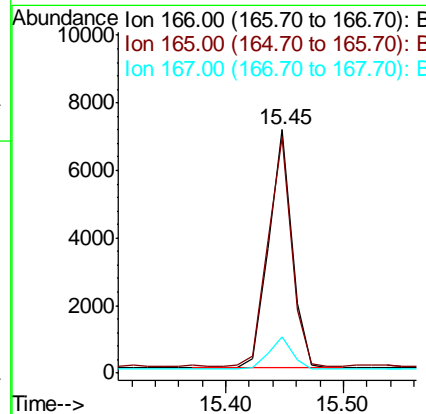
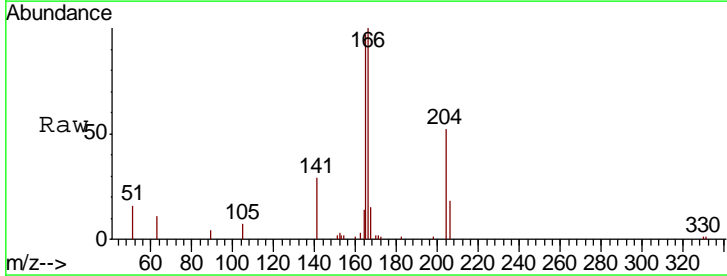
Instrument :  
 BNA\_N  
 ClientSampleId :  
 SSTDICC0.4

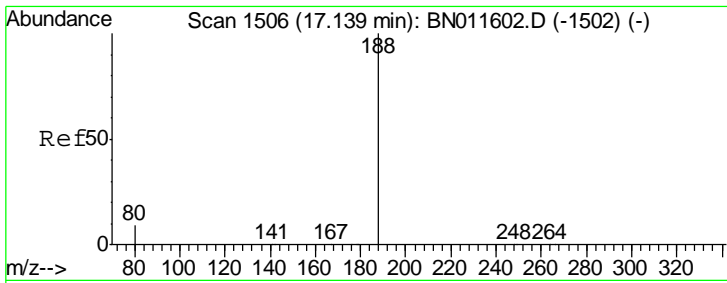
Tgt Ion	Resp	Lower	Upper
154	100		
153	108.3	86.6	130.0
152	50.1	40.1	60.1



#18  
 Fluorene  
 Concen: 0.362 ng  
 RT: 15.45 min Scan# 1369  
 Delta R.T. 0.00 min  
 Lab File: BN011602.D  
 Acq: 24 Aug 2020 18:10

Tgt Ion	Resp	Lower	Upper
166	100		
165	96.8	77.4	116.2
167	14.4	11.5	17.3

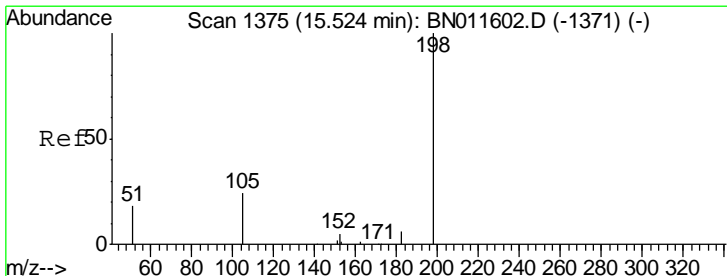
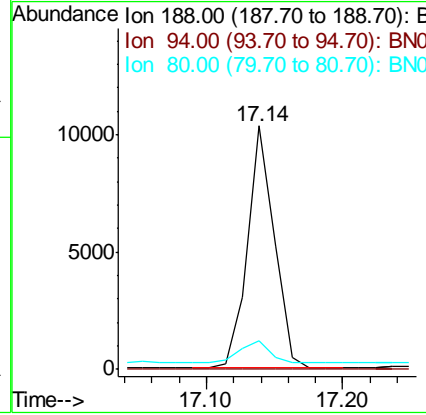
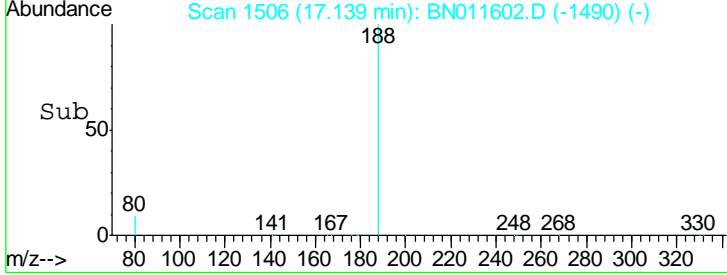
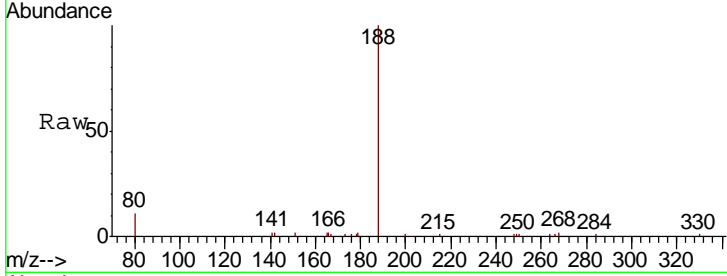




#19  
 Phenanthrene-d10  
 Concen: 0.400 ng  
 RT: 17.14 min Scan# 1506  
 Delta R.T. 0.00 min  
 Lab File: BN011602.D  
 Acq: 24 Aug 2020 18:10

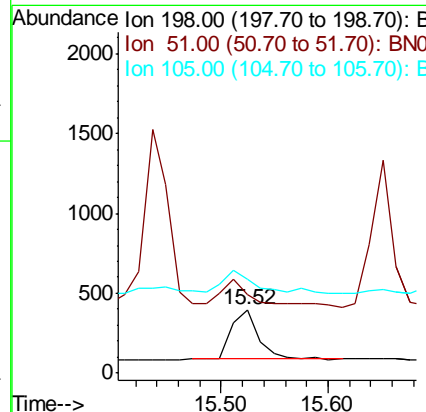
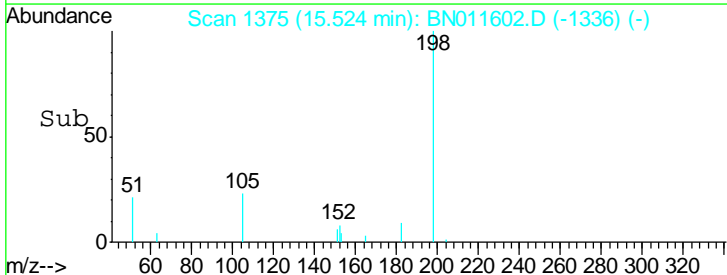
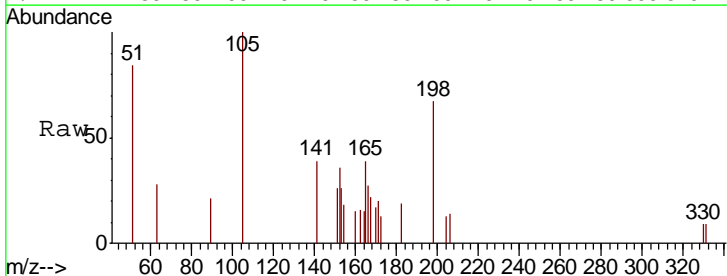
Instrument :  
 BNA\_N  
 ClientSampled :  
 SSTDICC0.4

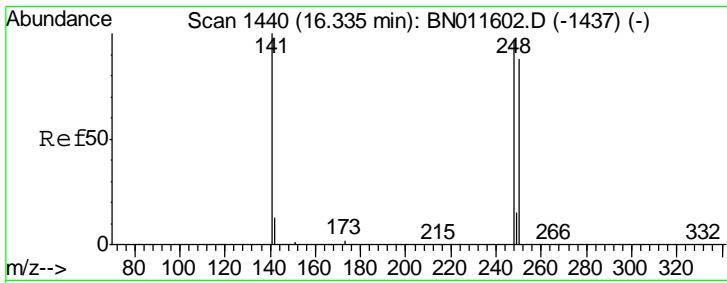
Tgt Ion	Resp	Lower	Upper
188	13945		
94	0.0	0.0	0.0
80	11.5	9.2	13.8



#20  
 4,6-Dinitro-2-methylphenol  
 Concen: 0.318 ng  
 RT: 15.52 min Scan# 1375  
 Delta R.T. 0.00 min  
 Lab File: BN011602.D  
 Acq: 24 Aug 2020 18:10

Tgt Ion	Resp	Lower	Upper
198	535		
51	124.5	99.6	149.4
105	148.5	118.8	178.2

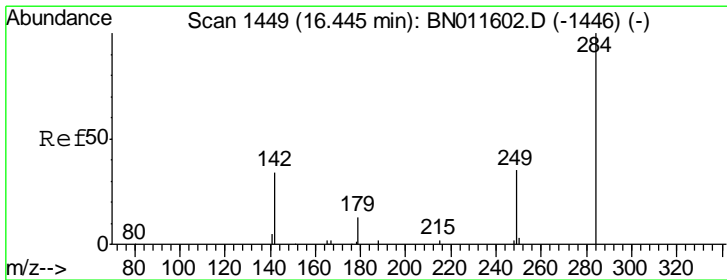
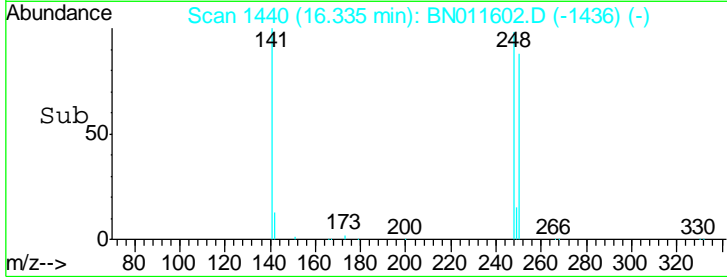
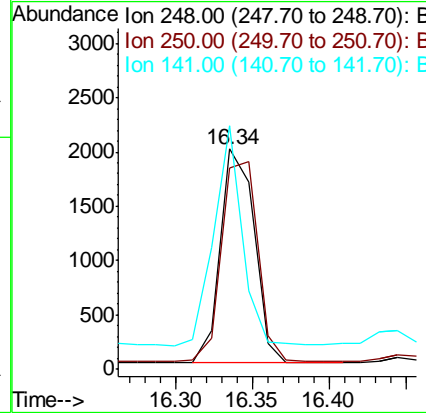
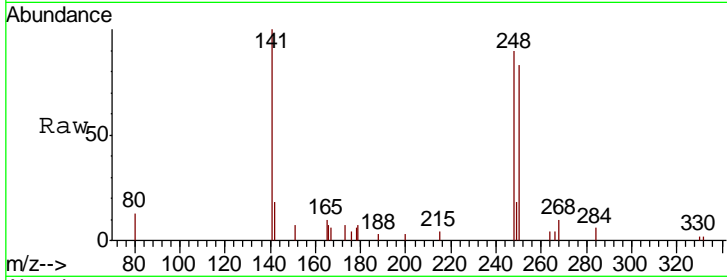




#21  
 4-Bromophenyl-phenylether  
 Concen: 0.985 ng  
 RT: 16.34 min Scan# 1440  
 Delta R.T. 0.00 min  
 Lab File: BN011602.D  
 Acq: 24 Aug 2020 18:10

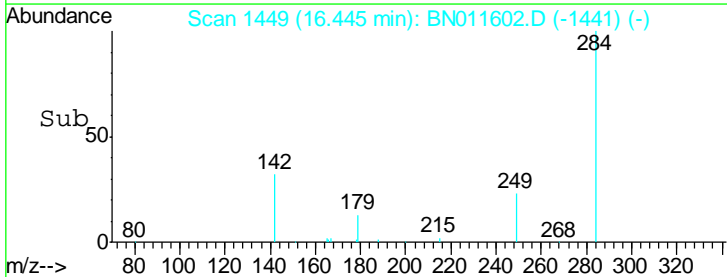
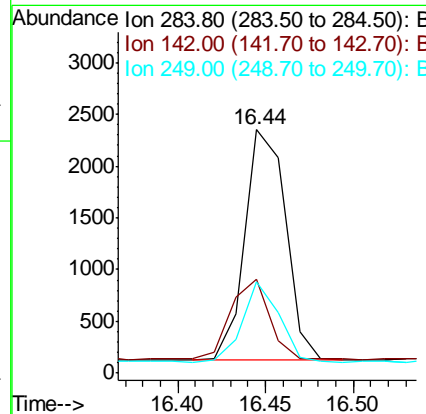
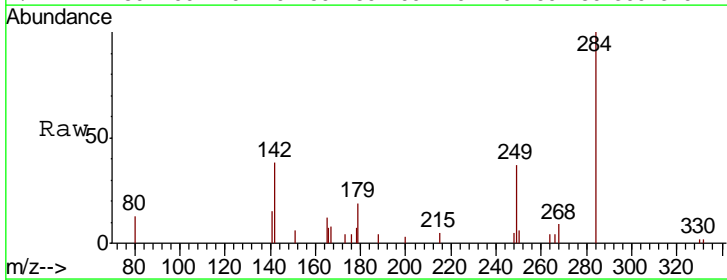
Instrument :  
 BNA\_N  
 ClientSampleId :  
 SSTDICC0.4

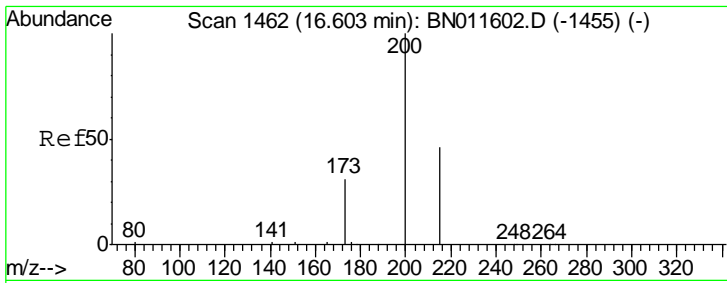
Tgt Ion	Resp	Lower	Upper
248	3000		
248	100		
250	91.8	73.4	110.2
141	110.6	88.5	132.7



#22  
 Hexachlorobenzene  
 Concen: 0.335 ng  
 RT: 16.44 min Scan# 1449  
 Delta R.T. 0.00 min  
 Lab File: BN011602.D  
 Acq: 24 Aug 2020 18:10

Tgt Ion	Resp	Lower	Upper
284	3602		
284	100		
142	34.1	27.3	40.9
249	31.5	25.2	37.8

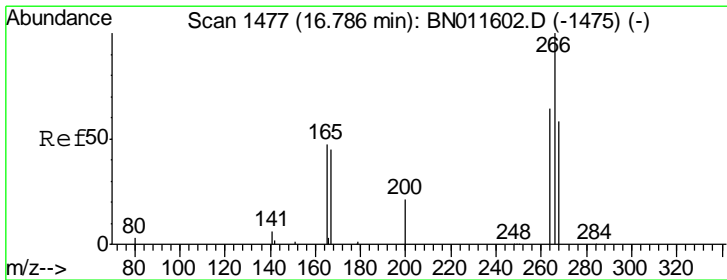
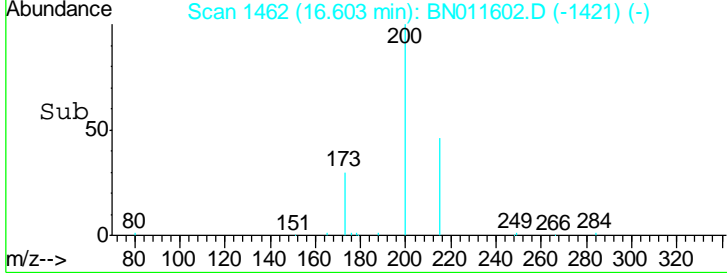
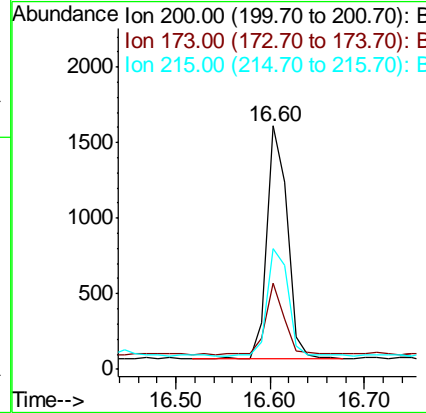
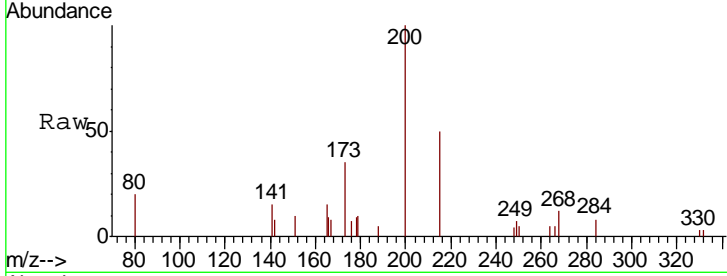




#23  
 Atrazine  
 Concen: 0.314 ng  
 RT: 16.60 min Scan# 1462  
 Delta R.T. 0.00 min  
 Lab File: BN011602.D  
 Acq: 24 Aug 2020 18:10

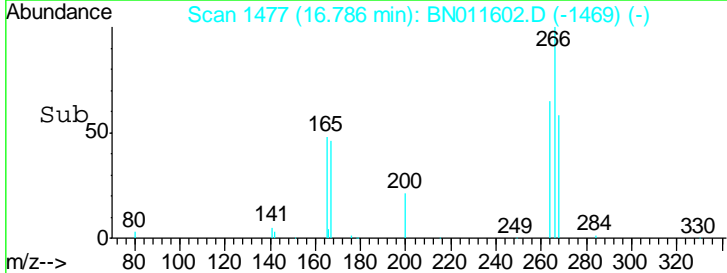
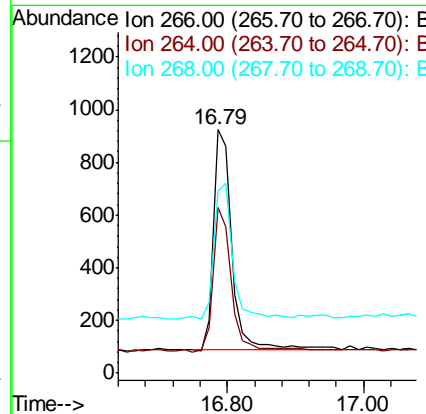
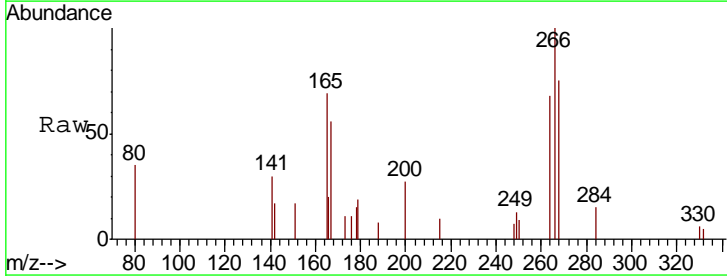
Instrument :  
 BNA\_N  
 ClientSampleId :  
 SSTD1CCC0.4

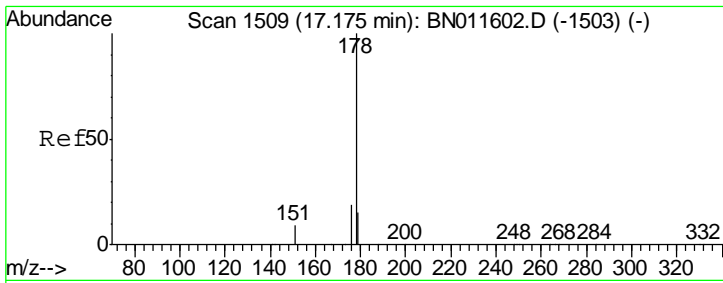
Tgt Ion	Resp	Lower	Upper
200	100		
173	35.3	28.2	42.4
215	49.7	39.8	59.6



#24  
 Pentachlorophenol  
 Concen: 0.472 ng  
 RT: 16.79 min Scan# 1477  
 Delta R.T. 0.00 min  
 Lab File: BN011602.D  
 Acq: 24 Aug 2020 18:10

Tgt Ion	Resp	Lower	Upper
266	100		
264	64.2	48.1	72.1
268	61.6	48.4	72.6

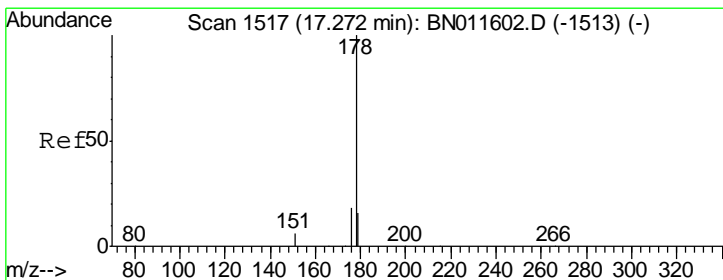
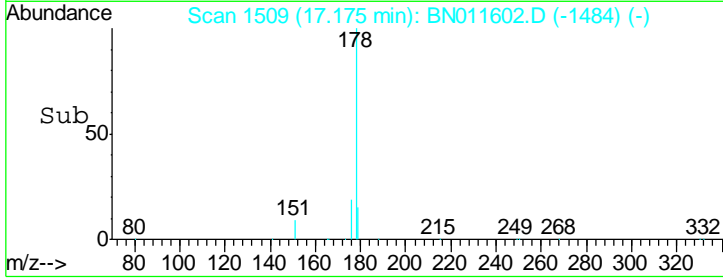
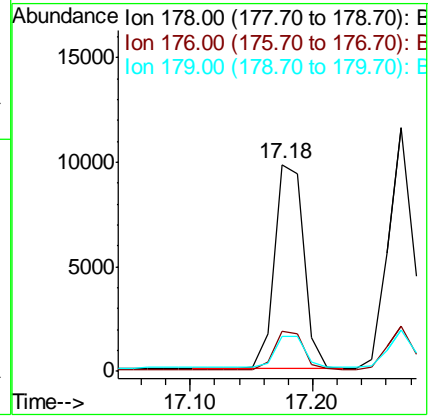
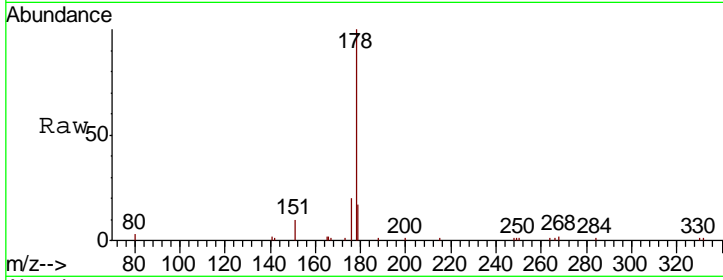




#25  
 Phenanthrene  
 Concen: 0.371 ng  
 RT: 17.18 min Scan# 1509  
 Delta R.T. 0.00 min  
 Lab File: BN011602.D  
 Acq: 24 Aug 2020 18:10

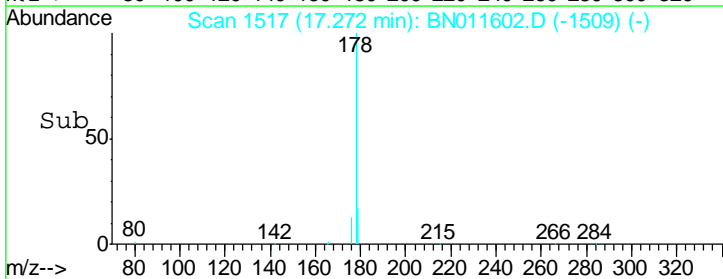
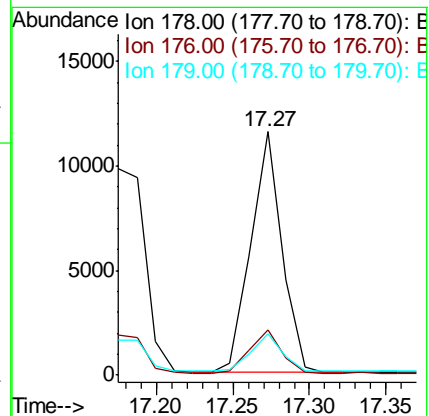
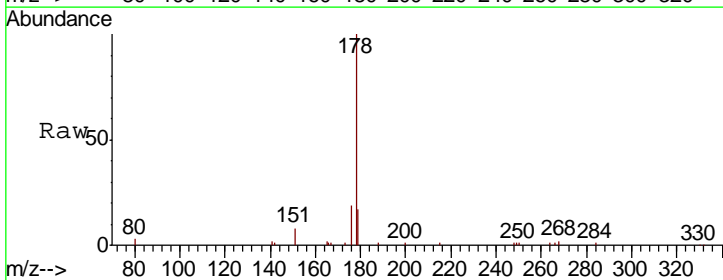
Instrument :  
 BNA\_N  
 ClientSampleId :  
 SSTD1CCC0.4

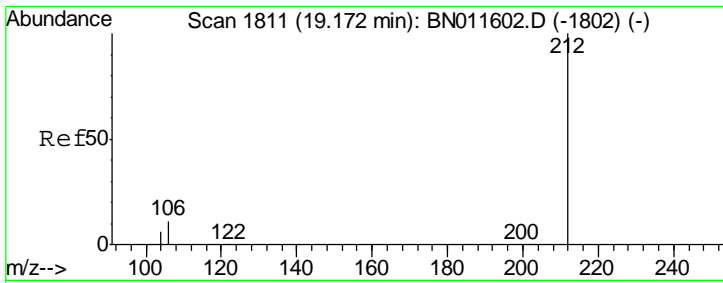
Tgt Ion	Resp	Lower	Upper
178	16292		
176	18.7	15.0	22.4
179	15.7	12.6	18.8



#26  
 Anthracene  
 Concen: 0.441 ng  
 RT: 17.27 min Scan# 1517  
 Delta R.T. 0.00 min  
 Lab File: BN011602.D  
 Acq: 24 Aug 2020 18:10

Tgt Ion	Resp	Lower	Upper
178	16131		
176	18.2	14.6	21.8
179	15.6	12.5	18.7



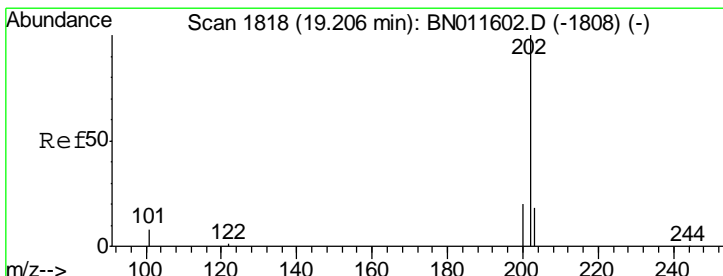
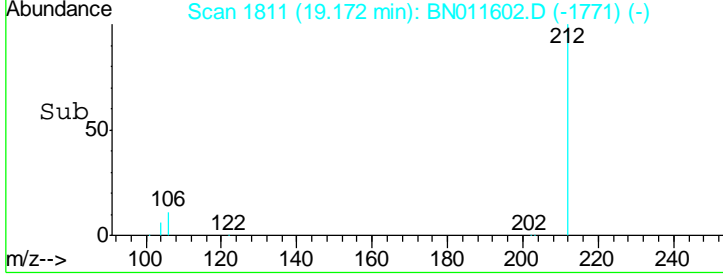
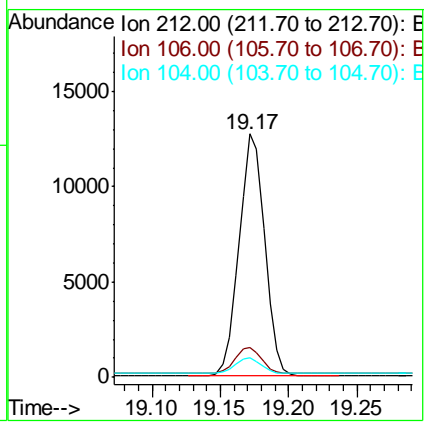
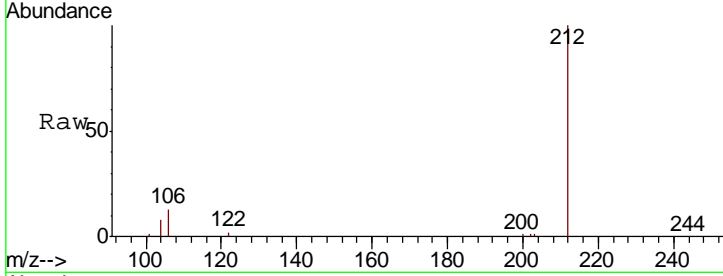


#27  
 Fluoranthene-d10  
 Concen: 0.351 ng  
 RT: 19.17 min Scan# 1811  
 Delta R.T. 0.00 min  
 Lab File: BN011602.D  
 Acq: 24 Aug 2020 18:10

**Instrument :**  
 BNA\_N  
**ClientSampled :**  
 SSTDICC0.4

Tgt Ion: 212 Resp: 16480

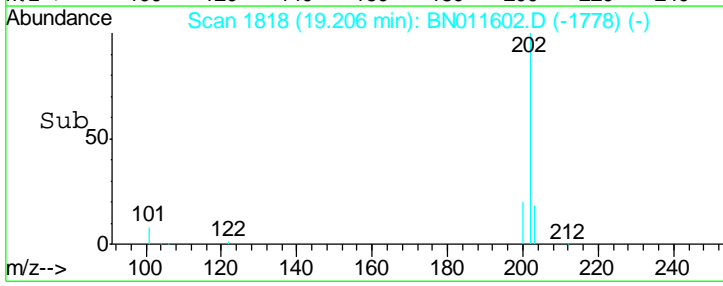
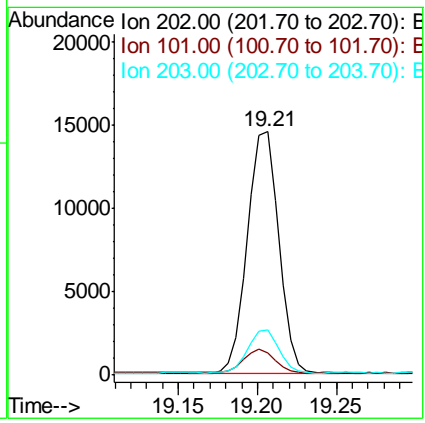
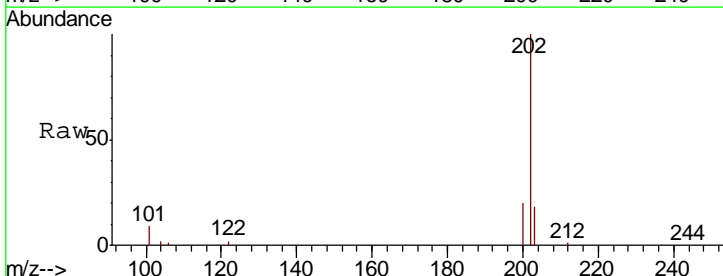
Ion	Ratio	Lower	Upper
212	100		
106	11.1	8.9	13.3
104	6.6	5.3	7.9



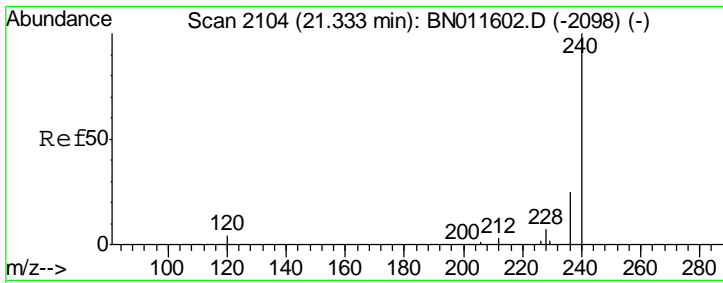
#28  
 Fluoranthene  
 Concen: 0.351 ng  
 RT: 19.21 min Scan# 1818  
 Delta R.T. 0.00 min  
 Lab File: BN011602.D  
 Acq: 24 Aug 2020 18:10

Tgt Ion: 202 Resp: 19830

Ion	Ratio	Lower	Upper
202	100		
101	9.6	7.7	11.5
203	17.4	13.9	20.9



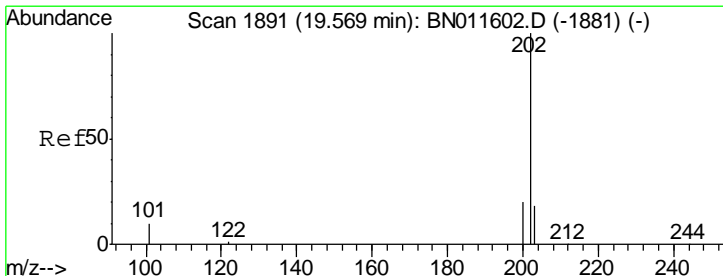
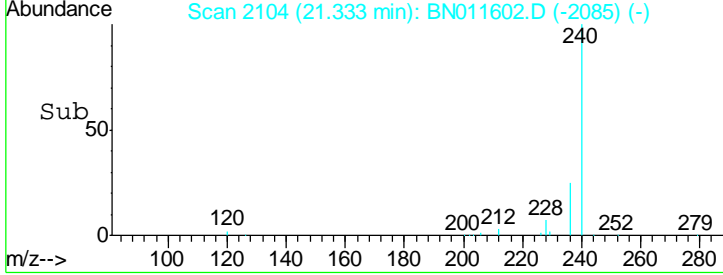
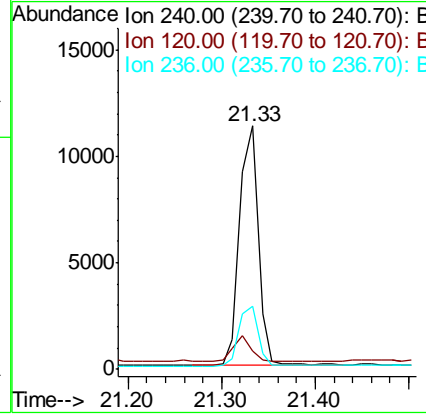
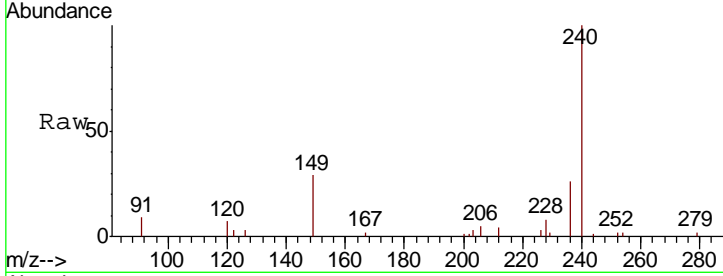




#29  
 Chrysene-d12  
 Concen: 0.400 ng  
 RT: 21.33 min Scan# 2104  
 Delta R.T. 0.00 min  
 Lab File: BN011602.D  
 Acq: 24 Aug 2020 18:10

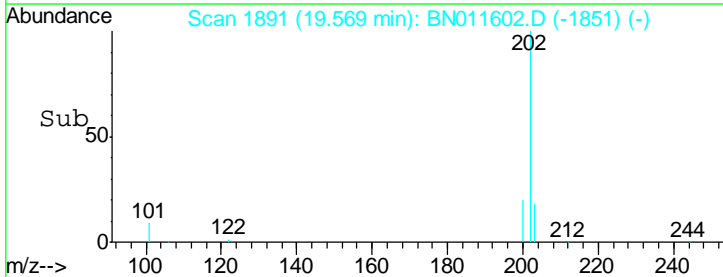
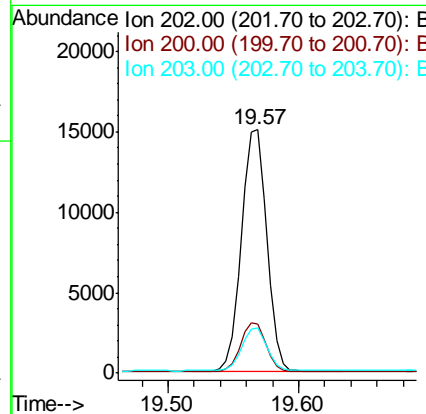
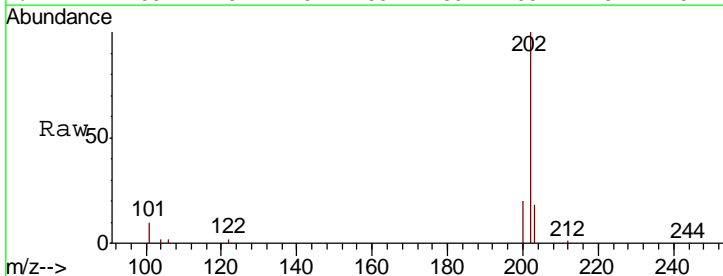
Instrument :  
 BNA\_N  
 ClientSampleId :  
 SSTD1CCC0.4

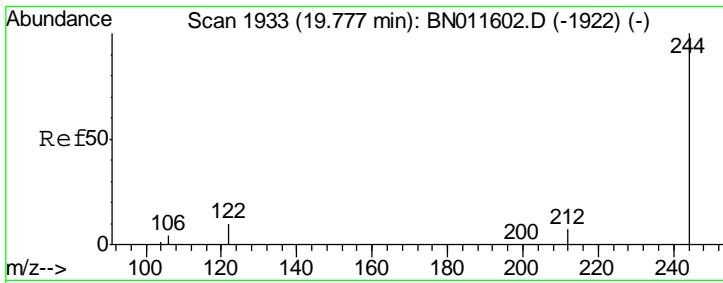
Tgt Ion	Resp	Lower	Upper
240	15478		
120	7.5	6.0	9.0
236	26.0	20.8	31.2



#30  
 Pyrene  
 Concen: 0.334 ng  
 RT: 19.57 min Scan# 1891  
 Delta R.T. 0.00 min  
 Lab File: BN011602.D  
 Acq: 24 Aug 2020 18:10

Tgt Ion	Resp	Lower	Upper
202	20579		
200	20.4	16.3	24.5
203	17.8	14.2	21.4

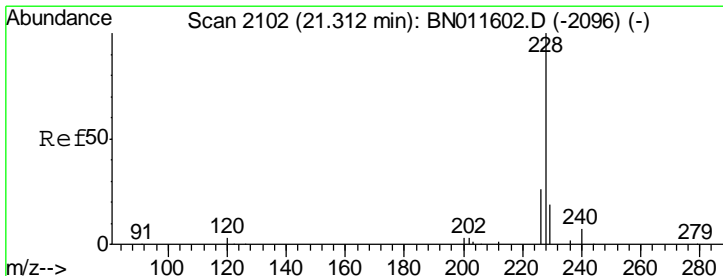
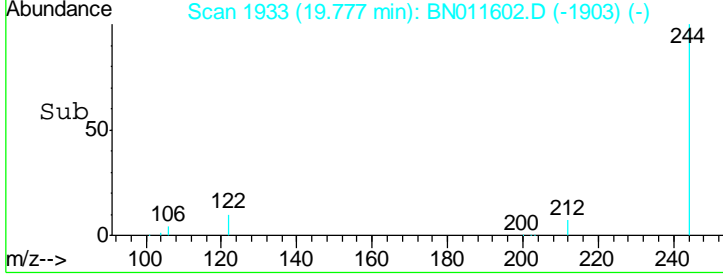
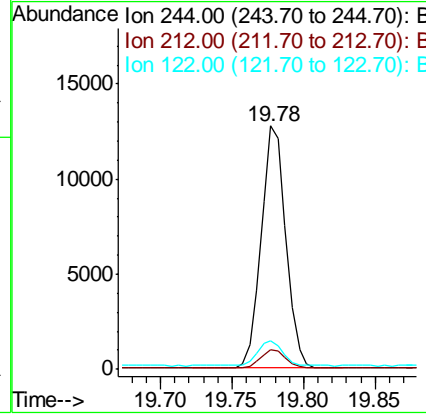
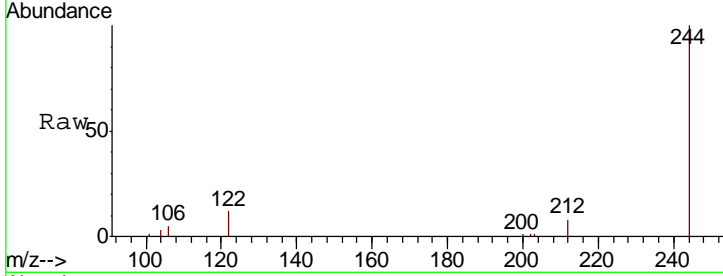




#31  
 Terphenyl-d14  
 Concen: 0.377 ng  
 RT: 19.78 min Scan# 1933  
 Delta R.T. 0.00 min  
 Lab File: BN011602.D  
 Acq: 24 Aug 2020 18:10

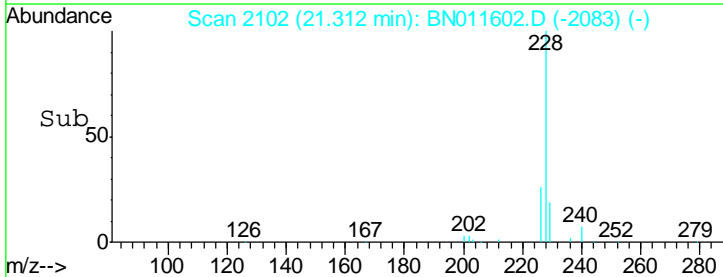
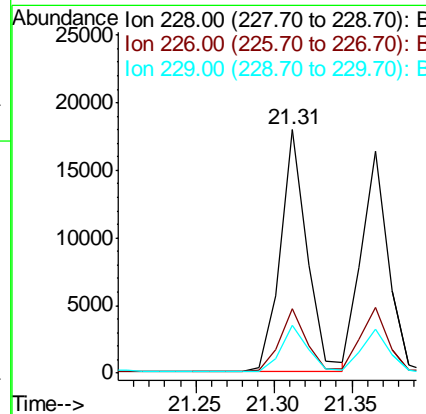
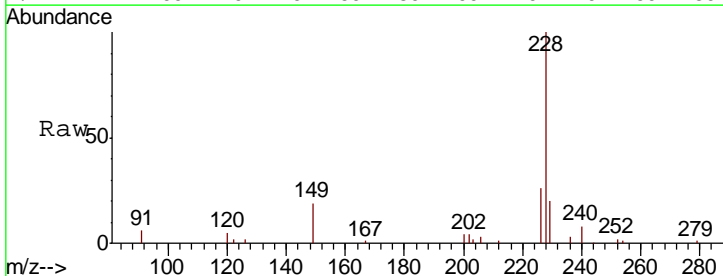
Instrument :  
 BNA\_N  
 ClientSampled :  
 SSTDICC0.4

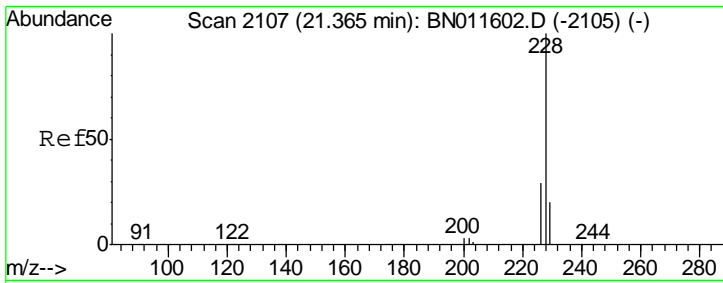
Tgt Ion	Resp	Lower	Upper
244	15229		
212	8.1	6.5	9.7
122	11.9	9.5	14.3



#32  
 Benzo(a)anthracene  
 Concen: 0.418 ng  
 RT: 21.31 min Scan# 2102  
 Delta R.T. 0.00 min  
 Lab File: BN011602.D  
 Acq: 24 Aug 2020 18:10

Tgt Ion	Resp	Lower	Upper
228	21273		
226	26.5	21.2	31.8
229	19.8	15.8	23.8

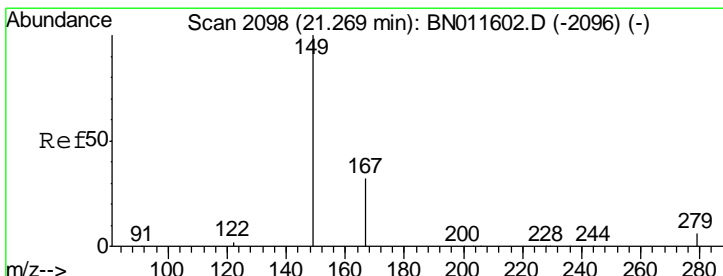
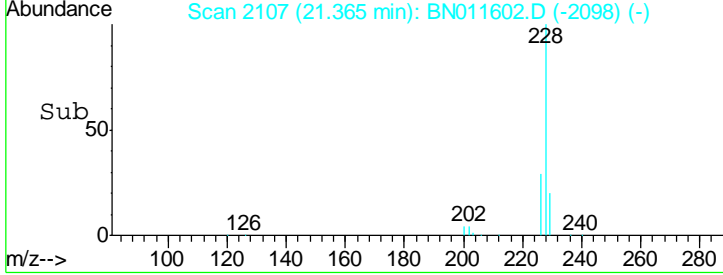
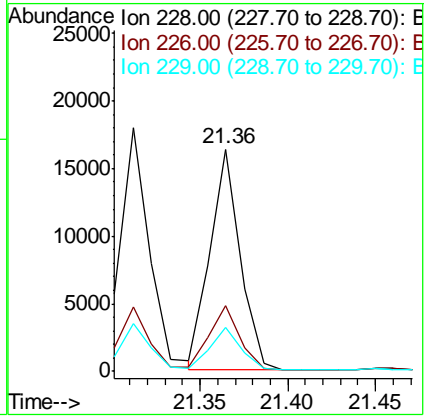
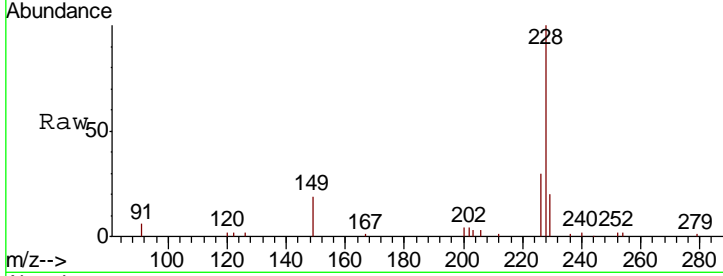




#33  
 Chrysene  
 Concen: 0.336 ng  
 RT: 21.36 min Scan# 2107  
 Delta R.T. 0.00 min  
 Lab File: BN011602.D  
 Acq: 24 Aug 2020 18:10

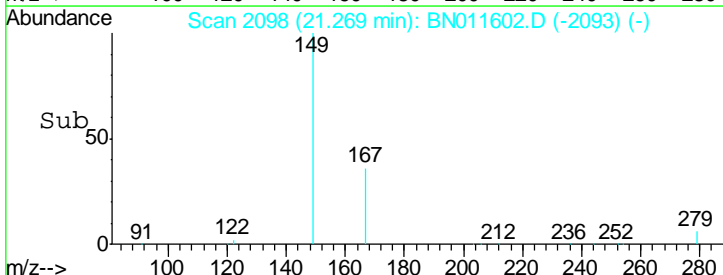
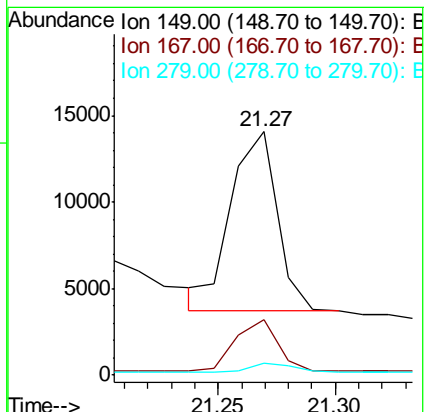
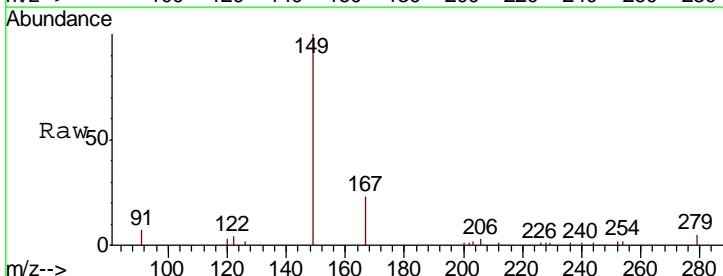
Instrument :  
 BNA\_N  
 ClientSampled :  
 SSTD1CCC0.4

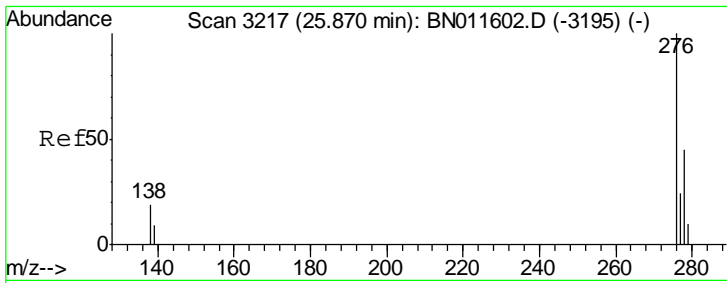
Tgt Ion	Resp	Lower	Upper
228	19413		
226	29.5	23.6	35.4
229	20.0	16.0	24.0



#34  
 Bis(2-ethylhexyl)phthalate  
 Concen: 0.564 ng  
 RT: 21.27 min Scan# 2098  
 Delta R.T. 0.00 min  
 Lab File: BN011602.D  
 Acq: 24 Aug 2020 18:10

Tgt Ion	Resp	Lower	Upper
149	14262		
167	26.0	20.6	31.0
279	4.6	3.8	5.8

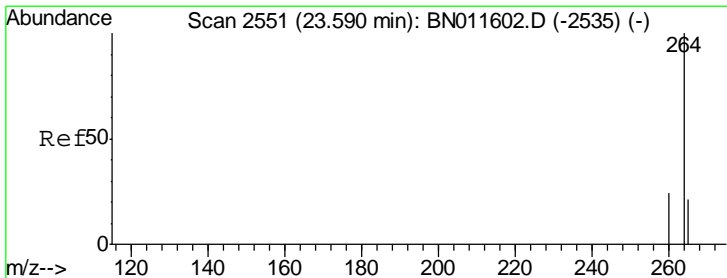
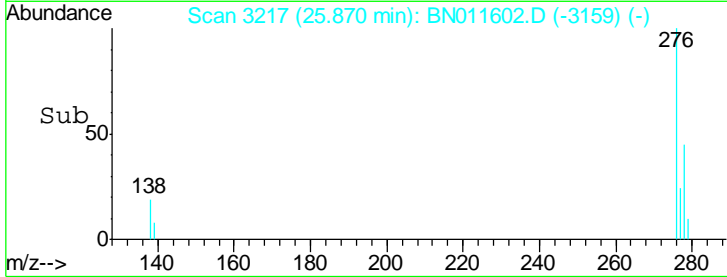
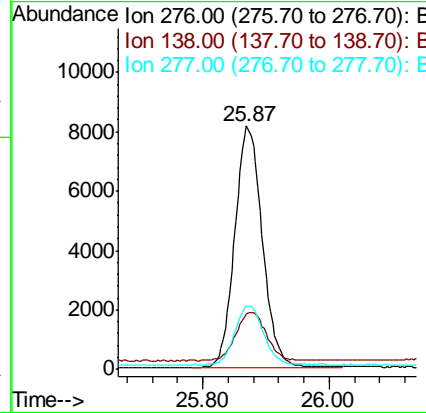
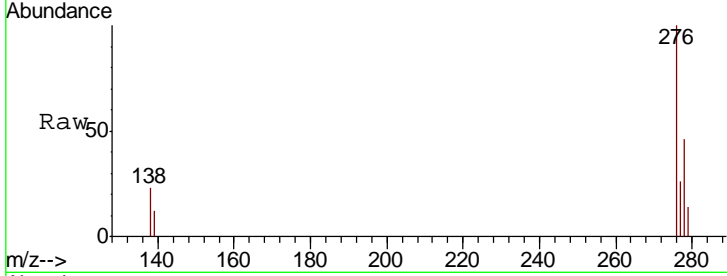




#35  
 Indeno(1,2,3-cd)pyrene  
 Concen: 0.467 ng  
 RT: 25.87 min Scan# 3217  
 Delta R.T. 0.00 min  
 Lab File: BN011602.D  
 Acq: 24 Aug 2020 18:10

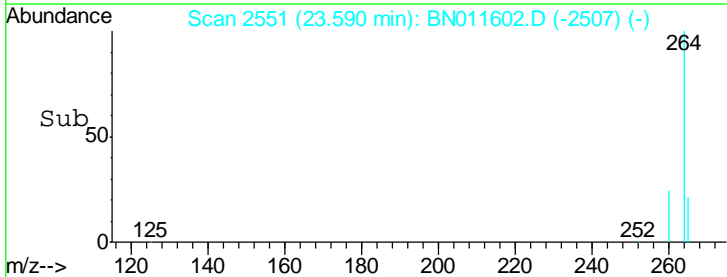
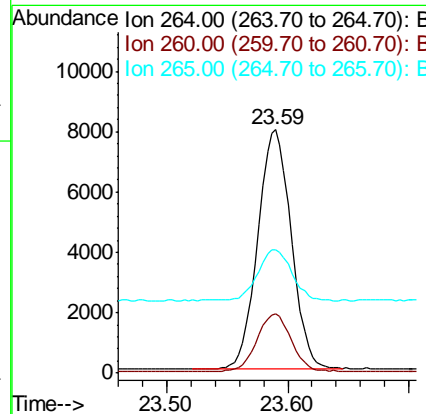
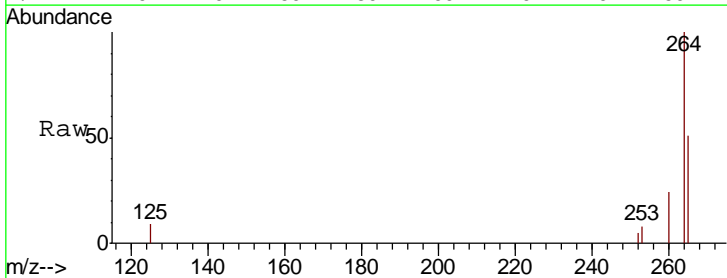
Instrument :  
 BNA\_N  
 ClientSampled :  
 SSTDICC0.4

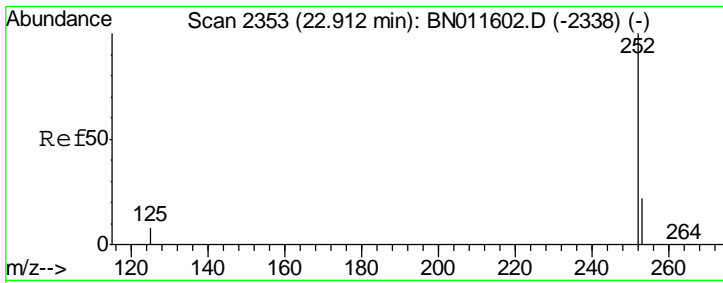
Tgt Ion	Resp	Lower	Upper
276	24521		
138	22.2	0.0	0.0#
277	25.3	0.0	0.0#



#36  
 Perylene-d12  
 Concen: 0.400 ng  
 RT: 23.59 min Scan# 2551  
 Delta R.T. 0.00 min  
 Lab File: BN011602.D  
 Acq: 24 Aug 2020 18:10

Tgt Ion	Resp	Lower	Upper
264	15241		
260	24.5	19.6	29.4
265	50.9	40.7	61.1

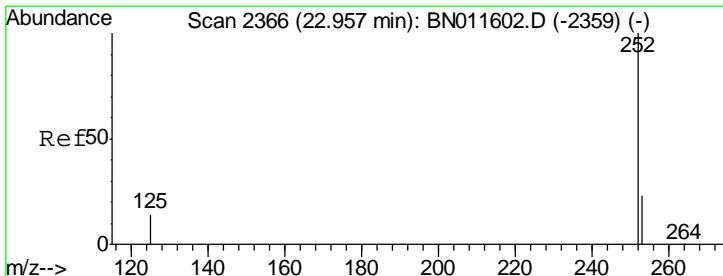
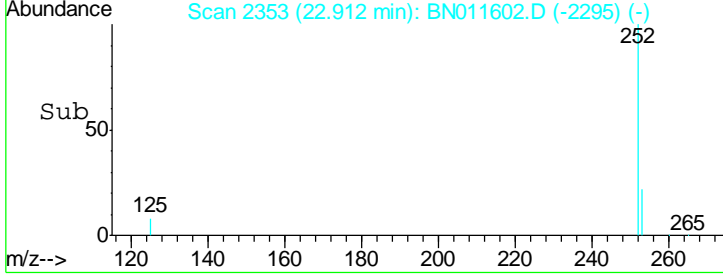
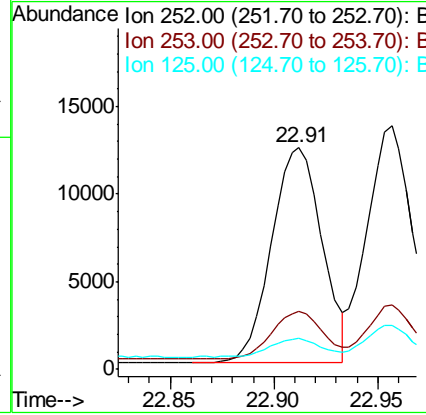
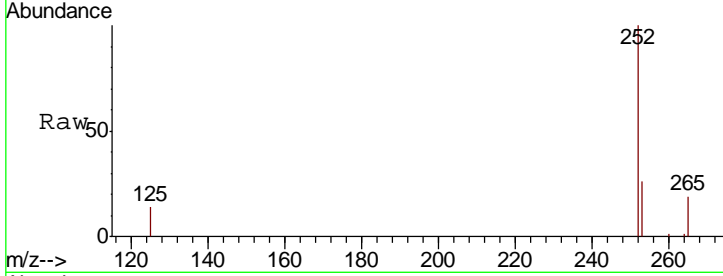




#37  
 Benzo(b)fluoranthene  
 Concen: 0.366 ng  
 RT: 22.91 min Scan# 2353  
 Delta R.T. 0.00 min  
 Lab File: BN011602.D  
 Acq: 24 Aug 2020 18:10

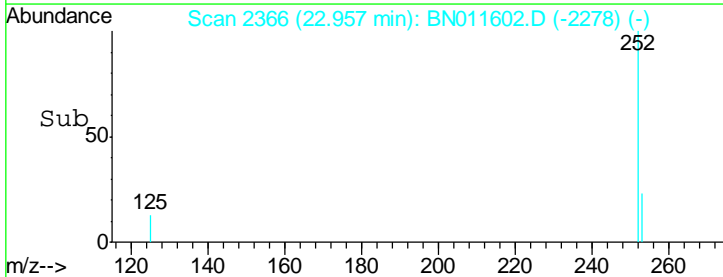
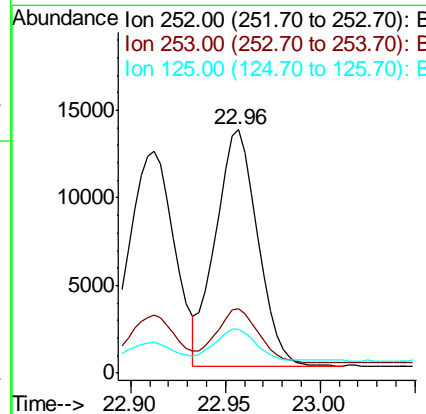
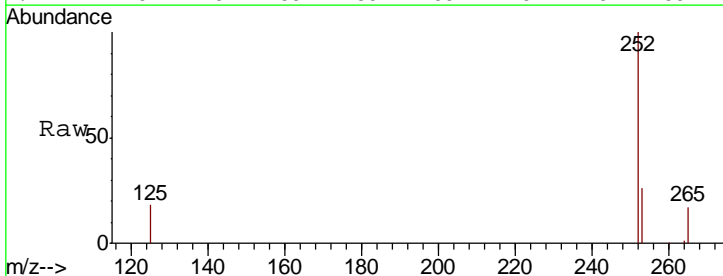
Instrument :  
 BNA\_N  
 ClientSampleId :  
 SSTDICC0.4

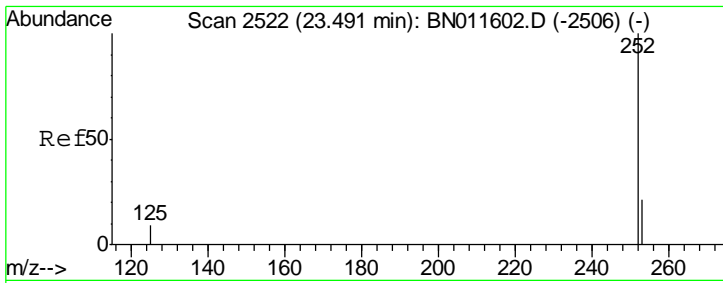
Tgt Ion	Resp	Lower	Upper
252	20633		
253	26.3	21.0	31.6
125	13.8	11.0	16.6



#38  
 Benzo(k)fluoranthene  
 Concen: 0.310 ng  
 RT: 22.96 min Scan# 2366  
 Delta R.T. 0.00 min  
 Lab File: BN011602.D  
 Acq: 24 Aug 2020 18:10

Tgt Ion	Resp	Lower	Upper
252	20807		
253	26.5	21.2	31.8
125	18.2	14.6	21.8

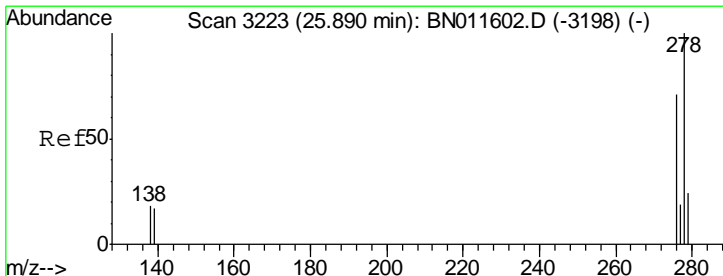
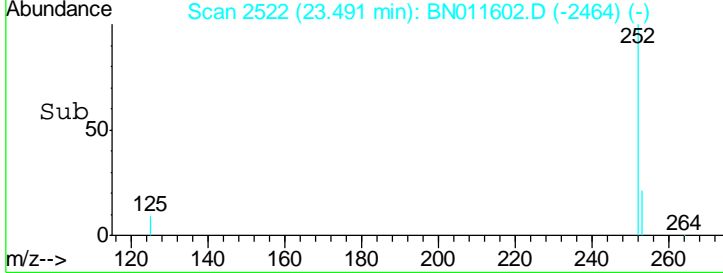
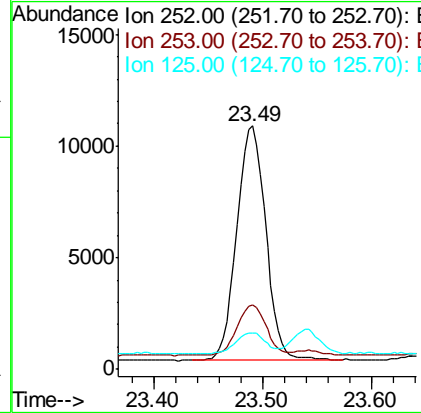
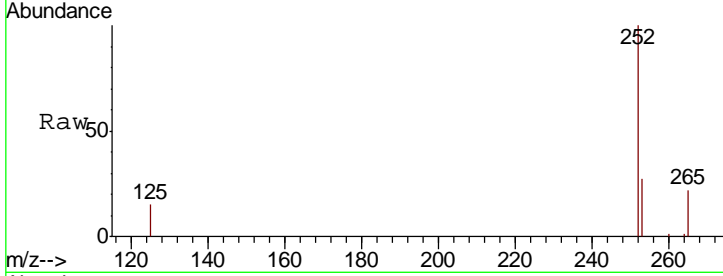




#39  
 Benzo(a)pyrene  
 Concen: 0.374 ng  
 RT: 23.49 min Scan# 2522  
 Delta R.T. 0.00 min  
 Lab File: BN011602.D  
 Acq: 24 Aug 2020 18:10

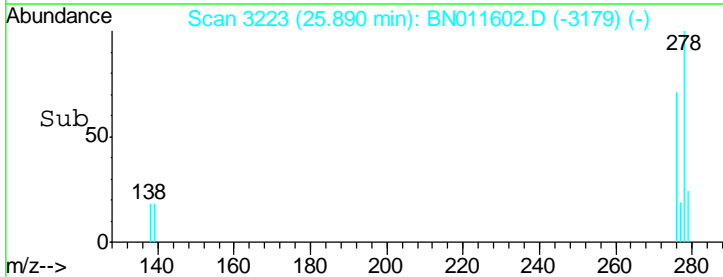
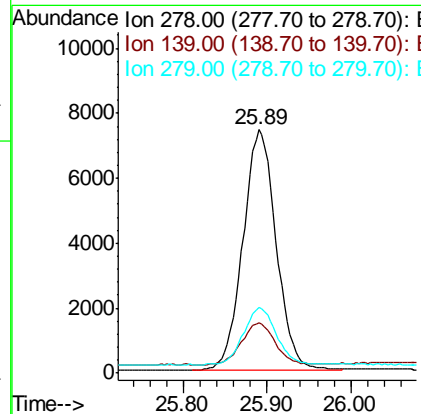
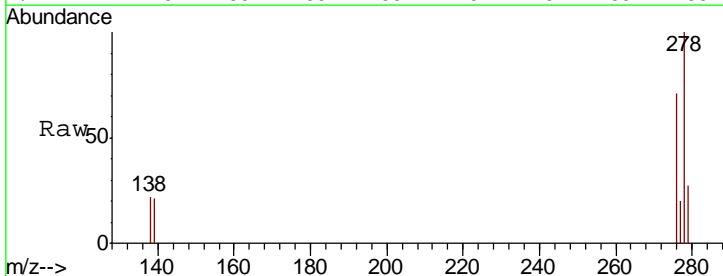
Instrument :  
 BNA\_N  
 ClientSampled :  
 SSTDICC0.4

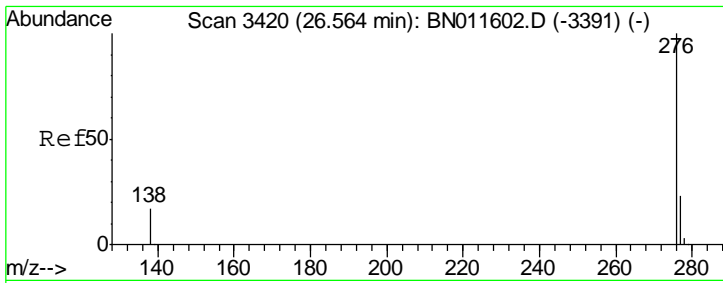
Tgt Ion	Resp	Lower	Upper
252	19515		
253	26.5	21.2	31.8
125	15.1	12.1	18.1



#40  
 Dibenzo(a,h)anthracene  
 Concen: 0.467 ng  
 RT: 25.89 min Scan# 3223  
 Delta R.T. 0.00 min  
 Lab File: BN011602.D  
 Acq: 24 Aug 2020 18:10

Tgt Ion	Resp	Lower	Upper
278	20343		
139	20.8	16.6	25.0
279	26.8	21.4	32.2





#41  
 Benzo(a,h,i)perylene  
 Concen: 0.383 ng  
 RT: 26.56 min Scan# 3420  
 Delta R.T. 0.00 min  
 Lab File: BN011602.D  
 Acq: 24 Aug 2020 18:10

**Instrument :**  
 BNA\_N  
**ClientSampled :**  
 SSTDICC0.4

Tot Ion: 276 Resp: 19903

Ion	Ratio	Lower	Upper
276	100		
277	25.6	20.5	30.7
138	22.2	17.8	26.6

