

Data Path : Z:\SVOASRV\HPCHEM1\BNA N\DATA\BN082819\
 Data File : BN007475.D
 Acq On : 28 Aug 2019 19:12
 Operator : HP/JU
 Sample : K4373-17
 Misc :
 ALS Vial : 48 Sample Multiplier: 1

Instrument :
 BNA_N
ClientSampleId :
 C0AD8

Manual Integrations
APPROVED
 mohammad
 8/29/2019 7:50:50 AM

Quant Time: Aug 28 23:24:11 2019
 Quant Method : Z:\SVOASRV\HPCHEM1\BNA N\METHODS\SOM-EPA-SIM-BN082819.M
 Quant Title : ASP BNA STANDARDS FOR 5 POINT CALIBRATION
 QLast Update : Tue Aug 27 20:30:31 2019
 Response via : Initial Calibration

Internal Standards	R.T.	QIon	Response	Conc	Units	Dev(Min)
1) 1,4-Dichlorobenzene-d4	7.40	152	5152	0.40	ng/ul	0.00
2) Naphthalene-d8	10.15	136	22833	0.40	ng/ul	0.00
6) Acenaphthene-d10	14.05	164	11906	0.40	ng/ul	0.00
10) Phenanthrene-d10	16.80	188	26588m	0.40	ng/ul	0.00
16) Chrysene-d12	21.02	240	21604m	0.40	ng/ul	0.00
20) Perylene-d12	23.12	264	19083m	0.40	ng/ul	0.00
System Monitoring Compounds						
4) 2-Methylnaphthalene-d10	11.75	152	10362	0.29	ng/ul	0.00
14) Fluoranthene-d10	18.84	212	26994m	0.31	ng/ul	0.00
Target Compounds						
3) Naphthalene	10.20	128	3761	0.058	ng/ul#	Ovalue 90

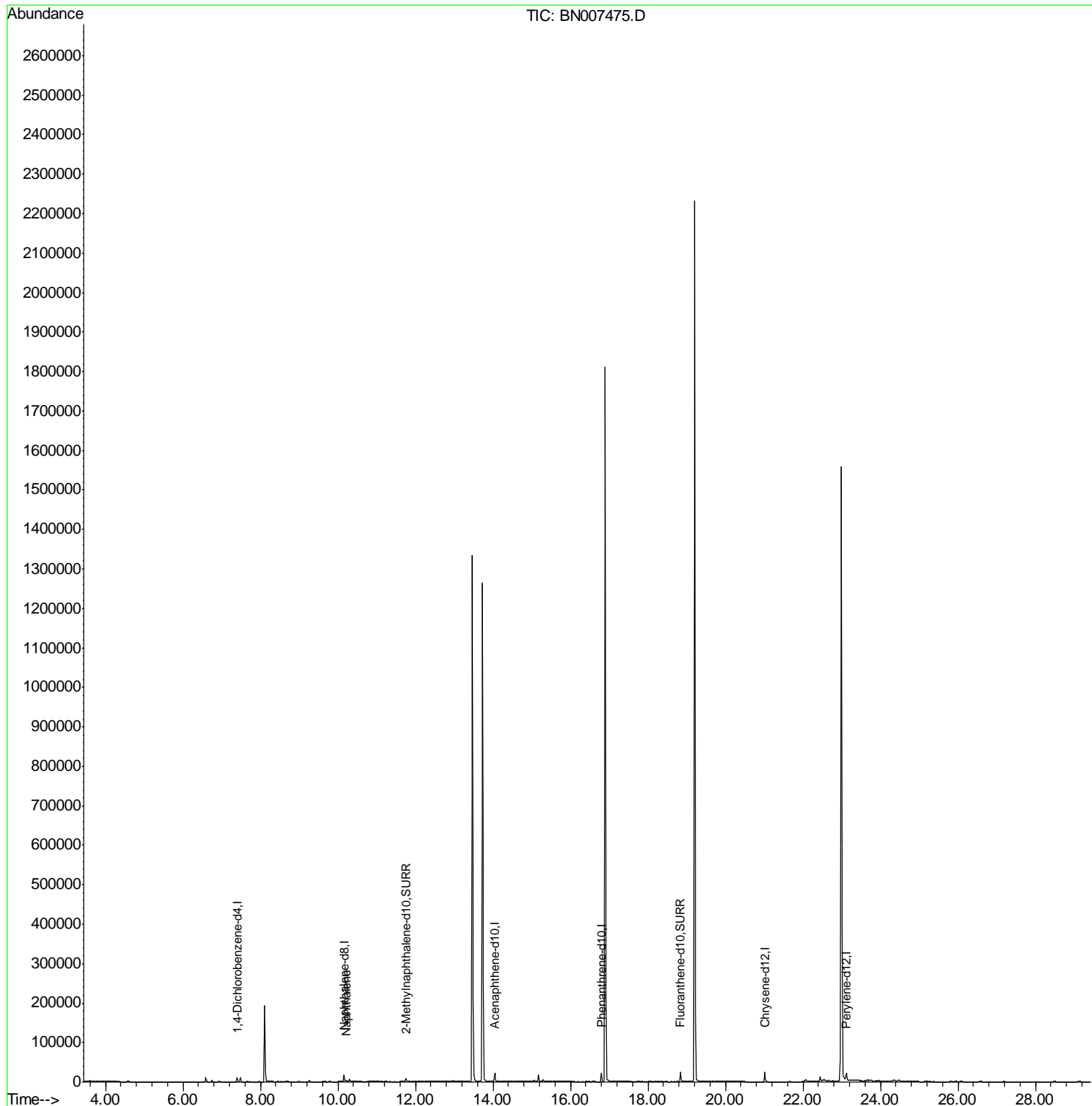
(#) = qualifier out of range (m) = manual integration (+) = signals summed

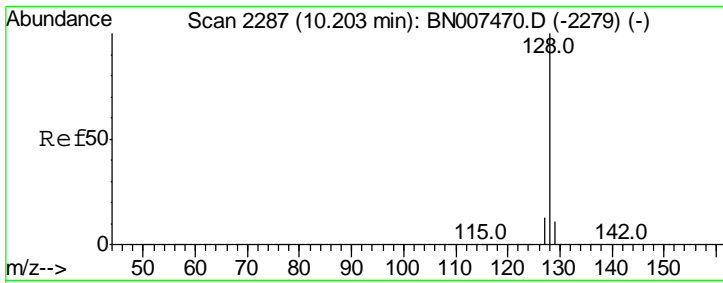
Data Path : Z:\SVOASRV\HPCHEM1\BNA N\DATA\BN082819\
 Data File : BN007475.D
 Acq On : 28 Aug 2019 19:12
 Operator : HP/JU
 Sample : K4373-17
 Misc :
 ALS Vial : 48 Sample Multiplier: 1

Instrument :
 BNA_N
ClientSampleId :
 C0AD8

Manual Integrations
APPROVED
 mohammad
 8/29/2019 7:50:50 AM

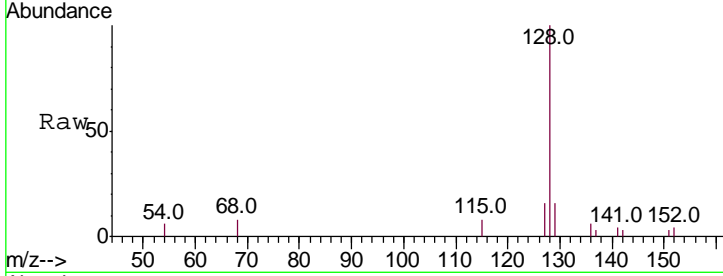
Quant Time: Aug 28 23:24:11 2019
 Quant Method : Z:\SVOASRV\HPCHEM1\BNA N\METHODS\SOM-EPA-SIM-BN082819.M
 Quant Title : ASP BNA STANDARDS FOR 5 POINT CALIBRATION
 QLast Update : Tue Aug 27 20:30:31 2019
 Response via : Initial Calibration





#3
 Naphthalene
 Concen: 0.058 ng/ul
 RT: 10.20 min Scan# 2287
 Delta R.T. -0.01 min
 Lab File: BN007475.D
 Acq: 28 Aug 2019 19:12

Instrument :
 BNA_N
ClientSampled :
 C0AD8



Tot Ion: 128 Resp: 3761

Ion	Ratio	Lower	Upper
128	100		
129	16.2	9.2	13.8#
127	16.4	10.4	15.6#

Manual Integrations
APPROVED
 mohammad
 8/29/2019 7:50:50 AM

