

Data Path : Z:\svoasrv\HPCHEM1\BNA_N\Data\BN083023\
 Data File : BN027288.D
 Acq On : 31 Aug 2023 00:14
 Operator : MA/JU
 Sample : 04051-20DL 2X
 Misc :
 ALS Vial : 67 Sample Multiplier: 1

Instrument :
 BNA_N
 ClientSampleId :
 RE120D1-20230816DL

Quant Time: Aug 31 04:30:55 2023
 Quant Method : Z:\svoasrv\HPCHEM1\BNA_N\Methods\8270-SIM-BN082923.M
 Quant Title : ASP BNA STANDARDS FOR 5 POINT CALIBRATION
 QLast Update : Tue Aug 29 05:37:30 2023
 Response via : Initial Calibration

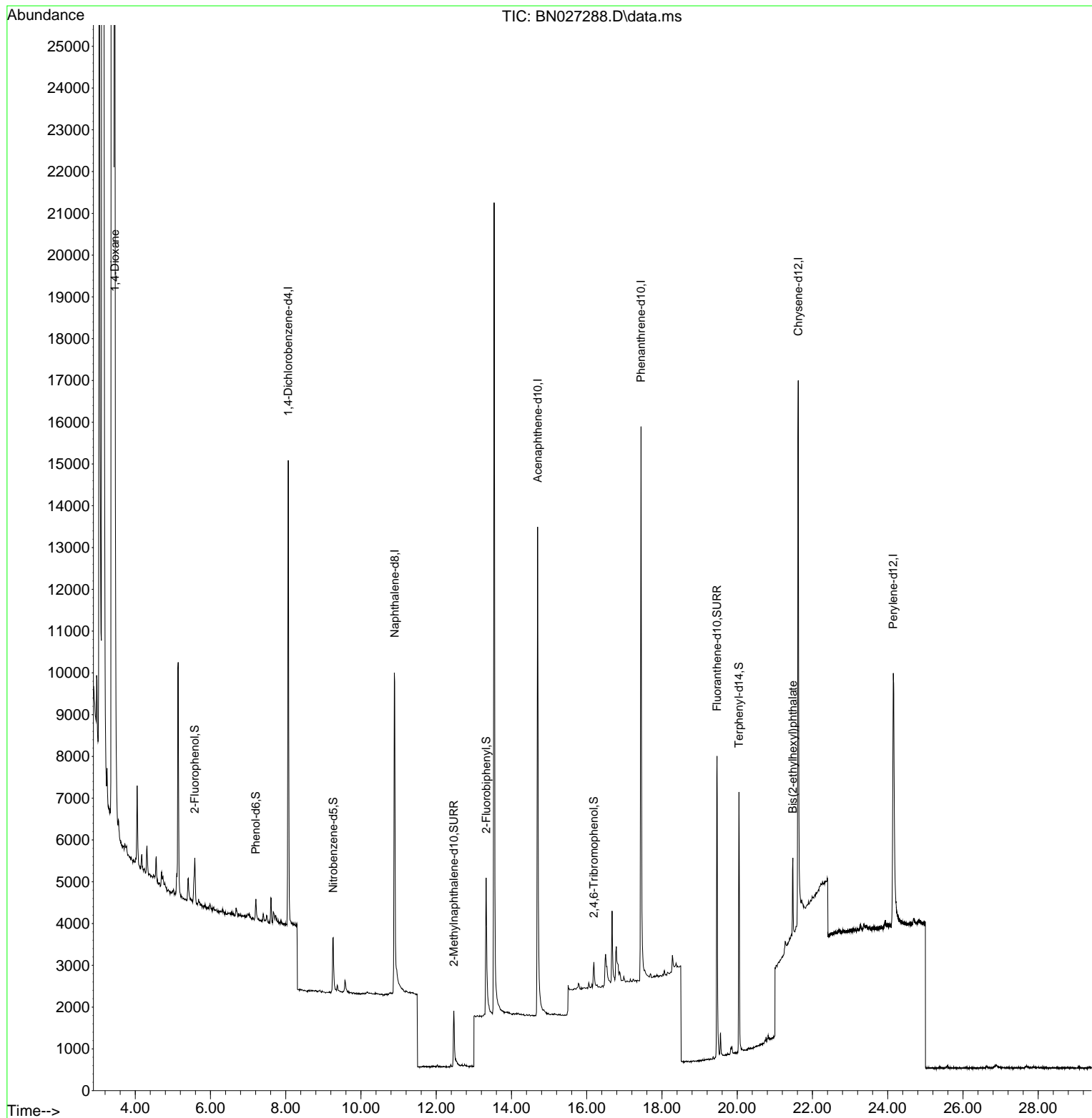
Compound	R.T.	QIon	Response	Conc Units	Dev(Min)
Internal Standards					
1) 1,4-Dichlorobenzene-d4	8.066	152	5268	0.400 ng	0.00
7) Naphthalene-d8	10.895	136	13315	0.400 ng	# 0.00
13) Acenaphthene-d10	14.694	164	8193	0.400 ng	0.00
19) Phenanthrene-d10	17.443	188	20148	0.400 ng	0.00
29) Chrysene-d12	21.623	240	15364	0.400 ng	0.00
35) Perylene-d12	24.148	264	12930	0.400 ng	0.00
System Monitoring Compounds					
4) 2-Fluorophenol	5.582	112	854	0.062 ng	0.00
5) Phenol-d6	7.207	99	569	0.034 ng	0.00
8) Nitrobenzene-d5	9.262	82	1363	0.140 ng	0.00
11) 2-Methylnaphthalene-d10	12.468	152	2666	0.136 ng	0.00
14) 2,4,6-Tribromophenol	16.189	330	448	0.148 ng	0.00
15) 2-Fluorobiphenyl	13.326	172	4185	0.134 ng	0.00
27) Fluoranthene-d10	19.463	212	8639	0.172 ng	0.00
31) Terphenyl-d14	20.048	244	6607	0.214 ng	0.00
Target Compounds					
2) 1,4-Dioxane	3.458	88	20871	3.245 ng	95
34) Bis(2-ethylhexyl)phtha...	21.480	149	1949	0.077 ng	97

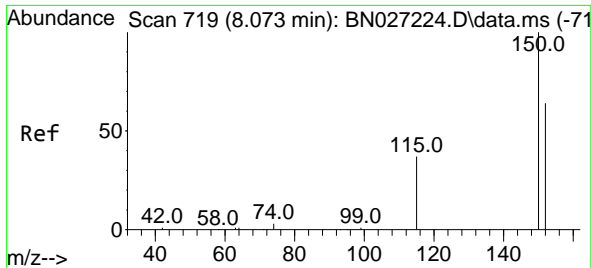
(#) = qualifier out of range (m) = manual integration (+) = signals summed

Data Path : Z:\svoasrv\HPCHEM1\BNA_N\Data\BN083023\
Data File : BN027288.D
Acq On : 31 Aug 2023 00:14
Operator : MA/JU
Sample : 04051-20DL 2X
Misc :
ALS Vial : 67 Sample Multiplier: 1

Instrument :
BNA_N
ClientSampleId :
RE120D1-20230816DL

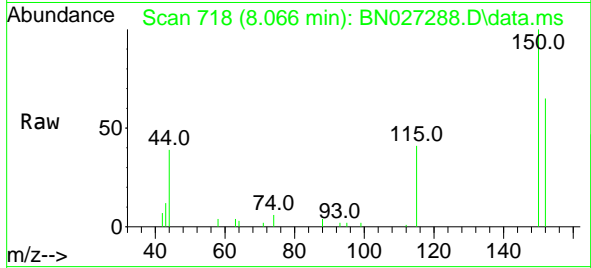
Quant Time: Aug 31 04:30:55 2023
Quant Method : Z:\svoasrv\HPCHEM1\BNA_N\Methods\8270-SIM-BN082923.M
Quant Title : ASP BNA STANDARDS FOR 5 POINT CALIBRATION
QLast Update : Tue Aug 29 05:37:30 2023
Response via : Initial Calibration



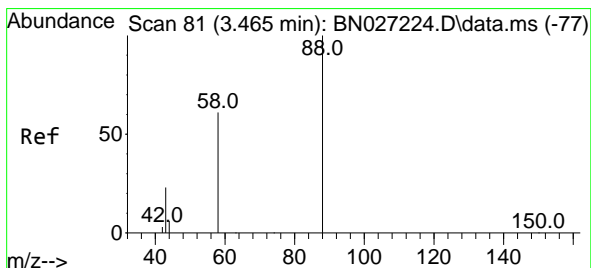
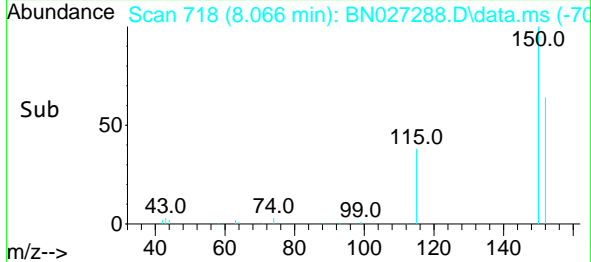
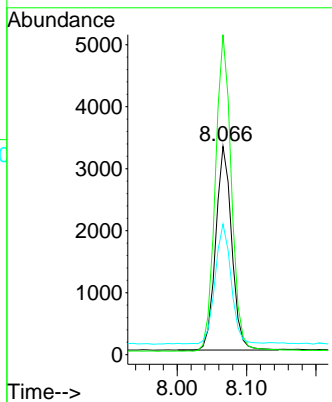


#1
 1,4-Dichlorobenzene-d4
 Concen: 0.400 ng
 RT: 8.066 min Scan# 71
 Delta R.T. -0.007 min
 Lab File: BN027288.D
 Acq: 31 Aug 2023 00:14

Instrument :
 BNA_N
 ClientSampleId :
 RE120D1-20230816DL

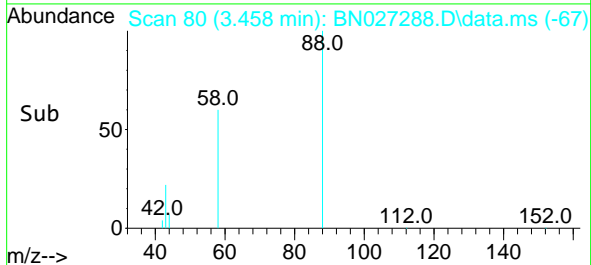
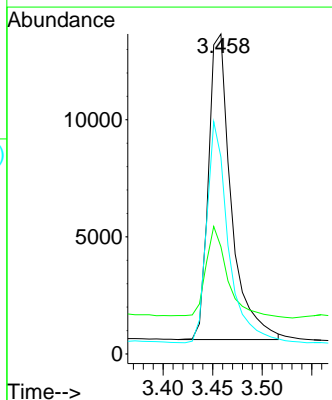
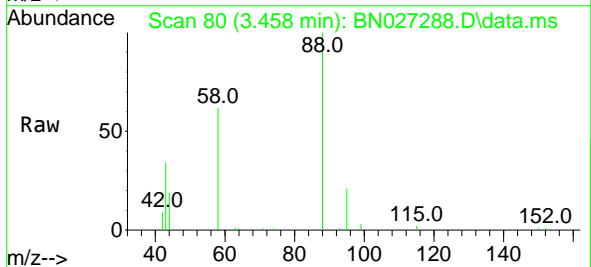


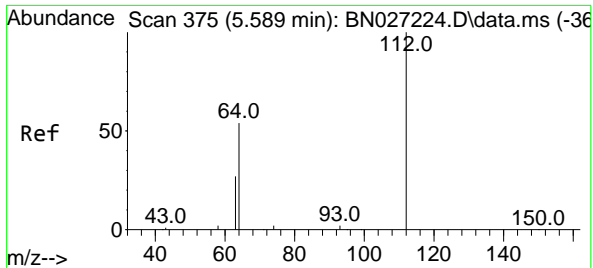
Tgt Ion:152 Resp: 5268
 Ion Ratio Lower Upper
 152 100
 150 153.6 122.7 184.1
 115 62.7 48.6 73.0



#2
 1,4-Dioxane
 Concen: 3.245 ng
 RT: 3.458 min Scan# 80
 Delta R.T. -0.007 min
 Lab File: BN027288.D
 Acq: 31 Aug 2023 00:14

Tgt Ion: 88 Resp: 20871
 Ion Ratio Lower Upper
 88 100
 43 27.2 19.1 28.7
 58 68.6 52.2 78.2



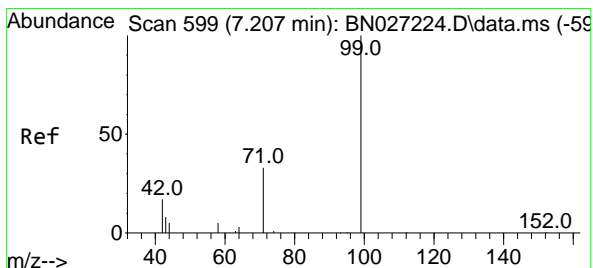
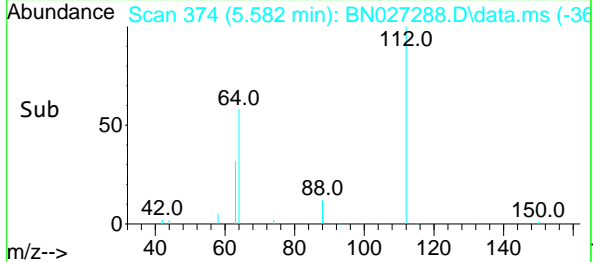
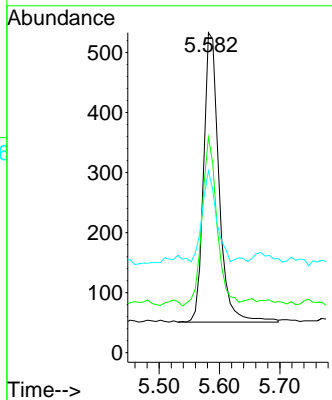
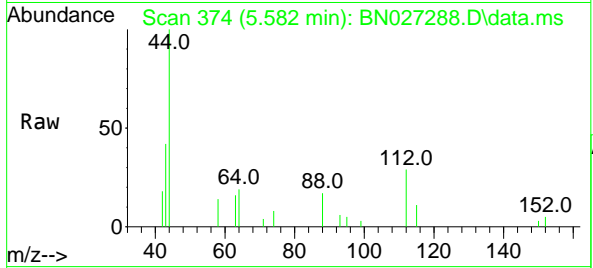


#4
 2-Fluorophenol
 Concen: 0.062 ng
 RT: 5.582 min Scan# 31
 Delta R.T. -0.007 min
 Lab File: BN027288.D
 Acq: 31 Aug 2023 00:14

Instrument :
 BNA_N
 ClientSampleId :
 RE120D1-20230816DL

Tgt Ion: 112 Resp: 854

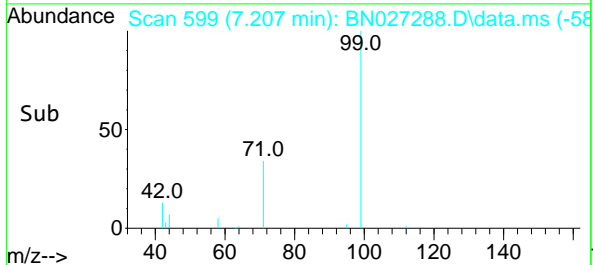
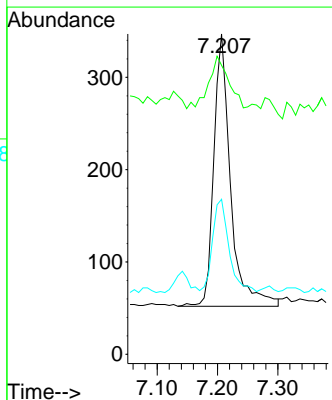
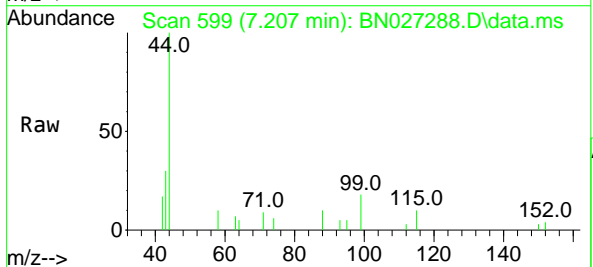
Ion	Ratio	Lower	Upper
112	100		
64	56.9	44.4	66.6
63	29.0	23.1	34.7

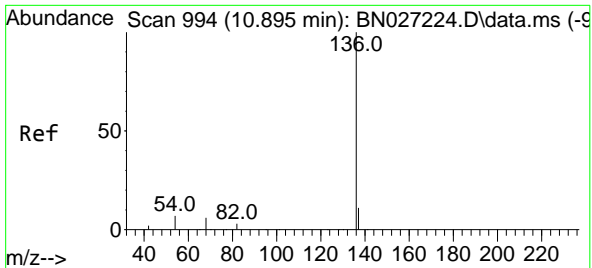


#5
 Phenol-d6
 Concen: 0.034 ng
 RT: 7.207 min Scan# 599
 Delta R.T. -0.000 min
 Lab File: BN027288.D
 Acq: 31 Aug 2023 00:14

Tgt Ion: 99 Resp: 569

Ion	Ratio	Lower	Upper
99	100		
42	20.4	14.5	21.7
71	33.2	25.8	38.6



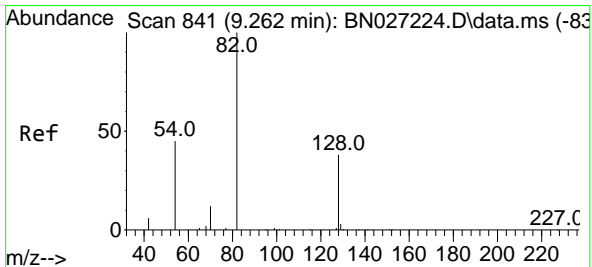
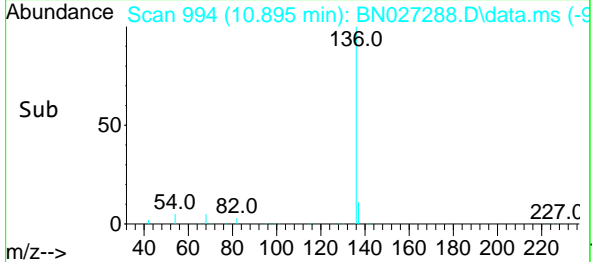
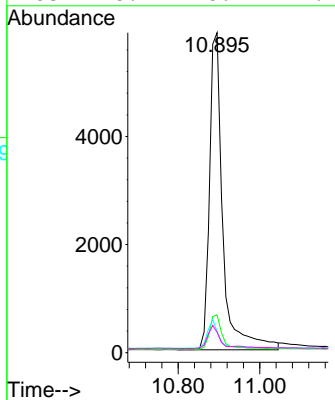
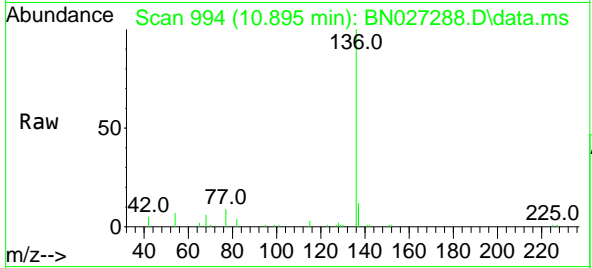


#7
 Naphthalene-d8
 Concen: 0.400 ng
 RT: 10.895 min Scan# 994
 Delta R.T. 0.000 min
 Lab File: BN027288.D
 Acq: 31 Aug 2023 00:14

Instrument :
 BNA_N
 ClientSampleId :
 RE120D1-20230816DL

Tgt Ion:136 Resp: 13315

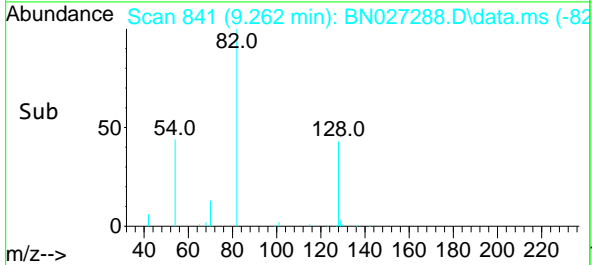
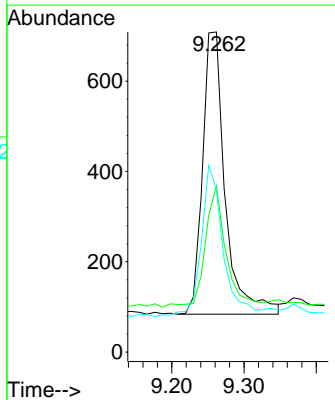
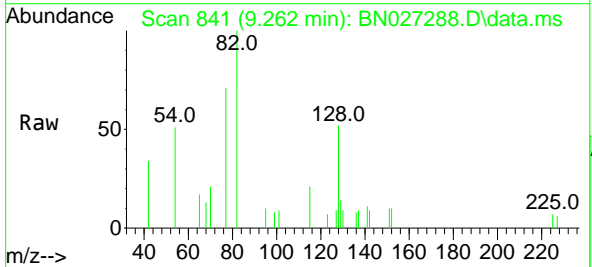
Ion	Ratio	Lower	Upper
136	100		
137	11.8	9.3	13.9
54	6.6	6.7	10.1#
68	6.4	6.1	9.1

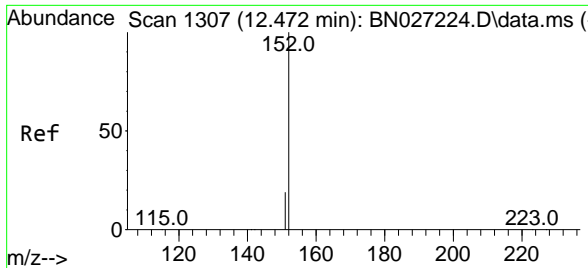


#8
 Nitrobenzene-d5
 Concen: 0.140 ng
 RT: 9.262 min Scan# 841
 Delta R.T. 0.000 min
 Lab File: BN027288.D
 Acq: 31 Aug 2023 00:14

Tgt Ion: 82 Resp: 1363

Ion	Ratio	Lower	Upper
82	100		
128	51.9	33.4	50.0#
54	50.6	37.7	56.5

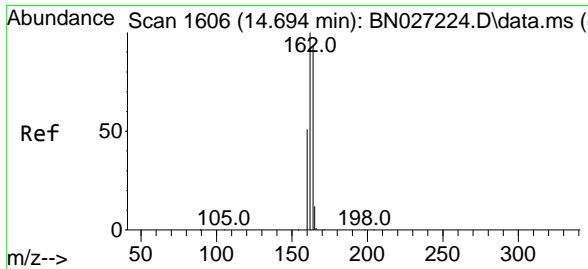
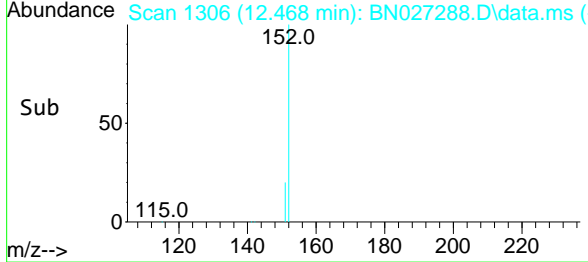
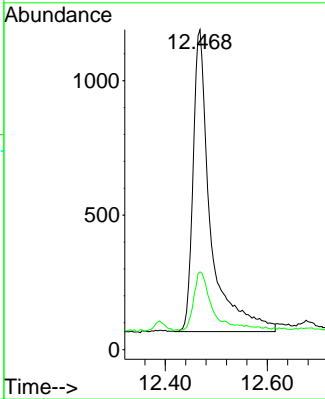
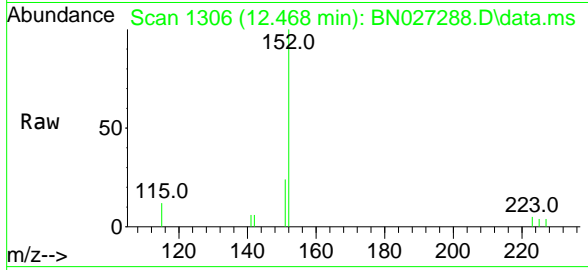




#11
 2-Methylnaphthalene-d10
 Concen: 0.136 ng
 RT: 12.468 min Scan# 11
 Delta R.T. -0.004 min
 Lab File: BN027288.D
 Acq: 31 Aug 2023 00:14

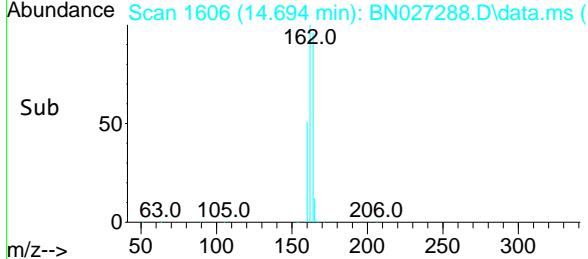
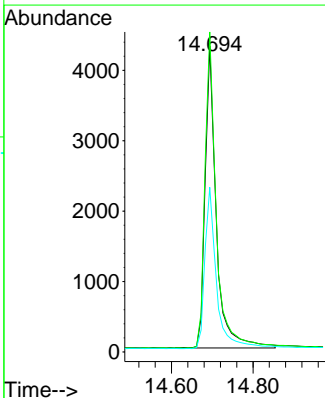
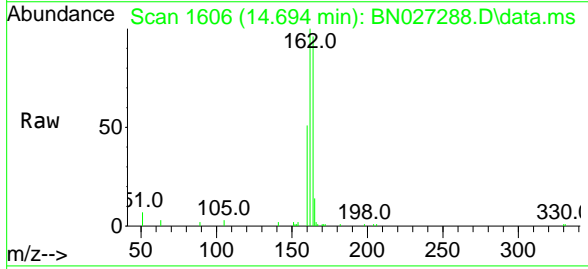
Instrument : BNA_N
 ClientSampleId : RE120D1-20230816DL

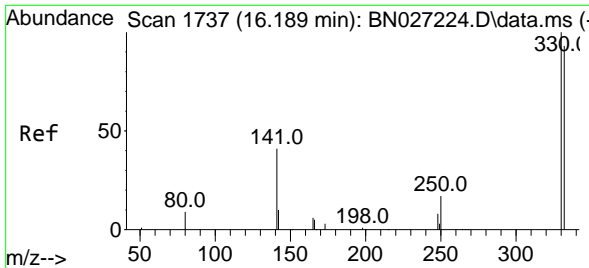
Tgt Ion:152 Resp: 2666
 Ion Ratio Lower Upper
 152 100
 151 20.7 16.6 25.0



#13
 Acenaphthene-d10
 Concen: 0.400 ng
 RT: 14.694 min Scan# 1606
 Delta R.T. -0.000 min
 Lab File: BN027288.D
 Acq: 31 Aug 2023 00:14

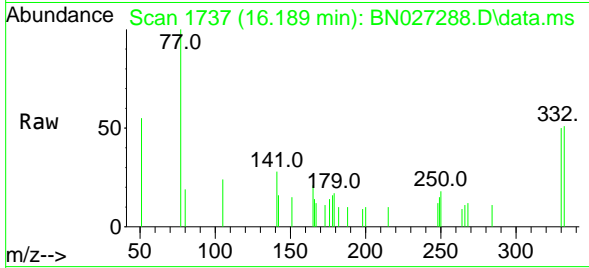
Tgt Ion:164 Resp: 8193
 Ion Ratio Lower Upper
 164 100
 162 104.6 85.8 128.8
 160 53.8 44.2 66.2



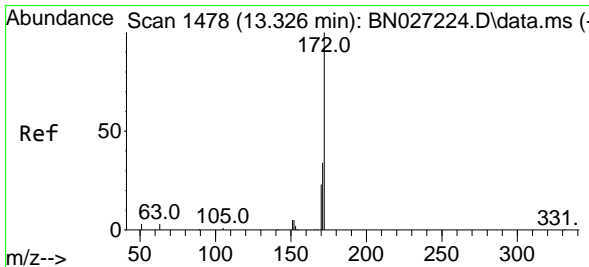
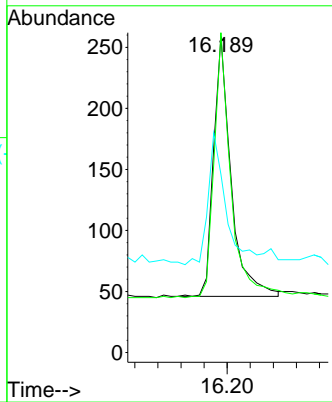
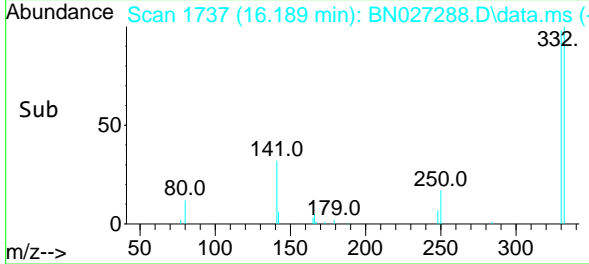


#14
 2,4,6-Tribromophenol
 Concen: 0.148 ng
 RT: 16.189 min Scan# 11
 Delta R.T. -0.000 min
 Lab File: BN027288.D
 Acq: 31 Aug 2023 00:14

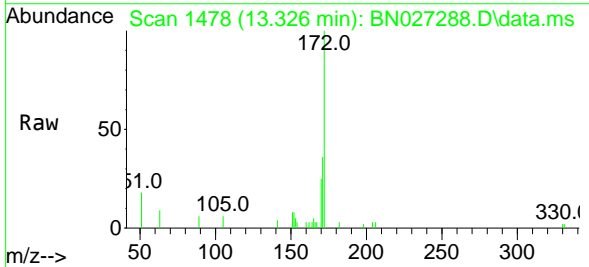
Instrument :
 BNA_N
 ClientSampleId :
 RE120D1-20230816DL



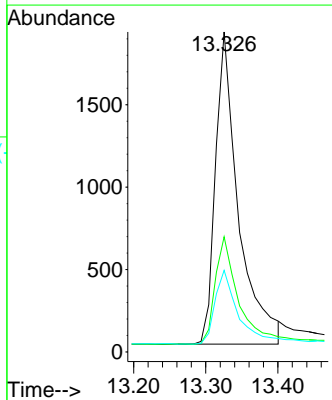
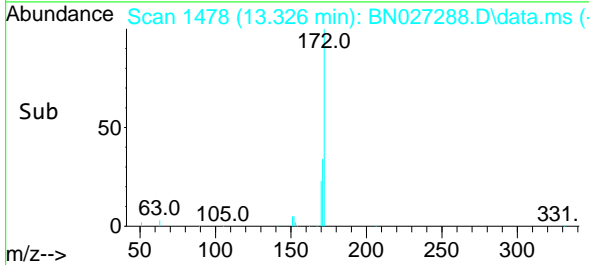
Tgt Ion:330 Resp: 448
 Ion Ratio Lower Upper
 330 100
 332 97.3 75.2 112.8
 141 55.6 36.2 54.4#

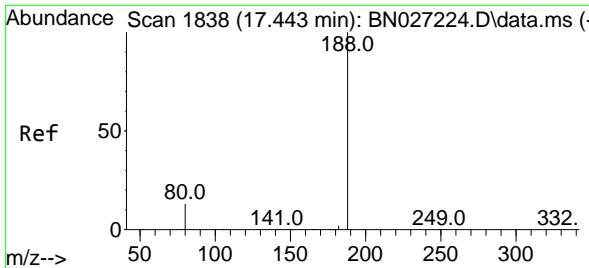


#15
 2-Fluorobiphenyl
 Concen: 0.134 ng
 RT: 13.326 min Scan# 1478
 Delta R.T. 0.000 min
 Lab File: BN027288.D
 Acq: 31 Aug 2023 00:14



Tgt Ion:172 Resp: 4185
 Ion Ratio Lower Upper
 172 100
 171 36.0 27.8 41.8
 170 25.5 19.3 28.9

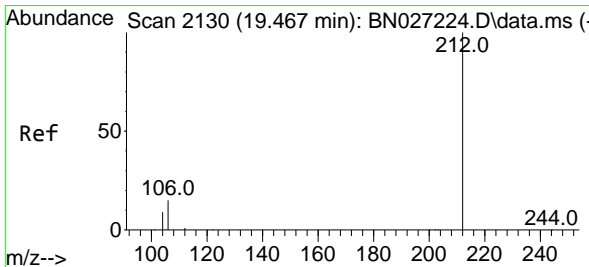
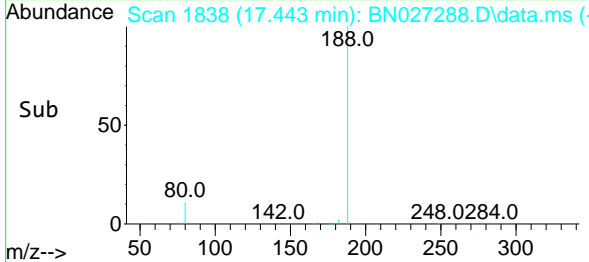
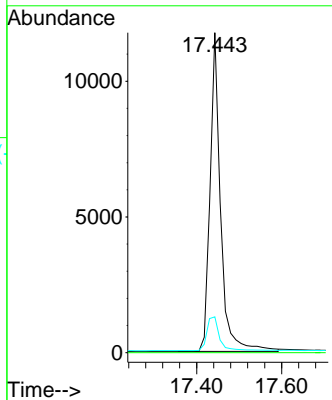
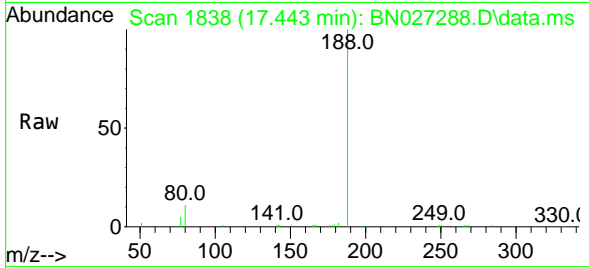




#19
 Phenanthrene-d10
 Concen: 0.400 ng
 RT: 17.443 min Scan# 11
 Delta R.T. -0.000 min
 Lab File: BN027288.D
 Acq: 31 Aug 2023 00:14

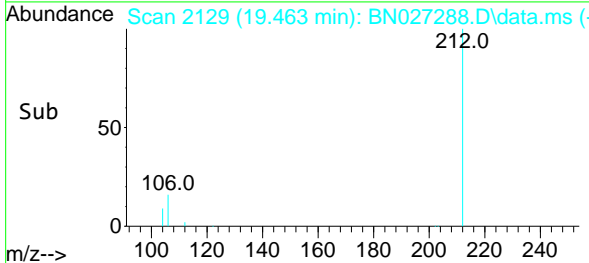
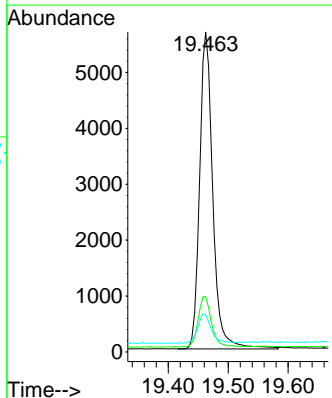
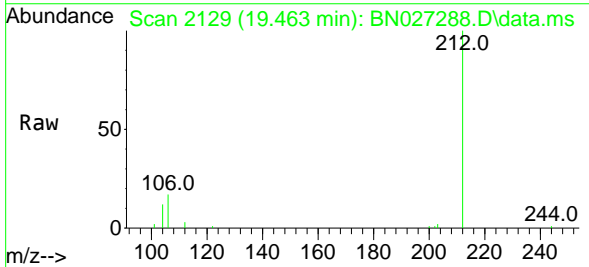
Instrument :
 BNA_N
 ClientSampleId :
 RE120D1-20230816DL

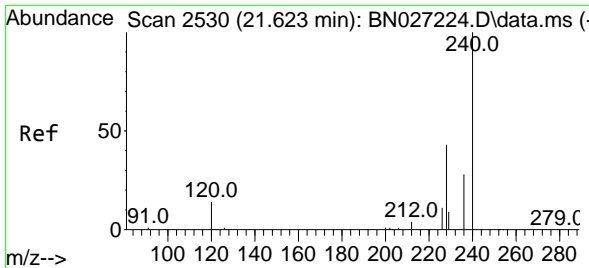
Tgt Ion:188 Resp: 20148
 Ion Ratio Lower Upper
 188 100
 94 0.0 0.0 0.0
 80 11.2 11.0 16.6



#27
 Fluoranthene-d10
 Concen: 0.172 ng
 RT: 19.463 min Scan# 2129
 Delta R.T. -0.005 min
 Lab File: BN027288.D
 Acq: 31 Aug 2023 00:14

Tgt Ion:212 Resp: 8639
 Ion Ratio Lower Upper
 212 100
 106 16.1 12.1 18.1
 104 9.9 6.9 10.3



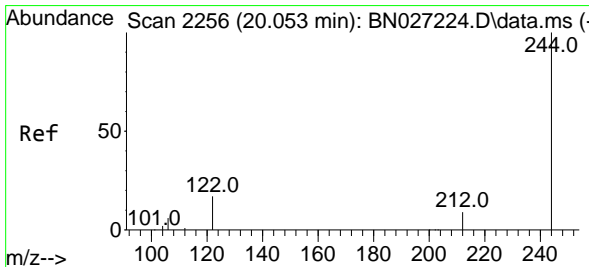
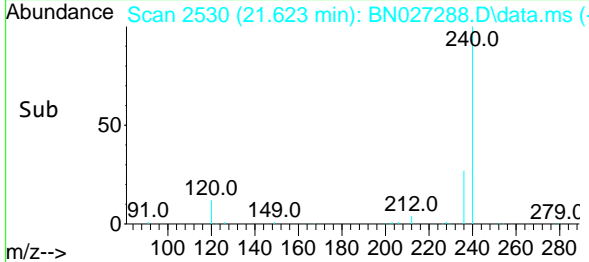
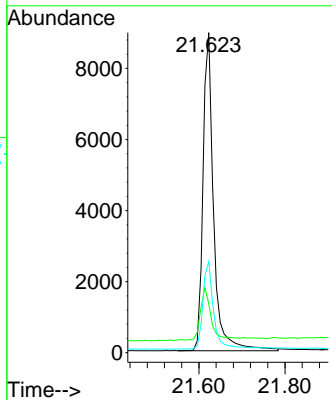
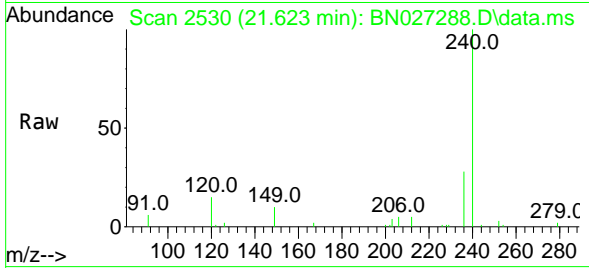


#29
 Chrysene-d12
 Concen: 0.400 ng
 RT: 21.623 min Scan# 21
 Delta R.T. -0.000 min
 Lab File: BN027288.D
 Acq: 31 Aug 2023 00:14

Instrument :
 BNA_N
 ClientSampleId :
 RE120D1-20230816DL

Tgt Ion:240 Resp: 15364

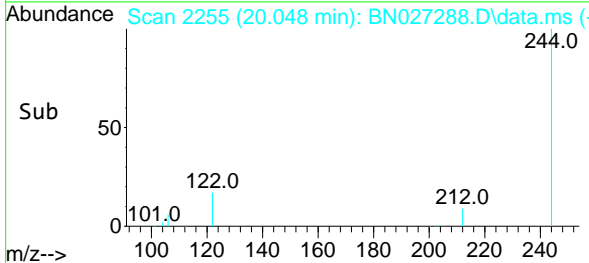
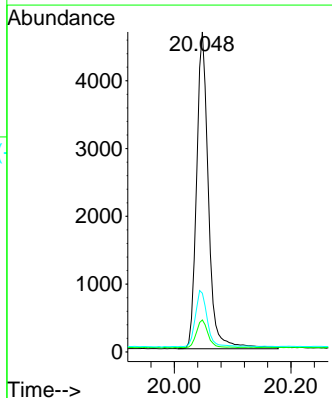
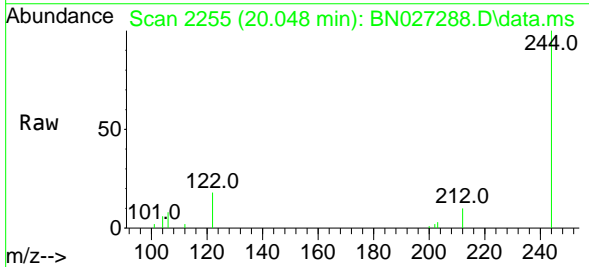
Ion	Ratio	Lower	Upper
240	100		
120	15.4	14.2	21.4
236	28.4	22.9	34.3

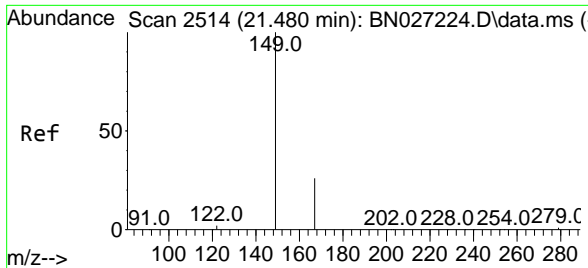


#31
 Terphenyl-d14
 Concen: 0.214 ng
 RT: 20.048 min Scan# 2255
 Delta R.T. -0.005 min
 Lab File: BN027288.D
 Acq: 31 Aug 2023 00:14

Tgt Ion:244 Resp: 6607

Ion	Ratio	Lower	Upper
244	100		
212	10.0	7.5	11.3
122	18.3	14.0	21.0

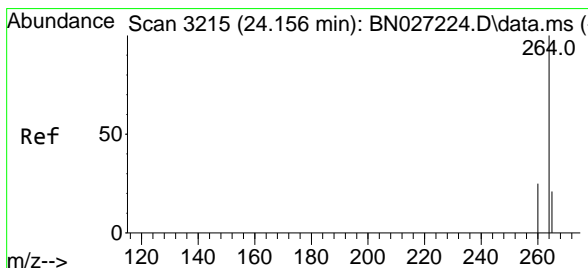
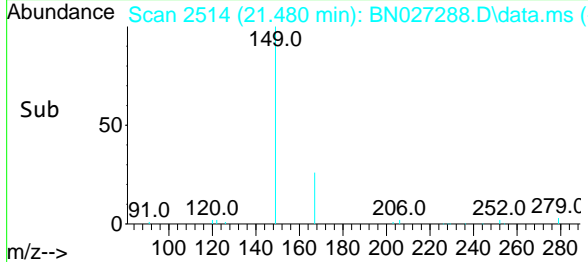
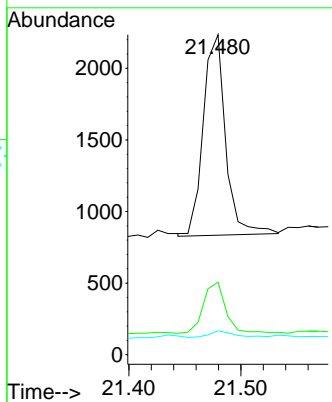
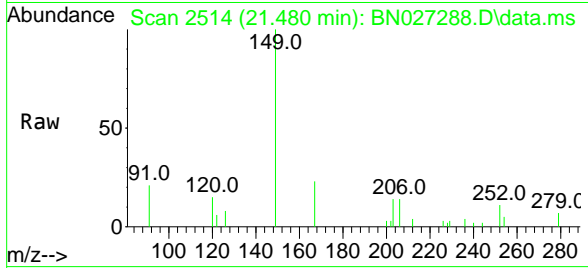




#34
 Bis(2-ethylhexyl)phthalate
 Concen: 0.077 ng
 RT: 21.480 min Scan# 2149
 Delta R.T. -0.000 min
 Lab File: BN027288.D
 Acq: 31 Aug 2023 00:14

Instrument : BNA_N
 ClientSampleId : RE120D1-20230816DL

Tgt Ion	Resp	Lower	Upper
149	100		
167	25.9	22.1	33.1
279	3.6	2.7	4.1



#35
 Perylene-d12
 Concen: 0.400 ng
 RT: 24.148 min Scan# 3212
 Delta R.T. -0.009 min
 Lab File: BN027288.D
 Acq: 31 Aug 2023 00:14

Tgt Ion	Resp	Lower	Upper
264	100		
260	26.8	20.7	31.1
265	78.1	53.3	79.9

