

Data Path : Z:\SVOASRV\HPCHEM1\BNA N\DATA\BN090518\
 Data File : BN002612.D
 Acq On : 06 Sep 2018 13:41
 Operator : JU/SJ
 Sample : J4688-09DL 5X
 Misc :
 ALS Vial : 30 Sample Multiplier: 1

Instrument :
 BNA_N
 ClientSampled :
 A3YY8DL

Manual Integrations
 APPROVED

Sohil
 9/6/2018 4:30:06 PM

Quant Time: Sep 06 14:53:48 2018
 Quant Method : Z:\SVOASRV\HPCHEM1\BNA_N\METHODS\SOM-EPA-BN081318MA.M
 Quant Title : SVOA CALIBRATION
 QLast Update : Thu Sep 06 06:54:57 2018
 Response via : Initial Calibration

Internal Standards	R.T.	QIon	Response	Conc	Units	Dev(Min)
1) 1,4-Dichlorobenzene-d4	7.66	152	213887	20.00	ng/ul	0.00
18) Naphthalene-d8	10.43	136	974816	20.00	ng/ul	0.00
35) Acenaphthene-d10	14.29	164	567793	20.00	ng/ul	0.00
61) Phenanthrene-d10	17.05	188	1256746	20.00	ng/ul	0.00
77) Chrysene-d12	21.25	240	1087267	20.00	ng/ul	0.00
85) Perylene-d12	23.47	264	903126	20.00	ng/ul	0.02

System Monitoring Compounds

3) 1,4-Dioxane-d8	3.23	96	2482	0.55	ng/uL	0.00
5) Phenol-d5	6.85	99	60277	3.07	ng/ul	0.00
7) Bis-(2-Chloroethyl)ether-d	7.00	67	41711	3.39	ng/ul	0.00
9) 2-Chlorophenol-d4	7.20	132	51312	3.44	ng/ul	0.00
13) 4-Methylphenol-d8	8.37	113	51196	3.27	ng/ul	0.00
19) Nitrobenzene-d5	8.80	128	25275	3.26	ng/ul	0.00
22) 2-Nitrophenol-d4	9.52	143	25454	3.12	ng/ul	0.00
26) 2,4-Dichlorophenol-d3	10.06	165	47831	3.19	ng/ul	0.00
29) 4-Chloroaniline-d4	10.57	131	43477	2.68	ng/ul	0.00
43) Dimethylphthalate-d6	13.70	166	172052	3.66	ng/ul	0.00
46) Acenaphthylene-d8	13.98	160	215495	3.73	ng/ul	0.00
51) 4-Nitrophenol-d4	14.57	143	1119	0.13	ng/ul	0.05
57) Fluorene-d10	15.29	176	160308	3.93	ng/ul	0.00
62) 4,6-Dinitro-2-methylphenol	15.44	200	478	0.06	ng/ul	0.01
70) Anthracene-d10	17.14	188	239964	4.00	ng/ul	0.00
78) Pyrene-d10	19.45	212	251905	4.84	ng/ul	0.00
89) Benzo(a)pyrene-d12	23.33	264	190172	4.03	ng/ul	0.00

Target Compounds

Target Compounds	R.T.	QIon	Response	Conc	Units	Ovalue
44) Dimethylphthalate	13.75	163	53116	1.151	ng/ul	99
49) Acenaphthene	14.36	153	47171	1.216	ng/ul	97
69) Phenanthrene	17.09	178	786089	11.346	ng/ul	99
71) Anthracene	17.17	178	157584	2.243	ng/ul	98
76) Fluoranthene	19.11	202	1291222	16.375	ng/ul	100
79) Pyrene	19.47	202	1897227	28.939	ng/ul	99
82) Benzo(a)anthracene	21.23	228	658401	9.884	ng/ul	98
83) Bis(2-ethylhexyl)phthalate	21.17	149	42629	1.023	ng/ul#	96
84) Chrysene	21.29	228	746245	11.837	ng/ul	98
87) Benzo(b)fluoranthene	22.82	252	755782m	13.961	ng/ul	
88) Benzo(k)fluoranthene	22.84	252	227712m	4.465	ng/ul	
90) Benzo(a)pyrene	23.37	252	578755	11.223	ng/ul	98
91) Indeno(1,2,3-cd)pyrene	25.69	276	344718	5.619	ng/ul#	94
92) Dibenzo(a,h)anthracene	25.69	278	93873	1.830	ng/ul#	93
93) Benzo(g,h,i)perylene	26.36	276	337355	6.590	ng/ul	98

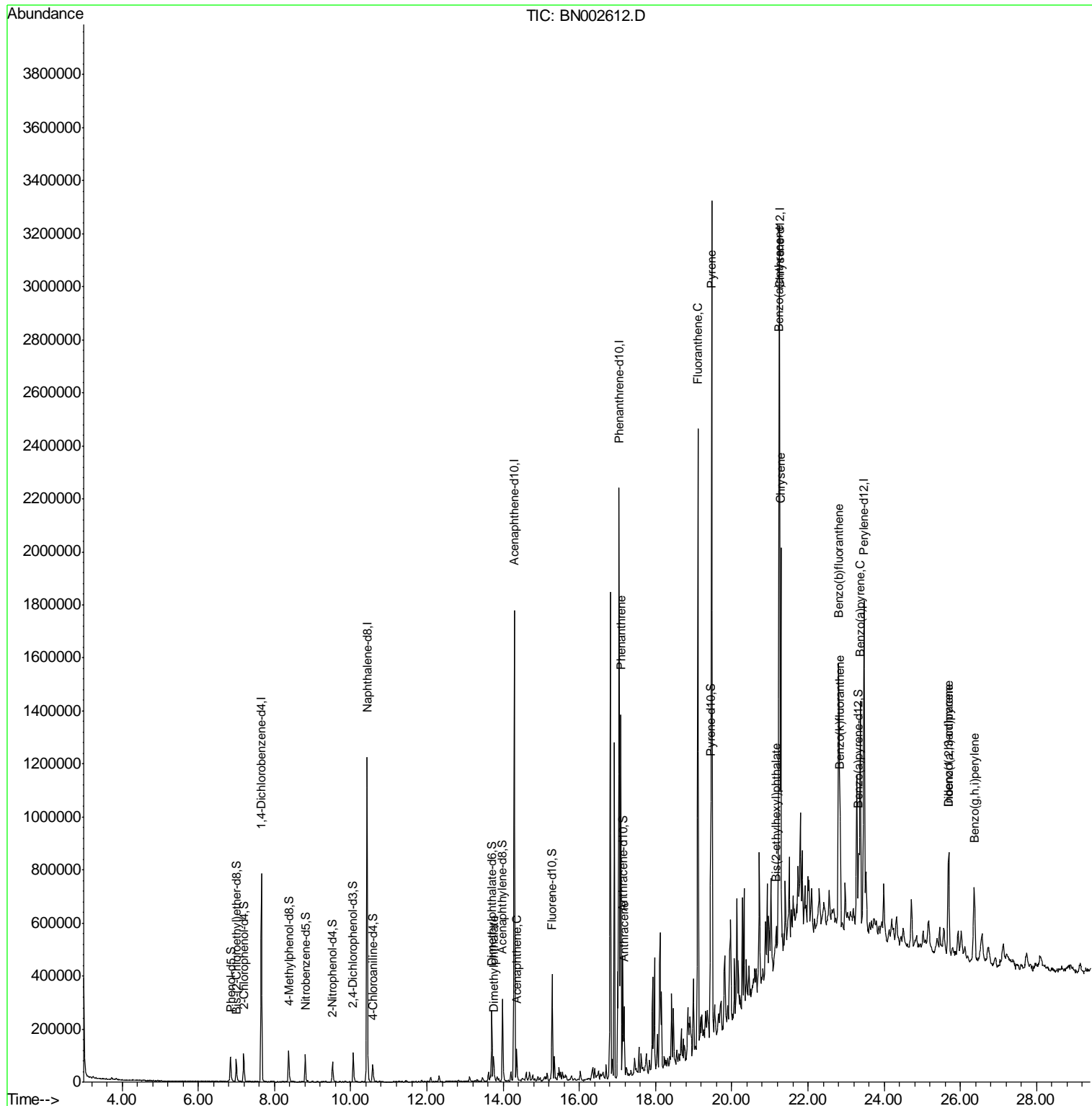
(#) = qualifier out of range (m) = manual integration (+) = signals summed

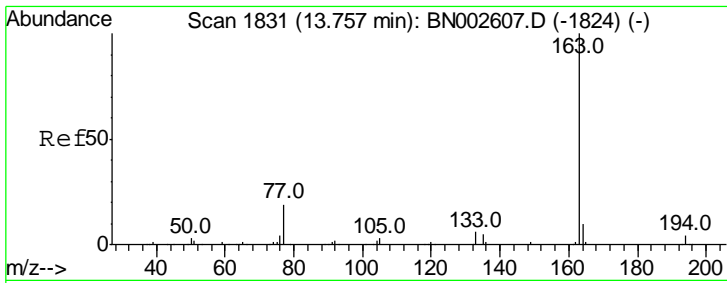
Data Path : Z:\SVOASRV\HPCHEM1\BNA N\DATA\BN090518\
 Data File : BN002612.D
 Acq On : 06 Sep 2018 13:41
 Operator : JU/SJ
 Sample : J4688-09DL 5X
 Misc :
 ALS Vial : 30 Sample Multiplier: 1

Instrument :
 BNA_N
 Client Sampled :
 A3YY8DL

Manual Integrations
APPROVED
 Sohil
 9/6/2018 4:30:06 PM

Quant Time: Sep 06 14:53:48 2018
 Quant Method : Z:\SVOASRV\HPCHEM1\BNA_N\METHODS\SOM-EPA-BN081318MA.M
 Quant Title : SVOA CALIBRATION
 QLast Update : Thu Sep 06 06:54:57 2018
 Response via : Initial Calibration





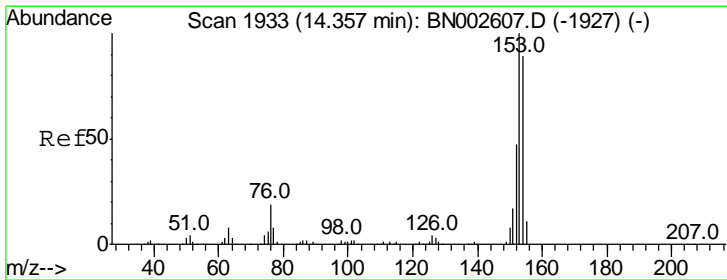
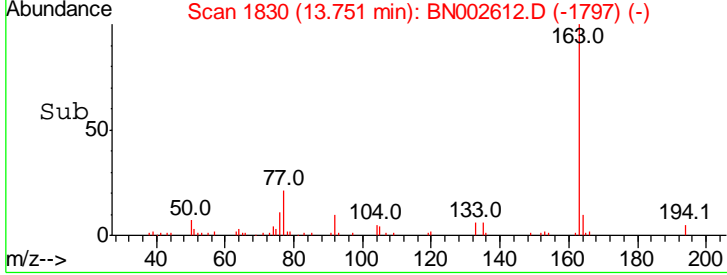
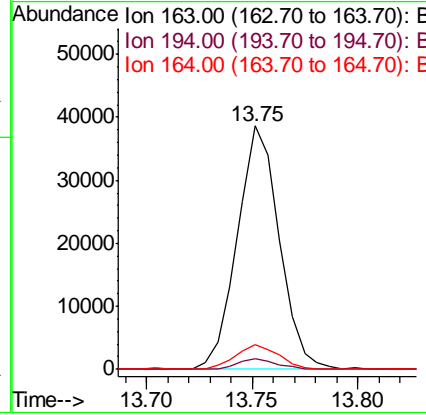
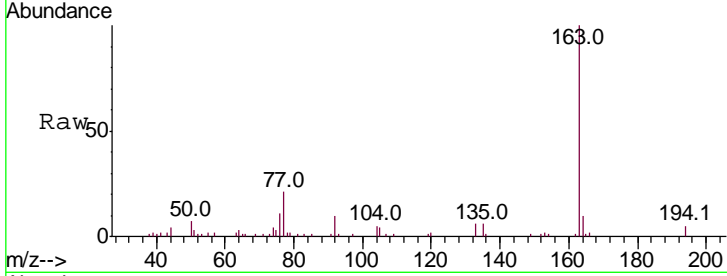
#44
 Dimethylphthalate
 Concen: 1.151 ng/ul
 RT: 13.75 min Scan# 1830
 Delta R.T. -0.01 min
 Lab File: BN002612.D
 Acq: 06 Sep 2018 13:41

Instrument :
 BNA_N
Client Sampled :
 A3YY8DL

Tgt Ion	Resp	Lower	Upper
163	100		
194	4.6	3.2	4.8
164	10.1	7.8	11.8

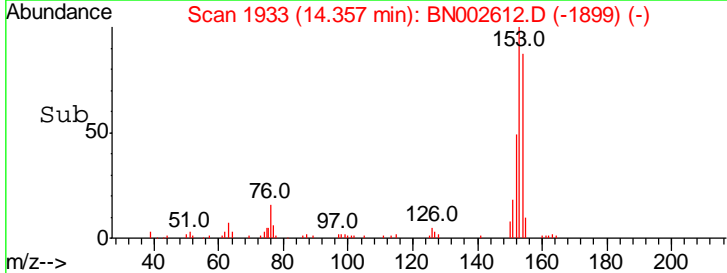
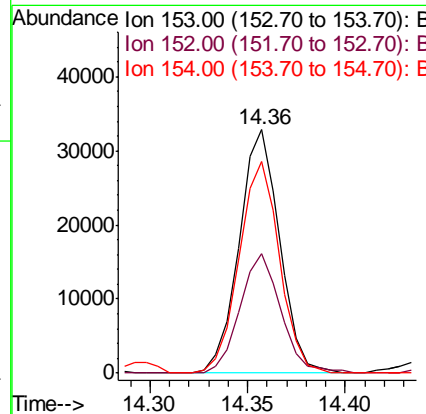
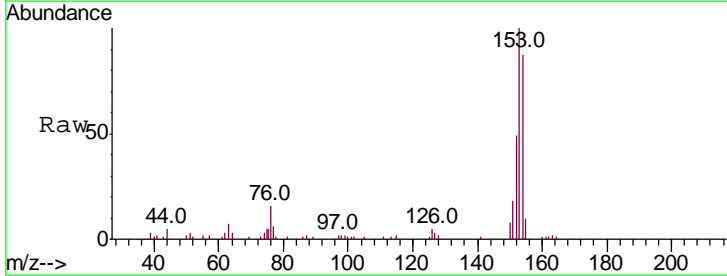
Manual Integrations
APPROVED

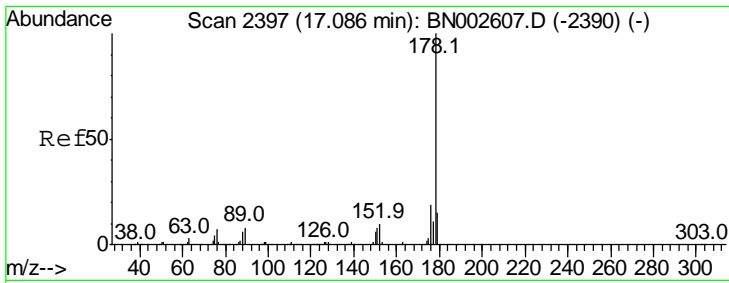
Sohil
 9/6/2018 4:30:06 PM



#49
 Acenaphthene
 Concen: 1.216 ng/ul
 RT: 14.36 min Scan# 1933
 Delta R.T. -0.00 min
 Lab File: BN002612.D
 Acq: 06 Sep 2018 13:41

Tgt Ion	Resp	Lower	Upper
153	100		
152	48.9	38.3	57.5
154	86.8	71.8	107.8





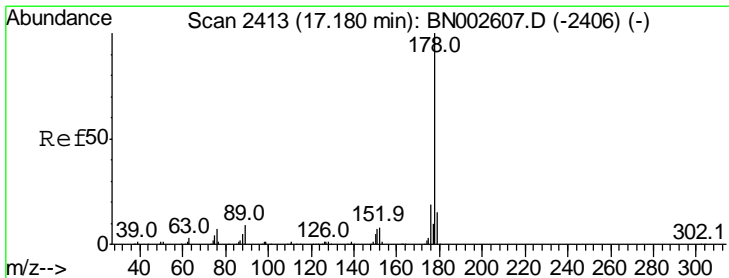
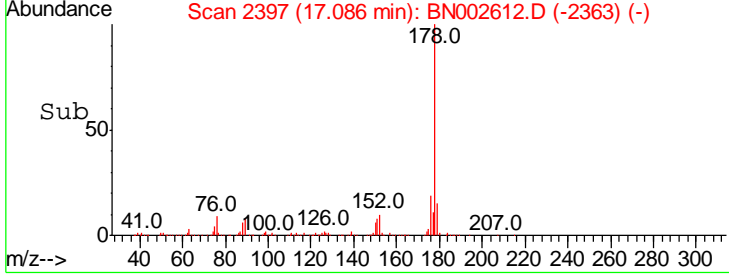
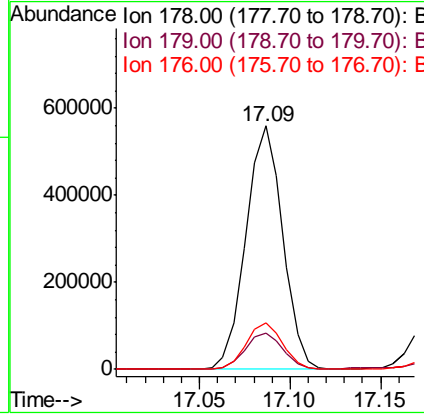
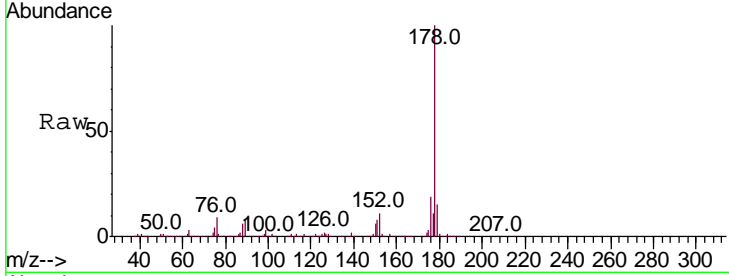
#69
 Phenanthrene
 Concen: 11.346 ng/ul
 RT: 17.09 min Scan# 2397
 Delta R.T. -0.00 min
 Lab File: BN002612.D
 Acq: 06 Sep 2018 13:41

Instrument :
 BNA_N
ClientSampled :
 A3YY8DL

Tgt Ion	Resp	Lower	Upper
178	100		
179	15.1	12.2	18.4
176	18.9	15.6	23.4

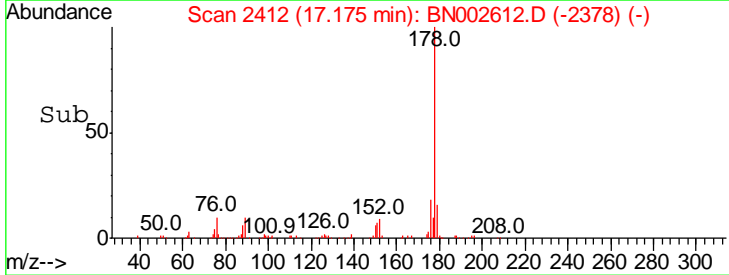
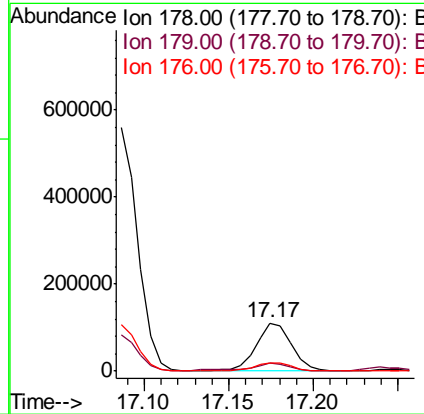
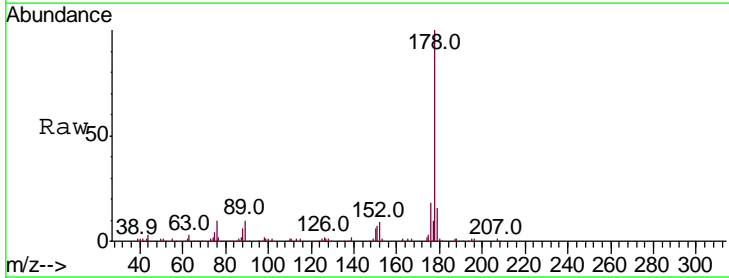
Manual Integrations
APPROVED

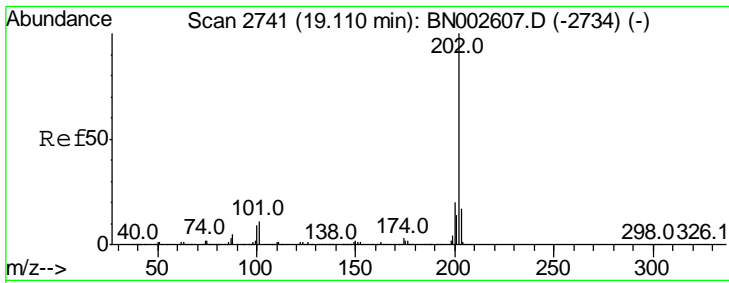
Sohil
 9/6/2018 4:30:06 PM



#71
 Anthracene
 Concen: 2.243 ng/ul
 RT: 17.17 min Scan# 2412
 Delta R.T. -0.00 min
 Lab File: BN002612.D
 Acq: 06 Sep 2018 13:41

Tgt Ion	Resp	Lower	Upper
178	100		
179	15.9	12.1	18.1
176	17.8	14.8	22.2





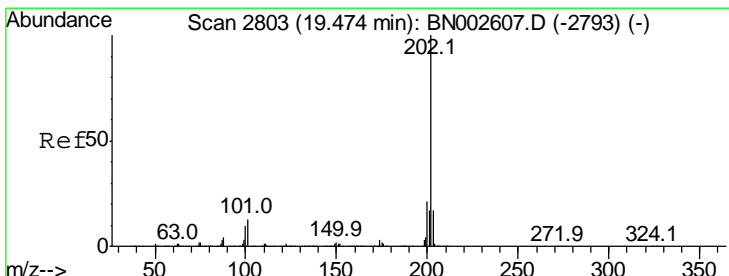
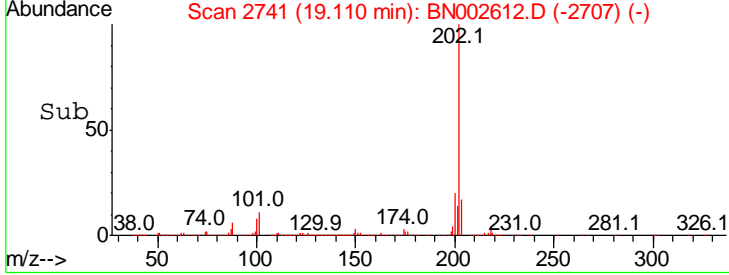
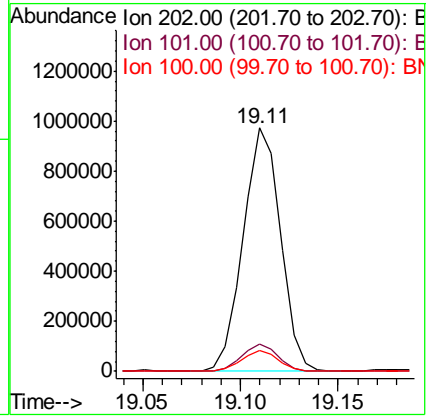
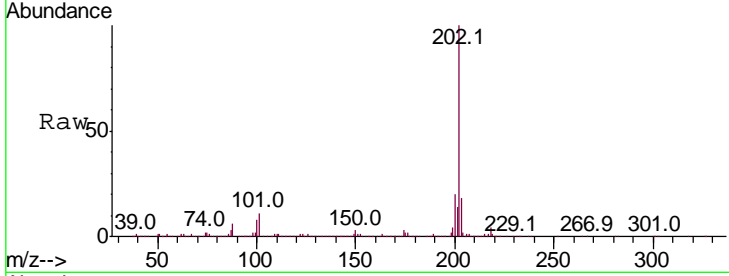
#76
 Fluoranthene
 Concen: 16.375 ng/ul
 RT: 19.11 min Scan# 2741
 Delta R.T. -0.00 min
 Lab File: BN002612.D
 Acq: 06 Sep 2018 13:41

Instrument :
 BNA_N
ClientSampled :
 A3YY8DL

Tgt Ion	Ratio	Lower	Upper
202	100		
101	11.0	8.8	13.2
100	8.3	6.6	9.8

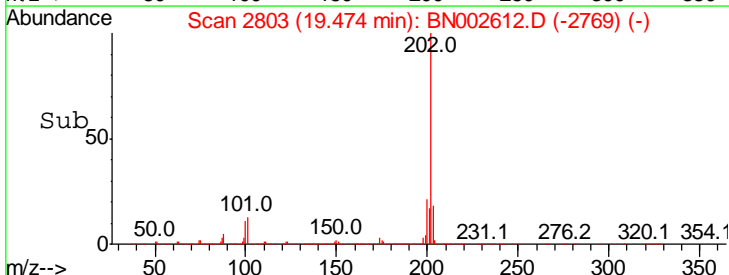
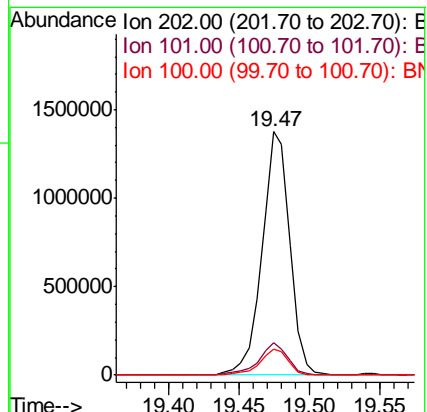
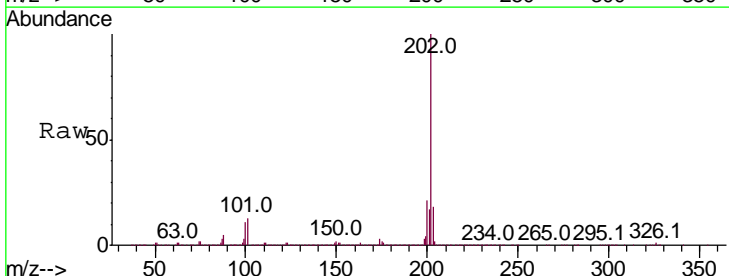
Manual Integrations
APPROVED

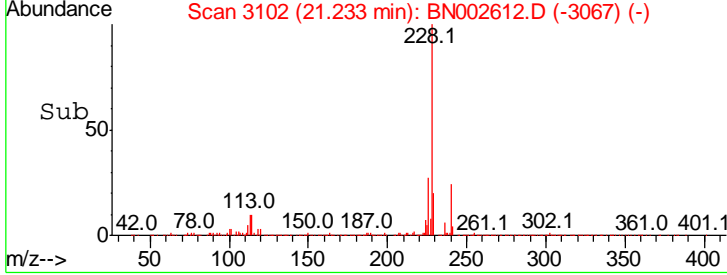
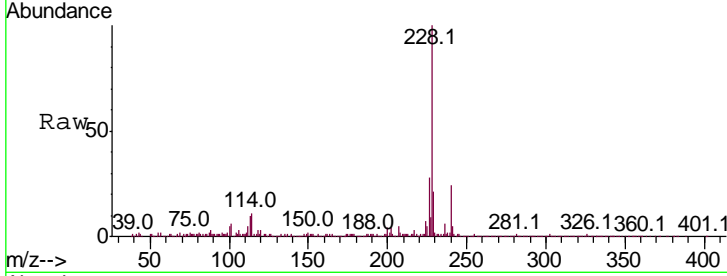
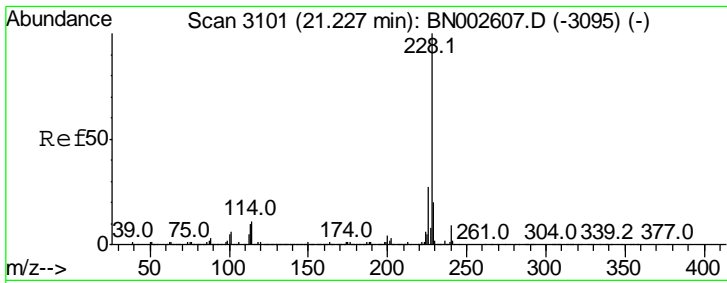
Sohil
 9/6/2018 4:30:06 PM



#79
 Pyrene
 Concen: 28.939 ng/ul
 RT: 19.47 min Scan# 2803
 Delta R.T. -0.00 min
 Lab File: BN002612.D
 Acq: 06 Sep 2018 13:41

Tgt Ion	Ratio	Lower	Upper
202	100		
101	13.2	10.2	15.2
100	10.9	8.5	12.7



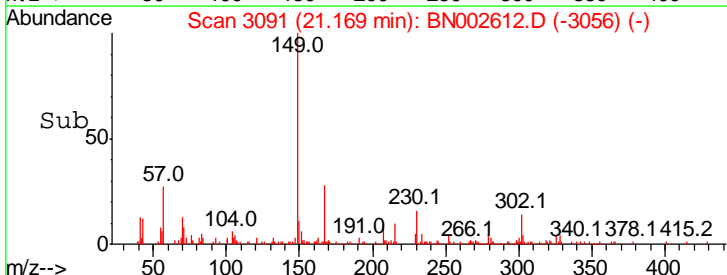
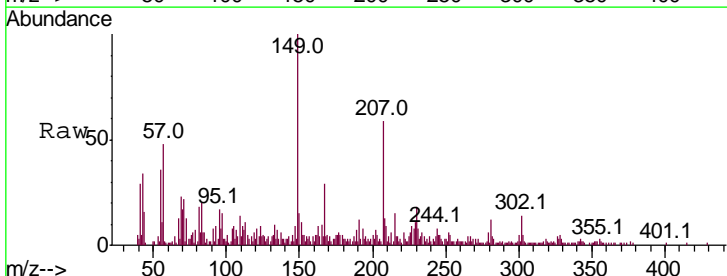
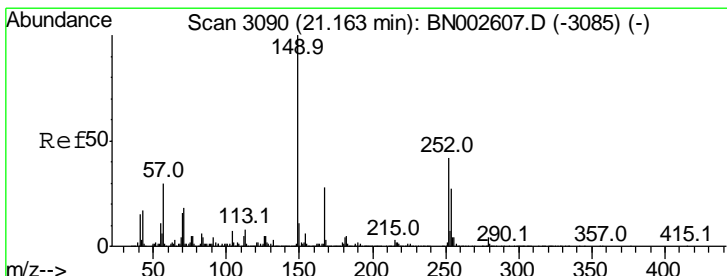
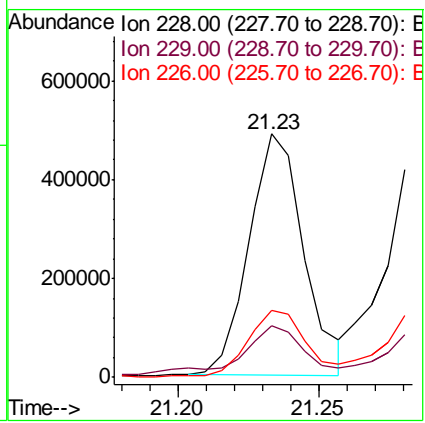


#82
 Benzo(a)anthracene
 Concen: 9.884 ng/ul
 RT: 21.23 min Scan# 3102
 Delta R.T. 0.01 min
 Lab File: BN002612.D
 Acq: 06 Sep 2018 13:41

Tgt Ion	Resp	Lower	Upper
228	100		
229	21.2	15.7	23.5
226	27.8	21.8	32.6

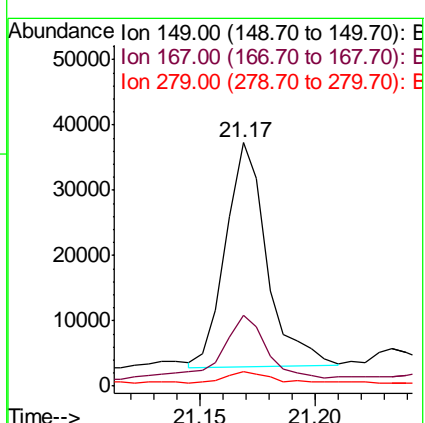
Instrument : BNA_N
 Client Sampled : A3YY8DL

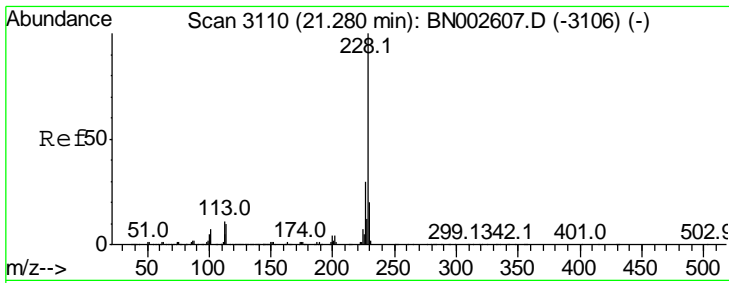
Manual Integrations APPROVED
 Sohil
 9/6/2018 4:30:06 PM



#83
 Bis(2-ethylhexyl)phthalate
 Concen: 1.023 ng/ul
 RT: 21.17 min Scan# 3091
 Delta R.T. 0.01 min
 Lab File: BN002612.D
 Acq: 06 Sep 2018 13:41

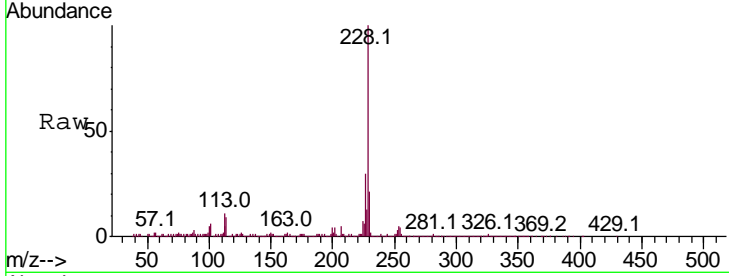
Tgt Ion	Resp	Lower	Upper
149	100		
167	29.1	21.6	32.4
279	5.8	3.0	4.4#





#84
 Chrysene
 Concen: 11.837 ng/ul
 RT: 21.29 min Scan# 3111
 Delta R.T. 0.01 min
 Lab File: BN002612.D
 Acq: 06 Sep 2018 13:41

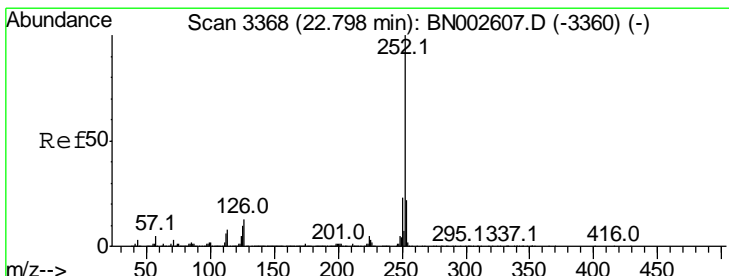
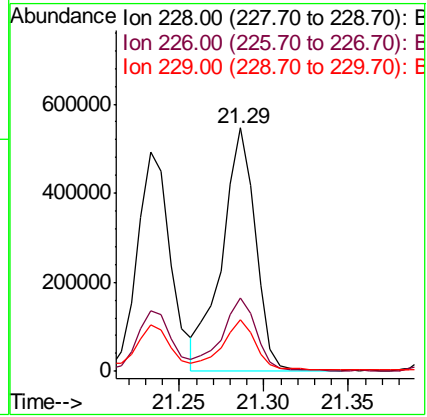
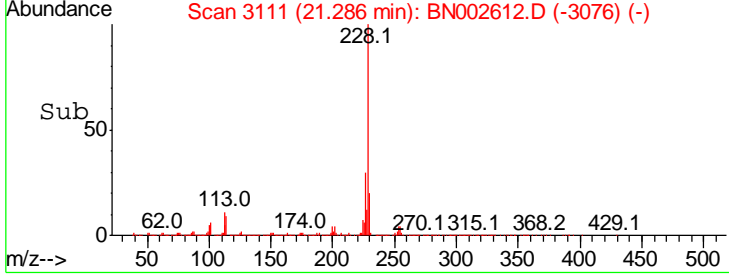
Instrument :
 BNA_N
ClientSampled :
 A3Y8DL



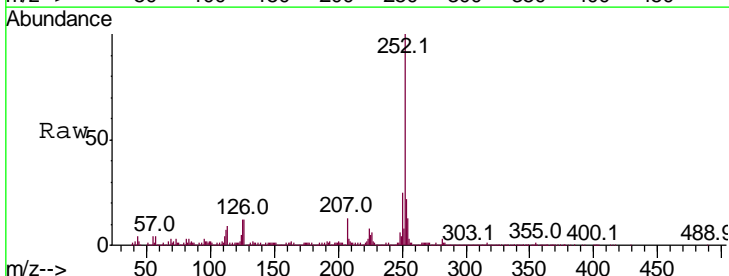
Tgt Ion: 228 Resp: 746245

Ion	Ratio	Lower	Upper
228	100		
226	30.3	24.0	36.0
229	21.0	15.6	23.4

Manual Integrations
APPROVED
 Sohil
 9/6/2018 4:30:06 PM

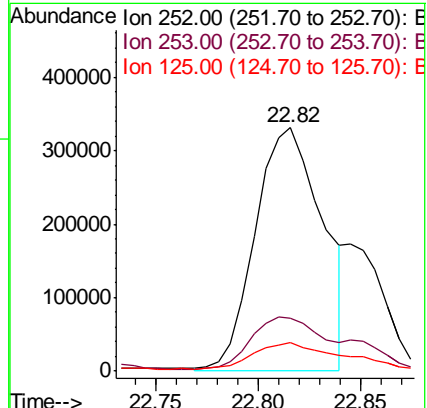
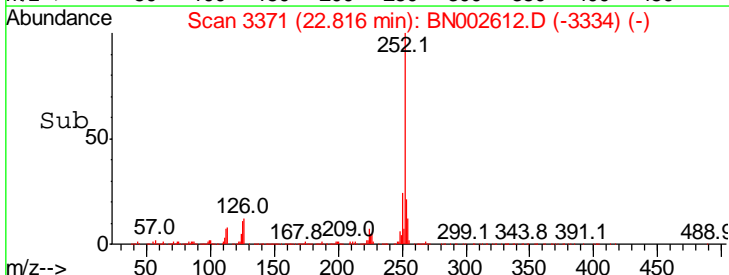


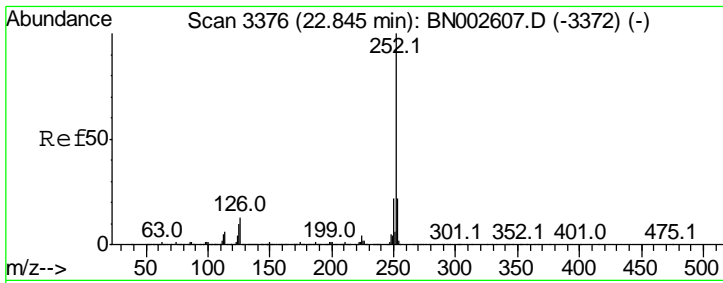
#87
 Benzo(b)fluoranthene
 Concen: 13.961 ng/ul m
 RT: 22.82 min Scan# 3371
 Delta R.T. 0.02 min
 Lab File: BN002612.D
 Acq: 06 Sep 2018 13:41



Tgt Ion: 252 Resp: 755782

Ion	Ratio	Lower	Upper
252	100		
253	21.9	17.5	26.3
125	11.5	8.5	12.7





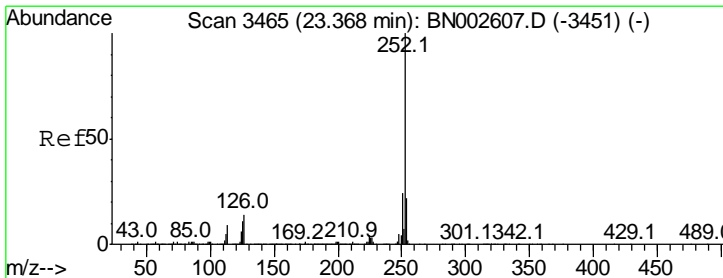
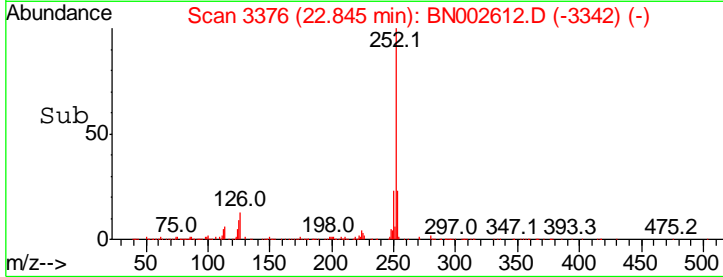
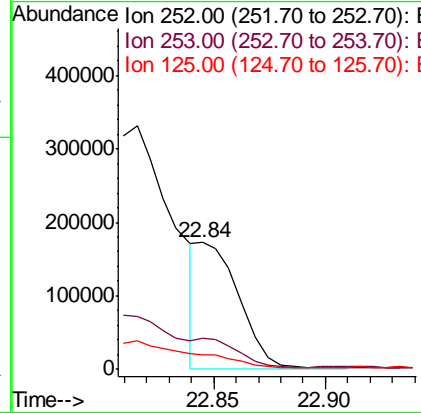
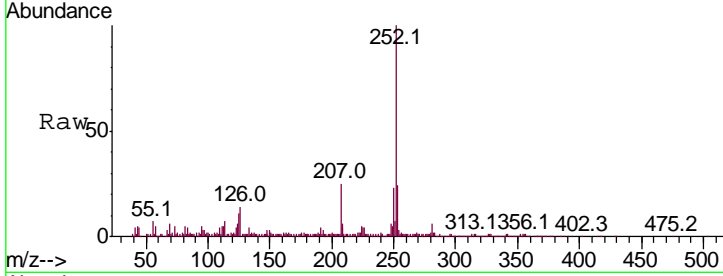
#88
 Benzo(k)fluoranthene
 Concen: 4.465 ng/ul m
 RT: 22.84 min Scan# 3376
 Delta R.T. -0.00 min
 Lab File: BN002612.D
 Acq: 06 Sep 2018 13:41

Instrument :
 BNA_N
 Client Sampled :
 A3YY8DL

Tgt Ion	Resp	Lower	Upper
252	100		
253	24.0	17.3	25.9
125	11.4	8.2	12.2

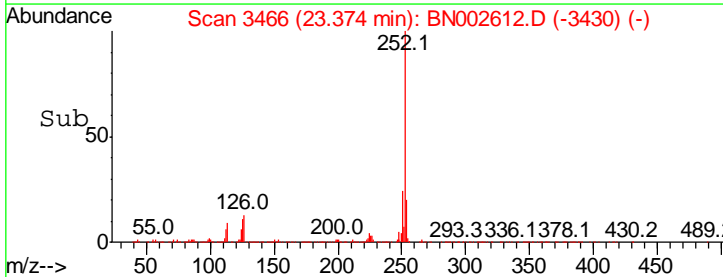
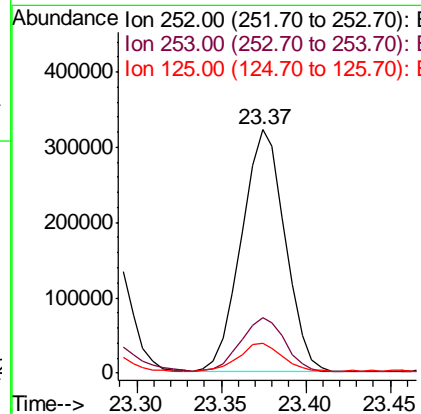
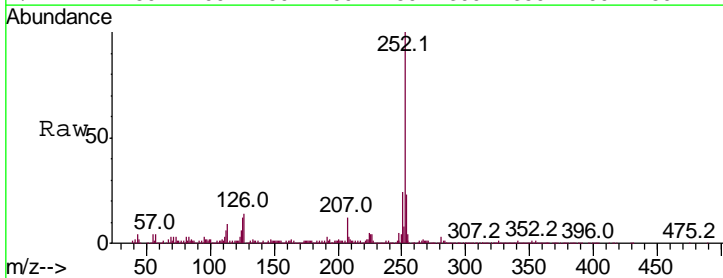
Manual Integrations
 APPROVED

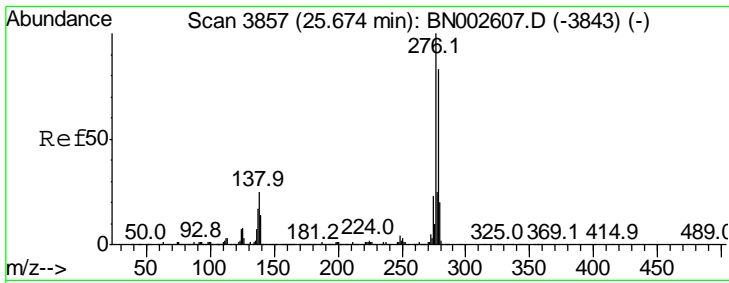
Sohil
 9/6/2018 4:30:06 PM



#90
 Benzo(a)pyrene
 Concen: 11.223 ng/ul
 RT: 23.37 min Scan# 3466
 Delta R.T. 0.01 min
 Lab File: BN002612.D
 Acq: 06 Sep 2018 13:41

Tgt Ion	Resp	Lower	Upper
252	100		
253	22.6	17.2	25.8
125	12.0	9.0	13.6



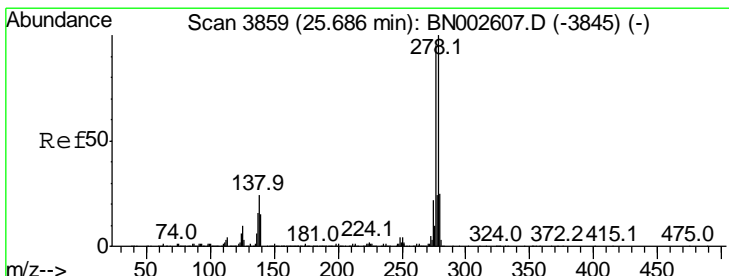
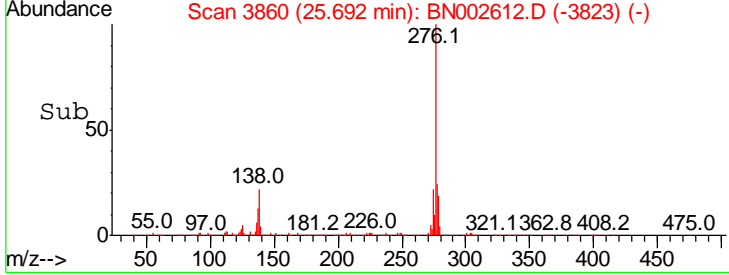
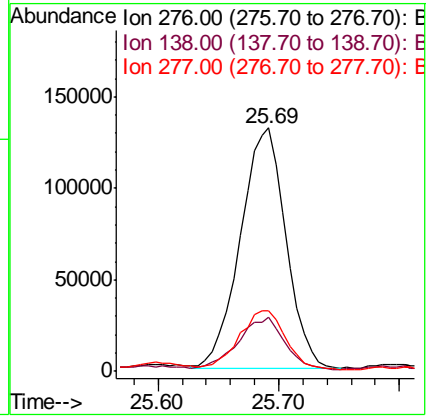
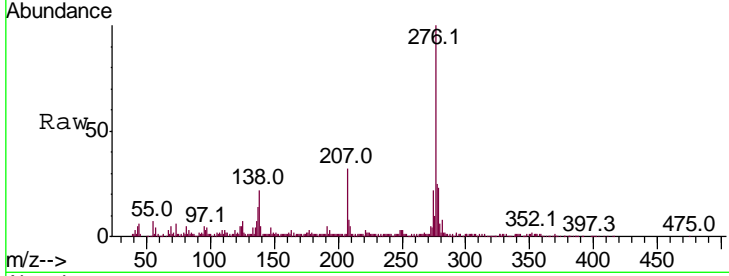


#91
 Indeno(1,2,3-cd)pyrene
 Concen: 5.619 ng/ul
 RT: 25.69 min Scan# 3860
 Delta R.T. 0.02 min
 Lab File: BN002612.D
 Acq: 06 Sep 2018 13:41

Instrument :
 BNA_N
Client Sampled :
 A3Y8DL

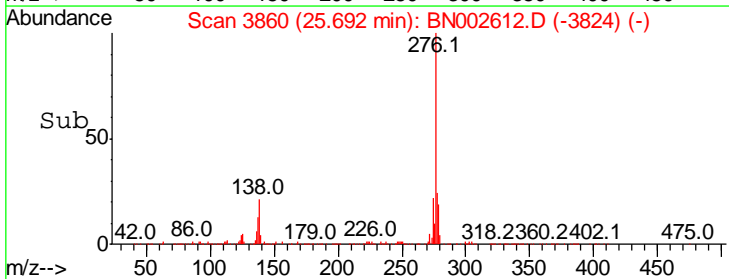
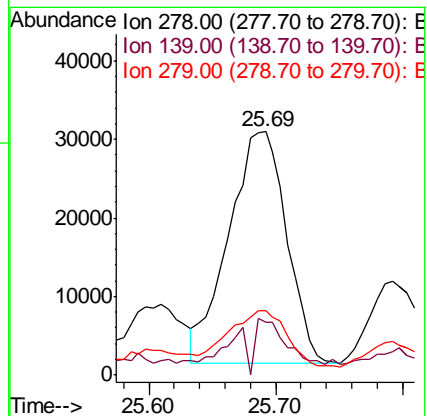
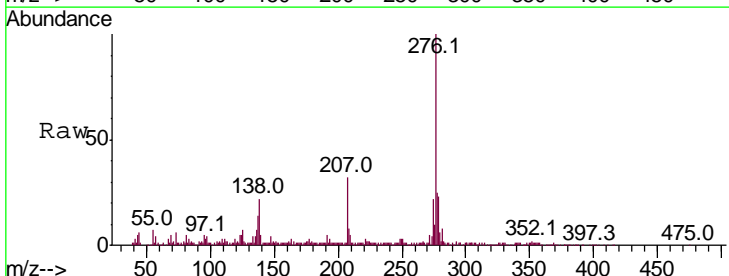
Tgt Ion	Resp	Lower	Upper
276	100		
138	22.0	22.3	33.5#
277	24.6	20.2	30.2

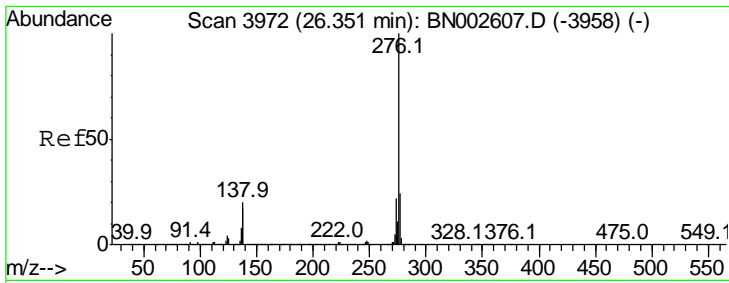
Manual Integrations
APPROVED
 Sohil
 9/6/2018 4:30:06 PM



#92
 Dibenzo(a,h)anthracene
 Concen: 1.830 ng/ul
 RT: 25.69 min Scan# 3860
 Delta R.T. 0.01 min
 Lab File: BN002612.D
 Acq: 06 Sep 2018 13:41

Tgt Ion	Resp	Lower	Upper
278	100		
139	21.6	13.9	20.9#
279	26.5	19.0	28.4





#93
 Benzo(a,h,i)perylene
 Concen: 6.590 ng/ul
 RT: 26.36 min Scan# 3974
 Delta R.T. 0.02 min
 Lab File: BN002612.D
 Acq: 06 Sep 2018 13:41

Instrument :
 BNA_N
Client Sampled :
 A3YY8DL

Tot Ion	Ratio	Lower	Upper
276	100		
138	21.5	18.9	28.3
277	24.0	19.2	28.8

Manual Integrations
APPROVED
 Sohil
 9/6/2018 4:30:06 PM

