

Data Path : Z:\svoasrv\HPCHEM1\BNA_N\Data\BN090921\
 Data File : BN016288.D
 Acq On : 10 Sep 2021 13:00
 Operator : CG/JU
 Sample : SSTDCCCO.4
 Misc :
 ALS Vial : 36 Sample Multiplier: 1

Instrument :
 BNA_N
 ClientSampled :
 SSTDCCCO.4

Quant Time: Sep 10 14:34:52 2021
 Quant Method : Z:\SVOASRV\HPCHEM1\BNA_N\METHODS\8270-SIM-BN090921.M
 Quant Title : ASP BNA STANDARDS FOR 5 POINT CALIBRATION
 QLast Update : Fri Sep 10 14:34:37 2021
 Response via : Initial Calibration

Compound	R.T.	QI on	Response	Conc	Units	Dev(Min)

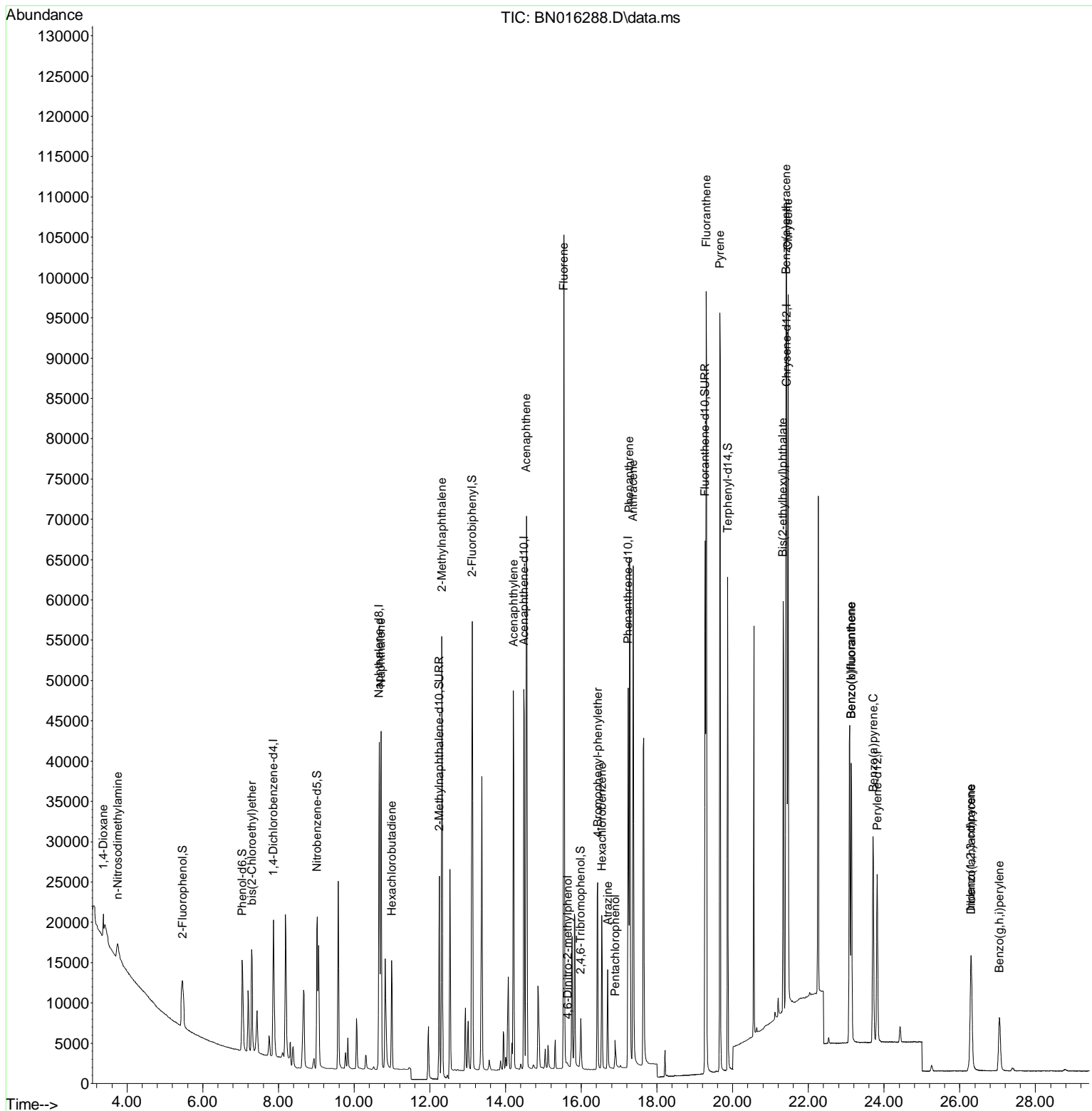
Internal Standards						
1) 1,4-Dichlorobenzene-d4	7.864	152	11387	0.400	ng	0.00
7) Naphthalene-d8	10.660	136	57249	0.400	ng	0.00
13) Acenaphthene-d10	14.484	164	32481	0.400	ng	0.00
19) Phenanthrene-d10	17.237	188	65651	0.400	ng	0.00
29) Chrysene-d12	21.429	240	56616	0.400	ng	0.00
35) Perylene-d12	23.816	264	30746	0.400	ng	# 0.00
System Monitoring Compounds						
4) 2-Fluorophenol	5.466	112	11806	0.407	ng	0.00
5) Phenol-d6	7.043	99	14692	0.404	ng	0.00
8) Nitrobenzene-d5	9.025	82	17960	0.390	ng	0.00
11) 2-Methylnaphthalene-d10	12.247	152	35832	0.401	ng	0.00
14) 2,4,6-Tribromophenol	15.982	330	5258	0.395	ng	0.00
15) 2-Fluorobiphenyl	13.114	172	51159	0.402	ng	0.00
27) Fluoranthene-d10	19.271	212	77825	0.403	ng	0.00
31) Terphenyl-d14	19.867	244	66480	0.468	ng	0.00
Target Compounds						
						Qvalue
2) 1,4-Dioxane	3.373	88	2164	0.536	ng	87
3) n-Nitrosodimethylamine	3.751	42	2972	0.355	ng	# 97
6) bis(2-Chloroethyl)ether	7.292	93	12466	0.416	ng	99
9) Naphthalene	10.711	128	61988	0.405	ng	100
10) Hexachlorobutadiene	10.990	225	12648	0.405	ng	# 100
12) 2-Methylnaphthalene	12.318	142	42340	0.411	ng	100
16) Acenaphthylene	14.205	152	57741	0.397	ng	100
17) Acenaphthene	14.548	154	37949	0.402	ng	100
18) Fluorene	15.537	166	47175	0.404	ng	100
20) 4,6-Dinitro-2-methylph...	15.639	198	362	0.340	ng	# 84
21) 4-Bromophenyl-phenyl ether	16.433	248	14159	0.403	ng	99
22) Hexachlorobenzene	16.543	284	16814	0.400	ng	99
23) Atrazine	16.701	200	10580	0.328	ng	98
24) Pentachlorophenol	16.896	266	2353	0.474	ng	97
25) Phenanthrene	17.273	178	76870	0.403	ng	99
26) Anthracene	17.370	178	70256	0.401	ng	100
28) Fluoranthene	19.301	202	91098	0.407	ng	100
30) Pyrene	19.664	202	91694	0.478	ng	100
32) Benzo(a)anthracene	21.408	228	77210	0.437	ng	99
33) Chrysene	21.461	228	75743	0.433	ng	99
34) Bis(2-ethylhexyl)phtha...	21.334	149	50896	0.468	ng	99
36) Indeno(1,2,3-cd)pyrene	26.295	276	20393	0.399	ng	100
37) Benzo(b)fluoranthene	23.135	252	50351	0.424	ng	96
38) Benzo(k)fluoranthene	23.135	252	48405	0.458	ng	96
39) Benzo(a)pyrene	23.710	252	38981	0.442	ng	# 88
40) Di benzo(a,h)anthracene	26.305	278	16386	0.419	ng	# 93
41) Benzo(g,h,i)perylene	27.048	276	16520	0.389	ng	95

(#) = qualifier out of range (m) = manual integration (+) = signals summed

Data Path : Z:\svoasrv\HPCHEM1\BNA_N\Data\BN090921\
 Data File : BN016288.D
 Acq On : 10 Sep 2021 13:00
 Operator : CG/JU
 Sample : SSTDCCCO.4
 Misc :
 ALS Vial : 36 Sample Multiplier: 1

Instrument :
 BNA_N
 Client Sampled :
 SSTDCCCO.4

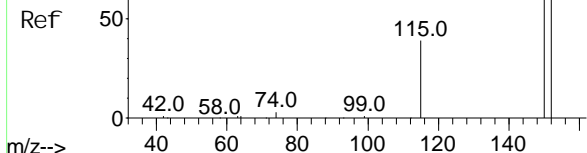
Quant Time: Sep 10 14:34:52 2021
 Quant Method : Z:\SVOASRV\HPCHEM1\BNA_N\METHODS\8270-SIM-BN090921.M
 Quant Title : ASP BNA STANDARDS FOR 5 POINT CALIBRATION
 QLast Update : Fri Sep 10 14:34:37 2021
 Response via : Initial Calibration



Abundance Scan 519 (7.864 min): BN016256.D\data.ms (-513) (#1)

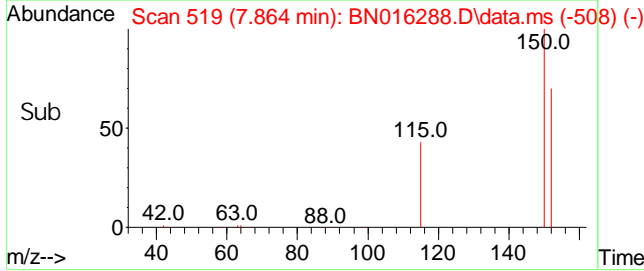
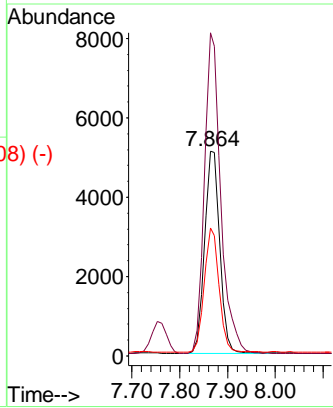
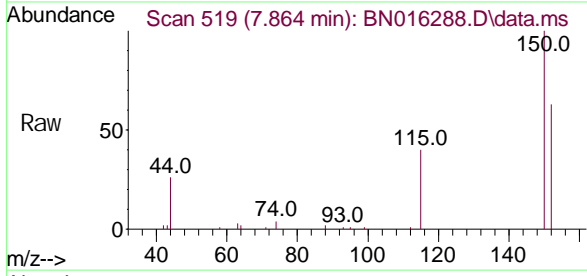
1, 4-Di chl orobenzene-d4
Concen: 0.400 ng
RT: 7.864 min Scan# 519
Del ta R. T. -0.000 min
Lab Fi le: BN016288.D
Acq: 10 Sep 2021 13:00

Instrument :
BNA_N
ClientSampled :
SSTDCCC0.4



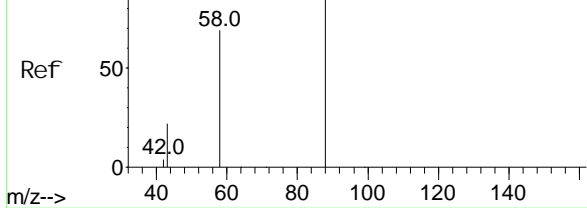
Tgt Ion: 152 Resp: 11387

Ion	Ratio	Lower	Upper
152	100		
150	157.7	125.6	188.4
115	62.6	50.2	75.2



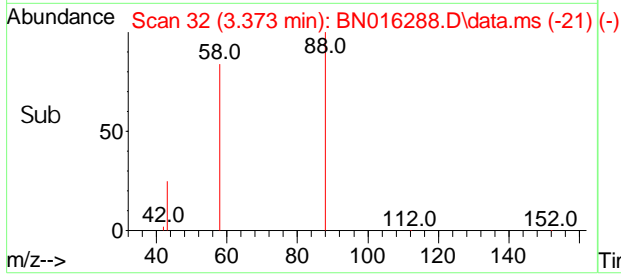
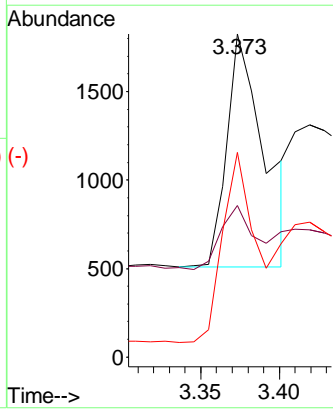
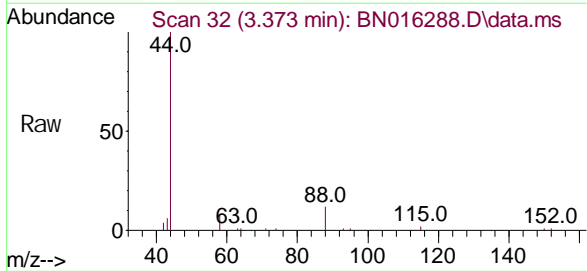
Abundance Scan 32 (3.373 min): BN016256.D\data.ms (-28) (#2)

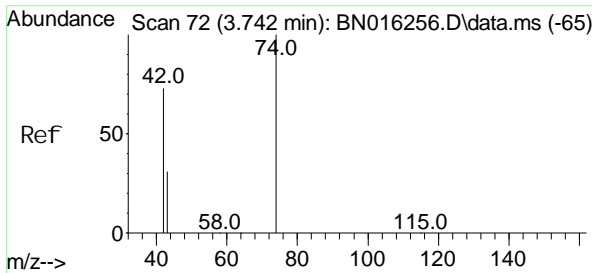
1, 4-Di oxane
Concen: 0.536 ng
RT: 3.373 min Scan# 32
Del ta R. T. 0.000 min
Lab Fi le: BN016288.D
Acq: 10 Sep 2021 13:00



Tgt Ion: 88 Resp: 2164

Ion	Ratio	Lower	Upper
88	100		
43	25.2	20.3	30.5
58	72.5	69.9	104.9



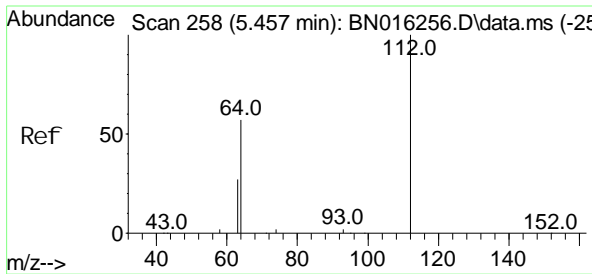
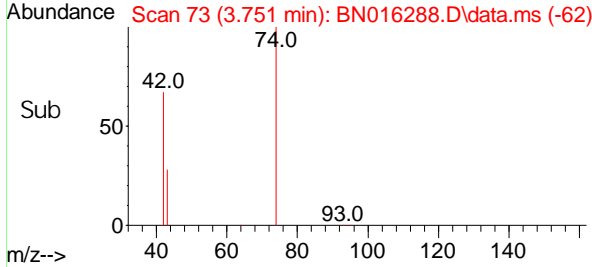
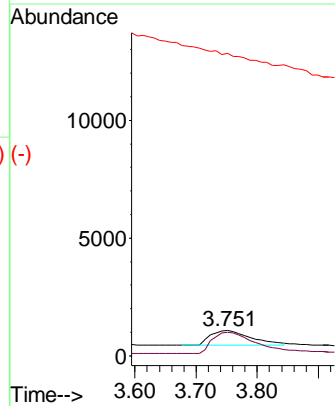
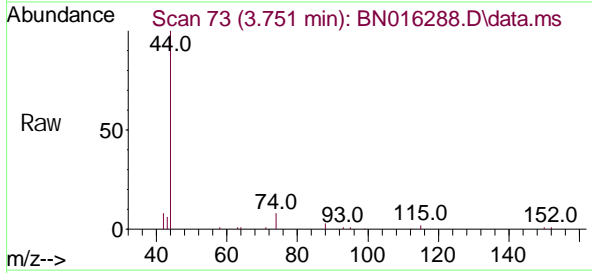


n-Ni trosodi methyl ami ne
 Concen: 0.355 ng
 RT: 3.751 mi n Scan# 73
 Del ta R. T. 0.000 mi n
 Lab Fi le: BN016288. D
 Acq: 10 Sep 2021 13:00

Instrument :
 BNA_N
ClientSampled :
 SSTDCCC0.4

Tgt Ion: 42 Resp: 2972

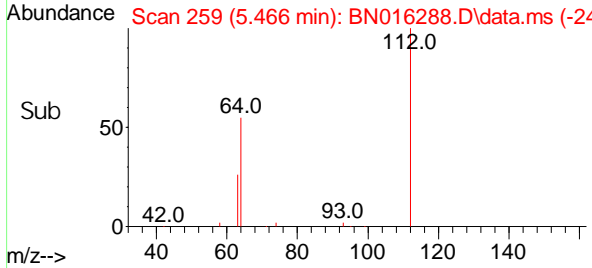
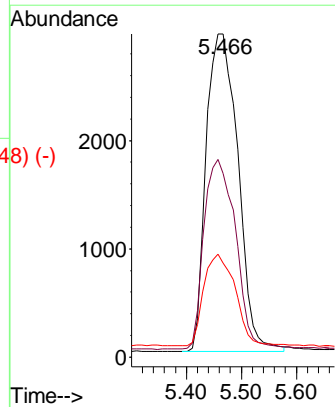
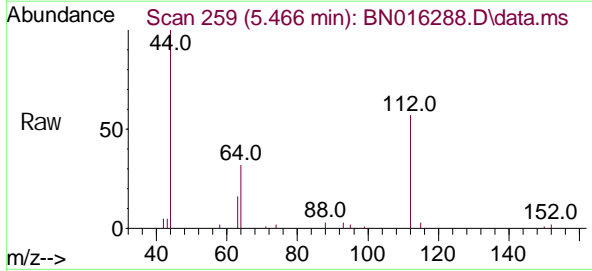
Ion	Ratio	Lower	Upper
42	100		
74	146.0	113.6	170.4
44	0.0	0.0	0.0

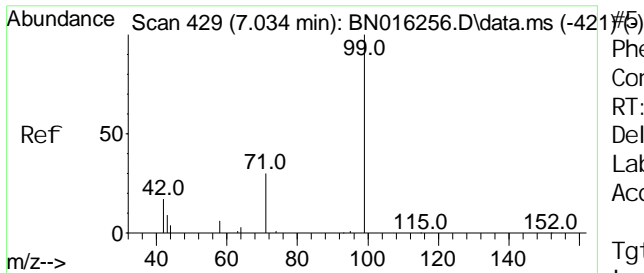


2-Fl uorophenol
 Concen: 0.407 ng
 RT: 5.466 mi n Scan# 259
 Del ta R. T. 0.000 mi n
 Lab Fi le: BN016288. D
 Acq: 10 Sep 2021 13:00

Tgt Ion: 112 Resp: 11806

Ion	Ratio	Lower	Upper
112	100		
64	59.4	47.3	70.9
63	28.3	23.4	35.0

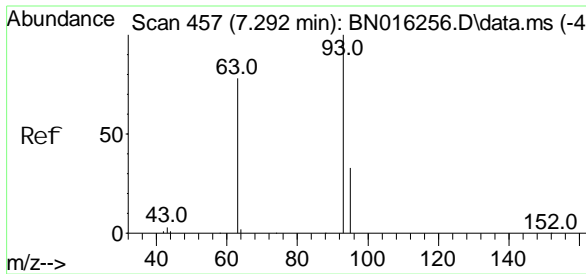
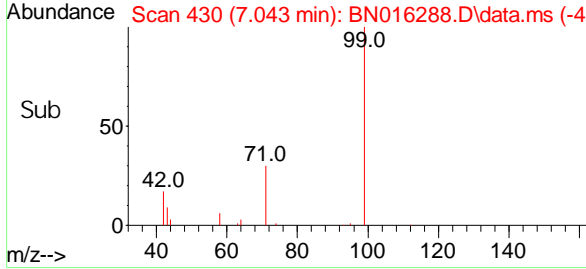
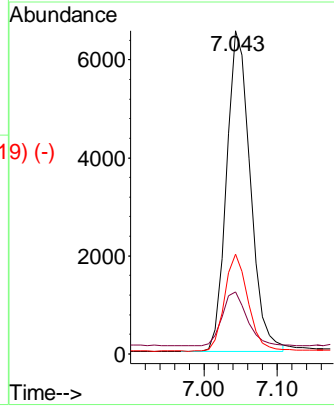
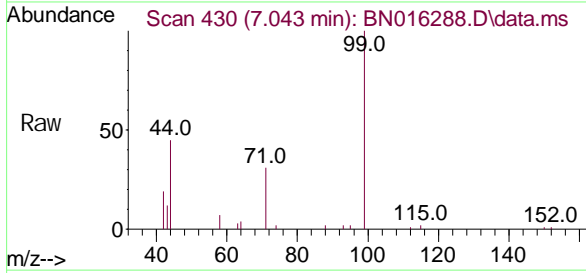




Phenol -d6
 Concen: 0.404 ng
 RT: 7.043 min Scan# 430
 Delta R.T. 0.000 min
 Lab File: BN016288.D
 Acq: 10 Sep 2021 13:00

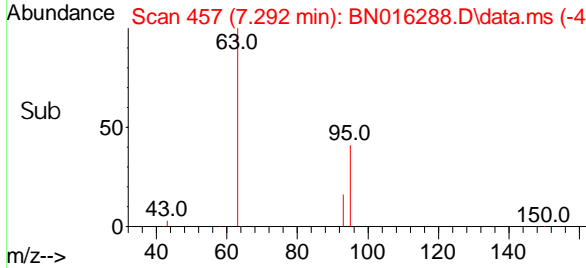
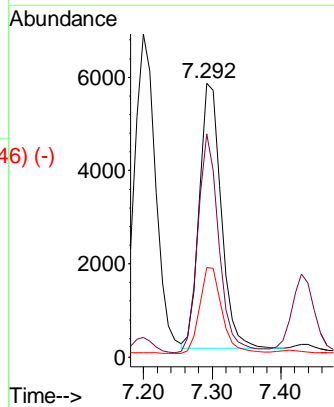
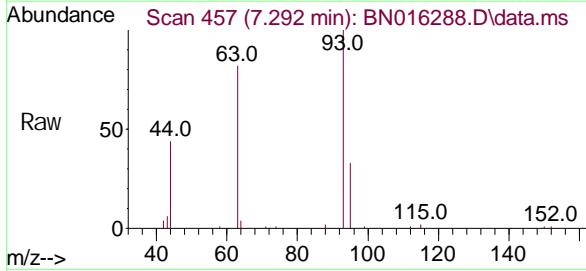
Instrument :
 BNA_N
ClientSampled :
 SSTDCCC0.4

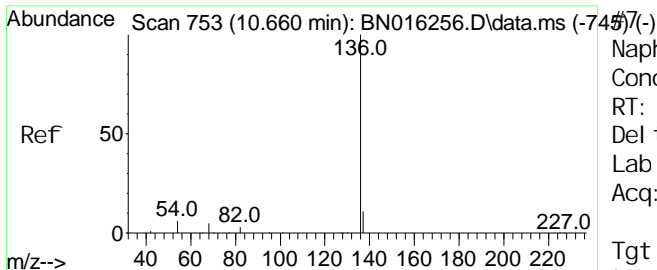
Tgt Ion	Resp	Lower	Upper
99	14692		
42	17.9	14.0	21.0
71	29.9	23.8	35.6



bis(2-Chloroethyl) ether
 Concen: 0.416 ng
 RT: 7.292 min Scan# 457
 Delta R.T. 0.000 min
 Lab File: BN016288.D
 Acq: 10 Sep 2021 13:00

Tgt Ion	Resp	Lower	Upper
93	12466		
63	79.7	63.4	95.0
95	33.1	26.8	40.2

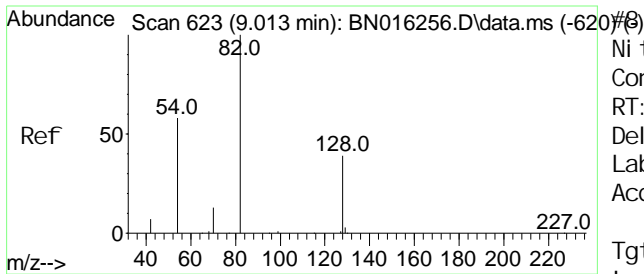
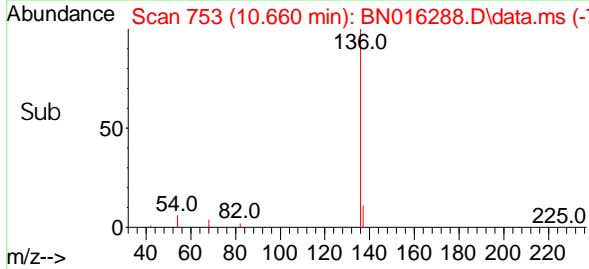
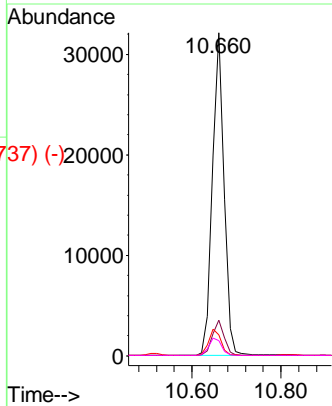
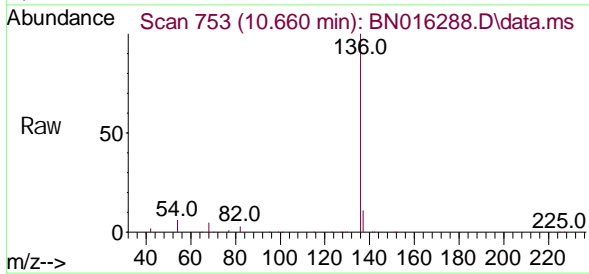




Naphthalene-d8
 Concen: 0.400 ng
 RT: 10.660 min Scan# 753
 Delta R.T. 0.000 min
 Lab File: BN016288.D
 Acq: 10 Sep 2021 13:00

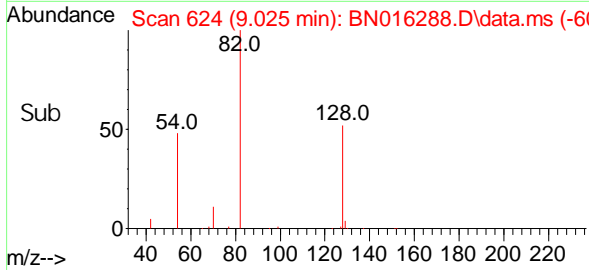
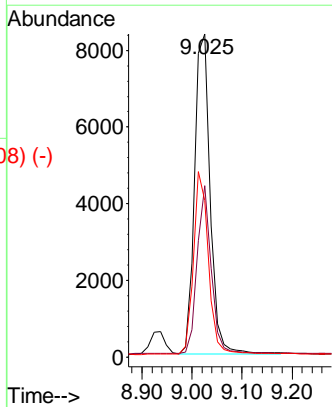
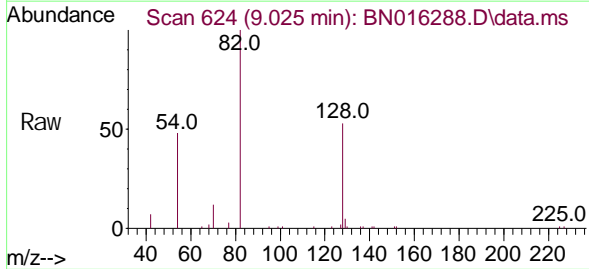
Instrument :
 BNA_N
ClientSampled :
 SSTDCCC0.4

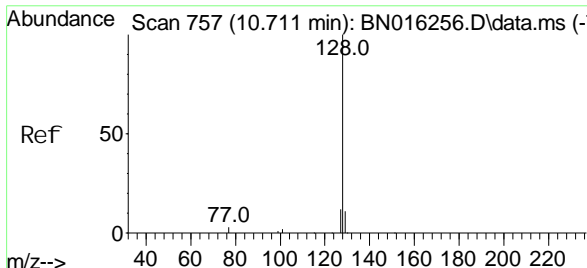
Tgt Ion	Ratio	Lower	Upper
136	100		
137	11.1	8.8	13.2
54	6.5	5.3	7.9
68	4.7	3.9	5.9



Nitrobenzene-d5
 Concen: 0.390 ng
 RT: 9.025 min Scan# 624
 Delta R.T. 0.000 min
 Lab File: BN016288.D
 Acq: 10 Sep 2021 13:00

Tgt Ion	Ratio	Lower	Upper
82	100		
128	53.0	31.7	47.5#
54	48.4	46.4	69.6

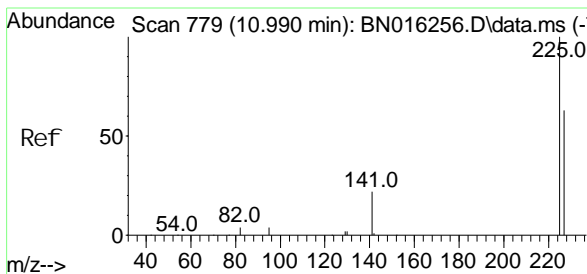
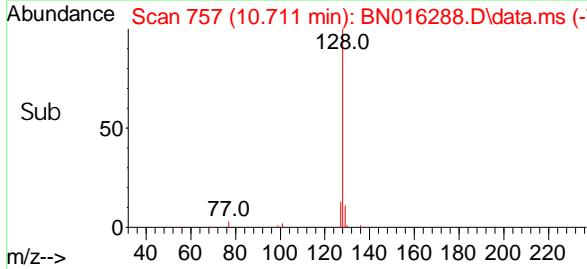
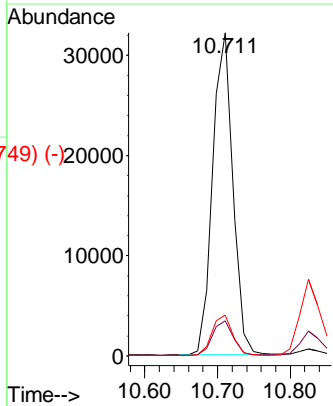
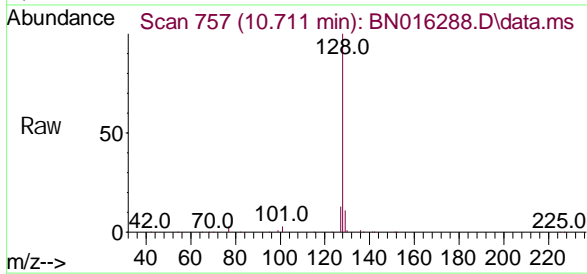




#9 (-)
 Naphthalene
 Concen: 0.405 ng
 RT: 10.711 min Scan# 757
 Delta R.T. 0.000 min
 Lab File: BN016288.D
 Acq: 10 Sep 2021 13:00

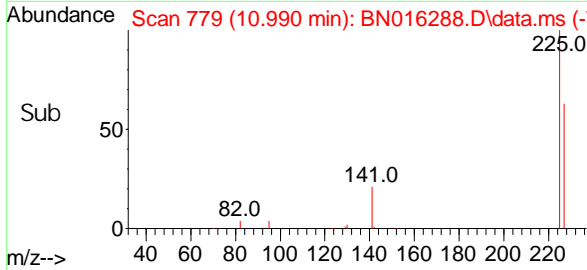
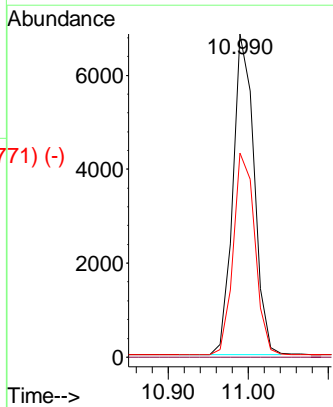
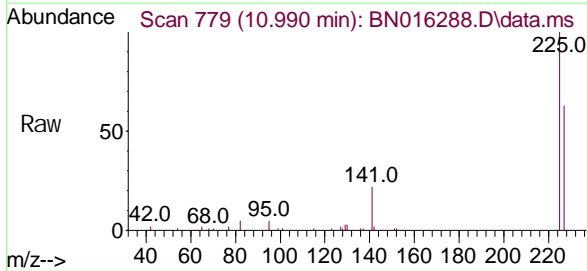
Instrument :
 BNA_N
ClientSampled :
 SSTDCCC0.4

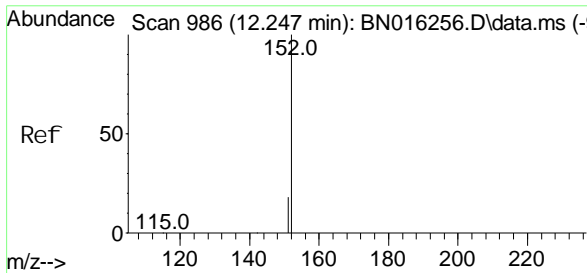
Tgt Ion	Resp	Lower	Upper
128	100		
129	10.9	8.9	13.3
127	12.7	10.1	15.1



#10 (-)
 Hexachlorobutadiene
 Concen: 0.405 ng
 RT: 10.990 min Scan# 779
 Delta R.T. 0.000 min
 Lab File: BN016288.D
 Acq: 10 Sep 2021 13:00

Tgt Ion	Resp	Lower	Upper
225	100		
223	0.0	0.0	0.0
227	64.1	51.5	77.3

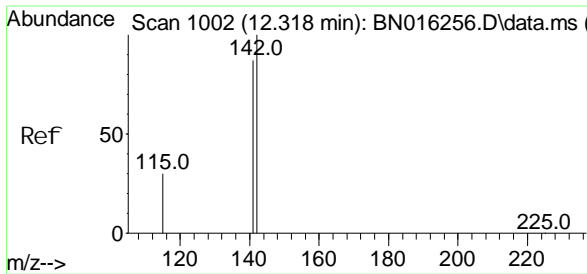
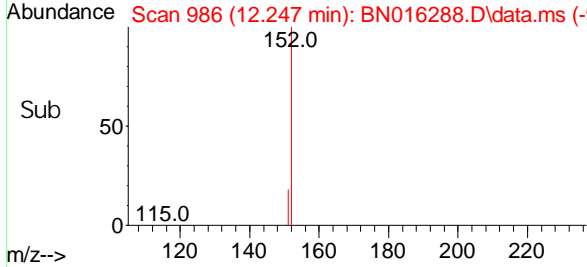
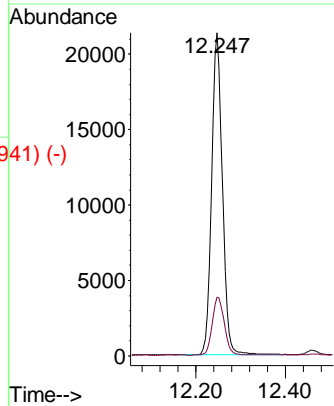
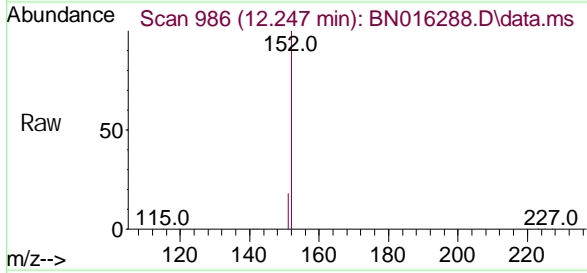




2-Methyl naphthal ene-d10
 Concen: 0.401 ng
 RT: 12.247 min Scan# 986
 Del ta R. T. 0.000 mi n
 Lab Fi le: BN016288. D
 Acq: 10 Sep 2021 13:00

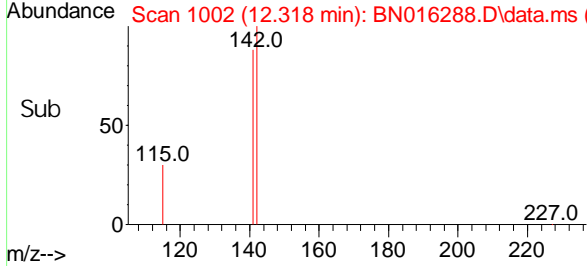
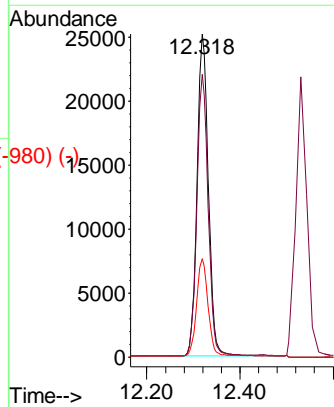
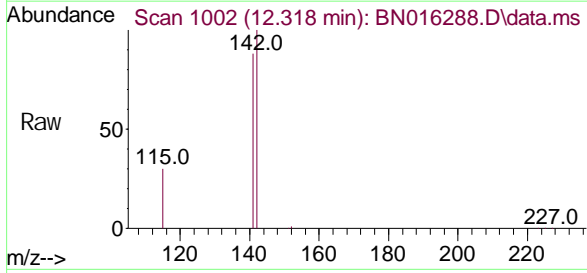
Instrument :
 BNA_N
ClientSampled :
 SSTDCCC0.4

Tgt Ion: 152 Resp: 35832
 Ion Ratio Lower Upper
 152 100
 151 20.1 16.1 24.1

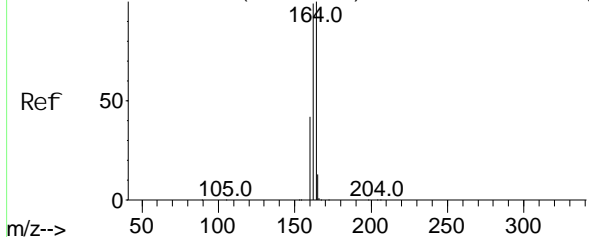


2-Methyl naphthal ene
 Concen: 0.411 ng
 RT: 12.318 min Scan# 1002
 Del ta R. T. 0.000 mi n
 Lab Fi le: BN016288. D
 Acq: 10 Sep 2021 13:00

Tgt Ion: 142 Resp: 42340
 Ion Ratio Lower Upper
 142 100
 141 87.6 69.8 104.8
 115 30.4 24.4 36.6



Abundance Scan 1201 (14.497 min): BN016256.D\data.ms (-1496) (-)



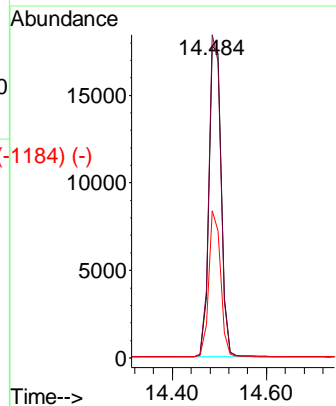
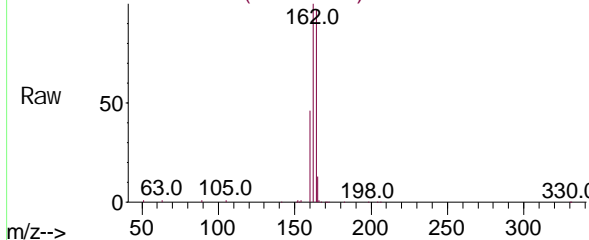
Acenaphthene-d10
Concen: 0.400 ng
RT: 14.484 min Scan# 1200
Delta R.T. 0.000 min
Lab File: BN016288.D
Acq: 10 Sep 2021 13:00

Instrument :
BNA_N
ClientSampled :
SSTDCCC0.4

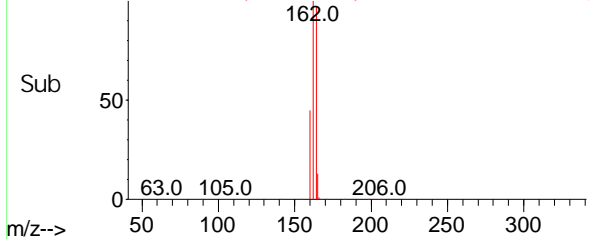
Tgt Ion: 164 Resp: 32481

Ion	Ratio	Lower	Upper
164	100		
162	103.5	79.0	118.4
160	47.1	34.1	51.1

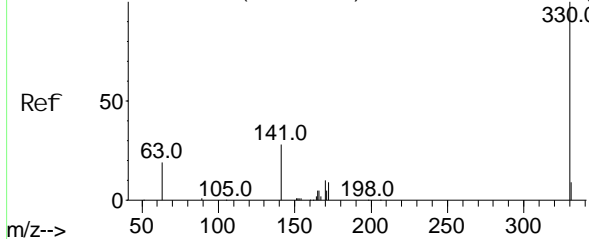
Abundance Scan 1200 (14.484 min): BN016288.D\data.ms



Abundance Scan 1200 (14.484 min): BN016288.D\data.ms (-1184) (-)



Abundance Scan 1318 (15.982 min): BN016256.D\data.ms (-1114) (-)

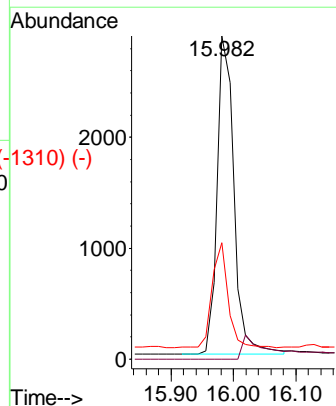
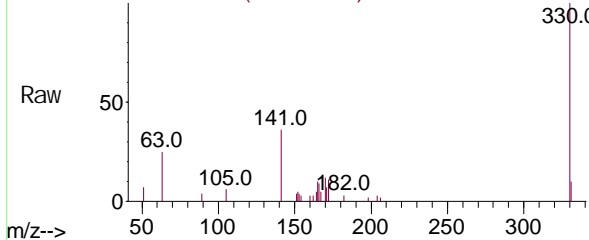


2,4,6-Tri bromophenol
Concen: 0.395 ng
RT: 15.982 min Scan# 1318
Delta R.T. 0.000 min
Lab File: BN016288.D
Acq: 10 Sep 2021 13:00

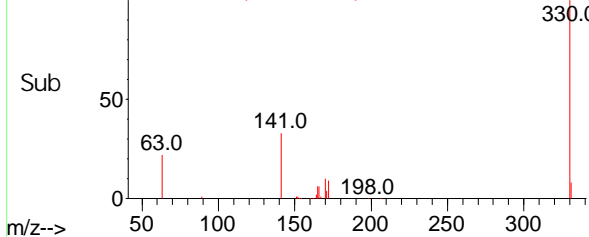
Tgt Ion: 330 Resp: 5258

Ion	Ratio	Lower	Upper
330	100		
332	0.0	0.0	0.0
141	31.6	25.0	37.4

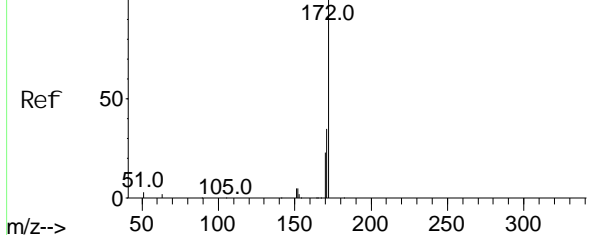
Abundance Scan 1318 (15.982 min): BN016288.D\data.ms



Abundance Scan 1318 (15.982 min): BN016288.D\data.ms (-1310) (-)



Abundance Scan 1092 (13.114 min): BN016256.D\data.ms (-1084) (-)

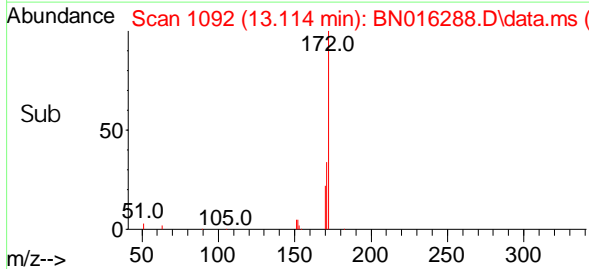
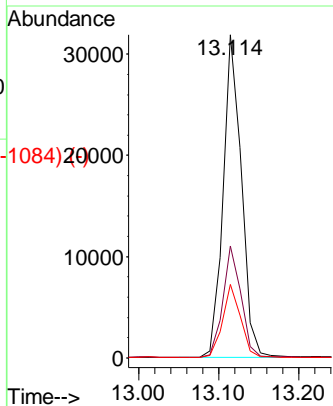
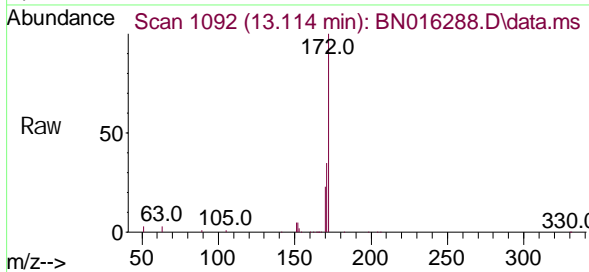


2-Fluorophenyl
Concen: 0.402 ng
RT: 13.114 min Scan# 1092
Delta R.T. 0.000 min
Lab File: BN016288.D
Acq: 10 Sep 2021 13:00

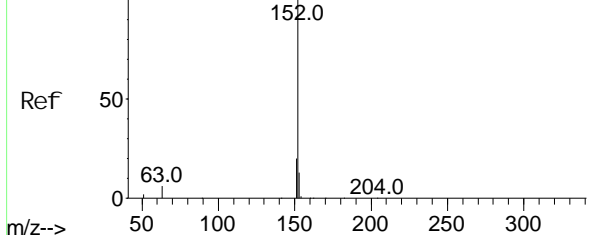
Instrument :
BNA_N
Client Sampled :
SSTDCCC0.4

Tgt Ion: 172 Resp: 51159

Ion	Ratio	Lower	Upper
172	100		
171	34.7	27.8	41.6
170	22.7	18.2	27.2



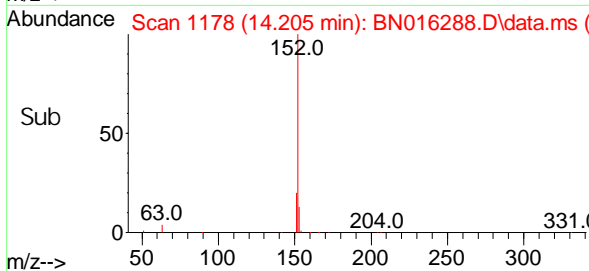
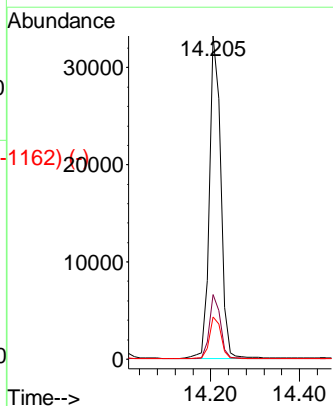
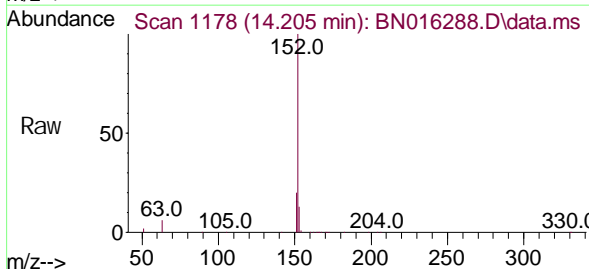
Abundance Scan 1178 (14.205 min): BN016256.D\data.ms (-1162) (-)



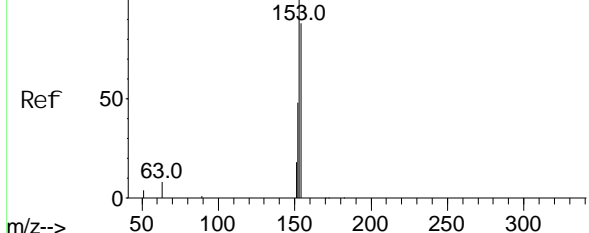
Acenaphthyl ene
Concen: 0.397 ng
RT: 14.205 min Scan# 1178
Delta R.T. 0.000 min
Lab File: BN016288.D
Acq: 10 Sep 2021 13:00

Tgt Ion: 152 Resp: 57741

Ion	Ratio	Lower	Upper
152	100		
151	19.1	15.2	22.8
153	13.1	10.5	15.7



Abundance Scan 1205 (14.548 min): BN016256.D\data.ms (-1207) (-)



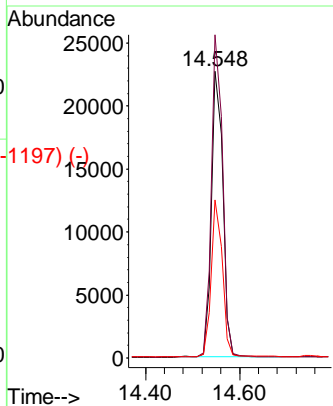
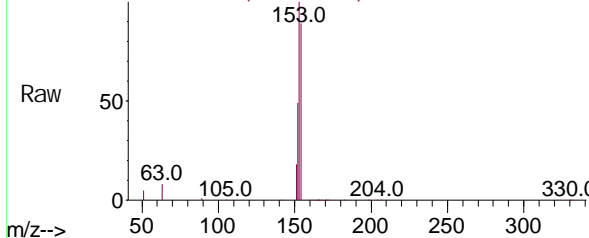
Acenaphthene
Concen: 0.402 ng
RT: 14.548 min Scan# 1205
Delta R.T. 0.000 min
Lab File: BN016288.D
Acq: 10 Sep 2021 13:00

Instrument :
BNA_N
ClientSampled :
SSTDCCC0.4

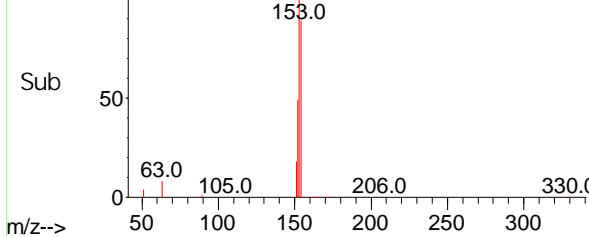
Tgt Ion: 154 Resp: 37949

Ion	Ratio	Lower	Upper
154	100		
153	111.6	89.3	133.9
152	53.4	42.2	63.4

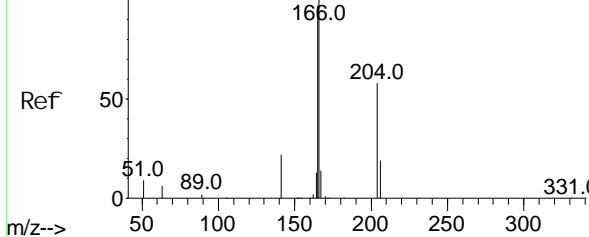
Abundance Scan 1205 (14.548 min): BN016288.D\data.ms



Abundance Scan 1205 (14.548 min): BN016288.D\data.ms (-1197) (-)



Abundance Scan 1283 (15.538 min): BN016256.D\data.ms (-1218) (-)

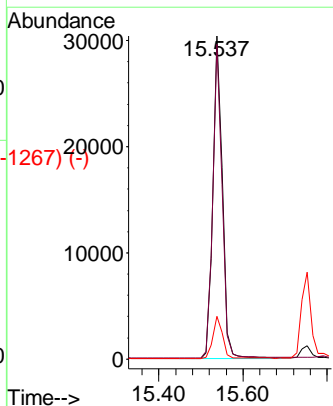
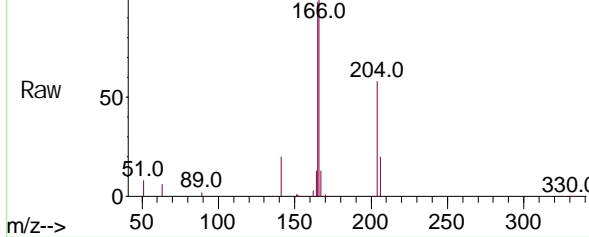


Fluorene
Concen: 0.404 ng
RT: 15.537 min Scan# 1283
Delta R.T. 0.000 min
Lab File: BN016288.D
Acq: 10 Sep 2021 13:00

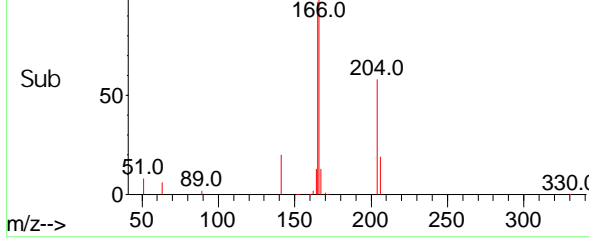
Tgt Ion: 166 Resp: 47175

Ion	Ratio	Lower	Upper
166	100		
165	96.2	76.7	115.1
167	13.4	10.9	16.3

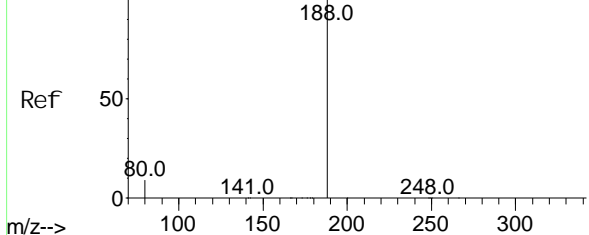
Abundance Scan 1283 (15.537 min): BN016288.D\data.ms



Abundance Scan 1283 (15.537 min): BN016288.D\data.ms (-1267) (-)



Abundance Scan 1421 (17.237 min): BN016256.D\data.ms (-1415) (-)



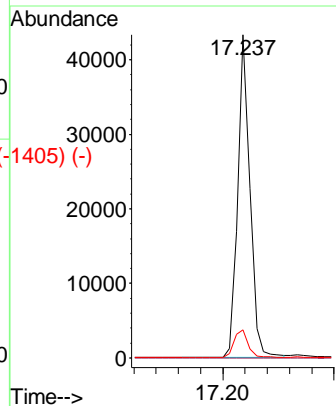
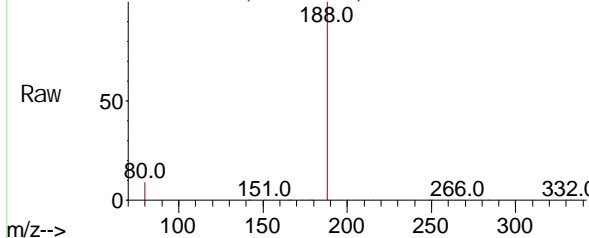
Phenanthrene-d10
Concen: 0.400 ng
RT: 17.237 min Scan# 1421
Delta R.T. 0.000 min
Lab File: BN016288.D
Acq: 10 Sep 2021 13:00

Instrument :
BNA_N
ClientSampled :
SSTDCCC0.4

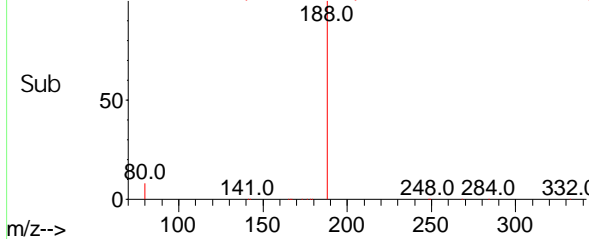
Tgt Ion: 188 Resp: 65651

Ion	Ratio	Lower	Upper
188	100		
94	0.0	0.0	0.0
80	8.6	7.0	10.6

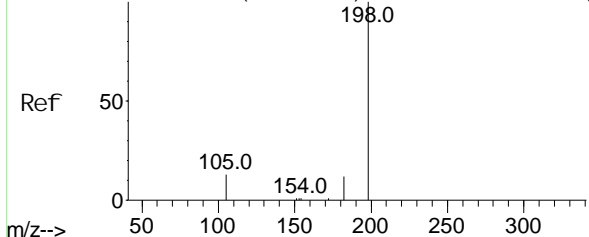
Abundance Scan 1421 (17.237 min): BN016288.D\data.ms



Abundance Scan 1421 (17.237 min): BN016288.D\data.ms (-1405) (-)



Abundance Scan 1291 (15.639 min): BN016256.D\data.ms (-1286) (-)

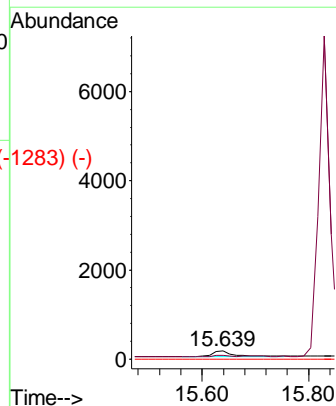
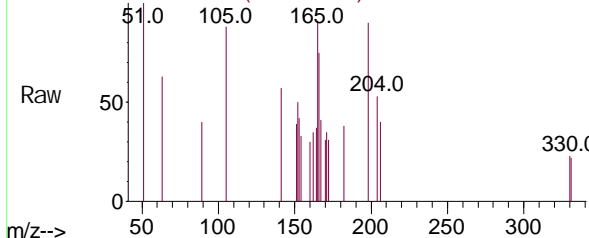


4,6-Dinitro-2-methyl phenol
Concen: 0.340 ng
RT: 15.639 min Scan# 1291
Delta R.T. 0.000 min
Lab File: BN016288.D
Acq: 10 Sep 2021 13:00

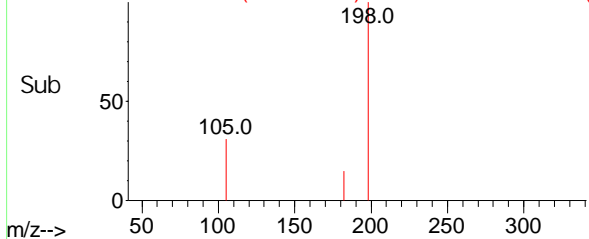
Tgt Ion: 198 Resp: 362

Ion	Ratio	Lower	Upper
198	100		
182	42.2	26.6	39.8#
77	0.0	0.0	0.0

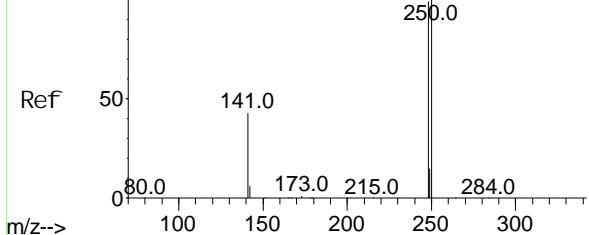
Abundance Scan 1291 (15.639 min): BN016288.D\data.ms



Abundance Scan 1291 (15.639 min): BN016288.D\data.ms (-1283) (-)



Abundance Scan 1355 (16.433 min): BN016256.D\data.ms (-1350) (-)



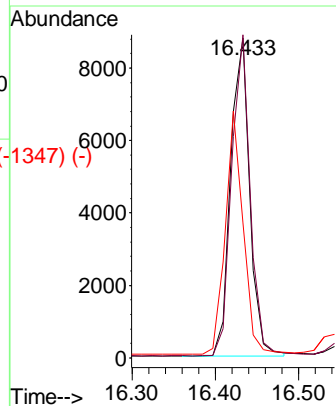
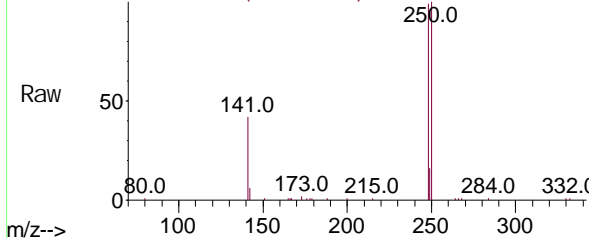
4-Bromophenyl -phenyl ether
Concen: 0.403 ng
RT: 16.433 min Scan# 1355
Delta R.T. 0.000 min
Lab File: BN016288.D
Acq: 10 Sep 2021 13:00

Instrument :
BNA_N
ClientSampled :
SSTDCCC0.4

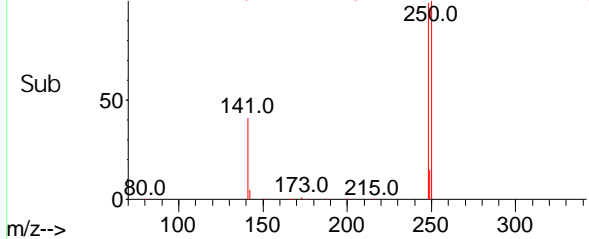
Tgt Ion: 248 Resp: 14159

Ion	Ratio	Lower	Upper
248	100		
250	101.0	80.5	120.7
141	42.2	34.8	52.2

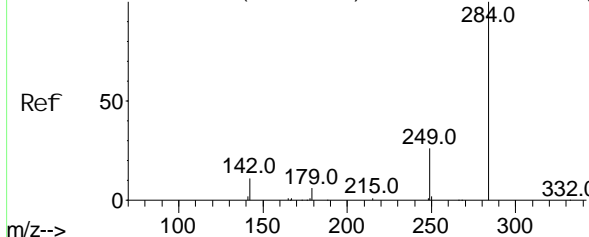
Abundance Scan 1355 (16.433 min): BN016288.D\data.ms



Abundance Scan 1355 (16.433 min): BN016288.D\data.ms (-1347) (-)



Abundance Scan 1365 (16.555 min): BN016256.D\data.ms (-1359) (-)

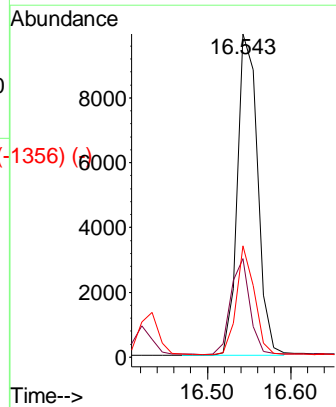
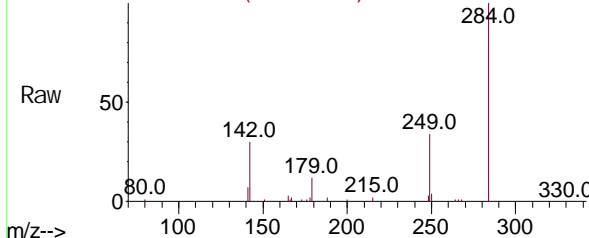


Hexachlorobenzene
Concen: 0.400 ng
RT: 16.543 min Scan# 1364
Delta R.T. 0.000 min
Lab File: BN016288.D
Acq: 10 Sep 2021 13:00

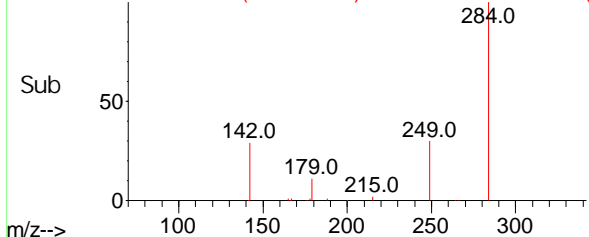
Tgt Ion: 284 Resp: 16814

Ion	Ratio	Lower	Upper
284	100		
142	28.5	22.6	34.0
249	30.1	24.4	36.6

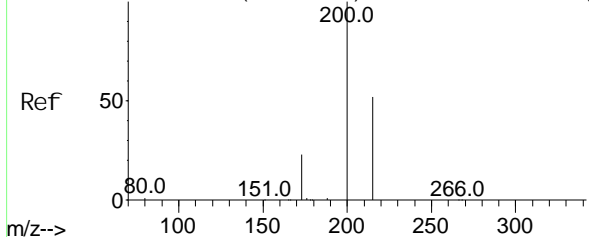
Abundance Scan 1364 (16.543 min): BN016288.D\data.ms



Abundance Scan 1364 (16.543 min): BN016288.D\data.ms (-1356) (-)



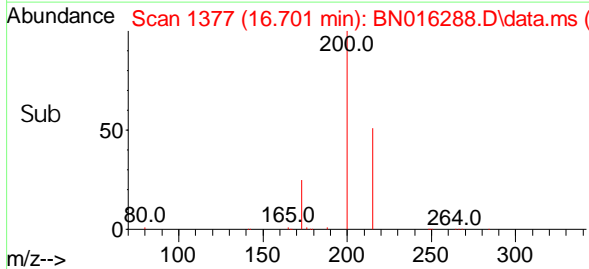
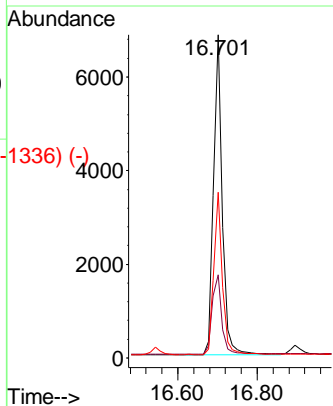
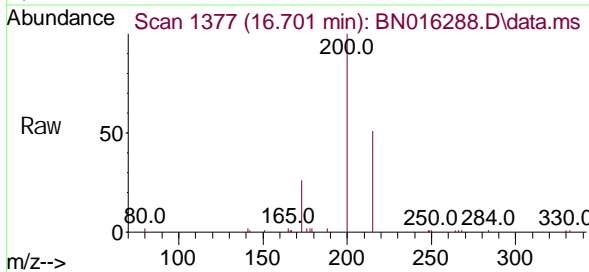
Abundance Scan 1377 (16.701 min): BN016256.D\data.ms (-1320) (-)



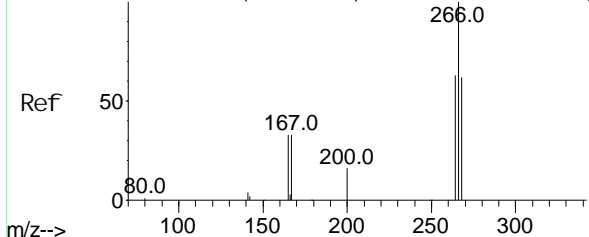
Atrazine
Concen: 0.328 ng
RT: 16.701 min Scan# 1377
Delta R.T. 0.000 min
Lab File: BN016288.D
Acq: 10 Sep 2021 13:00

Instrument :
BNA_N
ClientSampleId :
SSTDCCC0.4

Tgt Ion	Ratio	Lower	Upper
200	100		
173	25.8	18.7	28.1
215	51.3	41.6	62.4

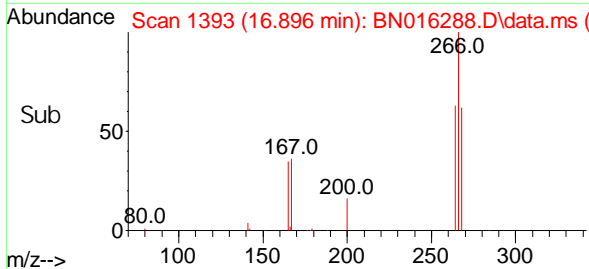
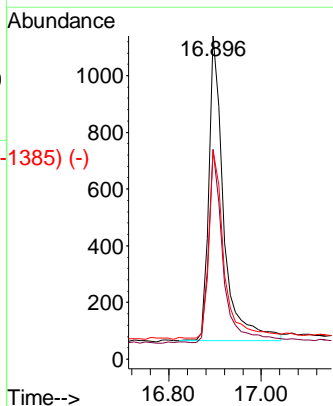
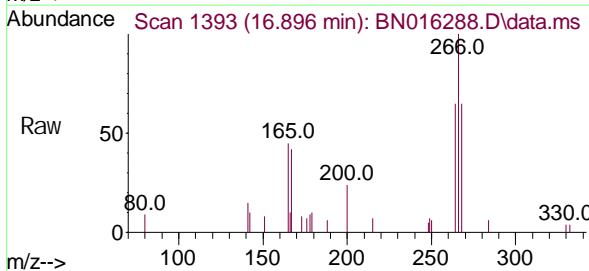


Abundance Scan 1393 (16.896 min): BN016256.D\data.ms (-1327) (-)

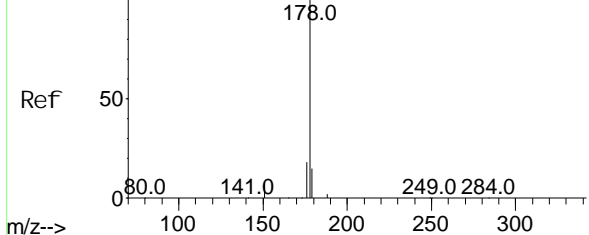


Pentachlorophenol
Concen: 0.474 ng
RT: 16.896 min Scan# 1393
Delta R.T. 0.000 min
Lab File: BN016288.D
Acq: 10 Sep 2021 13:00

Tgt Ion	Ratio	Lower	Upper
266	100		
264	62.5	50.6	75.8
268	62.3	52.6	79.0



Abundance Scan 1424 (17.273 min): BN016256.D\data.ms (-1425) (-)

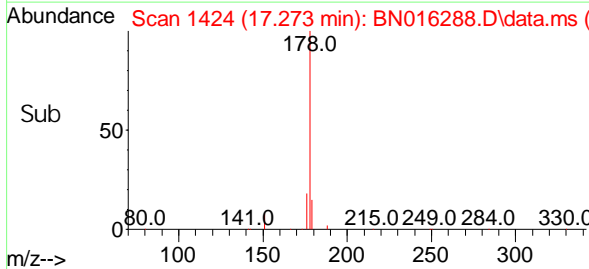
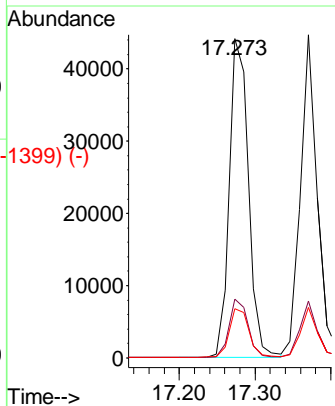
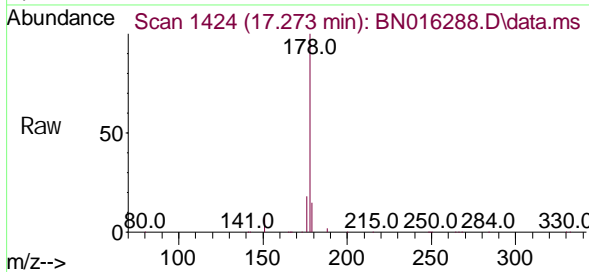


Phenanthrene
Concen: 0.403 ng
RT: 17.273 min Scan# 1424
Delta R.T. 0.000 min
Lab File: BN016288.D
Acq: 10 Sep 2021 13:00

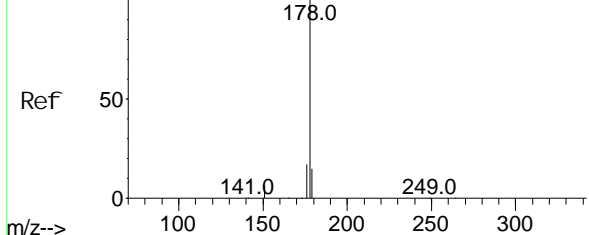
Instrument :
BNA_N
ClientSampled :
SSTDCCC0.4

Tgt Ion: 178 Resp: 76870

Ion	Ratio	Lower	Upper
178	100		
176	17.9	14.4	21.6
179	15.7	12.2	18.4



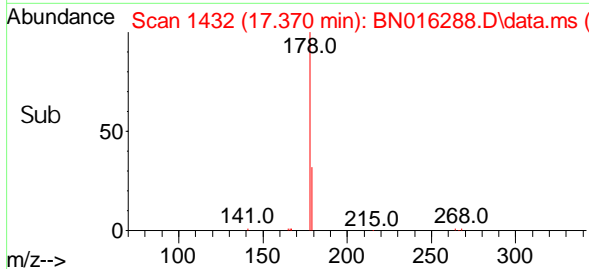
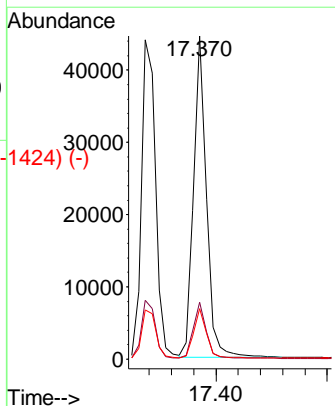
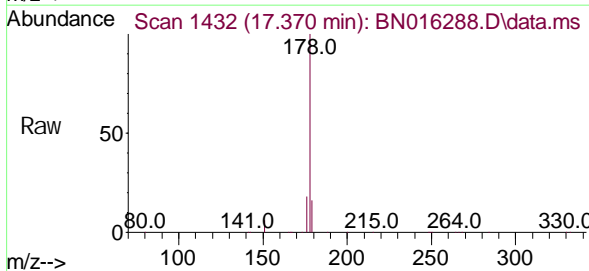
Abundance Scan 1432 (17.371 min): BN016256.D\data.ms (-1426) (-)



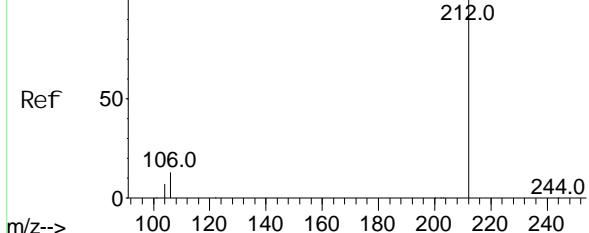
Anthracene
Concen: 0.401 ng
RT: 17.370 min Scan# 1432
Delta R.T. 0.000 min
Lab File: BN016288.D
Acq: 10 Sep 2021 13:00

Tgt Ion: 178 Resp: 70256

Ion	Ratio	Lower	Upper
178	100		
176	17.4	13.9	20.9
179	15.3	12.2	18.4



Abundance Scan 1738 (19.271 min): BN016256.D\data.ms (-1728) (-)

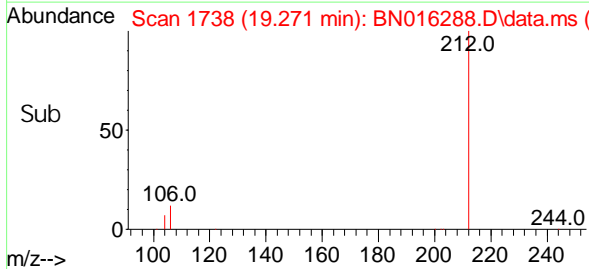
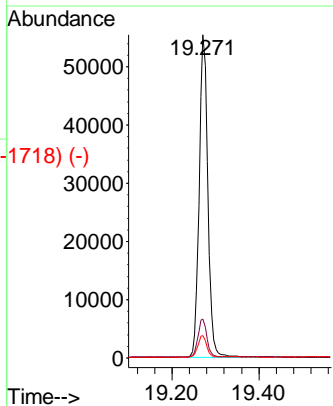
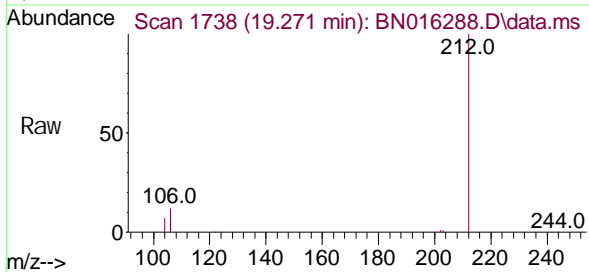


Fluoranthene-d10
Concen: 0.403 ng
RT: 19.271 min Scan# 1738
Delta R.T. 0.000 min
Lab File: BN016288.D
Acq: 10 Sep 2021 13:00

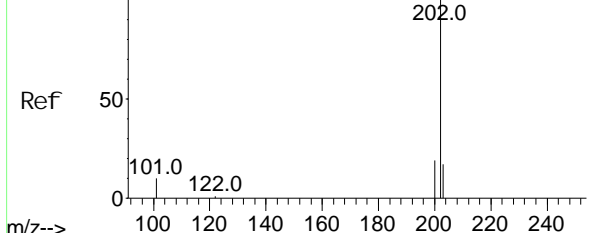
Instrument :
BNA_N
ClientSampled :
SSTDCCC0.4

Tgt Ion: 212 Resp: 77825

Ion	Ratio	Lower	Upper
212	100		
106	12.1	9.8	14.6
104	6.7	5.4	8.2



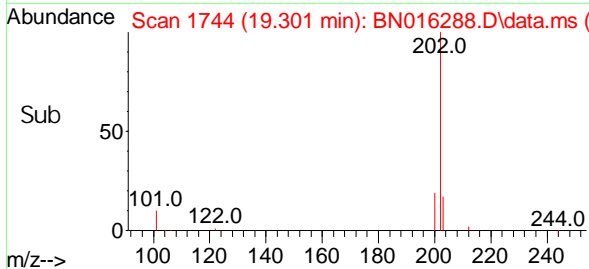
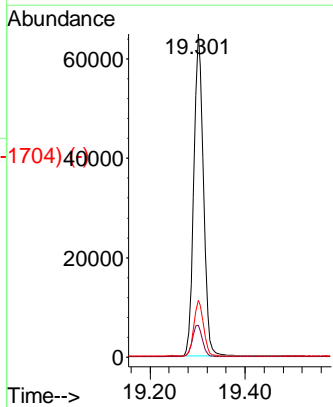
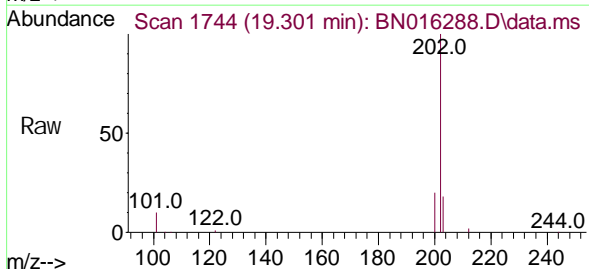
Abundance Scan 1744 (19.301 min): BN016256.D\data.ms (-1728) (-)



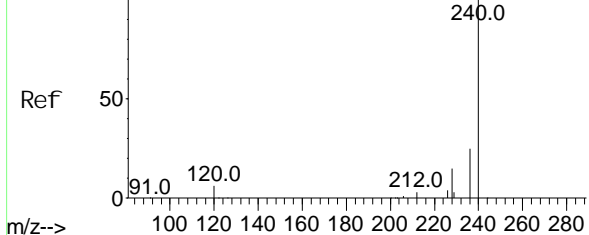
Fluoranthene
Concen: 0.407 ng
RT: 19.301 min Scan# 1744
Delta R.T. 0.000 min
Lab File: BN016288.D
Acq: 10 Sep 2021 13:00

Tgt Ion: 202 Resp: 91098

Ion	Ratio	Lower	Upper
202	100		
101	10.5	8.5	12.7
203	17.3	13.8	20.8



Abundance Scan 2020 (21.429 min): BN016256.D\data.ms (-2020) (-)

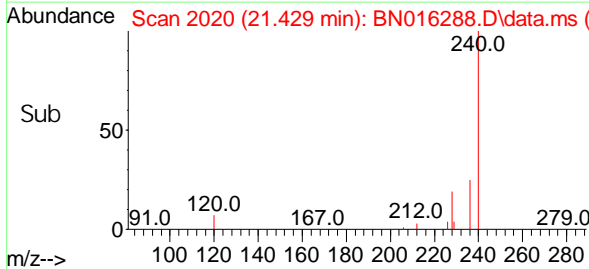
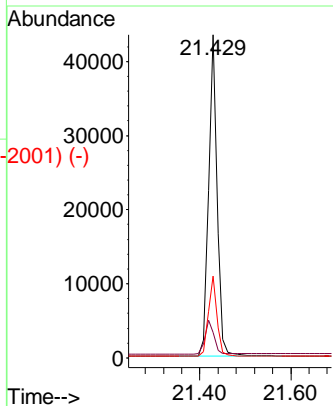
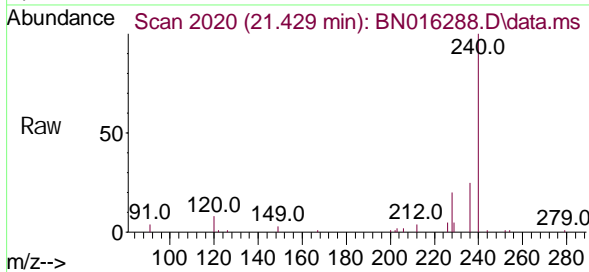


Chrysene-d12
Concen: 0.400 ng
RT: 21.429 min Scan# 2020
Delta R.T. 0.000 min
Lab File: BN016288.D
Acq: 10 Sep 2021 13:00

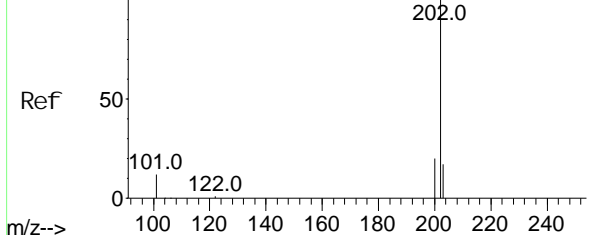
Instrument :
BNA_N
ClientSampled :
SSTDCCC0.4

Tgt Ion: 240 Resp: 56616

Ion	Ratio	Lower	Upper
240	100		
120	7.8	5.3	7.9
236	25.3	19.8	29.8



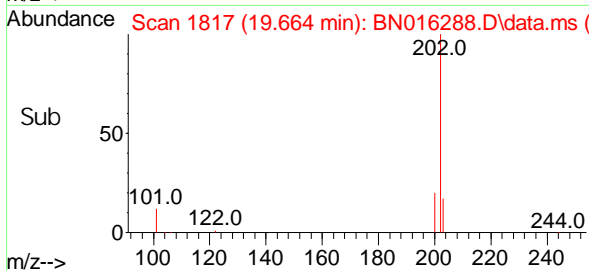
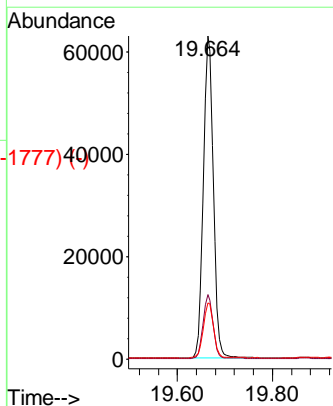
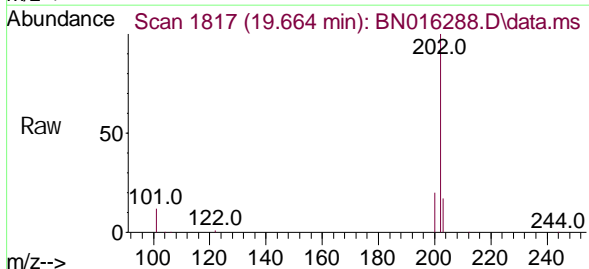
Abundance Scan 1817 (19.664 min): BN016256.D\data.ms (-1817) (-)



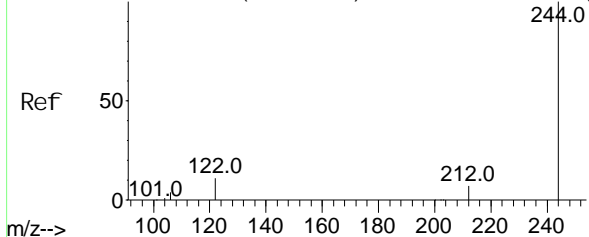
Pyrene
Concen: 0.478 ng
RT: 19.664 min Scan# 1817
Delta R.T. 0.000 min
Lab File: BN016288.D
Acq: 10 Sep 2021 13:00

Tgt Ion: 202 Resp: 91694

Ion	Ratio	Lower	Upper
202	100		
200	19.7	15.8	23.6
203	17.5	13.9	20.9



Abundance Scan 1858 (19.867 min): BN016256.D\data.ms (-1828) (-)

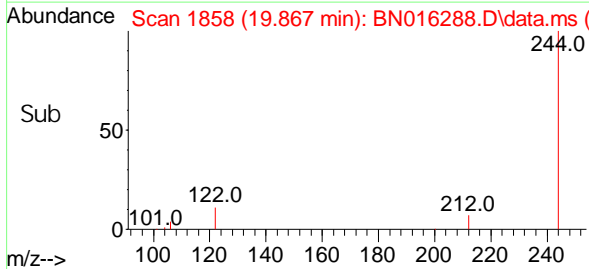
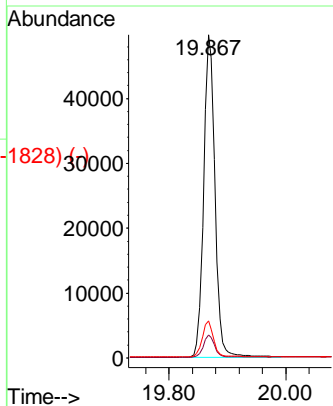
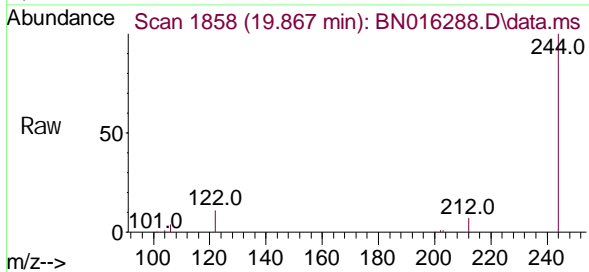


Terphenyl -d14
Concen: 0.468 ng
RT: 19.867 min Scan# 1858
Delta R. T. 0.000 min
Lab File: BN016288.D
Acq: 10 Sep 2021 13:00

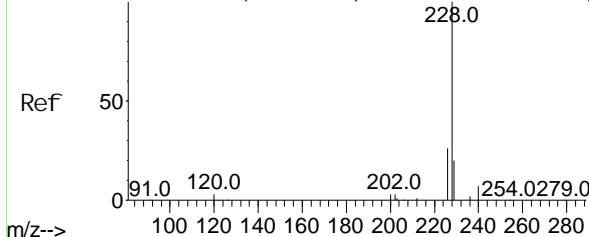
Instrument :
BNA_N
ClientSampled :
SSTDCCC0.4

Tgt Ion: 244 Resp: 66480

Ion	Ratio	Lower	Upper
244	100		
212	7.1	5.5	8.3
122	11.4	9.0	13.4



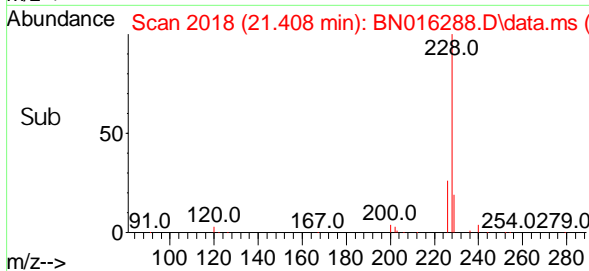
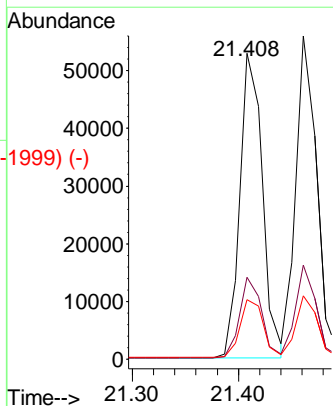
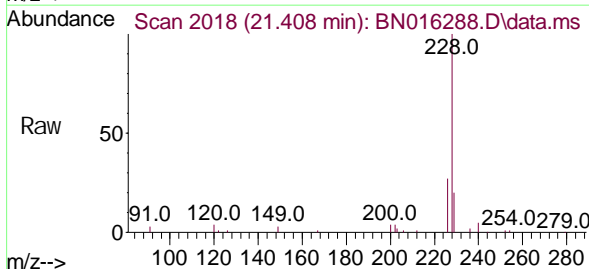
Abundance Scan 2018 (21.408 min): BN016256.D\data.ms (-1999) (-)



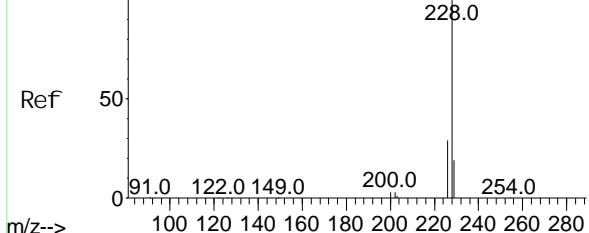
Benzo(a)anthracene
Concen: 0.437 ng
RT: 21.408 min Scan# 2018
Delta R. T. 0.000 min
Lab File: BN016288.D
Acq: 10 Sep 2021 13:00

Tgt Ion: 228 Resp: 77210

Ion	Ratio	Lower	Upper
228	100		
226	26.8	20.8	31.2
229	19.5	15.8	23.6

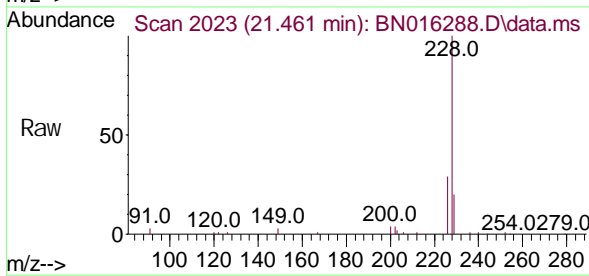


Abundance Scan 2023 (21.461 min): BN016256.D\data.ms (-2023) (-)



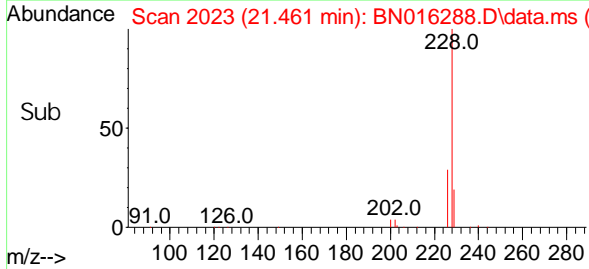
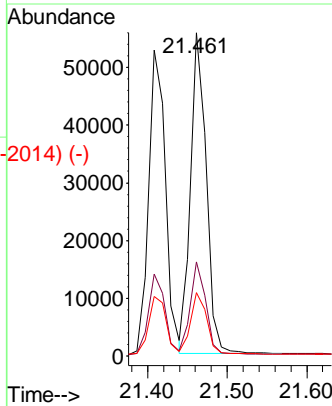
Chrysene
Concen: 0.433 ng
RT: 21.461 min Scan# 2023
Delta R.T. 0.000 min
Lab File: BN016288.D
Acq: 10 Sep 2021 13:00

Instrument :
BNA_N
ClientSampleId :
SSTDCCC0.4

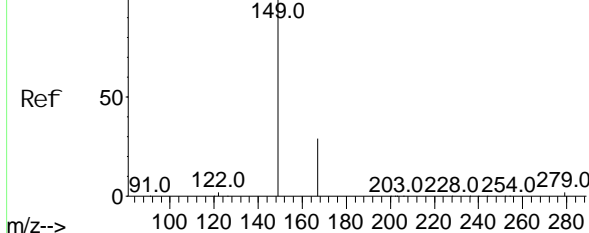


Tgt Ion: 228 Resp: 75743

Ion	Ratio	Lower	Upper
228	100		
226	29.2	23.0	34.4
229	19.6	15.6	23.4



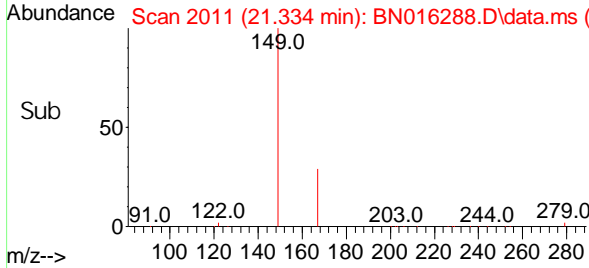
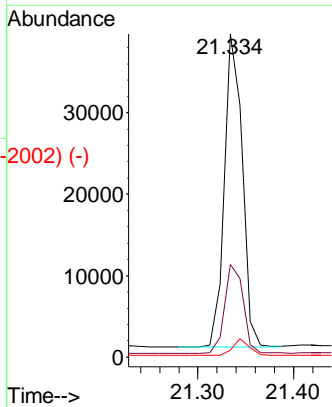
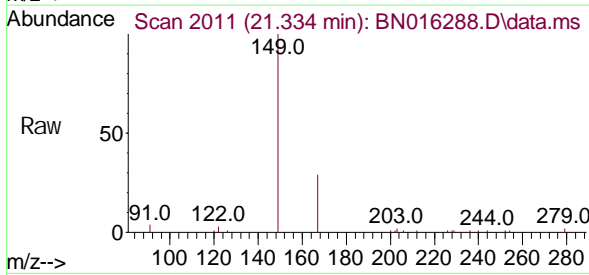
Abundance Scan 2011 (21.334 min): BN016256.D\data.ms (-2011) (-)



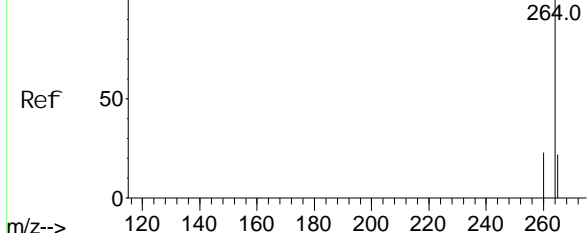
Bis(2-ethyl hexyl)phthalate
Concen: 0.468 ng
RT: 21.334 min Scan# 2011
Delta R.T. 0.000 min
Lab File: BN016288.D
Acq: 10 Sep 2021 13:00

Tgt Ion: 149 Resp: 50896

Ion	Ratio	Lower	Upper
149	100		
167	29.6	23.4	35.0
279	4.8	3.9	5.9



Abundance Scan 2523 (23.813 min): BN016256.D\data.ms (-2480) (-)

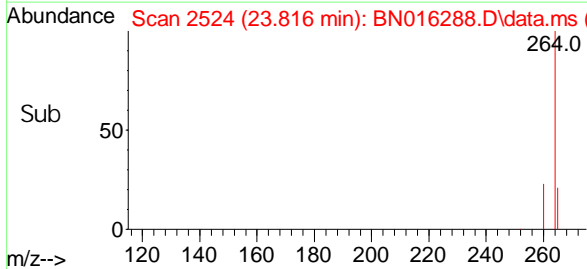
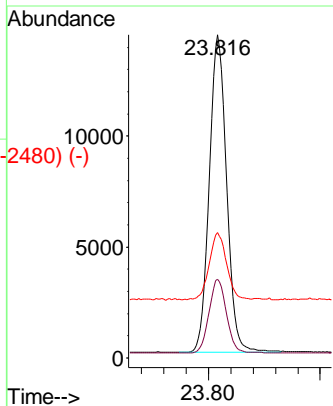
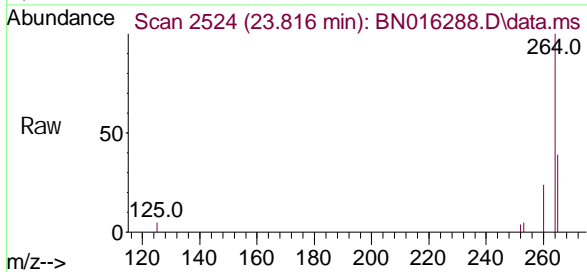


Peryl ene-d12
Concen: 0.400 ng
RT: 23.816 min Scan# 2524
Delta R.T. 0.000 min
Lab File: BN016288.D
Acq: 10 Sep 2021 13:00

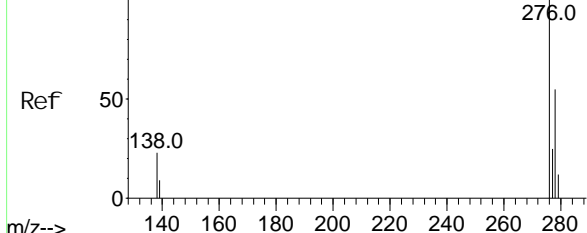
Instrument :
BNA_N
ClientSampleId :
SSTDCCC0.4

Tgt Ion: 264 Resp: 30746

Ion	Ratio	Lower	Upper
264	100		
260	24.3	18.9	28.3
265	38.9	23.7	35.5#



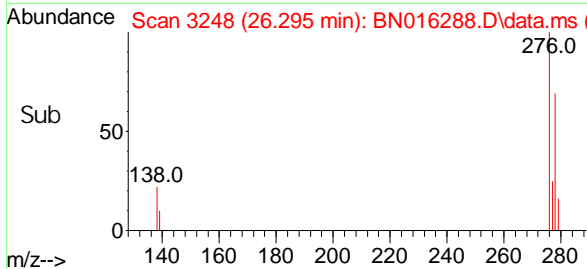
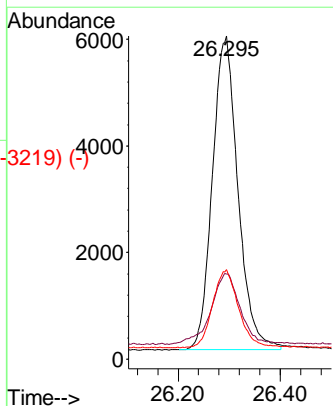
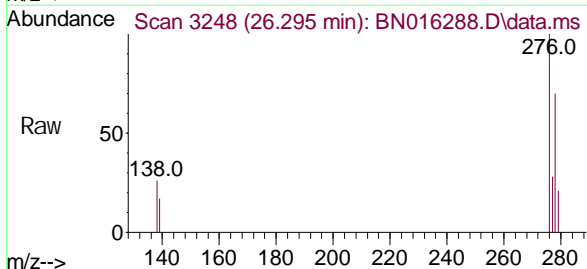
Abundance Scan 3246 (26.288 min): BN016256.D\data.ms (-3226) (-)



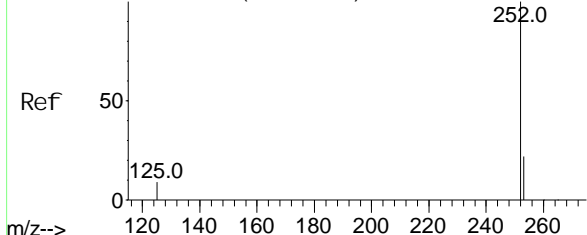
Indeno(1,2,3-cd)pyrene
Concen: 0.399 ng
RT: 26.295 min Scan# 3248
Delta R.T. 0.000 min
Lab File: BN016288.D
Acq: 10 Sep 2021 13:00

Tgt Ion: 276 Resp: 20393

Ion	Ratio	Lower	Upper
276	100		
138	24.1	19.3	28.9
277	25.5	20.2	30.2



Abundance Scan 2311 (23.087 min): BN016256.D\data.ms (-2253) (-)

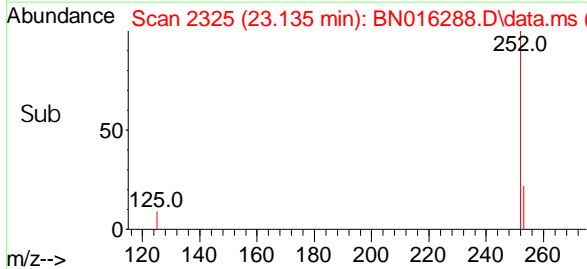
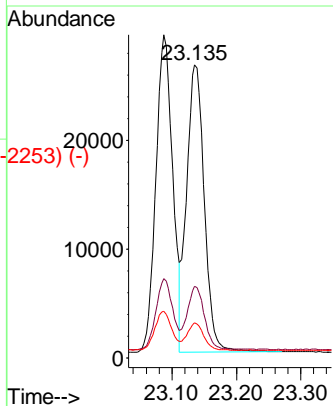
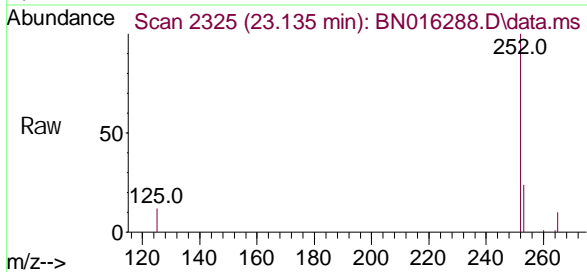


Benzo(b) fluoranthene
Concen: 0.424 ng
RT: 23.135 min Scan# 2325
Delta R. T. 0.048 min
Lab File: BN016288.D
Acq: 10 Sep 2021 13:00

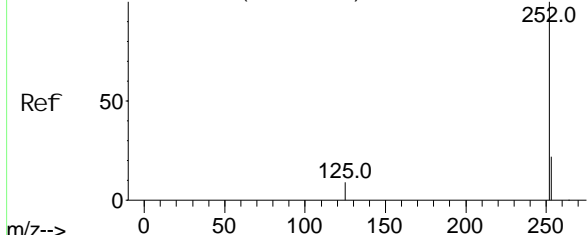
Instrument :
BNA_N
ClientSampleId :
SSTDCCC0.4

Tgt Ion: 252 Resp: 50351

Ion	Ratio	Lower	Upper
252	100		
253	24.4	18.2	27.2
125	11.9	8.4	12.6



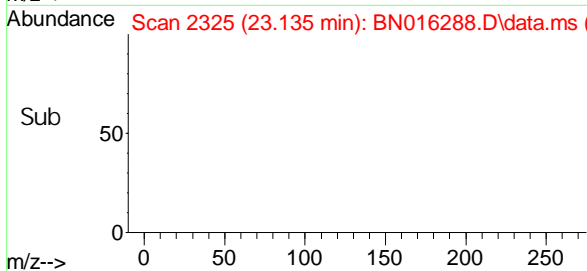
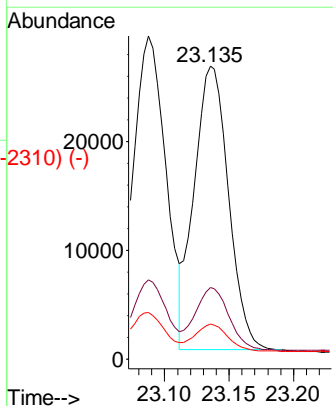
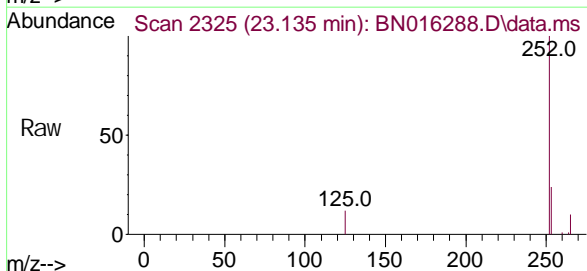
Abundance Scan 2325 (23.135 min): BN016256.D\data.ms (-2253) (-)



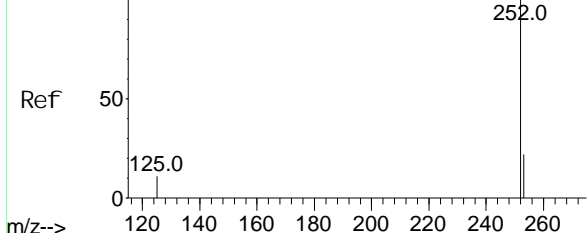
Benzo(k) fluoranthene
Concen: 0.458 ng
RT: 23.135 min Scan# 2325
Delta R. T. 0.000 min
Lab File: BN016288.D
Acq: 10 Sep 2021 13:00

Tgt Ion: 252 Resp: 48405

Ion	Ratio	Lower	Upper
252	100		
253	24.4	18.2	27.2
125	11.9	8.2	12.4



Abundance Scan 2492 (23.707 min): BN016256.D\data.ms (-2435) (-)

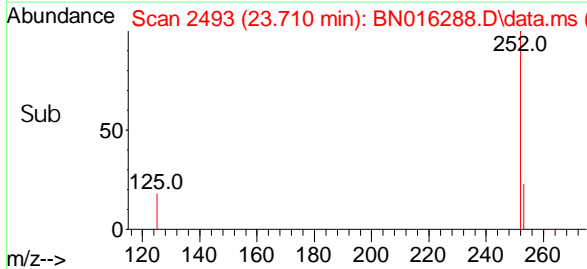
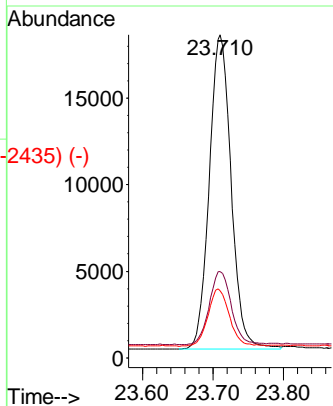
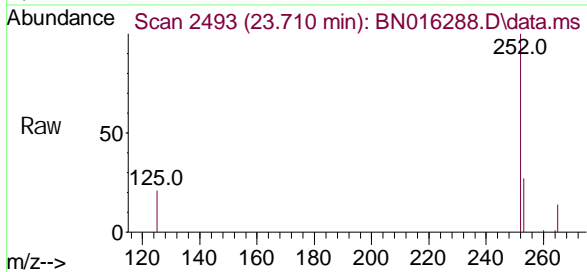


Benzo(a)pyrene
Concen: 0.442 ng
RT: 23.710 min Scan# 2493
Delta R.T. 0.000 min
Lab File: BN016288.D
Acq: 10 Sep 2021 13:00

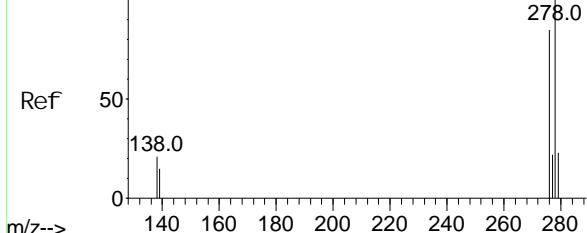
Instrument :
BNA_N
ClientSampled :
SSTDCCC0.4

Tgt Ion: 252 Resp: 38981

Ion	Ratio	Lower	Upper
252	100		
253	26.7	18.7	28.1
125	20.9	9.9	14.9#



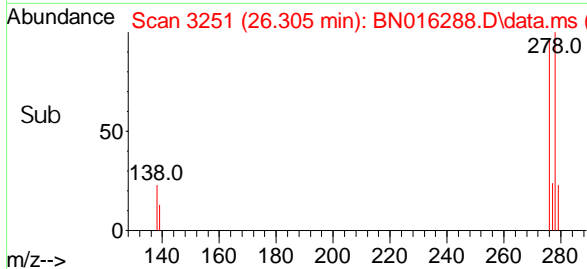
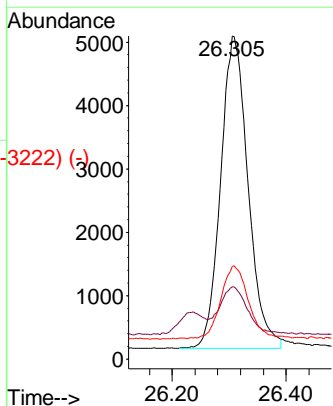
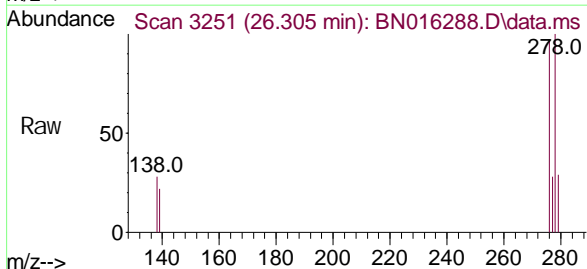
Abundance Scan 3252 (26.308 min): BN016256.D\data.ms (-3221) (-)



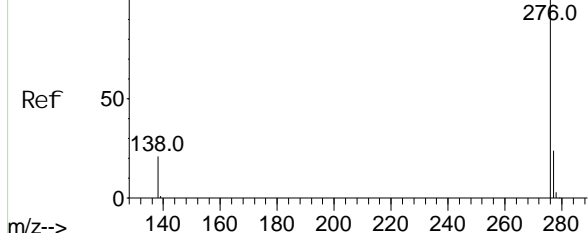
Di benzo(a, h)anthracene
Concen: 0.419 ng
RT: 26.305 min Scan# 3251
Delta R.T. 0.000 min
Lab File: BN016288.D
Acq: 10 Sep 2021 13:00

Tgt Ion: 278 Resp: 16386

Ion	Ratio	Lower	Upper
278	100		
139	22.4	14.2	21.2#
279	28.6	21.3	31.9

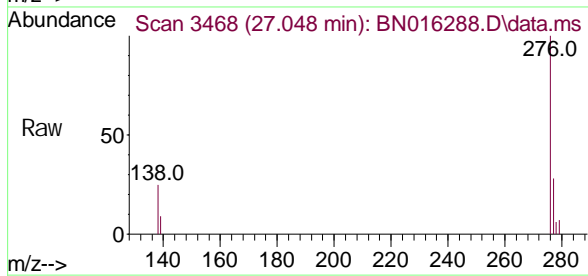


Abundance Scan 3467 (27.044 min): BN016256.D\data.ms (-3442) (-)



Benzo(g, h, i)perylene
 Concen: 0.389 ng
 RT: 27.048 min Scan# 3468
 Delta R.T. 0.000 min
 Lab File: BN016288.D
 Acq: 10 Sep 2021 13:00

Instrument :
 BNA_N
ClientSampled :
 SSTDCCC0.4



Tgt Ion: 276 Resp: 16520

Ion	Ratio	Lower	Upper
276	100		
277	27.6	20.5	30.7
138	25.4	18.2	27.4

