

Data Path : Z:\SVOASRV\HPCHEM1\BNA_N\DATA\BN091318\
 Data File : BN002681.D
 Acq On : 13 Sep 2018 19:10
 Operator : JU/SJ
 Sample : J4864-01DL 20X
 Misc :
 ALS Vial : 12 Sample Multiplier: 1

Instrument :
 BNA_N
 ClientSampleID :
 C0D07DL

Integration Parameters: LSCINT.P
 Integrator: RTE
 Smoothing : OFF Filtering: 5
 Sampling : 1 Min Area: 1 % of largest Peak
 Start Thrs: 0.2 Max Peaks: 100
 Stop Thrs : 0 Peak Location: TOP

If leading or trailing edge < 100 prefer < Baseline drop else tangent >
 Peak separation: 5

Method : Z:\SVOASRV\HPCHEM1\BNA_N\METHODS\SOM-EPA-BN081318MA.M
 Title : SVOA CALIBRATION

Signal : TIC

peak #	R.T. min	first scan	max scan	last scan	PK TY	peak height	corr. area	corr. % max.	% of total
1	3.205	31	37	68	rVB	13878723	25402055	100.00%	55.784%
2	5.211	372	378	388	rVB	526673	805676	3.17%	1.769%
3	5.340	394	400	412	rBV	1530269	2889701	11.38%	6.346%
4	5.705	455	462	473	rBV	679604	1084787	4.27%	2.382%
5	7.658	787	794	801	rBV	464448	739821	2.91%	1.625%
6	8.105	864	870	883	rVB	673922	1107430	4.36%	2.432%
7	8.434	920	926	943	rVB	231389	479311	1.89%	1.053%
8	9.622	1122	1128	1132	rBV	368054	677558	2.67%	1.488%
9	9.658	1132	1134	1140	rVV2	234535	309876	1.22%	0.681%
10	9.893	1167	1174	1179	rBV	349267	714227	2.81%	1.568%
11	10.081	1198	1206	1213	rBV2	201121	361484	1.42%	0.794%
12	10.428	1258	1265	1271	rBV	711205	1175817	4.63%	2.582%
13	11.304	1394	1414	1427	rBV	546334	1918361	7.55%	4.213%
14	14.293	1915	1922	1929	rBV2	1091539	1663102	6.55%	3.652%
15	17.045	2383	2390	2401	rBV2	1383493	2059595	8.11%	4.523%
16	21.245	3098	3104	3110	rBV	1604797	2083224	8.20%	4.575%
17	23.339	3454	3460	3466	rVB2	151836	347946	1.37%	0.764%
18	23.463	3475	3481	3490	rVB	895472	1716167	6.76%	3.769%

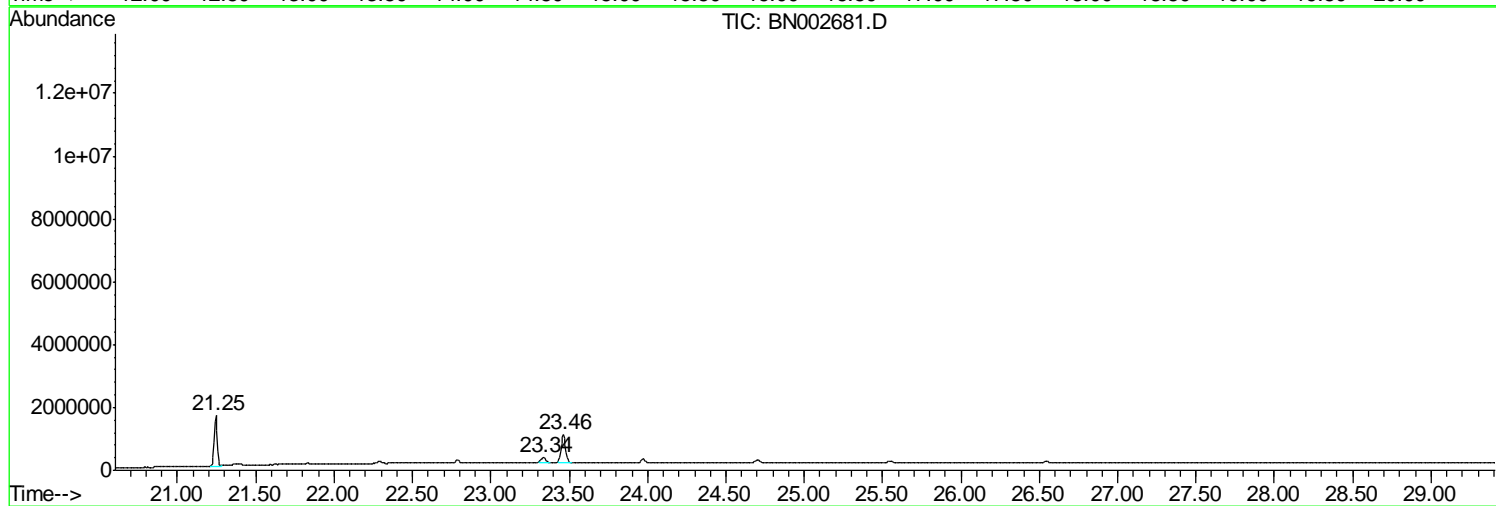
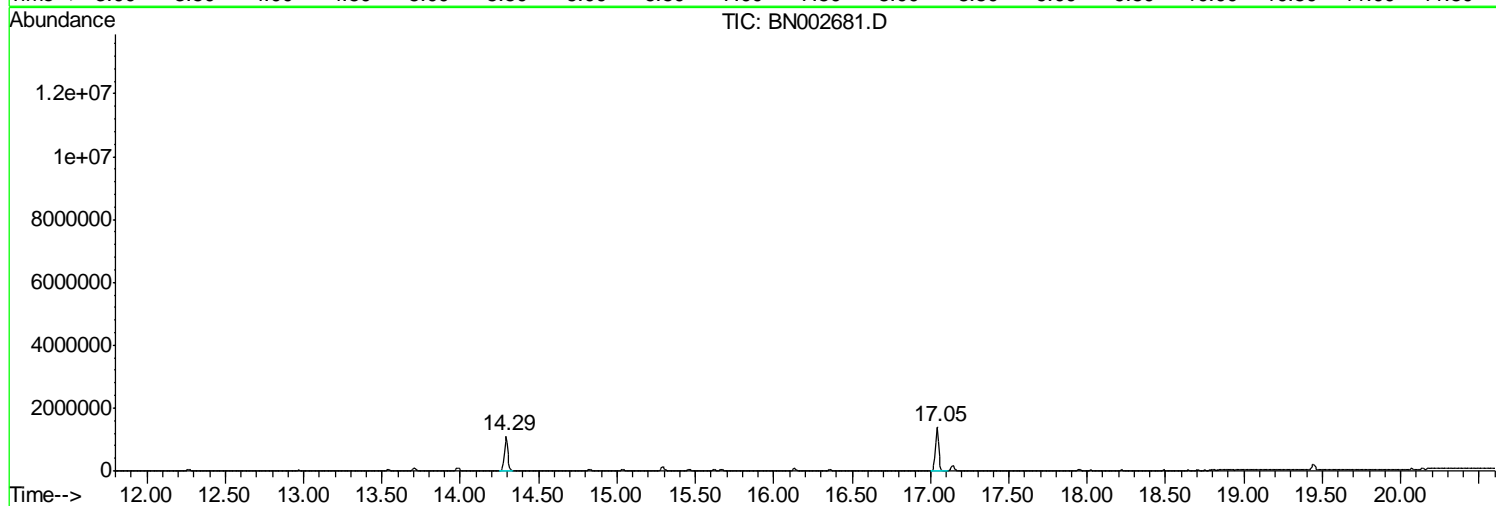
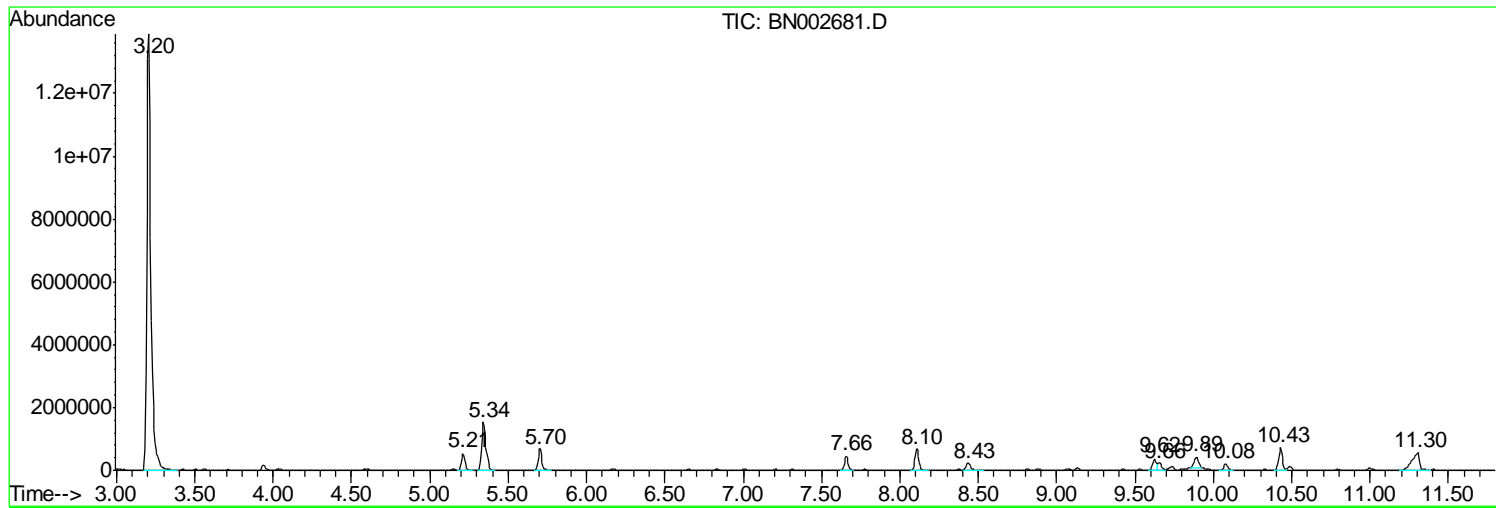
Sum of corrected areas: 45536138

Data Path : Z:\SVOASRV\HPCHEM1\BNA N\DATA\BN091318\
Data File : BN002681.D
Acq On : 13 Sep 2018 19:10
Operator : JU/SJ
Sample : J4864-01DL 20X
Misc :
ALS Vial : 12 Sample Multiplier: 1

Instrument :
BNA_N
ClientSampleId :
C0D07DL

Quant Method : Z:\SVOASRV\HPCHEM1\BNA_N\METHODS\SOM-EPA-BN081318MA.M
Quant Title : SVOA CALIBRATION

TIC Library : C:\Database\NIST11.L
TIC Integration Parameters: LSCINT.P



Data Path : Z:\SVOASRV\HPCHEM1\BNA N\DATA\BN091318\
 Data File : BN002681.D
 Acq On : 13 Sep 2018 19:10
 Operator : JU/SJ
 Sample : J4864-01DL 20X
 Misc :
 ALS Vial : 12 Sample Multiplier: 1

Instrument :
 BNA_N
 ClientSampleID :
 C0D07DL

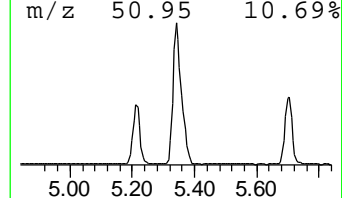
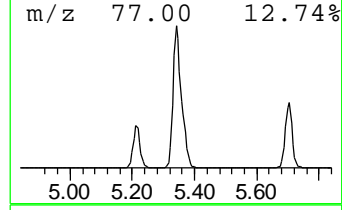
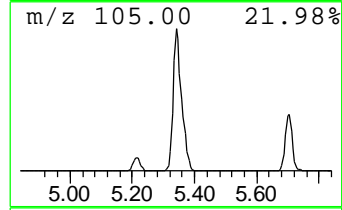
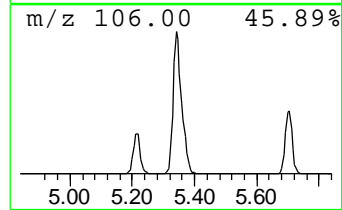
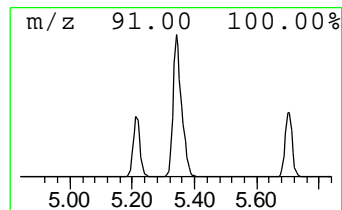
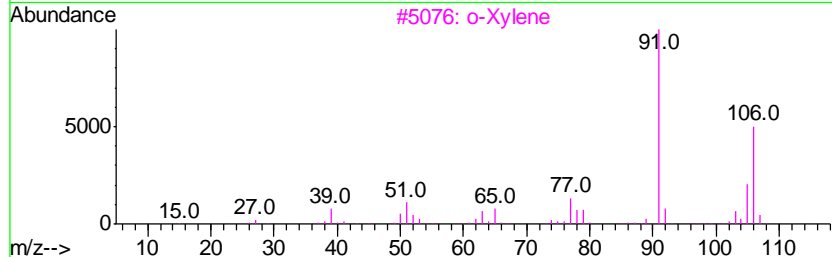
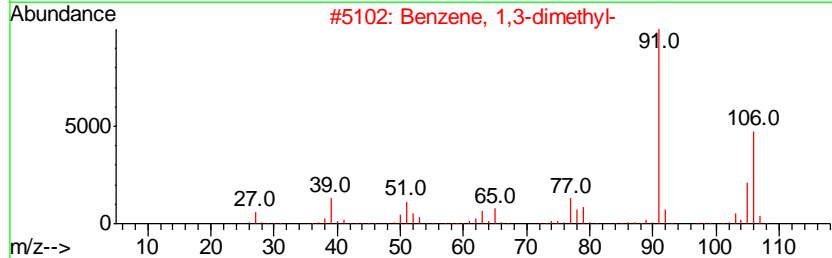
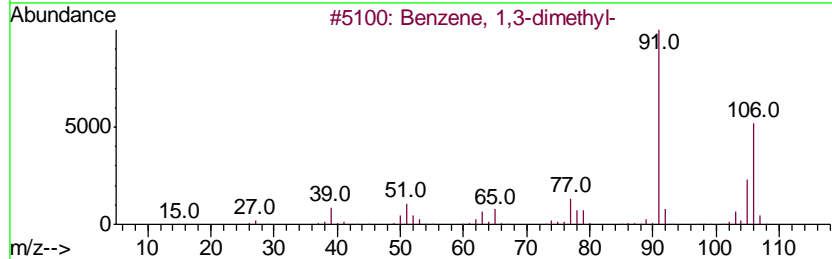
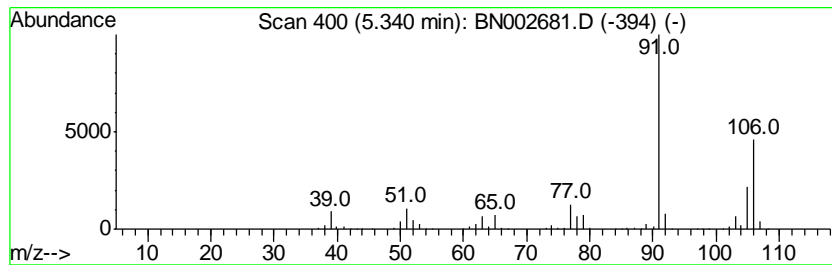
Quant Method : Z:\SVOASRV\HPCHEM1\BNA_N\METHODS\SOM-EPA-BN081318MA.M
 Quant Title : SVOA CALIBRATION

TIC Library : C:\Database\NIST11.L
 TIC Integration Parameters: LSCINT.P

 Peak Number 3 Benzene, 1,3-dimethyl- Concentration Rank 2

R.T.	EstConc	Area	Relative to ISTD	R.T.
5.34	78.12 ng/ul	2889700	1,4-Dichlorobenzene-d4	7.66

Hit#	of	Tentative ID	MW	MolForm	CAS#	Qual
1	5	Benzene, 1,3-dimethyl-	106	C8H10	000108-38-3	97
2		Benzene, 1,3-dimethyl-	106	C8H10	000108-38-3	97
3		o-Xylene	106	C8H10	000095-47-6	97
4		p-Xylene	106	C8H10	000106-42-3	97
5		p-Xylene	106	C8H10	000106-42-3	97



Data Path : Z:\SVOASRV\HPCHEM1\BNA N\DATA\BN091318\
 Data File : BN002681.D
 Acq On : 13 Sep 2018 19:10
 Operator : JU/SJ
 Sample : J4864-01DL 20X
 Misc :
 ALS Vial : 12 Sample Multiplier: 1

Instrument :
 BNA_N
 ClientSampleID :
 C0D07DL

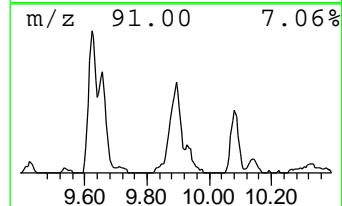
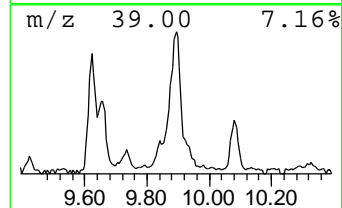
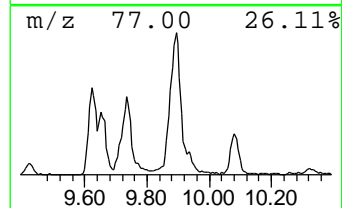
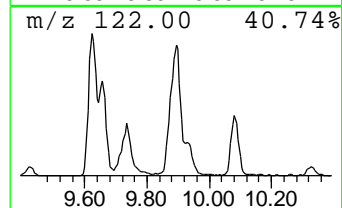
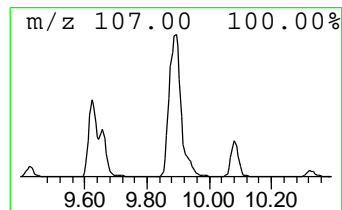
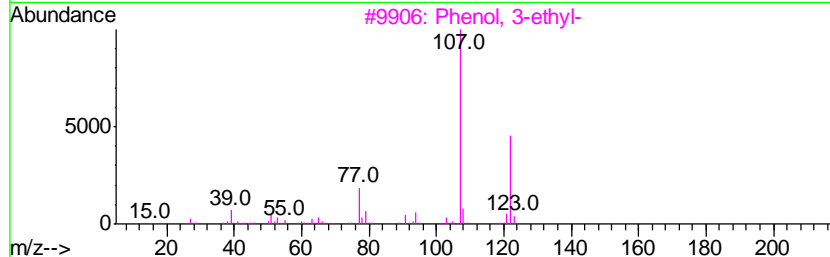
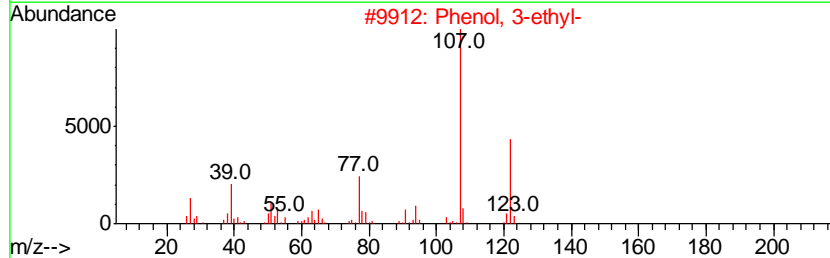
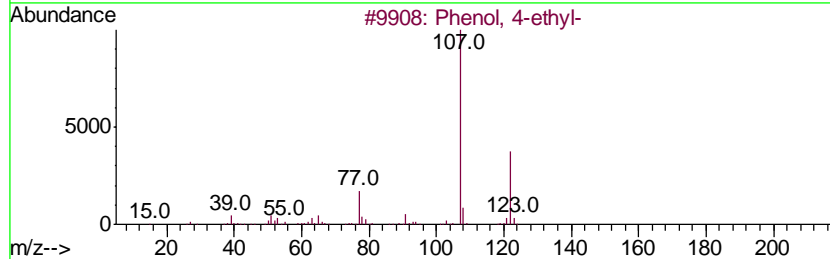
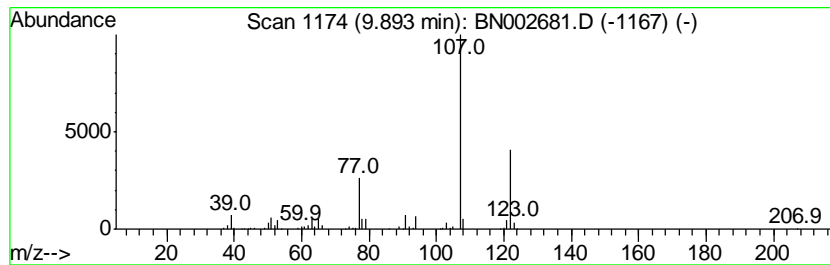
Quant Method : Z:\SVOASRV\HPCHEM1\BNA_N\METHODS\SOM-EPA-BN081318MA.M
 Quant Title : SVOA CALIBRATION

TIC Library : C:\Database\NIST11.L
 TIC Integration Parameters: LSCINT.P

 Peak Number 5 Phenol, 4-ethyl- Concentration Rank 6

R.T.	EstConc	Area	Relative to ISTD	R.T.
9.89	12.15 ng/ul	714227	Naphthalene-d8	10.43

Hit#	of	Tentative ID	MW	MolForm	CAS#	Qual
1	5	Phenol, 4-ethyl-	122	C8H10O	000123-07-9	91
2		Phenol, 3-ethyl-	122	C8H10O	000620-17-7	90
3		Phenol, 3-ethyl-	122	C8H10O	000620-17-7	90
4		Phenol, 4-ethyl-	122	C8H10O	000123-07-9	87
5		Phenol, 2-ethyl-	122	C8H10O	000090-00-6	86



Data Path : Z:\SVOASRV\HPCHEM1\BNA N\DATA\BN091318\
 Data File : BN002681.D
 Acq On : 13 Sep 2018 19:10
 Operator : JU/SJ
 Sample : J4864-01DL 20X
 Misc :
 ALS Vial : 12 Sample Multiplier: 1

Instrument :
 BNA_N
 ClientSampled :
 C0D07DL

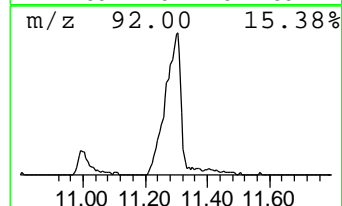
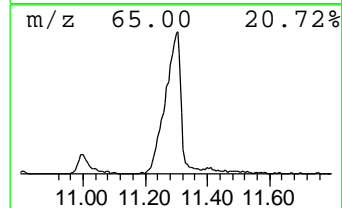
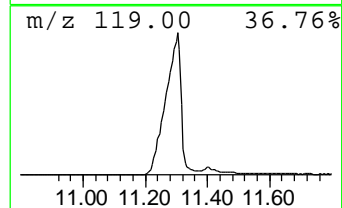
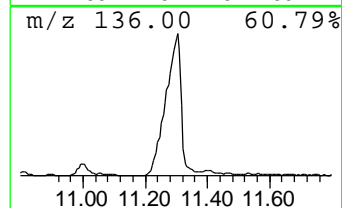
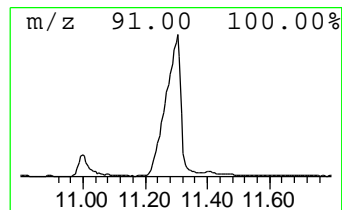
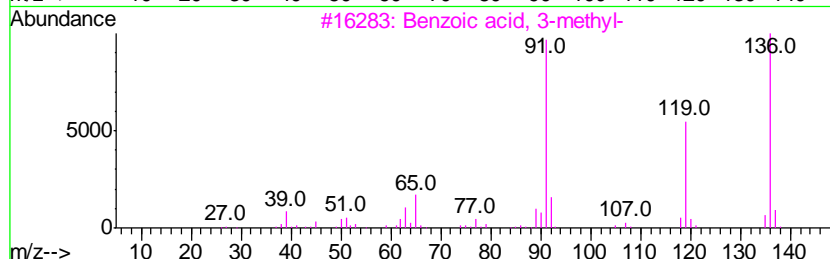
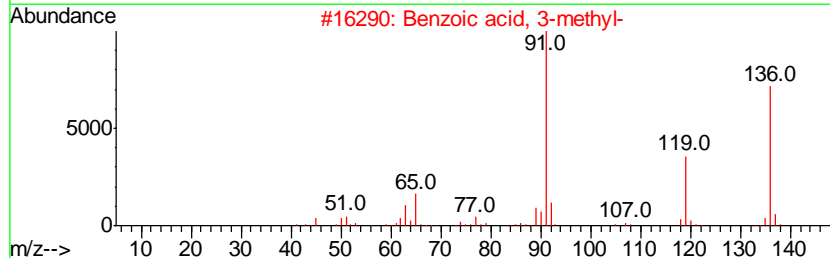
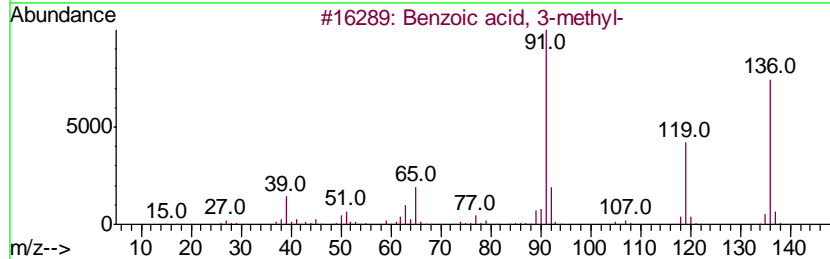
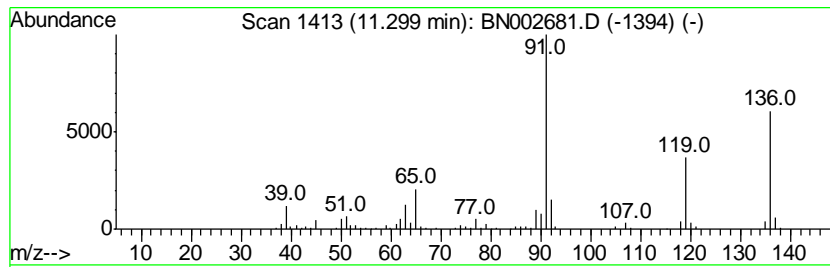
Quant Method : Z:\SVOASRV\HPCHEM1\BNA_N\METHODS\SOM-EPA-BN081318MA.M
 Quant Title : SVOA CALIBRATION

TIC Library : C:\Database\NIST11.L
 TIC Integration Parameters: LSCINT.P

 Peak Number 6 Benzoic acid, 3-methyl- Concentration Rank 3

R.T.	EstConc	Area	Relative to ISTD	R.T.
11.30	32.63 ng/ul	1918360	Naphthalene-d8	10.43

Hit#	of	Tentative ID	MW	MolForm	CAS#	Qual
1	5	Benzoic acid, 3-methyl-	136	C8H8O2	000099-04-7	96
2		Benzoic acid, 3-methyl-	136	C8H8O2	000099-04-7	96
3		Benzoic acid, 3-methyl-	136	C8H8O2	000099-04-7	95
4		Benzoic acid, 4-methyl-	136	C8H8O2	000099-94-5	91
5		Benzoic acid, 4-methyl-	136	C8H8O2	000099-94-5	91



Data Path : Z:\SVOASRV\HPCHEM1\BNA_N\DATA\BN091318\
Data File : BN002681.D
Acq On : 13 Sep 2018 19:10
Operator : JU/SJ
Sample : J4864-01DL 20X
Misc :
ALS Vial : 12 Sample Multiplier: 1

Instrument :
BNA_N
ClientSampleId :
C0D07DL

Quant Method : Z:\SVOASRV\HPCHEM1\BNA_N\METHODS\SOM-EPA-BN081318MA.M
Quant Title : SVOA CALIBRATION

TIC Library : C:\Database\NIST11.L
TIC Integration Parameters: LSCINT.P

TIC Top Hit name	RT	EstConc	Units	Response	--Internal Standard--			
					#	RT	Resp	Conc
Benzene, 1,3-dime...	5.34	78.1	ng/ul	2889700	1	7.66	739821	20.0
Phenol, 4-ethyl-	9.89	12.2	ng/ul	714227	2	10.43	1175820	20.0
Benzoic acid, 3-m...	11.30	32.6	ng/ul	1918360	2	10.43	1175820	20.0