

Data Path : Z:\svoasrv\HPCHEM1\BNA_N\Data\BN092024\
 Data File : BN034075.D
 Acq On : 20 Sep 2024 07:47
 Operator : JU/RC
 Sample : P3957-12
 Misc :
 ALS Vial : 31 Sample Multiplier: 1

Instrument :
 BNA_N
 ClientSampleId :
 MW203D1-20240910

Quant Time: Sep 20 08:15:43 2024
 Quant Method : Z:\svoasrv\HPCHEM1\BNA_N\Methods\8270-SIM-BN091924.M
 Quant Title : ASP BNA STANDARDS FOR 5 POINT CALIBRATION
 QLast Update : Wed Sep 18 16:09:28 2024
 Response via : Initial Calibration

Compound	R.T.	QIon	Response	Conc	Units	Dev(Min)

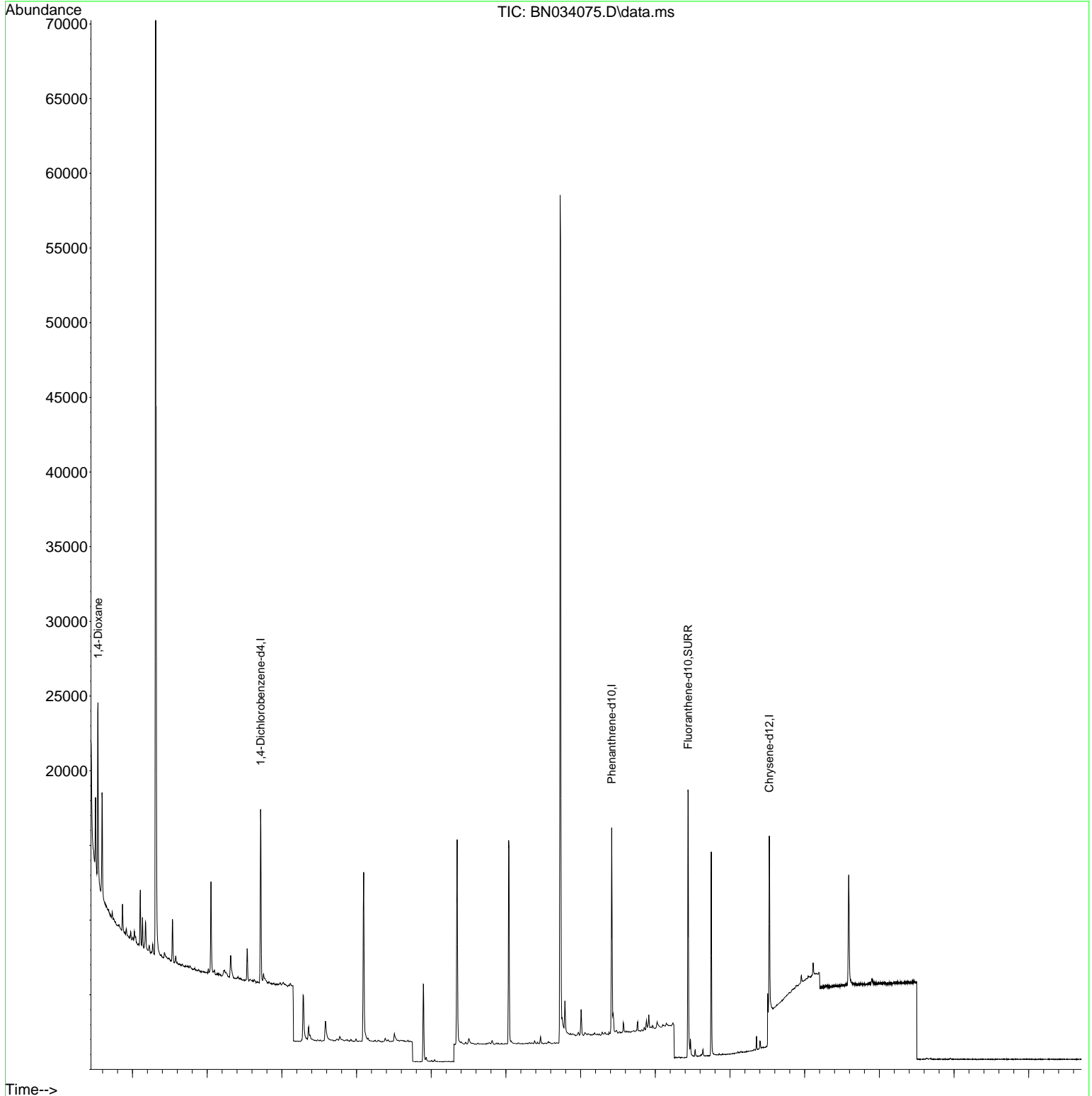
Internal Standards						
1) 1,4-Dichlorobenzene-d4	7.430	152	5499	0.400	ng	0.00
7) Naphthalene-d8	10.191	136	15572	0.400	ng	0.00
13) Acenaphthene-d10	14.083	164	8544	0.400	ng	0.00
19) Phenanthrene-d10	16.833	188	18106	0.400	ng	# 0.00
29) Chrysene-d12	21.053	240	11708	0.400	ng	0.00
35) Perylene-d12	23.180	264	9662	0.400	ng	# 0.00
System Monitoring Compounds						
4) 2-Fluorophenol	5.076	112	2184	0.140	ng	0.00
5) Phenol-d6	6.629	99	1424	0.078	ng	0.00
8) Nitrobenzene-d5	8.568	82	3460	0.290	ng	0.00
11) 2-Methylnaphthalene-d10	11.787	152	7690	0.334	ng	0.00
14) 2,4,6-Tribromophenol	15.579	330	1093	0.282	ng	0.00
15) 2-Fluorobiphenyl	12.693	172	12011	0.346	ng	0.00
27) Fluoranthene-d10	18.880	212	19756	0.432	ng	0.00
31) Terphenyl-d14	19.498	244	12381	0.529	ng	0.00
Target Compounds						
2) 1,4-Dioxane	3.075	88	6753	0.982	ng	# 75
25) Phenanthrene	16.870	178	1193	0.023	ng	95

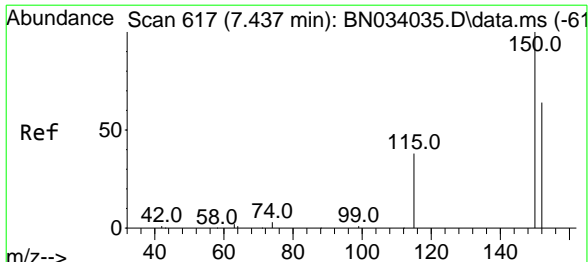
(#) = qualifier out of range (m) = manual integration (+) = signals summed

Data Path : Z:\svoasrv\HPCHEM1\BNA_N\Data\BN092024\
 Data File : BN034075.D
 Acq On : 20 Sep 2024 07:47
 Operator : JU/RC
 Sample : P3957-12
 Misc :
 ALS Vial : 31 Sample Multiplier: 1

Instrument :
 BNA_N
 ClientSampleId :
 MW203D1-20240910

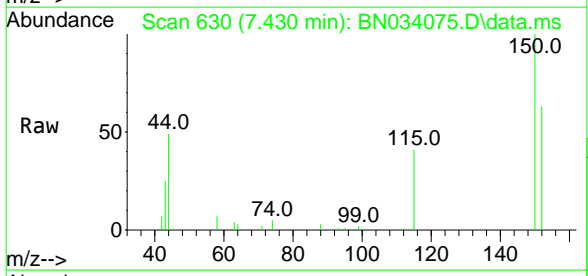
Quant Time: Sep 20 08:15:43 2024
 Quant Method : Z:\svoasrv\HPCHEM1\BNA_N\Methods\8270-SIM-BN091924.M
 Quant Title : ASP BNA STANDARDS FOR 5 POINT CALIBRATION
 QLast Update : Wed Sep 18 16:09:28 2024
 Response via : Initial Calibration



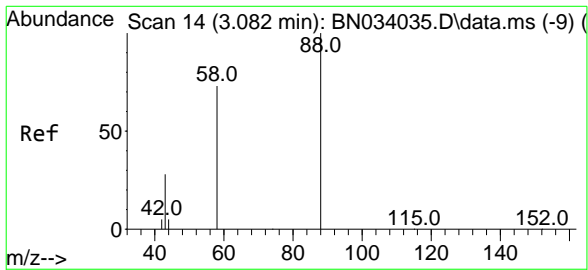
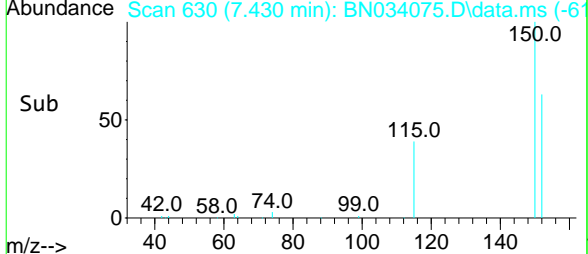
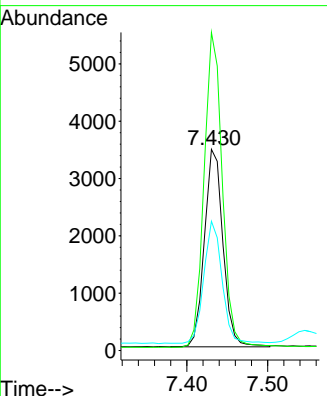


#1
 1,4-Dichlorobenzene-d4
 Concen: 0.400 ng
 RT: 7.430 min Scan# 63
 Delta R.T. -0.007 min
 Lab File: BN034075.D
 Acq: 20 Sep 2024 07:47

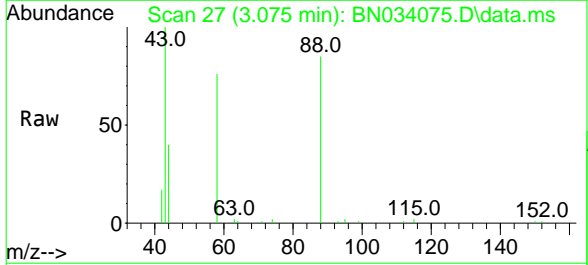
Instrument : BNA_N
 ClientSampleId : MW203D1-20240910



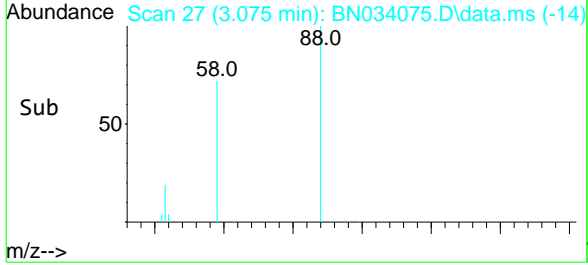
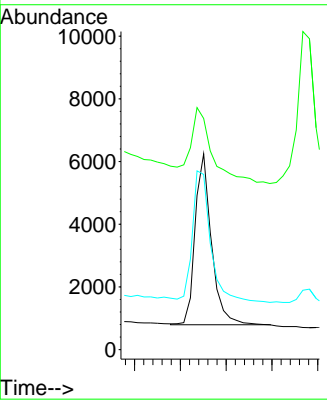
Tgt Ion: 152 Resp: 5499
 Ion Ratio Lower Upper
 152 100
 150 158.1 124.6 187.0
 115 64.2 50.0 75.0

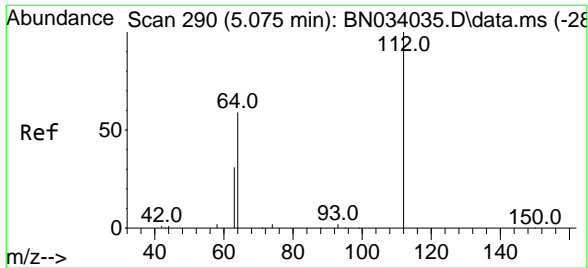


#2
 1,4-Dioxane
 Concen: 0.982 ng
 RT: 3.075 min Scan# 27
 Delta R.T. -0.006 min
 Lab File: BN034075.D
 Acq: 20 Sep 2024 07:47



Tgt Ion: 88 Resp: 6753
 Ion Ratio Lower Upper
 88 100
 43 59.3 25.8 38.8
 58 86.5 58.8 88.2

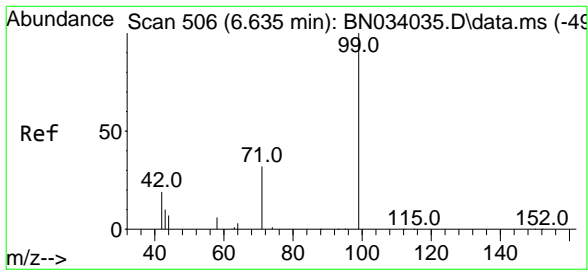
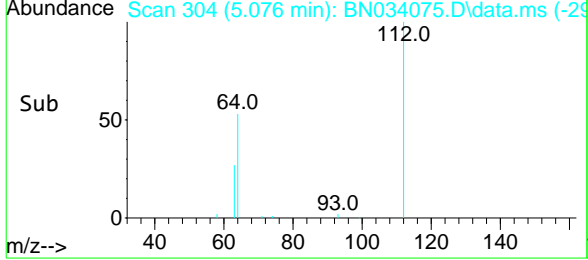
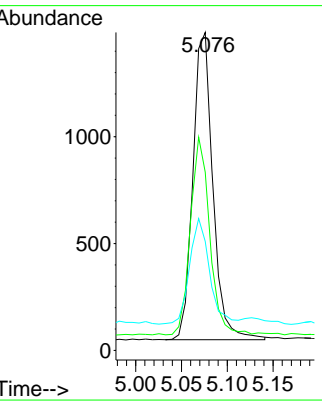
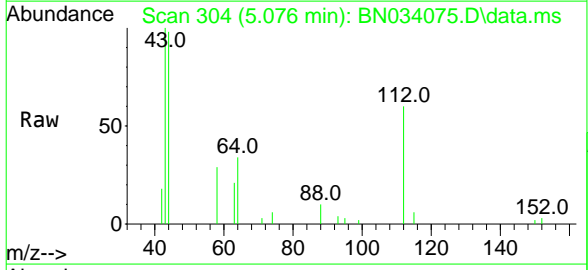




#4
 2-Fluorophenol
 Concen: 0.140 ng
 RT: 5.076 min Scan# 304
 Delta R.T. 0.001 min
 Lab File: BN034075.D
 Acq: 20 Sep 2024 07:47

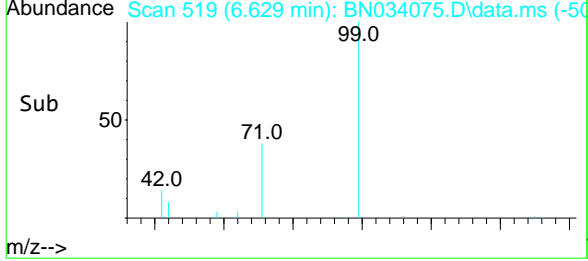
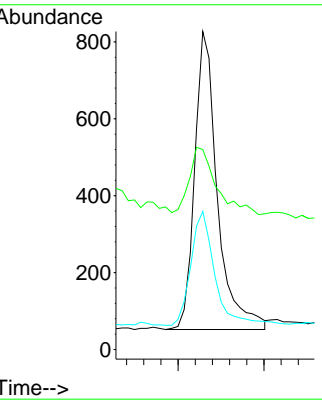
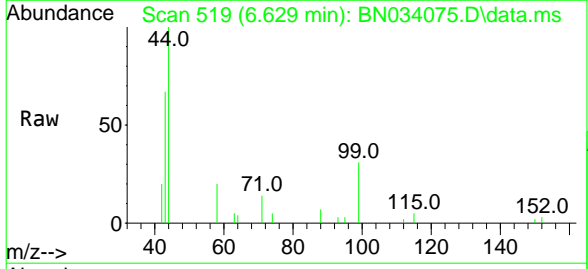
Instrument : BNA_N
 ClientSampleId : MW203D1-20240910

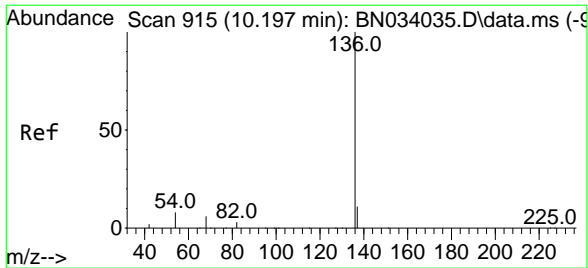
Tgt Ion	Ratio	Lower	Upper
112	100		
64	62.4	48.6	72.8
63	34.2	25.6	38.4



#5
 Phenol-d6
 Concen: 0.078 ng
 RT: 6.629 min Scan# 519
 Delta R.T. -0.006 min
 Lab File: BN034075.D
 Acq: 20 Sep 2024 07:47

Tgt Ion	Ratio	Lower	Upper
99	100		
42	26.8	17.8	26.8
71	39.8	26.2	39.2

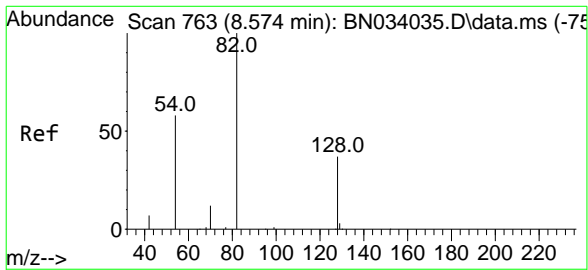
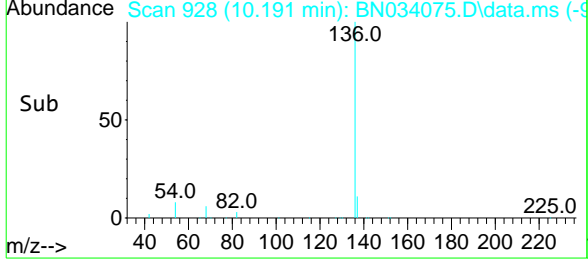
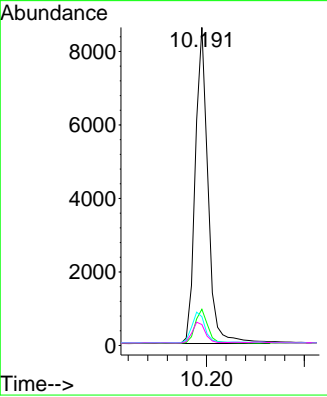
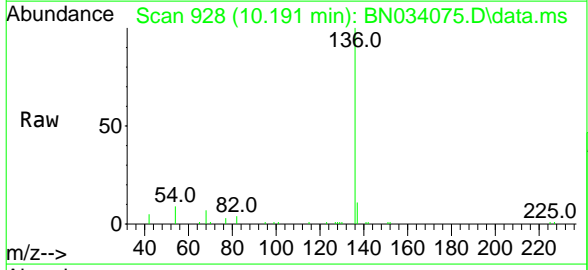




#7
 Naphthalene-d8
 Concen: 0.400 ng
 RT: 10.191 min Scan# 92
 Delta R.T. -0.006 min
 Lab File: BN034075.D
 Acq: 20 Sep 2024 07:47

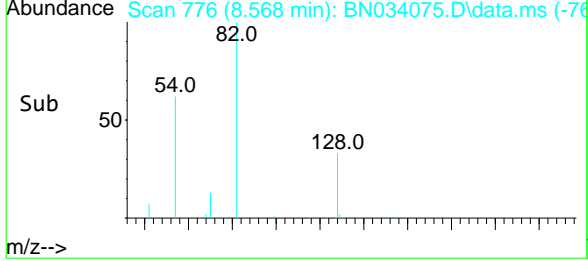
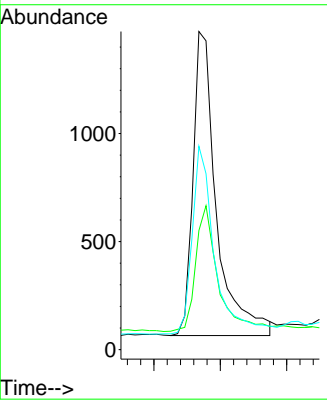
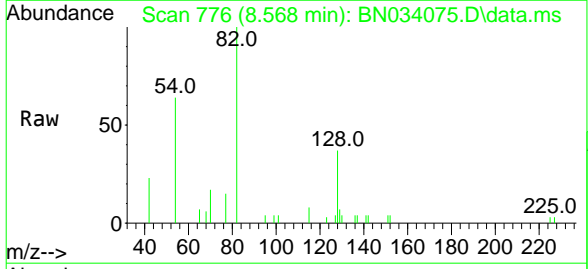
Instrument : BNA_N
 ClientSampleId : MW203D1-20240910

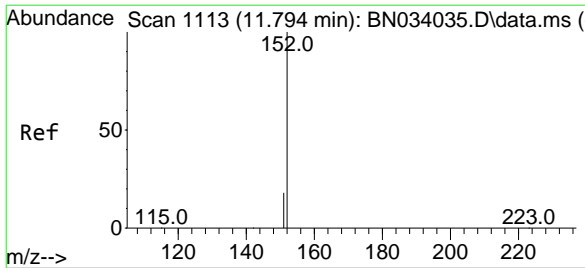
Tgt Ion	Ratio	Lower	Upper
136	100		
137	11.4	9.0	13.6
54	9.0	6.8	10.2
68	6.6	5.0	7.6



#8
 Nitrobenzene-d5
 Concen: 0.290 ng
 RT: 8.568 min Scan# 776
 Delta R.T. -0.006 min
 Lab File: BN034075.D
 Acq: 20 Sep 2024 07:47

Tgt Ion	Ratio	Lower	Upper
82	100		
128	37.4	31.4	47.2
54	63.9	47.4	71.0

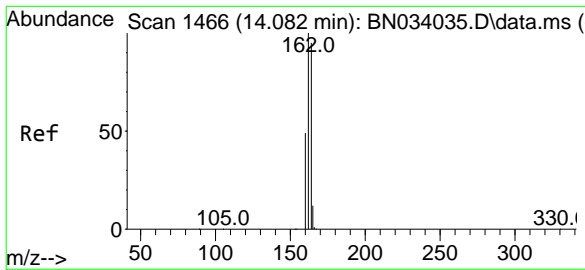
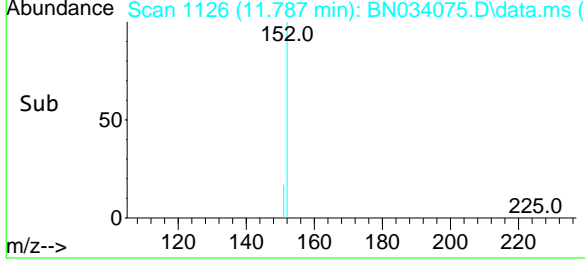
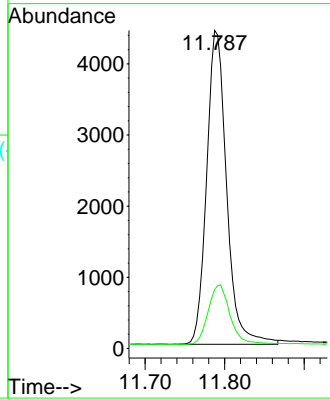
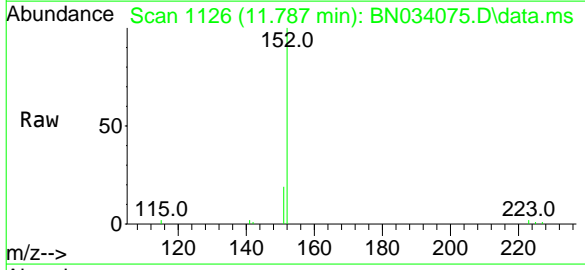




#11
 2-Methylnaphthalene-d10
 Concen: 0.334 ng
 RT: 11.787 min Scan# 1113
 Delta R.T. -0.006 min
 Lab File: BN034075.D
 Acq: 20 Sep 2024 07:47

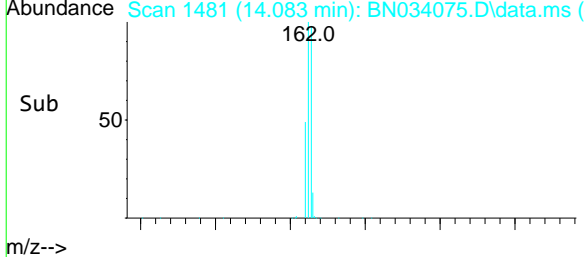
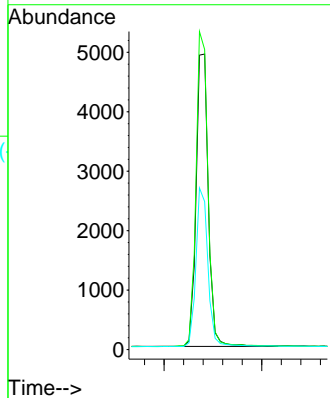
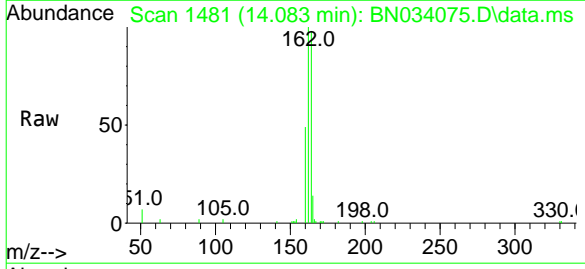
Instrument :
 BNA_N
 ClientSampleId :
 MW203D1-20240910

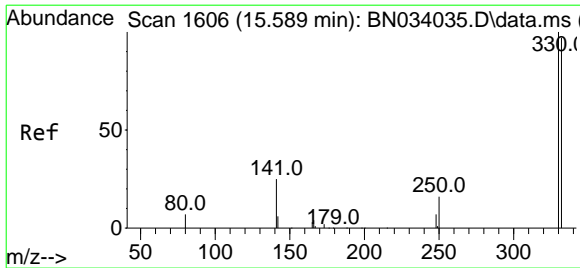
Tgt Ion:152 Resp: 7690
 Ion Ratio Lower Upper
 152 100
 151 20.9 16.8 25.2



#13
 Acenaphthene-d10
 Concen: 0.400 ng
 RT: 14.083 min Scan# 1481
 Delta R.T. 0.001 min
 Lab File: BN034075.D
 Acq: 20 Sep 2024 07:47

Tgt Ion:164 Resp: 8544
 Ion Ratio Lower Upper
 164 100
 162 101.5 84.2 126.2
 160 50.1 41.7 62.5

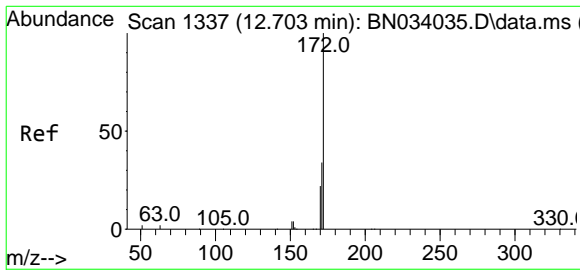
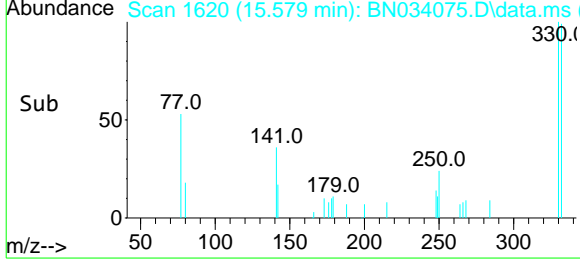
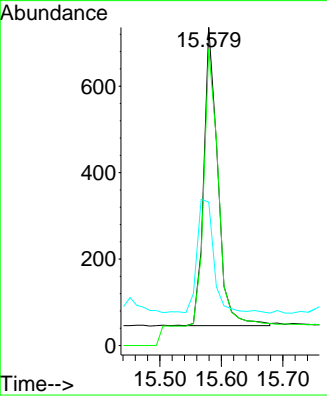
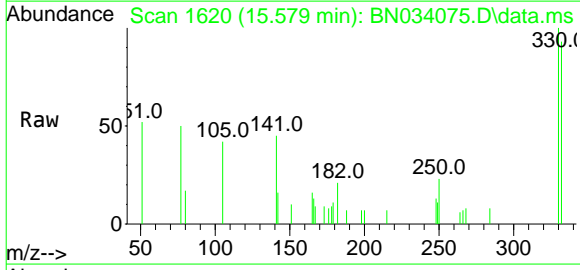




#14
 2,4,6-Tribromophenol
 Concen: 0.282 ng
 RT: 15.579 min Scan# 1606
 Delta R.T. -0.009 min
 Lab File: BN034075.D
 Acq: 20 Sep 2024 07:47

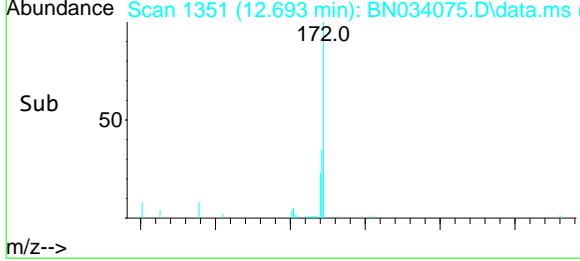
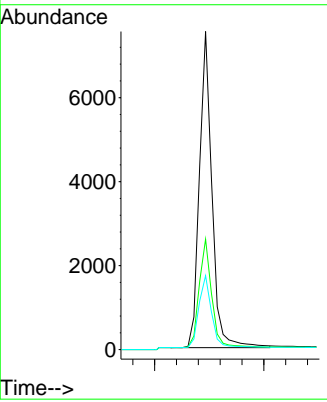
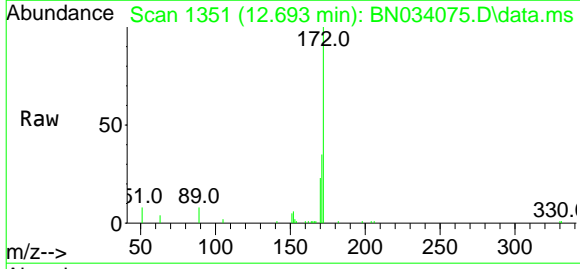
Instrument : BNA_N
 ClientSampleId : MW203D1-20240910

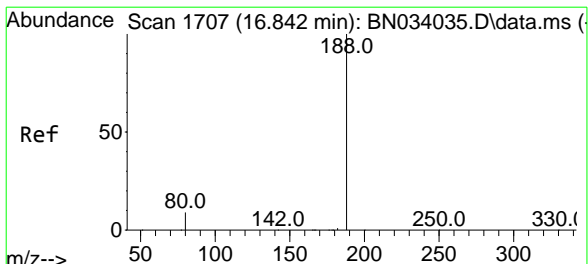
Tgt Ion	Resp	Ion Ratio	Lower	Upper
330	1093	100		
332	97.0	77.4	116.0	
141	45.7	35.9	53.9	



#15
 2-Fluorobiphenyl
 Concen: 0.346 ng
 RT: 12.693 min Scan# 1351
 Delta R.T. -0.009 min
 Lab File: BN034075.D
 Acq: 20 Sep 2024 07:47

Tgt Ion	Resp	Ion Ratio	Lower	Upper
172	12011	100		
171	34.7	27.3	40.9	
170	23.2	18.1	27.1	



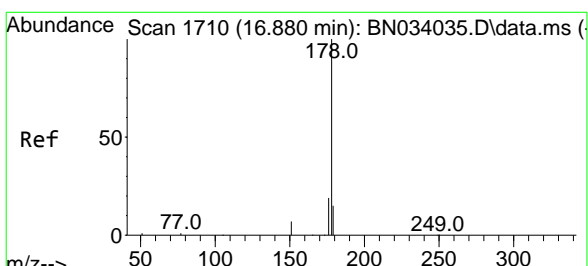
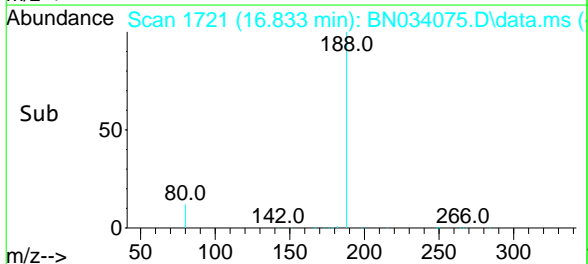
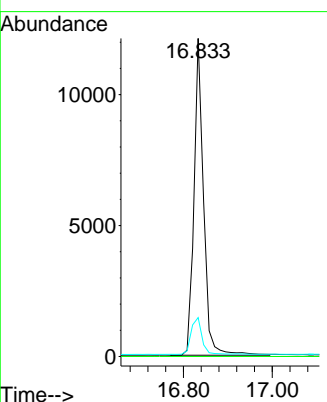
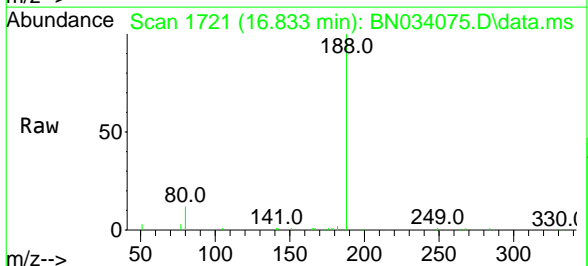


#19
 Phenanthrene-d10
 Concen: 0.400 ng
 RT: 16.833 min Scan# 17
 Delta R.T. -0.009 min
 Lab File: BN034075.D
 Acq: 20 Sep 2024 07:47

Instrument : BNA_N
 ClientSampleId : MW203D1-20240910

Tgt Ion:188 Resp: 18106

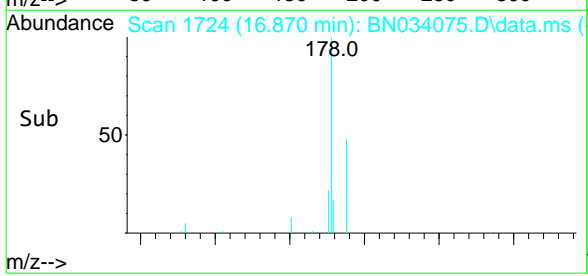
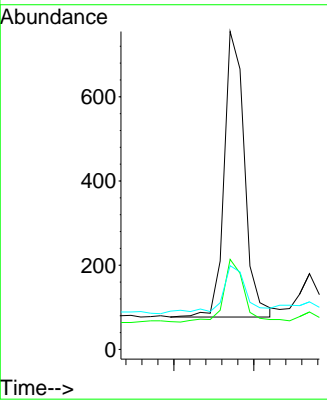
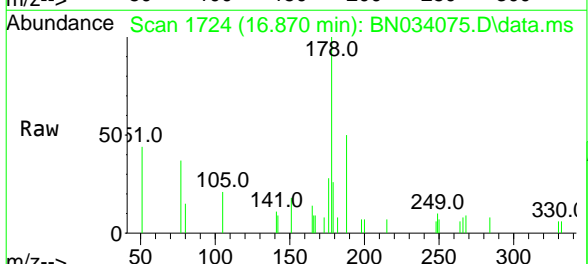
Ion	Ratio	Lower	Upper
188	100		
94	0.0	0.0	0.0
80	12.2	7.4	11.0#

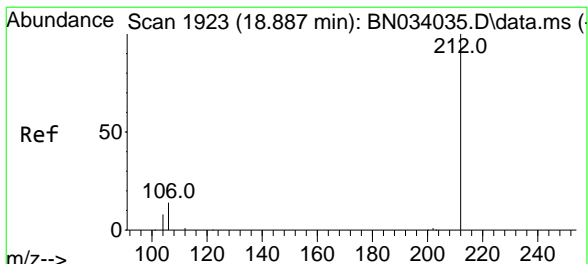


#25
 Phenanthrene
 Concen: 0.023 ng
 RT: 16.870 min Scan# 1724
 Delta R.T. -0.009 min
 Lab File: BN034075.D
 Acq: 20 Sep 2024 07:47

Tgt Ion:178 Resp: 1193

Ion	Ratio	Lower	Upper
178	100		
176	21.7	15.3	22.9
179	16.3	12.1	18.1

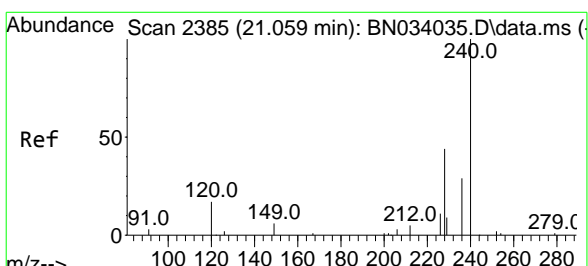
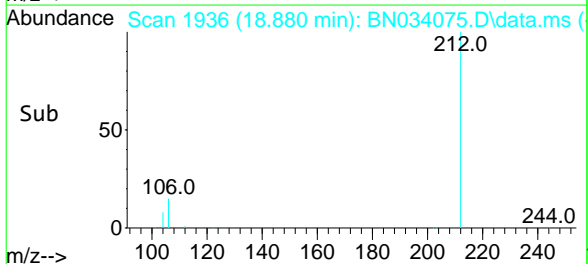
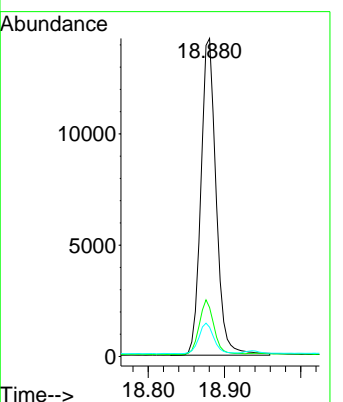
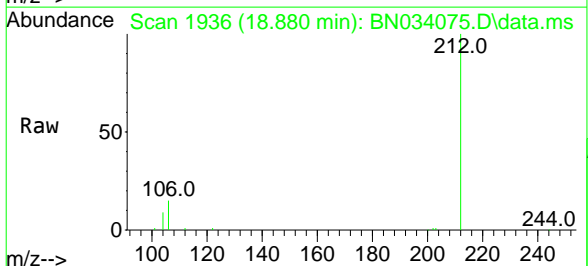




#27
 Fluoranthene-d10
 Concen: 0.432 ng
 RT: 18.880 min Scan# 19
 Delta R.T. -0.006 min
 Lab File: BN034075.D
 Acq: 20 Sep 2024 07:47

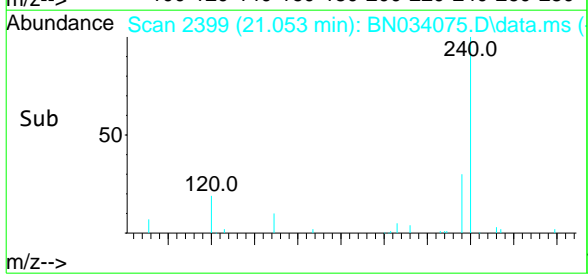
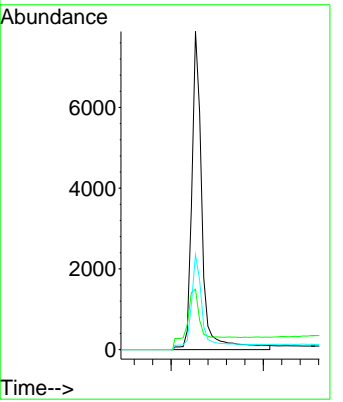
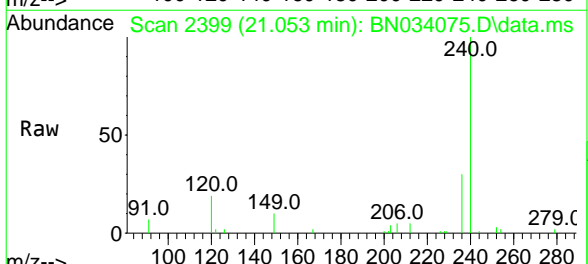
Instrument :
 BNA_N
 ClientSampleId :
 MW203D1-20240910

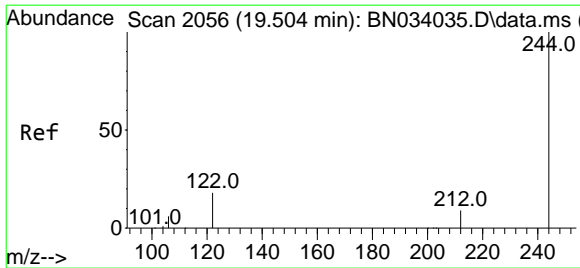
Tgt Ion	Ratio	Lower	Upper
212	100		
106	16.6	13.4	20.2
104	9.4	7.8	11.6



#29
 Chrysene-d12
 Concen: 0.400 ng
 RT: 21.053 min Scan# 2399
 Delta R.T. -0.006 min
 Lab File: BN034075.D
 Acq: 20 Sep 2024 07:47

Tgt Ion	Ratio	Lower	Upper
240	100		
120	19.0	13.5	20.3
236	29.8	23.4	35.0

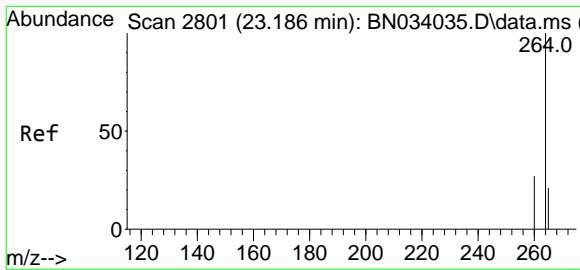
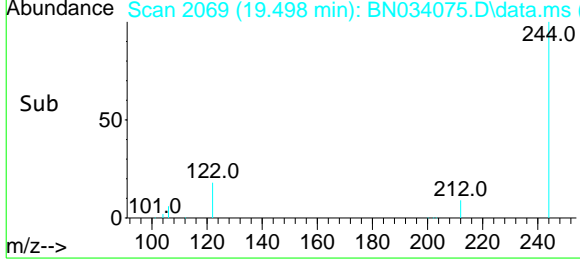
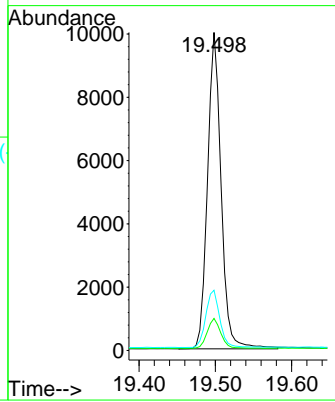
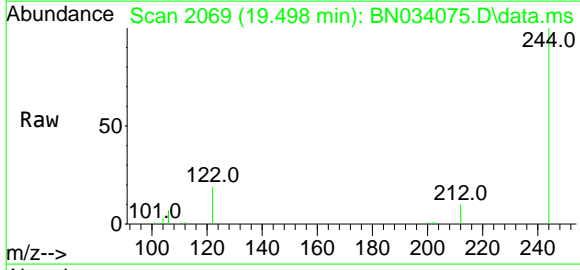




#31
 Terphenyl-d14
 Concen: 0.529 ng
 RT: 19.498 min Scan# 2069
 Delta R.T. -0.006 min
 Lab File: BN034075.D
 Acq: 20 Sep 2024 07:47

Instrument : BNA_N
 ClientSampleId : MW203D1-20240910

Tgt Ion	Ratio	Lower	Upper
244	100		
212	10.1	7.8	11.6
122	18.9	14.8	22.2



#35
 Perylene-d12
 Concen: 0.400 ng
 RT: 23.180 min Scan# 2815
 Delta R.T. -0.006 min
 Lab File: BN034075.D
 Acq: 20 Sep 2024 07:47

Tgt Ion	Ratio	Lower	Upper
264	100		
260	26.9	21.7	32.5
265	87.4	52.1	78.1#

