

Data Path : Z:\svoasrv\HPCHEM1\BNA\_N\Data\BN092223\  
 Data File : BN027839.D  
 Acq On : 22 Sep 2023 23:59  
 Operator : MA/JU  
 Sample : 04387-13  
 Misc :  
 ALS Vial : 58 Sample Multiplier: 1

Instrument :  
 BNA\_N  
 ClientSampleId :  
 C0AF4

Quant Time: Sep 23 03:50:19 2023  
 Quant Method : Z:\svoasrv\HPCHEM1\BNA\_N\Methods\SFAM-EPA-SIM-BN091523.M  
 Quant Title : ASP BNA STANDARDS FOR 5 POINT CALIBRATION  
 QLast Update : Fri Sep 22 03:58:00 2023  
 Response via : Initial Calibration

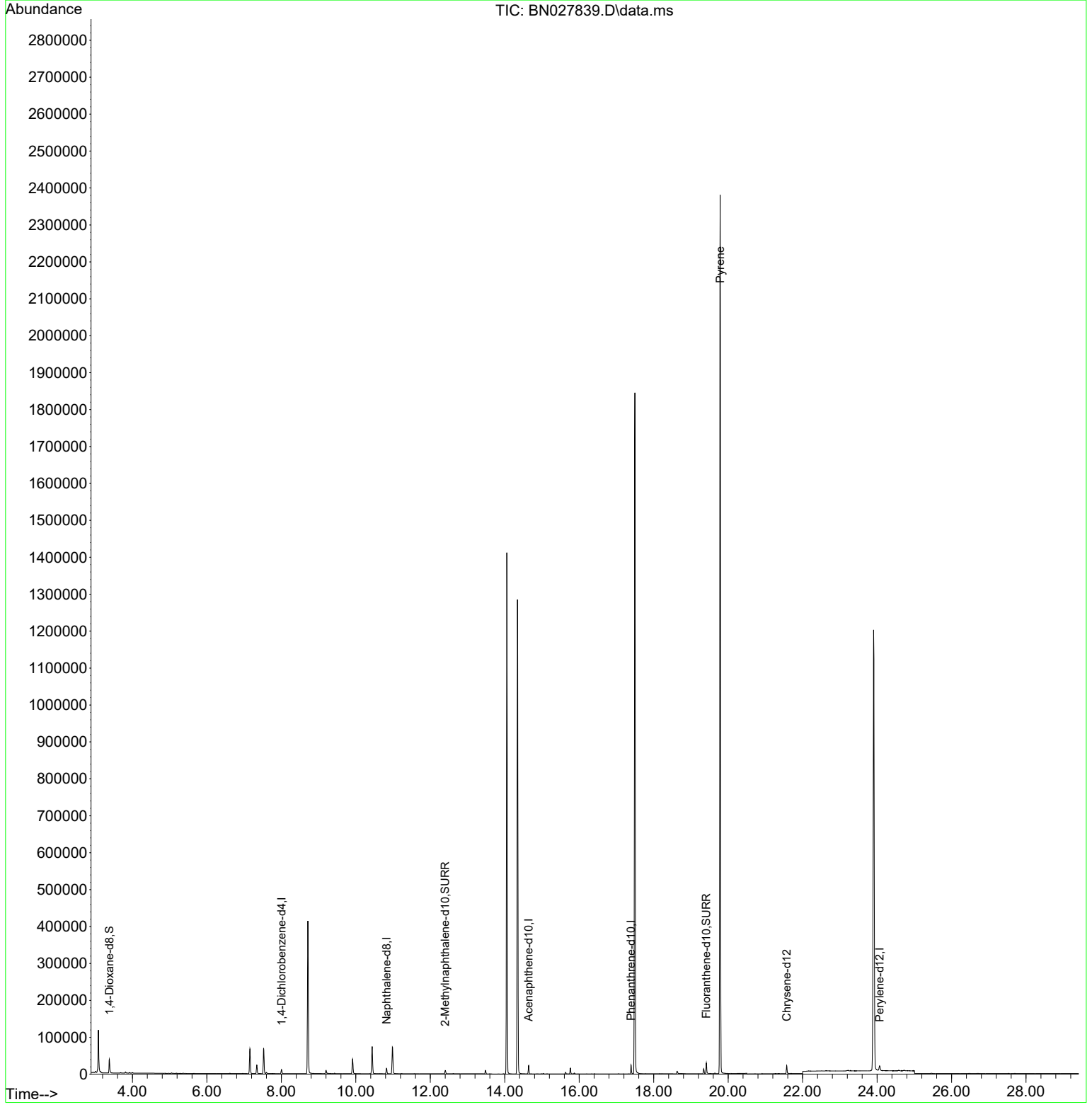
Compound	R.T.	QIon	Response	Conc	Units	Dev(Min)
Internal Standards						
1) 1,4-Dichlorobenzene-d4	8.004	152	5423	0.400	ng/ul	0.00
4) Naphthalene-d8	10.823	136	19275	0.400	ng/ul	0.00
9) Acenaphthene-d10	14.643	164	12284	0.400	ng/ul	0.00
13) Phenanthrene-d10	17.392	188	27709	0.400	ng/ul	0.00
17) Chrysene-d12	21.571	240	21812	0.400	ng/ul	0.00
23) Perylene-d12	24.068	264	19468	0.400	ng/ul	0.00
System Monitoring Compounds						
3) 1,4-Dioxane-d8	3.380	96	24967	3.655	ng/ul	0.00
6) 2-Methylnaphthalene-d10	12.401	152	11555	0.396	ng/ul	0.00
18) Fluoranthene-d10	19.413	212	31836	0.478	ng/ul	0.00
Target Compounds						
20) Pyrene	19.785	202	4472	0.049	ng/ul#	1

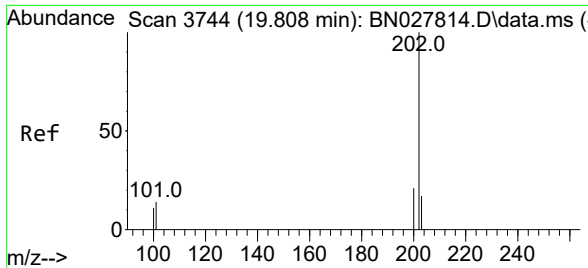
(#) = qualifier out of range (m) = manual integration (+) = signals summed

Data Path : Z:\svoasrv\HPCHEM1\BNA\_N\Data\BN092223\  
 Data File : BN027839.D  
 Acq On : 22 Sep 2023 23:59  
 Operator : MA/JU  
 Sample : 04387-13  
 Misc :  
 ALS Vial : 58 Sample Multiplier: 1

Instrument :  
 BNA\_N  
 ClientSampleId :  
 C0AF4

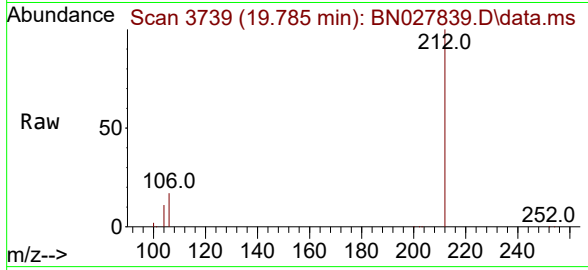
Quant Time: Sep 23 03:50:19 2023  
 Quant Method : Z:\svoasrv\HPCHEM1\BNA\_N\Methods\SFAM-EPA-SIM-BN091523.M  
 Quant Title : ASP BNA STANDARDS FOR 5 POINT CALIBRATION  
 QLast Update : Fri Sep 22 03:58:00 2023  
 Response via : Initial Calibration





#20  
 Pyrene  
 Concen: 0.049 ng/ul  
 RT: 19.785 min Scan# 31  
 Delta R.T. -0.028 min  
 Lab File: BN027839.D  
 Acq: 22 Sep 2023 23:59

Instrument :  
 BNA\_N  
 ClientSampleId :  
 C0AF4



Tgt Ion:202 Resp: 4472

Ion	Ratio	Lower	Upper
202	100		
101	152.7	11.4	17.0#
100	1094.1	9.1	13.7#

