

Data Path : Z:\svoasrv\HPCHEM1\BNA_N\Data\BN100424\
 Data File : BN034394.D
 Acq On : 04 Oct 2024 17:24
 Operator : RC/JU
 Sample : P4228-01
 Misc :
 ALS Vial : 6 Sample Multiplier: 1

Instrument :
 BNA_N
 ClientSampleId :
 E0CP6

Integration Parameters: LSCINT.P

Integrator: RTE
 Smoothing : OFF Filtering: 5
 Sampling : 1 Min Area: 0.1 % of largest Peak
 Start Thrs: 0.2 Max Peaks: 100
 Stop Thrs : 0 Peak Location: TOP

If leading or trailing edge < 100 prefer < Baseline drop else tangent >
 Peak separation: 5

Method : Z:\svoasrv\HPCHEM1\BNA_N\Methods\SFAM-EPA-BN091124.MA.M
 Title : SVOA CALIBRATION

Signal : TIC: BN034394.D\data.ms

peak #	R.T. min	first scan	max scan	last scan	PK TY	peak height	corr. area	corr. % max.	% of total
1	2.999	15	19	28	rVB	46599	63936	1.68%	0.142%
2	3.393	82	86	111	rVB	176901	313710	8.27%	0.695%
3	3.687	133	136	143	rVB	19247	29725	0.78%	0.066%
4	4.052	193	198	202	rVB6	3823	6342	0.17%	0.014%
5	4.140	207	213	216	rVV4	10540	24043	0.63%	0.053%
6	4.187	218	221	229	rVB6	12285	18864	0.50%	0.042%
7	4.446	262	265	271	rVB3	11133	14651	0.39%	0.032%
8	4.564	281	285	289	rBV	10510	14836	0.39%	0.033%
9	4.905	341	343	348	rVB3	3056	4259	0.11%	0.009%
10	5.458	434	437	442	rVB2	6517	9958	0.26%	0.022%
11	5.681	470	475	479	rVB2	21906	30481	0.80%	0.067%
12	5.981	523	526	530	rVB6	2938	4964	0.13%	0.011%
13	6.581	619	628	640	rBV	222750	378942	9.99%	0.839%
14	6.734	647	654	665	rBV	684981	1032677	27.21%	2.286%
15	6.916	679	685	695	rBV	770653	1241282	32.71%	2.748%
16	7.028	699	704	707	rVB6	5338	9095	0.24%	0.020%
17	7.210	732	735	740	rBV5	2733	4053	0.11%	0.009%
18	7.381	757	764	777	rVV	802854	1270290	33.47%	2.812%
19	7.740	819	825	828	rBV4	7051	10200	0.27%	0.023%
20	7.863	843	846	849	rVB5	3975	5145	0.14%	0.011%
21	8.093	878	885	896	rBV	637370	1042815	27.48%	2.309%
22	8.522	950	958	974	rBV	778925	1254142	33.05%	2.777%
23	8.969	1030	1034	1039	rBV6	4400	7794	0.21%	0.017%
24	9.110	1054	1058	1063	rVB4	9384	14944	0.39%	0.033%
25	9.234	1071	1079	1091	rBV	653556	1048698	27.63%	2.322%
26	9.440	1106	1114	1117	rBV8	3839	9395	0.25%	0.021%
27	9.669	1148	1153	1161	rVB4	5068	11278	0.30%	0.025%
28	9.769	1161	1170	1190	rBV	994775	1647501	43.41%	3.648%
29	10.134	1225	1232	1245	rBV	1090814	1740494	45.86%	3.854%
30	10.281	1250	1257	1279	rBV	696249	1262347	33.26%	2.795%
31	10.793	1339	1344	1348	rVB2	8607	15643	0.41%	0.035%
32	10.928	1360	1367	1371	rBV7	2474	4647	0.12%	0.010%
33	11.569	1473	1476	1479	rBV5	2615	4166	0.11%	0.009%
34	11.740	1498	1505	1510	rBV	16054	28122	0.74%	0.062%
35	11.945	1536	1540	1545	rVB5	5435	9295	0.24%	0.021%
36	12.375	1608	1613	1618	rVB5	3150	5061	0.13%	0.011%

Data Path : Z:\svoasrv\HPCHEM1\BNA_N\Data\BN100424\
 Data File : BN034394.D
 Acq On : 04 Oct 2024 17:24
 Operator : RC/JU
 Sample : P4228-01
 Misc :
 ALS Vial : 6 Sample Multiplier: 1

Instrument :
 BNA_N
 ClientSampleId :
 E0CP6

Integration Parameters: LSCINT.P

Integrator: RTE
 Smoothing : OFF Filtering: 5
 Sampling : 1 Min Area: 0.1 % of largest Peak
 Start Thrs: 0.2 Max Peaks: 100
 Stop Thrs : 0 Peak Location: TOP

If leading or trailing edge < 100 prefer < Baseline drop else tangent >
 Peak separation: 5

Method : Z:\svoasrv\HPCHEM1\BNA_N\Methods\SFAM-EPA-BN091124.MA.M
 Title : SVOA CALIBRATION

37	12.640	1653	1658	1663	rBV9	5061	9036	0.24%	0.020%
38	12.945	1705	1710	1714	rBV7	2936	4518	0.12%	0.010%
39	13.069	1725	1731	1734	rBV6	6767	12000	0.32%	0.027%
40	13.463	1791	1798	1812	rBV	1634764	2404745	63.37%	5.324%
41	13.587	1814	1819	1823	rVB6	8145	11919	0.31%	0.026%
42	13.722	1834	1842	1854	rBV	1906754	2839774	74.83%	6.287%
43	13.892	1865	1871	1876	rBV2	29710	62070	1.64%	0.137%
44	14.034	1888	1895	1904	rBV	1520026	2189021	57.68%	4.847%
45	14.269	1929	1935	1951	rBV2	97123	220827	5.82%	0.489%
46	14.498	1969	1974	1981	rVB10	8942	17050	0.45%	0.038%
47	14.716	2007	2011	2015	rBV7	5471	7470	0.20%	0.017%
48	14.869	2034	2037	2044	rVB4	6531	11671	0.31%	0.026%
49	15.039	2059	2066	2079	rBV	2433836	3547464	93.48%	7.854%
50	15.169	2082	2088	2099	rBV	604364	836258	22.04%	1.852%
51	15.281	2103	2107	2110	rVV2	14071	20557	0.54%	0.046%
52	15.416	2124	2130	2140	rBV	481604	637609	16.80%	1.412%
53	15.639	2164	2168	2172	rVB7	3939	6322	0.17%	0.014%
54	15.828	2198	2200	2203	rVB3	5677	4705	0.12%	0.010%
55	15.981	2218	2226	2234	rBV	106432	157236	4.14%	0.348%
56	16.163	2253	2257	2260	rBV5	5030	9084	0.24%	0.020%
57	16.357	2288	2290	2297	rVB7	5435	8625	0.23%	0.019%
58	16.575	2324	2327	2328	rBV2	4747	4072	0.11%	0.009%
59	16.792	2355	2364	2374	rBV	1615412	2284155	60.19%	5.057%
60	16.886	2374	2380	2393	rBV2	2531009	3642730	95.99%	8.065%
61	17.175	2426	2429	2432	rBV5	3395	5372	0.14%	0.012%
62	17.328	2450	2455	2456	rBV5	3682	5877	0.15%	0.013%
63	17.486	2478	2482	2488	rBV7	21543	29671	0.78%	0.066%
64	17.663	2508	2512	2513	rBV3	3337	3937	0.10%	0.009%
65	17.728	2518	2523	2543	rBV2	265661	591146	15.58%	1.309%
66	18.004	2567	2570	2574	rBV4	12465	20471	0.54%	0.045%
67	18.157	2594	2596	2599	rBV3	9748	11463	0.30%	0.025%
68	18.480	2649	2651	2656	rVB6	8396	8510	0.22%	0.019%
69	18.563	2661	2665	2670	rVV2	23656	38425	1.01%	0.085%
70	18.686	2682	2686	2690	rVB2	12126	17671	0.47%	0.039%
71	18.763	2694	2699	2705	rBV3	36171	54446	1.43%	0.121%
72	18.833	2706	2711	2716	rBV	47379	69057	1.82%	0.153%
73	19.027	2739	2744	2760	rBV	428677	844774	22.26%	1.870%
74	19.198	2767	2773	2781	rBV	2848380	3795014	100.00%	8.402%
75	20.763	3036	3039	3044	rVB4	44371	55015	1.45%	0.122%
76	21.027	3078	3084	3094	rBV	1465857	2059143	54.26%	4.559%

Data Path : Z:\svoasrv\HPCHEM1\BNA_N\Data\BN100424\
Data File : BN034394.D
Acq On : 04 Oct 2024 17:24
Operator : RC/JU
Sample : P4228-01
Misc :
ALS Vial : 6 Sample Multiplier: 1

Instrument :
BNA_N
ClientSampleId :
E0CP6

Integration Parameters: LSCINT.P
Integrator: RTE
Smoothing : OFF Filtering: 5
Sampling : 1 Min Area: 0.1 % of largest Peak
Start Thrs: 0.2 Max Peaks: 100
Stop Thrs : 0 Peak Location: TOP

If leading or trailing edge < 100 prefer < Baseline drop else tangent >
Peak separation: 5

Method : Z:\svoasrv\HPCHEM1\BNA_N\Methods\SFAM-EPA-BN091124.MA.M
Title : SVOA CALIBRATION

77	23.551	3505	3513	3526	rVB	1677901	3700586	97.51%	8.193%
78	23.733	3536	3544	3552	rBV	1068360	2312981	60.95%	5.121%

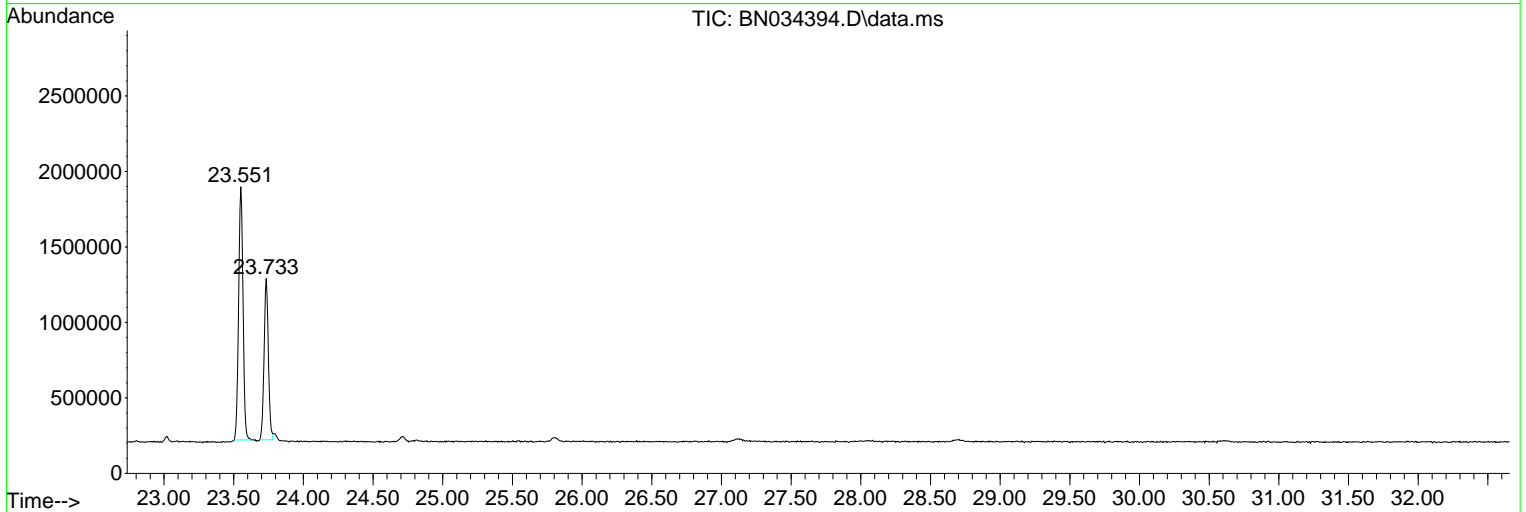
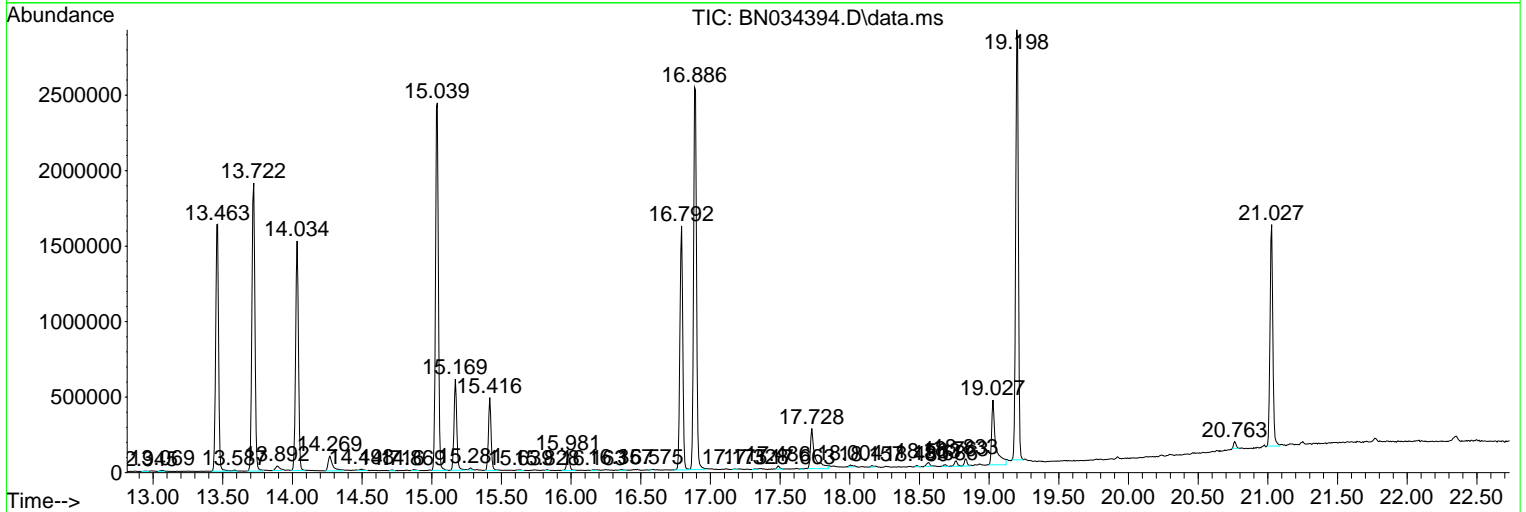
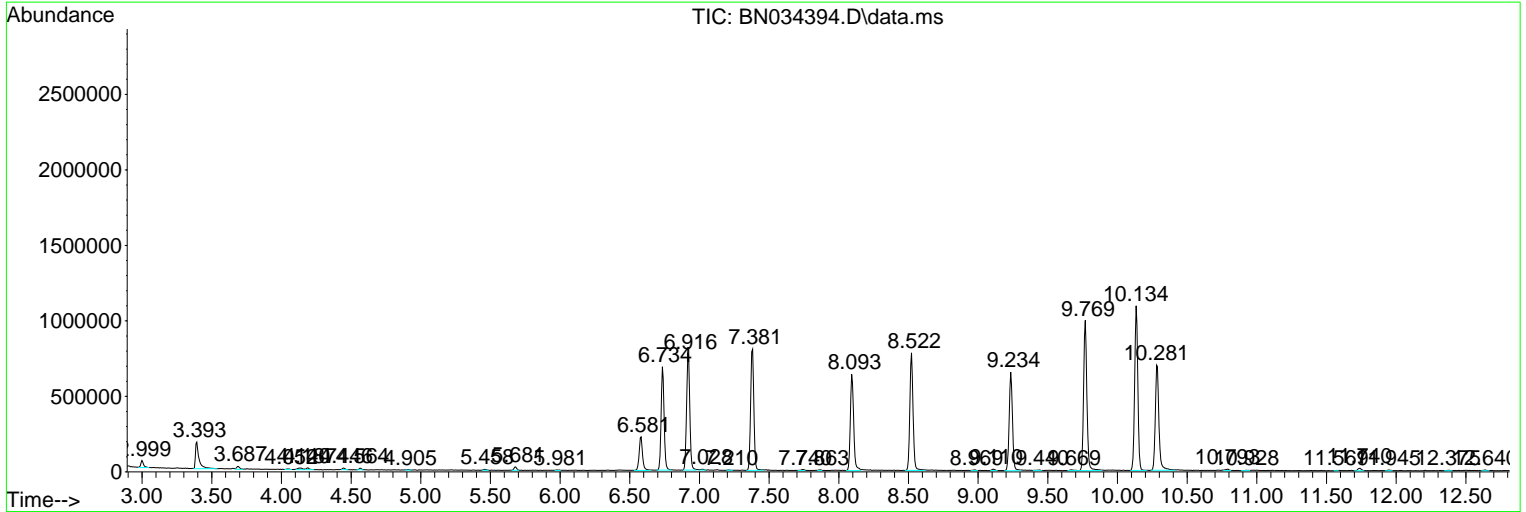
Sum of corrected areas: 45166272

Data Path : Z:\svoasrv\HPCHEM1\BNA_N\Data\BN100424\
 Data File : BN034394.D
 Acq On : 04 Oct 2024 17:24
 Operator : RC/JU
 Sample : P4228-01
 Misc :
 ALS Vial : 6 Sample Multiplier: 1

Instrument :
 BNA_N
ClientSampleId :
 E0CP6

Quant Method : Z:\svoasrv\HPCHEM1\BNA_N\Methods\SFAM-EPA-BN091124.MA.M
 Quant Title : SVOA CALIBRATION

TIC Library : C:\Database\NIST20.L
 TIC Integration Parameters: LSCINT.P



Data Path : Z:\svoasrv\HPCHEM1\BNA_N\Data\BN100424\
 Data File : BN034394.D
 Acq On : 04 Oct 2024 17:24
 Operator : RC/JU
 Sample : P4228-01
 Misc :
 ALS Vial : 6 Sample Multiplier: 1

Instrument :
 BNA_N
 ClientSampleId :
 E0CP6

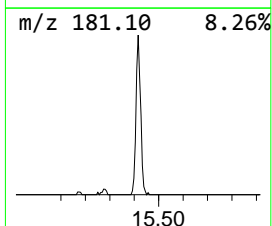
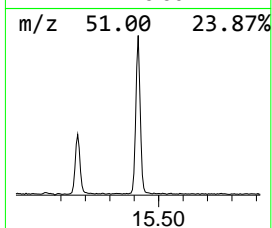
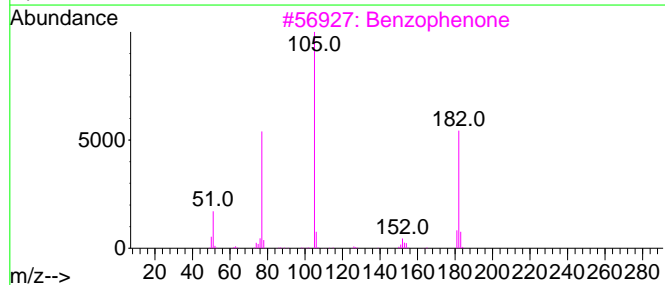
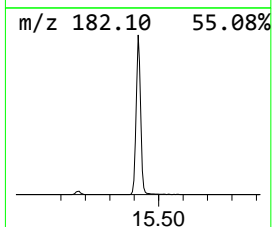
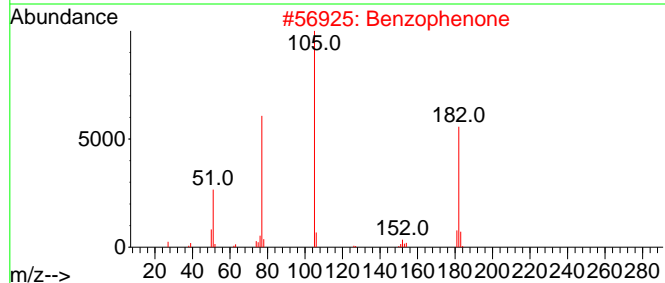
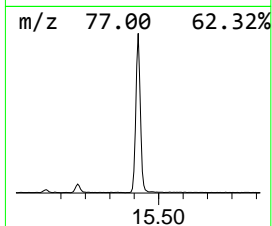
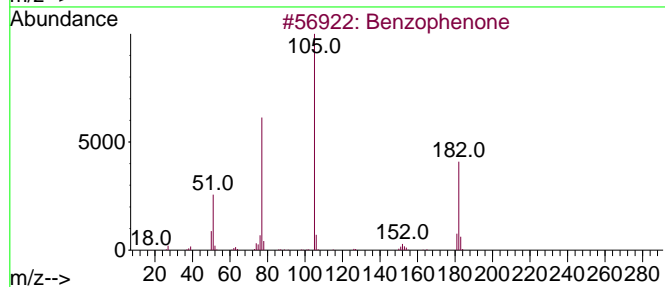
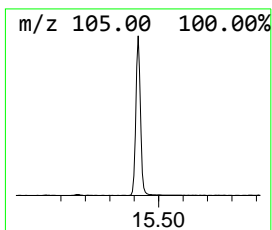
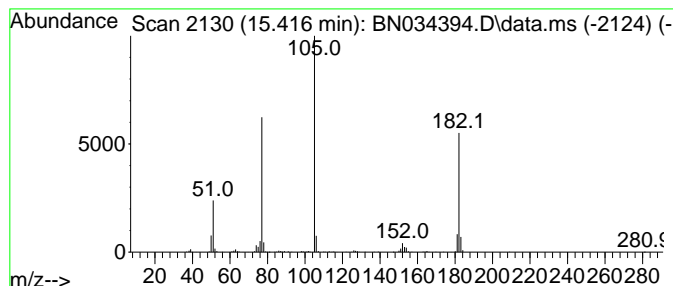
Quant Method : Z:\svoasrv\HPCHEM1\BNA_N\Methods\SFAM-EPA-BN091124.MA.M
 Quant Title : SVOA CALIBRATION

TIC Library : C:\Database\NIST20.L
 TIC Integration Parameters: LSCINT.P

 Peak Number 1 Benzophenone Concentration Rank 2

R.T.	EstConc	Area	Relative to ISTD	R.T.
15.416	5.58 ng/ul	637609	Phenanthrene-d10	16.792

Hit#	of 5	Tentative ID	MW	MolForm	CAS#	Qual
1		Benzophenone	182	C13H10O	000119-61-9	97
2		Benzophenone	182	C13H10O	000119-61-9	96
3		Benzophenone	182	C13H10O	000119-61-9	95
4		Benzophenone	182	C13H10O	000119-61-9	93
5		Benzenecarbothioic acid, S-methy...	152	C8H8OS	005925-68-8	50



Data Path : Z:\svoasrv\HPCHEM1\BNA_N\Data\BN100424\
 Data File : BN034394.D
 Acq On : 04 Oct 2024 17:24
 Operator : RC/JU
 Sample : P4228-01
 Misc :
 ALS Vial : 6 Sample Multiplier: 1

Instrument :
 BNA_N
 ClientSampleId :
 E0CP6

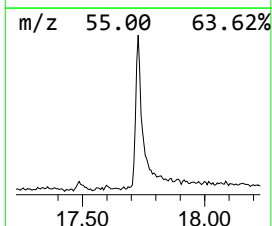
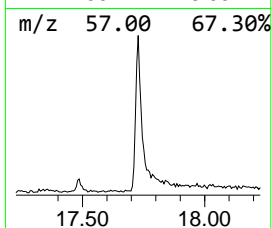
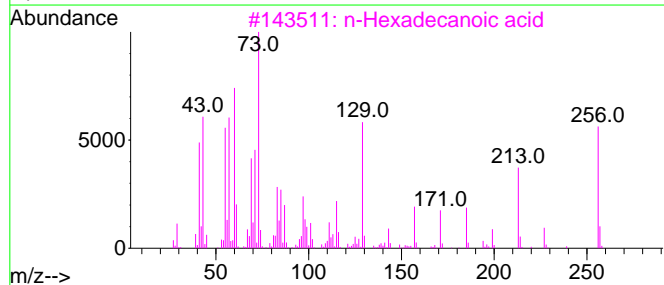
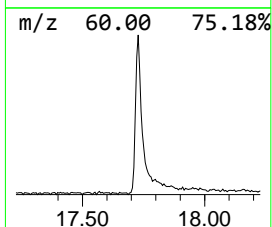
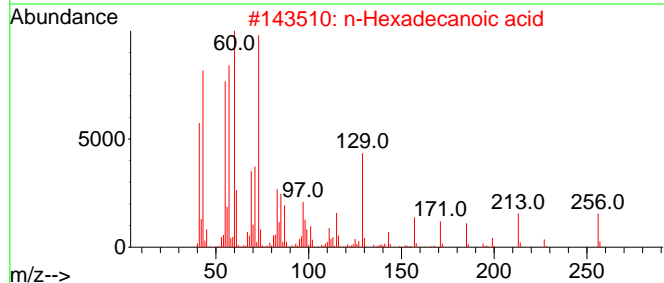
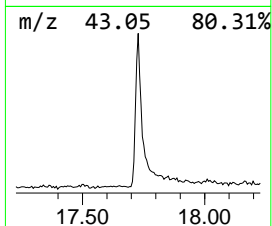
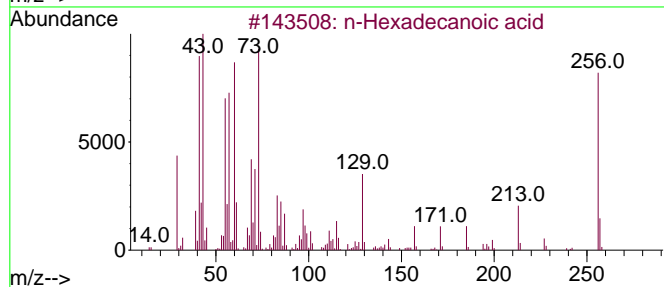
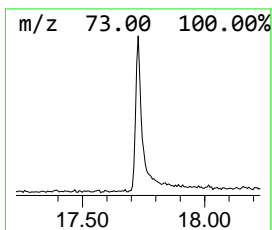
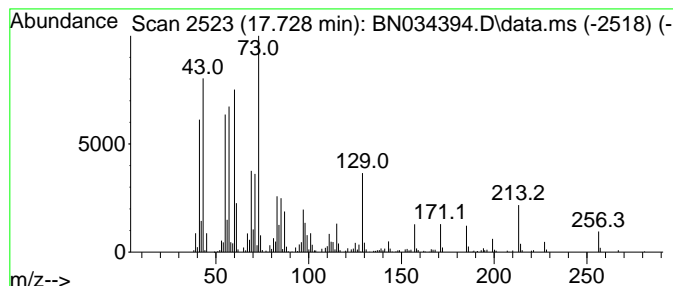
Quant Method : Z:\svoasrv\HPCHEM1\BNA_N\Methods\SFAM-EPA-BN091124.MA.M
 Quant Title : SVOA CALIBRATION

TIC Library : C:\Database\NIST20.L
 TIC Integration Parameters: LSCINT.P

 Peak Number 2 n-Hexadecanoic acid Concentration Rank 3

R.T.	EstConc	Area	Relative to ISTD	R.T.
17.727	5.18 ng/ul	591146	Phenanthrene-d10	16.792

Hit#	of	5	Tentative ID	MW	MolForm	CAS#	Qual
1	n-Hexadecanoic acid	256	C16H32O2	000057-10-3	99		
2	n-Hexadecanoic acid	256	C16H32O2	000057-10-3	99		
3	n-Hexadecanoic acid	256	C16H32O2	000057-10-3	98		
4	n-Hexadecanoic acid	256	C16H32O2	000057-10-3	98		
5	Pentadecanoic acid	242	C15H30O2	001002-84-2	91		



Data Path : Z:\svoasrv\HPCHEM1\BNA_N\Data\BN100424\
 Data File : BN034394.D
 Acq On : 04 Oct 2024 17:24
 Operator : RC/JU
 Sample : P4228-01
 Misc :
 ALS Vial : 6 Sample Multiplier: 1

Instrument :
 BNA_N
 ClientSampleId :
 E0CP6

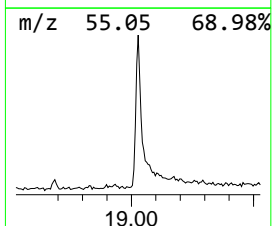
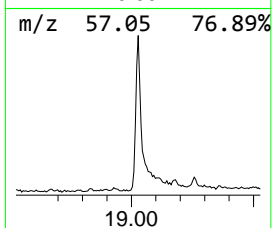
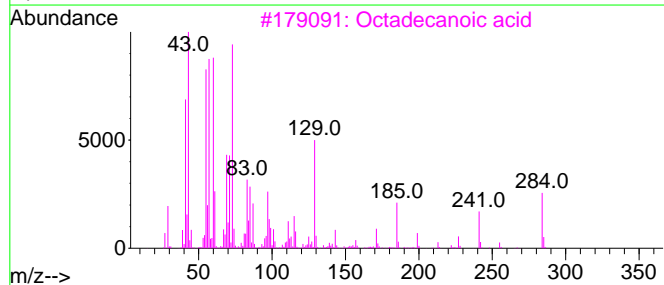
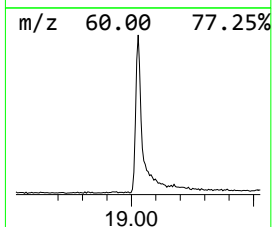
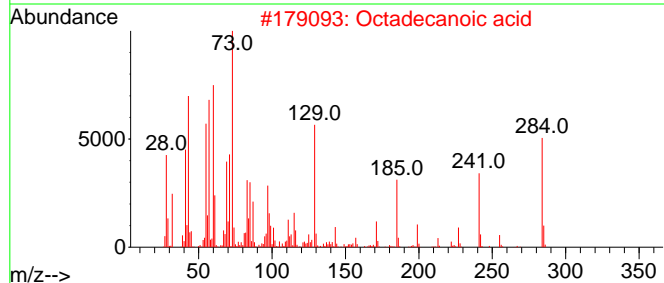
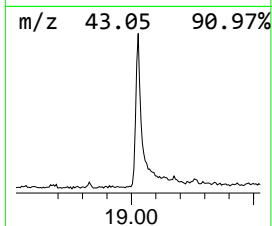
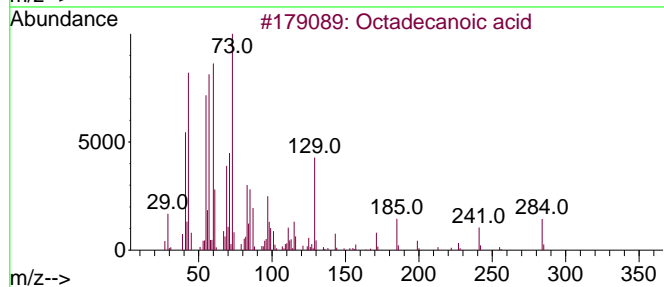
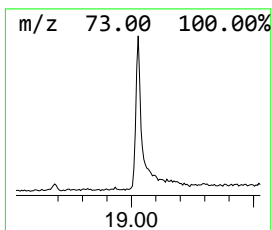
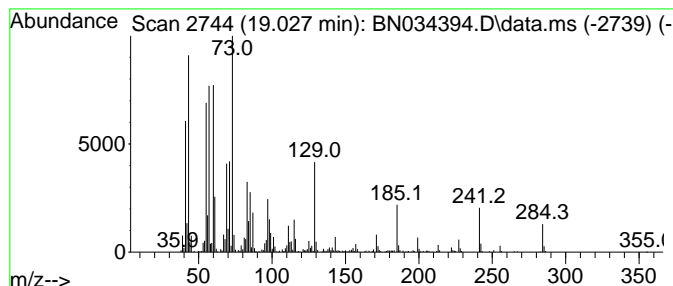
Quant Method : Z:\svoasrv\HPCHEM1\BNA_N\Methods\SFAM-EPA-BN091124.MA.M
 Quant Title : SVOA CALIBRATION

TIC Library : C:\Database\NIST20.L
 TIC Integration Parameters: LSCINT.P

 Peak Number 3 Octadecanoic acid Concentration Rank 1

R.T.	EstConc	Area	Relative to ISTD	R.T.
19.028	8.21 ng/ul	844774	Chrysene-d12	21.027

Hit#	of	5	Tentative ID	MW	MolForm	CAS#	Qual
1			Octadecanoic acid	284	C18H36O2	000057-11-4	99
2			Octadecanoic acid	284	C18H36O2	000057-11-4	99
3			Octadecanoic acid	284	C18H36O2	000057-11-4	99
4			Octadecanoic acid	284	C18H36O2	000057-11-4	98
5			Octadecanoic acid	284	C18H36O2	000057-11-4	94



Data Path : Z:\svoasrv\HPCHEM1\BNA_N\Data\BN100424\
Data File : BN034394.D
Acq On : 04 Oct 2024 17:24
Operator : RC/JU
Sample : P4228-01
Misc :
ALS Vial : 6 Sample Multiplier: 1

Instrument :
BNA_N
ClientSampleId :
E0CP6

Quant Method : Z:\svoasrv\HPCHEM1\BNA_N\Methods\SFAM-EPA-BN091124.MA.M
Quant Title : SVOA CALIBRATION

TIC Library : C:\Database\NIST20.L
TIC Integration Parameters: LSCINT.P

TIC Top Hit name	RT	EstConc	Units	Response	--Internal Standard--			
					#	RT	Resp	Conc
Benzophenone	15.416	5.6	ng/u1	637609	4	16.792	2284160	20.0
n-Hexadecanoic ...	17.727	5.2	ng/u1	591146	4	16.792	2284160	20.0
Octadecanoic acid	19.028	8.2	ng/u1	844774	5	21.027	2059140	20.0