

Data Path : Z:\svoasrv\HPCHEM1\BNA\_N\Data\BN100721\  
 Data File : BN016815.D  
 Acq On : 07 Oct 2021 18:51  
 Operator : CG/JU  
 Sample : SSTDICC1.6  
 Misc :  
 ALS Vial : 6 Sample Multiplier: 1

Instrument :  
 BNA\_N  
 ClientSampled :  
 SSTDICC1.6

Quant Time: Oct 08 01:20:01 2021  
 Quant Method : Z:\SVOASRV\HPCHEM1\BNA\_N\METHODS\8270-SIM-BN100721.M  
 Quant Title : ASP BNA STANDARDS FOR 5 POINT CALIBRATION  
 QLast Update : Thu Oct 07 18:25:32 2021  
 Response via : Initial Calibration

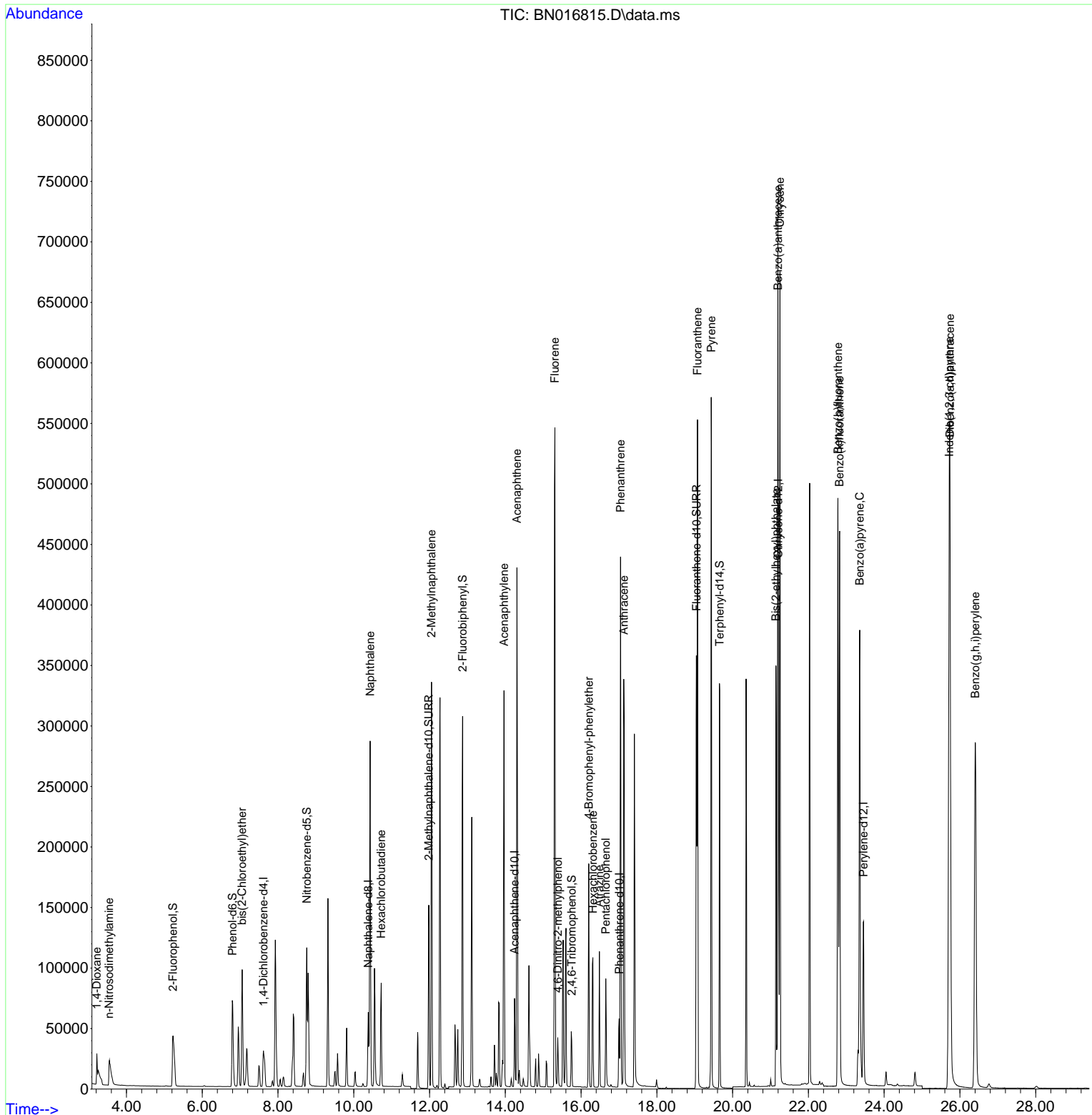
Compound	R.T.	QIon	Response	Conc	Units	Dev(Min)	
Internal Standards							
1) 1,4-Dichlorobenzene-d4	7.615	152	18776	0.40	ng	0.00	
7) Naphthalene-d8	10.381	136	79782	0.40	ng	# 0.00	
13) Acenaphthene-d10	14.243	164	42396	0.40	ng	0.00	
19) Phenanthrene-d10	17.005	188	83475	0.40	ng	0.00	
29) Chrysene-d12	21.206	240	168497	0.40	ng	#-0.01	
35) Perylene-d12	23.454	264	177268	0.40	ng	0.00	
System Monitoring Compounds							
4) 2-Fluorophenol	5.227	112	80028	1.67	ng	0.00	
5) Phenol-d6	6.794	99	93094	1.75	ng	0.00	
8) Nitrobenzene-d5	8.759	82	98133	1.75	ng	0.00	
11) 2-Methylnaphthalene-d10	11.980	152	204999	1.72	ng	0.00	
14) 2,4,6-Tribromophenol	15.753	330	40944	2.18	ng	0.00	
15) 2-Fluorobiphenyl	12.873	172	285960	1.69	ng	0.00	
27) Fluoranthene-d10	19.043	212	397387	1.74	ng	0.00	
31) Terphenyl-d14	19.659	244	337393	0.89	ng	0.00	
							Qvalue
2) 1,4-Dioxane	3.216	88	14722	1.68	ng	# 74	
3) n-Nitrosodimethylamine	3.539	42	26453	1.87	ng	98	
6) bis(2-Chloroethyl)ether	7.052	93	88886	1.74	ng	100	
9) Naphthalene	10.432	128	368994	1.69	ng	100	
10) Hexachlorobutadiene	10.723	225	70293	1.72	ng	# 100	
12) 2-Methylnaphthalene	12.052	142	238273	1.72	ng	100	
16) Acenaphthylene	13.964	152	338394	1.81	ng	100	
17) Acenaphthene	14.307	154	214349	1.73	ng	99	
18) Fluorene	15.309	166	264531	1.77	ng	100	
20) 4,6-Dinitro-2-methylph...	15.385	198	29827	5.17	ng	# 58	
21) 4-Bromophenyl-phenylether	16.202	248	88834	1.75	ng	96	
22) Hexachlorobenzene	16.312	284	98881	1.72	ng	99	
23) Atrazine	16.482	200	77473	1.92	ng	99	
24) Pentachlorophenol	16.652	266	43131	2.71	ng	99	
25) Phenanthrene	17.042	178	418201	1.70	ng	100	
26) Anthracene	17.127	178	391600	1.79	ng	100	
28) Fluoranthene	19.073	202	483072	1.77	ng	100	
30) Pyrene	19.435	202	498424	0.90	ng	100	
32) Benzo(a)anthracene	21.196	228	550394	1.05	ng	98	
33) Chrysene	21.249	228	544871	1.03	ng	98	
34) Bis(2-ethylhexyl)phtha...	21.142	149	337096	1.06	ng	99	
36) Indeno(1,2,3-cd)pyrene	25.716	276	711515	1.26	ng	99	
37) Benzo(b)fluoranthene	22.779	252	591971	1.03	ng	99	
38) Benzo(k)fluoranthene	22.824	252	573612	1.04	ng	100	
39) Benzo(a)pyrene	23.354	252	541694	1.06	ng	99	
40) Dibenzo(a,h)anthracene	25.737	278	581436	1.30	ng	99	
41) Benzo(g,h,i)perylene	26.404	276	612312	1.23	ng	99	

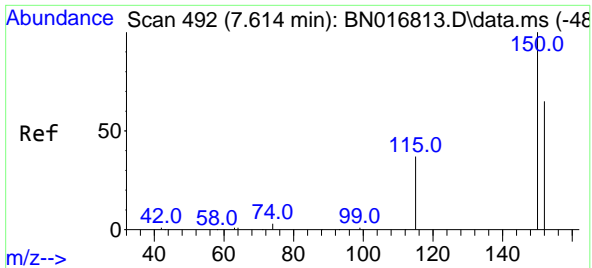
(#) = qualifier out of range (m) = manual integration (+) = signals summed

Data Path : Z:\svoasrv\HPCHEM1\BNA\_N\Data\BN100721\  
 Data File : BN016815.D  
 Acq On : 07 Oct 2021 18:51  
 Operator : CG/JU  
 Sample : SSTDICC1.6  
 Misc :  
 ALS Vial : 6 Sample Multiplier: 1

Instrument :  
 BNA\_N  
 ClientSampleId :  
 SSTDICC1.6

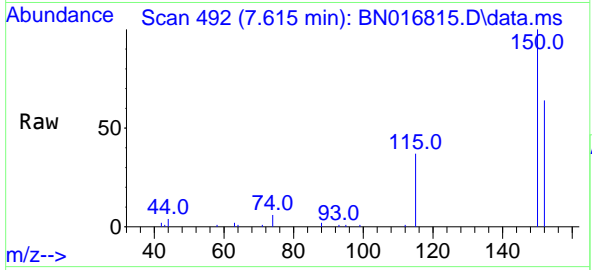
Quant Time: Oct 08 01:20:01 2021  
 Quant Method : Z:\SVOASRV\HPCHEM1\BNA\_N\METHODS\8270-SIM-BN100721.M  
 Quant Title : ASP BNA STANDARDS FOR 5 POINT CALIBRATION  
 QLast Update : Thu Oct 07 18:25:32 2021  
 Response via : Initial Calibration



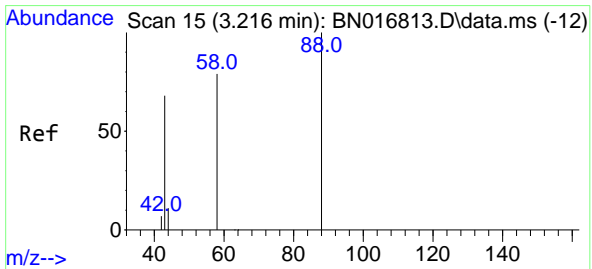
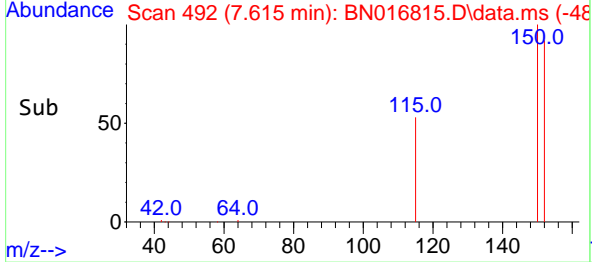
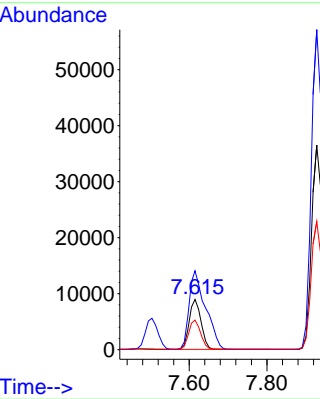


#1  
 1,4-Dichlorobenzene-d4  
 Concen: 0.40 ng  
 RT: 7.615 min Scan# 492  
 Delta R.T. 0.001 min  
 Lab File: BN016815.D  
 Acq: 07 Oct 2021 18:51

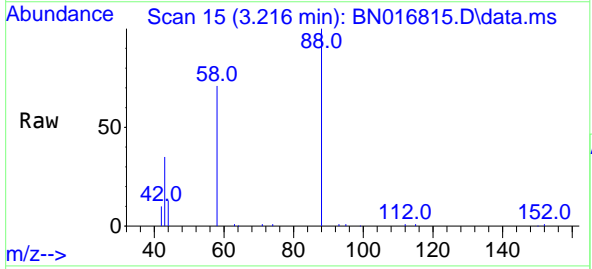
**Instrument :**  
 BNA\_N  
**ClientSampled :**  
 SSTDICC1.6



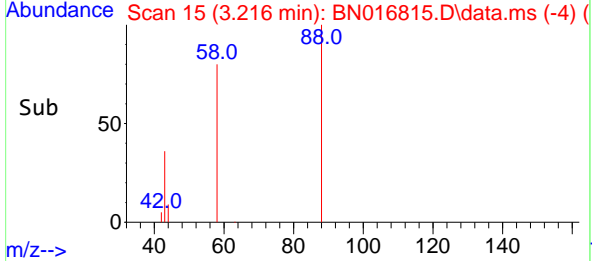
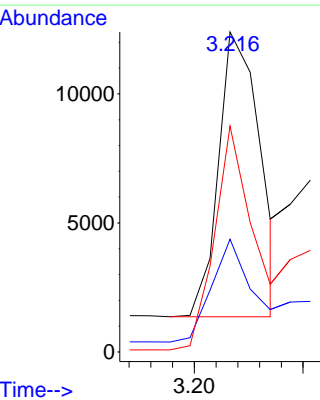
Tgt Ion:152 Resp: 18776  
 Ion Ratio Lower Upper  
 152 100  
 150 156.9 123.3 184.9  
 115 58.7 47.0 70.6

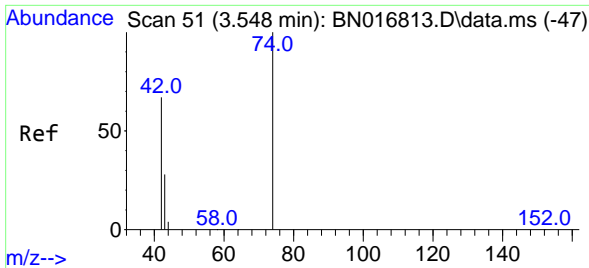


#2  
 1,4-Dioxane  
 Concen: 1.68 ng  
 RT: 3.216 min Scan# 15  
 Delta R.T. 0.000 min  
 Lab File: BN016815.D  
 Acq: 07 Oct 2021 18:51



Tgt Ion: 88 Resp: 14722  
 Ion Ratio Lower Upper  
 88 100  
 43 35.5 61.7 92.5#  
 58 73.6 62.2 93.2

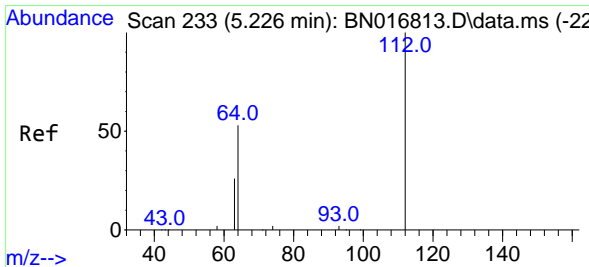
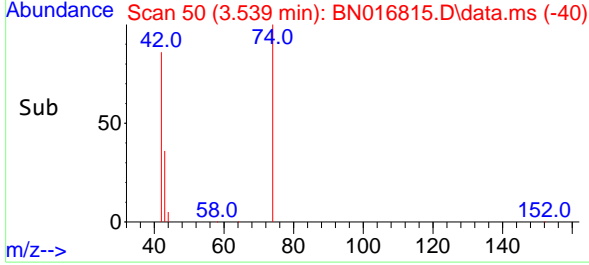
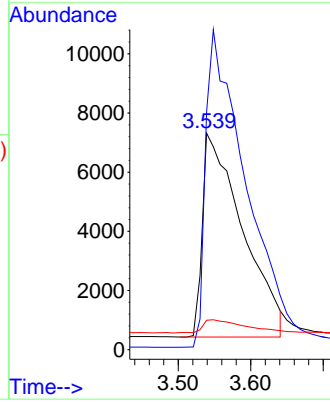
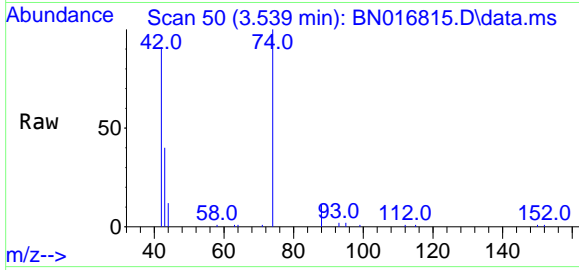




#3  
 n-Nitrosodimethylamine  
 Concen: 1.87 ng  
 RT: 3.539 min Scan# 50  
 Delta R.T. -0.009 min  
 Lab File: BN016815.D  
 Acq: 07 Oct 2021 18:51

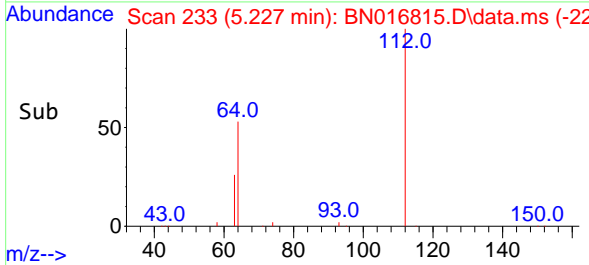
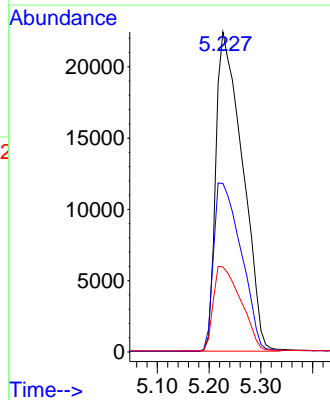
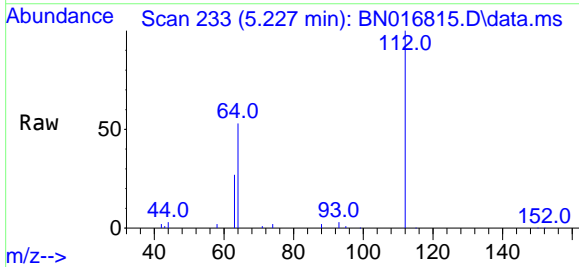
Instrument :  
 BNA\_N  
 ClientSampled :  
 SSTDICC1.6

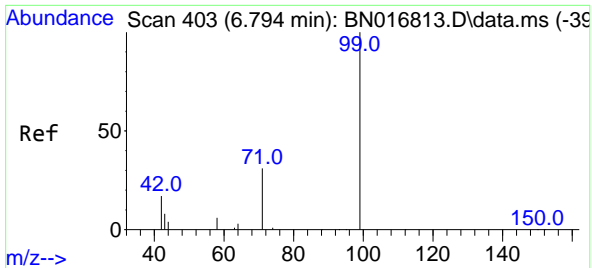
Tgt Ion: 42 Resp: 26453  
 Ion Ratio Lower Upper  
 42 100  
 74 153.0 124.0 186.0  
 44 6.8 5.6 8.4



#4  
 2-Fluorophenol  
 Concen: 1.67 ng  
 RT: 5.227 min Scan# 233  
 Delta R.T. 0.000 min  
 Lab File: BN016815.D  
 Acq: 07 Oct 2021 18:51

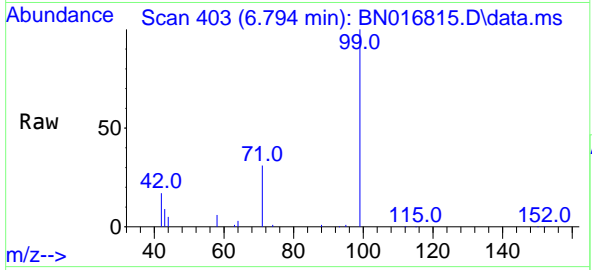
Tgt Ion: 112 Resp: 80028  
 Ion Ratio Lower Upper  
 112 100  
 64 54.5 42.9 64.3  
 63 27.3 21.5 32.3





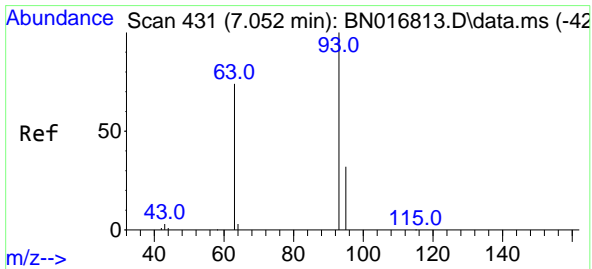
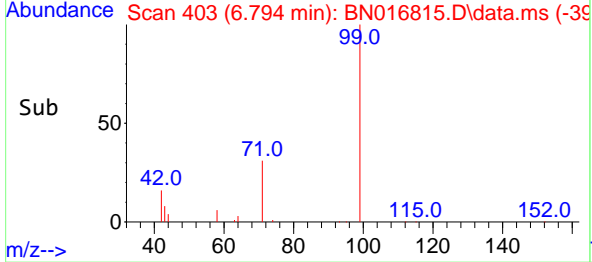
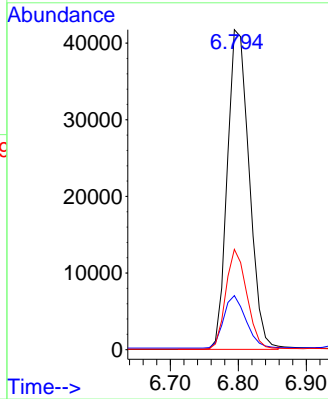
#5  
Phenol-d6  
Concen: 1.75 ng  
RT: 6.794 min Scan# 403  
Delta R.T. 0.000 min  
Lab File: BN016815.D  
Acq: 07 Oct 2021 18:51

Instrument :  
BNA\_N  
ClientSampled :  
SSTDICC1.6



Tgt Ion: 99 Resp: 93094

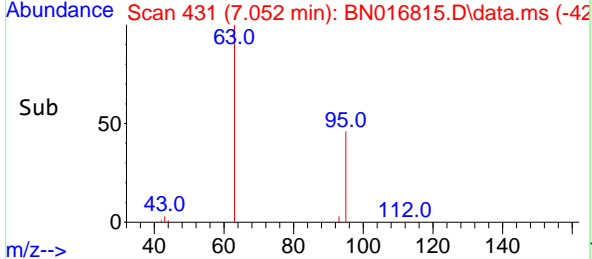
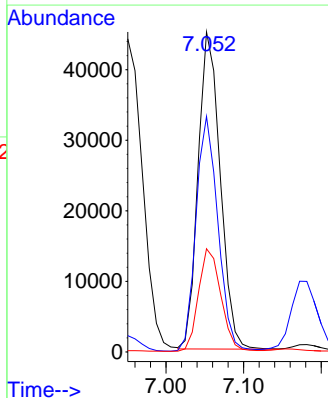
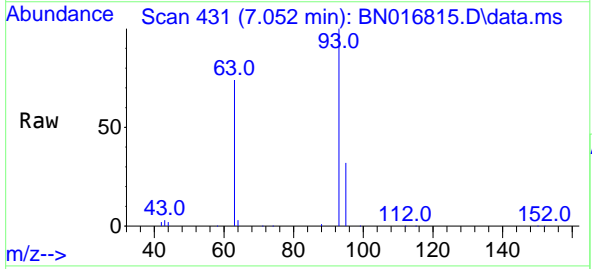
Ion	Ratio	Lower	Upper
99	100		
42	16.7	13.4	20.2
71	30.0	24.0	36.0

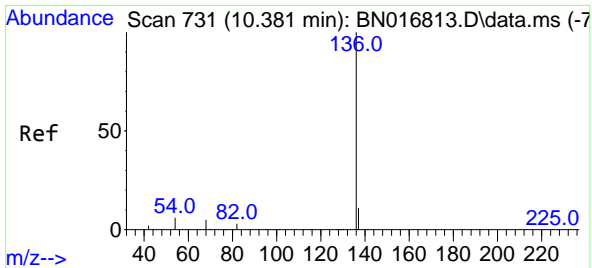


#6  
bis(2-Chloroethyl)ether  
Concen: 1.74 ng  
RT: 7.052 min Scan# 431  
Delta R.T. 0.000 min  
Lab File: BN016815.D  
Acq: 07 Oct 2021 18:51

Tgt Ion: 93 Resp: 88886

Ion	Ratio	Lower	Upper
93	100		
63	73.5	59.0	88.6
95	32.8	26.4	39.6



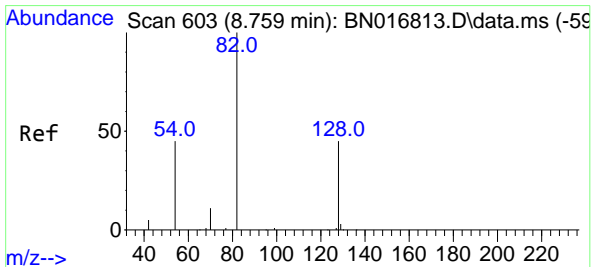
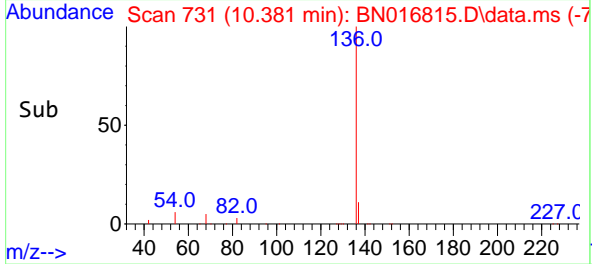
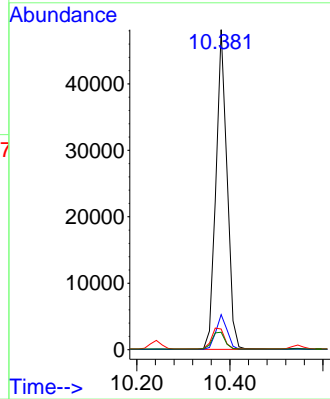
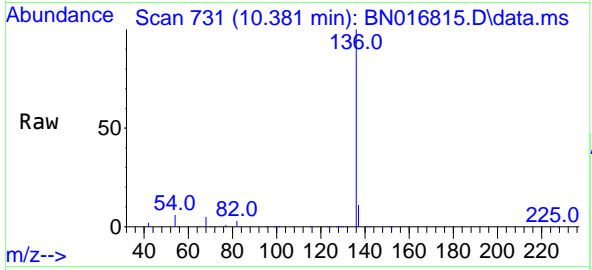


#7  
 Naphthalene-d8  
 Concen: 0.40 ng  
 RT: 10.381 min Scan# 731  
 Delta R.T. 0.000 min  
 Lab File: BN016815.D  
 Acq: 07 Oct 2021 18:51

Instrument :  
 BNA\_N  
 ClientSampleId :  
 SSTDICC1.6

Tgt Ion:136 Resp: 79782

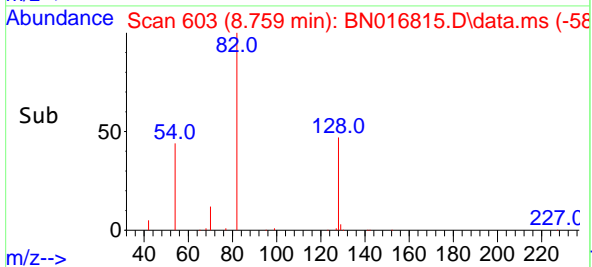
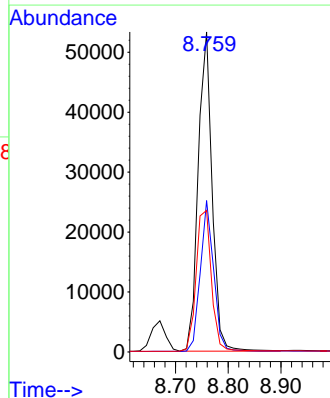
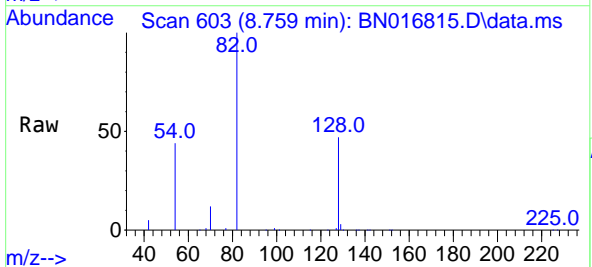
Ion	Ratio	Lower	Upper
136	100		
137	11.0	8.9	13.3
54	6.4	6.5	9.7#
68	5.4	5.3	7.9

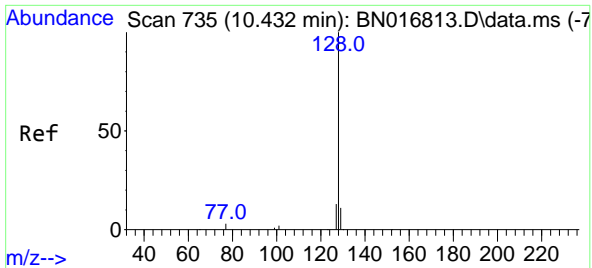


#8  
 Nitrobenzene-d5  
 Concen: 1.75 ng  
 RT: 8.759 min Scan# 603  
 Delta R.T. 0.000 min  
 Lab File: BN016815.D  
 Acq: 07 Oct 2021 18:51

Tgt Ion: 82 Resp: 98133

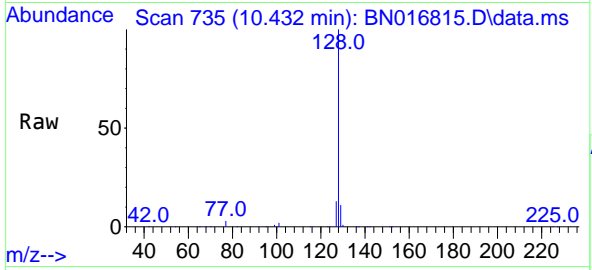
Ion	Ratio	Lower	Upper
82	100		
128	47.3	33.8	50.6
54	44.2	38.5	57.7



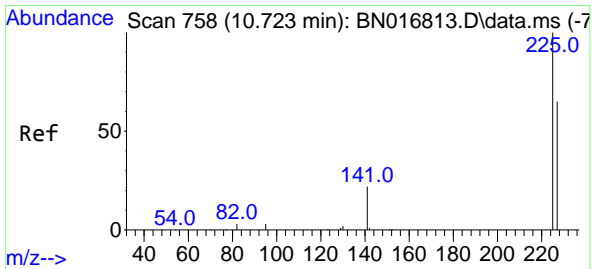
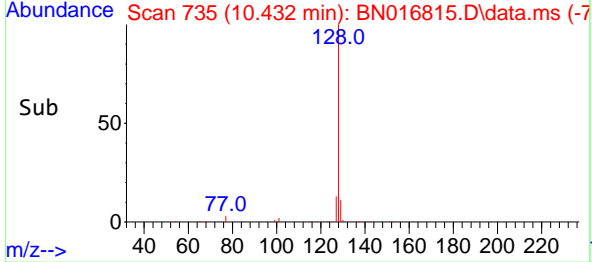
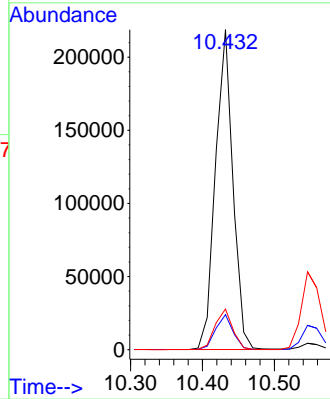


#9  
 Naphthalene  
 Concen: 1.69 ng  
 RT: 10.432 min Scan# 735  
 Delta R.T. 0.000 min  
 Lab File: BN016815.D  
 Acq: 07 Oct 2021 18:51

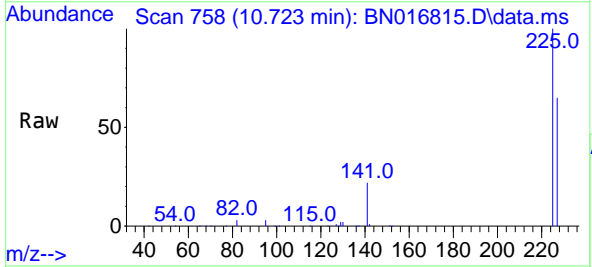
Instrument :  
 BNA\_N  
 ClientSampled :  
 SSTDICC1.6



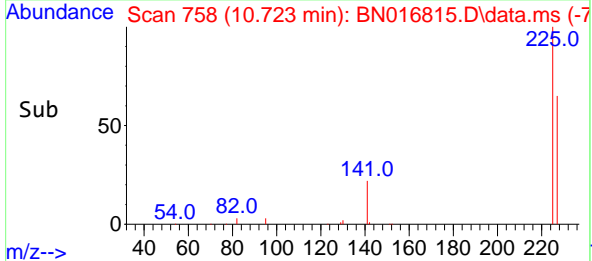
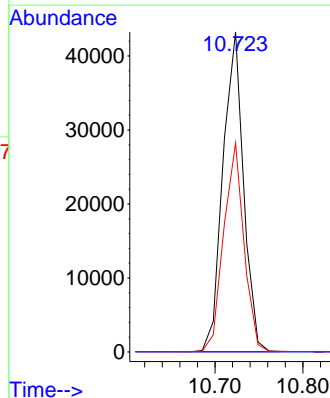
Tgt Ion:128 Resp: 368994  
 Ion Ratio Lower Upper  
 128 100  
 129 10.9 8.7 13.1  
 127 12.7 10.3 15.5

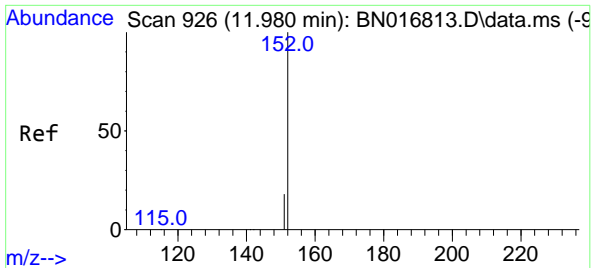


#10  
 Hexachlorobutadiene  
 Concen: 1.72 ng  
 RT: 10.723 min Scan# 758  
 Delta R.T. 0.000 min  
 Lab File: BN016815.D  
 Acq: 07 Oct 2021 18:51



Tgt Ion:225 Resp: 70293  
 Ion Ratio Lower Upper  
 225 100  
 223 0.0 0.0 0.0  
 227 64.2 51.1 76.7

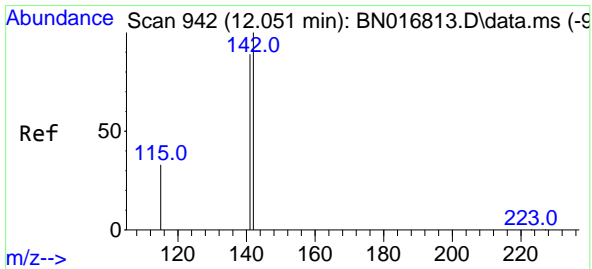
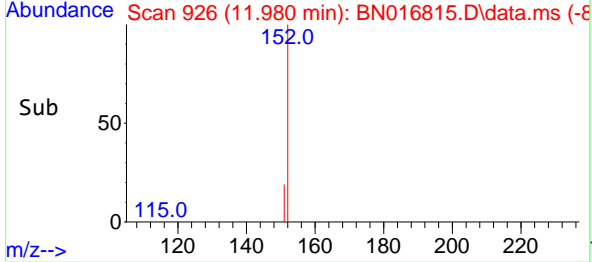
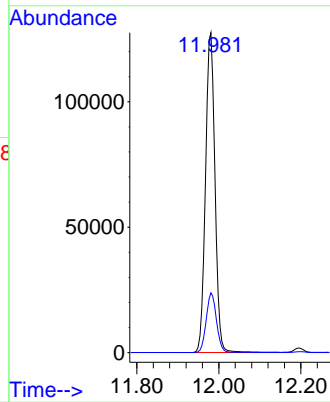
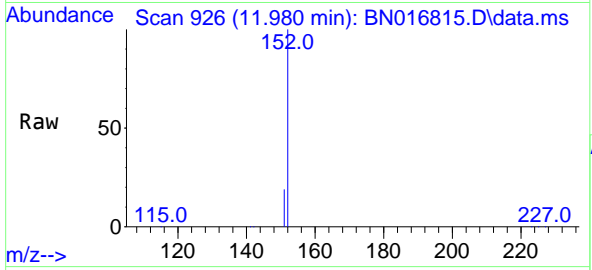




#11  
 2-Methylnaphthalene-d10  
 Concen: 1.72 ng  
 RT: 11.980 min Scan# 926  
 Delta R.T. 0.000 min  
 Lab File: BN016815.D  
 Acq: 07 Oct 2021 18:51

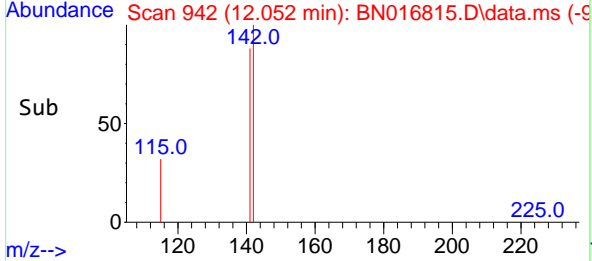
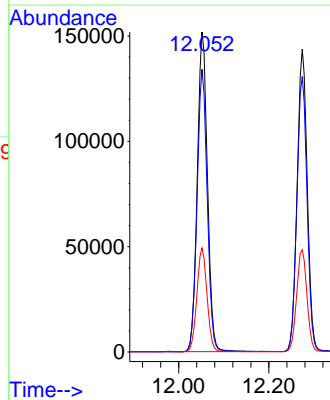
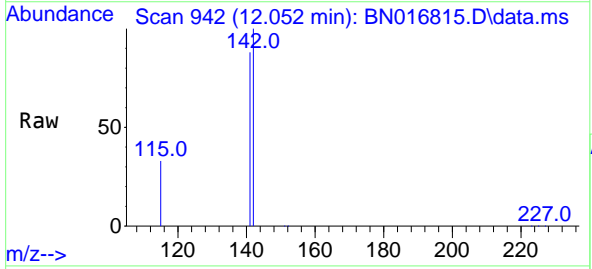
**Instrument :**  
 BNA\_N  
**ClientSampled :**  
 SSTDICC1.6

Tgt Ion:152 Resp: 204999  
 Ion Ratio Lower Upper  
 152 100  
 151 20.3 16.2 24.4

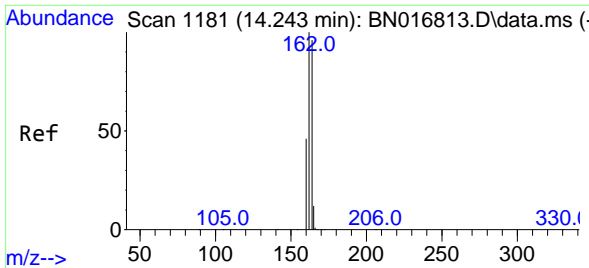


#12  
 2-Methylnaphthalene  
 Concen: 1.72 ng  
 RT: 12.052 min Scan# 942  
 Delta R.T. 0.000 min  
 Lab File: BN016815.D  
 Acq: 07 Oct 2021 18:51

Tgt Ion:142 Resp: 238273  
 Ion Ratio Lower Upper  
 142 100  
 141 88.3 70.6 106.0  
 115 32.5 26.1 39.1

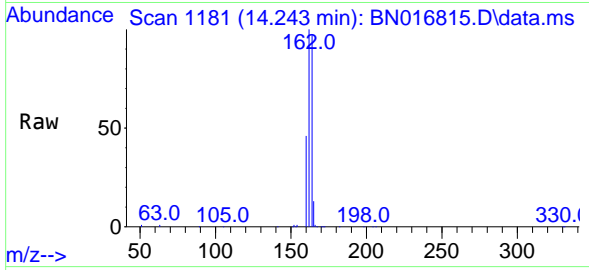




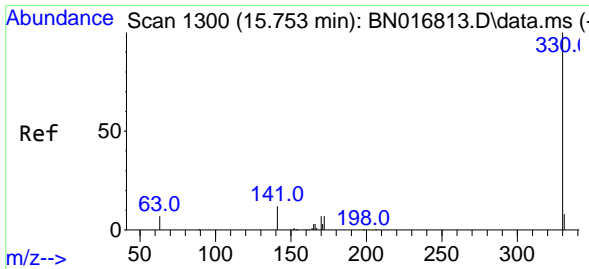
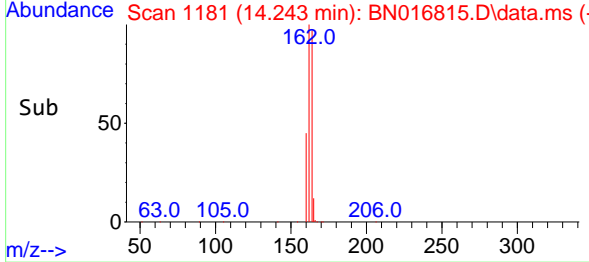
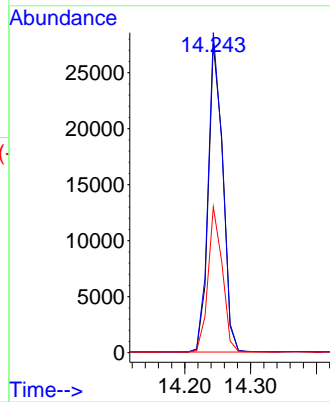


#13  
 Acenaphthene-d10  
 Concen: 0.40 ng  
 RT: 14.243 min Scan# 1181  
 Delta R.T. 0.000 min  
 Lab File: BN016815.D  
 Acq: 07 Oct 2021 18:51

Instrument :  
 BNA\_N  
 ClientSampled :  
 SSTDICC1.6

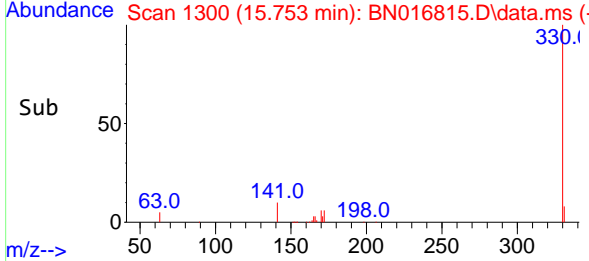
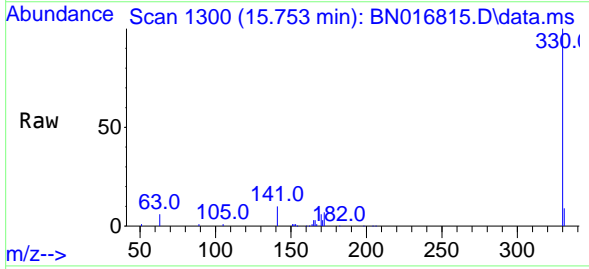
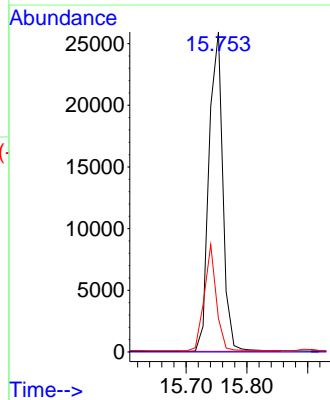


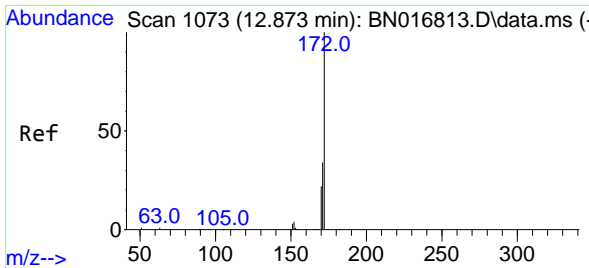
Tgt Ion:164 Resp: 42396  
 Ion Ratio Lower Upper  
 164 100  
 162 103.5 82.6 124.0  
 160 47.2 38.2 57.2



#14  
 2,4,6-Tribromophenol  
 Concen: 2.18 ng  
 RT: 15.753 min Scan# 1300  
 Delta R.T. 0.000 min  
 Lab File: BN016815.D  
 Acq: 07 Oct 2021 18:51

Tgt Ion:330 Resp: 40944  
 Ion Ratio Lower Upper  
 330 100  
 332 0.0 0.0 0.0  
 141 29.1 24.2 36.2



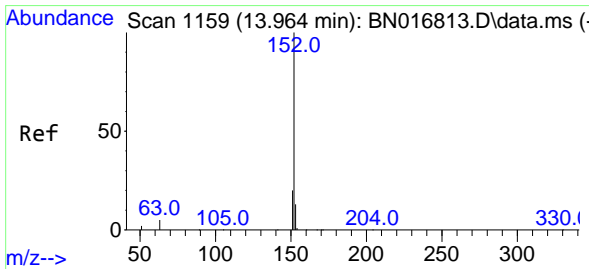
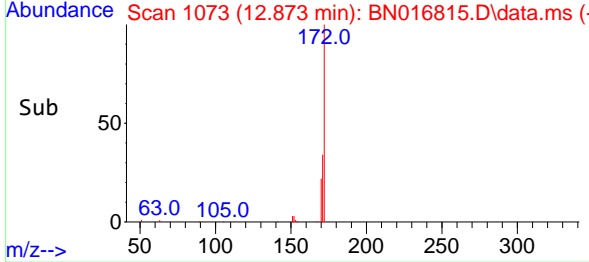
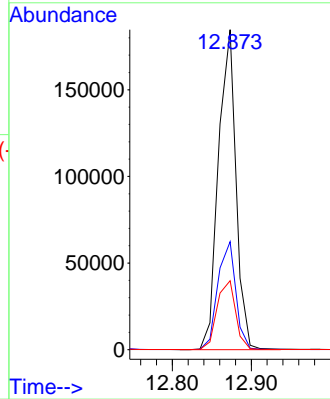
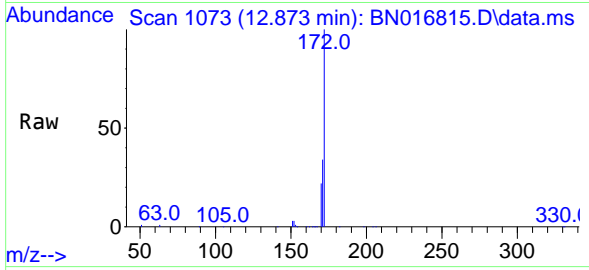


#15  
 2-Fluorobiphenyl  
 Concen: 1.69 ng  
 RT: 12.873 min Scan# 1073  
 Delta R.T. 0.000 min  
 Lab File: BN016815.D  
 Acq: 07 Oct 2021 18:51

Instrument :  
 BNA\_N  
 ClientSampleId :  
 SSTDICC1.6

Tgt Ion:172 Resp: 285960

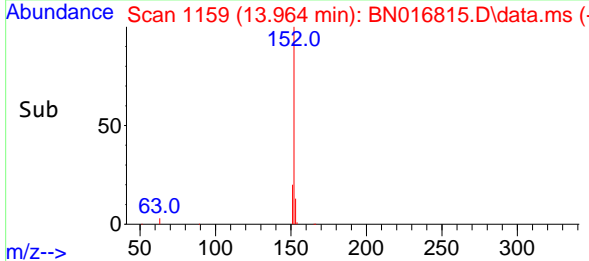
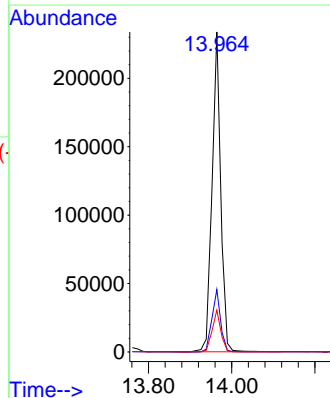
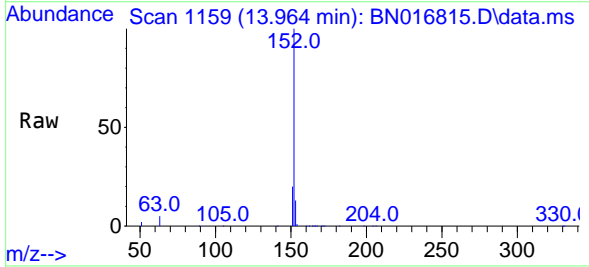
Ion	Ratio	Lower	Upper
172	100		
171	33.8	26.9	40.3
170	21.6	17.4	26.0

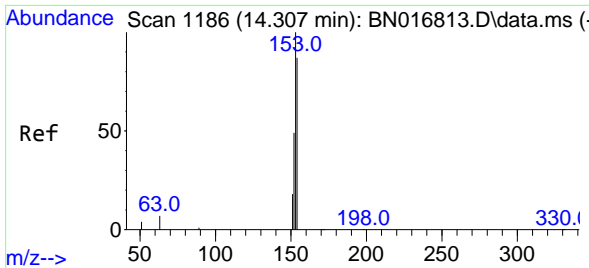


#16  
 Acenaphthylene  
 Concen: 1.81 ng  
 RT: 13.964 min Scan# 1159  
 Delta R.T. 0.000 min  
 Lab File: BN016815.D  
 Acq: 07 Oct 2021 18:51

Tgt Ion:152 Resp: 338394

Ion	Ratio	Lower	Upper
152	100		
151	19.4	15.5	23.3
153	13.0	10.4	15.6



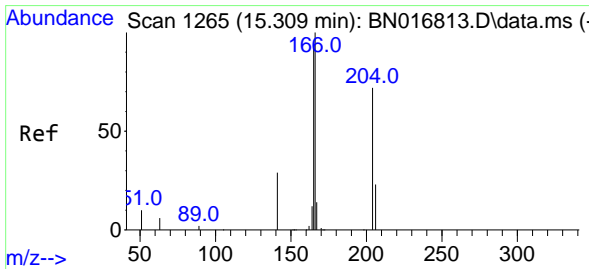
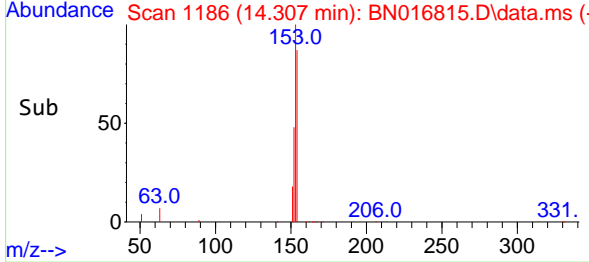
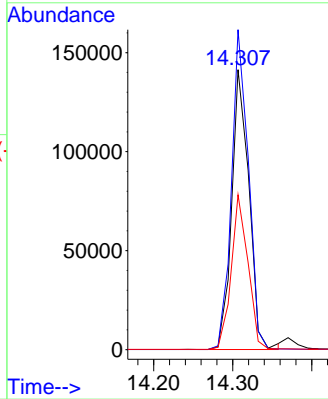
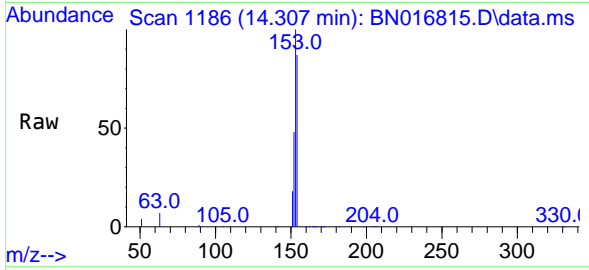


#17  
 Acenaphthene  
 Concen: 1.73 ng  
 RT: 14.307 min Scan# 1186  
 Delta R.T. 0.000 min  
 Lab File: BN016815.D  
 Acq: 07 Oct 2021 18:51

**Instrument :**  
 BNA\_N  
**ClientSampleId :**  
 SSTDICC1.6

Tgt Ion:154 Resp: 214349

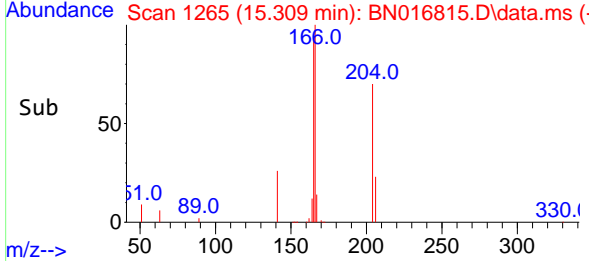
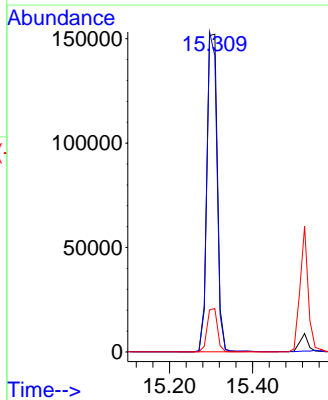
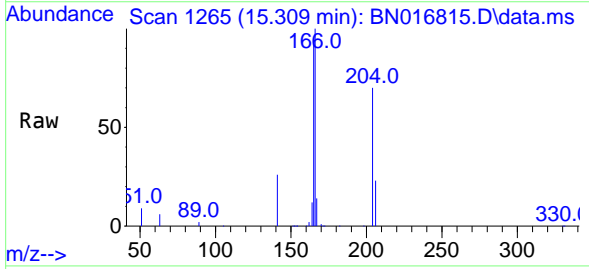
Ion	Ratio	Lower	Upper
154	100		
153	112.0	90.1	135.1
152	53.7	43.6	65.4

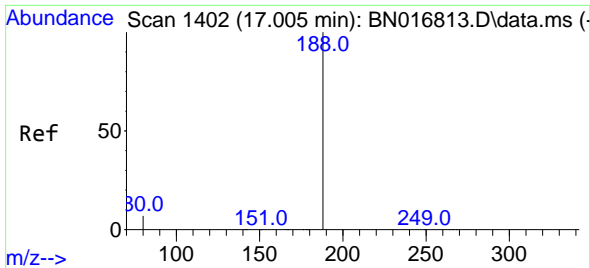


#18  
 Fluorene  
 Concen: 1.77 ng  
 RT: 15.309 min Scan# 1265  
 Delta R.T. 0.000 min  
 Lab File: BN016815.D  
 Acq: 07 Oct 2021 18:51

Tgt Ion:166 Resp: 264531

Ion	Ratio	Lower	Upper
166	100		
165	97.5	78.1	117.1
167	13.4	10.7	16.1



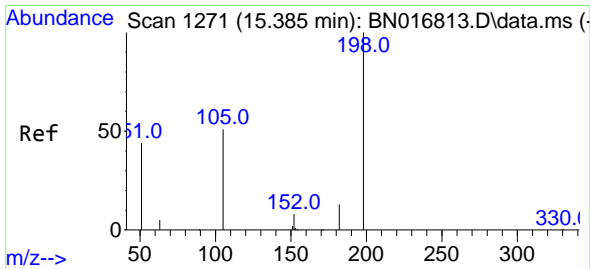
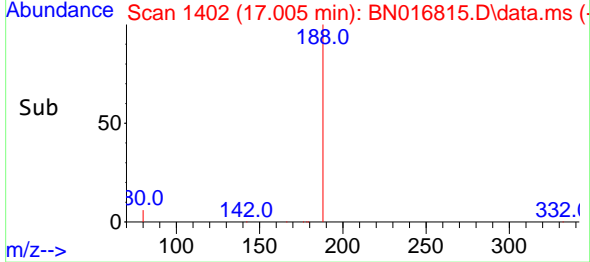
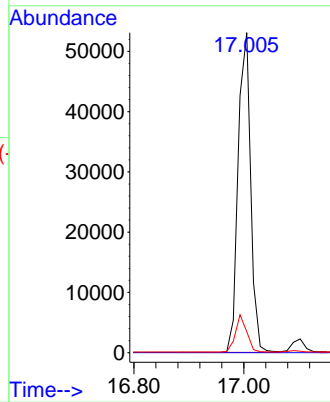
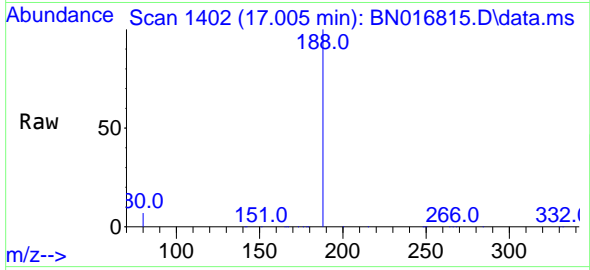


#19  
 Phenanthrene-d10  
 Concen: 0.40 ng  
 RT: 17.005 min Scan# 1402  
 Delta R.T. 0.000 min  
 Lab File: BN016815.D  
 Acq: 07 Oct 2021 18:51

Instrument :  
 BNA\_N  
 ClientSampleId :  
 SSTDICC1.6

Tgt Ion:188 Resp: 83475

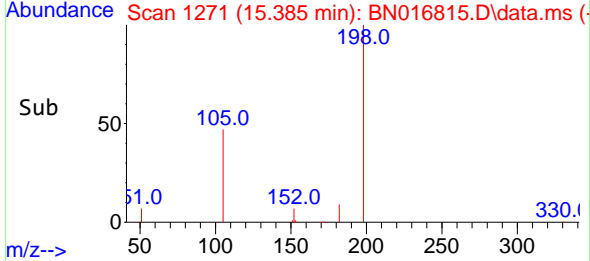
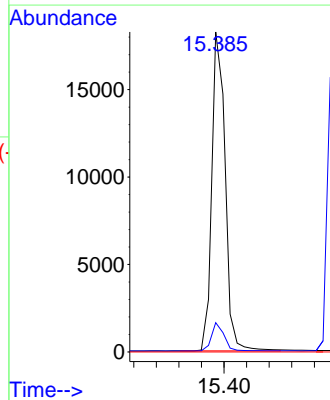
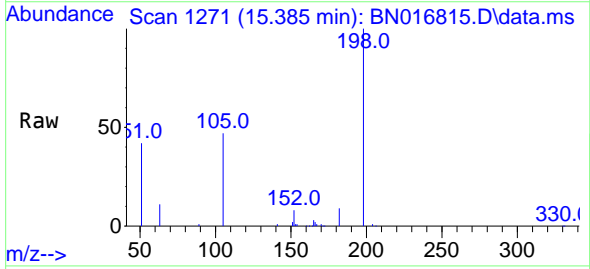
Ion	Ratio	Lower	Upper
188	100		
94	0.0	0.0	0.0
80	6.5	5.8	8.8

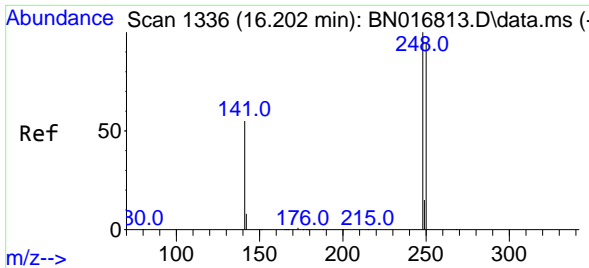


#20  
 4,6-Dinitro-2-methylphenol  
 Concen: 5.17 ng  
 RT: 15.385 min Scan# 1271  
 Delta R.T. 0.000 min  
 Lab File: BN016815.D  
 Acq: 07 Oct 2021 18:51

Tgt Ion:198 Resp: 29827

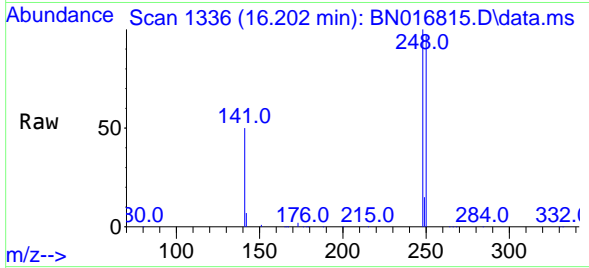
Ion	Ratio	Lower	Upper
198	100		
182	9.1	26.2	39.2#
77	0.0	0.0	0.0





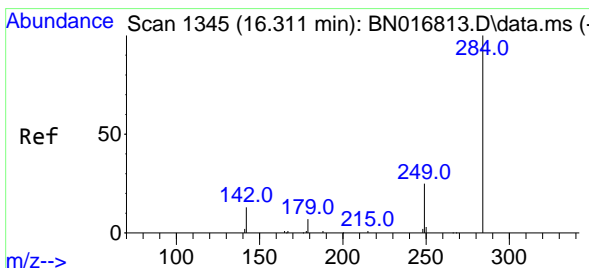
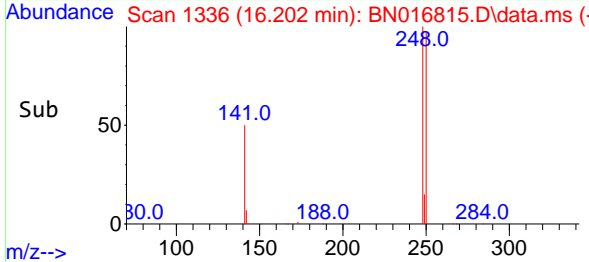
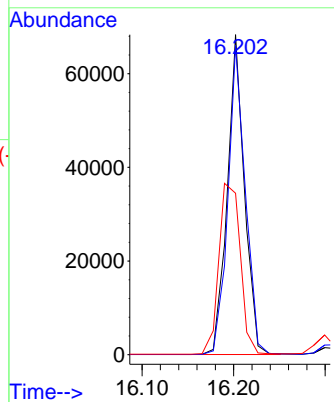
#21  
 4-Bromophenyl-phenylether  
 Concen: 1.75 ng  
 RT: 16.202 min Scan# 1336  
 Delta R.T. 0.000 min  
 Lab File: BN016815.D  
 Acq: 07 Oct 2021 18:51

Instrument :  
 BNA\_N  
 ClientSampled :  
 SSTDICC1.6

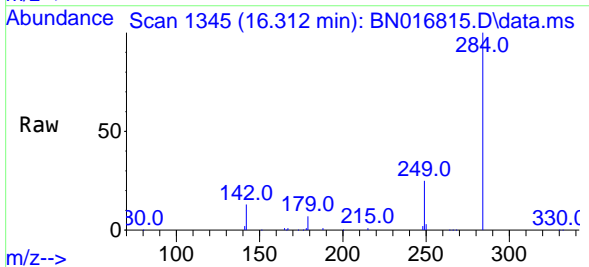


Tgt Ion:248 Resp: 88834

Ion	Ratio	Lower	Upper
248	100		
250	96.7	76.2	114.4
141	50.4	45.6	68.4

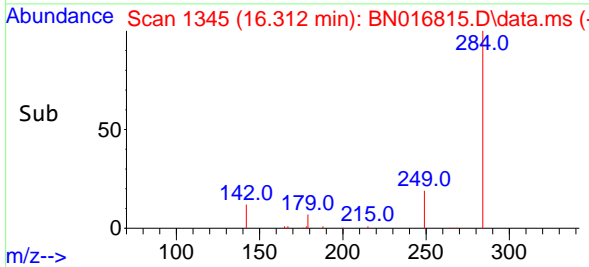
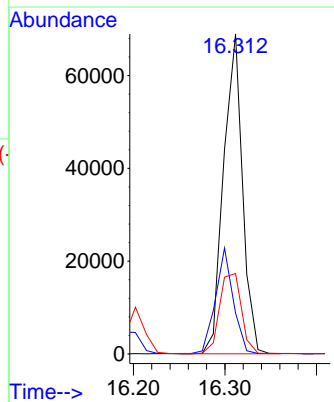


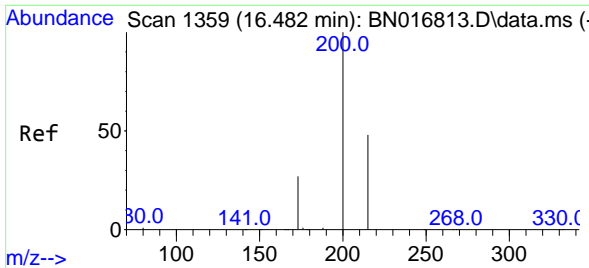
#22  
 Hexachlorobenzene  
 Concen: 1.72 ng  
 RT: 16.312 min Scan# 1345  
 Delta R.T. 0.000 min  
 Lab File: BN016815.D  
 Acq: 07 Oct 2021 18:51



Tgt Ion:284 Resp: 98881

Ion	Ratio	Lower	Upper
284	100		
142	31.0	25.8	38.6
249	29.0	23.3	34.9



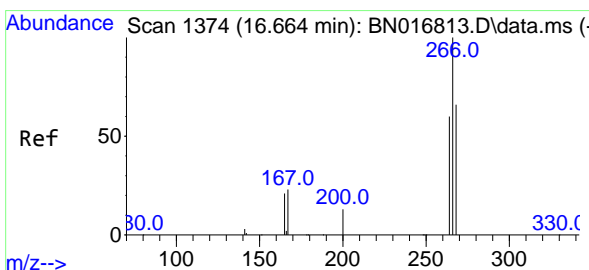
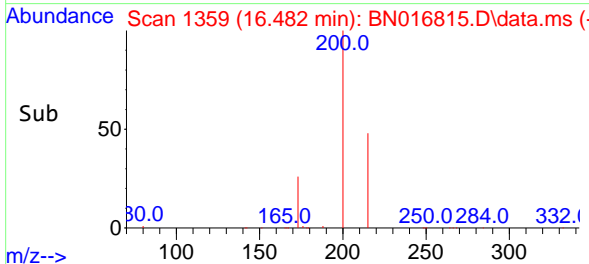
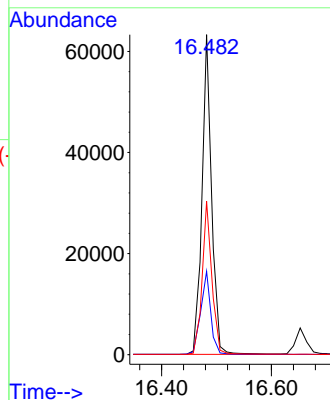
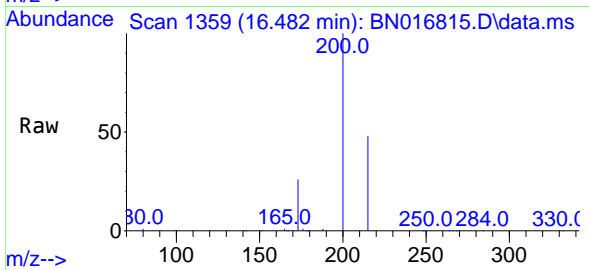


#23  
 Atrazine  
 Concen: 1.92 ng  
 RT: 16.482 min Scan# 1359  
 Delta R.T. 0.000 min  
 Lab File: BN016815.D  
 Acq: 07 Oct 2021 18:51

**Instrument :**  
 BNA\_N  
**ClientSampleId :**  
 SSTDICC1.6

Tgt Ion: 200 Resp: 77473

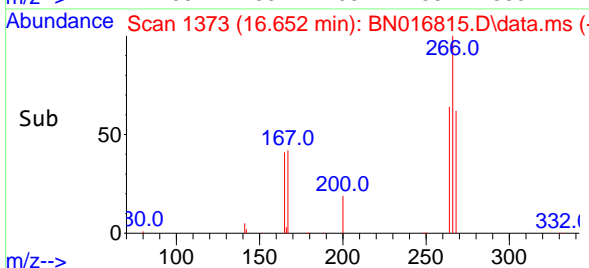
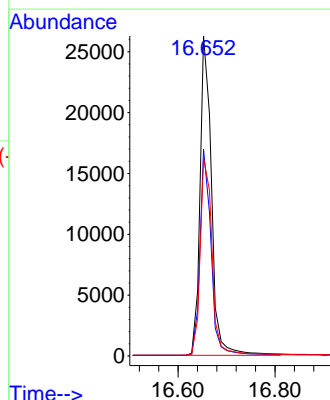
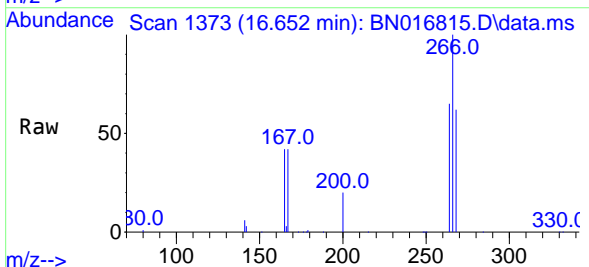
Ion	Ratio	Lower	Upper
200	100		
173	26.1	20.1	30.1
215	47.9	38.8	58.2

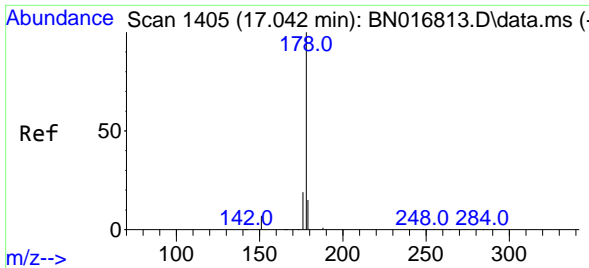


#24  
 Pentachlorophenol  
 Concen: 2.71 ng  
 RT: 16.652 min Scan# 1373  
 Delta R.T. -0.012 min  
 Lab File: BN016815.D  
 Acq: 07 Oct 2021 18:51

Tgt Ion: 266 Resp: 43131

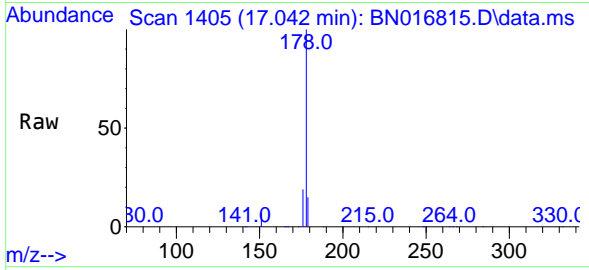
Ion	Ratio	Lower	Upper
266	100		
264	62.8	49.3	73.9
268	64.4	51.8	77.8





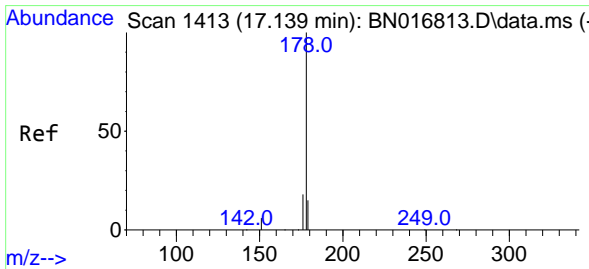
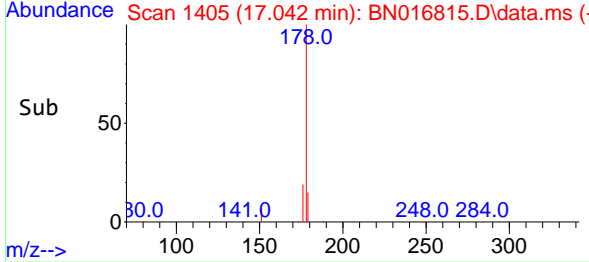
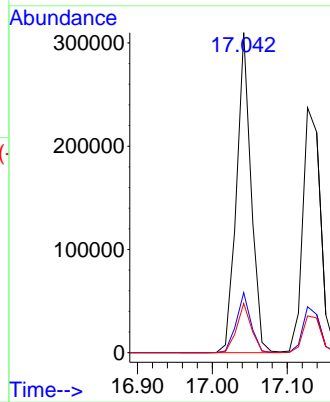
#25  
 Phenanthrene  
 Concen: 1.70 ng  
 RT: 17.042 min Scan# 1405  
 Delta R.T. 0.000 min  
 Lab File: BN016815.D  
 Acq: 07 Oct 2021 18:51

Instrument :  
 BNA\_N  
 ClientSampled :  
 SSTDICC1.6



Tgt Ion:178 Resp: 418201

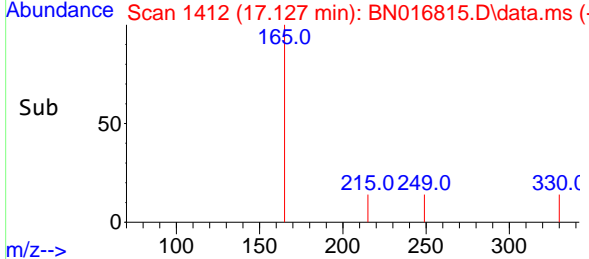
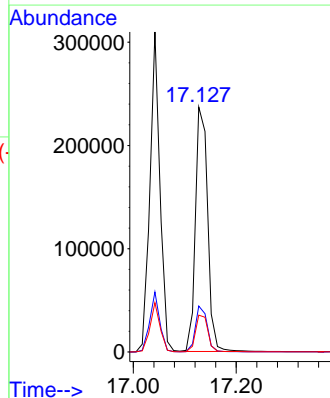
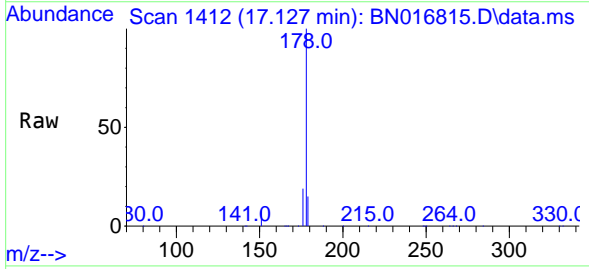
Ion	Ratio	Lower	Upper
178	100		
176	18.8	15.0	22.6
179	15.4	12.4	18.6

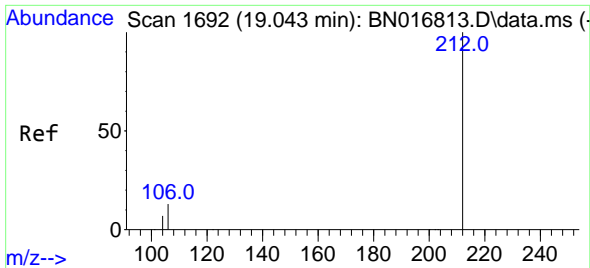


#26  
 Anthracene  
 Concen: 1.79 ng  
 RT: 17.127 min Scan# 1412  
 Delta R.T. -0.012 min  
 Lab File: BN016815.D  
 Acq: 07 Oct 2021 18:51

Tgt Ion:178 Resp: 391600

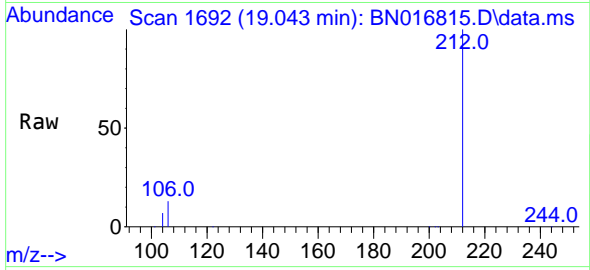
Ion	Ratio	Lower	Upper
178	100		
176	18.1	14.5	21.7
179	15.4	12.2	18.4





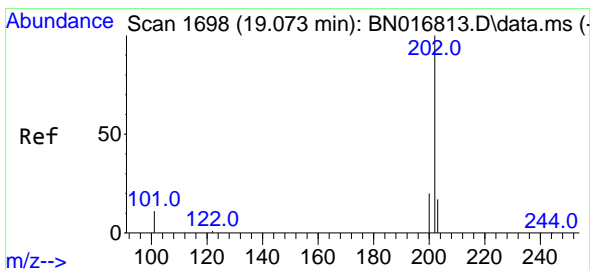
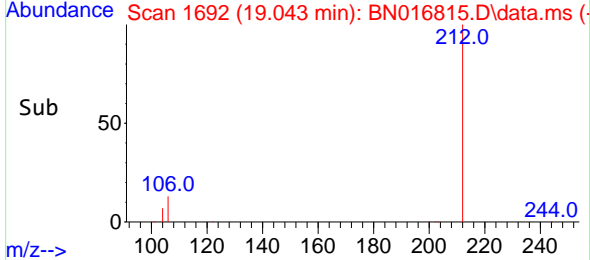
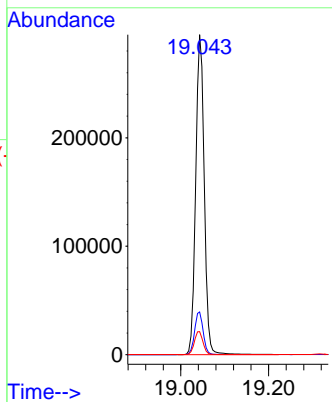
#27  
 Fluoranthene-d10  
 Concen: 1.74 ng  
 RT: 19.043 min Scan# 1692  
 Delta R.T. 0.000 min  
 Lab File: BN016815.D  
 Acq: 07 Oct 2021 18:51

Instrument :  
 BNA\_N  
 ClientSampleId :  
 SSTDICC1.6



Tgt Ion:212 Resp: 397387

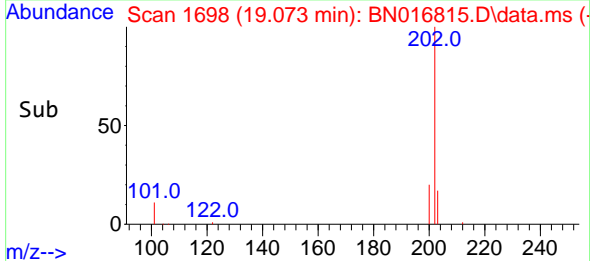
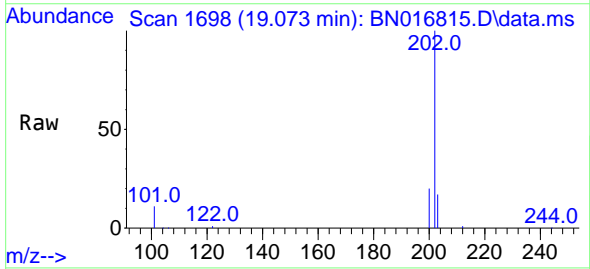
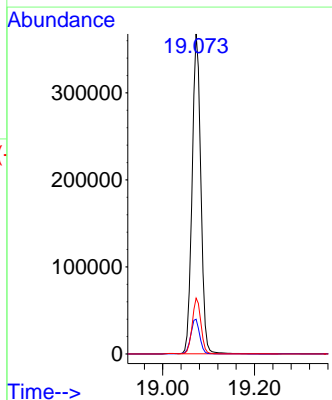
Ion	Ratio	Lower	Upper
212	100		
106	13.5	10.6	16.0
104	7.3	5.8	8.8



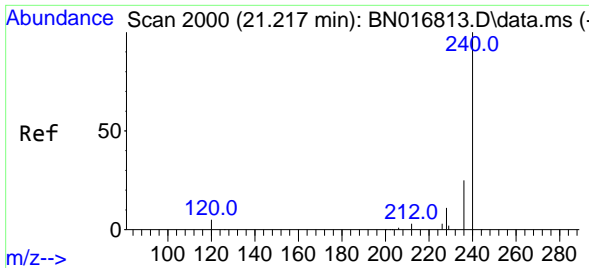
#28  
 Fluoranthene  
 Concen: 1.77 ng  
 RT: 19.073 min Scan# 1698  
 Delta R.T. 0.000 min  
 Lab File: BN016815.D  
 Acq: 07 Oct 2021 18:51

Tgt Ion:202 Resp: 483072

Ion	Ratio	Lower	Upper
202	100		
101	11.2	8.9	13.3
203	17.4	13.8	20.8

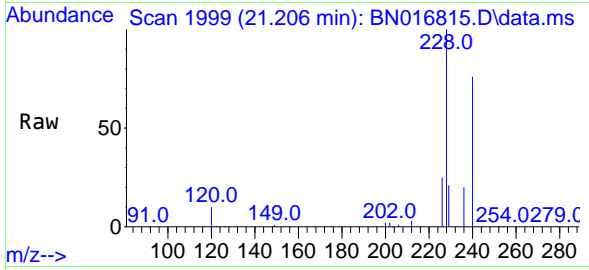




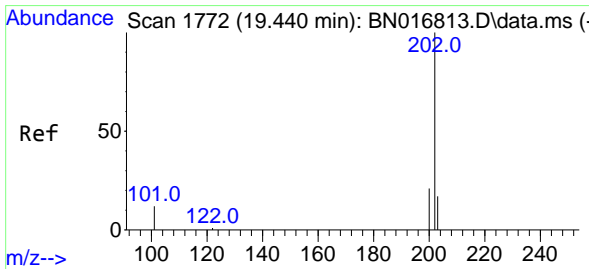
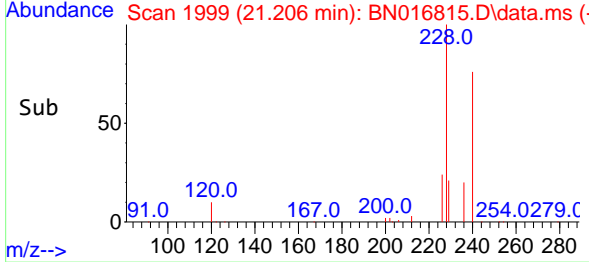
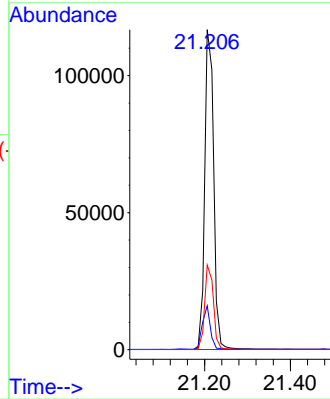


#29  
 Chrysene-d12  
 Concen: 0.40 ng  
 RT: 21.206 min Scan# 1999  
 Delta R.T. -0.010 min  
 Lab File: BN016815.D  
 Acq: 07 Oct 2021 18:51

**Instrument :**  
 BNA\_N  
**ClientSampled :**  
 SSTDICC1.6

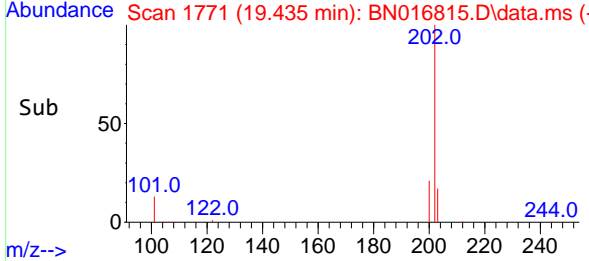
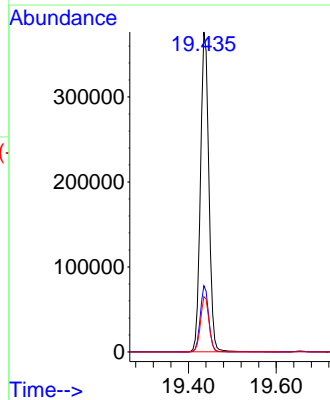
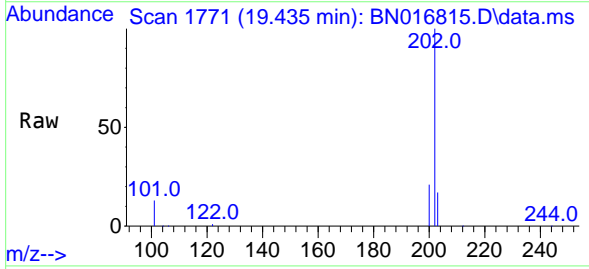


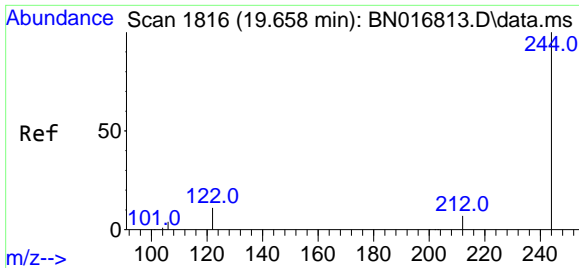
Tgt Ion:240 Resp: 168497  
 Ion Ratio Lower Upper  
 240 100  
 120 13.7 6.6 10.0#  
 236 26.5 20.7 31.1



#30  
 Pyrene  
 Concen: 0.90 ng  
 RT: 19.435 min Scan# 1771  
 Delta R.T. -0.005 min  
 Lab File: BN016815.D  
 Acq: 07 Oct 2021 18:51

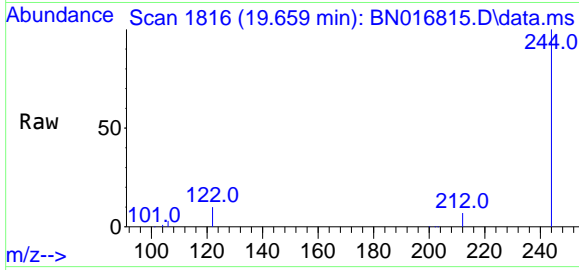
Tgt Ion:202 Resp: 498424  
 Ion Ratio Lower Upper  
 202 100  
 200 20.6 16.5 24.7  
 203 17.6 13.9 20.9



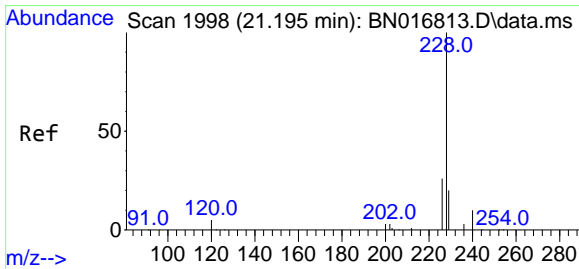
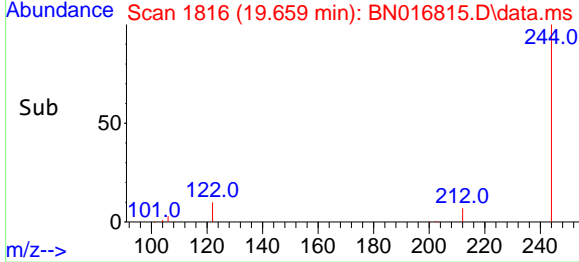
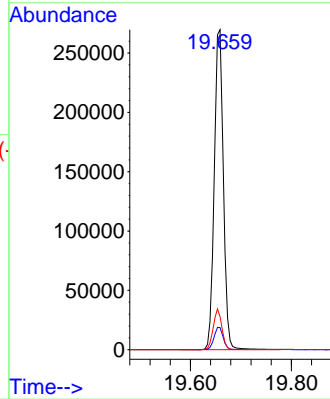


#31  
 Terphenyl-d14  
 Concen: 0.89 ng  
 RT: 19.659 min Scan# 1816  
 Delta R.T. 0.000 min  
 Lab File: BN016815.D  
 Acq: 07 Oct 2021 18:51

**Instrument :**  
 BNA\_N  
**ClientSampled :**  
 SSTDICC1.6

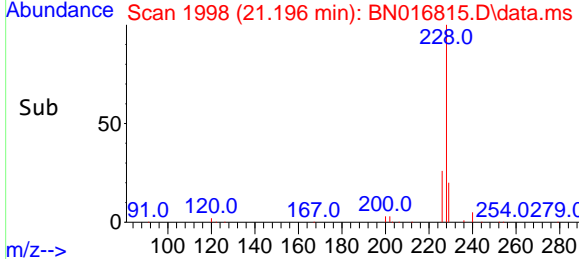
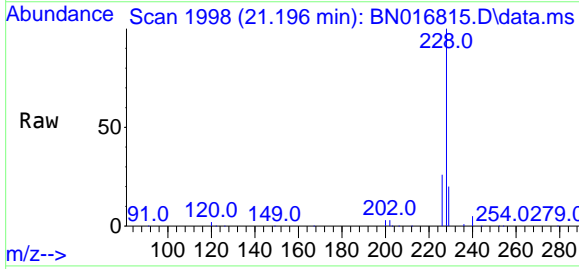
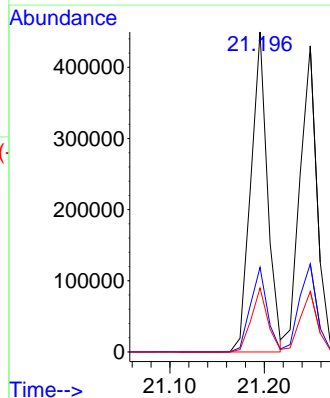


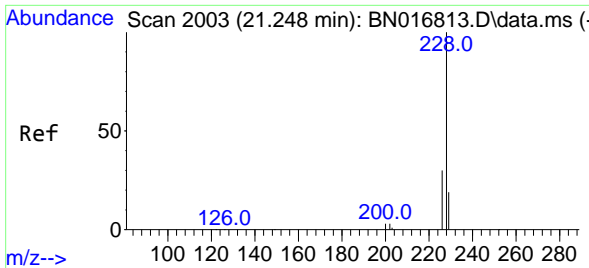
Tgt Ion:244 Resp: 337393  
 Ion Ratio Lower Upper  
 244 100  
 212 6.9 5.8 8.6  
 122 10.4 8.9 13.3



#32  
 Benzo(a)anthracene  
 Concen: 1.05 ng  
 RT: 21.196 min Scan# 1998  
 Delta R.T. 0.000 min  
 Lab File: BN016815.D  
 Acq: 07 Oct 2021 18:51

Tgt Ion:228 Resp: 550394  
 Ion Ratio Lower Upper  
 228 100  
 226 26.4 22.3 33.5  
 229 20.0 15.4 23.0



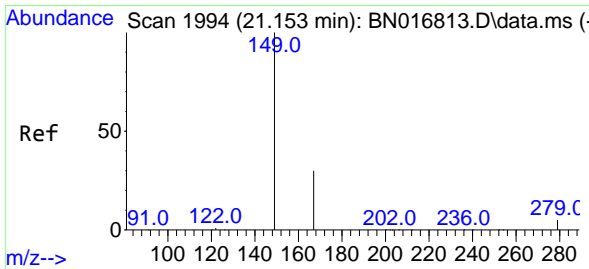
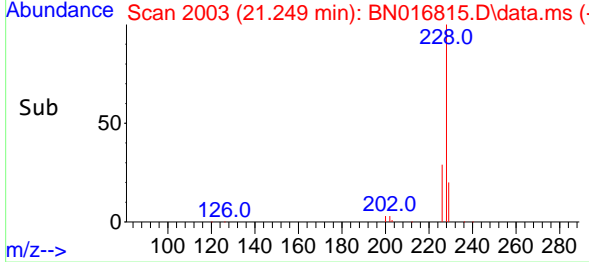
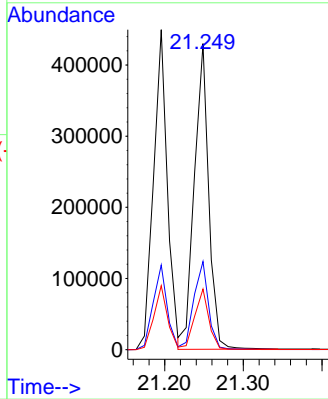
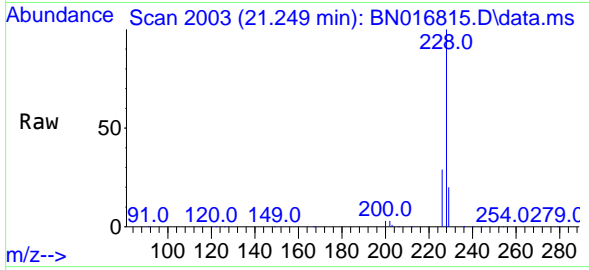


#33  
 Chrysene  
 Concen: 1.03 ng  
 RT: 21.249 min Scan# 2003  
 Delta R.T. 0.000 min  
 Lab File: BN016815.D  
 Acq: 07 Oct 2021 18:51

**Instrument :**  
 BNA\_N  
**ClientSampled :**  
 SSTDICC1.6

Tgt Ion:228 Resp: 544871

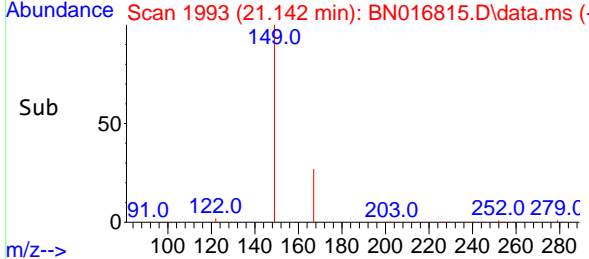
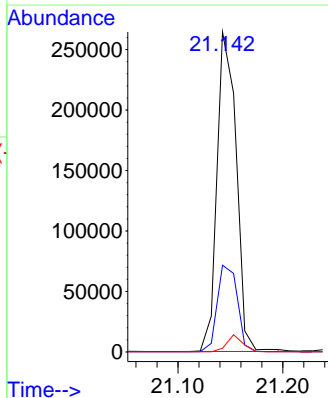
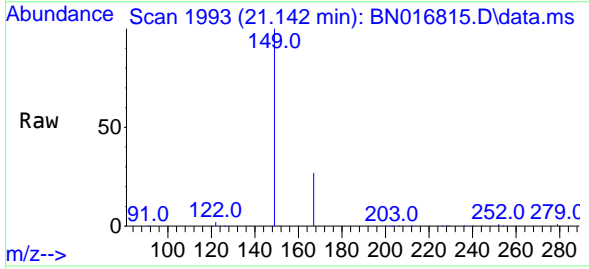
Ion	Ratio	Lower	Upper
228	100		
226	28.8	24.2	36.4
229	19.8	15.4	23.0

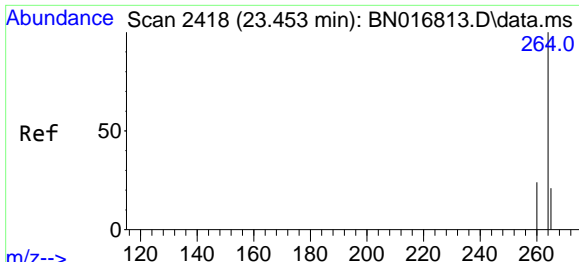


#34  
 Bis(2-ethylhexyl)phthalate  
 Concen: 1.06 ng  
 RT: 21.142 min Scan# 1993  
 Delta R.T. -0.010 min  
 Lab File: BN016815.D  
 Acq: 07 Oct 2021 18:51

Tgt Ion:149 Resp: 337096

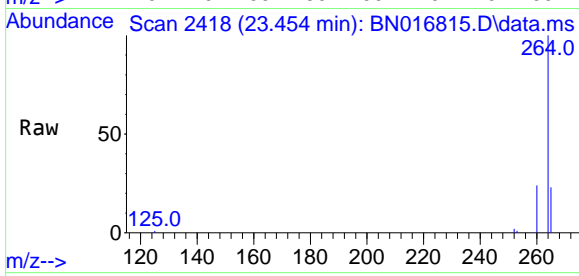
Ion	Ratio	Lower	Upper
149	100		
167	28.3	22.2	33.4
279	4.4	3.4	5.2



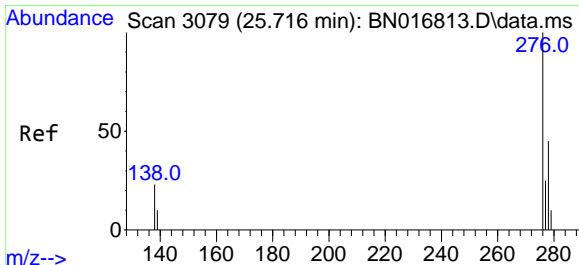
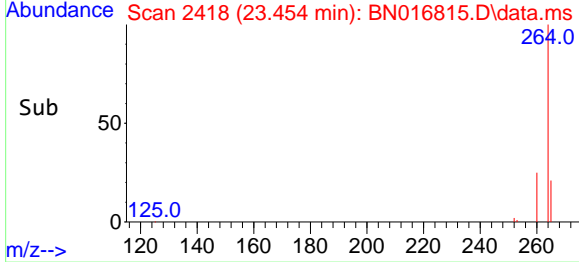
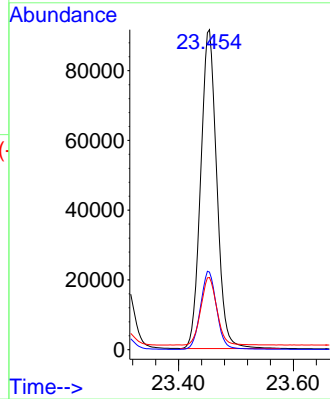


#35  
 Perylene-d12  
 Concen: 0.40 ng  
 RT: 23.454 min Scan# 2418  
 Delta R.T. 0.000 min  
 Lab File: BN016815.D  
 Acq: 07 Oct 2021 18:51

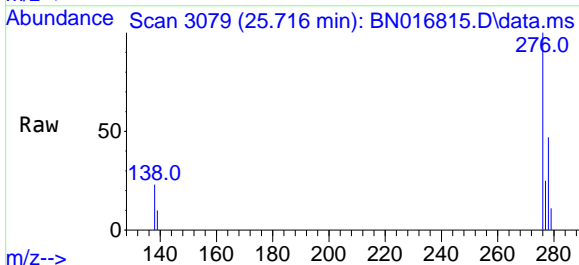
Instrument :  
 BNA\_N  
 ClientSampleId :  
 SSTDICC1.6



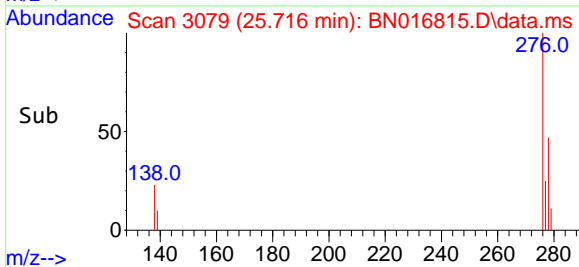
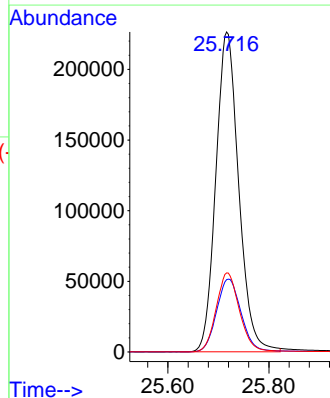
Tgt Ion:264 Resp: 177268  
 Ion Ratio Lower Upper  
 264 100  
 260 24.3 19.8 29.6  
 265 22.5 20.3 30.5

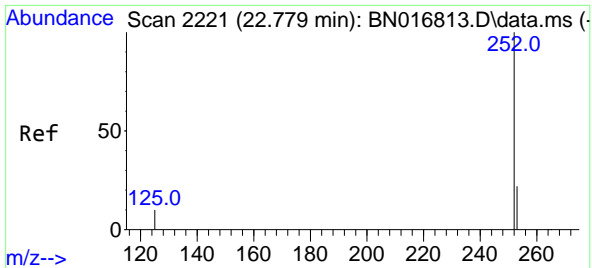


#36  
 Indeno(1,2,3-cd)pyrene  
 Concen: 1.26 ng  
 RT: 25.716 min Scan# 3079  
 Delta R.T. 0.000 min  
 Lab File: BN016815.D  
 Acq: 07 Oct 2021 18:51



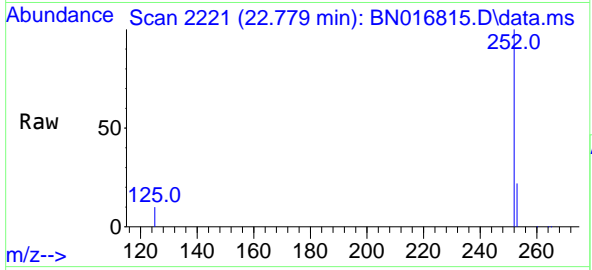
Tgt Ion:276 Resp: 711515  
 Ion Ratio Lower Upper  
 276 100  
 138 24.4 19.2 28.8  
 277 25.1 20.0 30.0





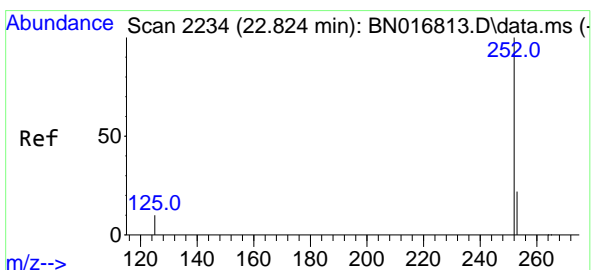
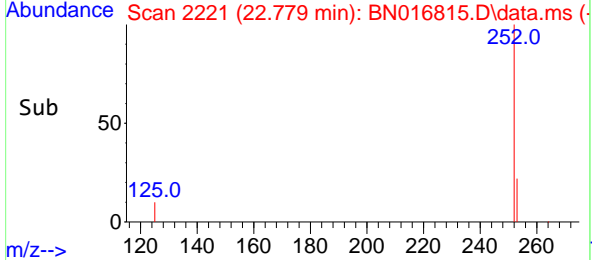
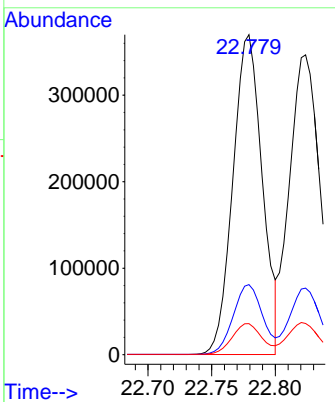
#37  
 Benzo(b)fluoranthene  
 Concen: 1.03 ng  
 RT: 22.779 min Scan# 2221  
 Delta R.T. 0.000 min  
 Lab File: BN016815.D  
 Acq: 07 Oct 2021 18:51

Instrument :  
 BNA\_N  
 ClientSampled :  
 SSTDICC1.6

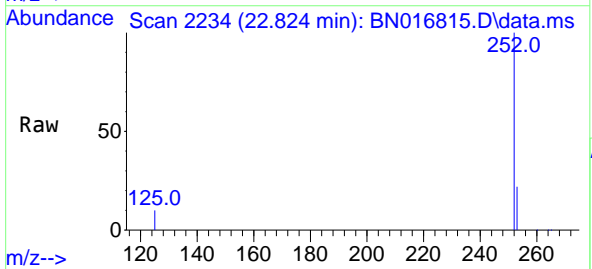


Tgt Ion:252 Resp: 591971

Ion	Ratio	Lower	Upper
252	100		
253	21.9	17.8	26.8
125	9.7	8.3	12.5

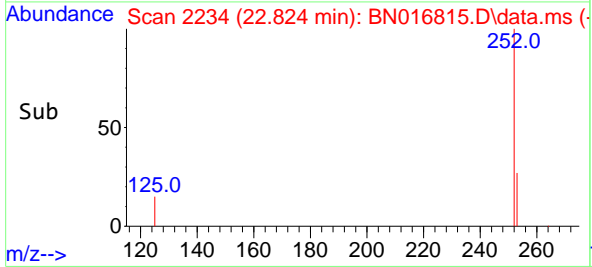
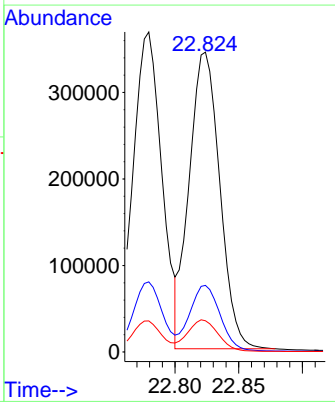


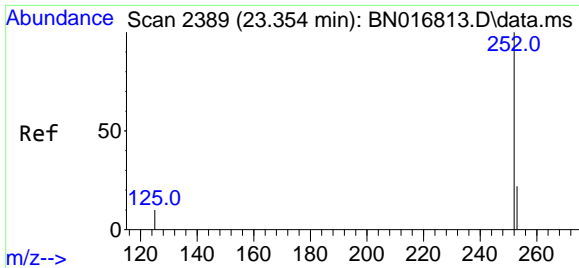
#38  
 Benzo(k)fluoranthene  
 Concen: 1.04 ng  
 RT: 22.824 min Scan# 2234  
 Delta R.T. 0.000 min  
 Lab File: BN016815.D  
 Acq: 07 Oct 2021 18:51



Tgt Ion:252 Resp: 573612

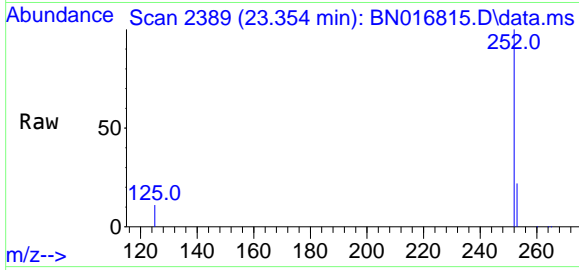
Ion	Ratio	Lower	Upper
252	100		
253	22.2	17.8	26.8
125	10.4	8.5	12.7





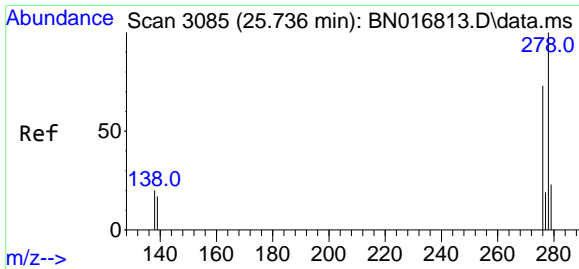
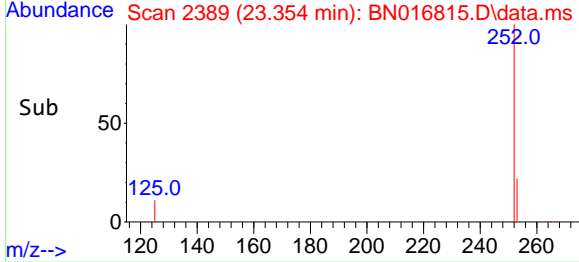
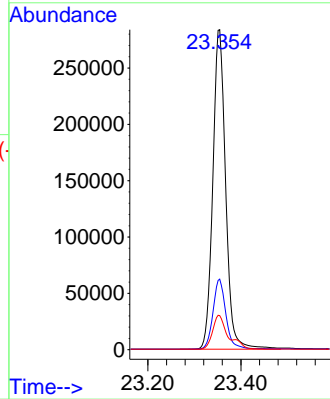
#39  
 Benzo(a)pyrene  
 Concen: 1.06 ng  
 RT: 23.354 min Scan# 2389  
 Delta R.T. 0.000 min  
 Lab File: BN016815.D  
 Acq: 07 Oct 2021 18:51

**Instrument :**  
 BNA\_N  
**ClientSampled :**  
 SSTDICC1.6

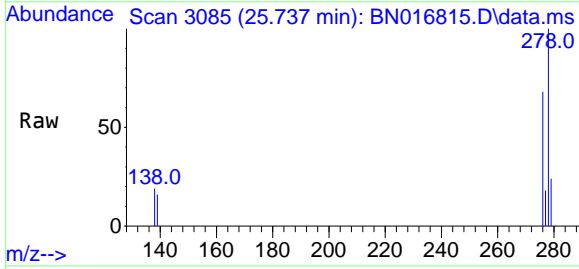


Tgt Ion:252 Resp: 541694

Ion	Ratio	Lower	Upper
252	100		
253	22.1	17.9	26.9
125	10.7	9.4	14.2

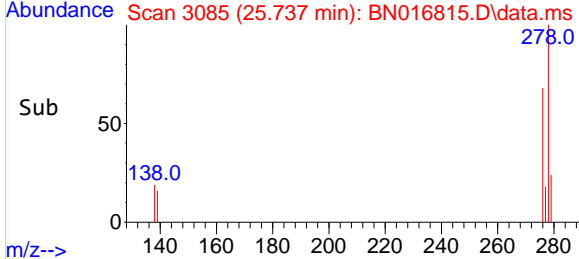
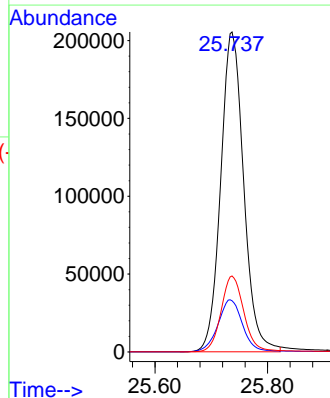


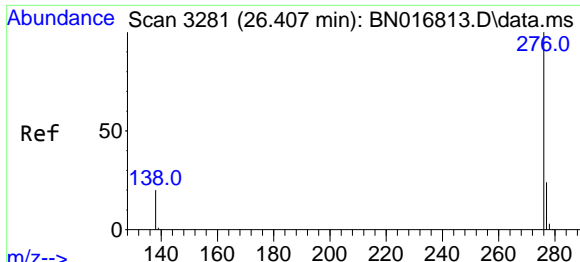
#40  
 Dibenzo(a,h)anthracene  
 Concen: 1.30 ng  
 RT: 25.737 min Scan# 3085  
 Delta R.T. 0.000 min  
 Lab File: BN016815.D  
 Acq: 07 Oct 2021 18:51



Tgt Ion:278 Resp: 581436

Ion	Ratio	Lower	Upper
278	100		
139	16.0	13.1	19.7
279	23.8	19.3	28.9





#41  
 Benzo(g,h,i)perylene  
 Concen: 1.23 ng  
 RT: 26.404 min Scan# 3280  
 Delta R.T. -0.003 min  
 Lab File: BN016815.D  
 Acq: 07 Oct 2021 18:51

**Instrument :**  
 BNA\_N  
**ClientSampleId :**  
 SSTDICC1.6

Tgt Ion:276 Resp: 612312

Ion	Ratio	Lower	Upper
276	100		
277	23.8	19.0	28.4
138	20.7	17.0	25.6

