

Data Path : Z:\SVOASRV\HPCHEM1\BNA N\DATA\BN101119\
 Data File : BN008072.D
 Acq On : 11 Oct 2019 11:57
 Operator : JU
 Sample : K5050-05
 Misc :
 ALS Vial : 7 Sample Multiplier: 1

Instrument :
 BNA_N
ClientSampled :
 JLMB9

Manual Integrations
APPROVED
 mohammad
 10/15/2019 7:56:24 AM

Quant Time: Oct 11 19:18:04 2019
 Quant Method : Z:\SVOASRV\HPCHEM1\BNA N\METHODS\SOM-EPA-SIM-BN101019.M
 Quant Title : ASP BNA STANDARDS FOR 5 POINT CALIBRATION
 QLast Update : Fri Oct 11 19:05:54 2019
 Response via : Initial Calibration

Internal Standards	R.T.	QIon	Response	Conc	Units	Dev(Min)
1) 1,4-Dichlorobenzene-d4	7.63	152	2319	0.40	ng/ul	0.00
2) Naphthalene-d8	10.40	136	10629	0.40	ng/ul	0.00
6) Acenaphthene-d10	14.26	164	6873	0.40	ng/ul	0.00
10) Phenanthrene-d10	17.01	188	15530m	0.40	ng/ul	0.00
16) Chrysene-d12	21.21	240	14731m	0.40	ng/ul	0.00
20) Perylene-d12	23.40	264	21508	0.40	ng/ul	0.00
System Monitoring Compounds						
4) 2-Methylnaphthalene-d10	12.00	152	3369	0.19	ng/ul	0.00
14) Fluoranthene-d10	19.05	212	10655m	0.20	ng/ul	0.00
Target Compounds						
					Ovalue	
3) Naphthalene	10.45	128	749	0.025	ng/ul#	71
5) 2-Methylnaphthalene	12.08	142	687	0.033	ng/ul	98
12) Phenanthrene	17.06	178	1364m	0.030	ng/ul	

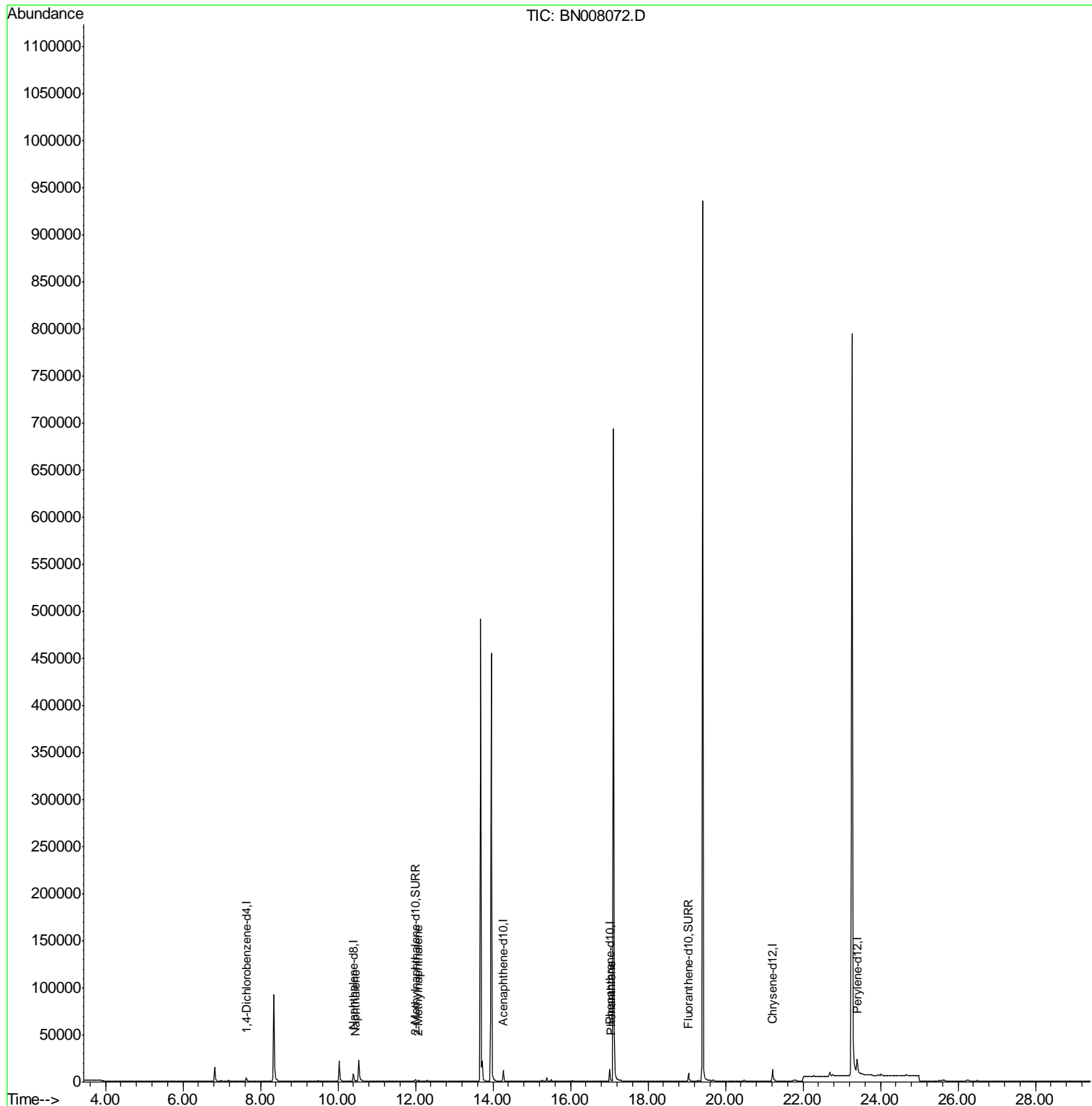
(#) = qualifier out of range (m) = manual integration (+) = signals summed

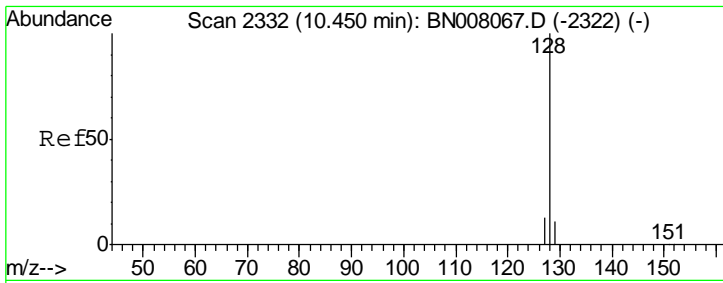
Data Path : Z:\SVOASRV\HPCHEM1\BNA N\DATA\BN101119\
 Data File : BN008072.D
 Acq On : 11 Oct 2019 11:57
 Operator : JU
 Sample : K5050-05
 Misc :
 ALS Vial : 7 Sample Multiplier: 1

Instrument :
 BNA_N
ClientSampled :
 JLMB9

Manual Integrations
APPROVED
 mohammad
 10/15/2019 7:56:24 AM

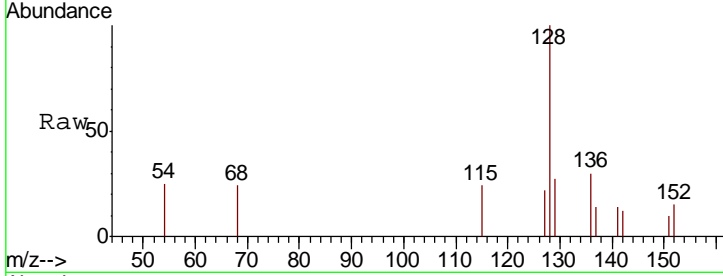
Quant Time: Oct 11 19:18:04 2019
 Quant Method : Z:\SVOASRV\HPCHEM1\BNA N\METHODS\SOM-EPA-SIM-BN101019.M
 Quant Title : ASP BNA STANDARDS FOR 5 POINT CALIBRATION
 QLast Update : Fri Oct 11 19:05:54 2019
 Response via : Initial Calibration





#3
 Naphthalene
 Concen: 0.025 ng/ul
 RT: 10.45 min Scan# 2332
 Delta R.T. -0.01 min
 Lab File: BN008072.D
 Acq: 11 Oct 2019 11:57

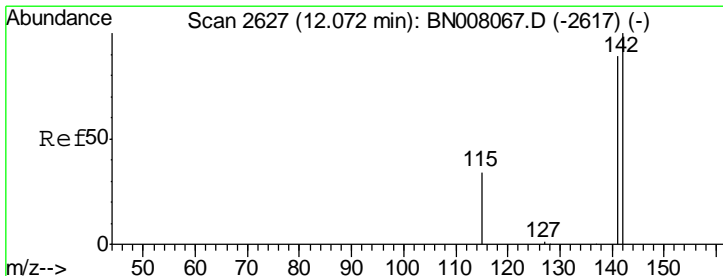
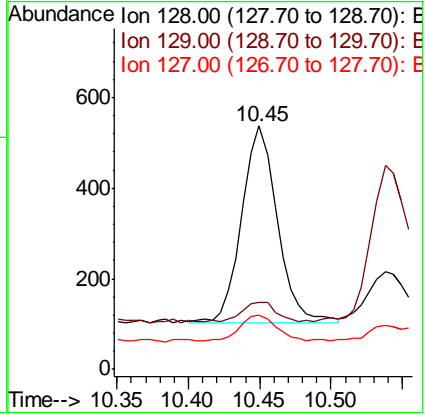
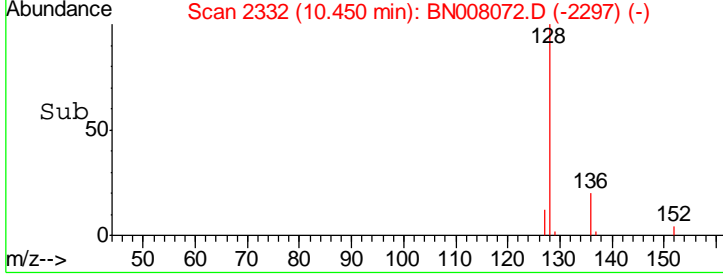
Instrument :
 BNA_N
 ClientSampled :
 JLMB9



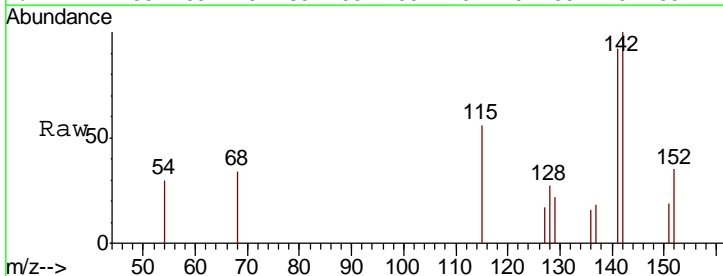
Tgt Ion	Resp	Lower	Upper
128	100		
129	27.4	9.8	14.8#
127	22.2	11.1	16.7#

Manual Integrations
 APPROVED

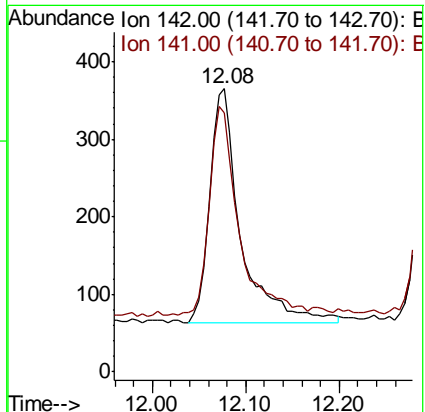
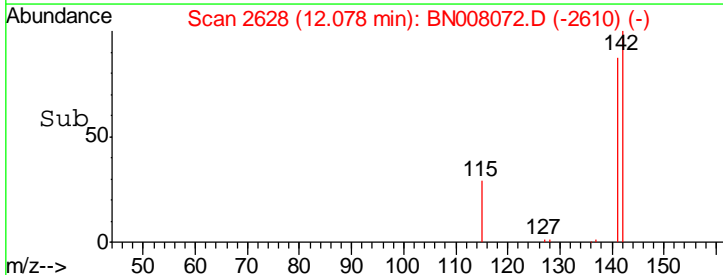
mohammad
 10/15/2019 7:56:24 AM

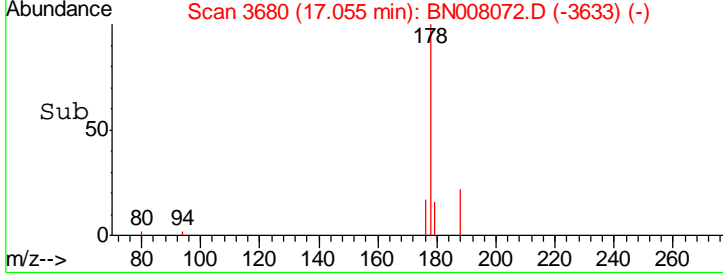
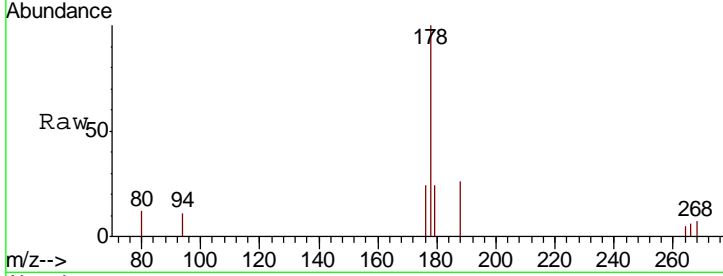
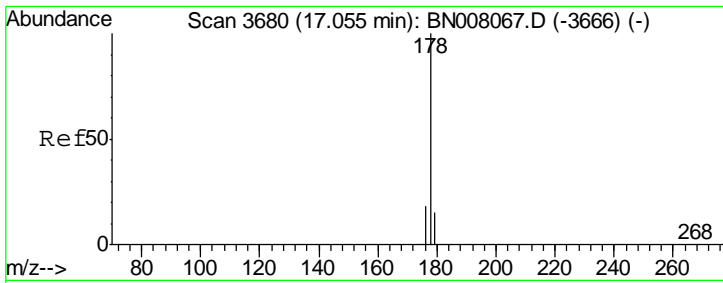


#5
 2-Methylnaphthalene
 Concen: 0.033 ng/ul
 RT: 12.08 min Scan# 2628
 Delta R.T. 0.00 min
 Lab File: BN008072.D
 Acq: 11 Oct 2019 11:57



Tgt Ion	Resp	Lower	Upper
142	100		
141	87.6	71.4	107.2





#12
 Phenanthrene
 Concen: 0.030 ng/ul m
 RT: 17.06 min Scan# 3680
 Delta R.T. 0.00 min
 Lab File: BN008072.D
 Acq: 11 Oct 2019 11:57

Tot Ion	Ratio	Lower	Upper
178	100		
179	24.3	12.8	19.2#
176	24.0	15.4	23.2#

Instrument :
 BNA_N
 ClientSampled :
 JLMB9

Manual Integrations
APPROVED
 mohammad
 10/15/2019 7:56:24 AM

