

Data Path : Z:\svoasrv\HPCHEM1\BNA_N\Data\BN101223\
 Data File : BN028264.D
 Acq On : 12 Oct 2023 17:09
 Operator : MA/JU
 Sample : SSTDICC0.2
 Misc :
 ALS Vial : 4 Sample Multiplier: 1

Instrument :
 BNA_N
 ClientSampleId :
 SSTDICC0.2

Quant Time: Oct 13 02:12:15 2023
 Quant Method : Z:\svoasrv\HPCHEM1\BNA_N\Methods\8270-SIM-BN101223.M
 Quant Title : ASP BNA STANDARDS FOR 5 POINT CALIBRATION
 QLast Update : Fri Oct 13 02:03:40 2023
 Response via : Initial Calibration

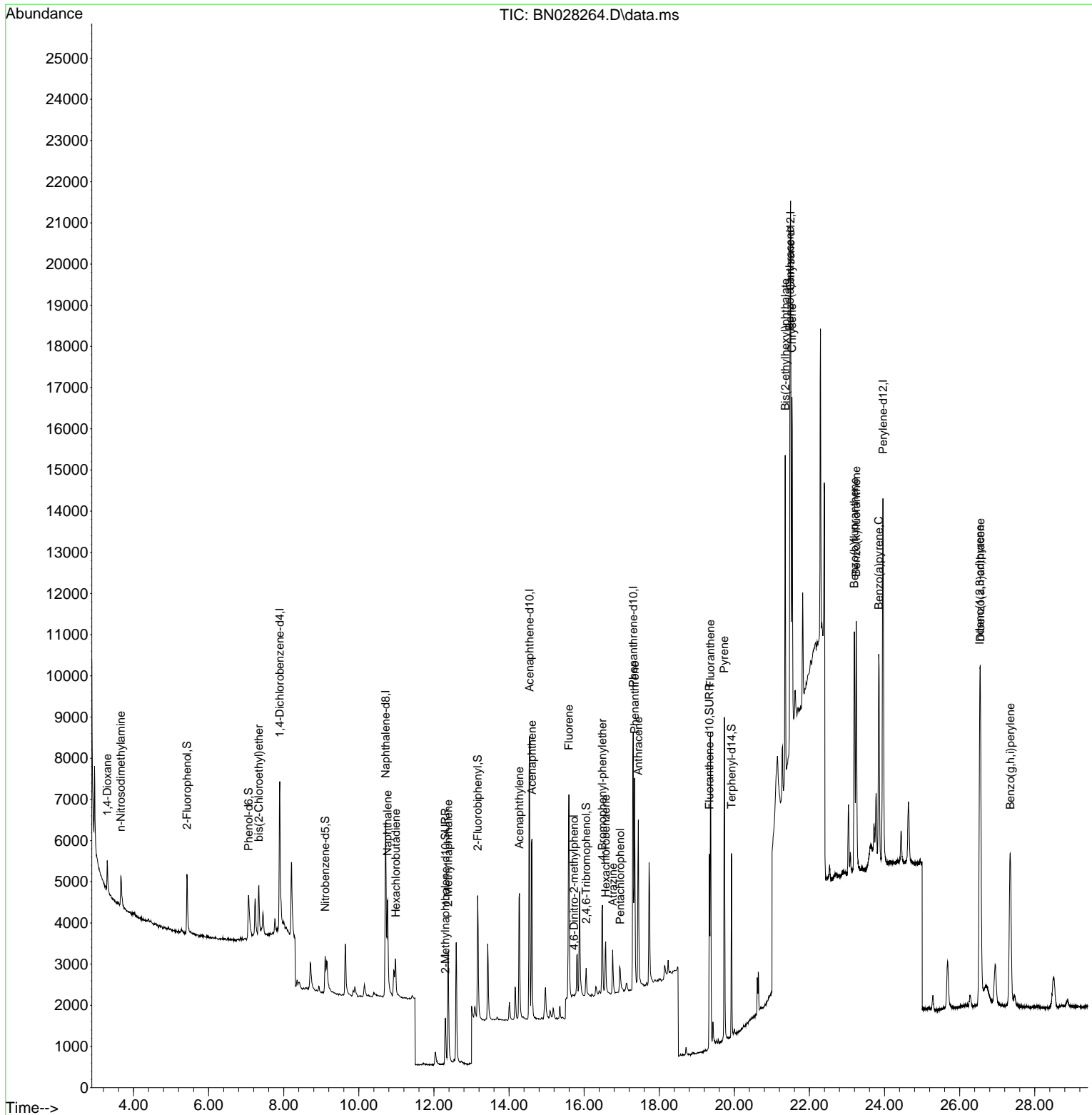
Compound	R.T.	QIon	Response	Conc	Units	Dev(Min)	
Internal Standards							
1) 1,4-Dichlorobenzene-d4	7.893	152	2100	0.400	ng	0.00	
7) Naphthalene-d8	10.714	136	7239	0.400	ng	# 0.00	
13) Acenaphthene-d10	14.544	164	4545	0.400	ng	0.00	
19) Phenanthrene-d10	17.306	188	10153	0.400	ng	0.00	
29) Chrysene-d12	21.497	240	10798	0.400	ng	0.00	
35) Perylene-d12	23.958	264	12724	0.400	ng	# 0.00	
System Monitoring Compounds							
4) 2-Fluorophenol	5.423	112	1534	0.235	ng	0.00	
5) Phenol-d6	7.062	99	1749	0.218	ng	0.00	
8) Nitrobenzene-d5	9.102	82	1320	0.206	ng	0.00	
11) 2-Methylnaphthalene-d10	12.302	152	2205	0.203	ng	0.00	
14) 2,4,6-Tribromophenol	16.053	330	459	0.207	ng	0.00	
15) 2-Fluorobiphenyl	13.165	172	3246	0.203	ng	0.00	
27) Fluoranthene-d10	19.337	212	5427	0.200	ng	0.00	
31) Terphenyl-d14	19.922	244	4646	0.203	ng	0.00	
Target Compounds							
2) 1,4-Dioxane	3.299	88	523	0.206	ng	# 90	Qvalue
3) n-Nitrosodimethylamine	3.660	42	574	0.207	ng	# 90	
6) bis(2-Chloroethyl)ether	7.337	93	1224	0.198	ng	99	
9) Naphthalene	10.767	128	3806	0.203	ng	# 94	
10) Hexachlorobutadiene	10.981	225	669	0.208	ng	# 99	
12) 2-Methylnaphthalene	12.377	142	2659	0.199	ng	98	
16) Acenaphthylene	14.277	152	4054	0.199	ng	99	
17) Acenaphthene	14.608	154	2568	0.200	ng	99	
18) Fluorene	15.593	166	3386	0.200	ng	100	
20) 4,6-Dinitro-2-methylph...	15.730	198	60	0.269	ng	# 1	
21) 4-Bromophenyl-phenylether	16.487	248	1017	0.194	ng	# 93	
22) Hexachlorobenzene	16.574	284	1077	0.200	ng	97	
23) Atrazine	16.760	200	994	0.203	ng	# 93	
24) Pentachlorophenol	16.959	266	474	0.193	ng	91	
25) Phenanthrene	17.343	178	5539	0.199	ng	99	
26) Anthracene	17.443	178	5095	0.192	ng	99	
28) Fluoranthene	19.365	202	7170	0.205	ng	99	
30) Pyrene	19.732	202	7607	0.206	ng	99	
32) Benzo(a)anthracene	21.480	228	7994	0.208	ng	95	
33) Chrysene	21.533	228	7281	0.198	ng	95	
34) Bis(2-ethylhexyl)phtha...	21.354	149	7017	0.239	ng	99	
36) Indeno(1,2,3-cd)pyrene	26.536	276	10748	0.210	ng	100	
37) Benzo(b)fluoranthene	23.195	252	8224	0.207	ng	# 75	
38) Benzo(k)fluoranthene	23.247	252	8388	0.207	ng	# 75	
39) Benzo(a)pyrene	23.846	252	8035	0.203	ng	# 73	
40) Dibenzo(a,h)anthracene	26.551	278	8650	0.208	ng	# 82	
41) Benzo(g,h,i)perylene	27.349	276	8965	0.208	ng	# 89	

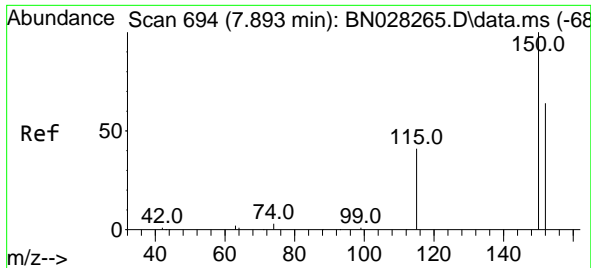
(#) = qualifier out of range (m) = manual integration (+) = signals summed

Data Path : Z:\svoasrv\HPCHEM1\BNA_N\Data\BN101223\
 Data File : BN028264.D
 Acq On : 12 Oct 2023 17:09
 Operator : MA/JU
 Sample : SSTDICC0.2
 Misc :
 ALS Vial : 4 Sample Multiplier: 1

Instrument :
 BNA_N
 ClientSampleId :
 SSTDICC0.2

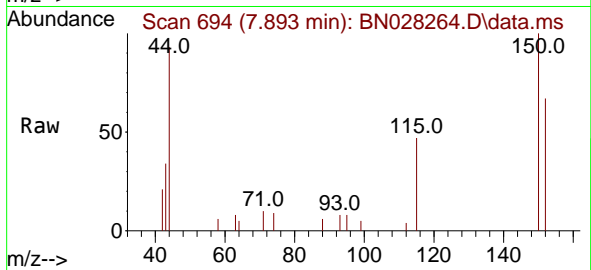
Quant Time: Oct 13 02:12:15 2023
 Quant Method : Z:\svoasrv\HPCHEM1\BNA_N\Methods\8270-SIM-BN101223.M
 Quant Title : ASP BNA STANDARDS FOR 5 POINT CALIBRATION
 QLast Update : Fri Oct 13 02:03:40 2023
 Response via : Initial Calibration



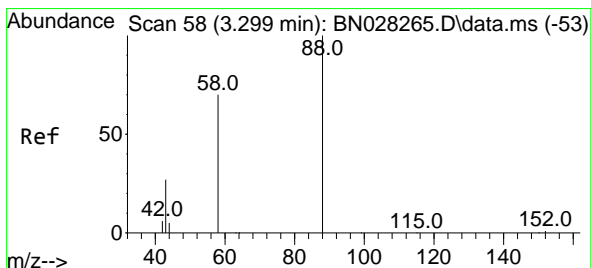
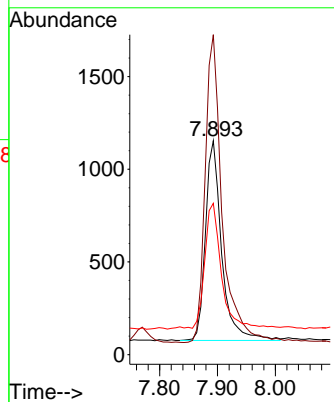
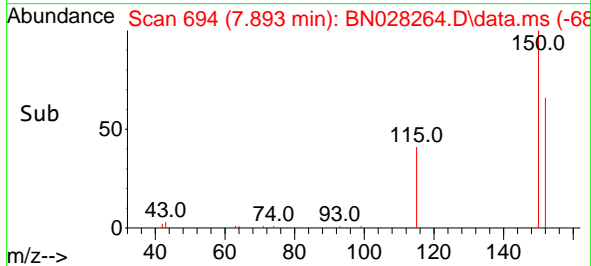


#1
 1,4-Dichlorobenzene-d4
 Concen: 0.400 ng
 RT: 7.893 min Scan# 694
 Delta R.T. -0.000 min
 Lab File: BN028264.D
 Acq: 12 Oct 2023 17:09

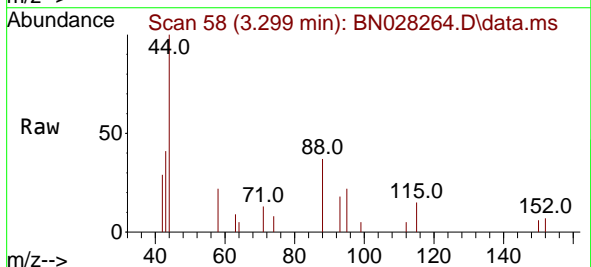
Instrument :
 BNA_N
 ClientSampleId :
 SSTDICC0.2



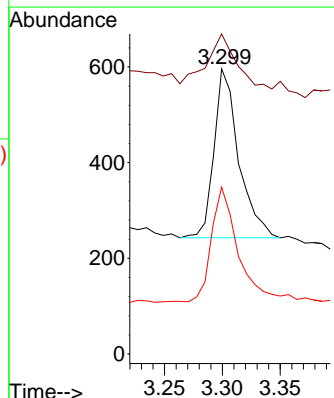
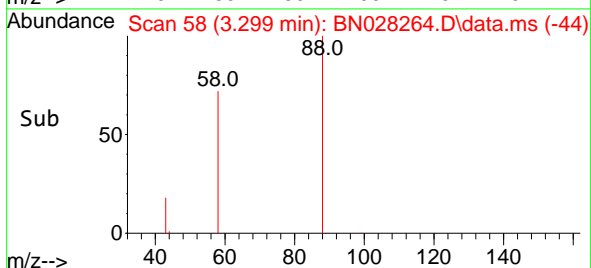
Tgt Ion:152 Resp: 2100
 Ion Ratio Lower Upper
 152 100
 150 149.6 121.6 182.4
 115 70.7 54.3 81.5

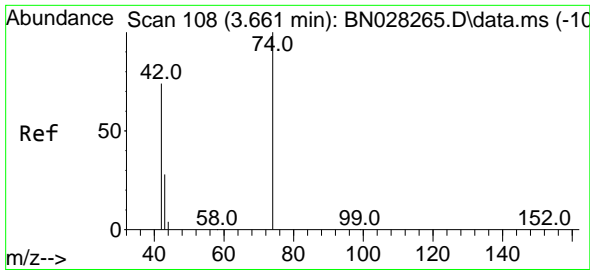


#2
 1,4-Dioxane
 Concen: 0.206 ng
 RT: 3.299 min Scan# 58
 Delta R.T. -0.000 min
 Lab File: BN028264.D
 Acq: 12 Oct 2023 17:09



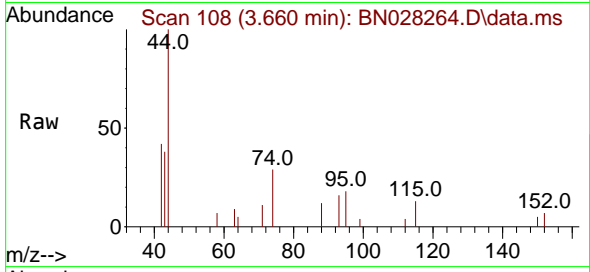
Tgt Ion: 88 Resp: 523
 Ion Ratio Lower Upper
 88 100
 43 44.9 26.6 39.8#
 58 72.8 55.4 83.0





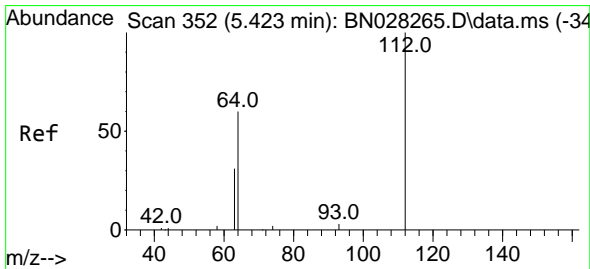
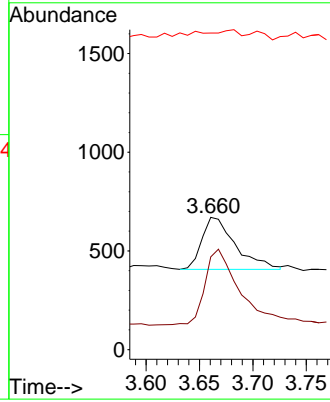
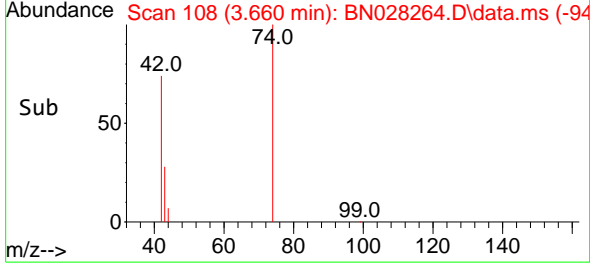
#3
 n-Nitrosodimethylamine
 Concen: 0.207 ng
 RT: 3.660 min Scan# 108
 Delta R.T. -0.000 min
 Lab File: BN028264.D
 Acq: 12 Oct 2023 17:09

Instrument : BNA_N
 ClientSampleId : SSTDICC0.2

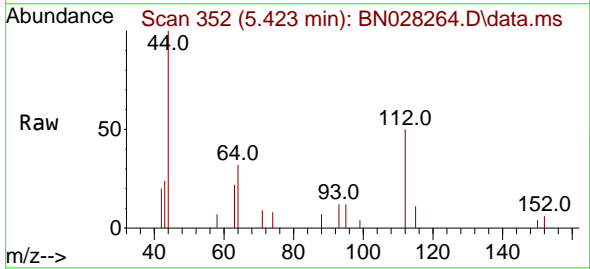


Tgt Ion: 42 Resp: 574

Ion	Ratio	Lower	Upper
42	100		
74	151.2	112.6	168.8
44	0.0	7.8	11.6

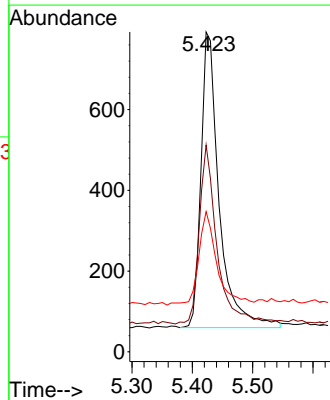
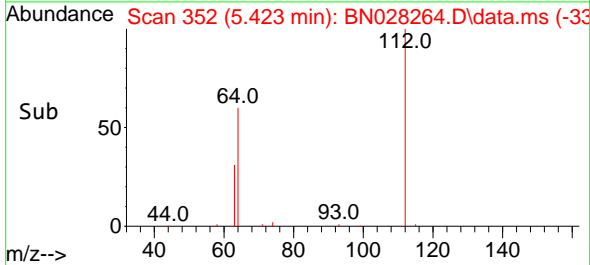


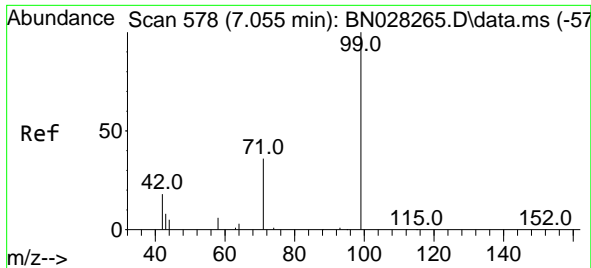
#4
 2-Fluorophenol
 Concen: 0.235 ng
 RT: 5.423 min Scan# 352
 Delta R.T. -0.000 min
 Lab File: BN028264.D
 Acq: 12 Oct 2023 17:09



Tgt Ion: 112 Resp: 1534

Ion	Ratio	Lower	Upper
112	100		
64	59.5	46.9	70.3
63	31.6	25.0	37.4

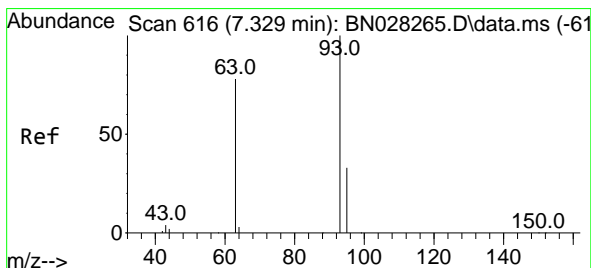
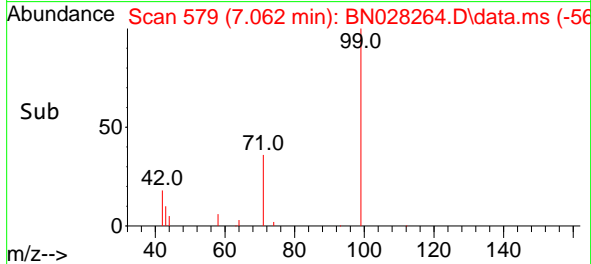
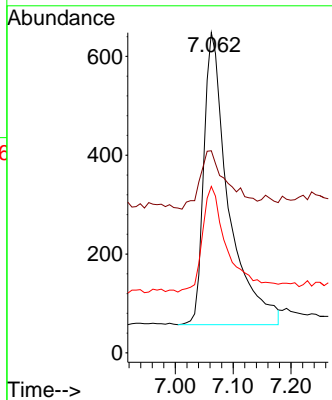
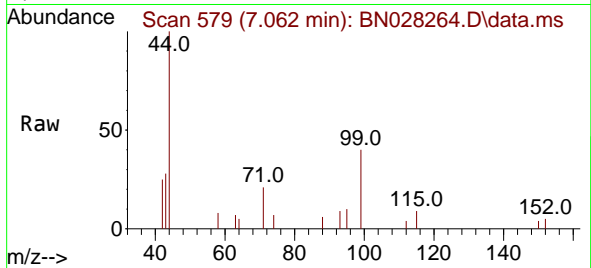




#5
 Phenol-d6
 Concen: 0.218 ng
 RT: 7.062 min Scan# 51
 Delta R.T. 0.007 min
 Lab File: BN028264.D
 Acq: 12 Oct 2023 17:09

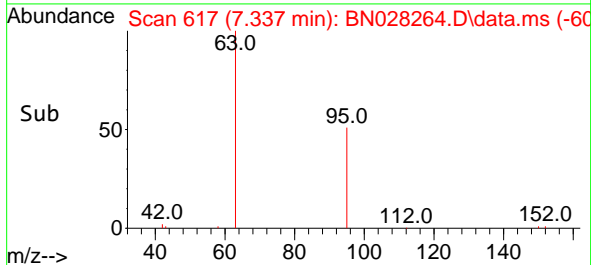
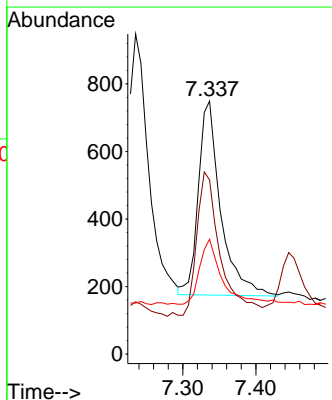
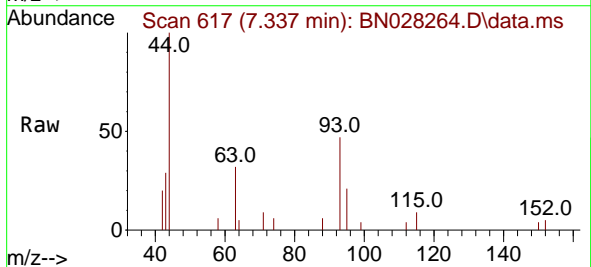
Instrument :
 BNA_N
 ClientSampleId :
 SSTDICC0.2

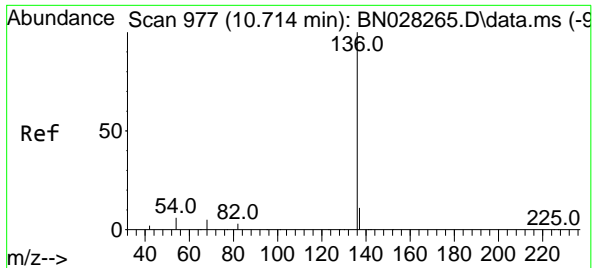
Tgt Ion	Resp	Lower	Upper
99	1749		
99	100		
42	22.5	15.9	23.9
71	37.6	28.6	42.8



#6
 bis(2-Chloroethyl)ether
 Concen: 0.198 ng
 RT: 7.337 min Scan# 617
 Delta R.T. 0.007 min
 Lab File: BN028264.D
 Acq: 12 Oct 2023 17:09

Tgt Ion	Resp	Lower	Upper
93	1224		
93	100		
63	79.6	62.6	93.8
95	33.5	27.2	40.8

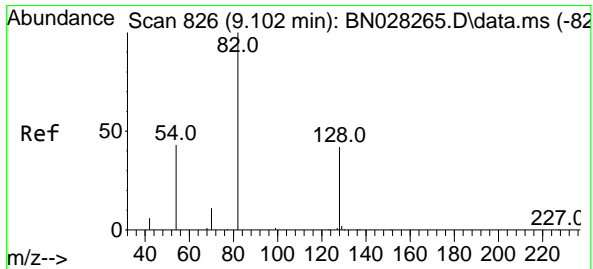
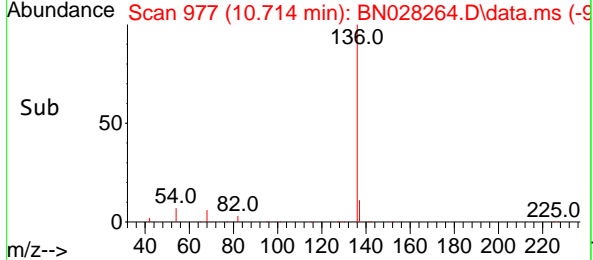
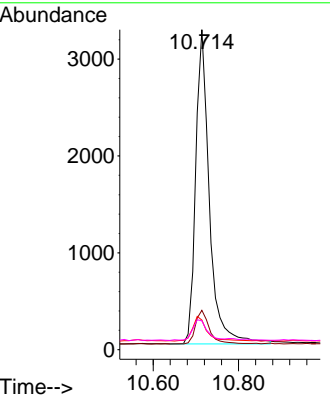
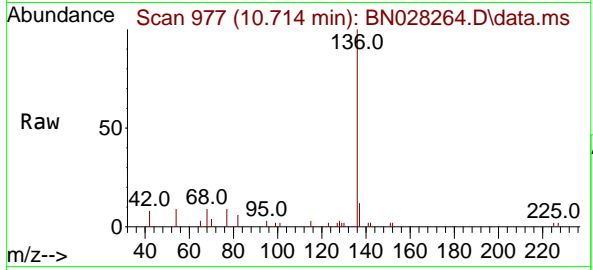




#7
 Naphthalene-d8
 Concen: 0.400 ng
 RT: 10.714 min Scan# 91
 Delta R.T. -0.000 min
 Lab File: BN028264.D
 Acq: 12 Oct 2023 17:09

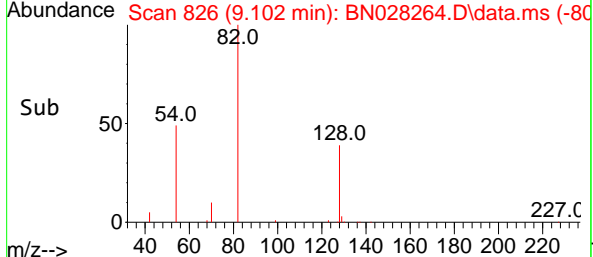
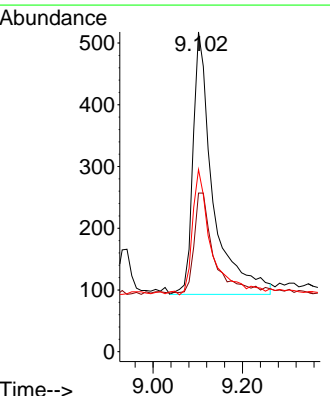
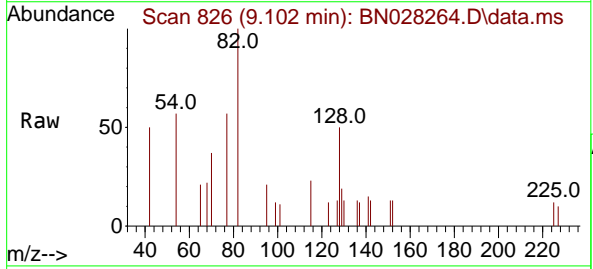
Instrument : BNA_N
 ClientSampleId : SSTDICC0.2

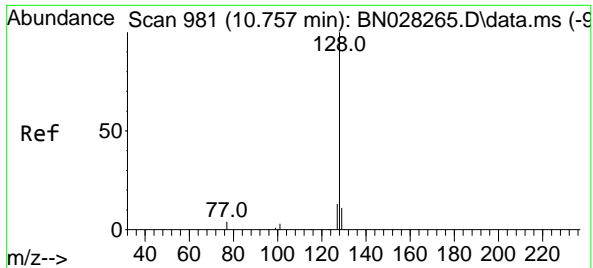
Tgt Ion	Resp	Lower	Upper
136	100		
137	12.3	9.8	14.8
54	9.2	6.2	9.4
68	9.0	5.7	8.5



#8
 Nitrobenzene-d5
 Concen: 0.206 ng
 RT: 9.102 min Scan# 826
 Delta R.T. -0.000 min
 Lab File: BN028264.D
 Acq: 12 Oct 2023 17:09

Tgt Ion	Resp	Lower	Upper
82	100		
128	49.6	36.8	55.2
54	56.9	37.4	56.2



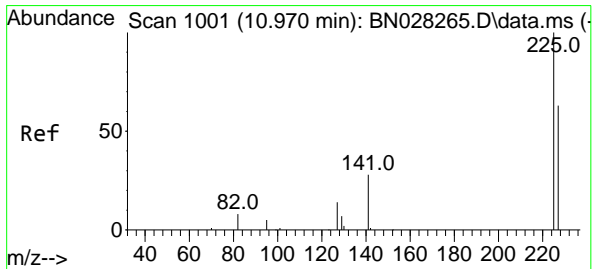
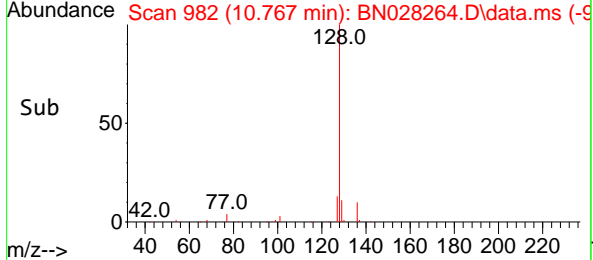
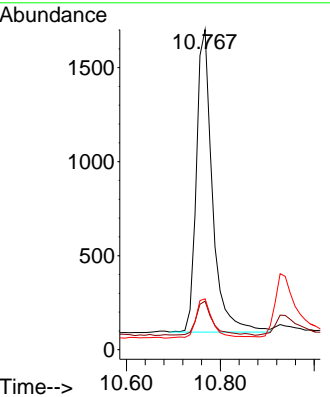
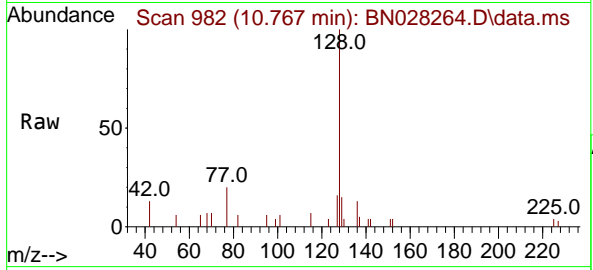


#9
 Naphthalene
 Concen: 0.203 ng
 RT: 10.767 min Scan# 91
 Delta R.T. 0.011 min
 Lab File: BN028264.D
 Acq: 12 Oct 2023 17:09

Instrument : BNA_N
 ClientSampleId : SSTDICC0.2

Tgt Ion:128 Resp: 3806

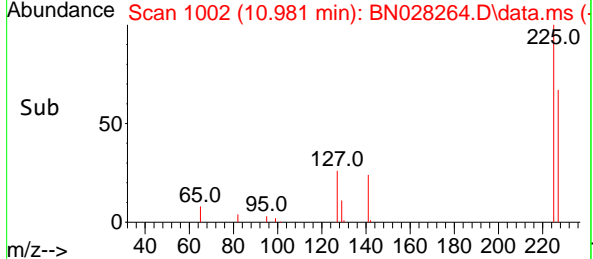
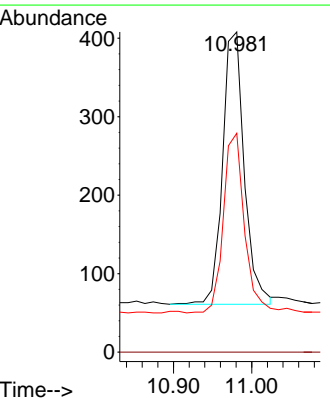
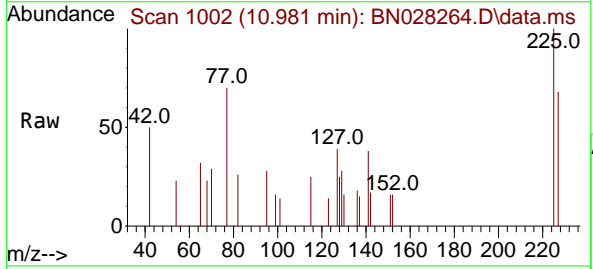
Ion	Ratio	Lower	Upper
128	100		
129	15.2	9.8	14.6#
127	15.9	11.4	17.0

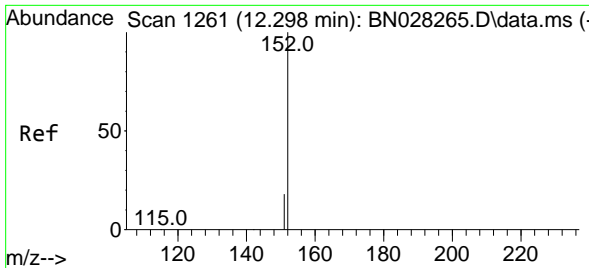


#10
 Hexachlorobutadiene
 Concen: 0.208 ng
 RT: 10.981 min Scan# 1002
 Delta R.T. 0.011 min
 Lab File: BN028264.D
 Acq: 12 Oct 2023 17:09

Tgt Ion:225 Resp: 669

Ion	Ratio	Lower	Upper
225	100		
223	0.0	0.0	0.0
227	63.8	51.6	77.4

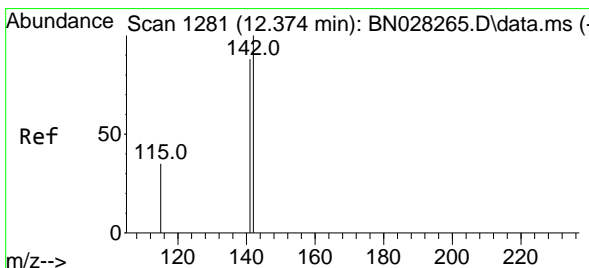
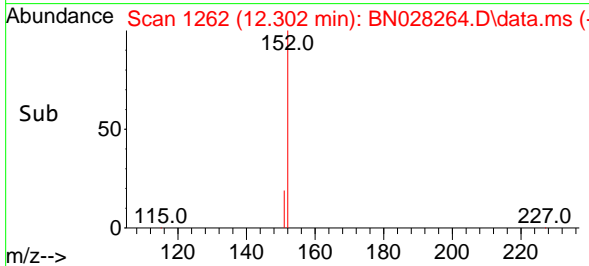
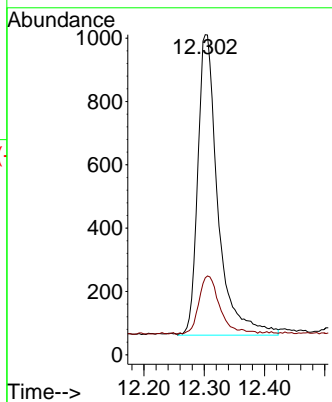
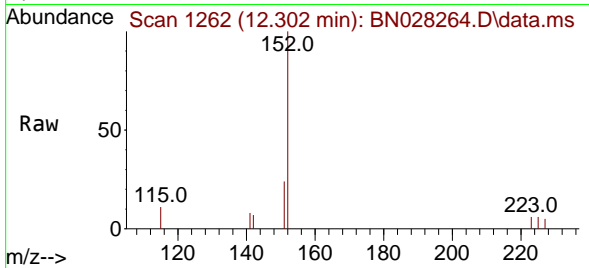




#11
 2-Methylnaphthalene-d10
 Concen: 0.203 ng
 RT: 12.302 min Scan# 11
 Delta R.T. 0.004 min
 Lab File: BN028264.D
 Acq: 12 Oct 2023 17:09

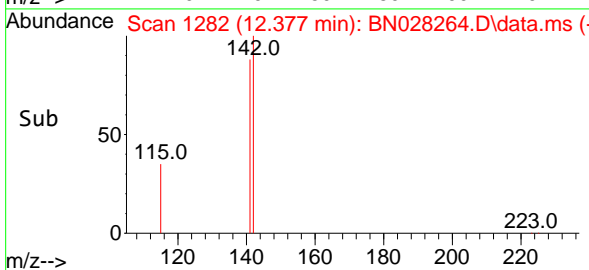
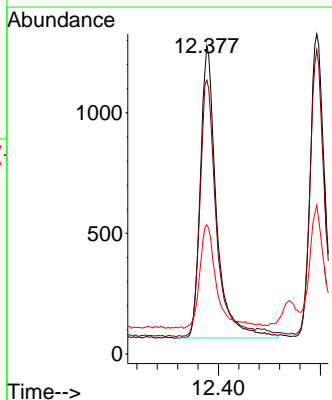
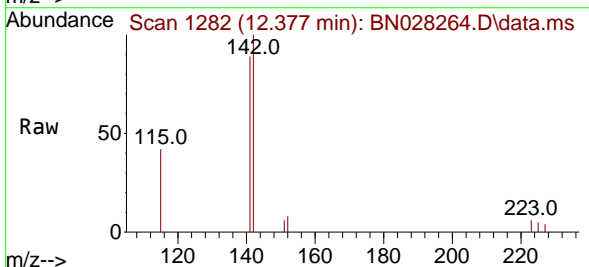
Instrument : BNA_N
 ClientSampleId : SSTDICC0.2

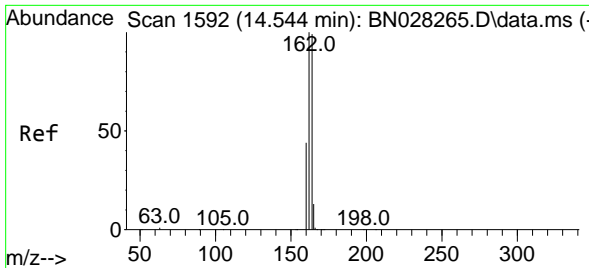
Tgt Ion:152 Resp: 2205
 Ion Ratio Lower Upper
 152 100
 151 19.6 16.1 24.1



#12
 2-Methylnaphthalene
 Concen: 0.199 ng
 RT: 12.377 min Scan# 1282
 Delta R.T. 0.004 min
 Lab File: BN028264.D
 Acq: 12 Oct 2023 17:09

Tgt Ion:142 Resp: 2659
 Ion Ratio Lower Upper
 142 100
 141 89.0 71.1 106.7
 115 42.0 29.9 44.9

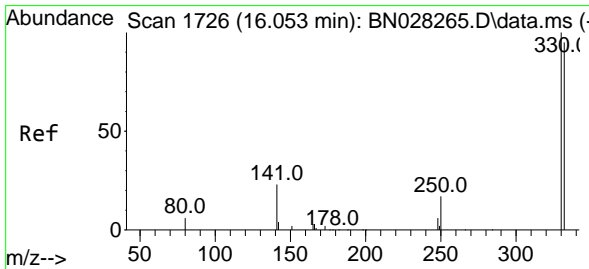
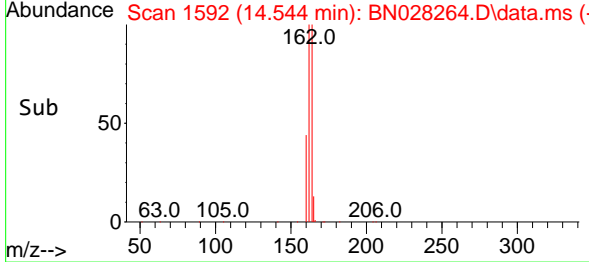
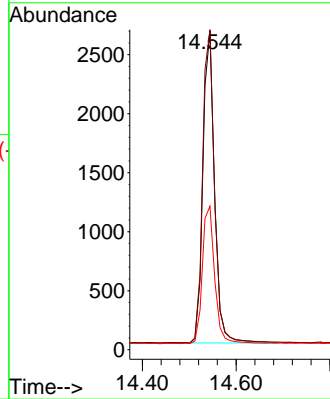
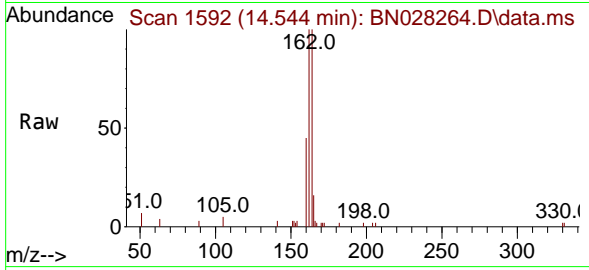




#13
 Acenaphthene-d10
 Concen: 0.400 ng
 RT: 14.544 min Scan# 1111
 Delta R.T. -0.000 min
 Lab File: BN028264.D
 Acq: 12 Oct 2023 17:09

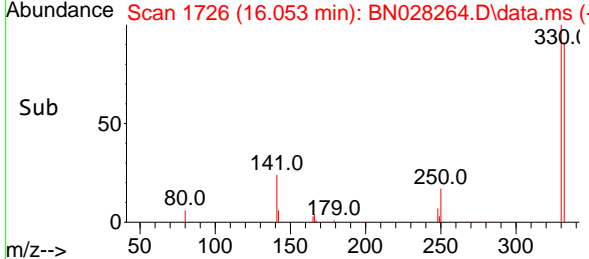
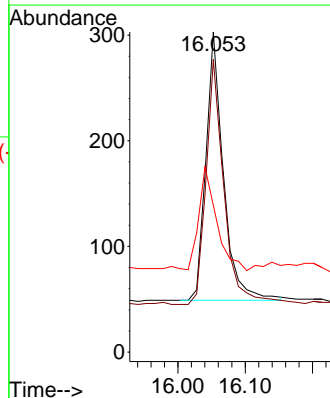
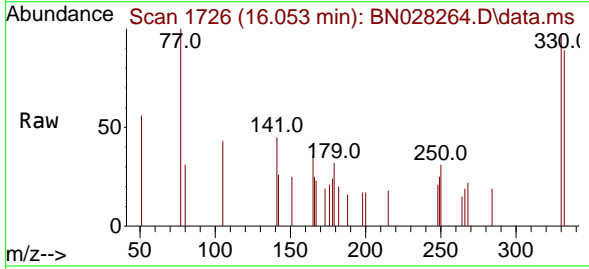
Instrument : BNA_N
 ClientSampleId : SSTDICC0.2

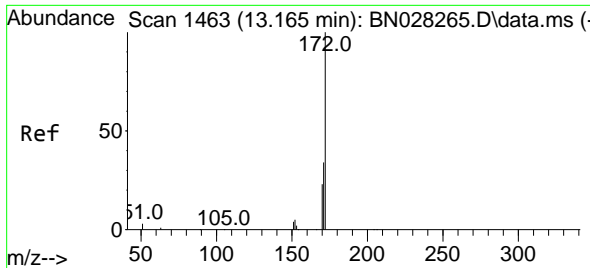
Tgt Ion	Resp	Lower	Upper
164	4545		
162	100	81.1	121.7
160	100.4	36.6	54.8



#14
 2,4,6-Tribromophenol
 Concen: 0.207 ng
 RT: 16.053 min Scan# 1726
 Delta R.T. -0.000 min
 Lab File: BN028264.D
 Acq: 12 Oct 2023 17:09

Tgt Ion	Resp	Lower	Upper
330	459		
332	100	74.1	111.1
141	93.5	32.1	48.1

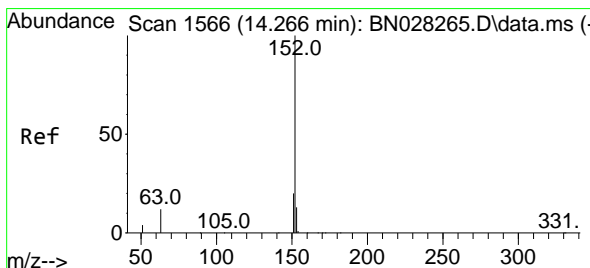
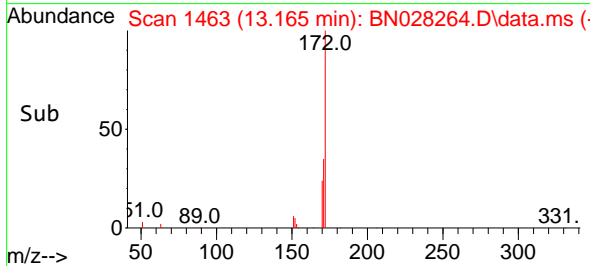
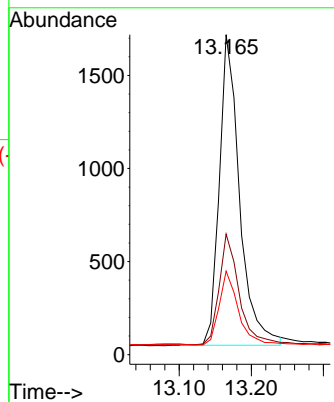
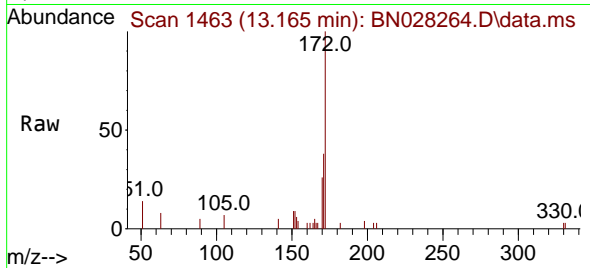




#15
 2-Fluorobiphenyl
 Concen: 0.203 ng
 RT: 13.165 min Scan# 14
 Delta R.T. -0.000 min
 Lab File: BN028264.D
 Acq: 12 Oct 2023 17:09

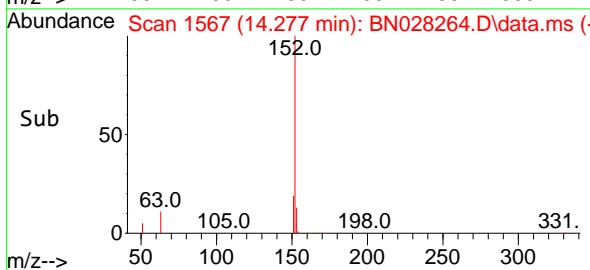
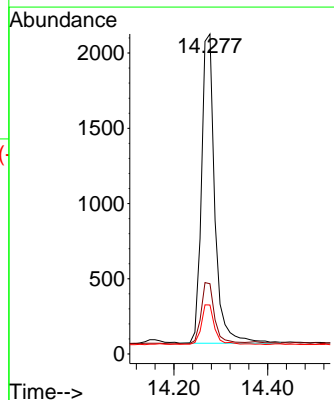
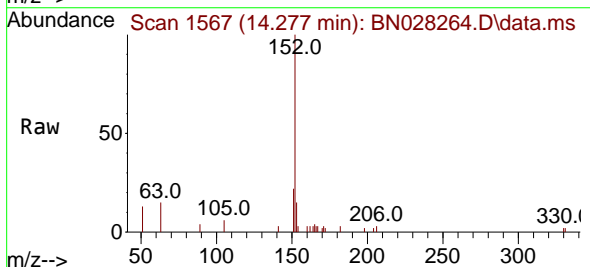
Instrument :
 BNA_N
 ClientSampleId :
 SSTDICC0.2

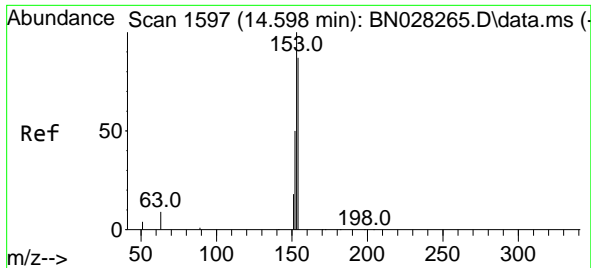
Tgt Ion	Resp	Lower	Upper
172	100		
171	37.7	28.3	42.5
170	26.1	18.7	28.1



#16
 Acenaphthylene
 Concen: 0.199 ng
 RT: 14.277 min Scan# 1567
 Delta R.T. 0.011 min
 Lab File: BN028264.D
 Acq: 12 Oct 2023 17:09

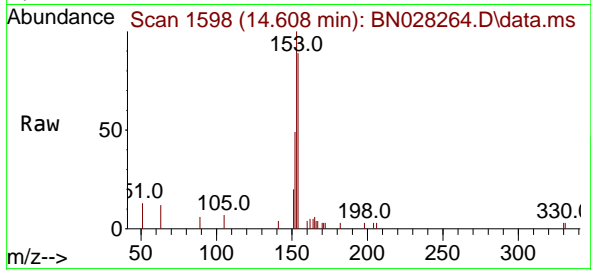
Tgt Ion	Resp	Lower	Upper
152	100		
151	20.3	15.6	23.4
153	12.9	10.6	16.0



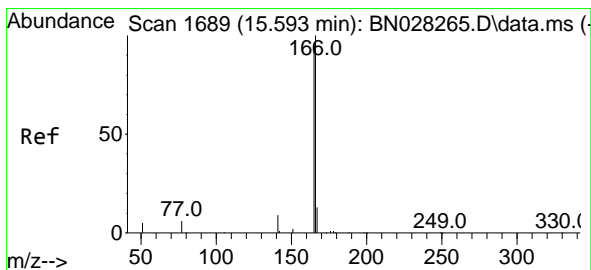
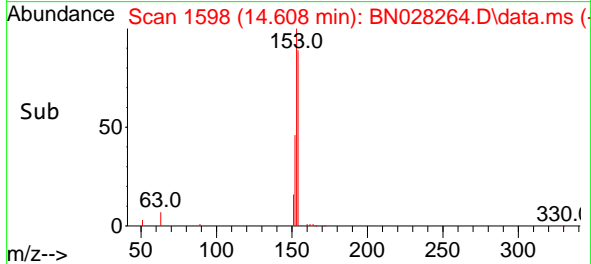
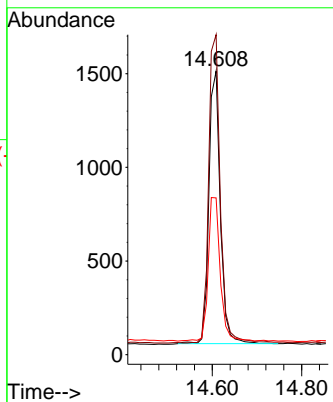


#17
 Acenaphthene
 Concen: 0.200 ng
 RT: 14.608 min Scan# 11
 Delta R.T. 0.011 min
 Lab File: BN028264.D
 Acq: 12 Oct 2023 17:09

Instrument :
 BNA_N
 ClientSampleId :
 SSTDICC0.2

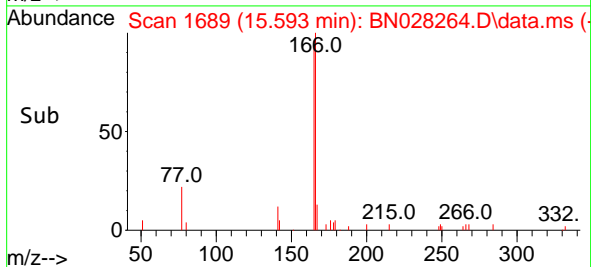
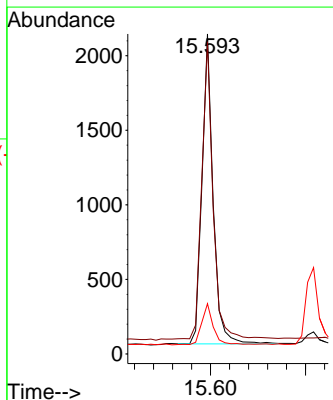
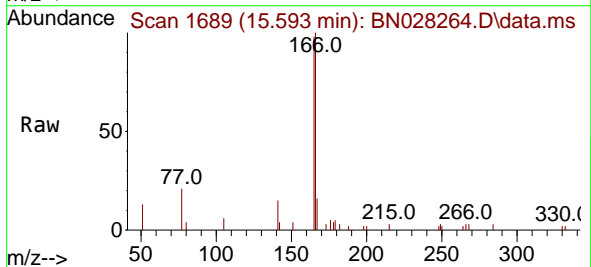


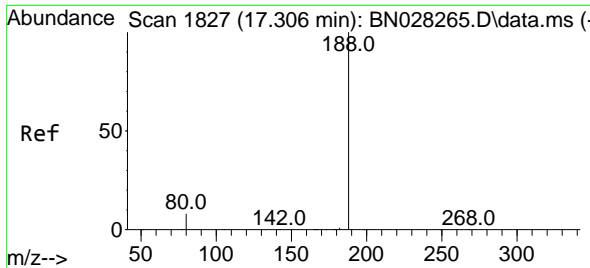
Tgt Ion:154 Resp: 2568
 Ion Ratio Lower Upper
 154 100
 153 115.2 90.7 136.1
 152 55.1 43.6 65.4



#18
 Fluorene
 Concen: 0.200 ng
 RT: 15.593 min Scan# 1689
 Delta R.T. -0.000 min
 Lab File: BN028264.D
 Acq: 12 Oct 2023 17:09

Tgt Ion:166 Resp: 3386
 Ion Ratio Lower Upper
 166 100
 165 98.8 79.3 118.9
 167 13.4 10.9 16.3



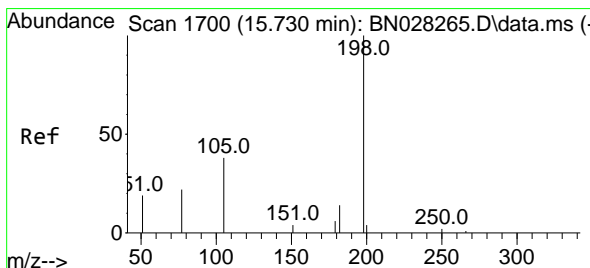
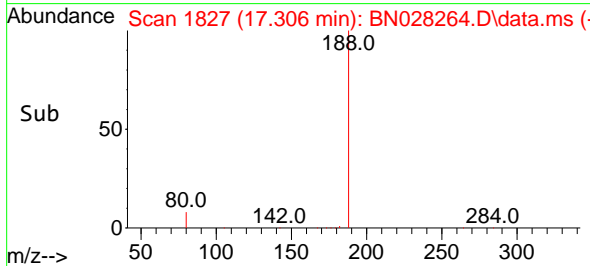
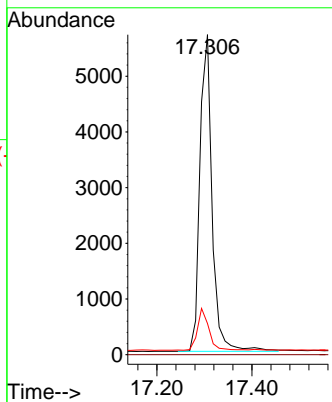
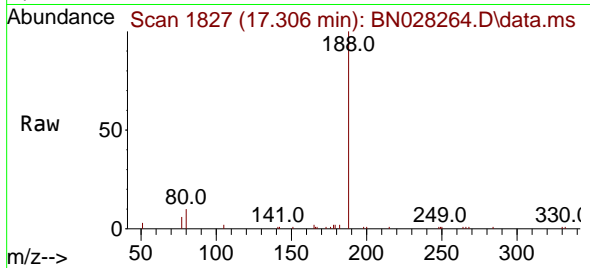


#19
 Phenanthrene-d10
 Concen: 0.400 ng
 RT: 17.306 min Scan# 11
 Delta R.T. -0.000 min
 Lab File: BN028264.D
 Acq: 12 Oct 2023 17:09

Instrument :
 BNA_N
 ClientSampleId :
 SSTDICC0.2

Tgt Ion:188 Resp: 10153

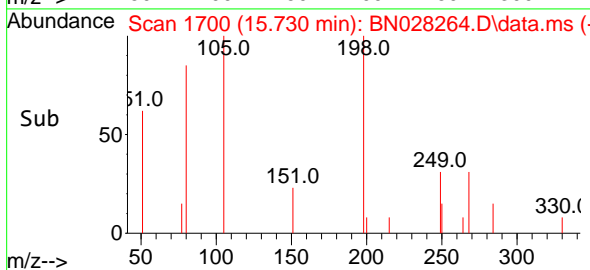
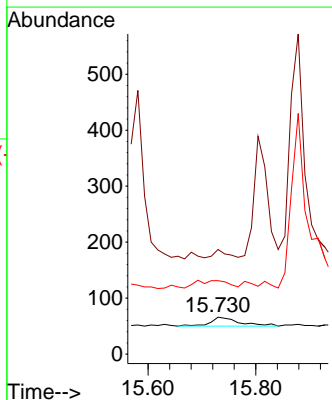
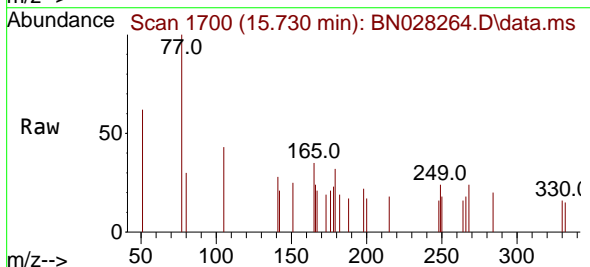
Ion	Ratio	Lower	Upper
188	100		
94	0.0	0.0	0.0
80	9.8	7.1	10.7

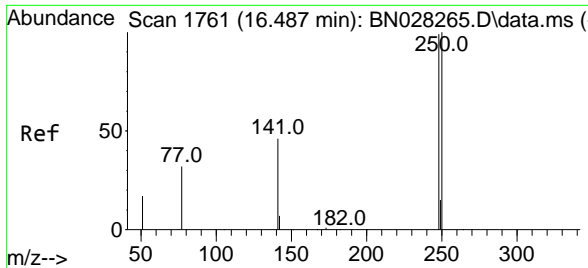


#20
 4,6-Dinitro-2-methylphenol
 Concen: 0.269 ng
 RT: 15.730 min Scan# 1700
 Delta R.T. -0.000 min
 Lab File: BN028264.D
 Acq: 12 Oct 2023 17:09

Tgt Ion:198 Resp: 60

Ion	Ratio	Lower	Upper
198	100		
51	283.3	96.1	144.1#
105	198.5	75.4	113.0#

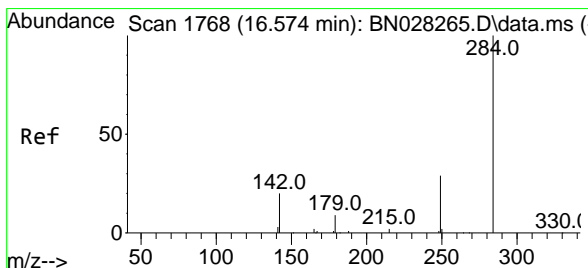
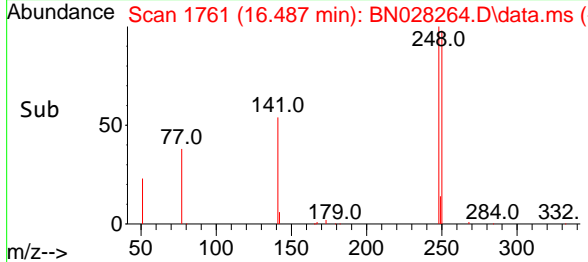
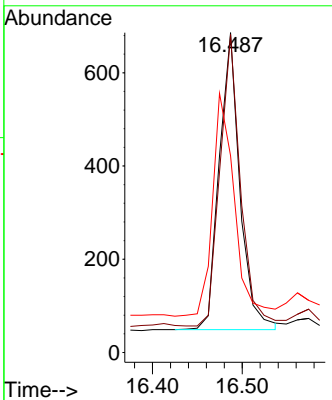
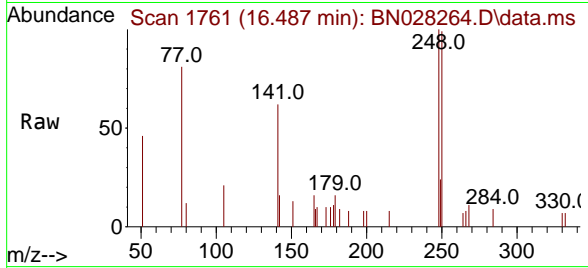




#21
 4-Bromophenyl-phenylether
 Concen: 0.194 ng
 RT: 16.487 min Scan# 1761
 Delta R.T. -0.000 min
 Lab File: BN028264.D
 Acq: 12 Oct 2023 17:09

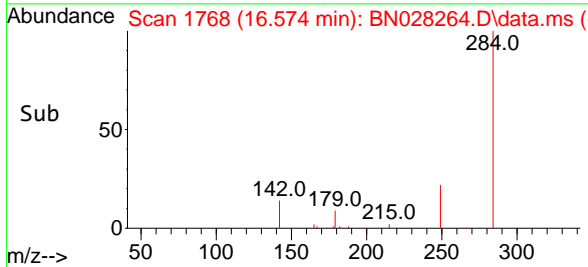
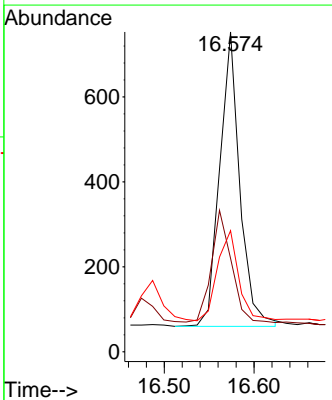
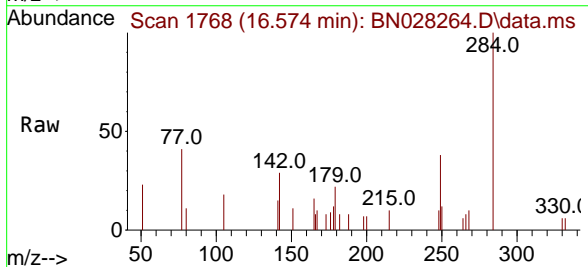
Instrument : BNA_N
 ClientSampleId : SSTDICC0.2

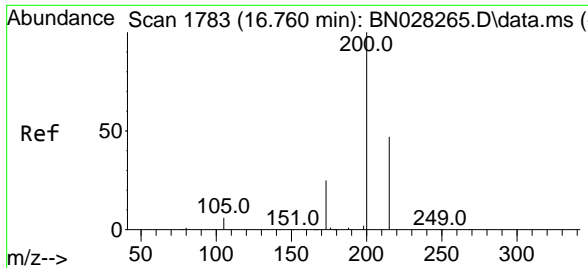
Tgt Ion	Resp	Lower	Upper
248	100		
250	99.4	80.5	120.7
141	61.5	38.9	58.3



#22
 Hexachlorobenzene
 Concen: 0.200 ng
 RT: 16.574 min Scan# 1768
 Delta R.T. -0.000 min
 Lab File: BN028264.D
 Acq: 12 Oct 2023 17:09

Tgt Ion	Resp	Lower	Upper
284	100		
142	37.9	32.1	48.1
249	32.6	25.5	38.3



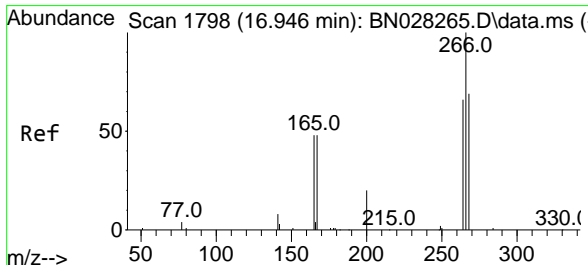
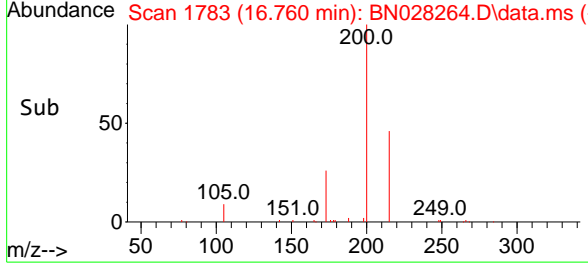
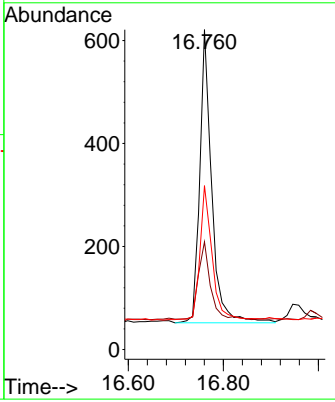
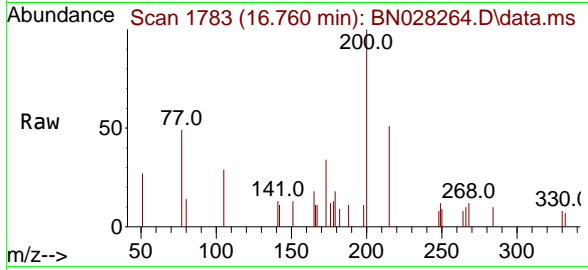


#23
 Atrazine
 Concen: 0.203 ng
 RT: 16.760 min Scan# 1783
 Delta R.T. -0.000 min
 Lab File: BN028264.D
 Acq: 12 Oct 2023 17:09

Instrument : BNA_N
 ClientSampleId : SSTDICC0.2

Tgt Ion:200 Resp: 994

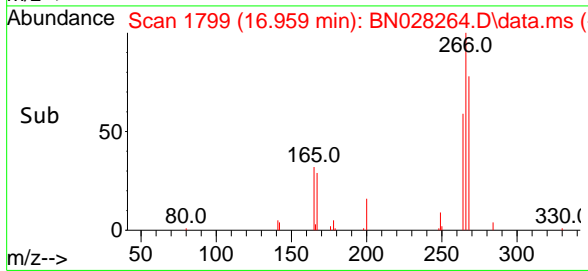
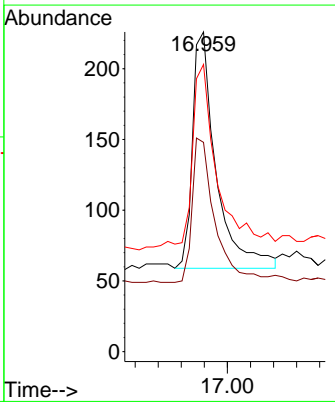
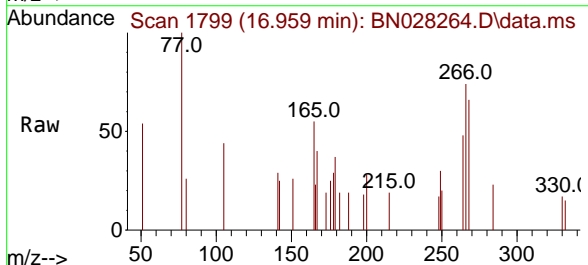
Ion	Ratio	Lower	Upper
200	100		
173	33.7	21.6	32.4#
215	51.2	39.0	58.6

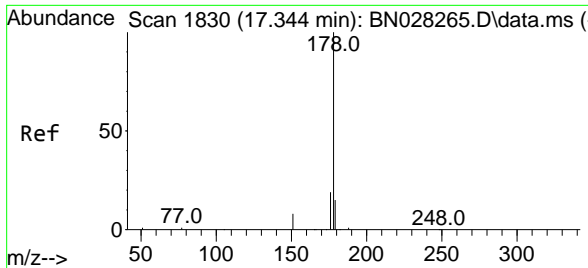


#24
 Pentachlorophenol
 Concen: 0.193 ng
 RT: 16.959 min Scan# 1799
 Delta R.T. 0.012 min
 Lab File: BN028264.D
 Acq: 12 Oct 2023 17:09

Tgt Ion:266 Resp: 474

Ion	Ratio	Lower	Upper
266	100		
264	60.5	51.5	77.3
268	80.6	56.6	84.8



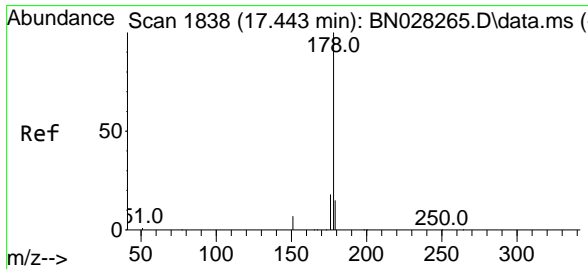
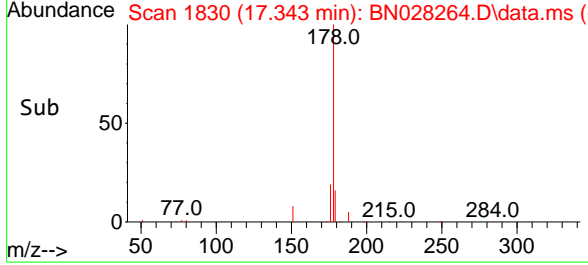
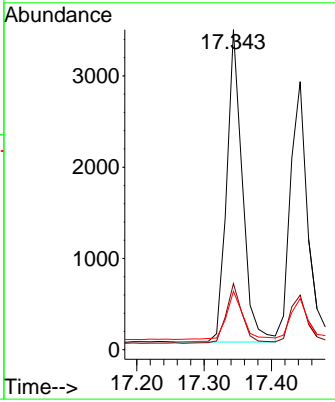
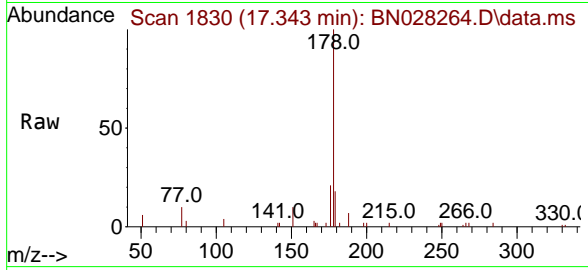


#25
 Phenanthrene
 Concen: 0.199 ng
 RT: 17.343 min Scan# 1830
 Delta R.T. -0.000 min
 Lab File: BN028264.D
 Acq: 12 Oct 2023 17:09

Instrument : BNA_N
 ClientSampleId : SSTDICC0.2

Tgt Ion:178 Resp: 5539

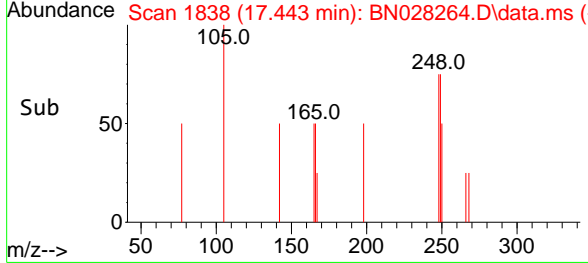
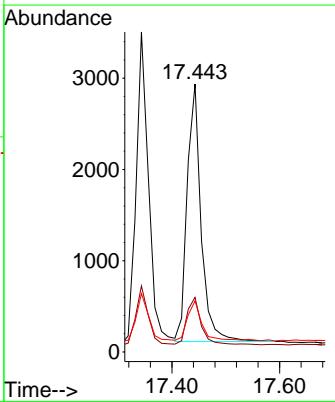
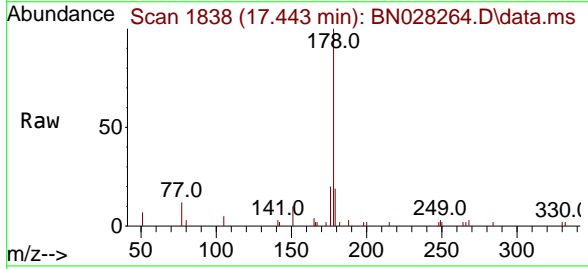
Ion	Ratio	Lower	Upper
178	100		
176	19.5	15.3	22.9
179	16.3	12.5	18.7

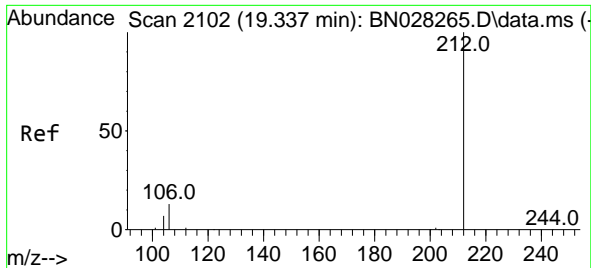


#26
 Anthracene
 Concen: 0.192 ng
 RT: 17.443 min Scan# 1838
 Delta R.T. -0.000 min
 Lab File: BN028264.D
 Acq: 12 Oct 2023 17:09

Tgt Ion:178 Resp: 5095

Ion	Ratio	Lower	Upper
178	100		
176	18.8	14.6	22.0
179	15.8	12.2	18.4

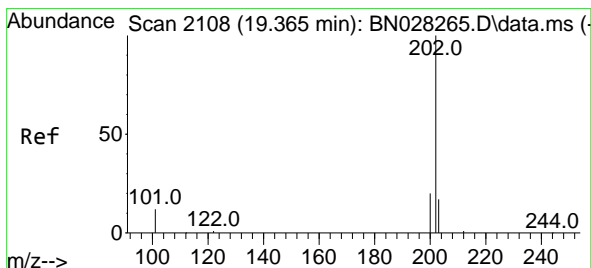
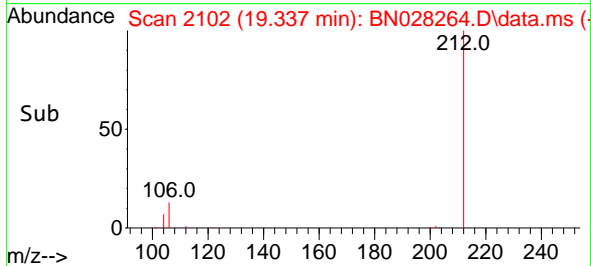
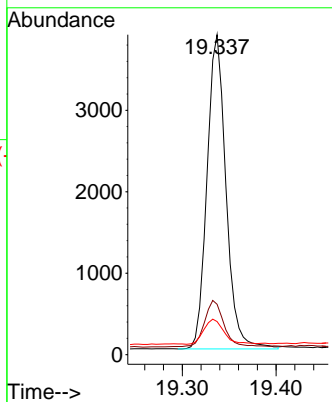
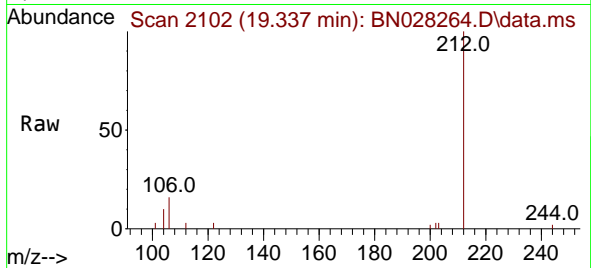




#27
 Fluoranthene-d10
 Concen: 0.200 ng
 RT: 19.337 min Scan# 2102
 Delta R.T. -0.000 min
 Lab File: BN028264.D
 Acq: 12 Oct 2023 17:09

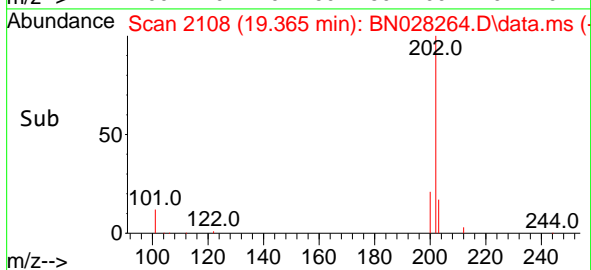
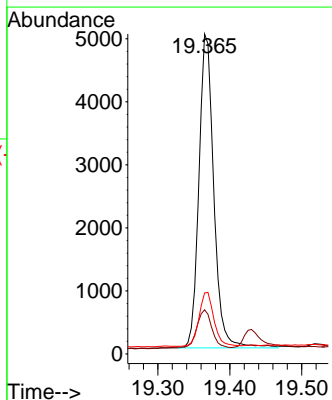
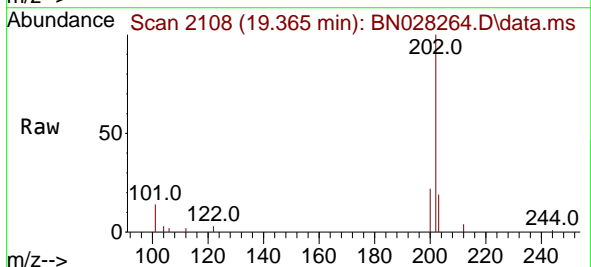
Instrument :
 BNA_N
 ClientSampleId :
 SSTDICC0.2

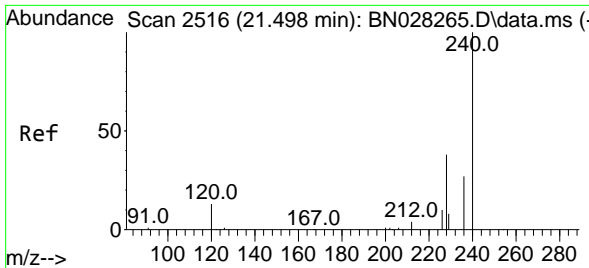
Tgt Ion	Resp	Lower	Upper
212	100		
106	15.5	11.5	17.3
104	8.5	6.7	10.1



#28
 Fluoranthene
 Concen: 0.205 ng
 RT: 19.365 min Scan# 2108
 Delta R.T. -0.000 min
 Lab File: BN028264.D
 Acq: 12 Oct 2023 17:09

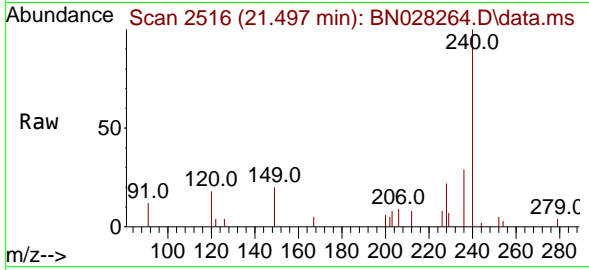
Tgt Ion	Resp	Lower	Upper
202	100		
101	13.2	10.1	15.1
203	17.2	13.9	20.9



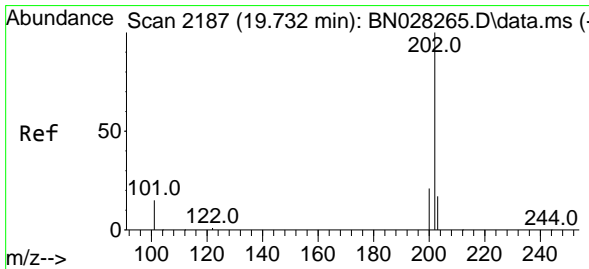
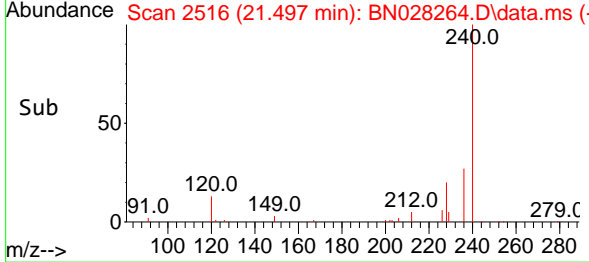
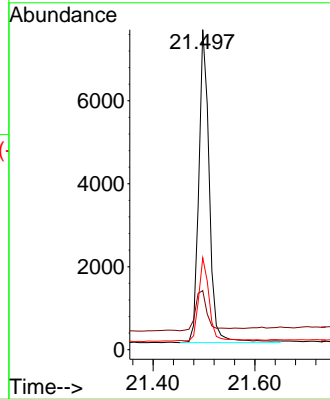


#29
 Chrysene-d12
 Concen: 0.400 ng
 RT: 21.497 min Scan# 21
 Delta R.T. -0.000 min
 Lab File: BN028264.D
 Acq: 12 Oct 2023 17:09

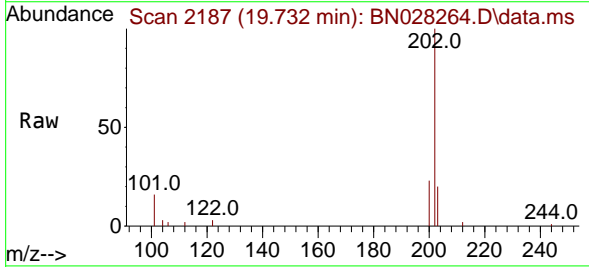
Instrument :
 BNA_N
 ClientSampleId :
 SSTDICC0.2



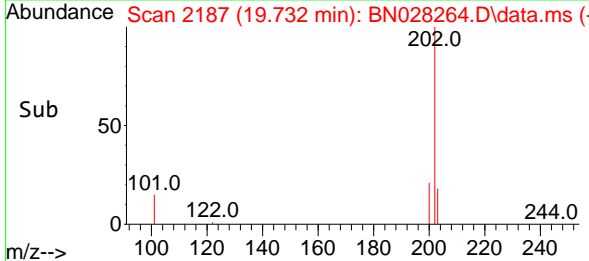
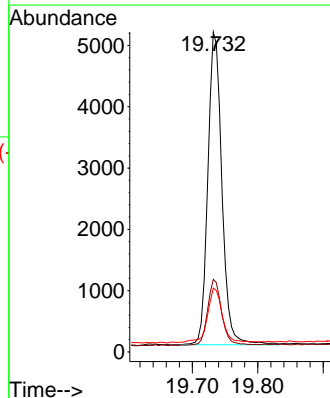
Tgt Ion:240 Resp: 10798
 Ion Ratio Lower Upper
 240 100
 120 18.4 13.4 20.0
 236 28.7 22.7 34.1

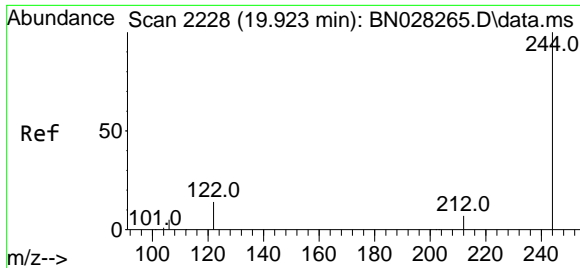


#30
 Pyrene
 Concen: 0.206 ng
 RT: 19.732 min Scan# 2187
 Delta R.T. -0.000 min
 Lab File: BN028264.D
 Acq: 12 Oct 2023 17:09



Tgt Ion:202 Resp: 7607
 Ion Ratio Lower Upper
 202 100
 200 21.6 16.7 25.1
 203 17.9 14.5 21.7

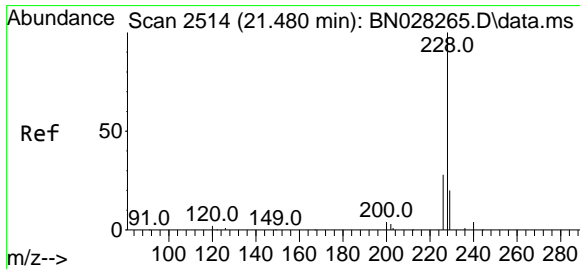
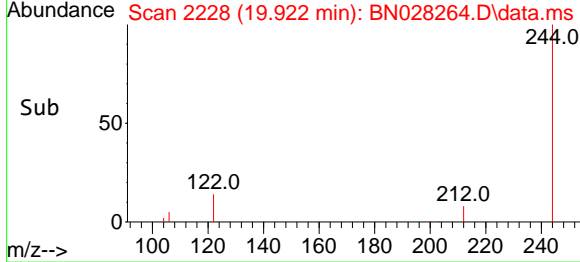
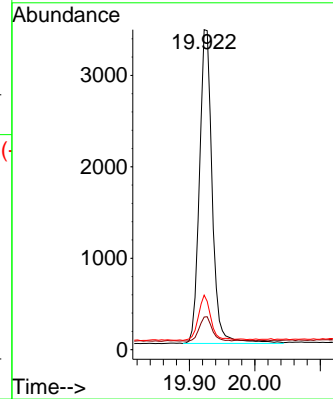
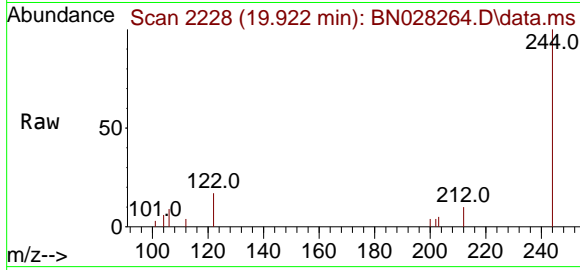




#31
 Terphenyl-d14
 Concen: 0.203 ng
 RT: 19.922 min Scan# 21
 Delta R.T. -0.000 min
 Lab File: BN028264.D
 Acq: 12 Oct 2023 17:09

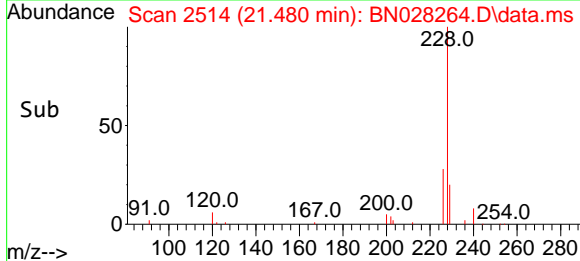
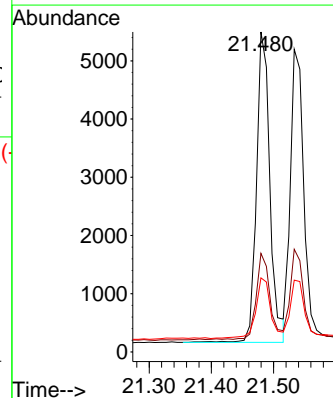
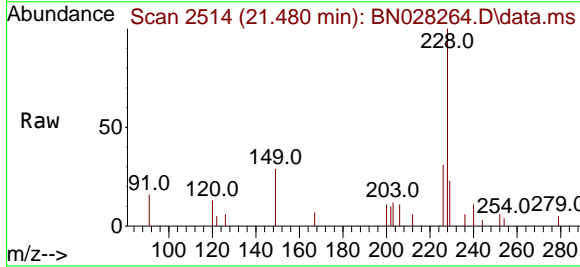
Instrument : BNA_N
 ClientSampleId : SSTDICC0.2

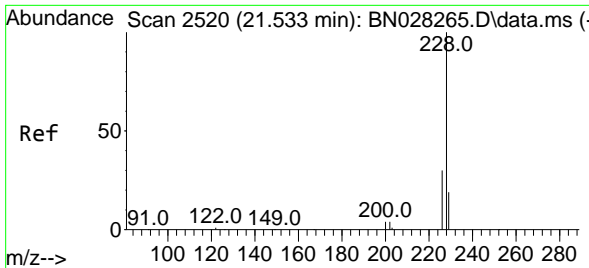
Tgt Ion	Resp	Lower	Upper
244	100		
212	10.2	6.6	10.0#
122	17.1	11.7	17.5



#32
 Benzo(a)anthracene
 Concen: 0.208 ng
 RT: 21.480 min Scan# 2514
 Delta R.T. -0.000 min
 Lab File: BN028264.D
 Acq: 12 Oct 2023 17:09

Tgt Ion	Resp	Lower	Upper
228	100		
226	30.8	22.9	34.3
229	23.1	16.6	24.8

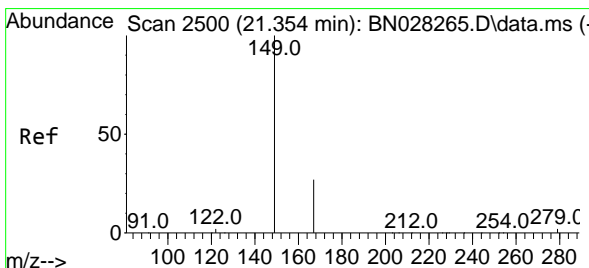
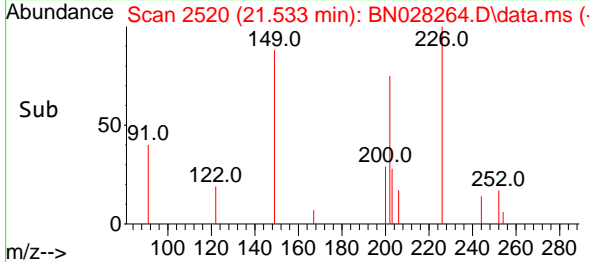
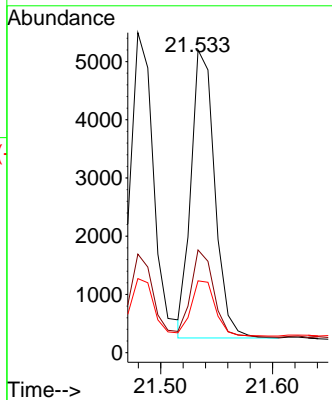
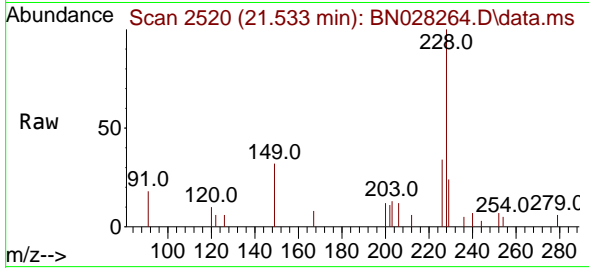




#33
 Chrysene
 Concen: 0.198 ng
 RT: 21.533 min Scan# 21
 Delta R.T. -0.000 min
 Lab File: BN028264.D
 Acq: 12 Oct 2023 17:09

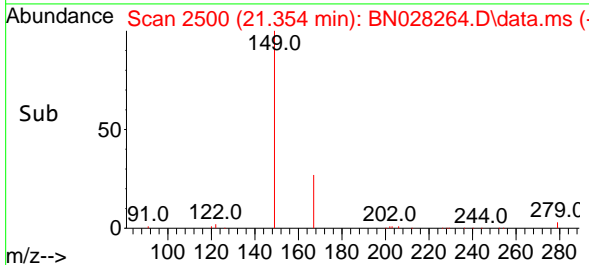
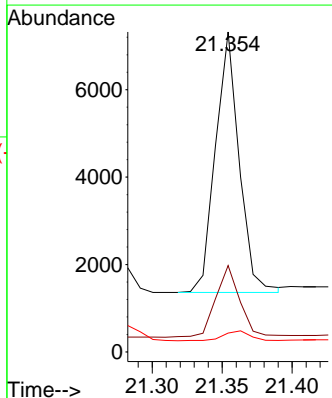
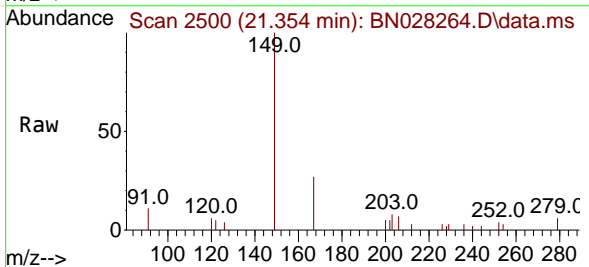
Instrument :
 BNA_N
 ClientSampleId :
 SSTDICC0.2

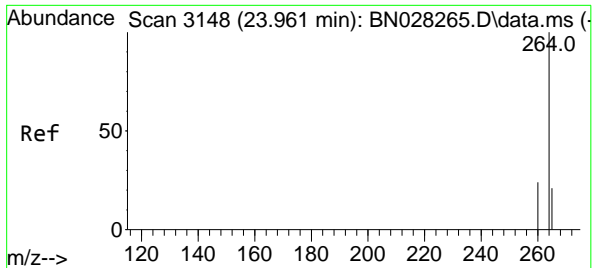
Tgt Ion	Resp	Lower	Upper
228	100		
226	33.9	25.2	37.8
229	23.7	16.6	25.0



#34
 Bis(2-ethylhexyl)phthalate
 Concen: 0.239 ng
 RT: 21.354 min Scan# 2500
 Delta R.T. 0.000 min
 Lab File: BN028264.D
 Acq: 12 Oct 2023 17:09

Tgt Ion	Resp	Lower	Upper
149	100		
167	28.5	22.6	34.0
279	4.3	4.2	6.2



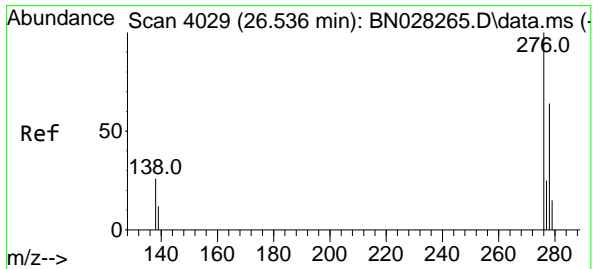
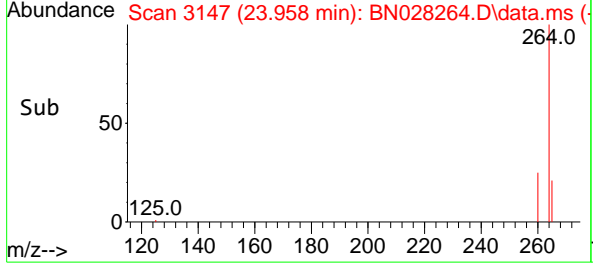
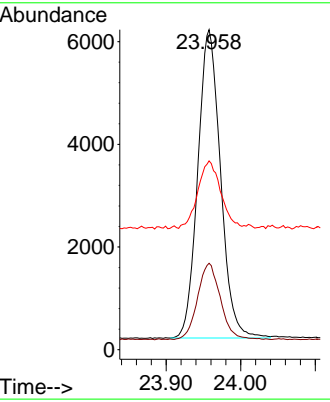
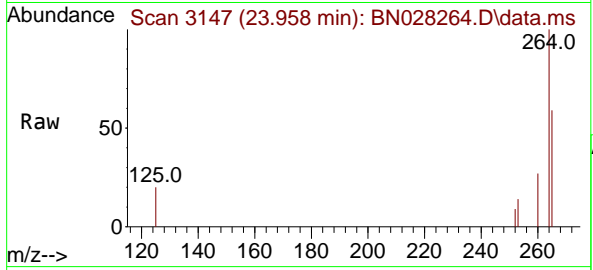


#35
 Perylene-d12
 Concen: 0.400 ng
 RT: 23.958 min Scan# 3147
 Delta R.T. -0.003 min
 Lab File: BN028264.D
 Acq: 12 Oct 2023 17:09

Instrument : BNA_N
 ClientSampleId : SSTDICC0.2

Tgt Ion:264 Resp: 12724

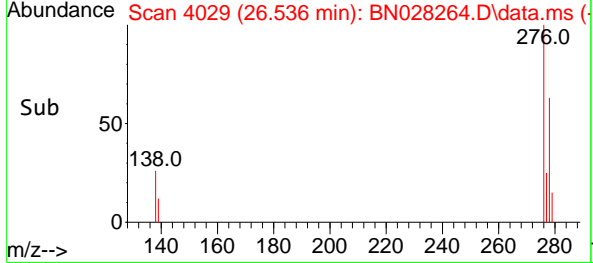
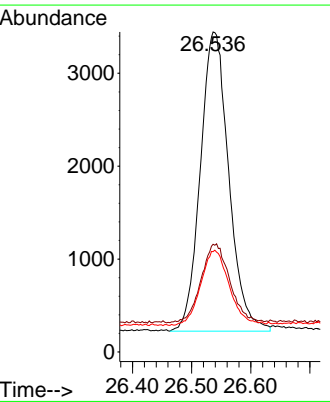
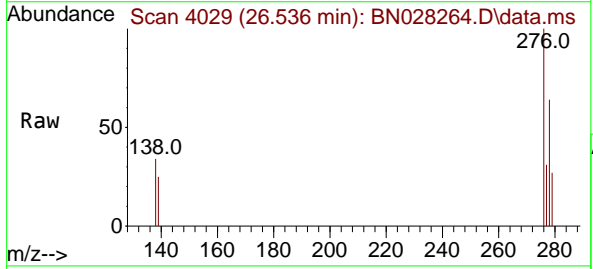
Ion	Ratio	Lower	Upper
264	100		
260	27.0	20.7	31.1
265	59.0	38.3	57.5

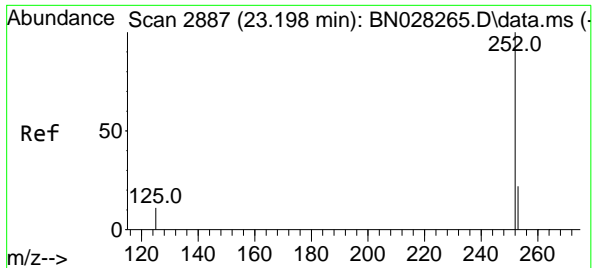


#36
 Indeno(1,2,3-cd)pyrene
 Concen: 0.210 ng
 RT: 26.536 min Scan# 4029
 Delta R.T. -0.000 min
 Lab File: BN028264.D
 Acq: 12 Oct 2023 17:09

Tgt Ion:276 Resp: 10748

Ion	Ratio	Lower	Upper
276	100		
138	26.7	21.3	31.9
277	25.0	20.0	30.0

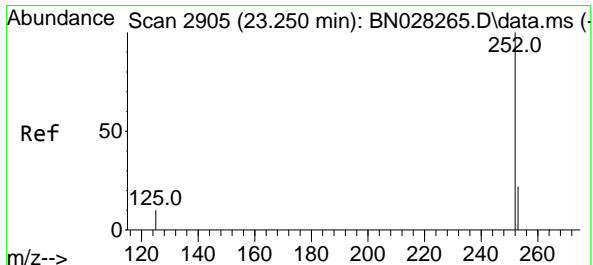
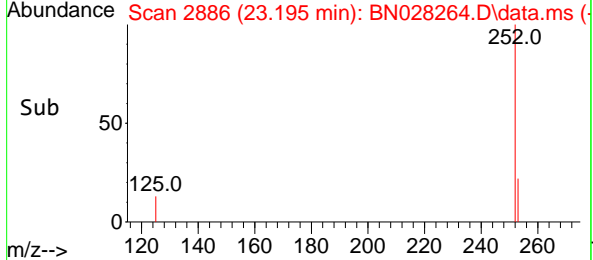
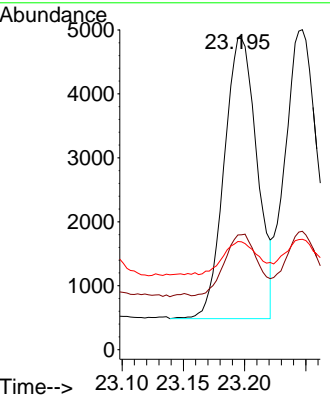
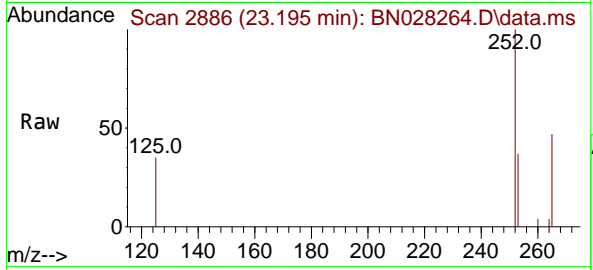




#37
 Benzo(b)fluoranthene
 Concen: 0.207 ng
 RT: 23.195 min Scan# 21
 Delta R.T. -0.003 min
 Lab File: BN028264.D
 Acq: 12 Oct 2023 17:09

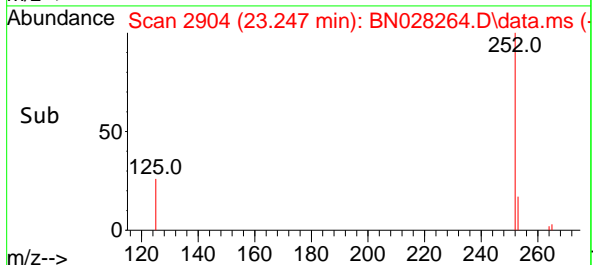
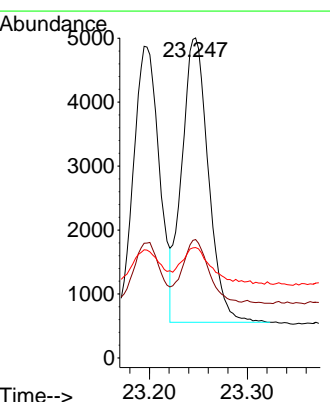
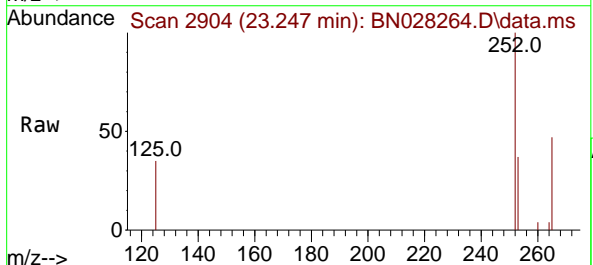
Instrument : BNA_N
 ClientSampleId : SSTDICC0.2

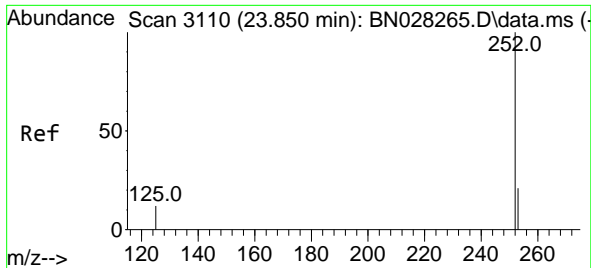
Tgt Ion	Resp	Lower	Upper
252	100		
253	36.8	21.8	32.8#
125	34.7	15.6	23.4#



#38
 Benzo(k)fluoranthene
 Concen: 0.207 ng
 RT: 23.247 min Scan# 2904
 Delta R.T. -0.003 min
 Lab File: BN028264.D
 Acq: 12 Oct 2023 17:09

Tgt Ion	Resp	Lower	Upper
252	100		
253	37.0	22.0	33.0#
125	34.5	15.3	22.9#



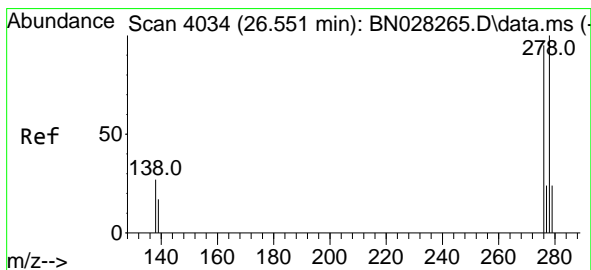
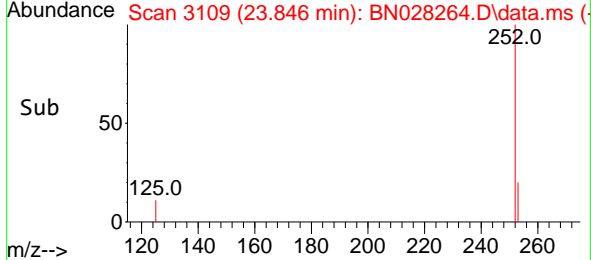
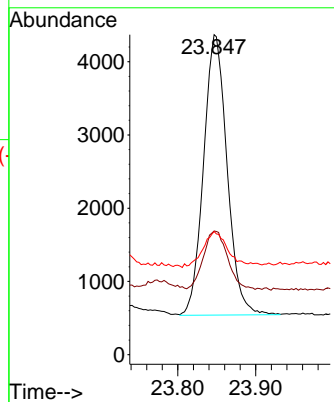
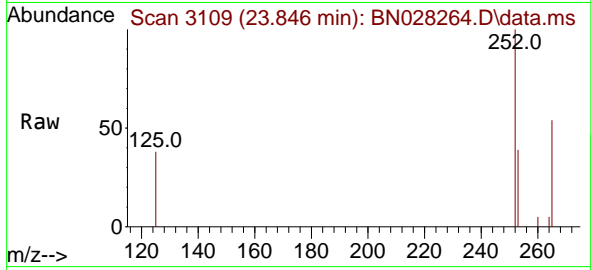


#39
 Benzo(a)pyrene
 Concen: 0.203 ng
 RT: 23.846 min Scan# 3110
 Delta R.T. -0.003 min
 Lab File: BN028264.D
 Acq: 12 Oct 2023 17:09

Instrument : BNA_N
 ClientSampleId : SSTDICC0.2

Tgt Ion:252 Resp: 8035

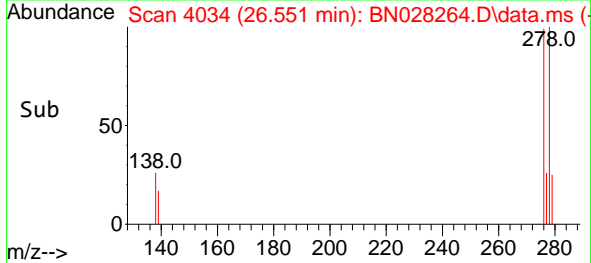
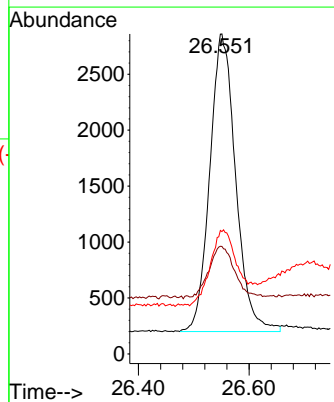
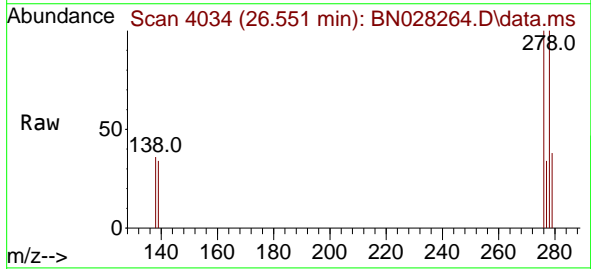
Ion	Ratio	Lower	Upper
252	100		
253	38.7	22.7	34.1#
125	38.5	17.0	25.6#

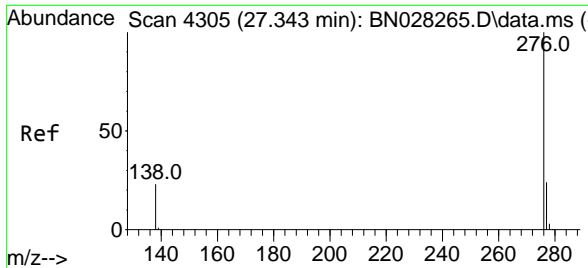


#40
 Dibenzo(a,h)anthracene
 Concen: 0.208 ng
 RT: 26.551 min Scan# 4034
 Delta R.T. -0.000 min
 Lab File: BN028264.D
 Acq: 12 Oct 2023 17:09

Tgt Ion:278 Resp: 8650

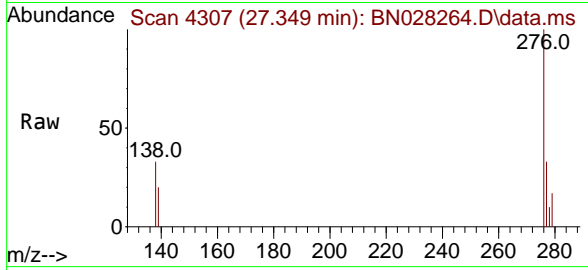
Ion	Ratio	Lower	Upper
278	100		
139	33.6	18.8	28.2#
279	38.3	23.5	35.3#





#41
 Benzo(g,h,i)perylene
 Concen: 0.208 ng
 RT: 27.349 min Scan# 41
 Delta R.T. 0.006 min
 Lab File: BN028264.D
 Acq: 12 Oct 2023 17:09

Instrument :
 BNA_N
 ClientSampleId :
 SSTDICC0.2



Tgt Ion: 276 Resp: 8965

Ion	Ratio	Lower	Upper
276	100		
277	32.8	21.7	32.5#
138	33.1	21.7	32.5#

