

Data Path : Z:\SVOASRV\HPCHEM1\BNA\_N\DATA\BN101320\  
 Data File : BN012186.D  
 Acq On : 14 Oct 2020 07:29  
 Operator : CG/JU  
 Sample : L4360-02  
 Misc :  
 ALS Vial : 34 Sample Multiplier: 1

Instrument :  
 BNA\_N  
 ClientSampleId :  
 CB7W2

Integration Parameters: LSCINT.P

Integrator: RTE  
 Smoothing : OFF  
 Sampling : 1  
 Start Thrs: 0.2  
 Stop Thrs : 0

Filtering: 5  
 Min Area: 0.1 % of largest Peak  
 Max Peaks: 100  
 Peak Location: TOP

If leading or trailing edge < 100 prefer < Baseline drop else tangent >  
 Peak separation: 5

Method : Z:\SVOASRV\HPCHEM1\BNA\_N\METHODS\SOM-EPA-BN100920.M  
 Title : SVOA CALIBRATION

Signal : TIC

peak #	R.T. min	first scan	max scan	last scan	PK TY	peak height	corr. area	corr. % max.	% of total
1	3.169	28	31	33	rBV	86577	99563	1.61%	0.127%
2	3.199	33	36	46	rVB	204783	292167	4.74%	0.372%
3	3.434	73	76	78	rBV4	10226	11974	0.19%	0.015%
4	3.881	148	152	157	rBV	19450	28619	0.46%	0.036%
5	4.316	220	226	236	rVB	171742	268023	4.35%	0.342%
6	4.987	332	340	344	rBV6	16149	24100	0.39%	0.031%
7	5.246	380	384	390	rVB	28523	41769	0.68%	0.053%
8	5.593	439	443	449	rVB7	17390	28392	0.46%	0.036%
9	5.752	466	470	475	rBV5	12792	18976	0.31%	0.024%
10	5.934	497	501	505	rVB5	9977	17546	0.28%	0.022%
11	6.810	644	650	660	rBV2	300503	583492	9.46%	0.744%
12	6.969	671	677	684	rBV	723991	1092485	17.71%	1.392%
13	7.163	703	710	717	rBV	917184	1405137	22.78%	1.790%
14	7.246	719	724	736	rVB	142976	253735	4.11%	0.323%
15	7.628	782	789	797	rBV	1192355	1814720	29.42%	2.312%
16	7.699	797	801	813	rVB4	52224	125041	2.03%	0.159%
17	7.993	847	851	855	rBV	50939	79930	1.30%	0.102%
18	8.052	857	861	866	rVB3	24821	35641	0.58%	0.045%
19	8.181	876	883	885	rBV7	6196	13610	0.22%	0.017%
20	8.334	903	909	919	rVV	770610	1220740	19.79%	1.556%
21	8.410	919	922	928	rVV8	16646	30194	0.49%	0.038%
22	8.534	941	943	946	rVV4	9648	11981	0.19%	0.015%
23	8.604	950	955	964	rBV	84092	144760	2.35%	0.184%
24	8.722	970	975	978	rBV2	27074	41582	0.67%	0.053%
25	8.775	978	984	993	rVB	915918	1460399	23.68%	1.861%
26	8.899	1002	1005	1009	rVB5	15540	17951	0.29%	0.023%
27	8.981	1017	1019	1023	rVB5	8967	11800	0.19%	0.015%
28	9.134	1038	1045	1051	rBV5	58280	97017	1.57%	0.124%
29	9.222	1051	1060	1068	rVB4	38921	105457	1.71%	0.134%
30	9.322	1072	1077	1079	rBV6	7424	11596	0.19%	0.015%
31	9.363	1079	1084	1087	rBV5	19289	27481	0.45%	0.035%
32	9.416	1090	1093	1099	rVB7	13710	25806	0.42%	0.033%
33	9.493	1099	1106	1119	rBV	800331	1318922	21.38%	1.681%
34	9.628	1126	1129	1133	rVB5	16805	23294	0.38%	0.030%

Data Path : Z:\SVOASRV\HPCHEM1\BNA\_N\DATA\BN101320\  
 Data File : BN012186.D  
 Acq On : 14 Oct 2020 07:29  
 Operator : CG/JU  
 Sample : L4360-02  
 Misc :  
 ALS Vial : 34 Sample Multiplier: 1

Instrument :  
 BNA\_N  
 ClientSampleId :  
 CB7W2

## Integration Parameters: LSCINT.P

Integrator: RTE  
 Smoothing : OFF  
 Sampling : 1  
 Start Thrs: 0.2  
 Stop Thrs : 0

Filtering: 5  
 Min Area: 0.1 % of largest Peak  
 Max Peaks: 100  
 Peak Location: TOP

If leading or trailing edge < 100 prefer < Baseline drop else tangent >  
 Peak separation: 5

Method : Z:\SVOASRV\HPCHEM1\BNA\_N\METHODS\SOM-EPA-BN100920.M  
 Title : SVOA CALIBRATION

35	9.822	1151	1162	1169	rVB7	63937	134717	2.18%	0.172%
36	9.934	1169	1181	1184	rBV7	25294	74474	1.21%	0.095%
37	10.028	1190	1197	1206	rBV	1286501	2176543	35.29%	2.773%
38	10.198	1218	1226	1239	rBV	26370	82097	1.33%	0.105%
39	10.398	1253	1260	1268	rVB	1531282	2571153	41.69%	3.276%
40	10.540	1278	1284	1295	rBV	1066159	1840237	29.84%	2.345%
41	10.610	1295	1296	1300	rVB4	16021	14741	0.24%	0.019%
42	10.663	1301	1305	1311	rBV9	18289	30024	0.49%	0.038%
43	10.763	1318	1322	1325	rVB6	9886	13616	0.22%	0.017%
44	10.822	1328	1332	1333	rBV4	10819	13138	0.21%	0.017%
45	10.957	1350	1355	1359	rBV8	24653	46583	0.76%	0.059%
46	11.057	1369	1372	1375	rVB4	16462	19468	0.32%	0.025%
47	11.110	1377	1381	1385	rBV4	36643	59543	0.97%	0.076%
48	11.145	1385	1387	1393	rVV2	32178	47886	0.78%	0.061%
49	11.240	1393	1403	1409	rVB7	34553	96374	1.56%	0.123%
50	11.304	1411	1414	1415	rBV3	10292	12163	0.20%	0.015%
51	11.381	1420	1427	1431	rBV8	17840	37479	0.61%	0.048%
52	11.581	1455	1461	1462	rBV5	12765	20557	0.33%	0.026%
53	11.610	1462	1466	1472	rVB7	32555	53219	0.86%	0.068%
54	11.669	1472	1476	1479	rVB5	12903	19057	0.31%	0.024%
55	11.757	1483	1491	1495	rBV	89606	177286	2.87%	0.226%
56	11.910	1513	1517	1522	rBV7	35964	65017	1.05%	0.083%
57	11.987	1527	1530	1533	rBV4	21615	32028	0.52%	0.041%
58	12.028	1533	1537	1539	rBV5	21804	32383	0.53%	0.041%
59	12.187	1560	1564	1567	rBV6	16297	30809	0.50%	0.039%
60	12.357	1589	1593	1598	rVB7	28285	49675	0.81%	0.063%
61	12.522	1615	1621	1625	rBV8	17682	37466	0.61%	0.048%
62	12.622	1631	1638	1641	rBV8	28229	66131	1.07%	0.084%
63	13.069	1711	1714	1718	rBV5	23857	36507	0.59%	0.047%
64	13.116	1718	1722	1726	rVV2	87017	131159	2.13%	0.167%
65	13.175	1726	1732	1738	rVV	372694	592765	9.61%	0.755%
66	13.316	1753	1756	1760	rVB5	24608	30569	0.50%	0.039%
67	13.451	1777	1779	1783	rBV5	18329	19519	0.32%	0.025%
68	13.492	1783	1786	1791	rBV5	37561	64689	1.05%	0.082%
69	13.628	1806	1809	1811	rBV4	23481	32785	0.53%	0.042%
70	13.687	1813	1819	1823	rVV	2329644	3232460	52.41%	4.119%
71	13.728	1823	1826	1835	rVB	830665	1161699	18.83%	1.480%

Data Path : Z:\SVOASRV\HPCHEM1\BNA\_N\DATA\BN101320\  
 Data File : BN012186.D  
 Acq On : 14 Oct 2020 07:29  
 Operator : CG/JU  
 Sample : L4360-02  
 Misc :  
 ALS Vial : 34 Sample Multiplier: 1

Instrument :  
 BNA\_N  
 ClientSampleId :  
 CB7W2

## Integration Parameters: LSCINT.P

Integrator: RTE  
 Smoothing : OFF  
 Sampling : 1  
 Start Thrs: 0.2  
 Stop Thrs : 0

Filtering: 5  
 Min Area: 0.1 % of largest Peak  
 Max Peaks: 100  
 Peak Location: TOP

If leading or trailing edge < 100 prefer < Baseline drop else tangent >  
 Peak separation: 5

Method : Z:\SVOASRV\HPCHEM1\BNA\_N\METHODS\SOM-EPA-BN100920.M  
 Title : SVOA CALIBRATION

72	13.957	1857	1865	1873	rBV	2516055	3796260	61.55%	4.837%
73	14.086	1882	1887	1897	rBV	179783	311808	5.06%	0.397%
74	14.198	1901	1906	1910	rVV4	130120	193321	3.13%	0.246%
75	14.269	1912	1918	1925	rVB	2405952	3458207	56.07%	4.407%
76	14.334	1925	1929	1933	rBV3	46755	70282	1.14%	0.090%
77	14.486	1950	1955	1961	rBV	199703	365456	5.93%	0.466%
78	15.028	2042	2047	2053	rBV	393349	594877	9.64%	0.758%
79	15.269	2082	2088	2093	rBV	3166796	4450123	72.15%	5.671%
80	15.386	2103	2108	2114	rBV	708848	1014771	16.45%	1.293%
81	15.510	2125	2129	2136	rVB2	108252	179818	2.92%	0.229%
82	15.786	2171	2176	2181	rBV	912066	1209951	19.62%	1.542%
83	15.945	2200	2203	2208	rBV5	42620	63491	1.03%	0.081%
84	16.122	2230	2233	2237	rVB3	43942	52665	0.85%	0.067%
85	16.298	2258	2263	2269	rBV	501111	652753	10.58%	0.832%
86	16.351	2269	2272	2278	rVB6	41993	64067	1.04%	0.082%
87	16.575	2306	2310	2317	rBV	67605	119524	1.94%	0.152%
88	17.016	2380	2385	2395	rVB	2844921	3932769	63.76%	5.011%
89	17.116	2396	2402	2410	rBV	3777880	5086208	82.46%	6.481%
90	17.933	2536	2541	2551	rBV	1367173	1913157	31.02%	2.438%
91	18.222	2586	2590	2595	rBV2	135997	184258	2.99%	0.235%
92	19.222	2756	2760	2768	rBV	356383	521159	8.45%	0.664%
93	19.422	2788	2794	2799	rBV	4409332	5892094	95.53%	7.508%
94	19.474	2799	2803	2810	rVB	976066	1242629	20.15%	1.583%
95	20.939	3048	3052	3061	rBV	2599618	3260284	52.86%	4.154%
96	21.221	3095	3100	3106	rBV	3515544	4394387	71.24%	5.599%
97	21.386	3126	3128	3131	rVB2	192908	164500	2.67%	0.210%
98	23.280	3444	3450	3462	rVB	3228566	6168015	100.00%	7.860%
99	23.415	3468	3473	3480	rVB	2442942	4262638	69.11%	5.432%
100	24.027	3573	3577	3588	rVB3	471370	918910	14.90%	1.171%

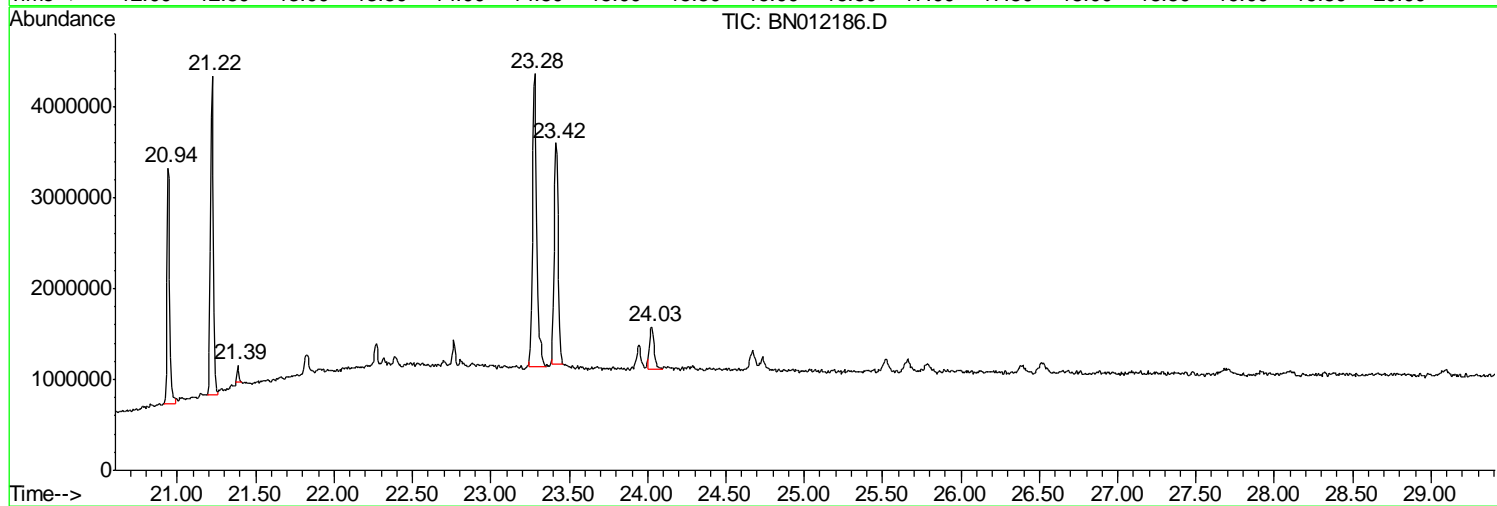
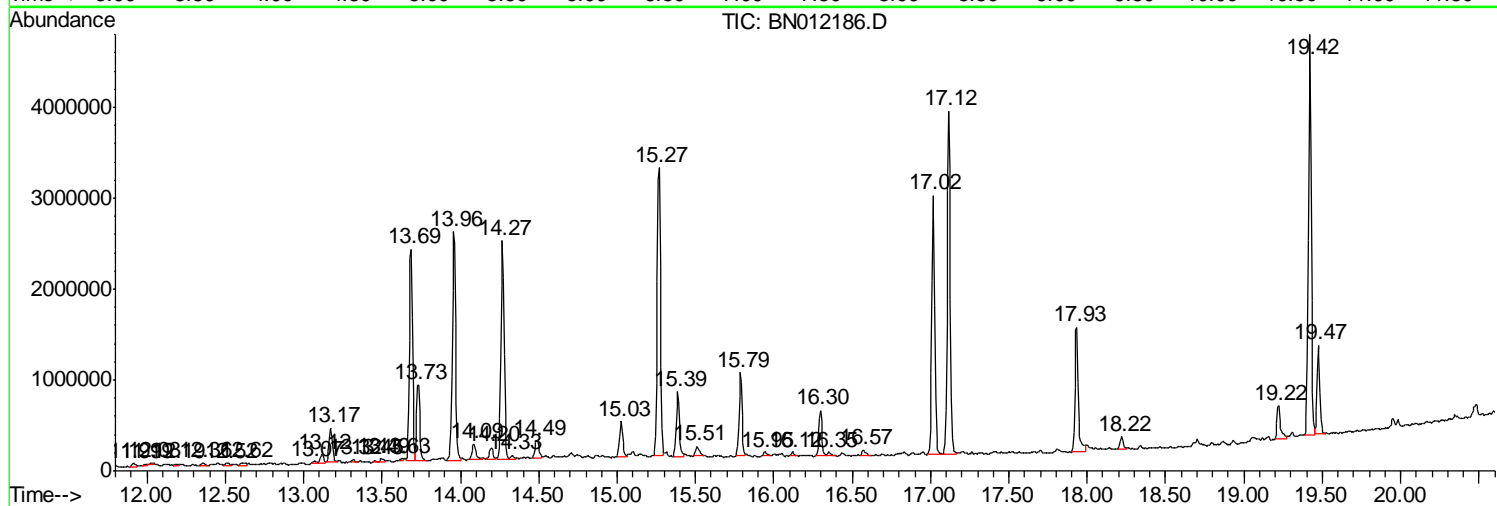
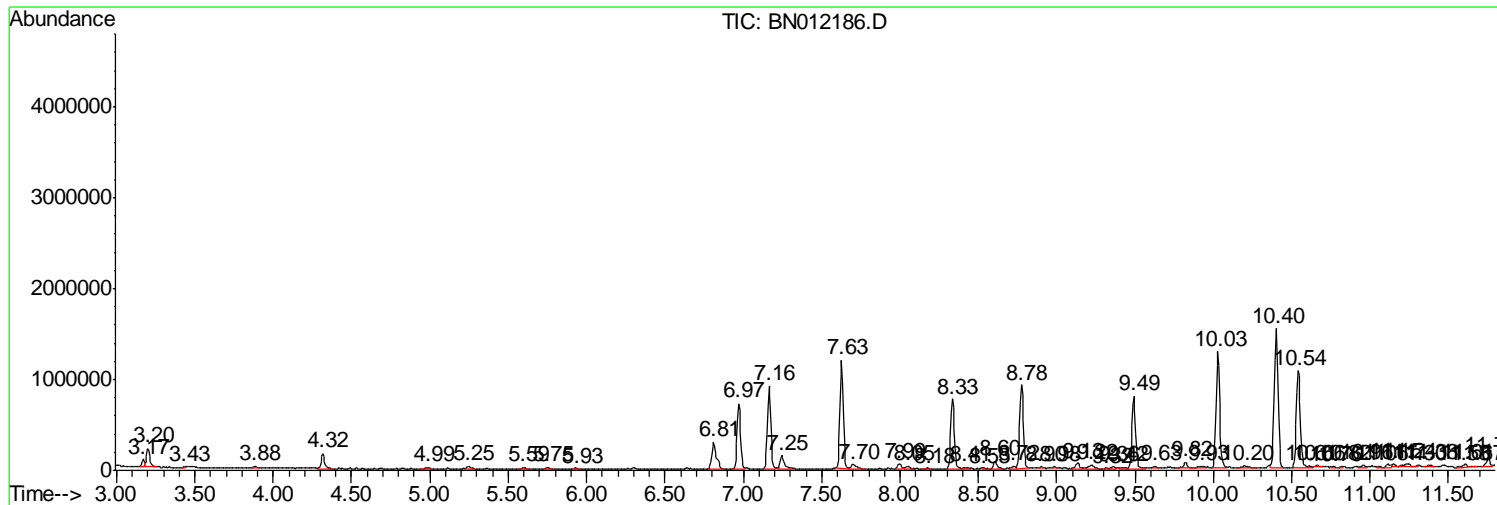
Sum of corrected areas: 78478298

Data Path : Z:\SVOASRV\HPCHEM1\BNA N\DATA\BN101320\  
 Data File : BN012186.D  
 Acq On : 14 Oct 2020 07:29  
 Operator : CG/JU  
 Sample : L4360-02  
 Misc :  
 ALS Vial : 34 Sample Multiplier: 1

Instrument :  
 BNA\_N  
 ClientSampleId :  
 CB7W2

Quant Method : Z:\SVOASRV\HPCHEM1\BNA\_N\METHODS\SOM-EPA-BN100920.M  
 Quant Title : SVOA CALIBRATION

TIC Library : C:\DATABASE\NIST11.L  
 TIC Integration Parameters: LSCINT.P



Data Path : Z:\SVOASRV\HPCHEM1\BNA N\DATA\BN101320\  
 Data File : BN012186.D  
 Acq On : 14 Oct 2020 07:29  
 Operator : CG/JU  
 Sample : L4360-02  
 Misc :  
 ALS Vial : 34 Sample Multiplier: 1

Instrument :  
 BNA\_N  
 ClientSampled :  
 CB7W2

Quant Method : Z:\SVOASRV\HPCHEM1\BNA\_N\METHODS\SOM-EPA-BN100920.M  
 Quant Title : SVOA CALIBRATION

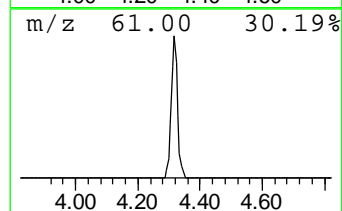
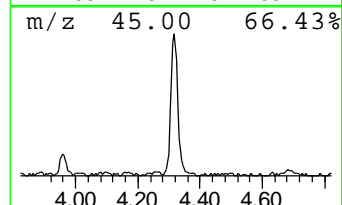
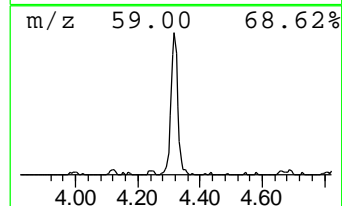
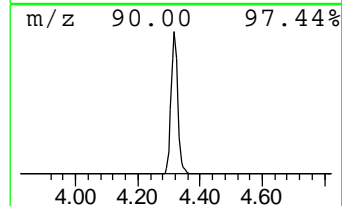
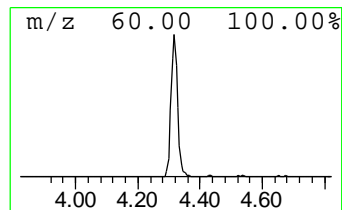
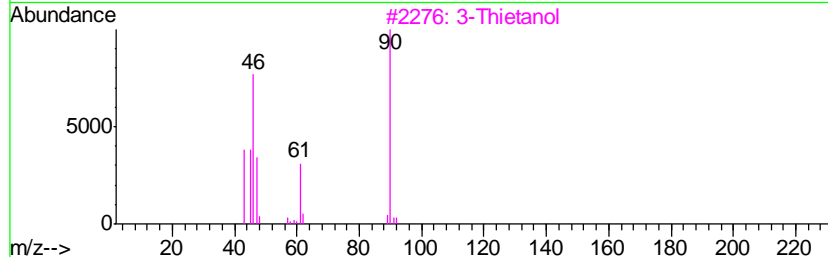
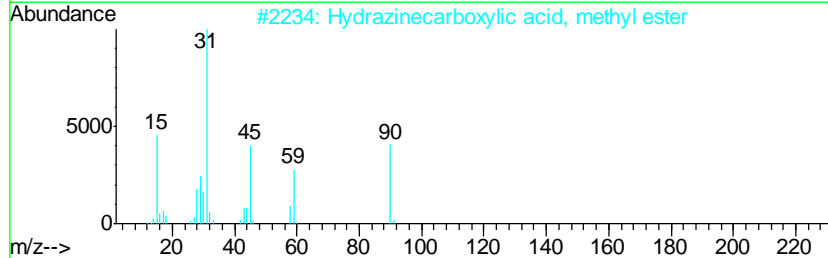
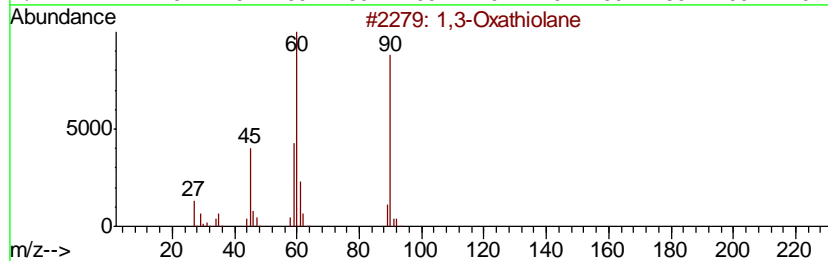
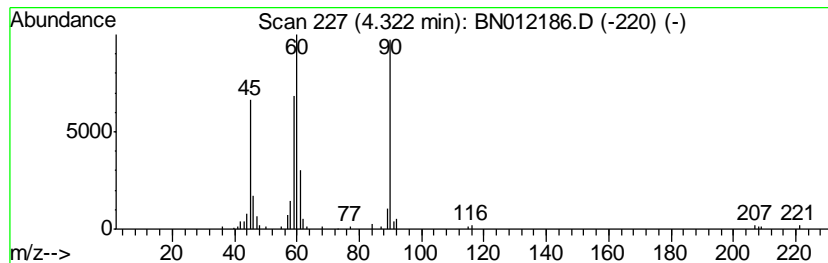
TIC Library : C:\DATABASE\NIST11.L  
 TIC Integration Parameters: LSCINT.P

\*\*\*\*\*  
 Peak Number 1 1,3-Oxathiolane Concentration Rank 9

R.T.	EstConc	Area	Relative to ISTD	R.T.
4.32	2.95 ng/ul	268023	1,4-Dichlorobenzene-d4	7.63

Hit#	of	Tentative ID	MW	MolForm	CAS#	Qual
1	5	1,3-Oxathiolane	90	C3H6OS	002094-97-5	91
2		Hydrazinecarboxylic acid, methyl...	90	C2H6N2O2	006294-89-9	59
3		3-Thietanol	90	C3H6OS	010304-16-2	53
4		Thiourea, methyl-	90	C2H6N2S	000598-52-7	50
5		Acrolein, 2-chloro-	90	C3H3ClO	000683-51-2	45



Data Path : Z:\SVOASRV\HPCHEM1\BNA N\DATA\BN101320\  
 Data File : BN012186.D  
 Acq On : 14 Oct 2020 07:29  
 Operator : CG/JU  
 Sample : L4360-02  
 Misc :  
 ALS Vial : 34 Sample Multiplier: 1

Instrument :  
 BNA\_N  
 ClientSampled :  
 CB7W2

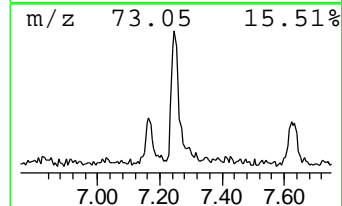
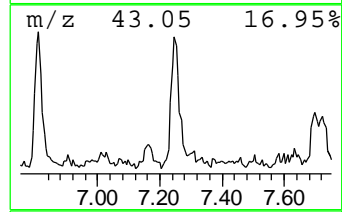
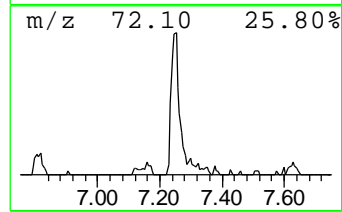
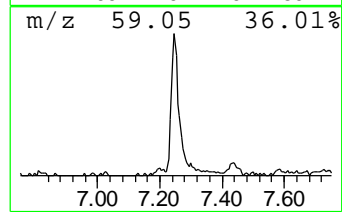
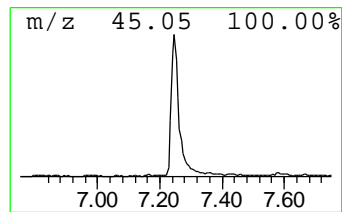
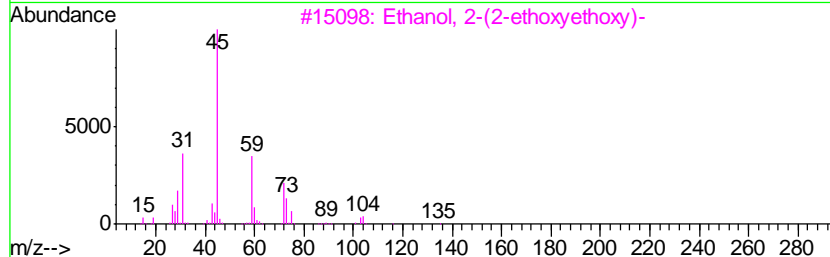
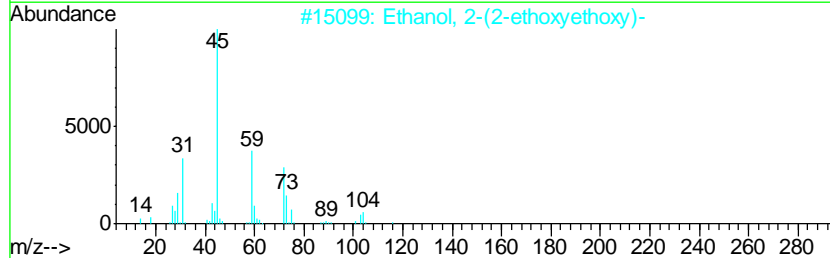
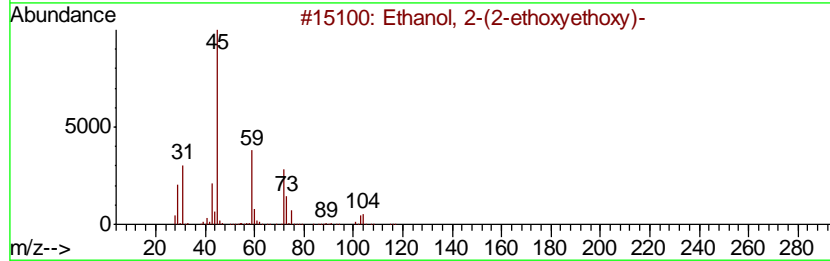
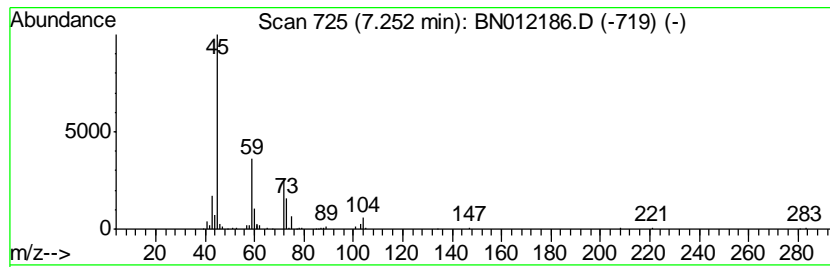
Quant Method : Z:\SVOASRV\HPCHEM1\BNA\_N\METHODS\SOM-EPA-BN100920.M  
 Quant Title : SVOA CALIBRATION

TIC Library : C:\DATABASE\NIST11.L  
 TIC Integration Parameters: LSCINT.P

\*\*\*\*\*  
 Peak Number 2 Ethanol, 2-(2-ethoxyethoxy)- Concentration Rank 10

R.T.	EstConc	Area	Relative to ISTD	R.T.
7.25	2.80 ng/ul	253735	1,4-Dichlorobenzene-d4	7.63

Hit#	of	Tentative ID	MW	MolForm	CAS#	Qual
1	5	Ethanol, 2-(2-ethoxyethoxy)-	134	C6H14O3	000111-90-0	90
2		Ethanol, 2-(2-ethoxyethoxy)-	134	C6H14O3	000111-90-0	90
3		Ethanol, 2-(2-ethoxyethoxy)-	134	C6H14O3	000111-90-0	83
4		Diethyl carbitol	162	C8H18O3	000112-36-7	72
5		Ethanol, 2-(2-ethoxyethoxy)-	134	C6H14O3	000111-90-0	53



Data Path : Z:\SVOASRV\HPCHEM1\BNA N\DATA\BN101320\  
 Data File : BN012186.D  
 Acq On : 14 Oct 2020 07:29  
 Operator : CG/JU  
 Sample : L4360-02  
 Misc :  
 ALS Vial : 34 Sample Multiplier: 1

Instrument :  
 BNA\_N  
 ClientSampled :  
 CB7W2

Quant Method : Z:\SVOASRV\HPCHEM1\BNA\_N\METHODS\SOM-EPA-BN100920.M  
 Quant Title : SVOA CALIBRATION

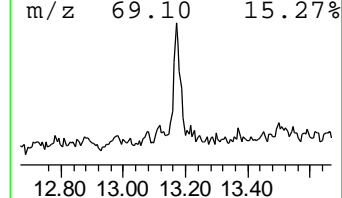
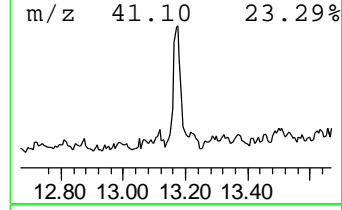
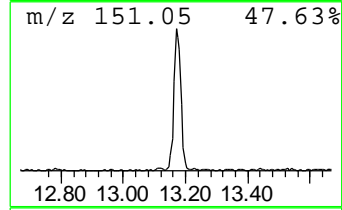
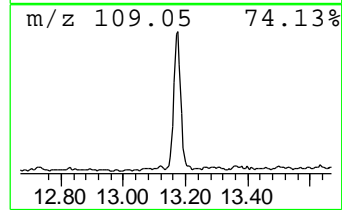
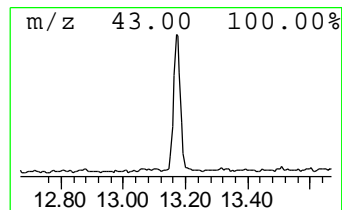
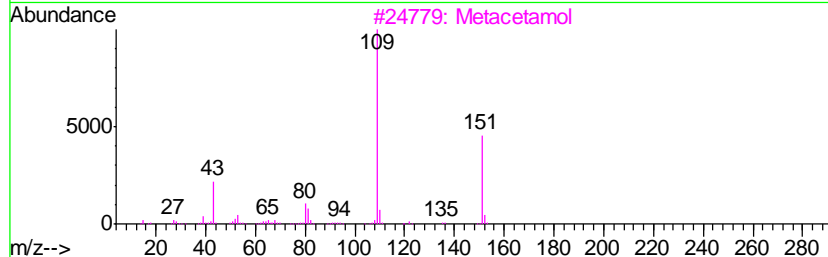
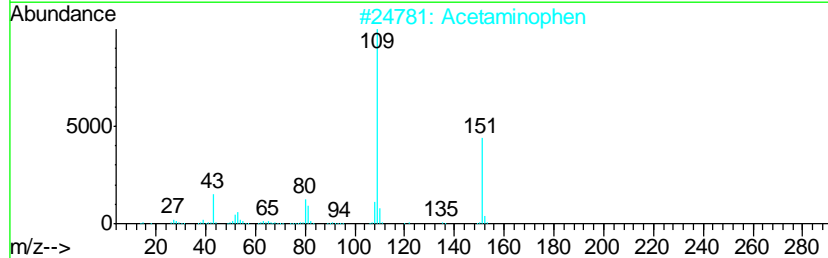
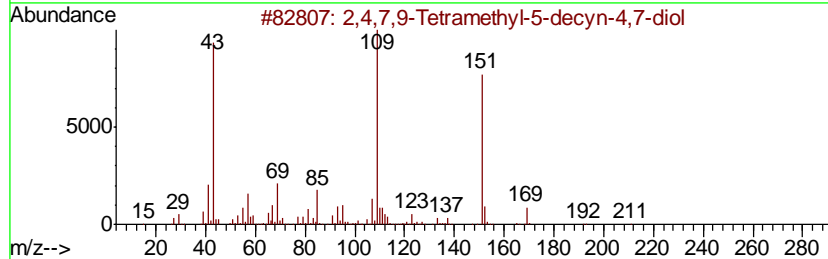
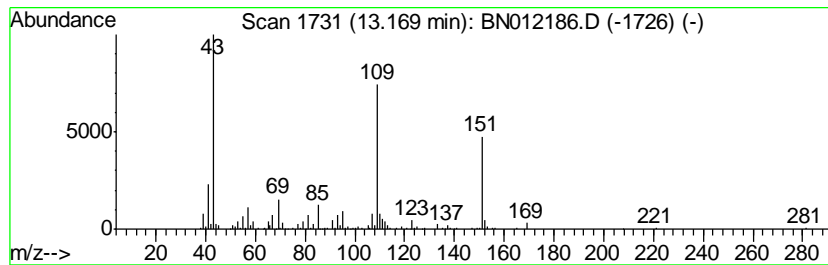
TIC Library : C:\DATABASE\NIST11.L  
 TIC Integration Parameters: LSCINT.P

\*\*\*\*\*  
 Peak Number 3 2,4,7,9-Tetramethyl-5-decyn... Concentration Rank 7

R.T.	EstConc	Area	Relative to ISTD	R.T.
13.17	3.43 ng/ul	592765	Acenaphthene-d10	14.27

Hit#	of	Tentative ID	MW	MolForm	CAS#	Qual
1	5	2,4,7,9-Tetramethyl-5-decyn-4,7-...	226	C14H26O2	000126-86-3	91
2		Acetaminophen	151	C8H9NO2	000103-90-2	64
3		Metacetamol	151	C8H9NO2	000621-42-1	59
4		Butanamide, N-acetyl-N-(4-hydrox...	221	C12H15NO3	1000107-08-7	45
5		2-Propenal, 3-(2,2,6-trimethyl-7...	194	C12H18O2	055759-91-6	40



Data Path : Z:\SVOASRV\HPCHEM1\BNA N\DATA\BN101320\  
 Data File : BN012186.D  
 Acq On : 14 Oct 2020 07:29  
 Operator : CG/JU  
 Sample : L4360-02  
 Misc :  
 ALS Vial : 34 Sample Multiplier: 1

Instrument :  
 BNA\_N  
 ClientSampled :  
 CB7W2

Quant Method : Z:\SVOASRV\HPCHEM1\BNA\_N\METHODS\SOM-EPA-BN100920.M  
 Quant Title : SVOA CALIBRATION

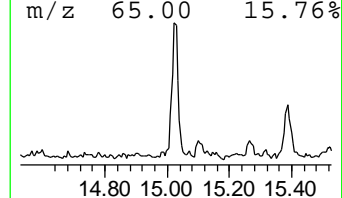
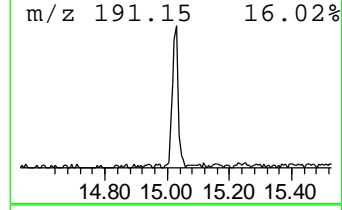
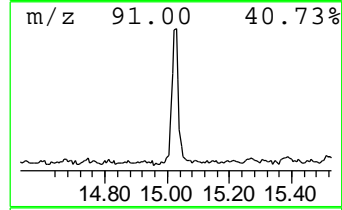
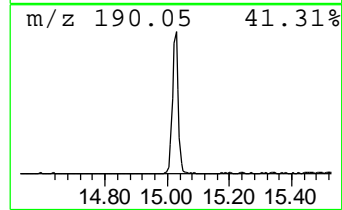
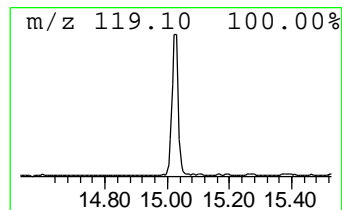
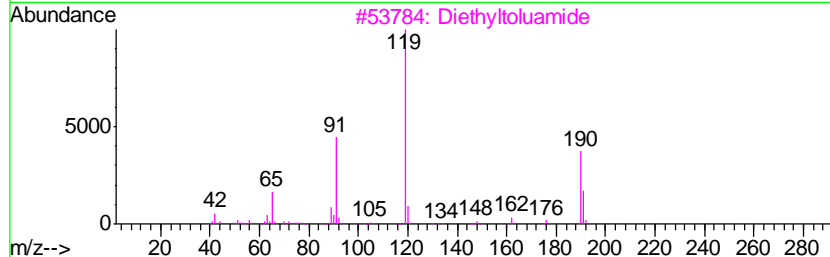
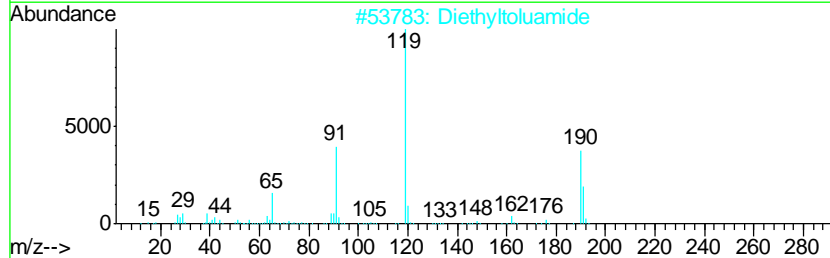
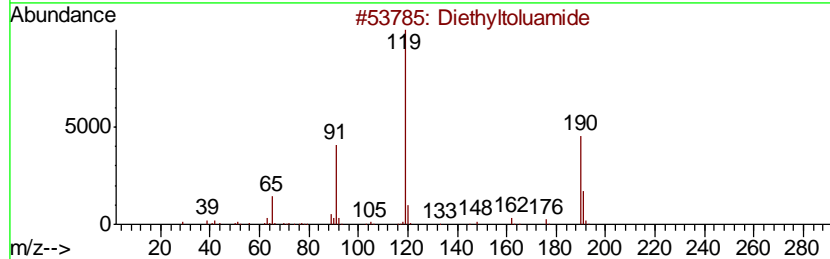
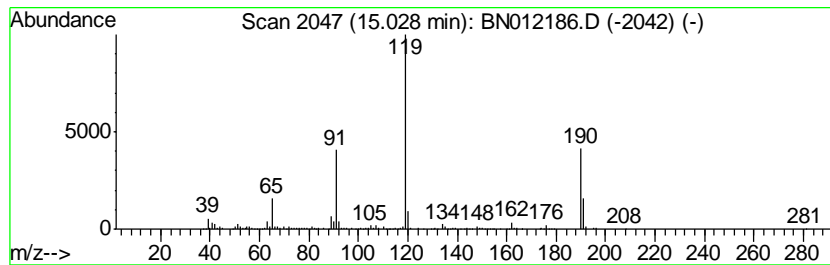
TIC Library : C:\DATABASE\NIST11.L  
 TIC Integration Parameters: LSCINT.P

\*\*\*\*\*  
 Peak Number 4 Diethyltoluamide Concentration Rank 6

R.T.	EstConc	Area	Relative to ISTD	R.T.
15.03	3.44 ng/ul	594877	Acenaphthene-d10	14.27

Hit#	of	Tentative ID	MW	MolForm	CAS#	Qual
1	5	Diethyltoluamide	191	C12H17NO	000134-62-3	97
2		Diethyltoluamide	191	C12H17NO	000134-62-3	95
3		Diethyltoluamide	191	C12H17NO	000134-62-3	87
4		Benzamide, N,N-diethyl-4-methyl-	191	C12H17NO	002728-05-4	87
5		Diethyltoluamide	191	C12H17NO	000134-62-3	74





Data Path : Z:\SVOASRV\HPCHEM1\BNA N\DATA\BN101320\  
 Data File : BN012186.D  
 Acq On : 14 Oct 2020 07:29  
 Operator : CG/JU  
 Sample : L4360-02  
 Misc :  
 ALS Vial : 34 Sample Multiplier: 1

Instrument :  
 BNA\_N  
 ClientSampled :  
 CB7W2

Quant Method : Z:\SVOASRV\HPCHEM1\BNA\_N\METHODS\SOM-EPA-BN100920.M  
 Quant Title : SVOA CALIBRATION

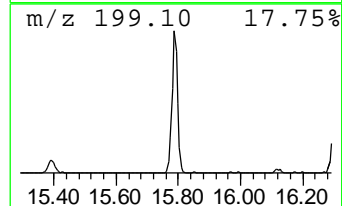
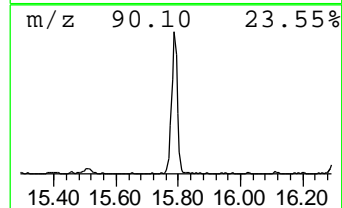
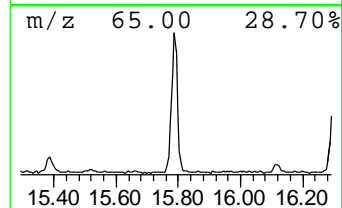
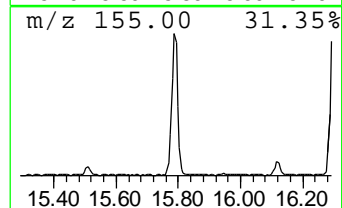
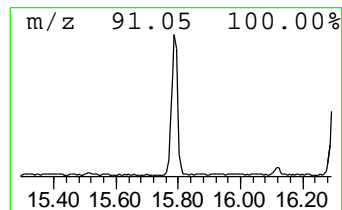
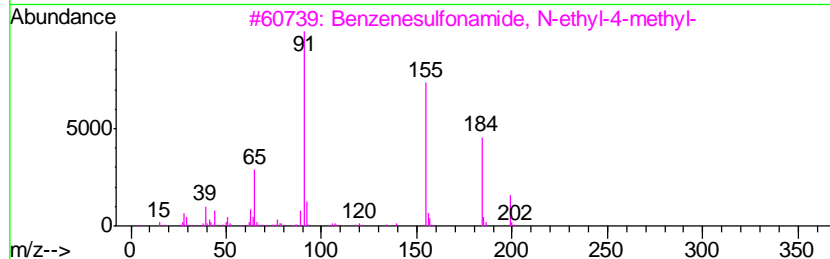
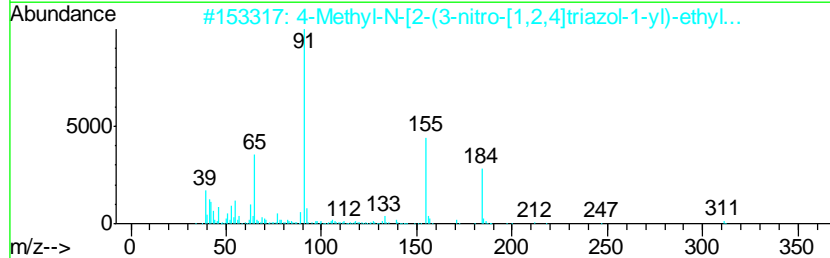
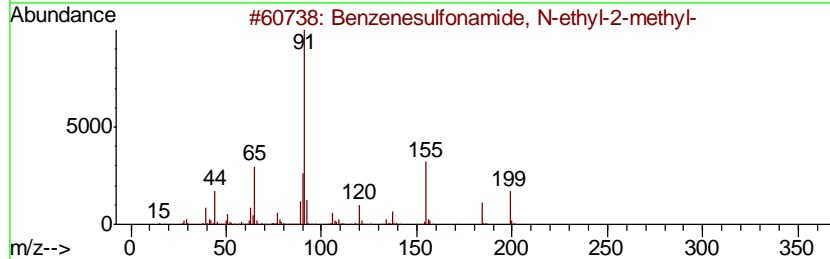
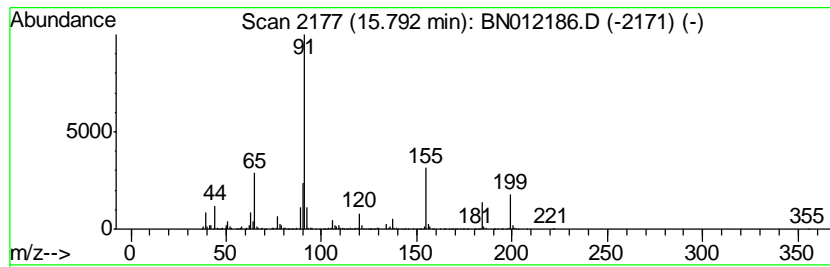
TIC Library : C:\DATABASE\NIST11.L  
 TIC Integration Parameters: LSCINT.P

\*\*\*\*\*  
 Peak Number 5 Benzenesulfonamide, N-ethyl... Concentration Rank 3

R.T.	EstConc	Area	Relative to ISTD	R.T.
15.79	6.15 ng/ul	1209950	Phenanthrene-d10	17.02

Hit#	of	Tentative ID	MW	MolForm	CAS#	Qual
1	5	Benzenesulfonamide, N-ethyl-2-me...	199	C9H13NO2S	001077-56-1	98
2		4-Methyl-N-[2-(3-nitro-[1,2,4]tr...	311	C11H13N5O4S	1000301-03-5	50
3		Benzenesulfonamide, N-ethyl-4-me...	199	C9H13NO2S	000080-39-7	49
4		Benzenesulfonamide, N-ethyl-2-me...	199	C9H13NO2S	001077-56-1	49
5		Benzenesulfonic acid, 3-methyl-,...	200	C9H12O3S	126865-08-5	43



Data Path : Z:\SVOASRV\HPCHEM1\BNA N\DATA\BN101320\  
 Data File : BN012186.D  
 Acq On : 14 Oct 2020 07:29  
 Operator : CG/JU  
 Sample : L4360-02  
 Misc :  
 ALS Vial : 34 Sample Multiplier: 1

Instrument :  
 BNA\_N  
 ClientSampled :  
 CB7W2

Quant Method : Z:\SVOASRV\HPCHEM1\BNA\_N\METHODS\SOM-EPA-BN100920.M  
 Quant Title : SVOA CALIBRATION

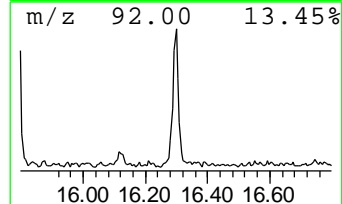
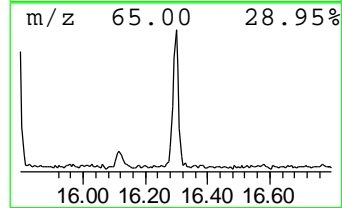
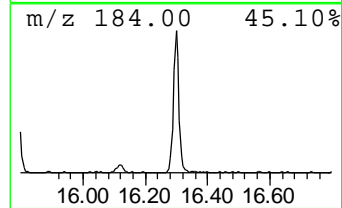
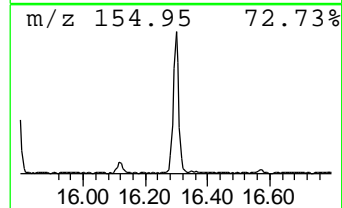
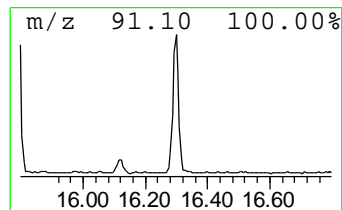
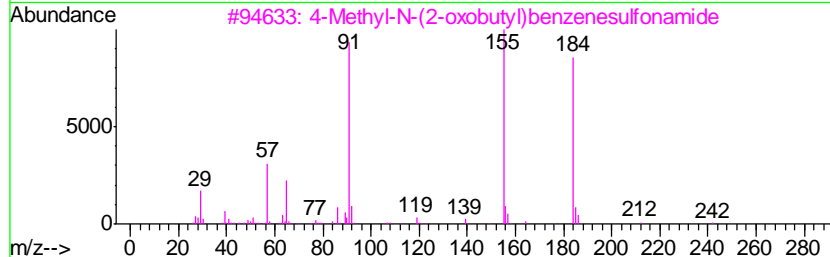
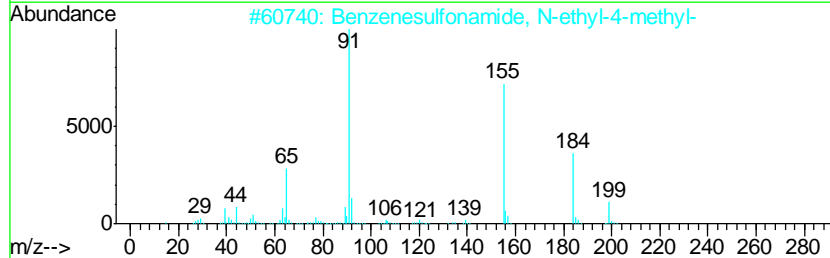
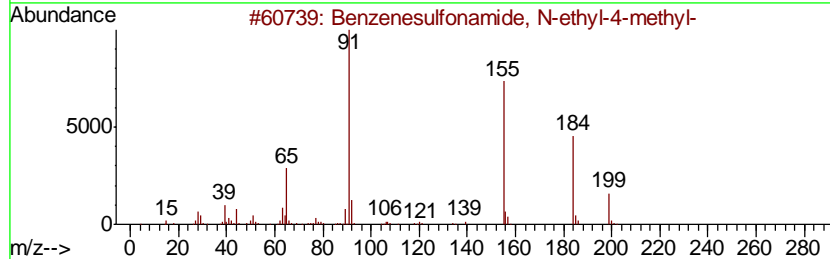
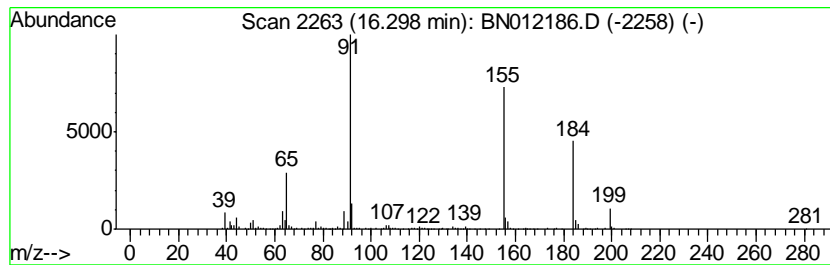
TIC Library : C:\DATABASE\NIST11.L  
 TIC Integration Parameters: LSCINT.P

\*\*\*\*\*  
 Peak Number 6 Benzenesulfonamide, N-ethyl... Concentration Rank 8

R.T.	EstConc	Area	Relative to ISTD	R.T.
16.30	3.32 ng/ul	652753	Phenanthrene-d10	17.02

Hit#	of	Tentative ID	MW	MolForm	CAS#	Qual
1	5	Benzenesulfonamide, N-ethyl-4-me...	199	C9H13NO2S	000080-39-7	97
2		Benzenesulfonamide, N-ethyl-4-me...	199	C9H13NO2S	000080-39-7	96
3		4-Methyl-N-(2-oxobutyl)benzenesu...	241	C11H15NO3S	1000192-14-5	78
4		Furazan-3-carboxylic acid, 4-ami...	325	C12H15N5O4S	1000304-69-4	78
5		(Toluene-4-sulfonylamino)-acetic...	283	C13H17NO4S	1000190-48-0	59



Data Path : Z:\SVOASRV\HPCHEM1\BNA N\DATA\BN101320\  
 Data File : BN012186.D  
 Acq On : 14 Oct 2020 07:29  
 Operator : CG/JU  
 Sample : L4360-02  
 Misc :  
 ALS Vial : 34 Sample Multiplier: 1

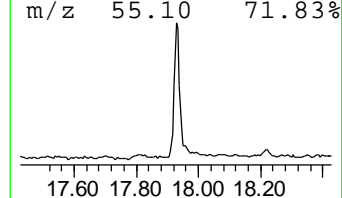
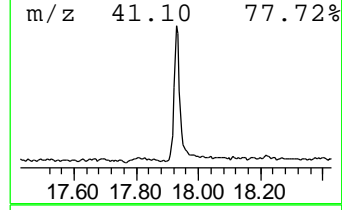
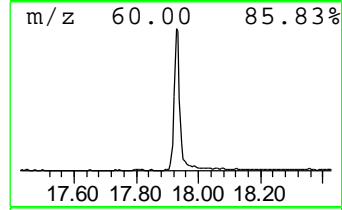
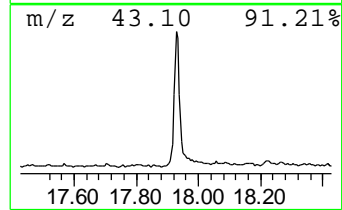
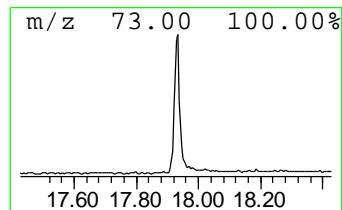
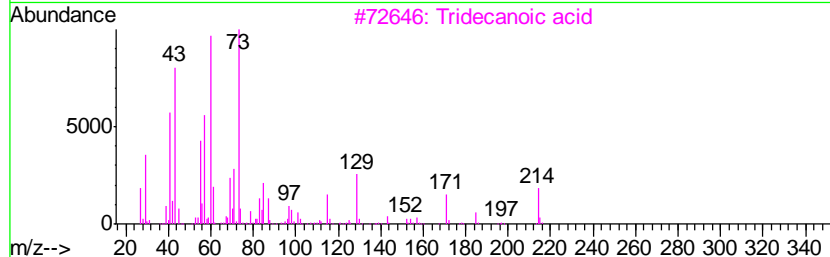
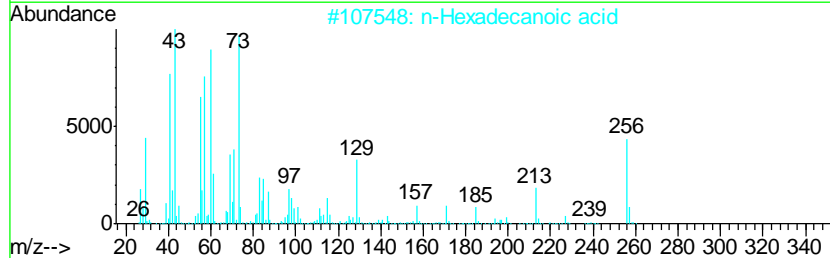
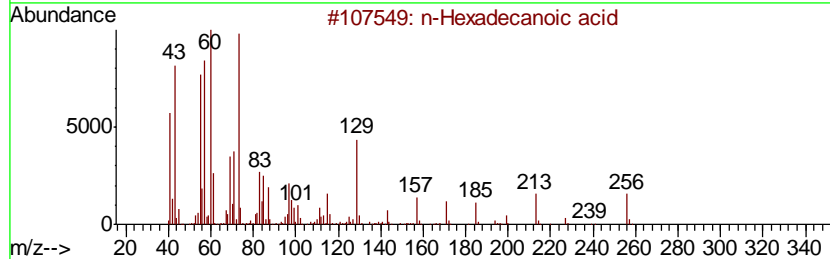
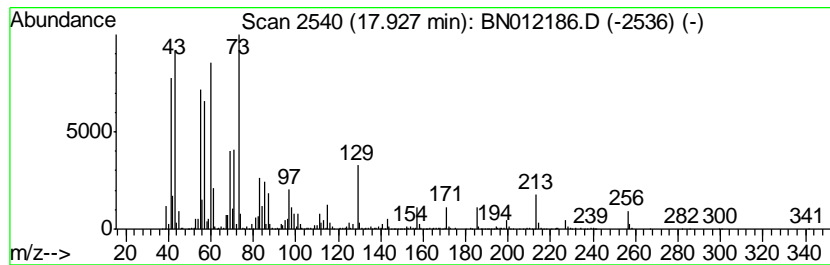
Instrument :  
 BNA\_N  
 ClientSampleID :  
 CB7W2

Quant Method : Z:\SVOASRV\HPCHEM1\BNA\_N\METHODS\SOM-EPA-BN100920.M  
 Quant Title : SVOA CALIBRATION

TIC Library : C:\DATABASE\NIST11.L  
 TIC Integration Parameters: LSCINT.P

\*\*\*\*\*  
 Peak Number 7 n-Hexadecanoic acid Concentration Rank 2

R.T.	EstConc	Area	Relative to ISTD	R.T.		
17.93	9.73 ng/ul	1913160	Phenanthrene-d10	17.02		
Hit# of	5	Tentative ID	MW	MolForm	CAS#	Qual
1		n-Hexadecanoic acid	256	C16H32O2	000057-10-3	99
2		n-Hexadecanoic acid	256	C16H32O2	000057-10-3	97
3		Tridecanoic acid	214	C13H26O2	000638-53-9	90
4		Pentadecanoic acid	242	C15H30O2	001002-84-2	87
5		n-Hexadecanoic acid	256	C16H32O2	000057-10-3	83



Data Path : Z:\SVOASRV\HPCHEM1\BNA N\DATA\BN101320\  
 Data File : BN012186.D  
 Acq On : 14 Oct 2020 07:29  
 Operator : CG/JU  
 Sample : L4360-02  
 Misc :  
 ALS Vial : 34 Sample Multiplier: 1

Instrument :  
 BNA\_N  
 ClientSampleID :  
 CB7W2

Quant Method : Z:\SVOASRV\HPCHEM1\BNA\_N\METHODS\SOM-EPA-BN100920.M  
 Quant Title : SVOA CALIBRATION

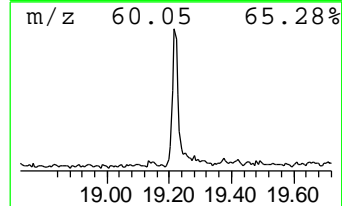
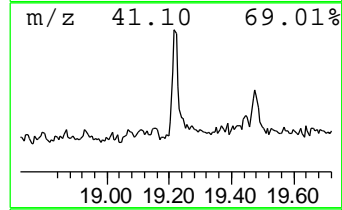
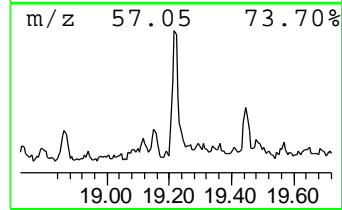
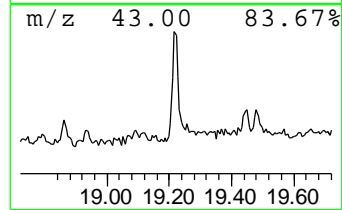
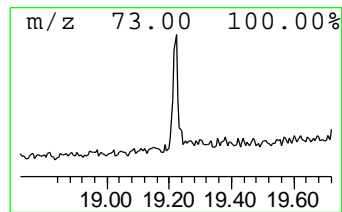
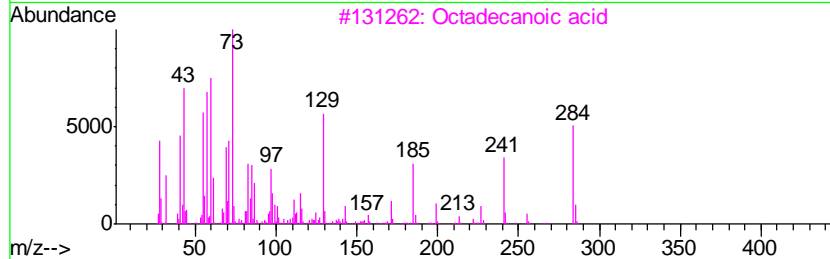
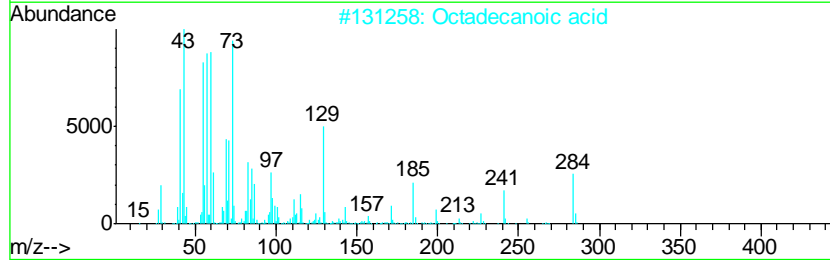
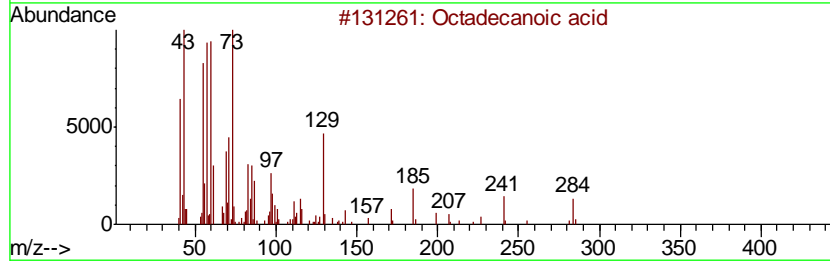
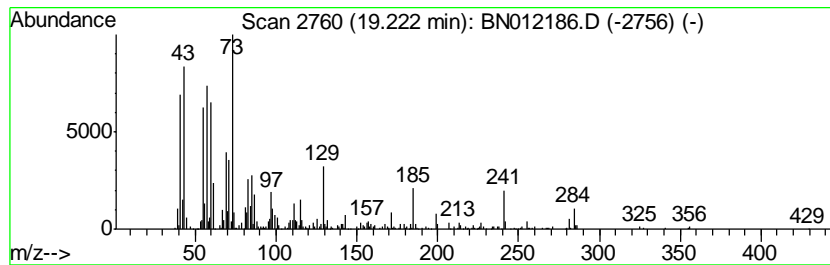
TIC Library : C:\DATABASE\NIST11.L  
 TIC Integration Parameters: LSCINT.P

\*\*\*\*\*  
 Peak Number 8 Octadecanoic acid Concentration Rank 11

R.T.	EstConc	Area	Relative to ISTD	R.T.
19.22	2.37 ng/ul	521159	Chrysene-d12	21.22

Hit#	of	Tentative ID	MW	MolForm	CAS#	Qual
1	5	Octadecanoic acid	284	C18H36O2	000057-11-4	99
2		Octadecanoic acid	284	C18H36O2	000057-11-4	99
3		Octadecanoic acid	284	C18H36O2	000057-11-4	98
4		Octadecanoic acid	284	C18H36O2	000057-11-4	92
5		Pentadecanoic acid	242	C15H30O2	001002-84-2	70



Data Path : Z:\SVOASRV\HPCHEM1\BNA N\DATA\BN101320\  
 Data File : BN012186.D  
 Acq On : 14 Oct 2020 07:29  
 Operator : CG/JU  
 Sample : L4360-02  
 Misc :  
 ALS Vial : 34 Sample Multiplier: 1

Instrument :  
 BNA\_N  
 ClientSampled :  
 CB7W2

Quant Method : Z:\SVOASRV\HPCHEM1\BNA\_N\METHODS\SOM-EPA-BN100920.M  
 Quant Title : SVOA CALIBRATION

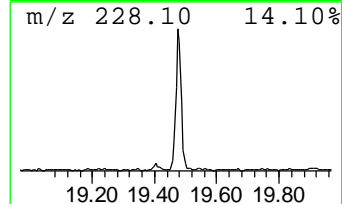
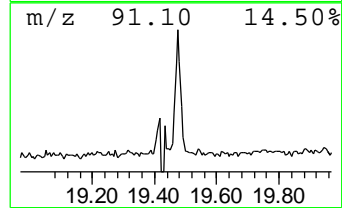
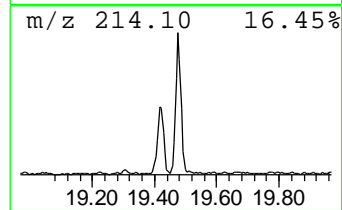
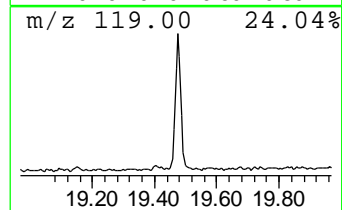
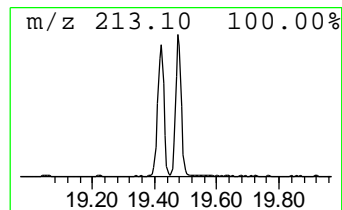
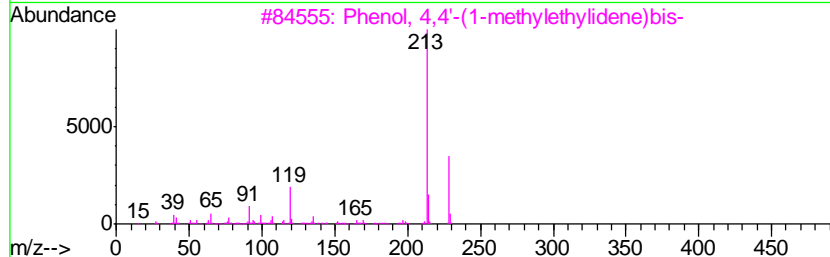
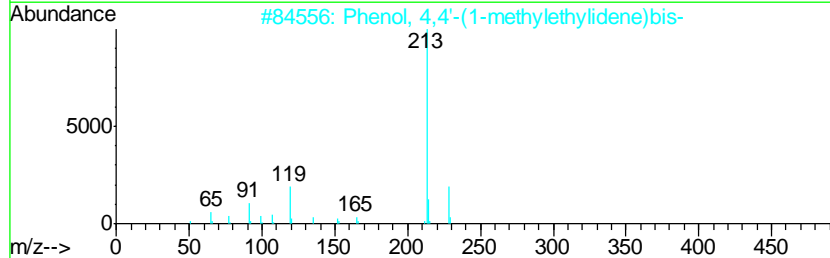
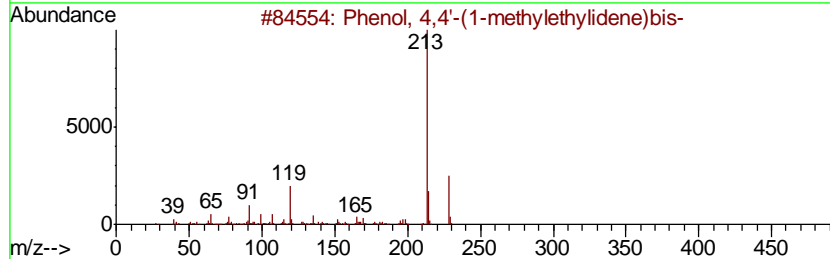
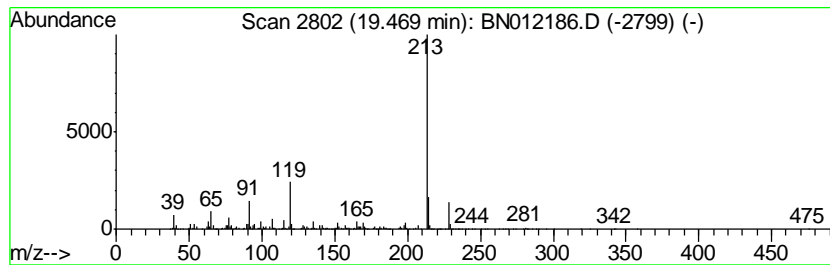
TIC Library : C:\DATABASE\NIST11.L  
 TIC Integration Parameters: LSCINT.P

\*\*\*\*\*  
 Peak Number 9 Phenol, 4,4'-(1-methylethyl... Concentration Rank 4

R.T.	EstConc	Area	Relative to ISTD	R.T.
19.47	5.66 ng/ul	1242630	Chrysene-d12	21.22

Hit#	of	Tentative ID	MW	MolForm	CAS#	Qual
1	5	Phenol, 4,4'-(1-methylethylidene...	228	C15H16O2	000080-05-7	97
2		Phenol, 4,4'-(1-methylethylidene...	228	C15H16O2	000080-05-7	96
3		Phenol, 4,4'-(1-methylethylidene...	228	C15H16O2	000080-05-7	93
4		2H,8H-Benzo[1,2-b:3,4-b']dipyran...	228	C14H12O3	000523-59-1	53
5		2H,8H-Benzo[1,2-b:5,4-b']dipyran...	228	C14H12O3	000553-19-5	53



Data Path : Z:\SVOASRV\HPCHEM1\BNA N\DATA\BN101320\  
 Data File : BN012186.D  
 Acq On : 14 Oct 2020 07:29  
 Operator : CG/JU  
 Sample : L4360-02  
 Misc :  
 ALS Vial : 34 Sample Multiplier: 1

Instrument :  
 BNA\_N  
 ClientSampleID :  
 CB7W2

Quant Method : Z:\SVOASRV\HPCHEM1\BNA\_N\METHODS\SOM-EPA-BN100920.M  
 Quant Title : SVOA CALIBRATION

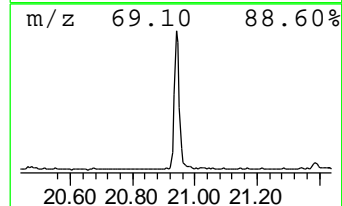
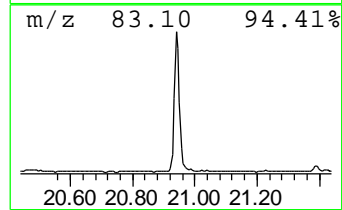
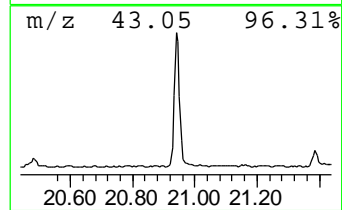
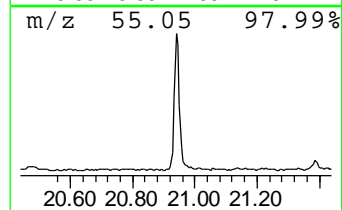
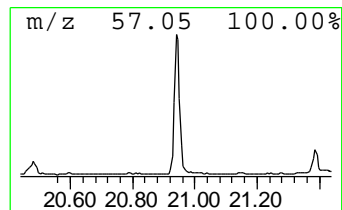
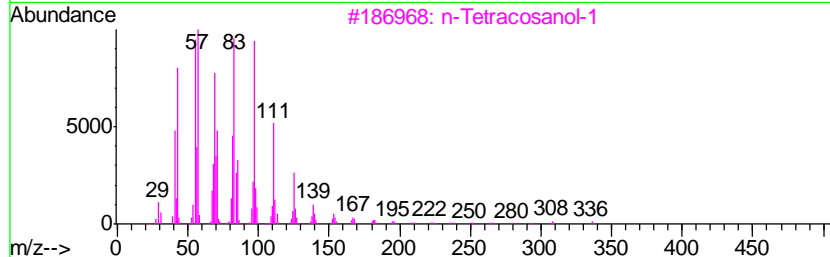
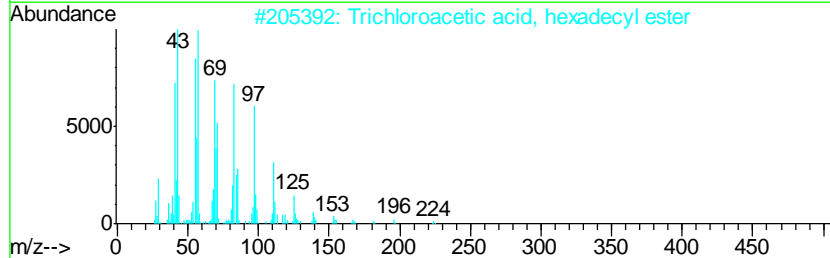
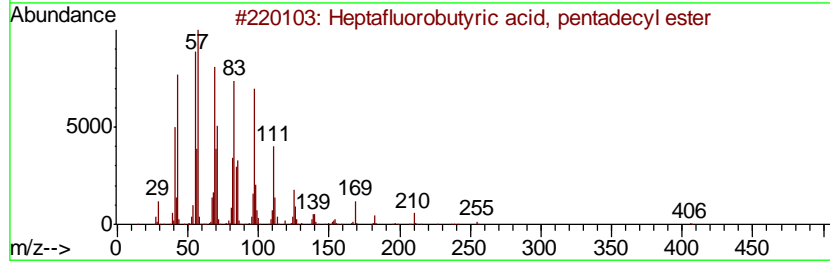
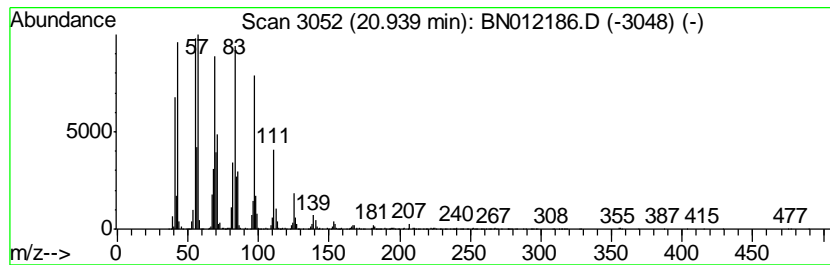
TIC Library : C:\DATABASE\NIST11.L  
 TIC Integration Parameters: LSCINT.P

\*\*\*\*\*  
 Peak Number 10 Heptafluorobutyric acid, pe... Concentration Rank 1

R.T.	EstConc	Area	Relative to ISTD	R.T.
20.94	14.84 ng/ul	3260280	Chrysene-d12	21.22

Hit#	of	Tentative ID	MW	MolForm	CAS#	Qual
1	5	Heptafluorobutyric acid, pentade...	424	C19H31F7O2	959261-23-5	94
2		Trichloroacetic acid, hexadecyl ...	386	C18H33Cl3O2	074339-54-1	94
3		n-Tetracosanol-1	354	C24H50O	000506-51-4	94
4		1-Heneicosanol	312	C21H44O	015594-90-8	94
5		Trifluoroacetoxy hexadecane	338	C18H33F3O2	006222-03-3	93



Data Path : Z:\SVOASRV\HPCHEM1\BNA N\DATA\BN101320\  
 Data File : BN012186.D  
 Acq On : 14 Oct 2020 07:29  
 Operator : CG/JU  
 Sample : L4360-02  
 Misc :  
 ALS Vial : 34 Sample Multiplier: 1

Instrument :  
 BNA\_N  
 ClientSampled :  
 CB7W2

Quant Method : Z:\SVOASRV\HPCHEM1\BNA\_N\METHODS\SOM-EPA-BN100920.M  
 Quant Title : SVOA CALIBRATION

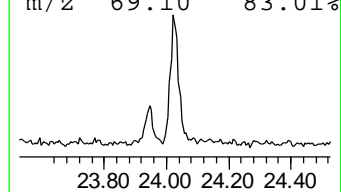
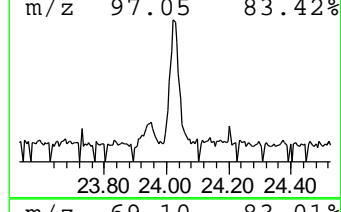
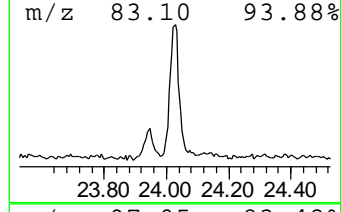
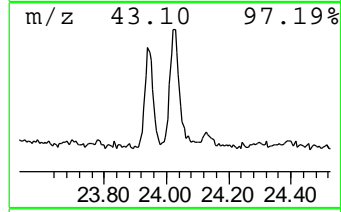
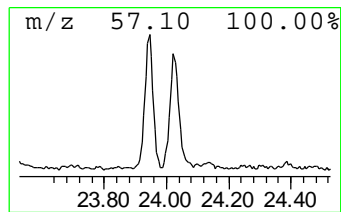
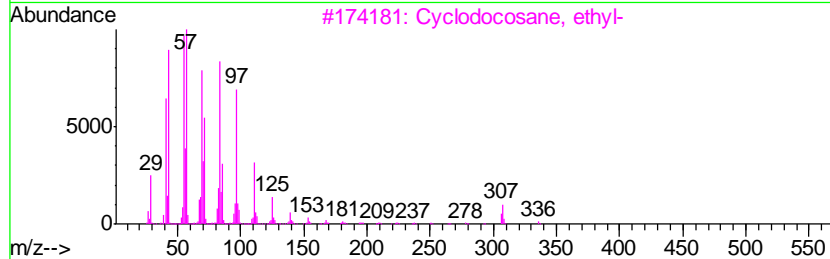
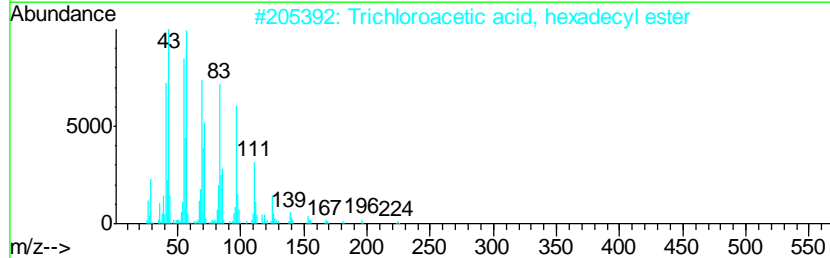
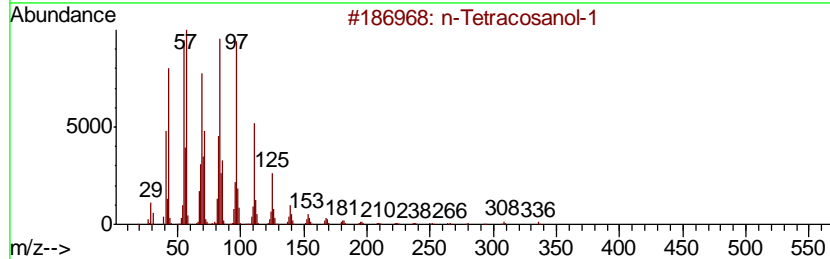
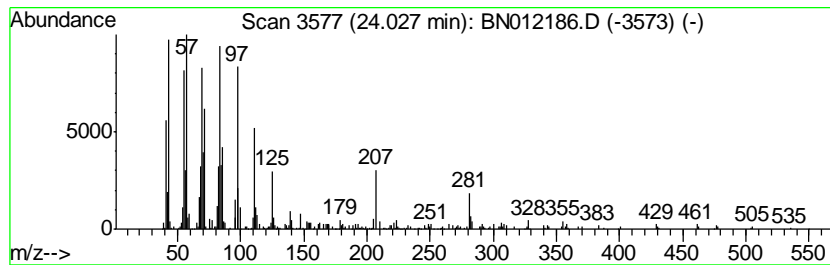
TIC Library : C:\DATABASE\NIST11.L  
 TIC Integration Parameters: LSCINT.P

\*\*\*\*\*  
 Peak Number 11 n-Tetracosanol-1 Concentration Rank 5

R.T.	EstConc	Area	Relative to ISTD	R.T.
24.03	4.31 ng/ul	918910	Perylene-d12	23.42

Hit#	of	Tentative ID	MW	MolForm	CAS#	Qual
1	5	n-Tetracosanol-1	354	C24H50O	000506-51-4	87
2		Trichloroacetic acid, hexadecyl ...	386	C18H33Cl3O2	074339-54-1	87
3		Cyclodocosane, ethyl-	336	C24H48	1000151-22-6	83
4		Behenic alcohol	326	C22H46O	000661-19-8	81
5		n-Nonadecanol-1	284	C19H40O	001454-84-8	76



Data Path : Z:\SVOASRV\HPCHEM1\BNA\_N\DATA\BN101320\  
 Data File : BN012186.D  
 Acq On : 14 Oct 2020 07:29  
 Operator : CG/JU  
 Sample : L4360-02  
 Misc :  
 ALS Vial : 34 Sample Multiplier: 1

Instrument :  
 BNA\_N  
 ClientSampleId :  
 CB7W2

Quant Method : Z:\SVOASRV\HPCHEM1\BNA\_N\METHODS\SOM-EPA-BN100920.M  
 Quant Title : SVOA CALIBRATION

TIC Library : C:\DATABASE\NIST11.L  
 TIC Integration Parameters: LSCINT.P

TIC Top Hit name	RT	EstConc	Units	Response	--Internal Standard--			
					#	RT	Resp	Conc
1,3-Oxathiolane	4.32	3.0	ng/ul	268023	1	7.63	1814720	20.0
Ethanol, 2-(2-eth...	7.25	2.8	ng/ul	253735	1	7.63	1814720	20.0
2,4,7,9-Tetrameth...	13.17	3.4	ng/ul	592765	3	14.27	3458210	20.0
Diethyltoluamide	15.03	3.4	ng/ul	594877	3	14.27	3458210	20.0
Benzenesulfonamid...	15.79	6.2	ng/ul	1209950	4	17.02	3932770	20.0
Benzenesulfonamid...	16.30	3.3	ng/ul	652753	4	17.02	3932770	20.0
n-Hexadecanoic acid	17.93	9.7	ng/ul	1913160	4	17.02	3932770	20.0
Octadecanoic acid	19.22	2.4	ng/ul	521159	5	21.22	4394390	20.0
Phenol, 4,4'-(1-m...	19.47	5.7	ng/ul	1242630	5	21.22	4394390	20.0
Heptafluorobutyri...	20.94	14.8	ng/ul	3260280	5	21.22	4394390	20.0
n-Tetracosanol-1	24.03	4.3	ng/ul	918910	6	23.42	4262640	20.0