

Data Path : Z:\svoasrv\HPCHEM1\BNA_N\Data\BN101321\
 Data File : BN016937.D
 Acq On : 13 Oct 2021 21:05
 Operator : CG/JU
 Sample : PB139115BS
 Misc :
 ALS Vial : 7 Sample Multiplier: 1

Instrument :
 BNA_N
 ClientSampleId :
 PB139115BS

Quant Time: Oct 14 02:10:47 2021
 Quant Method : Z:\SVOASRV\HPCHEM1\BNA_N\METHODS\8270-SIM-BN101321.M
 Quant Title : ASP BNA STANDARDS FOR 5 POINT CALIBRATION
 QLast Update : Wed Oct 13 02:19:57 2021
 Response via : Initial Calibration

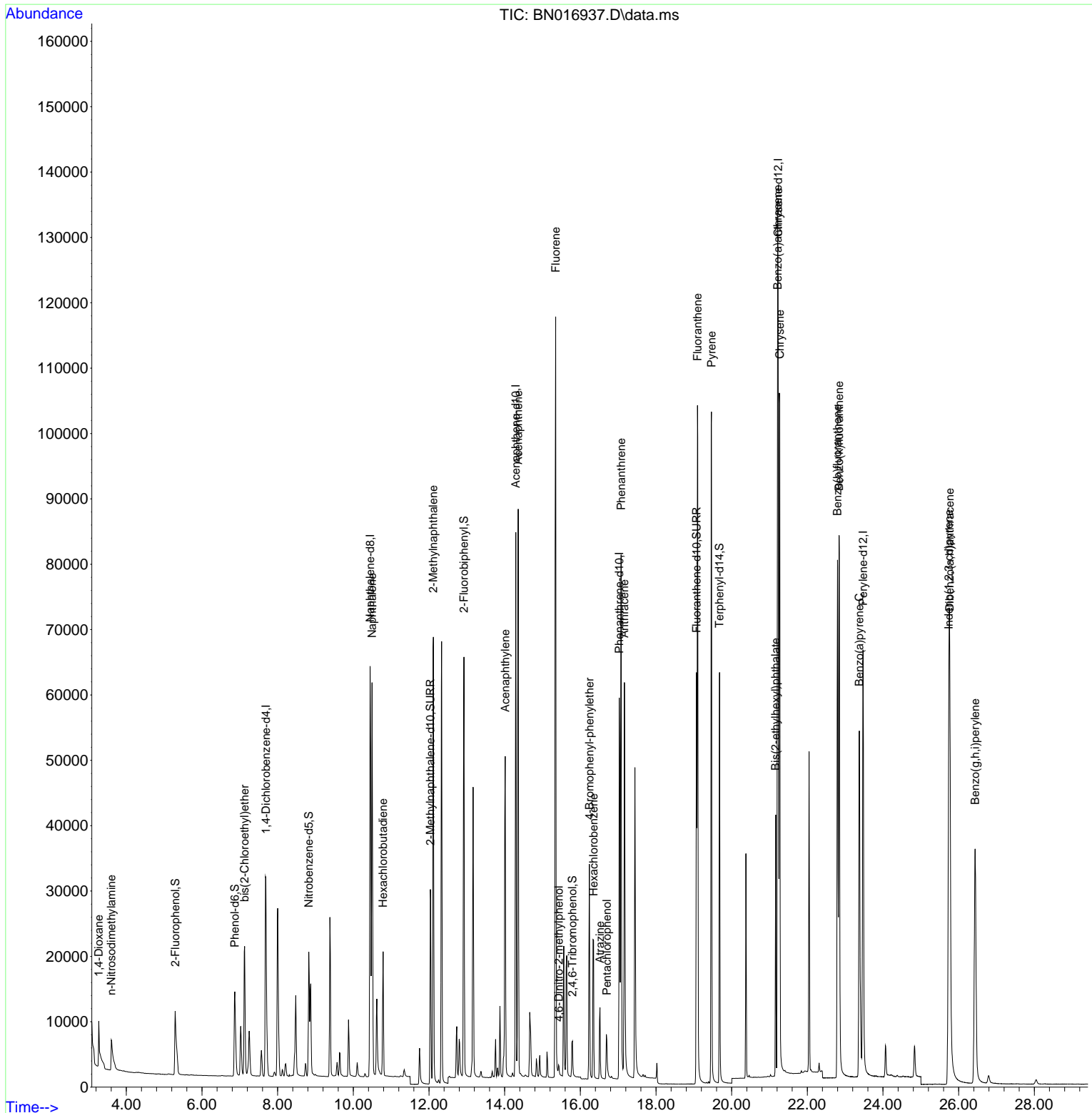
Compound	R.T.	QIon	Response	Conc	Units	Dev(Min)	
Internal Standards							
1) 1,4-Dichlorobenzene-d4	7.688	152	20352	0.40	ng	0.00	
7) Naphthalene-d8	10.445	136	89681	0.40	ng	#-0.01	
13) Acenaphthene-d10	14.294	164	45840	0.40	ng	0.00	
19) Phenanthrene-d10	17.030	188	88085	0.40	ng	#-0.01	
29) Chrysene-d12	21.227	240	89575	0.40	ng	0.00	
35) Perylene-d12	23.471	264	89113	0.40	ng	0.00	
System Monitoring Compounds							
4) 2-Fluorophenol	5.291	112	15553	0.34	ng	0.00	
5) Phenol-d6	6.868	99	17305	0.34	ng	0.00	
8) Nitrobenzene-d5	8.822	82	17861	0.31	ng	0.00	
11) 2-Methylnaphthalene-d10	12.038	152	41594	0.33	ng	0.00	
14) 2,4,6-Tribromophenol	15.791	330	5909	0.28	ng	0.00	
15) 2-Fluorobiphenyl	12.924	172	59827	0.34	ng	0.00	
27) Fluoranthene-d10	19.073	212	74333	0.34	ng	0.00	
31) Terphenyl-d14	19.678	244	65647	0.33	ng	0.00	
							Qvalue
2) 1,4-Dioxane	3.272	88	4582	0.34	ng		97
3) n-Nitrosodimethylamine	3.604	42	5342	0.34	ng		99
6) bis(2-Chloroethyl)ether	7.126	93	19180	0.35	ng		100
9) Naphthalene	10.495	128	78498	0.34	ng		99
10) Hexachlorobutadiene	10.787	225	15459	0.34	ng	#	100
12) 2-Methylnaphthalene	12.114	142	50381	0.34	ng		99
16) Acenaphthylene	14.015	152	60017	0.32	ng		100
17) Acenaphthene	14.358	154	43049	0.34	ng		99
18) Fluorene	15.347	166	51635	0.34	ng		100
20) 4,6-Dinitro-2-methylph...	15.436	198	1399	0.27	ng	#	92
21) 4-Bromophenyl-phenylether	16.239	248	16498	0.32	ng		97
22) Hexachlorobenzene	16.348	284	20045	0.34	ng		99
23) Atrazine	16.519	200	10310	0.32	ng		100
24) Pentachlorophenol	16.701	266	4765	0.36	ng		100
25) Phenanthrene	17.078	178	84446	0.34	ng		100
26) Anthracene	17.164	178	71357	0.33	ng		100
28) Fluoranthene	19.098	202	96724	0.36	ng		100
30) Pyrene	19.465	202	96222	0.34	ng		100
32) Benzo(a)anthracene	21.217	228	90006	0.33	ng		100
33) Chrysene	21.270	228	102828	0.35	ng		99
34) Bis(2-ethylhexyl)phtha...	21.164	149	31708	0.38	ng		99
36) Indeno(1,2,3-cd)pyrene	25.740	276	101084	0.30	ng		100
37) Benzo(b)fluoranthene	22.796	252	100303	0.35	ng		100
38) Benzo(k)fluoranthene	22.841	252	100397	0.35	ng		99
39) Benzo(a)pyrene	23.375	252	88507	0.34	ng		100
40) Dibenzo(a,h)anthracene	25.764	278	83190	0.30	ng		99
41) Benzo(g,h,i)perylene	26.435	276	81818	0.28	ng		100

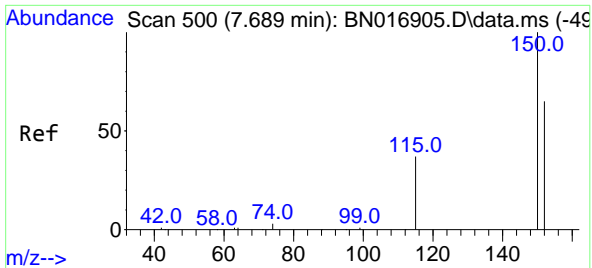
(#) = qualifier out of range (m) = manual integration (+) = signals summed

Data Path : Z:\svoasrv\HPCHEM1\BNA_N\Data\BN101321\
 Data File : BN016937.D
 Acq On : 13 Oct 2021 21:05
 Operator : CG/JU
 Sample : PB139115BS
 Misc :
 ALS Vial : 7 Sample Multiplier: 1

Instrument :
 BNA_N
 ClientSampled :
 PB139115BS

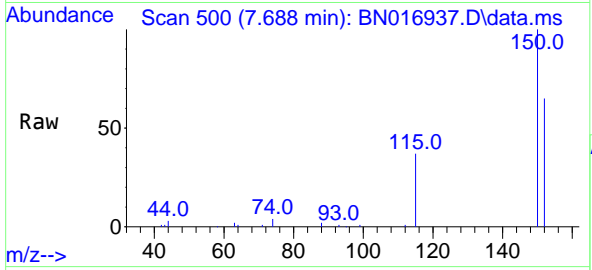
Quant Time: Oct 14 02:10:47 2021
 Quant Method : Z:\SVOASRV\HPCHEM1\BNA_N\METHODS\8270-SIM-BN101321.M
 Quant Title : ASP BNA STANDARDS FOR 5 POINT CALIBRATION
 QLast Update : Wed Oct 13 02:19:57 2021
 Response via : Initial Calibration



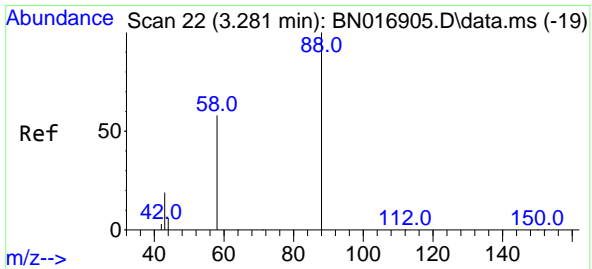
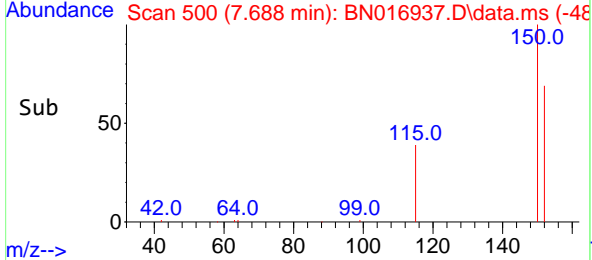
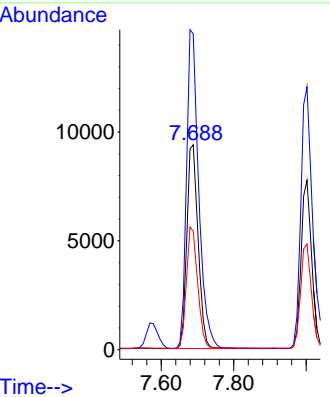


#1
 1,4-Dichlorobenzene-d4
 Concen: 0.40 ng
 RT: 7.688 min Scan# 500
 Delta R.T. -0.001 min
 Lab File: BN016937.D
 Acq: 13 Oct 2021 21:05

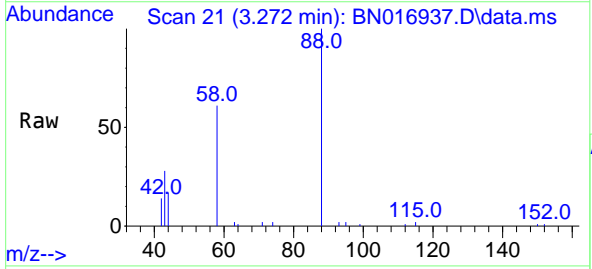
Instrument :
 BNA_N
ClientSampled :
 PB139115BS



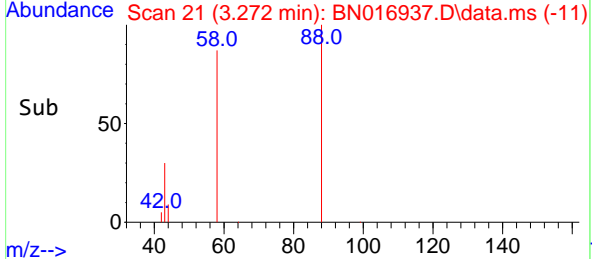
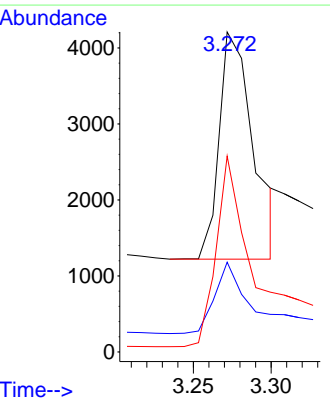
Tgt Ion:152 Resp: 20352
 Ion Ratio Lower Upper
 152 100
 150 154.1 122.6 183.8
 115 57.7 46.1 69.1



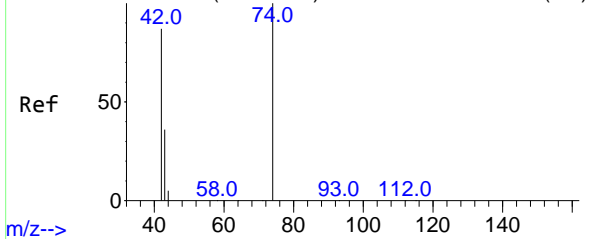
#2
 1,4-Dioxane
 Concen: 0.34 ng
 RT: 3.272 min Scan# 21
 Delta R.T. -0.009 min
 Lab File: BN016937.D
 Acq: 13 Oct 2021 21:05



Tgt Ion: 88 Resp: 4582
 Ion Ratio Lower Upper
 88 100
 43 29.6 24.3 36.5
 58 78.2 65.2 97.8

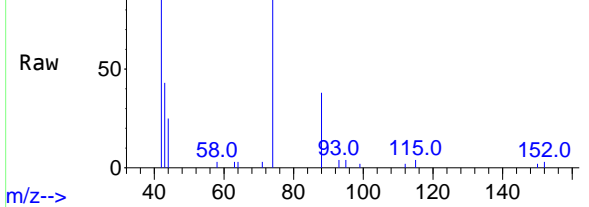


Abundance Scan 57 (3.604 min): BN016905.D\data.ms (-53)



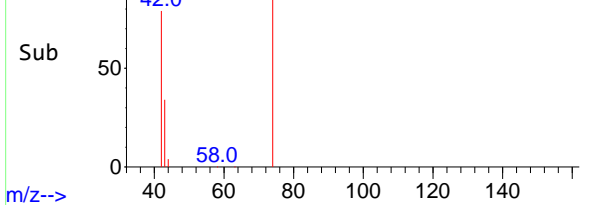
m/z-->

Abundance Scan 57 (3.604 min): BN016937.D\data.ms



m/z-->

Abundance Scan 57 (3.604 min): BN016937.D\data.ms (-46)

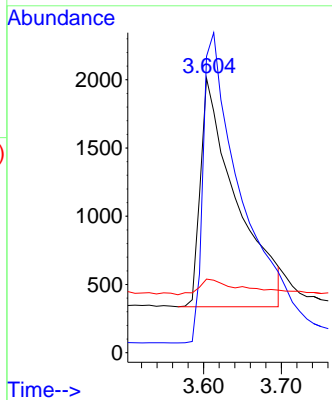


m/z-->

#3

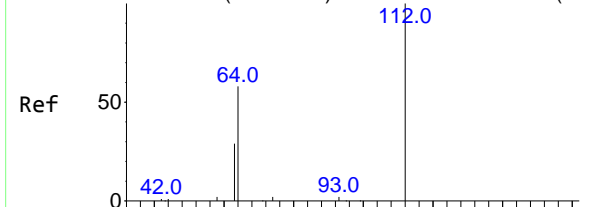
n-Nitrosodimethylamine
Concen: 0.34 ng
RT: 3.604 min Scan# 57
Delta R.T. -0.000 min
Lab File: BN016937.D
Acq: 13 Oct 2021 21:05

Tgt Ion	Resp	Lower	Upper
42	5342		
42	100		
74	143.6	114.4	171.6
44	7.9	5.7	8.5



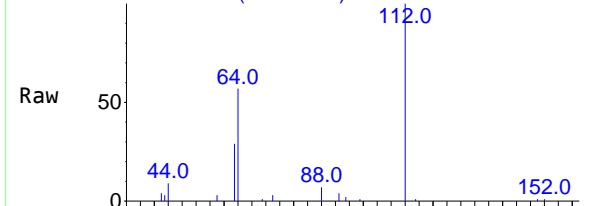
Instrument :
BNA_N
ClientSampled :
PB139115BS

Abundance Scan 240 (5.291 min): BN016905.D\data.ms (-23)



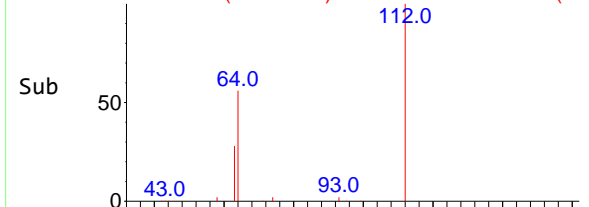
m/z-->

Abundance Scan 240 (5.291 min): BN016937.D\data.ms



m/z-->

Abundance Scan 240 (5.291 min): BN016937.D\data.ms (-22)

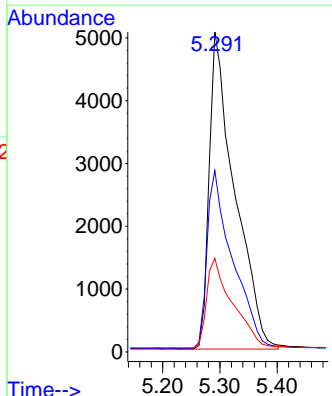


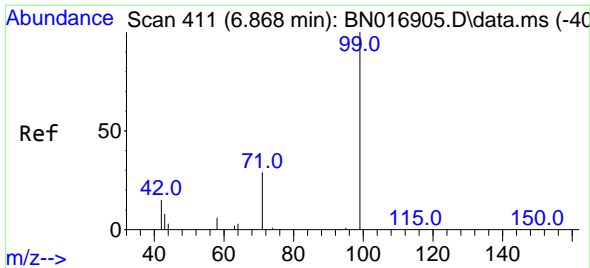
m/z-->

#4

2-Fluorophenol
Concen: 0.34 ng
RT: 5.291 min Scan# 240
Delta R.T. -0.000 min
Lab File: BN016937.D
Acq: 13 Oct 2021 21:05

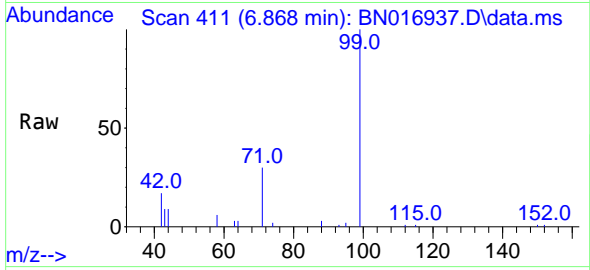
Tgt Ion	Resp	Lower	Upper
112	15553		
112	100		
64	56.6	45.0	67.4
63	28.6	22.6	33.8



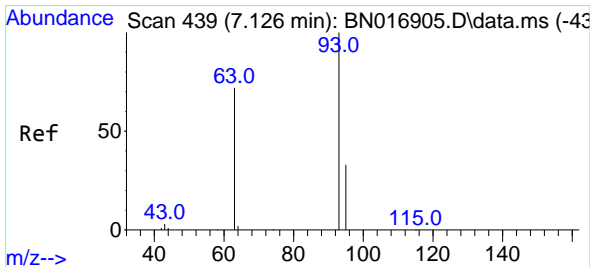
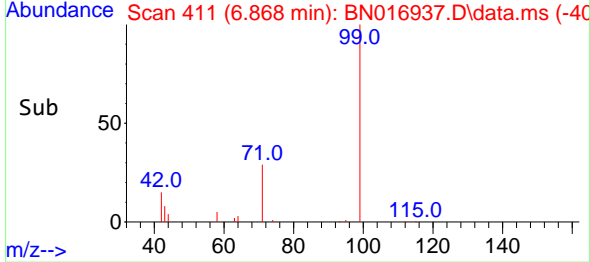
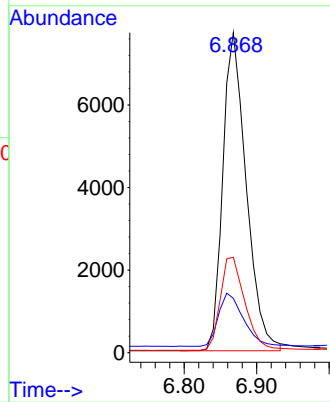


#5
 Phenol-d6
 Concen: 0.34 ng
 RT: 6.868 min Scan# 411
 Delta R.T. -0.000 min
 Lab File: BN016937.D
 Acq: 13 Oct 2021 21:05

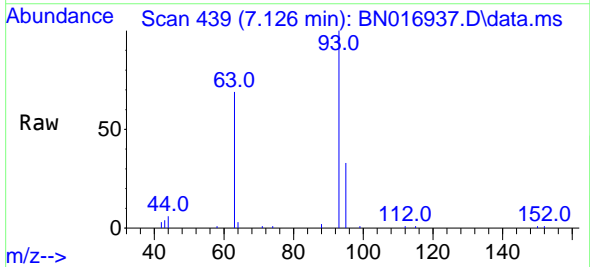
Instrument :
 BNA_N
 ClientSampled :
 PB139115BS



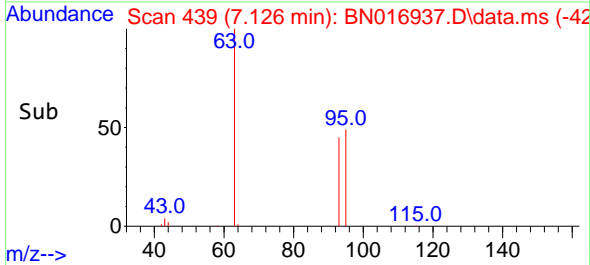
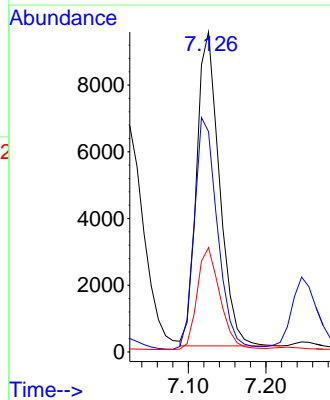
Tgt Ion: 99 Resp: 17305
 Ion Ratio Lower Upper
 99 100
 42 17.7 14.2 21.4
 71 30.6 24.5 36.7

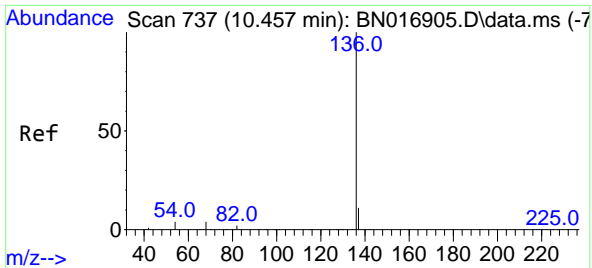


#6
 bis(2-Chloroethyl)ether
 Concen: 0.35 ng
 RT: 7.126 min Scan# 439
 Delta R.T. -0.000 min
 Lab File: BN016937.D
 Acq: 13 Oct 2021 21:05



Tgt Ion: 93 Resp: 19180
 Ion Ratio Lower Upper
 93 100
 63 75.0 60.3 90.5
 95 32.7 26.2 39.4



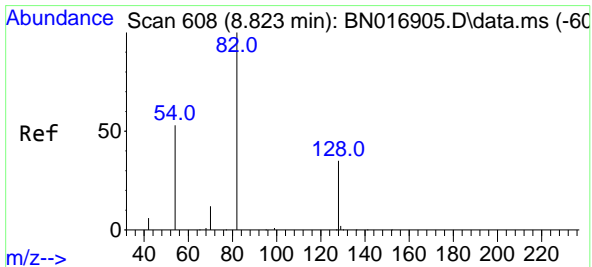
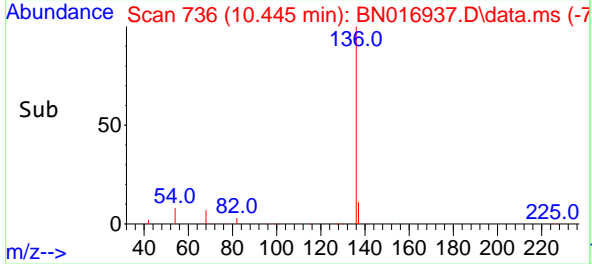
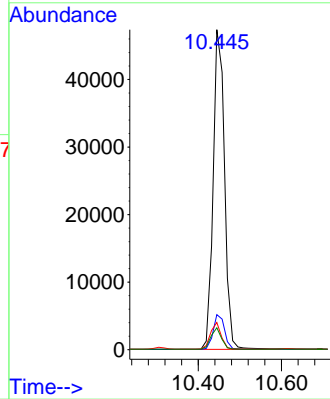
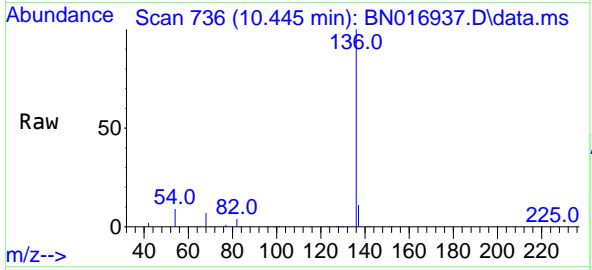


#7
 Naphthalene-d8
 Concen: 0.40 ng
 RT: 10.445 min Scan# 736
 Delta R.T. -0.012 min
 Lab File: BN016937.D
 Acq: 13 Oct 2021 21:05

Instrument :
 BNA_N
 ClientSampled :
 PB139115BS

Tgt Ion:136 Resp: 89681

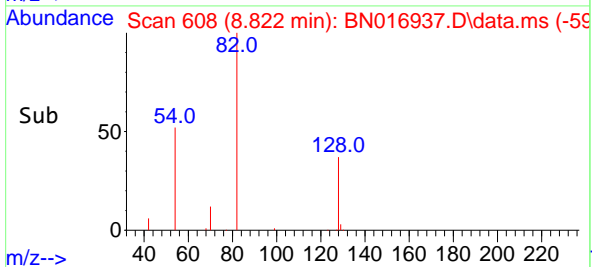
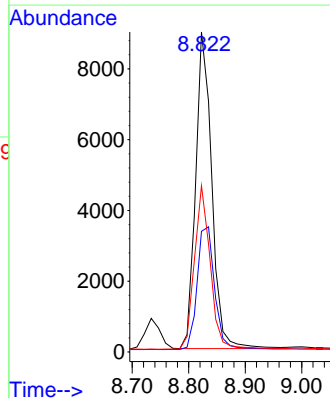
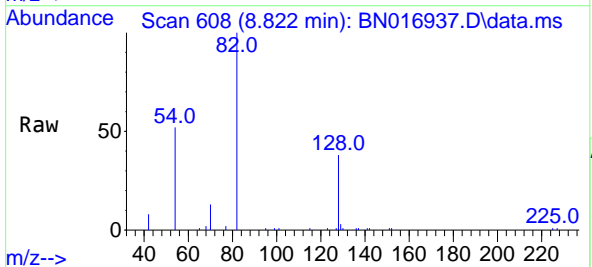
Ion	Ratio	Lower	Upper
136	100		
137	11.0	8.7	13.1
54	8.5	3.7	5.5#
68	6.8	3.2	4.8#

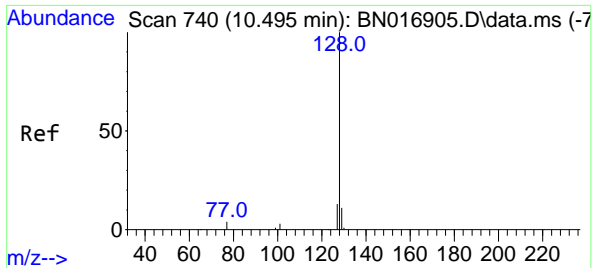


#8
 Nitrobenzene-d5
 Concen: 0.31 ng
 RT: 8.822 min Scan# 608
 Delta R.T. -0.000 min
 Lab File: BN016937.D
 Acq: 13 Oct 2021 21:05

Tgt Ion: 82 Resp: 17861

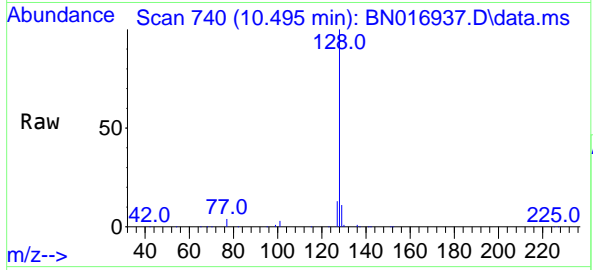
Ion	Ratio	Lower	Upper
82	100		
128	37.7	28.3	42.5
54	52.0	43.0	64.4





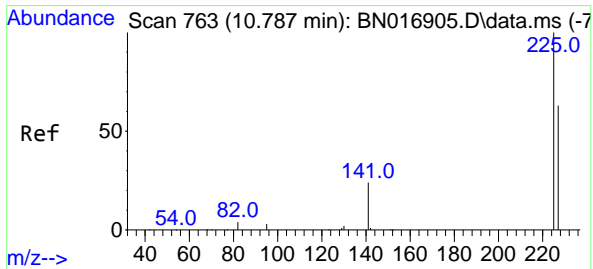
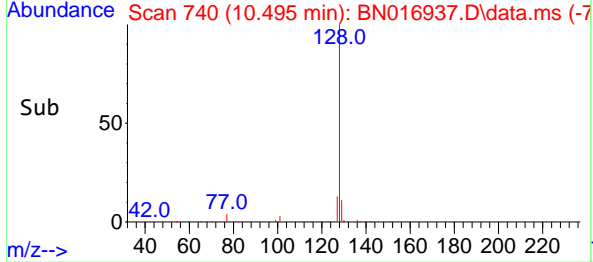
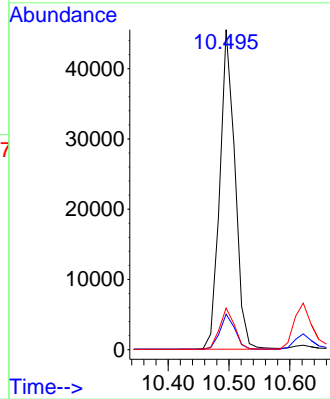
#9
 Naphthalene
 Concen: 0.34 ng
 RT: 10.495 min Scan# 740
 Delta R.T. -0.000 min
 Lab File: BN016937.D
 Acq: 13 Oct 2021 21:05

Instrument :
 BNA_N
 ClientSampled :
 PB139115BS



Tgt Ion:128 Resp: 78498

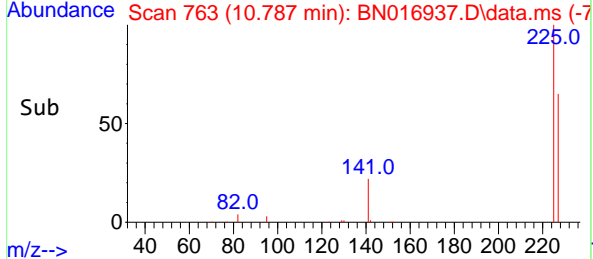
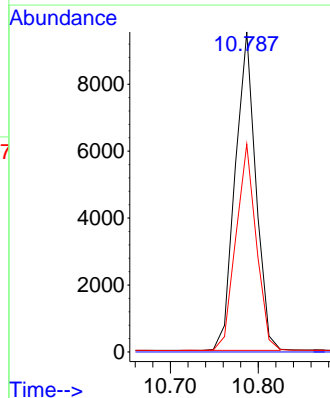
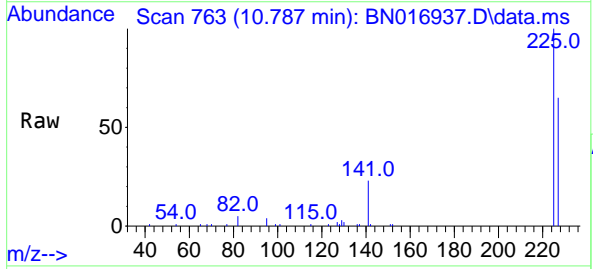
Ion	Ratio	Lower	Upper
128	100		
129	11.1	8.7	13.1
127	13.0	10.6	16.0

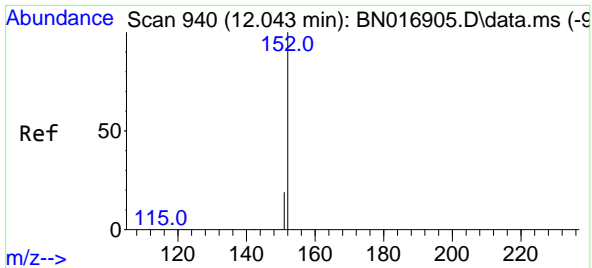


#10
 Hexachlorobutadiene
 Concen: 0.34 ng
 RT: 10.787 min Scan# 763
 Delta R.T. -0.000 min
 Lab File: BN016937.D
 Acq: 13 Oct 2021 21:05

Tgt Ion:225 Resp: 15459

Ion	Ratio	Lower	Upper
225	100		
223	0.0	0.0	0.0
227	64.2	51.1	76.7

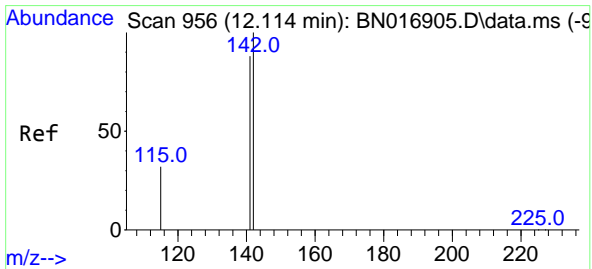
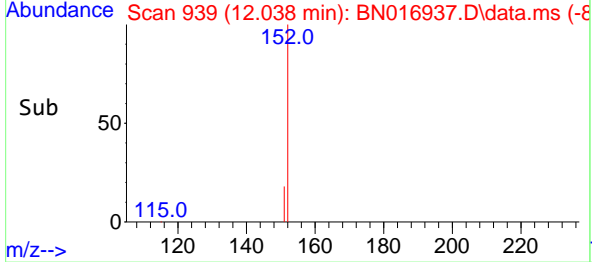
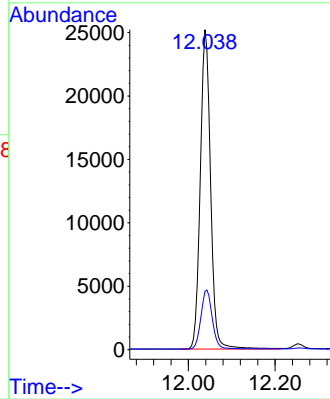
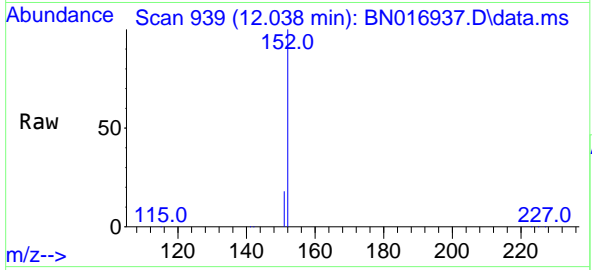




#11
 2-Methylnaphthalene-d10
 Concen: 0.33 ng
 RT: 12.038 min Scan# 939
 Delta R.T. -0.005 min
 Lab File: BN016937.D
 Acq: 13 Oct 2021 21:05

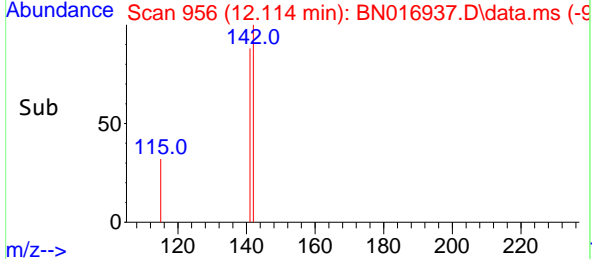
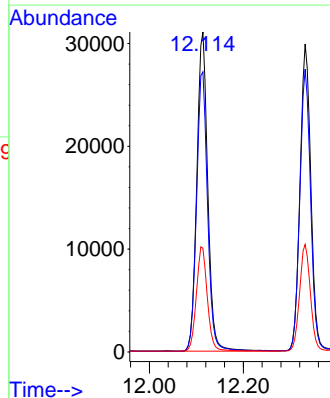
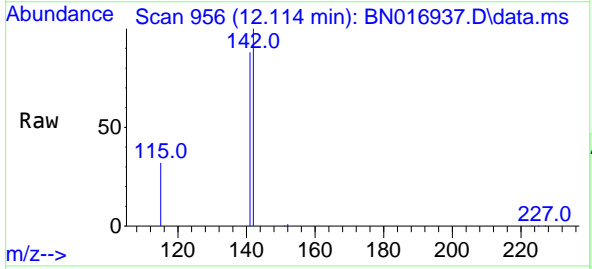
Instrument :
 BNA_N
 ClientSampled :
 PB139115BS

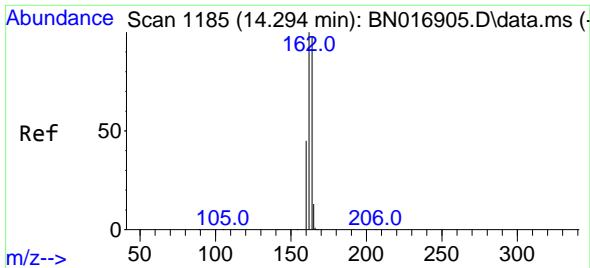
Tgt Ion:152 Resp: 41594
 Ion Ratio Lower Upper
 152 100
 151 20.5 16.2 24.4



#12
 2-Methylnaphthalene
 Concen: 0.34 ng
 RT: 12.114 min Scan# 956
 Delta R.T. -0.000 min
 Lab File: BN016937.D
 Acq: 13 Oct 2021 21:05

Tgt Ion:142 Resp: 50381
 Ion Ratio Lower Upper
 142 100
 141 87.5 70.5 105.7
 115 32.4 26.0 39.0



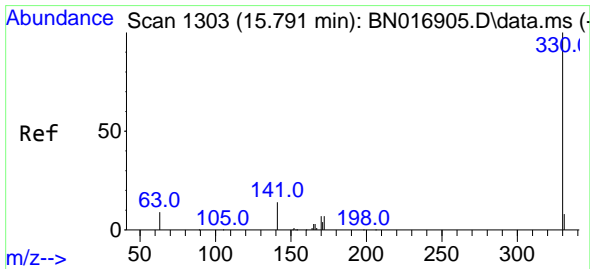
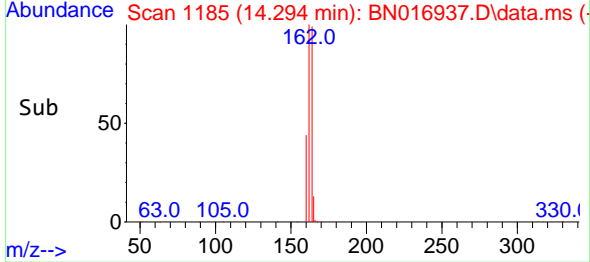
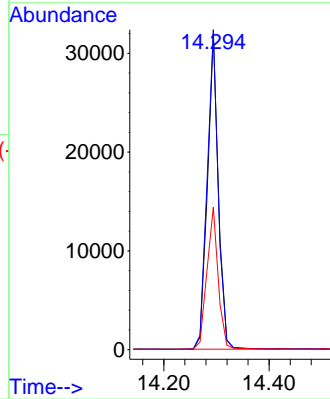
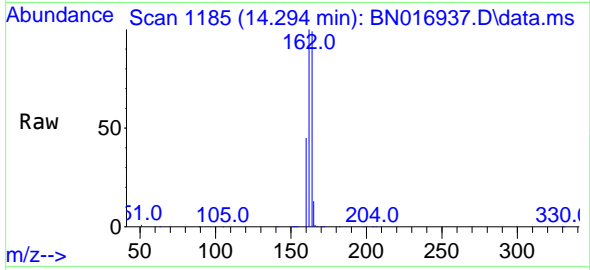


#13
 Acenaphthene-d10
 Concen: 0.40 ng
 RT: 14.294 min Scan# 1185
 Delta R.T. 0.000 min
 Lab File: BN016937.D
 Acq: 13 Oct 2021 21:05

Instrument :
 BNA_N
 ClientSampled :
 PB139115BS

Tgt Ion:164 Resp: 45840

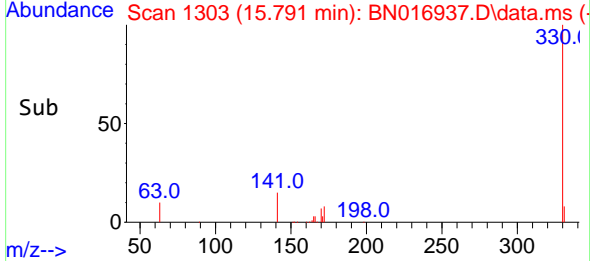
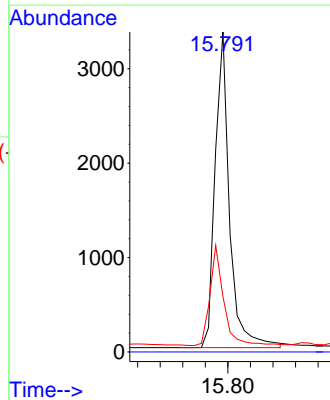
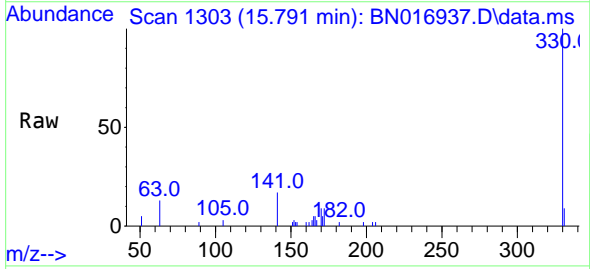
Ion	Ratio	Lower	Upper
164	100		
162	101.2	81.4	122.0
160	45.1	37.0	55.4

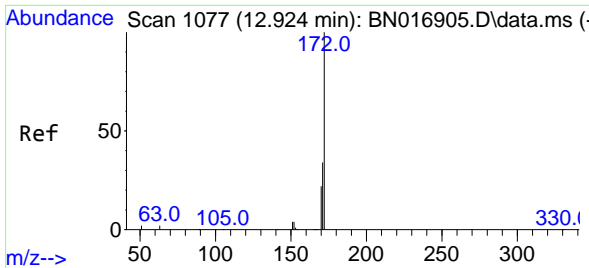


#14
 2,4,6-Tribromophenol
 Concen: 0.28 ng
 RT: 15.791 min Scan# 1303
 Delta R.T. 0.000 min
 Lab File: BN016937.D
 Acq: 13 Oct 2021 21:05

Tgt Ion:330 Resp: 5909

Ion	Ratio	Lower	Upper
330	100		
332	0.0	0.0	0.0
141	30.4	24.4	36.6



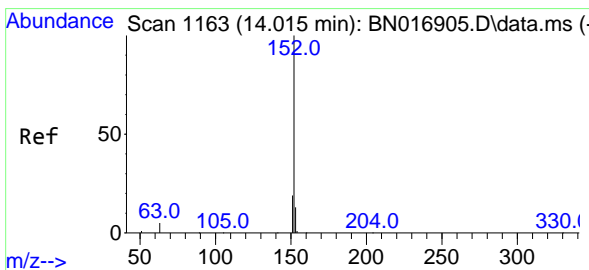
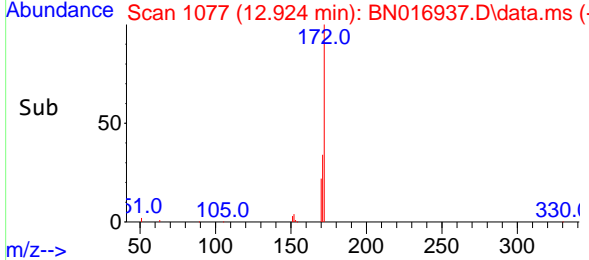
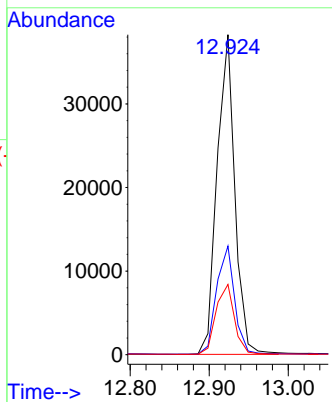
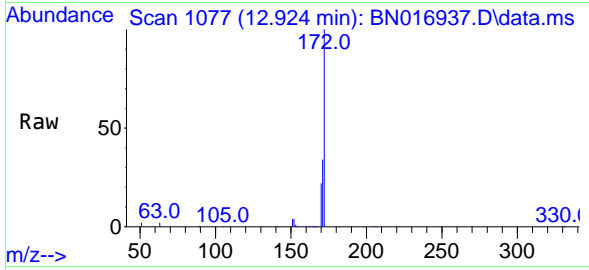


#15
 2-Fluorobiphenyl
 Concen: 0.34 ng
 RT: 12.924 min Scan# 1077
 Delta R.T. -0.000 min
 Lab File: BN016937.D
 Acq: 13 Oct 2021 21:05

Instrument :
 BNA_N
 ClientSampled :
 PB139115BS

Tgt Ion:172 Resp: 59827

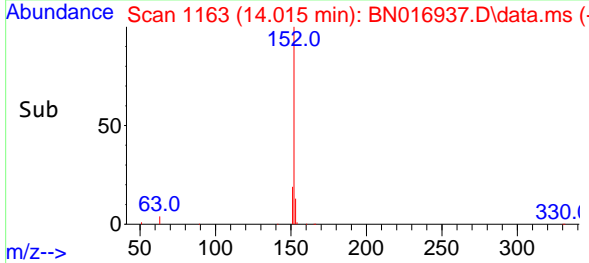
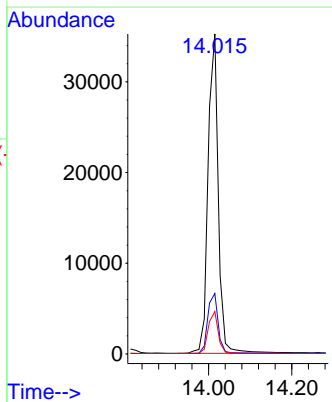
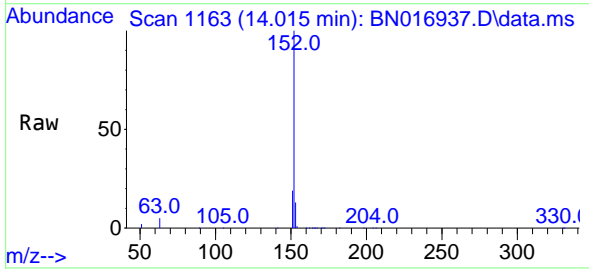
Ion	Ratio	Lower	Upper
172	100		
171	33.9	27.4	41.0
170	22.0	18.1	27.1

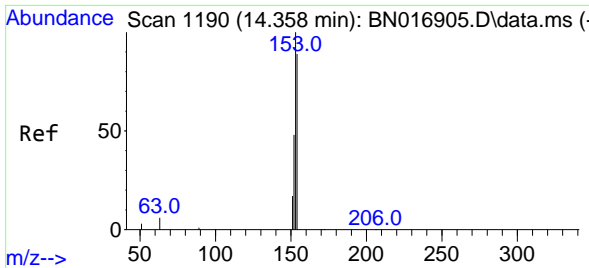


#16
 Acenaphthylene
 Concen: 0.32 ng
 RT: 14.015 min Scan# 1163
 Delta R.T. -0.000 min
 Lab File: BN016937.D
 Acq: 13 Oct 2021 21:05

Tgt Ion:152 Resp: 60017

Ion	Ratio	Lower	Upper
152	100		
151	19.3	15.5	23.3
153	13.0	10.3	15.5



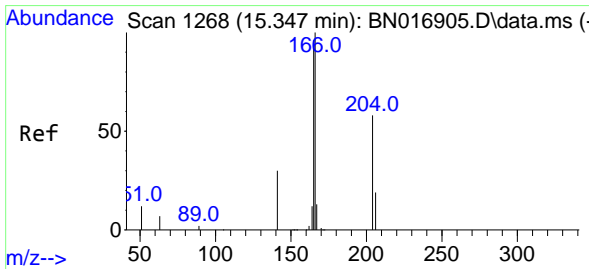
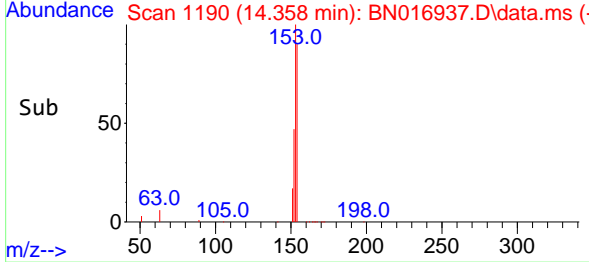
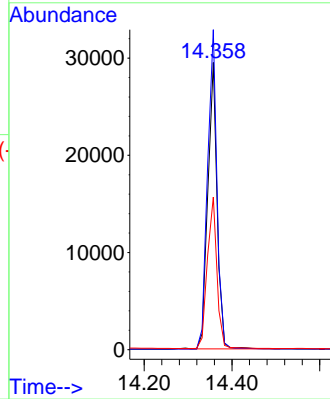
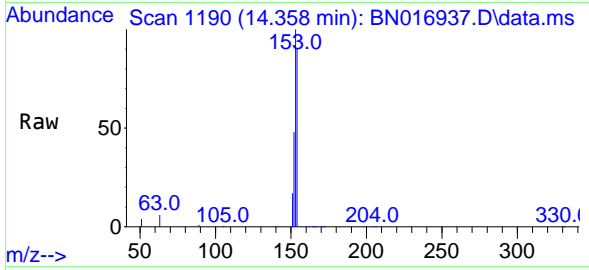


#17
 Acenaphthene
 Concen: 0.34 ng
 RT: 14.358 min Scan# 1190
 Delta R.T. -0.000 min
 Lab File: BN016937.D
 Acq: 13 Oct 2021 21:05

Instrument :
 BNA_N
 ClientSampleId :
 PB139115BS

Tgt Ion:154 Resp: 43049

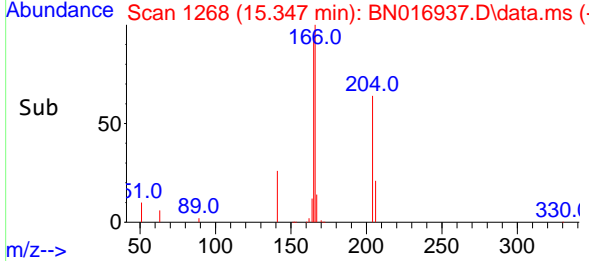
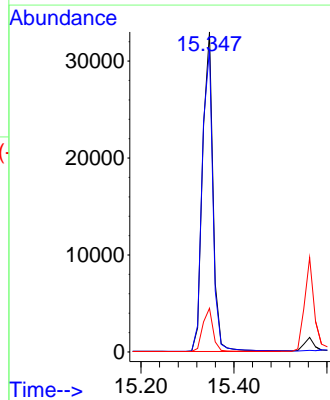
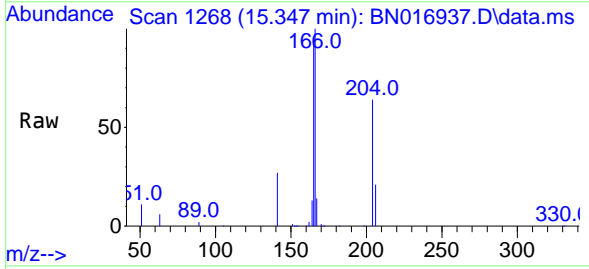
Ion	Ratio	Lower	Upper
154	100		
153	113.2	91.2	136.8
152	54.8	44.4	66.6

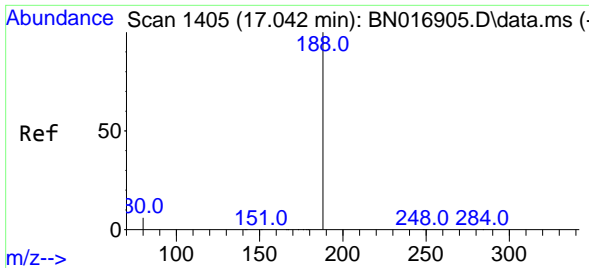


#18
 Fluorene
 Concen: 0.34 ng
 RT: 15.347 min Scan# 1268
 Delta R.T. -0.000 min
 Lab File: BN016937.D
 Acq: 13 Oct 2021 21:05

Tgt Ion:166 Resp: 51635

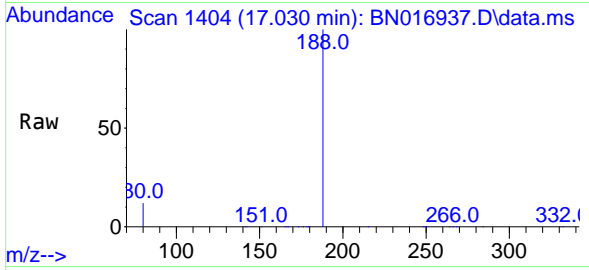
Ion	Ratio	Lower	Upper
166	100		
165	97.3	78.1	117.1
167	13.5	10.7	16.1





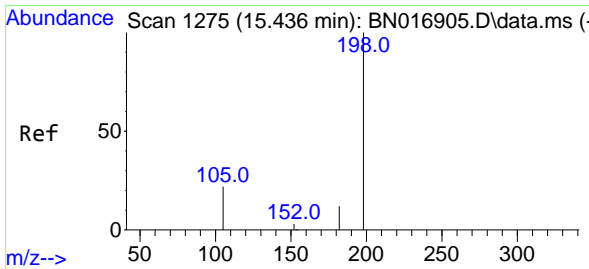
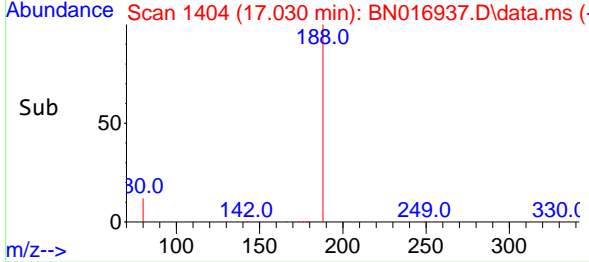
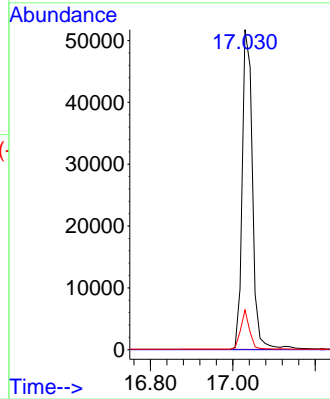
#19
 Phenanthrene-d10
 Concen: 0.40 ng
 RT: 17.030 min Scan# 1404
 Delta R.T. -0.012 min
 Lab File: BN016937.D
 Acq: 13 Oct 2021 21:05

Instrument :
 BNA_N
 ClientSampleId :
 PB139115BS

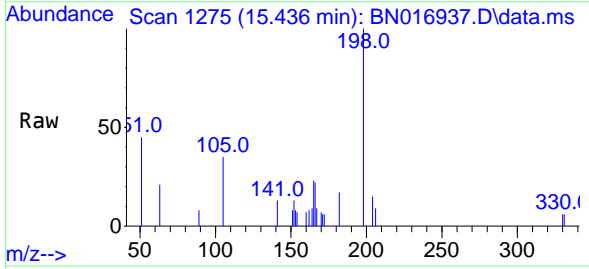


Tgt Ion:188 Resp: 88085

Ion	Ratio	Lower	Upper
188	100		
94	0.0	0.0	0.0
80	12.4	4.9	7.3#

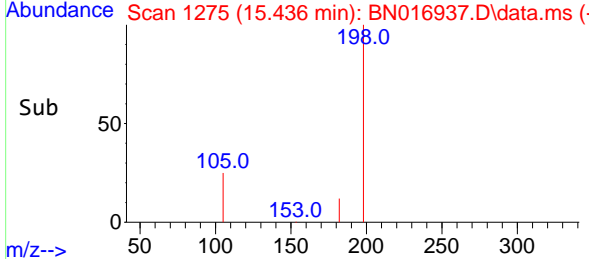
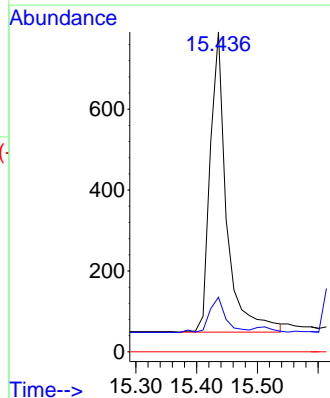


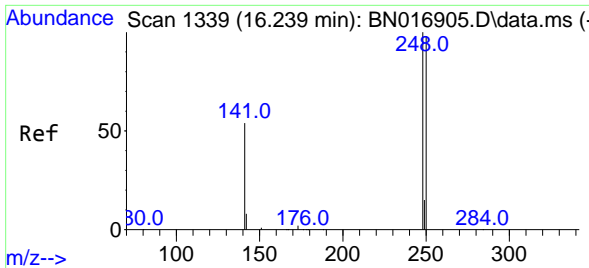
#20
 4,6-Dinitro-2-methylphenol
 Concen: 0.27 ng
 RT: 15.436 min Scan# 1275
 Delta R.T. -0.000 min
 Lab File: BN016937.D
 Acq: 13 Oct 2021 21:05



Tgt Ion:198 Resp: 1399

Ion	Ratio	Lower	Upper
198	100		
182	17.1	11.0	16.6#
77	0.0	0.0	0.0



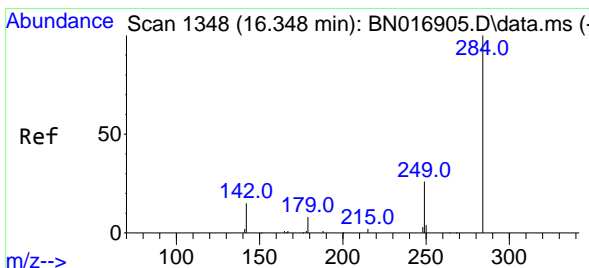
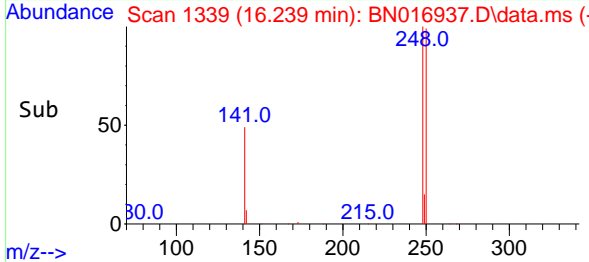
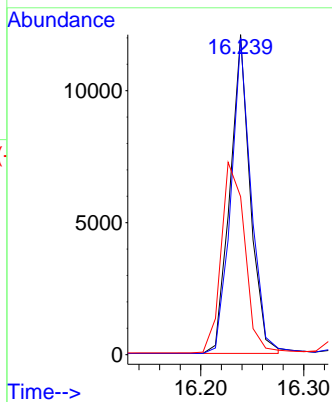
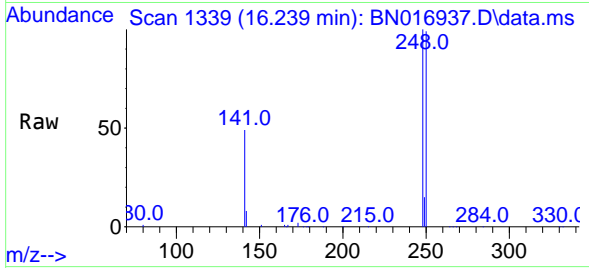


#21
 4-Bromophenyl-phenylether
 Concen: 0.32 ng
 RT: 16.239 min Scan# 1339
 Delta R.T. -0.000 min
 Lab File: BN016937.D
 Acq: 13 Oct 2021 21:05

Instrument :
 BNA_N
 ClientSampled :
 PB139115BS

Tgt Ion:248 Resp: 16498

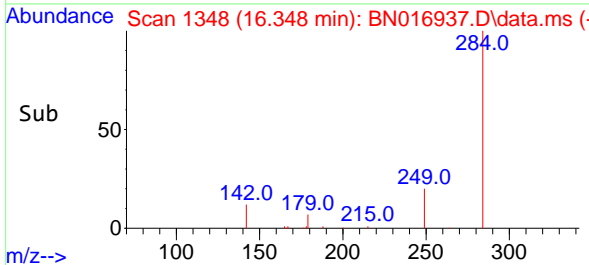
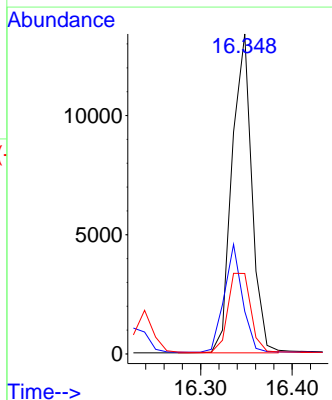
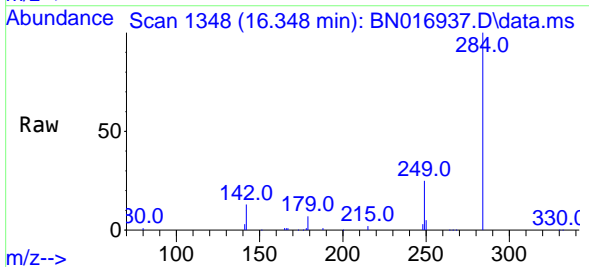
Ion	Ratio	Lower	Upper
248	100		
250	99.0	78.2	117.2
141	49.4	43.1	64.7

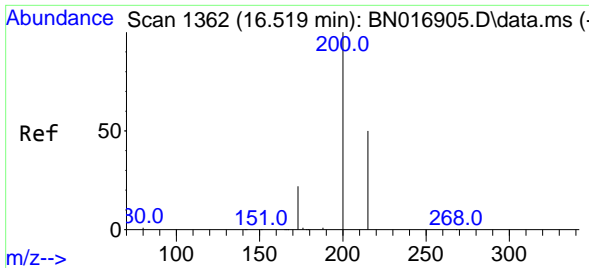


#22
 Hexachlorobenzene
 Concen: 0.34 ng
 RT: 16.348 min Scan# 1348
 Delta R.T. 0.000 min
 Lab File: BN016937.D
 Acq: 13 Oct 2021 21:05

Tgt Ion:284 Resp: 20045

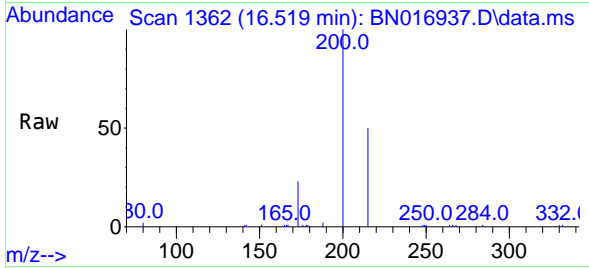
Ion	Ratio	Lower	Upper
284	100		
142	31.2	25.1	37.7
249	28.6	23.2	34.8



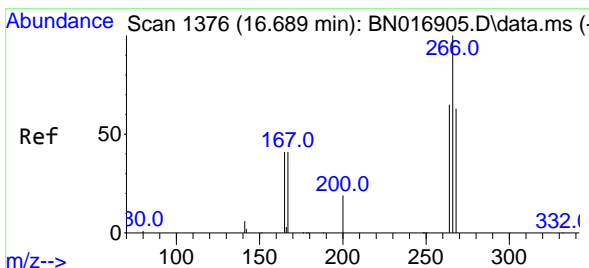
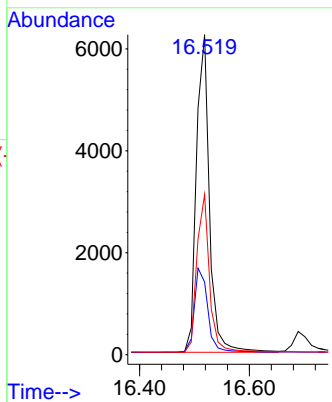
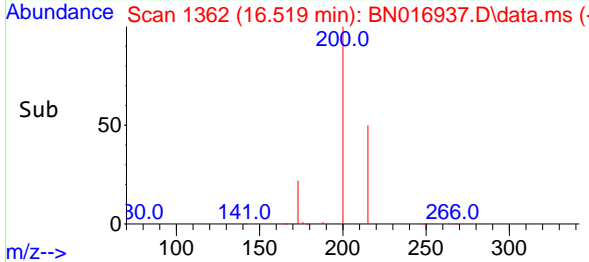


#23
 Atrazine
 Concen: 0.32 ng
 RT: 16.519 min Scan# 1362
 Delta R.T. -0.000 min
 Lab File: BN016937.D
 Acq: 13 Oct 2021 21:05

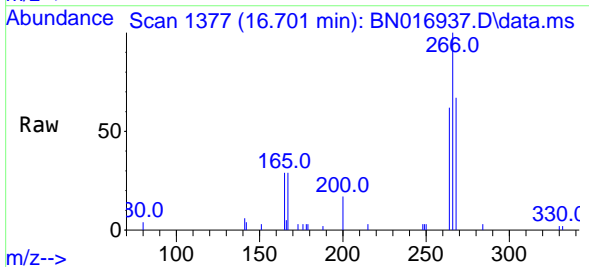
Instrument :
 BNA_N
 ClientSampled :
 PB139115BS



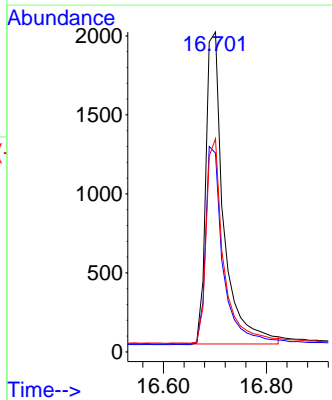
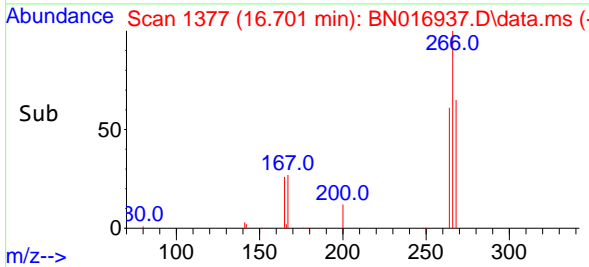
Tgt Ion:200 Resp: 10310
 Ion Ratio Lower Upper
 200 100
 173 22.7 18.0 27.0
 215 50.0 40.0 60.0

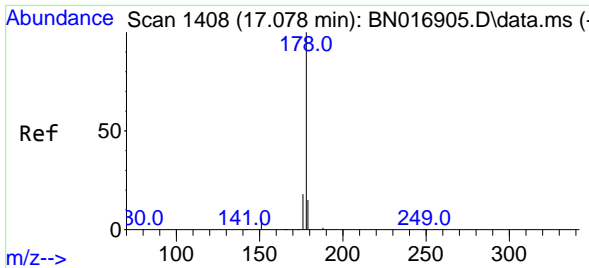


#24
 Pentachlorophenol
 Concen: 0.36 ng
 RT: 16.701 min Scan# 1377
 Delta R.T. 0.012 min
 Lab File: BN016937.D
 Acq: 13 Oct 2021 21:05



Tgt Ion:266 Resp: 4765
 Ion Ratio Lower Upper
 266 100
 264 62.9 50.5 75.7
 268 64.3 51.2 76.8

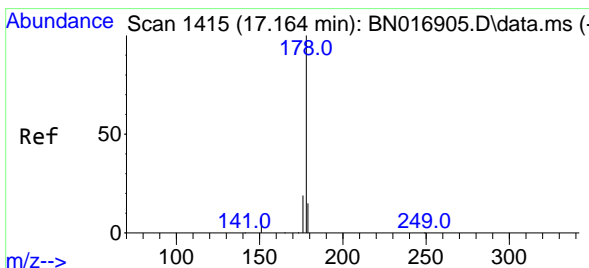
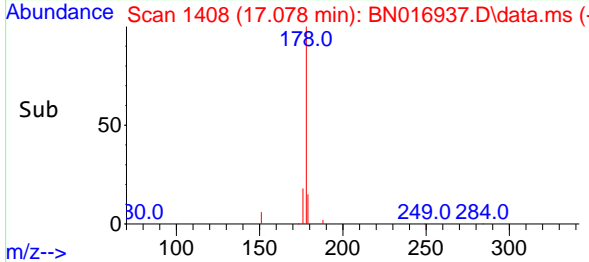
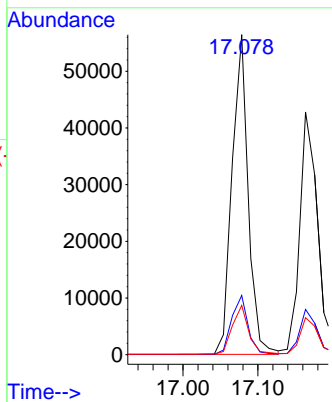
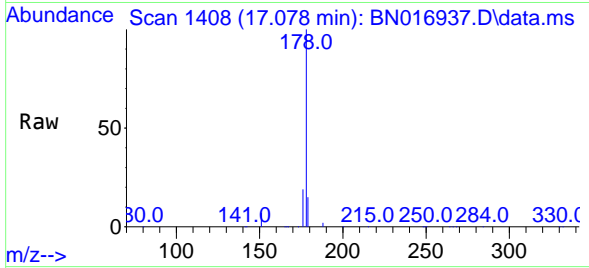




#25
 Phenanthrene
 Concen: 0.34 ng
 RT: 17.078 min Scan# 1408
 Delta R.T. -0.000 min
 Lab File: BN016937.D
 Acq: 13 Oct 2021 21:05

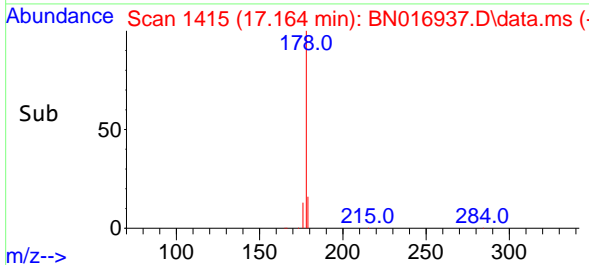
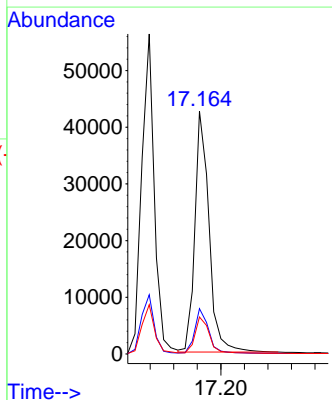
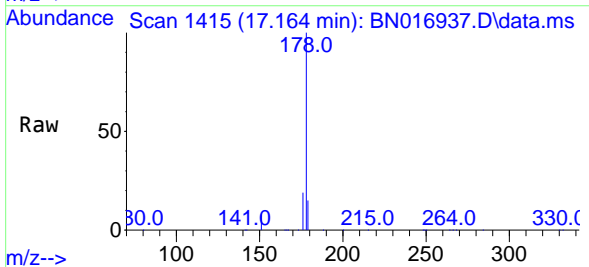
Instrument :
 BNA_N
 ClientSampled :
 PB139115BS

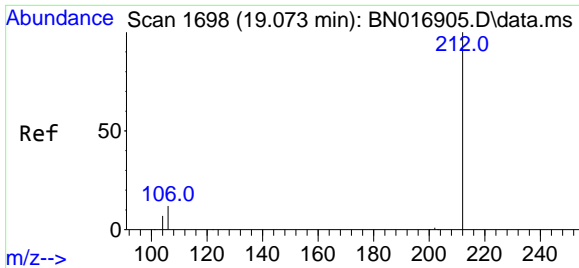
Tgt Ion	Resp	Lower	Upper
178	84446		
176	18.8	15.0	22.4
179	15.6	12.3	18.5



#26
 Anthracene
 Concen: 0.33 ng
 RT: 17.164 min Scan# 1415
 Delta R.T. -0.000 min
 Lab File: BN016937.D
 Acq: 13 Oct 2021 21:05

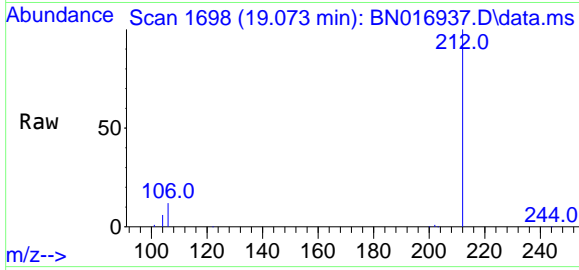
Tgt Ion	Resp	Lower	Upper
178	71357		
176	18.2	14.6	21.8
179	15.4	12.2	18.4





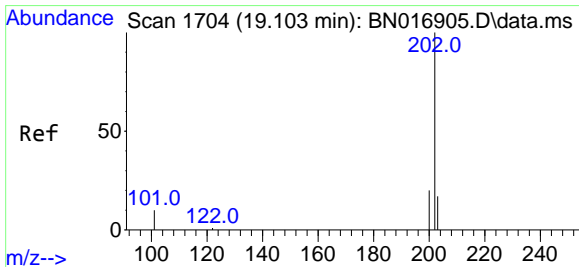
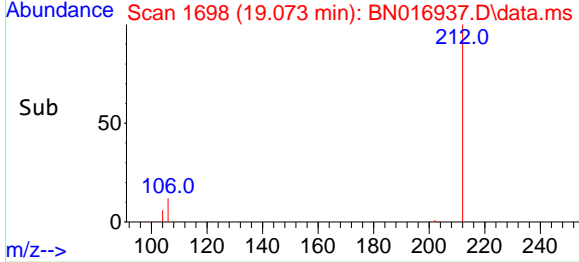
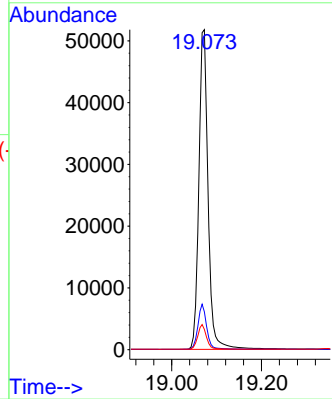
#27
 Fluoranthene-d10
 Concen: 0.34 ng
 RT: 19.073 min Scan# 1698
 Delta R.T. -0.000 min
 Lab File: BN016937.D
 Acq: 13 Oct 2021 21:05

Instrument :
 BNA_N
ClientSampled :
 PB139115BS

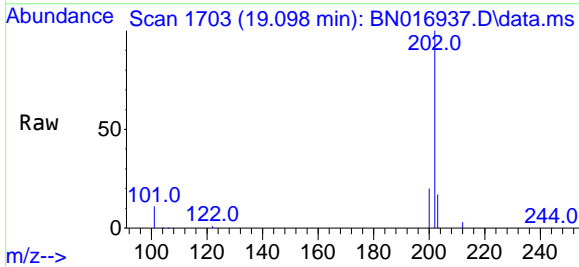


Tgt Ion: 212 Resp: 74333

Ion	Ratio	Lower	Upper
212	100		
106	13.5	10.7	16.1
104	7.4	5.8	8.8

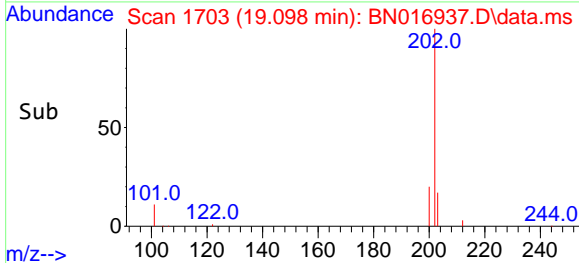
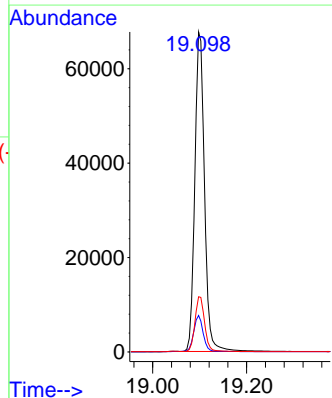


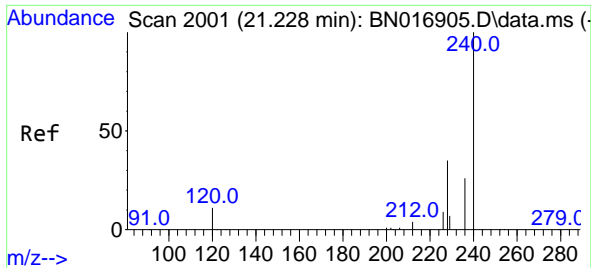
#28
 Fluoranthene
 Concen: 0.36 ng
 RT: 19.098 min Scan# 1703
 Delta R.T. -0.005 min
 Lab File: BN016937.D
 Acq: 13 Oct 2021 21:05



Tgt Ion: 202 Resp: 96724

Ion	Ratio	Lower	Upper
202	100		
101	11.3	9.0	13.4
203	17.3	13.8	20.8



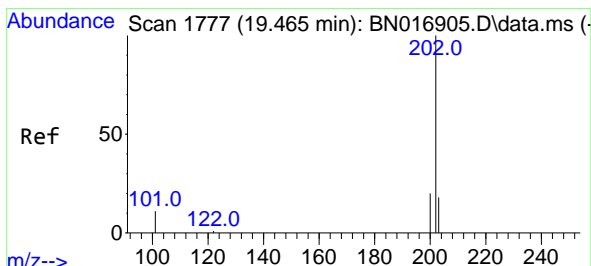
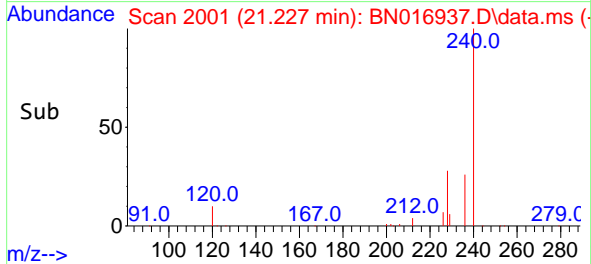
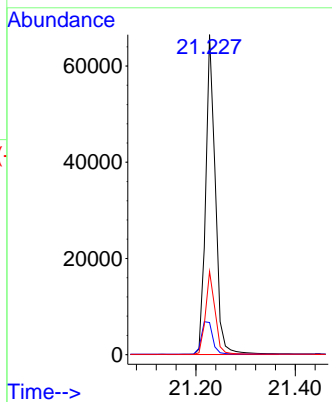
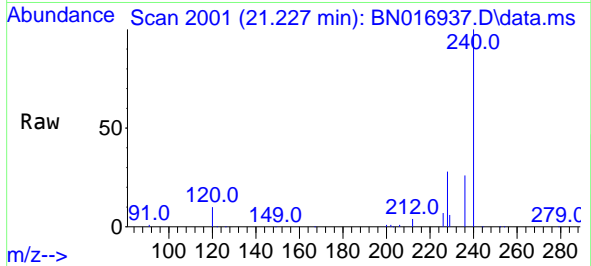


#29
 Chrysene-d12
 Concen: 0.40 ng
 RT: 21.227 min Scan# 2001
 Delta R.T. -0.000 min
 Lab File: BN016937.D
 Acq: 13 Oct 2021 21:05

Instrument :
 BNA_N
ClientSampled :
 PB139115BS

Tgt Ion:240 Resp: 89575

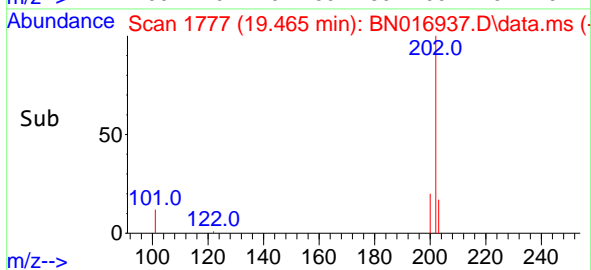
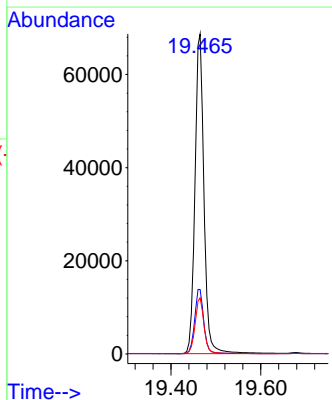
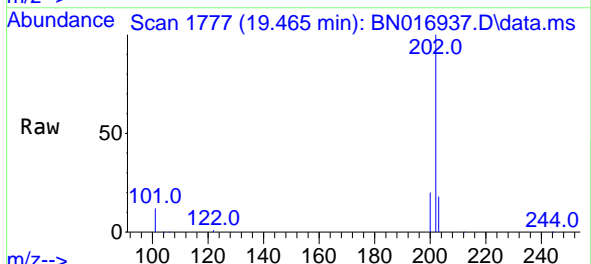
Ion	Ratio	Lower	Upper
240	100		
120	10.0	8.6	12.8
236	26.0	21.0	31.4

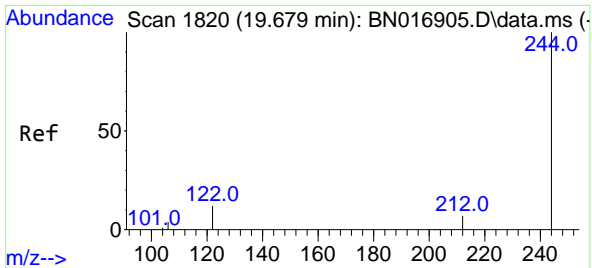


#30
 Pyrene
 Concen: 0.34 ng
 RT: 19.465 min Scan# 1777
 Delta R.T. -0.000 min
 Lab File: BN016937.D
 Acq: 13 Oct 2021 21:05

Tgt Ion:202 Resp: 96222

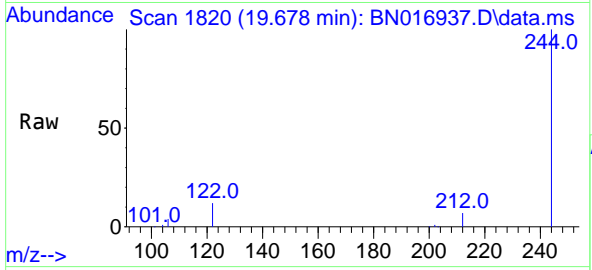
Ion	Ratio	Lower	Upper
202	100		
200	20.5	16.5	24.7
203	17.5	14.0	21.0





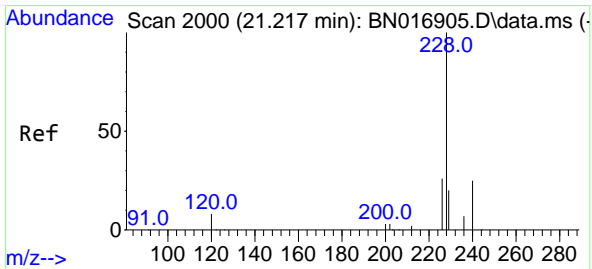
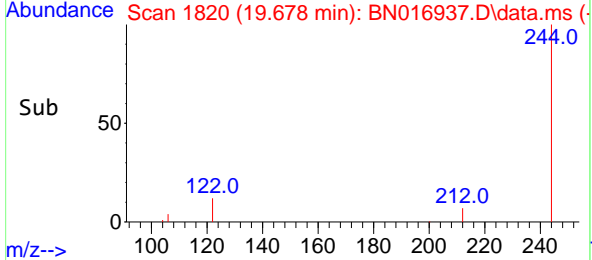
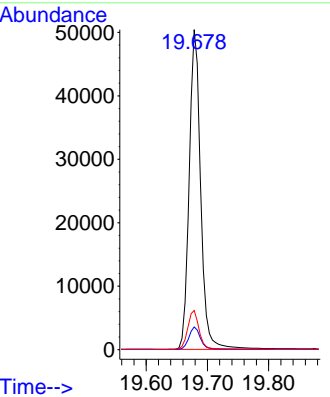
#31
 Terphenyl-d14
 Concen: 0.33 ng
 RT: 19.678 min Scan# 1820
 Delta R.T. -0.000 min
 Lab File: BN016937.D
 Acq: 13 Oct 2021 21:05

Instrument :
 BNA_N
ClientSampled :
 PB139115BS

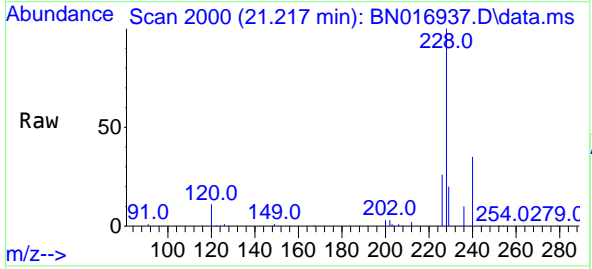


Tgt Ion:244 Resp: 65647

Ion	Ratio	Lower	Upper
244	100		
212	7.1	5.7	8.5
122	12.2	9.8	14.6

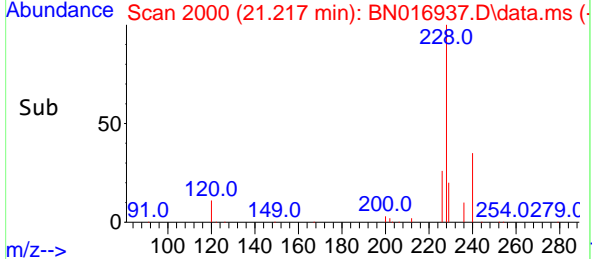
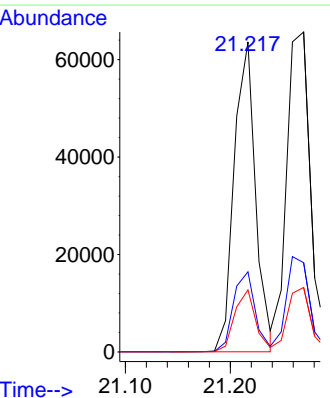


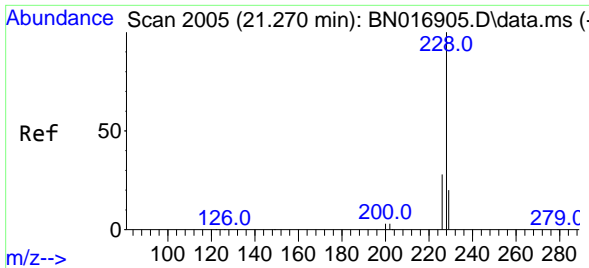
#32
 Benzo(a)anthracene
 Concen: 0.33 ng
 RT: 21.217 min Scan# 2000
 Delta R.T. -0.000 min
 Lab File: BN016937.D
 Acq: 13 Oct 2021 21:05



Tgt Ion:228 Resp: 90006

Ion	Ratio	Lower	Upper
228	100		
226	25.9	20.6	31.0
229	20.0	15.8	23.8



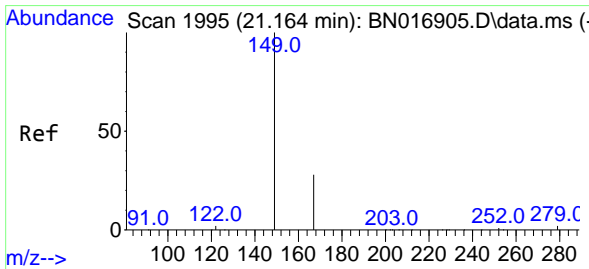
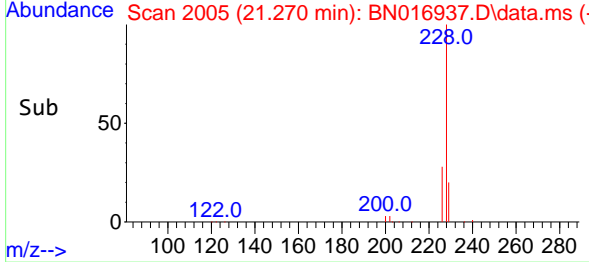
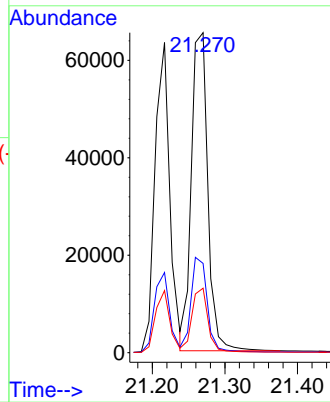
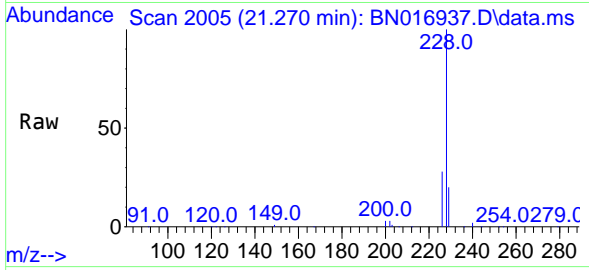


#33
 Chrysene
 Concen: 0.35 ng
 RT: 21.270 min Scan# 2005
 Delta R.T. -0.000 min
 Lab File: BN016937.D
 Acq: 13 Oct 2021 21:05

Instrument :
 BNA_N
 ClientSampled :
 PB139115BS

Tgt Ion:228 Resp: 102828

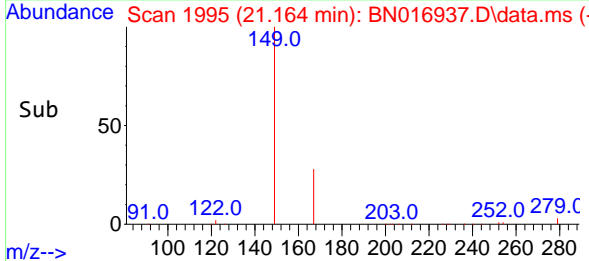
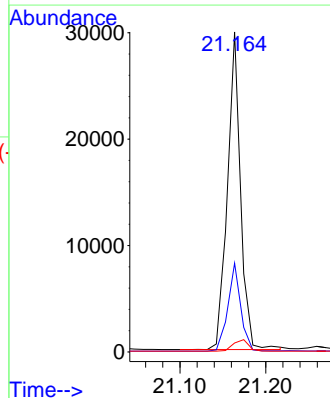
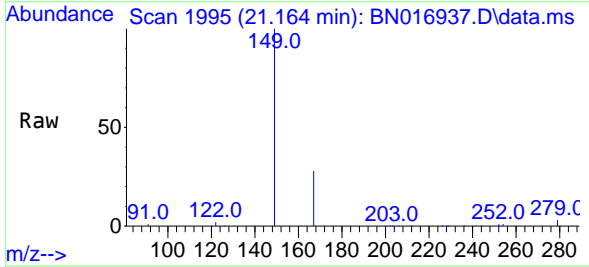
Ion	Ratio	Lower	Upper
228	100		
226	27.9	22.6	34.0
229	20.2	16.0	24.0

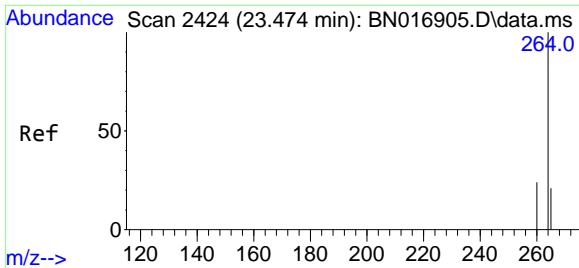


#34
 Bis(2-ethylhexyl)phthalate
 Concen: 0.38 ng
 RT: 21.164 min Scan# 1995
 Delta R.T. -0.000 min
 Lab File: BN016937.D
 Acq: 13 Oct 2021 21:05

Tgt Ion:149 Resp: 31708

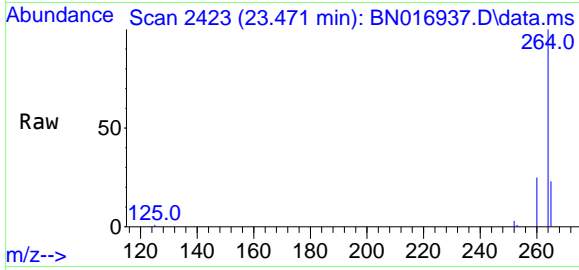
Ion	Ratio	Lower	Upper
149	100		
167	27.2	22.1	33.1
279	4.2	3.4	5.0



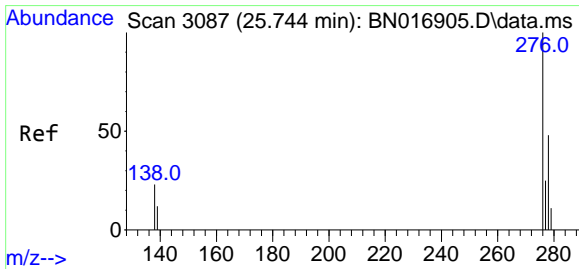
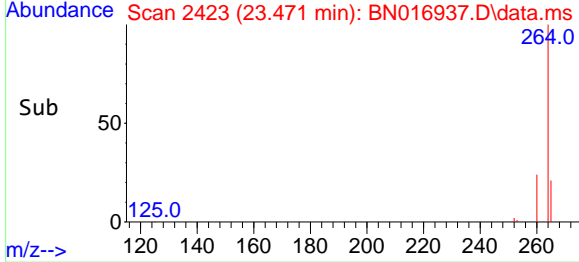
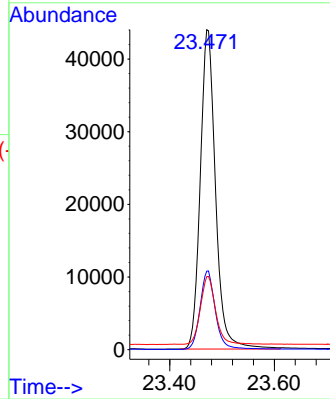


#35
 Perylene-d12
 Concen: 0.40 ng
 RT: 23.471 min Scan# 2423
 Delta R.T. -0.004 min
 Lab File: BN016937.D
 Acq: 13 Oct 2021 21:05

Instrument :
 BNA_N
ClientSampled :
 PB139115BS

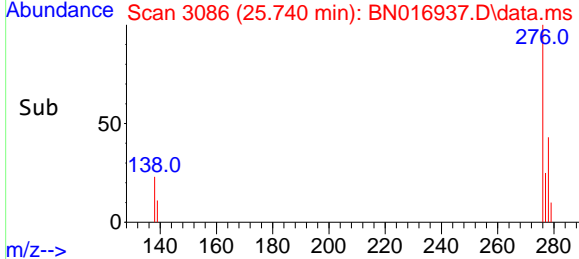
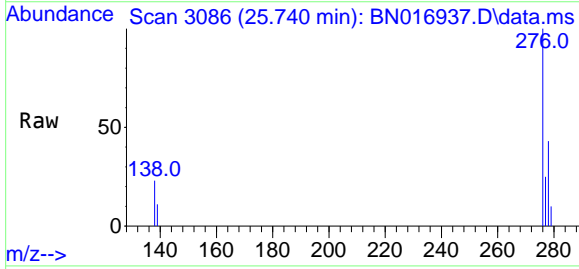
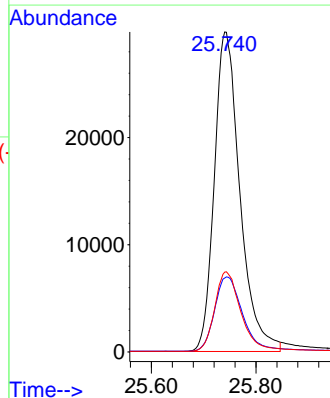


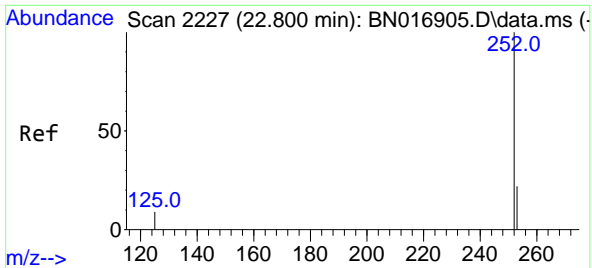
Tgt Ion:264 Resp: 89113
 Ion Ratio Lower Upper
 264 100
 260 24.6 19.4 29.2
 265 22.8 18.6 27.8



#36
 Indeno(1,2,3-cd)pyrene
 Concen: 0.30 ng
 RT: 25.740 min Scan# 3086
 Delta R.T. -0.004 min
 Lab File: BN016937.D
 Acq: 13 Oct 2021 21:05

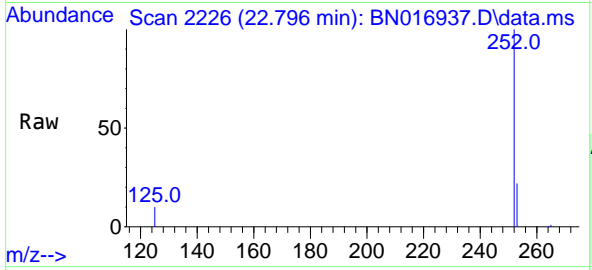
Tgt Ion:276 Resp: 101084
 Ion Ratio Lower Upper
 276 100
 138 25.2 20.2 30.4
 277 25.4 20.2 30.4





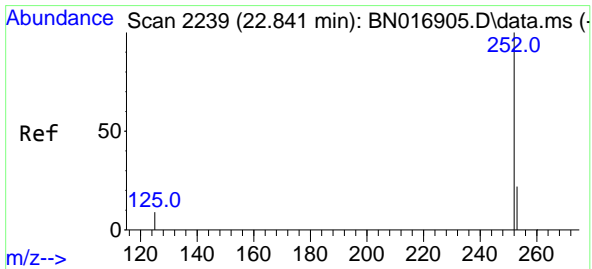
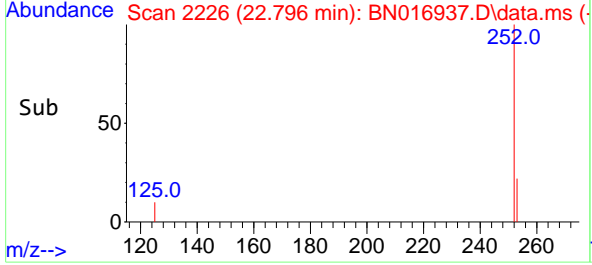
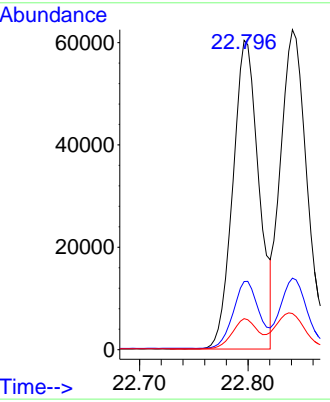
#37
 Benzo(b)fluoranthene
 Concen: 0.35 ng
 RT: 22.796 min Scan# 2226
 Delta R.T. -0.004 min
 Lab File: BN016937.D
 Acq: 13 Oct 2021 21:05

Instrument :
 BNA_N
ClientSampled :
 PB139115BS



Tgt Ion:252 Resp: 100303

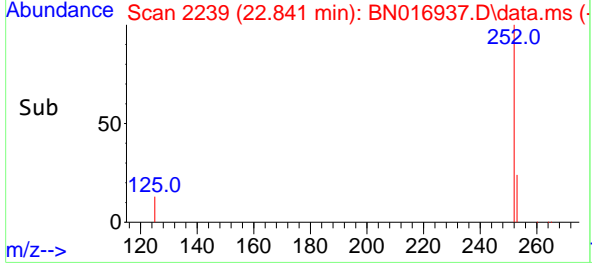
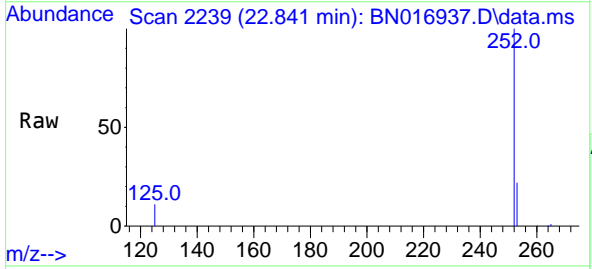
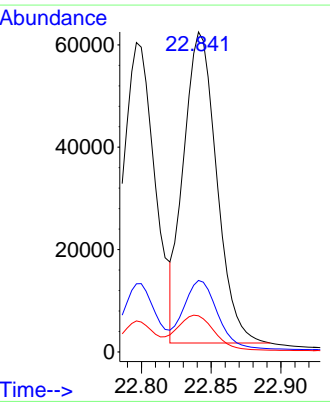
Ion	Ratio	Lower	Upper
252	100		
253	22.0	17.7	26.5
125	10.1	7.8	11.8

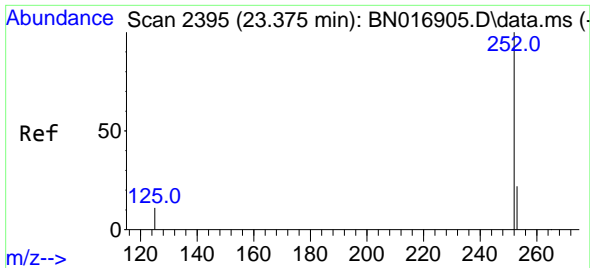


#38
 Benzo(k)fluoranthene
 Concen: 0.35 ng
 RT: 22.841 min Scan# 2239
 Delta R.T. -0.000 min
 Lab File: BN016937.D
 Acq: 13 Oct 2021 21:05

Tgt Ion:252 Resp: 100397

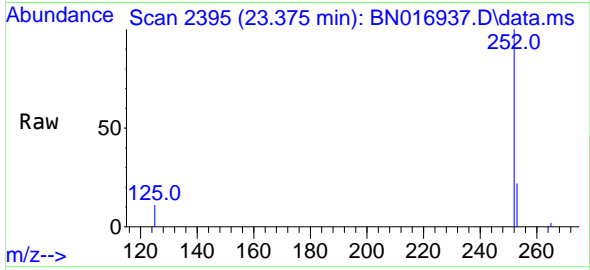
Ion	Ratio	Lower	Upper
252	100		
253	22.3	18.1	27.1
125	11.3	9.8	14.8



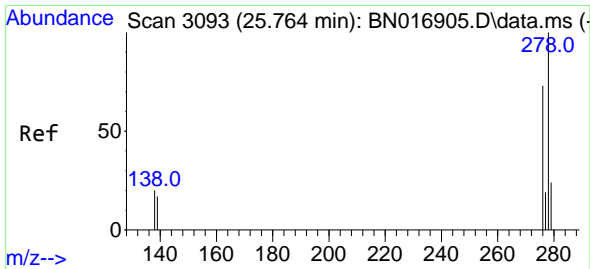
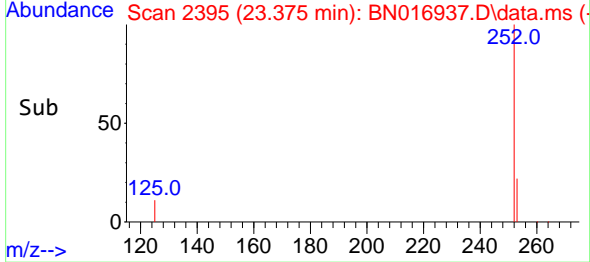
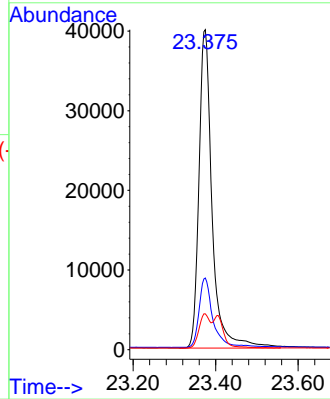


#39
 Benzo(a)pyrene
 Concen: 0.34 ng
 RT: 23.375 min Scan# 2395
 Delta R.T. -0.000 min
 Lab File: BN016937.D
 Acq: 13 Oct 2021 21:05

Instrument :
 BNA_N
ClientSampled :
 PB139115BS

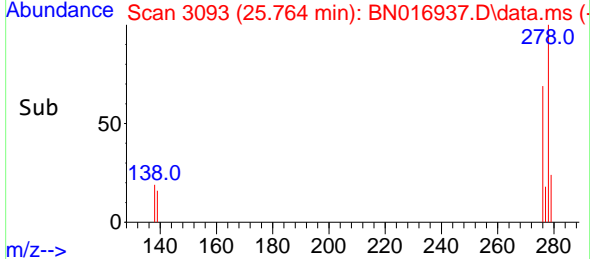
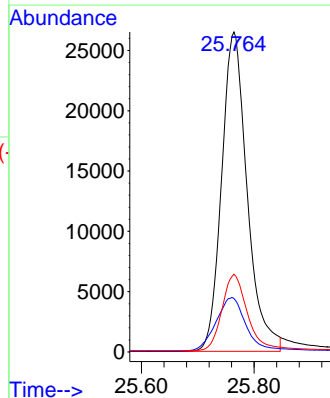
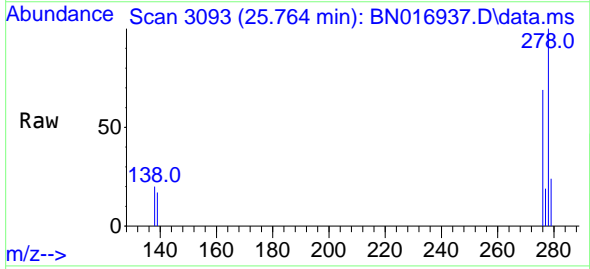


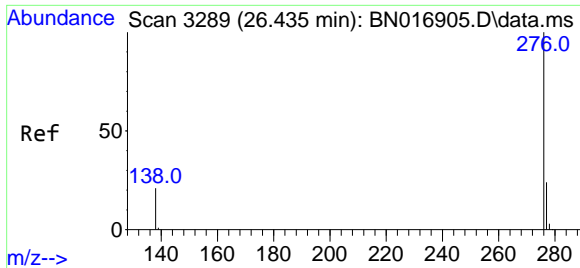
Tgt Ion:252 Resp: 88507
 Ion Ratio Lower Upper
 252 100
 253 22.4 18.1 27.1
 125 11.2 9.0 13.4



#40
 Dibenzo(a,h)anthracene
 Concen: 0.30 ng
 RT: 25.764 min Scan# 3093
 Delta R.T. -0.000 min
 Lab File: BN016937.D
 Acq: 13 Oct 2021 21:05

Tgt Ion:278 Resp: 83190
 Ion Ratio Lower Upper
 278 100
 139 16.7 13.8 20.6
 279 24.3 19.0 28.6





#41
 Benzo(g,h,i)perylene
 Concen: 0.28 ng
 RT: 26.435 min Scan# 3289
 Delta R.T. -0.000 min
 Lab File: BN016937.D
 Acq: 13 Oct 2021 21:05

Instrument :
 BNA_N
 ClientSampleId :
 PB139115BS

Tgt Ion: 276 Resp: 81818

Ion	Ratio	Lower	Upper
276	100		
277	23.8	19.1	28.7
138	20.8	16.6	24.8

