

Data Path : Z:\svoasrv\HPCHEM1\BNA_N\Data\BN111423\
 Data File : BN028615.D
 Acq On : 14 Nov 2023 23:09
 Operator : MA/JU
 Sample : 05337-16
 Misc :
 ALS Vial : 22 Sample Multiplier: 1

Instrument :
 BNA_N
 ClientSampleId :
 GCDK2

Integration Parameters: LSCINT.P

Integrator: RTE
 Smoothing : OFF Filtering: 5
 Sampling : 1 Min Area: 0.1 % of largest Peak
 Start Thrs: 0.2 Max Peaks: 100
 Stop Thrs : 0 Peak Location: TOP

If leading or trailing edge < 100 prefer < Baseline drop else tangent >
 Peak separation: 5

Method : Z:\svoasrv\HPCHEM1\BNA_N\Methods\SFAM-EPA-BN111423.MA.M
 Title : SVOA CALIBRATION

Signal : TIC: BN028615.D\data.ms

peak #	R.T. min	first scan	max scan	last scan	PK TY	peak height	corr. area	corr. % max.	% of total
1	3.116	3	5	8	rBV	49414	58574	0.13%	0.019%
2	3.581	80	84	97	rBV2	46032	145931	0.32%	0.048%
3	4.175	181	185	192	rBV	50181	81400	0.18%	0.027%
4	5.640	425	434	443	rBV	49543	84326	0.18%	0.028%
5	6.934	637	654	667	rBV4	39206	227341	0.49%	0.075%
6	7.040	667	672	698	rVV	308631	945362	2.06%	0.311%
7	7.234	698	705	735	rVV	423117	1144970	2.49%	0.377%
8	7.704	778	785	793	rBV	239657	613303	1.33%	0.202%
9	7.769	793	796	816	rVB	77375	240850	0.52%	0.079%
10	8.428	902	908	927	rBV2	184070	730487	1.59%	0.240%
11	8.863	976	982	1001	rBV	471446	1372129	2.98%	0.451%
12	8.992	1002	1004	1019	rVB3	38175	101337	0.22%	0.033%
13	9.292	1051	1055	1065	rVB3	21856	50760	0.11%	0.017%
14	9.581	1097	1104	1133	rBV	392668	1200311	2.61%	0.395%
15	10.116	1189	1195	1220	rBV	516188	1494125	3.25%	0.492%
16	10.486	1251	1258	1273	rBV	636237	1343697	2.92%	0.442%
17	10.645	1279	1285	1302	rBV	274104	1059089	2.30%	0.348%
18	10.781	1302	1308	1314	rVV2	126989	270076	0.59%	0.089%
19	10.939	1327	1335	1347	rVB4	235924	593204	1.29%	0.195%
20	11.033	1347	1351	1354	rBV3	32812	51803	0.11%	0.017%
21	11.098	1354	1362	1368	rVB3	125940	325093	0.71%	0.107%
22	11.281	1388	1393	1397	rBV3	42244	82194	0.18%	0.027%
23	11.369	1397	1408	1415	rVV3	370643	1169617	2.54%	0.385%
24	11.433	1415	1419	1423	rVV2	190643	353552	0.77%	0.116%
25	11.481	1423	1427	1443	rVB	215518	533183	1.16%	0.175%
26	11.663	1453	1458	1473	rVB5	36826	113098	0.25%	0.037%
27	11.786	1474	1479	1483	rVV2	38297	63228	0.14%	0.021%
28	11.845	1484	1489	1501	rVB	59474	128975	0.28%	0.042%
29	12.098	1527	1532	1539	rBV4	32427	92902	0.20%	0.031%
30	12.345	1571	1574	1588	rVB6	19338	57114	0.12%	0.019%
31	12.727	1630	1639	1648	rBV5	18512	57673	0.13%	0.019%
32	13.192	1711	1718	1724	rBV	692388	1030883	2.24%	0.339%
33	13.275	1724	1732	1745	rVB	297418	665006	1.45%	0.219%
34	13.663	1791	1798	1809	rBV2	67177	157697	0.34%	0.052%
35	13.769	1809	1816	1822	rBV	2422447	4445562	9.67%	1.463%
36	14.033	1851	1861	1877	rBV	3016376	5133395	11.16%	1.689%

Data Path : Z:\svoasrv\HPCHEM1\BNA_N\Data\BN111423\
 Data File : BN028615.D
 Acq On : 14 Nov 2023 23:09
 Operator : MA/JU
 Sample : 05337-16
 Misc :
 ALS Vial : 22 Sample Multiplier: 1

Instrument :
 BNA_N
 ClientSampleId :
 GCDK2

Integration Parameters: LSCINT.P

Integrator: RTE
 Smoothing : OFF Filtering: 5
 Sampling : 1 Min Area: 0.1 % of largest Peak
 Start Thrs: 0.2 Max Peaks: 100
 Stop Thrs : 0 Peak Location: TOP

If leading or trailing edge < 100 prefer < Baseline drop else tangent >
 Peak separation: 5

Method : Z:\svoasrv\HPCHEM1\BNA_N\Methods\SFAM-EPA-BN111423.MA.M
 Title : SVOA CALIBRATION

37	14.204	1882	1890	1898	rVB	681975	1219142	2.65%	0.401%
38	14.339	1907	1913	1928	rVB	1209602	1977316	4.30%	0.651%
39	14.498	1933	1940	1945	rBV	371732	720593	1.57%	0.237%
40	14.557	1945	1950	1961	rVV	296302	555309	1.21%	0.183%
41	14.645	1962	1965	1971	rVB2	31300	47098	0.10%	0.015%
42	14.951	2011	2017	2025	rVB3	70293	131181	0.29%	0.043%
43	15.139	2046	2049	2053	rBV	47050	68175	0.15%	0.022%
44	15.257	2063	2069	2075	rBV	325032	443163	0.96%	0.146%
45	15.339	2076	2083	2093	rBV	3406857	5366001	11.67%	1.766%
46	15.427	2094	2098	2100	rBV2	202798	243326	0.53%	0.080%
47	15.463	2100	2104	2108	rBV	639481	850718	1.85%	0.280%
48	15.504	2108	2111	2112	rBV	85942	99901	0.22%	0.033%
49	15.586	2122	2125	2131	rVB3	43976	65232	0.14%	0.021%
50	15.657	2131	2137	2144	rBV2	356021	745283	1.62%	0.245%
51	15.727	2144	2149	2153	rBV3	75004	154702	0.34%	0.051%
52	15.798	2153	2161	2164	rBV	3355410	5060069	11.01%	1.665%
53	15.827	2164	2166	2170	rVV	2034750	2298345	5.00%	0.756%
54	15.874	2170	2174	2178	rVB2	563909	754420	1.64%	0.248%
55	15.916	2178	2181	2187	rVB	300281	435162	0.95%	0.143%
56	15.998	2187	2195	2197	rBV2	349830	520200	1.13%	0.171%
57	16.098	2203	2212	2218	rBV	7370531	10267280	22.33%	3.378%
58	16.192	2221	2228	2232	rVV	18161612	28697896	62.42%	9.443%
59	16.257	2232	2239	2245	rVV2	21116430	45978245	100.00%	15.128%
60	16.316	2245	2249	2253	rVV2	18746394	31745334	69.04%	10.445%
61	16.357	2253	2256	2260	rVV	11409005	15374167	33.44%	5.059%
62	16.410	2260	2265	2267	rVV	6135730	9677462	21.05%	3.184%
63	16.457	2271	2273	2277	rVV	5353603	6664554	14.50%	2.193%
64	16.510	2277	2282	2289	rVV4	11370753	23857957	51.89%	7.850%
65	16.580	2289	2294	2298	rVV	17923066	28291021	61.53%	9.309%
66	16.621	2298	2301	2303	rVV	6784661	9606760	20.89%	3.161%
67	16.651	2303	2306	2313	rVB2	9671540	14376182	31.27%	4.730%
68	16.710	2313	2316	2322	rVB2	342989	503474	1.10%	0.166%
69	16.792	2323	2330	2333	rBV2	779101	1247060	2.71%	0.410%
70	16.857	2339	2341	2343	rBV	103137	93298	0.20%	0.031%
71	16.904	2343	2349	2354	rVV	1040745	1808867	3.93%	0.595%
72	16.951	2354	2357	2360	rVV	380294	557430	1.21%	0.183%
73	16.986	2360	2363	2366	rVV	547927	692401	1.51%	0.228%
74	17.015	2366	2368	2372	rVB	342848	403624	0.88%	0.133%
75	17.098	2373	2382	2390	rBV	1403676	2561370	5.57%	0.843%
76	17.192	2393	2398	2415	rVB2	3600202	5512923	11.99%	1.814%

Data Path : Z:\svoasrv\HPCHEM1\BNA_N\Data\BN111423\
 Data File : BN028615.D
 Acq On : 14 Nov 2023 23:09
 Operator : MA/JU
 Sample : 05337-16
 Misc :
 ALS Vial : 22 Sample Multiplier: 1

Instrument :
 BNA_N
 ClientSampleId :
 GCDK2

Integration Parameters: LSCINT.P

Integrator: RTE
 Smoothing : OFF Filtering: 5
 Sampling : 1 Min Area: 0.1 % of largest Peak
 Start Thrs: 0.2 Max Peaks: 100
 Stop Thrs : 0 Peak Location: TOP

If leading or trailing edge < 100 prefer < Baseline drop else tangent >
 Peak separation: 5

Method : Z:\svoasrv\HPCHEM1\BNA_N\Methods\SFAM-EPA-BN111423.MA.M
 Title : SVOA CALIBRATION

77	17.310	2415	2418	2422	rBV	108126	126660	0.28%	0.042%
78	17.415	2434	2436	2442	rVB3	54893	77997	0.17%	0.026%
79	17.774	2493	2497	2502	rBV	202361	245054	0.53%	0.081%
80	18.010	2534	2537	2546	rBV2	116974	232837	0.51%	0.077%
81	18.751	2660	2663	2673	rBV3	133854	339452	0.74%	0.112%
82	19.498	2784	2790	2799	rBV	4471300	6481880	14.10%	2.133%
83	21.304	3093	3097	3102	rBV	1293437	1703813	3.71%	0.561%
84	22.392	3279	3282	3294	rBV2	449230	692481	1.51%	0.228%
85	23.450	3456	3462	3471	rBV2	3057652	6006318	13.06%	1.976%
86	23.598	3482	3487	3498	rVB	1034639	2124625	4.62%	0.699%

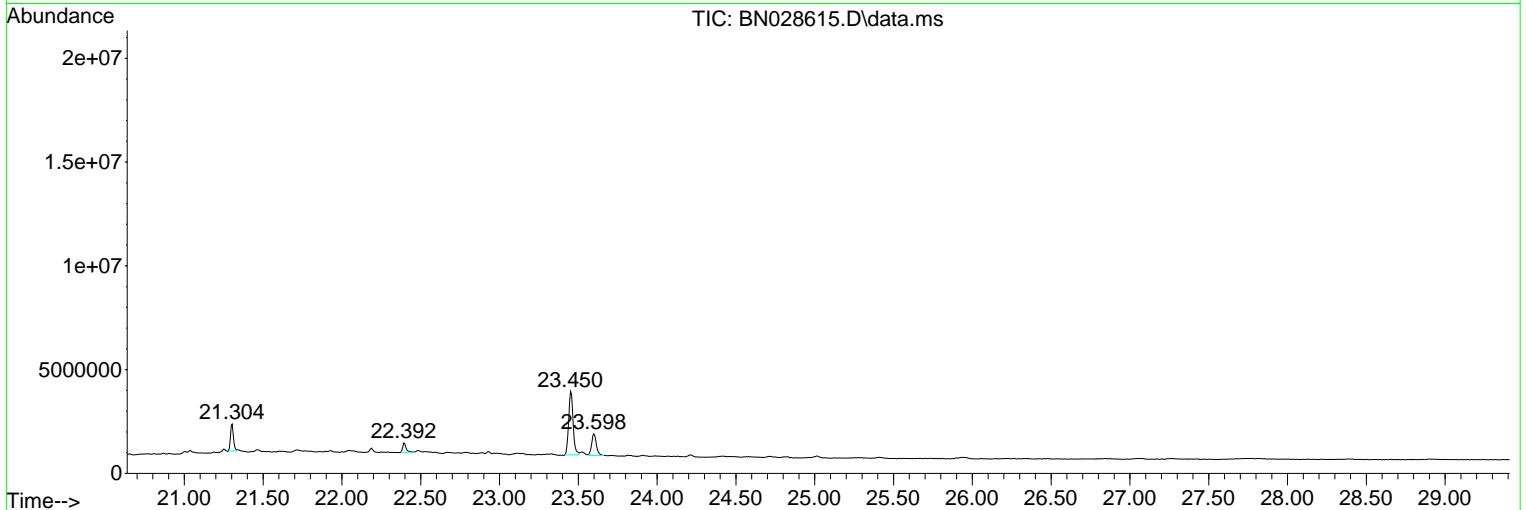
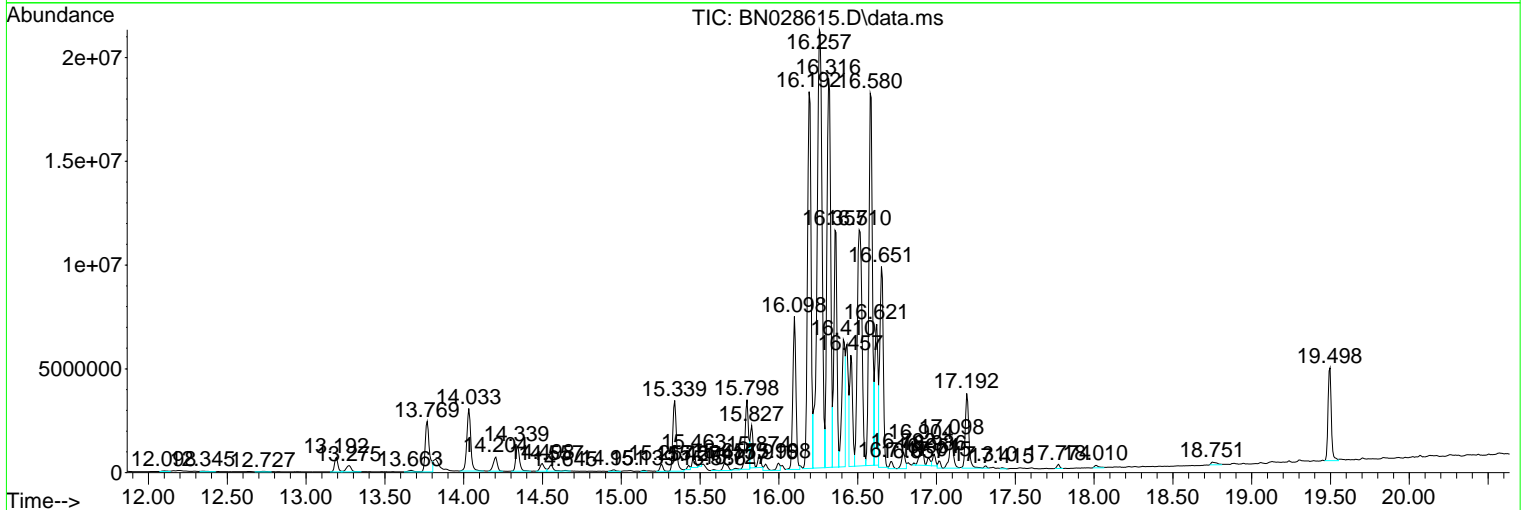
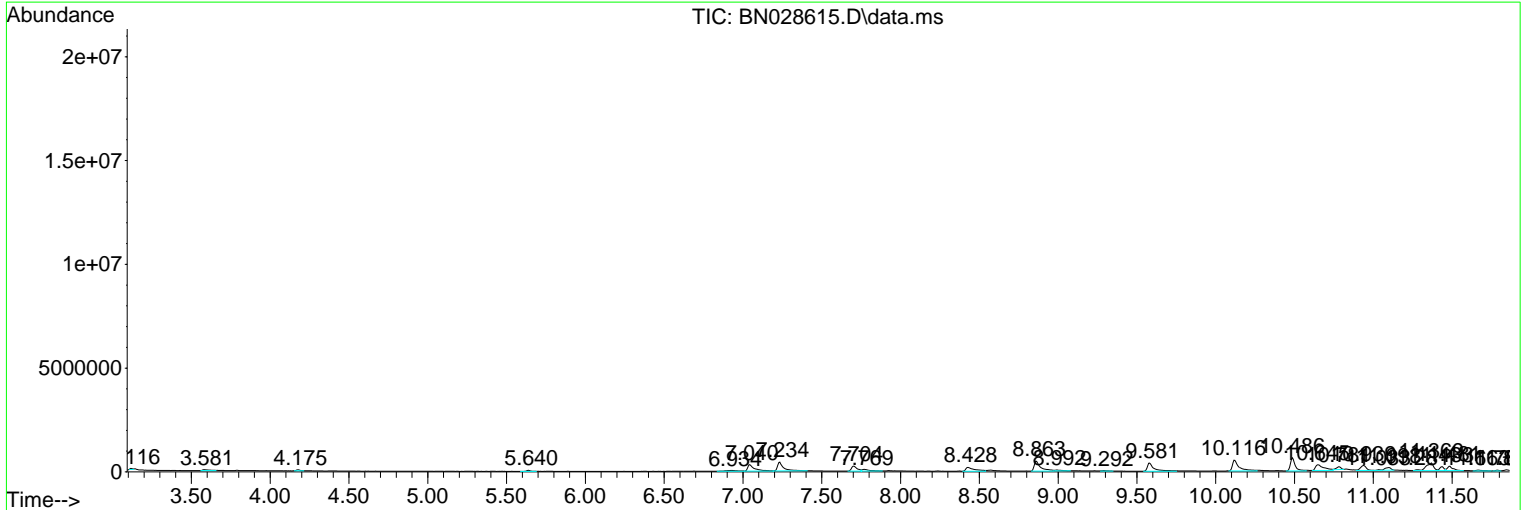
Sum of corrected areas: 303922005

Data Path : Z:\svoasrv\HPCHEM1\BNA_N\Data\BN111423\
 Data File : BN028615.D
 Acq On : 14 Nov 2023 23:09
 Operator : MA/JU
 Sample : 05337-16
 Misc :
 ALS Vial : 22 Sample Multiplier: 1

Instrument :
 BNA_N
ClientSampleId :
 GCDK2

Quant Method : Z:\svoasrv\HPCHEM1\BNA_N\Methods\SFAM-EPA-BN111423.MA.M
 Quant Title : SVOA CALIBRATION

TIC Library : C:\Database\NIST20.L
 TIC Integration Parameters: LSCINT.P



Data Path : Z:\svoasrv\HPCHEM1\BNA_N\Data\BN111423\
 Data File : BN028615.D
 Acq On : 14 Nov 2023 23:09
 Operator : MA/JU
 Sample : 05337-16
 Misc :
 ALS Vial : 22 Sample Multiplier: 1

Instrument :
 BNA_N
 ClientSampleId :
 GCDK2

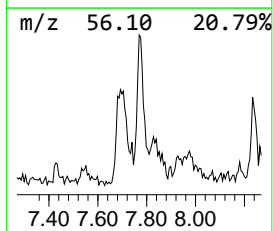
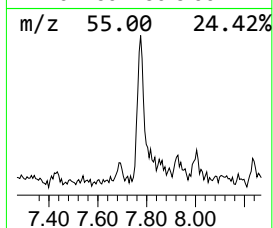
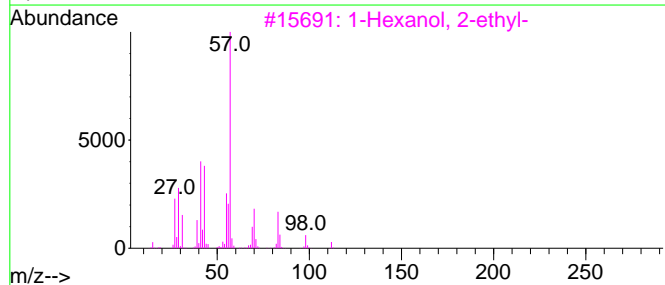
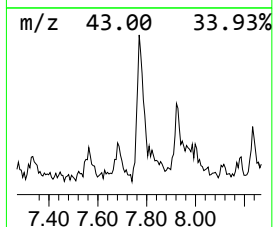
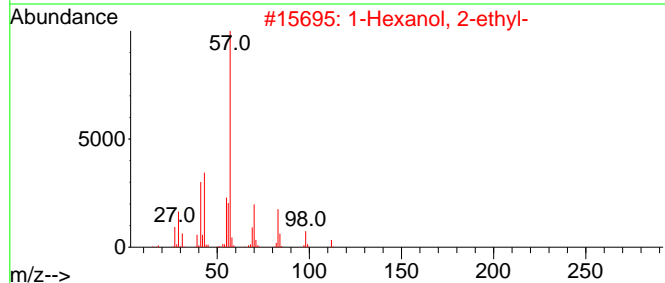
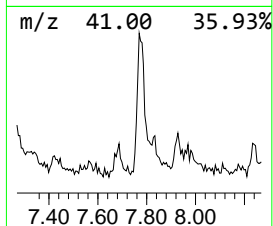
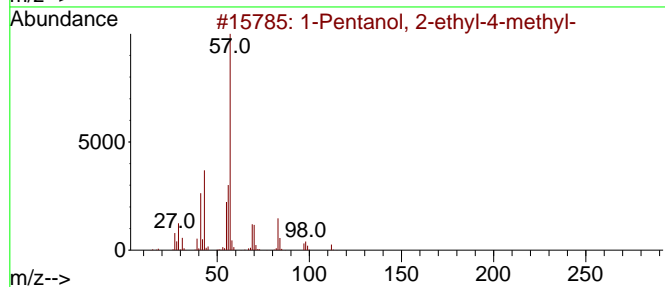
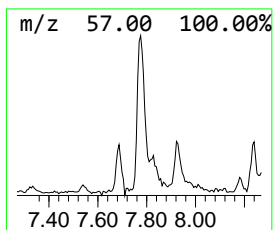
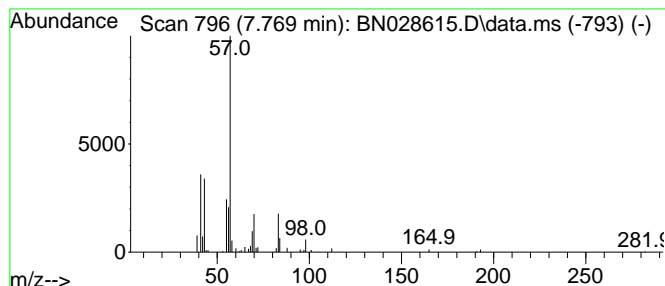
Quant Method : Z:\svoasrv\HPCHEM1\BNA_N\Methods\SFAM-EPA-BN111423.MA.M
 Quant Title : SVOA CALIBRATION

TIC Library : C:\Database\NIST20.L
 TIC Integration Parameters: LSCINT.P

 Peak Number 3 1-Pentanol, 2-ethyl-4-methyl- Concentration Rank 22

R.T.	EstConc	Area	Relative to ISTD	R.T.
7.769	7.85 ng/ul	240850	1,4-Dichlorobenzene-d4	7.704

Hit#	of	5	Tentative ID	MW	MolForm	CAS#	Qual
1			1-Pentanol, 2-ethyl-4-methyl-	130	C8H18O	000106-67-2	83
2			1-Hexanol, 2-ethyl-	130	C8H18O	000104-76-7	78
3			1-Hexanol, 2-ethyl-	130	C8H18O	000104-76-7	78
4			Carbonic acid, heptyl vinyl ester	186	C10H18O3	1010383-25-4	59
5			1-Hexanol, 2-ethyl-	130	C8H18O	000104-76-7	50



Data Path : Z:\svoasrv\HPCHEM1\BNA_N\Data\BN111423\
 Data File : BN028615.D
 Acq On : 14 Nov 2023 23:09
 Operator : MA/JU
 Sample : 05337-16
 Misc :
 ALS Vial : 22 Sample Multiplier: 1

Instrument :
 BNA_N
 ClientSampleId :
 GCDK2

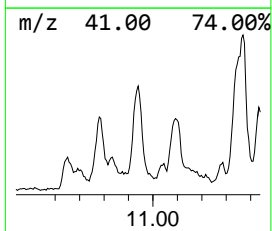
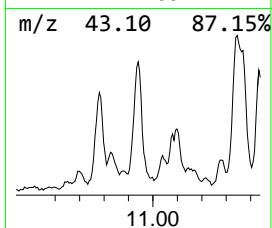
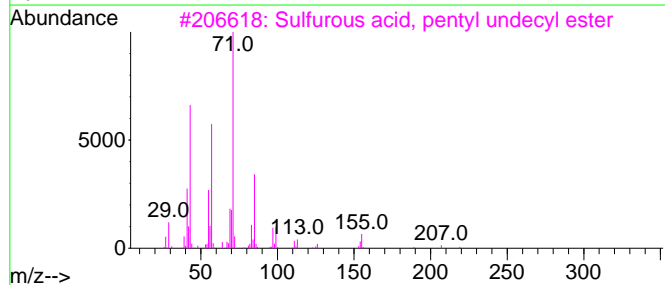
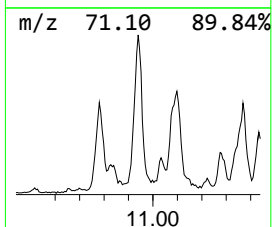
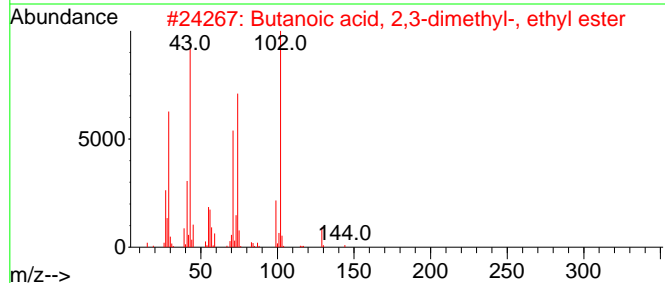
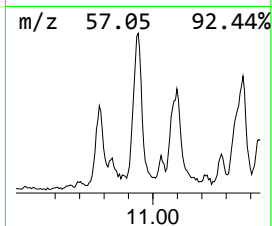
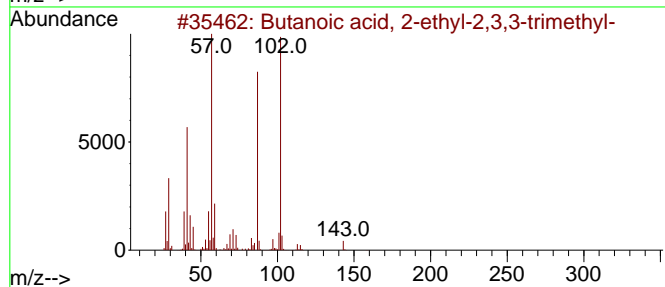
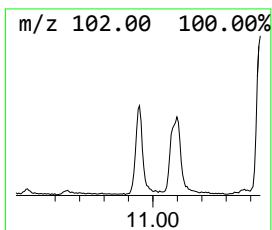
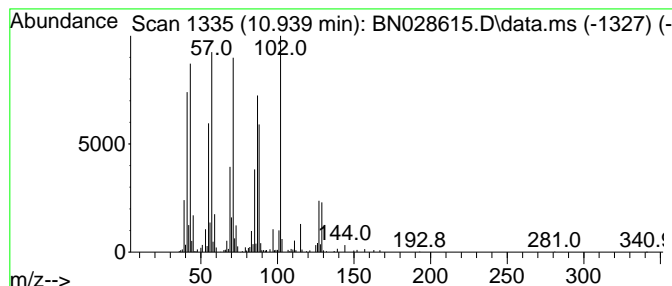
Quant Method : Z:\svoasrv\HPCHEM1\BNA_N\Methods\SFAM-EPA-BN111423.MA.M
 Quant Title : SVOA CALIBRATION

TIC Library : C:\Database\NIST20.L
 TIC Integration Parameters: LSCINT.P

 Peak Number 6 unknown-01 Concentration Rank 19

R.T.	EstConc	Area	Relative to ISTD	R.T.
10.939	8.83 ng/ul	593204	Naphthalene-d8	10.486

Hit#	of	5	Tentative ID	MW	MolForm	CAS#	Qual
1			Butanoic acid, 2-ethyl-2,3,3-tri...	158	C9H18O2	038541-67-2	35
2			Butanoic acid, 2,3-dimethyl-, et...	144	C8H16O2	054004-42-1	30
3			Sulfurous acid, pentyl undecyl e...	306	C16H34O3S	1000309-14-4	25
4			Nonane, 3-methyl-5-propyl-	184	C13H28	031081-18-2	22
5			Nonane, 1-iodo-	254	C9H19I	004282-42-2	22



Data Path : Z:\svoasrv\HPCHEM1\BNA_N\Data\BN111423\
 Data File : BN028615.D
 Acq On : 14 Nov 2023 23:09
 Operator : MA/JU
 Sample : 05337-16
 Misc :
 ALS Vial : 22 Sample Multiplier: 1

Instrument :
 BNA_N
 ClientSampleId :
 GCDK2

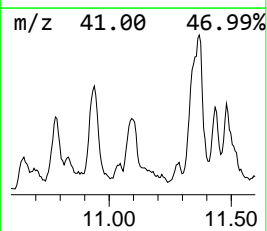
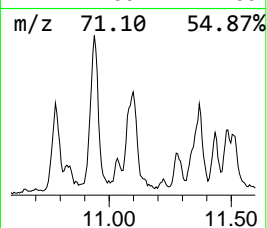
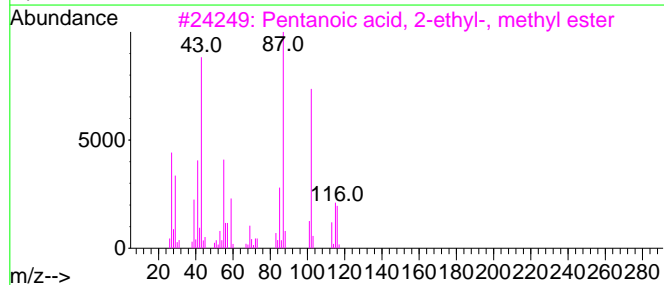
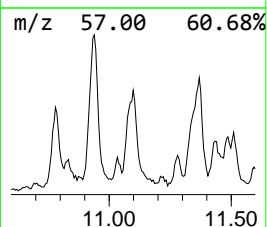
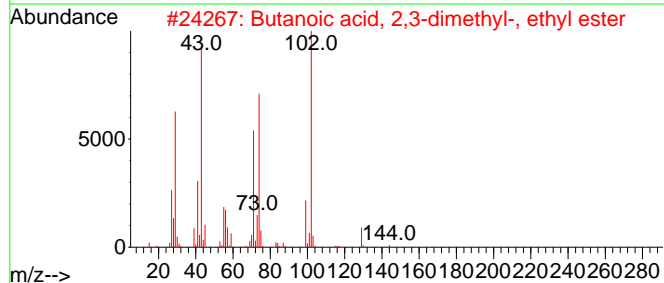
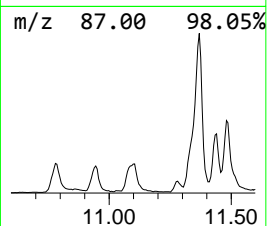
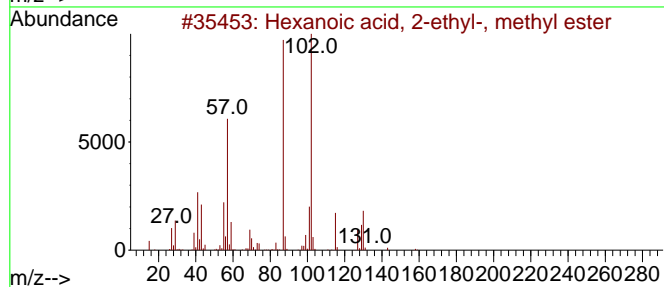
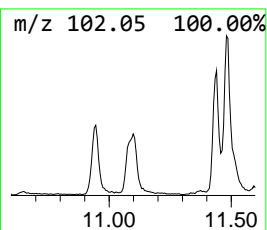
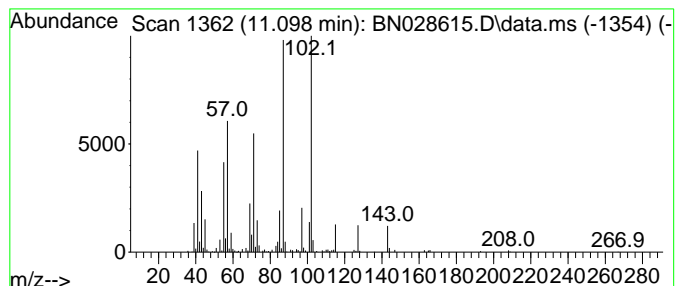
Quant Method : Z:\svoasrv\HPCHEM1\BNA_N\Methods\SFAM-EPA-BN111423.MA.M
 Quant Title : SVOA CALIBRATION

TIC Library : C:\Database\NIST20.L
 TIC Integration Parameters: LSCINT.P

 Peak Number 7 Hexanoic acid, 2-ethyl-, me... Concentration Rank 30

R.T.	EstConc	Area	Relative to ISTD	R.T.
11.098	4.84 ng/ul	325093	Naphthalene-d8	10.486

Hit#	of	5	Tentative ID	MW	MolForm	CAS#	Qual
1			Hexanoic acid, 2-ethyl-, methyl ...	158	C9H18O2	000816-19-3	50
2			Butanoic acid, 2,3-dimethyl-, et...	144	C8H16O2	054004-42-1	38
3			Pentanoic acid, 2-ethyl-, methyl...	144	C8H16O2	000816-16-0	22
4			2-[2-[2-[2-[2-[2-[2-(2-Ace...	542	C24H46O13	1000351-90-4	14
5			1,3-Dioxolane-2-propanol, 2-meth...	188	C9H16O4	029021-95-2	14



Data Path : Z:\svoasrv\HPCHEM1\BNA_N\Data\BN111423\
 Data File : BN028615.D
 Acq On : 14 Nov 2023 23:09
 Operator : MA/JU
 Sample : 05337-16
 Misc :
 ALS Vial : 22 Sample Multiplier: 1

Instrument :
 BNA_N
 ClientSampleId :
 GCDK2

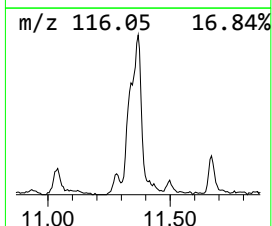
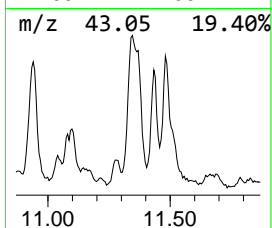
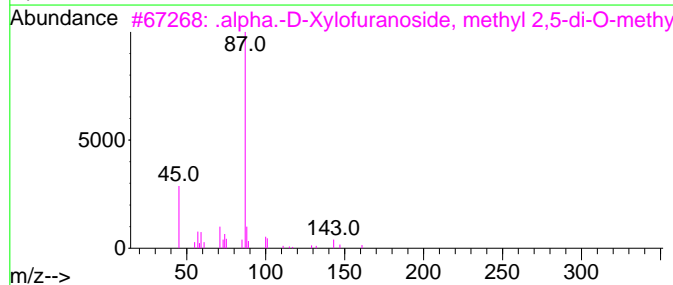
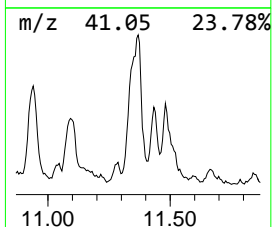
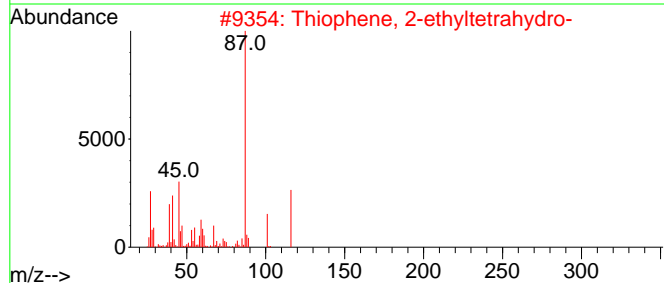
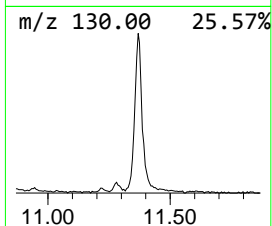
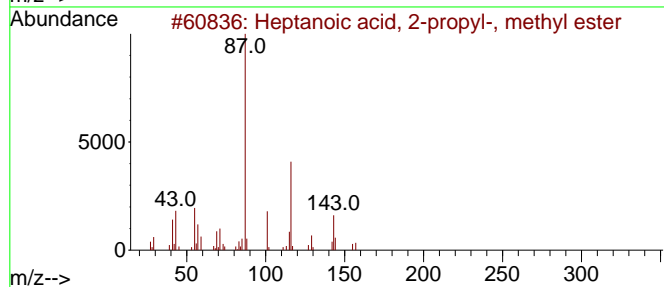
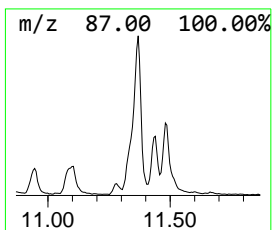
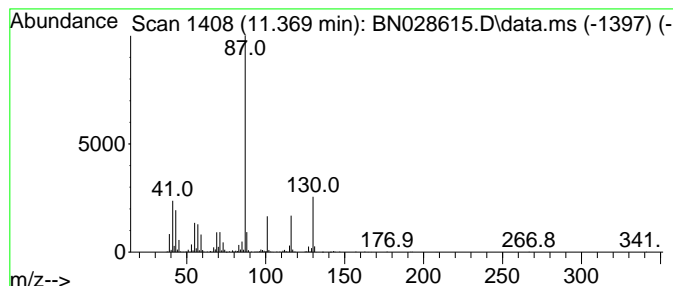
Quant Method : Z:\svoasrv\HPCHEM1\BNA_N\Methods\SFAM-EPA-BN111423.MA.M
 Quant Title : SVOA CALIBRATION

TIC Library : C:\Database\NIST20.L
 TIC Integration Parameters: LSCINT.P

 Peak Number 8 Heptanoic acid, 2-propyl-, ... Concentration Rank 14

R.T.	EstConc	Area	Relative to ISTD	R.T.
11.369	17.41 ng/ul	1169620	Naphthalene-d8	10.486

Hit#	of	5	Tentative ID	MW	MolForm	CAS#	Qual
1			Heptanoic acid, 2-propyl-, methy...	186	C11H22O2	056247-53-1	59
2			Thiophene, 2-ethyltetrahydro-	116	C6H12S	001551-32-2	59
3			.alpha.-D-Xylofuranoside, methyl...	192	C8H16O5	035007-52-4	53
4			Thiophane, propyl-	130	C7H14S	001551-34-4	53
5			Thiophane, propyl-	130	C7H14S	001551-34-4	45



Data Path : Z:\svoasrv\HPCHEM1\BNA_N\Data\BN111423\
 Data File : BN028615.D
 Acq On : 14 Nov 2023 23:09
 Operator : MA/JU
 Sample : 05337-16
 Misc :
 ALS Vial : 22 Sample Multiplier: 1

Instrument :
 BNA_N
 ClientSampleId :
 GCDK2

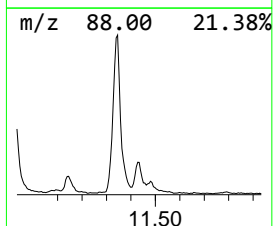
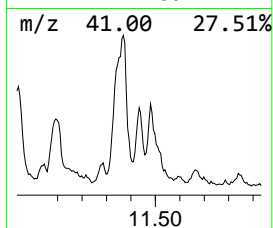
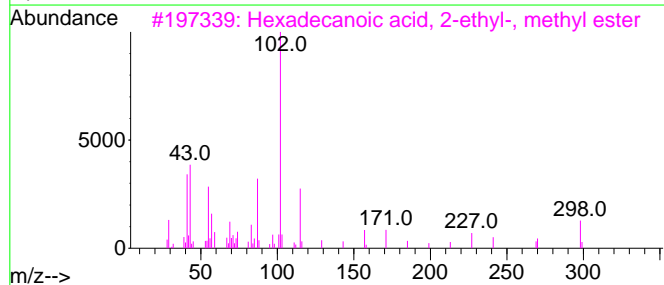
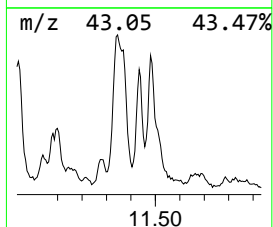
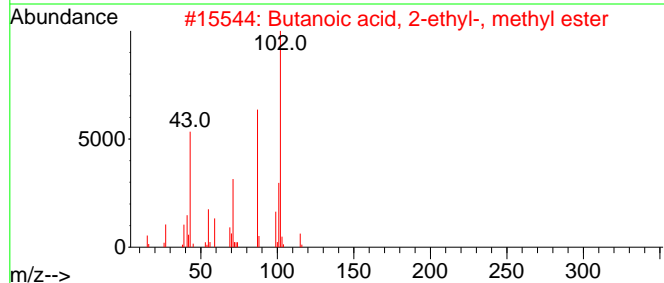
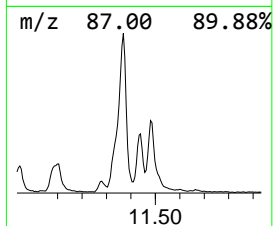
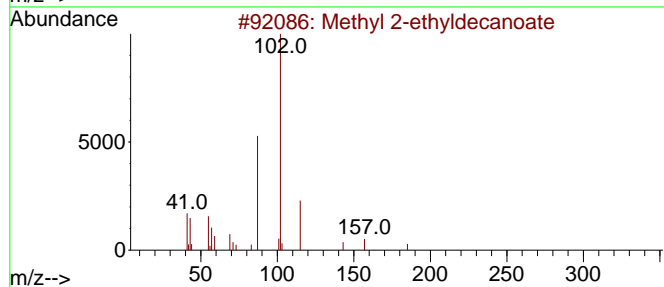
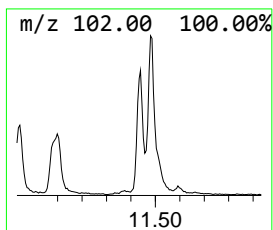
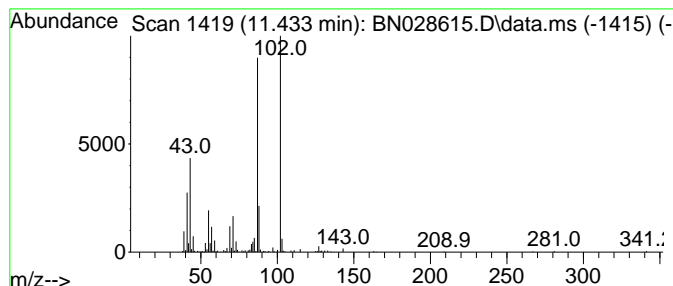
Quant Method : Z:\svoasrv\HPCHEM1\BNA_N\Methods\SFAM-EPA-BN111423.MA.M
 Quant Title : SVOA CALIBRATION

TIC Library : C:\Database\NIST20.L
 TIC Integration Parameters: LSCINT.P

 Peak Number 9 unknown-02 Concentration Rank 29

R.T.	EstConc	Area	Relative to ISTD	R.T.
11.433	5.26 ng/ul	353552	Naphthalene-d8	10.486

Hit#	of	5	Tentative ID	MW	MolForm	CAS#	Qual
1			Methyl 2-ethyldecanoate	214	C13H26O2	020483-47-0	40
2			Butanoic acid, 2-ethyl-, methyl ...	130	C7H14O2	000816-11-5	38
3			Hexadecanoic acid, 2-ethyl-, met...	298	C19H38O2	054833-54-4	37
4			Uridine, 2'-O-methyl-	258	C10H14N2O6	002140-76-3	23
5			Heptanoic acid, 2-propyl-, methy...	186	C11H22O2	056247-53-1	17



Data Path : Z:\svoasrv\HPCHEM1\BNA_N\Data\BN111423\
 Data File : BN028615.D
 Acq On : 14 Nov 2023 23:09
 Operator : MA/JU
 Sample : 05337-16
 Misc :
 ALS Vial : 22 Sample Multiplier: 1

Instrument :
 BNA_N
 ClientSampleId :
 GCDK2

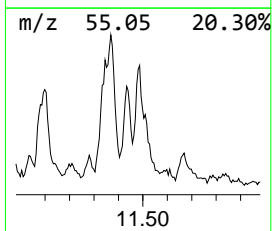
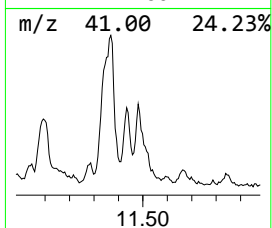
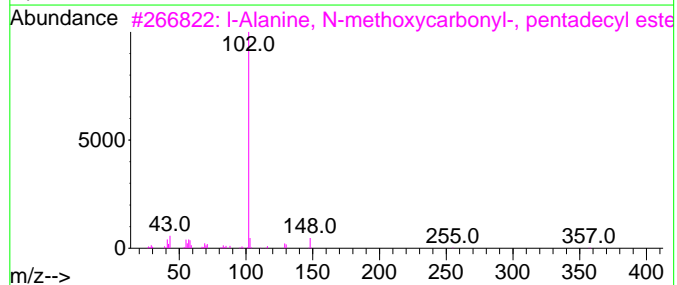
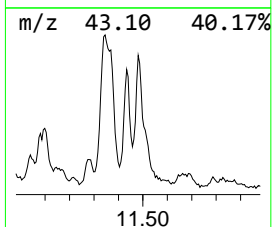
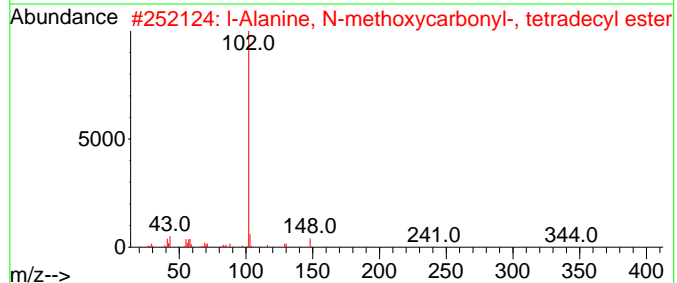
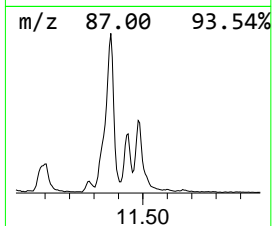
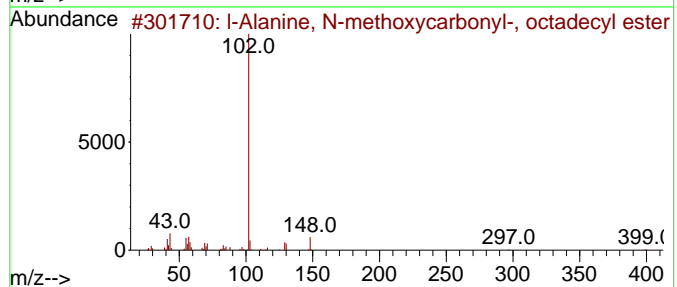
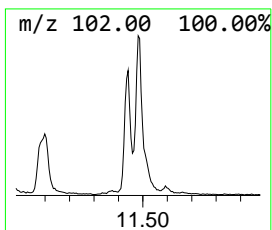
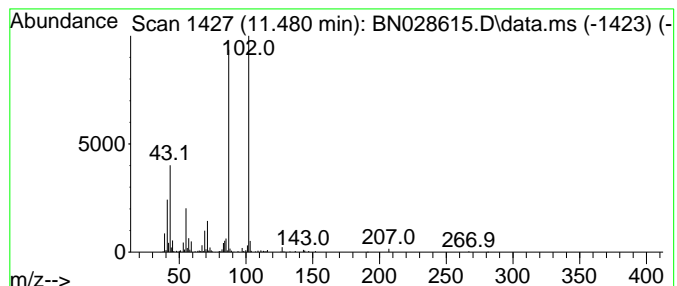
Quant Method : Z:\svoasrv\HPCHEM1\BNA_N\Methods\SFAM-EPA-BN111423.MA.M
 Quant Title : SVOA CALIBRATION

TIC Library : C:\Database\NIST20.L
 TIC Integration Parameters: LSCINT.P

 Peak Number 10 unknown-03 Concentration Rank 21

R.T.	EstConc	Area	Relative to ISTD	R.T.
11.480	7.94 ng/ul	533183	Naphthalene-d8	10.486

Hit#	of 5	Tentative ID	MW	MolForm	CAS#	Qual
1		l-Alanine, N-methoxycarbonyl-, o...	399	C23H45NO4	1000313-38-6	43
2		l-Alanine, N-methoxycarbonyl-, t...	343	C19H37NO4	1000313-38-2	32
3		l-Alanine, N-methoxycarbonyl-, p...	357	C20H39NO4	1000313-38-3	25
4		1,3-Dioxolane, 2-butyl-4-methyl-	144	C8H16O2	074094-60-3	25
5		l-Alanine, N-methoxycarbonyl-, t...	329	C18H35NO4	1010313-38-1	25



Data Path : Z:\svoasrv\HPCHEM1\BNA_N\Data\BN111423\
 Data File : BN028615.D
 Acq On : 14 Nov 2023 23:09
 Operator : MA/JU
 Sample : 05337-16
 Misc :
 ALS Vial : 22 Sample Multiplier: 1

Instrument :
 BNA_N
 ClientSampleId :
 GCDK2

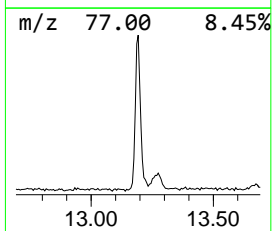
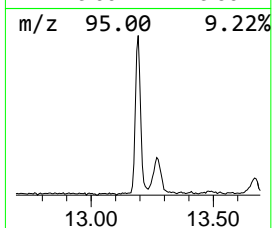
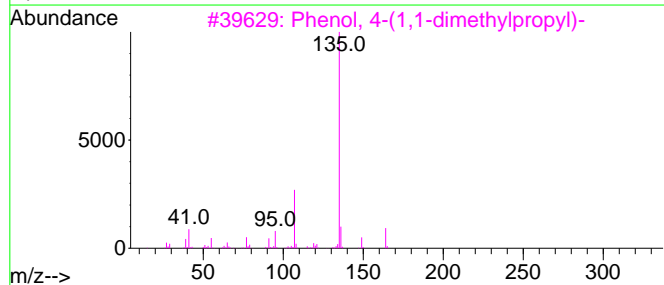
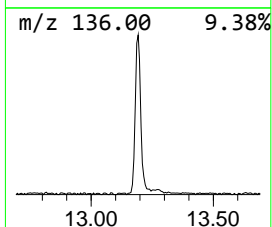
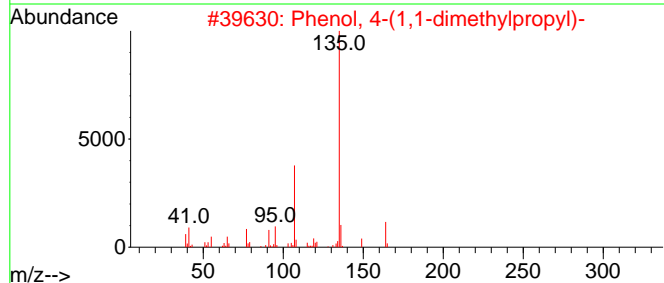
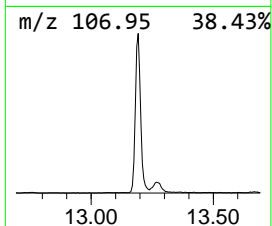
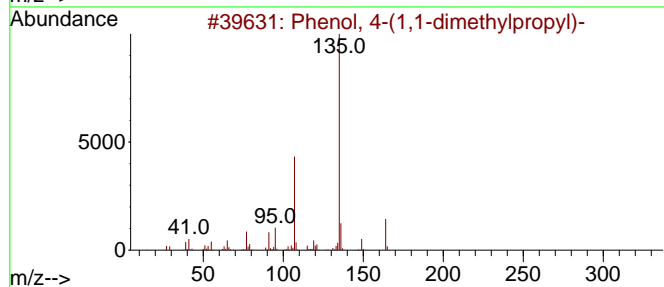
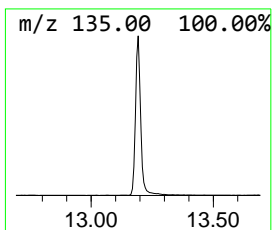
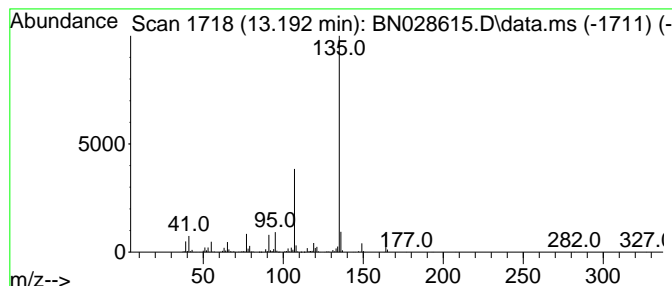
Quant Method : Z:\svoasrv\HPCHEM1\BNA_N\Methods\SFAM-EPA-BN111423.MA.M
 Quant Title : SVOA CALIBRATION

TIC Library : C:\Database\NIST20.L
 TIC Integration Parameters: LSCINT.P

 Peak Number 11 Phenol, 4-(1,1-dimethylprop... Concentration Rank 17

R.T.	EstConc	Area	Relative to ISTD	R.T.
13.192	10.43 ng/ul	1030880	Acenaphthene-d10	14.339

Hit#	of 5	Tentative ID	MW	MolForm	CAS#	Qual
1		Phenol, 4-(1,1-dimethylpropyl)-	164	C11H16O	000080-46-6	95
2		Phenol, 4-(1,1-dimethylpropyl)-	164	C11H16O	000080-46-6	94
3		Phenol, 4-(1,1-dimethylpropyl)-	164	C11H16O	000080-46-6	87
4		Phenol, p-tert-butyl-	150	C10H14O	000098-54-4	86
5		Phenol, m-tert-butyl-	150	C10H14O	000585-34-2	86



Data Path : Z:\svoasrv\HPCHEM1\BNA_N\Data\BN111423\
 Data File : BN028615.D
 Acq On : 14 Nov 2023 23:09
 Operator : MA/JU
 Sample : 05337-16
 Misc :
 ALS Vial : 22 Sample Multiplier: 1

Instrument :
 BNA_N
 ClientSampleId :
 GCDK2

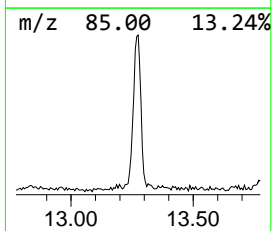
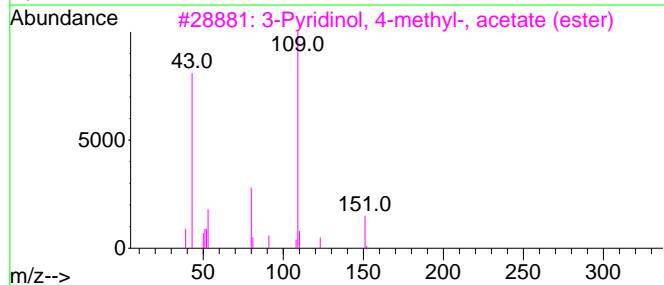
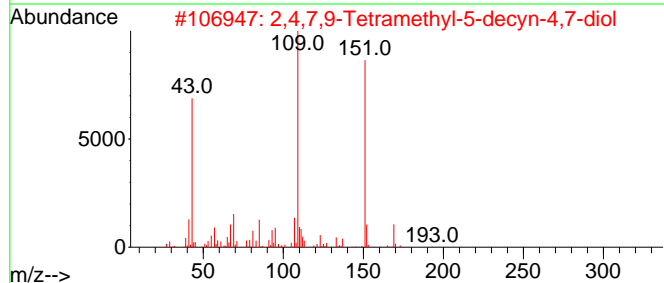
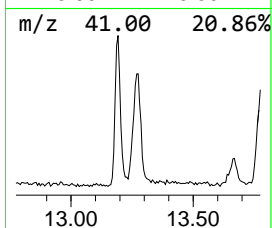
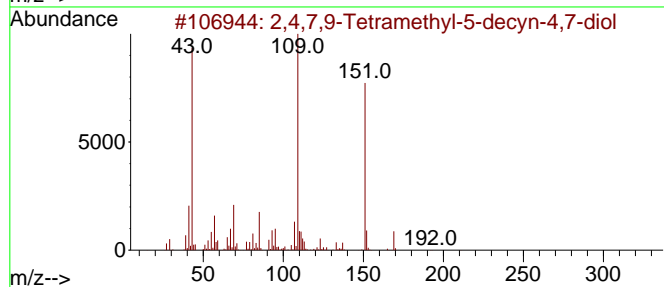
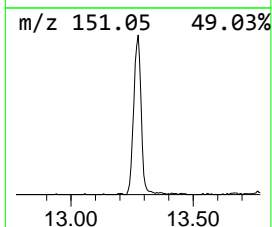
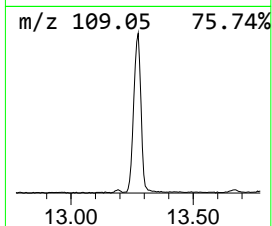
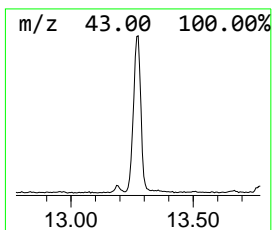
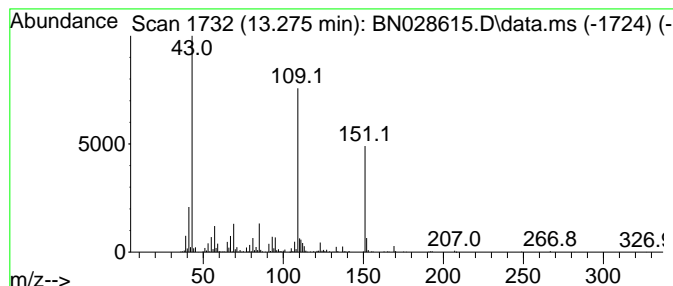
Quant Method : Z:\svoasrv\HPCHEM1\BNA_N\Methods\SFAM-EPA-BN111423.MA.M
 Quant Title : SVOA CALIBRATION

TIC Library : C:\Database\NIST20.L
 TIC Integration Parameters: LSCINT.P

 Peak Number 12 2,4,7,9-Tetramethyl-5-decyn... Concentration Rank 25

R.T.	EstConc	Area	Relative to ISTD	R.T.
13.275	6.73 ng/ul	665006	Acenaphthene-d10	14.339

Hit#	of	5	Tentative ID	MW	MolForm	CAS#	Qual
1			2,4,7,9-Tetramethyl-5-decyn-4,7-...	226	C14H26O2	000126-86-3	90
2			2,4,7,9-Tetramethyl-5-decyn-4,7-...	226	C14H26O2	000126-86-3	83
3			3-Pyridinol, 4-methyl-, acetate ...	151	C8H9NO2	001006-96-8	59
4			Metacetamol	151	C8H9NO2	000621-42-1	59
5			Pyridine, 2-butyl-, 1-oxide	151	C9H13NO	031396-32-4	59



Data Path : Z:\svoasrv\HPCHEM1\BNA_N\Data\BN111423\
 Data File : BN028615.D
 Acq On : 14 Nov 2023 23:09
 Operator : MA/JU
 Sample : 05337-16
 Misc :
 ALS Vial : 22 Sample Multiplier: 1

Instrument :
 BNA_N
 ClientSampleId :
 GCDK2

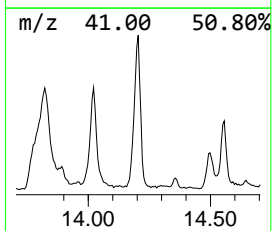
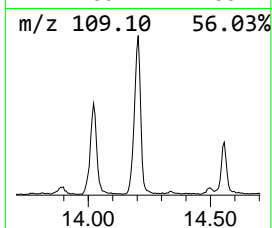
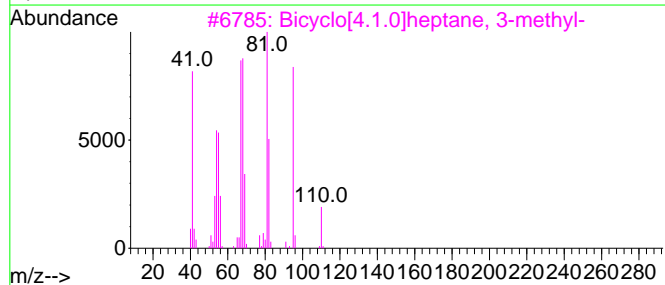
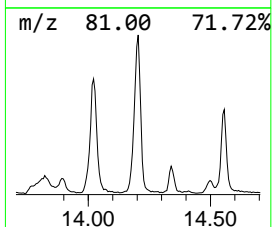
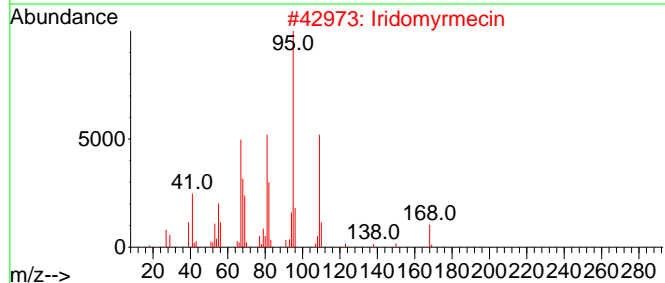
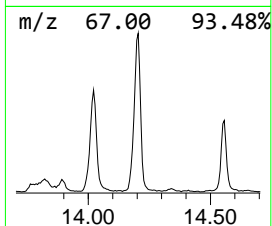
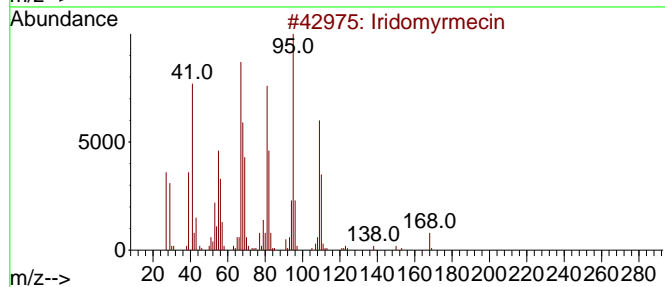
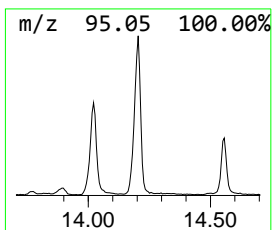
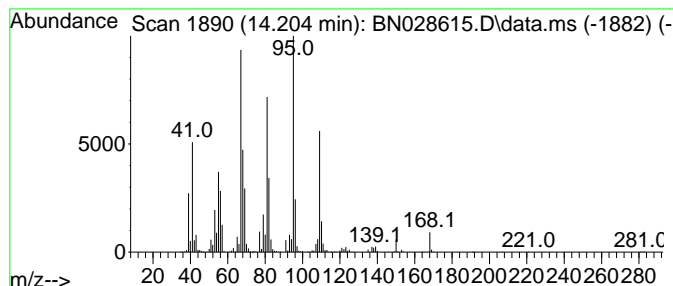
Quant Method : Z:\svoasrv\HPCHEM1\BNA_N\Methods\SFAM-EPA-BN111423.MA.M
 Quant Title : SVOA CALIBRATION

TIC Library : C:\Database\NIST20.L
 TIC Integration Parameters: LSCINT.P

 Peak Number 13 Iridomyrmecin Concentration Rank 16

R.T.	EstConc	Area	Relative to ISTD	R.T.
14.204	12.33 ng/ul	1219140	Acenaphthene-d10	14.339

Hit#	of 5	Tentative ID	MW	MolForm	CAS#	Qual
1		Iridomyrmecin	168	C10H16O2	000485-43-8	95
2		Iridomyrmecin	168	C10H16O2	000485-43-8	62
3		Bicyclo[4.1.0]heptane, 3-methyl-	110	C8H14	041977-47-3	50
4		Bicyclo[3.1.0]hexane, 1,5-dimethyl-	110	C8H14	1010142-17-5	50
5		1,4-Pentadiene, 2,3,3-trimethyl-	110	C8H14	000756-02-5	46



Data Path : Z:\svoasrv\HPCHEM1\BNA_N\Data\BN111423\
 Data File : BN028615.D
 Acq On : 14 Nov 2023 23:09
 Operator : MA/JU
 Sample : 05337-16
 Misc :
 ALS Vial : 22 Sample Multiplier: 1

Instrument :
 BNA_N
 ClientSampleId :
 GCDK2

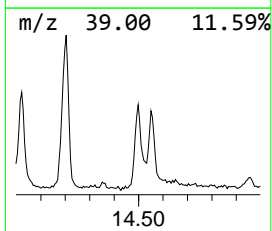
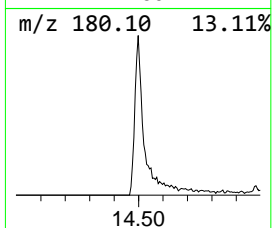
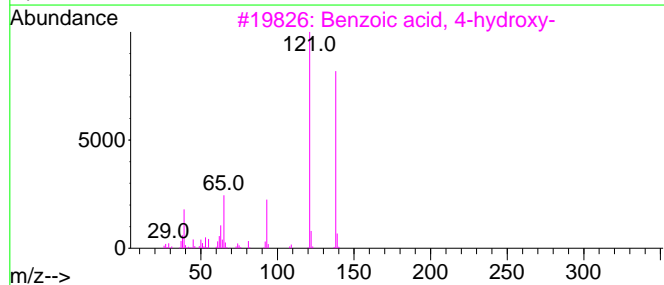
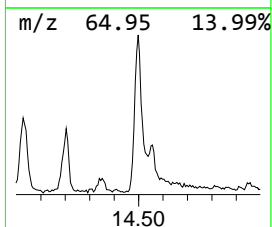
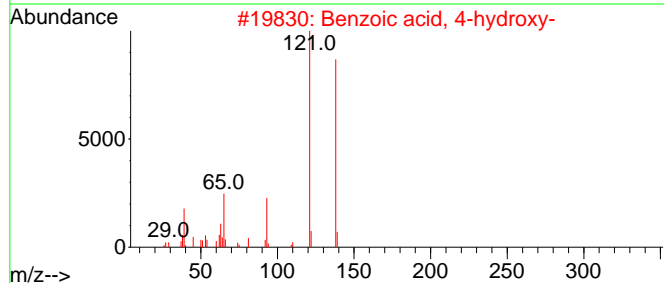
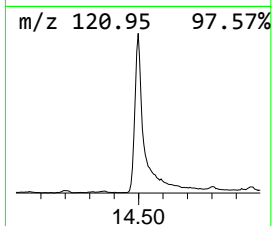
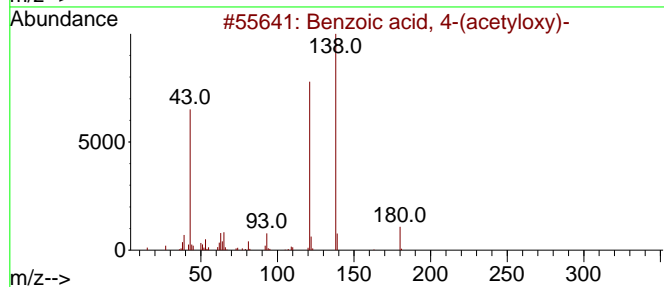
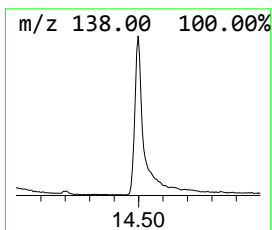
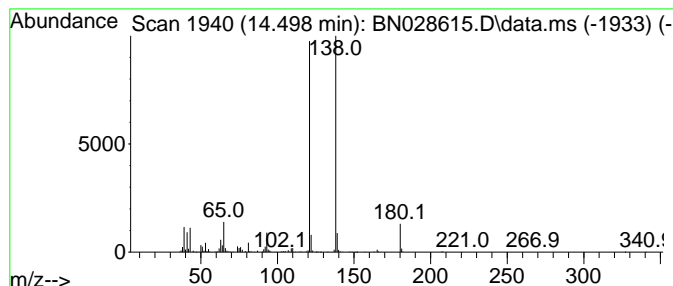
Quant Method : Z:\svoasrv\HPCHEM1\BNA_N\Methods\SFAM-EPA-BN111423.MA.M
 Quant Title : SVOA CALIBRATION

TIC Library : C:\Database\NIST20.L
 TIC Integration Parameters: LSCINT.P

 Peak Number 14 Benzoic acid, 4-(acetyloxy)- Concentration Rank 24

R.T.	EstConc	Area	Relative to ISTD	R.T.
14.498	7.29 ng/ul	720593	Acenaphthene-d10	14.339

Hit#	of	5	Tentative ID	MW	MolForm	CAS#	Qual
1			Benzoic acid, 4-(acetyloxy)-	180	C9H8O4	002345-34-8	91
2			Benzoic acid, 4-hydroxy-	138	C7H6O3	000099-96-7	87
3			Benzoic acid, 4-hydroxy-	138	C7H6O3	000099-96-7	83
4			4-(Cyclopentyloxy)benzoic acid	206	C12H14O3	030762-02-8	78
5			Isobutyl 4-hydroxybenzoate	194	C11H14O3	004247-02-3	78



Data Path : Z:\svoasrv\HPCHEM1\BNA_N\Data\BN111423\
 Data File : BN028615.D
 Acq On : 14 Nov 2023 23:09
 Operator : MA/JU
 Sample : 05337-16
 Misc :
 ALS Vial : 22 Sample Multiplier: 1

Instrument :
 BNA_N
 ClientSampleId :
 GCDK2

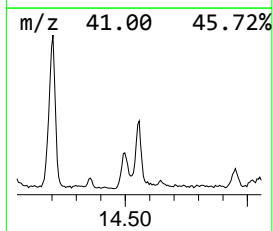
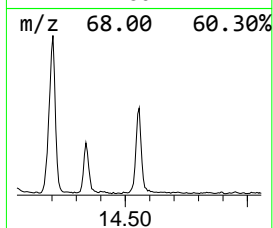
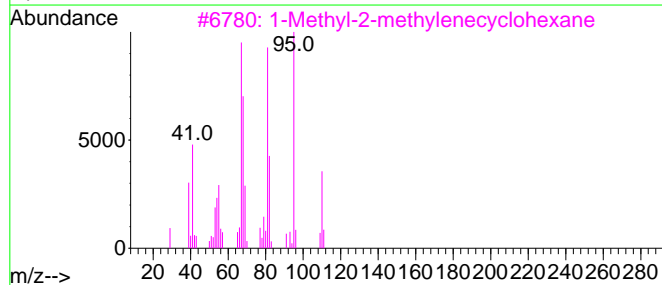
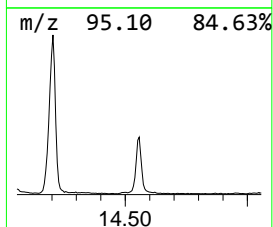
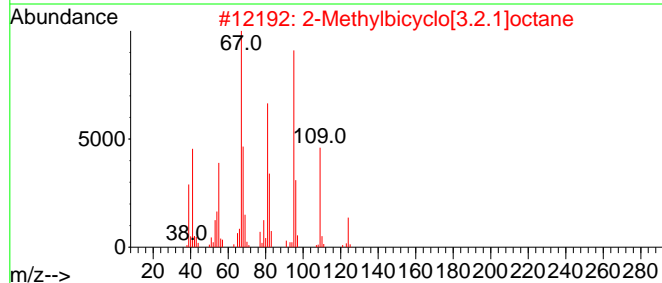
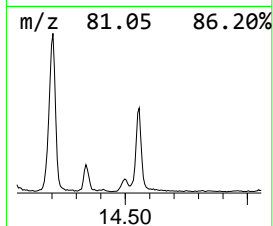
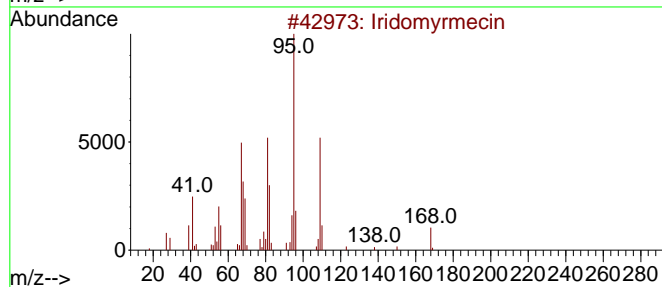
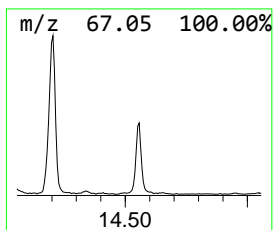
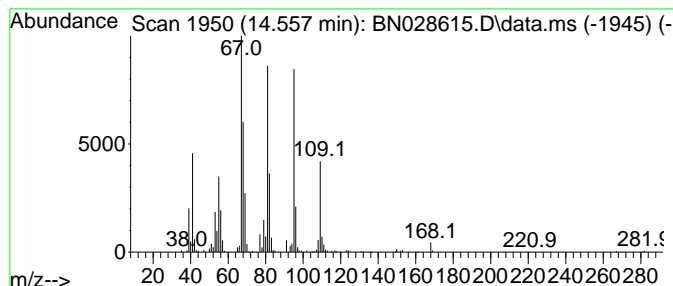
Quant Method : Z:\svoasrv\HPCHEM1\BNA_N\Methods\SFAM-EPA-BN111423.MA.M
 Quant Title : SVOA CALIBRATION

TIC Library : C:\Database\NIST20.L
 TIC Integration Parameters: LSCINT.P

 Peak Number 15 2-Methylbicyclo[3.2.1]octane Concentration Rank 27

R.T.	EstConc	Area	Relative to ISTD	R.T.
14.557	5.62 ng/ul	555309	Acenaphthene-d10	14.339

Hit#	of	5	Tentative ID	MW	MolForm	CAS#	Qual
1			Iridomyrmecin	168	C10H16O2	000485-43-8	90
2			2-Methylbicyclo[3.2.1]octane	124	C9H16	1010215-28-0	80
3			1-Methyl-2-methylenecyclohexane	110	C8H14	002808-75-5	64
4			Cyclohexane, methylene-	96	C7H12	001192-37-6	49
5			1-Ethynylcyclopentanol	110	C7H10O	017356-19-3	47



Data Path : Z:\svoasrv\HPCHEM1\BNA_N\Data\BN111423\
 Data File : BN028615.D
 Acq On : 14 Nov 2023 23:09
 Operator : MA/JU
 Sample : 05337-16
 Misc :
 ALS Vial : 22 Sample Multiplier: 1

Instrument :
 BNA_N
 ClientSampleId :
 GCDK2

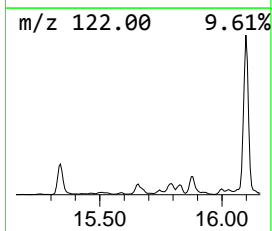
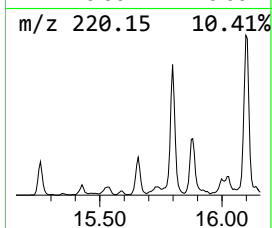
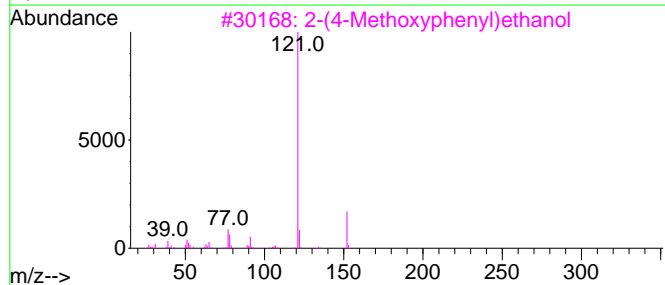
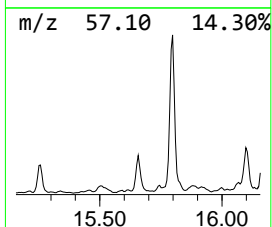
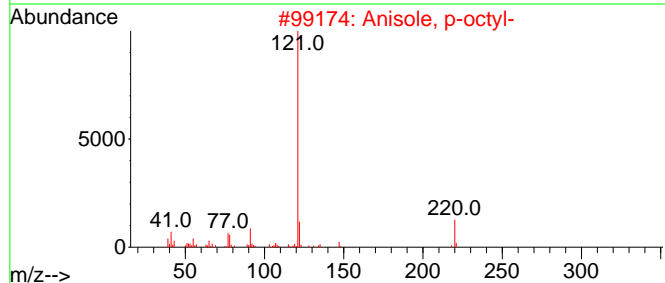
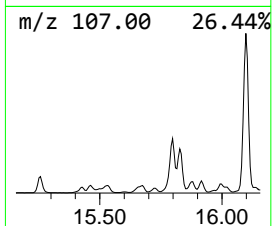
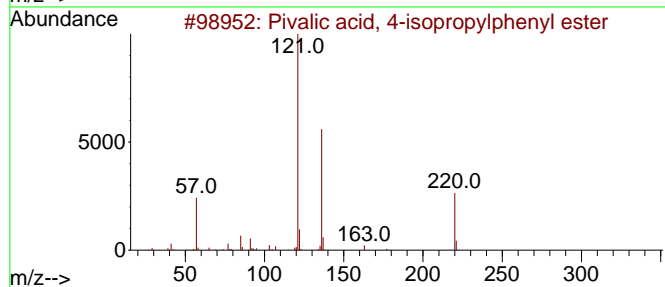
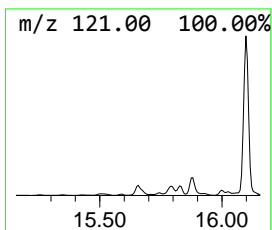
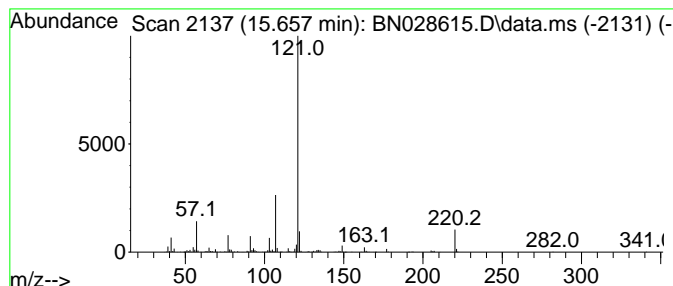
Quant Method : Z:\svoasrv\HPCHEM1\BNA_N\Methods\SFAM-EPA-BN111423.MA.M
 Quant Title : SVOA CALIBRATION

TIC Library : C:\Database\NIST20.L
 TIC Integration Parameters: LSCINT.P

 Peak Number 17 Pivalic acid, 4-isopropylph... Concentration Rank 23

R.T.	EstConc	Area	Relative to ISTD	R.T.
15.657	7.54 ng/ul	745283	Acenaphthene-d10	14.339

Hit#	of	5	Tentative ID	MW	MolForm	CAS#	Qual
1			Pivalic acid, 4-isopropylphenyl ...	220	C14H20O2	1000330-92-0	59
2			Anisole, p-octyl-	220	C15H24O	003307-19-5	53
3			2-(4-Methoxyphenyl)ethanol	152	C9H12O2	000702-23-8	49
4			Benzeneacetic acid, 4-methoxy-	166	C9H10O3	000104-01-8	47
5			Benzene, 1-methoxy-4-(2-methoxye...	166	C10H14O2	080314-58-5	47



Data Path : Z:\svoasrv\HPCHEM1\BNA_N\Data\BN111423\
 Data File : BN028615.D
 Acq On : 14 Nov 2023 23:09
 Operator : MA/JU
 Sample : 05337-16
 Misc :
 ALS Vial : 22 Sample Multiplier: 1

Instrument :
 BNA_N
 ClientSampleId :
 GCDK2

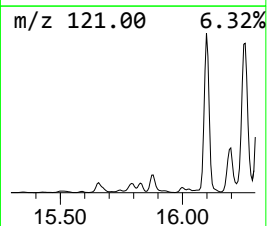
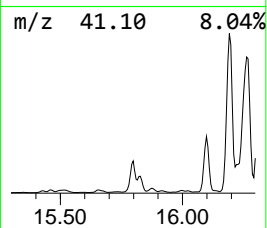
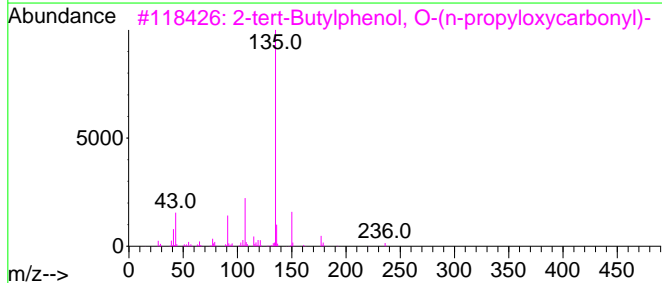
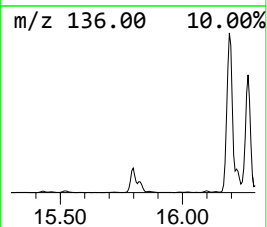
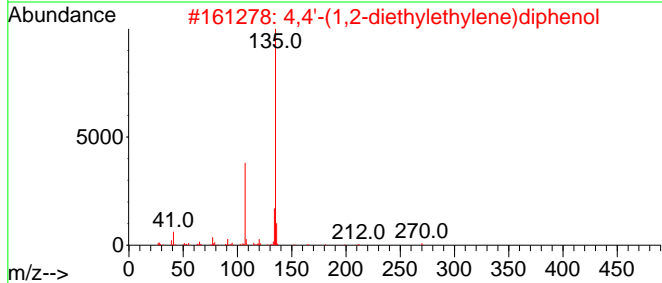
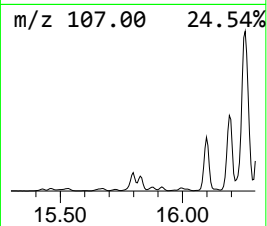
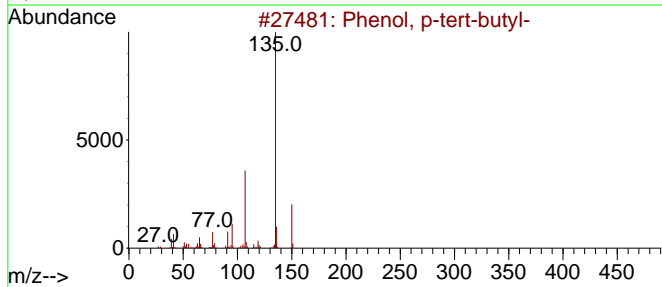
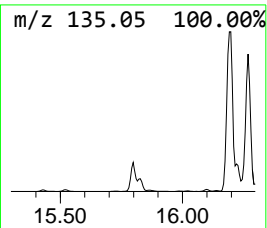
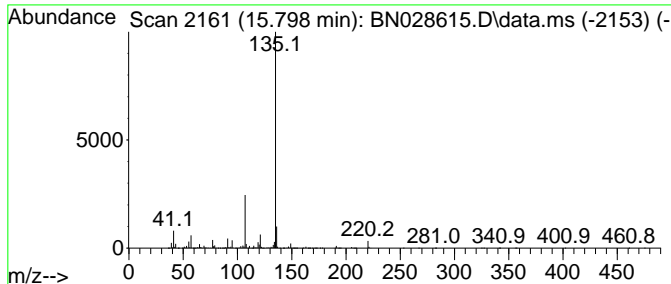
Quant Method : Z:\svoasrv\HPCHEM1\BNA_N\Methods\SFAM-EPA-BN111423.MA.M
 Quant Title : SVOA CALIBRATION

TIC Library : C:\Database\NIST20.L
 TIC Integration Parameters: LSCINT.P

 Peak Number 18 Phenol, p-tert-butyl- Concentration Rank 12

R.T.	EstConc	Area	Relative to ISTD	R.T.
15.798	39.51 ng/ul	5060070	Phenanthrene-d10	17.092

Hit#	of	5	Tentative ID	MW	MolForm	CAS#	Qual
1			Phenol, p-tert-butyl-	150	C10H14O	000098-54-4	72
2			4,4'-(1,2-diethylethylene)diphenol	270	C18H22O2	005635-50-7	72
3			2-tert-Butylphenol, O-(n-propylo...	236	C14H20O3	1000487-37-9	72
4			Hexestrol, O-isopropylloxycarbonyl-	356	C22H28O4	1000487-68-4	72
5			4-(1,1-Dimethylpropyl)phenyl ace...	206	C13H18O2	1000373-45-3	72



Data Path : Z:\svoasrv\HPCHEM1\BNA_N\Data\BN111423\
 Data File : BN028615.D
 Acq On : 14 Nov 2023 23:09
 Operator : MA/JU
 Sample : 05337-16
 Misc :
 ALS Vial : 22 Sample Multiplier: 1

Instrument :
 BNA_N
 ClientSampleId :
 GCDK2

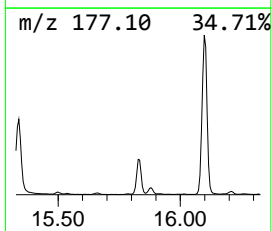
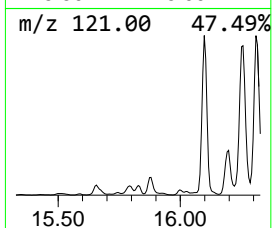
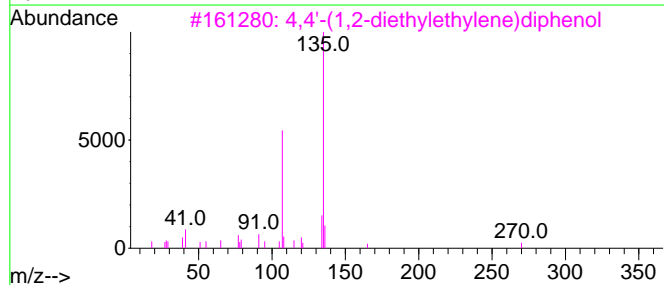
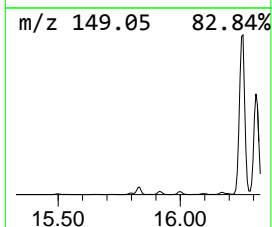
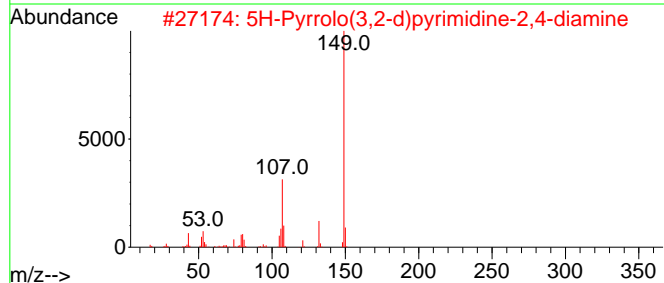
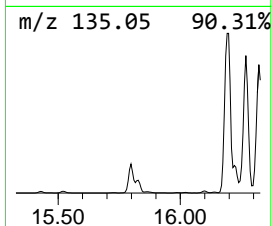
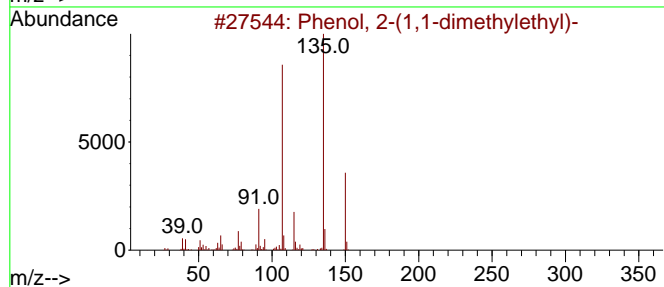
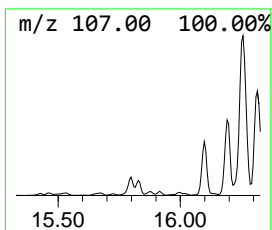
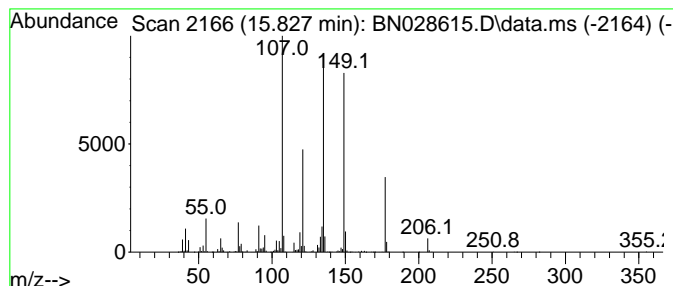
Quant Method : Z:\svoasrv\HPCHEM1\BNA_N\Methods\SFAM-EPA-BN111423.MA.M
 Quant Title : SVOA CALIBRATION

TIC Library : C:\Database\NIST20.L
 TIC Integration Parameters: LSCINT.P

 Peak Number 19 Phenol, 2-(1,1-dimethylethyl)- Concentration Rank 13

R.T.	EstConc	Area	Relative to ISTD	R.T.
15.827	17.95 ng/ul	2298350	Phenanthrene-d10	17.092

Hit#	of 5	Tentative ID	MW	MolForm	CAS#	Qual
1		Phenol, 2-(1,1-dimethylethyl)-	150	C10H14O	000088-18-6	55
2		5H-Pyrrolo(3,2-d)pyrimidine-2,4-...	149	C6H7N5	1000244-21-4	43
3		4,4'-(1,2-diethylethylene)diphenol	270	C18H22O2	005635-50-7	43
4		1,5,6,7-Tetrahydro-4-indolone	135	C8H9NO	013754-86-4	38
5		1-Isopropenyl-3-propenylcyclopen...	150	C11H18	1000192-81-2	25



Data Path : Z:\svoasrv\HPCHEM1\BNA_N\Data\BN111423\
 Data File : BN028615.D
 Acq On : 14 Nov 2023 23:09
 Operator : MA/JU
 Sample : 05337-16
 Misc :
 ALS Vial : 22 Sample Multiplier: 1

Instrument :
 BNA_N
 ClientSampleId :
 GCDK2

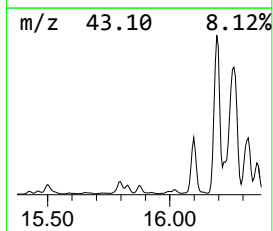
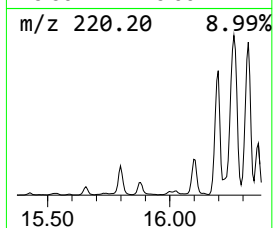
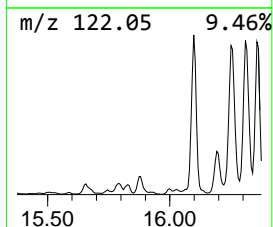
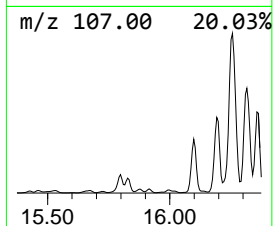
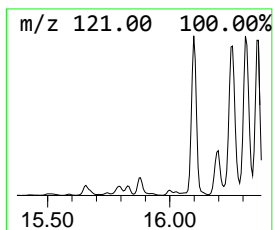
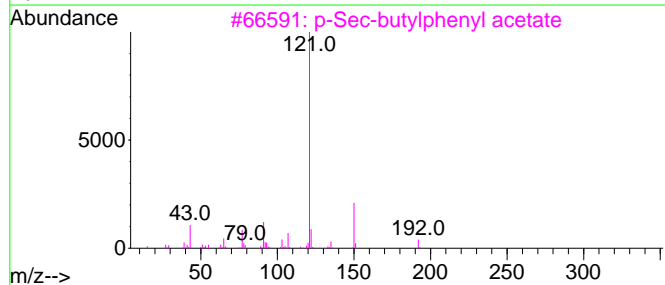
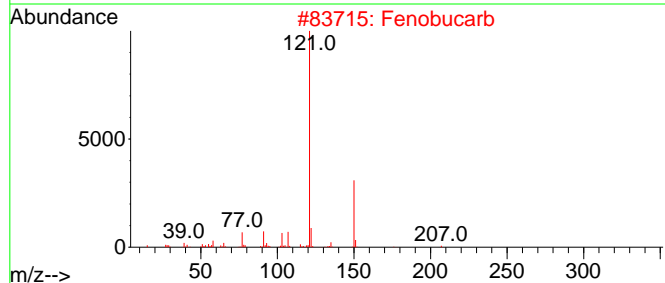
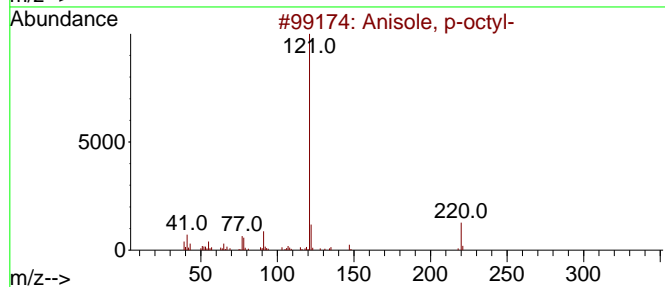
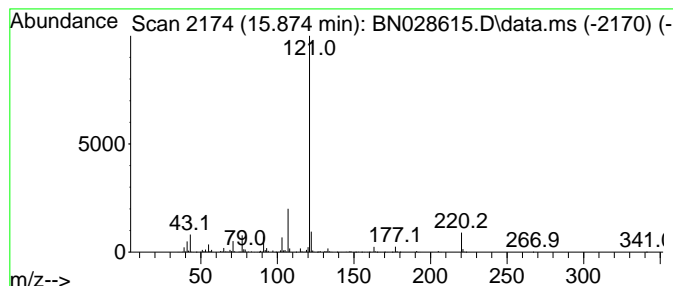
Quant Method : Z:\svoasrv\HPCHEM1\BNA_N\Methods\SFAM-EPA-BN111423.MA.M
 Quant Title : SVOA CALIBRATION

TIC Library : C:\Database\NIST20.L
 TIC Integration Parameters: LSCINT.P

 Peak Number 20 Anisole, p-octyl- Concentration Rank 26

R.T.	EstConc	Area	Relative to ISTD	R.T.
15.874	5.89 ng/ul	754420	Phenanthrene-d10	17.092

Hit#	of 5	Tentative ID	MW	MolForm	CAS#	Qual
1		Anisole, p-octyl-	220	C15H24O	003307-19-5	76
2		Fenobucarb	207	C12H17NO2	003766-81-2	59
3		p-Sec-butylphenyl acetate	192	C12H16O2	003245-24-7	59
4		Phenol, 2-(1-methylpropyl)-	150	C10H14O	000089-72-5	56
5		1-Methoxy-2-methyl-1-phenylpenta...	206	C13H18O2	1010424-60-1	53



Data Path : Z:\svoasrv\HPCHEM1\BNA_N\Data\BN111423\
 Data File : BN028615.D
 Acq On : 14 Nov 2023 23:09
 Operator : MA/JU
 Sample : 05337-16
 Misc :
 ALS Vial : 22 Sample Multiplier: 1

Instrument :
 BNA_N
 ClientSampleId :
 GCDK2

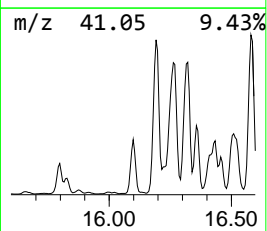
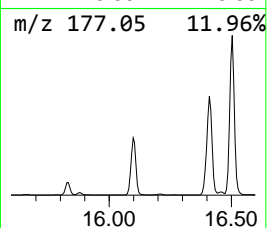
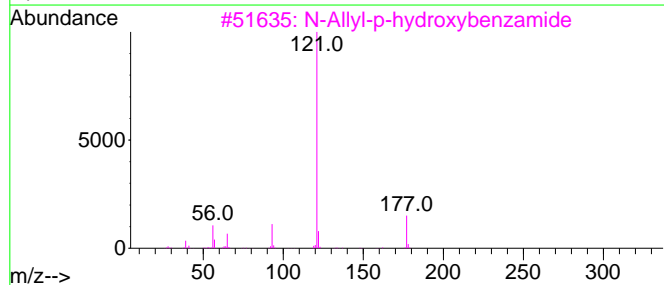
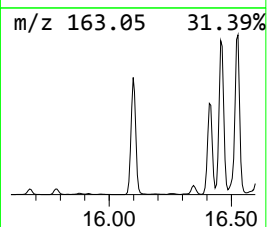
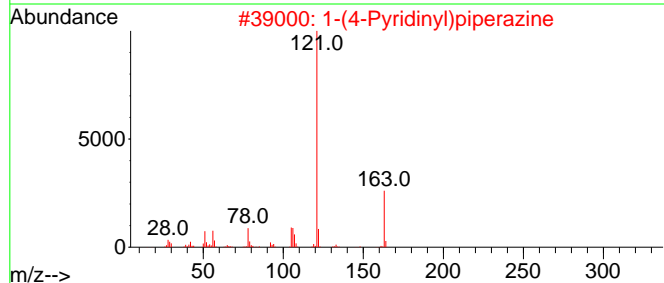
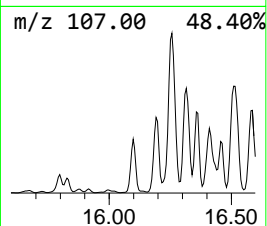
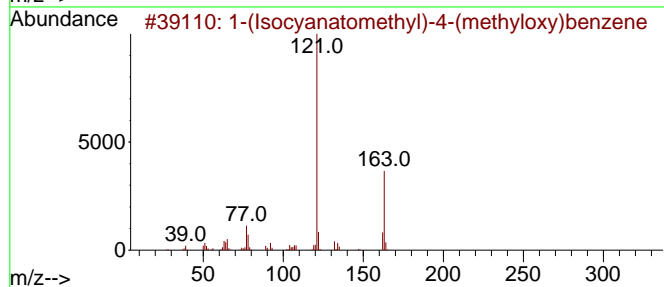
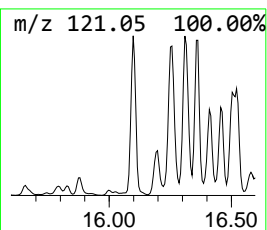
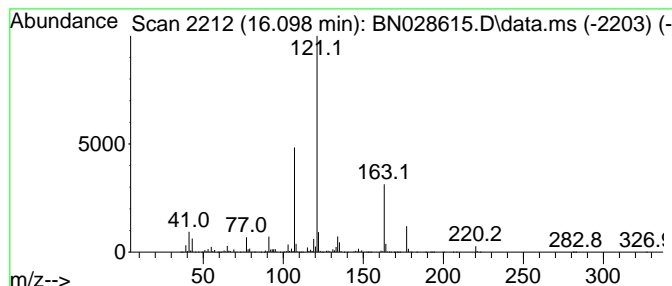
Quant Method : Z:\svoasrv\HPCHEM1\BNA_N\Methods\SFAM-EPA-BN111423.MA.M
 Quant Title : SVOA CALIBRATION

TIC Library : C:\Database\NIST20.L
 TIC Integration Parameters: LSCINT.P

 Peak Number 23 1-(Isocyanatomethyl)-4-(met... Concentration Rank 8

R.T.	EstConc	Area	Relative to ISTD	R.T.
16.098	80.17 ng/ul	10267300	Phenanthrene-d10	17.092

Hit#	of	5	Tentative ID	MW	MolForm	CAS#	Qual
1			1-(Isocyanatomethyl)-4-(methylox...	163	C9H9NO2	056651-60-6	50
2			1-(4-Pyridinyl)piperazine	163	C9H13N3	001008-91-9	50
3			N-Allyl-p-hydroxybenzamide	177	C10H11NO2	090921-72-5	43
4			2-(4-Methoxyphenyl)ethanol	152	C9H12O2	000702-23-8	43
5			p-Sec-butylphenyl acetate	192	C12H16O2	003245-24-7	43



Data Path : Z:\svoasrv\HPCHEM1\BNA_N\Data\BN111423\
 Data File : BN028615.D
 Acq On : 14 Nov 2023 23:09
 Operator : MA/JU
 Sample : 05337-16
 Misc :
 ALS Vial : 22 Sample Multiplier: 1

Instrument :
 BNA_N
 ClientSampleId :
 GCDK2

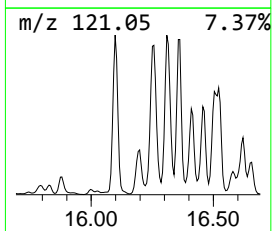
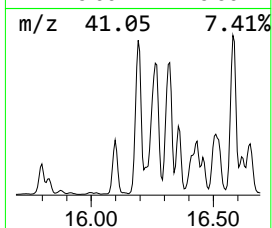
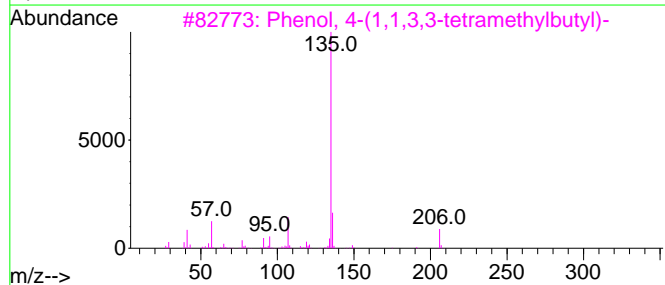
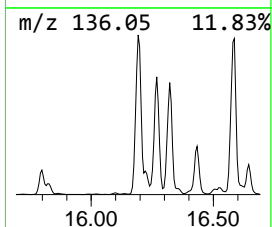
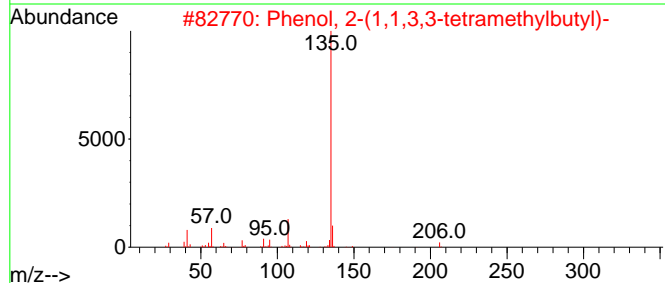
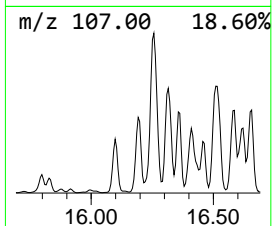
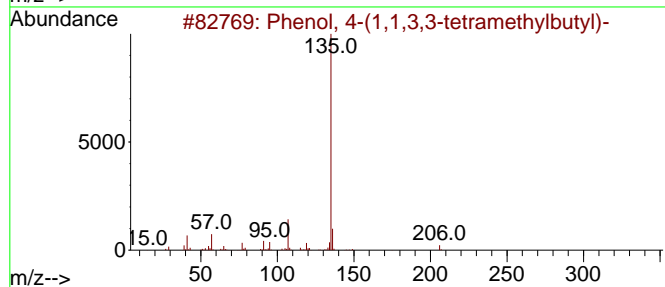
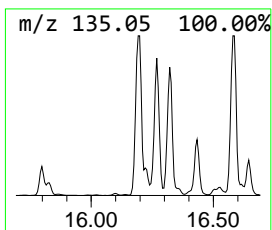
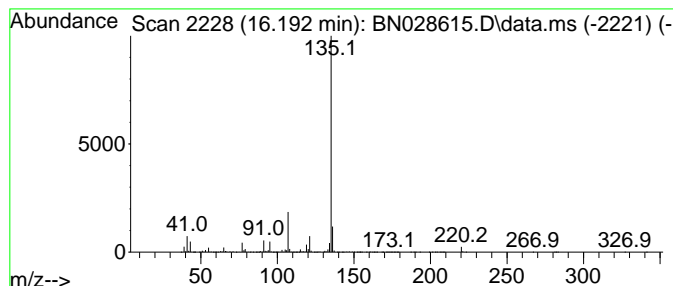
Quant Method : Z:\svoasrv\HPCHEM1\BNA_N\Methods\SFAM-EPA-BN111423.MA.M
 Quant Title : SVOA CALIBRATION

TIC Library : C:\Database\NIST20.L
 TIC Integration Parameters: LSCINT.P

 Peak Number 24 Phenol, 4-(1,1,3,3-tetramet... Concentration Rank 3

R.T.	EstConc	Area	Relative to ISTD	R.T.
16.192	224.08 ng/ul	28697900	Phenanthrene-d10	17.092

Hit#	of	5	Tentative ID	MW	MolForm	CAS#	Qual
1			Phenol, 4-(1,1,3,3-tetramethylbu...	206	C14H22O	000140-66-9	90
2			Phenol, 2-(1,1,3,3-tetramethylbu...	206	C14H22O	003884-95-5	90
3			Phenol, 4-(1,1,3,3-tetramethylbu...	206	C14H22O	000140-66-9	83
4			Phenol, 4-(1,1-dimethylpropyl)-	164	C11H16O	000080-46-6	78
5			4-tert-Butylphenyl acetate	192	C12H16O2	003056-64-2	78



Data Path : Z:\svoasrv\HPCHEM1\BNA_N\Data\BN111423\
 Data File : BN028615.D
 Acq On : 14 Nov 2023 23:09
 Operator : MA/JU
 Sample : 05337-16
 Misc :
 ALS Vial : 22 Sample Multiplier: 1

Instrument :
 BNA_N
 ClientSampleId :
 GCDK2

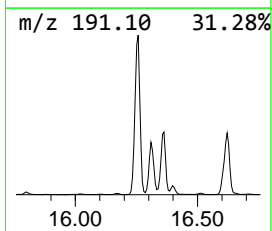
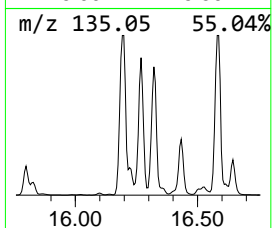
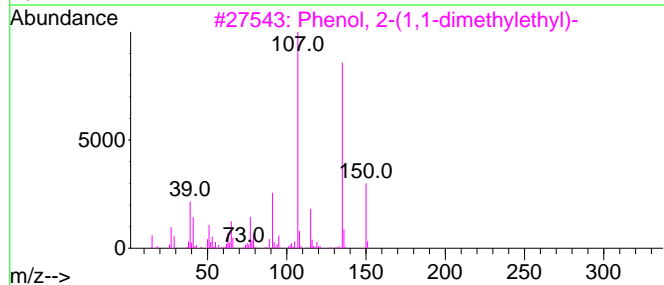
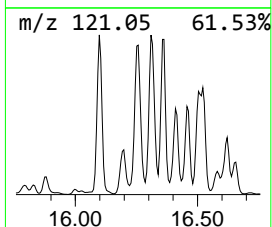
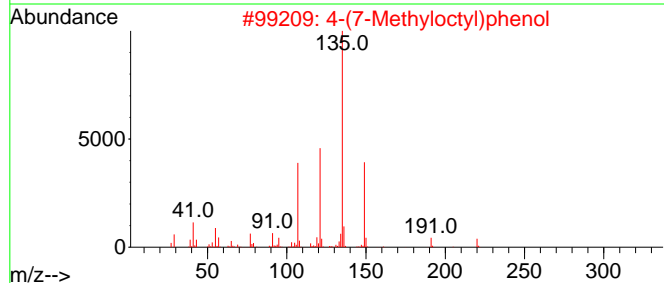
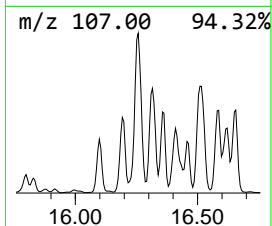
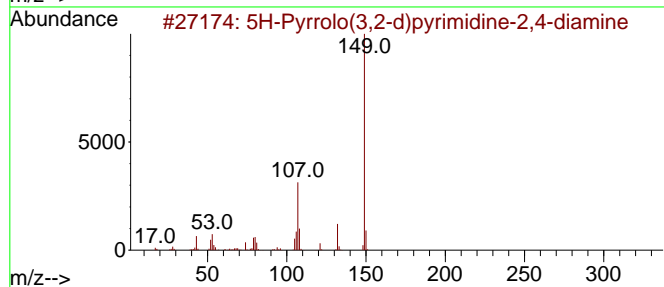
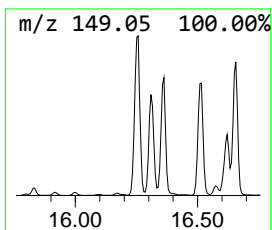
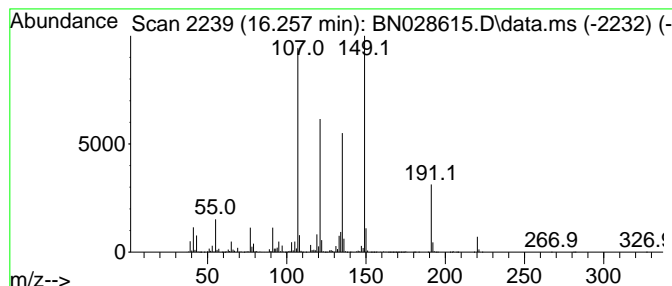
Quant Method : Z:\svoasrv\HPCHEM1\BNA_N\Methods\SFAM-EPA-BN111423.MA.M
 Quant Title : SVOA CALIBRATION

TIC Library : C:\Database\NIST20.L
 TIC Integration Parameters: LSCINT.P

 Peak Number 25 5H-Pyrrolo(3,2-d)pyrimidine... Concentration Rank 1

R.T.	EstConc	Area	Relative to ISTD	R.T.
16.257	359.01 ng/ul	45978200	Phenanthrene-d10	17.092

Hit#	of 5	Tentative ID	MW	MolForm	CAS#	Qual
1		5H-Pyrrolo(3,2-d)pyrimidine-2,4-...	149	C6H7N5	1000244-21-4	50
2		4-(7-Methyloctyl)phenol	220	C15H24O	024518-48-7	46
3		Phenol, 2-(1,1-dimethylethyl)-	150	C10H14O	000088-18-6	38
4		Hexestrol	270	C18H22O2	000084-16-2	38
5		Butanamide, N-(2-methylphenyl)-3...	191	C11H13NO2	000093-68-5	30



Data Path : Z:\svoasrv\HPCHEM1\BNA_N\Data\BN111423\
 Data File : BN028615.D
 Acq On : 14 Nov 2023 23:09
 Operator : MA/JU
 Sample : 05337-16
 Misc :
 ALS Vial : 22 Sample Multiplier: 1

Instrument :
 BNA_N
 ClientSampleId :
 GCDK2

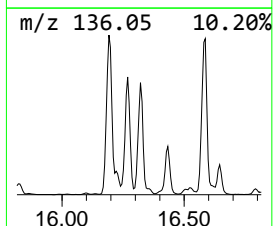
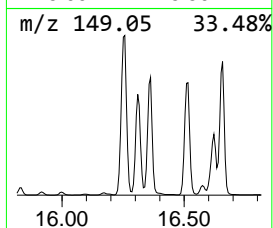
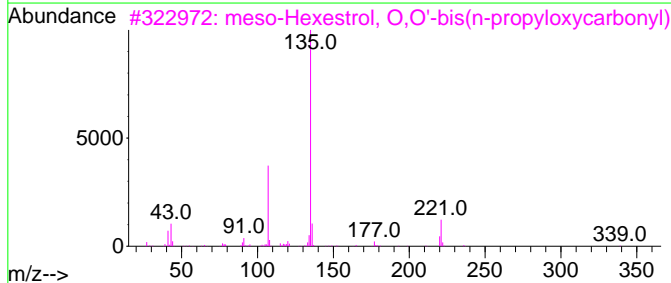
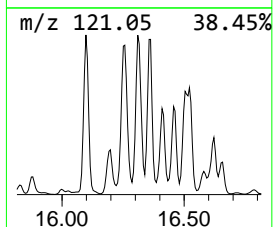
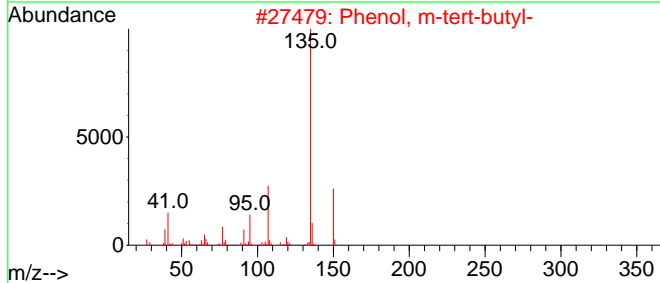
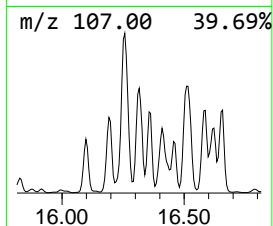
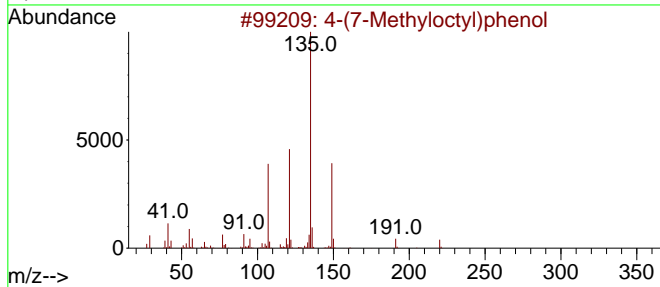
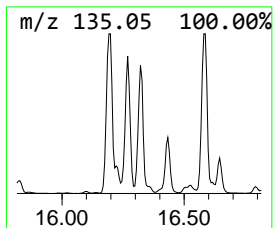
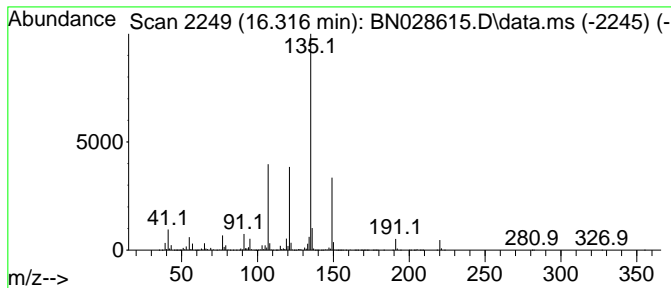
Quant Method : Z:\svoasrv\HPCHEM1\BNA_N\Methods\SFAM-EPA-BN111423.MA.M
 Quant Title : SVOA CALIBRATION

TIC Library : C:\Database\NIST20.L
 TIC Integration Parameters: LSCINT.P

 Peak Number 26 4-(7-Methyloctyl)phenol Concentration Rank 2

R.T.	EstConc	Area	Relative to ISTD	R.T.
16.316	247.88 ng/ul	31745300	Phenanthrene-d10	17.092

Hit#	of 5	Tentative ID	MW	MolForm	CAS#	Qual
1		4-(7-Methyloctyl)phenol	220	C15H24O	024518-48-7	98
2		Phenol, m-tert-butyl-	150	C10H14O	000585-34-2	64
3		meso-Hexestrol, O,O'-bis(n-propy...	442	C26H34O6	1000487-65-0	59
4		Phenol, 2-(1,1-dimethylethyl)-	150	C10H14O	000088-18-6	59
5		Phenol, 4-(1,1-dimethylpropyl)-	164	C11H16O	000080-46-6	59



Data Path : Z:\svoasrv\HPCHEM1\BNA_N\Data\BN111423\
 Data File : BN028615.D
 Acq On : 14 Nov 2023 23:09
 Operator : MA/JU
 Sample : 05337-16
 Misc :
 ALS Vial : 22 Sample Multiplier: 1

Instrument :
 BNA_N
 ClientSampleId :
 GCDK2

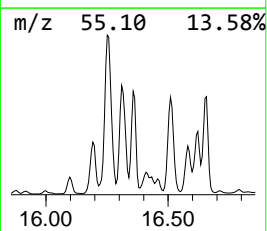
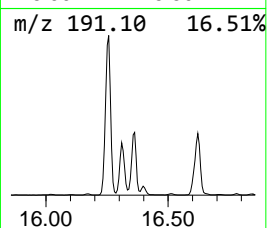
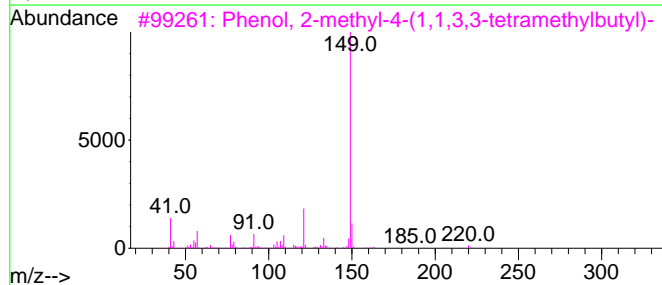
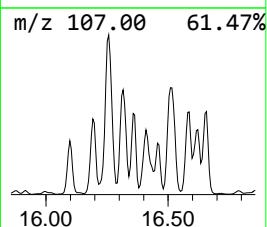
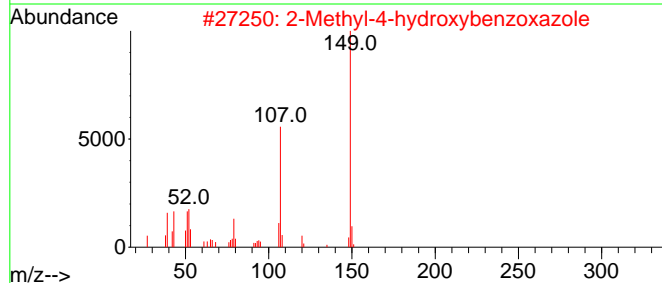
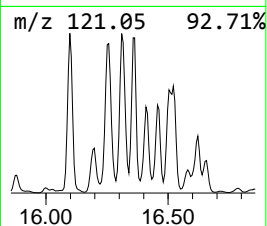
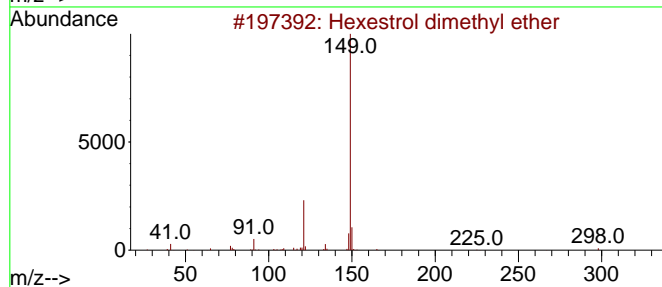
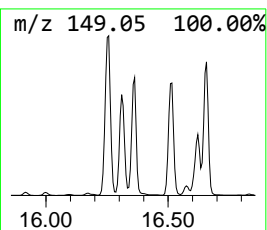
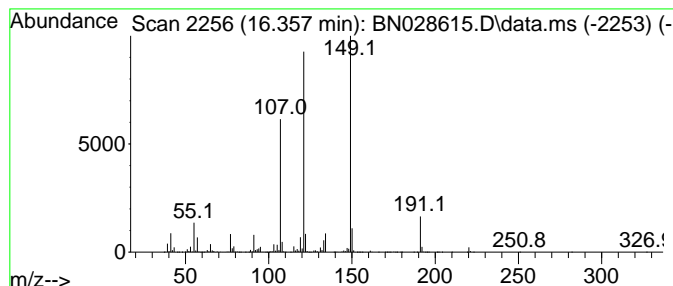
Quant Method : Z:\svoasrv\HPCHEM1\BNA_N\Methods\SFAM-EPA-BN111423.MA.M
 Quant Title : SVOA CALIBRATION

TIC Library : C:\Database\NIST20.L
 TIC Integration Parameters: LSCINT.P

 Peak Number 27 Hexestrol dimethyl ether Concentration Rank 6

R.T.	EstConc	Area	Relative to ISTD	R.T.
16.357	120.05 ng/ul	15374200	Phenanthrene-d10	17.092

Hit#	of	5	Tentative ID	MW	MolForm	CAS#	Qual
1			Hexestrol dimethyl ether	298	C20H26O2	000130-78-9	59
2			2-Methyl-4-hydroxybenzoxazole	149	C8H7NO2	051110-60-2	43
3			Phenol, 2-methyl-4-(1,1,3,3-tetr...	220	C15H24O	002219-84-3	38
4			4,5,7-Trimethyl-4,5,6,7-tetrahyd...	164	C10H16N2	113849-86-8	35
5			Phthalic acid, non-5-yn-3-yl pro...	330	C20H26O4	1000315-18-1	35



Data Path : Z:\svoasrv\HPCHEM1\BNA_N\Data\BN111423\
 Data File : BN028615.D
 Acq On : 14 Nov 2023 23:09
 Operator : MA/JU
 Sample : 05337-16
 Misc :
 ALS Vial : 22 Sample Multiplier: 1

Instrument :
 BNA_N
 ClientSampleId :
 GCDK2

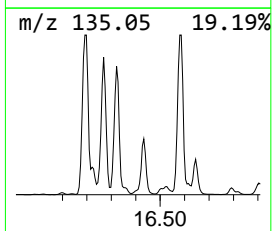
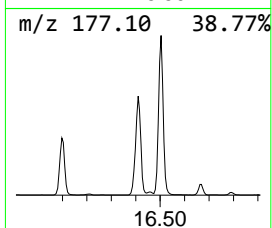
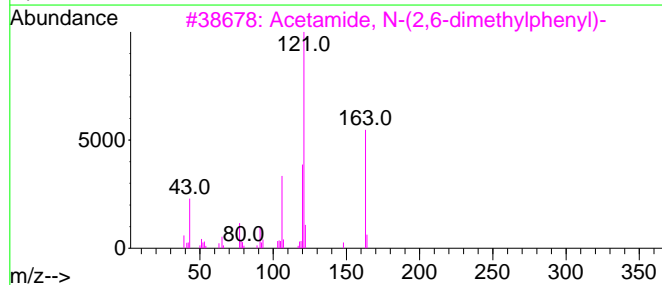
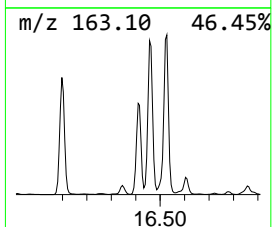
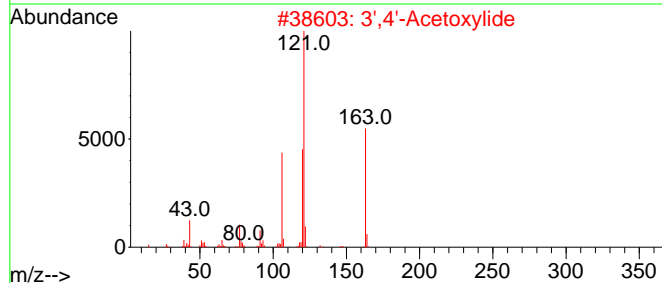
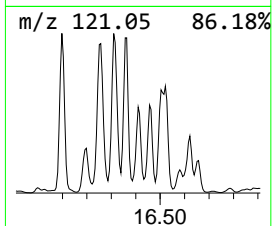
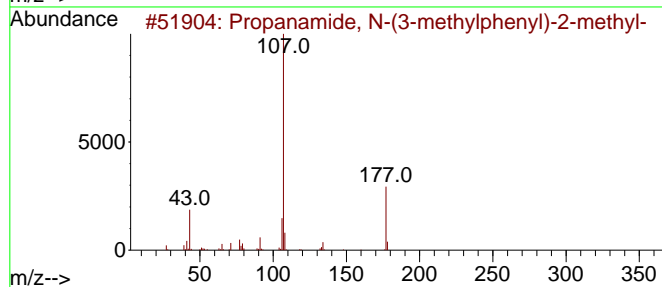
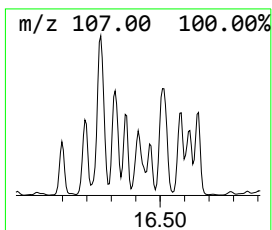
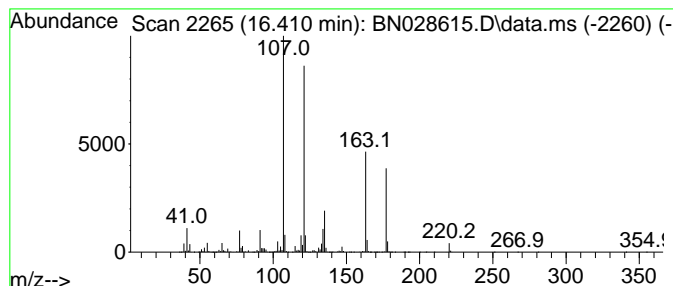
Quant Method : Z:\svoasrv\HPCHEM1\BNA_N\Methods\SFAM-EPA-BN111423.MA.M
 Quant Title : SVOA CALIBRATION

TIC Library : C:\Database\NIST20.L
 TIC Integration Parameters: LSCINT.P

 Peak Number 28 unknown-04 Concentration Rank 9

R.T.	EstConc	Area	Relative to ISTD	R.T.
16.410	75.56 ng/ul	9677460	Phenanthrene-d10	17.092

Hit#	of 5	Tentative ID	MW	MolForm	CAS#	Qual
1		Propanamide, N-(3-methylphenyl)-...	177	C11H15NO	1000307-32-0	38
2		3',4'-Acetoxyliide	163	C10H13NO	002198-54-1	30
3		Acetamide, N-(2,6-dimethylphenyl)-	163	C10H13NO	002198-53-0	30
4		Acetamide, N-(2,5-dimethylphenyl)-	163	C10H13NO	002050-44-4	30
5		benzoic acid, 4-(acetyloxy)-, 4-...	281	C16H11NO4	1000401-91-0	27



Data Path : Z:\svoasrv\HPCHEM1\BNA_N\Data\BN111423\
 Data File : BN028615.D
 Acq On : 14 Nov 2023 23:09
 Operator : MA/JU
 Sample : 05337-16
 Misc :
 ALS Vial : 22 Sample Multiplier: 1

Instrument :
 BNA_N
 ClientSampleId :
 GCDK2

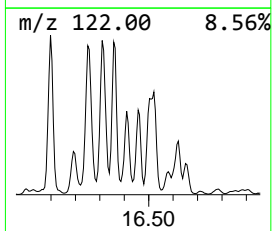
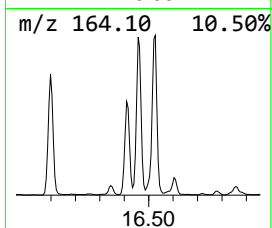
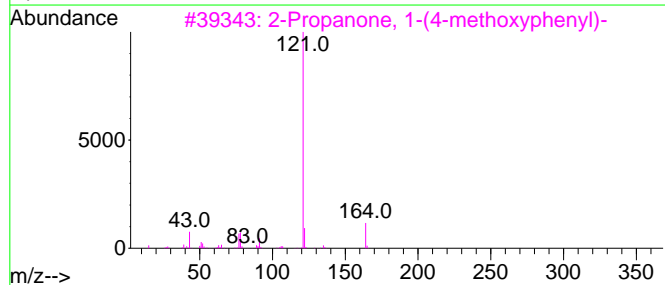
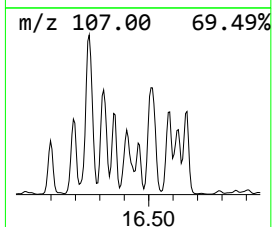
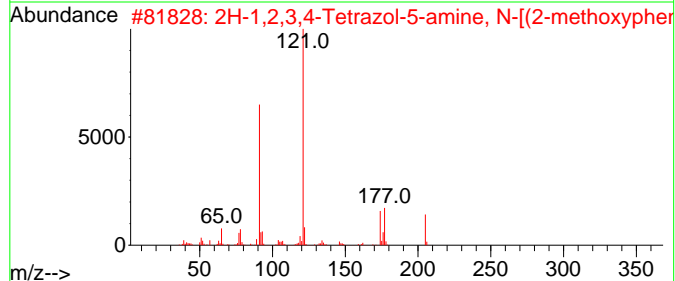
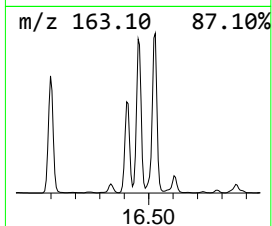
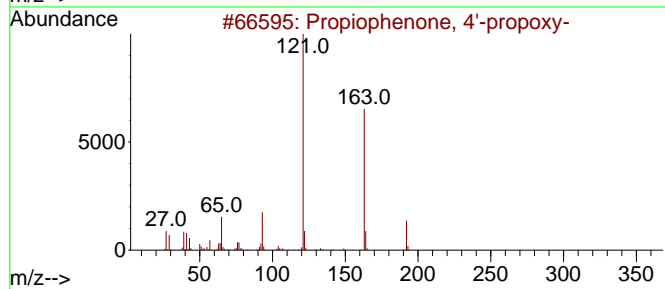
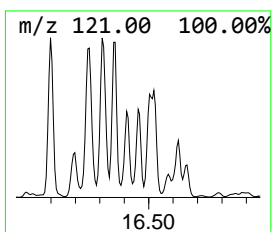
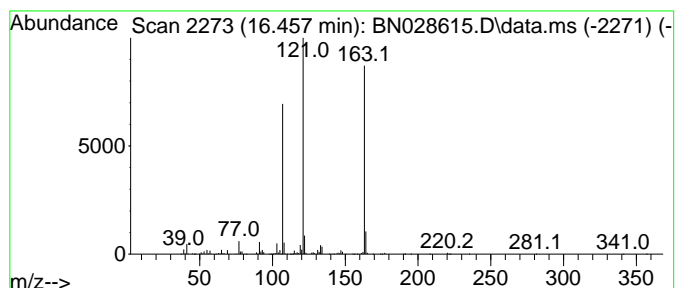
Quant Method : Z:\svoasrv\HPCHEM1\BNA_N\Methods\SFAM-EPA-BN111423.MA.M
 Quant Title : SVOA CALIBRATION

TIC Library : C:\Database\NIST20.L
 TIC Integration Parameters: LSCINT.P

 Peak Number 29 unknown-05 Concentration Rank 11

R.T.	EstConc	Area	Relative to ISTD	R.T.
16.457	52.04 ng/ul	6664550	Phenanthrene-d10	17.092

Hit#	of 5	Tentative ID	MW	MolForm	CAS#	Qual
1		Propiophenone, 4'-propoxy-	192	C12H16O2	005736-87-8	42
2		2H-1,2,3,4-Tetrazol-5-amine, N-[...]	205	C9H11N5O	1000337-56-1	27
3		2-Propanone, 1-(4-methoxyphenyl)-	164	C10H12O2	000122-84-9	27
4		p-Sec-butylphenyl acetate	192	C12H16O2	003245-24-7	27
5		2-Propanone, 1-(4-methoxyphenyl)-	164	C10H12O2	000122-84-9	27



Data Path : Z:\svoasrv\HPCHEM1\BNA_N\Data\BN111423\
 Data File : BN028615.D
 Acq On : 14 Nov 2023 23:09
 Operator : MA/JU
 Sample : 05337-16
 Misc :
 ALS Vial : 22 Sample Multiplier: 1

Instrument :
 BNA_N
 ClientSampleId :
 GCDK2

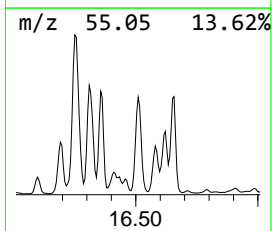
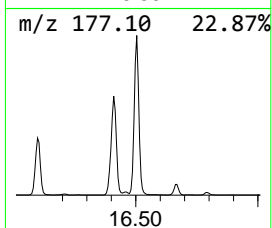
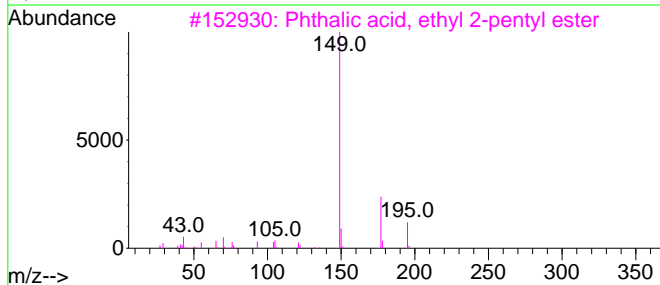
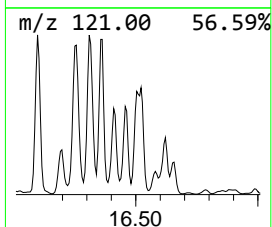
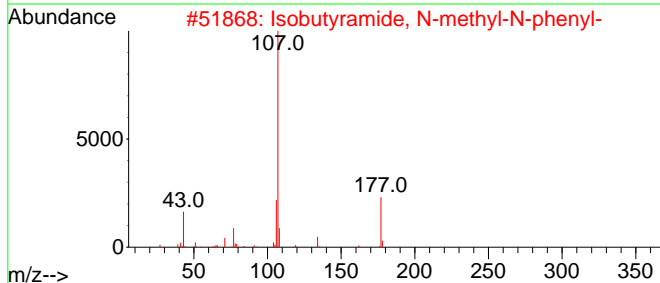
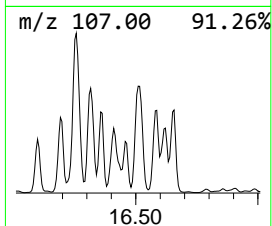
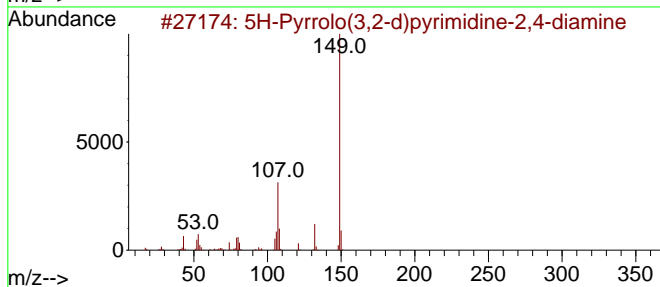
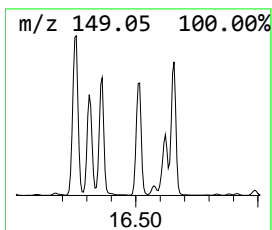
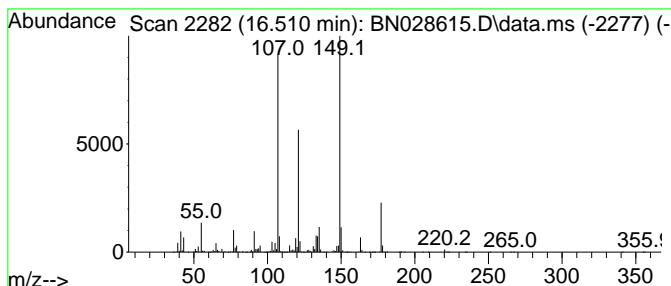
Quant Method : Z:\svoasrv\HPCHEM1\BNA_N\Methods\SFAM-EPA-BN111423.MA.M
 Quant Title : SVOA CALIBRATION

TIC Library : C:\Database\NIST20.L
 TIC Integration Parameters: LSCINT.P

 Peak Number 30 unknown-06 Concentration Rank 5

R.T.	EstConc	Area	Relative to ISTD	R.T.
16.510	186.29 ng/ul	23858000	Phenanthrene-d10	17.092

Hit#	of 5	Tentative ID	MW	MolForm	CAS#	Qual
1		5H-Pyrrolo(3,2-d)pyrimidine-2,4-...	149	C6H7N5	1000244-21-4	72
2		Isobutyramide, N-methyl-N-phenyl-	177	C11H15NO	1000339-96-1	38
3		Phthalic acid, ethyl 2-pentyl ester	264	C15H20O4	1000315-47-4	38
4		Methyl (1s,3s,5R,7S)-3-methylada...	208	C13H20O2	1010504-39-1	38
5		Propanamide, N-(3-methylphenyl)-...	177	C11H15NO	1000307-32-0	38



Data Path : Z:\svoasrv\HPCHEM1\BNA_N\Data\BN111423\
 Data File : BN028615.D
 Acq On : 14 Nov 2023 23:09
 Operator : MA/JU
 Sample : 05337-16
 Misc :
 ALS Vial : 22 Sample Multiplier: 1

Instrument :
 BNA_N
 ClientSampleId :
 GCDK2

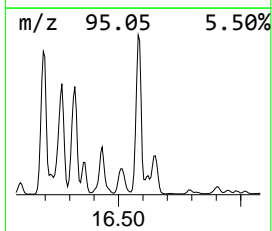
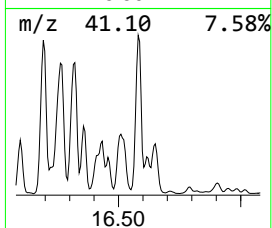
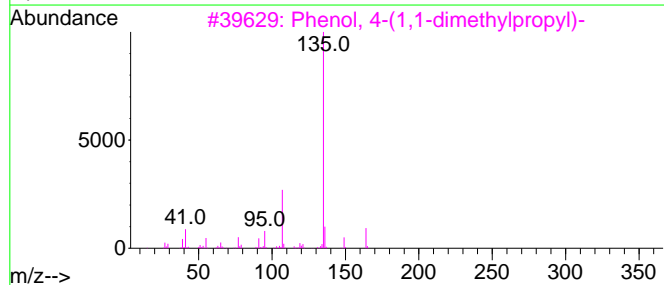
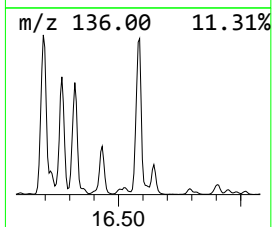
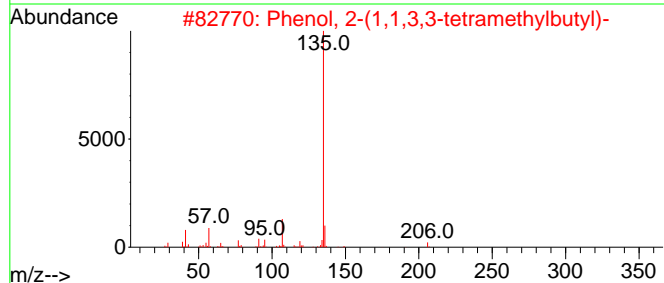
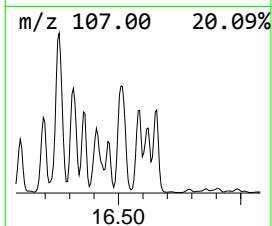
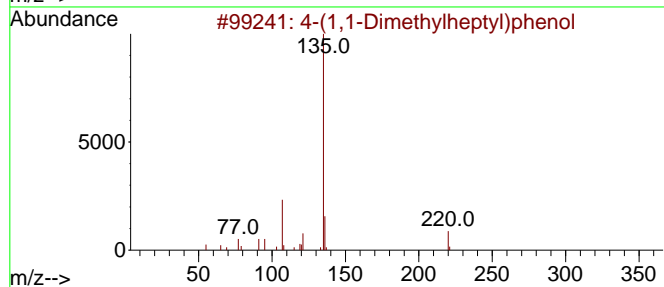
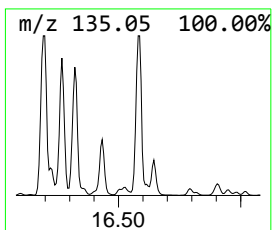
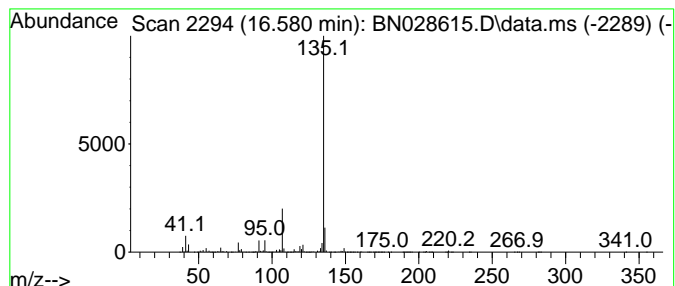
Quant Method : Z:\svoasrv\HPCHEM1\BNA_N\Methods\SFAM-EPA-BN111423.MA.M
 Quant Title : SVOA CALIBRATION

TIC Library : C:\Database\NIST20.L
 TIC Integration Parameters: LSCINT.P

 Peak Number 31 4-(1,1-Dimethylheptyl)phenol Concentration Rank 4

R.T.	EstConc	Area	Relative to ISTD	R.T.
16.580	220.91 ng/ul	28291000	Phenanthrene-d10	17.092

Hit#	of 5	Tentative ID	MW	MolForm	CAS#	Qual
1		4-(1,1-Dimethylheptyl)phenol	220	C15H24O	1000384-80-3	83
2		Phenol, 2-(1,1,3,3-tetramethylbu...	206	C14H22O	003884-95-5	78
3		Phenol, 4-(1,1-dimethylpropyl)-	164	C11H16O	000080-46-6	78
4		Phenol, 2-(1,1,3,3-tetramethylbu...	206	C14H22O	003884-95-5	72
5		2-tert-Butylphenol, 0-(n-propylo...	236	C14H20O3	1000487-37-9	72



Data Path : Z:\svoasrv\HPCHEM1\BNA_N\Data\BN111423\
 Data File : BN028615.D
 Acq On : 14 Nov 2023 23:09
 Operator : MA/JU
 Sample : 05337-16
 Misc :
 ALS Vial : 22 Sample Multiplier: 1

Instrument :
 BNA_N
 ClientSampleId :
 GCDK2

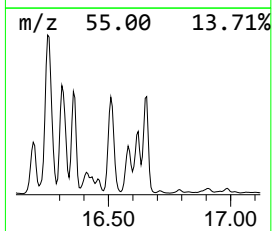
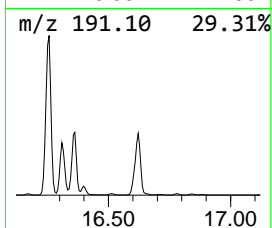
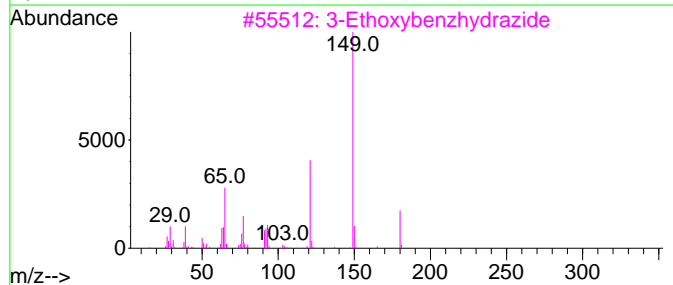
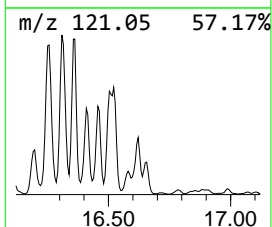
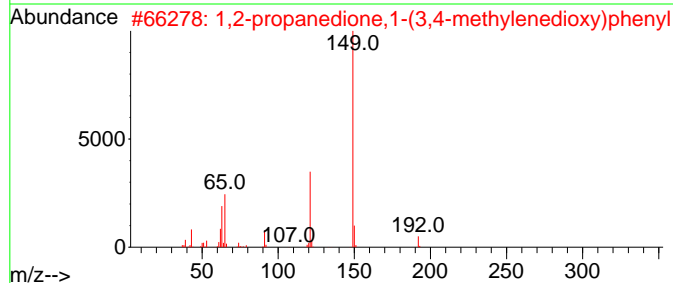
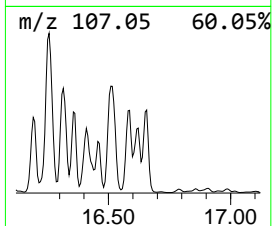
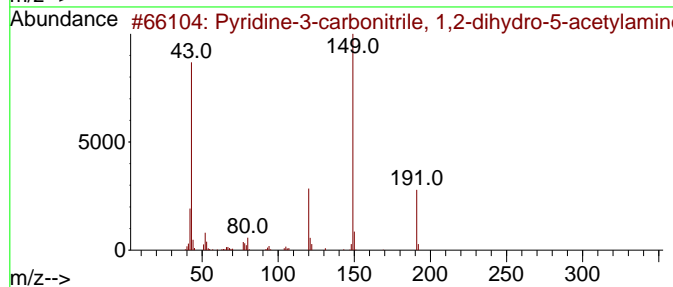
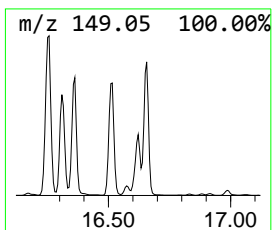
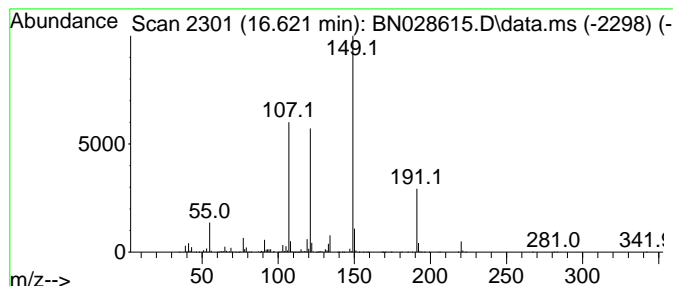
Quant Method : Z:\svoasrv\HPCHEM1\BNA_N\Methods\SFAM-EPA-BN111423.MA.M
 Quant Title : SVOA CALIBRATION

TIC Library : C:\Database\NIST20.L
 TIC Integration Parameters: LSCINT.P

 Peak Number 32 Pyridine-3-carbonitrile, 1,... Concentration Rank 10

R.T.	EstConc	Area	Relative to ISTD	R.T.
16.621	75.01 ng/ul	9606760	Phenanthrene-d10	17.092

Hit#	of	5	Tentative ID	MW	MolForm	CAS#	Qual
1			Pyridine-3-carbonitrile, 1,2-dih...	191	C9H9N3O2	220098-92-0	50
2			1,2-propanedione,1-(3,4-methylen...	192	C10H8O4	1000378-93-0	43
3			3-Ethoxybenzhydrazide	180	C9H12N2O2	027830-16-6	43
4			Phthalic acid, 2,4-dimethylpent-...	306	C18H26O4	1010356-84-2	43
5			2H-Indol-2-one, 1,3-dihydro-5-hy...	149	C8H7NO2	003416-18-0	37



Data Path : Z:\svoasrv\HPCHEM1\BNA_N\Data\BN111423\
 Data File : BN028615.D
 Acq On : 14 Nov 2023 23:09
 Operator : MA/JU
 Sample : 05337-16
 Misc :
 ALS Vial : 22 Sample Multiplier: 1

Instrument :
 BNA_N
 ClientSampleId :
 GCDK2

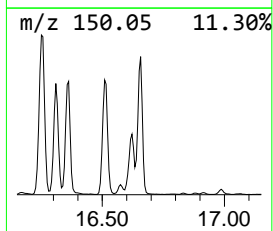
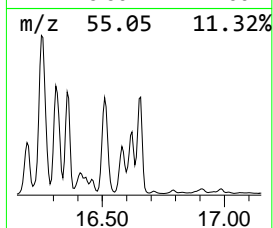
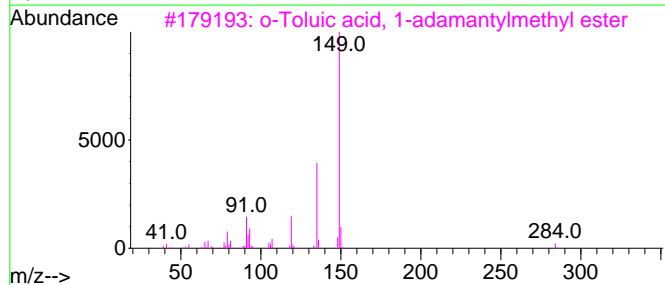
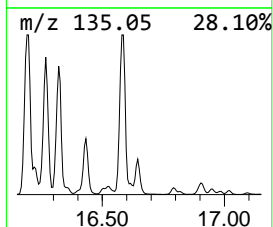
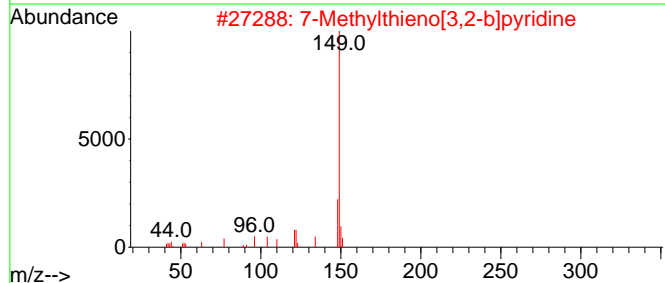
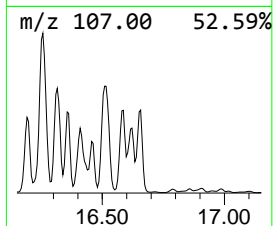
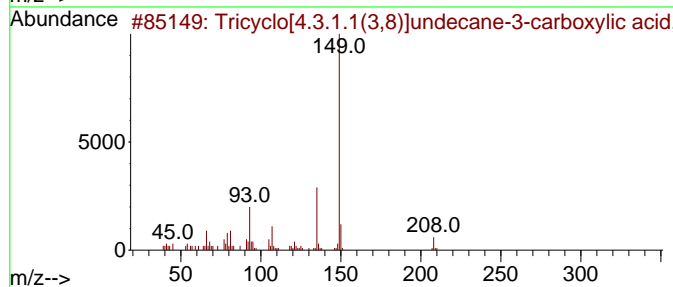
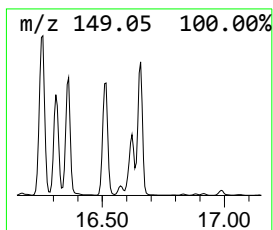
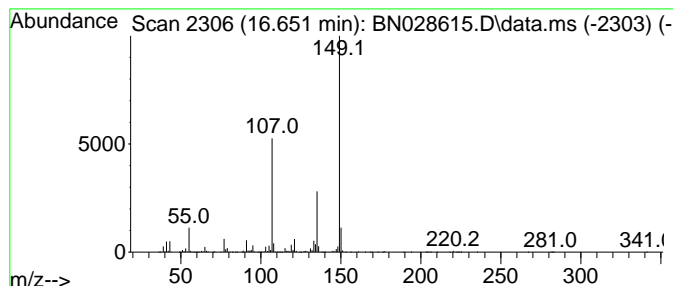
Quant Method : Z:\svoasrv\HPCHEM1\BNA_N\Methods\SFAM-EPA-BN111423.MA.M
 Quant Title : SVOA CALIBRATION

TIC Library : C:\Database\NIST20.L
 TIC Integration Parameters: LSCINT.P

 Peak Number 33 Tricyclo[4.3.1.1(3,8)]undec... Concentration Rank 7

R.T.	EstConc	Area	Relative to ISTD	R.T.
16.651	112.25 ng/ul	14376200	Phenanthrene-d10	17.092

Hit#	of	5	Tentative ID	MW	MolForm	CAS#	Qual
1			Tricyclo[4.3.1.1(3,8)]undecane-3...	208	C13H20O2	031061-61-7	53
2			7-Methylthieno[3,2-b]pyridine	149	C8H7NS	013362-83-9	43
3			o-Toluic acid, 1-adamantylmethyl...	284	C19H24O2	1000292-22-6	40
4			Phenol, 4-(1,1-dimethylethyl)-2-...	164	C11H16O	000098-27-1	37
5			2-tert-Butyl-6-methylphenol, n-b...	220	C15H24O	1000395-19-1	37



Data Path : Z:\svoasrv\HPCHEM1\BNA_N\Data\BN111423\
 Data File : BN028615.D
 Acq On : 14 Nov 2023 23:09
 Operator : MA/JU
 Sample : 05337-16
 Misc :
 ALS Vial : 22 Sample Multiplier: 1

Instrument :
 BNA_N
 ClientSampleId :
 GCDK2

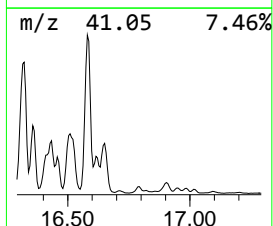
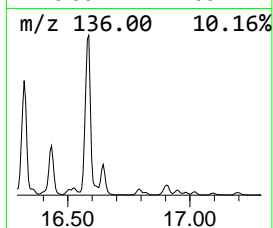
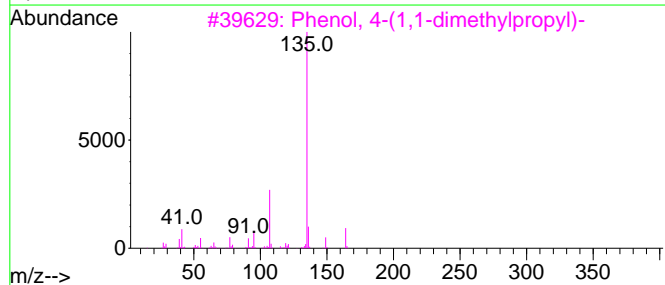
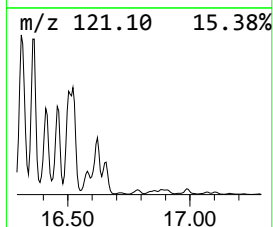
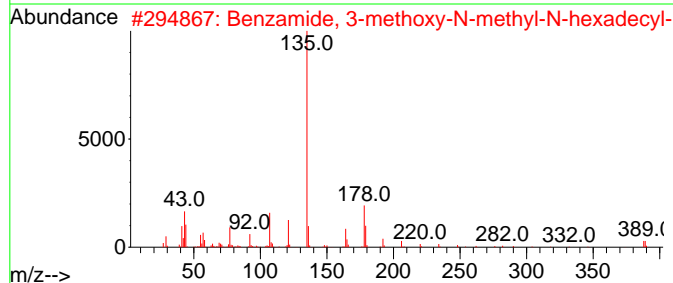
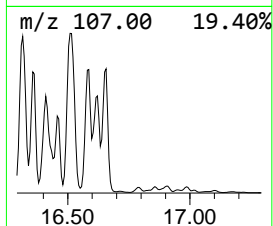
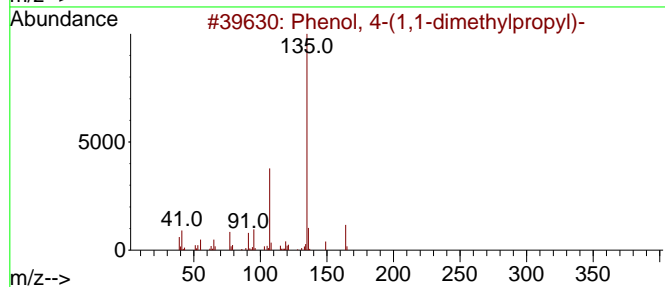
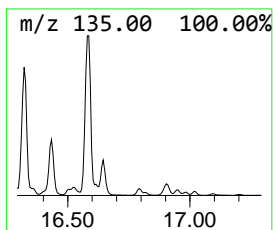
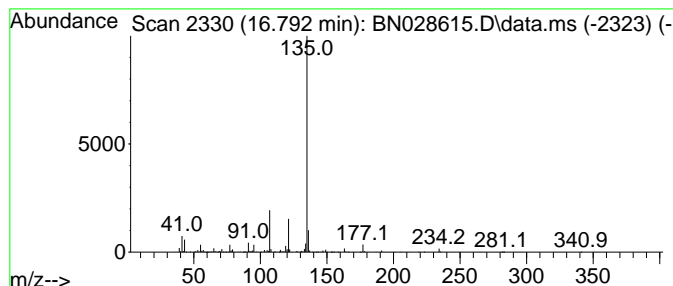
Quant Method : Z:\svoasrv\HPCHEM1\BNA_N\Methods\SFAM-EPA-BN111423.MA.M
 Quant Title : SVOA CALIBRATION

TIC Library : C:\Database\NIST20.L
 TIC Integration Parameters: LSCINT.P

 Peak Number 35 Benzamide, 3-methoxy-N-meth... Concentration Rank 18

R.T.	EstConc	Area	Relative to ISTD	R.T.
16.792	9.74 ng/ul	1247060	Phenanthrene-d10	17.092

Hit#	of	5	Tentative ID	MW	MolForm	CAS#	Qual
1			Phenol, 4-(1,1-dimethylpropyl)-	164	C11H16O	000080-46-6	74
2			Benzamide, 3-methoxy-N-methyl-N-...	389	C25H43NO2	1000420-55-3	72
3			Phenol, 4-(1,1-dimethylpropyl)-	164	C11H16O	000080-46-6	64
4			Phenol, 4-(1,1-dimethylpropyl)-	164	C11H16O	000080-46-6	64
5			Pentanoic acid, 5-hydroxy-, p-t-...	250	C15H22O3	166273-37-6	59



Data Path : Z:\svoasrv\HPCHEM1\BNA_N\Data\BN111423\
 Data File : BN028615.D
 Acq On : 14 Nov 2023 23:09
 Operator : MA/JU
 Sample : 05337-16
 Misc :
 ALS Vial : 22 Sample Multiplier: 1

Instrument :
 BNA_N
 ClientSampleId :
 GCDK2

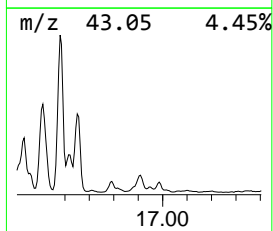
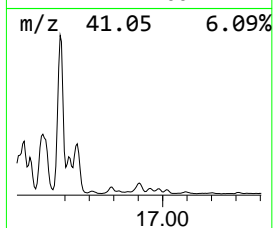
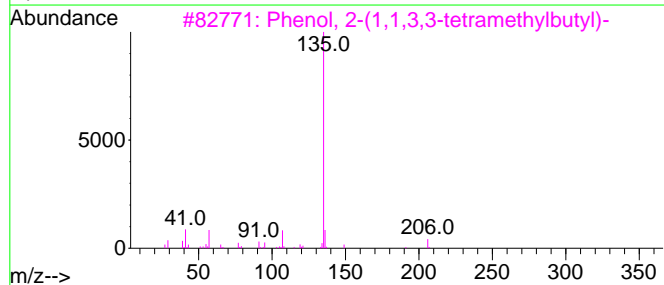
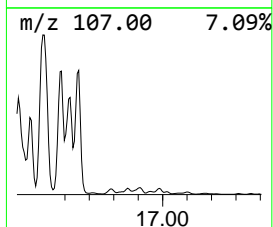
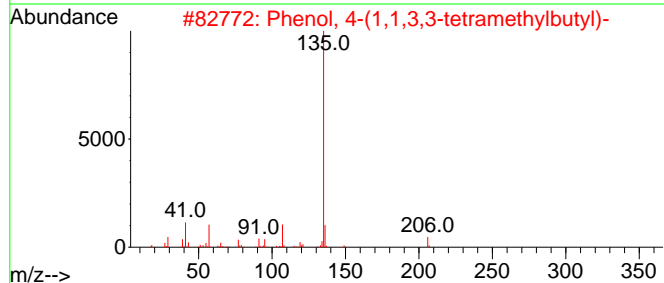
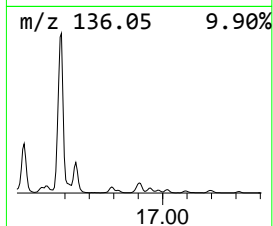
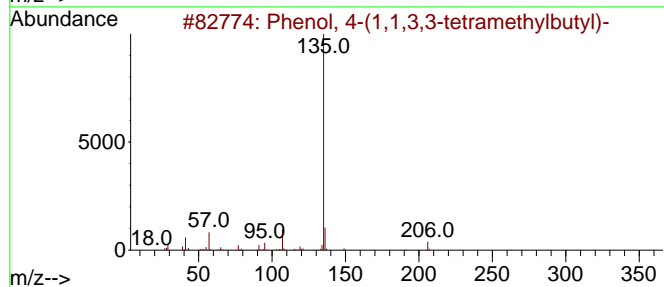
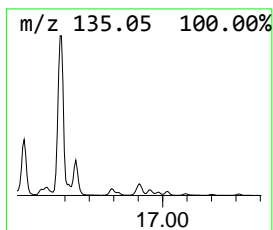
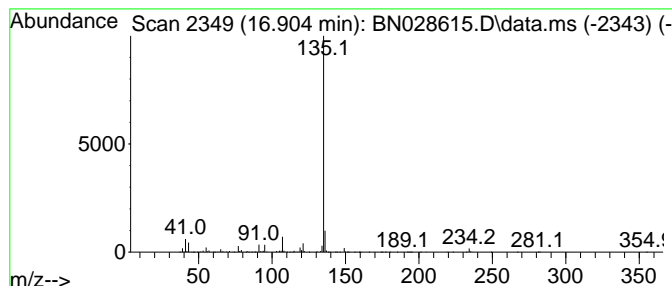
Quant Method : Z:\svoasrv\HPCHEM1\BNA_N\Methods\SFAM-EPA-BN111423.MA.M
 Quant Title : SVOA CALIBRATION

TIC Library : C:\Database\NIST20.L
 TIC Integration Parameters: LSCINT.P

 Peak Number 36 Phenol, 2-(1,1,3,3-tetramet... Concentration Rank 15

R.T.	EstConc	Area	Relative to ISTD	R.T.
16.904	14.12 ng/ul	1808870	Phenanthrene-d10	17.092

Hit#	of	5	Tentative ID	MW	MolForm	CAS#	Qual
1			Phenol, 4-(1,1,3,3-tetramethylbu...	206	C14H22O	000140-66-9	78
2			Phenol, 4-(1,1,3,3-tetramethylbu...	206	C14H22O	000140-66-9	78
3			Phenol, 2-(1,1,3,3-tetramethylbu...	206	C14H22O	003884-95-5	78
4			4-Methoxybenzoic acid, 2,6-dimet...	422	C19H16F6O4	1000304-50-0	72
5			(Z)-2,6-Dimethylocta-2,5,7-trien...	150	C10H14O	033746-71-3	72



Data Path : Z:\svoasrv\HPCHEM1\BNA_N\Data\BN111423\
 Data File : BN028615.D
 Acq On : 14 Nov 2023 23:09
 Operator : MA/JU
 Sample : 05337-16
 Misc :
 ALS Vial : 22 Sample Multiplier: 1

Instrument :
 BNA_N
 ClientSampleId :
 GCDK2

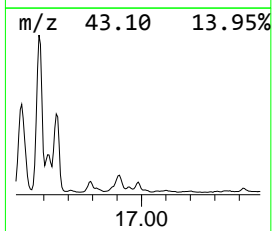
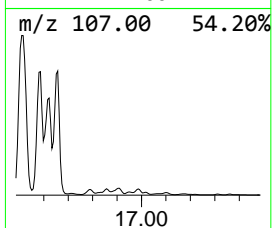
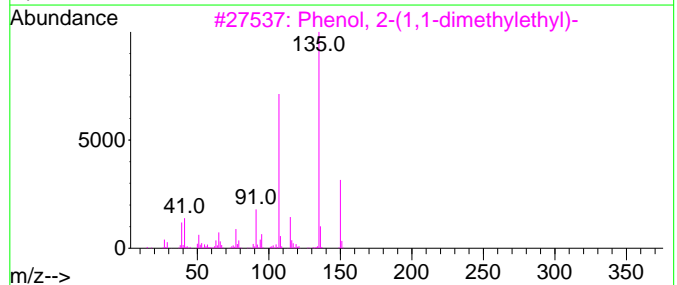
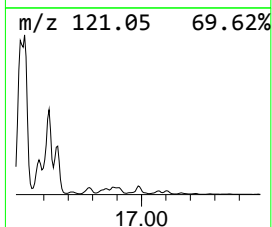
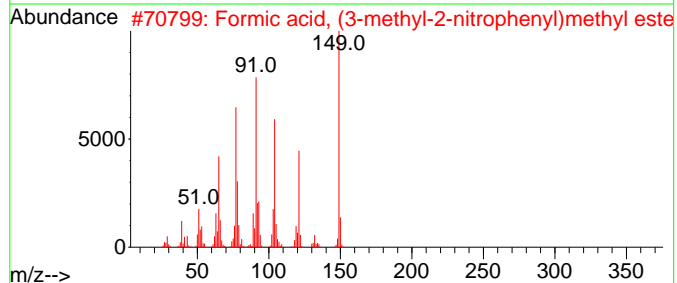
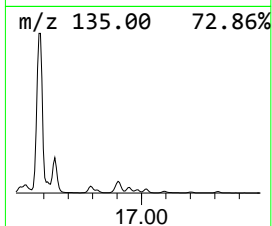
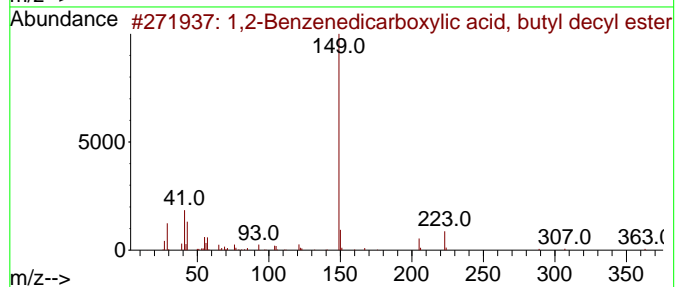
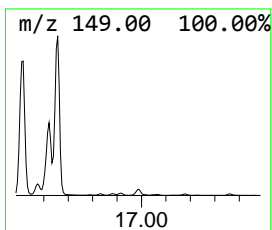
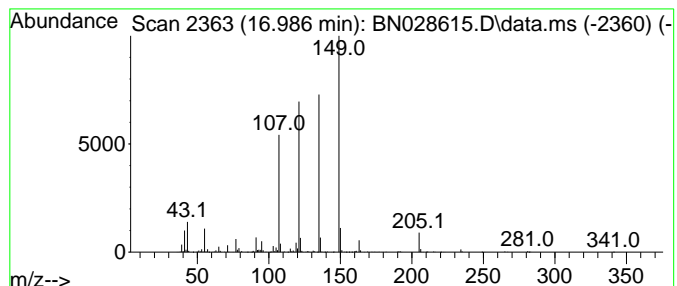
Quant Method : Z:\svoasrv\HPCHEM1\BNA_N\Methods\SFAM-EPA-BN111423.MA.M
 Quant Title : SVOA CALIBRATION

TIC Library : C:\Database\NIST20.L
 TIC Integration Parameters: LSCINT.P

 Peak Number 38 unknown-07 Concentration Rank 28

R.T.	EstConc	Area	Relative to ISTD	R.T.
16.986	5.41 ng/ul	692401	Phenanthrene-d10	17.092

Hit#	of	5	Tentative ID	MW	MolForm	CAS#	Qual
1			1,2-Benzenedicarboxylic acid, bu...	362	C22H34O4	000089-19-0	38
2			Formic acid, (3-methyl-2-nitroph...	195	C9H9NO4	1000368-20-9	38
3			Phenol, 2-(1,1-dimethylethyl)-	150	C10H14O	000088-18-6	38
4			Phenol, 2-(1,1-dimethylethyl)-	150	C10H14O	000088-18-6	38
5			Phthalic acid, butyl hept-4-yl e...	320	C19H28O4	1010356-78-4	35



Data Path : Z:\svoasrv\HPCHEM1\BNA_N\Data\BN111423\
 Data File : BN028615.D
 Acq On : 14 Nov 2023 23:09
 Operator : MA/JU
 Sample : 05337-16
 Misc :
 ALS Vial : 22 Sample Multiplier: 1

Instrument :
 BNA_N
 ClientSampleId :
 GCDK2

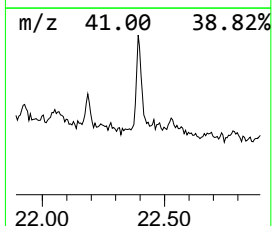
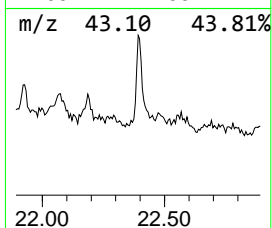
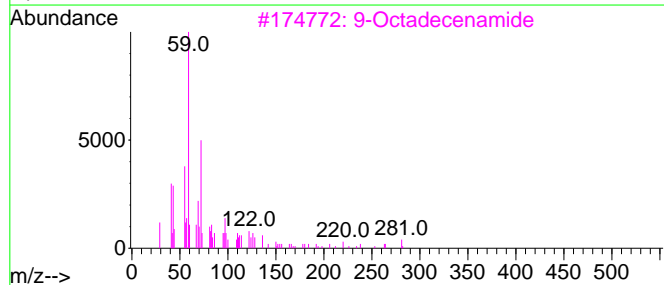
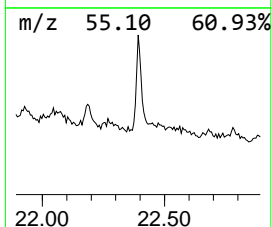
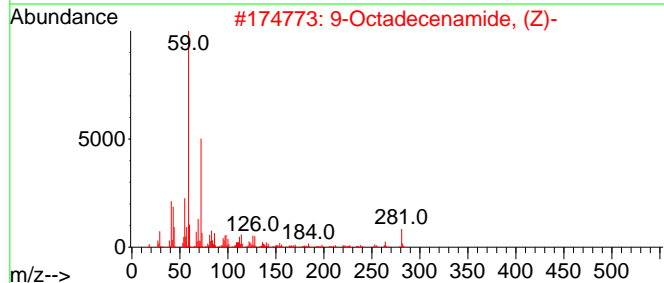
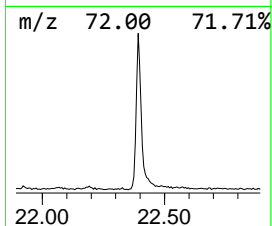
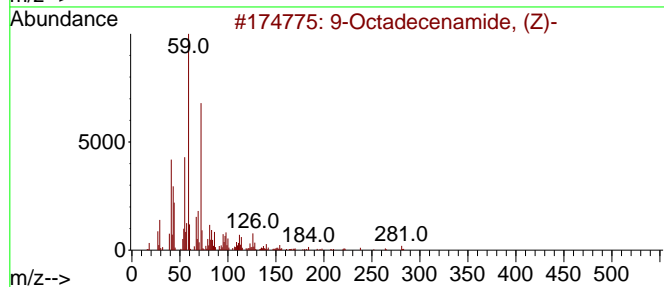
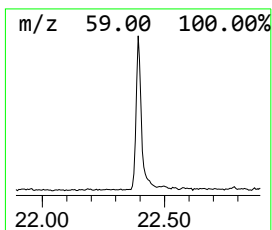
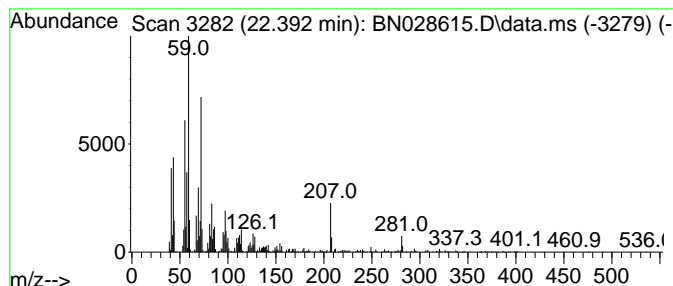
Quant Method : Z:\svoasrv\HPCHEM1\BNA_N\Methods\SFAM-EPA-BN111423.MA.M
 Quant Title : SVOA CALIBRATION

TIC Library : C:\Database\NIST20.L
 TIC Integration Parameters: LSCINT.P

 Peak Number 41 9-Octadecenamide, (Z)- Concentration Rank 20

R.T.	EstConc	Area	Relative to ISTD	R.T.
22.392	8.13 ng/ul	692481	Chrysene-d12	21.304

Hit#	of	5	Tentative ID	MW	MolForm	CAS#	Qual
1			9-Octadecenamide, (Z)-	281	C18H35NO	000301-02-0	90
2			9-Octadecenamide, (Z)-	281	C18H35NO	000301-02-0	89
3			9-Octadecenamide	281	C18H35NO	003322-62-1	89
4			9-Octadecenamide, (Z)-	281	C18H35NO	000301-02-0	81
5			9-Octadecenamide, (Z)-	281	C18H35NO	000301-02-0	68



Data Path : Z:\svoasrv\HPCHEM1\BNA_N\Data\BN111423\
 Data File : BN028615.D
 Acq On : 14 Nov 2023 23:09
 Operator : MA/JU
 Sample : 05337-16
 Misc :
 ALS Vial : 22 Sample Multiplier: 1

Instrument :
 BNA_N
 ClientSampleId :
 GCDK2

Quant Method : Z:\svoasrv\HPCHEM1\BNA_N\Methods\SFAM-EPA-BN111423.MA.M
 Quant Title : SVOA CALIBRATION

TIC Library : C:\Database\NIST0.L
 TIC Integration Parameters: LSCINT.P

TIC Top Hit name	RT	EstConc	Units	Response	--Internal Standard--			
					#	RT	Resp	Conc
1-Pentanol, 2-e...	7.769	7.8	ng/ul	240850	1	7.704	613303	20.0
unknown-01	10.939	8.8	ng/ul	593204	2	10.486	1343700	20.0
Hexanoic acid, ...	11.098	4.8	ng/ul	325093	2	10.486	1343700	20.0
Heptanoic acid,...	11.369	17.4	ng/ul	1169620	2	10.486	1343700	20.0
unknown-02	11.433	5.3	ng/ul	353552	2	10.486	1343700	20.0
unknown-03	11.480	7.9	ng/ul	533183	2	10.486	1343700	20.0
Phenol, 4-(1,1-...	13.192	10.4	ng/ul	1030880	3	14.339	1977320	20.0
2,4,7,9-Tetrame...	13.275	6.7	ng/ul	665006	3	14.339	1977320	20.0
Iridomyrmecin	14.204	12.3	ng/ul	1219140	3	14.339	1977320	20.0
Benzoic acid, 4...	14.498	7.3	ng/ul	720593	3	14.339	1977320	20.0
2-Methylbicyclo...	14.557	5.6	ng/ul	555309	3	14.339	1977320	20.0
Pivalic acid, 4...	15.657	7.5	ng/ul	745283	3	14.339	1977320	20.0
Phenol, p-tert-...	15.798	39.5	ng/ul	5060070	4	17.092	2561370	20.0
Phenol, 2-(1,1-...	15.827	17.9	ng/ul	2298350	4	17.092	2561370	20.0
Anisole, p-octyl-	15.874	5.9	ng/ul	754420	4	17.092	2561370	20.0
1-(Isocyanatome...	16.098	80.2	ng/ul	10267300	4	17.092	2561370	20.0
Phenol, 4-(1,1,...	16.192	224.1	ng/ul	28697900	4	17.092	2561370	20.0
5H-Pyrrolo(3,2-...	16.257	359.0	ng/ul	45978200	4	17.092	2561370	20.0
4-(7-Methylocty...	16.316	247.9	ng/ul	31745300	4	17.092	2561370	20.0
Hexestrol dimet...	16.357	120.1	ng/ul	15374200	4	17.092	2561370	20.0
unknown-04	16.410	75.6	ng/ul	9677460	4	17.092	2561370	20.0
unknown-05	16.457	52.0	ng/ul	6664550	4	17.092	2561370	20.0
unknown-06	16.510	186.3	ng/ul	23858000	4	17.092	2561370	20.0
4-(1,1-Dimethyl...	16.580	220.9	ng/ul	28291000	4	17.092	2561370	20.0
Pyridine-3-carb...	16.621	75.0	ng/ul	9606760	4	17.092	2561370	20.0
Tricyclo[4.3.1...	16.651	112.3	ng/ul	14376200	4	17.092	2561370	20.0
Benzamide, 3-me...	16.792	9.7	ng/ul	1247060	4	17.092	2561370	20.0
Phenol, 2-(1,1,...	16.904	14.1	ng/ul	1808870	4	17.092	2561370	20.0
unknown-07	16.986	5.4	ng/ul	692401	4	17.092	2561370	20.0
9-Octadecenamid...	22.392	8.1	ng/ul	692481	5	21.304	1703810	20.0